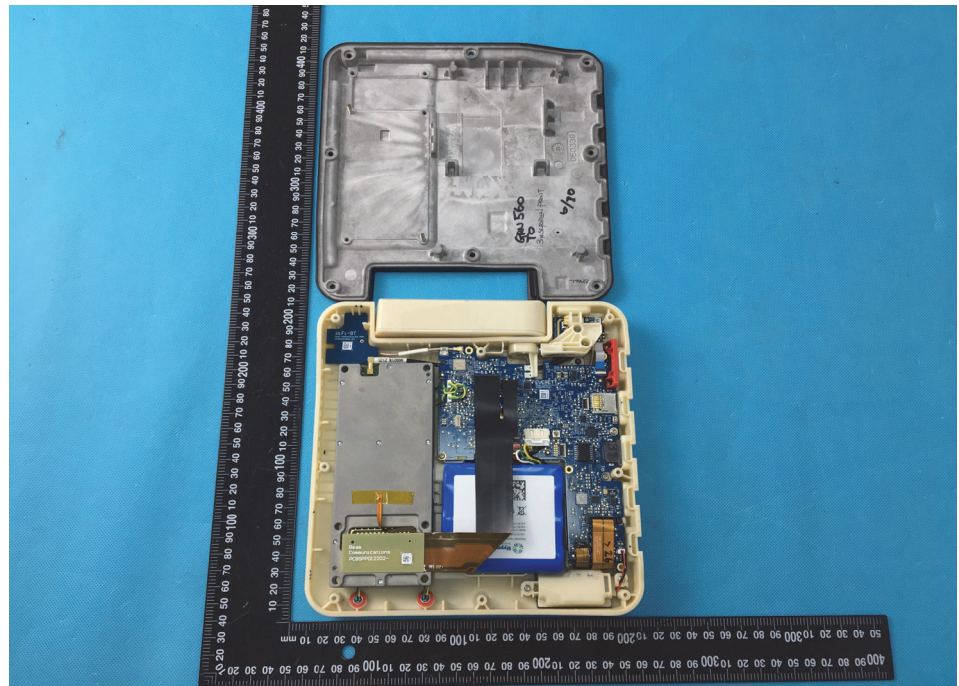
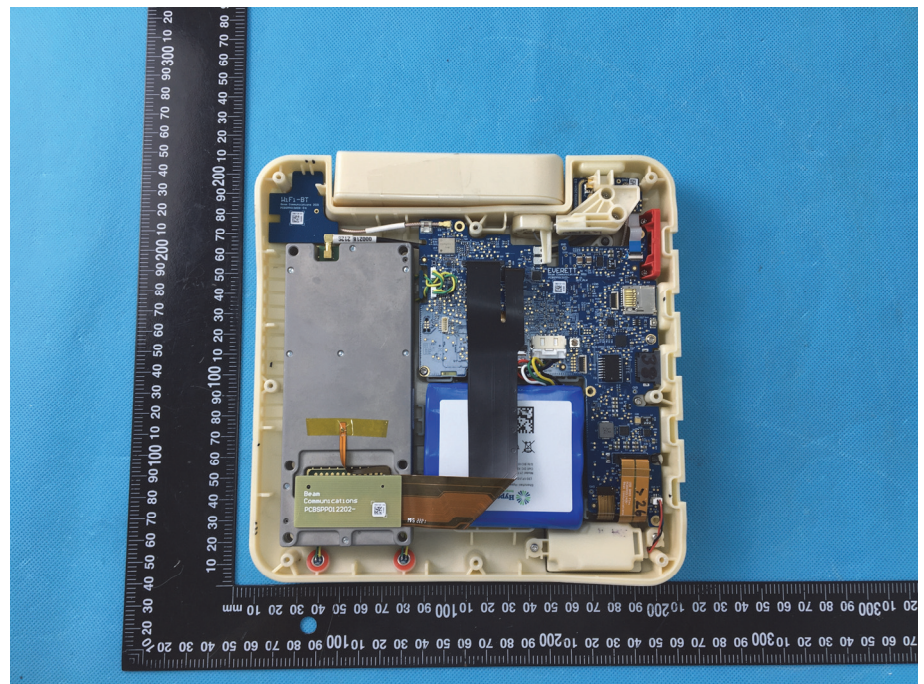



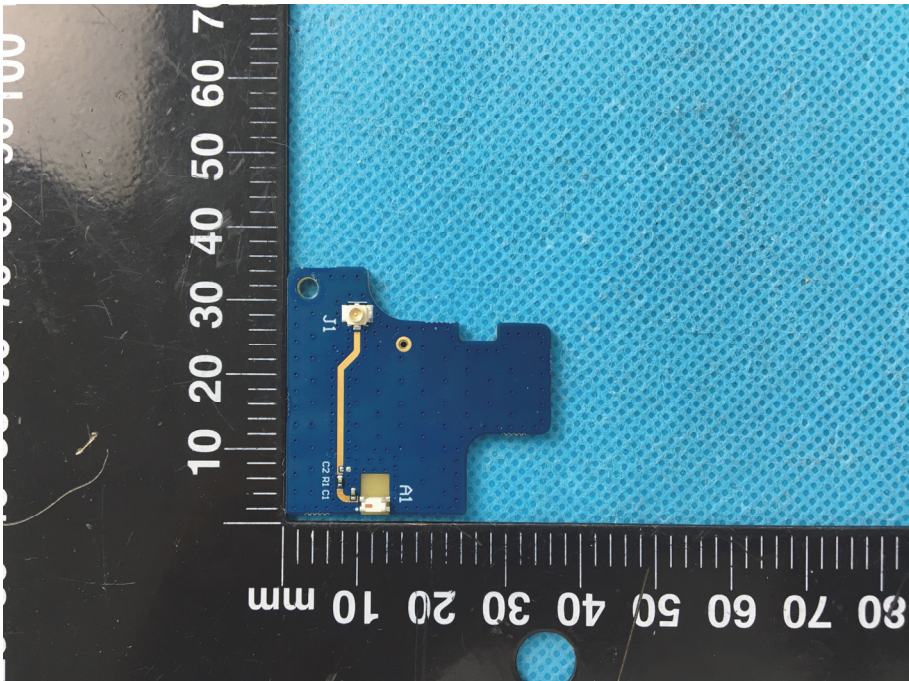
EXHIBIT 3 - EUT INTERNAL PHOTOGRAPHS

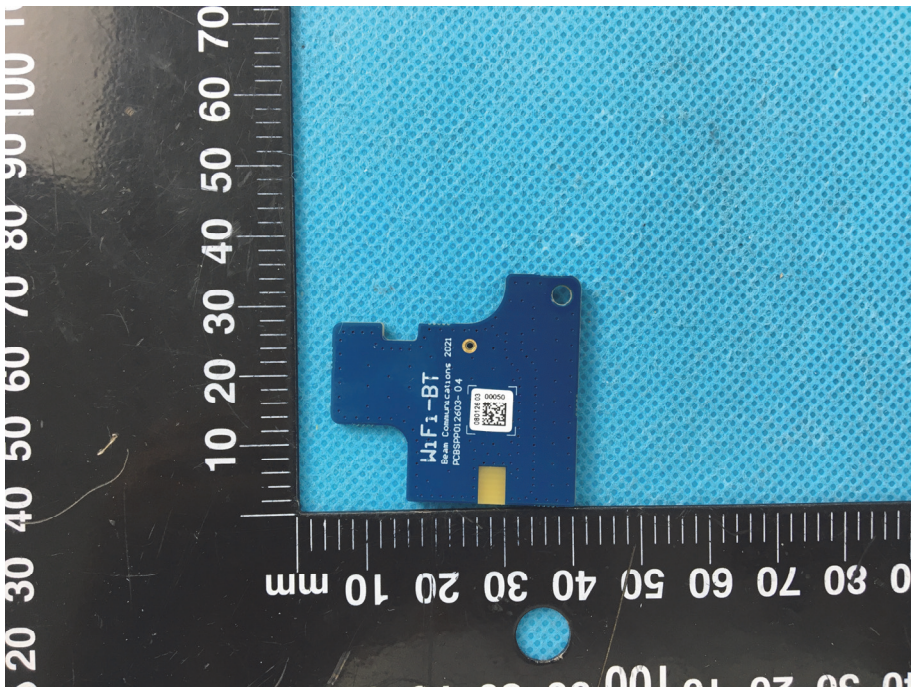
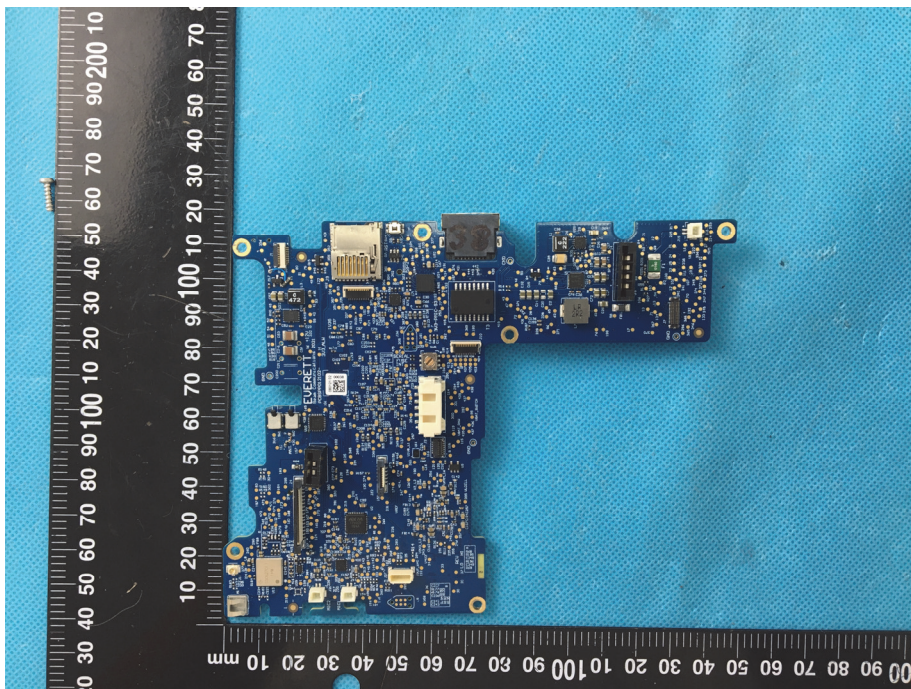
**EUT Housing and Board
View 1**



**EUT Housing and Board
View 2**



<p style="text-align: center;">Solder Board-Component View 1</p>	
<p style="text-align: center;">Solder Board-Component View 2</p>	

<p style="text-align: center;">Solder Board-Component View 3</p>	 <p>A close-up photograph of a blue PCB component, likely a Wi-Fi/BT module. The component is rectangular with a notch on one side. It features a white label with the text "Wi-Fi-BT", "Broadband Communications 2021", and "PCBSP012603-04". A QR code is also visible on the label. The component is placed on a blue textured surface next to a black ruler with white markings. The ruler shows measurements in millimeters, with the component's length being approximately 40 mm.</p>
<p style="text-align: center;">Solder Board-Component View 4</p>	 <p>A photograph of a larger blue PCB assembly, possibly a main board or a complex module. The board is populated with various electronic components, including integrated circuits, capacitors, and connectors. It is placed on a blue textured surface next to a black ruler with white markings. The ruler shows measurements in millimeters, with the board's length being approximately 100 mm.</p>