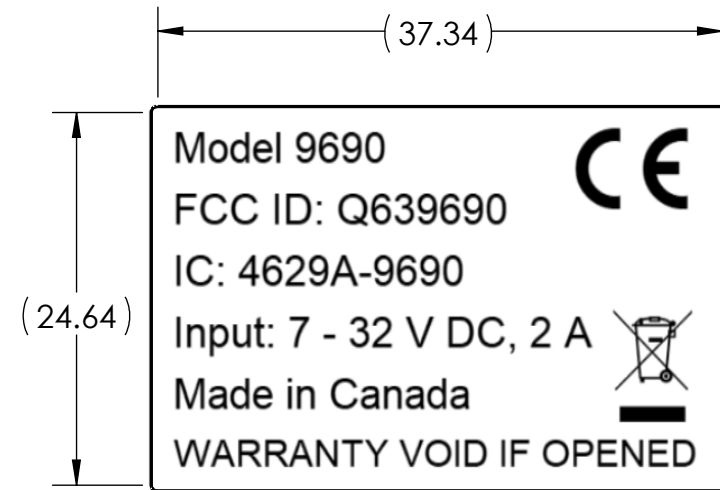




NOTES:

1. MATERIAL: POLYESTER, 1.5"X1.0", GLOSS, THERMAL TRANSFER, Z-ULTIMATE 2000T
2. COLOR:
 - PRINT TEST COLOR: BLACK
 - FILM COLOR: WHITE
3. THIS LABEL MUST CONTAIN THE FOLLOWING:
 - MODEL NUMBER: 9690
 - FCC ID: Q639603N
 - IC NUMBER: 4629A-9690
 - INPUT VOLTAGE AND CURRENT RATING (7-32 VDC, 2.0 A)
 - COUNTRY OF ORIGIN.
 - WARRANT VOID IF OPENED
 - CE MARK (EUROPEAN ECONOMIC AREA)
 - WHEELIE BIN/SOLID BAR SYMBOL (WEEE DIRECTIVE)
4. FONT IS ARIAL, SIZE 8PT. "WARRANTY VOID IF OPENED" IS SIZE 7PT.
5. CE MARK MUST BE A MINIMUM OF 5MM TALL.
6. WHEELIE BIN/SOLID BAR SYMBOL MUST BE A MINIMUM OF 7MM TALL.

REVISIONS			
REV.	DESCRIPTION	DATE	ENGR.
A	INITIAL RELEASE	09/10/2019	CFB
B	UPDATED FCC & IC NUMBERS & REMOVED REDUNDANT ROHS TEXT.	15/07/2020	CFB



 <p>PROPRIETARY AND CONFIDENTIAL THIS DRAWING AND THE INFORMATION CONTAINED HEREIN IS THE PROPERTY OF IRIDIUM SATELLITE LLC AND/OR ITS AFFILIATES AND LICENSORS, UNLESS OTHERWISE STATED. NEITHER THIS DRAWING NOR ANY SUCH INFORMATION MAY BE COPIED, REPRODUCED, TRANSMITTED, DISTRIBUTED OR OTHERWISE USED EXCEPT AS EXPRESSLY APPROVED IN WRITING BY IRIDIUM SATELLITE LLC AND/OR ITS AFFILIATES. NO RIGHTS OR LICENSES OF ANY KIND TO SUCH DRAWING OR INFORMATION (INCLUDING ANY INTELLECTUAL PROPERTY RIGHTS THEREIN) ARE TRANSFERRED TO, GRANTED TO, PROVIDED TO OR RECEIVED BY THE RECIPIENT HEREOF AS A RESULT OF THE DELIVERY HEREOF. THIS MATERIAL MAY NOT IN WHOLE OR IN PART BE COPIED, STORED ELECTRONICALLY OR COMMUNICATED TO THIRD PARTIES WITHOUT THE PRIOR WRITTEN AGREEMENT OF IRIDIUM.</p>	MATERIAL SEE NOTE 1		DESCRIPTION REGULATORY LABEL		
	THIRD ANGLE PROJECTION		DOCUMENT NUMBER MD-200122-00	3D REFERENCE MD-200122-00	3D REV B
	TOLERANCES: UNLESS OTHERWISE SPECIFIED		DRAWN BY CBRAKE	ISSUE DATE 7/15/2020	UNITS mm
	LINEAR DIMENSIONS ± 0.3 ANGULAR DIMENSIONS ± 2° HOLE TO HOLE ± 0.10	REVIEWED BY GEOMETRIC TOLERANCING PER ASME Y14.5m-1994	SCALE NONE	REVISION B	SIZE A4 SHEET 1 of 1