



### EXHIBIT 3 - EUT INTERNAL PHOTOGRAPHS

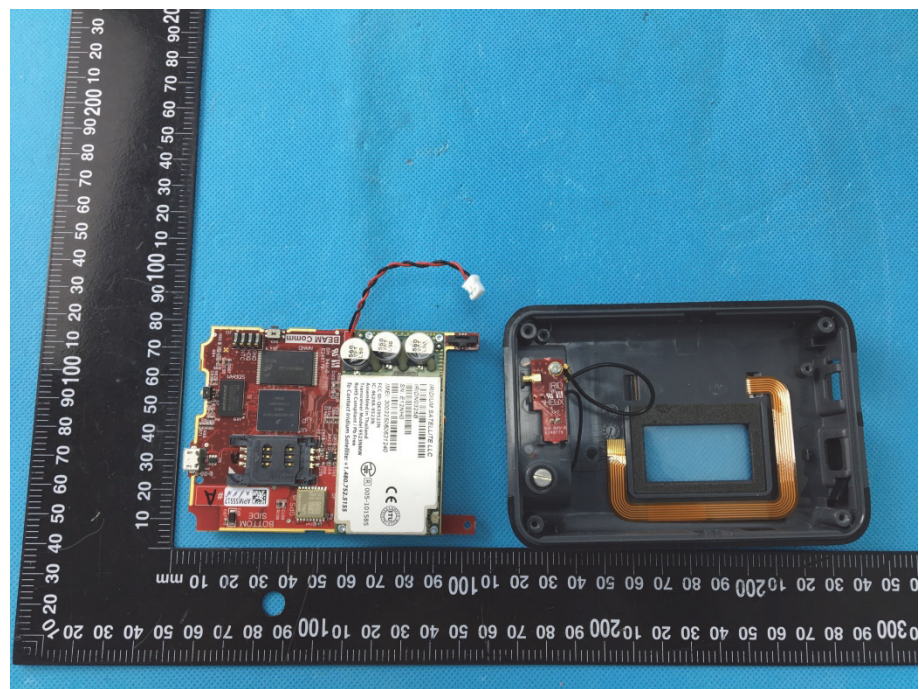
<p><b>EUT Housing and Board View 1</b></p>	
<p><b>EUT Housing and Board View 2</b></p>	




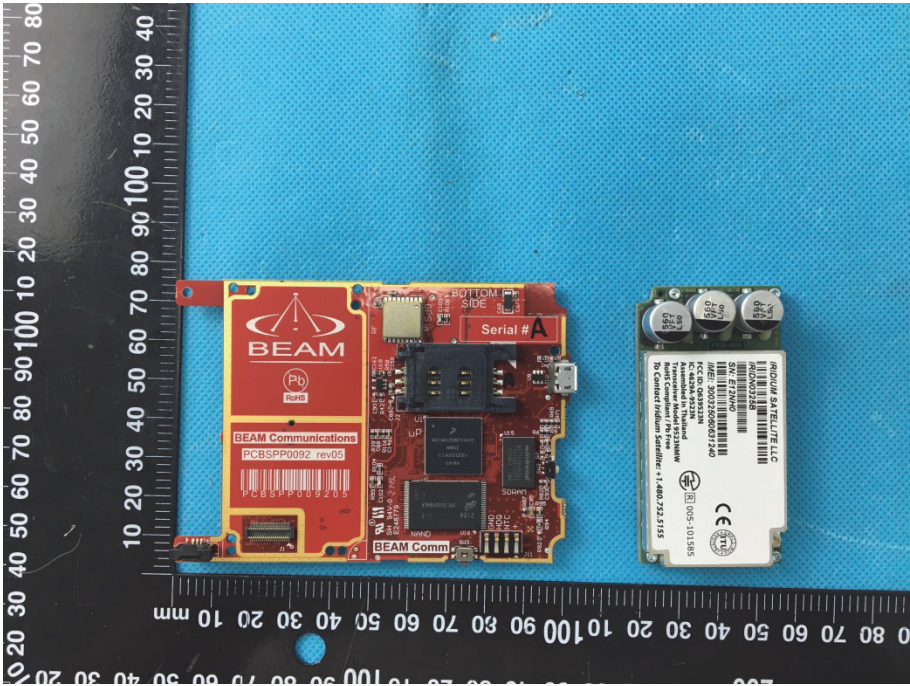
**EUT Housing and Board  
View 3**



**EUT Housing and Board  
View 4**





<p style="text-align: center;"><b>Solder Board-Component View 1</b></p>	 <p>A photograph showing a black Iridium BR0001 Rechargeable Li-Ion Battery. The battery is positioned vertically next to a black ruler with white markings. The ruler shows measurements in millimeters (0 to 100) and centimeters (0 to 10). The battery label includes the Iridium logo, 'Rechargeable Li-Ion Battery', 'WRT1389 P20581-4023035', '3.7V, 3600mAh, 13.3Wh', and various safety warnings and symbols (CE, RoHS, etc.).</p>
<p style="text-align: center;"><b>Solder Board-Component View 2</b></p>	 <p>A photograph showing a red BEAM satellite board and an Iridium battery. The board is positioned horizontally next to a black ruler with white markings. The ruler shows measurements in millimeters (0 to 100) and centimeters (0 to 10). The board features a yellow label with the BEAM logo and 'BEAM Communications PCBSP0092 rev03'. The board is populated with various components, including a microcontroller, memory chips, and connectors. The Iridium battery is placed to the right of the board for scale. The board also has 'Serial # A' and 'BEAM Comm' printed on it.</p>



