

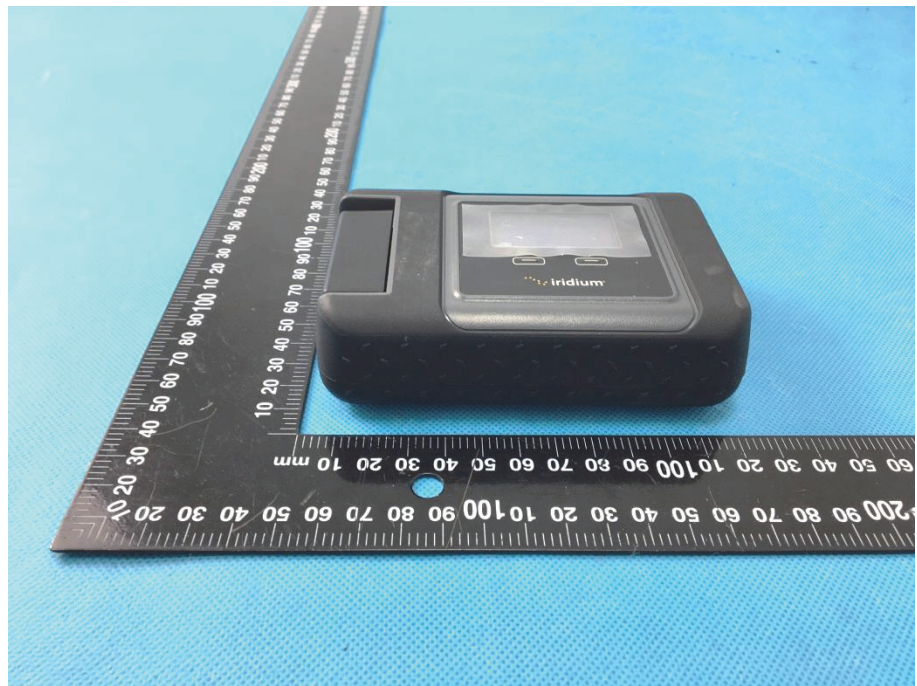


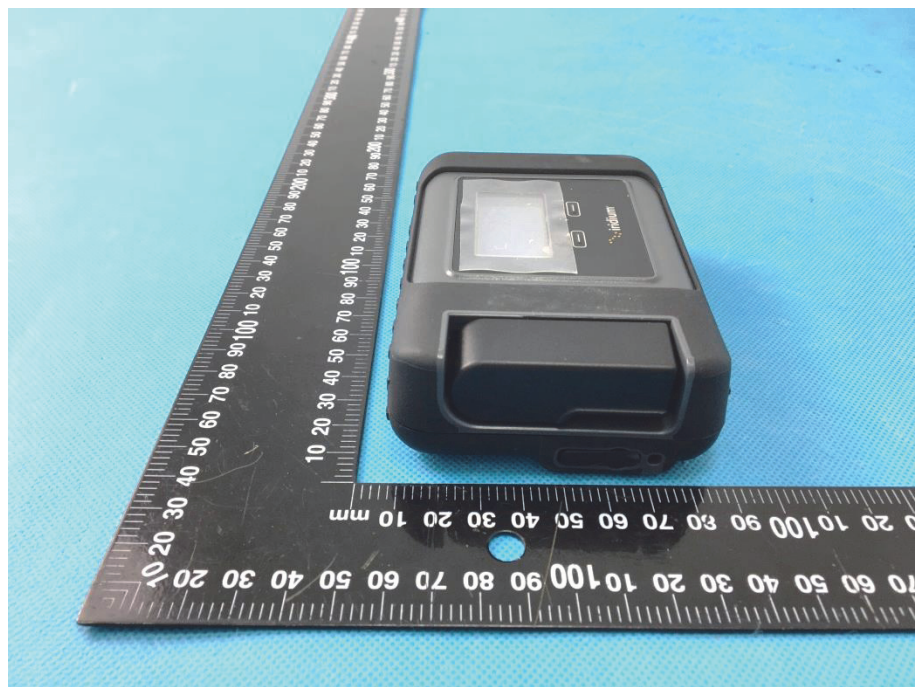
EXHIBIT 2 - EUT PHOTOGRAPHS

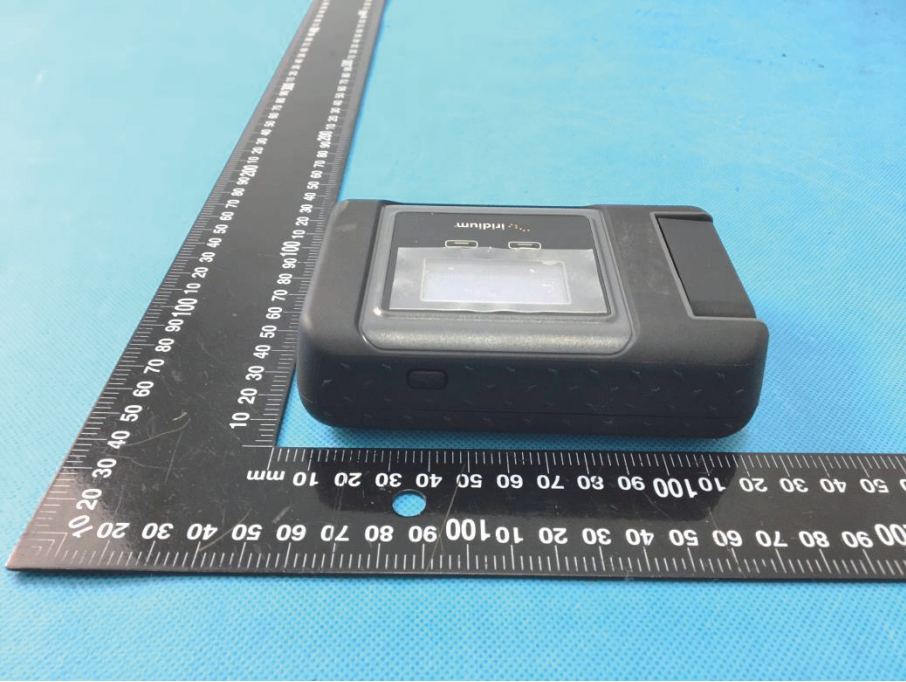
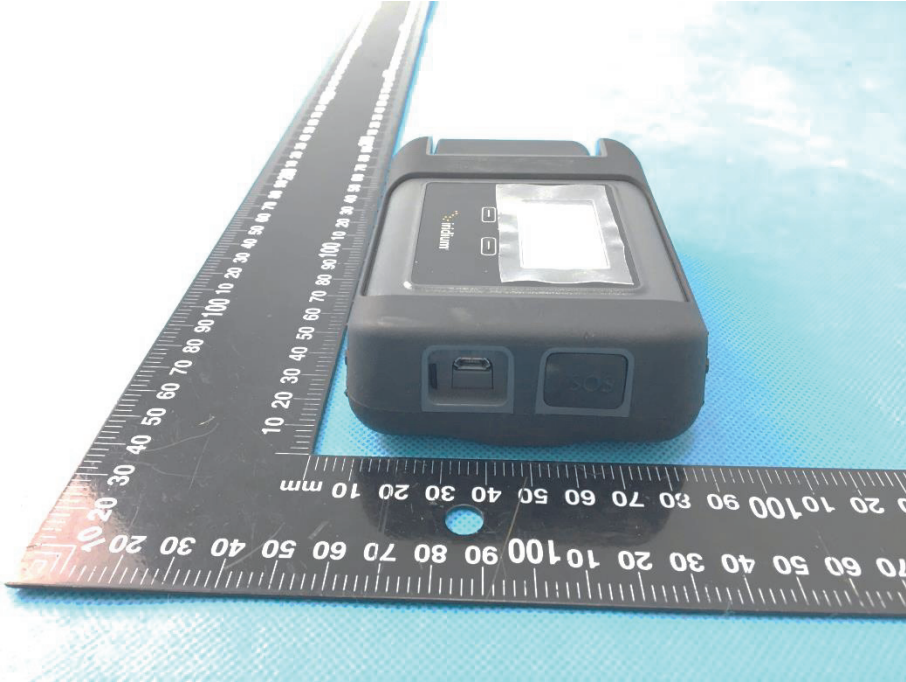
<p>EUT View 1</p>	 A photograph showing an Iridium satellite phone and its accessories. The phone is a black, rectangular device with a small screen and the Iridium logo. To its right are a black charging cable with a USB connector, a black power adapter, and a black power plug. A black ruler with white markings is placed below the items for scale. The background is a blue textured surface.
<p>EUT View 2</p>	 A close-up photograph of the Iridium satellite phone. The phone is black and rectangular, with a small screen and the Iridium logo. A black ruler with white markings is placed below the phone for scale. The background is a blue textured surface.

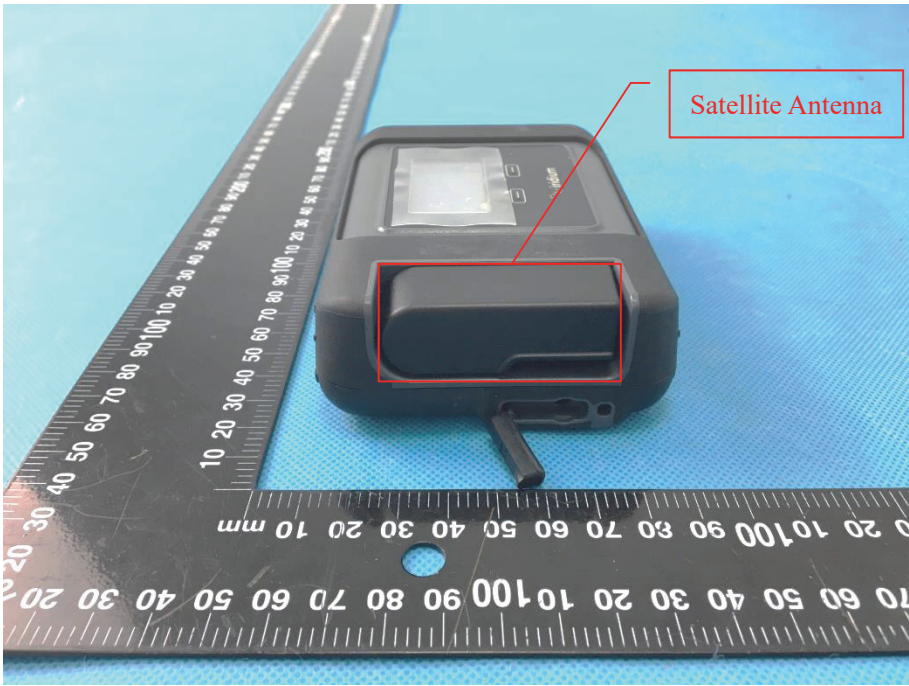
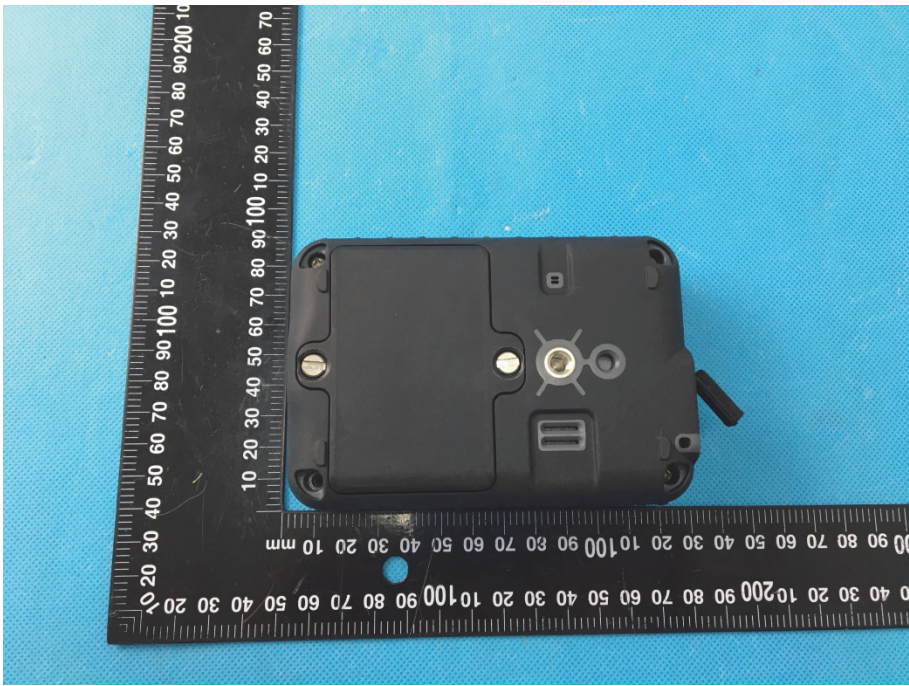
EUT View 3



EUT View 4



<p>EUT View 5</p>	 A black handheld electronic device is shown from a top-down perspective. It features a rectangular screen in the center, flanked by two small buttons. The device is placed on a blue textured surface next to a black ruler with white markings. The ruler is oriented vertically, with the 0 mark at the top and the 100 mm mark at the bottom. The device's length is approximately 100 mm.
<p>EUT View 6</p>	 A black handheld electronic device is shown from a side-on perspective. It features a rectangular screen in the center, flanked by two small buttons. The device is placed on a blue textured surface next to a black ruler with white markings. The ruler is oriented vertically, with the 0 mark at the top and the 100 mm mark at the bottom. The device's length is approximately 100 mm.

<p>EUT View 7</p>	 <p>A photograph of a black handheld electronic device (EUT) lying on a blue textured surface. A black ruler is placed horizontally below the device for scale. A red rectangular box highlights a component on the back of the device, and a red line points from this box to a label that reads "Satellite Antenna".</p>
<p>EUT View 8</p>	 <p>A photograph of the back of the black handheld electronic device (EUT) lying on a blue textured surface. A black ruler is placed vertically to the left of the device for scale. The back panel features a central circular port, a USB port, and several screws.</p>