



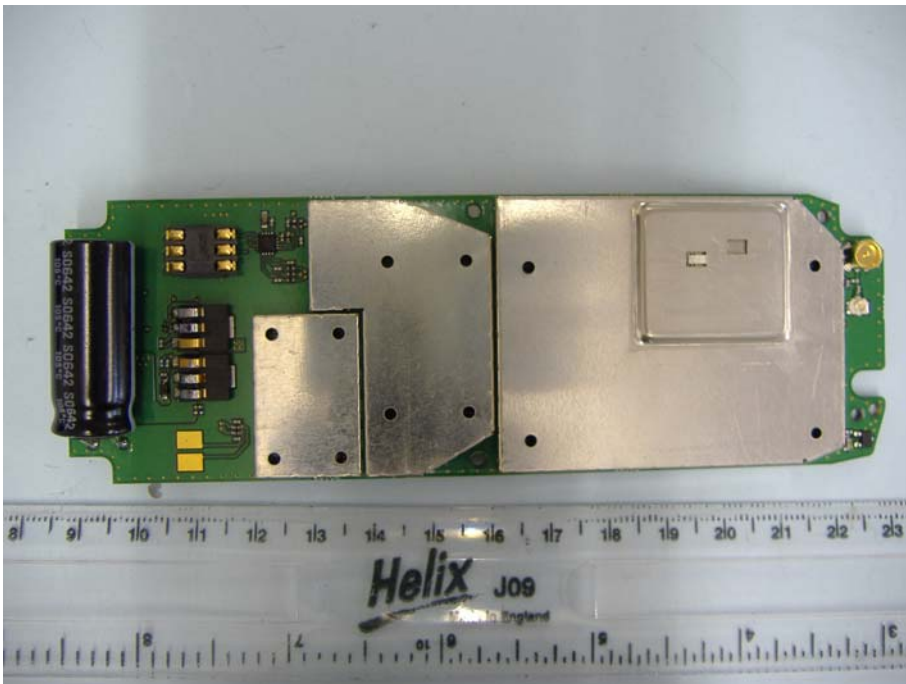
**Front Overview Case Front Removed**



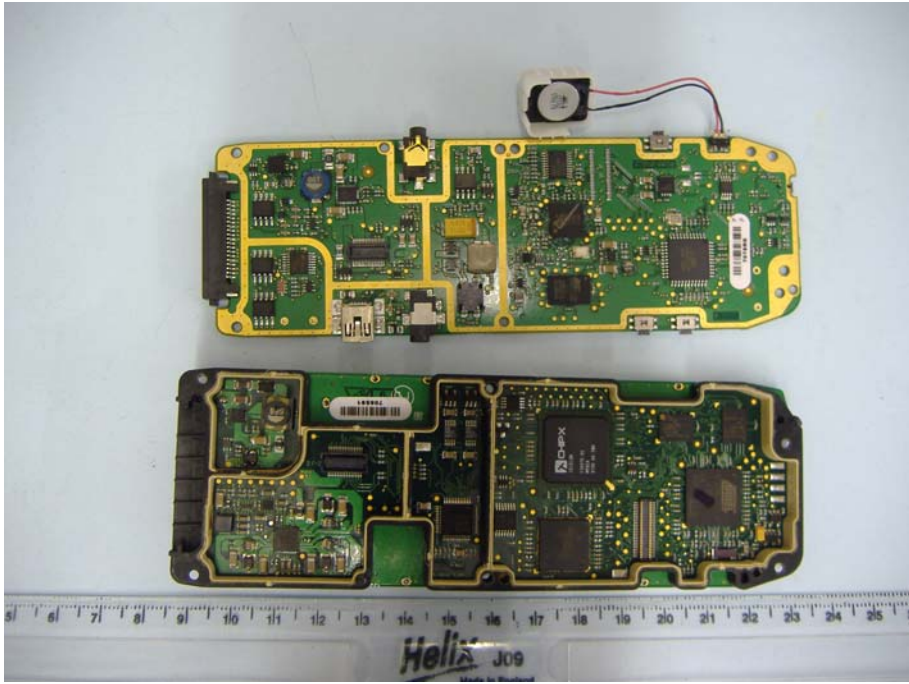
**Rear Overview PCB Removed From Case**



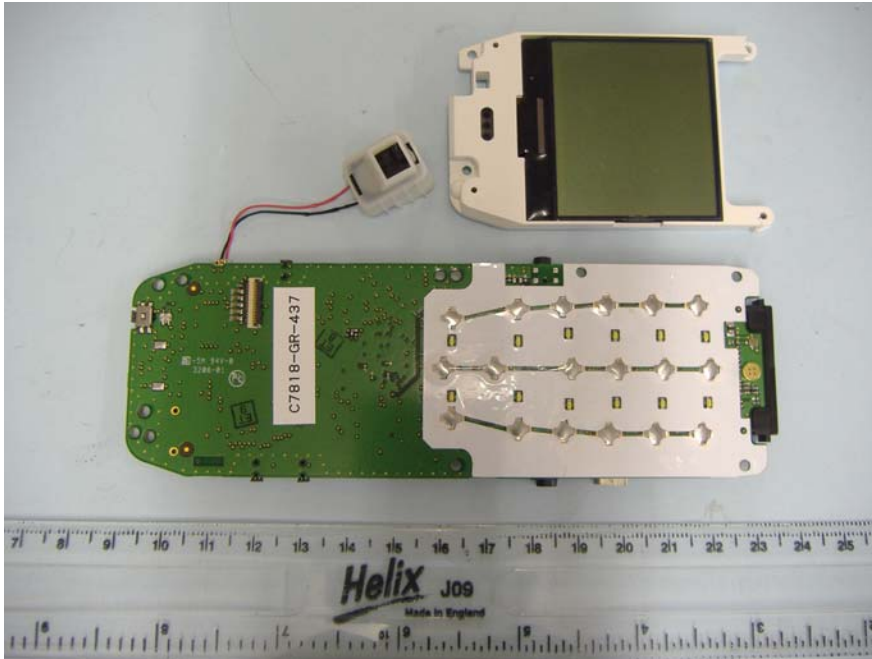
**Assembled PCBs Keypad Side**



**Assembled PCBs Rear**



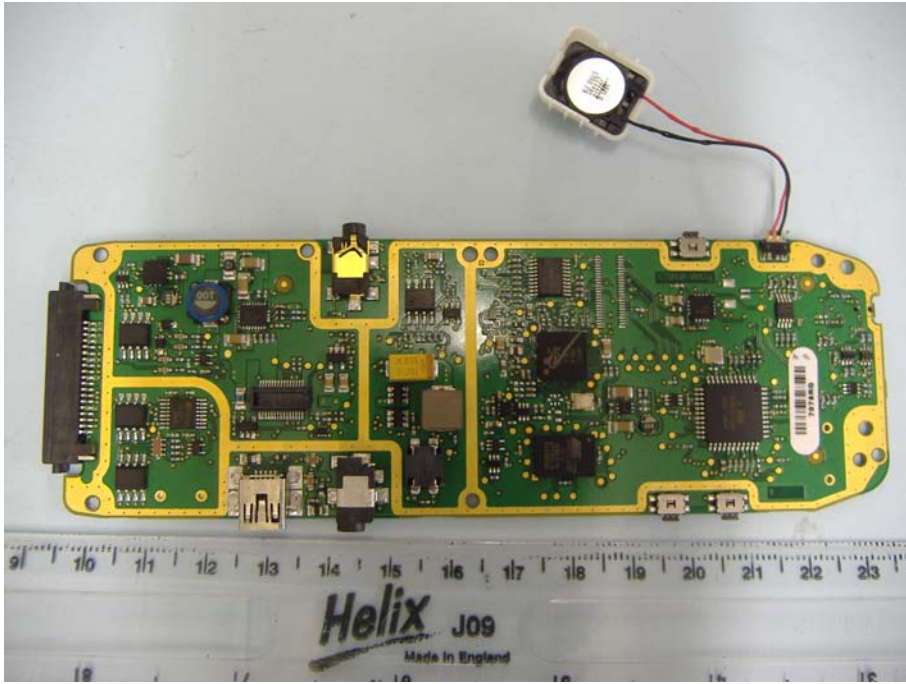
**Inner Faces of Assembled PCBs**



**Interface PCB, Keypad Side, LCD Removed**

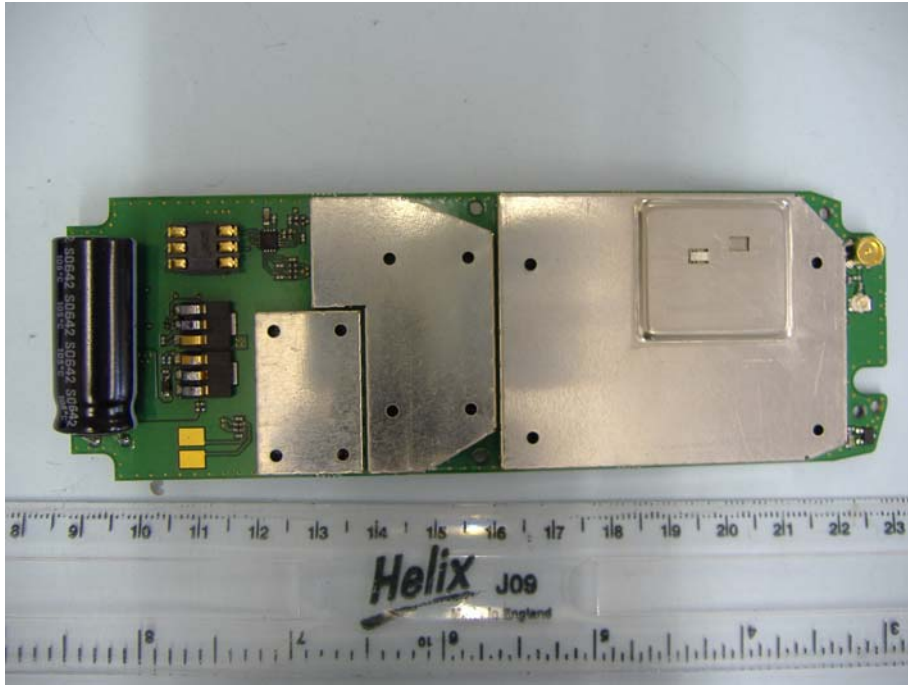


**Rear of LCD**

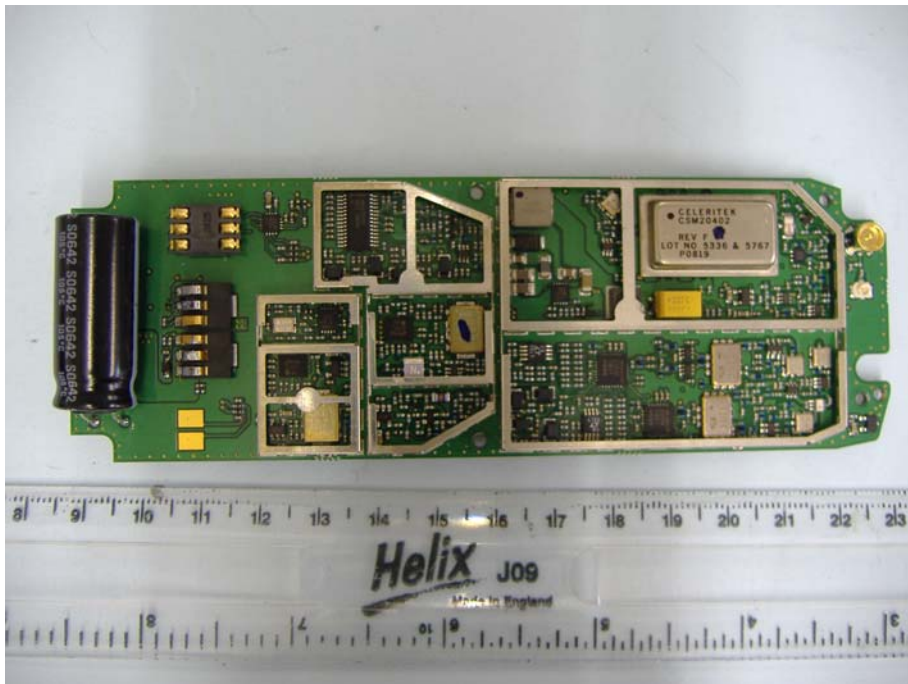


**Interface PCB Component Side**

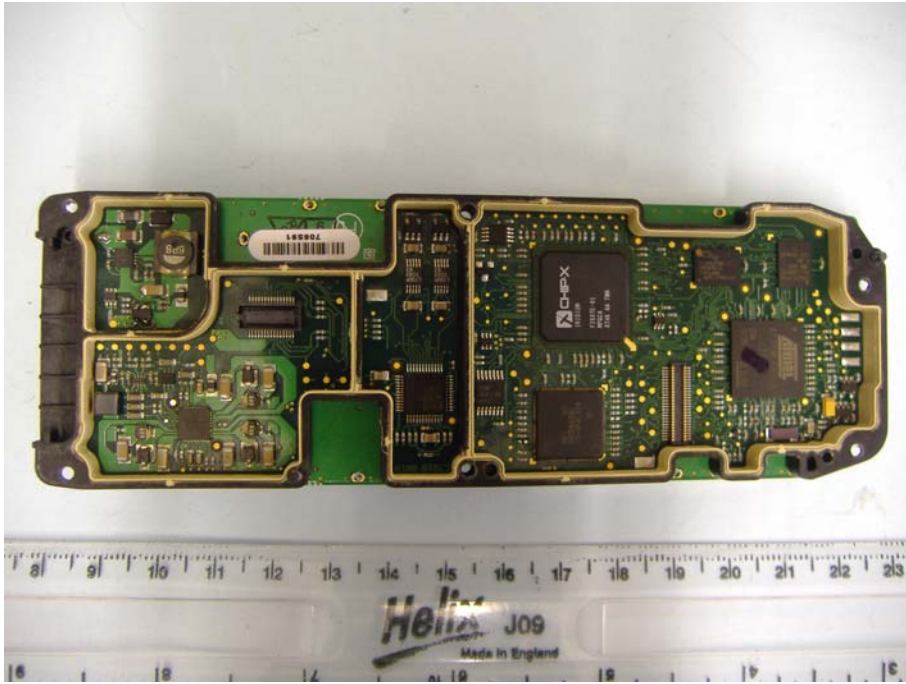




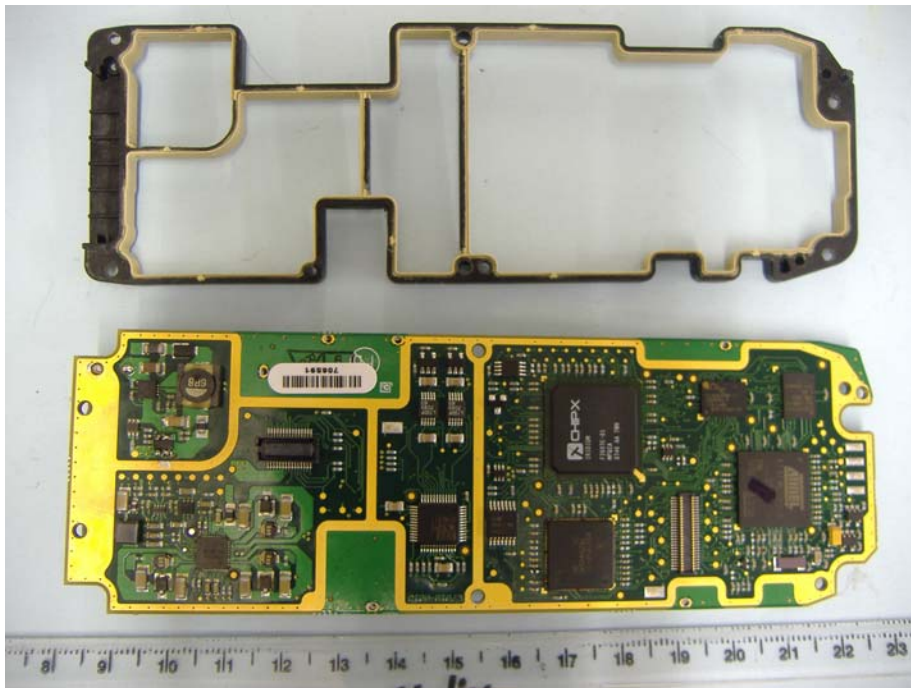
**RF Side of PCB**



**RF Side of PCB Cans Removed**



**Rear of RF PCB Gasket In Place**



**Rear of RF PCB Gasket Removed**