

**ELECTROMAGNETIC EMISSIONS COMPLIANCE REPORT PRIVATE
INTENTIONAL RADIATOR CERTIFICATION TO
FCC PART 15 SUBPART C REQUIREMENT
OF**

Wireless Wheel Mouse

MODEL No.: CST-618

BRAND NAME: N/A

FCC ID: Q5X-00618-N

REPORT NO: 030028-RF-ID

ISSUE DATE: Mar. 07, 2003

Prepared for
**Southern Telecommunication Development CO., LTD.
Block 7, No. 21, Jiangbei Yunshan East Road,
Huizhou, Guangdong, China**

Prepared by
**C&C LABORATORY, CO., LTD.
#B1, 1st Fl., Universal Center,
No. 183, Sec. 1, Tatung Rd., Hsi Chih,
Taipei Hsien, Taiwan, R.O.C.**



TEL: (02)8642-2071~3

FAX: (02)8642-2256



Table of Contents

1.	GENERAL INFORMATION.....	4
1.1	PRODUCT DESCRIPTION.....	4
1.2	RELATED SUBMITTAL(S) / GRANT (S).....	4
1.3	TEST METHODOLOGY.....	4
1.4	TEST FACILITY	4
1.	SYSTEM TEST CONFIGURATION	5
2.1	EUT CONFIGURATION	5
2.2	EUT EXERCISE.....	5
2.3	TEST PROCEDURE	5
2.4	LIMITATION	5
2.5	CONFIGURATION OF TESTED SYSTEM.....	7
2.	SUMMARY OF TEST RESULTS.....	9
3.	DESCRIPTION OF TEST MODES.....	9
4.	CONDUCTED EMISSIONS TEST (NOT APPLICABLE IN THIS REPORT).....	10
5.1	MEASUREMENT PROCEDURE:.....	10
5.2	TEST SET-UP (BLOCK DIAGRAM OF CONFIGURATION).....	10
5.3	MEASUREMENT EQUIPMENT USED:.....	10
5.4	MEASUREMENT RESULT:.....	10
4.5	CONDUCTED MEASUREMENT PHOTOS:.....	10
5.	RADIATED EMISSION TEST.....	11
6.1	MEASUREMENT PROCEDURE.....	11
6.2	TEST SET-UP (BLOCK DIAGRAM OF CONFIGURATION).....	12
6.3	MEASUREMENT EQUIPMENT USED:.....	13
6.4	FIELD STRENGTH CALCULATION.....	13
6.5	MEASUREMENT RESULT	14
6.6	MEASUREMENT RESULT	15
6.	OCCUPIED BANDWIDTH.....	16



7.1	MEASUREMENT PROCEDURE.....	16
7.2	TEST SET-UP (BLOCK DIAGRAM OF CONFIGURATION).....	16
7.3	MEASUREMENT EQUIPMENT USED:.....	16
7.4	MEASUREMENT RESULTS:.....	16

APPENDIX 1

PHOTOGRAPHS OF SET UP	18
------------------------------------	-----------

APPENDIX 2

PHOTOGRAPHS OF EUT.....	20
--------------------------------	-----------

1. GENERAL INFORMATION

1.1 Product Description

The Southern Telecommunication Development CO., LTD. Model: Cst-618 (referred to as the EUT in this report) The EUT is an short range, lower power, wireless optical mouse designed as an " Input Device. It is designed by way of utilizing the FSK modulation achieves the system operating.

A major technical descriptions of EUT is described as following:

- A). Operation Frequency: 27.045 MHz, one channel.
- B). Modulation: Frequency Shifting Key (FSK) Modulation
- C). Antenna Designation: A permanent fixed antenna, which is built-In, designed as an indispensable part of the EUT.
- D). Power Supply: 3 Vdc by AAA *2 battery.

1.2 Related Submittal(s) / Grant (s)

This submittal(s) (test report) is intended for FCC ID: Q5X-00618-N filing to comply with Section 15.227 of the FCC Part 15, Subpart C Rules. The composite system (receiver) is compliance with Subpart B is authorized under a DoC procedure.

1.3 Test Methodology

Both conducted and radiated testing were performed according to the procedures in ANSI C63.4 (1992). Radiated testing was performed at an antenna to EUT distance 3 meters.

1.4 Test Facility

The open area test site and conducted measurement facility used to collect the radiated data is located on the address of C&C Laboratory, Co., Ltd. No. 81-1, 210 Lane, Pa-de 2nd Road, Lu-Chu Hsiang, Taoyuan, Taiwan, R.O.C.. The Open Area Test Sites and the Line Conducted labs are constructed and calibrated to meet the FCC requirements in documents ANSI C63.4: 1992 and CISPR 22/EN 55022 requirements.

1.5 Special Accessories

Not available for this EUT intended for grant.

1.6 Equipment Modifications

Not available for this EUT intended for grant.

1. System Test Configuration

2.1 EUT Configuration

The EUT configuration for testing is installed on RF field strength measurement to meet the Commissions requirement and operating in a manner which intends to maximize its emission characteristics in a continuous normal application.

2.2 EUT Exercise

The Transmitter was operated in the normal operating mode. the Tx frequency was fixed which was for the purpose of the measurements.

2.3 Test Procedure

2.3.1 Conducted Emissions (Not apply in the report)

The EUT is a placed on as turn table which is 0.8 m above ground plane. According to the requirements in Section 13.1.4.1 of ANSI C63.4-1992. Conducted emissions from the EUT measured in the frequency range between 0.15 MHz and 30MHz using CISPR Quasi-Peak and average detector mode.

2.3.2 Radiated Emissions

The EUT is a placed on as turn table which is 0.8 m above ground plane. The turn table shall rotate 360 degrees to determine the position of maximum emission level. EUT is set 3m away from the receiving antenna which varied from 1m to 4m to find out the highest emission. And also, each emission was to be maximized by changing the polarization of receiving antenna both horizontal and vertical. In order to find out the max. emission, the relative positions of this hand-held transmitter(EUT) was rotated through three orthogonal axes according to the requirements in Section 13.1.4.1 of ANSI C63.4-1992.

2.4 Limitation

(1) Conducted Emission (Not applicable in this report)

According to section 15.207(a) Conducted Emission Limits is as following.

Frequency range MHz	Limits dB(uV)	
	Quasi-peak	Average
0.15 to 0.50	66 to 56	56 to 46
0.50 to 5	56	46
5 to 30	60	50
Note 1.The lower limit shall apply at the transition frequencies 2.The limit decreases linearly with the logarithm of the frequency in the range 0.15 MHz to 0.50 MHz.		

(2) Radiated Emission

- The field strength of any emission within this band (section 15.227 frequency between 26.96MHz -27.28MHz) shall not exceed 10000 micro volts/meter at 3 meters. (80dB μ V at 3m) The emission limit in this paragraph is based on measurement instrumentation employing an average detector. The provisions in section 15.35 for limiting peak emissions apply.
- The field strength of any emissions which appear outside of this band shall not exceed the general radiated emission limits in section 15.209(Intentional Radiators general limit).as below.

Frequency (MHz)	Field strength μ V/m	Distance(m)	Field strength at 3m dB μ V/m
1.705-30	30	30	69.54
30-88	100	3	40
88-216	150	3	43.5
216-960	200	3	46
Above 960	500	3	54

- Remark:
- Emission level in dB μ V/m=20 log (uV/m)
 - Measurement was performed at an antenna to the closed point of EUT distance of meters.
 - Only spurious frequency is permitted to locate within the Restricted Bands specified in provision of § 15.205
 - Emission spurious frequency which appearing within the Restricted Bands specified in provision of § 15.205, then the general radiated emission limits in § 15.209 apply.

2.5 Configuration of Tested System

Fig. 2-1 Configuration of Tested System

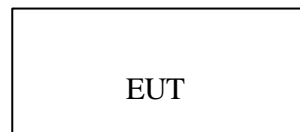


Table 2-1 Equipment Used in Tested System

Item	Equipment	Mfr/Brand	Model/Type No.	FCC ID	Series No.	Note
1	Wireless wheel mouse	Southern Telecommunication Development CO., LTD.	Cst-618	Q5X-00618-N	N/A	EUT

Note:

- (1) Unless otherwise denoted as EUT in 『Remark』 column , device(s) used in tested system is a support equipment.

2. Summary Of Test Results

FCC Rules	Description Of Test	Result
§5.207	Conducted Emission	N/A
§5.227	Radiated Emission	Compliant
§5.227	26 dB Bandwidth	Compliant

3. Description of test modes

The EUT (WIRELESS WHEEL MOUSE) has been tested under normal operating condition.
The EUT stay in continuous transmitting mode. The Frequency 27.045MHz are chosen for testing.

4. Conducted Emissions Test (Not applicable in this report)

5.1 Measurement Procedure:

1. The EUT was placed on a table which is 0.8m above ground plane.
2. Maximum procedure was performed on the six highest emissions to ensure EUT compliance.
3. Repeat above procedures until all frequency measured were complete.

5.2 Test SET-UP (Block Diagram of Configuration)

5.3 Measurement Equipment Used:

Conducted Emission Test Site # 3					
EQUIPMENT TYPE	MFR	MODEL NUMBER	SERIAL NUMBER	LAST CAL.	CAL DUE.
EMI Test Receiver	R&S	ESCS30	847793/012	12/21/2002	12/20/2003
LISN	R&S	ESH2-Z5	843285/010	12/16/2002	12/15/2003
LISN	EMCO	3825/2	9003-1628	07/26/2002	07/25/2003
Spectrum Analyzer	ADVANTEST	R3261A	91720031	N/A	N/A
2X2 WIRE ISN	R&S	ENY22	100020	06/20/2002	06/19/2003
FOUR WIRE ISN	R&S	ENY41	100006	06/20/2002	06/19/2003

5.4 Measurement Result: N/A

4.5 Conducted Measurement Photos: N/A



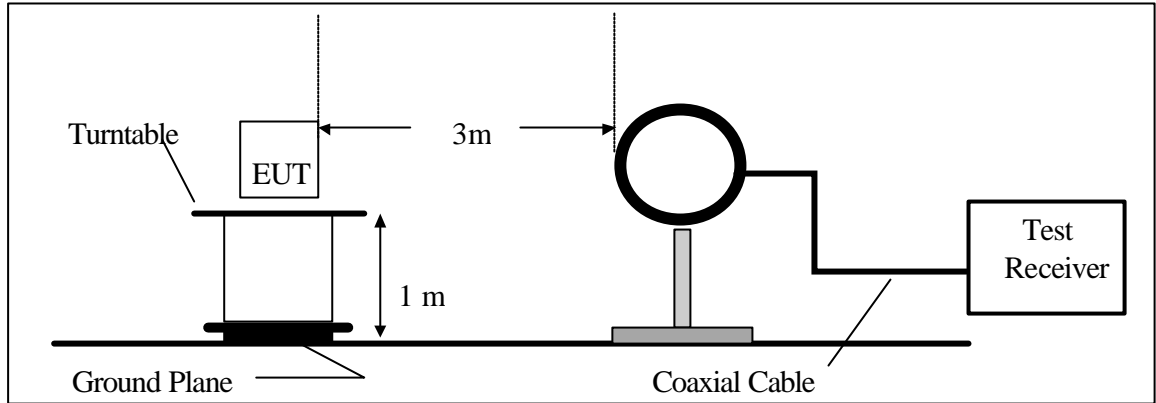
5. Radiated Emission Test

6.1 Measurement Procedure

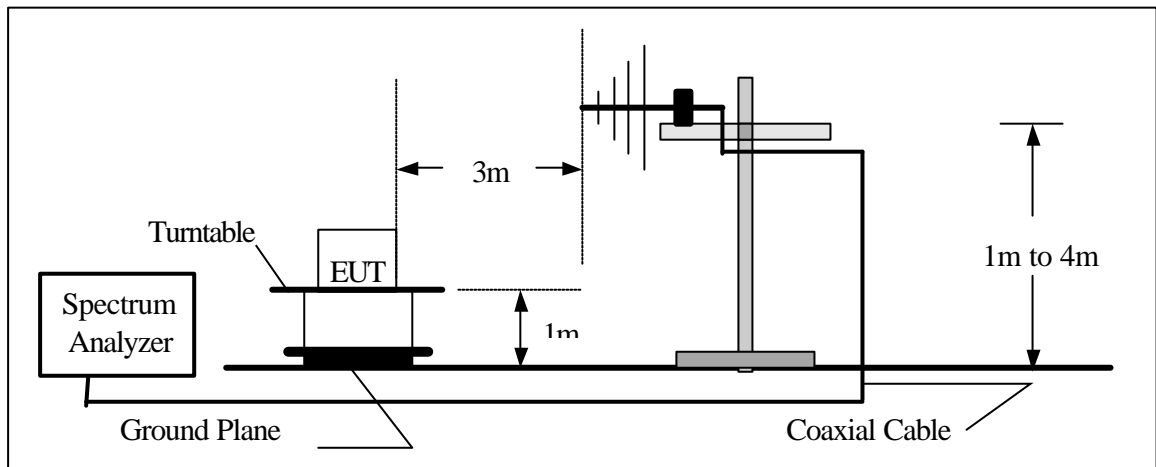
1. The EUT was placed on a turn table which is 0.8m above ground plane.
2. Maximum procedure was performed on the six highest emissions to ensure EUT compliance.
3. And also, each emission was to be maximized by changing the polarization of receiving antenna both horizontal and vertical.
4. Repeat above procedures until all frequency measured were complete.

6.2 Test SET-UP (Block Diagram of Configuration)

(A) Radiated Emission Test Set-Up, Frequency Below 30MHz



(B) Radiated Emission Test Set-Up, Frequency Below 1000MHz



6.3 Measurement Equipment Used:

Open Area Test Site # 3					
EQUIPMENT TYPE	MFR	MODEL NUMBER	SERIAL NUMBER	LAST CAL.	CAL DUE.
Spectrum Analyzer	ADVANTEST	R3261A	N/A	N/A	N/A
EMI Test Receiver	R&S	ESVS20	838804/004	01/09/2003	01/08/2004
Pre-Amplifier	HP	8447D	2944A09173	03/03/2003	03/02/2004
Bilog Antenna	SCHWAZBECK	VULB9163	145	07/06/2002	07/05/2003
Turn Table	EMCO	2081-1.21	9709-1885	N.C.R	N.C.R
Antenna Tower	EMCO	2075-2	9707-2060	N.C.R	N.C.R
Controller	EMCO	2090	9709-1256	N.C.R	N.C.R
RF Switch	ANRITSU	MP59B	M53867	N.C.R	N.C.R
Site NSA	C&C	N/A	N/A	09/07/2002	09/06/2003
Thermo-Hygro Meter	SATO	N/A	SITE3	05/06/2002	05/05/2003

6.4 Field Strength Calculation

The field strength is calculated by adding the Antenna Factor and Cable Factor and subtracting the Amplifier Gain and Duty Cycle Correction Factor(if any) from the measured reading. The basic equation with a sample calculation is as follows:

$$FS = RA + AF + CL - AG$$

Where FS = Field Strength	CL = Cable Attenuation Factor (Cable Loss)
RA = Reading Amplitude	AG = Amplifier Gain
AF = Antenna Factor	

6.5 Measurement Result

Operation Mode:	Transmitting Mode			Test Date :	Mar. 06, 2003
Fundamental Frequency:	27.045 MHz			Test By:	Devin
Temperature :	26	Humidity :	68 %	Pol:	Vertical

Freq. (MHz)	Ant.Pol. H/V	DetectorMode (PK/OP/AV)	Reading (dBuV)	Ant./CL/ Amp. CF(dB)	Actual FS (dBuV/m)	Limit3m (dBuV/m)	Margin (dB)	Note
27.045	V	Peak	58.04	-11.23	46.81	80.00	-33.19	F
81.300	V	Peak	6.75	9.85	16.60	40.00	-23.40	H
135.300	V	Peak	4.73	11.03	15.76	43.50	-27.74	H
189.300	V	Peak	5.24	13.86	19.10	43.50	-24.40	H
270.840	V	Peak	10.77	15.81	26.58	46.00	-19.42	H
514.200	V	Peak	3.27	23.01	26.28	46.00	-19.72	H

Remark :

- (1) Measuring frequencies from 25 MHz to the 1GHz.
- (2) Radiated emissions measured in frequency range from 25 MHz to 1000MHz were made with an instrument using Peak detector mode.
- (3) Field strength limits for frequency above 1000MHz are based on average limits. However, Peak mode field strength shall not exceed the average limits specified plus 20dB
- (4) "F" denotes fundamental frequency; "H" denotes spurious frequency. "E" denotes band edge frequency.
- (5) * denotes emission frequency which appearing within the Restricted Bands specified in provision of 15.205, then the general radiated emission limits in 15.209 apply.
- (6) Datas of measurement within this frequency range shown " - " in the table above means the reading of emissions are attenuated more than 20dB below the permissible limits or the field strength is too small to be measured.
- (7) The IF bandwidth of SPA between 25MHz to 30MHz was 10KHz; 30MHz to 1GHz was 100KHz.

6.6 Measurement Result

Operation Mode:	Transmitting Mode			Test Date :	Mar. 06, 2003
Fundamental Frequency:	27.045 MHz			Test By:	Devin
Temperature :	26	Humidity :	68 %	Pol:	Horizontal

Freq. (MHz)	Ant.Pol. H/V	DetectorMode (PK/QP/AV)	Reading (dBuV)	Ant./CL/ Amp. CF(dB)	Actual FS (dBuV/m)	Limit3m (dBuV/m)	Margin (dB)	Note
27.045	H	Peak	61.53	-11.23	50.30	80.00	-29.70	F
135.300	H	Peak	8.29	11.03	19.32	43.50	-24.18	H
162.300	H	Peak	6.87	11.56	18.43	43.50	-25.07	H
270.840	H	Peak	11.69	15.81	27.50	46.00	-18.50	H

Remark :

- (1) Measuring frequencies from 25 MHz to the 1GHz.
- (2) Radiated emissions measured in frequency range from 25 MHz to 1000MHz were made with an instrument using Peak detector mode.
- (3) Field strength limits for frequency above 1000MHz are based on average limits. However, Peak mode field strength shall not exceed the average limits specified plus 20dB
- (4) "F" denotes fundamental frequency; "H" denotes spurious frequency. "E" denotes band edge frequency.
- (5) * denotes emission frequency which appearing within the Restricted Bands specified in provision of 15.205, then the general radiated emission limits in 15.209 apply.
- (6) Datas of measurement within this frequency range shown " - " in the table above means the reading of emissions are attenuated more than 20dB below the permissible limits or the field strength is too small to be measured.
- (7) The IF bandwidth of SPA between 25MHz to 30MHz was 10KHz; 30MHz to 1GHz was 100KHz.

6. Occupied Bandwidth

7.1 Measurement Procedure

1. The EUT was placed on a turn table which is 0.8m above ground plane.
2. Set EUT as normal operation
3. Set SPA Center Frequency = fundamental frequency, RBW,VBW= 10KHz, Span =200KHz.
4. Set SPA Max hold. Mark peak, -26dB.

7.2 Test SET-UP (Block Diagram of Configuration)

Same as 4.2 Radiated Emission Measurement.

7.3 Measurement Equipment Used:

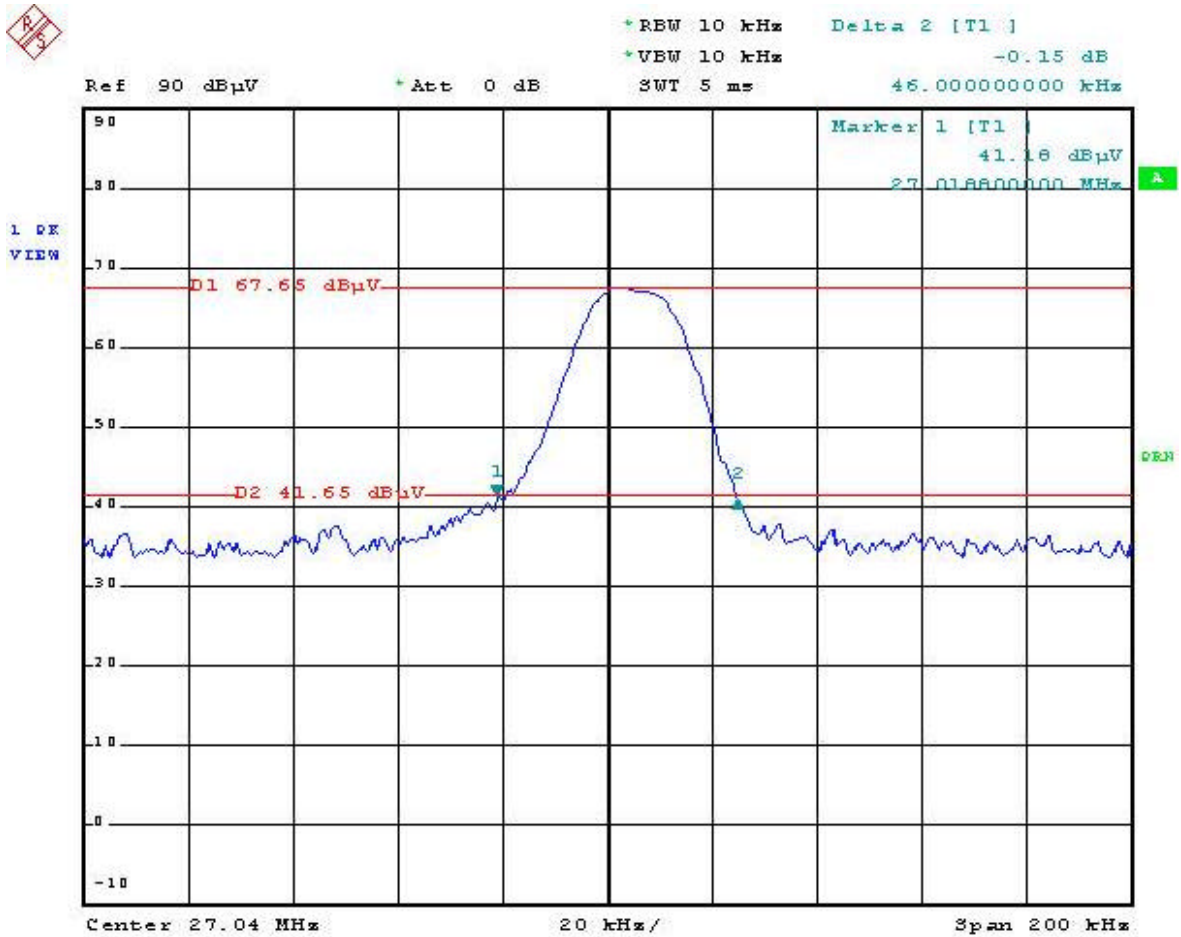
Same as 4.2 Radiated Emission Measurement.

7.4 Measurement Results:

26dB bandwidth = 46 KHz

Refer to attached data chart.

26dB Band Width Test Data



Date: 7.MAR.2003 12:29:55

APPENDIX 1

PHOTOGRAPHS OF SET UP

Radiated Emission Setup Photos



APPENDIX 2

PHOTOGRAPHS OF EUT

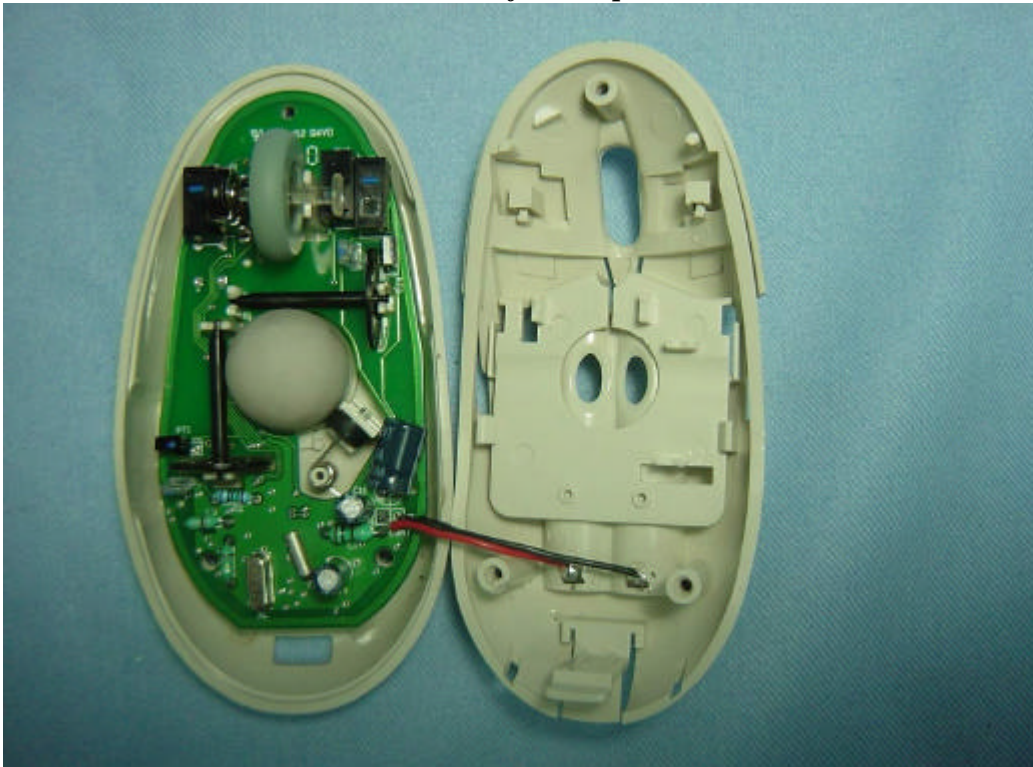
Front View of TX



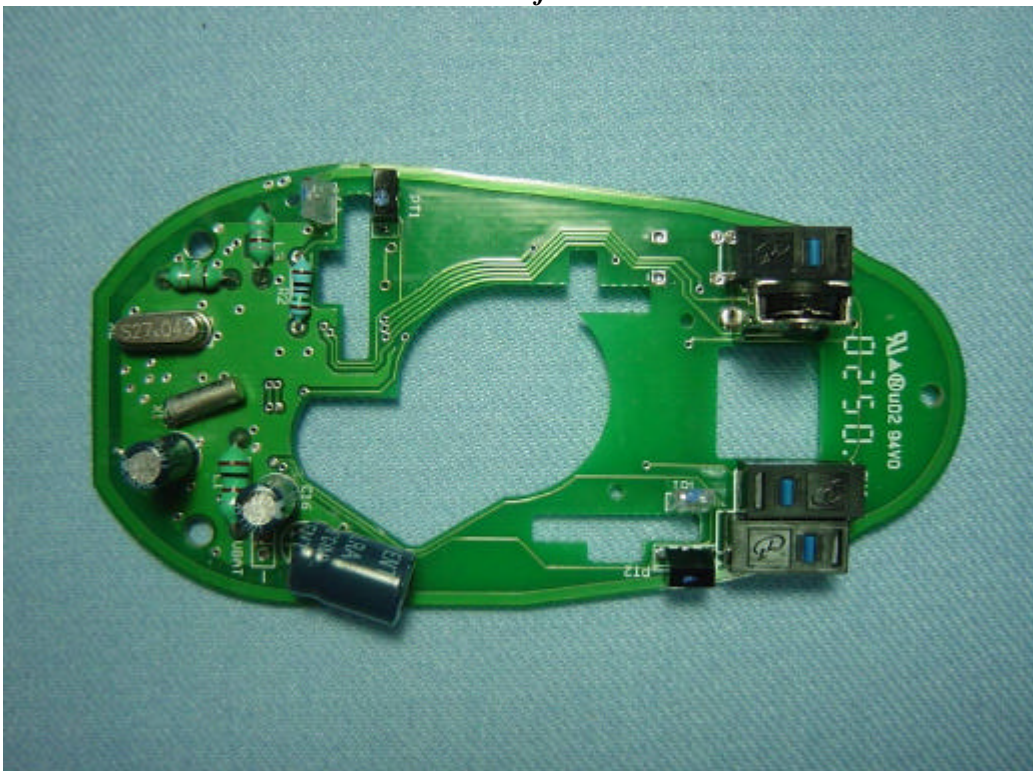
Back View of TX



Internal of TX- Open



Internal of TX- 1



Internal of TX- 2

