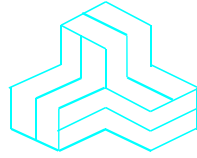


ENGINEERING TEST REPORT



Wireless Microphone Audio Transmitters

Model No.: QT-300A


FCC ID: Q5N-QT300A

IC: 4614A-QT300A

Tested For
Quantum5X Systems Inc
In accordance with

**SAR (Specific Absorption Rate) Requirements using guidelines established in
IEEE C95.1-2010, FCC OET Bulletin 65 (Supplement C), FCC 47CFR Part 2.1093
And Industry Canada RSS-102 (Issue 5)**

UltraTech's File No.: 18Q5X065Q_SAR_A

This Test report is Issued under the Authority of Tri M. Luu, BAsC, Vice President of Engineering UltraTech Group of Labs		
Date: Jan 22, 2018		
Report Prepared by: Nimisha Desai	Tested by: Nimisha Desai and Fahar Sukkoor	
Issued Date: Jan 22, 2018	Test Dates: Nov 13, 2017~ Dec 29, 2017	

- *The results in this Test Report apply only to the sample(s) tested, and the sample tested is randomly selected.*
- *This report must not be used by the client to claim product endorsement by NVLAP or any agency of the US Government.*
- *This test report shall not be reproduced, except in full, without a written approval from UltraTech Group of Labs.*

UltraTech Group of Labs

3000 Bristol Circle, Oakville, Ontario, Canada, L6H 6G4

Tel.: (905) 829-1570 Fax.: (905) 829-8050

Website: www.ultratech-labs.com , Email: vic@ultratech-labs.com , Email: tri@ultratech-labs.com



91038



1309



46390-2049



AT-1945



SL2-IN-E-1119R



Korea
KCC-RRR

CA2049

TABLE OF CONTENTS

EXHIBIT 1. INTRODUCTION	2
SCOPE.....	2
REVISION HISTORY	2
REFERENCES	3
EXHIBIT 2. PERFORMANCE ASSESSMENT.....	4
CLIENT AND MANUFACTURER INFORMATION	4
DEVICE UNDER TEST (D.U.T.) DESCRIPTION.....	5
LIST OF D.U.T.'S ACCESSORIES:.....	10
SPECIFIC OPERATING AND TEST CONDITIONS.....	11
EXHIBIT 3. SUMMARY OF TEST RESULTS	12
LOCATION OF TESTS	12
APPLICABILITY & SUMMARY OF SAR RESULTS	12
SUMMARY OF MEASUREMENT RESULTS	13
EXHIBIT 4. SAR SYSTEM CONFIGURATION	14
DASY5 SYSTEM OVERVIEW.....	14
SAR TEST PHANTOMS.....	18
EXHIBIT 5. SAR DATA ACQUISITION METHODOLOGY	19
SAR MEASUREMENT PROCEDURE.....	19
EXHIBIT 6. MEASUREMENTS, EXAMINATIONS & TEST DATA.....	23
TEST CONFIGURATIONS.....	23
GENERAL TEST SETUP	24
PHOTOGRAPHS OF TISSUE DEPTH AND EUT FOR BODY CONFIGURATION	25
EXHIBIT 7. SAR MEASUREMENT SYSTEM VERIFICATION	29
STANDARD SOURCE.....	29
STANDARD SOURCE INPUT POWER MEASUREMENT	30
SYSTEM VALIDATION PROCEDURE.....	30
VERIFICATION RESULTS	31
FILE NAME: SYS.VER.CHECK-D450MHZ_HEAD.DA52:0	32
FILE NAME: SYS.VER.CHECK-D450MHZ_BODY.DA52:0	33
EXHIBIT 8. D.U.T. POWER MEASUREMENT	34
RF CONDUCTED OUTPUT POWER MEASUREMENT.....	35
EXHIBIT 9. TISSUE DIELECTRIC PARAMETER CALIBRATION.....	39
SIMULATED TISSUE.....	39
MEASUREMENT OF ELECTRICAL CHARACTERISTICS OF SIMULATED TISSUE.....	40
SIMULATED TISSUE MEASUREMENT RESULTS	42
EXHIBIT 10. SAR MEASUREMENT UNCERTAINTY	43
MEASUREMENT UNCERTAINTY EVALUATION FOR SAR TEST	43
EXHIBIT 11. ADDITIONAL TEST INSTRUMENTS LIST	44
EXHIBIT 12. SAR MEASUREMENT DATA	44
EXHIBIT 13. SAR CALIBRATION CERTIFICATE	44

EXHIBIT 1. INTRODUCTION

SCOPE

Reference:	SAR (Specific Absorption Rate) Requirements IEEE C95.1-2010, FCC OET Bulletin 65 (Supplement C Edition 01-01), FCC 47CFR Part 2.1093 Industry Canada RSS-102 (Issue 5).
Title	Safety Levels with respect to human exposure to Radio Frequency Electromagnetic Fields Guideline for Evaluating the Environmental Effects of Radio Frequency Radiation
Purpose of Test:	To verify compliance with Federal regulated SAR requirements in Canada and the US.
Method of Measurements:	IEEE C95.1-2010, FCC OET Bulletin 65 (Supplement C Edition 01-01) and Industry Canada RSS-102 (Issue 5)
Device Category	Portable
Exposure Category	General Public

Revision history

Document	Issue Date	Description
18Q5X065Q_SAR_A	Jan 22, 2018	Original

REFERENCES

The methods and procedures used for the measurements contained in this report are details in the following reference standards:

Publications	Year	Title
IEEE Std. 1528	2013	Draft Recommended practice for determining the Peak Spatial-Average Specific Absorption rate (SAR) in the Human Body Due to Wireless Communications Devices: Experimental Techniques.
Industry Canada RSS-102, Issue 5	2015	“Evaluation Procedure for Mobile and Portable Radio Transmitters with respect to Health Canada’s Safety Code 6 for Exposure of Humans to Radio Frequency Fields”
NCRP Report No.86	1986	“Biological Effects and Exposure Criteria for radio Frequency Electromagnetic Fields”
FCC OET Bulletin 65	2001	“Evaluating Compliance with FCC Guidelines for Human Exposure to radio Frequency Fields”
ANSI/IEEE C95.3	2002	“Recommended Practice for the Measurement of Potentially Hazardous Electromagnetic Fields - RF and Microwave”
ANSI/IEEE C95.1	2010	“Safety Levels with Respect to Human Exposure to Radio Frequency Electromagnetic Fields, 3kHz to 300GHz”
ARPANSA	2002	RADIATION PROTECTION STANDARD Maximum Exposure Levels to Radiofrequency Fields — 3 kHz to 300 GHz Radiation Protection Series Publication No. 3
EN 50566	2013	Product standard to demonstrate compliance of radio frequency fields from handheld and body-mounted wireless communication devices used by the general public (30 MHz - 6 GHz)
EN 62479	2010	Assessment of the compliance of low power electronic and electrical equipment with the basic restrictions related to human exposure to electromagnetic fields (10 MHz to 300 GHz)
IEC 62209-2	2010	Human exposure to radio frequency fields from hand-held and body-mounted wireless communication devices – Human models, instrumentation, and procedures Part 2: Procedure to determine the specific absorption rate (SAR) for wireless communication devices used in close proximity to the human body (frequency range of 30 MHz to 6 GHz)
FCC KDB	2017	865664 D01 SAR Measurement 100 MHz to 6 GHz 648474 D04 Handset SAR 447498 D01 General RF Exposure Guidance 388624 D01 Permit But Ask Procedure 388624 D02 Permit But Ask List 865664 D02 RF Exposure Reporting 690783 D01 SAR Listings on Grants
Health Canada’s Safety Code 6	2015	Limits of Human Exposure to Radiofrequency Electromagnetic Energy in the Frequency Range from 3 kHz to 300 GHz

EXHIBIT 2. PERFORMANCE ASSESSMENT

CLIENT AND MANUFACTURER INFORMATION

APPLICANT:	
Name:	Quantum5X Systems Inc
Address:	30 Adelaide Street North, London, Ontario, N6B 3N5
Contact Person:	Paul Johnson Phone #: 519-675-6999 Fax #: 519-667-2162 Email Address: paul@q5x.com

MANUFACTURER:	
Name:	Quantum5X Systems Inc
Address:	30 Adelaide Street North, London, Ontario, N6B 3N5
Contact Person:	Paul Johnson Phone #: 519-675-6999 Fax #: 519-667-2162 Email Address: paul@q5x.com

DEVICE UNDER TEST (D.U.T.) DESCRIPTION

The following is the information provided by the applicant.

Trade Name	Quantum5X Systems Inc	
Type/Model Number	QT-300A	
Type of Equipment	Rechargeable Wireless microphone audio transmitter	
Models and Serial Numbers	BeltMic(30054) PlayerMic(30052) AquaMic(30055) Incognito(30053)	
Transmitter Frequency Band	Low 470.25-545 MHz	
RF Power	Device Model	Max RF Power (470.25-545MHz)
	BeltMic(Body Mounted Only)	250mW
	PlayerMic(Body Mounted Only)	100mW
	AquaMic(Body Mounted Only)	250mW
	Incognito(Head and Body Mounted)	100mW
Modulation Employed	FM	
Antenna	Integral (1/4 Wave Wire Antenna soldered to the PCB)	
Power Supply	Rechargeable Li-Ion battery pack	
Primary User Functions of D.U.T.	Wireless Microphone Audio Transmitter	

The QT-300 series of wireless microphone transmitters are professional broadcast quality body mounted/worn wireless devices used in professional entertainment venues such as Broadway stage productions and major sporting events. The QT-300 series consists of four models that may operate in three wireless microphone frequency bands. This SAR evaluation covers 4 Low Band model types.

Photograph of D.U.T

Low Band Samples:



< BeltMic's front view >



< BeltMic's rear view >



< PlayerMic's front view >



< PlayerMic's rear view >



< AquaMic's front view >



< AquaMic's rear view >



< Incognito's front view >



< Incognito's rear view >

LIST OF D.U.T.'S ACCESSORIES:

Microphone accessories



Specific Operating and test Conditions

Channel Frequencies selected for test per IEEE Std. 1528:2013 Section 6.3.5

Low Band 470.25-545 MHz	Frequency			# Test	Test Frequencies (MHz)				
	Low	High	Centre	Channels	F1	F2	F3	F4	F5
	470.0	545.0	507.5	5	470	489	508	526	545

1. RF Exposure Test Reduction may be applied per FCC KDB 865664 D01 SAR Measurement 100 MHz to 6 GHz and FCC KDB 447498 D01 General RF Exposure Guidance.
2. For Body worn configurations, the wireless devices were assessed to have to main faces which could be mounted against the body. The manufacturer stipulates that the normal mounting position is with the LED and control adjustments mounted facing away from the body. This face is referenced as the Front of the device. In reviewing the various devices, it was observed that the antenna separation distance is closest when the device is mounted with the Front Face towards the Body and this mounting configuration was considered to provide the worst case RF exposure conditions. The protocol followed would be to test the worst case mounting configurations for all Test channel frequencies. The test channel frequency which resulted in the highest SAR exposure value would then be used to test the other mounting configuration. If that SAR exposure value was found to be higher, then additional adjacent test channel frequencies would be investigated.
3. The separation distance used in all body and head mounted configurations is 0mm in the touch positions.
4. The manufacture has stated that the Incognito is the only QT-300 model that is small enough for head mounted applications, so this model was evaluated for both head and body mounted operations with 0mm separation distance as the worst case RF Exposure condition.
5. SAR scaling was carried out to account for any positive power drift and RF conducted power reduction if applicable. No SAR scaling is applied to negative power drift.
6. All the QT-300 models employ a certified RF module capable of 10mW, 25mW, 50mW, 100mW and 250mW settings. This SAR RF exposure investigation determines the appropriate RF power setting for each of the QT-300 model to be set to meet the RF Exposure limits specified for general population exposure levels.

EXHIBIT 3. SUMMARY OF TEST RESULTS

LOCATION OF TESTS

All of the measurements described in this report were performed at UltraTech Group of Labs located at:
 3000 Bristol Circle, the city of Oakville, Province of Ontario, Canada.

All measurements were performed in UltraTech’s shielded chamber, 16’ x 13’ x 8’.

APPLICABILITY & SUMMARY OF SAR RESULTS

SAR LIMITS – General Population					
	Australia	North America	Europe	Japan	New Zealand
	ACA	ANSIC95.1	ENV50166	TTC/MPT	NZS2772
Whole Body	0.08 W/kg	0.08 W/kg	0.08 W/kg	0.04 W/kg	0.08 W/kg
Spatial Peak	2 W/kg	1.6 W/kg	2 W/kg	2 W/kg	2 W/kg
Averaging Time	6 min	30 min	6 min	6 min	6 min
Averaging Time	10g	1g	10g	10g	10g
Shape	Cube	Cube	Cube	Cube	Cube

The maximum peak spatial – 1g average SAR measured was found to **0.882 W/Kg** for head configuration and **1.522W/Kg** for body configuration with power reduction to 100mW and scaled for power drift.

The limit for SAR 1 gram average peak spatial average is **1.6W/Kg** for General Public/un-controlled exposure.

QT-300 Model	RF Power	SAR (W/Kg)	Exposure Condition
QT-300 Belt Mic	250mW	1.508	Body – Front Side Touching
QT-300 PlayerMic	100mW	1.147	Body – Front Side Touching
QT-300 AquaMic	250mW	1.522	Body – Front Side Touching
QT-300 Incognito	100mW	0.882	Head – Front Side Touching

Summary of measurement results*

Reported¹ (SAR for Head and Body (scaled for Power Drift and Power Reduction))

Body SAR Measurements

Device Model	Device S/N	Channel	Frequency (MHz)	Power (dBm)	Device Back Facing Phantom (Required Mounting per User Manual)		Device Front Facing Phantom (Least Antenna Separation Distance)	
					SAR1g (mW/g)	SAR10g (mW/g)	SAR1g (mW/g)	SAR10g (mW/g)
QT-300 BeltMic 250mW	30054	1	470	23.67	0.996	0.646	1.508	0.912
		2	489	23.89	0.933	0.602	1.504	0.903
		3	508	23.84			1.239	0.740
		4	526	23.69			1.141	0.680
		5	545	22.83			0.793	0.472
QT-300 PlayerMic 100mW	30052	1	470	19.93			0.707	0.400
		2	489	20.03	0.975	0.589	1.147	0.915
		3	508	20.03			0.933	0.764
		4	526	19.97			0.866	0.503
		5	545	19.93			0.892	0.499
QT-300 AquaMic 250mW	30055	1	470	23.83			1.409	0.880
		2	489	24.20	0.395	0.257	1.522	0.949
		3	508	24.07			1.324	0.822
		4	526	23.72			1.094	0.677
		5	545	23.11			0.845	0.526
QT-300 Incognito 100mW	30053	1	470	19.87			0.418	0.241
		2	489	19.87			0.319	0.182
		3	508	19.89			0.353	0.205
		4	526	19.99	0.423	0.253	0.467	0.264
		5	545	20.04			0.440	0.249

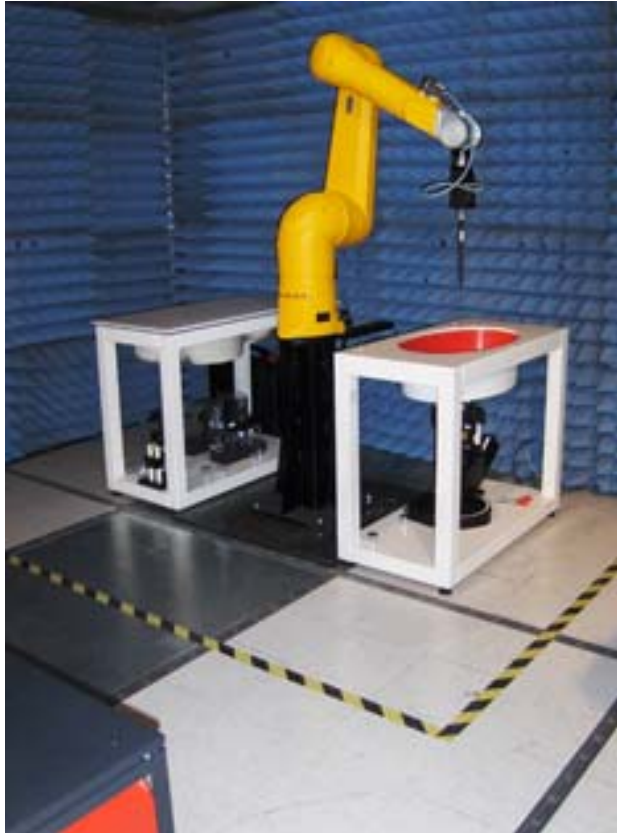
Head SAR Measurements

Device Model	Device S/N	Channel	Frequency (MHz)	Power (dBm)	Device Back Facing Phantom (Required Mounting per User Manual)		Device Front Facing Phantom (Least Antenna Separation Distance)	
					SAR1g (mW/g)	SAR10g (mW/g)	SAR1g (mW/g)	SAR10g (mW/g)
QT-300 Incognito 100mW	30053	1	470	19.87	0.801	0.475	0.882	0.506
		2	489	19.87			0.729	0.422
		3	508	19.89			0.512	0.290
		4	526	19.99			0.433	0.241
		5	545	20.04			0.416	0.234

¹ Reported SAR is scaled for Power Drift and Power Reduction

EXHIBIT 4. SAR SYSTEM CONFIGURATION

DASY5 System OVERVIEW



DASY5 System Specification

Positioning Equipment	Computer
DASAY5 Measurement Server Data Acquisition Electronics (DAE) Light Beam Unit Device Holder Robot (STAUBLI TX90)	Type: HP Compaq dc7800p Convertible CPU : Intel® Core™ 2 Duo E8500 Memory : 2GB RAM Operating System : Windows XP Professional Monitor : HP L1950g LCD

1. DASY5 Measurement Server

The DASY5 measurement server is based on a PC/104 CPU board with a 400MHz Intel ULV Celeron, 128MB chipdisk and 128MB RAM. The necessary circuits for communication with the DAE4 (or DAE3) electronics box, as well as the 16 bit AD converter system for optical detection and digital I/O interface are contained on the DASY5 I/O board, which is directly connected to the PC/104 bus of the CPU board.

The measurement server performs all real-time data evaluation of field measurements and surface detection, controls robot movements and handles safety operation. The PC operating system cannot interfere with these time critical processes. All connections are supervised by a watchdog, and disconnection of any of the cables to the measurement server will automatically disarm the robot and disable all program-controlled robot movements. Furthermore, the measurement server is equipped with an expansion port which is reserved for future applications. Please note that this expansion port does not have a standardized pinout, and therefore only devices provided by SPEAG can be connected. Devices from any other supplier could seriously damage the measurement server.

2. Data Acquisition Electronics

The data acquisition electronics (DAE4 or DAE3) consist of a highly sensitive electrometer-grade preamplifier with auto-zeroing, a channel and gain-switching multiplexer, a fast 16 bit AD-converter and a command decoder with a control logic unit. Transmission to the measurement server is accomplished through an optical downlink for data and status information, as well as an optical uplink for commands and the clock.

The mechanical probe mounting device includes two different sensor systems for frontal and sideways probe contacts. They are used for mechanical surface detection and probe collision detection.

The input impedance of both the DAE4 as well as of the DAE3 box is 200M Ω ; the inputs are symmetrical and floating. Common mode rejection is above 80 dB.

3. Dosimetric Probes

These probes are specially designed and calibrated for use in liquids with high permittivity. They should not be used in air, since the spherical isotropy in air is poor (-2 dB). The dosimetric probes have special calibrations in various liquids at different frequencies.



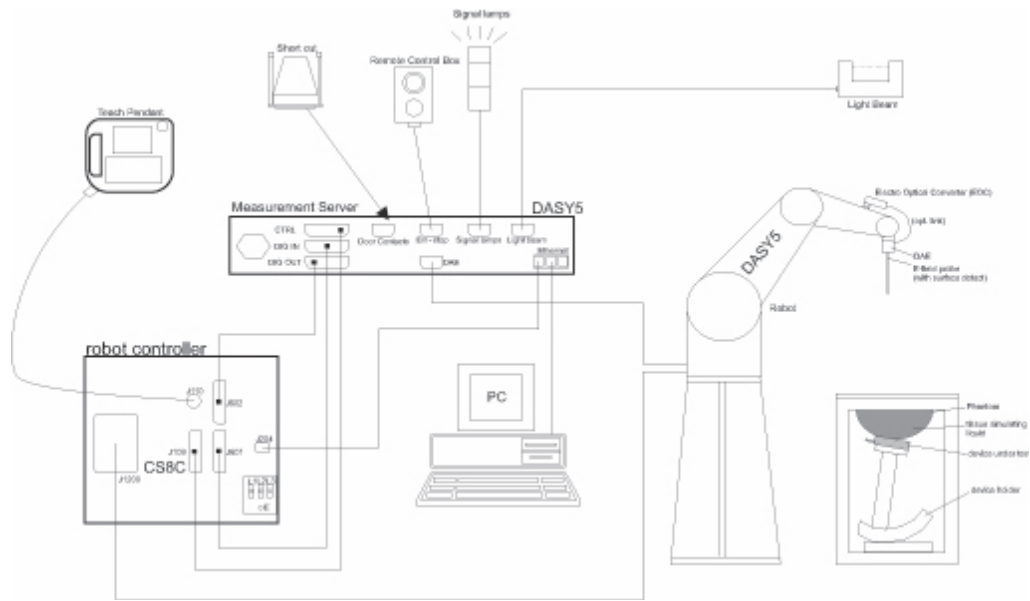
ES3DV3 Isotropic E-Filed Probe

Construction	Symmetrical design with triangular core Interleaved sensors Built-in shielding against static charges PEEK enclosure material (resistant to organic solvents, e.g., DGBE)
Calibration	Basic Broad Band Calibration in air Conversion Factors (CF) for HSL 900 and HSL 1750 Additional CF for other liquids and frequencies
Frequency	10 MHz to 4 GHz Linearity ± 0.2 dB (30 MHz to 4 GHz)
Directivity	± 0.2 dB in HSL (rotation around probe axis) ± 0.3 dB in tissue material (rotation normal to probe axis)
Dynamic Range	5 μ W/g to > 100 mW/g Linearity: ± 0.2 dB
Dimensions	Overall length: 330 mm (Tip: 20 mm) Tip diameter: 3.9 mm (Body: 12 mm) Distance from probe tip to dipole centers: 2.0 mm

EX3DV4 Isotropic E-Filed Probe

Construction	Symmetrical design with triangular core Built-in shielding against static charges PEEK enclosure material (resistant to organic solvents, e.g., DGBE)
Calibration	Basic Broad Band Calibration in air Conversion Factors (CF) for HSL 900 and HSL 1750 Additional CF for other liquids and frequencies
Frequency	10 MHz to > 6 GHz Linearity: ± 0.2 dB (30 MHz to 6 GHz)
Directivity	± 0.3 dB in HSL (rotation around probe axis) ± 0.5 dB in tissue material (rotation normal to probe axis)
Dynamic Range	10 μ W/g to > 100 mW/g Linearity: ± 0.2 dB (noise: typically < 1 μ W/g)
Dimensions	Overall length: 330 mm (Tip: 20 mm) Tip diameter: 2.5 mm (Body: 12 mm) Typical distance from probe tip to dipole centers: 1 mm

DASY5 SAR SYSTEM block diagram



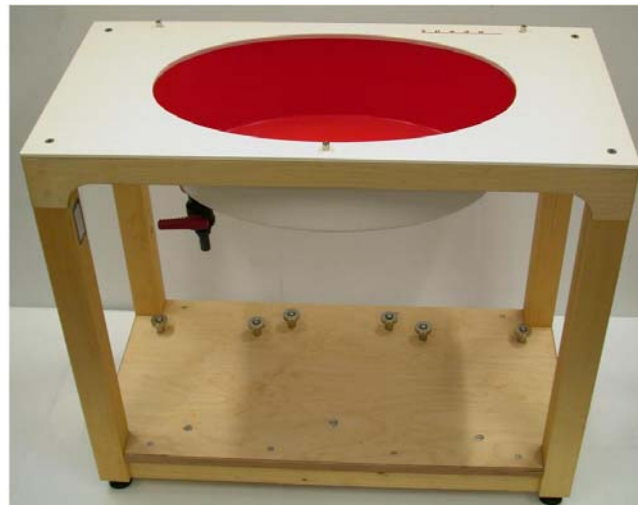
SAR Test Phantoms

SAM Twin Phantom



For Head mounted devices placed next to the ear, the phantom used in the evaluation of the RF exposure of the user of the wireless device is an IEEE P1528 compliant SAM Twin phantom, shaped like a human head and filled with a mixture simulating the dielectric characteristics of the brain. A left sided head and a right sided head are evaluated to determine the worst case orientation for SAR.

ELI 4.0 Phantom

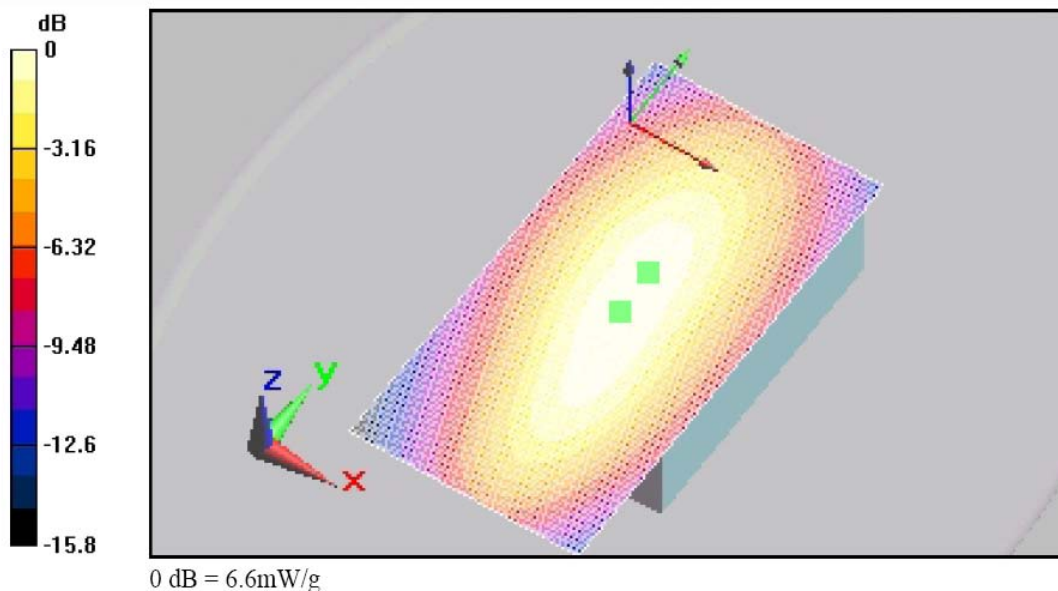


For body mounted and frontal held push-to-talk devices, an IEC 62209-2 compliant Oval Flat Phantom (ELI 4.0) with a base plate thickness of 2mm is used.

EXHIBIT 5. SAR DATA ACQUISITION METHODOLOGY

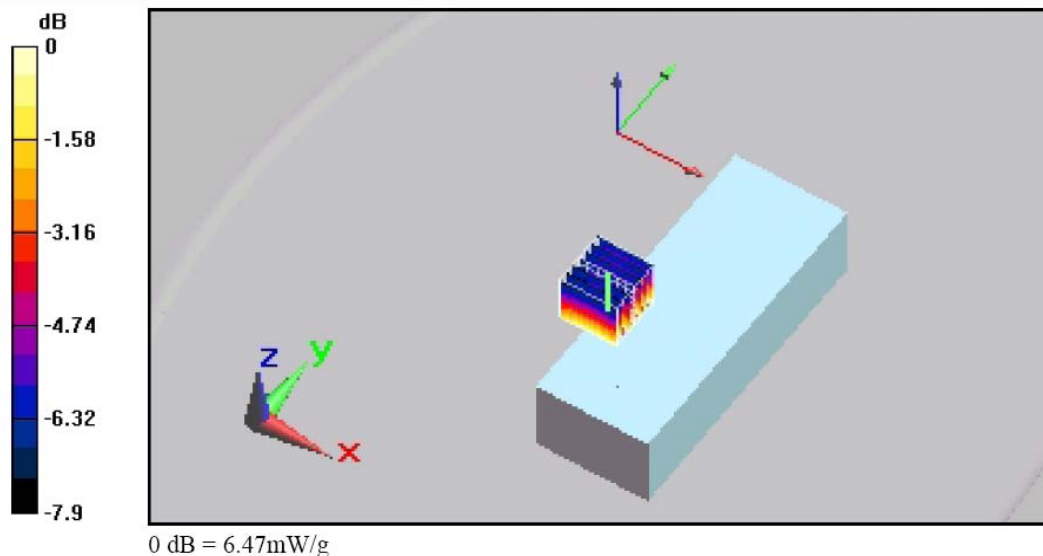
SAR Measurement pROCEDURE

The goal of the measurement process is to scan the phantom over a selected area in order to find the region of highest levels of RF energy and then to obtain a single value for the peak spatial-average of SAR over a volume that would contain one gram (in the shape of a cube) of biological tissue. The test procedure, of course, measures SAR in the simulated tissue.



< Area scan >

The software requests the user to move the probe to locations at two extreme corners of a rectangle that encloses the area to be scanned. An arbitrary origin and the spatial resolution for the scan are also specified. Under program control, the scan is performed automatically by the robot-guided probe.



< Zoom Scan >

The DASYS software includes all numerical procedures necessary to evaluate the spatial peak SAR values.

Based on the Draft: SCC-34, SC-2, WG-2 - Computational Dosimetry, IEEE P1529/D0.0 (Draft Recommended Practice for Determining the Spatial-Peak Specific Absorption Rate (SAR) Associated with the Use of Wireless Handsets - Computational Techniques), a new algorithm has been implemented. The spatial-peak SAR can be computed over any required mass.

The base for the evaluation is a "cube" measurement in a volume of (30mm)³ (7x7x7 points). The measured volume must include the 1 g and 10 g cubes with the highest averaged SAR values. For that purpose, the center of the measured volume is aligned to the interpolated peak SAR value of a previously performed area scan. If the 10g cube or both cubes are not entirely inside the measured volumes, the system issues a warning regarding the evaluated spatial peak values within the postprocessing engine (SEMCAD X). This means that if the measured volume is shifted, higher values might be possible. To get the correct values you can use a finer measurement grid for the area scan. In complicated field distributions, a large grid spacing for the area scan might miss some details and give an incorrectly interpolated peak location.

The entire evaluation of the spatial peak values is performed within the postprocessing engine (SEMCAD X). The system always gives the maximum values for the 1 g and 10 g cubes. The algorithm to find the cube with highest averaged SAR is divided into the following stages:

1. extraction of the measured data (grid and values) from the Zoom Scan
2. calculation of the SAR value at every measurement point based on all stored data (A/D values and measurement parameters)
3. generation of a high-resolution mesh within the measured volume
4. interpolation of all measured values from the measurement grid to the high-resolution grid
5. extrapolation of the entire 3-D field distribution to the phantom surface over the distance from sensor to surface
6. calculation of the averaged SAR within masses of 1 g and 10 g

The significant parts are outlined in more detail within the following sections.

Interpolation, Extrapolation and Detection of Maxima

The probe is calibrated at the center of the dipole sensors which is located 1 to 2.7mm away from the probe tip. During measurements, the probe stops shortly above the phantom surface, depending on the probe and the surface detecting system. Both distances are included as parameters in the probe configuration file. The software always knows exactly how far away the measured point is from the surface. As the probe cannot directly measure at the surface, the values between the deepest measured point and the surface must be extrapolated.

In DASY5, the choice of the coordinate system defining the location of the measurement points has no influence on the uncertainty of the interpolation, Maxima Search and extrapolation routines. The interpolation, extrapolation and maximum search routines are all based on the modified Quadratic Shepard's method.

Thereby, the interpolation scheme combines a least-square fitted function method and a weighted average method which are the two basic types of computational interpolation and approximation. The DASY5 routines construct a once-continuously differentiable function that interpolates the measurement values as follows:

- For each measurement point a trivariate (3-D) / bivariate (2-D) quadratic is computed. It interpolates the measurement values at the data point and forms a least-square fit to neighboring measurement values.
- the spatial location of the quadratic with respect to the measurement values is attenuated by an inverse distance weighting. This is performed since the calculated quadratic will fit measurement values at nearby points more accurate than at points located further away.
- After the quadratics are calculated for at all measurement points, the interpolating function is calculated as a weighted average of the quadratics.

There are two control parameters that govern the behavior of the interpolation method. One specifies the number of measurement points to be used in computing the least-square fits for the local quadratics. These measurement points are the ones nearest the input point for which the quadratic is being computed. The second parameter specifies the number of measurement points that will be used in calculating the weights for the quadratics to produce the final function. The input data points used there are the ones nearest the point at which the interpolation is desired. Appropriate defaults are chosen for each of the control parameters

The trivariate quadratics that have been previously computed for the 3-D interpolation and whose input data are at the closest distance from the phantom surface, are used in order to extrapolate the fields to the surface of the phantom.

In order to determine all the field maxima in 2-D (Area Scan) and 3-D (Zoom Scan), the measurement grid is refined by a default factor of 10 and the interpolation function is used to evaluate all field values between corresponding measurement points. Subsequently, a linear search is applied to find all the candidate maxima. In a last step, non physical maxima are removed and only those maxima which are within 2 dB of the global maximum value are retained.

Important: To be processable by the interpolation/extrapolation scheme, the Area Scan requires at least 6 measurement points. The Cube Scan requires at least 10 measurement points to allow an application of these algorithms.

In the Area Scan, the gradient of the interpolation function is evaluated to find all the extrema of the SAR distribution. The uncertainty on the locations of the extrema is less than 1/20 of the grid size. Only local maxima within -2 dB of the global maximum are searched and passed for the Cube Scan measurement.

In the Cube Scan, the interpolation function is used to extrapolate the Peak SAR from the lowest measurement points to the inner phantom surface (the extrapolation distance). The uncertainty increases with the extrapolation distance. To keep the uncertainty within 1% for the 1 g and 10 g cubes, the extrapolation distance should not be larger than 5mm.

Averaging and Determination of Spatial Peak SAR

The interpolated data is used to average the SAR over the 1g and 10g cubes by spatially discretizing the entire measured volume. The resolution of this spatial grid used to calculate the averaged SAR is 1mm or about 42875 interpolated points. The resulting volumes are defined as cubical volumes containing the appropriate tissue parameters that are centered at the location. The location is defined as the center of the incremental volume (voxel).

The spatial-peak SAR must be evaluated in cubical volumes containing a mass that is within 5% of the required mass. The cubical volume centered at each location, as defined above, should be expanded in all directions until the desired value for the mass is reached, with no surface boundaries of the averaging volume extending beyond the outermost surface of the considered region. In addition, the cubical volume should not consist of more than 10% of air. If these conditions are not satisfied then the center of the averaging volume is moved to the next location. Otherwise, the exact size of the final sampling cube is found using an inverse polynomial approximation algorithm, leading to results with improved accuracy. If one boundary of the averaging volume reaches the boundary of the measured volume during its expansion, it will not be evaluated at all. Reference is kept of all locations used and those not used for averaging the SAR. All average SAR values are finally assigned to the centered location in each valid averaging volume.

All locations included in an averaging volume are marked to indicate that they have been used at least once. If a location has been marked as used, but has never been assigned to the center of a cube, the highest averaged SAR value of all other cubical volumes which have used this location for averaging, is assigned to this location. Only those locations that are not part of any valid averaging volume should be marked as unused. For the case of an unused location, a new averaging volume must be constructed which will have the unused location centered at one surface of the cube. The remaining five surfaces are expanded evenly in all directions until the required mass is enclosed, regardless of the amount of included air. Of the six possible cubes with one surface centered on the unused location, the smallest cube is used, which still contains the required mass.

If the final cube containing the highest averaged SAR touches the surface of the measured volume, an appropriate warning is issued within the postprocessing engine.

Evaluation Errors

4. Cube shape

The mentioned procedures search for the maximum averaged 1g and 10g volumes of cubical shape according to the ANSI and ICNIRP standard. A density of 1000 kg/m³ is used to represent the head tissue density and not the tissue simulating liquid density.

5. Extrapolation

For the extrapolation the distance must be specified in the Area Scan and Zoom Scan Jobs. The distance is defined as the distance between the probe sensor center and the phantom surface. The recommended distance is 4-5 mm.

6. Boundary effects

The dosimetric probes are calibrated in a gradient field with energy flow and decay in direction of the probe axis. During calibration the probe tip is completely surrounded by the simulating solution. If the probe is used in the immediate vicinity of a media boundary, the field in the probe is altered due to interaction with the field in the boundary and the probe sensitivity changes. The influence of the boundary effect depends on the probe construction, the media parameters and the probe orientation with respect to the boundary. It disappears at a distance of 1mm (EID-probe) to 5mm (ET3D-probes) between the probe tip and the boundary. The boundary effect must be considered in the extrapolation to the surface.

EXHIBIT 6. MEASUREMENTS, EXAMINATIONS & TEST DATA

TEST CONFIGURATIONS

D.U.T. Information		Condition											
Product Name	Wireless Microphone Audio Transmitter	Robot Type	6 Axis										
Model Number	QT-300A	Scan Type	SAR – Area/Zoom/Att. Vs Depth										
Serial Number	BeltMic(30054) PlayerMic(30052) AquaMic(30055) Incognito(30053)	Measured Field	E										
Frequency Band [MHz]	Low 470.25-545MHz	Phantom Type	2mm base Flat Phantom										
Frequency Tested [MHz]	470,489,508,526,545	Phantom Position	Waist										
Maximum Conducted Power	<table border="1"> <thead> <tr> <th>Device Model</th> <th>Max RF Power (470.25-545MHz)</th> </tr> </thead> <tbody> <tr> <td>BeltMic(Body Mounted Only)</td> <td>250mW</td> </tr> <tr> <td>PlayerMic(Body Mounted Only)</td> <td>100mW</td> </tr> <tr> <td>AquaMic(Body Mounted Only)</td> <td>250mW</td> </tr> <tr> <td>Incognito(Head and Body Mounted)</td> <td>100mW</td> </tr> </tbody> </table>	Device Model	Max RF Power (470.25-545MHz)	BeltMic(Body Mounted Only)	250mW	PlayerMic(Body Mounted Only)	100mW	AquaMic(Body Mounted Only)	250mW	Incognito(Head and Body Mounted)	100mW	Room Temperature [°C]	22.0 ± 1
Device Model	Max RF Power (470.25-545MHz)												
BeltMic(Body Mounted Only)	250mW												
PlayerMic(Body Mounted Only)	100mW												
AquaMic(Body Mounted Only)	250mW												
Incognito(Head and Body Mounted)	100mW												
Antenna Type	Integral (1/4 Wave Wire Antenna soldered to the PCB)	Room Humidity [%]	35 ± 10										
Modulation	FM	Tissue Temperature [°C]	21.8 ± 1										
Worst Case Duty Cycle	100 %												
Duty Cycle Tested	100%												
Source(or Usage)-Based Time-Average Factor	1.0												

Type of Tissue	Brain	Muscle
Test Frequency [MHz]	450	450
Target Conductivity [S/m]	0.87	0.94
Measured Conductivity [S/m]	0.84(-3.6%)	0.91 (-3.1%)
Target Dielectric Constant	43.5	56.7
Measured Dielectric Constant	45.0(+3.4%)	57.8 (+2.0%)
Penetration Depth (Plane Wave Excitation) [mm]	45.0	46.3
Probe Model Number	EX3DV4	EX3DV4
Probe Serial Number	3673	3673
Probe Orientation	Isotropic	Isotropic
Probe Sensor Offset [mm]	1	1
Probe Tip Diameter [mm]	2.5	2.5
Conversion Factor (γ)	10.43 (±13.3%)	10.51 (±13.3%)

GENERAL TEST SETUP

Equipment Configuration

Power and signal distribution, grounding, interconnecting cabling and physical placement of equipment of a test system shall simulate the typical application and usage in so far as is practicable, and shall be in accordance with the relevant product specifications of the manufacturer.

The configuration that tends to maximize the D.U.T's emission or minimize its immunity is not usually intuitively obvious and in most instances selection will involve some trial and error testing. For example, interface cables may be moved or equipment re-orientated during initial stages of testing and the effects on the results observed.

Only configurations within the range of positions likely to occur in normal use need to be considered.

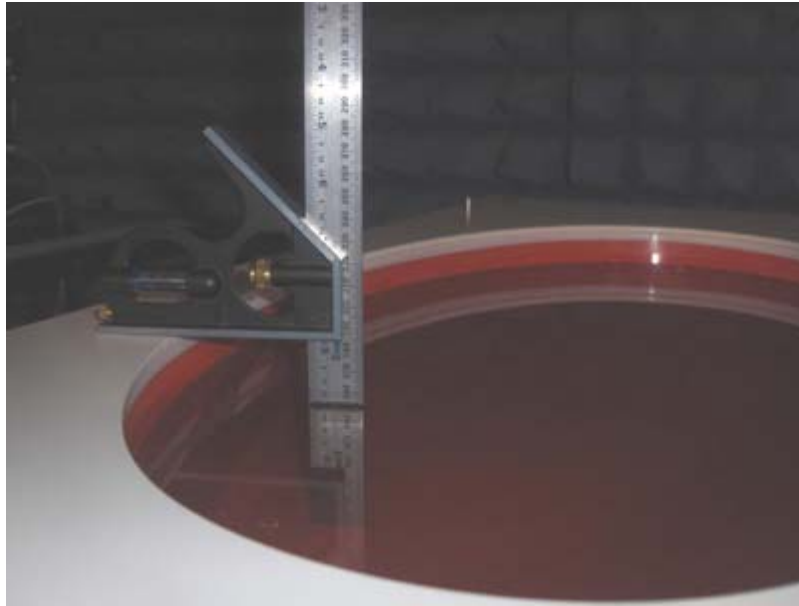
The configuration selected shall be fully detailed and documented in the test report, together with the justification for selecting that particular configuration.

Exercising Equipment

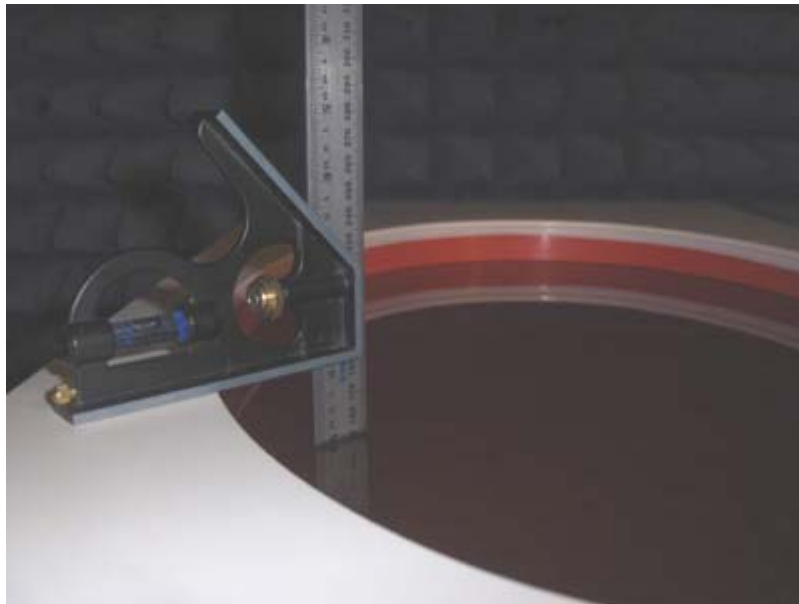
The exercising equipment and other auxiliary equipment shall be sufficiently decoupled from the D.U.T. so that the performance of such equipment does not significantly influence the test results.

Photographs of Tissue Depth and EUT for body configuration

450MHz Tissue Liquid

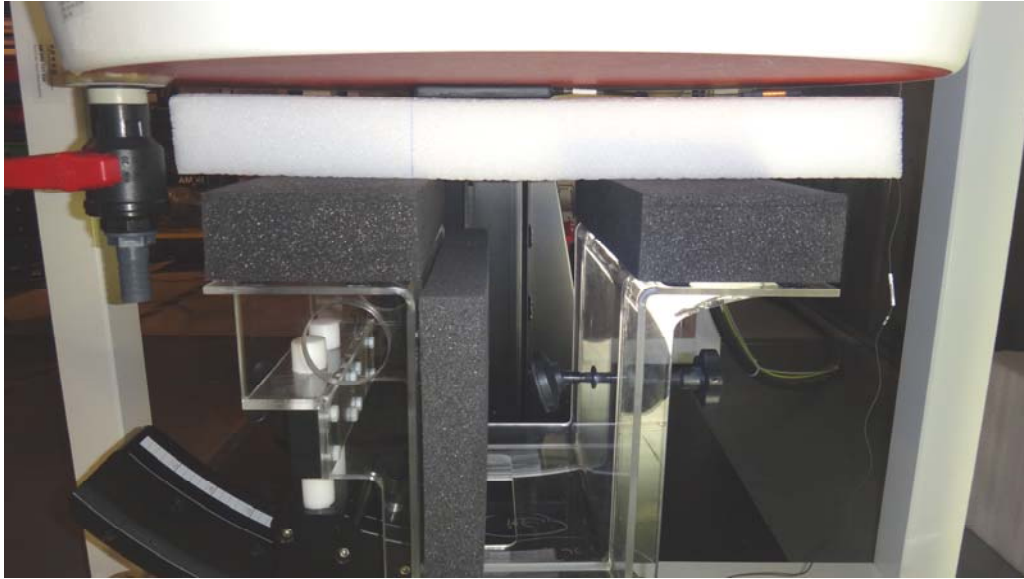


< Phantom filled with head tissue: liquid level = 150mm \pm 5mm >



< Phantom filled with body tissue liquid: liquid level = 150mm \pm 5mm >

PHOTOGRAPHS OF D.U.T. POSITION



< PlayerMic Front >



< PlayerMic Back >



< PlayerMic >



< BeltMic >

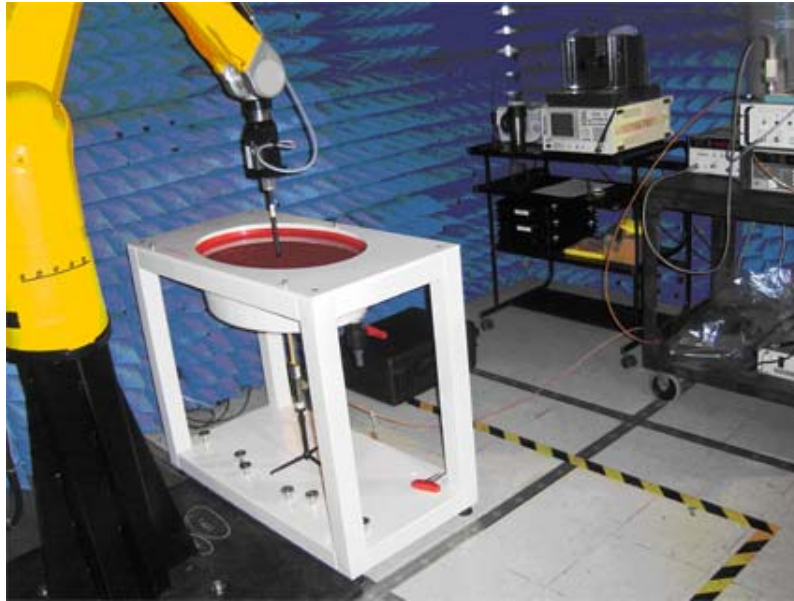


< AquaMic >



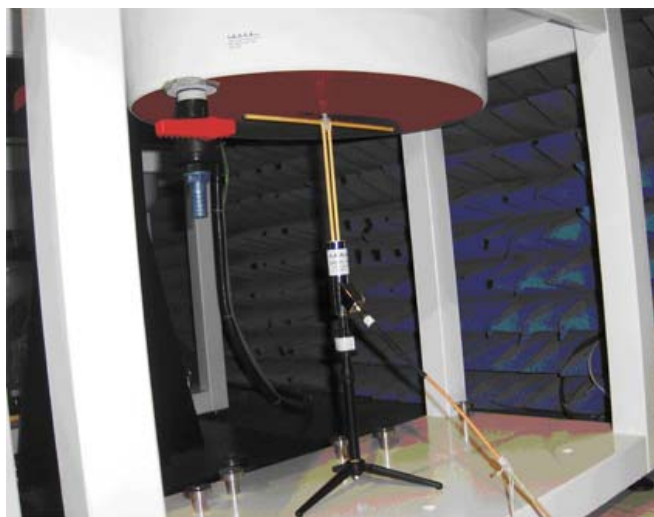
< Incognito >

EXHIBIT 7. SAR MEASUREMENT SYSTEM VERIFICATION



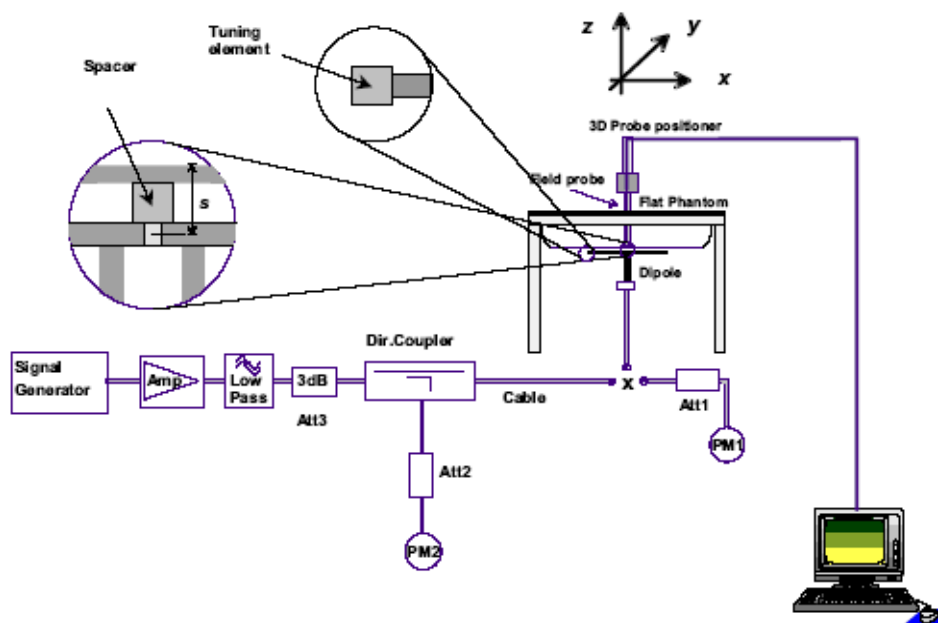
Standard Source

A half-wave dipole is positioned below the bottom of the phantom and centered with its axis parallel to the longest side of the phantom. The distance between the liquid filled phantom bottom surface and the center of the dipole axis, s , is chosen as specified IEEE 1528 at the specific test frequency (i.e. 15 mm at 835 MHz). A low loss and low dielectric constant spacer is used to establish the correct distance between the top surface of the dipole and the bottom surface of the phantom.



Standard Source Input Power Measurement

The system validation is performed as shown below or in Figure 7.1 in IEEE 1528.



First the power meter PM1 (including attenuator Att1) is connected to the cable to measure the forward power at the location of the dipole connector (X). The signal generator is adjusted for the desired forward power at the dipole connector (taking into account the attenuation of Att1) as read by power meter PM2. After connecting the cable to the dipole, the signal generator is readjusted for the same reading at power meter PM2. If the signal generator does not allow adjustment in 0.01dB steps, the remaining difference at PM2 must be taken into consideration. PM3 records the reflected power from the dipole to ensure that the value is not changed from the previous value. The reflected power was verified to be at least 20dB below the forward power.

System Validation Procedure

A complete 1g-averaged SAR measurement is performed. The measured 1g-averaged SAR value is normalized to a forward power of 1W to a half-wave dipole and compared with the reference SAR value for the reference dipole and flat phantom shown in columns 2 and 3 of Table 7.1 in IEEE 1528.

Verification Results

*Dipole D450 – SN: 1063 Reference SAR values**

	Frequency (MHz)	SAR1g			SAR10g		
		Reference (W/kg)	Measured (W/kg)	Delta %	Reference (W/kg)	Measured (W/kg)	Delta %
Head	450	4.50	4.24	-5.78	3.01	2.86	-5.12
Body	450	4.60	4.52	-1.74	3.04	3.06	0.53

* SAR values are normalized to a forward power of 1 W.

Verification at 450 MHz Head

Test Laboratory: Ultratech Group of Labs

File Name: [Sys.Ver.Check-D450MHz_Head.da52:0](#)

DUT: Dipole 450 MHz D450V3; Type: D450V3; Serial: D450V3 - SN: 1063

Communication System: UID 0, CW (0); Frequency: 450 MHz; Duty Cycle: 1:1
Medium parameters used: $f = 450$ MHz; $\sigma = 0.838$ S/m; $\epsilon_r = 44.985$; $\rho = 1000$ kg/m³; Phantom section:
Flat Section; Measurement Standard: DASY5 (IEEE/IEC/ANSI C63.19-2007)

DASY Configuration:

- Probe: EX3DV4 - SN3673; ConvF(10.43, 10.43, 10.43); Calibrated: 3/20/2017;
- Sensor-Surface: 3mm (Mechanical Surface Detection)
- Electronics: DAE4 Sn874; Calibrated: 8/21/2017
- Phantom: ELI 4.0; Type: QD OVA 001 BB; Serial: 1057
- DASY52 52.10.0(1446); SEMCAD X 14.6.10(7417)

System Verification Configuration for 450MHz_Head/d=15mm, Pin=250mW, dist=2mm (EX-Probe)/Area Scan (61x81x1): Interpolated grid: dx=1.500 mm, dy=1.500 mm

Maximum value of SAR (interpolated) = 1.21 W/kg

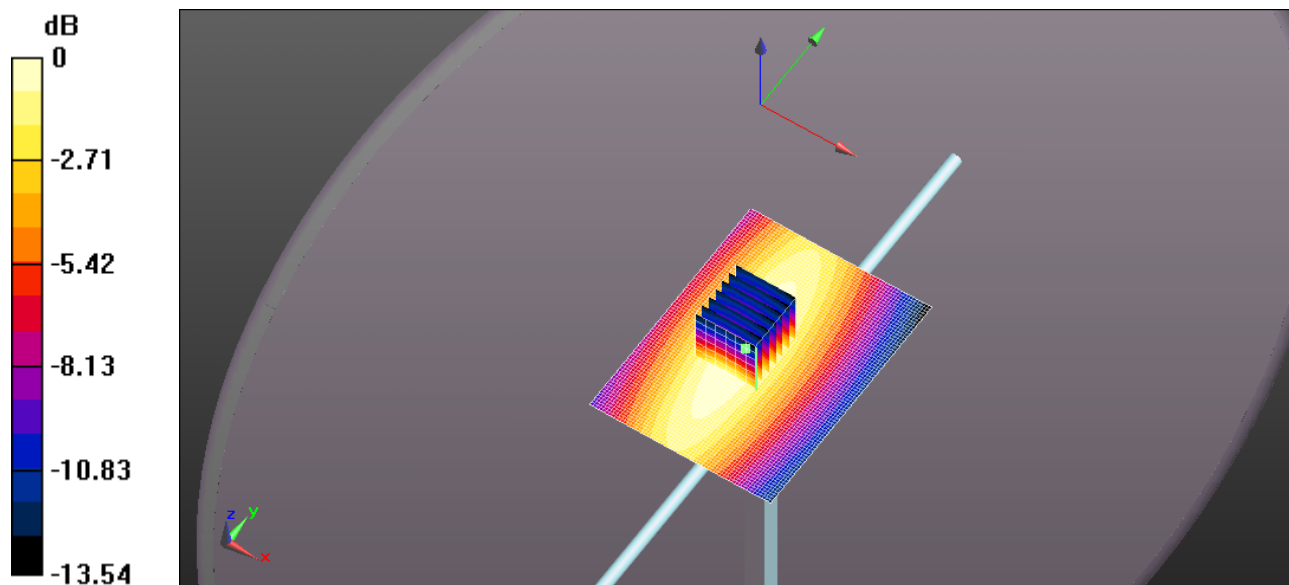
System Verification Configuration for 450MHz_Head/d=15mm, Pin=250mW, dist=2mm (EX-Probe)/Zoom Scan (7x7x7) (7x7x7)/Cube 0: Measurement grid: dx=5mm, dy=5mm, dz=5mm

Reference Value = 35.23 V/m; Power Drift = -0.18 dB

Peak SAR (extrapolated) = 1.52 W/kg

SAR(1 g) = 1.06 W/kg; SAR(10 g) = 0.714 W/kg (SAR corrected for target medium)

Maximum value of SAR (measured) = 1.19 W/kg



0 dB = 1.21 W/kg = 0.84 dBW/kg

Verification at 450 MHz Body

Test Laboratory: Ultratech Group of Labs

File Name: [Sys.Ver.Check-D450MHz_Body.da52:0](#)

DUT: Dipole 450 MHz D450V3; Type: D450V3; Serial: D450V3 - SN: 1063

Communication System: UID 0, CW (0); Frequency: 450 MHz; Duty Cycle: 1:1
Medium parameters used: $f = 450$ MHz; $\sigma = 0.911$ S/m; $\epsilon_r = 57.819$; $\rho = 1000$ kg/m³; Phantom section: Flat Section; Measurement Standard: DASYS5 (IEEE/IEC/ANSI C63.19-2007)

DASY Configuration:

- Probe: EX3DV4 - SN3673; ConvF(10.51, 10.51, 10.51); Calibrated: 3/20/2017;
- Sensor-Surface: 3mm (Mechanical Surface Detection)
- Electronics: DAE4 Sn874; Calibrated: 8/21/2017
- Phantom: ELI 4.0; Type: QD OVA 001 BB; Serial: 1057
- DASYS2 52.10.0(1446); SEMCAD X 14.6.10(7417)

System Verification Configuration for 450MHz_Body/d=15mm, Pin=250mW, dist=2mm (EX-Probe)/Area Scan (61x81x1): Interpolated grid: dx=1.500 mm, dy=1.500 mm
Maximum value of SAR (interpolated) = 1.27 W/kg

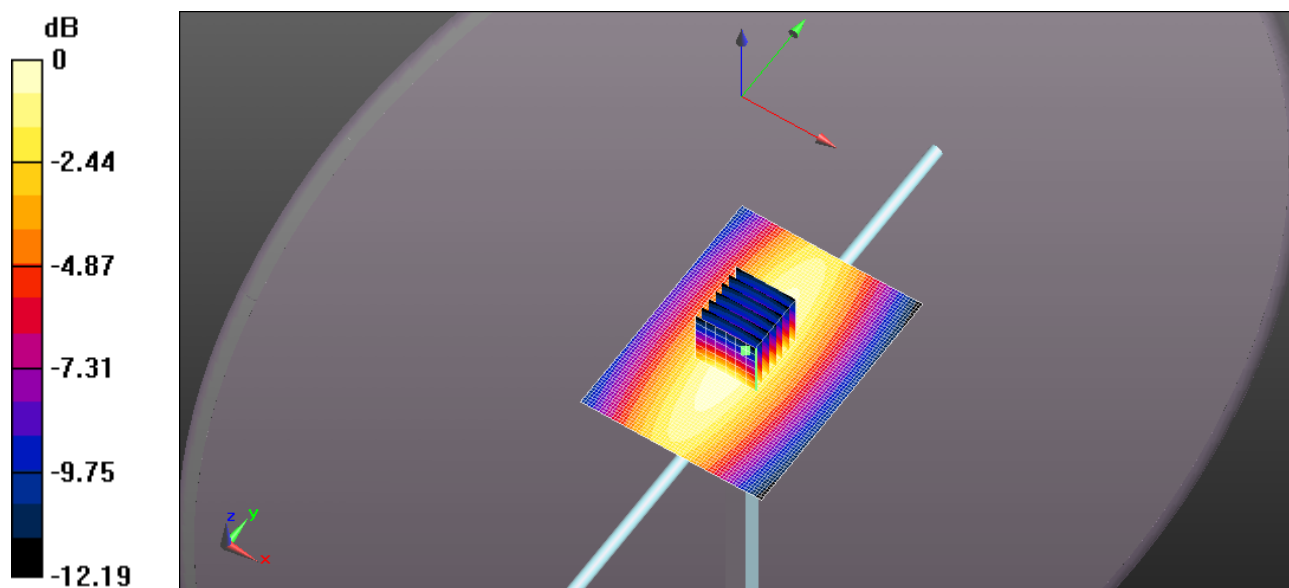
System Verification Configuration for 450MHz_Body/d=15mm, Pin=250mW, dist=2mm (EX-Probe)/Zoom Scan (7x7x7) (7x7x7)/Cube 0: Measurement grid: dx=5mm, dy=5mm, dz=5mm

Reference Value = 35.78 V/m; Power Drift = -0.02 dB

Peak SAR (extrapolated) = 1.64 W/kg

SAR(1 g) = 1.13 W/kg; SAR(10 g) = 0.764 W/kg (SAR corrected for target medium)

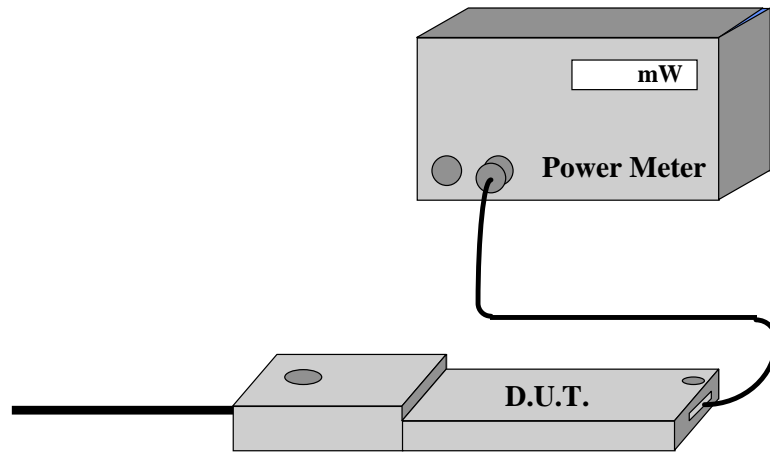
Maximum value of SAR (measured) = 1.28 W/kg



0 dB = 1.27 W/kg = 1.04 dBW/kg

EXHIBIT 8. D.U.T. POWER MEASUREMENT

Whenever possible, a conducted power measurement is performed. To accomplish this, we utilize a fully charged battery, a calibrated power meter and a cable adapter provided by the manufacturer. The data of the cable and related circuit losses are also provided by the manufacturer. The power measurement is then performed across the operational band and the channel with the highest output power is recorded.



Power measurement is performed before and after the SAR to verify if the battery was delivering full power at the time of testing. A difference in output power would determine a need for battery replacement and to repeat the SAR test.

RF Conducted output power measurement

Scaling Factors user to obtain Reported SAR data are derived from the maximum tune-up power divided by the measured average conducted power. The measured SAR is only scaled up to obtain the Reported SAR.

RF conducted output power measurement

Serial #:	Frequency (MHz):	TX Power (mW):	Measured Power (mW):	Measured Power (dBm):
30052	470	10	10.00	10.00
		25	24.94	13.97
		50	47.93	16.81
		100	98.33	19.93
		250	253.39	24.04
	Frequency (MHz):	TX Power (mW):	Measured Power (mW):	Measured Power (dBm):
	489	10	9.84	9.93
		25	25.04	13.99
		50	51.50	17.12
		100	100.68	20.03
		250	257.73	24.11
	Frequency (MHz):	TX Power (mW):	Measured Power (mW):	Measured Power (dBm):
	508	10	10.06	10.03
		25	24.21	13.84
		50	52.26	17.18
		100	100.72	20.03
		250	258.03	24.12
	Frequency (MHz):	TX Power (mW):	Measured Power (mW):	Measured Power (dBm):
	526	10	9.87	9.94
		25	24.05	13.81
		50	50.73	17.05
		100	99.27	19.97
		250	237.64	23.76
	Frequency (MHz):	TX Power (mW):	Measured Power (mW):	Measured Power (dBm):
	545	10	10.14	10.06
25		25.76	14.11	
50		50.50	17.03	
100		98.29	19.93	
250		206.63	23.15	

Serial #:	Frequency (MHz):	TX Power (mW):	Measured Power (mW):	Measured Power (dBm):
30053	470	10	10.05	10.02
		25	24.68	13.92
		50	50.35	17.02
		100	96.94	19.87
		250	216.98	23.36
	Frequency (MHz):	TX Power (mW):	Measured Power (mW):	Measured Power (dBm):
	489	10	10.04	10.02
		25	26.01	14.15
		50	49.97	16.99
		100	97.15	19.87
		250	251.48	24.01
	Frequency (MHz):	TX Power (mW):	Measured Power (mW):	Measured Power (dBm):
	508	10	9.97	9.99
		25	25.65	14.09
		50	51.19	17.09
		100	97.58	19.89
		250	241.36	23.83
	Frequency (MHz):	TX Power (mW):	Measured Power (mW):	Measured Power (dBm):
	526	10	10.20	10.09
		25	25.11	14.00
		50	49.07	16.91
		100	99.70	19.99
		250	216.86	23.36
	Frequency (MHz):	TX Power (mW):	Measured Power (mW):	Measured Power (dBm):
	545	10	10.24	10.10
25		26.09	14.16	
50		50.18	17.01	
100		101.00	20.04	
250		193.56	22.87	

Serial #:	Frequency (MHz):	TX Power (mW):	Measured Power (mW):	Measured Power (dBm):
30054	470	10	9.83	9.92
		25	23.98	13.80
		50	49.46	16.94
		100	103.90	20.17
		250	233.07	23.67
	Frequency (MHz):	TX Power (mW):	Measured Power (mW):	Measured Power (dBm):
	489	10	9.98	9.99
		25	24.86	13.96
		50	49.78	16.97
		100	99.17	19.96
		250	244.77	23.89
	Frequency (MHz):	TX Power (mW):	Measured Power (mW):	Measured Power (dBm):
	508	10	9.94	9.98
		25	25.16	14.01
		50	49.99	16.99
		100	98.62	19.94
		250	242.19	23.84
	Frequency (MHz):	TX Power (mW):	Measured Power (mW):	Measured Power (dBm):
	526	10	10.05	10.02
		25	24.78	13.94
		50	50.54	17.04
		100	98.38	19.93
		250	233.67	23.69
	Frequency (MHz):	TX Power (mW):	Measured Power (mW):	Measured Power (dBm):
	545	10	9.96	9.98
25		25.28	14.03	
50		48.63	16.87	
100		101.05	20.05	
250		191.78	22.83	

Serial #:	Frequency (MHz):	TX Power (mW):	Measured Power (mW):	Measured Power (dBm):
30055	470	10	10.18	10.08
		25	24.72	13.93
		50	51.49	17.12
		100	103.24	20.14
		250	241.79	23.83
	Frequency (MHz):	TX Power (mW):	Measured Power (mW):	Measured Power (dBm):
	489	10	10.03	10.01
		25	23.91	13.79
		50	47.54	16.77
		100	102.43	20.10
		250	263.22	24.20
	Frequency (MHz):	TX Power (mW):	Measured Power (mW):	Measured Power (dBm):
	508	10	9.94	9.97
		25	25.24	14.02
		50	50.66	17.05
		100	98.25	19.92
		250	255.39	24.07
	Frequency (MHz):	TX Power (mW):	Measured Power (mW):	Measured Power (dBm):
	526	10	9.89	9.95
		25	25.01	13.98
		50	49.61	16.96
		100	101.03	20.04
		250	235.41	23.72
	Frequency (MHz):	TX Power (mW):	Measured Power (mW):	Measured Power (dBm):
	545	10	10.04	10.02
25		24.89	13.96	
50		50.10	17.00	
100		98.85	19.95	
250		204.85	23.11	

EXHIBIT 9. TISSUE DIELECTRIC PARAMETER CALIBRATION

Simulated tissue

Simulated Tissue: Suggested in a paper by George Hartsgrove and colleagues in University of Ottawa Ref.: Bioelectromagnetics 8:29-36 (1987)

Ingredient	Quantity
Water	40.4 %
Sugar	56.0 %
Salt	2.5 %
HEC	1.0 %
Bactericide	0.1 %

Table 0 Example of composition of simulated tissue

This simulated tissue is mainly composed of water, sugar and salt. At higher frequencies, in order to achieve the proper conductivity, the solution does not contain salt. Also, at these frequencies, D.I. water and alcohol is preferred.

Target Frequency (MHz)	Head		Body	
	ϵ_r	σ (S/m)	ϵ_r	σ (S/m)
150	52.3	0.76	61.9	0.80
300	45.3	0.87	58.2	0.92
450	43.5	0.87	56.7	0.94
600	42.7	0.88	56.1	0.95
835	41.5	0.90	55.2	0.97
900	41.5	0.97	55.0	1.05
915	41.5	0.98	55.0	1.06
1450	40.5	1.20	54.0	1.30
1610	40.3	1.29	53.8	1.40
950 – 2000	40.0	1.40	53.3	1.52
2450	39.2	1.80	52.7	1.95
3000	38.5	2.40	52.0	2.73
5800	35.3	5.27	48.2	6.00

(ϵ_r = relative permittivity, σ = conductivity and $\rho = 1000 \text{ Kg/m}^3$ *)

* The actual mass density of the equivalent tissue varies based on the composition of the tissue from 990 Kg/m^3 to $1,300 \text{ Kg/m}^3$.

Measurement of Electrical Characteristics of Simulated Tissue

HP Dielectric Strength Probe System (open-ended coaxial transmission-line probe/sensor) was used.

Equipment set-up

The equipment consists of a probe connected to one port of a vector network analyzer. The probe is an open-ended coaxial line, as shown in Figure 9.2.1.1. Cylindrical coordinates (ρ , ϕ , z) are used where ρ is the radial distance from the axis, ϕ is the angular displacement around the axis, z is the displacement along the axis, a is the inner conductor radius, and b is the outer conductor inner radius.

The sample holder is a non-metallic container that is large compared with the size of the probe immersed in it. A probe with an outer diameter b of 2 to 4 mm is suitable for the measurement of tissue-equivalent materials in the 300 MHz to 3 GHz frequency range. This probe size is commensurate with sample volumes of 50 cc or higher. Larger probes of up to 7 mm outer diameter b may be used with larger sample volumes. A flange is typically included to better represent the infinite ground-plane assumption used in admittance calculations.

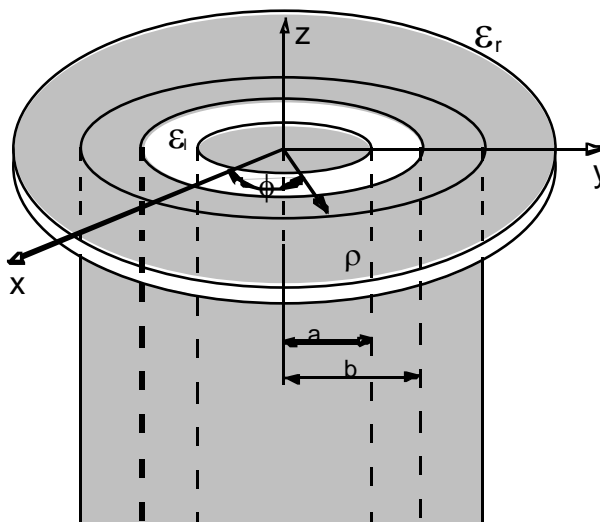


Figure 0. An open-ended coaxial probe with inner and outer radii a and b , respectively

The accuracy of the short-circuit measurement should be verified for each calibration at a number of frequencies. A short circuit can be achieved by gently pressing a piece of aluminum foil against the open end. For best electrical contact, the probe end should be flat and free of oxidation. Larger the sensors generally have better foil short-circuit repeatability. It is possible to obtain good contact with some commercial 4.6 mm probes using the metal-disk short-circuit supplied with the kit. For best repeatability, it may be necessary to press the disk by hand.

The network analyzer is configured to measure the magnitude and phase of the admittance. A one-port reflection calibration is performed at the plane of the probe by placing materials for which the reflection coefficient can be calculated in contact with the probe. Three standards are needed for the calibration, typically a short circuit, air, and de-ionized water at a well-defined temperature (other reference liquids such as methanol or ethanol may be used for calibration). The calibration is a key part of the measurement procedure, and it is therefore important to ensure that it has been performed correctly. It can be checked by re-measuring the short circuit to ensure that a reflection coefficient of $\Gamma = -1.0$ (linear units) is obtained consistently.

Measurement procedure

- a) Configure and calibrate the network analyzer and probe system.

- b) Place the sample in a non-metallic container and immerse the probe. A fixture or clamp is recommended to stabilize the probe, mounted such that the probe face is at an angle with respect to the liquid surface to minimize trapped air bubbles beneath the flange.
- c) Measure the complex admittance with respect to the probe aperture.
- d) Compute the complex relative permittivity $\epsilon_r = \epsilon_r' - j\sigma/\omega\epsilon_0$.

Simulated Tissue measurement Results

Tissue calibration type	HP Dielectric Strength Probe System (M/N: 85070C)	
Tissue calibration date [MM/DD/YYYY]	Dec28, 2017	Nov 07, 2017
Tissue calibrated by	Nimisha	Nimisha
Room temperature [°C]	22.7	22.7
Room humidity [%]	32	25
Simulated tissue temperature (°C)	22.4	22.4
Tissue calibration frequency [MHz]	450	450
Tissue Type	Head	Body
Target conductivity [S/m]	0.87	0.94
Target dielectric constant	43.5	56.7
Composition (by weight) [%]	DI Water (38.56%) Sugar (56.32%) Salt (3.95 %) HEC (0.98%) Bactericide (0.19%)	DI Water (40.8 %) Sugar (54.17 %) Salt (1.83 %) HEC (0.19 %) Bactericide (0.3%)
Measured conductivity [S/m]	0.84(-3.6%)	0.91(-3.1%)
Measured dielectric constant	45.0(3.47%)	57.8(2.0%)
Penetration depth (plane wave excitation) [mm]	45.0	46.3

450 MHz Tissue

	Frequency [MHz]	Meas. after 5min			DI Water at 20°C			Init. Meas.		
		ϵ'	ϵ''	σ [S/m]	ϵ'	ϵ''	σ [S/m]	ϵ'	ϵ''	σ [S/m]
Head	415.000	45.3913	35.0802	0.81	80.0072	1.8458	0.04	46.4389	35.2036	0.81
	450.000	44.9853	33.4933	0.84	79.2896	1.7547	0.04	45.6155	33.9718	0.85
	485.000	44.6581	32.3362	0.87	79.4383	1.7188	0.05	44.9879	32.9272	0.89
Body	415.000	58.2624	38.2962	0.88	80.0246	1.8409	0.04	58.1648	38.1092	0.88
	450.000	57.8191	36.3821	0.91	80.0240	2.0721	0.05	57.7654	36.3072	0.91
	485.000	57.2676	34.8649	0.94	79.9832	2.2271	0.06	57.1801	34.5087	0.93

EXHIBIT 10. SAR MEASUREMENT UNCERTAINTY

Measurement Uncertainty evaluation for SAR test

Error Description	Uncertainty value	Prob. Dist.	Div.	(c _i) 1g	(c _i) 10g	Std. Unc. (1g)	Std. Unc. (10g)	(v _i) v _{eff}
Measurement System								
Probe Calibration	±5.5 %	N	1	1	1	±5.5 %	±5.5 %	∞
Axial Isotropy	±4.7 %	R	$\sqrt{3}$	0.7	0.7	±1.9 %	±1.9 %	∞
Hemispherical Isotropy	±9.6 %	R	$\sqrt{3}$	0.7	0.7	±3.9 %	±3.9 %	∞
Boundary Effects	±1.0 %	R	$\sqrt{3}$	1	1	±0.6 %	±0.6 %	∞
Linearity	±4.7 %	R	$\sqrt{3}$	1	1	±2.7 %	±2.7 %	∞
System Detection Limits	±1.0 %	R	$\sqrt{3}$	1	1	±0.6 %	±0.6 %	∞
Readout Electronics	±0.3 %	R	$\sqrt{3}$	1	1	±0.3 %	±0.3 %	∞
Response Time	±0.8 %	N	1	1	1	±0.5 %	±0.5 %	∞
Integration Time	±2.6 %	R	$\sqrt{3}$	1	1	±1.5 %	±1.5 %	∞
RF Ambient Noise	±3.0 %	R	$\sqrt{3}$	1	1	±1.7 %	±1.7 %	∞
RF Ambient Reflections	±3.0 %	R	$\sqrt{3}$	1	1	±1.7 %	±1.7 %	∞
Probe Positioner	±0.4 %	R	$\sqrt{3}$	1	1	±0.2 %	±0.2 %	∞
Probe Positioning	±2.9 %	R	$\sqrt{3}$	1	1	±1.7 %	±1.7 %	∞
Max. SAR Eval.	±1.0 %	R	$\sqrt{3}$	1	1	±0.6 %	±0.6 %	∞
Test Sample Related								
Device Positioning	±2.9 %	N	1	1	1	±2.9 %	±2.9 %	145
Device Holder	±3.6 %	N	1	1	1	±3.6 %	±3.6 %	5
Power Drift	±5.0 %	R	$\sqrt{3}$	1	1	±2.9 %	±2.9 %	∞
Phantom and Setup								
Phantom Uncertainty	±4.0 %	R	$\sqrt{3}$	1	1	±2.3 %	±2.3 %	∞
Liquid Conductivity (target)	±5.0 %	R	$\sqrt{3}$	0.64	0.43	±1.8 %	±1.2 %	∞
Liquid Conductivity (meas.)	±2.5 %	N	1	0.64	0.43	±1.6 %	±1.1 %	∞
Liquid Permittivity (target)	±5.0 %	R	$\sqrt{3}$	0.6	0.49	±1.7 %	±1.4 %	∞
Liquid Permittivity (meas.)	±2.5 %	N	1	0.6	0.49	±1.5 %	±1.2 %	∞
Combined Std. Uncertainty						±10.7 %	±10.5 %	387
Expanded STD Uncertainty						±21.4 %	±21.0 %	

EXHIBIT 11. ADDITIONAL TEST INSTRUMENTS LIST

Name	Type	Serial Number (SN)	Calibration Date (or Due Date)
Signal Generator (300KHz-6.4GHz)	Rohde & Schwarz SMIQ06L	10059	Due Date: 24 Jul 2019
SPEAG Validation Antenna (450MHz)	D450V3	1063	Due Date: August 29, 2019
SPEAG Validation Antenna (600MHz)	D600V3	1009	Due Date: Dec 01, 2018
SPEAG SAR Probe	EX3DV4	3673	Due Date: March 20, 2018
SPEAG DAE	DAE4 – SD 000 Do4 BJ	874	Due Date: August 21, 2018
Power Meter (HP)	HP 436A	2709A27515/2016A07747	Due Date: May 08,2018
Power Sensor 100KHz-4.2GHz	HP 8482A	MY44175182	Due Date: 26 Oct, 2019
Power Sensor 100KHz-4.2GHz	HP 8482H	3318A06181	Due Date: 26 Oct, 2019
Directional Coupler (narda)	Model 3020A	35482	Cal on use
Network Analyzer (HP)	8753D	3410J02042	Due Date: Oct 10, 2018
Wideband RF Amplifier(400-1000MHz)	KALMUS Engineering 720FC	--	N/A

EXHIBIT 12. SAR MEASUREMENT DATA

See Appendix 1.

EXHIBIT 13. SAR CALIBRATION CERTIFICATE

See Appendix 2.