



T60/T65 PoC Smart Radio Quick Guide

Please read carefully the Safety Information before using the product.

Appearance



T65

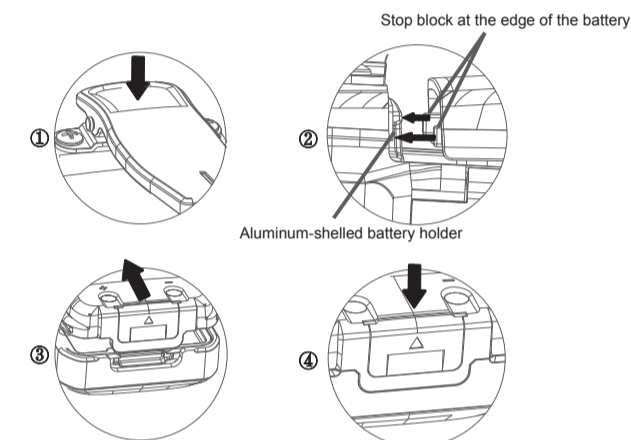


Attachments

NO.	Name
1	Host
2	Battery
3	Antenna
4	Data cable
5	Power adapter
6	User manual
7	Safety information and warranty card
8	Strap
9	Desktop charger (optional)

Installing the Battery

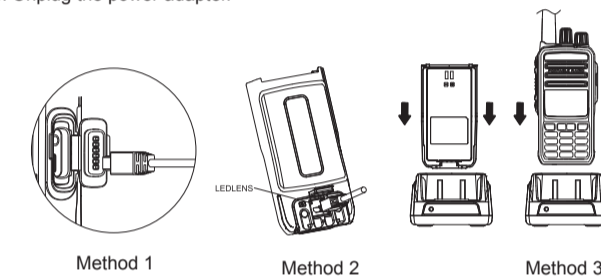
- Press the upper part of the belt clip gently so that it goes up. (Figure ①)
- Align the battery with the battery holder at the back of the radio, and then insert the battery. (Figure ②)
- Push the battery in the direction indicated until the latch is in position. (Figure ③)
- Press the upper part of the battery until it is latched. (Figure ④)



Charging the Battery

You can charge the battery using one of the following methods.

- Charging via USB Port on Right Side
 - Open the cover of external interfaces on the right side of the radio to find the USB port.
 - Connect the port using the programming/charging cable to charge the radio.
- Charging via USB port on Bottom Side
 - Uninstall the battery.
 - Connect the radio to the USB port at the bottom of the radio using the data/charging cable to charge the radio. Green LED indicator light will be on beside the port.
- Charging via Desktop Charger (Optional)
 - Place the desktop charger on a horizontal surface, and keep off flammables.
 - Plug the power adapter of the charger into an AC power socket, anconnect the power adapter cable to the jack at the back of the charger. Green LED indicator light will be on.
 - Put the radio (with the battery installed) into the charger to start charging. Red LED indicator light will be on. Ensure good contact between the battery and the charging terminals.
 - After charging for about 6 hours, red light will be off and green light on. Now the battery is fully charged. For optimized battery performance, continue charging for 1 to 2 hours, and then take out the radio.
 - Unplug the power adapter.



Note:
1. The radio is delivered uncharged. Before using the radio for the first time, please charge the battery.



Fujian Kirisun Communications Co., Ltd.

版本: V1.0



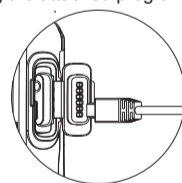
167W06001XX

- For a new battery or a battery that has been stored for more than 2 months, it is necessary to charge it for several times to achieve normal battery capacity. Please charge the battery every three months at least.
- To maintain service life and performance of the battery, do not charge a battery that has been fully charged or before a warning of low voltage is shown on the radio. After charging, take the battery out of the charger.
- When you see a warning of low voltage, please charge the battery before using it again. To maintain the service life and performance of the battery, do not power on the radio intentionally.

Connecting Accessories

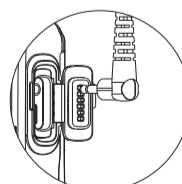
1. Connecting Programming/Charging Cable

Open the cover of external interfaces on the right side of the radio, find the USB port, connect the port to a PC using the programming/charging cable, and write/read parameters using the attached programming software.



2. Connecting an Earphone (Optional)

To use an earphone, open the earphone cover at the upper part of the right side of the radio, and then plug the earphone connector into the jack.



Programming Keys

To cater to users' habits, programmable keys (i.e. two side keys and one top key) are provided, which can be set as shortcut keys through programming by your dealer.

To program a key, connect the programming/charging cable to the USB port of the radio, and then program using the attached programming software. The following functions can be achieved through programming keys.

SN	Function	Usage
1	Undefined	No response for key pressing
2	Broadcast remaining battery capacity	Voice broadcast of remaining battery capacity
3	Broadcast user name	Voice broadcast of the user name of the radio
4	Broadcast group name	Voice broadcast of the name of the group the radio is in
5	Voice playback	Play 5 previous voice records
6	Contact list	Display/broadcast contact information
7	Emergency Alarm	Send an emergency alarm

LED Indicator

LED Indicator State	Device State
Red light on	•No SIM card is installed, or it is installed improperly (with voice prompt "No SIM card is installed"). •Fail to unlock the PIN code of the SIM card.
Green light on	•During a call (i.e. individual/group/all call).
Red light flashes fast	•Network registration fails because of an inactivated SIM card or overdue charge. •Device registration fails because of poor wireless network connection.
Green light flashes slow	•Network registration is successful, and the device enters standby state.
Yellow light on	•The device is in individual-call standby state. •The device is not configured on the server (with voice prompt "Not configured"). •The device is expired. •The device is in standby state or call setup state under duplex talk.
Yellow light flashes fast	•The device is powered on.
No indication	•The device is powered off.

Icons (T60 only)

Icon	Description
	Received signal strength
	2G/3G/4G transmission
	Wi-Fi signal strength
	Searching GPS satellite signals
	GPS signals acquired
	In group call
	In individual call
	In all call
	Unread emergency alarm message
	Bluetooth enabled, searching for Bluetooth device
	Connected to Bluetooth device
	Remaining battery capacity
	Unread short message
	Stunned
	Killed

Basic Operation

1. Powering On/Off

To power on the radio, rotate the Power/Volume knob clockwise until you a click. To power off the radio, rotate the Power/Volume knob counterclockwise until you a click.

2. Adjusting the Volume

When the radio is on, turn the Power/Volume knob clockwise to turn up the volume, or counterclockwise to turn it down.

3. Individual Call

(1) Initiating an Individual Call

- In the standby interface, press the Menu/OK key, select Contact, and choose a contact.
- Press the Menu/OK key, select Initiate Individual Call. You will hear a voice prompt "Enter individual-call mode".
- Press the PTT key.

(2) Ending an Individual Call

An individual call can be ended in either of the following ways. During an individual call, press the Menu/OK key, select Contact, and select End Individual Call. After entering individual-call mode, if you do not press the PTT key within 30 seconds, the radio will quit this mode, and you will hear a voice prompt "Individual call timed out".

4. Group Call

(1) Initiating a Group Call

Under individual/group/broadcast call mode, you can call the members of a group by pressing the PTT key. If there is no member online, you will hear a voice prompt "No member online", and transmission will be terminated.

Note: A group is set through the network management system.

(2) Selecting a Group

You can select a group in either of the following ways. After the radio registers successfully and enters standby state, rotate the Channel * knob to select a group. In the standby interface, press the Menu/OK key to enter the Menu interface, * press navigation keys to select Group List and then a group, and then press the Menu/OK key. (T60 only)

5. All Call

After defining an all-call key shortcut using the CPS, press the key to enter all-call mode. Hold down the PTT key to initiate an all call. The callee must reply within 3 seconds after receiving the call, otherwise the radio will quit all-call mode. An all call overrides an undergoing group call or individual call.

6. Broadcast Call

After defining a broadcast-call key shortcut using the CPS, press the key to enter broadcast-call mode. Hold down the PTT key to initiate a broadcast call. The callee can receive but not reply to the call. A broadcast call overrides an undergoing group call or individual call.

7. Receiving a Call

By switching to a group set through the NMS, the radio can receive an individual call, a group call or an all call from the group and output voice.

8. Late Entry

This function enables the radio to join an undergoing group call after a delay.

9. Priority Call

Different call priority can be set on the radio. A radio with a higher call priority initiates a call prior to a radio with a lower call priority.

Note:

The default call time of all types of calls is 60 seconds, which is modifiable through the NMS. A call is terminated automatically after this time is up, so as to release the floor.

10. Playback

After voice recording and playback are enabled on the NMS, you can download and play back the latest five voice records by pressing a pre-programmed playback key.

11. Low-Power Alert

When the remaining battery of the radio is below 10%, you will hear the voice alert "Low power." at a certain interval. Please replace or charge the battery after powering off the radio.

12. Positioning

To enable or disable GPS positioning, in the standby interface press the Menu/OK key, select Setting, select GPS, and turn it on/off. (T60 only. To a T65, perform this via the CPS.)

The GPS module inside the radio locates the radio and reports position information to the NMS. The real-time location and movement track of the radio can be displayed on a GIS map on the NMS or a dispatcher.

13. Wi-Fi

To enable or disable Wi-Fi, in the standby interface, press the Menu/OK key, select Setting, select Wi-Fi, and turn it on/off. (T60 only. To a T65, perform this via the CPS.)

By enabling Wi-Fi, you can search Wi-Fi networks nearby in real time. The radio can only be connected to a Wi-Fi hotspot, which should be preset through the CPS.

14. Bluetooth

To enable or disable Wi-Fi, in the standby interface, press the Menu/OK key, select Setting, select Bluetooth, and turn it on/off. (T60 only. To a T65, perform this via the CPS.) After enabling Bluetooth, you can connect the radio to a Bluetooth earphone by scan.

15. Short Message

To view received short messages, in the standby interface, press the Menu/OK key, select Message, select Short Message, and then Inbox.

16. Mobile Networks

GSM, WCDMA, CDMA, TD-SCDMA, TDD-LTE and FDD-LTE networks are supported.

17. Advanced Functions

You can revive, stun, kill the device, enable monitoring, or play back voice through the dispatcher.

18. Emergency Alarm

To send/exit an emergency alarm, hold down the top key. (Please have the key programmed beforehand using the CPS.) There are two alarm modes as below, which can be set by going to "Menu/OK" "Settings" "Alarm Modes". (Note: T60 only. To a T65, perform this via the CPS.)

- Silent Alarm: Under this mode, the radio sends an emergency alarm silently, and receive an alarm with voice prompt "SOS alarm from """.
 - Alarm and call: If silent alarm is disabled, the radio sends an emergency alarm and rings a siren, and receive an alarm and rings a siren with voice prompt "SOS alarm from """.
- To view sent alarms and received alarms, go to "Menu/OK" "Message" "SOS Message".

Troubleshooting

NO.	Problem	Reason and Solution
1	Power-on Failed	A. The battery is used up Solution: Charge the battery or replace it with a new one. B. Volume switch is faulty Solution: Get it repaired at the specified service station.
2	Volume Too Low	A. Speak too far from the microphone. Solution: Keep a distance of 3~10cm. B. Wrong volume setting Solution: Turn up the volume
3	PTT Failed	A. The SIM card is expired. Solution: Refill or replace it. B. Incorrect group setting. Solution: Choose a correct group and try again. C. The device is expired. Solution: Renew it.

FCC Statement

15.19 Labeling requirements.

This device complies with part 15 of the FCC Rules. Operation is subject to the following two conditions: (1) This device may not cause harmful interference, and (2) this device must accept any interference received, including interference that may cause undesired operation.

15.21 Information to user.

Any Changes or modifications not expressly approved by the party responsible for compliance could void the user's authority to operate the equipment.

15.105 Information to user.

This equipment has been tested and found to comply with the limits for a Class B digital device, pursuant to Part 15 of the FCC Rules. These limits are designed to provide reasonable protection against harmful interference in a residential installation. This equipment generates uses and can radiate radio frequency energy and, if not installed and used in accordance with the instructions, may cause harmful interference to radio communications. However, there is no guarantee that interference will not occur in a particular installation. If this equipment does cause harmful interference to radio or television reception, which can be determined by turning the equipment off and on, the user is encouraged to try to correct the interference by one or more of the following measures:

-- Reorient or relocate the receiving antenna.

-- Increase the separation between the equipment and receiver.

-- Connect the equipment into an outlet on a circuit different from that to which the receiver is connected.

-- Consult the dealer or an experienced radio/TV technician for help.

Specific Absorption Rate (SAR) information:

This product meets the government's requirements for exposure to radio waves. The guidelines are based on standards that were developed by independent scientific organizations through periodic and thorough evaluation of scientific studies. The standards include a substantial safety margin designed to assure the safety of all persons regardless of age or health.

FCC RF Exposure Information and Statement The SAR limit of USA (FCC) is 1.6 W/kg averaged over one gram of tissue. This device was tested for typical body-worn operations with the back of the device kept 10mm from the body without belt-clips, 0mm from the body with the belt-clips, 25mm from the face. To maintain compliance with FCC RF exposure requirements, use accessories that maintain a 10mm separation distance between the user's body and the back of the handset. The use of belt clips, holsters and similar accessories should not contain metallic components in its assembly. The use of accessories that do not satisfy these requirements may not comply with FCC RF exposure requirements, and should be avoided.

Body-worn Operation

This device was tested for typical body-worn operations. To comply with RF exposure requirements, a minimum separation distance of 10mm for body worn must be maintained between the user's body, including the antenna. Third-party belt-clips, holsters, and similar accessories used by this device should not contain any metallic components. Body-worn accessories that do not meet these requirements may not comply with RF exposure requirements and should be avoided. Use only the supplied or an approved antenna.

IC Statement

This device complies with Industry Canada's licence-exempt RSSs. Operation is subject to the following two conditions:

(1) This device may not cause interference; and

(2) This device must accept any interference, including interference that may cause undesired operation of the device.

Le présent appareil est conforme aux CNR d'Industrie Canada applicables aux appareils radio exempts de licence. L'exploitation est autorisée aux deux conditions suivantes: (1) l'appareil ne doit pas produire de brouillage, et (2) l'utilisateur de l'appareil doit accepter tout brouillage radioélectrique subi, même si le brouillage est susceptible d'en compromettre le fonctionnement.

The information listed above provides the user with information needed to make him or her aware of a RF exposure, and what to do to assure that this radio operates within the exposure limits.

This device was tested for typical body-worn operations with the back of the device kept 10mm from the body without belt-clips, 0mm from the body with the belt-clips, 25mm from the face. To maintain compliance with FCC RF exposure requirements, use accessories that maintain a 10mm separation distance between the user's body and the back of the handset. The use of belt clips, holsters and similar accessories should not contain metallic components in its assembly. The use of accessories that do not satisfy these requirements may not comply with FCC RF exposure requirements, and should be avoided.