




TEST REPORT

Report No. : **CHEW20050001** Report verification: 

Project No..... : **SHT2001035307EW**

FCC ID..... : **Q5EDSJ-K9**

Applicant's name..... : **Kirisun Communication Co.,Ltd.**

Address..... : 3rd Floor, Building A, Tongfang Information Harbour, No.11
Langshan Road, Nanshan District, Shenzhen 518057, P.R.China

Manufacturer..... : Kirisun Communication Co.,Ltd.

Address..... : 3rd Floor, Building A, Tongfang Information Harbour, No.11
Langshan Road, Nanshan District, Shenzhen 518057, P.R.China

Test item description : **Smart Device**

Trade Mark : KIRISUN

Model/Type reference..... : DSJ-K9

Listed Model(s) : -

Standard : **FCC 47 CFR Part2.1093
IEEE Std C95.1, 1999 Edition
IEEE 1528: 2013**

Date of receipt of test sample..... : Jan.19, 2020

Date of testing..... : Jan.20, 2020- May 06, 2020

Date of issue..... : May 07, 2020

Result..... : **PASS**

Compiled by (position+printedname+signature)....	File administrators: Fanghui Zhu	
Supervised by (position+printedname+signature)....	Test Engineer: Xiaodong Zhao	
Approved by (position+printedname+signature)....	Manager: Hans Hu	

Testing Laboratory Name : Shenzhen Huatongwei International Inspection Co., Ltd

Address..... : 1/F, Bldg 3, Hongfa Hi-tech Industrial Park, Genyu Road, Tianliao, Gongming, Shenzhen, China

Shenzhen Huatongwei International Inspection Co., Ltd. All rights reserved.

This publication may be reproduced in whole or in part for non-commercial purposes as long as the Shenzhen Huatongwei International Inspection Co., Ltd is acknowledged as copyright owner and source of the material. Shenzhen Huatongwei International Inspection Co., Ltd takes no responsibility for and will not assume liability for damages resulting from the reader's interpretation of the reproduced material due to its placement and context.

The test report merely correspond to the test sample.

Contents

<u>1.</u>	<u>Test Standards and Report version</u>	<u>3</u>
1.1.	Test Standards	3
1.2.	Report version	3
<u>2.</u>	<u>Summary</u>	<u>4</u>
2.1.	Client Information	4
2.2.	Product Description	4
<u>3.</u>	<u>Test Environment</u>	<u>6</u>
3.1.	Test laboratory	6
3.2.	Test Facility	6
3.3.	Environmental conditions	6
<u>4.</u>	<u>Equipments Used during the Test</u>	<u>7</u>
<u>5.</u>	<u>Measurement Uncertainty</u>	<u>8</u>
<u>6.</u>	<u>SAR Measurements System Configuration</u>	<u>9</u>
6.1.	SAR Measurement Set-up	9
6.2.	DASY5 E-field Probe System	10
6.3.	Phantoms	11
6.4.	Device Holder	11
<u>7.</u>	<u>SAR Test Procedure</u>	<u>12</u>
7.1.	Scanning Procedure	12
7.2.	Data Storage and Evaluation	14
<u>8.</u>	<u>Position of the wireless device in relation to the phantom</u>	<u>16</u>
8.1.	Front-of-face	16
8.2.	Body Position	16
<u>9.</u>	<u>Dielectric Property Measurements & System Check</u>	<u>17</u>
9.1.	Tissue Dielectric Parameters	17
9.2.	System Check	19
<u>10.</u>	<u>SAR Exposure Limits</u>	<u>27</u>
<u>11.</u>	<u>Conducted Power Measurement Results</u>	<u>28</u>
11.1.	GSM	28
11.2.	WCDMA	29
11.3.	LTE	32
11.4.	WiFi	49
11.5.	Bluetooth	49
<u>12.</u>	<u>Maximum Tune-up Limit</u>	<u>50</u>
<u>13.</u>	<u>Measured and Reported SAR Results</u>	<u>59</u>
13.1.	Head SAR	61
13.2.	Body SAR	64
<u>14.</u>	<u>Simultaneous Transmission analysis</u>	<u>70</u>
14.1.	Head	71
14.2.	Body	73
<u>15.</u>	<u>TestSetup Photos</u>	<u>77</u>
<u>16.</u>	<u>External and Internal Photos of the EUT</u>	<u>77</u>

1 . Test Standards and Report version

1.1. Test Standards

The tests were performed according to following standards:

[FCC 47 Part 2.1093](#): Radiofrequency radiation exposure evaluation: portable devices.

[IEEE Std C95.1, 1999 Edition](#): IEEE Standard for Safety Levels with Respect to Human Exposure to Radio Frequency Electromagnetic Fields, 3 kHz to 300 GHz

[IEEE Std 1528™-2013](#): IEEE Recommended Practice for Determining the Peak Spatial-Average Specific Absorption Rate (SAR) in the Human Head from Wireless Communications Devices: Measurement Techniques.

FCC published RF exposure KDB procedures:

[865664 D01 SAR Measurement 100 MHz to 6 GHz v01r04](#): SAR Measurement Requirements for 100 MHz to 6 GHz

[865664 D02 RF Exposure Reporting v01r02](#): RF Exposure Compliance Reporting and Documentation Considerations

[447498 D01 General RF Exposure Guidance v06](#): Mobile and Portable Device RF Exposure Procedures and Equipment Authorization Policies

[248227 D01 802.11 Wi-Fi SAR v02r02](#): SAR Measurement Procedures for 802.11 a/b/g Transmitters

[941225 D01 3G SAR Procedures v03r01](#): SAR Measurement Procedures for 3G Devices

[941225 D05 SAR for LTE Devices v02r05](#): SAR Evaluation Considerations for LTE Devices

[TCB workshop](#) April, 2019; Page 19, Tissue Simulating Liquids (TSL)

1.2. Report version

Revision No.	Date of issue	Description
N/A	2020-05-07	Original

2. Summary

2.1. Client Information

Applicant:	Kirisun Communication Co.,Ltd.
Address:	3rd Floor, Building A, Tongfang Information Harbour, No.11 Langshan Road, Nanshan District, Shenzhen 518057, P.R.China
Manufacturer:	Kirisun Communication Co.,Ltd.
Address:	3rd Floor, Building A, Tongfang Information Harbour, No.11 Langshan Road, Nanshan District, Shenzhen 518057, P.R.China

2.2. Product Description

Name of EUT:	Smart Device			
Trade Mark:	KIRISUN			
Model No.:	DSJ-K9			
Listed Model(s):	-			
Power supply:	DC 3.8V			
Device Category:	Portable			
Product stage:	Production unit			
RF Exposure Environment:	General Population/Uncontrolled			
Test sample No.:	YPHT20010353002			
Hardware version:	V2.0			
Software version:	K9_V19			
Device Dimension:	Overall (Length x Width x Thickness): 120x65x25mm			
Maximum SAR Value				
Separation Distance:	Head:	25mm		
	Body-worn:	10mm		
	Body-worn (back splint):	0mm		
Max Report SAR Value(1g):	Test location:	PCT	DTS	Simultaneous Tx
	Head:	0.240 W/kg	0.034 W/kg	0.274 W/kg
	Body-worn:	0.428 W/kg	0.126 W/kg	0.554 W/kg
GSM				
Operation Band:	GSM850 PCS1900			
Support Network:	GSM,GPRS,EGPRS			
Operating Mode:	GSM:GMSK GPRS:GMSK EGPRS:8PSK			
GPRS Multi-Slot Class:	12			
EGPRS Multi-Slot Class:	12			
Antenna Type:	FPC			

WCDMA	
Operation Band:	FDD Band II FDD Band IV FDD Band V
Power Class:	Class 3
Operating Mode:	UMTS Rel. 99 (Voice & Data) HSDPA HSUPA
Antenna Type:	FPC
LTE	
Operation Band:	FDD Band 2 FDD Band 4 FDD Band 5 FDD Band 7 FDD Band 12 FDD Band 17 TDD Band 41
Power Class:	Class 3
Operating Mode:	QPSK 16QAM
Antenna Type:	FPC
WiFi 2.4G	
Operating Mode:	802.11b 802.11g 802.11n(HT20) 802.11n(HT40)
Antenna Type:	FPC
Bluetooth	
Version:	BT4.0+EDR
Operating Mode:	GFSK π /4DQPSK 8DPSK
Antenna Type:	FPC
Bluetooth	
Version:	BT4.0+BLE
Operating Mode:	GFSK
Antenna Type:	FPC
<i>Remark:</i>	
1. The EUT battery must be fully charged and checked periodically during the test to ascertain uniform power.	

3. Test Environment

3.1. Test laboratory

Laboratory: Shenzhen Huatongwei International Inspection Co., Ltd.

Address: 1/F, Bldg 3, Hongfa Hi-tech Industrial Park, Genyu Road, Tianliao, Gongming, Shenzhen, China

3.2. Test Facility

CNAS-Lab Code: L1225

Shenzhen Huatongwei International Inspection Co., Ltd. has been assessed and proved to be in compliance with CNAS-CL01 Accreditation Criteria for Testing and Calibration Laboratories (identical to ISO/IEC17025: 2005 General Requirements) for the Competence of Testing and Calibration Laboratories.

A2LA-Lab Cert. No.: 3902.01

Shenzhen Huatongwei International Inspection Co., Ltd. EMC Laboratory has been accredited by A2LA for technical competence in the field of electrical testing, and proved to be in compliance with ISO/IEC 17025: 2005 General Requirements for the Competence of Testing and Calibration Laboratories and any additional program requirements in the identified field of testing.

FCC-Registration No.: 762235

Shenzhen Huatongwei International Inspection Co., Ltd. EMC Laboratory has been registered and fully described in a report filed with the FCC (Federal Communications Commission). The acceptance letter from the FCC is maintained in our files. Registration 762235.

IC-Registration No.: 5377A

Two 3m Alternate Test Site of Shenzhen Huatongwei International Inspection Co., Ltd. has been registered by Certification and Engineering Bureau of Industry Canada for the performance of radiated measurements with Registration No. 5377A.

ACA

Shenzhen Huatongwei International Inspection Co., Ltd. EMC Laboratory can also perform testing for the Australian C-Tick mark as a result of our A2LA accreditation.

3.3. Environmental conditions

During the measurement the environmental conditions were within the listed ranges:

Ambient temperature	18 °C to 25 °C
Ambient humidity	30%RH to 70%RH
Air Pressure	950-1050mbar

4. Equipments Used during the Test

Used	Test Equipment	Manufacturer	Model No.	Serial No.	Cal. date (YY-MM-DD)	Due date (YY-MM-DD)
●	Data Acquisition Electronics DAEx	SPEAG	DAE4	1549	2020/04/04	2021/04/03
●	E-field Probe	SPEAG	EX3DV4	7494	2020/04/01	2021/03/31
●	Universal Radio Communication Tester	R&S	CMW500	137681	2019/06/27	2020/06/26
● Tissue-equivalent liquids Validation						
●	Dielectric Assessment Kit	SPEAG	DAK-3.5	1267	N/A	N/A
○	Dielectric Assessment Kit	SPEAG	DAK-12	1130	N/A	N/A
●	Network analyzer	Keysight	E5071C	MY46733048	2019/10/19	2020/10/18
● System Validation						
○	System Validation Antenna	SPEAG	CLA-150	4024	2018/02/21	2021/02/20
○	System Validation Dipole	SPEAG	D450V3	1102	2018/02/23	2021/02/22
●	System Validation Dipole	SPEAG	D750V3	1180	2018/02/07	2021/02/06
●	System Validation Dipole	SPEAG	D835V2	4d238	2018/02/19	2021/02/18
●	System Validation Dipole	SPEAG	D1750V2	1164	2018/02/06	2021/02/05
●	System Validation Dipole	SPEAG	D1900V2	5d226	2018/02/22	2021/02/21
●	System Validation Dipole	SPEAG	D2450V2	1009	2018/02/05	2021/02/04
●	System Validation Dipole	SPEAG	D2600V2	1150	2018/02/05	2021/02/04
○	System Validation Dipole	SPEAG	D5GHzV2	1273	2018/02/21	2021/02/20
●	Signal Generator	R&S	SMB100A	114360	2019/08/15	2020/08/14
●	Power Viewer for Windows	R&S	N/A	N/A	N/A	N/A
●	Power sensor	R&S	NRP18A	101010	2019/08/15	2020/08/14
●	Power sensor	R&S	NRP18A	101011	2019/08/15	2020/08/14
●	Power Amplifier	BONN	BLWA 0160-2M	1811887	2019/11/14	2020/11/13
●	Dual Directional Coupler	Mini-Circuits	ZHDC-10-62-S+	F975001814	2019/11/14	2020/11/13
●	Attenuator	Mini-Circuits	VAT-3W2+	1819	2019/11/14	2020/11/13
●	Attenuator	Mini-Circuits	VAT-10W2+	1741	2019/11/14	2020/11/13

Note:

1. The Probe, Dipole and DAE calibration reference to the Appendix B and C.
2. Referring to KDB865664 D01, the dipole calibration interval can be extended to 3 years with justification. The dipole are also not physically damaged or repaired during the interval.

5. Measurement Uncertainty

Per KDB 865664 D01 SAR Measurement 100 MHz to 6 GHz, when the highest measured 1-g SAR within a frequency band is < 1.5 W/kg and the measured 10-g SAR within a frequency band is < 3.75 W/kg. The expanded SAR measurement uncertainty must be $\leq 30\%$, for a confidence interval of $k = 2$. If these conditions are met, extensive SAR measurement uncertainty analysis described in IEEE Std 1528-2013 is not required in SAR reports submitted for equipment approval.

Therefore, the measurement uncertainty is not required.

6. SAR Measurements System Configuration

6.1. SAR Measurement Set-up

The DASY5 system for performing compliance tests consists of the following items:

A standard high precision 6-axis robot (Stäubli RX family) with controller and software. An arm extension for accommodating the data acquisition electronics (DAE).

A dosimetric probe, i.e. an isotropic E-field probe optimized and calibrated for usage in tissue simulating liquid. The probe is equipped with an optical surface detector system.

A data acquisition electronic (DAE) which performs the signal amplification, signal multiplexing, AD-conversion, offset measurements, mechanical surface detection, collision detection, etc. The unit is battery powered with standard or rechargeable batteries. The signal is optically transmitted to the EOC.

A unit to operate the optical surface detector which is connected to the EOC.

The Electro-Optical Coupler (EOC) performs the conversion from the optical into a digital electric signal of the DAE. The EOC is connected to the DASY5 measurement server.

The DASY5 measurement server, which performs all real-time data evaluation for field measurements and surface detection, controls robot movements and handles safety operation. A computer operating Windows 2003.

DASY5 software and SEMCAD data evaluation software.

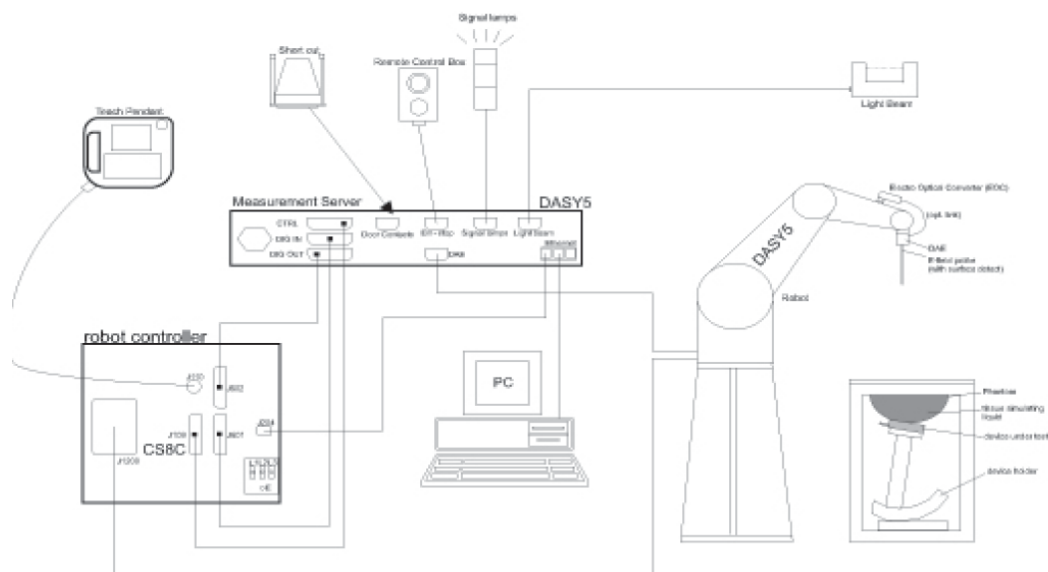
Remote control with teach panel and additional circuitry for robot safety such as warning lamps, etc.

The generic twin phantom enabling the testing of left-hand and right-hand usage.

The device holder for handheld Mobile Phones.

Tissue simulating liquid mixed according to the given recipes.

System validation dipoles allowing to validate the proper functioning of the system.



6.2. DASY5 E-field Probe System

The SAR measurements were conducted with the dosimetric probe EX3DV4 (manufactured by SPEAG), designed in the classical triangular configuration and optimized for dosimetric evaluation.

● Probe Specification

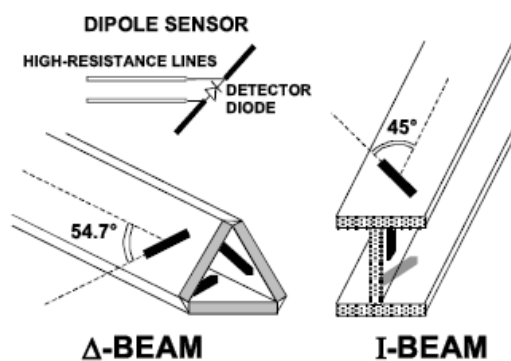
Construction	Symmetrical design with triangular core Interleaved sensors Built-in shielding against static charges PEEK enclosure material (resistant to organic solvents, e.g., DGBE)
Calibration	ISO/IEC 17025 calibration service available.
Frequency	4 MHz to 10 GHz; Linearity: ± 0.2 dB (30 MHz to 6 GHz)
Directivity	± 0.3 dB in HSL (rotation around probe axis) ± 0.5 dB in tissue material (rotation normal to probe axis)
Dynamic Range	10 μ W/g to > 100 W/kg; Linearity: ± 0.2 dB
Dimensions	Overall length: 337 mm (Tip: 20 mm) Tip diameter: 2.5 mm (Body: 12 mm) Distance from probe tip to dipole centers: 1.0 mm
Application	General dosimetry up to 6 GHz Dosimetry in strong gradient fields Compliance tests of Mobile Phones
Compatibility	DASY3, DASY4, DASY52 SAR and higher, EASY4/MRI



◆ Isotropic E-Field Probe

The isotropic E-Field probe has been fully calibrated and assessed for isotropicity, and boundary effect within a controlled environment. Depending on the frequency for which the probe is calibrated the method utilized for calibration will change.

The E-Field probe utilizes a triangular sensor arrangement as detailed in the diagram below:



6.3. Phantoms

The phantom used for all tests i.e. for both system checks and device testing, was the twin-headed "SAM Phantom", manufactured by SPEAG. The SAM twin phantom is a fiberglass shell phantom with 2mm shell thickness (except the ear region, where shell thickness increases to 6mm).

System checking was performed using the flat section, whilst Head SAR tests used the left and right head profile sections. Body SAR testing also used the flat section between the head profiles.

Phantom for compliance testing of handheld and body-mounted wireless devices in the frequency range of 30 MHz to 6 GHz. ELI is fully compatible with standard and all known tissuesimulating liquids. ELI has been optimized regarding its performance and can beintegrated into our standard phantom tables. A cover prevents evaporation ofthe liquid. Reference markings on the phantom allow installation of thecomplete setup, including all predefined phantom positions and measurementgrids, by teaching three points. The phantom is compatible with all SPEAGdosimetric probes and dipoles.



SAM-Twin Phantom



ELI Phantom

6.4. Device Holder

The device was placed in the device holder (illustrated below) that is supplied by SPEAG as an integral part of the DASY system.

The DASY device holder is designed to cope with the different positions given in the standard. It has two scales for device rotation (with respect to the body axis) and device inclination (with respect to the line between the ear reference points). The rotation centers for both scales is the ear reference point (ERP). Thus the device needs no repositioning when changing the angles.



Device holder supplied by SPEAG

7. SAR Test Procedure

7.1. Scanning Procedure

The DASY5 installation includes predefined files with recommended procedures for measurements and validation. They are read-only document files and destined as fully defined but unmeasured masks. All test positions (head or body-worn) are tested with the same configuration of test steps differing only in the grid definition for the different test positions.

The “reference” and “drift” measurements are located at the beginning and end of the batch process. They measure the field drift at one single point in the liquid over the complete procedure. The indicated drift is mainly the variation of the DUT’s output power and should vary max. $\pm 5\%$.

The “surface check” measurement tests the optical surface detection system of the DASY5 system by repeatedly detecting the surface with the optical and mechanical surface detector and comparing the results. The output gives the detecting heights of both systems, the difference between the two systems and the standard deviation of the detection repeatability. Air bubbles or refraction in the liquid due to separation of the sugar-water mixture gives poor repeatability (above $\pm 0.1\text{mm}$). To prevent wrong results tests are only executed when the liquid is free of air bubbles. The difference between the optical surface detection and the actual surface depends on the probe and is specified with each probe (It does not depend on the surface reflectivity or the probe angle to the surface within $\pm 30^\circ$.)

Area Scan

The Area Scan is used as a fast scan in two dimensions to find the area of high field values before running a detailed measurement around the hot spot. Before starting the area scan a grid spacing of 15 mm x 15 mm is set. During the scan the distance of the probe to the phantom remains unchanged. After finishing area scan, the field maxima within a range of 2 dB will be ascertained.

Zoom Scan

After the maximum interpolated values were calculated between the points in the cube, the SAR was averaged over the spatial volume (1g or 10g) using a 3D-Spline interpolation algorithm. The 3D-spline is composed of three one-dimensional splines with the “Not a knot” condition (in x, y, and z directions). The volume was then integrated with the trapezoidal algorithm.

Spatial Peak Detection

The procedure for spatial peak SAR evaluation has been implemented and can determine values of masses of 1g and 10g, as well as for user-specific masses. The DASY5 system allows evaluations that combine measured data and robot positions, such as:

- maximum search
- extrapolation
- boundary correction
- peak search for averaged SAR

During a maximum search, global and local maxima searches are automatically performed in 2-D after each Area Scan measurement with at least 6 measurement points. It is based on the evaluation of the local SAR gradient calculated by the Quadratic Shepard’s method. The algorithm will find the global maximum and all local maxima within -2 dB of the global maxima for all SAR distributions.

Extrapolation routines are used to obtain SAR values between the lowest measurement points and the inner phantom surface. The extrapolation distance is determined by the surface detection distance and the probe sensor offset. Several measurements at different distances are necessary for the extrapolation. Extrapolation routines require at least 10 measurement points in 3-D space.

They are used in the Zoom Scan to obtain SAR values between the lowest measurement points and the inner phantom surface. The routine uses the modified Quadratic Shepard’s method for extrapolation.

A Z-axis scan measures the total SAR value at the x-and y-position of the maximum SAR value found during the cube scan. The probe is moved away in z-direction from the bottom of the SAM phantom in 5mm steps.

Table 1: Area and Zoom Scan Resolutions per FCC KDB Publication 865664 D01v04

		≤ 3 GHz	> 3 GHz
Maximum distance from closest measurement point (geometric center of probe sensors) to phantom surface		5 mm ± 1 mm	$\frac{1}{2} \cdot \delta \cdot \ln(2)$ mm ± 0.5 mm
Maximum probe angle from probe axis to phantom surface normal at the measurement location		30° ± 1°	20° ± 1°
Maximum area scan spatial resolution: Δx_{Area} , Δy_{Area}		≤ 2 GHz: ≤ 15 mm 2 – 3 GHz: ≤ 12 mm	3 – 4 GHz: ≤ 12 mm 4 – 6 GHz: ≤ 10 mm
		When the x or y dimension of the test device, in the measurement plane orientation, is smaller than the above, the measurement resolution must be ≤ the corresponding x or y dimension of the test device with at least one measurement point on the test device.	
Maximum zoom scan spatial resolution: Δx_{Zoom} , Δy_{Zoom}		≤ 2 GHz: ≤ 8 mm 2 – 3 GHz: ≤ 5 mm*	3 – 4 GHz: ≤ 5 mm* 4 – 6 GHz: ≤ 4 mm*
Maximum zoom scan spatial resolution, normal to phantom surface	uniform grid: $\Delta z_{Zoom}(n)$	≤ 5 mm	3 – 4 GHz: ≤ 4 mm 4 – 5 GHz: ≤ 3 mm 5 – 6 GHz: ≤ 2 mm
	graded grid	$\Delta z_{Zoom}(1)$: between 1 st two points closest to phantom surface	≤ 4 mm 3 – 4 GHz: ≤ 3 mm 4 – 5 GHz: ≤ 2.5 mm 5 – 6 GHz: ≤ 2 mm
		$\Delta z_{Zoom}(n>1)$: between subsequent points	≤ 1.5 · $\Delta z_{Zoom}(n-1)$ mm
Minimum zoom scan volume	x, y, z	≥ 30 mm	3 – 4 GHz: ≥ 28 mm 4 – 5 GHz: ≥ 25 mm 5 – 6 GHz: ≥ 22 mm
Note: δ is the penetration depth of a plane-wave at normal incidence to the tissue medium; see IEEE Std 1528-2013 for details. * When zoom scan is required and the <i>reported</i> SAR from the <i>area scan based 1-g SAR estimation</i> procedures of KDB Publication 447498 is ≤ 1.4 W/kg, ≤ 8 mm, ≤ 7 mm and ≤ 5 mm zoom scan resolution may be applied, respectively, for 2 GHz to 3 GHz, 3 GHz to 4 GHz and 4 GHz to 6 GHz.			

7.2. Data Storage and Evaluation

Data Storage

The DASY5 software stores the acquired data from the data acquisition electronics as raw data (in microvolt readings from the probe sensors),s together with all necessary software parameters for the data evaluation (probe calibration data, liquid parameters and device frequency and modulation data) in measurement files with the extension “.DA4”. The software evaluates the desired unit and format for output each time the data is visualized or exported. This allows verification of the complete software setup even after the measurement and allows correction of incorrect parameter settings. For example, if a measurement has been performed with a wrong crest factor parameter in the device setup, the parameter can be corrected afterwards and the data can be re-evaluated.

The measured data can be visualized or exported in different units or formats, depending on the selected probe type ([V/m], [A/m], [°C], [W/kg], [mW/cm²], [dBrel], etc.). Some of these units are not available in certain situations or show meaningless results, e.g., a SAR output in a lossless media will always be zero. Raw data can also be exported to perform the evaluation with other software packages.

Data Evaluation

The SEMCAD software automatically executes the following procedures to calculate the field units from the microvolt readings at the probe connector. The parameters used in the evaluation are stored in the configuration modules of the software:

Probe parameters:	Sensitivity:	Normi, ai0, ai1, ai2
	Conversion factor:	ConvFi
	Diode compression point:	Dcpi
Device parameters:	Frequency:	f
	Crest factor:	cf
Media parameters:	Conductivity:	σ
	Density:	ρ

These parameters must be set correctly in the software. They can be found in the component documents or they can be imported into the software from the configuration files issued for the DASY5 components. In the direct measuring mode of the multimeter option, the parameters of the actual system setup are used. In the scan visualization and export modes, the parameters stored in the corresponding document files are used.

The first step of the evaluation is a linearization of the filtered input signal to account for the compression characteristics of the detector diode. The compensation depends on the input signal, the diode type and the DC-transmission factor from the diode to the evaluation electronics. If the exciting field is pulsed, the crest factor of the signal must be known to correctly compensate for peak power. The formula for each channel can be given as:

$$V_i = U_i + U_i^2 \cdot \frac{cf}{dcp_i}$$

Vi:	compensated signal of channel (i = x, y, z)
Ui:	input signal of channel (i = x, y, z)
cf:	crest factor of exciting field (DASY parameter)
dcp _i :	diode compression point (DASY parameter)

From the compensated input signals the primary field data for each channel can be evaluated:

$$E - \text{fieldprobes} : \quad E_i = \sqrt{\frac{V_i}{\text{Norm}_i \cdot \text{ConvF}}}$$

$$H - \text{fieldprobes} : \quad H_i = \sqrt{V_i} \cdot \frac{a_{i0} + a_{i1}f + a_{i2}f^2}{f}$$

Vi:	compensated signal of channel (i = x, y, z)
Norm _i :	sensor sensitivity of channel (i = x, y, z), [mV/(V/m) ²] for E-field Probes
ConvF:	sensitivity enhancement in solution
a _{ij} :	sensor sensitivity factors for H-field probes
f:	carrier frequency [GHz]
E _i :	electric field strength of channel i in V/m
H _i :	magnetic field strength of channel i in A/m

The RSS value of the field components gives the total field strength (Hermitian magnitude):

$$E_{tot} = \sqrt{E_x^2 + E_y^2 + E_z^2}$$

The primary field data are used to calculate the derived field units.

$$SAR = E_{tot}^2 \cdot \frac{\sigma}{\rho \cdot 1'000}$$

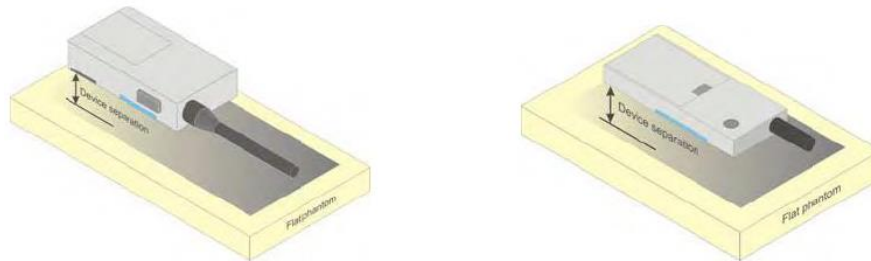
SAR: local specific absorption rate in W/kg
Etot: total field strength in V/m
 σ : conductivity in [mho/m] or [Siemens/m]
 ρ : equivalent tissue density in g/cm³

Note that the density is normally set to 1 (or 1.06), to account for actual brain density rather than the density of the simulation liquid.

8. Position of the wireless device in relation to the phantom

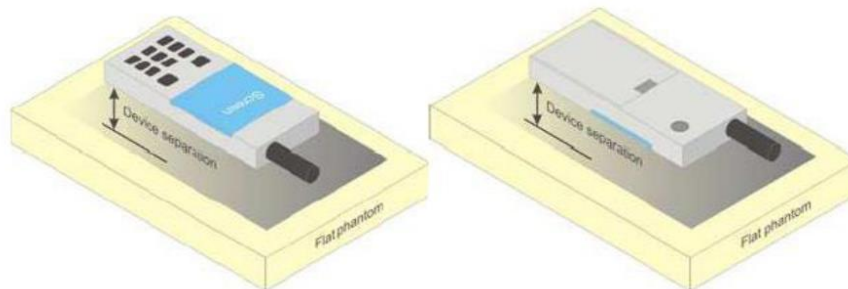
8.1. Front-of-face

A typical example of a front-of-face device is a two-way radio that is held at a distance from the face of the user when transmitting. In these cases the device under test shall be positioned at the distance to the phantom surface that corresponds to the intended use as specified by the manufacturer in the user instructions. If the intended use is not specified, a separation distance of 25 mm between the phantom surface and the device shall be used.



8.2. Body Position

Devices that support transmission while used with body-worn accessories must be tested for body-worn accessory SAR compliance, typically according to the smallest test separation distance required for the group of body-worn accessories with similar operating and exposure characteristics. Devices that are designed to operate on the body of users using lanyards and straps or without requiring additional body-worn accessories must be tested for SAR compliance using a conservative minimum test separation distance $\leq 5\text{mm}$ to support compliance.



Picture 4 Test positions for body-worn devices

9. Dielectric Property Measurements & System Check

9.1. Tissue Dielectric Parameters

The temperature of the tissue-equivalent medium used during measurement must also be within 18°C to 25°C and within $\pm 2^\circ\text{C}$ of the temperature when the tissue parameters are characterized.

The dielectric parameters must be measured before the tissue-equivalent medium is used in a series of SAR measurements. The parameters should be re-measured after each 3-4 days of use; or earlier if the dielectric parameters can become out of tolerance; for example, when the parameters are marginal at the beginning of the measurement series.

The dielectric constant (ϵ_r) and conductivity (σ) of typical tissue-equivalent media recipes are expected to be within $\pm 5\%$ of the required target values; but for SAR measurement systems that have implemented the SAR error compensation algorithms documented in IEEE Std 1528-2013, to automatically compensate the measured SAR results for deviations between the measured and required tissue dielectric parameters, the tolerance for ϵ_r and σ may be relaxed to $\pm 10\%$. This is limited to frequencies ≤ 3 GHz.

Tissue Dielectric Parameters

FCC KDB 865664 D01 SAR Measurement 100 MHz to 6 GHz

Tissue dielectric parameters for Head and Body				
Target Frequency (MHz)	Head		Body	
	ϵ_r	$\sigma(\text{S/m})$	ϵ_r	$\sigma(\text{S/m})$
750	41.9	0.89	55.5	0.96
835	41.5	0.90	55.2	0.97
1750	40.1	1.37	53.4	1.49
1800-2000	40.0	1.40	53.3	1.52
2450	39.2	1.80	52.7	1.95
2600	39.0	1.96	52.5	2.16

IEEE Std 1528-2013

Refer to Table 3 within the IEEE Std 1528-2013

Dielectric Property Measurements Results:

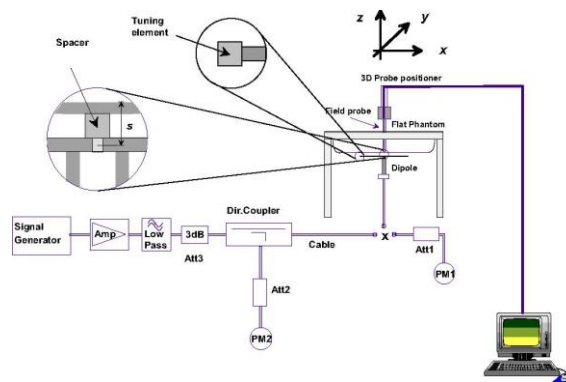
Dielectric performance of Head tissue simulating liquid									
Frequency (MHz)	ϵ_r		σ (S/m)		Delta (ϵ_r)	Delta (σ)	Limit	Temp (°C)	Date
	Target	Measured	Target	Measured					
750	41.90	42.99	0.890	0.915	2.60%	2.80%	±5%	22.5	2020/4/17
835	41.50	42.70	0.900	0.944	2.89%	4.89%	±5%	22.5	2020/4/13
1750	40.10	40.73	1.370	1.395	1.57%	1.82%	±5%	22.5	2020/4/14
1900	40.00	40.48	1.400	1.458	1.20%	4.14%	±5%	22.5	2020/4/15
2450	39.20	39.65	1.800	1.870	1.15%	3.89%	±5%	22.5	2020/4/17
2600	39.00	39.39	1.960	1.990	1.00%	1.53%	±5%	22.5	2020/4/16

9.2. System Check

SAR system verification is required to confirm measurement accuracy, according to the tissue dielectric media, probe calibration points and other system operating parameters required for measuring the SAR of a test device. The system verification must be performed for each frequency band and within the valid range of each probe calibration point required for testing the device. The same SAR probe(s) and tissue-equivalent media combinations used with each specific SAR system for system verification must be used for device testing. When multiple probe calibration points are required to cover substantially large transmission bands, independent system verifications are required for each probe calibration point. A system verification must be performed before each series of SAR measurements using the same probe calibration point and tissue-equivalent medium. Additional system verification should be considered according to the conditions of the tissue-equivalent medium and measured tissue dielectric parameters, typically every three to four days when the liquid parameters are re-measured or sooner when marginal liquid parameters are used at the beginning of a series of measurements.

System Performance Check Measurement Conditions:

- ◆ The measurements were performed in the flat section of the TWIN SAM or ELI phantom, shell thickness: 2.0 ± 0.2 mm (bottom plate) filled with Body or Head simulating liquid of the following parameters.
- ◆ The depth of tissue-equivalent liquid in a phantom must be ≥ 15.0 cm for SAR measurements ≤ 3 GHz and ≥ 10.0 cm for measurements > 3 GHz.
- ◆ The DASY system with an E-Field Probe was used for the measurements.
- ◆ The dipole was mounted on the small tripod so that the dipole feed point was positioned below the center marking of the flat phantom section and the dipole was oriented parallel to the body axis (the long side of the phantom). The standard measuring distance was 10 mm (above 1 GHz) and 15 mm (below 1 GHz) from dipole center to the simulating liquid surface.
- ◆ The coarse grid with a grid spacing of 15 mm was aligned with the dipole.
For 5 GHz band - The coarse grid with a grid spacing of 10 mm was aligned with the dipole.
- ◆ Special 7x7x7 (below 3 GHz) and/or 8x8x7 (above 3 GHz) fine cube was chosen for the cube.
- ◆ The results are normalized to 1 W input power.



System Performance Check Setup

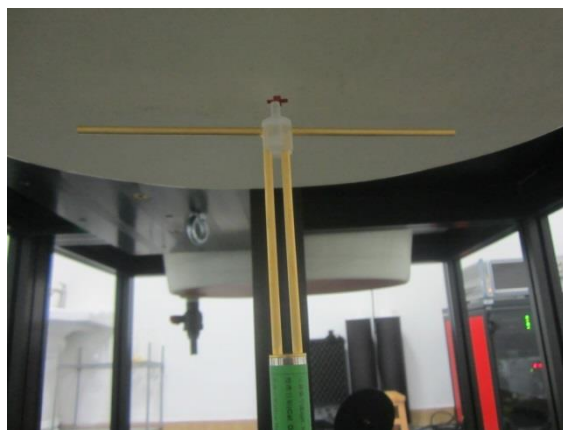


Photo of Dipole Setup

System Check Result:

The 1-g and 10-g SAR measured with a reference dipole, using the required tissue-equivalent medium at the test frequency, must be within $\pm 10\%$ of the manufacturer calibrated dipole SAR target.

Head											
Frequency (MHz)	1g SAR			10g SAR			Delta (1g)	Delta (10g)	Limit	Temp (°C)	Date
	Target 1W	Normalize to 1W	Measured 250mW	Target 1W	Normalize to 1W	Measured 250mW					
750	8.22	8.80	2.20	5.39	5.76	1.44	7.06%	6.86%	$\pm 10\%$	22.5	2020/4/17
835	9.51	10.16	2.54	6.15	6.56	1.64	6.83%	6.67%	$\pm 10\%$	22.5	2020/4/13
1750	36.60	38.32	9.58	19.40	20.20	5.05	4.70%	4.12%	$\pm 10\%$	22.5	2020/4/14
1900	40.30	42.40	10.60	21.10	21.60	5.40	5.21%	2.37%	$\pm 10\%$	22.5	2020/4/15
2450	51.50	52.40	13.10	24.10	24.16	6.04	1.75%	0.25%	$\pm 10\%$	22.5	2020/4/17
2600	55.60	58.40	14.60	25.00	25.88	6.47	5.04%	3.52%	$\pm 10\%$	22.5	2020/4/16

Plots of System Performance Check System Performance Check-Head 750MHz

DUT: D750V3; Type: D750V3; Serial: 1180

Date: 2020-04-17

Communication System: UID 0, A-CW (0); Frequency: 750 MHz; Duty Cycle: 1:1

Medium parameters used: $f = 750 \text{ MHz}$; $\sigma = 0.915 \text{ S/m}$; $\epsilon_r = 42.986$; $\rho = 1000 \text{ kg/m}^3$

Phantom section: Flat Section

Ambient Temperature: 22.6°C ; Liquid Temperature: 22.4°C ;

DASY5 Configuration:

- Probe: EX3DV4 - SN7494; ConvF(10.76, 10.76, 10.76) @ 750 MHz; Calibrated: 4/1/2020
- Sensor-Surface: 1.4mm (Mechanical Surface Detection)
- Electronics: DAE4 Sn1549; Calibrated: 4/4/2020
- Phantom: Twin-SAM V8.0 ; Type: QD 000 P41 AA; Serial: 1974
- DASY52 52.10.2(1495); SEMCAD X 14.6.12(7450)

Head/d=15mm, Pin=250mW, dist=1.4mm/Area Scan (51x121x1): Interpolated grid:

$dx=1.500 \text{ mm}$, $dy=1.500 \text{ mm}$

Maximum value of SAR (interpolated) = 2.98 W/kg

Head/d=15mm, Pin=250mW, dist=1.4mm/Zoom Scan (7x7x7)/Cube 0:

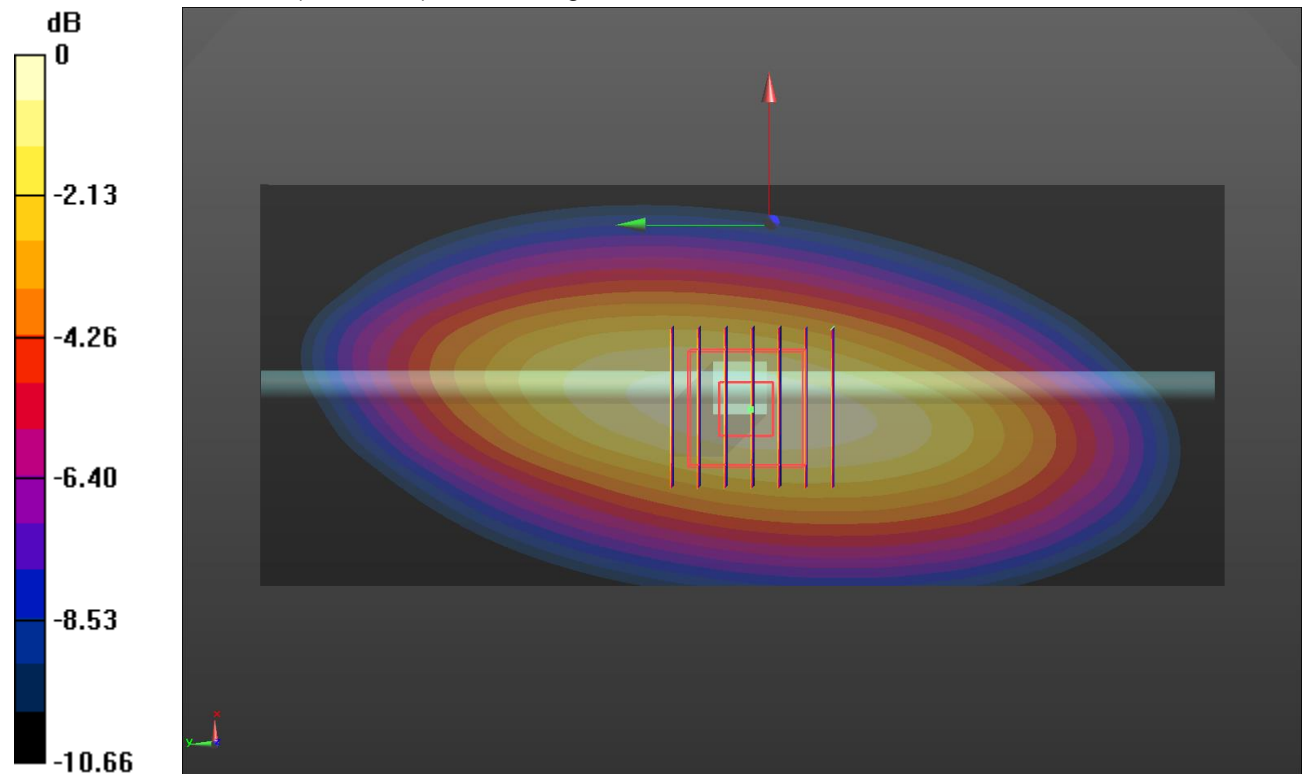
Measurement grid: $dx=5\text{mm}$, $dy=5\text{mm}$, $dz=5\text{mm}$

Reference Value = 58.19 V/m ; Power Drift = -0.06 dB

Peak SAR (extrapolated) = 3.48 W/kg

SAR(1 g) = 2.2 W/kg ; SAR(10 g) = 1.44 W/kg

Maximum value of SAR (measured) = 3.02 W/kg



0 dB = 3.02 W/kg = 4.80 dBW/kg

System Performance Check-Head 835MHz

DUT: D835V2; Type: D835V2; Serial: 4d238

Date: 2020-04-13

Communication System: UID 0, CW (0); Frequency: 835 MHz;Duty Cycle: 1:1

Medium parameters used: $f = 835 \text{ MHz}$; $\sigma = 0.944 \text{ S/m}$; $\epsilon_r = 42.698$; $\rho = 1000 \text{ kg/m}^3$

Phantom section: Flat Section

Ambient Temperature:22.5°C;Liquid Temperature:22.3°C;

DASY5 Configuration:

- Probe: EX3DV4 - SN7494; ConvF(10.46, 10.46, 10.46) @ 835 MHz; Calibrated: 4/1/2020
- Sensor-Surface: 1.4mm (Mechanical Surface Detection)
- Electronics: DAE4 Sn1549; Calibrated: 4/4/2020
- Phantom: Twin-SAM V8.0 ; Type: QD 000 P41 AA; Serial: 1974
- DASY52 52.10.2(1495); SEMCAD X 14.6.12(7450)

Head/d=15mm, Pin=250mW/Area Scan (41x101x1): Interpolated grid: dx=1.500 mm, dy=1.500 mm

Maximum value of SAR (interpolated) = 3.47 W/kg

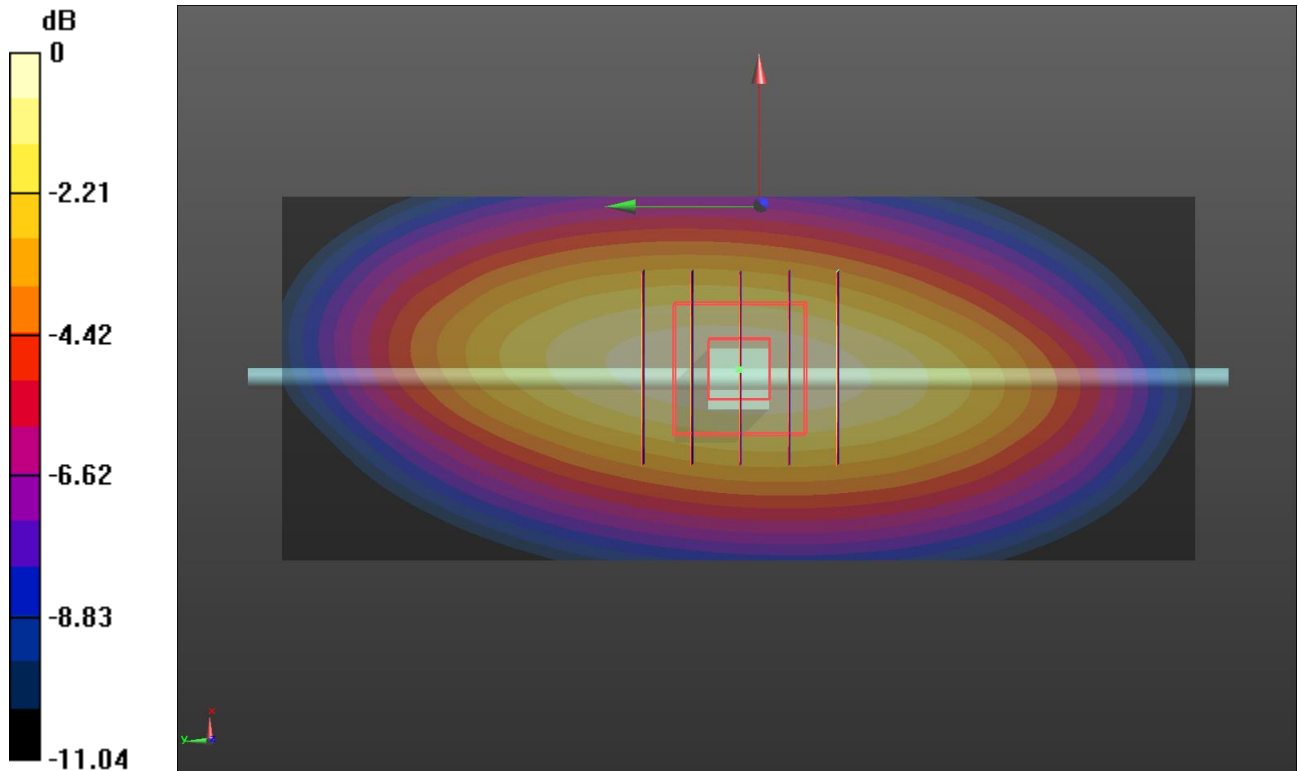
Head/d=15mm, Pin=250mW/Zoom Scan (5x5x7)/Cube 0: Measurement grid: dx=8mm, dy=8mm, dz=5mm

Reference Value = 62.16 V/m; Power Drift = -0.04 dB

Peak SAR (extrapolated) = 4.01 W/kg

SAR(1 g) = 2.54 W/kg; SAR(10 g) = 1.64 W/kg

Maximum value of SAR (measured) = 3.48 W/kg



0 dB = 3.48 W/kg = 5.42 dBW/kg

System Performance Check-Head 1750MHz

DUT: D1750V2; Type: D1750V2; Serial: 1164

Date: 2020-04-14

Communication System: UID 0, CW (0); Frequency: 1750 MHz; Duty Cycle: 1:1

Medium parameters used: $f = 1750$ MHz; $\sigma = 1.395$ S/m; $\epsilon_r = 40.734$; $\rho = 1000$ kg/m³

Phantom section: Flat Section

Ambient Temperature: 22.4°C; Liquid Temperature: 22.2°C;

DASY5 Configuration:

- Probe: EX3DV4 - SN7494; ConvF(8.92, 8.92, 8.92) @ 1750 MHz; Calibrated: 4/1/2020
- Sensor-Surface: 1.4mm (Mechanical Surface Detection)
- Electronics: DAE4 Sn1549; Calibrated: 4/4/2020
- Phantom: Twin-SAM V8.0 ; Type: QD 000 P41 AA; Serial: 1974
- DASY52 52.10.2(1495); SEMCAD X 14.6.12(7450)

Head/d=10mm, Pin=250mW/Area Scan (41x61x1): Interpolated grid: dx=1.500 mm, dy=1.500 mm

Maximum value of SAR (interpolated) = 15.0 W/kg

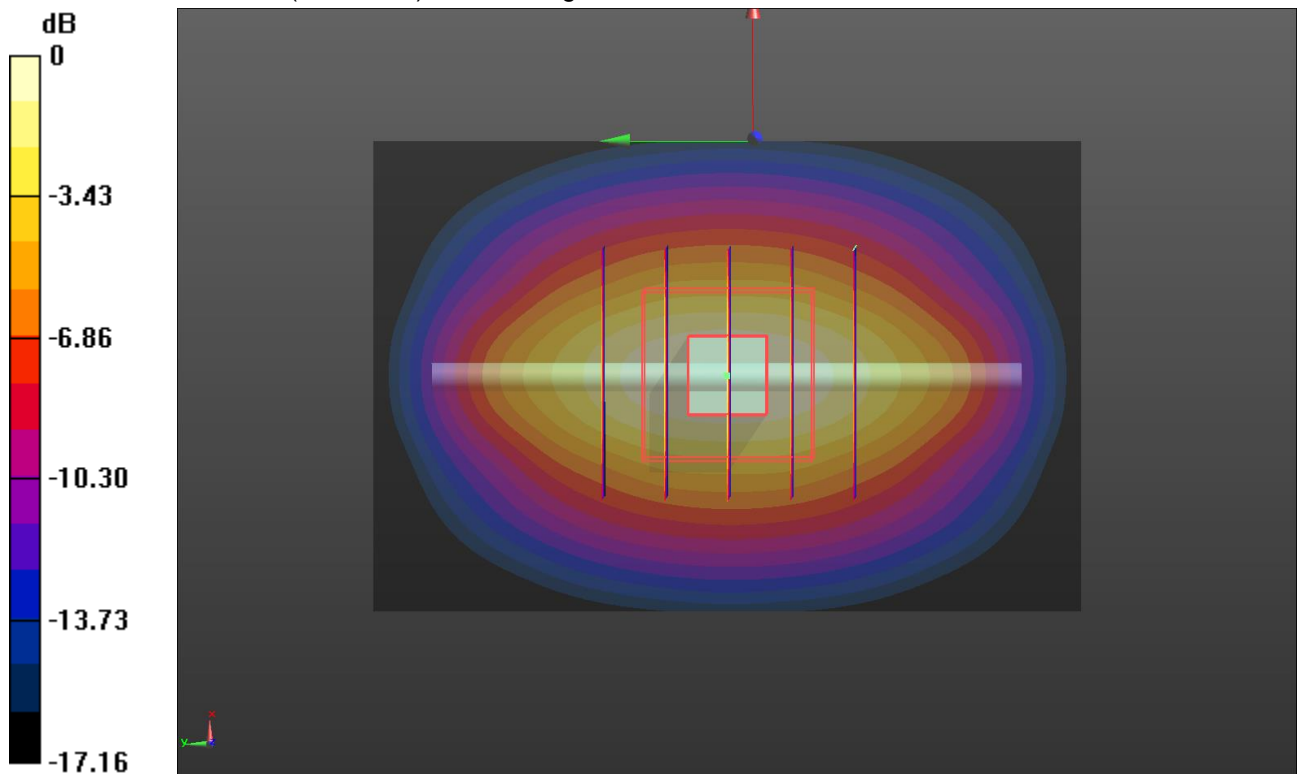
Head/d=10mm, Pin=250mW/Zoom Scan (5x5x7)/Cube 0: Measurement grid: dx=8mm, dy=8mm, dz=5mm

Reference Value = 106.4 V/m; Power Drift = -0.00 dB

Peak SAR (extrapolated) = 18.0 W/kg

SAR(1 g) = 9.58 W/kg; SAR(10 g) = 5.05 W/kg

Maximum value of SAR (measured) = 15.0 W/kg



0 dB = 15.0 W/kg = 11.76 dBW/kg

System Performance Check-Head 1900MHz

DUT: D1900V2; Type: D1900V2; Serial: 5d226
Date: 2020-04-15

Communication System: UID 0, CW (0); Frequency: 1900 MHz; Duty Cycle: 1:1
Medium parameters used: $f = 1900$ MHz; $\sigma = 1.458$ S/m; $\epsilon_r = 40.478$; $\rho = 1000$ kg/m³
Phantom section: Flat Section
Ambient Temperature: 22.3°C; Liquid Temperature: 22.1°C;

DASY5 Configuration:

- Probe: EX3DV4 - SN7494; ConvF(8.6, 8.6, 8.6) @ 1900 MHz; Calibrated: 4/1/2020
- Sensor-Surface: 1.4mm (Mechanical Surface Detection)
- Electronics: DAE4 Sn1549; Calibrated: 4/4/2020
- Phantom: Twin-SAM V8.0 ; Type: QD 000 P41 AA; Serial: 1974
- DASY52 52.10.2(1495); SEMCAD X 14.6.12(7450)

Head/d=10mm, Pin=250mW/Area Scan (41x61x1): Interpolated grid: dx=1.500 mm, dy=1.500 mm

Maximum value of SAR (interpolated) = 16.9 W/kg

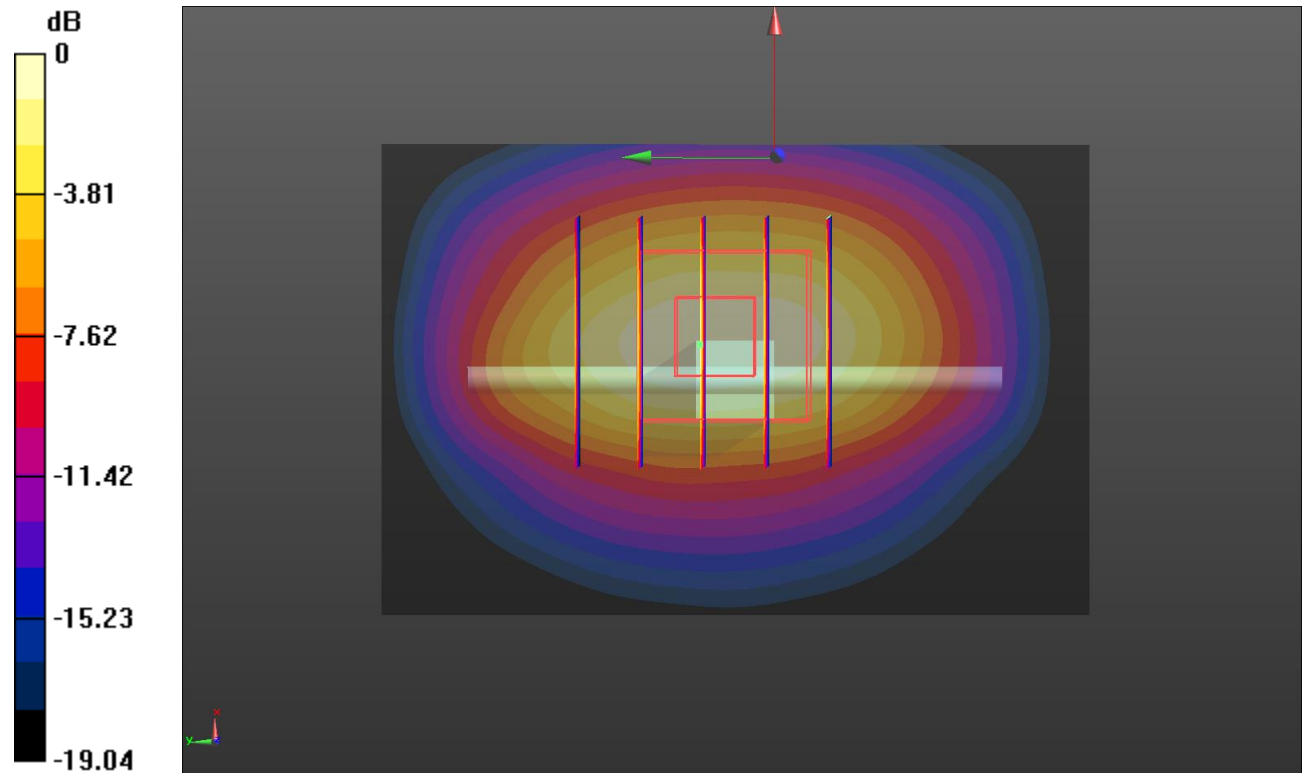
Head/d=10mm, Pin=250mW/Zoom Scan (5x5x7)/Cube 0: Measurement grid: dx=8mm, dy=8mm, dz=5mm

Reference Value = 99.26 V/m; Power Drift = -0.15 dB

Peak SAR (extrapolated) = 20.6 W/kg

SAR(1 g) = 10.6 W/kg; SAR(10 g) = 5.4 W/kg

Maximum value of SAR (measured) = 16.8 W/kg



0 dB = 16.8 W/kg = 12.25 dBW/kg

SystemPerformanceCheck-Head 2450MHz

DUT: D2450V2; Type: D2450V2; Serial: 1009

Date: 2020-04-17

Communication System: UID 0, CW (0); Frequency: 2450 MHz;Duty Cycle: 1:1

Medium parameters used (interpolated): $f = 2450$ MHz; $\sigma = 1.87$ S/m; $\epsilon_r = 39.649$; $\rho = 1000$ kg/m³

Phantom section: Flat Section

Ambient Temperature:22.2°C;Liquid Temperature:22.0°C;

DASY5 Configuration:

- Probe: EX3DV4 - SN7494; ConvF(7.91, 7.91, 7.91) @ 2450 MHz; Calibrated: 4/1/2020
- Sensor-Surface: 1.4mm (Mechanical Surface Detection)
- Electronics: DAE4 Sn1549; Calibrated: 4/4/2020
- Phantom: Twin-SAM V8.0 ; Type: QD 000 P41 AA; Serial: 1974
- DASY52 52.10.2(1495); SEMCAD X 14.6.12(7450)

Head/d=10mm,Pin=250mW/Area Scan (41x61x1): Interpolated grid: dx=1.200 mm, dy=1.200 mm

Maximum value of SAR (interpolated) = 22.9 W/kg

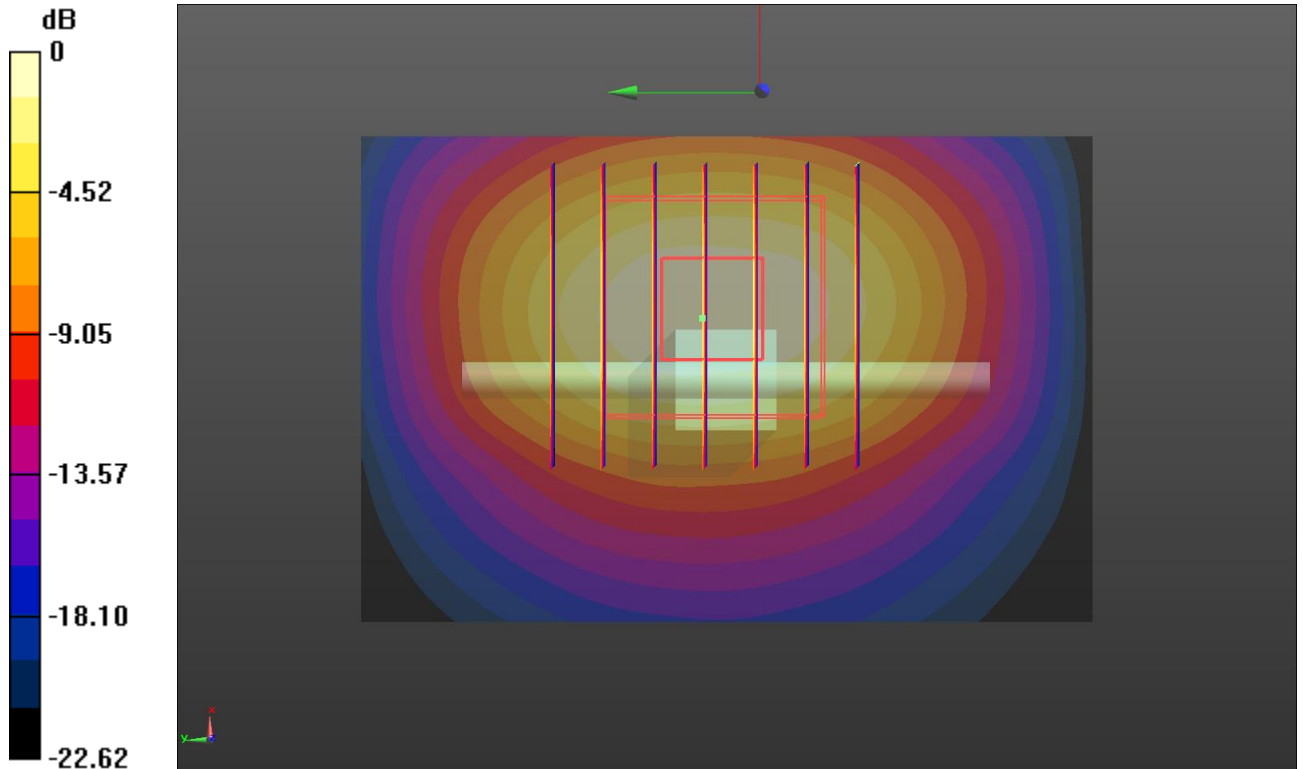
Head/d=10mm,Pin=250mW/Zoom Scan (7x7x7)/Cube 0: Measurement grid: dx=5mm, dy=5mm, dz=5mm

Reference Value = 92.24 V/m; Power Drift = -0.14 dB

Peak SAR (extrapolated) = 27.4 W/kg

SAR(1 g) = 13.1 W/kg; SAR(10 g) = 6.04 W/kg

Maximum value of SAR (measured) = 22.0 W/kg



0 dB = 22.0 W/kg = 13.42 dBW/kg

SystemPerformanceCheck-Head 2600MHz

DUT: D2600V2; Type: D2600V2; Serial: 1150

Date: 2020-04-16

Communication System: UID 0, CW (0); Frequency: 2600 MHz;Duty Cycle: 1:1

Medium parameters used: $f = 2600$ MHz; $\sigma = 1.99$ S/m; $\epsilon_r = 39.388$; $\rho = 1000$ kg/m³

Phantom section: Flat Section

Ambient Temperature:22.1°C;Liquid Temperature:21.9°C;

DASY5 Configuration:

- Probe: EX3DV4 - SN7494; ConvF(7.72, 7.72, 7.72) @ 2600 MHz; Calibrated: 4/1/2020
- Sensor-Surface: 1.4mm (Mechanical Surface Detection)
- Electronics: DAE4 Sn1549; Calibrated: 4/4/2020
- Phantom: Twin-SAM V8.0 ; Type: QD 000 P41 AA; Serial: 1974
- DASY52 52.10.2(1495); SEMCAD X 14.6.12(7450)

Head/d=10mm,Pin=250mW/Area Scan (41x51x1): Interpolated grid: dx=1.200 mm, dy=1.200 mm

Maximum value of SAR (interpolated) = 26.8 W/kg

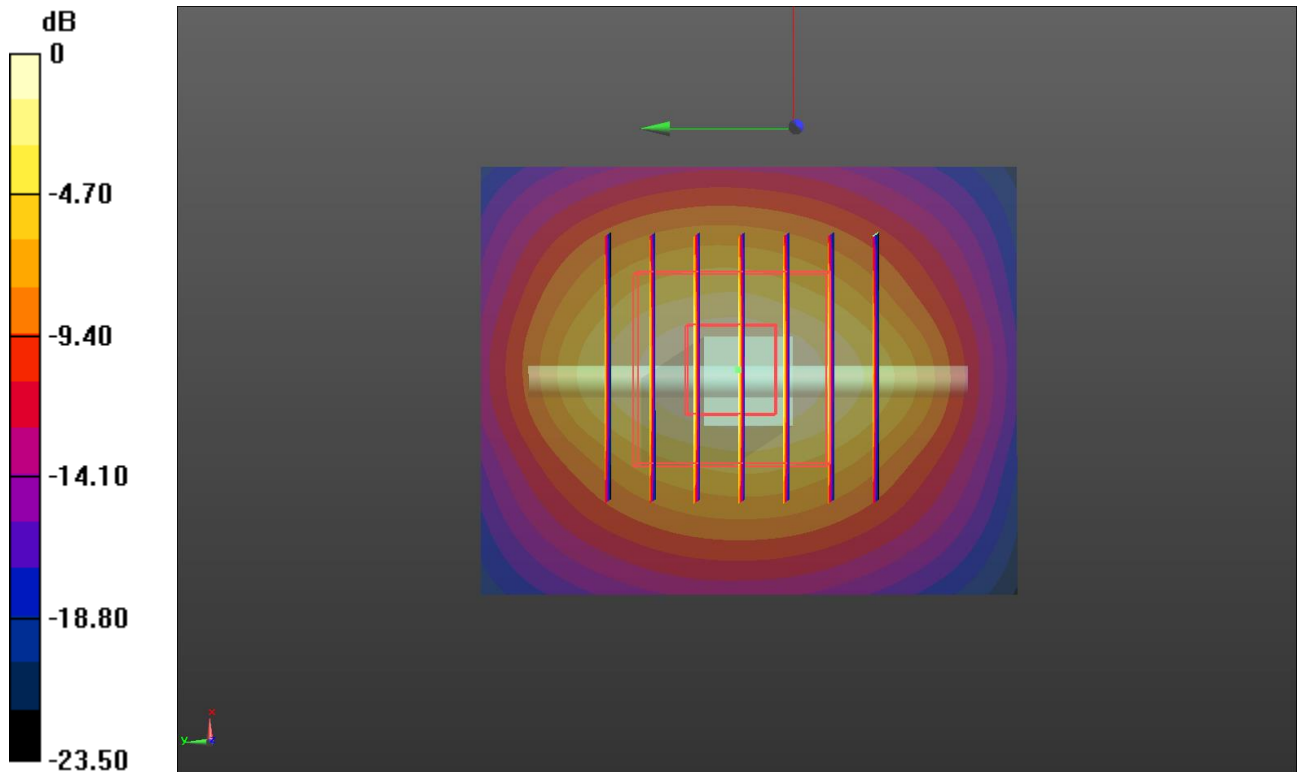
Head/d=10mm,Pin=250mW/Zoom Scan (7x7x7)/Cube 0: Measurement grid: dx=5mm, dy=5mm, dz=5mm

Reference Value = 115.7 V/m; Power Drift = -0.10 dB

Peak SAR (extrapolated) = 31.8 W/kg

SAR(1 g) = 14.6 W/kg; SAR(10 g) = 6.47 W/kg

Maximum value of SAR (measured) = 25.3 W/kg



0 dB = 25.3 W/kg = 14.03 dBW/kg

10. SAR Exposure Limits

SAR assessments have been made in line with the requirements of FCC 47 CFR § 2.1093.

Type Exposure	Limit (W/kg)	
	General Population/ Uncontrolled Exposure Environment	Occupational/ Controlled Exposure Environment
Spatial Average SAR (whole body)	0.08	0.4
Spatial Peak SAR (1g cube tissue for head and trunk)	1.6	8.0
Spatial Peak SAR (10g for limb)	4.0	20.0

Population/Uncontrolled Environments: are defined as locations where there is the exposure of individual who have no knowledge or control of their exposure.

Occupational/Controlled Environments: are defined as locations where there is exposure that may be incurred by people who are aware of the potential for exposure (i.e. as a result of employment or occupation).

11. Conducted Power Measurement Results

11.1. GSM

1. Per KDB 447498 D01, the maximum output power channel is used for SAR testing and further SAR test reduction.
2. Per KDB 941225 D01, considering the possibility of e.g. 3rd party VoIP operation for Head and Body-worn SAR test reduction for GSM and GPRS modes is determined by the source-base time-averaged output power including tune-up tolerance. The mode with highest specified time-averaged output power should be tested for SAR compliance in the applicable exposure conditions. For modes with the same specified maximum output power and tolerance, the higher number time-slot configuration should be tested.
3. Per KDB941225 D01, for hotspot SAR test reduction for GPRS modes is determined by the source-based time-averaged output power including tune-up tolerance, For modes with the same specified maximum output power and tolerance, the higher number time-slot configuration should be tested.

Mode: GSM850		Burst Average Power (dBm)			Division Factors	Frame-Average Power (dBm)		
		CH128	CH190	CH251		CH128	CH190	CH251
		824.2MHz	836.6MHz	848.8MHz		824.2MHz	836.6MHz	848.8MHz
GSM Voice		32.60	32.63	32.71	-9.03	23.57	23.60	23.68
GPRS (GMSK)	1TXslot	32.74	32.74	32.84	-9.03	23.71	23.71	23.81
	2TXslots	32.42	32.46	32.59	-6.02	26.40	26.44	26.57
	3TXslots	31.13	31.36	31.33	-4.26	26.87	27.10	27.07
	4TXslots	29.85	29.93	30.03	-3.01	26.84	26.92	27.02
EGPRS (8PSK)	1TXslot	27.76	27.95	27.95	-9.03	18.73	18.92	18.92
	2TXslots	25.79	26.07	26.09	-6.02	19.77	20.05	20.07
	3TXslots	23.63	24.06	24.97	-4.26	19.37	19.80	20.71
	4TXslots	23.83	24.14	23.93	-3.01	20.82	21.13	20.92
Mode: PCS1900		Burst Average Power (dBm)			Division Factors	Frame-Average Power (dBm)		
		CH512	CH661	CH810		CH512	CH661	CH810
		1850.2MHz	1880MHz	1909.8MHz		1850.2MHz	1880MHz	1909.8MHz
GSM Voice		30.98	30.99	30.87	-9.03	21.95	21.96	21.84
GPRS (GMSK)	1TXslot	30.89	30.88	30.74	-9.03	21.86	21.85	21.71
	2TXslots	30.33	30.24	30.08	-6.02	24.31	24.22	24.06
	3TXslots	28.51	28.50	28.25	-4.26	24.25	24.24	23.99
	4TXslots	26.77	26.74	26.80	-3.01	23.76	23.73	23.79
EGPRS (8PSK)	1TXslot	26.21	25.81	25.66	-9.03	17.18	16.78	16.63
	2TXslots	24.56	24.14	24.13	-6.02	18.54	18.12	18.11
	3TXslots	22.85	22.91	22.15	-4.26	18.59	18.65	17.89
	4TXslots	22.71	22.41	22.36	-3.01	19.70	19.40	19.35

Note:

1) Division Factors

To Frame-Average Power, the division factor is as follows:

1TX-slot = 1 transmit time slot out of 8 time slots=> Burst Average Power divided by (8/1) => -9.03dB

2TX-slots = 2 transmit time slots out of 8 time slots=> Burst Average Power divided by (8/2) => -6.02dB

3TX-slots = 3 transmit time slots out of 8 time slots=> Burst Average Power divided by (8/3) => -4.26dB

4TX-slots = 4 transmit time slots out of 8 time slots=> Burst Average Power divided by (8/4) => -3.01dB

11.2. WCDMA

1. The following tests were conducted according to the test requirements outlines in 3GPP TS34.121 specification.
2. The procedures in KDB 941225 D01 are applied for 3GPP Rel. 6 HSPA to configure the device in the required sub-test mode to determine SAR test exclusion

A summary of these settings are illustrated below:

HSDPA Setup Configuration:

- a) The EUT was connected to base station RS CMU200 referred to the setup configuration
- b) The RF path losses were compensated into the measurements
- c) A call was established between EUT and base station with following setting:
 - i. Set Gain Factors (β_c and β_d) and parameters were set according to each specific sub-test in the following table, C10.1.4, Quoted from the TS 34.121
 - ii. Set RMC 12.2Kbps + HSDPA mode
 - iii. Set Cell Power=-86dBm
 - iv. Set HS-DSCH Configuration Type to FRC (H-set 1, QPSK)
 - v. Select HSDPA uplink parameters
 - vi. Set Delta ACK, Delta NACK and Delta CQI=8
 - vii. Set Ack-Nack repetition Factor to 3
 - viii. Set CQI Feedback Cycle (K) to 4ms
 - ix. Set CQI repetition factor to 2
 - x. Power ctrl mode= all up bits
- d) The transmitter maximum output power was recorded.

Table C.10.1.4: β values for transmitter characteristics tests with HS-DPCCH

Sub-test	β_c	β_d	β_d (SF)	β_c/β_d	β_{HS} (Note 1, Note 2)	CM (dB) (Note 3)	MPR (dB) (Note 3)
1	2/15	15/15	64	2/15	4/15	0.0	0.0
2	12/15 (Note 4)	15/15 (Note 4)	64	12/15 (Note 4)	24/15	1.0	0.0
3	15/15	8/15	64	15/8	30/15	1.5	0.5
4	15/15	4/15	64	15/4	30/15	1.5	0.5

Note 1: Δ_{ACK} , Δ_{NACK} and $\Delta_{CQI} = 30/15$ with $\beta_{HS} = 30/15 * \beta_c$.

Note 2: For the HS-DPCCH power mask requirement test in clause 5.2C, 5.7A, and the Error Vector Magnitude (EVM) with HS-DPCCH test in clause 5.13.1A, and HSDPA EVM with phase discontinuity in clause 5.13.1AA, Δ_{ACK} and $\Delta_{NACK} = 30/15$ with $\beta_{HS} = 30/15 * \beta_c$, and $\Delta_{CQI} = 24/15$ with $\beta_{HS} = 24/15 * \beta_c$.

Note 3: CM = 1 for $\beta_c/\beta_d = 12/15$, $\beta_{HS}/\beta_c = 24/15$. For all other combinations of DPCCH, DPCCCH and HS-DPCCH the MPR is based on the relative CM difference. This is applicable for only UEs that support HSDPA in release 6 and later releases.

Note 4: For subtest 2 the β_c/β_d ratio of 12/15 for the TFC during the measurement period (TF1, TF0) is achieved by setting the signalled gain factors for the reference TFC (TF1, TF1) to $\beta_c = 11/15$ and $\beta_d = 15/15$.

Setup Configuration

HSUPA Setup Configuration:

- a) The EUT was connected to base station RS CMU200 referred to the setup configuration
- b) The RF path losses were compensated into the measurements
- c) A call was established between EUT and base station with following setting:
 - i. Call configs = 5.2b, 5.9b, 5.10b, and 5.13.2B with QPSK
 - ii. Set Gain Factors (β_c and β_d) and parameters (AG index) were set according to each specific sub-test in the following table, C11.1.3, Quoted from the TS 34.121
 - iii. Set Cell Power=-86dBm
 - iv. Set channel type= 12.2Kbps + HSPA mode
 - v. Set UE Target power
 - vi. Set Ctrl mode=Alternating bits
 - vii. Set and observe the E-TFCl
 - viii. Confirm that E-TFCl is equal the target E-TFCl of 75 for Sub-test 1, and other subtest's E-TFCl
- d) The transmitter maximum output power was recorded.

Table C.11.1.3: β values for transmitter characteristics tests with HS-DPCCH and E-DCH

Sub-test	β_c	β_d	β_d (SF)	β_c/β_d	β_{HS} (Note 1)	β_{ec}	β_{ed} (Note 5) (Note 6)	β_{ed} (SF)	β_{ed} (Codes)	CM (dB) (Note 2)	MPR (dB) (Note 2)	AG Index (Note 6)	E-TFCI
1	11/15 (Note 3)	15/15 (Note 3)	64	11/15 (Note 3)	22/15	209/25	1309/225	4	1	1.0	0.0	20	75
2	6/15	15/15	64	6/15	12/15	12/15	94/75	4	1	3.0	2.0	12	67
3	15/15	9/15	64	15/9	30/15	30/15	β_{ed1} : 47/15 β_{ed2} : 47/15	4 4	2	2.0	1.0	15	92
4	2/15	15/15	64	2/15	4/15	2/15	56/75	4	1	3.0	2.0	17	71
5	15/15 (Note 4)	15/15 (Note 4)	64	15/15 (Note 4)	30/15	24/15	134/15	4	1	1.0	0.0	21	81

Note 1: $\Delta_{ACK}, \Delta_{NACK}$ and $\Delta_{CQI} = 30/15$ with $\beta_{HS} = 30/15 * \beta_c$.

Note 2: CM = 1 for $\beta_c/\beta_d = 12/15, \beta_{HS}/\beta_c = 24/15$. For all other combinations of DPDCH, DPCCH, HS-DPCCH, E-DPDCH and E-DPCCH the MPR is based on the relative CM difference.

Note 3: For subtest 1 the β_c/β_d ratio of 11/15 for the TFC during the measurement period (TF1, TF0) is achieved by setting the signalled gain factors for the reference TFC (TF1, TF1) to $\beta_c = 10/15$ and $\beta_d = 15/15$.

Note 4: For subtest 5 the β_c/β_d ratio of 15/15 for the TFC during the measurement period (TF1, TF0) is achieved by setting the signalled gain factors for the reference TFC (TF1, TF1) to $\beta_c = 14/15$ and $\beta_d = 15/15$.

Note 5: In case of testing by UE using E-DPDCH Physical Layer category 1, Sub-test 3 is omitted according to TS25.306 Table 5.1g.

Note 6: β_{ed} can not be set directly, it is set by Absolute Grant Value.

Setup Configuration

General Note:

- Per KDB 941225 D01, SAR for Head / Hotspot / Body-worn Exposure is measured using a 12.2Kbps RMC with TPC bit configured to all 1s
- Per KDB 941225 D01 RMC 12.2Kbps setting is used to evaluate SAR. If the maximum output power and Tune-up tolerance specified for production units in HSDPA/HSUPA is $\leq 1/4$ dB higher than RMC 12.2Kbps or when the highest reported SAR of the RMC 12.2Kbps is scaled by the ratio of specified maximum output power and tune-up tolerance of HSDPA / HSUPA to RMC 12.2Kbps and the adjusted SAR is ≤ 1.2 W/kg, SAR measurement is not required for HSDPA / HSUPA.

Mode		WCDMA Band II			WCDMA Band IV		
		Conducted Power (dBm)			Conducted Power (dBm)		
		CH9262	CH9400	CH9538	CH1312	CH1413	CH1513
		1852.4MHz	1880MHz	1907.6MHz	1712.4MHz	1732.6MHz	1752.6MHz
AMR 12.2K		24.28	23.93	23.87	23.02	23.03	23.14
RMC 12.2K		24.32	23.97	23.91	23.05	23.06	23.17
HSDPA	Subtest-1	23.71	23.41	23.30	22.05	22.09	22.18
	Subtest-2	23.13	22.87	22.84	21.53	21.56	21.68
	Subtest-3	23.15	22.91	22.85	21.58	21.57	21.71
	Subtest-4	23.25	22.90	22.89	21.57	21.54	21.70
HSUPA	Subtest-1	22.11	22.13	22.21	19.59	20.12	20.27
	Subtest-2	21.48	21.61	21.51	20.59	20.58	20.73
	Subtest-3	20.92	21.56	20.46	21.13	21.07	21.24
	Subtest-4	21.33	21.99	21.29	20.07	20.13	20.25
	Subtest-5	22.61	22.48	22.19	22.05	22.07	22.22

Mode		WCDMA Band V		
		Conducted Power (dBm)		
		CH4132 826.4MHz	CH4183 836.6MHz	CH4233 846.6MHz
AMR 12.2K		23.46	23.42	23.58
RMC 12.2K		23.50	23.46	23.62
HSDPA	Subtest-1	22.44	22.41	22.59
	Subtest-2	21.97	21.96	22.09
	Subtest-3	21.98	21.99	22.11
	Subtest-4	21.97	22.02	22.09
HSUPA	Subtest-1	21.96	21.46	22.01
	Subtest-2	21.18	20.88	21.45
	Subtest-3	21.24	20.54	20.79
	Subtest-4	21.74	21.24	21.86
	Subtest-5	22.54	22.11	22.54

11.3. LTE

General Note:

1. CMW500 base station simulator was used to setup the connection with EUT; the frequency band, channel, bandwidth, RB allocation configuration, modulation type are set in the base station simulator to configure EUT transmitting at maximum power and at different configurations which are requested to be reported to FCC, for conducted power measurement and SAR testing.
2. Per KDB 941225 D05v02r03, when a properly configured base station simulator is used for the SAR and power measurements, spectrum plots for each RB allocation and offset configuration is not required.
3. Per KDB 941225 D05v02r03, start with the largest channel bandwidth and measure SAR for QPSK with 1 RB allocation, using the RB offset and required test channel combination with the highest maximum output power for RB offsets at the upper edge, middle and lower edge of each required test channel.
4. Per KDB 941225 D05v02r03, 50% RB allocation for QPSK SAR testing follows 1RB QPSK allocation procedure.
5. Per KDB 941225 D05v02r03, for QPSK with 100% RB allocation, SAR is not required when the highest maximum output power for 100 % RB allocation is less than the highest maximum output power in 50% and 1 RB allocations and the highest reported SAR for 1 RB and 50% RB allocation are ≤ 0.8 W/kg. Otherwise, SAR is measured for the highest output power channel; and if the reported SAR is > 1.45 W/kg, the remaining required test channels must also be tested.
6. Per KDB 941225 D05v02r03, 16QAM output power for each RB allocation configuration is $>$ not $\frac{1}{2}$ dB higher than the same configuration in QPSK and the reported SAR for the QPSK configuration is ≤ 1.45 W/kg; Per KDB 941225 D05v02r03, 16QAM SAR testing is not required.
7. Per KDB 941225 D05v02r03, smaller bandwidth output power for each RB allocation configuration is $>$ not $\frac{1}{2}$ dB higher than the same configuration in the largest supported bandwidth, and the reported SAR for the largest supported bandwidth is ≤ 1.45 W/kg; Per KDB 941225 D05v02r03, smaller bandwidth SAR testing is not required.

According to April 2015 TCB workshop, SAR test exclusion can be applied for testing overlapping LTE bands as follows:

- a) The maximum output power, including tolerance, for the smaller band must be \leq the larger band to qualify for the SAR test exclusion.
- b) The channel bandwidth and other operating parameters for the smaller band must be fully supported by the larger band.
 - LTE Band 2 (1850-1910 MHz) is covered by LTE Band 25 (1850-1915 MHz)
 - LTE Band 4 (1710-1755 MHz) is covered by LTE Band 66 (1710-1780 MHz)
 - LTE Band 5 (824-849 MHz) is covered by LTE Band 26 (814-849 MHz)
 - LTE Band 17 (704-716 MHz) is covered by LTE Band 12 (699-716 MHz)

LTE-FDD Band 2				Conducted Power(dBm)		
Band-width	Modulation	RB allocation	RB offset	18607	18900	19193
				1850.7MHz	1880MHz	1909.3MHz
1.4MHz	QPSK	1	0	21.61	21.56	21.52
			2	21.85	21.74	21.66
			5	21.55	21.55	21.49
		3	0	21.64	21.60	21.56
			1	21.65	21.59	21.59
			3	21.65	21.59	21.63
	6	0	20.71	20.62	20.55	
	16QAM	1	0	20.68	20.64	20.70
			2	20.88	20.83	20.82
			5	20.68	20.60	20.71
		3	0	20.54	20.48	20.51
			1	20.57	20.45	20.51
			3	20.55	20.45	20.53
		6	0	20.73	20.61	20.53
Band-width	Modulation	RB allocation	RB offset	18615	18900	19185
				1851.5MHz	1880MHz	1908.5MHz
3MHz	QPSK	1	0	21.67	21.67	21.60
			8	21.65	21.66	21.58
			14	21.63	21.67	21.54
		8	0	20.59	20.56	20.56
			4	20.60	20.56	20.56
			7	20.61	20.59	20.52
	15	0	20.59	20.54	20.54	
	16QAM	1	0	20.82	20.47	20.77
			8	20.72	20.52	20.72
			14	20.70	20.50	20.73
		8	0	20.64	20.59	20.67
			4	20.62	20.59	20.63
			7	20.63	20.64	20.62
		15	0	20.50	20.48	20.57

LTE-FDD Band 2				Conducted Power(dBm)		
Band-width	Modulation	RB allocation	RB offset	18625	18900	19175
				1852.5MHz	1880MHz	1907.5MHz
5MHz	QPSK	1	0	21.60	21.60	21.61
			12	21.70	21.73	21.67
			24	21.58	21.55	21.52
		12	0	20.58	20.56	20.58
			7	20.58	20.58	20.56
			13	20.56	20.53	20.49
	25	0	20.63	20.57	20.58	
	16QAM	1	0	20.77	20.52	20.54
			12	20.88	20.69	20.65
			24	20.70	20.54	20.56
		12	0	20.62	20.63	20.58
			7	20.62	20.60	20.63
			13	20.62	20.53	20.54
		25	0	20.60	20.56	20.61
Band-width		Modulation	RB allocation	RB offset	18650	18900
	1855MHz				1880MHz	1905MHz
10MHz	QPSK	1	0	21.63	21.64	21.59
			24	21.69	21.71	21.72
			49	21.62	21.58	21.57
		25	0	20.60	20.65	20.66
			24	20.64	20.64	20.63
			49	20.63	20.53	20.54
	50	0	20.62	20.62	20.58	
	16QAM	1	0	20.73	20.42	20.77
			24	20.83	20.59	20.87
			49	20.69	20.47	20.73
		25	0	20.66	20.65	20.63
			24	20.61	20.67	20.67
			49	20.64	20.58	20.50
		50	0	20.58	20.58	20.57

LTE-FDD Band 2				Conducted Power(dBm)		
Band-width	Modulation	RB allocation	RB offset	18675	18900	19125
				1857.5MHz	1880MHz	1902.5MHz
15MHz	QPSK	1	0	21.42	21.38	21.35
			38	21.51	21.48	21.56
			74	21.37	21.25	21.39
		38	0	20.52	20.62	20.46
			18	20.58	20.74	20.48
			37	20.52	20.52	20.86
	75	0	20.47	20.44	20.49	
	16QAM	1	0	20.54	20.59	20.77
			38	20.64	20.69	20.38
			74	20.49	20.53	20.42
		38	0	20.54	20.60	20.43
			18	20.64	20.71	20.48
			37	20.49	20.52	20.94
		75	0	20.45	20.48	21.11
Band-width		Modulation	RB allocation	RB offset	18700	18900
	1860MHz				1880MHz	1900MHz
20MHz	QPSK	1	0	21.39	21.32	21.05
			49	21.71	21.66	21.76
			99	21.32	21.07	21.32
		50	0	20.53	20.64	20.42
			25	20.56	20.62	20.40
			50	20.51	20.47	20.36
	100	0	20.53	20.53	20.40	
	16QAM	1	0	20.54	20.31	20.97
			49	20.84	20.63	20.62
			99	20.42	20.42	20.33
		50	0	20.52	20.66	20.37
			25	20.53	20.64	20.38
			50	20.51	20.48	20.37
		100	0	20.54	20.52	20.40

LTE-FDD Band 4				Conducted Power(dBm)		
Band-width	Modulation	RB allocation	RB offset	19957	20175	20393
				1710.7MHz	1732.5MHz	1754.3MHz
1.4MHz	QPSK	1	0	21.80	21.60	21.78
			2	21.95	21.75	21.83
			5	21.78	21.66	21.81
		3	0	21.84	21.69	21.78
			1	21.88	21.72	21.84
			3	21.90	21.74	21.85
	6	0	20.85	20.66	20.75	
	16QAM	1	0	20.66	20.73	20.88
			2	20.88	20.92	21.07
			5	20.71	20.76	20.88
		3	0	20.71	20.65	20.75
			1	20.74	20.65	20.73
			3	20.69	20.65	20.76
		6	0	20.86	20.80	20.67
Band-width		Modulation	RB allocation	RB offset	19965	20175
	1711.5MHz				1732.5MHz	1753.5MHz
3MHz	QPSK	1	0	21.87	21.81	21.81
			8	21.82	21.79	21.79
			14	21.85	21.79	21.83
		8	0	20.82	20.69	20.78
			4	20.83	20.71	20.74
			7	20.79	20.72	20.78
	15	0	20.80	20.68	20.80	
	16QAM	1	0	21.07	20.62	21.03
			8	20.98	20.68	21.00
			14	20.95	20.67	21.00
		8	0	20.89	20.78	20.84
			4	20.91	20.76	20.89
			7	20.85	20.76	20.89
		15	0	20.78	20.67	20.82

LTE-FDD Band 4				Conducted Power(dBm)		
Band-width	Modulation	RB allocation	RB offset	19975	20175	20375
				1712.5MHz	1732.5MHz	1752.5MHz
5MHz	QPSK	1	0	21.88	21.75	21.81
			12	21.94	21.84	21.92
			24	21.80	21.75	21.78
		12	0	20.85	20.70	20.76
			7	20.87	20.70	20.80
			13	20.76	20.63	20.77
	25	0	20.83	20.74	20.84	
	16QAM	1	0	21.08	20.67	20.81
			12	21.18	20.85	20.91
			24	21.02	20.71	20.83
		12	0	20.94	20.79	20.85
			7	20.96	20.80	20.85
			13	20.87	20.74	20.85
		25	0	20.89	20.77	20.88
Band-width		Modulation	RB allocation	RB offset	20000	20175
	1715MHz				1732.5MHz	1750MHz
10MHz	QPSK	1	0	21.85	21.49	21.61
			24	21.93	21.68	21.82
			49	21.74	21.46	21.66
		25	0	20.85	20.59	20.74
			24	20.83	20.58	20.75
			49	20.82	20.53	20.75
	50	0	20.88	20.55	20.73	
	16QAM	1	0	21.00	20.65	20.77
			24	21.04	20.89	20.99
			49	20.95	20.67	20.84
		25	0	20.91	20.65	20.79
			24	20.89	20.67	20.84
			49	20.89	20.62	20.83
		50	0	20.89	20.61	20.80

LTE-FDD Band 4				Conducted Power(dBm)		
Band-width	Modulation	RB allocation	RB offset	20025	20175	20325
				1717.5MHz	1732.5MHz	1747.5MHz
15MHz	QPSK	1	0	21.57	21.52	21.03
			38	21.66	21.63	21.72
			74	21.49	21.36	21.63
		38	0	20.90	20.80	20.48
			18	20.96	20.94	21.10
			37	20.77	20.68	21.03
	75	0	20.64	20.68	21.35	
	16QAM	1	0	20.93	20.83	20.51
			38	20.94	20.93	21.05
			74	20.75	20.68	21.03
		38	0	20.90	20.82	21.46
			18	20.96	20.97	21.01
			37	20.79	20.70	21.04
		75	0	20.69	20.71	21.28
Band-width		Modulation	RB allocation	RB offset	20050	20175
	1720MHz				1732.5MHz	1745MHz
20MHz	QPSK	1	0	21.60	21.44	21.47
			49	21.85	21.73	21.88
			99	21.45	21.07	21.71
		50	0	20.77	20.73	20.58
			25	20.78	20.75	20.55
			50	20.71	20.53	20.77
	100	0	20.77	20.65	20.68	
	16QAM	1	0	20.79	20.48	20.48
			49	21.10	20.84	20.87
			99	20.65	21.12	20.62
		50	0	20.87	20.81	20.62
			25	20.87	20.81	20.60
			50	20.71	20.64	20.82
		100	0	20.81	20.66	20.74

LTE-FDD Band 5				Conducted Power(dBm)		
Band-width	Modulation	RB allocation	RB offset	20407	20525	20643
				8.4.7MHz	836.5MHz	848.3MHz
1.4MHz	QPSK	1	0	22.63	22.37	22.31
			2	22.76	22.46	22.40
			5	22.64	22.45	22.30
		3	0	22.60	22.41	22.37
			1	22.63	22.41	22.37
			3	22.65	22.46	22.37
	6	0	21.63	21.40	21.37	
	16QAM	1	0	21.46	21.46	21.42
			2	21.57	21.63	21.60
			5	21.39	21.52	21.40
		3	0	21.46	21.32	21.27
			1	21.46	21.29	21.25
			3	21.39	21.33	21.25
		6	0	20.58	20.95	20.37
Band-width		Modulation	RB allocation	RB offset	20415	20525
	825.5MHz				836.5MHz	847.5MHz
3MHz	QPSK	1	0	22.65	22.41	22.37
			8	22.64	22.43	22.41
			14	22.63	22.50	22.40
		8	0	21.66	21.37	21.38
			4	21.67	21.36	21.40
			7	21.60	21.41	21.39
	15	0	21.61	21.39	21.35	
	16QAM	1	0	21.83	21.55	21.56
			8	21.74	21.52	21.50
			14	21.77	21.53	21.54
		8	0	20.67	20.35	20.40
			4	20.68	20.33	20.38
			7	20.59	20.41	20.36
		15	0	20.57	20.67	20.49

LTE-FDD Band 5				Conducted Power(dBm)		
Band-width	Modulation	RB allocation	RB offset	20425	20525	20625
				826.5MHz	836.5MHz	846.5MHz
5MHz	QPSK	1	0	22.63	22.45	22.42
			12	22.74	22.63	22.48
			24	22.55	22.53	22.35
		12	0	21.61	21.33	21.34
			7	21.62	21.32	21.38
			13	21.55	21.42	21.31
	25	0	21.58	21.44	21.37	
	16QAM	1	0	21.77	21.40	21.34
			12	21.85	21.56	21.47
			24	21.71	21.49	21.31
		12	0	20.61	20.37	20.33
			7	20.63	20.36	20.35
			13	20.55	20.44	20.44
		25	0	20.51	20.45	20.32
Band-width		Modulation	RB allocation	RB offset	20450	20525
	829MHz				836.5MHz	844MHz
10MHz	QPSK	1	0	22.62	22.45	22.56
			24	22.68	22.51	22.55
			49	22.49	22.68	22.38
		25	0	21.64	21.45	21.71
			24	21.65	21.43	21.69
			49	21.55	21.55	21.36
	50	0	21.58	21.50	21.52	
	16QAM	1	0	21.75	21.58	21.69
			24	21.90	21.70	21.70
			49	21.59	21.70	21.53
		25	0	20.60	20.40	20.62
			24	20.59	20.42	20.61
			49	20.51	20.53	20.49
		50	0	20.54	20.46	20.43

LTE-FDD Band 7				Conducted Power(dBm)		
Band-width	Modulation	RB allocation	RB offset	20775	21100	21425
				2502.5MHz	2535MHz	2567.5MHz
5MHz	QPSK	1	0	22.46	22.08	22.58
			12	22.38	22.15	22.64
			24	22.13	22.11	22.60
		12	0	21.37	21.07	21.57
			7	21.39	21.03	21.54
			13	21.22	21.07	21.53
	25	0	21.35	21.10	21.59	
	16QAM	1	0	21.42	21.22	21.53
			12	21.33	21.31	21.64
			24	21.12	21.26	21.53
		12	0	20.35	20.44	20.67
			7	20.37	20.55	20.63
			13	20.62	20.62	20.62
		25	0	20.36	20.68	20.64
Band-width		Modulation	RB allocation	RB offset	20800	21100
	2505MHz				2535MHz	2565MHz
10MHz	QPSK	1	0	22.47	22.12	22.58
			24	22.35	22.28	22.76
			49	22.08	22.18	22.61
		25	0	21.38	21.21	21.65
			24	21.36	21.20	21.64
			49	21.20	21.13	21.63
	50	0	21.31	21.19	21.63	
	16QAM	1	0	21.58	21.18	21.41
			24	21.41	21.33	21.61
			49	21.20	21.28	21.46
		25	0	20.31	20.65	20.73
			24	20.34	20.97	20.68
			49	20.97	20.90	20.68
		50	0	20.69	20.64	20.63

LTE-FDD Band 7				Conducted Power(dBm)		
Band-width	Modulation	RB allocation	RB offset	20825	21100	21375
				2507.5MHz	2535MHz	2562.5MHz
15MHz	QPSK	1	0	22.45	22.12	22.50
			38	22.12	22.18	22.63
			74	22.04	22.18	22.51
		38	0	21.64	20.97	21.62
			18	21.39	21.07	21.79
			37	21.28	21.02	21.64
	75	0	21.26	21.25	21.69	
	16QAM	1	0	21.61	20.98	21.60
			38	21.36	21.05	21.77
			74	21.26	21.00	21.66
		38	0	21.64	20.98	21.65
			18	21.39	21.07	21.80
			37	21.28	21.01	21.64
		75	0	20.44	20.44	20.62
Band-width		Modulation	RB allocation	RB offset	20850	21100
	2510MHz				2535MHz	2560MHz
20MHz	QPSK	1	0	22.35	21.93	22.00
			49	22.26	22.35	22.88
			99	22.05	21.99	22.46
		50	0	21.22	21.25	21.50
			25	21.25	21.24	21.51
			50	21.25	21.15	21.60
	100	0	21.23	21.21	21.59	
	16QAM	1	0	21.44	20.95	20.96
			49	21.39	21.32	21.85
			99	21.16	21.03	21.41
		50	0	20.60	20.30	20.53
			25	20.61	20.77	20.53
			50	20.32	20.61	20.63
		100	0	20.64	20.99	20.59

LTE-FDD Band 12				Conducted Power(dBm)		
Band-width	Modulation	RB allocation	RB offset	23017	23095	23173
				699.7MHz	707.5MHz	715.3MHz
1.4MHz	QPSK	1	0	24.22	24.02	23.95
			2	24.50	24.21	24.03
			5	24.19	24.09	23.96
		3	0	24.29	24.07	23.96
			1	24.27	24.05	23.96
			3	24.23	24.12	23.99
	6	0	23.30	23.10	23.01	
	16QAM	1	0	23.26	23.11	22.99
			2	23.43	23.35	23.20
			5	23.25	23.17	23.05
		3	0	23.18	22.95	22.86
			1	23.18	22.96	22.85
			3	23.13	22.98	22.87
		6	0	22.27	21.96	21.83
Band-width		Modulation	RB allocation	RB offset	23025	23095
	700.5MHz				707.5MHz	714.5MHz
3MHz	QPSK	1	0	23.77	23.55	23.46
			8	23.73	23.57	23.45
			14	23.74	23.67	23.43
		8	0	22.67	22.46	22.46
			4	22.70	22.48	22.48
			7	22.67	22.57	22.43
	15	0	22.62	22.54	22.41	
	16QAM	1	0	22.66	22.66	22.58
			8	22.57	22.69	22.53
			14	22.57	22.76	22.48
		8	0	21.69	21.49	21.40
			4	21.68	21.48	21.40
			7	21.64	21.54	21.36
		15	0	21.52	21.48	21.28

LTE-FDD Band 12				Conducted Power(dBm)			
Band-width	Modulation	RB allocation	RB offset	23035	23095	23155	
				701.5MHz	707.5MHz	713.5MHz	
5MHz	QPSK	1	0	23.71	23.49	23.68	
			12	23.72	23.60	23.55	
			24	23.54	23.64	23.42	
		12	0	22.59	22.42	22.46	
			7	22.55	22.44	22.48	
			13	22.45	22.64	22.31	
	16QAM	1	0	22.65	22.64	22.60	
			12	22.68	22.76	22.52	
			24	22.49	22.80	22.38	
		12	0	21.53	21.42	21.49	
			7	21.50	21.42	21.46	
			13	21.43	21.63	21.30	
25	0	21.50	21.48	21.40			
Band-width	Modulation	RB allocation	RB offset	23060	23095	23130	
				704MHz	707.5MHz	711MHz	
10MHz	QPSK	1	0	23.69	23.64	23.45	
			24	23.71	23.72	23.90	
			49	23.59	23.67	23.43	
		25	0	22.77	22.64	22.51	
			24	22.76	22.65	22.52	
			49	22.63	22.83	22.40	
		50	0	22.67	22.70	22.37	
		16QAM	1	0	22.81	22.47	22.62
				24	22.81	22.56	23.01
	49			22.68	22.50	22.58	
	25		0	21.70	21.64	21.45	
			24	21.71	21.65	21.46	
			49	21.59	21.82	21.37	
	50		0	21.65	21.68	21.36	

LTE-FDD Band 17				Conducted Power(dBm)		
Band-width	Modulation	RB allocation	RB offset	23755	23790	23825
				706.5MHz	710MHz	713.5MHz
5MHz	QPSK	1	0	22.86	22.98	22.96
			12	23.00	23.07	22.85
			24	22.94	23.04	22.86
		12	0	21.88	21.79	21.99
			7	21.86	21.81	21.36
			13	21.95	21.98	21.63
	25	0	21.95	21.93	21.33	
	16QAM	1	0	21.97	21.88	21.83
			12	22.16	21.94	21.83
			24	22.08	21.98	21.79
		12	0	20.94	20.84	21.02
			7	20.90	20.85	20.33
			13	21.01	21.07	20.63
		25	0	20.93	20.97	20.69
Band-width		Modulation	RB allocation	RB offset	23780	23790
	709MHz				710MHz	711MHz
10MHz	QPSK	1	0	22.85	22.94	22.91
			24	23.08	23.08	23.19
			49	22.91	22.95	22.91
		25	0	21.88	21.82	21.85
			24	21.90	21.80	21.84
			49	22.08	22.00	21.90
	50	0	21.95	21.87	21.86	
	16QAM	1	0	21.94	21.75	22.06
			24	22.18	21.93	22.35
			49	22.03	21.77	22.04
		25	0	20.92	20.92	20.87
			24	20.95	20.88	20.85
			49	21.11	21.02	20.91
		50	0	21.00	20.95	20.86

LTE (TDD) Considerations

According to KDB 941225 D05 SAR for LTE Devices, for Time-Division Duplex (TDD) systems, SAR must be tested using a fixed periodic duty factor according to the highest transmission duty factor implemented for the device and supported by the defined 3GPP LTE TDD configurations.

SAR was tested with the highest transmission duty factor (63.33%) using Uplink-downlink configuration 0 and Special subframe configuration 7.

LTE TDD Bands support 3GPP TS 36.211 section 4.2 for Type 2 Frame Structure and Table 4.2-2 for uplinkdownlink configurations and Table 4.2-1 for Special subframe configurations.

Table 4.2-1: Configuration of special subframe (lengths of DwPTS/GP/UpPTS)

Special subframe configuration	Normal cyclic prefix in downlink			Extended cyclic prefix in downlink		
	DwPTS	UpPTS		DwPTS	UpPTS	
		Normal cyclic prefix in uplink	Extended cyclic prefix in uplink		Normal cyclic prefix in uplink	Extended cyclic prefix in uplink
0	$6592 \cdot T_s$	$(1+X) \cdot 2192 \cdot T_s$	$(1+X) \cdot 2560 \cdot T_s$	$7680 \cdot T_s$	$(1+X) \cdot 2192 \cdot T_s$	$(1+X) \cdot 2560 \cdot T_s$
1	$19760 \cdot T_s$			$20480 \cdot T_s$		
2	$21952 \cdot T_s$			$23040 \cdot T_s$		
3	$24144 \cdot T_s$			$25600 \cdot T_s$		
4	$26336 \cdot T_s$			$7680 \cdot T_s$		
5	$6592 \cdot T_s$	$(2+X) \cdot 2192 \cdot T_s$	$(2+X) \cdot 2560 \cdot T_s$	$20480 \cdot T_s$	$(2+X) \cdot 2192 \cdot T_s$	$(2+X) \cdot 2560 \cdot T_s$
6	$19760 \cdot T_s$			$23040 \cdot T_s$		
7	$21952 \cdot T_s$			$12800 \cdot T_s$		
8	$24144 \cdot T_s$			-		
9	$13168 \cdot T_s$			-		
10	$13168 \cdot T_s$	$13152 \cdot T_s$	$12800 \cdot T_s$	-	-	-

Table 4.2-2: Uplink-downlink configurations

Uplink-downlink configuration	Downlink-to-Uplink Switch-point periodicity	Subframe number									
		0	1	2	3	4	5	6	7	8	9
0	5 ms	D	S	U	U	U	D	S	U	U	U
1	5 ms	D	S	U	U	D	D	S	U	U	D
2	5 ms	D	S	U	D	D	D	S	U	D	D
3	10 ms	D	S	U	U	U	D	D	D	D	D
4	10 ms	D	S	U	U	D	D	D	D	D	D
5	10 ms	D	S	U	D	D	D	D	D	D	D
6	5 ms	D	S	U	U	U	D	S	U	U	D

Calculated Duty Cycle = Extended cyclic prefix in uplink x (Ts) x # of S + # of U

Example for Calculated Duty Cycle for Uplink-Downlink Configuration 0:

Calculated Duty Cycle = $5120 \times [1/(15000 \times 2048)] \times 2 + 6 \text{ ms} = 63.33\%$

where

$T_s = 1/(15000 \times 2048)$ seconds

This device supports uplink-downlink configurations 0-6. The configuration with highest duty cycle was used-configuration 0 at 63.3% duty cycle.

LTE-TDD Band 41				Conducted Power(dBm)		
Band-width	Modulation	RB allocation	RB offset	40265	40740	41215
				2557.5MHz	2605MHz	2652.5MHz
5MHz	QPSK	1	0	20.74	20.93	20.66
			12	20.94	20.63	20.63
			24	21.07	20.73	20.77
		12	0	20.98	20.56	20.65
			7	20.66	20.68	20.75
			13	20.93	20.74	20.77
	25	0	20.88	20.64	20.70	
	16QAM	1	0	20.73	20.99	20.62
			12	20.40	20.69	20.68
			24	20.34	20.77	20.79
		12	0	20.63	20.66	20.71
			7	20.67	20.70	20.71
			13	20.66	20.71	20.70
		25	0	20.69	20.57	20.66
Band-width		Modulation	RB allocation	RB offset	40290	40740
	2560MHz				2605MHz	2650MHz
10MHz	QPSK	1	0	20.71	20.52	20.68
			24	21.05	20.75	20.55
			49	21.31	20.93	20.92
		25	0	21.06	20.67	20.70
			24	20.80	20.73	20.71
			49	20.93	20.73	20.72
	50	0	20.56	20.62	20.70	
	16QAM	1	0	20.71	21.01	20.59
			24	20.44	20.66	20.83
			49	20.42	20.87	20.64
		25	0	21.52	21.60	21.69
			24	21.11	21.68	21.67
			49	21.00	21.52	21.63
		50	0	21.06	20.60	20.66

LTE-TDD Band 41				Conducted Power(dBm)		
Band-width	Modulation	RB allocation	RB offset	40315	40740	41165
				2562.5MHz	2605MHz	2647.5MHz
15MHz	QPSK	1	0	20.63	20.93	20.65
			38	20.93	20.57	20.65
			74	21.05	20.70	20.66
		38	0	20.86	20.51	20.58
			18	20.44	20.58	20.59
			37	20.44	20.63	20.88
	75	0	20.90	20.45	20.83	
	16QAM	1	0	20.64	20.96	20.63
			38	20.64	20.66	20.57
			74	20.86	20.62	20.89
		38	0	20.89	20.47	20.82
			18	20.95	20.52	20.58
			37	20.86	20.63	20.88
		75	0	20.93	20.47	20.82
Band-width		Modulation	RB allocation	RB offset	40340	40740
	2565MHz				2605MHz	2645MHz
20MHz	QPSK	1	0	20.57	20.74	20.87
			49	20.44	20.89	20.87
			99	20.70	21.01	20.67
		50	0	20.47	21.17	20.87
			25	20.47	21.02	20.58
			50	20.36	20.78	20.60
	100	0	21.17	20.89	20.77	
	16QAM	1	0	20.65	20.86	20.82
			49	20.60	20.81	20.44
			99	20.99	20.69	20.35
		50	0	20.43	21.07	20.88
			25	20.68	20.79	20.53
			50	20.68	20.31	20.59
		100	0	21.11	20.83	20.68

11.4. WiFi

For 2.4GHz WiFi SAR testing, highest average RF output power channel for the lowest data rate for 802.11b were for SAR evaluation.

The maximum output power specified for production units are determined for all applicable 802.11 transmission modes in each standalone and aggregated frequency band. Maximum output power is measured for the highest maximum output power configuration(s) in each frequency band according to the default power measurement procedures.

SAR testing is not required for OFDM mode(s) when the highest reported SAR for DSSS is adjusted by the ratio of OFDM to DSSS specified maximum output power and the adjusted SAR is ≤ 1.2 W/kg.

WiFi 2.4G				
Mode	Channel	Frequency (MHz)	Conducted Peak Power (dBm)	Conducted Average Power (dBm)
802.11b	1	2412	17.67	15.51
	6	2437	18.20	16.06
	11	2462	17.82	15.66
802.11g	1	2412	18.80	15.19
	6	2437	21.22	17.16
	11	2462	21.11	17.52
802.11n (HT20)	1	2412	18.62	15.57
	6	2437	21.17	17.41
	11	2462	21.07	17.51
802.11n (HT40)	3	2422	20.40	16.17
	6	2437	21.52	17.62
	9	2452	20.37	16.03

11.5. Bluetooth

Bluetooth				
Mode	Channel	Frequency (MHz)	Conducted Peak Power (dBm)	Conducted Average Power (dBm)
GFSK	0	2402	2.58	2.53
	39	2441	5.29	5.21
	78	2480	2.72	2.66
$\pi/4$ QPSK	0	2402	2.11	1.61
	39	2441	4.75	4.24
	78	2480	2.12	1.58
8DPSK	0	2402	2.16	1.61
	39	2441	4.81	4.29
	78	2480	2.19	1.63
GFSK(BLE)	0	2402	2.52	2.51
	19	2440	5.66	5.64
	39	2480	2.65	2.63

12. Maximum Tune-up Limit

GSM		
Mode	Maximum Tune-up (dBm)	
	GSM850	PCS1900
GSM (GMSK, 1Tx Slot)	33.00	31.00
GPRS (GMSK, 1Tx Slot)	33.00	31.00
GPRS (GMSK, 2Tx Slots)	33.00	30.50
GPRS (GMSK, 3Tx Slots)	31.50	29.00
GPRS (GMSK, 4Tx Slots)	30.50	27.00
EGPRS (8PSK, 1Tx Slot)	28.00	26.50
EGPRS (8PSK, 2Tx Slots)	26.50	25.00
EGPRS (8PSK, 3Tx Slots)	25.00	23.00
EGPRS (8PSK, 4Tx Slots)	24.50	23.00

WCDMA			
Mode	Maximum Tune-up (dBm)		
	FDD Band II	FDD Band IV	FDD Band V
AMR 12.2Kbps	24.50	23.50	24.00
RMC 12.2Kbps	24.50	23.50	24.00
HSDPA Subtest-1	24.00	22.50	23.00
HSDPA Subtest-2	23.50	22.00	22.50
HSDPA Subtest-3	23.50	22.00	22.50
HSDPA Subtest-4	23.50	22.00	22.50
HSUPA Subtest-1	22.50	20.50	22.50
HSUPA Subtest-2	22.00	21.00	21.50
HSUPA Subtest-3	22.00	21.50	21.50
HSUPA Subtest-4	22.00	20.50	22.00
HSUPA Subtest-5	23.00	22.50	23.00

LTE				
Fequency Band	Band-width(MHz)	Modulation	RB allocation	Maximum Tune-up (dBm)
FDD Band 2	1.4	QPSK	1	22.00
			3	22.00
			6	21.00
		16QAM	1	21.00
			3	21.00
			6	21.00
	3	QPSK	1	22.00
			8	21.00
			15	21.00
		16QAM	1	21.00
			8	21.00
			15	21.00
	5	QPSK	1	22.00
			12	21.00
			25	21.00
		16QAM	1	21.00
			12	21.00
			25	21.00
	10	QPSK	1	22.00
			25	21.00
			50	21.00
		16QAM	1	21.00
			25	21.00
			50	21.00
15	QPSK	1	22.00	
		38	21.00	
		75	20.50	
	16QAM	1	21.00	
		38	21.00	
		75	21.50	
20	QPSK	1	22.00	
		50	21.00	
		100	21.00	
	16QAM	1	21.00	
		50	21.00	
		100	21.00	

LTE				
Fequency Band	Band-width(MHz)	Modulation	RB allocation	Maximum Tune-up (dBm)
FDD Band 4	1.4	QPSK	1	22.00
			3	22.00
			6	21.00
		16QAM	1	21.50
			3	21.00
			6	21.00
	3	QPSK	1	22.00
			8	21.00
			15	21.00
		16QAM	1	21.50
			8	21.00
			15	21.00
	5	QPSK	1	22.00
			12	21.00
			25	21.00
		16QAM	1	21.50
			12	21.00
			25	21.00
	10	QPSK	1	22.00
			25	21.00
			50	21.00
		16QAM	1	21.50
			25	21.00
			50	21.00
	15	QPSK	1	22.00
			38	21.50
			75	21.50
		16QAM	1	21.50
			38	21.50
			75	21.50
20	QPSK	1	22.00	
		50	21.00	
		100	21.00	
	16QAM	1	21.50	
		50	21.00	
		100	21.00	

LTE				
Frequency Band	Band-width(MHz)	Modulation	RB allocation	Maximum Tune-up (dBm)
FDD Band 5	1.4	QPSK	1	23.00
			3	23.00
			6	22.00
		16QAM	1	22.00
			3	21.50
			6	21.00
	3	QPSK	1	23.00
			8	22.00
			15	22.00
		16QAM	1	22.00
			8	21.00
			15	21.00
	5	QPSK	1	23.00
			12	22.00
			25	22.00
		16QAM	1	22.00
			12	21.00
			25	21.00
	10	QPSK	1	23.00
			25	22.00
			50	22.00
16QAM		1	22.00	
		25	21.00	
		50	21.00	

LTE				
Frequency Band	Band-width(MHz)	Modulation	RB allocation	Maximum Tune-up (dBm)
FDD Band 7	5	QPSK	1	23.00
			12	22.00
			25	22.00
		16QAM	1	22.00
			12	21.00
			25	21.00
	10	QPSK	1	23.00
			25	22.00
			50	22.00
		16QAM	1	22.00
			25	21.00
			50	21.00
	15	QPSK	1	23.00
			38	22.00
			75	22.00
		16QAM	1	22.00
			38	22.00
			75	21.00
	20	QPSK	1	23.00
			50	22.00
			100	22.00
16QAM		1	22.00	
		50	21.00	
		100	21.00	

LTE				
Fequency Band	Band-width(MHz)	Modulation	RB allocation	Maximum Tune-up (dBm)
FDD Band 12	1.4	QPSK	1	24.50
			3	24.50
			6	23.50
		16QAM	1	23.50
			3	23.50
			6	22.50
	3	QPSK	1	24.00
			8	23.00
			15	23.00
		16QAM	1	23.00
			8	22.00
			15	22.00
	5	QPSK	1	24.00
			12	23.00
			25	23.00
		16QAM	1	23.00
			12	22.00
			25	21.50
	10	QPSK	1	24.00
			25	23.00
			50	23.00
16QAM		1	23.50	
		25	22.00	
		50	22.00	

LTE				
Fequency Band	Band-width(MHz)	Modulation	RB allocation	Maximum Tune-up (dBm)
FDD Band 17	5	QPSK	1	23.50
			12	22.00
			25	22.00
		16QAM	1	22.50
			12	21.50
			25	21.00
	10	QPSK	1	23.50
			25	22.50
			50	22.00
		16QAM	1	22.50
			25	21.50
			50	21.00

LTE				
Fequency Band	Band-width(MHz)	Modulation	RB allocation	Maximum Tune-up (dBm)
TDD Band 41	5	QPSK	1	21.50
			12	21.00
			25	21.00
		16QAM	1	21.00
			12	21.00
			25	21.00
	10	QPSK	1	21.50
			25	21.50
			50	21.00
		16QAM	1	21.50
			25	22.00
			50	21.50
	15	QPSK	1	21.50
			38	21.00
			75	21.00
		16QAM	1	21.00
			38	21.00
			75	21.00
	20	QPSK	1	21.50
			50	21.50
100			21.50	
16QAM		1	21.00	
		50	21.50	
		100	21.50	

The allowed Maximum Power Reduction (MPR) for the maximum output power in Table 6.2.2-1 due to higher order modulation and transmit bandwidth configuration (resource blocks) is specified in Table 6.2.3-1.

Table 6.2.3-1: Maximum Power Reduction (MPR) for Power Class 1, 2 and 3

Modulation	Channel bandwidth / Transmission bandwidth (N _{RB})						MPR (dB)
	1.4 MHz	3.0 MHz	5 MHz	10 MHz	15 MHz	20 MHz	
QPSK	> 5	> 4	> 8	> 12	> 16	> 18	≤ 1
16 QAM	≤ 5	≤ 4	≤ 8	≤ 12	≤ 16	≤ 18	≤ 1
16 QAM	> 5	> 4	> 8	> 12	> 16	> 18	≤ 2
64 QAM	≤ 5	≤ 4	≤ 8	≤ 12	≤ 16	≤ 18	≤ 2
64 QAM	> 5	> 4	> 8	> 12	> 16	> 18	≤ 3
256 QAM	≥ 1						≤ 5

WiFi 2.4G	
Mode	Maximum Tune-up (dBm) Conducted Average Power
802.11b	16.50
802.11g	18.00
802.11n(HT20)	18.00
802.11n(HT40)	18.00

Bluetooth	
Mode	Maximum Tune-up (dBm) Conducted Average Power
GFSK	5.50
$\pi/4$ QPSK	4.50
8DPSK	4.50
GFSK(BLE)	6.00

Per KDB 447498 D01, the 1-g and 10-g SAR test exclusion thresholds for 100MHz to 6GHz at test separation distances ≤ 50 mm are determined by:

$$[(\text{max. Power of channel, including tune-up tolerance, mW}) / (\text{min. test separation distance, mm})] * [\sqrt{f(\text{GHz})}] \leq 3.0 \text{ for 1-g SAR}$$

Band/Mode	F(GHz)	Position	Separation Distance (mm)	Exclusion Thresholds	SAR test exclusion
Bluetooth	2.45	Head	25	0.2	Yes
		Body	10	0.6	Yes

Per KDB 447498 D01, when the minimum test separation distance is <5mm, a distance of 5mm is applied to determine SAR test exclusion.

The test exclusion threshold is ≤ 3 , SAR testing is not required.

13. Measured and Reported SAR Results

SAR Test Reduction criteria are as follows:

- Reported SAR(W/kg) for WWAN = Measured SAR *Tune-up Scaling Factor
- Reported SAR(W/kg) for Wi-Fi and Bluetooth = Measured SAR * Tune-up scaling factor * Duty Cycle scaling factor
- Duty Cycle scaling factor = 1 / Duty cycle (%)

KDB 447498 D01 General RF Exposure Guidance:

Testing of other required channels within the operating mode of a frequency band is not required when the reported 1-g or 10-g SAR for the mid-band or highest output power channel is:

- ≤ 0.8 W/kg or 2.0 W/kg, for 1-g or 10-g respectively, when the transmission band is ≤ 100 MHz
- ≤ 0.6 W/kg or 1.5 W/kg, for 1-g or 10-g respectively, when the transmission band is between 100 MHz and 200 MHz
- ≤ 0.4 W/kg or 1.0 W/kg, for 1-g or 10-g respectively, when the transmission band is ≥ 200 MHz

KDB 941225 D01 SAR test for 3G SAR Test Reduction Procedure:

When the maximum output power and tune-up tolerance specified for production units in a secondary mode is $\leq \frac{1}{4}$ dB higher than the primary mode or when the highest reported SAR of the primary mode is scaled by the ratio of specified maximum output power and tune-up tolerance of secondary to primary mode and the adjusted SAR is ≤ 1.2 W/kg, SAR measurement is not required for the secondary mode.

GSM Guidance

SAR test reduction for GPRS and EDGE modes is determined by the source-based time-averaged output power specified for production units, including tune-up tolerance. The data mode with highest specified time-averaged output power should be tested for SAR compliance in the applicable exposure conditions. For modes with the same specified maximum output power and tolerance, the higher number time-slot configuration should be tested. Please refer to section 9. for GSM power verification.

SAR is not required for EDGE (8PSK) mode because the maximum output power and tune-up limit is $\leq 1/4$ dB higher than GPRS/EDGE (GMSK) or the adjusted SAR of the highest reported SAR of GPRS/EDGE (GMSK) is ≤ 1.2 W/kg.

W-CDMA Guidance

SAR for next to the ear head exposure is measured using a 12.2 kbps RMC with TPC bits configured to all "1's". The 3G SAR test reduction procedure is applied to AMR configurations with 12.2 kbps RMC (Head) and other spreading codes and multiple DPDCHn configurations supported by the handset with 12.2 kbps RMC (Body-Worn Accessory) as the primary mode.

SAR measurement is not required for the HSDPA, HSUPA, DC-HSDPA and HSPA+. When primary mode and the adjusted SAR is ≤ 1.2 W/kg and secondary mode is $\leq \frac{1}{4}$ dB higher than the primary mode

KDB 941225 D05 SAR for LTE Devices:

SAR test reduction is applied using the following criteria:

- Start with the largest channel bandwidth and measure SAR for QPSK with 1 RB, and 50% RB allocation, using the RB offset and required test channel combination with the highest maximum output power among RB offsets at the upper edge, middle and lower edge of each required test channel.
- When the reported SAR is > 0.8 W/kg, testing for other Channels is performed at the highest output power level for 1RB, and 50% RB configuration for that channel.
- Testing for 100% RB configuration is performed at the highest output power level for 100% RB configuration across the Low, Mid and High Channel when the highest reported SAR for 1 RB and 50% RB are > 0.8 W/kg. Testing for the remaining required channels is not needed because the reported SAR for 100% RB Allocation < 1.45 W/kg.
- Testing for 16-QAM and 64-QAM modulation is not required because the reported SAR for QPSK is < 1.45 W/Kg and its output power is not more than 0.5 dB higher than that of QPSK.

- Testing for the other channel bandwidths is not required because the reported SAR for the highest channel bandwidth is < 1.45 W/Kg and its output power is not more than 0.5 dB higher than that of the highest channel bandwidth.

KDB 248227 D01 SAR meas for 802.11:

When 802.11 frame gaps are accounted for in the transmission, a maximum transmission duty factor of 92 - 96% is typically achievable in most test mode configurations. A minimum transmission duty factor of 85% is required to avoid certain hardware and device implementation issues related to wide range SAR scaling. The reported SAR must be scaled to 100% transmission duty factor to determine compliance at the maximum tune-up tolerance limit.

SAR test reduction for 802.11 Wi-Fi transmission mode configurations are considered separately for DSSS and OFDM. An initial test position is determined to reduce the number of tests required for certain exposure configurations with multiple test positions. An initial test configuration is determined for each frequency band and aggregated band according to maximum output power, channel bandwidth, wireless mode configurations and other operating parameters to streamline the measurement requirements. For 2.4 GHz DSSS, either the initial test position or DSSS procedure is applied to reduce the number of SAR tests; these are mutually exclusive. For OFDM, an initial test position is only applicable to next to the ear, UMPC mini-tablet and hotspot mode configurations, which is tested using the initial test configuration to facilitate test reduction. For other exposure conditions with a fixed test position, SAR test reduction is determined using only the initial test configuration.

The multiple test positions require SAR measurements in head, hotspot mode or UMPC mini-tablet configurations may be reduced according to the highest reported SAR determined using the initial test position(s) by applying the DSSS or OFDM SAR measurement procedures in the required wireless mode test configuration(s). The initial test position(s) is measured using the highest measured maximum output power channel in the required wireless mode test configuration(s). When the reported SAR for the initial test position is:

- ≤ 0.4 W/kg, further SAR measurement is not required for the other test positions in that exposure configuration and wireless mode combination within the frequency band or aggregated band. DSSS and OFDM configurations are considered separately according to the required SAR procedures.
- > 0.4 W/kg, SAR is repeated using the same wireless mode test configuration tested in the initial test position to measure the subsequent next closet/smallest test separation distance and maximum coupling test position, on the highest maximum output power channel, until the reported SAR is ≤ 0.8 W/kg or all required test positions are tested.
 - For subsequent test positions with equivalent test separation distance or when exposure is dominated by coupling conditions, the position for maximum coupling condition should be tested.
 - When it is unclear, all equivalent conditions must be tested.
- For all positions/configurations tested using the initial test position and subsequent test positions, when the reported SAR is > 0.8 W/kg, measure the SAR for these positions/configurations on the subsequent next highest measured output power channel(s) until the reported SAR is ≤ 1.2 W/kg or all required test channels are considered.
 - The additional power measurements required for this step should be limited to those necessary for identifying subsequent highest output power channels to apply the test reduction.
- When the specified maximum output power is the same for both UNII 1 and UNII 2A, begin SAR measurements in UNII 2A with the channel with the highest measured output power. If the reported SAR for UNII 2A is ≤ 1.2 W/kg, SAR is not required for UNII 1; otherwise treat the remaining bands separately and test them independently for SAR.
- When the specified maximum output power is different between UNII 1 and UNII 2A, begin SAR with the band that has the higher specified maximum output. If the highest reported SAR for the band with the highest specified power is ≤ 1.2 W/kg, testing for the band with the lower specified output power is not required; otherwise test the remaining bands independently for SAR.

To determine the initial test position, Area Scans were performed to determine the position with the Maximum Value of SAR (measured). The position that produced the highest Maximum Value of SAR is considered the worst case position; thus used as the initial test position.

13.1. Head SAR

GSM850										
Mode	Test Position	Frequency		Conducted Power (dBm)	Tune up limit (dBm)	Tune up scaling factor	Power Drift (dB)	Measured SAR(1g) (W/kg)	Report SAR(1g) (W/kg)	Plot No.
		CH	MHz							
GPRS (4Tx slots)	Front	128	824.2	29.85	30.50	1.161	-	-	-	-
		190	836.6	29.93	30.50	1.140	-	-	-	-
		251	848.8	30.03	30.50	1.114	0.01	0.215	0.240	1

PCS1900										
Mode	Test Position	Frequency		Conducted Power (dBm)	Tune up limit (dBm)	Tune up scaling factor	Power Drift (dB)	Measured SAR(1g) (W/kg)	Report SAR(1g) (W/kg)	Plot No.
		CH	MHz							
GPRS (3Tx slots)	Front	512	1850.2	28.51	29.00	1.119	0.14	0.036	0.040	2
		661	1880	28.50	29.00	1.122	-	-	-	-
		810	1909.8	28.25	29.00	1.189	-	-	-	-

WCDMA Band II										
Mode	Test Position	Frequency		Conducted Power (dBm)	Tune up limit (dBm)	Tune up scaling factor	Power Drift (dB)	Measured SAR(1g) (W/kg)	Report SAR(1g) (W/kg)	Plot No.
		CH	MHz							
RMC 12.2K	Front	9262	1852.4	24.32	24.50	1.042	-0.12	0.008	0.008	3
		9400	1880	23.97	24.50	1.130	-	-	-	-
		9538	1907.6	23.91	24.50	1.146	-	-	-	-

WCDMA Band IV										
Mode	Test Position	Frequency		Conducted Power (dBm)	Tune up limit (dBm)	Tune up scaling factor	Power Drift (dB)	Measured SAR(1g) (W/kg)	Report SAR(1g) (W/kg)	Plot No.
		CH	MHz							
RMC 12.2K	Front	1312	1712.4	23.05	23.50	1.109	-	-	-	-
		1413	1732.6	23.06	23.50	1.107	-	-	-	-
		1513	1752.6	23.17	23.50	1.079	-0.18	0.024	0.026	4

WCDMA Band V										
Mode	Test Position	Frequency		Conducted Power (dBm)	Tune up limit (dBm)	Tune up scaling factor	Power Drift (dB)	Measured SAR(1g) (W/kg)	Report SAR(1g) (W/kg)	Plot No.
		CH	MHz							
RMC 12.2K	Front	4132	826.4	23.50	24.00	1.122	-	-	-	-
		4183	836.6	23.46	24.00	1.132	-	-	-	-
		4233	846.6	23.62	24.00	1.091	-0.02	0.136	0.148	5

LTE Band 2										
Mode	Test Position	Frequency		Conducted Power (dBm)	Tune up limit (dBm)	Tune up scaling factor	Power Drift (dB)	Measured SAR(1g) (W/kg)	Report SAR(1g) (W/kg)	Plot No.
		CH	MHz							
20M QPSK 1RB	Front	18700	1860	21.71	22.00	1.069	-	-	-	-
		18900	1880	21.66	22.00	1.081	-	-	-	-
		19100	1900	21.76	22.00	1.057	-0.14	0.009	0.009	6
20M QPSK 50RB	Front	18700	1860	20.53	21.00	1.114	-	-	-	-
		18900	1880	20.64	21.00	1.086	0.05	0.006	0.007	-
		19100	1900	20.42	21.00	1.143	-	-	-	-

LTE Band 4										
Mode	Test Position	Frequency		Conducted Power (dBm)	Tune up limit (dBm)	Tune up scaling factor	Power Drift (dB)	Measured SAR(1g) (W/kg)	Report SAR(1g) (W/kg)	Plot No.
		CH	MHz							
20M QPSK 1RB	Front	20050	1720	21.85	22.00	1.035	-	-	-	-
		20175	1732.5	21.73	22.00	1.064	-	-	-	-
		20300	1745	21.88	22.00	1.028	0.18	0.009	0.010	7
20M QPSK 50RB	Front	20050	1720	20.78	21.00	1.052	-0.07	0.007	0.007	-
		20175	1732.5	20.75	21.00	1.059	-	-	-	-
		20300	1745	20.55	21.00	1.109	-	-	-	-

LTE Band 5										
Mode	Test Position	Frequency		Conducted Power (dBm)	Tune up limit (dBm)	Tune up scaling factor	Power Drift (dB)	Measured SAR(1g) (W/kg)	Report SAR(1g) (W/kg)	Plot No.
		CH	MHz							
10M QPSK 1RB	Front	20450	829	22.49	23.00	1.125	-	-	-	-
		20525	836.5	22.68	23.00	1.076	-0.02	0.104	0.112	8
		20600	844	22.38	23.00	1.153	-	-	-	-
10M QPSK 25RB	Front	20450	829	21.64	22.00	1.086	-	-	-	-
		20525	836.5	21.45	22.00	1.135	-	-	-	-
		20600	844	21.71	22.00	1.069	0.08	0.074	0.079	-

LTE Band 7										
Mode	Test Position	Frequency		Conducted Power (dBm)	Tune up limit (dBm)	Tune up scaling factor	Power Drift (dB)	Measured SAR(1g) (W/kg)	Report SAR(1g) (W/kg)	Plot No.
		CH	MHz							
20M QPSK 1RB	Front	20850	2510	22.26	23.00	1.186	-	-	-	-
		21100	2535	22.35	23.00	1.161	-	-	-	-
		21350	2560	22.88	23.00	1.028	0.13	0.018	0.018	9
20M QPSK 50RB	Front	20850	2510	21.25	22.00	1.189	-	-	-	-
		21100	2535	21.15	22.00	1.216	-	-	-	-
		21350	2560	21.60	22.00	1.096	-0.05	0.013	0.014	-

LTE Band 12										
Mode	Test Position	Frequency		Conducted Power (dBm)	Tune up limit (dBm)	Tune up scaling factor	Power Drift (dB)	Measured SAR(1g) (W/kg)	Report SAR(1g) (W/kg)	Plot No.
		CH	MHz							
10M QPSK 1RB	Front	23060	704	23.71	24.00	1.069	-	-	-	-
		23095	707.5	23.72	24.00	1.067	-	-	-	-
		23130	711	23.90	24.00	1.023	0.08	0.002	0.002	10
10M QPSK 25RB	Front	23060	704	22.63	23.00	1.089	-	-	-	-
		23095	707.5	22.83	23.00	1.040	-0.11	0.001	0.001	-
		23130	711	22.40	23.00	1.148	-	-	-	-

LTE Band 17										
Mode	Test Position	Frequency		Conducted Power (dBm)	Tune up limit (dBm)	Tune up scaling factor	Power Drift (dB)	Measured SAR(1g) (W/kg)	Report SAR(1g) (W/kg)	Plot No.
		CH	MHz							
10M QPSK 1RB	Front	23780	709	23.08	23.50	1.102	-	-	-	-
		23790	710	23.08	23.50	1.102	-	-	-	-
		23800	711	23.19	23.50	1.074	0.10	0.001	0.001	11
10M QPSK 25RB	Front	23780	709	22.08	22.50	1.102	0.02	0.001	0.001	-
		23790	710	22.00	22.50	1.122	-	-	-	-
		23800	711	21.90	22.50	1.148	-	-	-	-

LTE Band 41											
Mode	Test Position	Frequency		Conducted Power (dBm)	Tune up limit (dBm)	Tune up scaling factor	Duty Cycle Scaling Factor	Power Drift (dB)	Measured SAR(1g) (W/kg)	Report SAR(1g) (W/kg)	Plot No.
		CH	MHz								
20M QPSK 1RB	Front	40340	2565	20.70	21.50	1.202	1.006	-	-	-	-
		40740	2605	21.01	21.50	1.119	1.006	-0.05	0.010	0.011	12
		41140	2645	20.67	21.50	1.211	1.006	-	-	-	-
20M QPSK 50RB	Front	40340	2565	20.47	21.50	1.268	1.006	-	-	-	-
		40740	2605	21.17	21.50	1.079	1.006	0.02	0.007	0.008	-
		41140	2645	20.87	21.50	1.156	1.006	-	-	-	-

Note:

For TDD LTE SAR measurement, the duty cycle 1:1.59 (62.9%) was used perform testing and considering the theoretical duty cycle of 63.3% for extended cyclic prefix in the uplink, and the theoretical duty cycle of 62.9% for normal cyclic prefix in uplink, a scaling factor of extended cyclic prefix $63.3\%/62.9\% = 1.006$ is applied to scale-up the measured SAR result. The Reported TDD LTE SAR = measured SAR (W/kg) * Tune-up Scaling Factor * scaling factor for extended cyclic prefix.

WiFi 2.4G												
Mode	Test Position	Frequency		Conducted Power (dBm)	Tune-up limit (dBm)	Tune-up scaling factor	Duty Cycle	Duty Cycle Scaling Factor	Power Drift (dB)	Measured SAR(1g) (W/kg)	Report SAR(1g) (W/kg)	Plot No.
		CH	MHz									
802.11b	Front	1	2412	15.51	16.00	1.119	99.50%	1.01	-	-	-	-
		6	2437	16.06	16.50	1.107	99.50%	1.01	-0.13	0.031	0.034	13
		11	2462	15.66	16.00	1.081	99.50%	1.01	-	-	-	-

13.2. Body SAR

GSM850										
Mode	Test Position	Frequency		Conducted Power (dBm)	Tune up limit (dBm)	Tune up scaling factor	Power Drift(dB)	Measured SAR(1g) (W/kg)	Report SAR(1g) (W/kg)	Plot No.
		CH	MHz							
GPRS (4Tx slots)	Front	128	824.2	29.85	30.50	1.161	-	-	-	-
		190	836.6	29.93	30.50	1.140	-	-	-	-
		251	848.8	30.03	30.50	1.114	-0.04	0.294	0.328	-
	Rear	128	824.2	29.85	30.50	1.161	-	-	-	-
		190	836.6	29.93	30.50	1.140	-	-	-	-
		251	848.8	30.03	30.50	1.114	0.04	0.384	0.428	14
	Front (back splint)	128	824.2	29.85	30.50	1.161	-	-	-	-
		190	836.6	29.93	30.50	1.140	-	-	-	-
		251	848.8	30.03	30.50	1.114	-0.02	0.183	0.204	-

PCS1900										
Mode	Test Position	Frequency		Conducted Power (dBm)	Tune up limit (dBm)	Tune up scaling factor	Power Drift(dB)	Measured SAR(1g) (W/kg)	Report SAR(1g) (W/kg)	Plot No.
		CH	MHz							
GPRS (3Tx slots)	Front	512	1850.2	28.51	29.00	1.119	0.01	0.326	0.365	15
		661	1880	28.50	29.00	1.122	-	-	-	-
		810	1909.8	28.25	29.00	1.189	-	-	-	-
	Rear	512	1850.2	28.51	29.00	1.119	-0.11	0.262	0.293	-
		661	1880	28.50	29.00	1.122	-	-	-	-
		810	1909.8	28.25	29.00	1.189	-	-	-	-
	Front (back splint)	512	1850.2	28.51	29.00	1.119	0.16	0.018	0.020	-
		661	1880	28.50	29.00	1.122	-	-	-	-
		810	1909.8	28.25	29.00	1.189	-	-	-	-

WCDMA Band II										
Mode	Test Position	Frequency		Conducted Power (dBm)	Tune up limit (dBm)	Tune up scaling factor	Power Drift(dB)	Measured SAR(1g) (W/kg)	Report SAR(1g) (W/kg)	Plot No.
		CH	MHz							
RMC 12.2K	Front	9262	1852.4	24.32	24.50	1.042	-0.11	0.035	0.036	16
		9400	1880	23.97	24.50	1.130	-	-	-	-
		9538	1907.6	23.91	24.50	1.146	-	-	-	-
	Rear	9262	1852.4	24.32	24.50	1.042	-0.12	0.023	0.024	-
		9400	1880	23.97	24.50	1.130	-	-	-	-
		9538	1907.6	23.91	24.50	1.146	-	-	-	-
	Front (back splint)	9262	1852.4	24.32	24.50	1.042	-0.09	0.007	0.008	-
		9400	1880	23.97	24.50	1.130	-	-	-	-
		9538	1907.6	23.91	24.50	1.146	-	-	-	-

WCDMA Band IV										
Mode	Test Position	Frequency		Conducted Power (dBm)	Tune up limit (dBm)	Tune up scaling factor	Power Drift(dB)	Measured SAR(1g) (W/kg)	Report SAR(1g) (W/kg)	Plot No.
		CH	MHz							
RMC 12.2K	Front	1312	1712.4	23.05	23.50	1.109	-	-	-	-
		1413	1732.6	23.06	23.50	1.107	-	-	-	-
		1513	1752.6	23.17	23.50	1.079	-0.07	0.096	0.103	17
	Rear	1312	1712.4	23.05	23.50	1.109	-	-	-	-
		1413	1732.6	23.06	23.50	1.107	-	-	-	-
		1513	1752.6	23.17	23.50	1.079	-0.06	0.079	0.085	-
	Front (back splint)	1312	1712.4	23.05	23.50	1.109	-	-	-	-
		1413	1732.6	23.06	23.50	1.107	-	-	-	-
		1513	1752.6	23.17	23.50	1.079	-0.09	0.020	0.022	-

WCDMA Band V										
Mode	Test Position	Frequency		Conducted Power (dBm)	Tune up limit (dBm)	Tune up scaling factor	Power Drift(dB)	Measured SAR(1g) (W/kg)	Report SAR(1g) (W/kg)	Plot No.
		CH	MHz							
RMC 12.2K	Front	4132	826.4	23.50	24.00	1.122	-	-	-	-
		4183	836.6	23.46	24.00	1.132	-	-	-	-
		4233	846.6	23.62	24.00	1.091	-0.02	0.218	0.238	-
	Rear	4132	826.4	23.50	24.00	1.122	-	-	-	-
		4183	836.6	23.46	24.00	1.132	-	-	-	-
		4233	846.6	23.62	24.00	1.091	0.05	0.243	0.265	18
	Front (back splint)	4132	826.4	23.50	24.00	1.122	-	-	-	-
		4183	836.6	23.46	24.00	1.132	-	-	-	-
		4233	846.6	23.62	24.00	1.091	0.03	0.047	0.051	-

LTE Band 2										
Mode	Test Position	Frequency		Conducted Power (dBm)	Tune up limit (dBm)	Tune up scaling factor	Power Drift(dB)	Measured SAR(1g) (W/kg)	Report SAR(1g) (W/kg)	Plot No.
		CH	MHz							
20M QPSK 1RB	Front	18700	1860	21.71	22.00	1.069	-	-	-	-
		18900	1880	21.66	22.00	1.081	-	-	-	-
		19100	1900	21.76	22.00	1.057	-0.19	0.036	0.038	19
	Rear	18700	1860	21.71	22.00	1.069	-	-	-	-
		18900	1880	21.66	22.00	1.081	-	-	-	-
		19100	1900	21.76	22.00	1.057	0.13	0.030	0.031	-
	Front (back splint)	18700	1860	21.71	22.00	1.069	-	-	-	-
		18900	1880	21.66	22.00	1.081	-	-	-	-
		19100	1900	21.76	22.00	1.057	0.09	0.008	0.008	-
20M QPSK 50RB	Front	18700	1860	20.53	21.00	1.114	-	-	-	-
		18900	1880	20.64	21.00	1.086	0.15	0.033	0.036	-
		19100	1900	20.42	21.00	1.143	-	-	-	-
	Rear	18700	1860	20.53	21.00	1.114	-	-	-	-
		18900	1880	20.64	21.00	1.086	-0.08	0.028	0.030	-
		19100	1900	20.42	21.00	1.143	-	-	-	-
	Front (back splint)	18700	1860	20.53	21.00	1.114	-	-	-	-
		18900	1880	20.64	21.00	1.086	-0.02	0.005	0.005	-
		19100	1900	20.42	21.00	1.143	-	-	-	-

LTE Band 4										
Mode	Test Position	Frequency		Conducted Power (dBm)	Tune up limit (dBm)	Tune up scaling factor	Power Drift(dB)	Measured SAR(1g) (W/kg)	Report SAR(1g) (W/kg)	Plot No.
		CH	MHz							
20M QPSK 1RB	Front	20050	1720	21.85	22.00	1.035	-	-	-	-
		20175	1732.5	21.73	22.00	1.064	-	-	-	-
		20300	1745	21.88	22.00	1.028	-0.05	0.038	0.039	20
	Rear	20050	1720	21.85	22.00	1.035	-	-	-	-
		20175	1732.5	21.73	22.00	1.064	-	-	-	-
		20300	1745	21.88	22.00	1.028	0.11	0.028	0.029	-
	Front (back splint)	20050	1720	21.85	22.00	1.035	-	-	-	-
		20175	1732.5	21.73	22.00	1.064	-	-	-	-
		20300	1745	21.88	22.00	1.028	0.02	0.008	0.008	-
20M QPSK 50RB	Front	20050	1720	20.78	21.00	1.052	0.09	0.033	0.035	-
		20175	1732.5	20.75	21.00	1.059	-	-	-	-
		20300	1745	20.55	21.00	1.109	-	-	-	-
	Rear	20050	1720	20.78	21.00	1.052	-0.07	0.026	0.027	-
		20175	1732.5	20.75	21.00	1.059	-	-	-	-
		20300	1745	20.55	21.00	1.109	-	-	-	-
	Front (back splint)	20050	1720	20.78	21.00	1.052	-0.04	0.006	0.006	-
		20175	1732.5	20.75	21.00	1.059	-	-	-	-
		20300	1745	20.55	21.00	1.109	-	-	-	-

LTE Band 5										
Mode	Test Position	Frequency		Conducted Power (dBm)	Tune up limit (dBm)	Tune up scaling factor	Power Drift(dB)	Measured SAR(1g) (W/kg)	Report SAR(1g) (W/kg)	Plot No.
		CH	MHz							
10M QPSK 1RB	Front	20450	829	22.49	23.00	1.125	-	-	-	-
		20525	836.5	22.68	23.00	1.076	-0.13	0.186	0.200	-
		20600	844	22.38	23.00	1.153	-	-	-	-
	Rear	20450	829	22.49	23.00	1.125	-	-	-	-
		20525	836.5	22.68	23.00	1.076	-0.06	0.222	0.239	21
		20600	844	22.38	23.00	1.153	-	-	-	-
	Front (back splint)	20450	829	22.49	23.00	1.125	-	-	-	-
		20525	836.5	22.68	23.00	1.076	0.04	0.083	0.089	-
		20600	844	22.38	23.00	1.153	-	-	-	-
10M QPSK 25RB	Front	20450	829	21.64	22.00	1.086	-	-	-	-
		20525	836.5	21.45	22.00	1.135	-	-	-	-
		20600	844	21.71	22.00	1.069	0.10	0.168	0.180	-
	Rear	20450	829	21.64	22.00	1.086	-	-	-	-
		20525	836.5	21.45	22.00	1.135	-	-	-	-
		20600	844	21.71	22.00	1.069	-0.16	0.217	0.232	-
	Front (back splint)	20450	829	21.64	22.00	1.086	-	-	-	-
		20525	836.5	21.45	22.00	1.135	-	-	-	-
		20600	844	21.71	22.00	1.069	-0.07	0.069	0.074	-

LTE Band 7										
Mode	Test Position	Frequency		Conducted Power (dBm)	Tune up limit (dBm)	Tune up scaling factor	Power Drift(dB)	Measured SAR(1g) (W/kg)	Report SAR(1g) (W/kg)	Plot No.
		CH	MHz							
20M QPSK 1RB	Front	20850	2510	22.26	23.00	1.186	-	-	-	-
		21100	2535	22.35	23.00	1.161	-	-	-	-
		21350	2560	22.88	23.00	1.028	0.12	0.077	0.079	-
	Rear	20850	2510	22.26	23.00	1.186	-	-	-	-
		21100	2535	22.35	23.00	1.161	-	-	-	-
		21350	2560	22.88	23.00	1.028	-0.07	0.113	0.116	22
	Front (back splint)	20850	2510	22.26	23.00	1.186	-	-	-	-
		21100	2535	22.35	23.00	1.161	-	-	-	-
		21350	2560	22.88	23.00	1.028	-0.07	0.017	0.017	-
20M QPSK 50RB	Front	20850	2510	21.25	22.00	1.189	-	-	-	-
		21100	2535	21.15	22.00	1.216	-	-	-	-
		21350	2560	21.60	22.00	1.096	-0.09	0.072	0.079	-
	Rear	20850	2510	21.25	22.00	1.189	-	-	-	-
		21100	2535	21.15	22.00	1.216	-	-	-	-
		21350	2560	21.60	22.00	1.096	0.15	0.109	0.120	-
	Front (back splint)	20850	2510	21.25	22.00	1.189	-	-	-	-
		21100	2535	21.15	22.00	1.216	-	-	-	-
		21350	2560	21.60	22.00	1.096	-0.04	0.010	0.011	-

LTE Band 12										
Mode	Test Position	Frequency		Conducted Power (dBm)	Tune up limit (dBm)	Tune up scaling factor	Power Drift(dB)	Measured SAR(1g) (W/kg)	Report SAR(1g) (W/kg)	Plot No.
		CH	MHz							
10M QPSK 1RB	Front	23060	704	23.71	24.00	1.069	-	-	-	-
		23095	707.5	23.72	24.00	1.067	-	-	-	-
		23130	711	23.90	24.00	1.023	0.06	0.003	0.003	-
	Rear	23060	704	23.71	24.00	1.069	-	-	-	-
		23095	707.5	23.72	24.00	1.067	-	-	-	-
		23130	711	23.90	24.00	1.023	0.11	0.004	0.004	23
	Front (back splint)	23060	704	23.71	24.00	1.069	-	-	-	-
		23095	707.5	23.72	24.00	1.067	-	-	-	-
		23130	711	23.90	24.00	1.023	-0.08	0.001	0.001	-
10M QPSK 25RB	Front	23060	704	22.63	23.00	1.089	-	-	-	-
		23095	707.5	22.83	23.00	1.040	-0.14	0.002	0.002	-
		23130	711	22.40	23.00	1.148	-	-	-	-
	Rear	23060	704	22.63	23.00	1.089	-	-	-	-
		23095	707.5	22.83	23.00	1.040	0.02	0.003	0.003	-
		23130	711	22.40	23.00	1.148	-	-	-	-
	Front (back splint)	23060	704	22.63	23.00	1.089	-	-	-	-
		23095	707.5	22.83	23.00	1.040	0.06	0.001	0.001	-
		23130	711	22.40	23.00	1.148	-	-	-	-

LTE Band 17										
Mode	Test Position	Frequency		Conducted Power (dBm)	Tune up limit (dBm)	Tune up scaling factor	Power Drift(dB)	Measured SAR(1g) (W/kg)	Report SAR(1g) (W/kg)	Plot No.
		CH	MHz							
10M QPSK 1RB	Front	23780	709	23.08	23.50	1.102	-	-	-	-
		23790	710	23.08	23.50	1.102	-	-	-	-
		23800	711	23.19	23.50	1.074	-0.08	0.004	0.004	-
	Rear	23780	709	23.08	23.50	1.102	-	-	-	-
		23790	710	23.08	23.50	1.102	-	-	-	-
		23800	711	23.19	23.50	1.074	-0.16	0.005	0.005	24
	Front (back splint)	23780	709	23.08	23.50	1.102	-	-	-	-
		23790	710	23.08	23.50	1.102	-	-	-	-
		23800	711	23.19	23.50	1.074	0.12	0.001	0.001	-
10M QPSK 25RB	Front	23780	709	22.08	22.50	1.102	-0.06	0.002	0.003	-
		23790	710	22.00	22.50	1.122	-	-	-	-
		23800	711	21.90	22.50	1.148	-	-	-	-
	Rear	23780	709	22.08	22.50	1.102	0.10	0.003	0.003	-
		23790	710	22.00	22.50	1.122	-	-	-	-
		23800	711	21.90	22.50	1.148	-	-	-	-
	Front (back splint)	23780	709	22.08	22.50	1.102	-0.13	0.001	0.001	-
		23790	710	22.00	22.50	1.122	-	-	-	-
		23800	711	21.90	22.50	1.148	-	-	-	-

LTE Band 41											
Mode	Test Position	Frequency		Conducted Power (dBm)	Tune up limit (dBm)	Tune up scaling factor	Duty Cycle Scaling Factor	Power Drift(dB)	Measured SAR(1g) (W/kg)	Report SAR(1g) (W/kg)	Plot No.
		CH	MHz								
20M QPSK 1RB	Front	40340	2565	20.70	21.50	1.202	1.006	-	-	-	-
		40740	2605	21.01	21.50	1.119	1.006	-0.08	0.046	0.052	-
		41140	2645	20.67	21.50	1.211	1.006	-	-	-	-
	Rear	40340	2565	20.70	21.50	1.202	1.006	-	-	-	-
		40740	2605	21.01	21.50	1.119	1.006	-0.15	0.055	0.061	25
		41140	2645	20.67	21.50	1.211	1.006	-	-	-	-
	Front (back splint)	40340	2565	20.70	21.50	1.202	1.006	-	-	-	-
		40740	2605	21.01	21.50	1.119	1.006	0.16	0.008	0.009	-
		41140	2645	20.67	21.50	1.211	1.006	-	-	-	-
20M QPSK 50RB	Front	40340	2565	20.47	21.50	1.268	1.006	-	-	-	-
		40740	2605	21.17	21.50	1.079	1.006	-0.07	0.040	0.043	-
		41140	2645	20.87	21.50	1.156	1.006	-	-	-	-
	Rear	40340	2565	20.47	21.50	1.268	1.006	-	-	-	-
		40740	2605	21.17	21.50	1.079	1.006	0.11	0.051	0.055	-
		41140	2645	20.87	21.50	1.156	1.006	-	-	-	-
	Front (back splint)	40340	2565	20.47	21.50	1.268	1.006	-	-	-	-
		40740	2605	21.17	21.50	1.079	1.006	-0.03	0.005	0.005	-
		41140	2645	20.87	21.50	1.156	1.006	-	-	-	-

Note:

For TDD LTE SAR measurement, the duty cycle 1:1.59 (62.9%) was used perform testing and considering the theoretical duty cycle of 63.3% for extended cyclic prefix in the uplink, and the theoretical duty cycle of 62.9% for normal cyclic prefix in uplink, a scaling factor of extended cyclic prefix $63.3\%/62.9\% = 1.006$ is applied to scale-up the measured SAR result. The Reported TDD LTE SAR = measured SAR (W/kg) * Tune-up Scaling Factor * scaling factor for extended cyclic prefix.

WiFi 2.4G												
Mode	Test Position	Frequency		Conducted Power (dBm)	Tune-up limit (dBm)	Tune-up scaling factor	Duty Cycle	Duty Cycle Scaling Factor	Power Drift (dB)	Measured SAR(1g) (W/kg)	Report SAR(1g) (W/kg)	Plot No.
		CH	MHz									
802.11b	Front	1	2412	15.51	16.00	1.119	99.50%	1.01	-	-	-	-
		6	2437	16.06	16.50	1.107	99.50%	1.01	0.06	0.096	0.107	-
		11	2462	15.66	16.00	1.081	99.50%	1.01	-	-	-	-
	Rear	1	2412	15.51	16.00	1.119	99.50%	1.01	-	-	-	-
		6	2437	16.06	16.50	1.107	99.50%	1.01	-0.19	0.113	0.126	26
		11	2462	15.66	16.00	1.081	99.50%	1.01	-	-	-	-
	Front (back splint)	1	2412	15.51	16.00	1.119	99.50%	1.01	-	-	-	-
		6	2437	16.06	16.50	1.107	99.50%	1.01	0.10	0.028	0.031	-
		11	2462	15.66	16.00	1.081	99.50%	1.01	-	-	-	-

SAR Test Data Plots to the Appendix A.

14. Simultaneous Transmission analysis

No.	Simultaneous Transmission Configurations	Head	Body-worn	Note
1	GSM(voice) + Bluetooth (data)	Yes	Yes	
2	GSM(voice) + WIFI (data)	Yes	Yes	
3	WCDMA(voice) + Bluetooth (data)	Yes	Yes	
4	WCDMA(voice) + WIFI (data)	Yes	Yes	
5	GPRS (data) + Bluetooth (data)	Yes	Yes	
6	GPRS (data) + WIFI (data)	Yes	Yes	
7	WCDMA (data) + Bluetooth (data)	Yes	Yes	
8	WCDMA (data) + WIFI (data)	Yes	Yes	
9	LTE + Bluetooth (data)	Yes	Yes	
10	LTE + WIFI (data)	Yes	Yes	

General note:

1. WLAN and Bluetooth share the same antenna, and cannot transmit simultaneously.
2. EUT will choose either GSM or WCDMA LTE according to the network signal condition; therefore, they will not operate simultaneously at any moment.
3. The reported SAR summation is calculated based on the same configuration and test position
4. For simultaneous transmission analysis, Bluetooth SAR is estimated per KDB 447498 D01 based on the formula below
 - a) $[(\text{max. Power of channel, including tune-up tolerance, mW}) / (\text{min. test separation distance, mm})] * [\sqrt{f(\text{GHz})}/x] \text{W/kg}$ for test separation distances $\leq 50\text{mm}$; when $x=7.5$ for 1-g SAR, and $x=18.75$ for 10-g SAR.
 - b) When the minimum separation distance is $<5\text{mm}$, the distance is used 5mm to determine SAR test exclusion
 - c) 0.4 W/kg for 1-g SAR and 1.0W/kg for 10-g SAR, when the test separation distances is $>50\text{mm}$.

Bluetooth Max power	Exposure position	Head	Body-worn
	Test separation	25mm	10mm
6.00 dBm	Estimated SAR (W/kg)	0.033	0.083

14.1. Head

PCT + WLAN DTS					
WWAN Band		Exposure Position	Max SAR (W/kg)		Summed SAR
			PCT	WLAN DTS	(W/kg)
GSM	GSM850	Front	0.240	0.034	0.274
	PCS1900	Front	0.040	0.034	0.074
WCDMA	Band II	Front	0.008	0.034	0.042
	Band IV	Front	0.026	0.034	0.060
	Band V	Front	0.148	0.034	0.182
LTE	B2 1RB	Front	0.009	0.034	0.043
	B2 50RB	Front	0.007	0.034	0.041
	B4 1RB	Front	0.010	0.034	0.044
	B4 50RB	Front	0.007	0.034	0.041
	B5 1RB	Front	0.112	0.034	0.146
	B5 25RB	Front	0.079	0.034	0.113
	B7 1RB	Front	0.018	0.034	0.052
	B7 50RB	Front	0.014	0.034	0.048
	B12 1RB	Front	0.002	0.034	0.036
	B12 25RB	Front	0.001	0.034	0.035
	B17 1RB	Front	0.001	0.034	0.035
	B17 25RB	Front	0.001	0.034	0.035
	B41 1RB	Front	0.011	0.034	0.045
	B41 50RB	Front	0.008	0.034	0.042

PCT + Bluetooth					
WWAN Band		Exposure Position	Max SAR (W/kg)		Summed SAR
			PCT	Bluetooth	(W/kg)
GSM	GSM850	Front	0.240	0.033	0.273
	PCS1900	Front	0.040	0.033	0.073
WCDMA	Band II	Front	0.008	0.033	0.041
	Band IV	Front	0.026	0.033	0.059
	Band V	Front	0.148	0.033	0.181
LTE	B2 1RB	Front	0.009	0.033	0.042
	B2 50RB	Front	0.007	0.033	0.040
	B4 1RB	Front	0.010	0.033	0.043
	B4 50RB	Front	0.007	0.033	0.040
	B5 1RB	Front	0.112	0.033	0.145
	B5 25RB	Front	0.079	0.033	0.112
	B7 1RB	Front	0.018	0.033	0.051
	B7 50RB	Front	0.014	0.033	0.047
	B12 1RB	Front	0.002	0.033	0.035
	B12 25RB	Front	0.001	0.033	0.034
	B17 1RB	Front	0.001	0.033	0.034
	B17 25RB	Front	0.001	0.033	0.034
	B41 1RB	Front	0.011	0.033	0.044
	B41 50RB	Front	0.008	0.033	0.041

14.2. Body

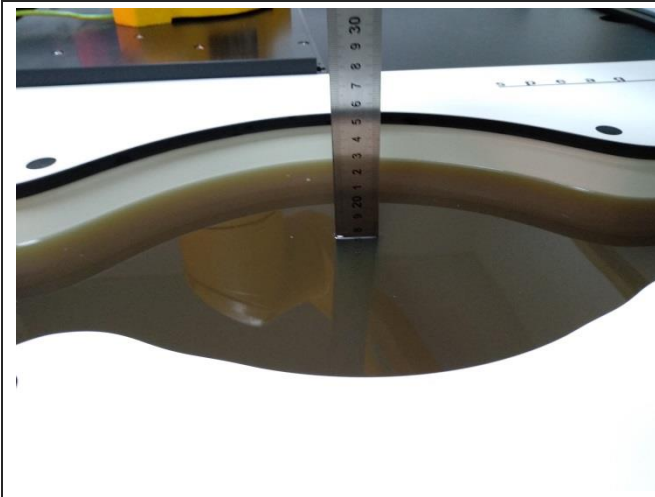
PCT + WLAN DTS					
WWAN Band		Exposure Position	Max SAR (W/kg)		Summed SAR
			PCT	WLAN DTS	(W/kg)
GSM	GSM850	Front	0.328	0.107	0.435
		Rear	0.428	0.126	0.554
		Front (back splint)	0.204	0.031	0.235
	PCS1900	Front	0.365	0.107	0.472
		Rear	0.293	0.126	0.419
		Front (back splint)	0.020	0.031	0.051
WCDMA	Band II	Front	0.036	0.107	0.143
		Rear	0.024	0.126	0.150
		Front (back splint)	0.008	0.031	0.039
	Band IV	Front	0.103	0.107	0.210
		Rear	0.085	0.126	0.211
		Front (back splint)	0.022	0.031	0.053
	Band V	Front	0.238	0.107	0.345
		Rear	0.265	0.126	0.391
		Front (back splint)	0.051	0.031	0.082
LTE	B2 1RB	Front	0.038	0.107	0.145
		Rear	0.031	0.126	0.157
		Front (back splint)	0.008	0.031	0.039
	B2 50RB	Front	0.036	0.107	0.143
		Rear	0.030	0.126	0.156
		Front (back splint)	0.005	0.031	0.036
	B4 1RB	Front	0.039	0.107	0.146
		Rear	0.029	0.126	0.155
		Front (back splint)	0.008	0.031	0.039
	B4 50RB	Front	0.035	0.107	0.142
		Rear	0.027	0.126	0.153
		Front (back splint)	0.006	0.031	0.037

LTE	B5 1RB	Front	0.200	0.107	0.307
		Rear	0.239	0.126	0.365
		Front (back splint)	0.089	0.031	0.120
	B5 25RB	Front	0.180	0.107	0.287
		Rear	0.232	0.126	0.358
		Front (back splint)	0.074	0.031	0.105
	B7 1RB	Front	0.079	0.107	0.186
		Rear	0.116	0.126	0.242
		Front (back splint)	0.017	0.031	0.048
	B7 50RB	Front	0.079	0.107	0.186
		Rear	0.120	0.126	0.246
		Front (back splint)	0.011	0.031	0.042
	B12 1RB	Front	0.003	0.107	0.110
		Rear	0.004	0.126	0.130
		Front (back splint)	0.001	0.031	0.032
	B12 25RB	Front	0.002	0.107	0.109
		Rear	0.003	0.126	0.129
		Front (back splint)	0.001	0.031	0.032
	B17 1RB	Front	0.004	0.107	0.111
		Rear	0.005	0.126	0.131
		Front (back splint)	0.001	0.031	0.032
	B17 25RB	Front	0.003	0.107	0.110
		Rear	0.003	0.126	0.129
		Front (back splint)	0.001	0.031	0.032
B41 1RB	Front	0.052	0.107	0.159	
	Rear	0.061	0.126	0.187	
	Front (back splint)	0.009	0.031	0.040	
B41 50RB	Front	0.043	0.107	0.150	
	Rear	0.055	0.126	0.181	
	Front (back splint)	0.005	0.031	0.036	

PCT + Bluetooth					
WWAN Band		Exposure Position	Max SAR (W/kg)		Summed SAR
			PCT	Bluetooth	(W/kg)
GSM	GSM850	Front	0.328	0.083	0.411
		Rear	0.428	0.083	0.511
		Front (back splint)	0.204	0.083	0.287
	PCS1900	Front	0.365	0.083	0.448
		Rear	0.293	0.083	0.376
		Front (back splint)	0.020	0.083	0.103
WCDMA	Band II	Front	0.036	0.083	0.119
		Rear	0.024	0.083	0.107
		Front (back splint)	0.008	0.083	0.091
	Band IV	Front	0.103	0.083	0.186
		Rear	0.085	0.083	0.168
		Front (back splint)	0.022	0.083	0.105
	Band V	Front	0.238	0.083	0.321
		Rear	0.265	0.083	0.348
		Front (back splint)	0.051	0.083	0.134
LTE	B2 1RB	Front	0.038	0.083	0.121
		Rear	0.031	0.083	0.114
		Front (back splint)	0.008	0.083	0.091
	B2 50RB	Front	0.036	0.083	0.119
		Rear	0.030	0.083	0.113
		Front (back splint)	0.005	0.083	0.088
	B4 1RB	Front	0.039	0.083	0.122
		Rear	0.029	0.083	0.112
		Front (back splint)	0.008	0.083	0.091
	B4 50RB	Front	0.035	0.083	0.118
		Rear	0.027	0.083	0.110
		Front (back splint)	0.006	0.083	0.089

LTE	B5 1RB	Front	0.200	0.083	0.283
		Rear	0.239	0.083	0.322
		Front (back splint)	0.089	0.083	0.172
	B5 25RB	Front	0.180	0.083	0.263
		Rear	0.232	0.083	0.315
		Front (back splint)	0.074	0.083	0.157
	B7 1RB	Front	0.079	0.083	0.162
		Rear	0.116	0.083	0.199
		Front (back splint)	0.017	0.083	0.100
	B7 50RB	Front	0.079	0.083	0.162
		Rear	0.120	0.083	0.203
		Front (back splint)	0.011	0.083	0.094
	B12 1RB	Front	0.003	0.083	0.086
		Rear	0.004	0.083	0.087
		Front (back splint)	0.001	0.083	0.084
	B12 25RB	Front	0.002	0.083	0.085
		Rear	0.003	0.083	0.086
		Front (back splint)	0.001	0.083	0.084
	B17 1RB	Front	0.004	0.083	0.087
		Rear	0.005	0.083	0.088
		Front (back splint)	0.001	0.083	0.084
	B17 25RB	Front	0.003	0.083	0.086
		Rear	0.003	0.083	0.086
		Front (back splint)	0.001	0.083	0.084
	B41 1RB	Front	0.052	0.083	0.135
		Rear	0.061	0.083	0.144
		Front (back splint)	0.009	0.083	0.092
B41 50RB	Front	0.043	0.083	0.126	
	Rear	0.055	0.083	0.138	
	Front (back splint)	0.005	0.083	0.088	

15. TestSetup Photos



Liquid depth in the SAM phantom



Front-of-face (25mm)



Body-worn Front (10mm)



Body-worn Rear(10mm)



Body-worn Front(0mm)

16. External and Internal Photos of the EUT

Please reference to the report No.: CHTEW20050004

-----**End of Report**-----