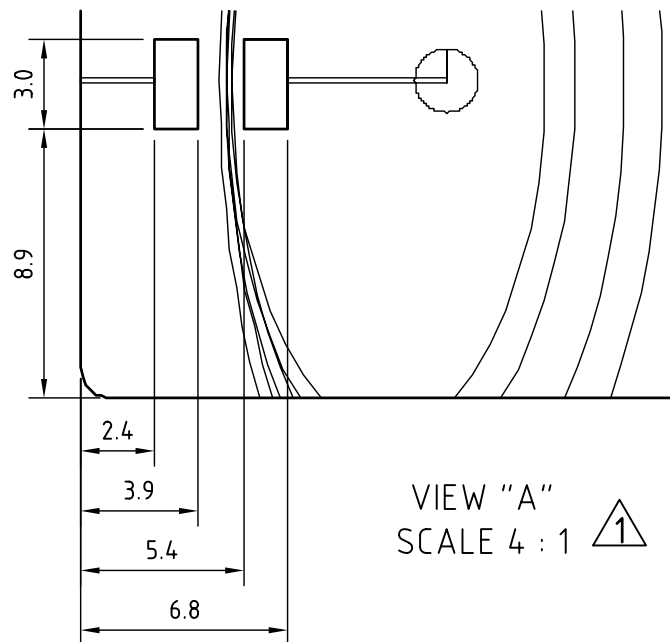
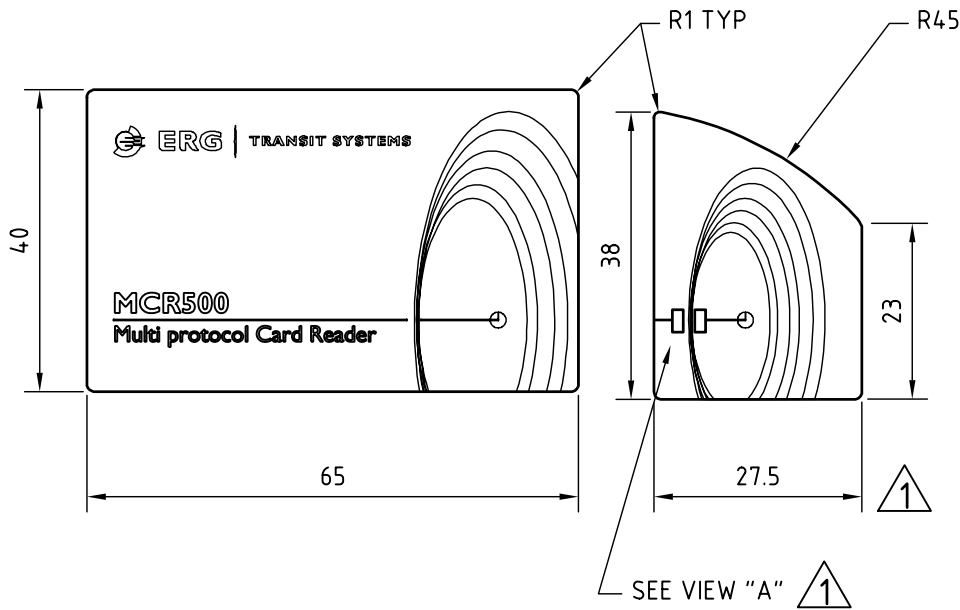


APPENDIX F

FCC ID LABELING - LOCATION



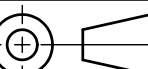

ERG PART NUMBER
87109



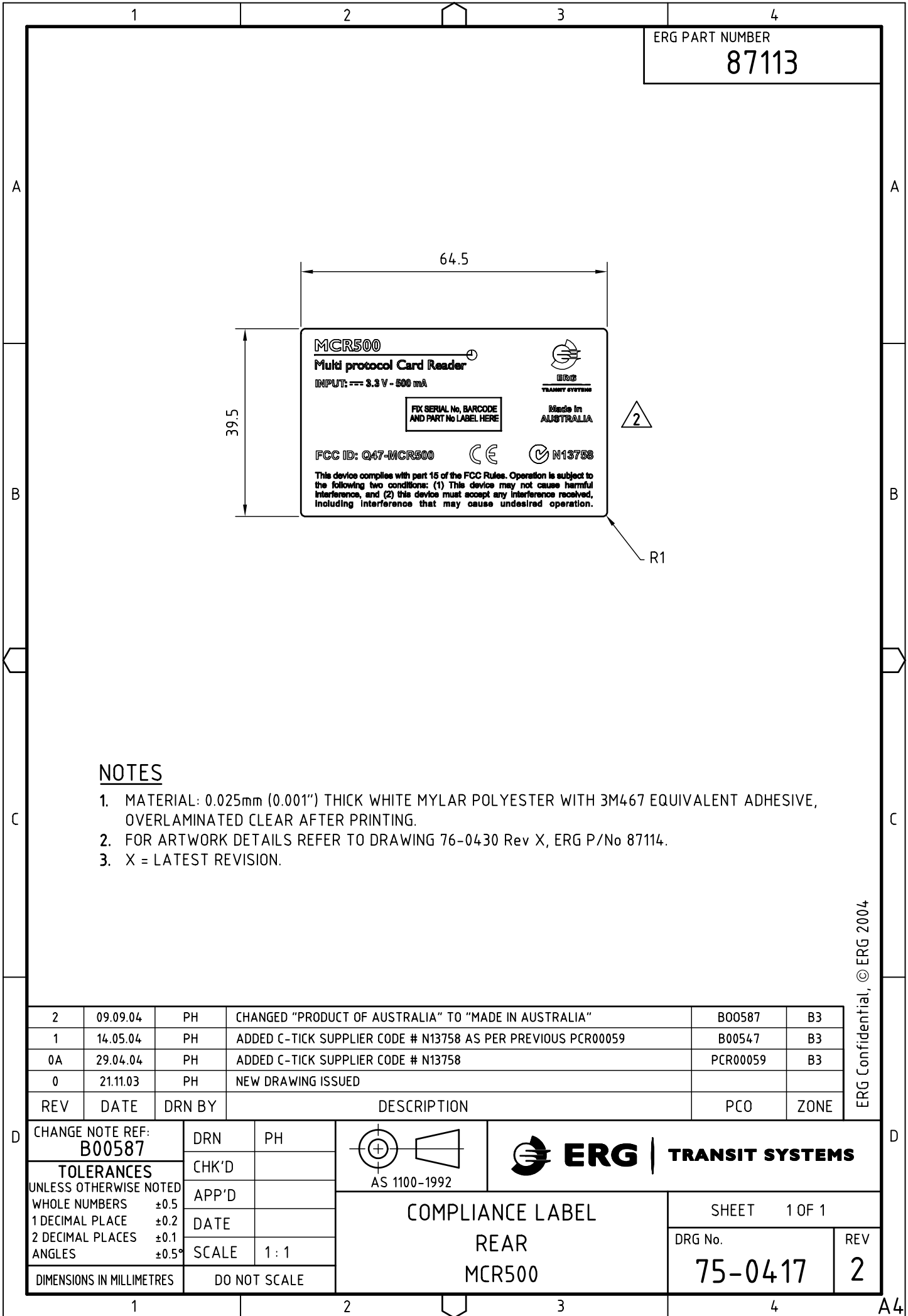
NOTES

1. MATERIAL: 0.125mm THICK FINE TEXTURE POLYESTER WITH 3M467 ADHESIVE.
2. FOR ARTWORK DETAILS REFER TO DRAWING 76-0428 Rev X, ERG P/No 87110.
3. X = LATEST REVISION.

1	20.04.04	PH	ADDED VIEW "A" FOR LED WINDOWS DIMENSIONS, IMPROVED DECAL LOCATION	B00536	
0	21.11.03	PH	NEW DRAWING ISSUED		
REV	DATE	DRN BY	DESCRIPTION	PCO	ZONE

CHANGE NOTE REF: B00536		DRN	PH	 AS 1100-1992			
TOLERANCES UNLESS OTHERWISE NOTED		CHK'D			LABEL SET FRONT MCR500		
WHOLE NUMBERS ±0.5		APP'D		SHEET 1 OF 1			
1 DECIMAL PLACE ±0.2		DATE		DRG No.		REV	
2 DECIMAL PLACES ±0.1		SCALE	1 : 1	75-0416		1	
ANGLES ±0.5°							
DIMENSIONS IN MILLIMETRES		DO NOT SCALE					

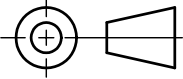

ERG Confidential, © ERG 2004



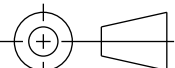

NOTES

- 1. MATERIAL: 0.025mm (0.001") THICK WHITE MYLAR POLYESTER WITH 3M467 EQUIVALENT ADHESIVE, OVERLAMINATED CLEAR AFTER PRINTING.
- 2. FOR ARTWORK DETAILS REFER TO DRAWING 76-0430 Rev X, ERG P/No 87114.
- 3. X = LATEST REVISION.

2	09.09.04	PH	CHANGED "PRODUCT OF AUSTRALIA" TO "MADE IN AUSTRALIA"	B00587	B3
1	14.05.04	PH	ADDED C-TICK SUPPLIER CODE # N13758 AS PER PREVIOUS PCR00059	B00547	B3
0A	29.04.04	PH	ADDED C-TICK SUPPLIER CODE # N13758	PCR00059	B3
0	21.11.03	PH	NEW DRAWING ISSUED		
REV	DATE	DRN BY	DESCRIPTION	PCO	ZONE

CHANGE NOTE REF: B00587		DRN	PH	 AS 1100-1992		
TOLERANCES UNLESS OTHERWISE NOTED		CHK'D				
WHOLE NUMBERS	±0.5	APP'D		COMPLIANCE LABEL REAR MCR500		SHEET 1 OF 1
1 DECIMAL PLACE	±0.2	DATE				DRG No.
2 DECIMAL PLACES	±0.1	SCALE	1 : 1			REV
ANGLES	±0.5°					
DIMENSIONS IN MILLIMETRES		DO NOT SCALE				
				75-0417		2

A4

1		2		3		4																											
						ERG PART No. 87114																											
A							A																										
<div><div><div>MCR500</div><div>Multi protocol Card Reader</div><div>INPUT: --- 3.3 V - 500 mA</div><div>FIX SERIAL No, BARCODE AND PART No LABEL HERE</div><div>FCC ID: Q47-MCR500</div><div><div>This device complies with part 15 of the FCC Rules. Operation is subject to the following two conditions: (1) This device may not cause harmful interference, and (2) this device must accept any interference received, including interference that may cause undesired operation.</div><div><div>BLACK</div><div>WHITE (BACKGROUND)</div></div></div><div><div><div>ERG</div><div>TRANSIT SYSTEMS</div><div>Product of AUSTRALIA</div></div><div><div>CE</div><div></div></div></div></div></div>								B																									
								B																									
C							C																										
<div>Notes:</div> <div>1) Final product colours to match the following Pantone Matching System colour numbers. The displayed colours are for reference only and not to be used for colour matching.</div> <div>2) Registration marks are not printed.</div>																																	
<table><tr><td></td><td></td><td></td><td></td><td></td><td></td><td></td><td></td></tr><tr><td>0</td><td>21.11.03</td><td>PH</td><td colspan="4">NEW DRAWING ISSUED</td><td></td></tr><tr><td>REV</td><td>DATE</td><td>DRN BY</td><td colspan="4">DESCRIPTION</td><td>PCO</td><td>ZONE</td></tr></table>																0	21.11.03	PH	NEW DRAWING ISSUED					REV	DATE	DRN BY	DESCRIPTION				PCO	ZONE	
0	21.11.03	PH	NEW DRAWING ISSUED																														
REV	DATE	DRN BY	DESCRIPTION				PCO	ZONE																									
D	CHANGE NOTE REF: ---		DRN	PH					D																								
TOLERANCES UNLESS OTHERWISE NOTED		CHK'D	<div>ARTWORK COMPLIANCE LABEL REAR MCR500</div>			SHEET 1 OF 1																											
WHOLE NUMBERS ±0.5	APP'D	DRG No. 76-0430				REV 0																											
1 DECIMAL PLACE ±0.2	DATE																																
2 DECIMAL PLACES ±0.1	SCALE 1 : 1																																
ANGLES ±0.5°	DO NOT SCALE																																
DIMENSIONS IN MILLIMETRES																																	

 A4 || 1 | | 2 | | 3 | | 4 | |