

APPROVAL SHEET

For : 倫飛電腦股份有限公司
Twinhead International Computer, Inc.

MODEL : 3200 Series

Wgt P/N : TWE12WIPI02A

DATE : 25 NOV.,2003

DESCRIPTION : E12T Wireless PIFA Antenna

CUSTOMER P/N : PIFA ANTENNA-R C3774-E12T

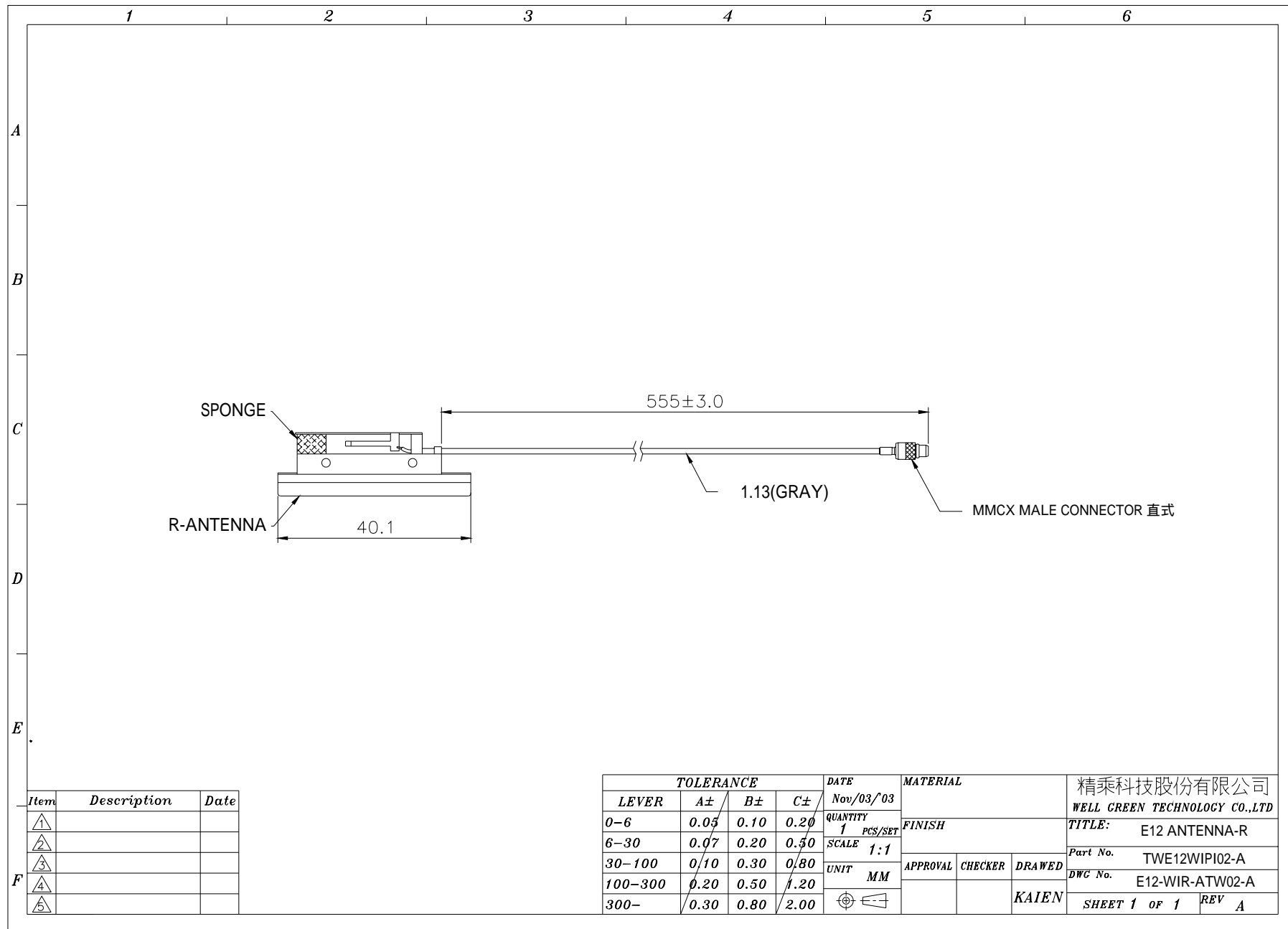
Manager	Chief	Engineer

Check	Responser

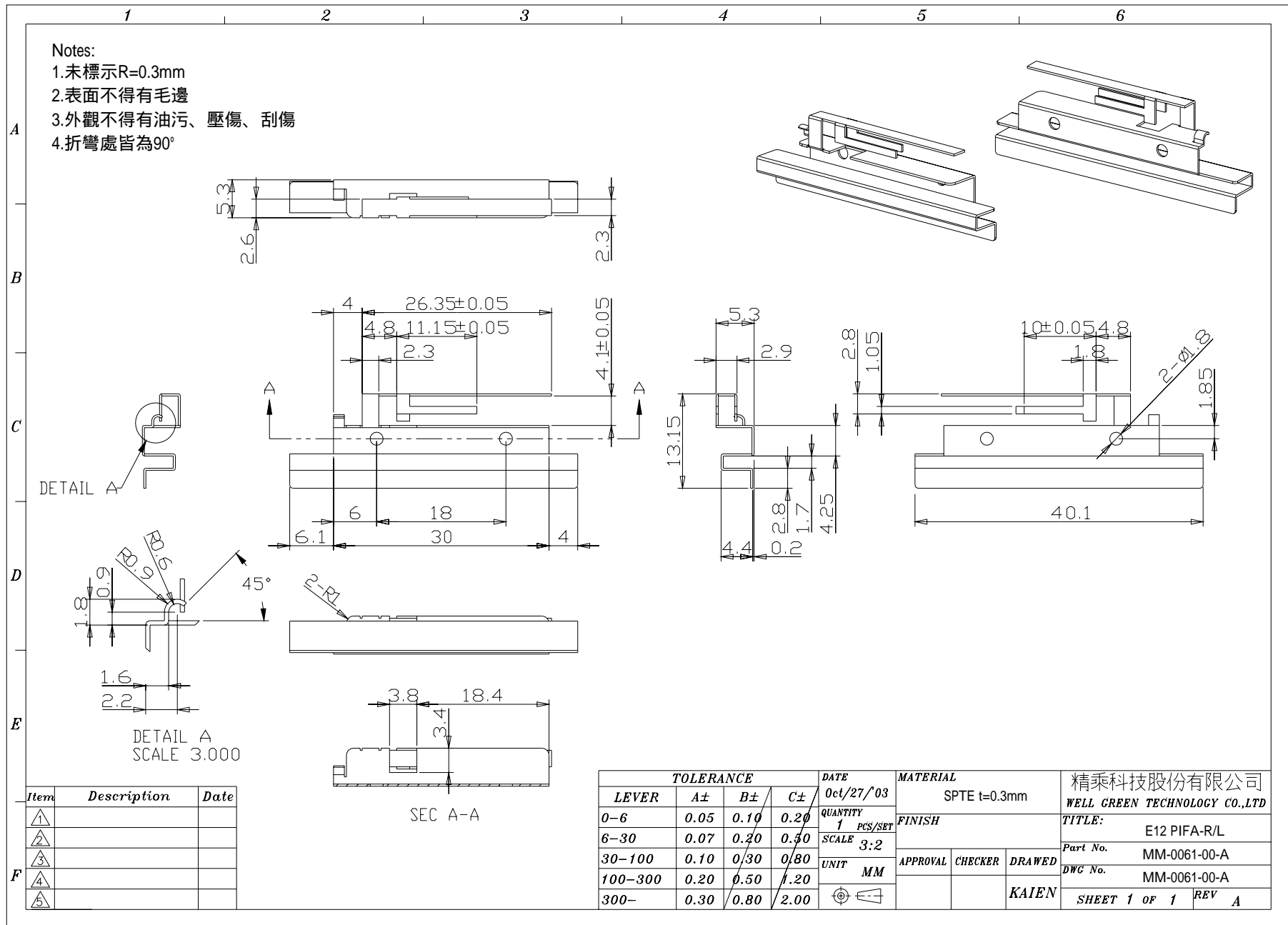
 精乘科技股份有限公司
Well Green Technology Co., Ltd.

桃園縣平鎮市民族路雙連二段 118 巷 51 弄 20 號
No. 20, Alley51 ,Lane 118,ShuangLian Sec.2,Mintzu Rd.,
PingJen City, TaoYuan Hsien, Taiwan, R.O.C
TEL: +886-3-420-6428 ; FAX: +886-3-420-6418

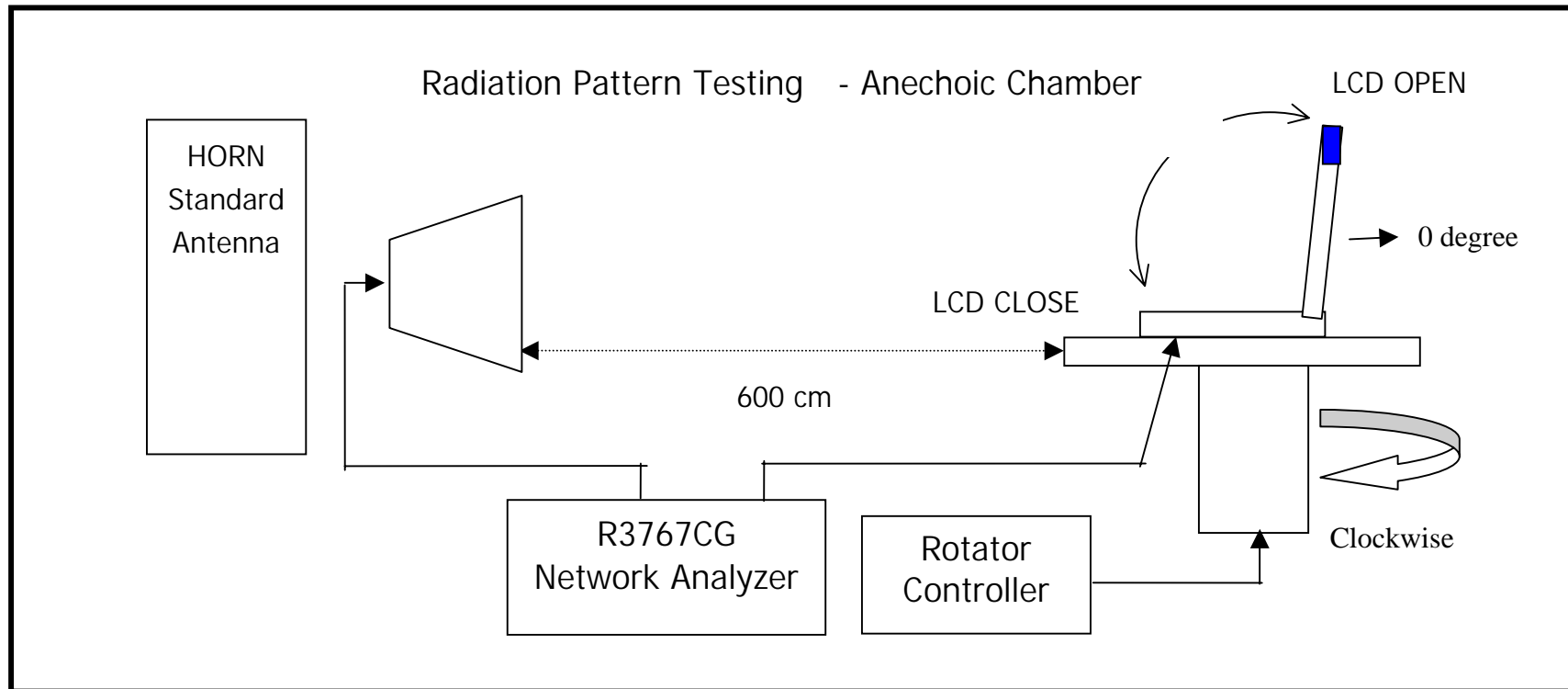
一、成品圖



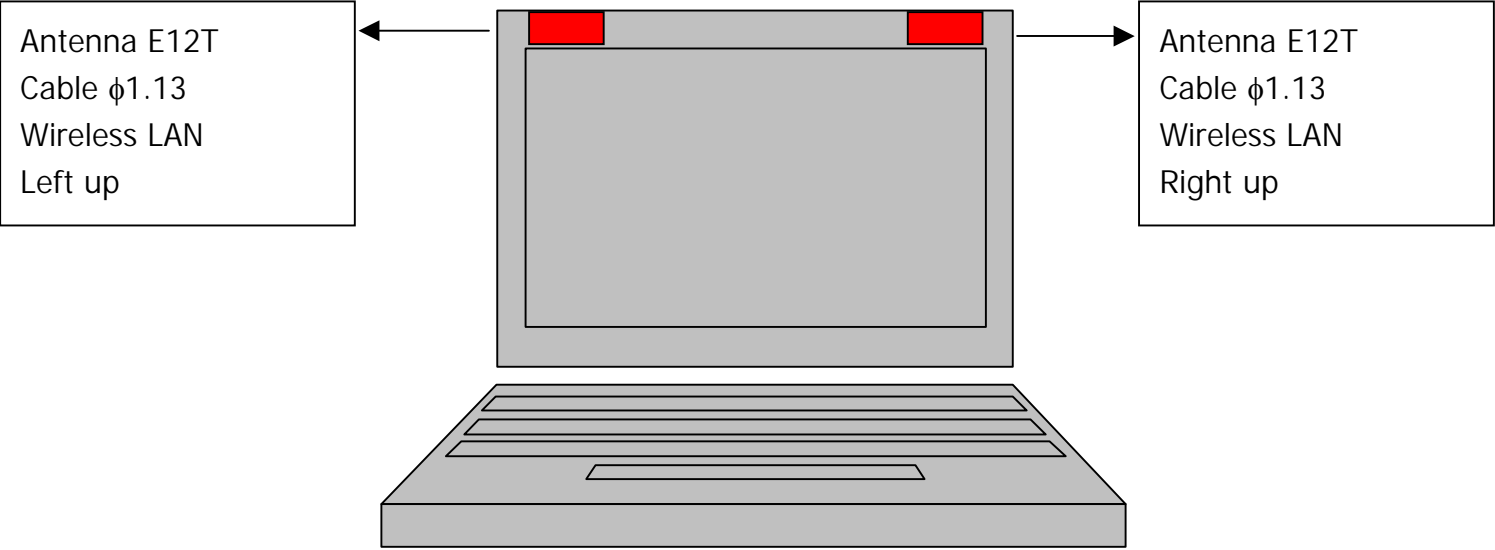
二、零件圖



三、 Antenna Testing Conditions: 1. Testing set up

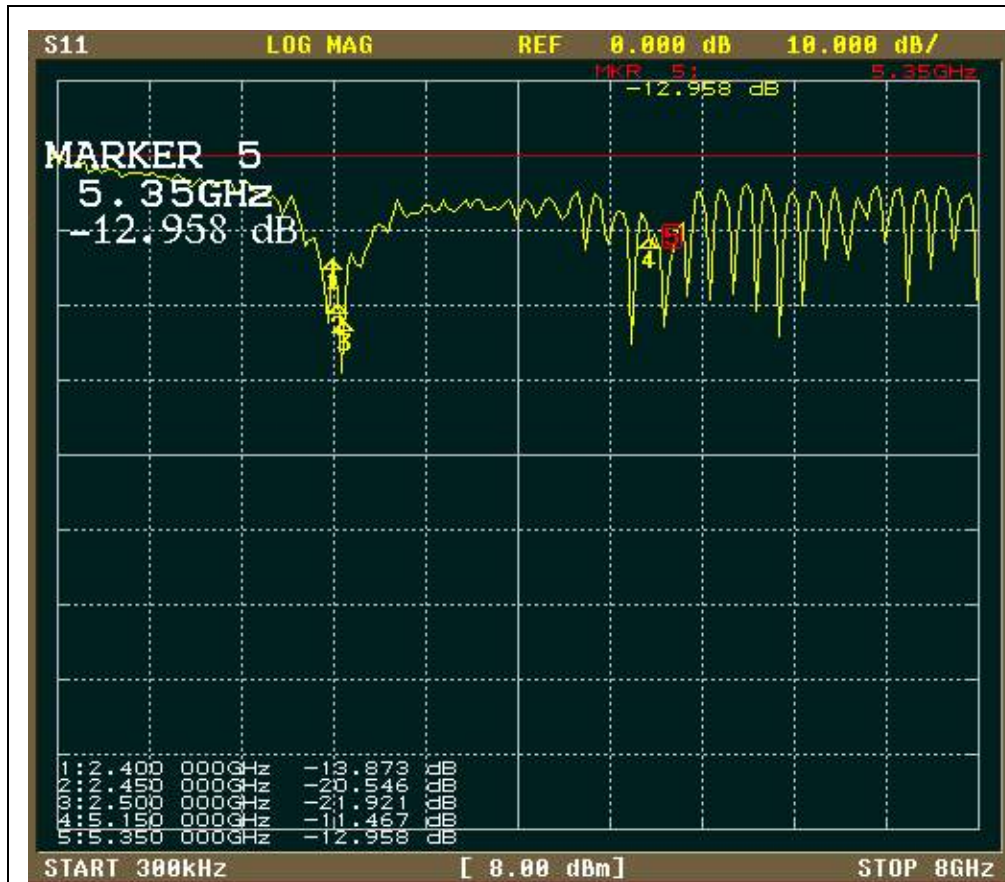


2. Mechanical dimensions



四、電氣特性 (Antenna Electricity Characteristics) :

1. Return Loss



Antenna	Center freg. @MHz	BW @MHz	Return Loss		
			2.4GHz	2.45GHz	2.5GHz
E12T	2450		-13.87	-20.54	-21.92

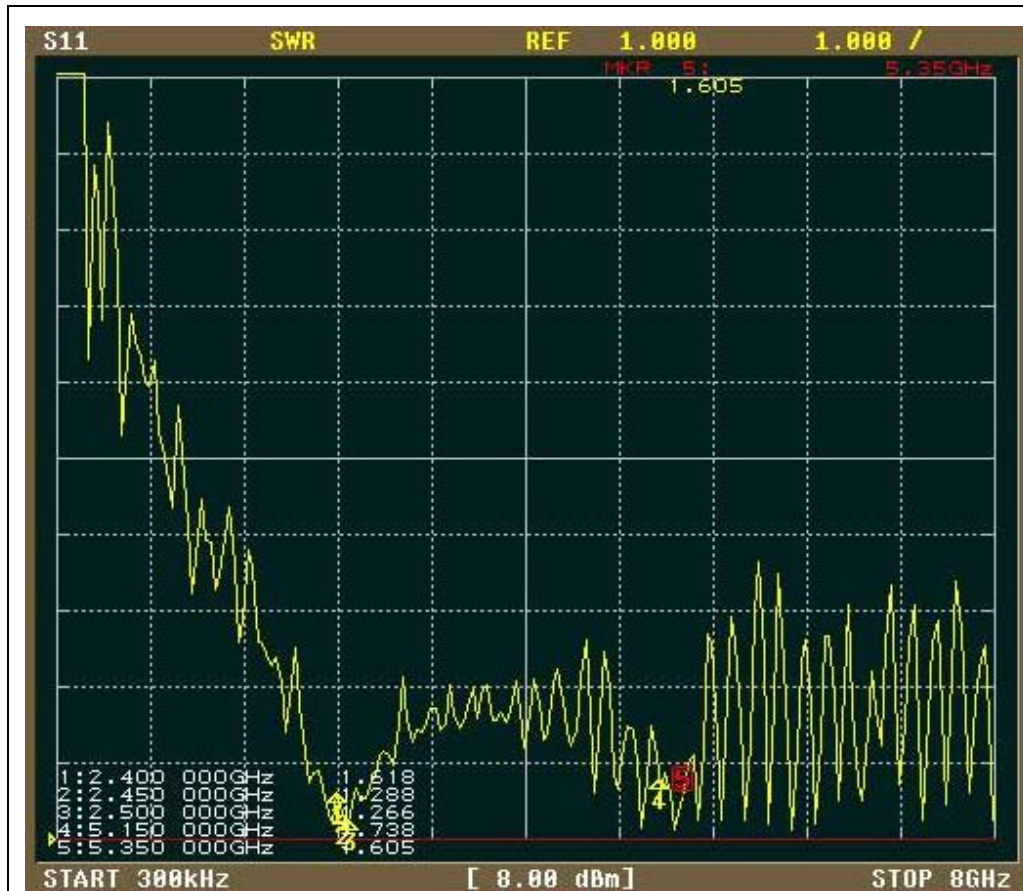
精乘科技股份有限公司
Well Green Technology
CO., Ltd

P/N : TWE12WIPI02A

Frequency Band : 2.4~2.5GHz

Date : 25 NOV.,2003

2. VSWR



Antenna	Center freg. @MHz	BW @MHz	VSWR		
			2.4GHz	2.45GHz	2.5GHz
E12T	2450		1.61	1.28	1.26

精乘科技股份有限公司
Well Green Technology
CO., Ltd

P/N : TWE12WIPI02A

Frequency Band : 2.4~2.5GHz

Date : 25 NOV.,2003

3. Smith Chart



精乘科技股份有限公司
Well Green Technology
CO., Ltd

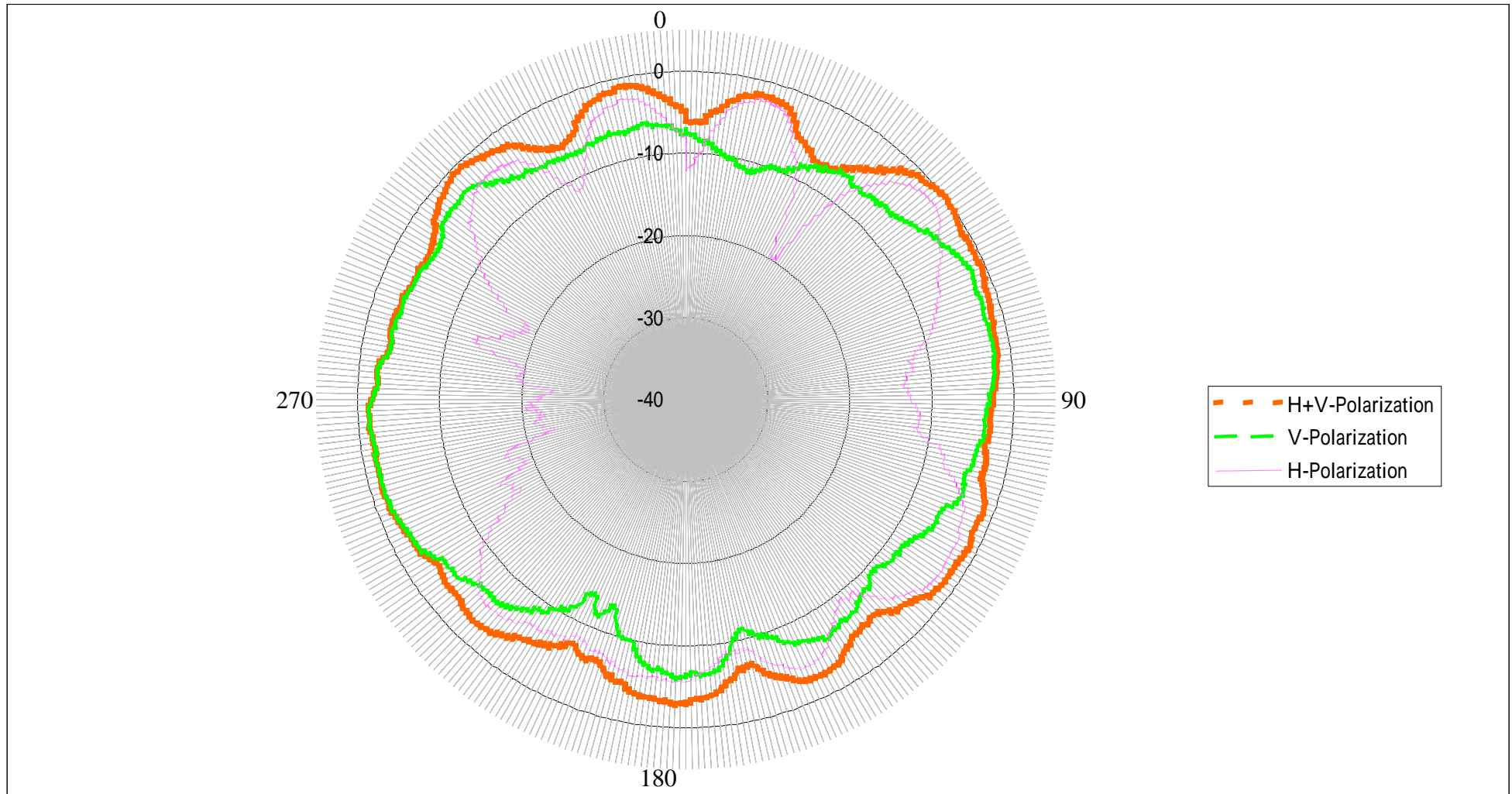
P/N : TWE12WIPI02A

Frequency Band : 2.4~2.5GHz

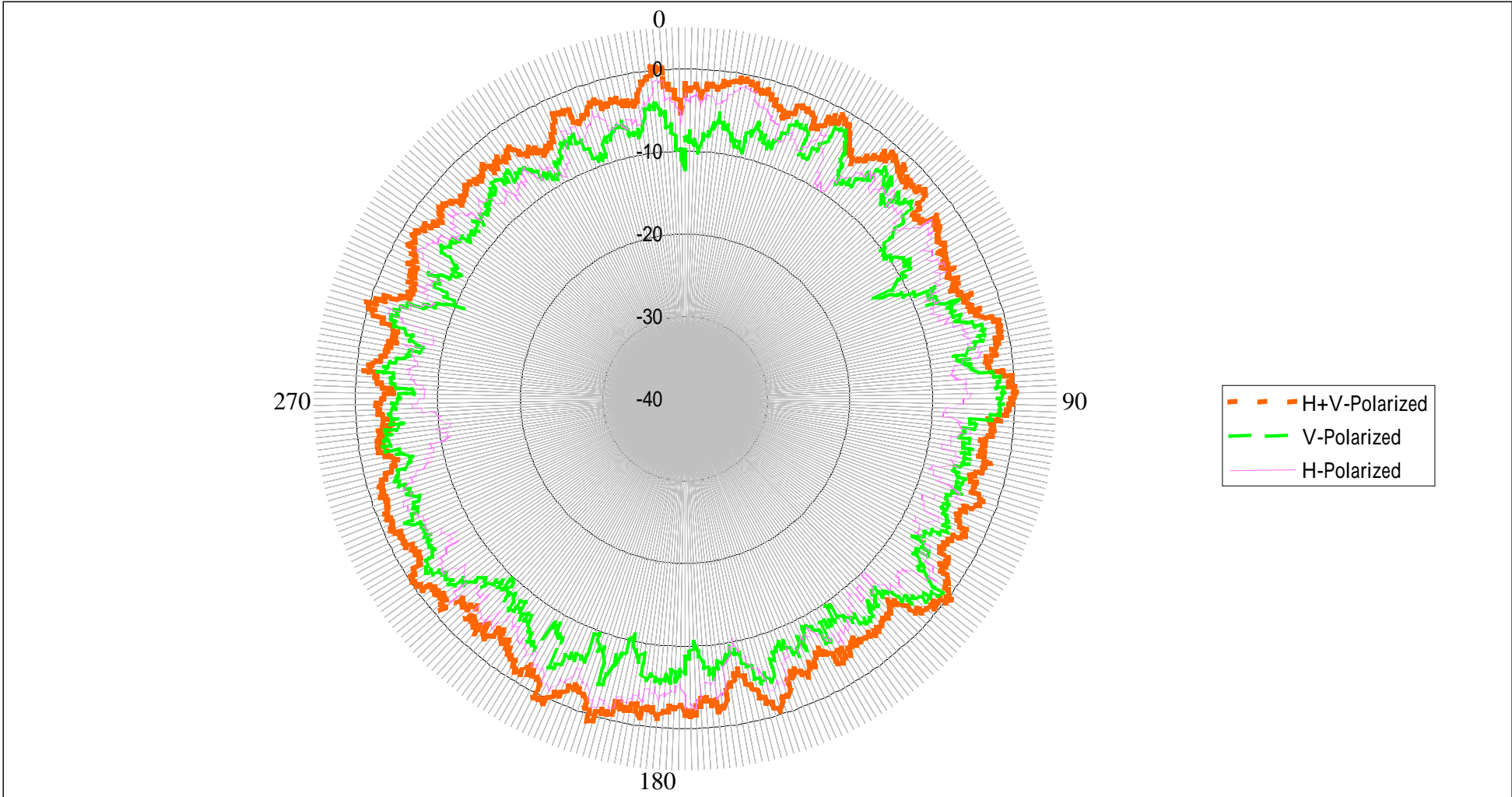
Date : 25 NOV.,2003

五、Free Space 天線輻射場形：

1. Radiation Pattern of XY Plane (Azimuth)-2.45GHz



2. Radiation Pattern of XY Plane (Azimuth)-5.25GHz



3. Peak Gain and Average Gain

Antenna	Gain of XY Plane (Azimuth)		
	Polarization		2.45GHz
E12T	V	Peak	-1.31
		Average	-5.08
	H	Peak	-1.42
		Average	-6.51
	H+V	Peak	0.07
		Average	-2.73

Antenna	Gain of XY Plane (Azimuth)		
	Polarization		5.25GHz
E12T	V	Peak	-0.88
		Average	-5.71
	H	Peak	-0.92
		Average	-5.32
	H+V	Peak	0.90
		Average	-2.50

六、 SPECIFICATIONS: Electrical Properties

Frequency Range	: 2.4~2.5GHz
Impedance	: 50Ohms nominal
VSWR	: 2.0
Peak Gain	: -5.0dBi peak gain 3dBi
Standard Connector	: I-PEX&MMCX Female Connector