

# APPROVAL SHEET

For : 倫飛電腦股份有限公司  
Twinhead International Computer, Inc.

MODEL : E12T

---

Wgt P/N : TWE12WIPI01A

---

DATE : 25 NOV.,2003

---

DESCRIPTION : E12T Wireless PIFA Antenna

---

CUSTOMER P/N : PIFA ANTENNA-L C3812-E12T

---

Manager	Chief	Engineer

Check	Responser

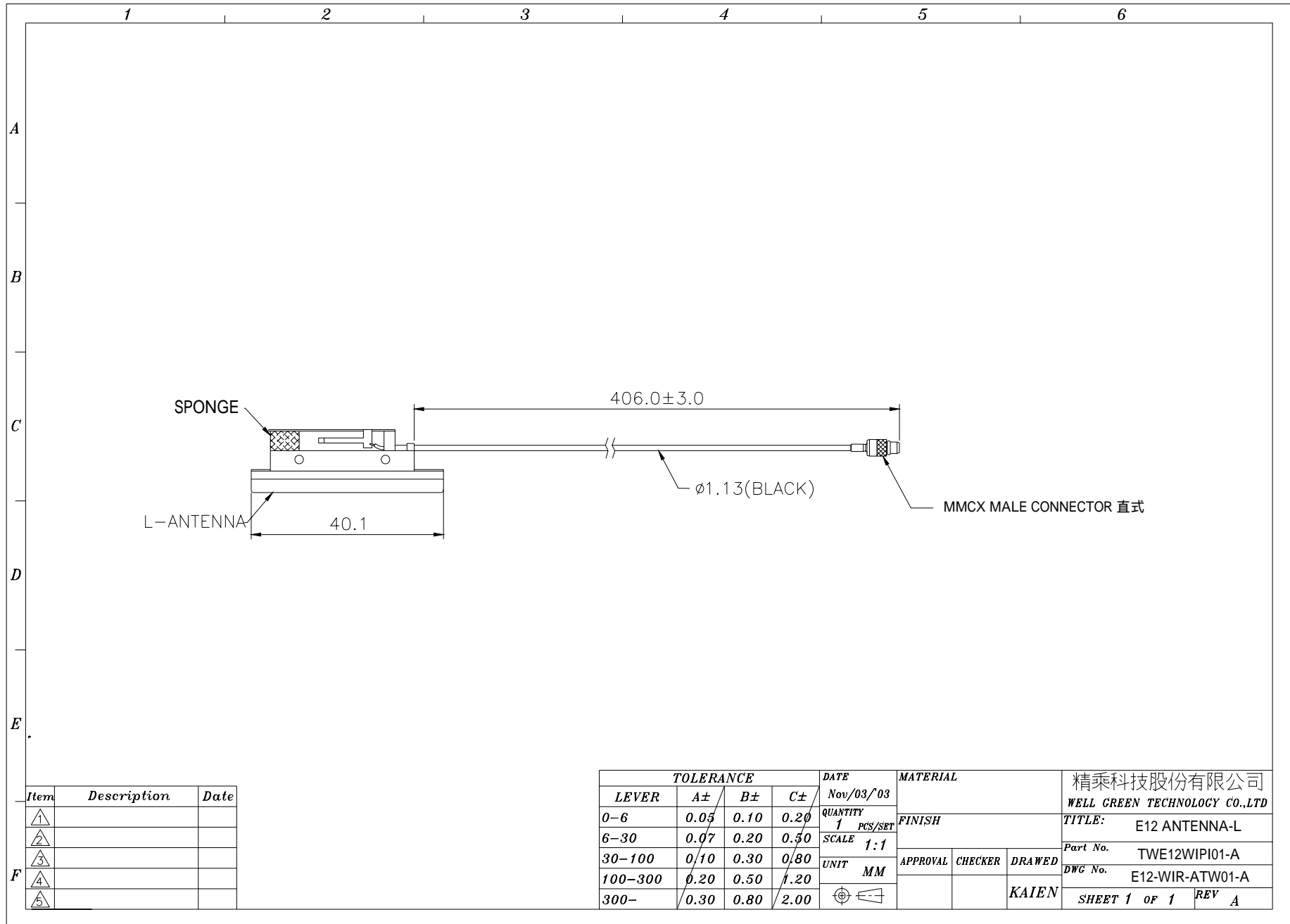


精乘科技股份有限公司

Well Green Technology Co., Ltd.

桃園縣平鎮市民族路雙連二段 118 巷 51 弄 20 號  
No. 20, Alley51 ,Lane 118,ShuangLian Sec.2,Mintzu Rd.,  
PingJen City, TaoYuan Hsien, Taiwan, R.O.C  
TEL: +886-3-420-6428 ; FAX: +886-3-420-6418

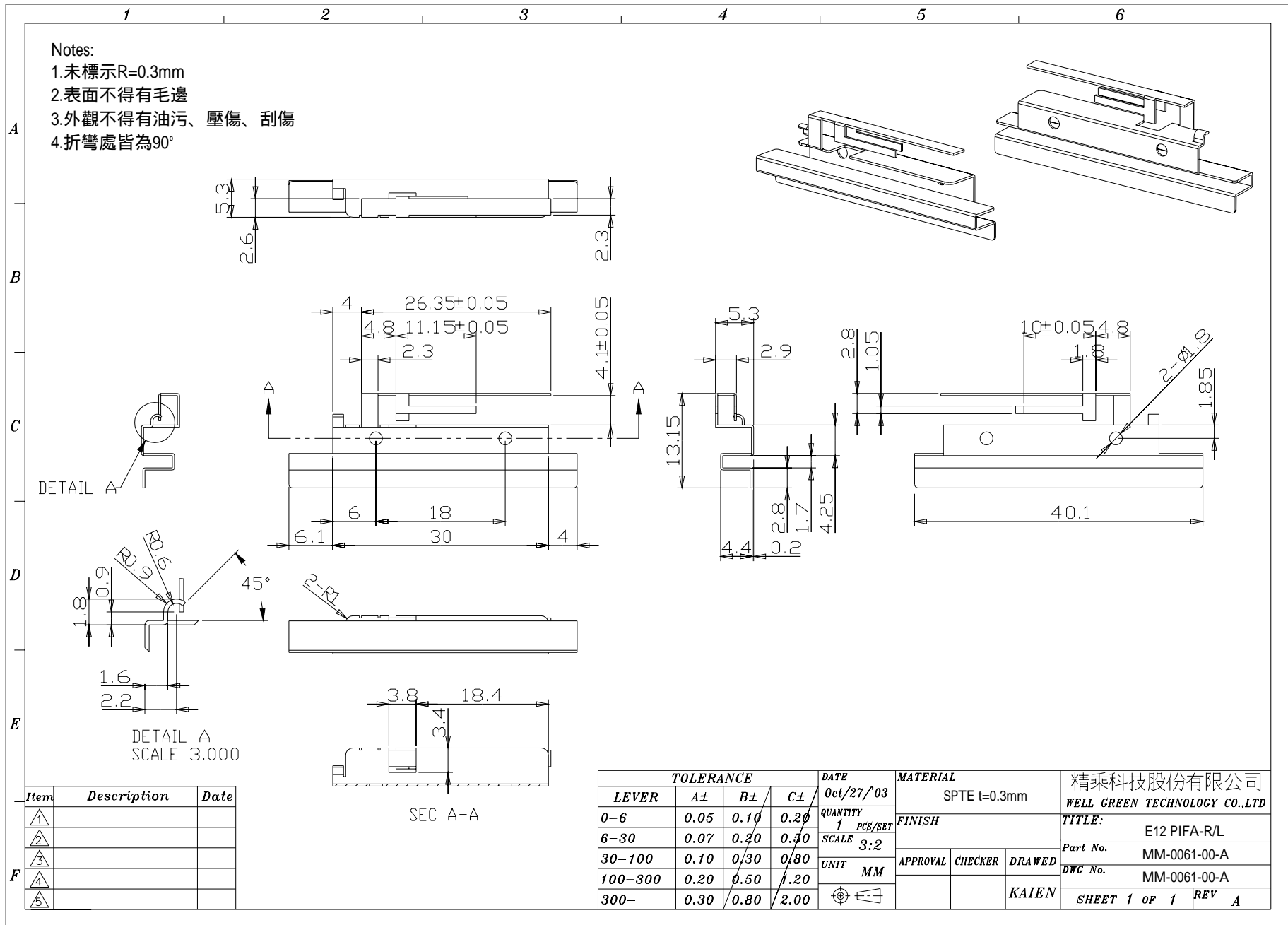
# 一、成品圖



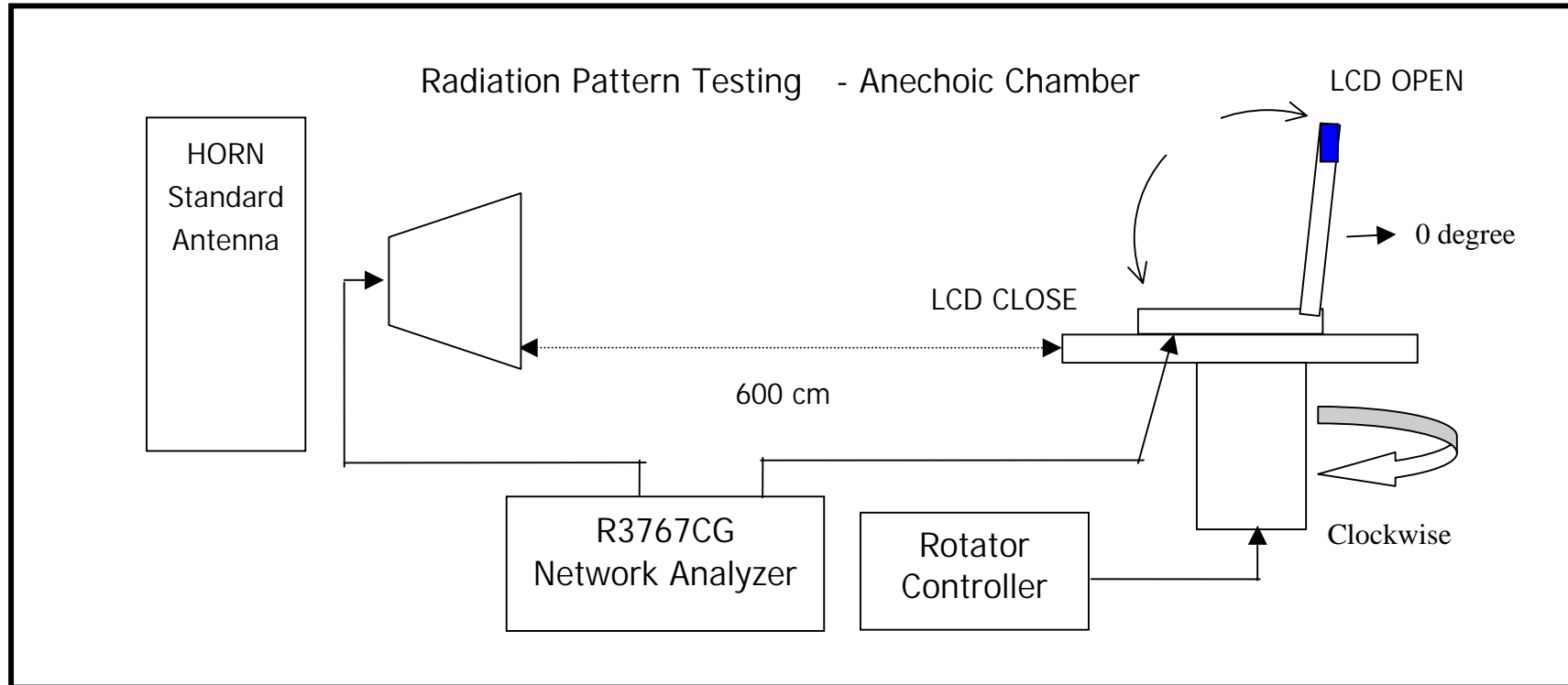
Item	Description	Date
△1		
△2		
△3		
△4		
△5		

TOLERANCE			DATE	MATERIAL	精乘科技股份有限公司 WELL GREEN TECHNOLOGY CO.,LTD	
LEVER	A±	B±	C±	Nov/03/03		
0-6	0.05	0.10	0.20	Nov/03/03	TITLE: E12 ANTENNA-L	
6-30	0.07	0.20	0.50	QUANTITY 1 PCS/SET		
30-100	0.10	0.30	0.80	SCALE 1:1	Part No. TWE12WIPI01-A	
100-300	0.20	0.50	1.20	UNIT MM	DWG No. E12-WIR-ATW01-A	
300-	0.30	0.80	2.00	APPROVAL	CHECKER	DRAWN KAIEN

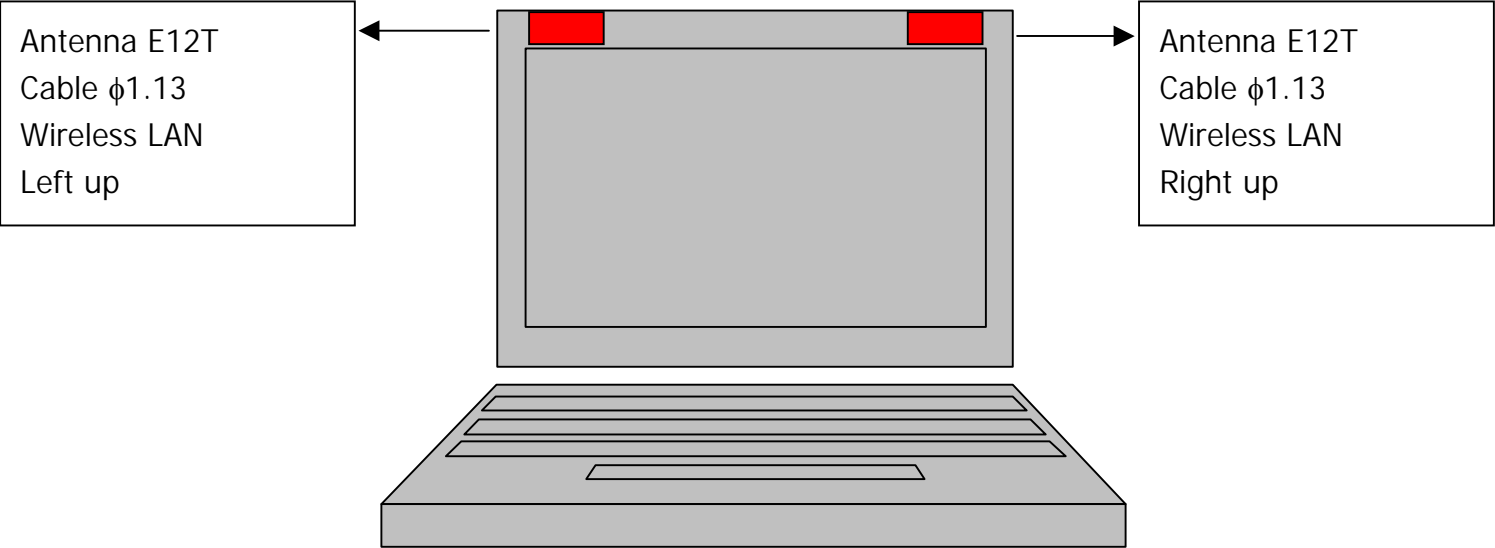
## 二、零件圖



### 三、 Antenna Testing Conditions: 1. Testing set up

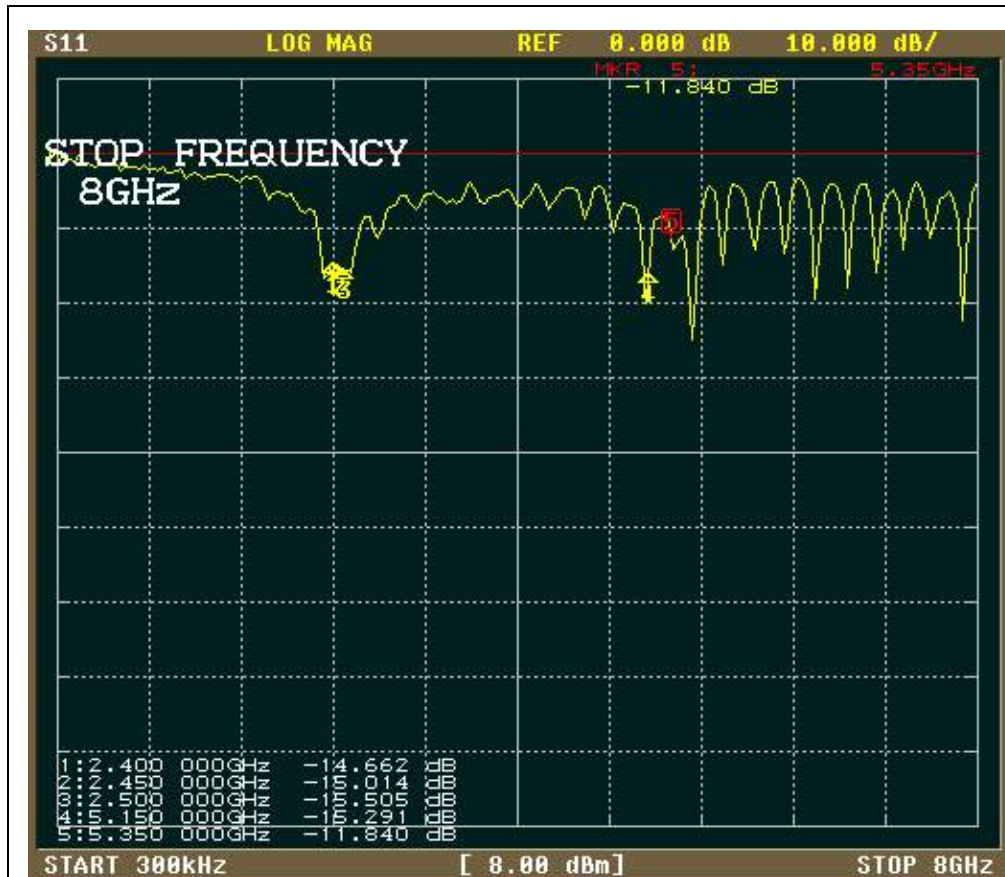


## 2. Mechanical dimensions



#### 四、電氣特性 ( Antenna Electricity Characteristics ) :

##### 1. Return Loss



Antenna	Center freg. @MHz	BW @MHz	Return Loss		
			2.4GHz	2.45GHz	2.5GHz
E12T	2450		-14.62	-15.01	-15.50

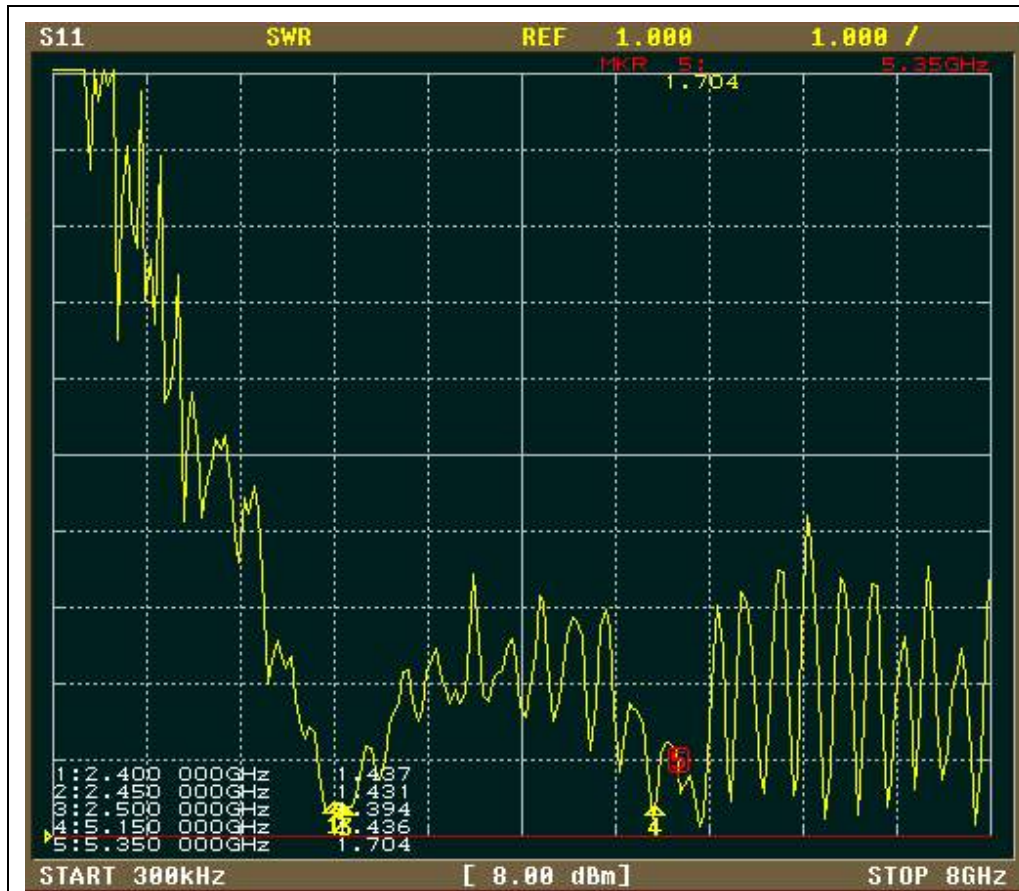
精乘科技股份有限公司  
Well Green Technology  
CO., Ltd

P/N : TWE12WIPI01A

Frequency Band : 2.4~2.5GHz

Date : 25 NOV.,2003

## 2. VSWR



Antenna	Center freg. @MHz	BW @MHz	VSWR		
			2.4GHz	2.45GHz	2.5GHz
E12T	2450		1.43	1.43	1.39

精乘科技股份有限公司

Well Green Technology  
CO., Ltd

P/N : TWE12WIPI01A

Frequency Band : 2.4~2.5GHz

Date : 25 NOV.,2003

### 3. Smith Chart



精乘科技股份有限公司  
Well Green Technology  
CO., Ltd

P/N : TWE12WIPI01A

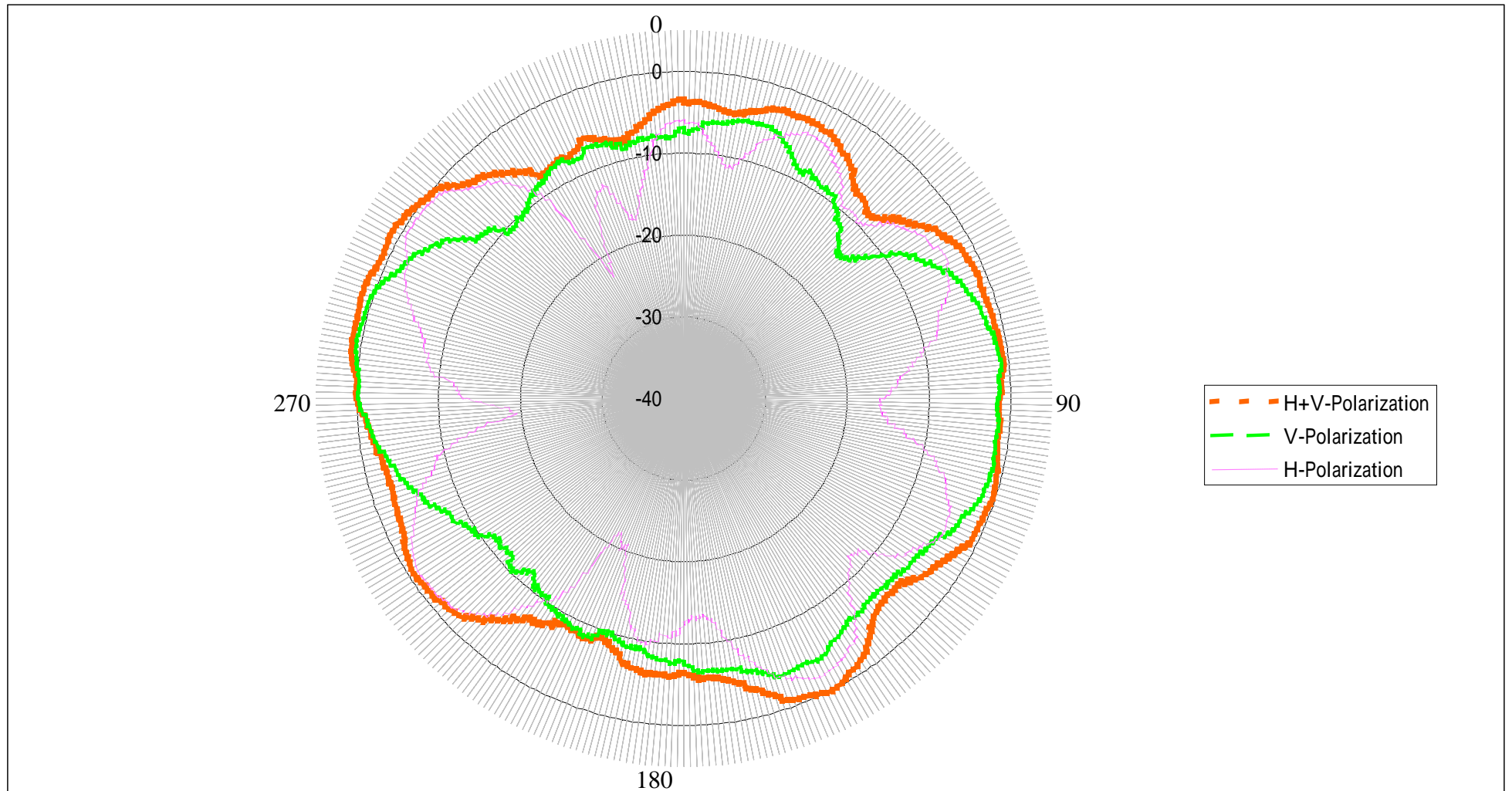
Frequency Band : 2.4~2.5GHz

Date : 25 NOV.,2003

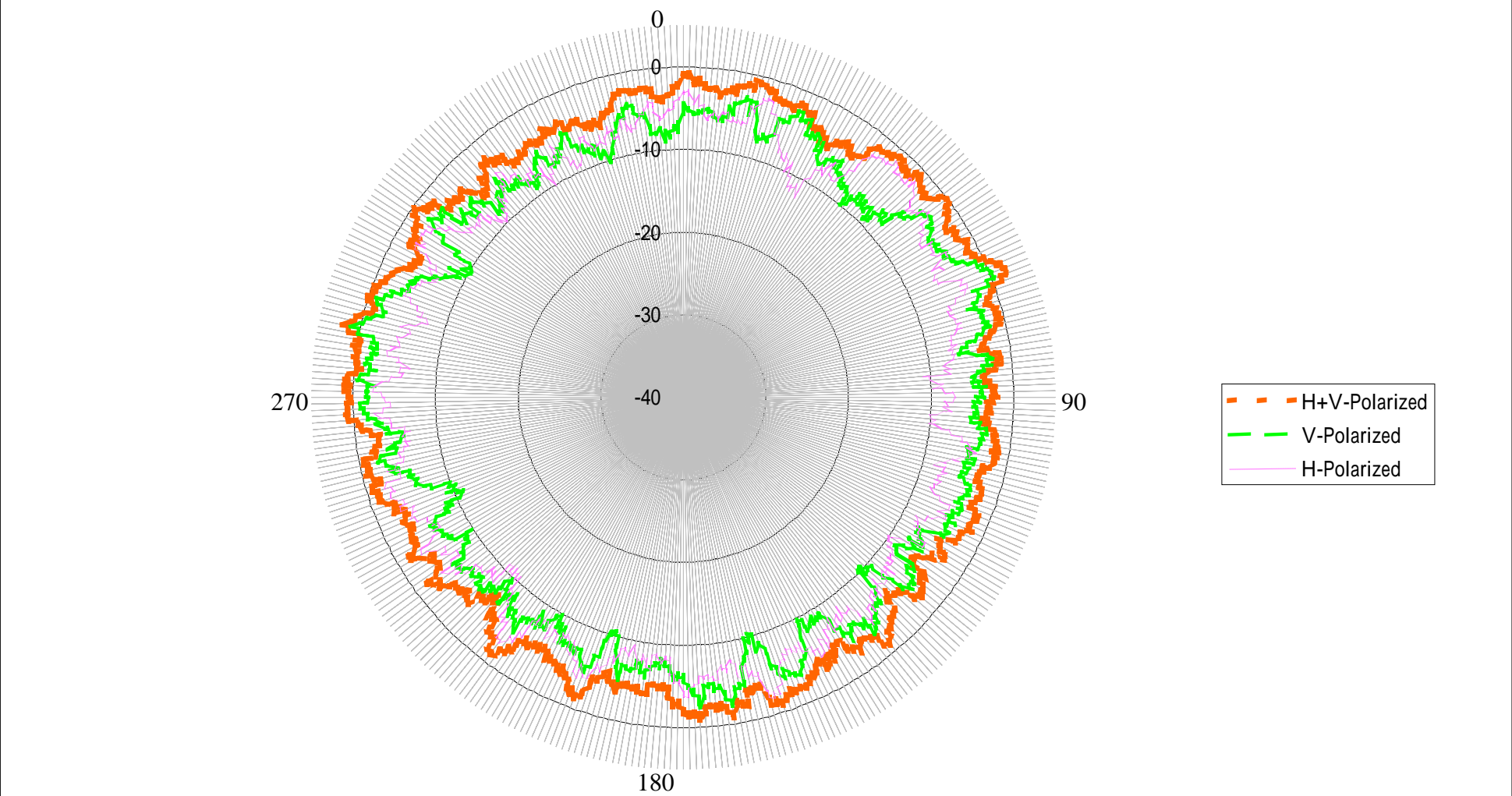


## 五、Free Space 天線輻射場形：

### 1. Radiation Pattern of XY Plane (Azimuth)-2.45GHz



## 2. Radiation Pattern of XY Plane (Azimuth)-5.25GHz



### 3. Peak Gain and Average Gain

Antenna	Gain of XY Plane (Azimuth)		
	Polarization		2.45GHz
E12T	V	Peak	0.62
		Average	-4.74
	H	Peak	-0.55
		Average	-6.19
	H+V	Peak	1.41
		Average	-2.39

Antenna	Gain of XY Plane (Azimuth)		
	Polarization		5.25GHz
E12T	V	Peak	1.14
		Average	-5.03
	H	Peak	-1.62
		Average	-5.72
	H+V	Peak	2.16
		Average	-2.35

## 六、 SPECIFICATIONS: Electrical Properties

Frequency Range	: 2.4~2.5GHz
Impedance	: 50Ohms nominal
VSWR	: 2.0
Peak Gain	: -5.0dBi peak gain 3dBi
Standard Connector	: I-PEX&MMCX Female Connector