



RF EXPOSURE LAB, LLC

2867 Progress Place, Suite 4D • Escondido, CA 92029 • U.S.A.

TEL (760) 737-3131 • FAX (760) 737-9131

<http://www.rfexposurelab.com>

CERTIFICATE OF COMPLIANCE SAR EVALUATION

Motion Computing
8601 Ranch Road 2222, Building 2
Austin, TX 78730

Dates of Test: March 8-11, 2006
Test Report Number: SAR.20060303

FCC ID:	Q3QWM3B2915ABG
IC Certificate:	4587A-LE1600
Model(s):	T004
Test Sample:	Production Unit
Serial No.:	20401001
Equipment Type:	Tablet PC
Classification:	Portable Transmitter Next to Body
TX Frequency Range:	2412 - 2462 MHz, 5180 - 5240 MHz, 5260 - 5320 MHz, 5745 - 5825 MHz
Frequency Tolerance:	2.4 GHz - ± 25 ppm, 5 GHz - ± 20 ppm, BT - ± 75 kHz
Maximum RF Output:	2.4 GHz-18 dBm, 5.2 GHz-14 dBm, 5.8 GHz-14 dBm, Bluetooth-4 dBm Conducted
Signal Modulation:	DSSS/OFDM/Bluetooth
Antenna Type (Length):	(2) Internal, Part Number DC330018100
Battery:	Sanyo Model BATEDX20L4
Application Type:	Certification
FCC Rule Parts:	Part 15E
IC Specification:	RSS-102

This wireless mobile and/or portable device has been shown to be compliant for localized specific absorption rate (SAR) for uncontrolled environment/general exposure limits specified in ANSI/IEEE Std. C95.1-1999 and had been tested in accordance with the measurement procedures specified in IEEE 1528-2003, OET Bulletin 65 Supp. C, RSS-102 and Safety Code 6 (See test report).

I attest to the accuracy of the data. All measurements were performed by myself or were made under my supervision and are correct to the best of my knowledge and belief. I assume full responsibility for the completeness of these measurements and vouch for the qualifications of all persons taking them.

RF Exposure Lab, LLC certifies that no party to this application has been denied FCC benefits pursuant to Section 5301 of the Anti-Drug Abuse Act of 1988, 21 U.S.C. 853(a).

Jay M. Moulton
Vice President



Certificate # 2387.01

Table of Contents

1.	Introduction	3
	SAR Definition [5].....	3
2.	SAR Measurement Setup	4
	Robotic System.....	4
	System Hardware	4
	System Description	4
	E-Field Probe ALS-E-020	5
3.	Robot Specifications	7
4.	Probe and Dipole Calibration	8
5.	Phantom & Simulating Tissue Specifications.....	9
	SAM Phantom.....	9
	Brain & Muscle Simulating Mixture Characterization	9
	Device Holder	9
6.	Definition of Reference Points.....	10
	Ear Reference Point.....	10
	Device Reference Points	10
7.	Test Configuration Positions	11
	Positioning for Cheek/Touch [5].....	11
	Positioning for Ear / 15° Tilt [5].....	12
	Body Worn Configurations	13
8.	ANSI/IEEE C95.1 – 1999 RF Exposure Limits [2].....	14
	Uncontrolled Environment.....	14
	Controlled Environment	14
9.	Measurement Uncertainty	15
10.	System Validation	16
	Tissue Verification.....	16
	Test System Verification	17
11.	SAR Test Data Summary	18
	Procedures Used To Establish Test Signal.....	18
	Device Test Condition.....	18
	SAR Data Summary – 2450 MHz Body – 11b	19
	SAR Data Summary – 2450 MHz Body – 11g	20
	SAR Data Summary – 5210 MHz Body – 11a	21
	SAR Data Summary – 5290 MHz Body – 11a	22
	SAR Data Summary – 5800 MHz Body – 11a	23
12.	Test Equipment List	24
13.	Conclusion	25
14.	References.....	26
	Appendix A – System Validation Plots and Data	27
	Appendix B – SAR Test Data Plots.....	45
	Appendix C – SAR Test Setup Photos	180
	Appendix D – Probe Calibration Data Sheets.....	190
	Appendix E – Dipole Calibration Data Sheets	221
	Appendix F – Phantom Calibration Data Sheets	243

1. Introduction

This measurement report shows compliance of the Motion Computing Model T004 FCC ID: Q3QWM3B2915ABG with FCC Part 2, 1093, ET Docket 93-62 Rules for mobile and portable devices and IC Certificate: 4587A-LE1600 with RSS102 & Safety Code 6. The FCC have adopted the guidelines for evaluating the environmental effects of radio frequency radiation in ET Docket 93-62 on August 6, 1996 to protect the public and workers from the potential hazards of RF emissions due to FCC regulated portable devices. [1], [6]

The test procedures, as described in ANSI C95.1 – 1999 Standard for Safety Levels with Respect to Human Exposure to Radio Frequency Electromagnetic Fields, 3 kHz to 300 GHz [2], ANSI C95.3 – 2002 Recommended Practice for the Measurement of Potentially Hazardous Electromagnetic Fields [3], FCC OET Bulletin 65 Supp. C – 2001 [4], IEEE Std.1528 – 2003 Recommended Practice [5], and Industry Canada Safety Code 6 Limits of Human Exposure to Radiofrequency Electromagnetic Fields in the Frequency Range from 3kHz to 300 GHz were employed.

SAR Definition [5]

Specific Absorption Rate is defined as the time derivative (rate) of the incremental energy (dW) absorbed by (dissipated in) an incremental mass (dm) contained in a volume element (dV) of a given density (ρ).

$$SAR = \frac{d}{dt} \left(\frac{dW}{dm} \right) = \frac{d}{dt} \left(\frac{dW}{\rho dV} \right)$$

SAR is expressed in units of watts per kilogram (W/kg). SAR can be related to the electric field at a point by

$$SAR = \frac{\sigma |E|^2}{\rho}$$

where:

σ = conductivity of the tissue (S/m)

ρ = mass density of the tissue (kg/m³)

E = rms electric field strength (V/m)

2. SAR Measurement Setup

Robotic System

The measurements are conducted utilizing the ALSAS-10-U automated dosimetric assessment system. The ALSAS-10-U is designed and manufactured by Aprel Laboratories in Nepean, Ontario, Canada. The system utilizes a Robcomm 3 robot manufactured by ThermoCRS located in Michigan USA.

System Hardware

The system consists of a six axis articulated arm, controller for precise probe positioning (0.05 mm repeatability), a power supply, a teach pendant for teaching area scans, near field probe, an IBM Pentium 4™ 2.66 GHz PC with Windows XP Pro™, and custom software developed to enable communications between the robot controller software and the host operating system.

An amplifier is located on the articulated arm, which is isolated from the custom designed end effector and robot arm. The end effector provides the mechanical touch detection functionality and probe connection interface. The amplifier is functionally validated within the manufacturer's site and calibrated at NCL Calibration Laboratories. A Data Acquisition Card (DAC) is used to collect the signal as detected by the isotropic e-field probe. The DAC manufacturer calibrates the DAC to NIST standards. A formal validation is executed using all mechanical and electronic components to prove conformity of the measurement platform as a whole.

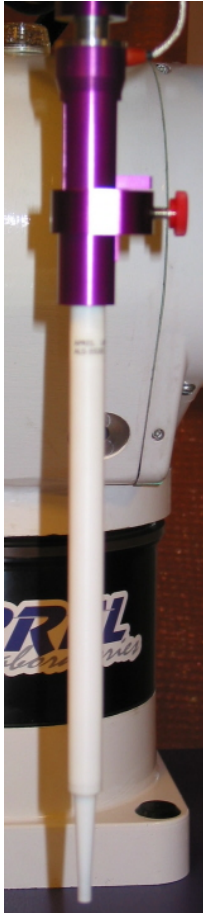
System Description

The ALSAS-10-U has been designed to measure devices within the compliance environment to meet all recognized standards. The system also conforms to standards, which are currently being developed by the scientific and manufacturing community.

The course scan resolution is defined by the operator and reflects the requirements of the standard to which the device is being tested. Precise measurements are made within the predefined course scan area and the values are logged.

The user predefines the sample rate for which the measurements are made so as to ensure that the full duty-cycle of a pulse modulation device is covered during the sample. The following algorithm is an example of the function used by the system for linearization of the output for the probe.

$$V_i = U_i + U_i^2 \bullet \frac{cf}{dcp_i}$$



The April E-Field probe is evaluated to establish the diode compression point.

A complex algorithm is then used to calculate the values within the measured points down to a resolution of 1mm. The data from this process is then used to provide the co-ordinates from which the cube scan is created for the determination of the 1 g and 10 g averages.

Cube scan averaging consists of a number of complex algorithms, which are used to calculate the one, and ten gram averages. The basis for the cube scan process is centered on the location where the maximum measured SAR value was found. When a secondary peak value is found which is within 60% of the initial peak value, the system will report this back to the operator who can then assess the need for further analysis of both the peak values prior to the one and ten-gram cube scan averaging process. The algorithm consists of 3D cubic Spline, and Lagrange extrapolation to the surface, which form the matrix for calculating the measurement output for the one and ten gram average values. The resolution for the physical scan integral is user defined with a final calculated resolution down to 1mm.

In-depth analysis for the differential of the physical scanning resolution for the cube scan analysis has been carried out, to identify the optimum setting for the probe positioning steps, and this has been determined at 8mm increments on the X, & Y planes. The reduction of the physical step increment increased the time taken for analysis but did not provide a better uncertainty or return on measured values.

The final output from the system provides data for the area scan measurements, physical and splined (1mm resolution) cube scan with physical and calculated values (1mm resolution).

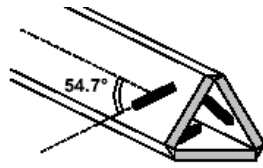
The overall uncertainty for the methodology and algorithms the ALSAS-10-U used during the SAR calculation was evaluated using the data from IEEE 1528 f3 algorithm:

$$f_3(x, y, z) = A \frac{a^2}{\frac{a^2}{4} + x'^2 + y'^2} \left(e^{-\frac{2z}{a}} + \frac{a^2}{2(a + 2z)^2} \right)$$

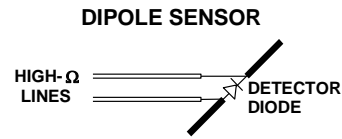
The probe used during the measurement process has been assessed to provide values for diode compression. These values are calculated during the probe calibration exercise and are used in the mathematical calculations for the assessment of SAR.

E-Field Probe ALS-E-020

The E-field probe used by RF Exposure Lab, LLC, has been fully calibrated and assessed for isotropic, and boundary effect. The probe utilizes a triangular sensor arrangement as detailed in the diagram below right.



Δ-BEAM



The SAR is assessed with the probe which moves at a default height of 5mm from the center of the diode, which is mounted to the sensor, to the phantom surface (Z height). The diagram above right shows how the center of the sensor is defined with the location of the diode placed at the center of the dipole. The 5mm default in the Z axis is the optimum height for assessing SAR where the boundary effect is at its least, with the probe located closest to the phantom surface (boundary).

3. Robot Specifications

Specifications

Positioner: ThermoCRS, Robot Model: Robocomm 3
Repeatability: 0.05 mm
No. of axis: 6

Data Acquisition Card (DAC) System

Cell Controller

Processor: Pentium 4™
Clock Speed: 2.66 GHz
Operating System: Windows XP Pro™

Data Converter

Features: Signal Amplifier, End Effector, DAC
Software: ALSAS 10-U Software

E-Field Probe

Model: ALS-E-020
Serial Number: RFE-215
Construction: Triangular Core Touch Detection System
Frequency: 10MHz to 6GHz

Phantom

Phantom: Uniphantom, Right Phantom, Left Phantom



4. Probe and Dipole Calibration

See Appendix D and E.

5. Phantom & Simulating Tissue Specifications

SAM Phantom



The Aprel system utilizes three separate phantoms. Each phantom for SAR assessment testing is a low loss dielectric shell, with shape and dimensions derived from the anthropomorphic data of the 90th percentile adult male head dimensions as tabulated by the US Army. The SAM phantom shell is bisected along the mid sagittal plane into right and left halves. The perimeter sidewalls of each phantom half is extended to allow filling with liquid to a depth of 15 cm that is sufficient to minimize reflections from the upper surface [5]. See photos in Appendix C.

Brain & Muscle Simulating Mixture Characterization

The brain and muscle mixtures consist of a glycol based chemical and saline solution or a sugar and water based solution. The mixture is calibrated to obtain proper dielectric constant (permittivity) and conductivity of the desired tissue. The head tissue dielectric parameters recommended by the IEEE SCC-34/SC-2 have been incorporated in the following tables. Other head and body tissue parameters that have not been specified in P1528 are derived from the issue dielectric parameters computed from the 4-Cole-Cole equations.

Table 5.1 Typical Composition of Ingredients for Tissue

Ingredients		Simulating Tissue		
		2450 MHz Muscle	5250 MHz Muscle	5800 MHz Muscle
Mixing Percentage				
Water		73.20	58.85	59.00
DGBE		26.70	0.00	0.00
Sugar		0.00	41.00	40.6
Salt		0.04	0.00	0.00
Bacteriacide		0.00	0.05	0.10
HEC		0.00	0.10	0.30
Dielectric Constant	Target	52.70	48.96	48.20
Conductivity (S/m)	Target	1.95	5.35	6.00

Device Holder



In combination with the SAM phantom, the mounting device enables the rotation of the mounted transmitter in spherical coordinates whereby the rotation point is the ear opening. The devices can easily, accurately, and repeatably be positioned according to the FCC specifications. The device holder can be locked at different phantom locations (left head, right head, and uni-phantom).

6. Definition of Reference Points

Ear Reference Point

Figure 6.2 shows the front, back and side views of the SAM Phantom. The point “M” is the reference point for the center of the mouth, “LE” is the left ear reference point (ERP), and “RE” is the right ERP. The ERPs are 15mm posterior to the entrance to the ear canal (EEC) along the B-M line (Back-Mouth), as shown in Figure 6.1. The plane passing through the two ear canals and M is defined as the Reference Plane. The line N-F (Neck-Front) is perpendicular to the reference plane and passing through the RE (or LE) is called the Reference Pivoting Line (see Figure 6.1). Line B-M is perpendicular to the N-F line. Both N-F and B-M lines are marked on the external phantom shell to facilitate handset positioning [5].

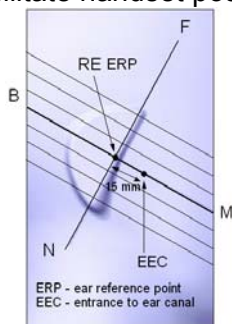


Figure 6.1 Close-up side view of ERP's



Figure 6.2 Front, back and side view of SAM

Device Reference Points

Two imaginary lines on the device need to be established: the vertical centerline and the horizontal line. The test device is placed in a normal operating position with the “test device reference point” located along the “vertical centerline” on the front of the device aligned to the “ear reference point” (See Fig. 6.3). The “test device reference point” is then located at the same level as the center of the ear reference point. The test device is positioned so that the “vertical centerline” is bisecting the front surface of the device at it’s top and bottom edges, positioning the “ear reference point” on the outer surface of both the left and right head phantoms on the ear reference point [5].

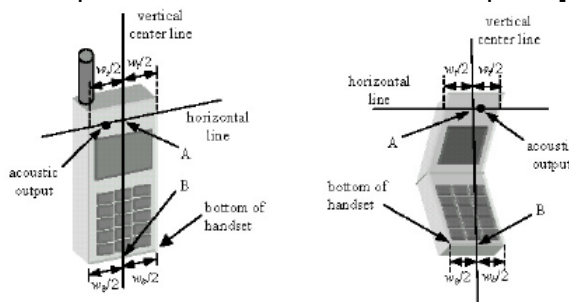


Figure 6.3 Handset Vertical Center & Horizontal Line Reference Points

7. Test Configuration Positions

Positioning for Cheek/Touch [5]

1. Position the device close to the surface of the phantom such that point A is on the (virtual) extension of the line passing through points RE and LE on the phantom (see Figure 7.1), such that the plane defined by the vertical center line and the horizontal line of the device is approximately parallel to the sagittal plane of the phantom.

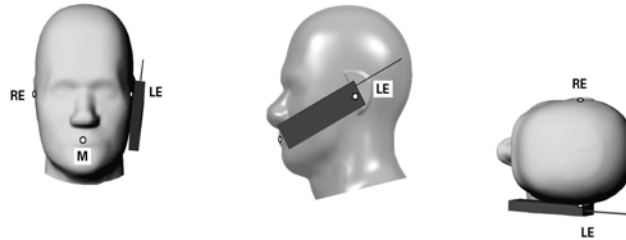


Figure 7.1 Front, Side and Top View of Cheek/Touch Position

2. Translate the device towards the phantom along the line passing through RE and LE until the device touches the ear.
3. While maintaining the device in this plane, rotate it around the LE-RE line until the vertical centerline is in the plane normal to MB-NF including the line MB (called the reference plane).
4. Rotate the device around the vertical centerline until the device (horizontal line) is symmetrical with respect to the line NF.
5. While maintaining the vertical centerline in the reference plane, keeping point A on the line passing through RE and LE and maintaining the device contact with the ear, rotate the device about the line NF until any point on the device is in contact with a phantom point below the ear (cheek). See Figure 7.2.

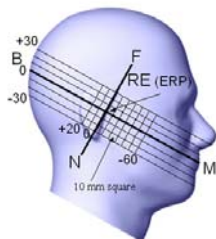


Figure 7.2 Side view w/ relevant markings

Positioning for Ear / 15° Tilt [5]

With the test device aligned in the Cheek/Touch Position”:

1. While maintaining the orientation of the device, retracted the device parallel to the reference plane far enough to enable a rotation of the device by 15 degrees.
2. Rotate the device around the horizontal line by 15 degrees.
3. While maintaining the orientation of the device, move the device parallel to the reference plane until any part of the device touches the head. (In this position, point A is located on the line RE-LE). The tilted position is obtained when the contact is on the pinna. If the contact is at any location other than the pinna, the angle of the device shall be reduced. The tilted position is obtained when any part of the device is in contact with the ear as well as a second part of the device is in contact with the head (see Figure 7.3).

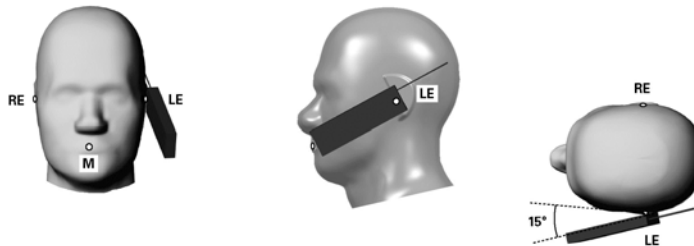


Figure 7.3 Front, Side and Top View of Ear/15° Tilt Position

Body Worn Configurations

Body-worn operating configurations are tested with the accessories attached to the device and positioned against a flat phantom in a normal use configuration. A device with a headset output is tested with a headset connected to the device. Body dielectric parameters are used.

Accessories for Body-worn operation configurations are divided into two categories: those that do not contain metallic components and those that do contain metallic components. When multiple accessories that do not contain metallic components are supplied with the device, the device is tested with only the accessory that dictates the closest spacing to the body. Then, when multiple accessories that contain metallic components are supplied with the device, the device is tested with each accessory that contains a unique metallic component. If multiple accessories share an identical metallic component (i.e. the same metallic belt-clip used with different holsters with no other metallic components) only the accessory that dictates the closest spacing to the body is tested.

Body-worn accessories may not always be supplied or available as options for some devices intended to be authorized for body-worn use. In this case, a test configuration where a separation distance between the back of the device and the flat phantom is used. All test position spacings are documented.

Transmitters that are designed to operate in front of a person's face, as in push-to-talk configurations, are tested for SAR compliance with the front of the device positioned to face the flat phantom. For devices that are carried next to the body such as a shoulder, waist or chest-worn transmitters, SAR compliance is tested with the accessory(ies), including headsets and microphones, attached to the device and positioned against a flat phantom in a normal use configuration.

In all cases SAR measurements are performed to investigate the worst-case positioning. Worst-case positioning is then documented and used to perform Body SAR testing.

In order for users to be aware of the body-worn operating requirements for meeting RF exposure compliance, operating instructions and cautions statements are included in the user's manual.

8. ANSI/IEEE C95.1 – 1999 RF Exposure Limits [2]

Uncontrolled Environment

Uncontrolled Environments are defined as locations where there is the exposure of individuals who have no knowledge or control of their exposure. The general population/uncontrolled exposure limits are applicable to situations in which the general public may be exposed or in which persons who are exposed as a consequence of their employment may not be made fully aware of the potential for exposure or cannot exercise control over their exposure. Members of the general public would come under this category when exposure is not employment-related; for example, in the case of a wireless transmitter that exposes persons in its vicinity.

Controlled Environment

Controlled Environments are defined as locations where there is exposure that may be incurred by persons who are aware of the potential for exposure, (i.e. as a result of employment or occupation). In general, occupational/controlled exposure limits are applicable to situations in which persons are exposed as a consequence of their employment, who have been made fully aware of the potential for exposure and can exercise control over their exposure. This exposure category is also applicable when the exposure is of a transient nature due to incidental passage through a location where the exposure levels may be higher than the general population/uncontrolled limits, but the exposed person is fully aware of the potential for exposure and can exercise control over his or her exposure by leaving the area or by some other appropriate means.

Table 8.1 Human Exposure Limits

	UNCONTROLLED ENVIRONMENT General Population (W/kg) or (mW/g)	CONTROLLED ENVIROMENT Professional Population (W/kg) or (mW/g)
SPATIAL PEAK SAR ¹ Brain	1.60	8.00
SPATIAL AVERAGE SAR ² Whole Body	0.08	0.40
SPATIAL PEAK SAR ³ Hands, Feet, Ankles, Wrists	4.00	20.00

¹ The Spatial Peak value of the SAR averaged over any 1 gram of tissue (defined as a tissue volume in the shape of a cube) and over the appropriate averaging time.

² The Spatial Average value of the SAR averaged over the whole body.

³ The Spatial Peak value of the SAR averaged over any 10 grams of tissue (defined as a tissue volume in the shape of a cube) and over the appropriate averaging time.

9. Measurement Uncertainty

Exposure Assessment Measurement Uncertainty

Source of Uncertainty	Tolerance Value	Probability Distribution	Divisor	c_i^{-1} (1-g)	c_i^{-1} (10-g)	Standard Uncertainty (1-g) %	Standard Uncertainty (10-g) %
Measurement System							
Probe Calibration	3.5	normal	1	1	1	3.5	3.5
Axial Isotropy	3.7	rectangular	•3	$(1-cp)^{1/2}$	$(1-cp)^{1/2}$	1.5	1.5
Hemispherical Isotropy	10.9	rectangular	•3	•cp	•cp	4.4	4.4
Boundary Effect	1.0	rectangular	•3	1	1	0.6	0.6
Linearity	4.7	rectangular	•3	1	1	2.7	2.7
Detection Limit	1.0	rectangular	•3	1	1	0.6	0.6
Readout Electronics	1.0	normal	1	1	1	1.0	1.0
Response Time	0.8	rectangular	•3	1	1	0.5	0.5
Integration Time	1.7	rectangular	•3	1	1	1.0	1.0
RF Ambient Condition	3.0	rectangular	•3	1	1	1.7	1.7
Probe Positioner Mech.	0.4	rectangular	•3	1	1	0.2	0.2
Restriction							
Probe Positioning with respect to Phantom Shell	2.9	rectangular	•3	1	1	1.7	1.7
Extrapolation and Integration	3.7	rectangular	•3	1	1	2.1	2.1
Test Sample Positioning	4.0	normal	1	1	1	4.0	4.0
Device Holder Uncertainty	2.0	normal	1	1	1	2.0	2.0
Drift of Output Power	4.2	rectangular	•3	1	1	2.4	2.4
Phantom and Setup							
Phantom Uncertainty(shape & thickness tolerance)	3.4	rectangular	•3	1	1	2.0	2.0
Liquid Conductivity(target)	5.0	rectangular	•3	0.7	0.5	2.0	1.4
Liquid Conductivity(meas.)	0.0	normal	1	0.7	0.5	0.0	0.0
Liquid Permittivity(target)	5.0	rectangular	•3	0.6	0.5	1.7	1.4
Liquid Permittivity(meas.)	1.9	normal	1	0.6	0.5	1.1	0.9
Combined Uncertainty		RSS				9.6	9.4
Combined Uncertainty (coverage factor=2)		Normal (k=2)				19.2	18.9

10. System Validation

Tissue Verification

Table 10.1 Measured Tissue Parameters

Date(s)		March 8, 2006		March 9, 2006		March 10, 2006	
		2450 MHz Body		2450 MHz Body		5250 MHz Head	
Liquid Temperature (°C)	20.0	Target	Measured	Target	Measured	Target	Measured
Dielectric Constant: ϵ		52.70	51.39	52.70	51.72	48.96	48.11
Conductivity: σ		1.95	1.90	1.95	1.95	5.35	5.36

Date(s)		March 11, 2006		May 4, 2006	
		5765 MHz Body		5765 MHz Body	
Liquid Temperature (°C)	20.0	Target	Measured	Target	Measured
Dielectric Constant: ϵ		48.25	48.23	48.25	47.23
Conductivity: σ		5.96	5.91	5.96	5.92

See Appendix A for data printout.

Test System Verification

Prior to assessment, the system is verified to the $\pm 10\%$ of the specifications at 2450 MHz, 5250 MHz, and 5800 MHz by using the system kit. Power is extrapolated to 1 watt. (Graphic Plots Attached)

Table 10.2 System Dipole Validation Target & Measured

System Validation Kit: ALS-D-2450-S-2 S/N: RFE-278	March 8, 2006	2450 MHz Body	Targeted SAR _{1g} (W/kg) 52.4	Measure SAR _{1g} (W/kg) 55.74	Deviation (%) + 6.37
System Validation Kit: ALS-D-2450-S-2 S/N: RFE-278	March 9, 2006	2450 MHz Body	Targeted SAR _{1g} (W/kg) 52.4	Measure SAR _{1g} (W/kg) 52.04	Deviation (%) -0.69
System Validation Kit: ALS-D-BB-S-2 S/N: 235-00801	March 10, 2006	5250 MHz Body	Targeted SAR _{1g} (W/kg) 62.9	Measure SAR _{1g} (W/kg) 58.46	Deviation (%) -7.06
System Validation Kit: ALS-D-BB-S-2 S/N: 235-00801	March 11, 2006	5800 MHz Body	Targeted SAR _{1g} (W/kg) 58.3	Measure SAR _{1g} (W/kg) 57.98	Deviation (%) -0.55
System Validation Kit: ALS-D-BB-S-2 S/N: 235-00801	May 4, 2006	5800 MHz Body	Targeted SAR _{1g} (W/kg) 58.3	Measure SAR _{1g} (W/kg) 62.18	Deviation (%) +6.66

See Appendix A for data plots.

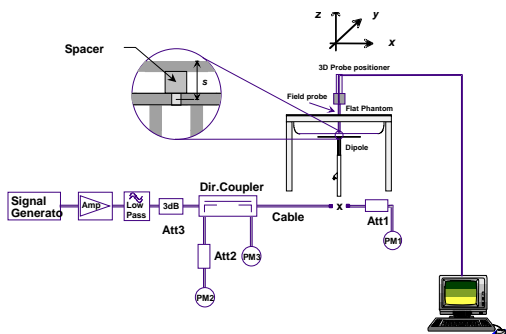


Figure 10.1 Dipole Validation Test Setup

11. SAR Test Data Summary

See Measurement Result Data Pages

See Appendix B for SAR Test Data Plots.
See Appendix C for SAR Test Setup Photos.

Procedures Used To Establish Test Signal

The device was placed into simulated transmit mode using the manufacturer's test codes. Such test signals offer a consistent means for testing SAR and are recommended for evaluating SAR. When test modes are not available or inappropriate for testing a device, the actual transmission is activated through a base station simulator or similar equipment. See data pages for actual procedure used in measurement.

Device Test Condition

The device is battery operated. Each SAR measurement was taken with a fully charged battery. The unit was required to be disassembled to measure the conducted power. To insure that the integrity of the device was not compromised, the power measurements were conducted at the completion of all testing.

SAR Data Summary – 2450 MHz Body – 11b

MEASUREMENT RESULTS								
Position	Antenna	EUT Position	Frequency		Modulation	End of Test Power		SAR (W/kg)
			MHz	Ch.		(dBm)	Battery	
Touch	Main	Side	2412	1	DSSS/OFDM	16.92	Standard	0.939
			2437	6	DSSS/OFDM	17.19	Standard	1.227
			2462	11	DSSS/OFDM	17.32	Standard	1.062
	Aux	Side	2412	1	DSSS/OFDM	16.85	Standard	1.02
			2437	6	DSSS/OFDM	17.12	Standard	1.22
			2462	11	DSSS/OFDM	17.06	Standard	1.128
	Main	Bottom	2437	6	DSSS/OFDM	17.19	Standard	0.544
	Aux	Bottom	2437	6	DSSS/OFDM	17.12	Standard	0.160
	Main	Top	2437	6	DSSS/OFDM	17.19	Standard	0.150
	Aux	Top	2437	6	DSSS/OFDM	17.12	Standard	0.439
	Main w/BT	Side	2437	6	DSSS/OFDM	17.19	Standard	1.143
Aux w/BT	Side	2437	6	DSSS/OFDM	17.12	Standard	1.224	

Body
1.6 W/kg (mW/g)
averaged over 1 gram

1. Battery is fully charged for all tests.
 Power Measured Conducted ERP EIRP
2. SAR Measurement
 Phantom Configuration Left Head Uniphantom Right Head
 SAR Configuration Head Body
3. Test Signal Call Mode Test Code Base Station Simulator
4. Test Configuration With Belt Clip Without Belt Clip N/A




 Jay M. Moulton
 Vice President

SAR Data Summary – 2450 MHz Body – 11g

MEASUREMENT RESULTS								
Position	Antenna	EUT Position	Frequency		Modulation	End of Test Power		SAR (W/kg)
			MHz	Ch.		(dBm)	Battery	
Touch	Main	Side	2412	1	DSSS/OFD	15.52	Standard	0.886
			2437	6	DSSS/OFD	15.17	Standard	0.759
			2462	11	DSSS/OFD	15.03	Standard	0.726
	Aux	Side	2412	1	DSSS/OFD	15.62	Standard	0.652
			2437	6	DSSS/OFD	15.19	Standard	0.785
			2462	11	DSSS/OFD	15.71	Standard	0.799
	Main	Bottom	2412	1	DSSS/OFD	15.52	Standard	0.332
	Aux	Bottom	2462	11	DSSS/OFD	15.71	Standard	0.103
	Main	Top	2412	1	DSSS/OFD	15.52	Standard	0.098
	Aux	Top	2462	11	DSSS/OFD	15.71	Standard	0.294
	Main w/BT	Side	2412	1	DSSS/OFD	15.52	Standard	1.072
	Aux w/BT	Side	2462	11	DSSS/OFD	15.71	Standard	0.714

Body
1.6 W/kg (mW/g)
averaged over 1 gram

1. Battery is fully charged for all tests.
 Power Measured Conducted ERP EIRP
2. SAR Measurement
 Phantom Configuration Left Head Uniphantom Right Head
 SAR Configuration Head Body
3. Test Signal Call Mode Test Code Base Station Simulator
4. Test Configuration With Belt Clip Without Belt Clip N/A




Jay M. Moulton
 Vice President

SAR Data Summary – 5210 MHz Body – 11a

MEASUREMENT RESULTS								
Position	Antenna	EUT Position	Frequency		Modulation	End of Test Power		SAR (W/kg)
			MHz	Ch.		(dBm)	Battery	
Touch	Main	Side	5180	36	OFDM	12.51	Standard	1.083
			5210	42	OFDM	12.30	Standard	1.114
			5240	48	OFDM	12.06	Standard	1.206
	Aux	Side	5180	36	OFDM	13.39	Standard	0.855
			5210	42	OFDM	13.59	Standard	0.787
			5240	48	OFDM	13.55	Standard	0.627
	Main	Bottom	5240	48	OFDM	12.06	Standard	0.557
	Aux	Bottom	5180	36	OFDM	13.39	Standard	0.599
	Main	Top	5240	48	OFDM	12.06	Standard	0.415
	Aux	Top	5180	36	OFDM	13.39	Standard	0.871
Main w/BT	Side	5240	48	OFDM	12.06	Standard	1.514	
Aux w/BT	Side	5180	36	OFDM	13.39	Standard	1.052	

Body
1.6 W/kg (mW/g)
averaged over 1 gram

1. Battery is fully charged for all tests.
 Power Measured Conducted ERP EIRP
2. SAR Measurement
 Phantom Configuration Left Head Uniphantom Right Head
 SAR Configuration Head Body
3. Test Signal Call Mode Test Code Base Station Simulator
4. Test Configuration With Belt Clip Without Belt Clip N/A



 Jay M. Moulton
 Vice President

SAR Data Summary – 5290 MHz Body – 11a

MEASUREMENT RESULTS								
Position	Antenna	EUT Position	Frequency		Modulation	End of Test Power		SAR (W/kg)
			MHz	Ch.		(dBm)	Battery	
Touch	Main	Side	5260	52	OFDM	12.34	Standard	1.337
			5290	58	OFDM	12.52	Standard	1.396
			5320	64	OFDM	11.93	Standard	1.424
	Aux	Side	5260	52	OFDM	12.95	Standard	0.967
			5290	58	OFDM	12.75	Standard	1.060
			5320	64	OFDM	12.90	Standard	1.180
	Main	Bottom	5320	64	OFDM	11.93	Standard	0.631
	Aux	Bottom	5320	64	OFDM	12.90	Standard	0.372
	Main	Top	5320	64	OFDM	11.93	Standard	0.439
	Aux	Top	5320	64	OFDM	12.90	Standard	0.602
Main w/BT	Side	5320	64	OFDM	11.93	Standard	1.476	
Aux w/BT	Side	5320	64	OFDM	12.90	Standard	1.166	

Body
1.6 W/kg (mW/g)
averaged over 1 gram

1. Battery is fully charged for all tests.
 Power Measured Conducted ERP EIRP
2. SAR Measurement
 Phantom Configuration Left Head Uniphantom Right Head
 SAR Configuration Head Body
3. Test Signal Call Mode Test Code Base Station Simulator
4. Test Configuration With Belt Clip Without Belt Clip N/A



Jay M. Moulton
 Vice President

SAR Data Summary – 5800 MHz Body – 11a

MEASUREMENT RESULTS								
Position	Antenna	EUT Position	Frequency		Modulation	End of Test Power		SAR (W/kg)
			MHz	Ch.		(dBm)	Battery	
Touch	Main	Side	5745	149	OFDM	13.51	Standard	1.405
			5765	153	OFDM	13.24	Standard	1.218
			5805	161	OFDM	12.95	Standard	1.244
			5825	165	OFDM	12.97	Standard	1.339
	Aux	Side	5745	149	OFDM	13.97	Standard	1.594
			5765	153	OFDM	13.71	Standard	1.497
			5805	161	OFDM	13.50	Standard	1.514
			5825	165	OFDM	12.97	Standard	1.563
	Main	Bottom	5745	149	OFDM	13.51	Standard	0.413
	Aux	Bottom	5745	149	OFDM	13.97	Standard	0.318
	Main	Top	5745	149	OFDM	13.51	Standard	0.336
	Aux	Top	5745	149	OFDM	13.97	Standard	0.252
	Main w/BT	Side	5745	149	OFDM	13.51	Standard	1.344
	Aux w/BT	Side	5745	149	OFDM	13.97	Standard	1.555

Body
1.6 W/kg (mW/g)
averaged over 1 gram

1. Battery is fully charged for all tests.
 Power Measured Conducted ERP EIRP
2. SAR Measurement
 Phantom Configuration Left Head Uniphantom Right Head
 SAR Configuration Head Body
3. Test Signal Call Mode Test Code Base Station Simulator
4. Test Configuration With Belt Clip Without Belt Clip N/A



Jay M. Moulton
 Vice President

12. Test Equipment List

Table 12.1 Equipment Specifications

Type	Calibration Due Date	Serial Number
ThermoCRS Robot	N/A	RAF0338198
ThermoCRS Controller	N/A	RCF0338224
ThermoCRS Teach Pendant (Joystick)	N/A	STP0334405
IBM Computer, 2.66 MHz P4	N/A	8189D8U KCPR08N
Apriel E-Field Probe ALS-E020	06/10/2006	RFE-215
Apriel Dummy Probe	N/A	023
Apriel Left Phantom	N/A	RFE-267
Apriel Right Phantom	N/A	RFE-268
Apriel UniPhantom	N/A	RFE-273
Apriel Validation Dipole ALS-D-450-S-2	01/12/2007	RFE-362
Apriel Validation Dipole ALS-D-835-S-2	02/16/2008	RFE-274
Apriel Validation Dipole ALS-D-1900-S-2	02/15/2008	RFE-277
Apriel Validation Dipole ALS-D-2450-S-2	02/17/2008	RFE-278
Apriel Validation Dipole ALS-D-BB-S-2	05/24/2007	5258-235-00801
Agilent (HP) 437B Power Meter	12/12/2006	3125U08837
Agilent (HP) 8481B Power Sensor	12/19/2006	3318A05384
Advantest R3261A Spectrum Analyzer	12/13/2006	31720068
Agilent (HP) 8350B Signal Generator	02/23/2007	2749A10226
Agilent (HP) 83525A RF Plug-In	02/23/2007	2647A01172
Agilent (HP) 8753C Vector Network Analyzer	02/02/2007	3135A01724
Agilent (HP) 85047A S-Parameter Test Set	02/02/2007	2904A00595
Apriel Dielectric Probe Assembly	N/A	0011
Microwave Power Devices 510-10E Amplifier	02/23/2007	6063-001
Microwave Power Devices 1020-9E Amplifier	02/23/2007	5618-1
Brain Equivalent Matter (450 MHz)	N/A	N/A
Brain Equivalent Matter (835 MHz)	N/A	N/A
Brain Equivalent Matter (1900 MHz)	N/A	N/A
Brain Equivalent Matter (2450 MHz)	N/A	N/A
Muscle Equivalent Matter (450 MHz)	N/A	N/A
Muscle Equivalent Matter (835 MHz)	N/A	N/A
Muscle Equivalent Matter (1900 MHz)	N/A	N/A
Muscle Equivalent Matter (2450 MHz)	N/A	N/A
Muscle Equivalent Matter (5200 MHz)	N/A	N/A
Muscle Equivalent Matter (5800 MHz)	N/A	N/A

13. Conclusion

The SAR measurement indicates that the EUT complies with the RF radiation exposure limits of the FCC. These measurements are taken to simulate the RF effects exposure under worst-case conditions. Precise laboratory measures were taken to assure repeatability of the tests. The tested device complies with the requirements in respect to all parameters subject to the test. The test results and statements relate only to the item(s) tested.

Please note that the absorption and distribution of electromagnetic energy in the body is a very complex phenomena that depends on the mass, shape, and size of the body; the orientation of the body with respect to the field vectors; and, the electrical properties of both the body and the environment. Other variables that may play a substantial role in possible biological effects are those that characterize the environment (e.g. ambient temperature, air velocity, relative humidity, and body insulation) and those that characterize the individual (e.g. age, gender, activity level, debilitation, or disease). Because innumerable factors may interact to determine the specific biological outcome of an exposure to electromagnetic fields, any protection guide shall consider maximal amplification of biological effects as a result of field-body interactions, environmental conditions, and physiological variables. [3]

14. References

- [1] Federal Communications Commission, ET Docket 93-62, Guidelines for Evaluating the Environmental Effects of Radio Frequency Radiation, August 1996
- [2] ANSI/IEEE C95.1 – 1999, American National Standard Safety Levels with respect to Human Exposure to Radio Frequency Electromagnetic Fields, 300kHz to 100GHz, New York: IEEE, 1992.
- [3] ANSI/IEEE C95.3 – 2002, IEEE Recommended Practice for the Measurement of Potentially Hazardous Electromagnetic Fields – RF and Microwave, New York: IEEE, 1992.
- [4] Federal Communications Commission, OET Bulletin 65 (Edition 97-01), Supplement C (Edition 01-01), Evaluating Compliance with FCC Guidelines for Human Exposure to Radio Frequency Electromagnetic Fields, July 2001.
- [5] IEEE Standard 1528 – 2003, IEEE Recommended Practice for Determining the Peak-Spatial Average Specific Absorption Rate (SAR) in the Human Head from Wireless Communication Devices: Measurement Techniques, October 2003.
- [6] Industry Canada, RSS – 102e, Radio Frequency Exposure Compliance of Radiocommunication Apparatus (All Frequency Bands), November 2005.
- [7] Industry Canada, Safety Code 6, Limits of Human Exposure to Radiofrequency Electromagnetic Fields in the Frequency Range from 3kHz to 300 GHz, 1999.

Appendix A – System Validation Plots and Data

```
*****
Test Result for UIM Dielectric Parameter
Wed 08/Mar/2006 09:03:53
Freq Frequency(GHz)
FCC_eH      FCC Bulletin 65 Supplement C ( June 2001) Limits for Head Epsilon
FCC_sH      FCC Bulletin 65 Supplement C (June 2001) Limits for Head Sigma
FCC_eB      FCC Limits for Body Epsilon
FCC_sB      FCC Limits for Body Sigma
Test_e      Epsilon of UIM
Test_s      Sigma of UIM
*****
Freq      FCC_eB      FCC_sB      Test_e      Test_s
2.4200    52.74      1.92      51.59      1.84
2.4300    52.73      1.93      51.43      1.86
2.4400    52.71      1.94      51.50      1.89
2.4500    52.70      1.95      51.39      1.90
2.4600    52.69      1.96      51.34      1.91
2.4700    52.67      1.98      51.28      1.91
2.4800    52.66      1.99      50.88      1.92
```

```
*****
Test Result for UIM Dielectric Parameter
Thu 09/Mar/2006 08:27:37
Freq Frequency(GHz)
FCC_eH      FCC Bulletin 65 Supplement C ( June 2001) Limits for Head Epsilon
FCC_sH      FCC Bulletin 65 Supplement C (June 2001) Limits for Head Sigma
FCC_eB      FCC Limits for Body Epsilon
FCC_sB      FCC Limits for Body Sigma
Test_e      Epsilon of UIM
Test_s      Sigma of UIM
*****
Freq      FCC_eB      FCC_sB      Test_e      Test_s
2.4200    52.74      1.92      51.99      1.93
2.4300    52.73      1.93      51.93      1.94
2.4400    52.71      1.94      51.87      1.94
2.4500    52.70      1.95      51.72      1.95
2.4600    52.69      1.96      51.70      1.95
2.4700    52.67      1.98      51.65      1.95
2.4800    52.66      1.99      51.38      1.98
```

Test Result for UIM Dielectric Parameter

Fri 10/Mar/2006 07:22:12

Freq Frequency(GHz)

FCC_eH FCC Bulletin 65 Supplement C (June 2001) Limits for Head Epsilon

FCC_sH FCC Bulletin 65 Supplement C (June 2001) Limits for Head Sigma

FCC_eB FCC Limits for Body Epsilon

FCC_sB FCC Limits for Body Sigma

Test_e Epsilon of UIM

Test_s Sigma of UIM

Freq	FCC_eB	FCC_sB	Test_e	Test_s
5.2200	48.99	5.32	47.37	5.20
5.2300	48.97	5.33	47.45	5.26
5.2400	48.96	5.35	47.60	5.34
5.2500	48.95	5.36	48.11	5.36
5.2600	48.93	5.37	48.41	5.39
5.2700	48.92	5.38	48.62	5.41
5.2800	48.91	5.39	48.57	5.43

Test Result for UIM Dielectric Parameter

Sat 11/Mar/2006 08:06:50

Freq Frequency(GHz)

FCC_eH FCC Bulletin 65 Supplement C (June 2001) Limits for Head Epsilon

FCC_sH FCC Bulletin 65 Supplement C (June 2001) Limits for Head Sigma

FCC_eB FCC Limits for Body Epsilon

FCC_sB FCC Limits for Body Sigma

Test_e Epsilon of UIM

Test_s Sigma of UIM

Freq	FCC_eB	FCC_sB	Test_e	Test_s
5.7350	48.29	5.92	48.69	5.87
5.7450	48.27	5.94	48.47	5.89
5.7550	48.26	5.95	48.37	5.90
5.7650	48.25	5.96	48.23	5.91
5.7750	48.23	5.97	48.21	5.93
5.7850	48.22	5.98	48.21	5.94
5.7950	48.21	5.99	48.19	5.95

Test Result for UIM Dielectric Parameter

Thu 04/May/2006 14:52:43

Freq Frequency(GHz)

FCC_eH FCC Bulletin 65 Supplement C (June 2001) Limits for Head Epsilon

FCC_sH FCC Bulletin 65 Supplement C (June 2001) Limits for Head Sigma

FCC_eB FCC Limits for Body Epsilon

FCC_sB FCC Limits for Body Sigma

Test_e Epsilon of UIM

Test_s Sigma of UIM

Freq	FCC_eB	FCC_sB	Test_e	Test_s
5.7600	48.25	5.95	47.29	5.86
5.7700	48.24	5.96	47.28	5.87
5.7800	48.23	5.98	47.27	5.89
5.7900	48.21	5.99	47.25	5.90
5.8000	48.20	6.00	47.23	5.92
5.8100	48.19	6.01	47.20	5.94
5.8200	48.17	6.02	47.19	5.95
5.8300	48.16	6.04	47.17	5.96
5.8400	48.15	6.05	47.15	5.98

SAR Test Report

By Operator : Jay
Measurement Date : 08-Mar-2006
Starting Time : 08-Mar-2006 09:24:28 AM
End Time : 08-Mar-2006 09:37:39 AM
Scanning Time : 791 secs

Product Data

Device Name : Validation
Serial No. : 2450
Type : Dipole
Model : ALS-D-2450-S-2
Frequency : 2450.00 MHz
Max. Transmit Pwr : 0.1 W
Drift Time : 0 min(s)
Length : 51.5 mm
Width : 3.6 mm
Depth : 30.4 mm
Antenna Type : Internal
Orientation : Touch
Power Drift-Start : 2.411 W/kg
Power Drift-Finish: 2.511 W/kg
Power Drift (%) : 4.148

Phantom Data

Name : APREL-Uni
Type : Uni-Phantom
Size (mm) : 280 x 280 x 200
Serial No. : System Default
Location : Center
Description : Uni-Phantom

Tissue Data

Type : BODY
Serial No. : 2450
Frequency : 2450.00 MHz
Last Calib. Date : 08-Mar-2006
Temperature : 20.00 °C
Ambient Temp. : 22.00 °C
Humidity : 44.00 RH%
Epsilon : 51.39 F/m
Sigma : 1.90 S/m
Density : 1000.00 kg/cu. m

Probe Data

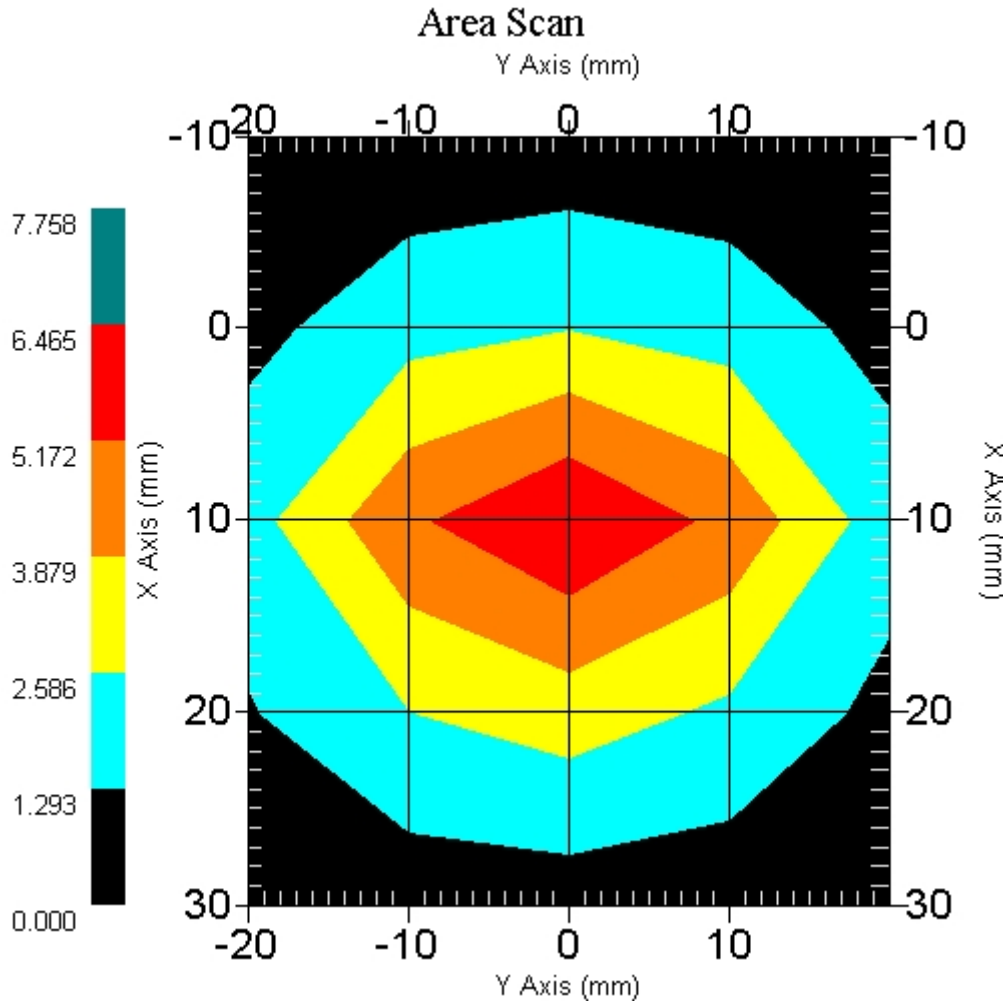
Name : Probe 215 - RFEL
Model : E020
Type : E-Field Triangle
Serial No. : 215
Last Calib. Date : 10-Jun-2005
Frequency : 2450.00 MHz
Duty Cycle Factor: 1
Conversion Factor: 4.6
Probe Sensitivity: 1.20 1.20 1.20 $\mu\text{V}/(\text{V}/\text{m})^2$
Compression Point: 95.00 mV
Offset : 1.56 mm

Measurement Data

Crest Factor : 1
 Scan Type : Complete
 Tissue Temp. : 20.00 °C
 Ambient Temp. : 22.00 °C
 Set-up Date : 08-Mar-2006
 Set-up Time : 8:45:11 AM
 Area Scan : 5x5x1 : Measurement x=10mm, y=10mm, z=4mm
 Zoom Scan : 5x5x8 : Measurement x=8mm, y=8mm, z=4mm

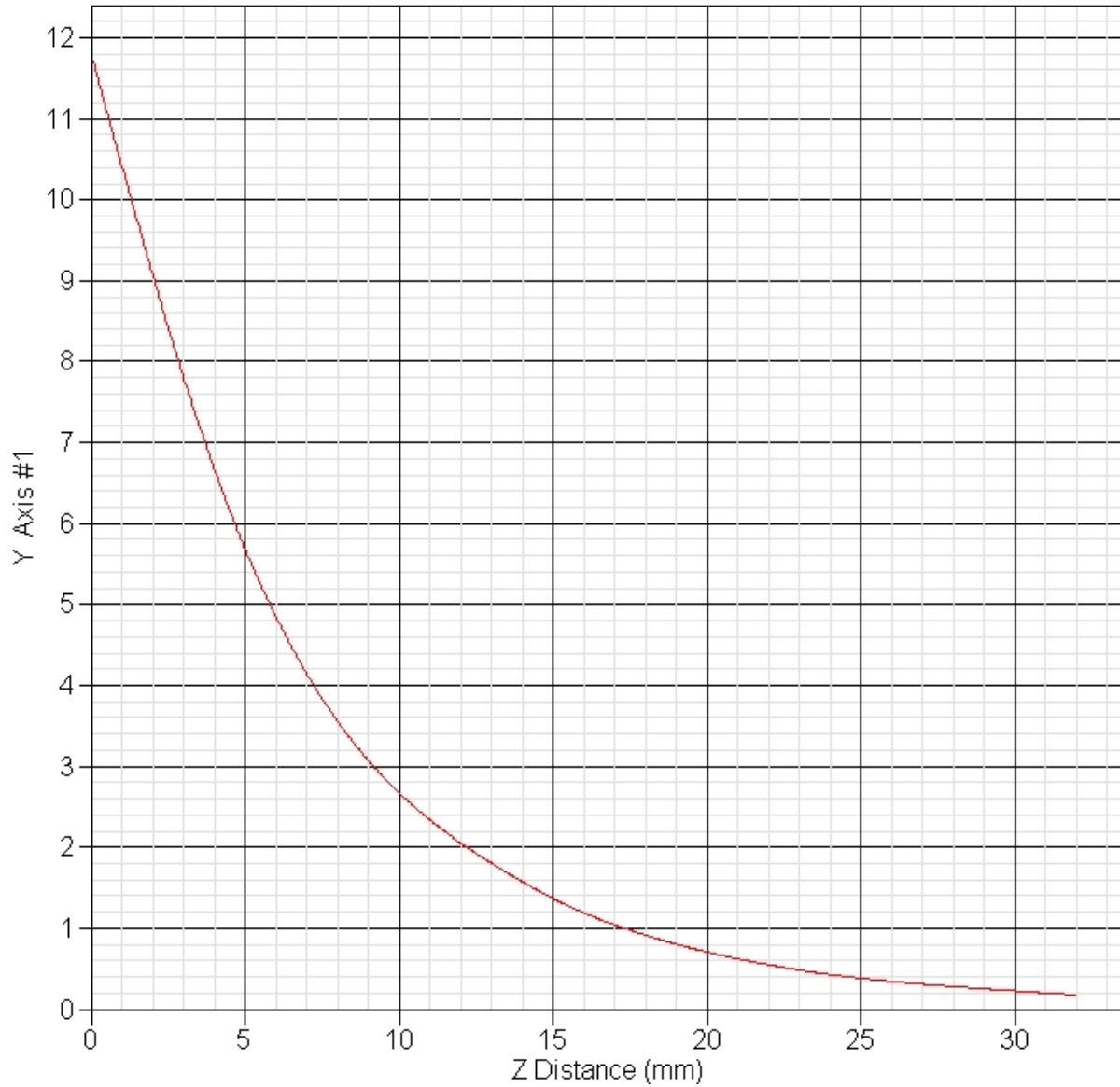
Other Data

DUT Position : Touch
 Separation : 10 mm
 Channel : Mid - 2450



1 gram SAR value : 5.574 W/kg
 10 gram SAR value : 2.472 W/kg
 Area Scan Peak SAR : 6.465 W/kg
 Zoom Scan Peak SAR : 11.810 W/kg

SAR-Z Axis
at Hotspot x:10.40 y:-2.30



SAR Test Report

By Operator : Jay
Measurement Date : 09-Mar-2006
Starting Time : 09-Mar-2006 08:39:35 AM
End Time : 09-Mar-2006 08:52:49 AM
Scanning Time : 794 secs

Product Data

Device Name : Validation
Serial No. : 2450
Type : Dipole
Model : ALS-D-2450-S-2
Frequency : 2450.00 MHz
Max. Transmit Pwr : 0.1 W
Drift Time : 0 min(s)
Length : 51.5 mm
Width : 3.6 mm
Depth : 30.4 mm
Antenna Type : Internal
Orientation : Touch
Power Drift-Start : 2.574 W/kg
Power Drift-Finish: 2.465 W/kg
Power Drift (%) : -4.239

Phantom Data

Name : APREL-Uni
Type : Uni-Phantom
Size (mm) : 280 x 280 x 200
Serial No. : System Default
Location : Center
Description : Uni-Phantom

Tissue Data

Type : BODY
Serial No. : 2450
Frequency : 2450.00 MHz
Last Calib. Date : 09-Mar-2006
Temperature : 20.00 °C
Ambient Temp. : 22.00 °C
Humidity : 44.00 RH%
Epsilon : 51.72 F/m
Sigma : 1.95 S/m
Density : 1000.00 kg/cu. m

Probe Data

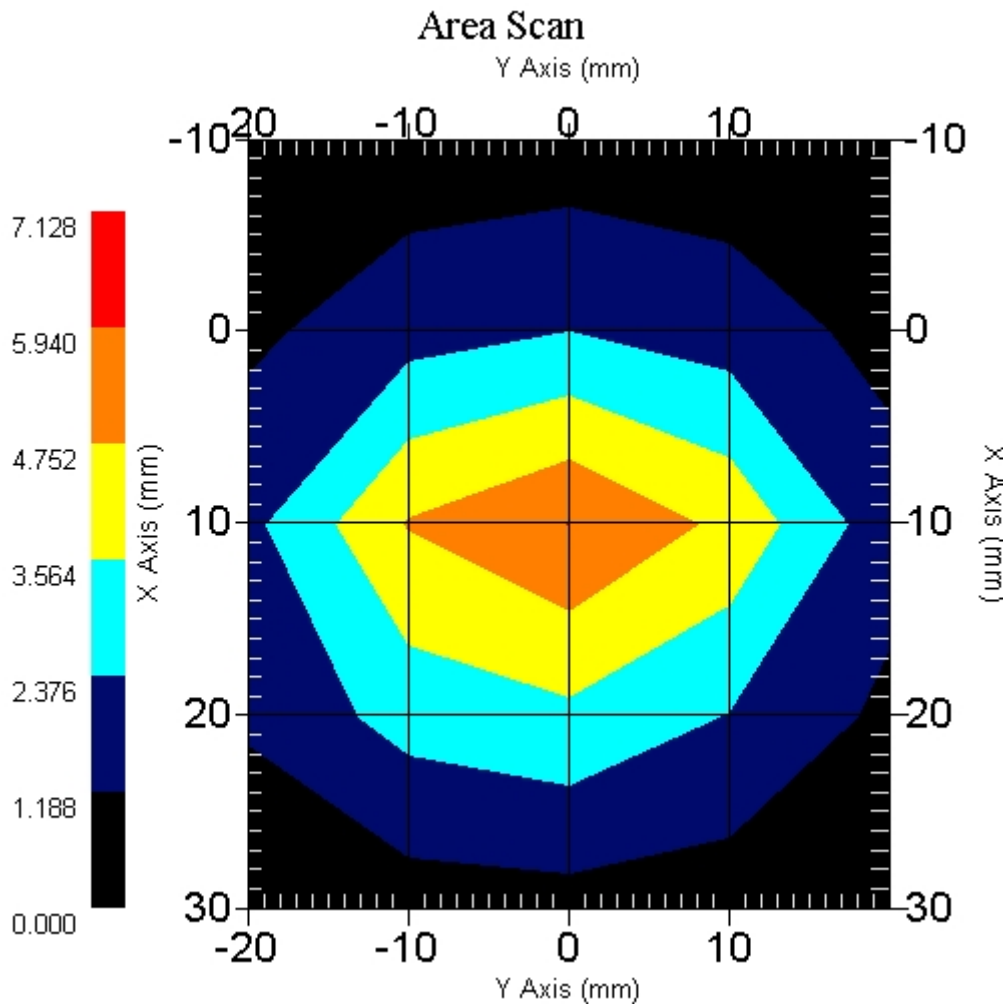
Name : Probe 215 - RFEL
Model : E020
Type : E-Field Triangle
Serial No. : 215
Last Calib. Date : 10-Jun-2005
Frequency : 2450.00 MHz
Duty Cycle Factor: 1
Conversion Factor: 4.6
Probe Sensitivity: 1.20 1.20 1.20 $\mu\text{V}/(\text{V}/\text{m})^2$
Compression Point: 95.00 mV
Offset : 1.56 mm

Measurement Data

Crest Factor : 1
 Scan Type : Complete
 Tissue Temp. : 20.00 °C
 Ambient Temp. : 22.00 °C
 Set-up Date : 09-Mar-2006
 Set-up Time : 8:45:11 AM
 Area Scan : 5x5x1 : Measurement x=10mm, y=10mm, z=4mm
 Zoom Scan : 5x5x8 : Measurement x=8mm, y=8mm, z=4mm

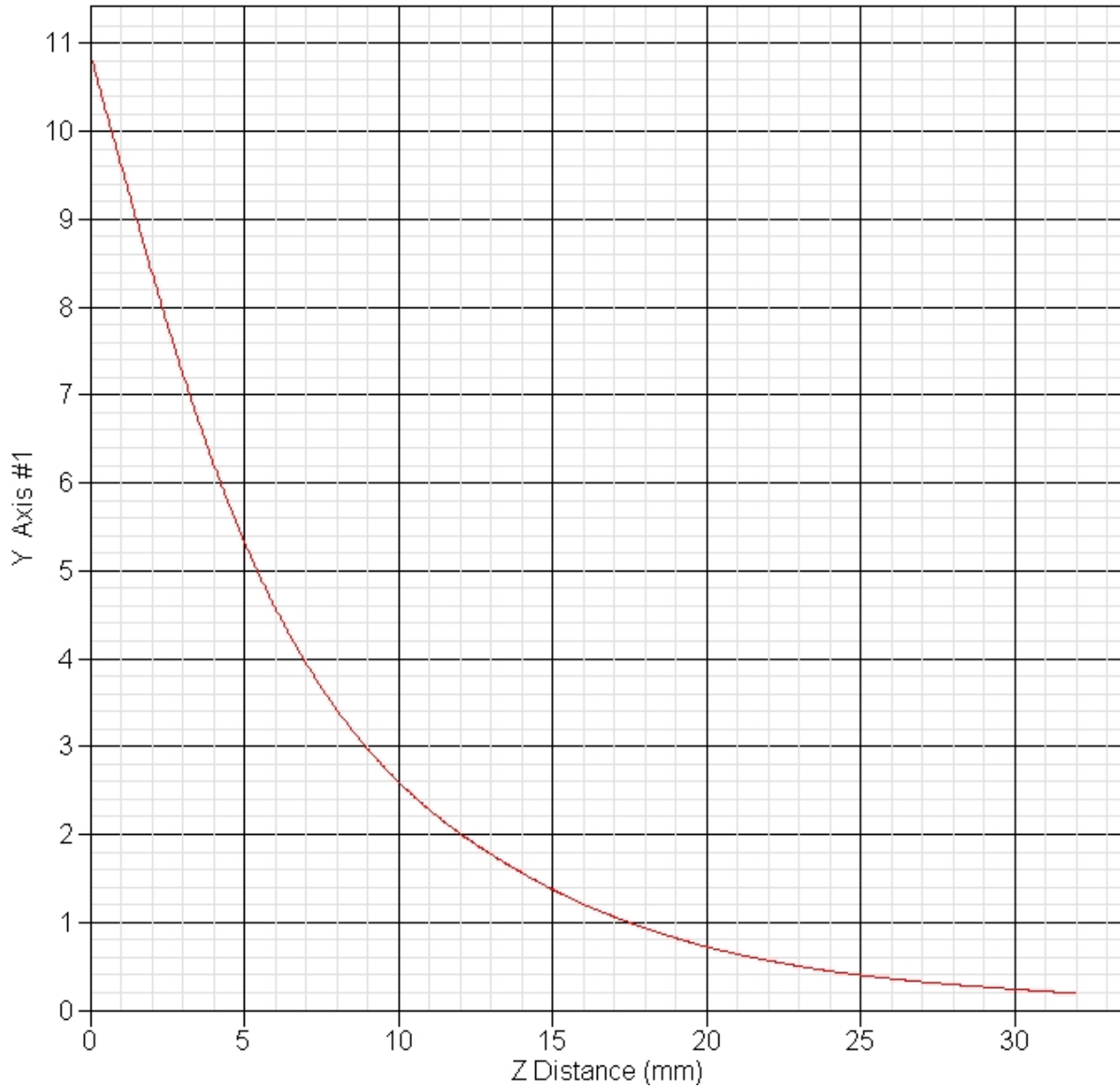
Other Data

DUT Position : Touch
 Separation : 10 mm
 Channel : Mid - 2450



1 gram SAR value : 5.204 W/kg
 10 gram SAR value : 2.356 W/kg
 Area Scan Peak SAR : 5.941 W/kg
 Zoom Scan Peak SAR : 10.890 W/kg

SAR-Z Axis
at Hotspot x:10.40 y:-2.30



SAR Test Report

By Operator : Jay
Measurement Date : 10-Mar-2006
Starting Time : 10-Mar-2006 07:32:59 AM
End Time : 10-Mar-2006 07:44:20 AM
Scanning Time : 681 secs

Product Data

Device Name : Validation
Serial No. : 5200
Type : Dipole
Model : ALS-D-BB-S-2
Frequency : 5200.00 MHz
Max. Transmit Pwr : 0.1 W
Drift Time : 0 min(s)
Length : 23.1 mm
Width : 3.6 mm
Depth : 20.7 mm
Antenna Type : Internal
Orientation : Touch
Power Drift-Start : 2.190 W/kg
Power Drift-Finish: 2.133 W/kg
Power Drift (%) : -2.603

Phantom Data

Name : APREL-Uni
Type : Uni-Phantom
Size (mm) : 280 x 280 x 200
Serial No. : System Default
Location : Center
Description : Uni-Phantom

Tissue Data

Type : BODY
Serial No. : 5200
Frequency : 5200.00 MHz
Last Calib. Date : 10-Mar-2006
Temperature : 20.00 °C
Ambient Temp. : 22.00 °C
Humidity : 42.00 RH%
Epsilon : 48.11 F/m
Sigma : 5.36 S/m
Density : 1000.00 kg/cu. m

Probe Data

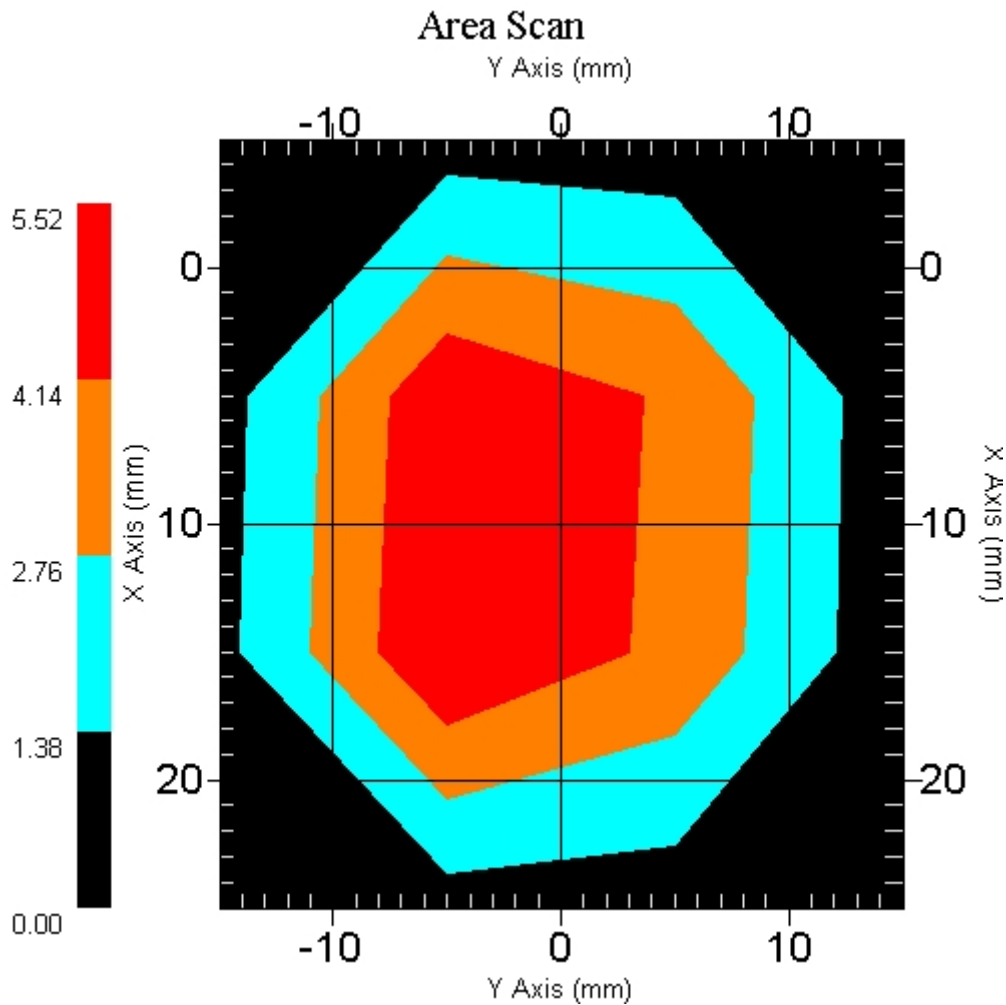
Name : Probe 215 - RFEL
Model : E020
Type : E-Field Triangle
Serial No. : 215
Last Calib. Date : 10-Jun-2005
Frequency : 5200.00 MHz
Duty Cycle Factor: 1
Conversion Factor: 2.8
Probe Sensitivity: 1.20 1.20 1.20 $\mu\text{V}/(\text{V}/\text{m})^2$
Compression Point: 95.00 mV
Offset : 1.56 mm

Measurement Data

Crest Factor : 1
 Scan Type : Complete
 Tissue Temp. : 21.00 °C
 Ambient Temp. : 23.00 °C
 Set-up Date : 10-Mar-2006
 Set-up Time : 4:12:54 PM
 Area Scan : 4x4x1 : Measurement x=10mm, y=10mm, z=4mm
 Zoom Scan : 5x5x8 : Measurement x=8mm, y=8mm, z=4mm

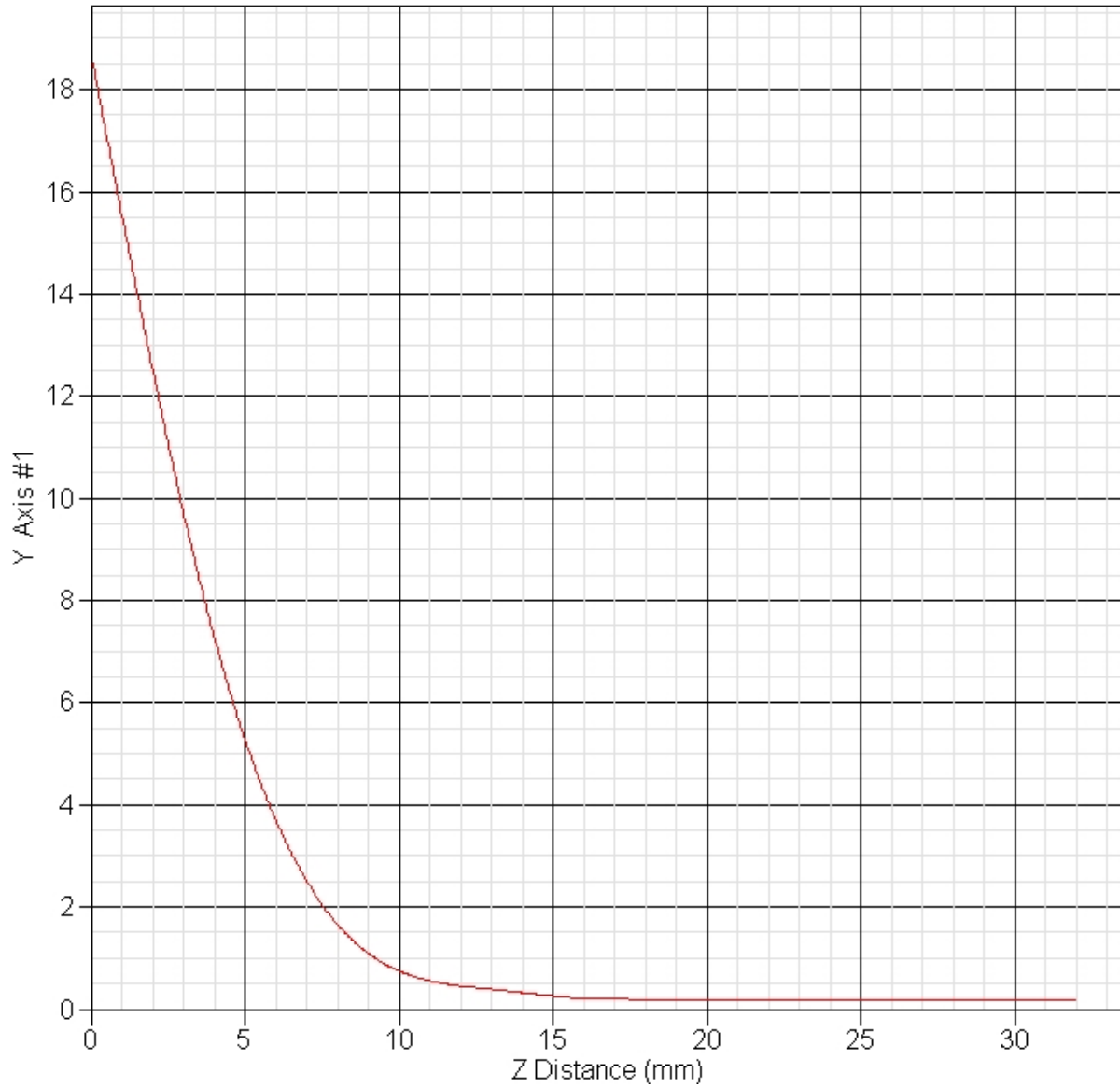
Other Data

DUT Position : Touch
 Separation : 10 mm
 Channel : Mid - 5250



1 gram SAR value : 5.846 W/kg
 10 gram SAR value : 1.828 W/kg
 Area Scan Peak SAR : 5.519 W/kg
 Zoom Scan Peak SAR : 18.715 W/kg

SAR-Z Axis
at Hotspot x:7.40 y:-7.30



SAR Test Report

By Operator : Jay
Measurement Date : 11-Mar-2006
Starting Time : 11-Mar-2006 08:12:32 AM
End Time : 11-Mar-2006 08:25:54 AM
Scanning Time : 802 secs

Product Data

Device Name : Validation
Serial No. : 5800
Type : Dipole
Model : ALS-D-BB-S-2
Frequency : 5800.00 MHz
Max. Transmit Pwr : 0.1 W
Drift Time : 0 min(s)
Length : 23.1 mm
Width : 3.6 mm
Depth : 20.7 mm
Antenna Type : Internal
Orientation : Touch
Power Drift-Start : 2.564 W/kg
Power Drift-Finish: 2.489 W/kg
Power Drift (%) : -2.920

Phantom Data

Name : APREL-Uni
Type : Uni-Phantom
Size (mm) : 280 x 280 x 200
Serial No. : System Default
Location : Center
Description : Uni-Phantom

Tissue Data

Type : BODY
Serial No. : 5800
Frequency : 5765.00 MHz
Last Calib. Date : 11-Mar-2006
Temperature : 20.00 °C
Ambient Temp. : 22.00 °C
Humidity : 43.00 RH%
Epsilon : 48.23 F/m
Sigma : 5.91 S/m
Density : 1000.00 kg/cu. m

Probe Data

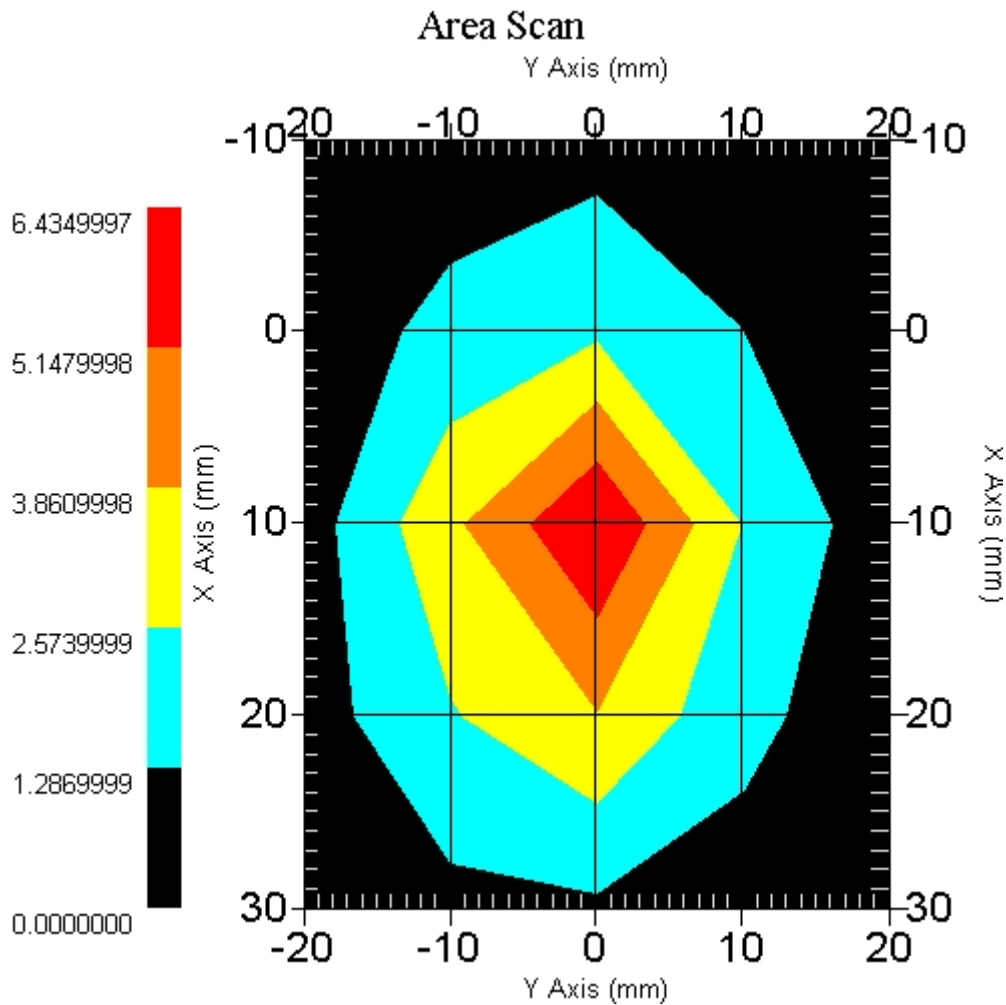
Name : Probe 215 - RFEL
Model : E020
Type : E-Field Triangle
Serial No. : 215
Last Calib. Date : 10-Jun-2005
Frequency : 5800.00 MHz
Duty Cycle Factor: 1
Conversion Factor: 2.1
Probe Sensitivity: 1.20 1.20 1.20 $\mu\text{V}/(\text{V}/\text{m})^2$
Compression Point: 95.00 mV
Offset : 1.56 mm

Measurement Data

Crest Factor : 1
 Scan Type : Complete
 Tissue Temp. : 20.00 °C
 Ambient Temp. : 22.00 °C
 Set-up Date : 11-Mar-2006
 Set-up Time : 11:11:37 AM
 Area Scan : 5x5x1 : Measurement x=10mm, y=10mm, z=4mm
 Zoom Scan : 5x5x8 : Measurement x=8mm, y=8mm, z=4mm

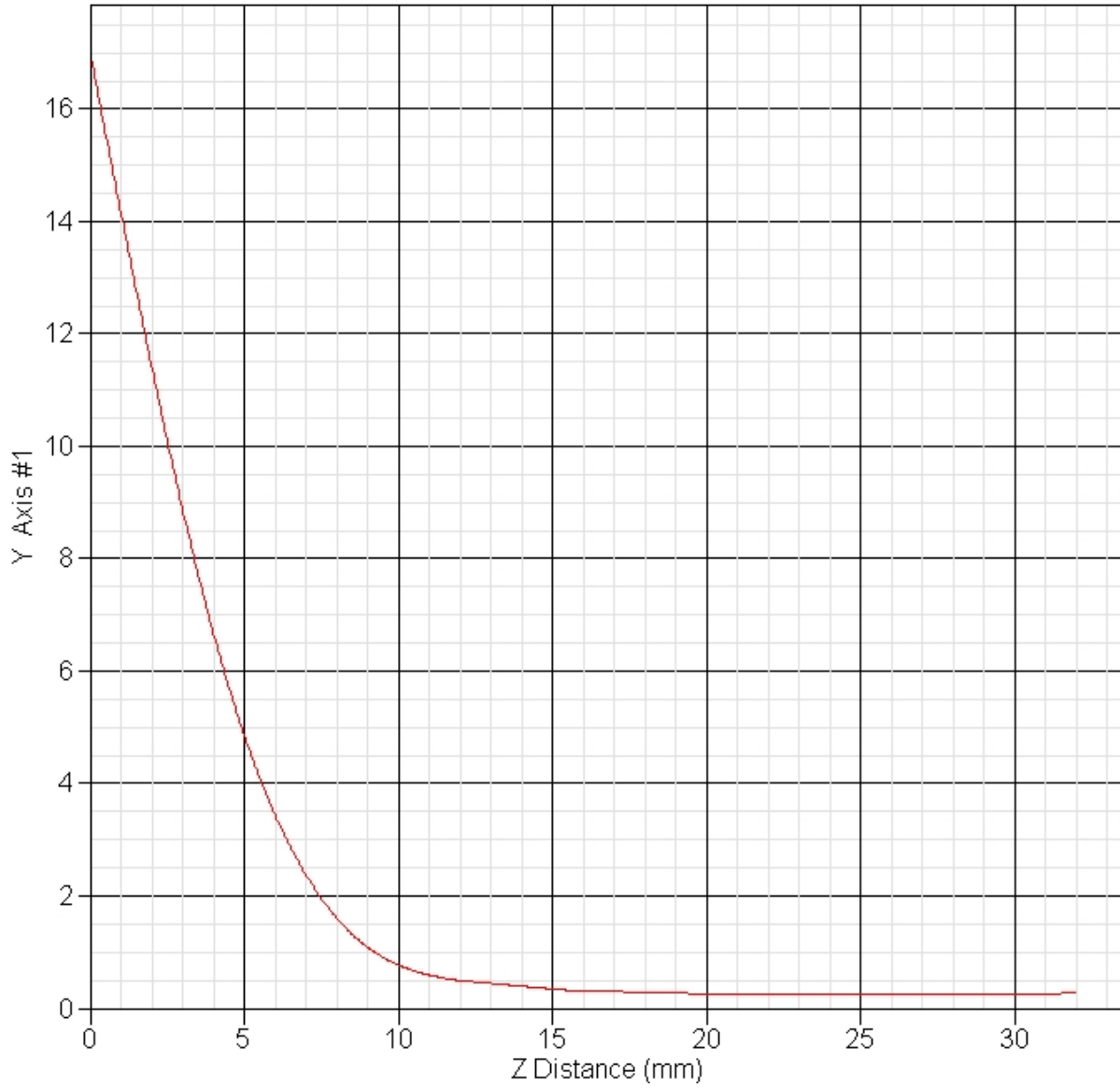
Other Data

DUT Position : Touch
 Separation : 10 mm
 Channel : Mid - 5800



1 gram SAR value : 5.798 W/kg
 10 gram SAR value : 2.101 W/kg
 Area Scan Peak SAR : 6.433 W/kg
 Zoom Scan Peak SAR : 17.013 W/kg

SAR-Z Axis
at Hotspot x:10.30 y:-2.30



SAR Test Report

By Operator : Jay
Measurement Date : 04-May-2006
Starting Time : 04-May-2006 04:36:09 PM
End Time : 04-May-2006 04:49:15 PM
Scanning Time : 786 secs

Product Data

Device Name : Validation
Serial No. : 5800
Type : Dipole
Model : ALS-D-BB-S-2
Frequency : 5800.00 MHz
Max. Transmit Pwr : 0.1 W
Drift Time : 0 min(s)
Length : 23.1 mm
Width : 3.6 mm
Depth : 20.7 mm
Antenna Type : Internal
Orientation : Touch
Power Drift-Start : 1.624 W/kg
Power Drift-Finish: 1.625 W/kg
Power Drift (%) : 0.062

Phantom Data

Name : APREL-Uni
Type : Uni-Phantom
Size (mm) : 280 x 280 x 200
Serial No. : System Default
Location : Center
Description : Uni-Phantom

Tissue Data

Type : BODY
Serial No. : 5800
Frequency : 5765.00 MHz
Last Calib. Date : 04-May-2006
Temperature : 20.00 °C
Ambient Temp. : 21.00 °C
Humidity : 47.00 RH%
Epsilon : 47.23 F/m
Sigma : 5.92 S/m
Density : 1000.00 kg/cu. m

Probe Data

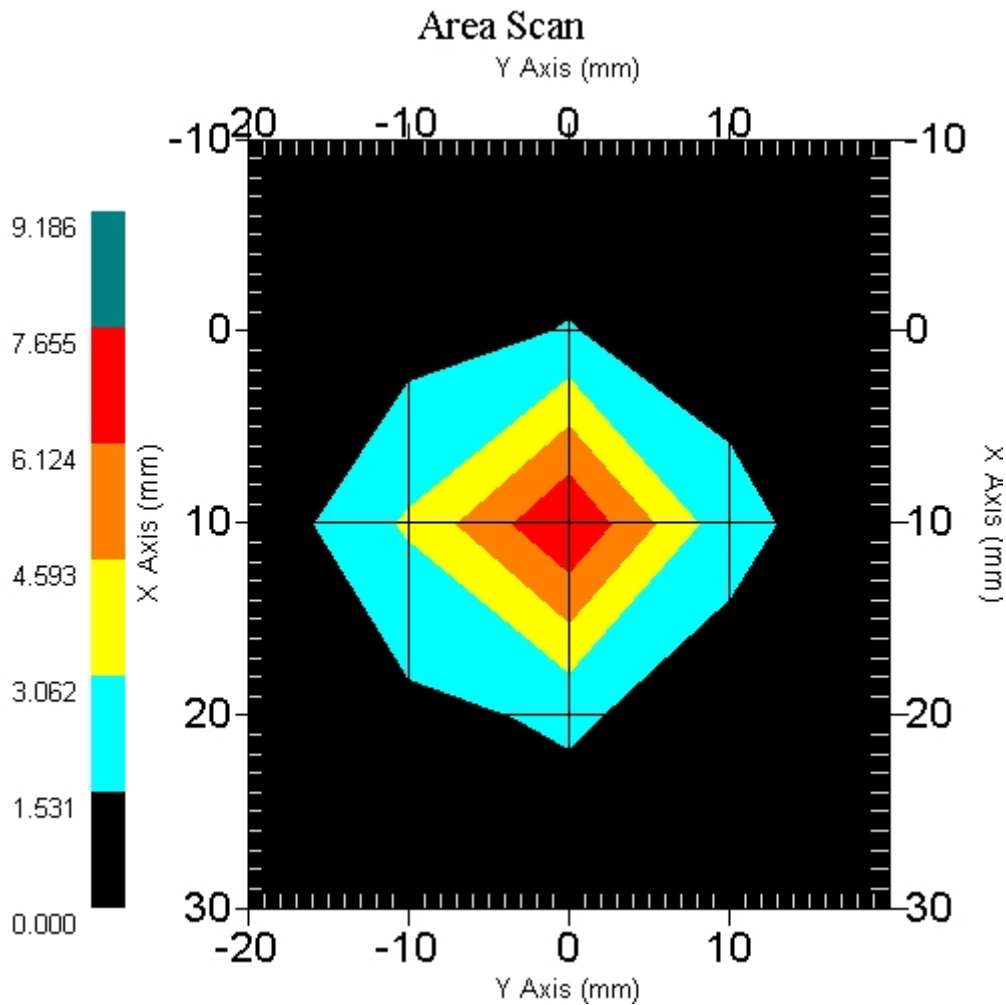
Name : Probe 215 - RFEL
Model : E020
Type : E-Field Triangle
Serial No. : 215
Last Calib. Date : 10-Jun-2005
Frequency : 5800.00 MHz
Duty Cycle Factor: 1
Conversion Factor: 2.1
Probe Sensitivity: 1.20 1.20 1.20 $\mu\text{V}/(\text{V}/\text{m})^2$
Compression Point: 95.00 mV
Offset : 1.56 mm

Measurement Data

Crest Factor : 1
 Scan Type : Complete
 Tissue Temp. : 20.00 °C
 Ambient Temp. : 21.00 °C
 Set-up Date : 04-May-2006
 Set-up Time : 4:10:18 PM
 Area Scan : 5x5x1 : Measurement x=10mm, y=10mm, z=4mm
 Zoom Scan : 5x5x8 : Measurement x=8mm, y=8mm, z=4mm

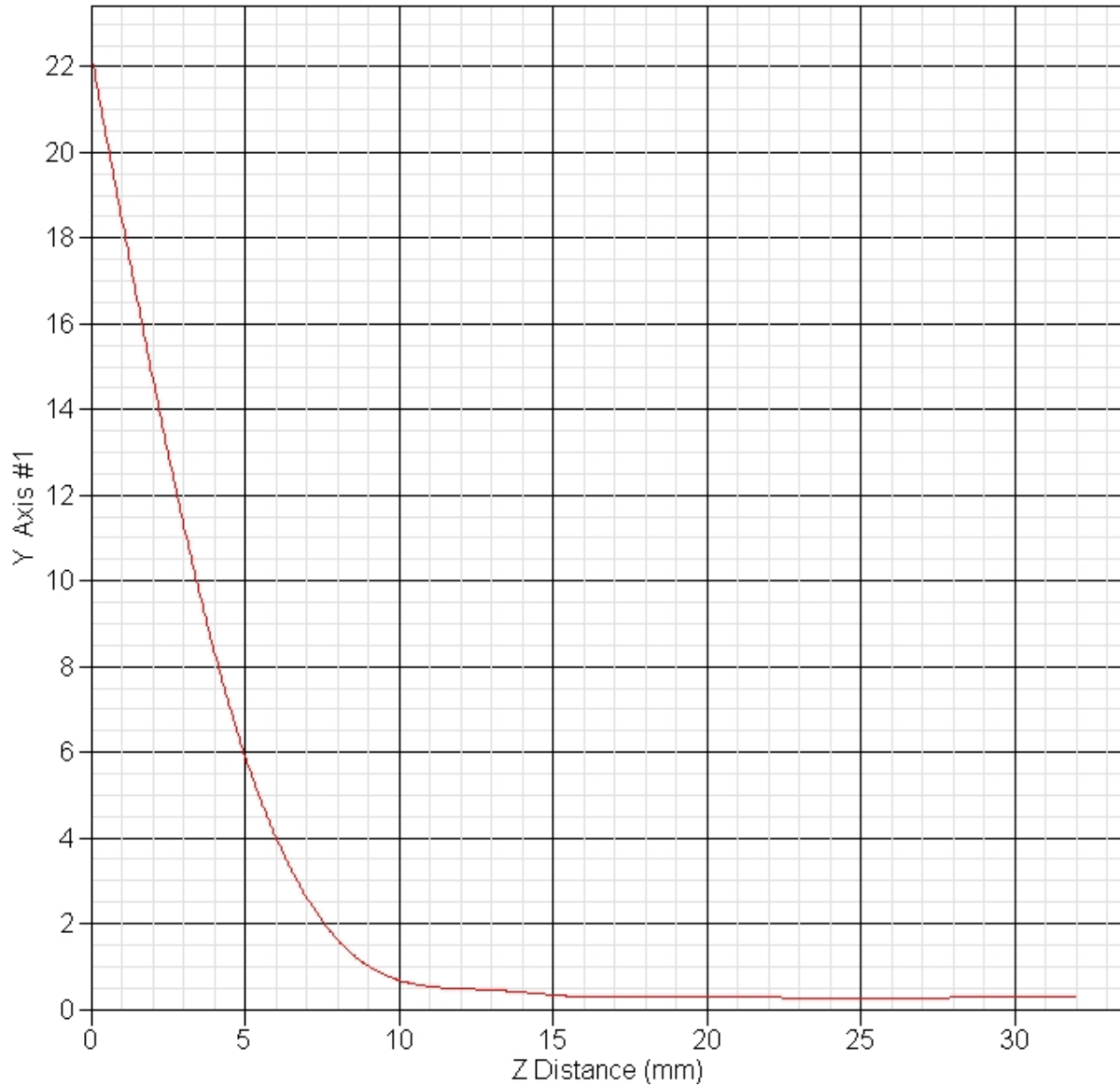
Other Data

DUT Position : Touch
 Separation : 10 mm
 Channel : Mid - 5800



1 gram SAR value : 6.218 W/kg
 10 gram SAR value : 1.832 W/kg
 Area Scan Peak SAR : 7.655 W/kg
 Zoom Scan Peak SAR : 22.317 W/kg

SAR-Z Axis
at Hotspot x:10.30 y:-2.30



Appendix B – SAR Test Data Plots

SAR Test Report

By Operator : Jay
Measurement Date : 08-Mar-2006
Starting Time : 08-Mar-2006 07:36:26 PM
End Time : 08-Mar-2006 07:49:24 PM
Scanning Time : 778 secs

Product Data

Device Name : Motion Computing
Serial No. : 20401001
Type : Other
Model : T004
Frequency : 2450.00 MHz
Max. Transmit Pwr : 0.065 W
Drift Time : 0 min(s)
Length : 295 mm
Width : 245 mm
Depth : 23 mm
Antenna Type : Internal - Main
Orientation : End
Power Drift-Start : 1.172 W/kg
Power Drift-Finish: 1.194 W/kg
Power Drift (%) : 1.883

Phantom Data

Name : APREL-Uni
Type : Uni-Phantom
Size (mm) : 280 x 280 x 200
Serial No. : System Default
Location : Center
Description : Uni-Phantom

Tissue Data

Type : BODY
Serial No. : 2450
Frequency : 2450.00 MHz
Last Calib. Date : 08-Mar-2006
Temperature : 20.00 °C
Ambient Temp. : 22.00 °C
Humidity : 44.00 RH%
Epsilon : 51.39 F/m
Sigma : 1.90 S/m
Density : 1000.00 kg/cu. m

Probe Data

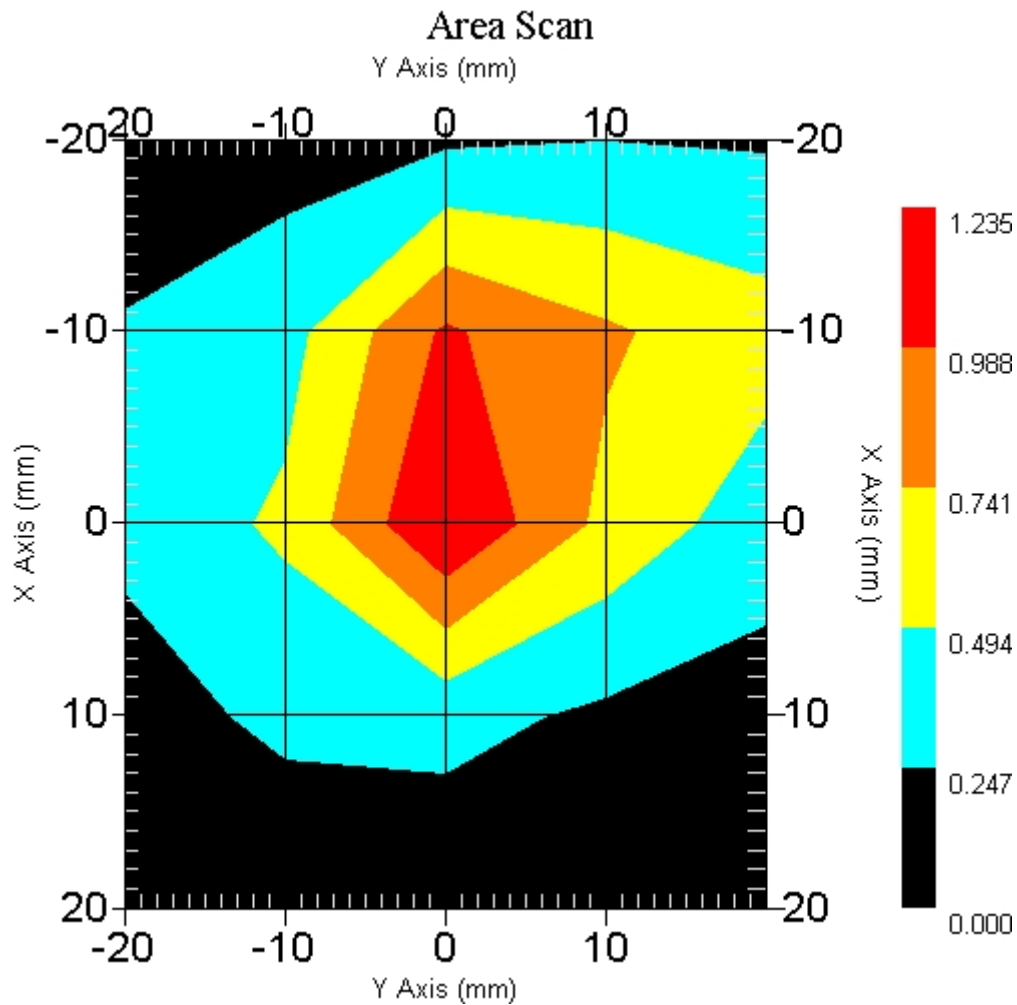
Name : Probe 215 - RFEL
Model : E020
Type : E-Field Triangle
Serial No. : 215
Last Calib. Date : 10-Jun-2005
Frequency : 2450.00 MHz
Duty Cycle Factor: 1
Conversion Factor: 4.6
Probe Sensitivity: 1.20 1.20 1.20 $\mu\text{V}/(\text{V}/\text{m})^2$
Compression Point: 95.00 mV
Offset : 1.56 mm

Measurement Data

Crest Factor : 1
 Scan Type : Complete
 Tissue Temp. : 20.00 °C
 Ambient Temp. : 22.00 °C
 Set-up Date : 08-Mar-2006
 Set-up Time : 12:20:11 PM
 Area Scan : 5x5x1 : Measurement x=10mm, y=10mm, z=4mm
 Zoom Scan : 5x5x8 : Measurement x=8mm, y=8mm, z=4mm

Other Data

DUT Position : End
 Separation : 0
 Channel : Low - 1



1 gram SAR value : 0.939 W/kg
 10 gram SAR value : 0.434 W/kg
 Area Scan Peak SAR : 1.234 W/kg
 Zoom Scan Peak SAR : 2.011 W/kg

SAR Test Report

By Operator : Jay
Measurement Date : 09-Mar-2006
Starting Time : 09-Mar-2006 09:16:36 AM
End Time : 09-Mar-2006 09:29:27 AM
Scanning Time : 771 secs

Product Data

Device Name : Motion Computing
Serial No. : 20401001
Type : Other
Model : T004
Frequency : 2450.00 MHz
Max. Transmit Pwr : 0.065 W
Drift Time : 0 min(s)
Length : 295 mm
Width : 245 mm
Depth : 23 mm
Antenna Type : Internal - Main
Orientation : End
Power Drift-Start : 1.420 W/kg
Power Drift-Finish: 1.449 W/kg
Power Drift (%) : 2.042

Phantom Data

Name : APREL-Uni
Type : Uni-Phantom
Size (mm) : 280 x 280 x 200
Serial No. : System Default
Location : Center
Description : Uni-Phantom

Tissue Data

Type : BODY
Serial No. : 2450
Frequency : 2450.00 MHz
Last Calib. Date : 09-Mar-2006
Temperature : 20.00 °C
Ambient Temp. : 22.00 °C
Humidity : 44.00 RH%
Epsilon : 51.72 F/m
Sigma : 1.95 S/m
Density : 1000.00 kg/cu. m

Probe Data

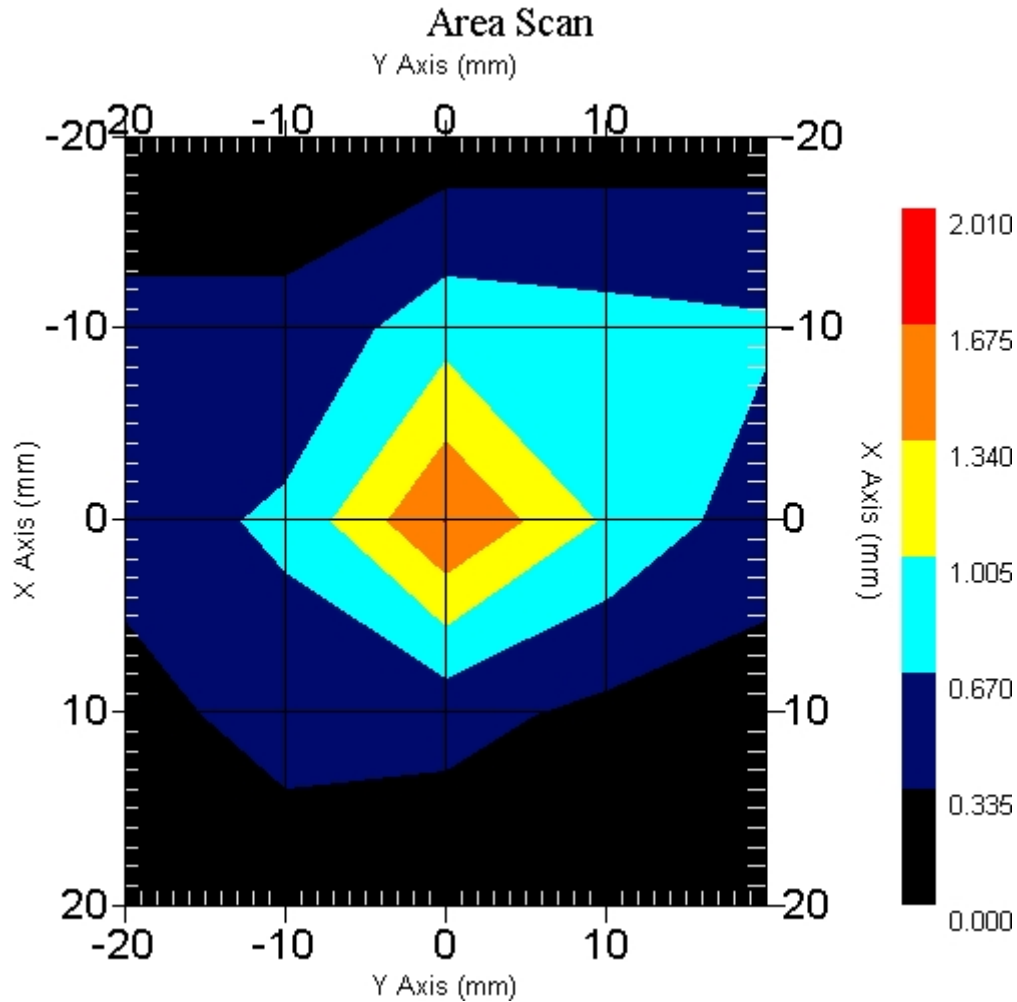
Name : Probe 215 - RFEL
Model : E020
Type : E-Field Triangle
Serial No. : 215
Last Calib. Date : 10-Jun-2005
Frequency : 2450.00 MHz
Duty Cycle Factor: 1
Conversion Factor: 4.6
Probe Sensitivity: 1.20 1.20 1.20 $\mu\text{V}/(\text{V}/\text{m})^2$
Compression Point: 95.00 mV
Offset : 1.56 mm

Measurement Data

Crest Factor : 1
 Scan Type : Complete
 Tissue Temp. : 20.00 °C
 Ambient Temp. : 22.00 °C
 Set-up Date : 09-Mar-2006
 Set-up Time : 12:20:11 PM
 Area Scan : 5x5x1 : Measurement x=10mm, y=10mm, z=4mm
 Zoom Scan : 5x5x8 : Measurement x=8mm, y=8mm, z=4mm

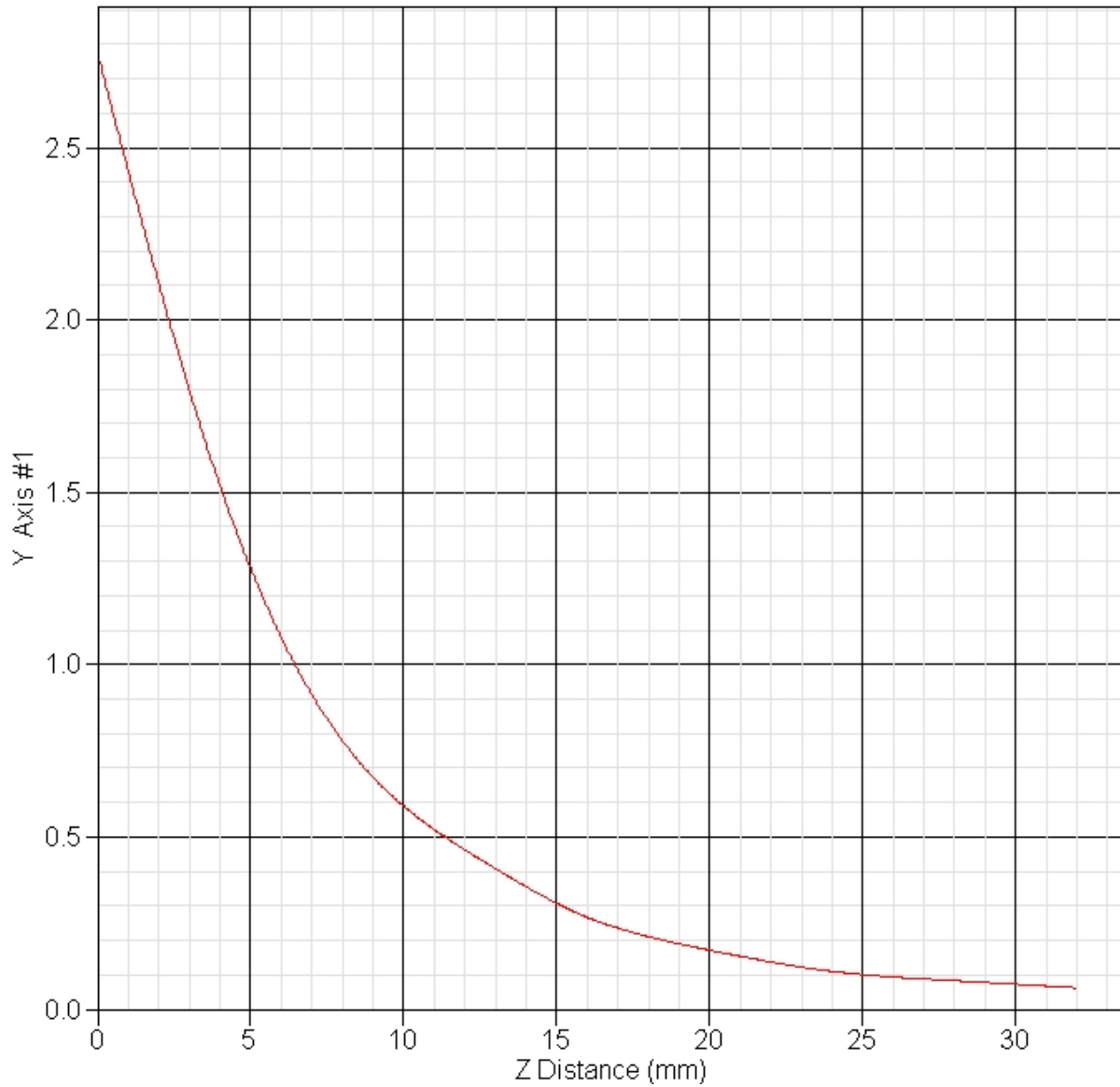
Other Data

DUT Position : End
 Separation : 0
 Channel : Mid - 6



1 gram SAR value : 1.227 W/kg
 10 gram SAR value : 0.538 W/kg
 Area Scan Peak SAR : 1.677 W/kg
 Zoom Scan Peak SAR : 2.772 W/kg

SAR-Z Axis
at Hotspot $x:0.30$ $y:-0.30$



SAR Test Report

By Operator : Jay
Measurement Date : 09-Mar-2006
Starting Time : 09-Mar-2006 09:36:09 AM
End Time : 09-Mar-2006 09:48:59 AM
Scanning Time : 770 secs

Product Data

Device Name : Motion Computing
Serial No. : 20401001
Type : Other
Model : T004
Frequency : 2450.00 MHz
Max. Transmit Pwr : 0.065 W
Drift Time : 0 min(s)
Length : 295 mm
Width : 245 mm
Depth : 23 mm
Antenna Type : Internal - Main
Orientation : End
Power Drift-Start : 1.610 W/kg
Power Drift-Finish: 1.569 W/kg
Power Drift (%) : -2.547

Phantom Data

Name : APREL-Uni
Type : Uni-Phantom
Size (mm) : 280 x 280 x 200
Serial No. : System Default
Location : Center
Description : Uni-Phantom

Tissue Data

Type : BODY
Serial No. : 2450
Frequency : 2450.00 MHz
Last Calib. Date : 09-Mar-2006
Temperature : 20.00 °C
Ambient Temp. : 22.00 °C
Humidity : 44.00 RH%
Epsilon : 51.72 F/m
Sigma : 1.95 S/m
Density : 1000.00 kg/cu. m

Probe Data

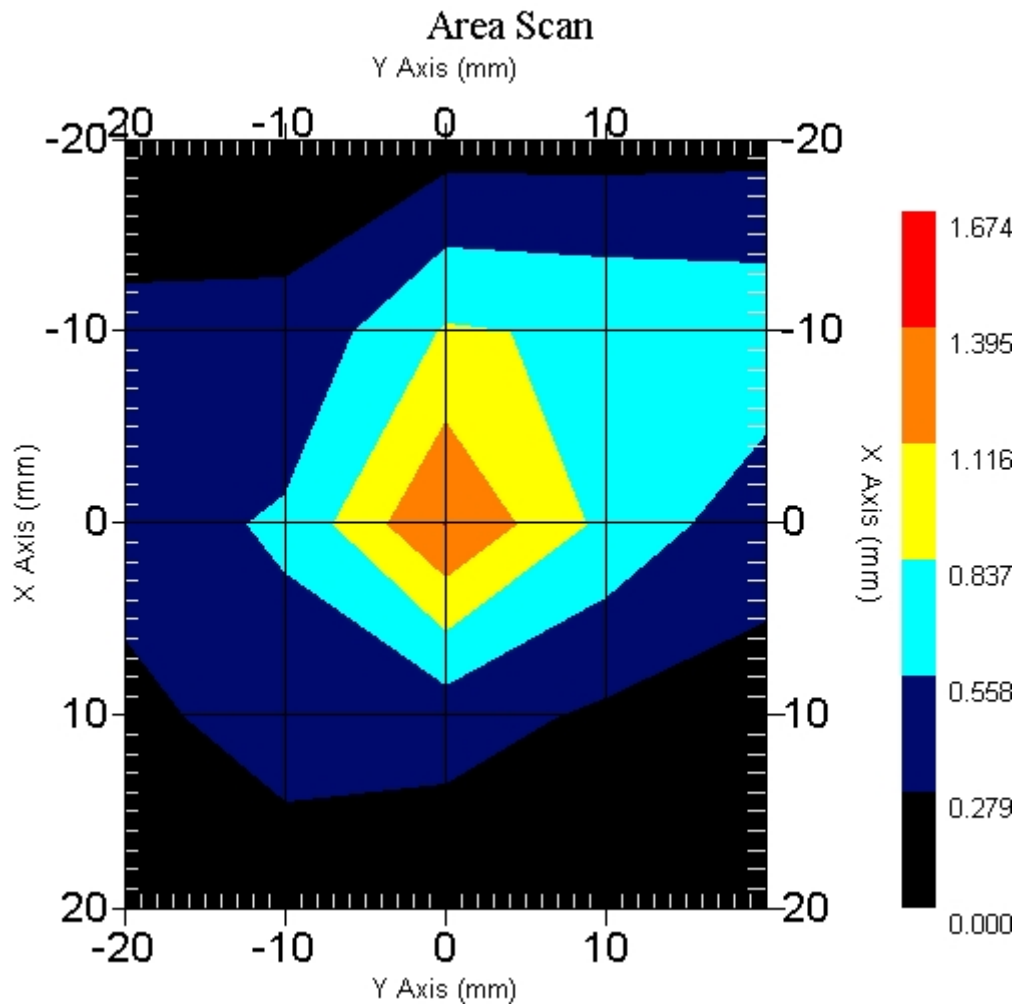
Name : Probe 215 - RFEL
Model : E020
Type : E-Field Triangle
Serial No. : 215
Last Calib. Date : 10-Jun-2005
Frequency : 2450.00 MHz
Duty Cycle Factor: 1
Conversion Factor: 4.6
Probe Sensitivity: 1.20 1.20 1.20 $\mu\text{V}/(\text{V}/\text{m})^2$
Compression Point: 95.00 mV
Offset : 1.56 mm

Measurement Data

Crest Factor : 1
 Scan Type : Complete
 Tissue Temp. : 20.00 °C
 Ambient Temp. : 22.00 °C
 Set-up Date : 09-Mar-2006
 Set-up Time : 12:20:11 PM
 Area Scan : 5x5x1 : Measurement x=10mm, y=10mm, z=4mm
 Zoom Scan : 5x5x8 : Measurement x=8mm, y=8mm, z=4mm

Other Data

DUT Position : End
 Separation : 0
 Channel : High - 11



1 gram SAR value : 1.062 W/kg
 10 gram SAR value : 0.461 W/kg
 Area Scan Peak SAR : 1.396 W/kg
 Zoom Scan Peak SAR : 2.452 W/kg

SAR Test Report

By Operator : Jay
Measurement Date : 09-Mar-2006
Starting Time : 09-Mar-2006 10:38:09 AM
End Time : 09-Mar-2006 10:51:10 AM
Scanning Time : 781 secs

Product Data

Device Name : Motion Computing
Serial No. : 20401001
Type : Other
Model : T004
Frequency : 2450.00 MHz
Max. Transmit Pwr : 0.065 W
Drift Time : 0 min(s)
Length : 295 mm
Width : 245 mm
Depth : 23 mm
Antenna Type : Internal - Aux
Orientation : End
Power Drift-Start : 1.177 W/kg
Power Drift-Finish: 1.122 W/kg
Power Drift (%) : -4.673

Phantom Data

Name : APREL-Uni
Type : Uni-Phantom
Size (mm) : 280 x 280 x 200
Serial No. : System Default
Location : Center
Description : Uni-Phantom

Tissue Data

Type : BODY
Serial No. : 2450
Frequency : 2450.00 MHz
Last Calib. Date : 09-Mar-2006
Temperature : 20.00 °C
Ambient Temp. : 22.00 °C
Humidity : 44.00 RH%
Epsilon : 51.72 F/m
Sigma : 1.95 S/m
Density : 1000.00 kg/cu. m

Probe Data

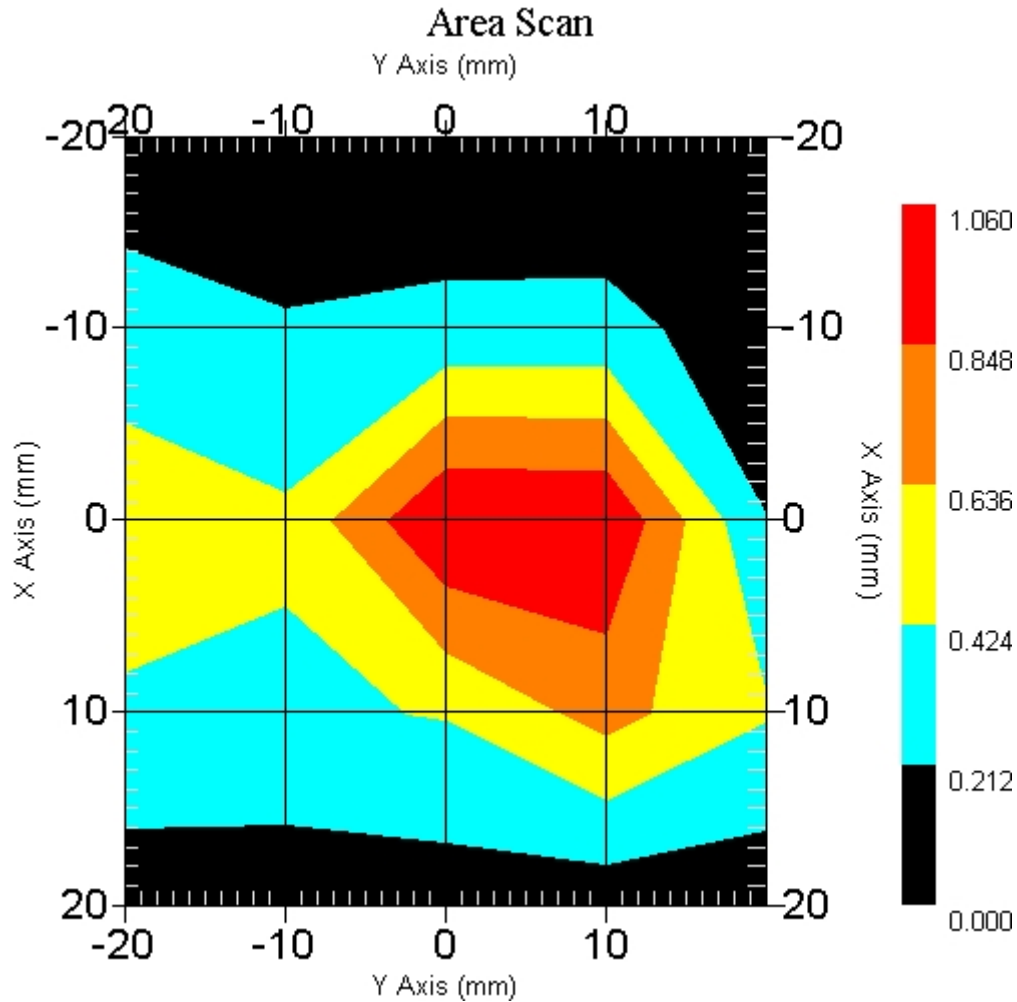
Name : Probe 215 - RFEL
Model : E020
Type : E-Field Triangle
Serial No. : 215
Last Calib. Date : 10-Jun-2005
Frequency : 2450.00 MHz
Duty Cycle Factor: 1
Conversion Factor: 4.6
Probe Sensitivity: 1.20 1.20 1.20 $\mu\text{V}/(\text{V}/\text{m})^2$
Compression Point: 95.00 mV
Offset : 1.56 mm

Measurement Data

Crest Factor : 1
 Scan Type : Complete
 Tissue Temp. : 20.00 °C
 Ambient Temp. : 22.00 °C
 Set-up Date : 09-Mar-2006
 Set-up Time : 12:20:11 PM
 Area Scan : 5x5x1 : Measurement x=10mm, y=10mm, z=4mm
 Zoom Scan : 5x5x8 : Measurement x=8mm, y=8mm, z=4mm

Other Data

DUT Position : End
 Separation : 0
 Channel : Low - 1



1 gram SAR value : 1.020 W/kg
 10 gram SAR value : 0.394 W/kg
 Area Scan Peak SAR : 1.060 W/kg
 Zoom Scan Peak SAR : 2.662 W/kg

SAR Test Report

By Operator : Jay
Measurement Date : 09-Mar-2006
Starting Time : 09-Mar-2006 10:57:10 AM
End Time : 09-Mar-2006 11:09:55 AM
Scanning Time : 765 secs

Product Data

Device Name : Motion Computing
Serial No. : 20401001
Type : Other
Model : T004
Frequency : 2450.00 MHz
Max. Transmit Pwr : 0.065 W
Drift Time : 0 min(s)
Length : 295 mm
Width : 245 mm
Depth : 23 mm
Antenna Type : Internal - Aux
Orientation : End
Power Drift-Start : 1.427 W/kg
Power Drift-Finish: 1.385 W/kg
Power Drift (%) : -2.943

Phantom Data

Name : APREL-Uni
Type : Uni-Phantom
Size (mm) : 280 x 280 x 200
Serial No. : System Default
Location : Center
Description : Uni-Phantom

Tissue Data

Type : BODY
Serial No. : 2450
Frequency : 2450.00 MHz
Last Calib. Date : 09-Mar-2006
Temperature : 20.00 °C
Ambient Temp. : 22.00 °C
Humidity : 44.00 RH%
Epsilon : 51.72 F/m
Sigma : 1.95 S/m
Density : 1000.00 kg/cu. m

Probe Data

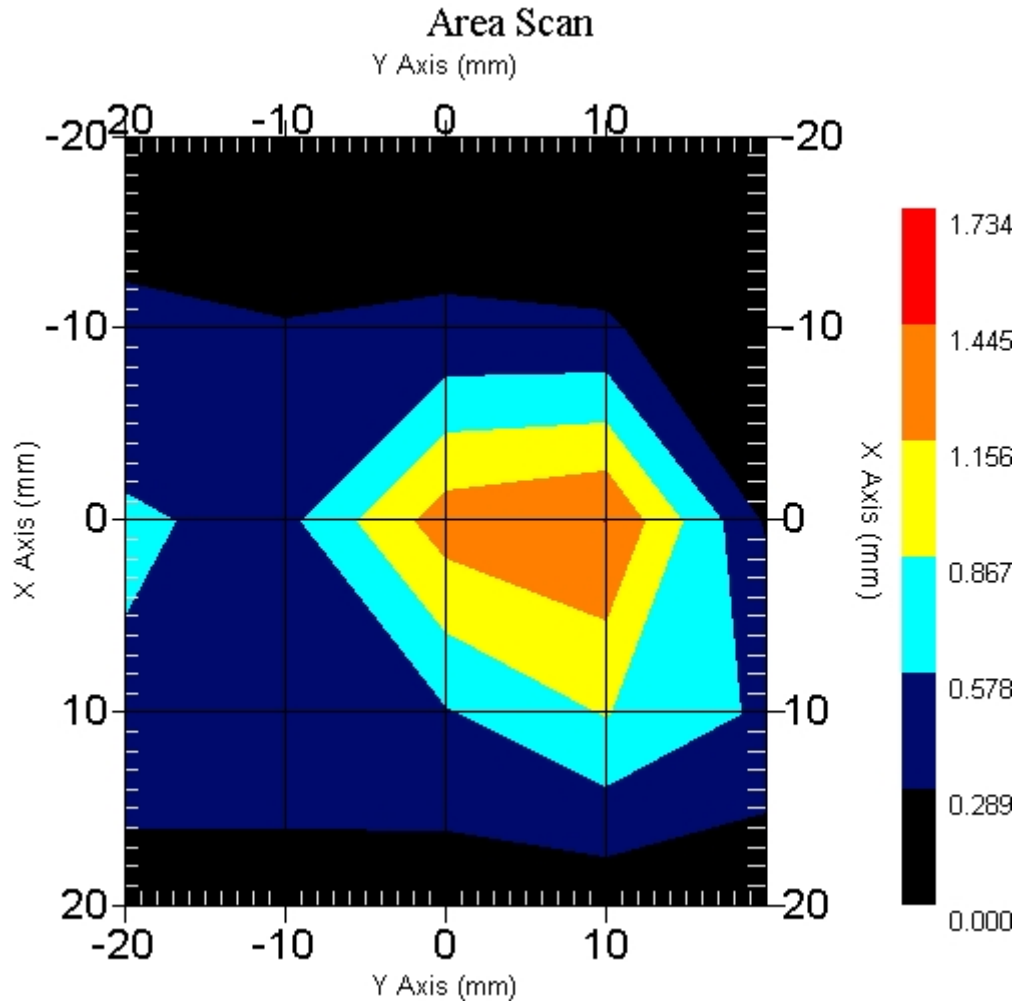
Name : Probe 215 - RFEL
Model : E020
Type : E-Field Triangle
Serial No. : 215
Last Calib. Date : 10-Jun-2005
Frequency : 2450.00 MHz
Duty Cycle Factor: 1
Conversion Factor: 4.6
Probe Sensitivity: 1.20 1.20 1.20 $\mu\text{V}/(\text{V}/\text{m})^2$
Compression Point: 95.00 mV
Offset : 1.56 mm

Measurement Data

Crest Factor : 1
 Scan Type : Complete
 Tissue Temp. : 20.00 °C
 Ambient Temp. : 22.00 °C
 Set-up Date : 09-Mar-2006
 Set-up Time : 12:20:11 PM
 Area Scan : 5x5x1 : Measurement x=10mm, y=10mm, z=4mm
 Zoom Scan : 5x5x8 : Measurement x=8mm, y=8mm, z=4mm

Other Data

DUT Position : End
 Separation : 0
 Channel : Mid - 6



1 gram SAR value : 1.220 W/kg
 10 gram SAR value : 0.486 W/kg
 Area Scan Peak SAR : 1.446 W/kg
 Zoom Scan Peak SAR : 3.182 W/kg

SAR Test Report

By Operator : Jay
Measurement Date : 09-Mar-2006
Starting Time : 09-Mar-2006 11:13:08 AM
End Time : 09-Mar-2006 11:26:02 AM
Scanning Time : 774 secs

Product Data

Device Name : Motion Computing
Serial No. : 20401001
Type : Other
Model : T004
Frequency : 2450.00 MHz
Max. Transmit Pwr : 0.065 W
Drift Time : 0 min(s)
Length : 295 mm
Width : 245 mm
Depth : 23 mm
Antenna Type : Internal - Aux
Orientation : End
Power Drift-Start : 1.280 W/kg
Power Drift-Finish: 1.342 W/kg
Power Drift (%) : 4.844

Phantom Data

Name : APREL-Uni
Type : Uni-Phantom
Size (mm) : 280 x 280 x 200
Serial No. : System Default
Location : Center
Description : Uni-Phantom

Tissue Data

Type : BODY
Serial No. : 2450
Frequency : 2450.00 MHz
Last Calib. Date : 09-Mar-2006
Temperature : 20.00 °C
Ambient Temp. : 22.00 °C
Humidity : 44.00 RH%
Epsilon : 51.72 F/m
Sigma : 1.95 S/m
Density : 1000.00 kg/cu. m

Probe Data

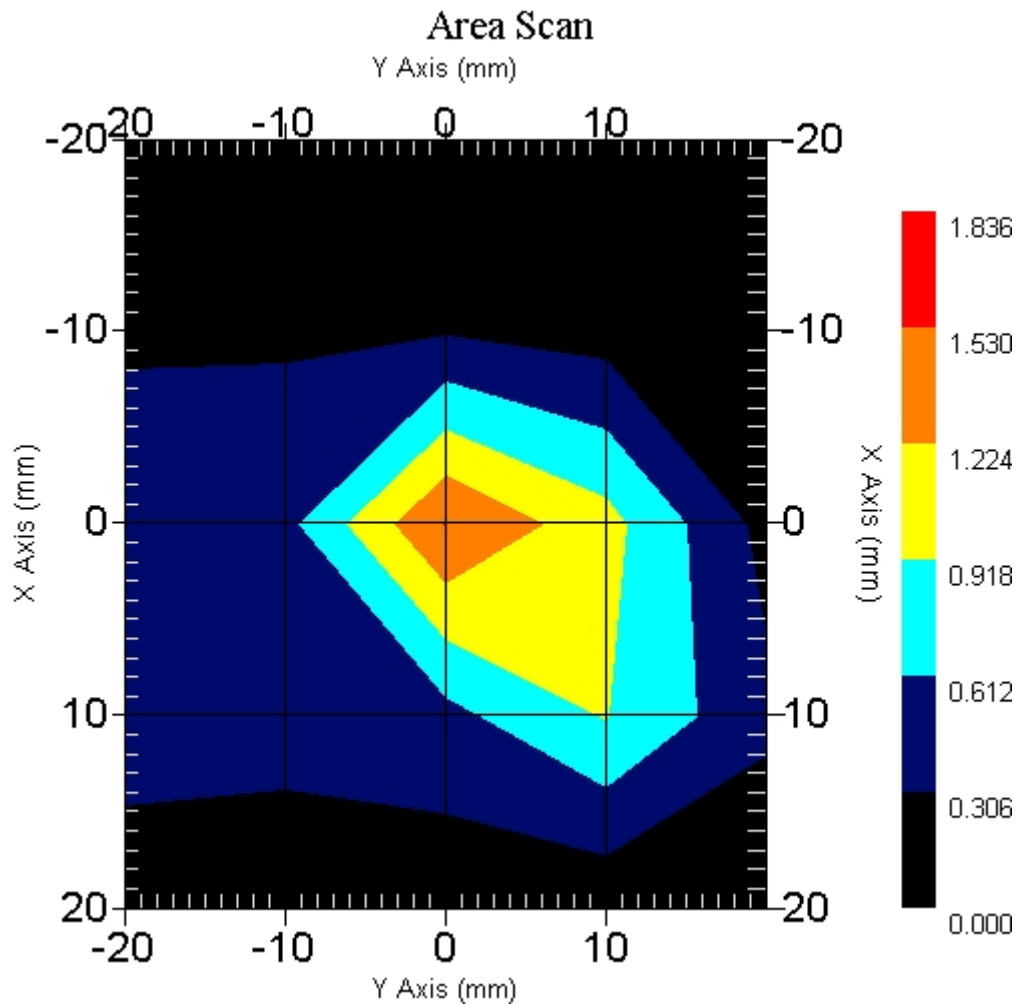
Name : Probe 215 - RFEL
Model : E020
Type : E-Field Triangle
Serial No. : 215
Last Calib. Date : 10-Jun-2005
Frequency : 2450.00 MHz
Duty Cycle Factor: 1
Conversion Factor: 4.6
Probe Sensitivity: 1.20 1.20 1.20 $\mu\text{V}/(\text{V}/\text{m})^2$
Compression Point: 95.00 mV
Offset : 1.56 mm

Measurement Data

Crest Factor : 1
 Scan Type : Complete
 Tissue Temp. : 20.00 °C
 Ambient Temp. : 22.00 °C
 Set-up Date : 09-Mar-2006
 Set-up Time : 12:20:11 PM
 Area Scan : 5x5x1 : Measurement x=10mm, y=10mm, z=4mm
 Zoom Scan : 5x5x8 : Measurement x=8mm, y=8mm, z=4mm

Other Data

DUT Position : End
 Separation : 0
 Channel : High - 11



1 gram SAR value : 1.128 W/kg
 10 gram SAR value : 0.452 W/kg
 Area Scan Peak SAR : 1.532 W/kg
 Zoom Scan Peak SAR : 2.772 W/kg

SAR Test Report

By Operator : Jay
Measurement Date : 08-Mar-2006
Starting Time : 08-Mar-2006 01:36:20 PM
End Time : 08-Mar-2006 01:49:26 PM
Scanning Time : 786 secs

Product Data

Device Name : Motion Computing
Serial No. : 20401001
Type : Other
Model : T004
Frequency : 2450.00 MHz
Max. Transmit Pwr : 0.065 W
Drift Time : 0 min(s)
Length : 295 mm
Width : 245 mm
Depth : 23 mm
Antenna Type : Internal - Main
Orientation : Back
Power Drift-Start : 0.472 W/kg
Power Drift-Finish: 0.461 W/kg
Power Drift (%) : -2.331

Phantom Data

Name : APREL-Uni
Type : Uni-Phantom
Size (mm) : 280 x 280 x 200
Serial No. : System Default
Location : Center
Description : Uni-Phantom

Tissue Data

Type : BODY
Serial No. : 2450
Frequency : 2450.00 MHz
Last Calib. Date : 08-Mar-2006
Temperature : 20.00 °C
Ambient Temp. : 22.00 °C
Humidity : 44.00 RH%
Epsilon : 51.39 F/m
Sigma : 1.90 S/m
Density : 1000.00 kg/cu. m

Probe Data

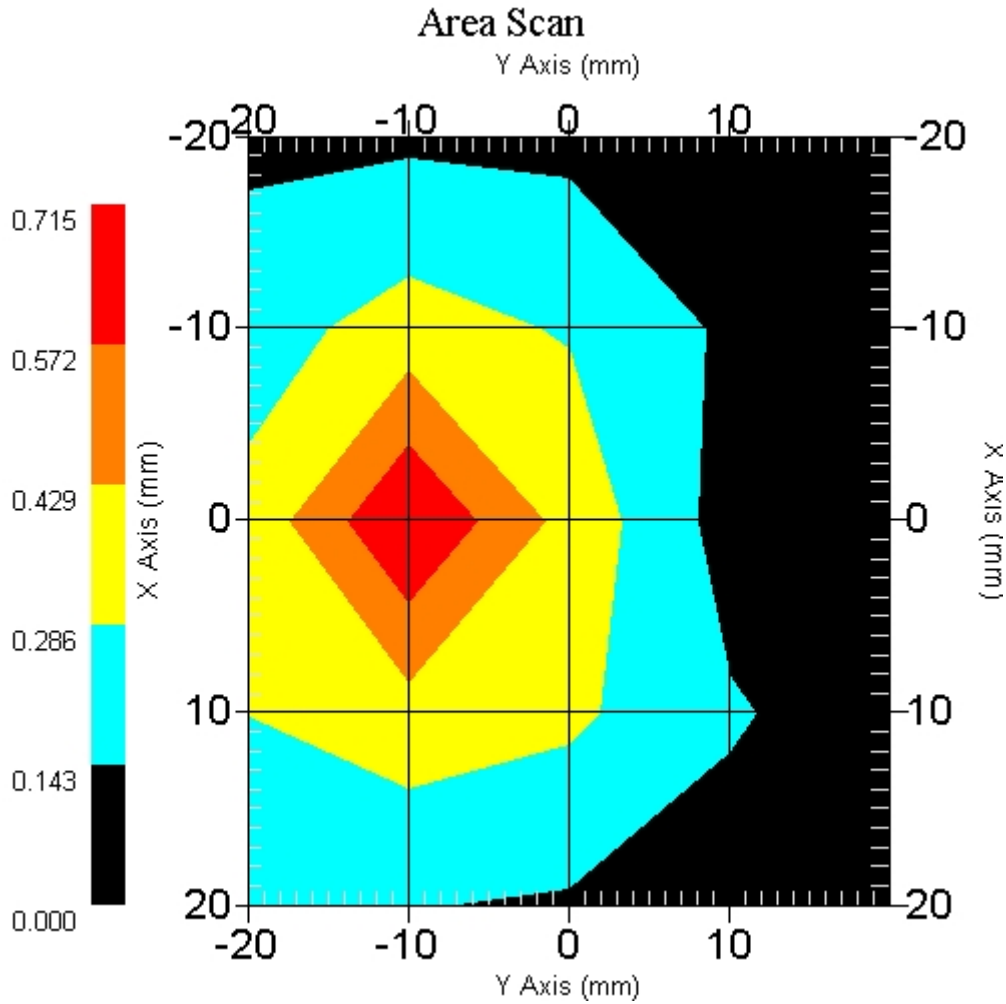
Name : Probe 215 - RFEL
Model : E020
Type : E-Field Triangle
Serial No. : 215
Last Calib. Date : 10-Jun-2005
Frequency : 2450.00 MHz
Duty Cycle Factor: 1
Conversion Factor: 4.6
Probe Sensitivity: 1.20 1.20 1.20 $\mu\text{V}/(\text{V}/\text{m})^2$
Compression Point: 95.00 mV
Offset : 1.56 mm

Measurement Data

Crest Factor : 1
 Scan Type : Complete
 Tissue Temp. : 20.00 °C
 Ambient Temp. : 22.00 °C
 Set-up Date : 08-Mar-2006
 Set-up Time : 12:20:11 PM
 Area Scan : 5x5x1 : Measurement x=10mm, y=10mm, z=4mm
 Zoom Scan : 5x5x8 : Measurement x=8mm, y=8mm, z=4mm

Other Data

DUT Position : Back
 Separation : 0
 Channel : Mid - 6



1 gram SAR value : 0.544 W/kg
 10 gram SAR value : 0.257 W/kg
 Area Scan Peak SAR : 0.714 W/kg
 Zoom Scan Peak SAR : 1.191 W/kg

SAR Test Report

By Operator : Jay
Measurement Date : 08-Mar-2006
Starting Time : 08-Mar-2006 03:16:08 PM
End Time : 08-Mar-2006 03:29:16 PM
Scanning Time : 788 secs

Product Data

Device Name : Motion Computing
Serial No. : 20401001
Type : Other
Model : T004
Frequency : 2450.00 MHz
Max. Transmit Pwr : 0.065 W
Drift Time : 0 min(s)
Length : 295 mm
Width : 245 mm
Depth : 23 mm
Antenna Type : Internal - Aux
Orientation : Back
Power Drift-Start : 0.214 W/kg
Power Drift-Finish: 0.204 W/kg
Power Drift (%) : -4.673

Phantom Data

Name : APREL-Uni
Type : Uni-Phantom
Size (mm) : 280 x 280 x 200
Serial No. : System Default
Location : Center
Description : Uni-Phantom

Tissue Data

Type : BODY
Serial No. : 2450
Frequency : 2450.00 MHz
Last Calib. Date : 08-Mar-2006
Temperature : 20.00 °C
Ambient Temp. : 22.00 °C
Humidity : 44.00 RH%
Epsilon : 51.39 F/m
Sigma : 1.90 S/m
Density : 1000.00 kg/cu. m

Probe Data

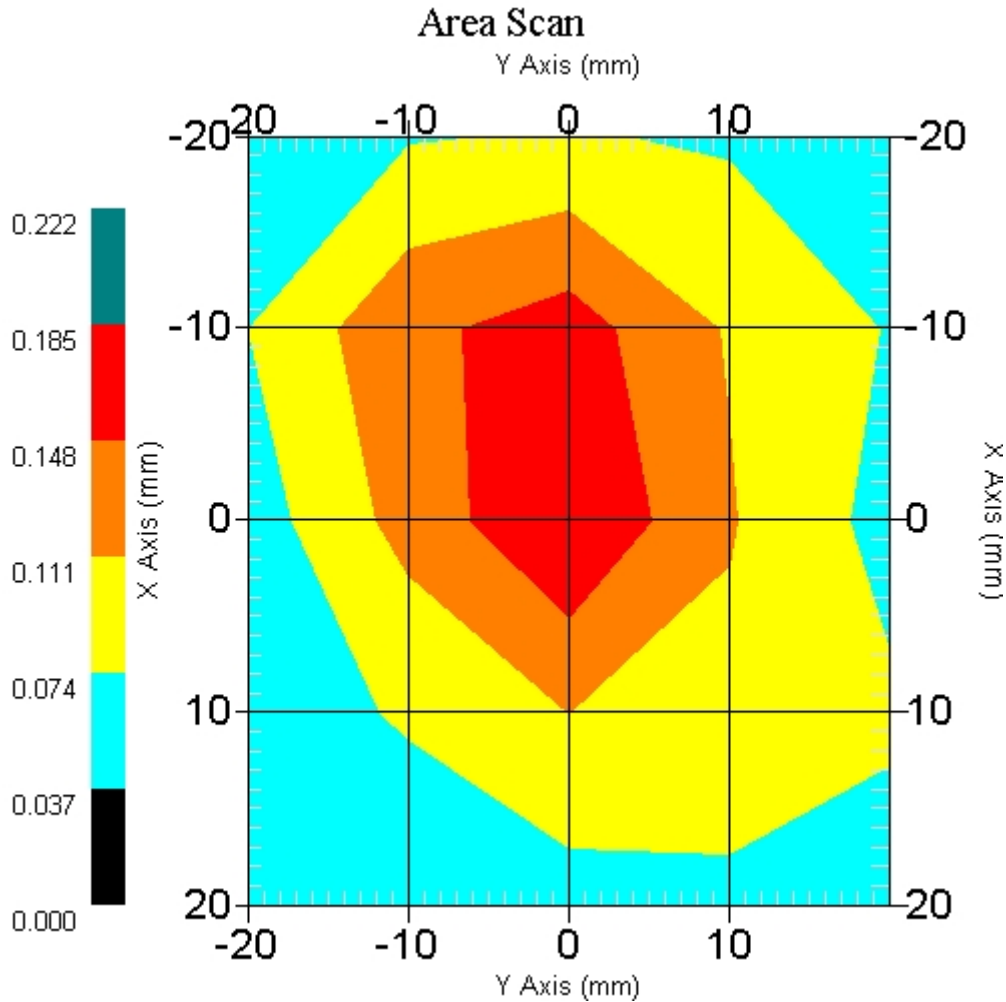
Name : Probe 215 - RFEL
Model : E020
Type : E-Field Triangle
Serial No. : 215
Last Calib. Date : 10-Jun-2005
Frequency : 2450.00 MHz
Duty Cycle Factor: 1
Conversion Factor: 4.6
Probe Sensitivity: 1.20 1.20 1.20 $\mu\text{V}/(\text{V}/\text{m})^2$
Compression Point: 95.00 mV
Offset : 1.56 mm

Measurement Data

Crest Factor : 1
 Scan Type : Complete
 Tissue Temp. : 20.00 °C
 Ambient Temp. : 22.00 °C
 Set-up Date : 08-Mar-2006
 Set-up Time : 12:20:11 PM
 Area Scan : 5x5x1 : Measurement x=10mm, y=10mm, z=4mm
 Zoom Scan : 5x5x8 : Measurement x=8mm, y=8mm, z=4mm

Other Data

DUT Position : Back
 Separation : 0
 Channel : Mid - 6



1 gram SAR value : 0.160 W/kg
 10 gram SAR value : 0.094 W/kg
 Area Scan Peak SAR : 0.185 W/kg
 Zoom Scan Peak SAR : 0.280 W/kg

SAR Test Report

By Operator : Jay
Measurement Date : 08-Mar-2006
Starting Time : 08-Mar-2006 04:50:02 PM
End Time : 08-Mar-2006 05:14:21 PM
Scanning Time : 1459 secs

Product Data

Device Name : Motion Computing
Serial No. : 20401001
Type : Other
Model : T004
Frequency : 2450.00 MHz
Max. Transmit Pwr : 0.065 W
Drift Time : 0 min(s)
Length : 295 mm
Width : 245 mm
Depth : 23 mm
Antenna Type : Internal - Main
Orientation : Front
Power Drift-Start : 0.086 W/kg
Power Drift-Finish: 0.090 W/kg
Power Drift (%) : 4.849

Phantom Data

Name : APREL-Uni
Type : Uni-Phantom
Size (mm) : 280 x 280 x 200
Serial No. : System Default
Location : Center
Description : Uni-Phantom

Tissue Data

Type : BODY
Serial No. : 2450
Frequency : 2450.00 MHz
Last Calib. Date : 08-Mar-2006
Temperature : 20.00 °C
Ambient Temp. : 22.00 °C
Humidity : 44.00 RH%
Epsilon : 51.39 F/m
Sigma : 1.90 S/m
Density : 1000.00 kg/cu. m

Probe Data

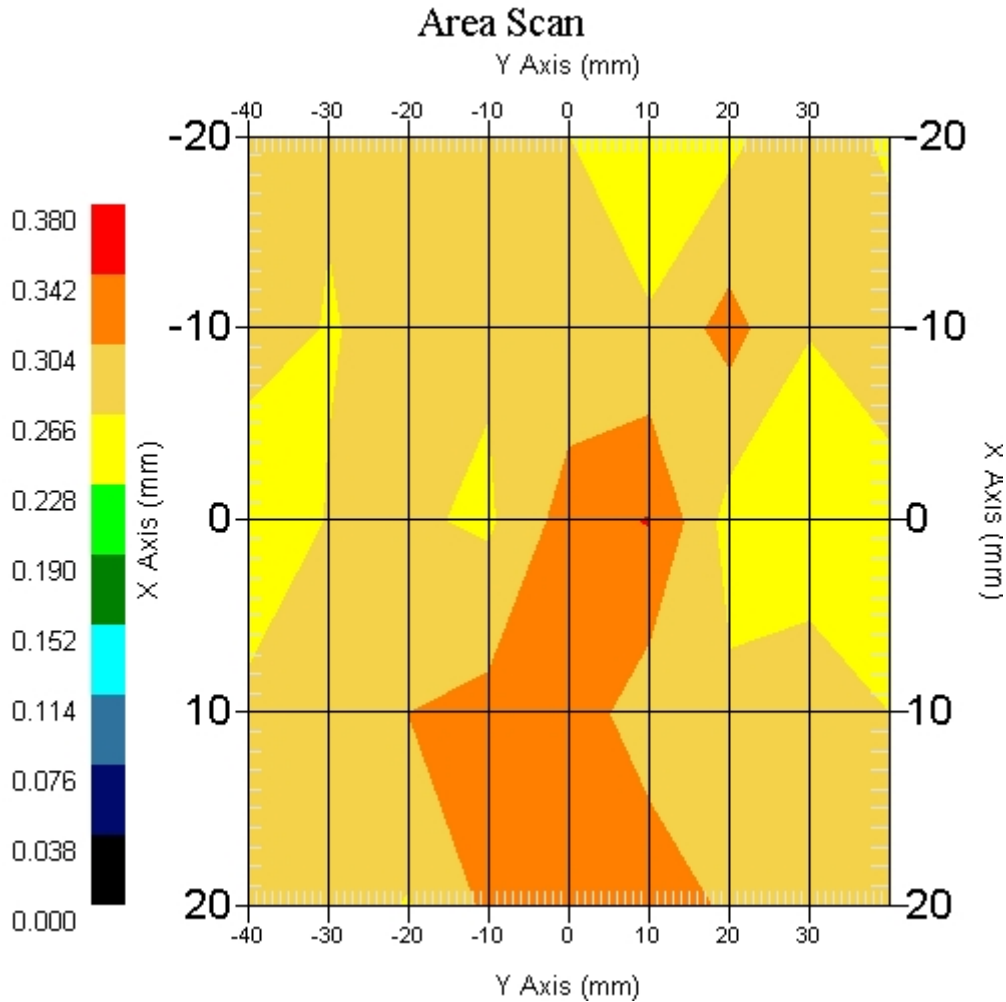
Name : Probe 215 - RFEL
Model : E020
Type : E-Field Triangle
Serial No. : 215
Last Calib. Date : 10-Jun-2005
Frequency : 2450.00 MHz
Duty Cycle Factor: 1
Conversion Factor: 4.6
Probe Sensitivity: 1.20 1.20 1.20 $\mu\text{V}/(\text{V}/\text{m})^2$
Compression Point: 95.00 mV
Offset : 1.56 mm

Measurement Data

Crest Factor : 1
 Scan Type : Complete
 Tissue Temp. : 20.00 °C
 Ambient Temp. : 22.00 °C
 Set-up Date : 08-Mar-2006
 Set-up Time : 12:20:11 PM
 Area Scan : 5x9x1 : Measurement x=10mm, y=10mm, z=4mm
 Zoom Scan : 5x5x8 : Measurement x=8mm, y=8mm, z=4mm

Other Data

DUT Position : Front
 Separation : 0
 Channel : Low - 2412



1 gram SAR value : 0.150 W/kg
 10 gram SAR value : 0.094 W/kg
 Area Scan Peak SAR : 0.179 W/kg
 Zoom Scan Peak SAR : 0.240 W/kg

SAR Test Report

By Operator : Jay
Measurement Date : 08-Mar-2006
Starting Time : 08-Mar-2006 06:13:08 PM
End Time : 08-Mar-2006 06:25:50 PM
Scanning Time : 762 secs

Product Data

Device Name : Motion Computing
Serial No. : 20401001
Type : Other
Model : T004
Frequency : 2450.00 MHz
Max. Transmit Pwr : 0.065 W
Drift Time : 0 min(s)
Length : 295 mm
Width : 245 mm
Depth : 23 mm
Antenna Type : Internal - Aux
Orientation : Front
Power Drift-Start : 0.295 W/kg
Power Drift-Finish: 0.279 W/kg
Power Drift (%) : -5.424

Phantom Data

Name : APREL-Uni
Type : Uni-Phantom
Size (mm) : 280 x 280 x 200
Serial No. : System Default
Location : Center
Description : Uni-Phantom

Tissue Data

Type : BODY
Serial No. : 2450
Frequency : 2450.00 MHz
Last Calib. Date : 08-Mar-2006
Temperature : 20.00 °C
Ambient Temp. : 22.00 °C
Humidity : 44.00 RH%
Epsilon : 51.39 F/m
Sigma : 1.90 S/m
Density : 1000.00 kg/cu. m

Probe Data

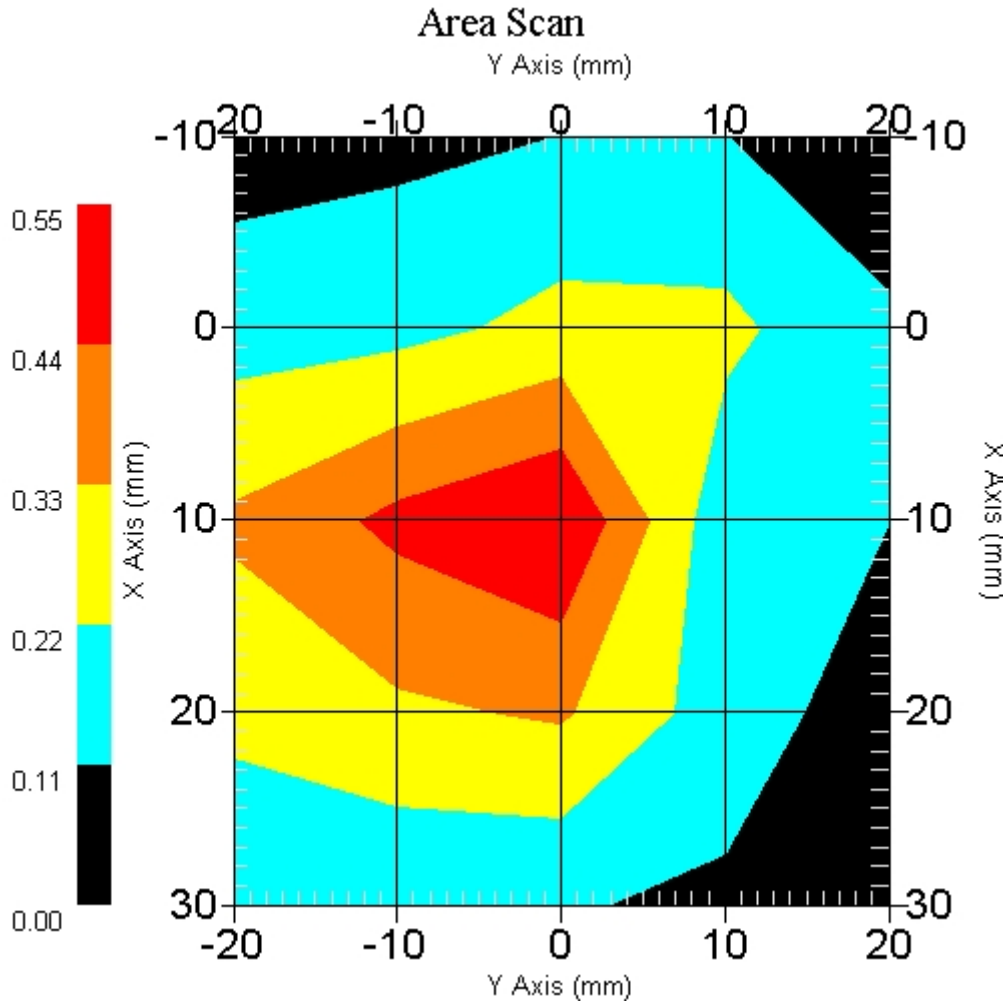
Name : Probe 215 - RFEL
Model : E020
Type : E-Field Triangle
Serial No. : 215
Last Calib. Date : 10-Jun-2005
Frequency : 2450.00 MHz
Duty Cycle Factor: 1
Conversion Factor: 4.6
Probe Sensitivity: 1.20 1.20 1.20 $\mu\text{V}/(\text{V}/\text{m})^2$
Compression Point: 95.00 mV
Offset : 1.56 mm

Measurement Data

Crest Factor : 1
 Scan Type : Complete
 Tissue Temp. : 20.00 °C
 Ambient Temp. : 22.00 °C
 Set-up Date : 08-Mar-2006
 Set-up Time : 12:20:11 PM
 Area Scan : 5x5x1 : Measurement x=10mm, y=10mm, z=4mm
 Zoom Scan : 5x5x8 : Measurement x=8mm, y=8mm, z=4mm

Other Data

DUT Position : Front
 Separation : 0
 Channel : Mid - 6



1 gram SAR value : 0.439 W/kg
 10 gram SAR value : 0.214 W/kg
 Area Scan Peak SAR : 0.548 W/kg
 Zoom Scan Peak SAR : 0.960 W/kg

SAR Test Report

By Operator : Jay
Measurement Date : 09-Mar-2006
Starting Time : 09-Mar-2006 12:53:39 PM
End Time : 09-Mar-2006 01:14:16 PM
Scanning Time : 1237 secs

Product Data

Device Name : Motion Computing
Serial No. : 20401001
Type : Other
Model : T004
Frequency : 2450.00 MHz
Max. Transmit Pwr : 0.065 W
Drift Time : 0 min(s)
Length : 295 mm
Width : 245 mm
Depth : 23 mm
Antenna Type : Internal - Main
Orientation : End
Power Drift-Start : 1.671 W/kg
Power Drift-Finish: 1.594 W/kg
Power Drift (%) : -4.608

Phantom Data

Name : APREL-Uni
Type : Uni-Phantom
Size (mm) : 280 x 280 x 200
Serial No. : System Default
Location : Center
Description : Uni-Phantom

Tissue Data

Type : BODY
Serial No. : 2450
Frequency : 2450.00 MHz
Last Calib. Date : 09-Mar-2006
Temperature : 20.00 °C
Ambient Temp. : 22.00 °C
Humidity : 44.00 RH%
Epsilon : 51.72 F/m
Sigma : 1.95 S/m
Density : 1000.00 kg/cu. m

Probe Data

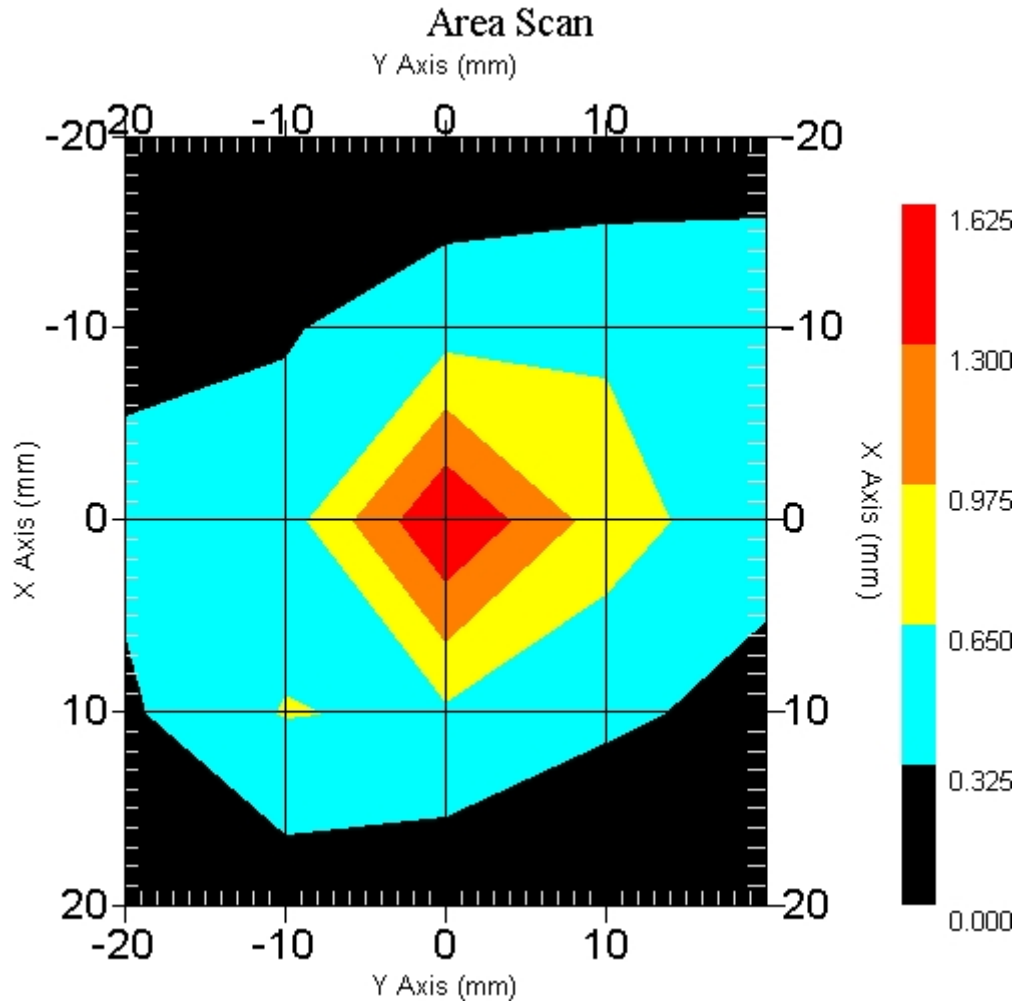
Name : Probe 215 - RFEL
Model : E020
Type : E-Field Triangle
Serial No. : 215
Last Calib. Date : 10-Jun-2005
Frequency : 2450.00 MHz
Duty Cycle Factor: 1
Conversion Factor: 4.6
Probe Sensitivity: 1.20 1.20 1.20 $\mu\text{V}/(\text{V}/\text{m})^2$
Compression Point: 95.00 mV
Offset : 1.56 mm

Measurement Data

Crest Factor : 1
 Scan Type : Complete
 Tissue Temp. : 20.00 °C
 Ambient Temp. : 22.00 °C
 Set-up Date : 09-Mar-2006
 Set-up Time : 12:20:11 PM
 Area Scan : 5x5x1 : Measurement x=10mm, y=10mm, z=4mm
 Zoom Scan : 5x5x8 : Measurement x=8mm, y=8mm, z=4mm

Other Data

DUT Position : End
 Separation : 0
 Channel : Mid - 6



1 gram SAR value : 1.143 W/kg
 10 gram SAR value : 0.475 W/kg
 Area Scan Peak SAR : 1.624 W/kg
 Zoom Scan Peak SAR : 2.862 W/kg

SAR Test Report

By Operator : Jay
Measurement Date : 09-Mar-2006
Starting Time : 09-Mar-2006 02:52:15 PM
End Time : 09-Mar-2006 03:05:04 PM
Scanning Time : 769 secs

Product Data

Device Name : Motion Computing
Serial No. : 20401001
Type : Other
Model : T004
Frequency : 2450.00 MHz
Max. Transmit Pwr : 0.065 W
Drift Time : 0 min(s)
Length : 295 mm
Width : 245 mm
Depth : 23 mm
Antenna Type : Internal - Aux
Orientation : End
Power Drift-Start : 1.461 W/kg
Power Drift-Finish: 1.393 W/kg
Power Drift (%) : -4.654

Phantom Data

Name : APREL-Uni
Type : Uni-Phantom
Size (mm) : 280 x 280 x 200
Serial No. : System Default
Location : Center
Description : Uni-Phantom

Tissue Data

Type : BODY
Serial No. : 2450
Frequency : 2450.00 MHz
Last Calib. Date : 09-Mar-2006
Temperature : 20.00 °C
Ambient Temp. : 22.00 °C
Humidity : 44.00 RH%
Epsilon : 51.72 F/m
Sigma : 1.95 S/m
Density : 1000.00 kg/cu. m

Probe Data

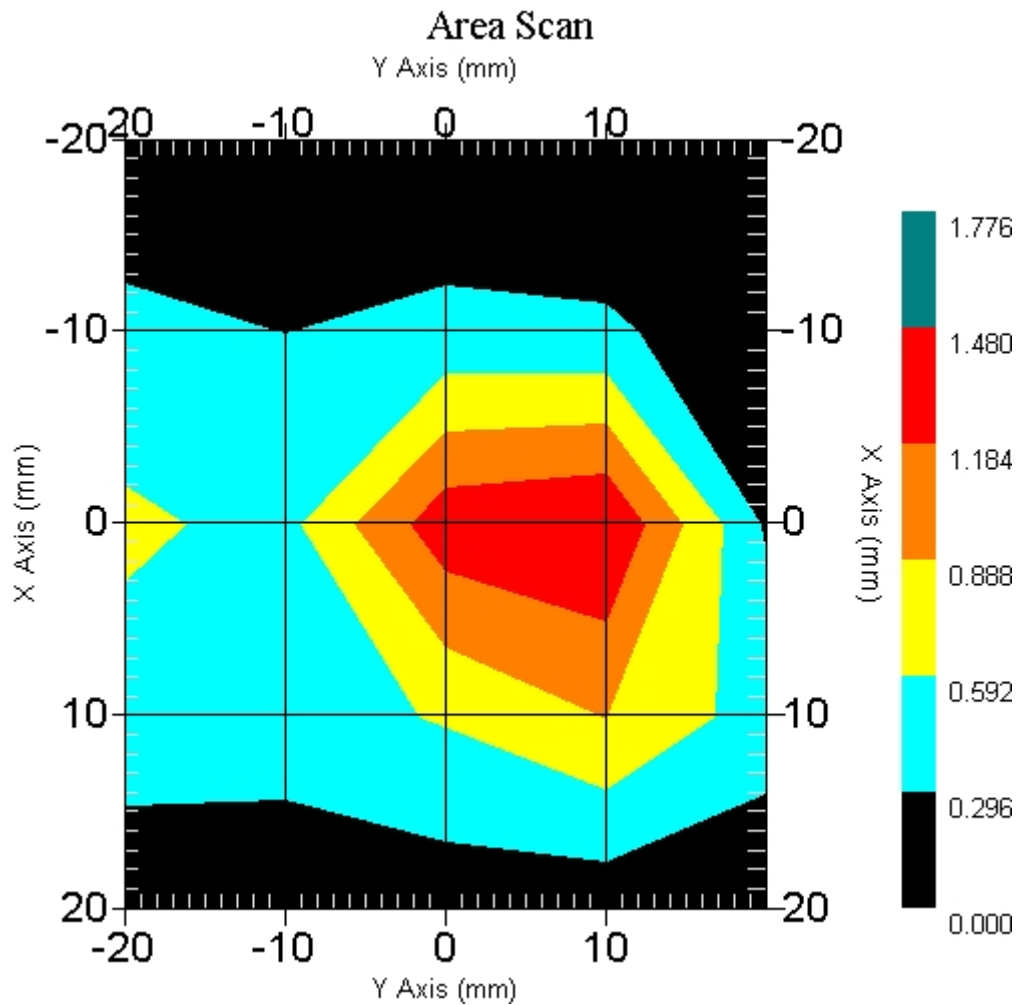
Name : Probe 215 - RFEL
Model : E020
Type : E-Field Triangle
Serial No. : 215
Last Calib. Date : 10-Jun-2005
Frequency : 2450.00 MHz
Duty Cycle Factor: 1
Conversion Factor: 4.6
Probe Sensitivity: 1.20 1.20 1.20 $\mu\text{V}/(\text{V}/\text{m})^2$
Compression Point: 95.00 mV
Offset : 1.56 mm

Measurement Data

Crest Factor : 1
 Scan Type : Complete
 Tissue Temp. : 20.00 °C
 Ambient Temp. : 22.00 °C
 Set-up Date : 09-Mar-2006
 Set-up Time : 12:20:11 PM
 Area Scan : 5x5x1 : Measurement x=10mm, y=10mm, z=4mm
 Zoom Scan : 5x5x8 : Measurement x=8mm, y=8mm, z=4mm

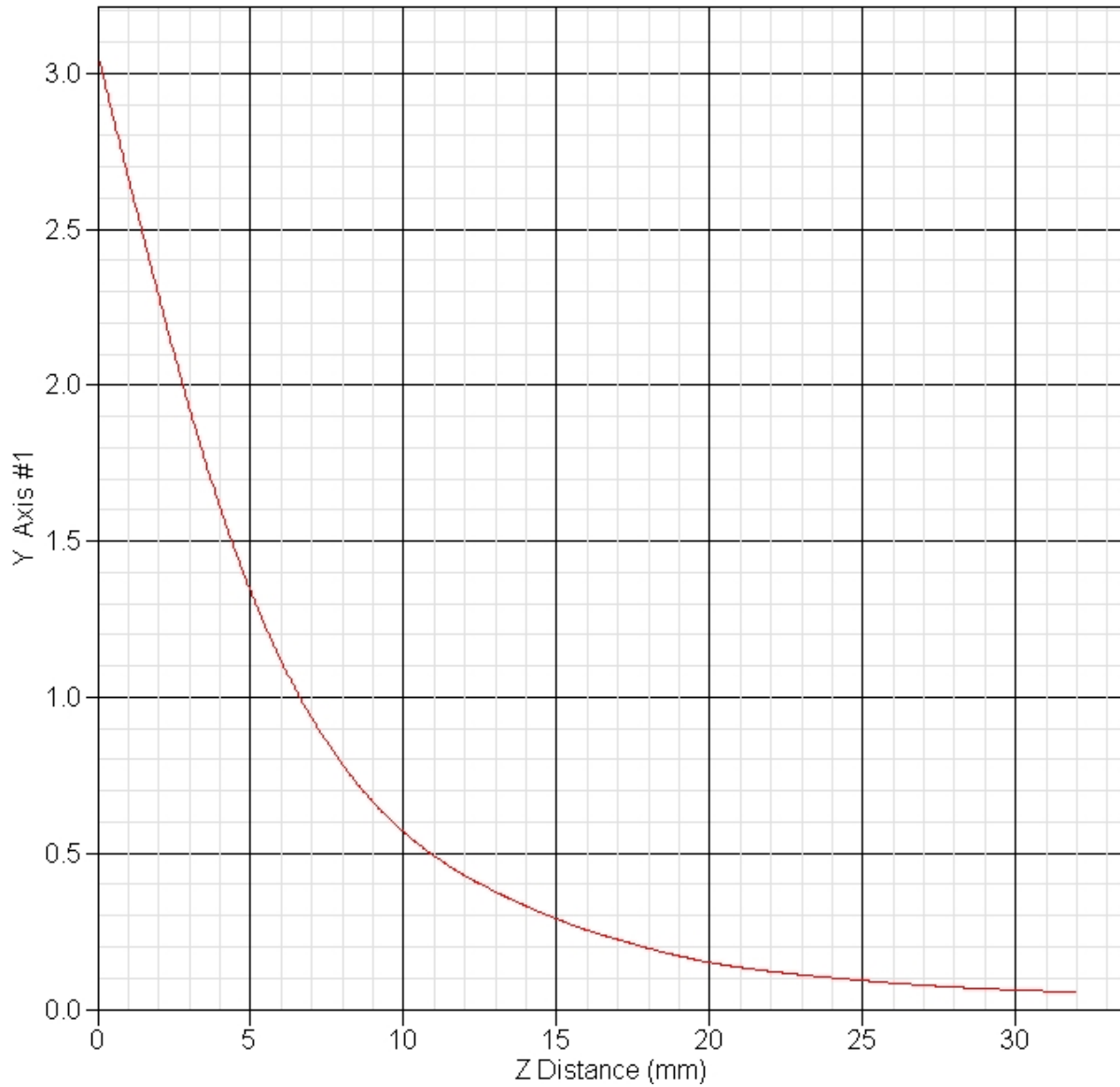
Other Data

DUT Position : End
 Separation : 0
 Channel : Mid - 6



1 gram SAR value : 1.224 W/kg
 10 gram SAR value : 0.496 W/kg
 Area Scan Peak SAR : 1.480 W/kg
 Zoom Scan Peak SAR : 3.062 W/kg

SAR-Z Axis
at Hotspot x:0.30 y:1.80



SAR Test Report

By Operator : Jay
Measurement Date : 09-Mar-2006
Starting Time : 09-Mar-2006 09:50:39 AM
End Time : 09-Mar-2006 10:03:28 AM
Scanning Time : 769 secs

Product Data

Device Name : Motion Computing
Serial No. : 20401001
Type : Other
Model : T004
Frequency : 2450.00 MHz
Max. Transmit Pwr : 0.065 W
Drift Time : 0 min(s)
Length : 295 mm
Width : 245 mm
Depth : 23 mm
Antenna Type : Internal - Main
Orientation : End
Power Drift-Start : 0.967 W/kg
Power Drift-Finish: 0.919 W/kg
Power Drift (%) : -4.964

Phantom Data

Name : APREL-Uni
Type : Uni-Phantom
Size (mm) : 280 x 280 x 200
Serial No. : System Default
Location : Center
Description : Uni-Phantom

Tissue Data

Type : BODY
Serial No. : 2450
Frequency : 2450.00 MHz
Last Calib. Date : 09-Mar-2006
Temperature : 20.00 °C
Ambient Temp. : 22.00 °C
Humidity : 44.00 RH%
Epsilon : 51.72 F/m
Sigma : 1.95 S/m
Density : 1000.00 kg/cu. m

Probe Data

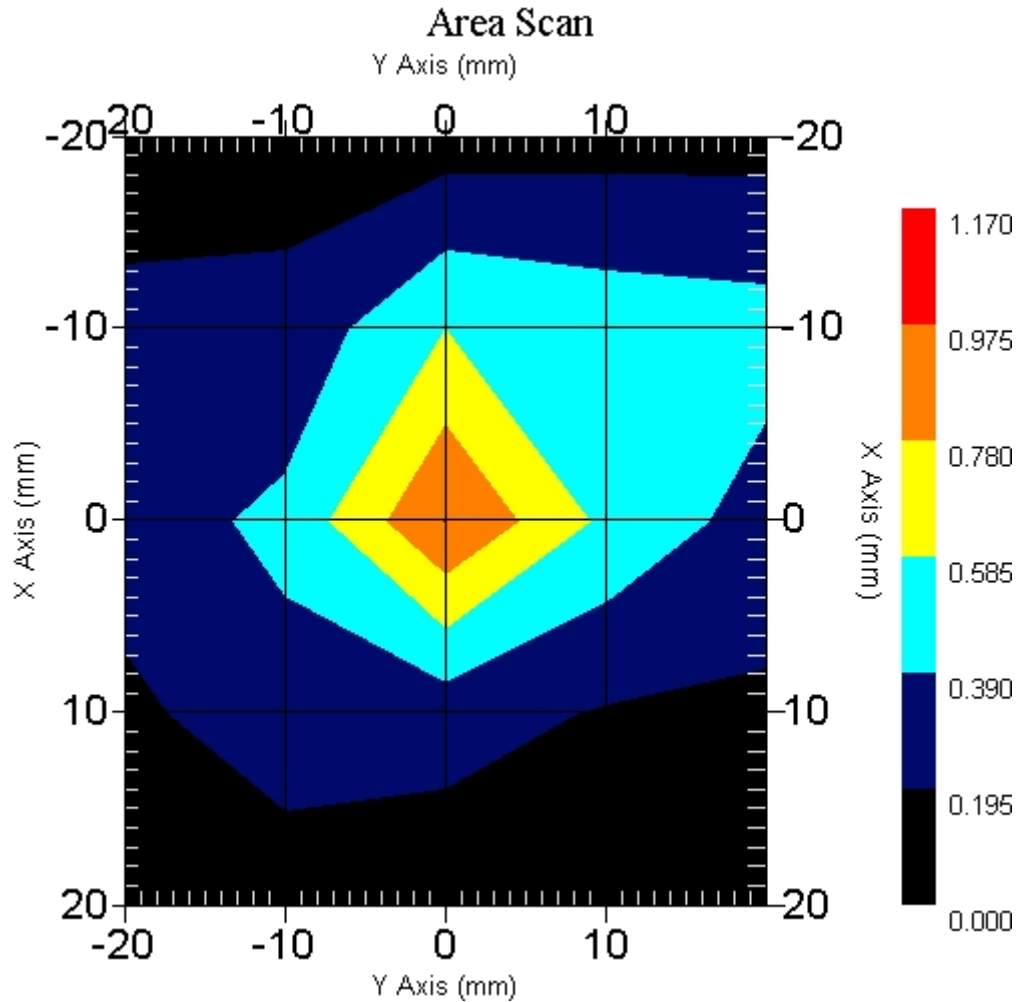
Name : Probe 215 - RFEL
Model : E020
Type : E-Field Triangle
Serial No. : 215
Last Calib. Date : 10-Jun-2005
Frequency : 2450.00 MHz
Duty Cycle Factor: 1
Conversion Factor: 4.6
Probe Sensitivity: 1.20 1.20 1.20 $\mu\text{V}/(\text{V}/\text{m})^2$
Compression Point: 95.00 mV
Offset : 1.56 mm

Measurement Data

Crest Factor : 1
 Scan Type : Complete
 Tissue Temp. : 20.00 °C
 Ambient Temp. : 22.00 °C
 Set-up Date : 09-Mar-2006
 Set-up Time : 12:20:11 PM
 Area Scan : 5x5x1 : Measurement x=10mm, y=10mm, z=4mm
 Zoom Scan : 5x5x8 : Measurement x=8mm, y=8mm, z=4mm

Other Data

DUT Position : End
 Separation : 0
 Channel : Low - 1



1 gram SAR value : 0.886 W/kg
 10 gram SAR value : 0.376 W/kg
 Area Scan Peak SAR : 0.975 W/kg
 Zoom Scan Peak SAR : 2.081 W/kg

SAR Test Report

By Operator : Jay
Measurement Date : 09-Mar-2006
Starting Time : 09-Mar-2006 10:06:29 AM
End Time : 09-Mar-2006 10:19:19 AM
Scanning Time : 770 secs

Product Data

Device Name : Motion Computing
Serial No. : 20401001
Type : Other
Model : T004
Frequency : 2450.00 MHz
Max. Transmit Pwr : 0.065 W
Drift Time : 0 min(s)
Length : 295 mm
Width : 245 mm
Depth : 23 mm
Antenna Type : Internal - Main
Orientation : End
Power Drift-Start : 0.850 W/kg
Power Drift-Finish: 0.818 W/kg
Power Drift (%) : -3.765

Phantom Data

Name : APREL-Uni
Type : Uni-Phantom
Size (mm) : 280 x 280 x 200
Serial No. : System Default
Location : Center
Description : Uni-Phantom

Tissue Data

Type : BODY
Serial No. : 2450
Frequency : 2450.00 MHz
Last Calib. Date : 09-Mar-2006
Temperature : 20.00 °C
Ambient Temp. : 22.00 °C
Humidity : 44.00 RH%
Epsilon : 51.72 F/m
Sigma : 1.95 S/m
Density : 1000.00 kg/cu. m

Probe Data

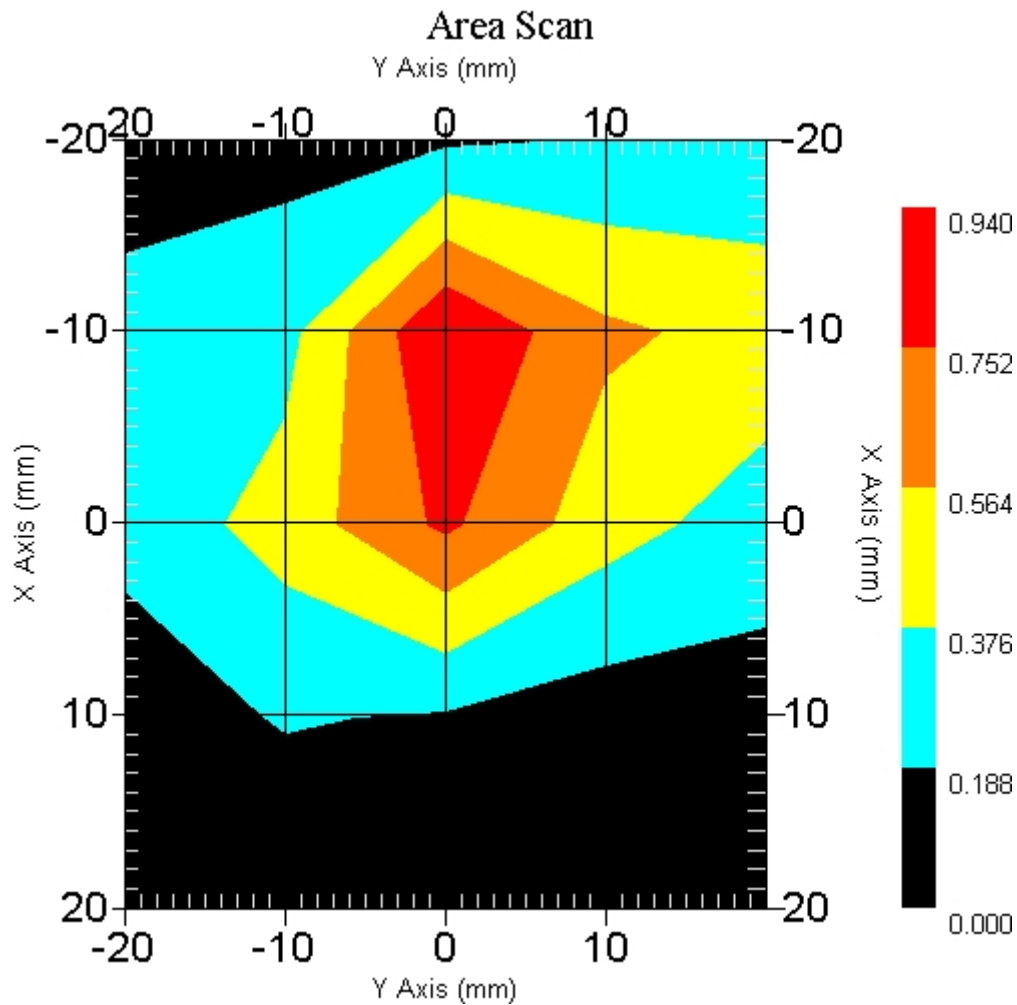
Name : Probe 215 - RFEL
Model : E020
Type : E-Field Triangle
Serial No. : 215
Last Calib. Date : 10-Jun-2005
Frequency : 2450.00 MHz
Duty Cycle Factor: 1
Conversion Factor: 4.6
Probe Sensitivity: 1.20 1.20 1.20 $\mu\text{V}/(\text{V}/\text{m})^2$
Compression Point: 95.00 mV
Offset : 1.56 mm

Measurement Data

Crest Factor : 1
 Scan Type : Complete
 Tissue Temp. : 20.00 °C
 Ambient Temp. : 22.00 °C
 Set-up Date : 09-Mar-2006
 Set-up Time : 12:20:11 PM
 Area Scan : 5x5x1 : Measurement x=10mm, y=10mm, z=4mm
 Zoom Scan : 5x5x8 : Measurement x=8mm, y=8mm, z=4mm

Other Data

DUT Position : End
 Separation : 0
 Channel : Mid - 6



1 gram SAR value : 0.759 W/kg
 10 gram SAR value : 0.335 W/kg
 Area Scan Peak SAR : 0.938 W/kg
 Zoom Scan Peak SAR : 1.701 W/kg

SAR Test Report

By Operator : Jay
Measurement Date : 09-Mar-2006
Starting Time : 09-Mar-2006 10:20:37 AM
End Time : 09-Mar-2006 10:33:30 AM
Scanning Time : 773 secs

Product Data

Device Name : Motion Computing
Serial No. : 20401001
Type : Other
Model : T004
Frequency : 2450.00 MHz
Max. Transmit Pwr : 0.065 W
Drift Time : 0 min(s)
Length : 295 mm
Width : 245 mm
Depth : 23 mm
Antenna Type : Internal - Main
Orientation : End
Power Drift-Start : 0.717 W/kg
Power Drift-Finish: 0.694 W/kg
Power Drift (%) : -3.208

Phantom Data

Name : APREL-Uni
Type : Uni-Phantom
Size (mm) : 280 x 280 x 200
Serial No. : System Default
Location : Center
Description : Uni-Phantom

Tissue Data

Type : BODY
Serial No. : 2450
Frequency : 2450.00 MHz
Last Calib. Date : 09-Mar-2006
Temperature : 20.00 °C
Ambient Temp. : 22.00 °C
Humidity : 44.00 RH%
Epsilon : 51.72 F/m
Sigma : 1.95 S/m
Density : 1000.00 kg/cu. m

Probe Data

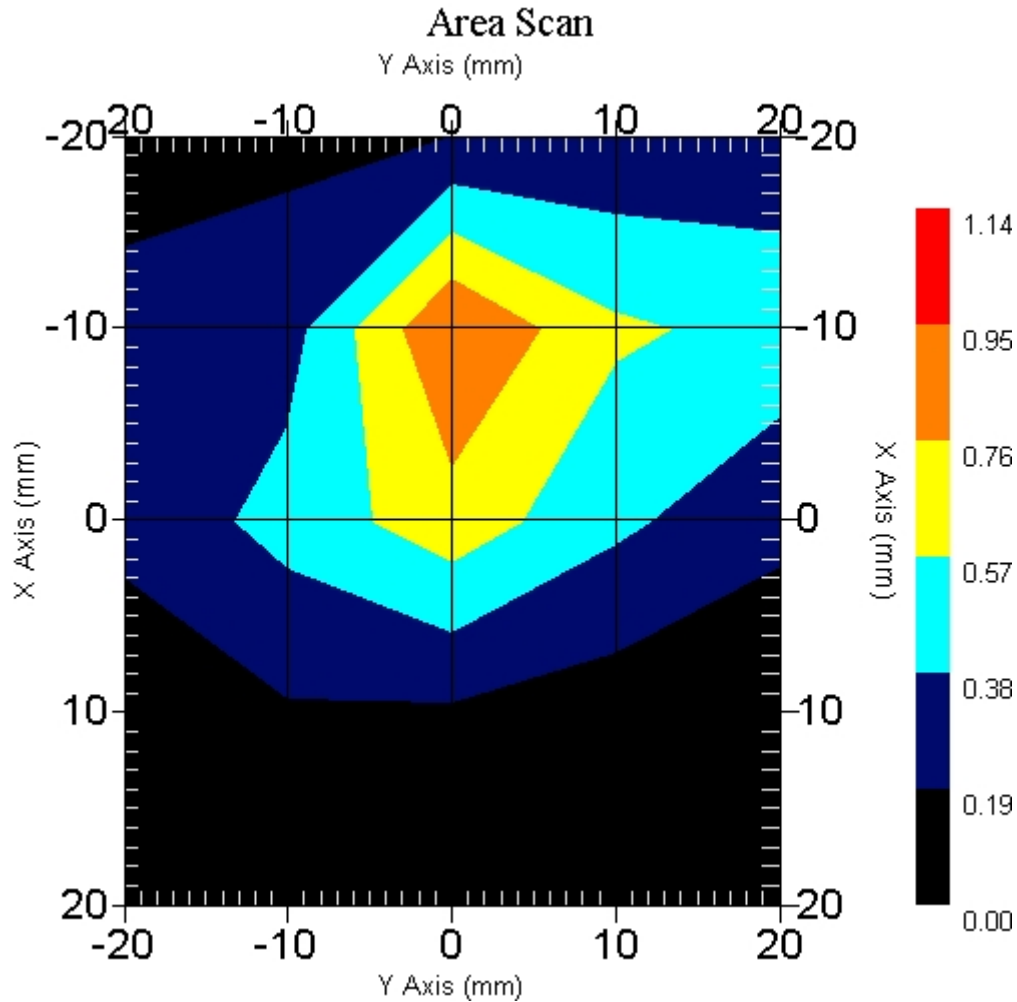
Name : Probe 215 - RFEL
Model : E020
Type : E-Field Triangle
Serial No. : 215
Last Calib. Date : 10-Jun-2005
Frequency : 2450.00 MHz
Duty Cycle Factor: 1
Conversion Factor: 4.6
Probe Sensitivity: 1.20 1.20 1.20 $\mu\text{V}/(\text{V}/\text{m})^2$
Compression Point: 95.00 mV
Offset : 1.56 mm

Measurement Data

Crest Factor : 1
 Scan Type : Complete
 Tissue Temp. : 20.00 °C
 Ambient Temp. : 22.00 °C
 Set-up Date : 09-Mar-2006
 Set-up Time : 12:20:11 PM
 Area Scan : 5x5x1 : Measurement x=10mm, y=10mm, z=4mm
 Zoom Scan : 5x5x8 : Measurement x=8mm, y=8mm, z=4mm

Other Data

DUT Position : End
 Separation : 0
 Channel : High - 11



1 gram SAR value : 0.726 W/kg
 10 gram SAR value : 0.317 W/kg
 Area Scan Peak SAR : 0.951 W/kg
 Zoom Scan Peak SAR : 1.671 W/kg

SAR Test Report

By Operator : Jay
Measurement Date : 09-Mar-2006
Starting Time : 09-Mar-2006 11:27:23 AM
End Time : 09-Mar-2006 11:47:57 AM
Scanning Time : 1234 secs

Product Data

Device Name : Motion Computing
Serial No. : 20401001
Type : Other
Model : T004
Frequency : 2450.00 MHz
Max. Transmit Pwr : 0.065 W
Drift Time : 0 min(s)
Length : 295 mm
Width : 245 mm
Depth : 23 mm
Antenna Type : Internal - Aux
Orientation : End
Power Drift-Start : 0.846 W/kg
Power Drift-Finish: 0.799 W/kg
Power Drift (%) : -5.556

Phantom Data

Name : APREL-Uni
Type : Uni-Phantom
Size (mm) : 280 x 280 x 200
Serial No. : System Default
Location : Center
Description : Uni-Phantom

Tissue Data

Type : BODY
Serial No. : 2450
Frequency : 2450.00 MHz
Last Calib. Date : 09-Mar-2006
Temperature : 20.00 °C
Ambient Temp. : 22.00 °C
Humidity : 44.00 RH%
Epsilon : 51.72 F/m
Sigma : 1.95 S/m
Density : 1000.00 kg/cu. m

Probe Data

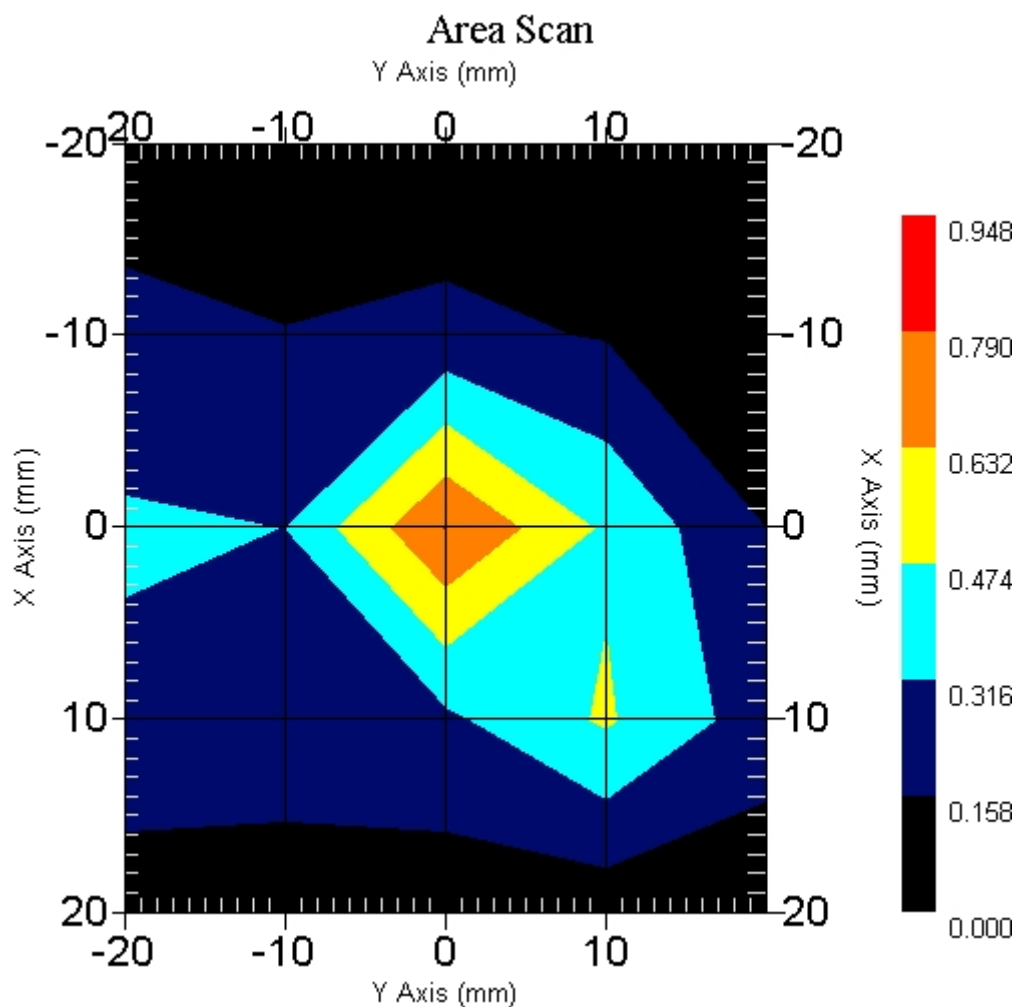
Name : Probe 215 - RFEL
Model : E020
Type : E-Field Triangle
Serial No. : 215
Last Calib. Date : 10-Jun-2005
Frequency : 2450.00 MHz
Duty Cycle Factor: 1
Conversion Factor: 4.6
Probe Sensitivity: 1.20 1.20 1.20 $\mu\text{V}/(\text{V}/\text{m})^2$
Compression Point: 95.00 mV
Offset : 1.56 mm

Measurement Data

Crest Factor : 1
 Scan Type : Complete
 Tissue Temp. : 20.00 °C
 Ambient Temp. : 22.00 °C
 Set-up Date : 09-Mar-2006
 Set-up Time : 12:20:11 PM
 Area Scan : 5x5x1 : Measurement x=10mm, y=10mm, z=4mm
 Zoom Scan : 5x5x8 : Measurement x=8mm, y=8mm, z=4mm

Other Data

DUT Position : End
 Separation : 0
 Channel : Low - 1



1 gram SAR value : 0.652 W/kg
 10 gram SAR value : 0.262 W/kg
 Area Scan Peak SAR : 0.791 W/kg
 Zoom Scan Peak SAR : 1.661 W/kg

SAR Test Report

By Operator : Jay
Measurement Date : 09-Mar-2006
Starting Time : 09-Mar-2006 11:54:56 AM
End Time : 09-Mar-2006 12:07:47 PM
Scanning Time : 771 secs

Product Data

Device Name : Motion Computing
Serial No. : 20401001
Type : Other
Model : T004
Frequency : 2450.00 MHz
Max. Transmit Pwr : 0.065 W
Drift Time : 0 min(s)
Length : 295 mm
Width : 245 mm
Depth : 23 mm
Antenna Type : Internal - Aux
Orientation : End
Power Drift-Start : 0.808 W/kg
Power Drift-Finish: 0.841 W/kg
Power Drift (%) : 4.084

Phantom Data

Name : APREL-Uni
Type : Uni-Phantom
Size (mm) : 280 x 280 x 200
Serial No. : System Default
Location : Center
Description : Uni-Phantom

Tissue Data

Type : BODY
Serial No. : 2450
Frequency : 2450.00 MHz
Last Calib. Date : 09-Mar-2006
Temperature : 20.00 °C
Ambient Temp. : 22.00 °C
Humidity : 44.00 RH%
Epsilon : 51.72 F/m
Sigma : 1.95 S/m
Density : 1000.00 kg/cu. m

Probe Data

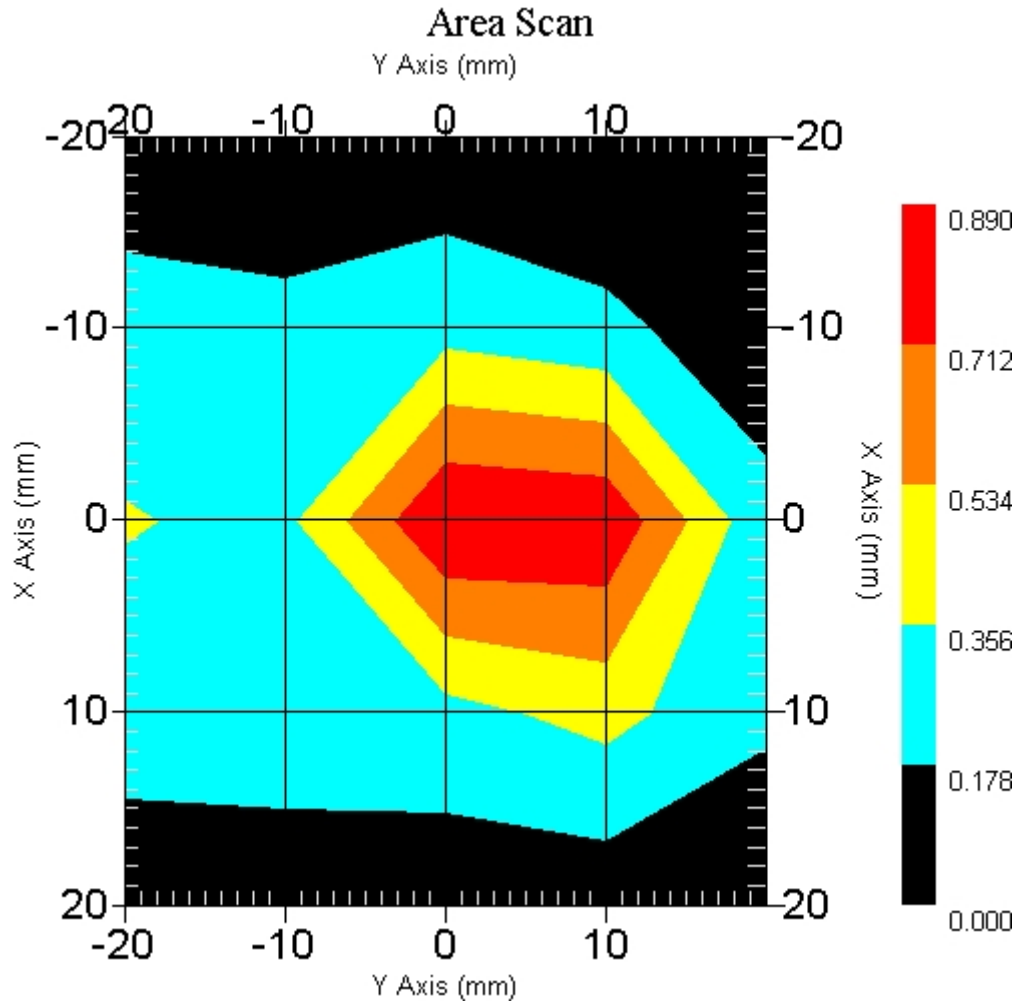
Name : Probe 215 - RFEL
Model : E020
Type : E-Field Triangle
Serial No. : 215
Last Calib. Date : 10-Jun-2005
Frequency : 2450.00 MHz
Duty Cycle Factor: 1
Conversion Factor: 4.6
Probe Sensitivity: 1.20 1.20 1.20 $\mu\text{V}/(\text{V}/\text{m})^2$
Compression Point: 95.00 mV
Offset : 1.56 mm

Measurement Data

Crest Factor : 1
 Scan Type : Complete
 Tissue Temp. : 20.00 °C
 Ambient Temp. : 22.00 °C
 Set-up Date : 09-Mar-2006
 Set-up Time : 12:20:11 PM
 Area Scan : 5x5x1 : Measurement x=10mm, y=10mm, z=4mm
 Zoom Scan : 5x5x8 : Measurement x=8mm, y=8mm, z=4mm

Other Data

DUT Position : End
 Separation : 0
 Channel : Mid - 6



1 gram SAR value : 0.785 W/kg
 10 gram SAR value : 0.299 W/kg
 Area Scan Peak SAR : 0.888 W/kg
 Zoom Scan Peak SAR : 2.101 W/kg

SAR Test Report

By Operator : Jay
Measurement Date : 09-Mar-2006
Starting Time : 09-Mar-2006 12:09:26 PM
End Time : 09-Mar-2006 12:22:28 PM
Scanning Time : 782 secs

Product Data

Device Name : Motion Computing
Serial No. : 20401001
Type : Other
Model : T004
Frequency : 2450.00 MHz
Max. Transmit Pwr : 0.065 W
Drift Time : 0 min(s)
Length : 295 mm
Width : 245 mm
Depth : 23 mm
Antenna Type : Internal - Aux
Orientation : End
Power Drift-Start : 0.911 W/kg
Power Drift-Finish: 0.869 W/kg
Power Drift (%) : -4.581

Phantom Data

Name : APREL-Uni
Type : Uni-Phantom
Size (mm) : 280 x 280 x 200
Serial No. : System Default
Location : Center
Description : Uni-Phantom

Tissue Data

Type : BODY
Serial No. : 2450
Frequency : 2450.00 MHz
Last Calib. Date : 09-Mar-2006
Temperature : 20.00 °C
Ambient Temp. : 22.00 °C
Humidity : 44.00 RH%
Epsilon : 51.72 F/m
Sigma : 1.95 S/m
Density : 1000.00 kg/cu. m

Probe Data

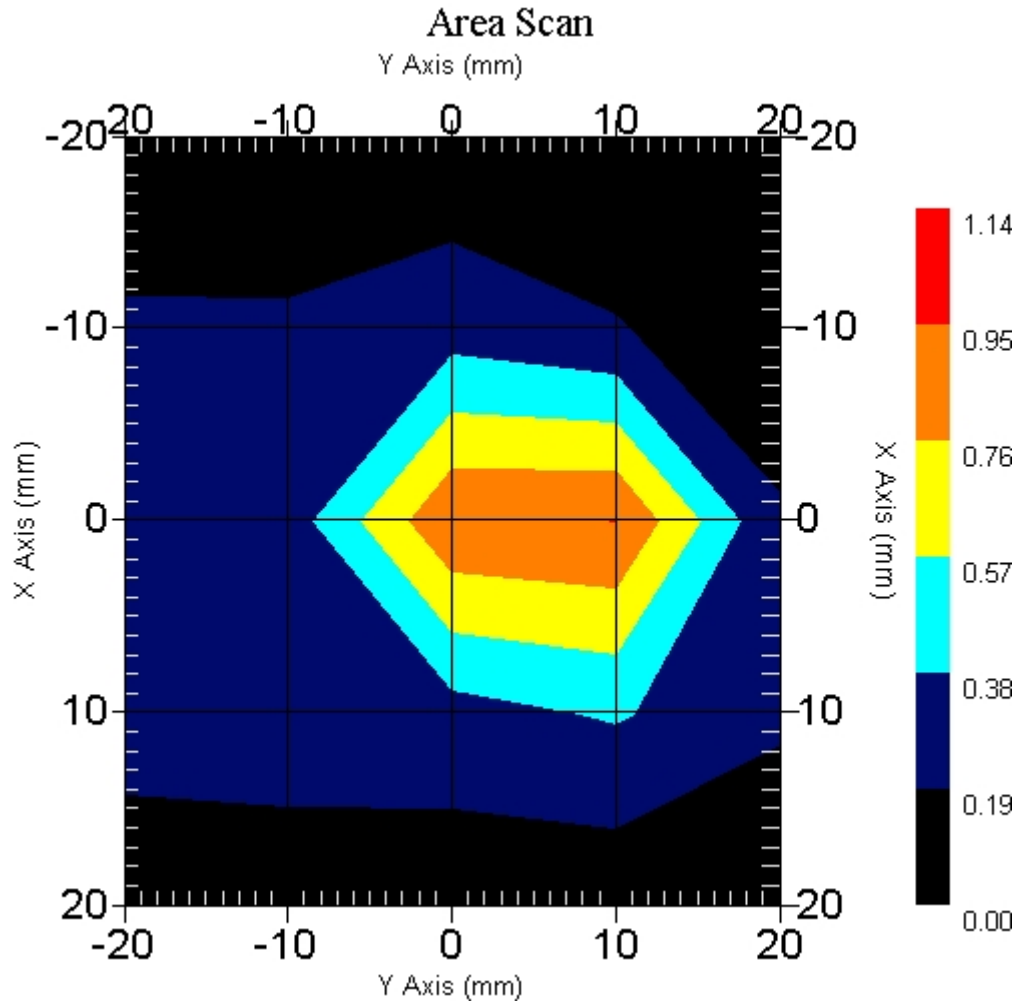
Name : Probe 215 - RFEL
Model : E020
Type : E-Field Triangle
Serial No. : 215
Last Calib. Date : 10-Jun-2005
Frequency : 2450.00 MHz
Duty Cycle Factor: 1
Conversion Factor: 4.6
Probe Sensitivity: 1.20 1.20 1.20 $\mu\text{V}/(\text{V}/\text{m})^2$
Compression Point: 95.00 mV
Offset : 1.56 mm

Measurement Data

Crest Factor : 1
 Scan Type : Complete
 Tissue Temp. : 20.00 °C
 Ambient Temp. : 22.00 °C
 Set-up Date : 09-Mar-2006
 Set-up Time : 12:20:11 PM
 Area Scan : 5x5x1 : Measurement x=10mm, y=10mm, z=4mm
 Zoom Scan : 5x5x8 : Measurement x=8mm, y=8mm, z=4mm

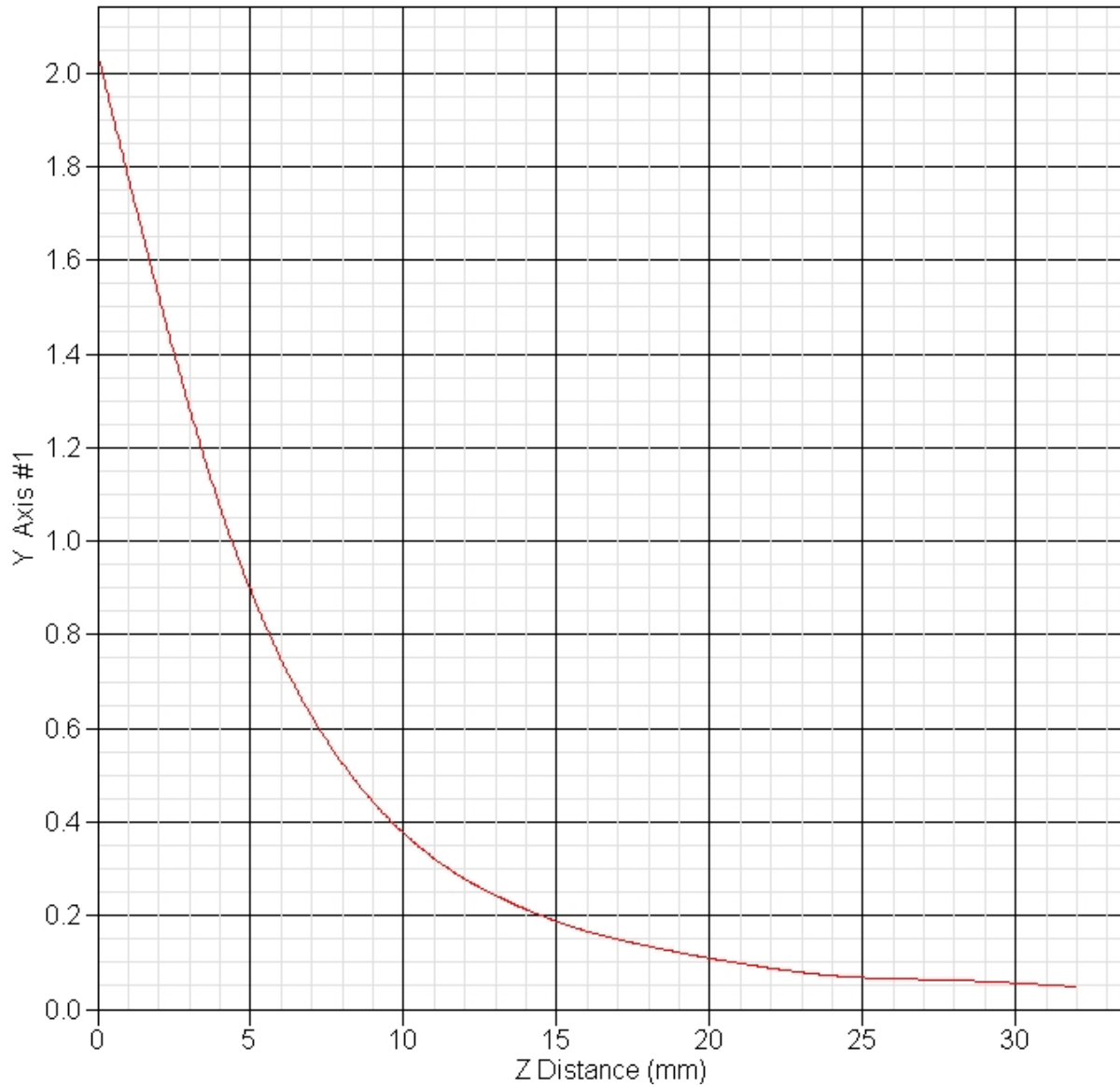
Other Data

DUT Position : End
 Separation : 0
 Channel : High - 11



1 gram SAR value : 0.799 W/kg
 10 gram SAR value : 0.314 W/kg
 Area Scan Peak SAR : 0.951 W/kg
 Zoom Scan Peak SAR : 2.041 W/kg

SAR-Z Axis
at Hotspot x:0.40 y:1.70



SAR Test Report

By Operator : Jay
Measurement Date : 08-Mar-2006
Starting Time : 08-Mar-2006 02:08:30 PM
End Time : 08-Mar-2006 02:21:27 PM
Scanning Time : 777 secs

Product Data

Device Name : Motion Computing
Serial No. : 20401001
Type : Other
Model : T004
Frequency : 2450.00 MHz
Max. Transmit Pwr : 0.065 W
Drift Time : 0 min(s)
Length : 295 mm
Width : 245 mm
Depth : 23 mm
Antenna Type : Internal - Main
Orientation : Back
Power Drift-Start : 0.488 W/kg
Power Drift-Finish: 0.514 W/kg
Power Drift (%) : 5.215

Phantom Data

Name : APREL-Uni
Type : Uni-Phantom
Size (mm) : 280 x 280 x 200
Serial No. : System Default
Location : Center
Description : Uni-Phantom

Tissue Data

Type : BODY
Serial No. : 2450
Frequency : 2450.00 MHz
Last Calib. Date : 08-Mar-2006
Temperature : 20.00 °C
Ambient Temp. : 22.00 °C
Humidity : 44.00 RH%
Epsilon : 51.39 F/m
Sigma : 1.90 S/m
Density : 1000.00 kg/cu. m

Probe Data

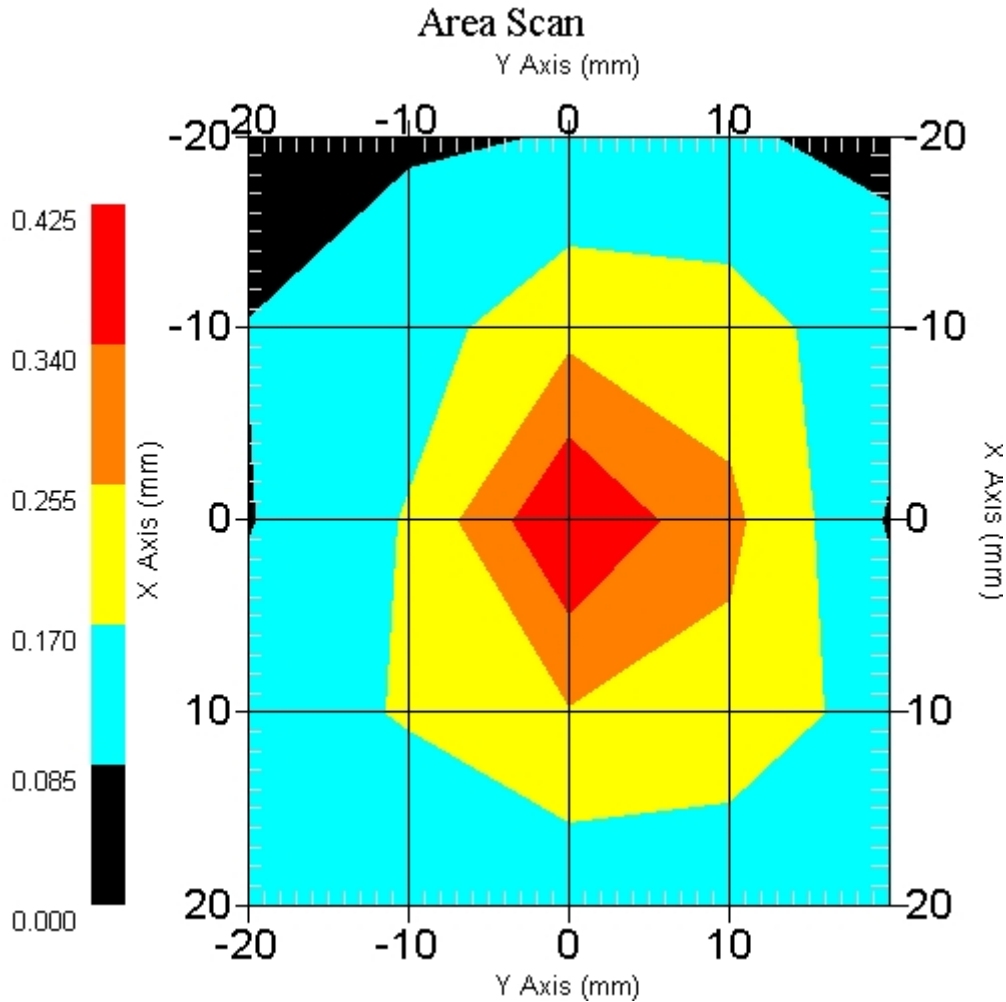
Name : Probe 215 - RFEL
Model : E020
Type : E-Field Triangle
Serial No. : 215
Last Calib. Date : 10-Jun-2005
Frequency : 2450.00 MHz
Duty Cycle Factor: 1
Conversion Factor: 4.6
Probe Sensitivity: 1.20 1.20 1.20 $\mu\text{V}/(\text{V}/\text{m})^2$
Compression Point: 95.00 mV
Offset : 1.56 mm

Measurement Data

Crest Factor : 1
 Scan Type : Complete
 Tissue Temp. : 20.00 °C
 Ambient Temp. : 22.00 °C
 Set-up Date : 08-Mar-2006
 Set-up Time : 12:20:11 PM
 Area Scan : 5x5x1 : Measurement x=10mm, y=10mm, z=4mm
 Zoom Scan : 5x5x8 : Measurement x=8mm, y=8mm, z=4mm

Other Data

DUT Position : Back
 Separation : 0
 Channel : Low - 1



1 gram SAR value : 0.332 W/kg
 10 gram SAR value : 0.171 W/kg
 Area Scan Peak SAR : 0.424 W/kg
 Zoom Scan Peak SAR : 0.680 W/kg

SAR Test Report

By Operator : Jay
Measurement Date : 08-Mar-2006
Starting Time : 08-Mar-2006 04:18:50 PM
End Time : 08-Mar-2006 04:32:02 PM
Scanning Time : 792 secs

Product Data

Device Name : Motion Computing
Serial No. : 20401001
Type : Other
Model : T004
Frequency : 2450.00 MHz
Max. Transmit Pwr : 0.065 W
Drift Time : 0 min(s)
Length : 295 mm
Width : 245 mm
Depth : 23 mm
Antenna Type : Internal - Aux
Orientation : Back
Power Drift-Start : 0.128 W/kg
Power Drift-Finish: 0.122 W/kg
Power Drift (%) : -4.688

Phantom Data

Name : APREL-Uni
Type : Uni-Phantom
Size (mm) : 280 x 280 x 200
Serial No. : System Default
Location : Center
Description : Uni-Phantom

Tissue Data

Type : BODY
Serial No. : 2450
Frequency : 2450.00 MHz
Last Calib. Date : 08-Mar-2006
Temperature : 20.00 °C
Ambient Temp. : 22.00 °C
Humidity : 44.00 RH%
Epsilon : 51.39 F/m
Sigma : 1.90 S/m
Density : 1000.00 kg/cu. m

Probe Data

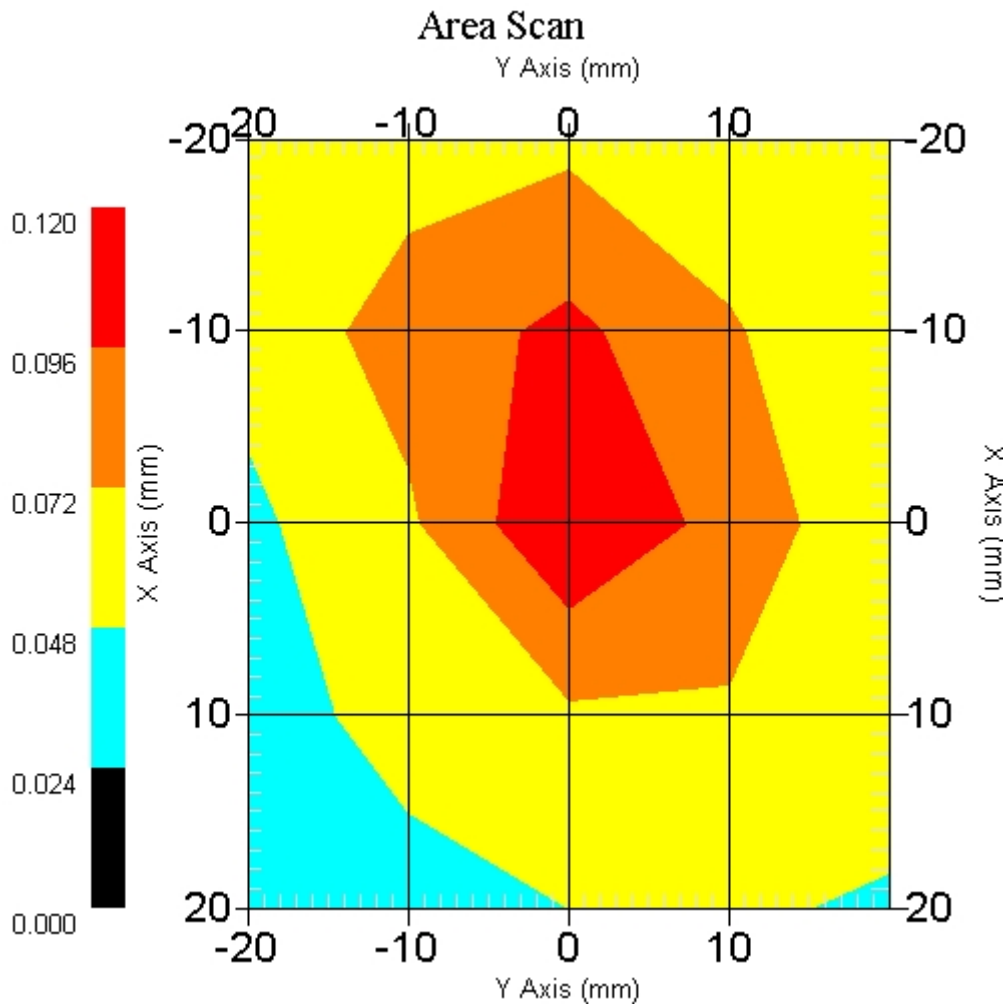
Name : Probe 215 - RFEL
Model : E020
Type : E-Field Triangle
Serial No. : 215
Last Calib. Date : 10-Jun-2005
Frequency : 2450.00 MHz
Duty Cycle Factor: 1
Conversion Factor: 4.6
Probe Sensitivity: 1.20 1.20 1.20 $\mu\text{V}/(\text{V}/\text{m})^2$
Compression Point: 95.00 mV
Offset : 1.56 mm

Measurement Data

Crest Factor : 1
 Scan Type : Complete
 Tissue Temp. : 20.00 °C
 Ambient Temp. : 22.00 °C
 Set-up Date : 08-Mar-2006
 Set-up Time : 12:20:11 PM
 Area Scan : 5x5x1 : Measurement x=10mm, y=10mm, z=4mm
 Zoom Scan : 5x5x8 : Measurement x=8mm, y=8mm, z=4mm

Other Data

DUT Position : Back
 Separation : 0
 Channel : High - 11



1 gram SAR value : 0.103 W/kg
 10 gram SAR value : 0.068 W/kg
 Area Scan Peak SAR : 0.118 W/kg
 Zoom Scan Peak SAR : 0.170 W/kg

SAR Test Report

By Operator : Jay
Measurement Date : 08-Mar-2006
Starting Time : 08-Mar-2006 05:17:52 PM
End Time : 08-Mar-2006 05:42:08 PM
Scanning Time : 1456 secs

Product Data

Device Name : Motion Computing
Serial No. : 20401001
Type : Other
Model : T004
Frequency : 2450.00 MHz
Max. Transmit Pwr : 0.065 W
Drift Time : 0 min(s)
Length : 295 mm
Width : 245 mm
Depth : 23 mm
Antenna Type : Internal - Main
Orientation : Front
Power Drift-Start : 0.065 W/kg
Power Drift-Finish: 0.064 W/kg
Power Drift (%) : -1.270

Phantom Data

Name : APREL-Uni
Type : Uni-Phantom
Size (mm) : 280 x 280 x 200
Serial No. : System Default
Location : Center
Description : Uni-Phantom

Tissue Data

Type : BODY
Serial No. : 2450
Frequency : 2450.00 MHz
Last Calib. Date : 08-Mar-2006
Temperature : 20.00 °C
Ambient Temp. : 22.00 °C
Humidity : 44.00 RH%
Epsilon : 51.39 F/m
Sigma : 1.90 S/m
Density : 1000.00 kg/cu. m

Probe Data

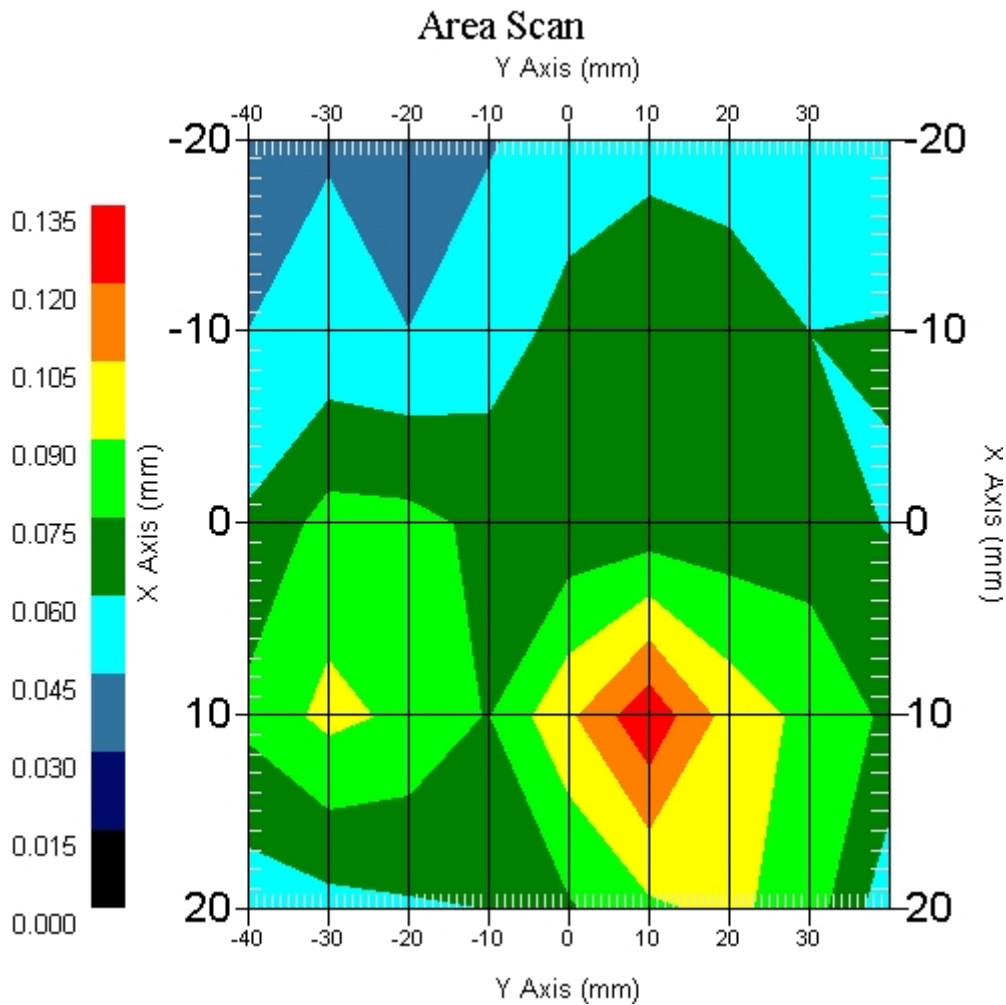
Name : Probe 215 - RFEL
Model : E020
Type : E-Field Triangle
Serial No. : 215
Last Calib. Date : 10-Jun-2005
Frequency : 2450.00 MHz
Duty Cycle Factor: 1
Conversion Factor: 4.6
Probe Sensitivity: 1.20 1.20 1.20 $\mu\text{V}/(\text{V}/\text{m})^2$
Compression Point: 95.00 mV
Offset : 1.56 mm

Measurement Data

Crest Factor : 1
 Scan Type : Complete
 Tissue Temp. : 20.00 °C
 Ambient Temp. : 22.00 °C
 Set-up Date : 08-Mar-2006
 Set-up Time : 12:20:11 PM
 Area Scan : 5x9x1 : Measurement x=10mm, y=10mm, z=4mm
 Zoom Scan : 5x5x8 : Measurement x=8mm, y=8mm, z=4mm

Other Data

DUT Position : Front
 Separation : 0
 Channel : Mid - 6



1 gram SAR value : 0.098 W/kg
 10 gram SAR value : 0.066 W/kg
 Area Scan Peak SAR : 0.131 W/kg
 Zoom Scan Peak SAR : 0.160 W/kg

SAR Test Report

By Operator : Jay
Measurement Date : 08-Mar-2006
Starting Time : 08-Mar-2006 07:12:49 PM
End Time : 08-Mar-2006 07:25:31 PM
Scanning Time : 762 secs

Product Data

Device Name : Motion Computing
Serial No. : 20401001
Type : Other
Model : T004
Frequency : 2450.00 MHz
Max. Transmit Pwr : 0.065 W
Drift Time : 0 min(s)
Length : 295 mm
Width : 245 mm
Depth : 23 mm
Antenna Type : Internal - Aux
Orientation : Front
Power Drift-Start : 0.158 W/kg
Power Drift-Finish: 0.163 W/kg
Power Drift (%) : 3.084

Phantom Data

Name : APREL-Uni
Type : Uni-Phantom
Size (mm) : 280 x 280 x 200
Serial No. : System Default
Location : Center
Description : Uni-Phantom

Tissue Data

Type : BODY
Serial No. : 2450
Frequency : 2450.00 MHz
Last Calib. Date : 08-Mar-2006
Temperature : 20.00 °C
Ambient Temp. : 22.00 °C
Humidity : 44.00 RH%
Epsilon : 51.39 F/m
Sigma : 1.90 S/m
Density : 1000.00 kg/cu. m

Probe Data

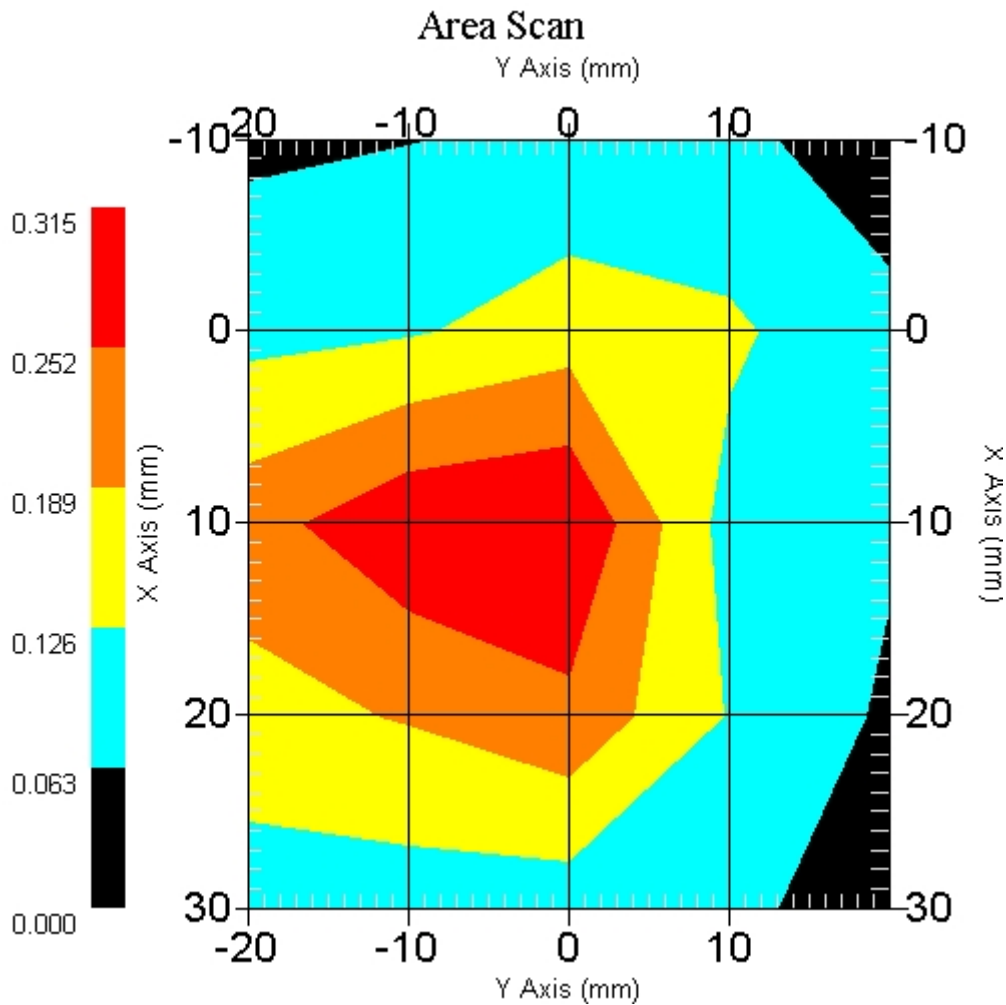
Name : Probe 215 - RFEL
Model : E020
Type : E-Field Triangle
Serial No. : 215
Last Calib. Date : 10-Jun-2005
Frequency : 2450.00 MHz
Duty Cycle Factor: 1
Conversion Factor: 4.6
Probe Sensitivity: 1.20 1.20 1.20 $\mu\text{V}/(\text{V}/\text{m})^2$
Compression Point: 95.00 mV
Offset : 1.56 mm

Measurement Data

Crest Factor : 1
 Scan Type : Complete
 Tissue Temp. : 20.00 °C
 Ambient Temp. : 22.00 °C
 Set-up Date : 08-Mar-2006
 Set-up Time : 12:20:11 PM
 Area Scan : 5x5x1 : Measurement x=10mm, y=10mm, z=4mm
 Zoom Scan : 5x5x8 : Measurement x=8mm, y=8mm, z=4mm

Other Data

DUT Position : Front
 Separation : 0
 Channel : High - 11



1 gram SAR value : 0.294 W/kg
 10 gram SAR value : 0.148 W/kg
 Area Scan Peak SAR : 0.314 W/kg
 Zoom Scan Peak SAR : 0.620 W/kg