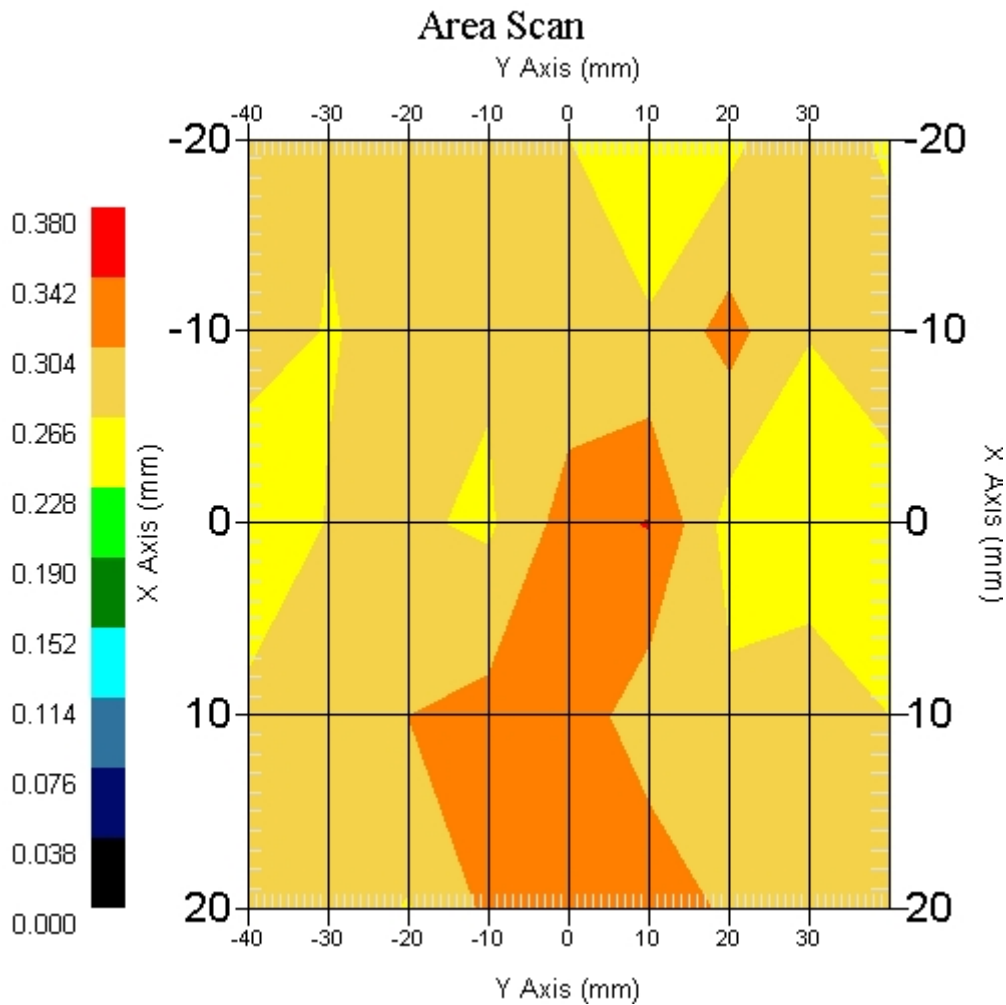


Measurement Data

Crest Factor : 1
 Scan Type : Complete
 Tissue Temp. : 20.00 °C
 Ambient Temp. : 22.00 °C
 Set-up Date : 11-Mar-2006
 Set-up Time : 11:28:42 AM
 Area Scan : 5x9x1 : Measurement x=10mm, y=10mm, z=4mm
 Zoom Scan : 5x5x8 : Measurement x=8mm, y=8mm, z=4mm

Other Data

DUT Position : Front
 Separation : 0
 Channel : Low - 149



1 gram SAR value : 0.336 W/kg
 10 gram SAR value : 0.287 W/kg
 Area Scan Peak SAR : 0.344 W/kg
 Zoom Scan Peak SAR : 0.480 W/kg

SAR Test Report

By Operator : Jay
Measurement Date : 11-Mar-2006
Starting Time : 11-Mar-2006 04:53:04 PM
End Time : 11-Mar-2006 05:05:57 PM
Scanning Time : 773 secs

Product Data

Device Name : Motion Computing
Serial No. : 20401001
Type : Other
Model : T004
Frequency : 5800.00 MHz
Max. Transmit Pwr : 0.025 W
Drift Time : 0 min(s)
Length : 295 mm
Width : 245 mm
Depth : 23 mm
Antenna Type : Internal - Aux
Orientation : Front
Power Drift-Start : 0.303 W/kg
Power Drift-Finish: 0.294 W/kg
Power Drift (%) : -2.970

Phantom Data

Name : APREL-Uni
Type : Uni-Phantom
Size (mm) : 280 x 280 x 200
Serial No. : System Default
Location : Center
Description : Uni-Phantom

Tissue Data

Type : BODY
Serial No. : 5800
Frequency : 5765.00 MHz
Last Calib. Date : 11-Mar-2006
Temperature : 20.00 °C
Ambient Temp. : 22.00 °C
Humidity : 43.00 RH%
Epsilon : 48.23 F/m
Sigma : 5.91 S/m
Density : 1000.00 kg/cu. m

Probe Data

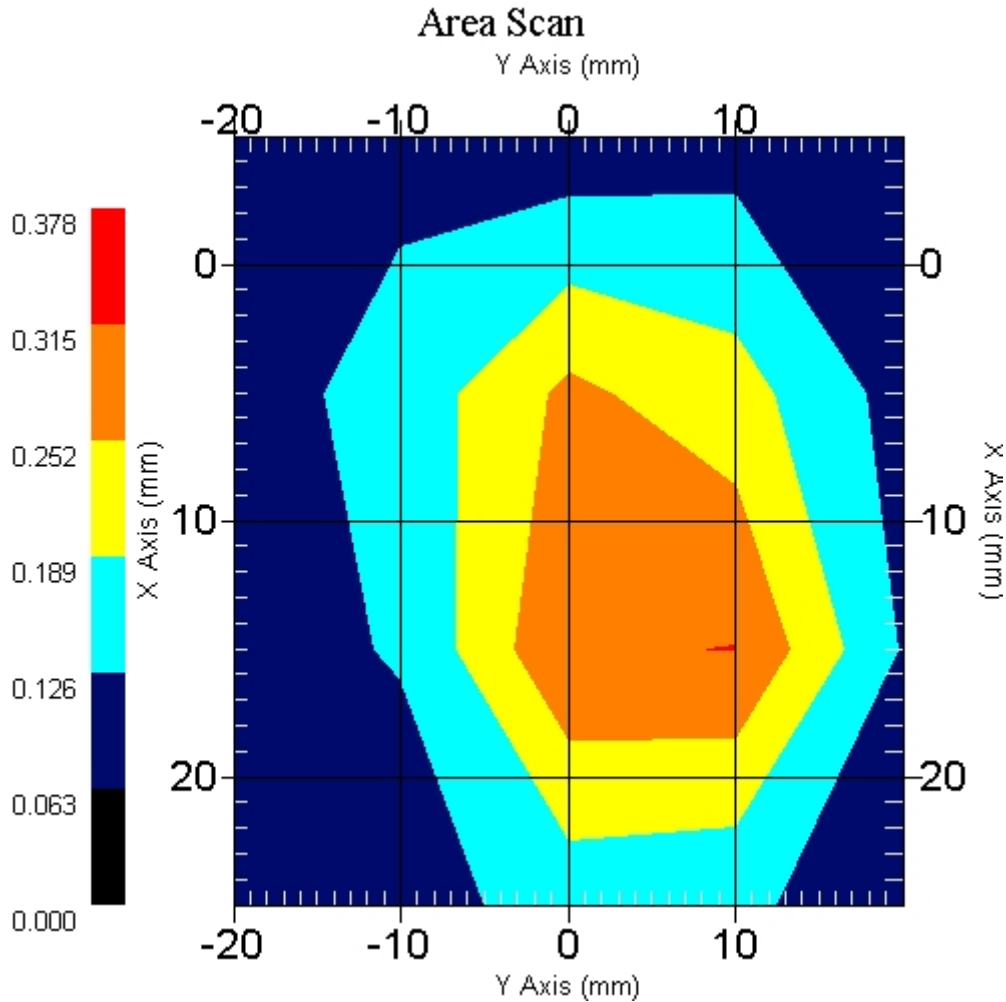
Name : Probe 215 - RFEL
Model : E020
Type : E-Field Triangle
Serial No. : 215
Last Calib. Date : 10-Jun-2005
Frequency : 5800 MHz
Duty Cycle Factor: 1
Conversion Factor: 2.1
Probe Sensitivity: 1.20 1.20 1.20 $\mu\text{V}/(\text{V}/\text{m})^2$
Compression Point: 95 mV
Offset : 1.56 mm

Measurement Data

Crest Factor : 1
 Scan Type : Complete
 Tissue Temp. : 20.00 °C
 Ambient Temp. : 22.00 °C
 Set-up Date : 11-Mar-2006
 Set-up Time : 8:34:09 AM
 Area Scan : 5x5x1 : Measurement x=10mm, y=10mm, z=4mm
 Zoom Scan : 5x5x8 : Measurement x=8mm, y=8mm, z=4mm

Other Data

DUT Position : Front
 Separation : 0
 Channel : Low - 149



1 gram SAR value : 0.252 W/kg
 10 gram SAR value : 0.135 W/kg
 Area Scan Peak SAR : 0.316 W/kg
 Zoom Scan Peak SAR : 0.700 W/kg

SAR Test Report

By Operator : Jay
Measurement Date : 11-Mar-2006
Starting Time : 11-Mar-2006 10:53:04 AM
End Time : 11-Mar-2006 11:05:57 AM
Scanning Time : 773 secs

Product Data

Device Name : Motion Computing
Serial No. : 20401001
Type : Other
Model : T004
Frequency : 5800.00 MHz
Max. Transmit Pwr : 0.025 W
Drift Time : 0 min(s)
Length : 295 mm
Width : 245 mm
Depth : 23 mm
Antenna Type : Internal - Main
Orientation : Side
Power Drift-Start : 1.889 W/kg
Power Drift-Finish: 1.846 W/kg
Power Drift (%) : -2.296

Phantom Data

Name : APREL-Uni
Type : Uni-Phantom
Size (mm) : 280 x 280 x 200
Serial No. : System Default
Location : Center
Description : Uni-Phantom

Tissue Data

Type : BODY
Serial No. : 5800
Frequency : 5765.00 MHz
Last Calib. Date : 11-Mar-2006
Temperature : 20.00 °C
Ambient Temp. : 22.00 °C
Humidity : 43.00 RH%
Epsilon : 48.23 F/m
Sigma : 5.91 S/m
Density : 1000.00 kg/cu. m

Probe Data

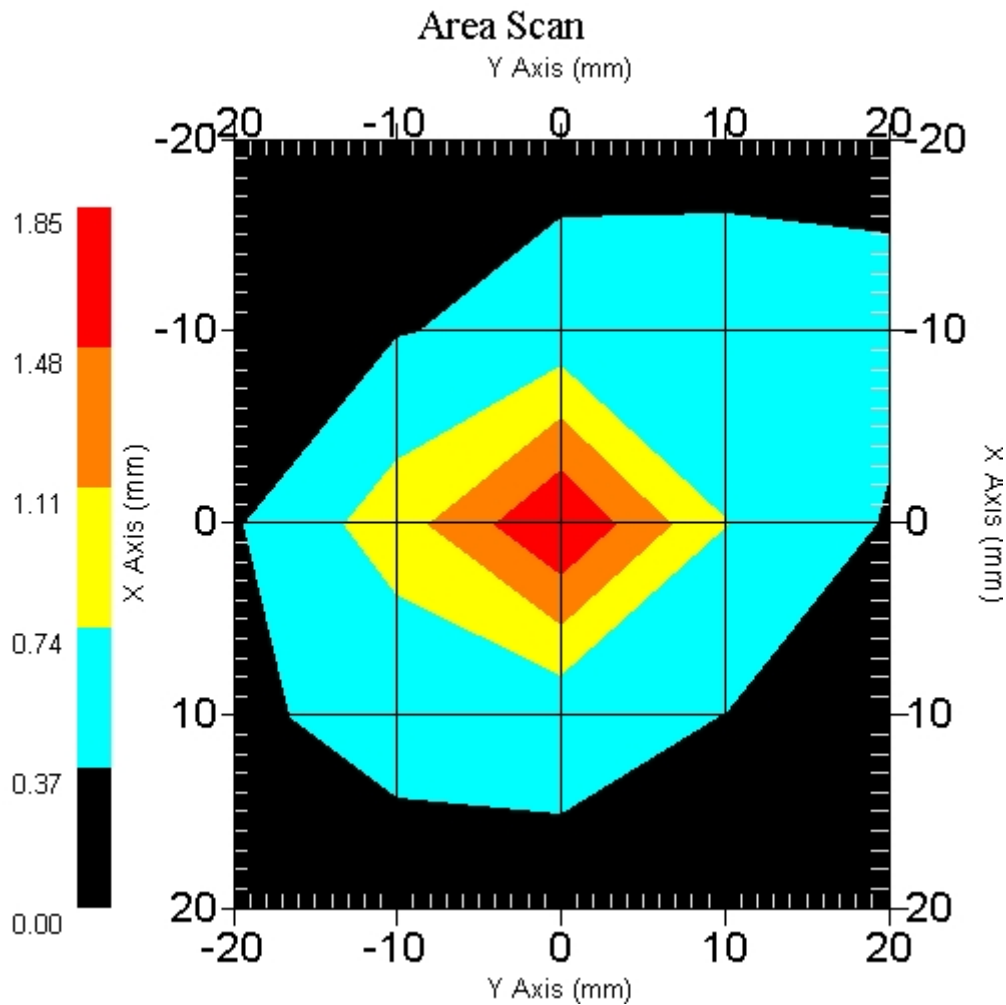
Name : Probe 215 - RFEL
Model : E020
Type : E-Field Triangle
Serial No. : 215
Last Calib. Date : 10-Jun-2005
Frequency : 5800.00 MHz
Duty Cycle Factor: 1
Conversion Factor: 2.1
Probe Sensitivity: 1.20 1.20 1.20 $\mu\text{V}/(\text{V}/\text{m})^2$
Compression Point: 95.00 mV
Offset : 1.56 mm

Measurement Data

Crest Factor : 1
 Scan Type : Complete
 Tissue Temp. : 20.00 °C
 Ambient Temp. : 22.00 °C
 Set-up Date : 11-Mar-2006
 Set-up Time : 8:34:09 AM
 Area Scan : 5x5x1 : Measurement x=10mm, y=10mm, z=4mm
 Zoom Scan : 5x5x8 : Measurement x=8mm, y=8mm, z=4mm

Other Data

DUT Position : Side
 Separation : 0
 Channel : Low - 149



1 gram SAR value : 1.344 W/kg
 10 gram SAR value : 0.559 W/kg
 Area Scan Peak SAR : 1.848 W/kg
 Zoom Scan Peak SAR : 4.263 W/kg

SAR Test Report

By Operator : Jay
Measurement Date : 11-Mar-2006
Starting Time : 11-Mar-2006 10:37:52 AM
End Time : 11-Mar-2006 10:50:41 AM
Scanning Time : 769 secs

Product Data

Device Name : Motion Computing
Serial No. : 20401001
Type : Other
Model : T004
Frequency : 5800.00 MHz
Max. Transmit Pwr : 0.025 W
Drift Time : 0 min(s)
Length : 295 mm
Width : 245 mm
Depth : 23 mm
Antenna Type : Internal - Aux
Orientation : End
Power Drift-Start : 2.187 W/kg
Power Drift-Finish: 2.122 W/kg
Power Drift (%) : -2.964

Phantom Data

Name : APREL-Uni
Type : Uni-Phantom
Size (mm) : 280 x 280 x 200
Serial No. : System Default
Location : Center
Description : Uni-Phantom

Tissue Data

Type : BODY
Serial No. : 5800
Frequency : 5765.00 MHz
Last Calib. Date : 11-Mar-2006
Temperature : 20.00 °C
Ambient Temp. : 22.00 °C
Humidity : 43.00 RH%
Epsilon : 48.23 F/m
Sigma : 5.91 S/m
Density : 1000.00 kg/cu. m

Probe Data

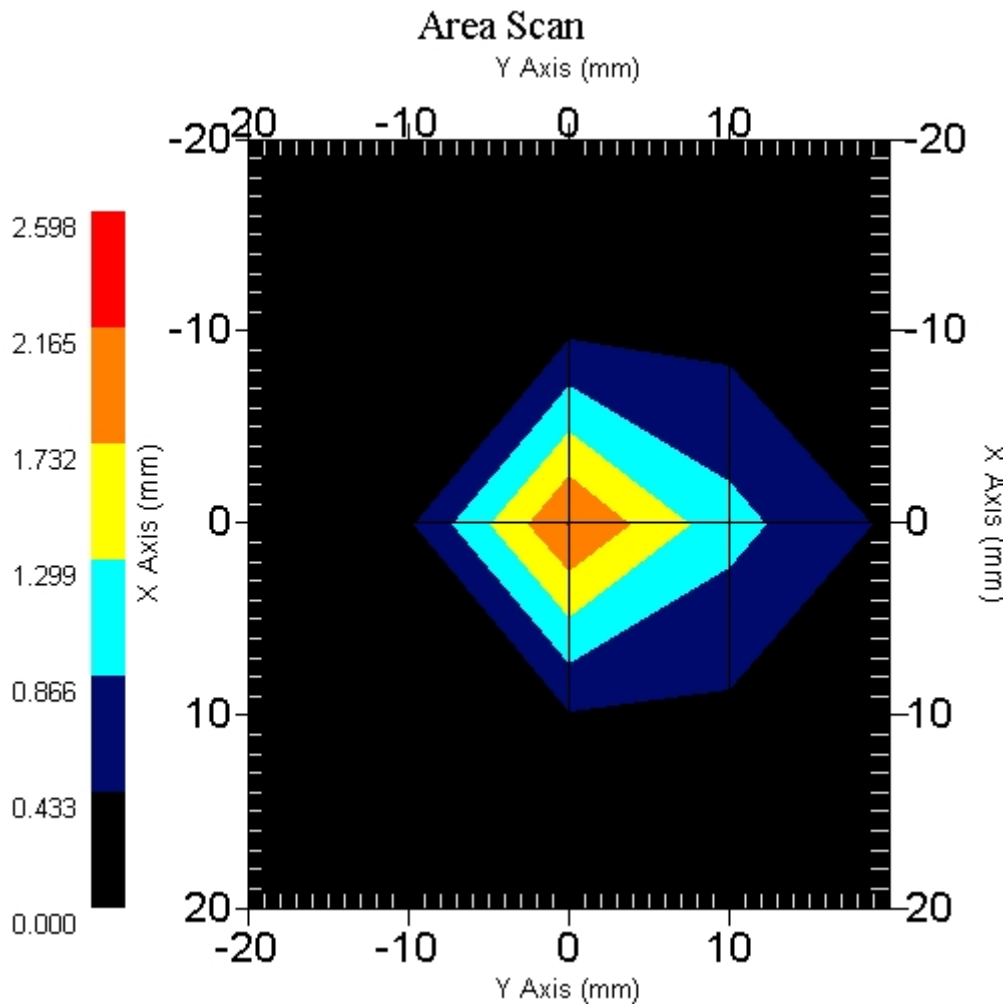
Name : Probe 215 - RFEL
Model : E020
Type : E-Field Triangle
Serial No. : 215
Last Calib. Date : 10-Jun-2005
Frequency : 5800.00 MHz
Duty Cycle Factor: 1
Conversion Factor: 2.1
Probe Sensitivity: 1.20 1.20 1.20 $\mu\text{V}/(\text{V}/\text{m})^2$
Compression Point: 95.00 mV
Offset : 1.56 mm

Measurement Data

Crest Factor : 1
Scan Type : Complete
Tissue Temp. : 20.00 °C
Ambient Temp. : 22.00 °C
Set-up Date : 11-Mar-2006
Set-up Time : 8:34:09 AM
Area Scan : 5x5x1 : Measurement x=10mm, y=10mm, z=4mm
Zoom Scan : 5x5x8 : Measurement x=8mm, y=8mm, z=4mm

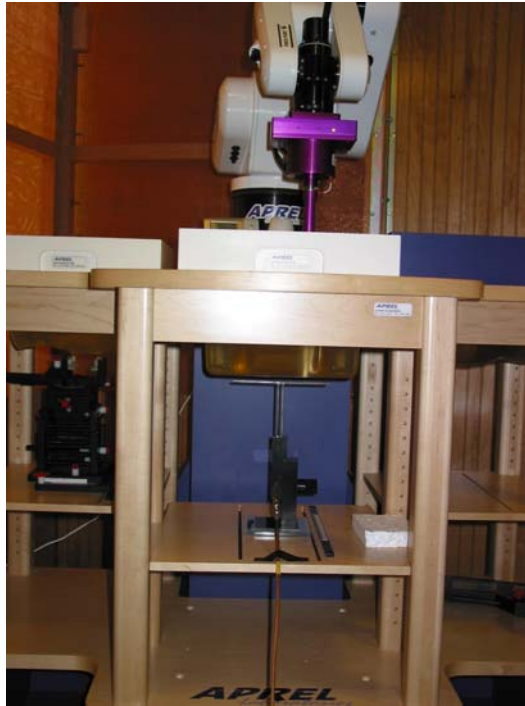
Other Data

DUT Position : End
Separation : 0
Channel : Low - 149

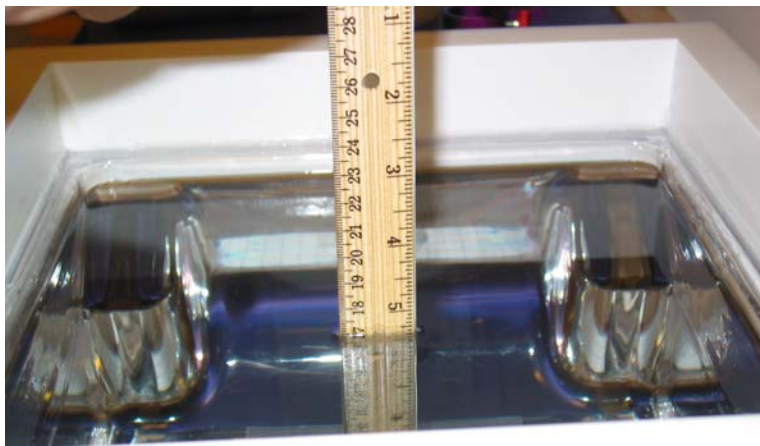


1 gram SAR value : 1.555 W/kg
10 gram SAR value : 0.568 W/kg
Area Scan Peak SAR : 2.167 W/kg
Zoom Scan Peak SAR : 5.564 W/kg

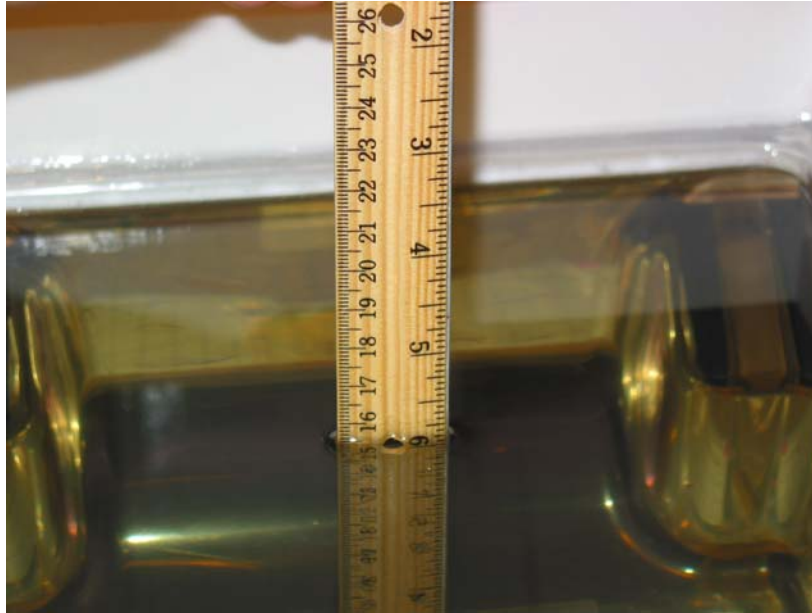
Appendix C – SAR Test Setup Photos



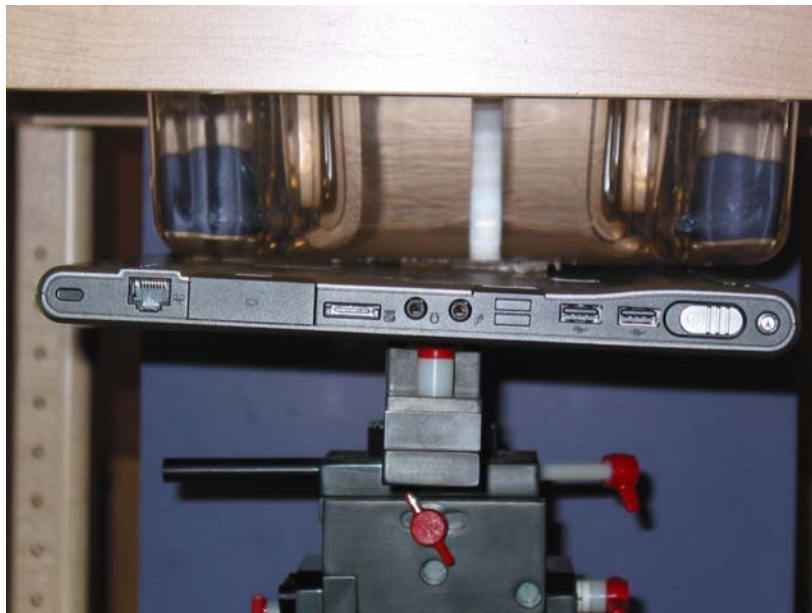
System Body Configuration



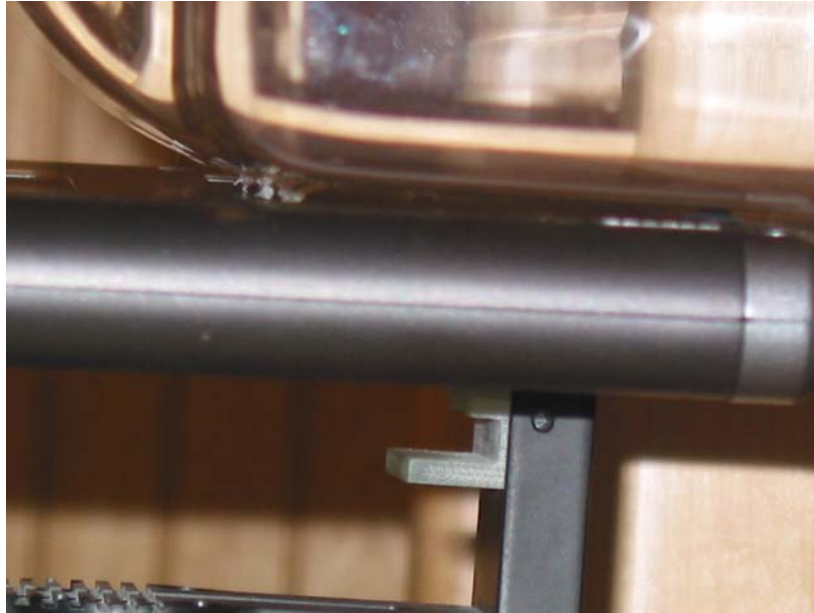
Glycol Body Tissue Depth



Sugar Body Tissue Depth



Main Antenna Back Test Position Front View



Main Antenna Back Test Position Side View



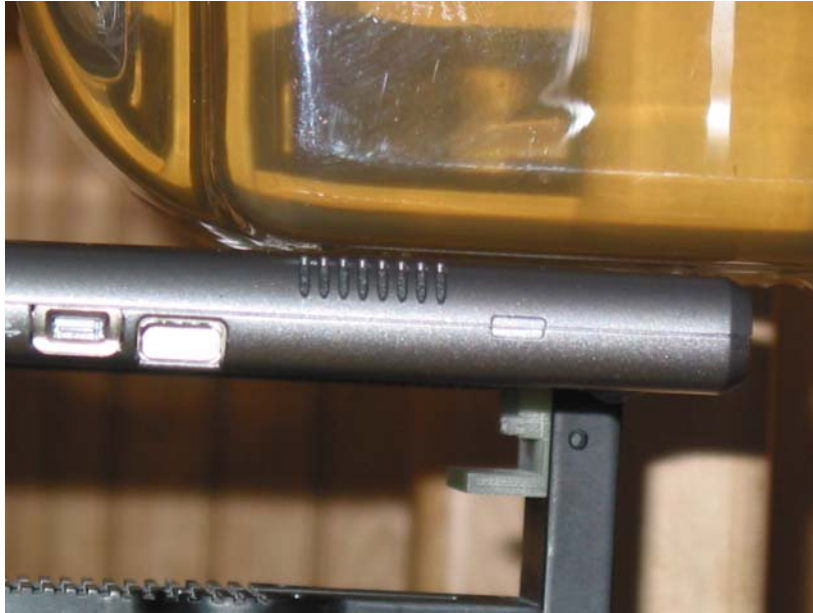
Aux Antenna Back Test Position Front View



Aux Antenna Back Test Position Side View



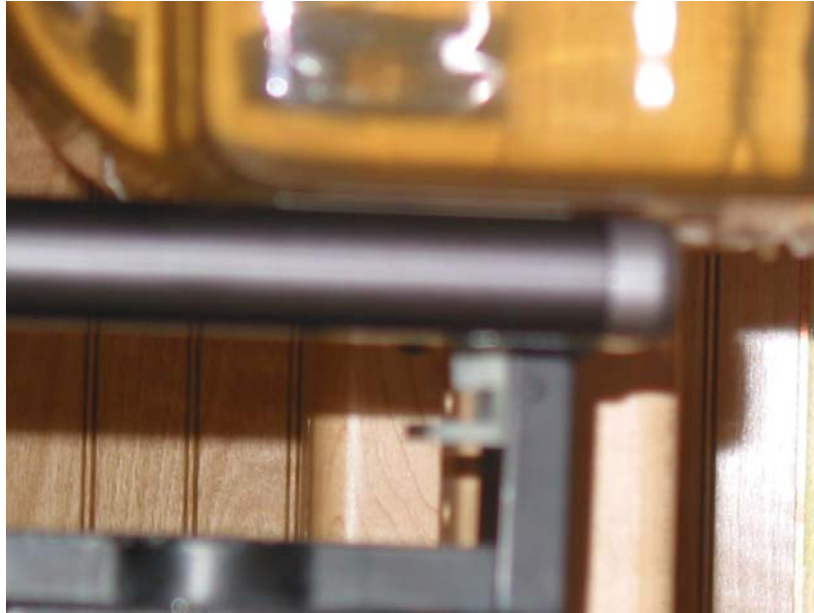
Main Antenna Front Test Position Front View



Main Antenna Front Test Position Side View



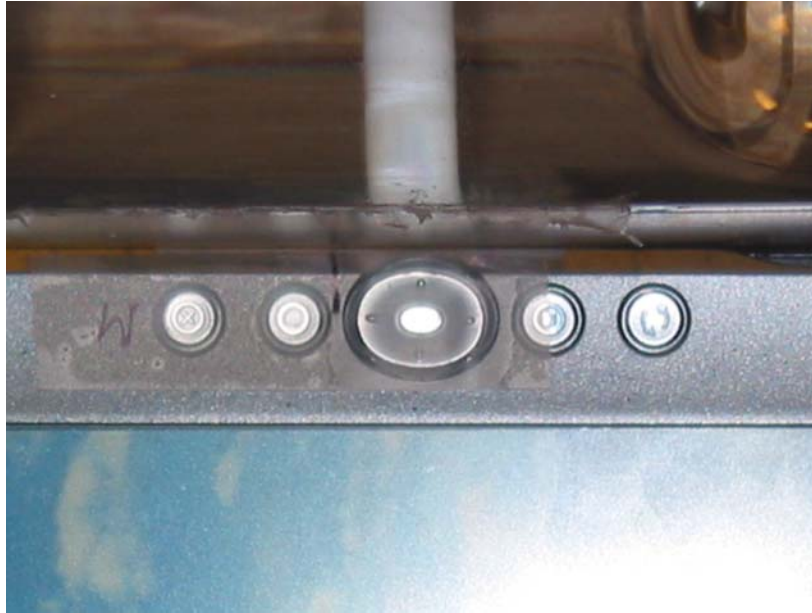
Aux Antenna Front Test Position Front View



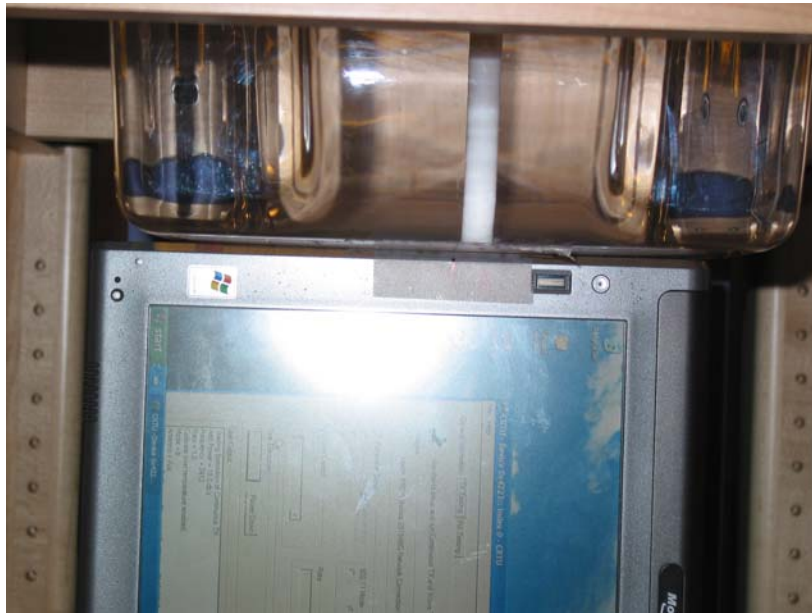
Aux Antenna Front Test Position Side View



Main Antenna End Test Position Front View



Main Antenna End Test Position Close-up View



Aux Antenna End Test Position Front View



Aux Antenna End Test Position Close-up View



Device Front View



Device Back View



Radio Card



Battery Top View



Battery Inside View

Appendix D – Probe Calibration Data Sheets

NCL CALIBRATION LABORATORIES

Calibration File No.: CP-606

Client.: RFEL

CERTIFICATE OF CALIBRATION

It is certified that the equipment identified below has been calibrated in the
NCL CALIBRATION LABORATORIES by qualified personnel following recognized
procedures and using transfer standards traceable to NRC/NIST.

Equipment: Miniature Isotropic RF Probe 2450 MHz

Manufacturer: APREL Laboratories

Model No.: E-020

Serial No.: 215

Calibration Procedure: SSI/DRB-TP-D01-032-E020-V2

Project No: RFEL-Probe-215-Calibration-5166

BODY Calibration

Calibrated: 10th June 2005
Released on: 10th June 2005

This Calibration Certificate is Incomplete Unless Accompanied with the Calibration Results Summary

Released By: _____ Signature On File

NCL CALIBRATION LABORATORIES

51 SPECTRUM WAY
NEPEAN, ONTARIO
CANADA K2R 1E6

Division of APREL Lab.
TEL: (613) 820-4988
FAX: (613) 820-4161

Introduction

This Calibration Report reproduces the results of the calibration performed in line with the SSI/DRB-TP-D01-032-E020-V2 E-Field Probe Calibration Procedure. The results contained within this report are for APREL E-Field Probe E-020 215.

References

SSI/DRB-TP-D01-032-E020-V2 E-Field Probe Calibration Procedure
IEEE 1528 “Recommended Practice for Determining the Peak Spatial-Average Specific Absorption Rate (SAR) in the Human Body Due to Wireless Communications Devices: Experimental Techniques”
SSI-TP-011 Tissue Calibration Procedure

Conditions

Probe 215 was a new probe taken from stock prior to calibration.

Ambient Temperature of the Laboratory: 22 °C +/- 0.5°C

Temperature of the Tissue: 21 °C +/- 0.5°C

We the undersigned attest that to the best of our knowledge the calibration of this probe has been accurately conducted and that all information contained within this report has been reviewed for accuracy.

Stuart Nicol
Director Product Development

Janusz Lokaj
Member of Engineering Staff
(Calibration Engineer)

Calibration Results Summary

Probe Type:	E-Field Probe E-020
Serial Number:	215
Frequency:	2450 MHz
Sensor Offset:	1.56 mm
Sensor Length:	2.5 mm
Tip Enclosure:	Ertalyte*
Tip Diameter:	<5 mm
Tip Length:	60 mm
Total Length:	290 mm

*Resistive to recommended tissue recipes per IEEE-1528

Sensitivity in Air

Channel X:	$1.2 \mu\text{V}/(\text{V}/\text{m})^2$
Channel Y:	$1.2 \mu\text{V}/(\text{V}/\text{m})^2$
Channel Z:	$1.2 \mu\text{V}/(\text{V}/\text{m})^2$
Diode Compression Point:	95 mV

Sensitivity in Body Tissue

Frequency: 2450 MHz

Epsilon: 39.2 (+/-5%) **Sigma:** 1.80 S/m (+/-10%)

ConvF

Channel X: 4.6

Channel Y: 4.6

Channel Z: 4.6

Tissue sensitivity values were calculated using the load impedance of the APREL Laboratories Daq-Paq.

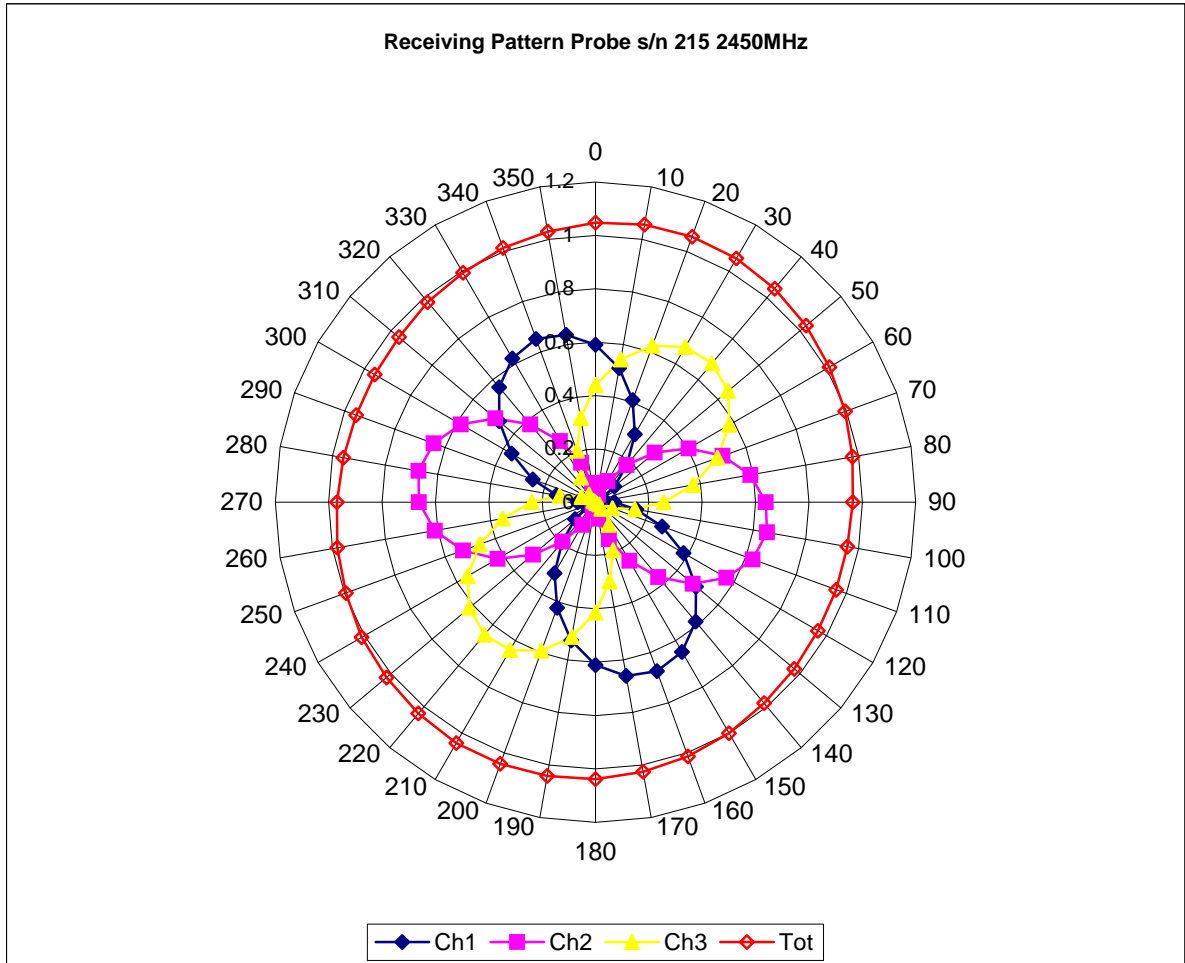
Boundary Effect:

Uncertainty resulting from the boundary effect is less than 2% for the distance between the tip of the probe and the tissue boundary, when less than 2.44mm.

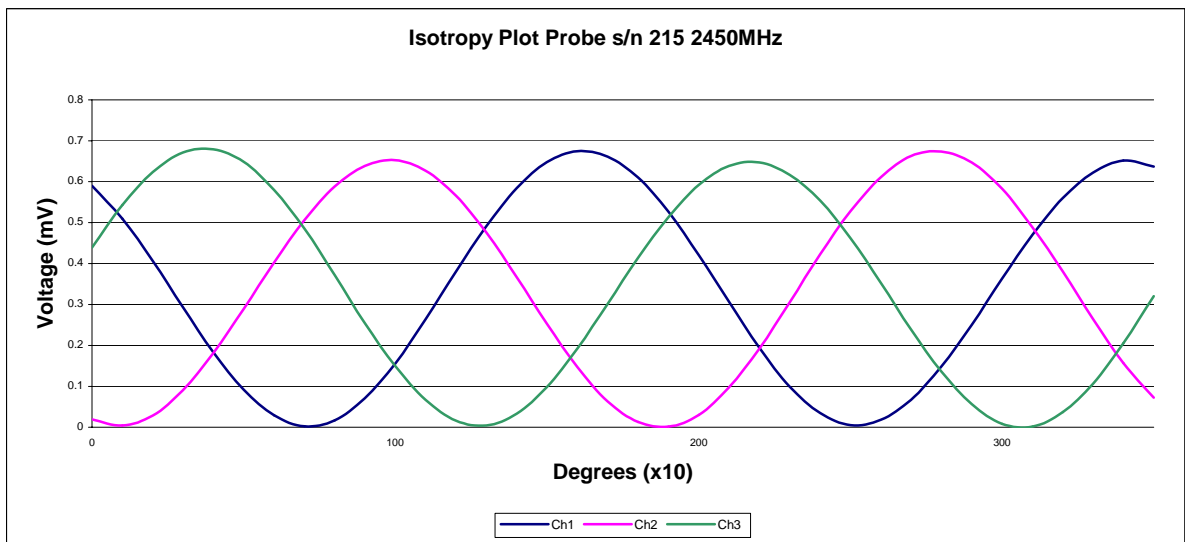
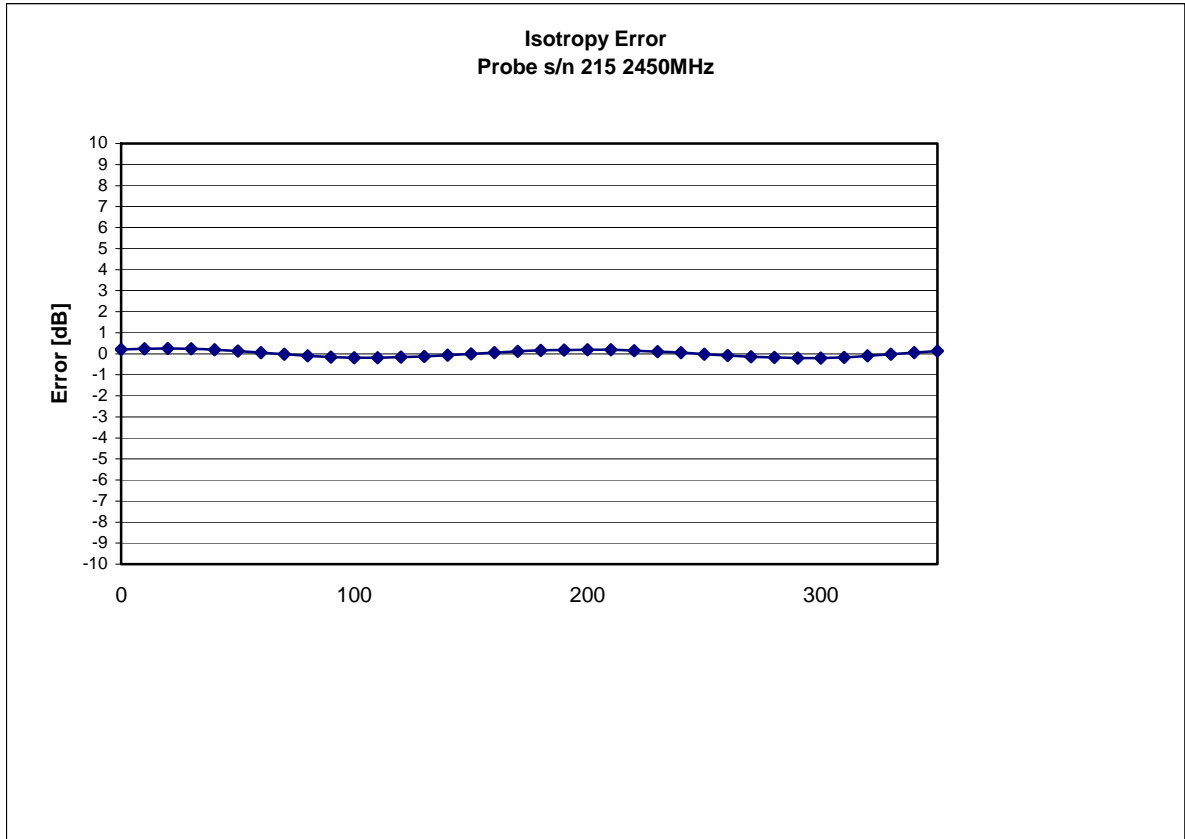
Spatial Resolution:

The measured probe tip diameter is 5 mm (+/- 0.01 mm) and therefore meets the requirements of SSI/DRB-TP-D01-032 for spatial resolution.

Receiving Pattern 2450 MHz (Air)



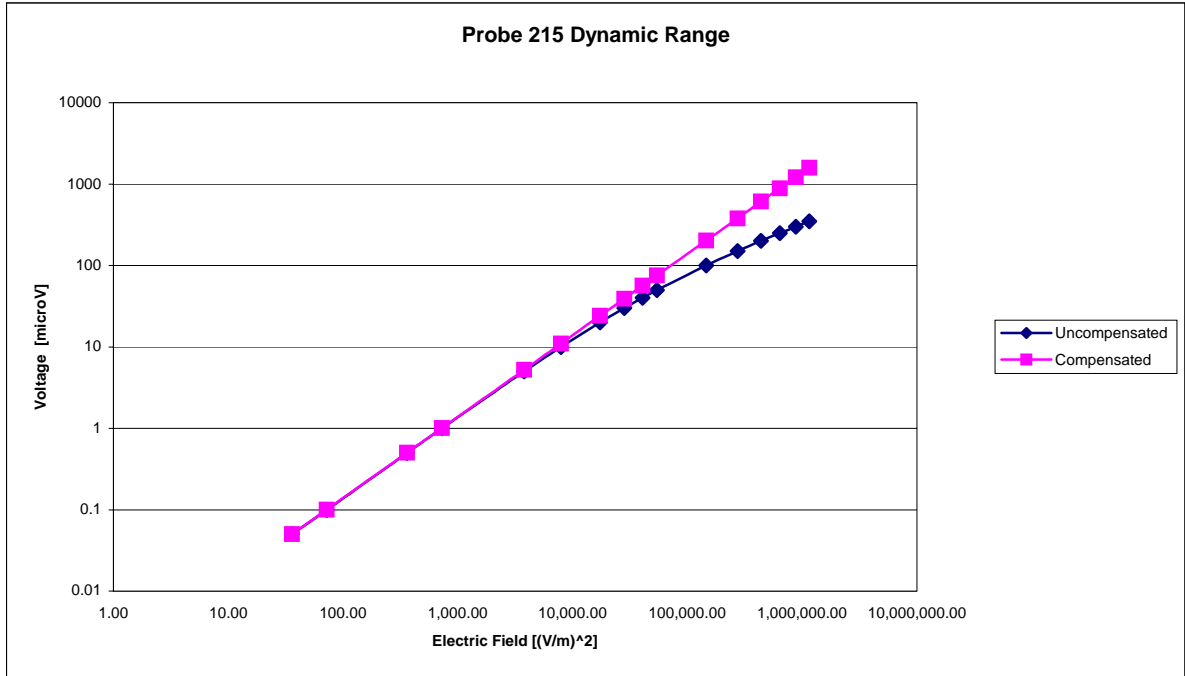
Isotropy Error 2450 MHz (Air)



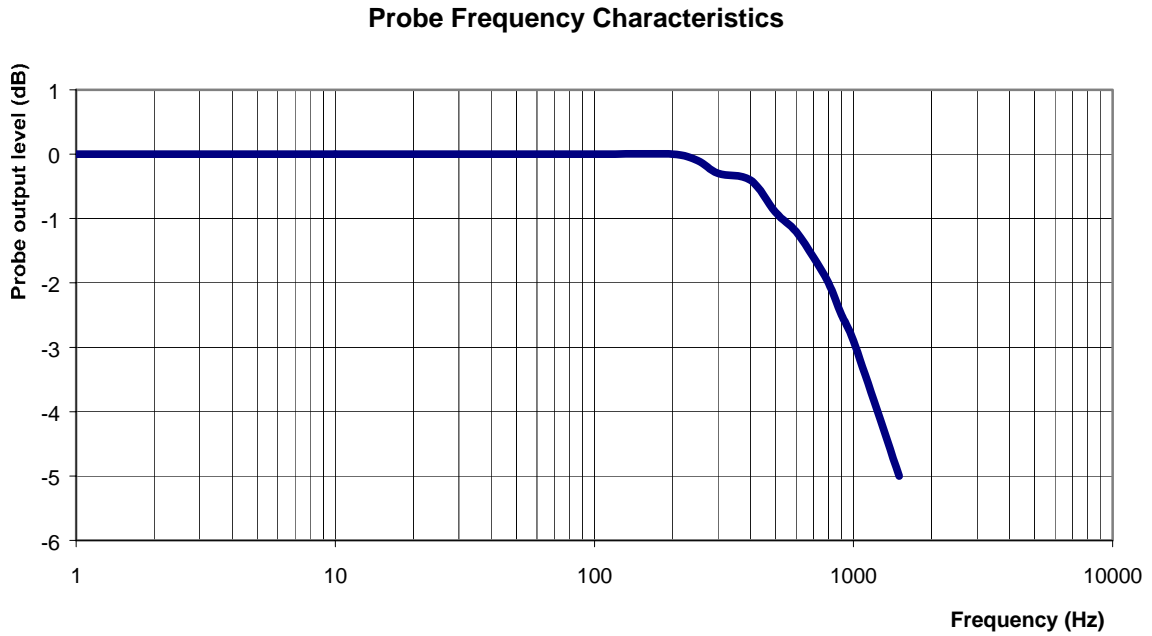
Isotropicity in Tissue:

0.10 dB

Dynamic Range



Video Bandwidth



Video Bandwidth at 500 Hz 1 dB
Video Bandwidth at 1.02 KHz: 3 dB

Conversion Factor Uncertainty Assessment

Frequency: 2450MHz
Epsilon: 39.2 (+/-5%) **Sigma:** 1.80 S/m (+/-10%)

ConvF

Channel X: 4.6 7%(K=2)
Channel Y: 4.6 7%(K=2)
Channel Z: 4.6 7%(K=2)

To minimize the uncertainty calculation all tissue sensitivity values were calculated using a load impedance of 5 MΩ.

Boundary Effect:

For a distance of 2.4mm the evaluated uncertainty (increase in the probe sensitivity) is less than 2%.

Test Equipment

The test equipment used during Probe Calibration, manufacturer, model number and, current calibration status are listed and located on the main APREL server R:\NCL\Calibration Equipment\Instrument List May 2005.

NCL CALIBRATION LABORATORIES

Calibration File No.: CP-607

Client.: RFEL

CERTIFICATE OF CALIBRATION

It is certified that the equipment identified below has been calibrated in the
NCL CALIBRATION LABORATORIES by qualified personnel following recognized
procedures and using transfer standards traceable to NRC/NIST.

Equipment: Miniature Isotropic RF Probe 5200 MHz

Manufacturer: APREL Laboratories

Model No.: E-020

Serial No.: 215

BODY Calibration

Calibration Procedure: SSI/DRB-TP-D01-032-E020-V2

Project No: RFEL-Probe-215-Calibration-5166

Calibrated: 10th June 2005
Released on: 10th June 2005

This Calibration Certificate is Incomplete Unless Accompanied with the Calibration Results Summary

Released By: _____ Signature On File

NCL CALIBRATION LABORATORIES

51 SPECTRUM WAY
NEPEAN, ONTARIO
CANADA K2R 1E6

Division of APREL Lab.
TEL: (613) 820-4988
FAX: (613) 820-4161

Introduction

This Calibration Report reproduces the results of the calibration performed in line with the SSI/DRB-TP-D01-032-E020-V2 E-Field Probe Calibration Procedure. The results contained within this report are for APREL E-Field Probe E-020 215.

References

SSI/DRB-TP-D01-032-E020-V2 E-Field Probe Calibration Procedure
IEEE 1528 "Recommended Practice for Determining the Peak Spatial-Average Specific Absorption Rate (SAR) in the Human Body Due to Wireless Communications Devices: Experimental Techniques"
SSI-TP-011 Tissue Calibration Procedure

Conditions

Probe 215 was a new probe taken from stock prior to calibration.

Ambient Temperature of the Laboratory: 22 °C +/- 0.5°C
Temperature of the Tissue: 21 °C +/- 0.5°C

We the undersigned attest that to the best of our knowledge the calibration of this probe has been accurately conducted and that all information contained within this report has been reviewed for accuracy.

Stuart Nicol
Director Product Development

Janusz Lokaj
Member of Engineering Staff
(Calibration Engineer)

Calibration Results Summary

Probe Type:	E-Field Probe E-020
Serial Number:	215
Frequency:	5200 MHz
Sensor Offset:	1.56 mm
Sensor Length:	2.5 mm
Tip Enclosure:	Ertalyte*
Tip Diameter:	<5 mm
Tip Length:	60 mm
Total Length:	290 mm

*Resistive to recommended tissue recipes per IEEE-1528

Sensitivity in Air

Channel X:	$1.2 \mu\text{V}/(\text{V}/\text{m})^2$
Channel Y:	$1.2 \mu\text{V}/(\text{V}/\text{m})^2$
Channel Z:	$1.2 \mu\text{V}/(\text{V}/\text{m})^2$
Diode Compression Point:	95 mV

Sensitivity in Body Tissue

Frequency:

5200 MHz

Epsilon: 43.4 (+/-5%)

Sigma: 5.7 S/m (+/-10%)

ConvF

Channel X: 2.8

Channel Y: 2.8

Channel Z: 2.8

Tissue sensitivity values were calculated using the load impedance of the APREL Laboratories Daq-Paq.

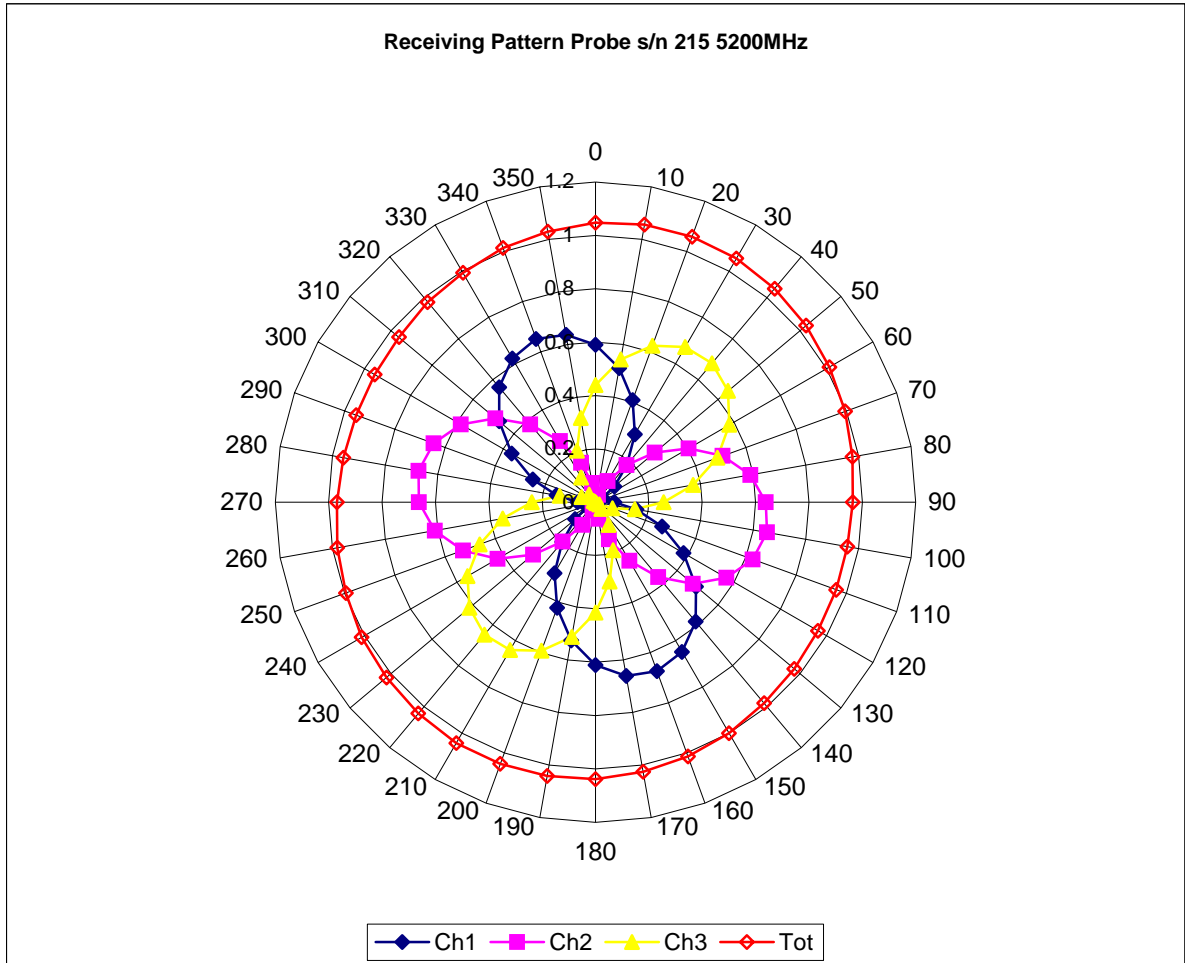
Boundary Effect:

Uncertainty resulting from the boundary effect is less than 2% for the distance between the tip of the probe and the tissue boundary, when less than 2.44mm.

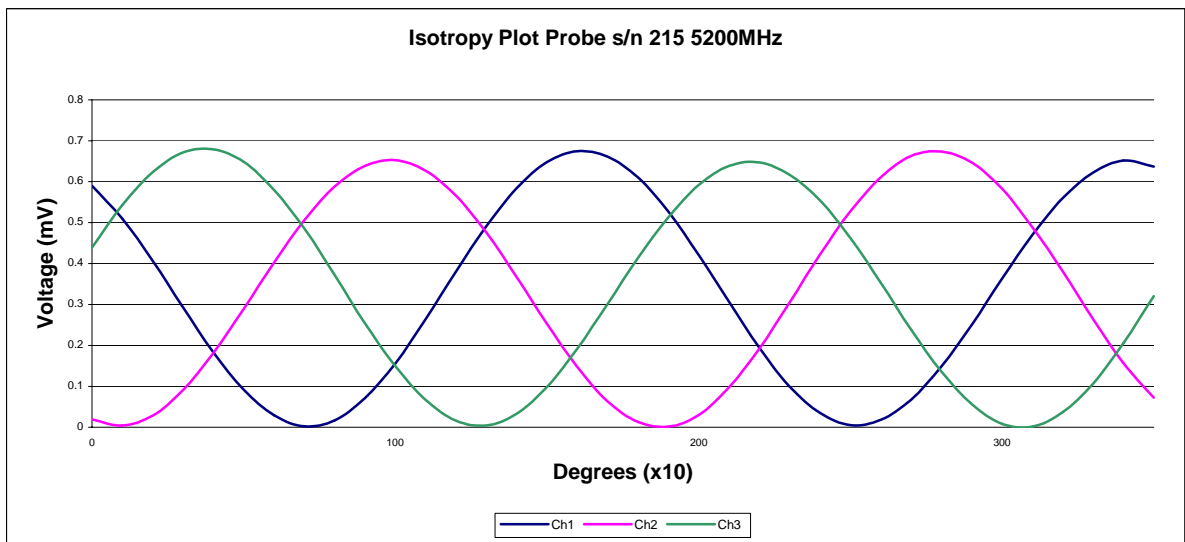
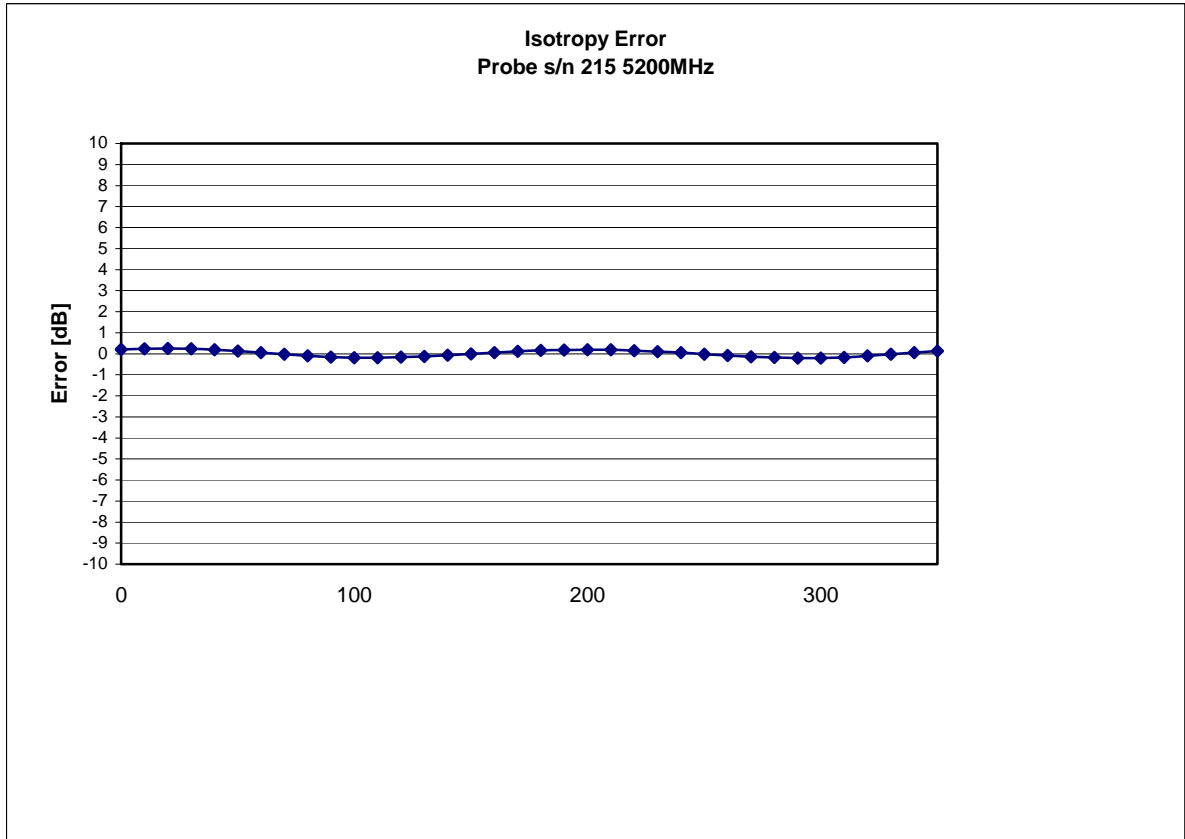
Spatial Resolution:

The measured probe tip diameter is 5 mm (+/- 0.01 mm) and therefore meets the requirements of SSI/DRB-TP-D01-032 for spatial resolution.

Receiving Pattern 5200 MHz (Air)



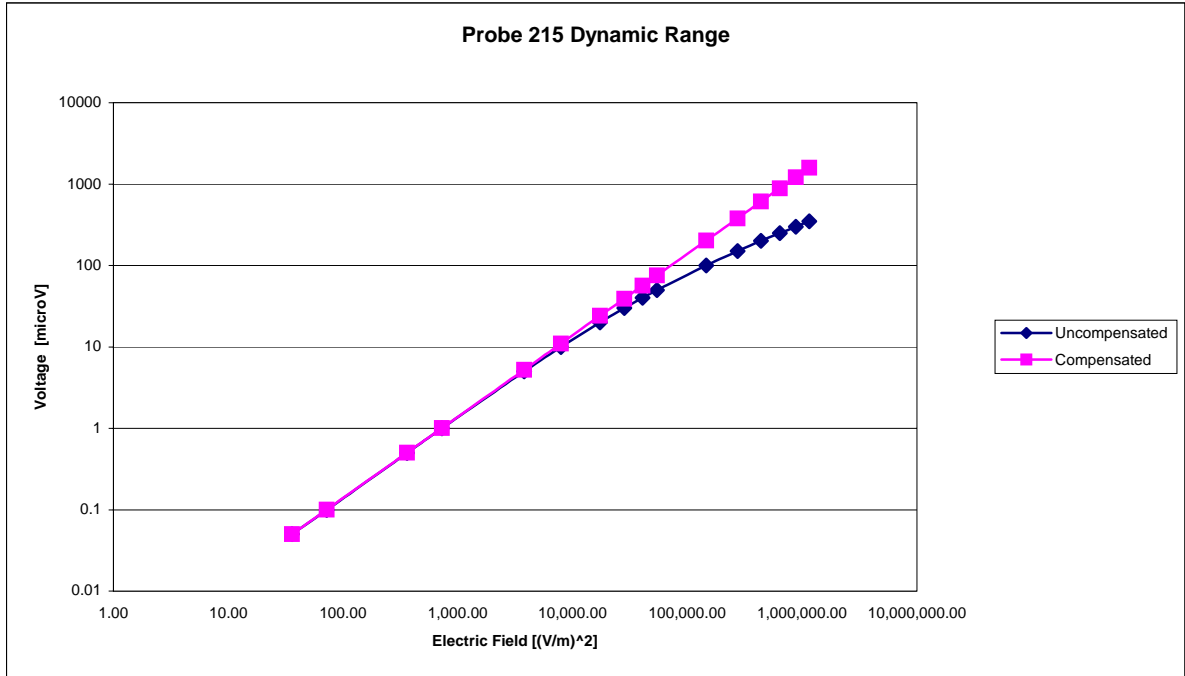
Isotropy Error 5200 MHz (Air)



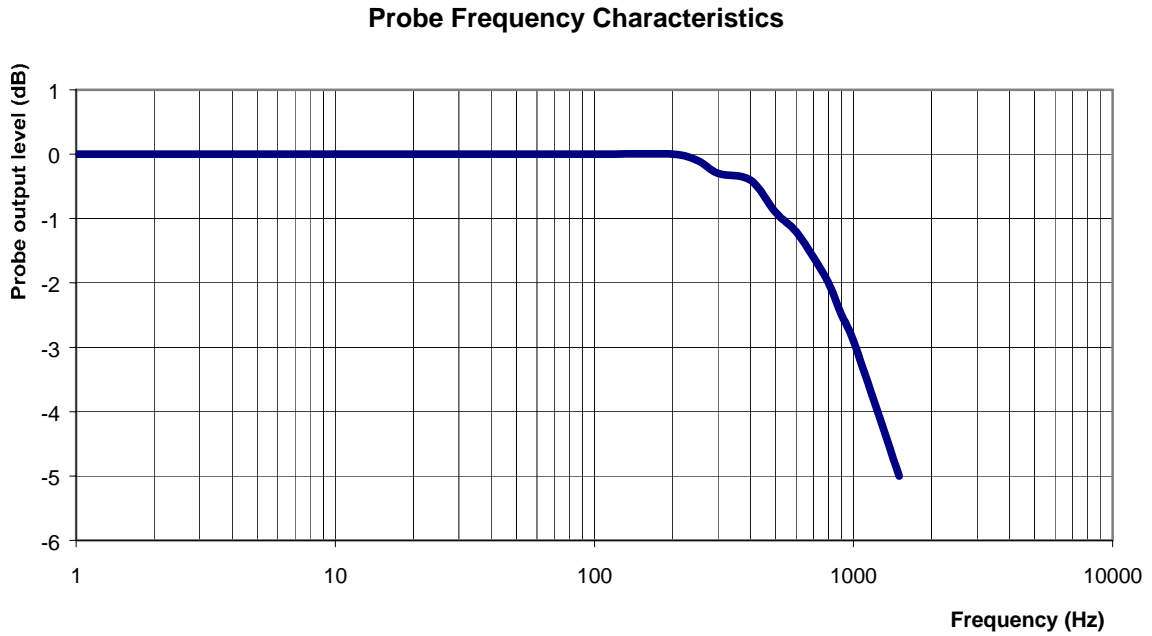
Isotropicity in Tissue:

0.10 dB

Dynamic Range



Video Bandwidth



Video Bandwidth at 500 Hz 1 dB
Video Bandwidth at 1.02 KHz: 3 dB

Conversion Factor Uncertainty Assessment

Frequency: 5200MHz
Epsilon: 43.4 (+/-5%) **Sigma:** 5.7 S/m (+/-10%)

ConvF

Channel X: 2.8 7%(K=2)

Channel Y: 2.8 7%(K=2)

Channel Z: 2.8 7%(K=2)

To minimize the uncertainty calculation all tissue sensitivity values were calculated using a load impedance of 5 MΩ.

Boundary Effect:

For a distance of 2.4mm the evaluated uncertainty (increase in the probe sensitivity) is less than 2%.

Test Equipment

The test equipment used during Probe Calibration, manufacturer, model number and, current calibration status are listed and located on the main APREL server R:\NCL\Calibration Equipment\Instrument List May 2005.

NCL CALIBRATION LABORATORIES

Calibration File No.: CP-609

Client.: RFEL

CERTIFICATE OF CALIBRATION

It is certified that the equipment identified below has been calibrated in the
NCL CALIBRATION LABORATORIES by qualified personnel following recognized
procedures and using transfer standards traceable to NRC/NIST.

Equipment: Miniature Isotropic RF Probe 5800 MHz

Manufacturer: APREL Laboratories

Model No.: E-020

Serial No.: 215

BODY Calibration

Calibration Procedure: SSI/DRB-TP-D01-032-E020-V2

Project No: RFEL-Probe-215-Calibration-5166

Calibrated: 10th June 2005
Released on: 10th June 2005

This Calibration Certificate is Incomplete Unless Accompanied with the Calibration Results Summary

Released By: _____ Signature On File

NCL CALIBRATION LABORATORIES

51 SPECTRUM WAY
NEPEAN, ONTARIO
CANADA K2R 1E6

Division of APREL Lab.
TEL: (613) 820-4988
FAX: (613) 820-4161

Introduction

This Calibration Report reproduces the results of the calibration performed in line with the SSI/DRB-TP-D01-032-E020-V2 E-Field Probe Calibration Procedure. The results contained within this report are for APREL E-Field Probe E-020 215.

References

SSI/DRB-TP-D01-032-E020-V2 E-Field Probe Calibration Procedure
IEEE 1528 "Recommended Practice for Determining the Peak Spatial-Average Specific Absorption Rate (SAR) in the Human Body Due to Wireless Communications Devices: Experimental Techniques"
SSI-TP-011 Tissue Calibration Procedure

Conditions

Probe 215 was a new probe taken from stock prior to calibration.

Ambient Temperature of the Laboratory: 22 °C +/- 0.5°C
Temperature of the Tissue: 21 °C +/- 0.5°C

We the undersigned attest that to the best of our knowledge the calibration of this probe has been accurately conducted and that all information contained within this report has been reviewed for accuracy.

Stuart Nicol
Director Product Development

Janusz Lokaj
Member of Engineering Staff
(Calibration Engineer)

Calibration Results Summary

Probe Type:	E-Field Probe E-020
Serial Number:	215
Frequency:	5800 MHz
Sensor Offset:	1.56 mm
Sensor Length:	2.5 mm
Tip Enclosure:	Ertalyte*
Tip Diameter:	<5 mm
Tip Length:	60 mm
Total Length:	290 mm

*Resistive to recommended tissue recipes per IEEE-1528

Sensitivity in Air

Channel X:	1.2 $\mu\text{V}/(\text{V}/\text{m})^2$
Channel Y:	1.2 $\mu\text{V}/(\text{V}/\text{m})^2$
Channel Z:	1.2 $\mu\text{V}/(\text{V}/\text{m})^2$
Diode Compression Point:	95 mV

Sensitivity in Body Tissue

Frequency:

5800 MHz

Epsilon: 49.6 (+/-5%)

Sigma: 6.25 S/m (+/-10%)

ConvF

Channel X: 2.1

Channel Y: 2.1

Channel Z: 2.1

Tissue sensitivity values were calculated using the load impedance of the APREL Laboratories Daq-Paq.

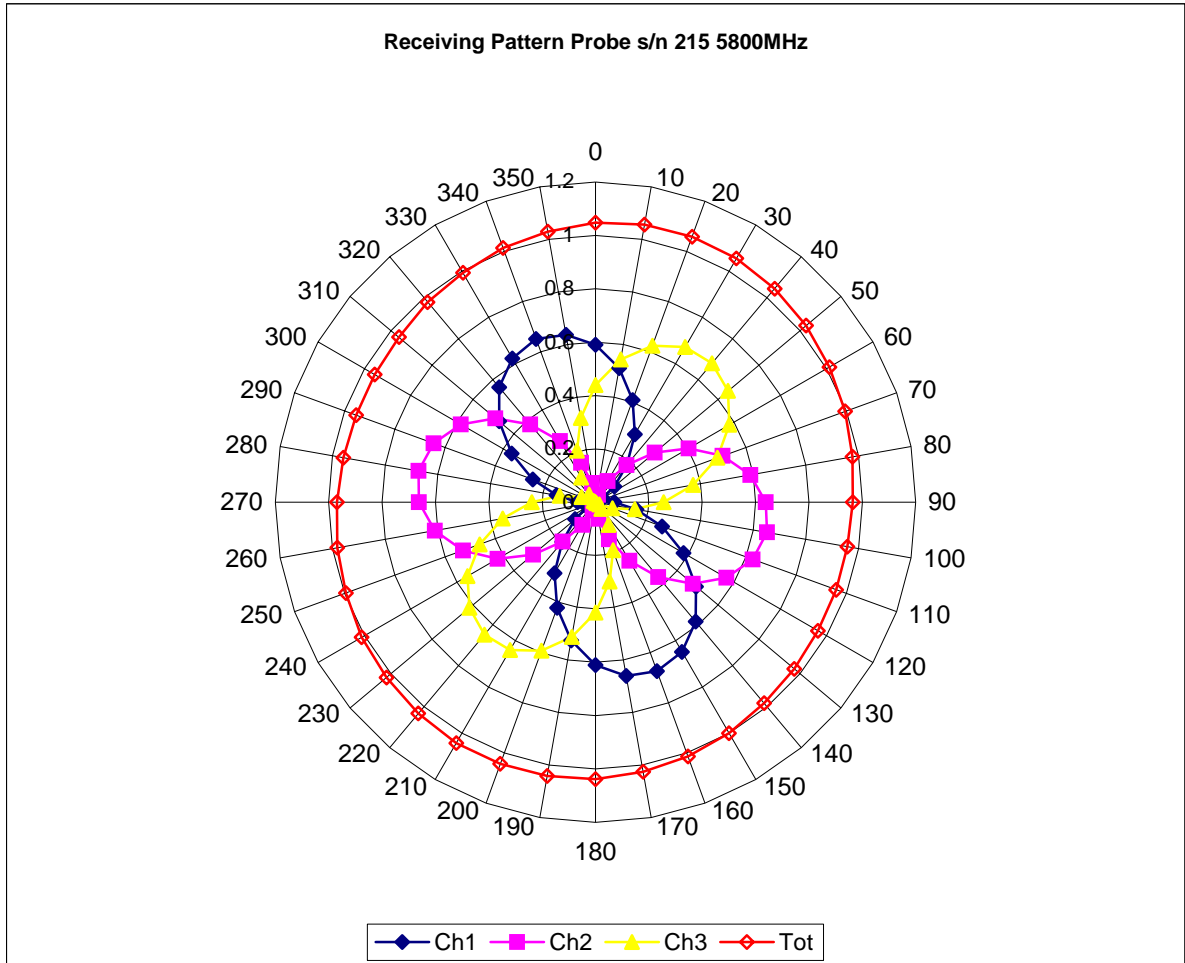
Boundary Effect:

Uncertainty resulting from the boundary effect is less than 2% for the distance between the tip of the probe and the tissue boundary, when less than 2.44mm.

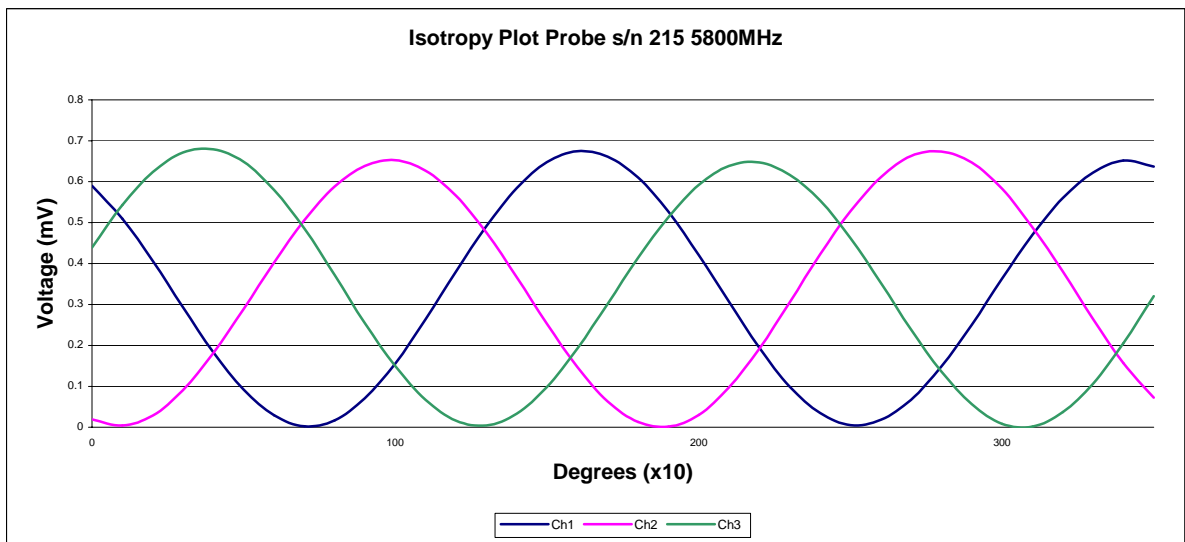
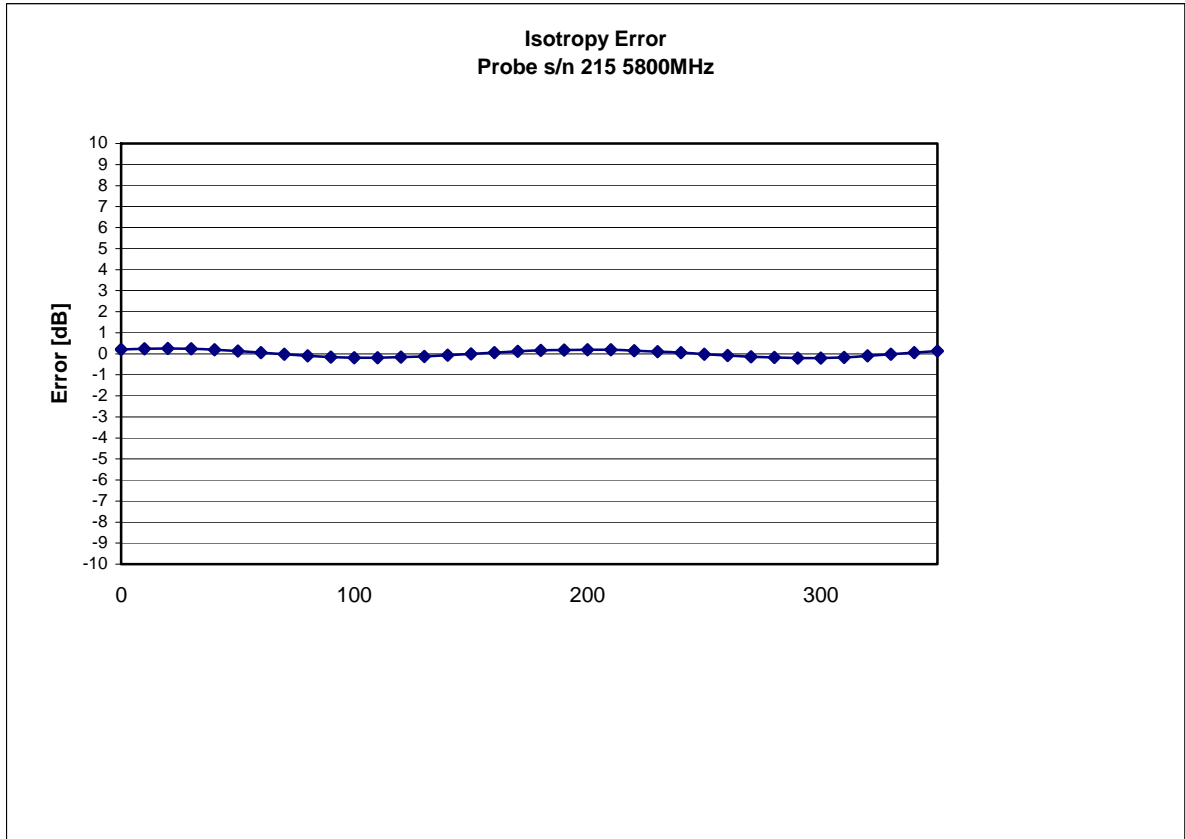
Spatial Resolution:

The measured probe tip diameter is 5 mm (+/- 0.01 mm) and therefore meets the requirements of SSI/DRB-TP-D01-032 for spatial resolution.

Receiving Pattern 5800 MHz (Air)



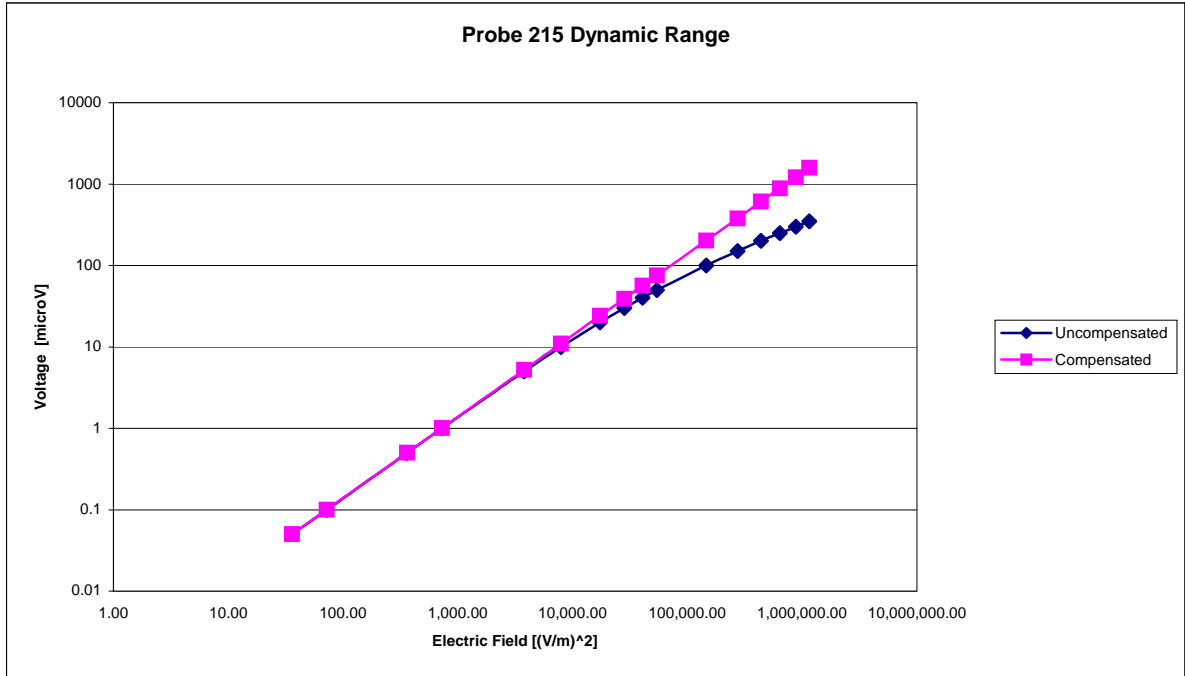
Isotropy Error 5800 MHz (Air)



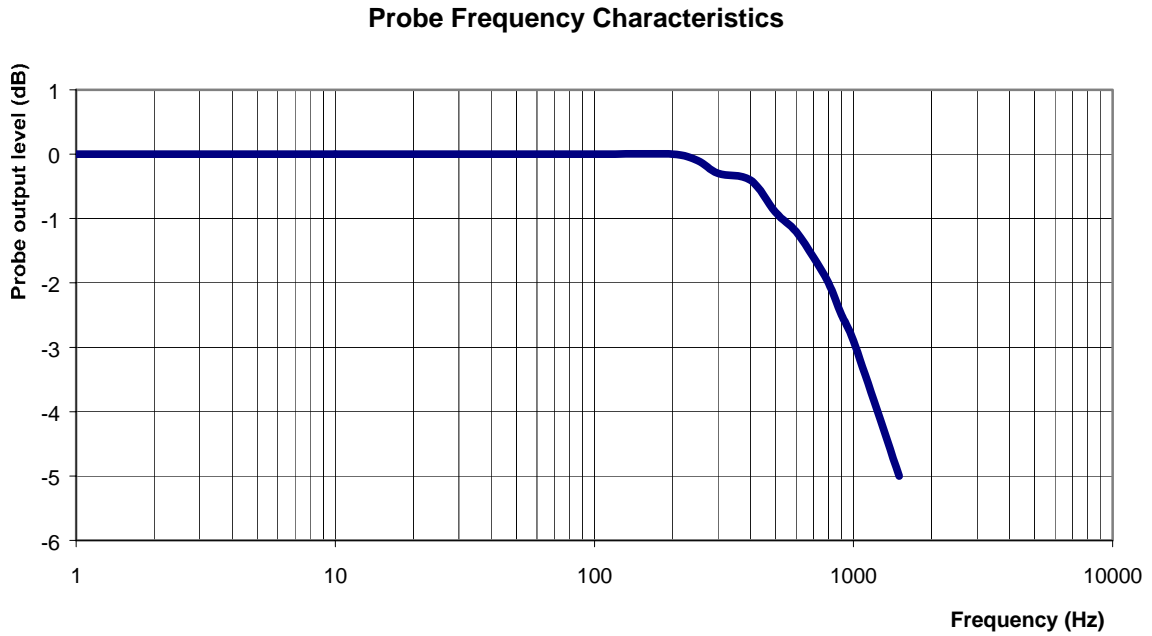
Isotropicity in Tissue:

0.10 dB

Dynamic Range



Video Bandwidth



Video Bandwidth at 500 Hz 1 dB
Video Bandwidth at 1.02 KHz: 3 dB

Conversion Factor Uncertainty Assessment

Frequency: 5800MHz

Epsilon: 49.6 (+/-5%)

Sigma: 6.25 S/m (+/-10%)

ConvF

Channel X: 2.1 7%(K=2)

Channel Y: 2.1 7%(K=2)

Channel Z: 2.1 7%(K=2)

To minimize the uncertainty calculation all tissue sensitivity values were calculated using a load impedance of 5 M Ω .

Boundary Effect:

For a distance of 2.4mm the evaluated uncertainty (increase in the probe sensitivity) is less than 2%.

Test Equipment

The test equipment used during Probe Calibration, manufacturer, model number and, current calibration status are listed and located on the main APREL server R:\NCL\Calibration Equipment\Instrument List May 2005.

Appendix E – Dipole Calibration Data Sheets

RF Exposure Lab, LLC

Calibration File No: CAL.20060203

CERTIFICATE OF CALIBRATION

It is certified that the equipment identified below has been calibrated at RF Exposure Lab, LLC by qualified personnel following recognized procedures and using transfer standards traceable to NRC/NIST.

Validation Dipole

Manufacturer: APREL Laboratories

Part Number: ALS-D-2450-S-2

Frequency: 2.4 GHz

Serial No: RFE-278

Manufactured: 20 February 2004
Calibrated: 17 February 2006

Calibrated By: Signature on File
Jay Moulton – Technical Manager

Approved By: Signature on File
Tamara Moulton – Quality Manager



RF EXPOSURE LAB, LLC

2867 Progress Place, Suite 4D
Escondido, CA 92029

Tel: (760) 737-3131
FAX: (760) 737-9131

Calibration Results Summary

The following results relate to the Calibrated Dipole and should be used as a quick reference for the user.

Mechanical Dimensions

Length: 51.5 mm
Height: 30.5 mm

Electrical Specifications

Head

SWR: 1.0994 U
Return Loss: -28.139 dB
Impedance: 53.471 Ω

System Validation Results

Frequency	1 Gram	10 Gram
1.9 GHz	52.920	26.370

Body

SWR: 1.1373 U
Return Loss: -31.923 dB
Impedance: 53.338 Ω

System Validation Results

Frequency	1 Gram	10 Gram
1.9 GHz	54.230	24.880

Head Measurement Conditions

The measurements were performed in the Uni-Phantom filled with head simulating liquid of the following electrical parameters at 2450 MHz:

Relative Dielectricity	39.63	± 5%
Conductivity	1.82 mho/m	± 5%

The APREL Laboratories ALSAS system with a dosimetric E-field probe E-020 (SN:215, Conversion factor 4.6 at 2450 MHz) was used for the measurements.

The dipole was mounted so that the dipole feed point was positioned below the center marking of the flat phantom and the dipole was oriented parallel to the body axis (the long side of the phantom). The standard measuring distance was 10mm from the dipole center to the solution surface.

The coarse grid with a grid spacing of 10mm was aligned with the dipole. The 5x5x8 fine cube was chosen for cube integration. The dipole input power (forward power) was 100mW ± 3%. The results are normalized to 1W input power.

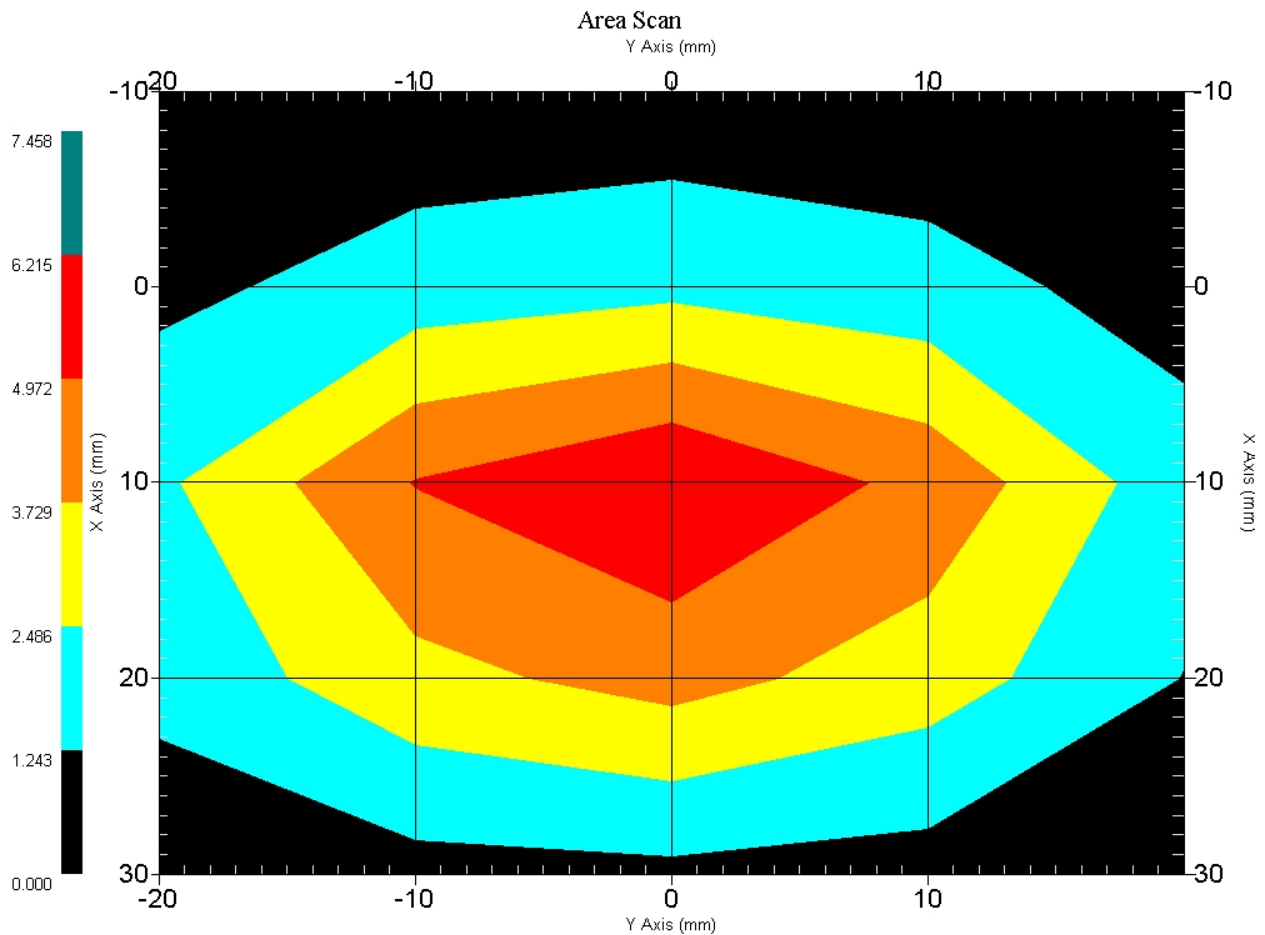
The laboratories environmental conditions were as follows during the calibration sequence.

Ambient Temperature of the Laboratory:	23 °C ± 1.0 °C
Temperature of the Tissue:	20 °C ± 1.0 °C
Relative Humidity:	42%

SAR Measurement

Standard SAR measurements were performed according to the measurement conditions described above. The results have been normalized to a dipole input power of 1W (forward power). The resulting averaged SAR values measured with the dosimetric probe E-020 SN:215 and applying the advanced extrapolation are:

Averaged over 1 cm³ (1 g) of tissue: 52.920 mW/g ± 19.7% (k=2)¹
 Averaged over 10 cm³ (10 g) of tissue: 26.370 mW/g ± 19.4% (k=2)¹



1 gram SAR value : 5.292 W/kg
 10 gram SAR value : 2.637 W/kg
 Area Scan Peak SAR : 6.215 W/kg
 Zoom Scan Peak SAR : 10.080 W/kg

¹ validation uncertainty

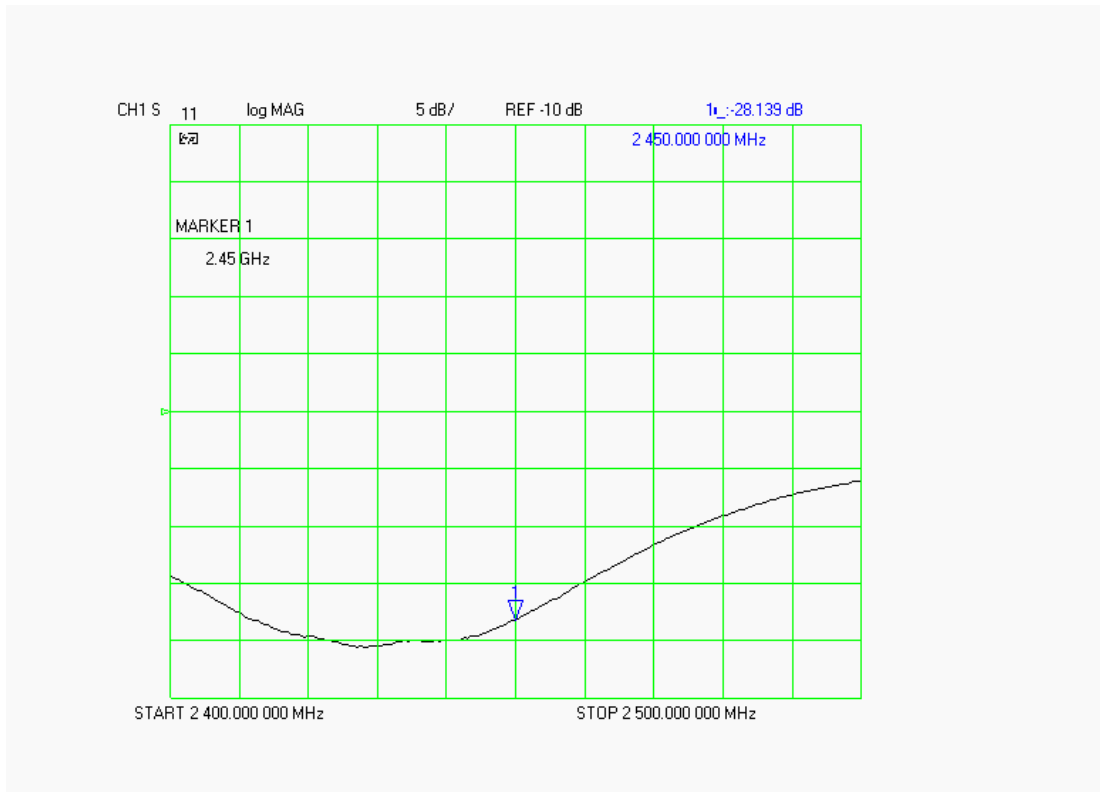
Dipole Impedance and Return Loss

The impedance was measured at the SMA connector with a network analyzer. The dipole was positioned at the flat phantom sections according to measurement conditions stated above during impedance measurements.

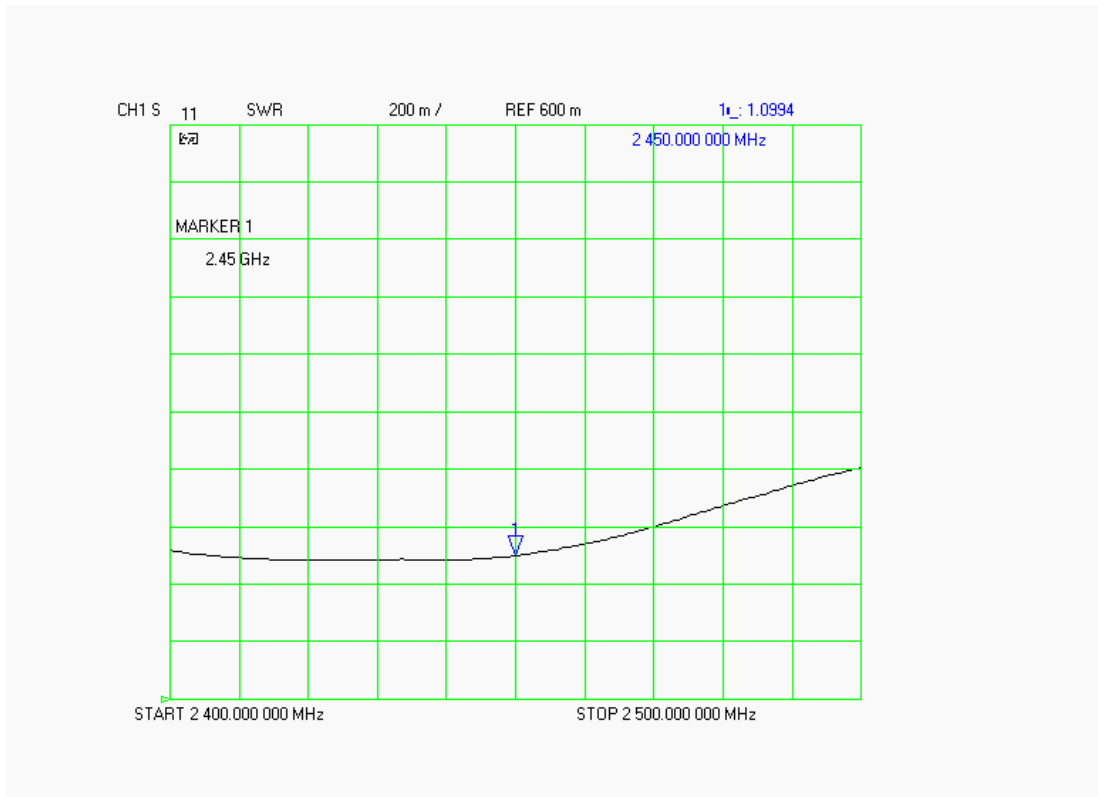
Test	Result
S11 R/L	-28.139 dB
SWR	1.0994 U
Impedance	53.471 Ω

The following graphs are the results as displayed on the Vector Network Analyzer.

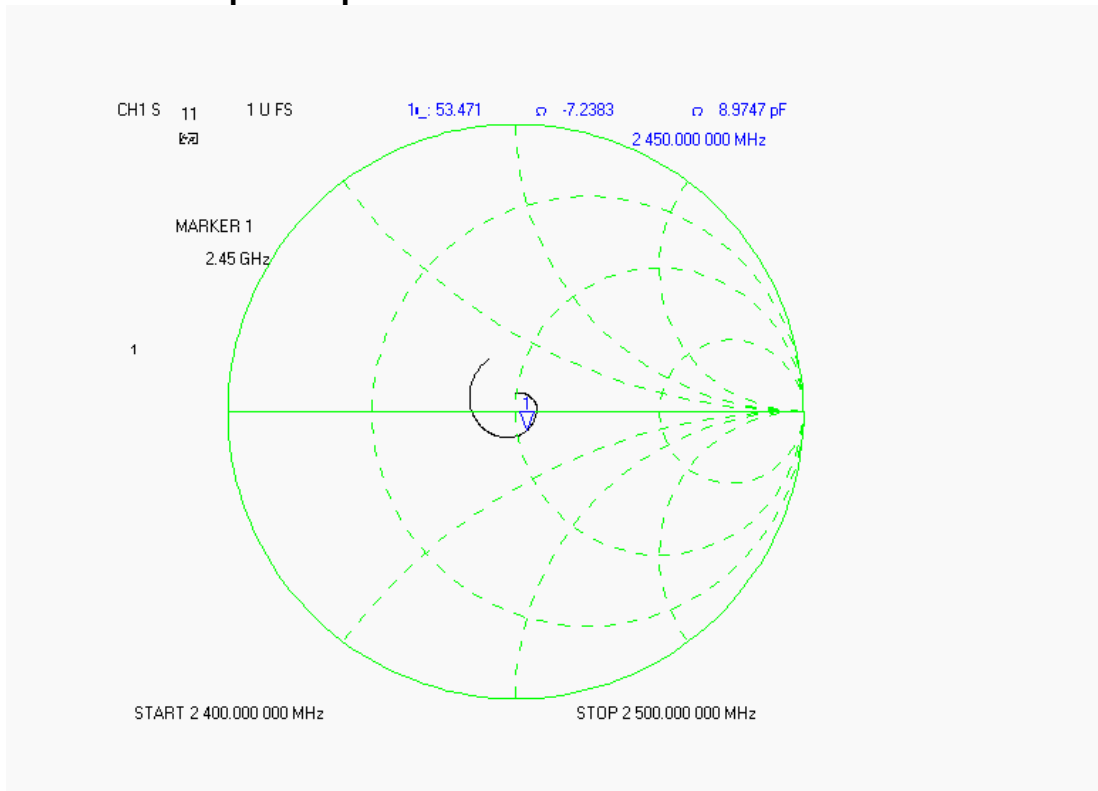
S11 Parameter Return Loss



SWR



Smith Chart Dipole Impedance



Body Measurement Conditions

The measurements were performed in the Uni-Phantom filled with body simulating liquid of the following electrical parameters at 2450 MHz:

Relative Dielectricity	51.09	± 5%
Conductivity	1.96 mho/m	± 5%

The APREL Laboratories ALSAS system with a dosimetric E-field probe E-020 (SN:215, Conversion factor 4.6 at 2450 MHz) was used for the measurements.

The dipole was mounted so that the dipole feed point was positioned below the center marking of the flat phantom and the dipole was oriented parallel to the body axis (the long side of the phantom). The standard measuring distance was 10mm from the dipole center to the solution surface.

The coarse grid with a grid spacing of 10mm was aligned with the dipole. The 5x5x8 fine cube was chosen for cube integration. The dipole input power (forward power) was 100mW ± 3%. The results are normalized to 1W input power.

The laboratories environmental conditions were as follows during the calibration sequence.

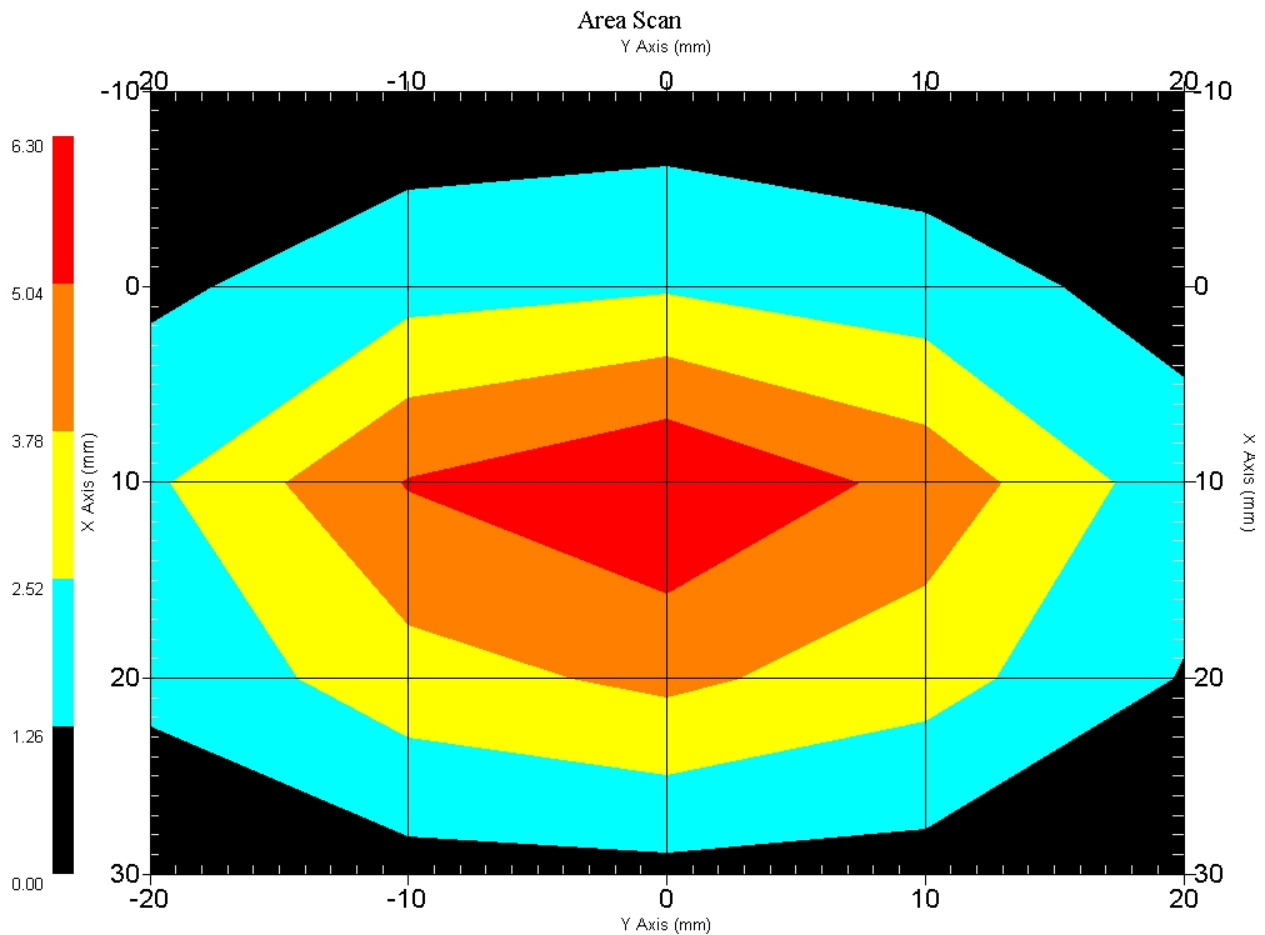
Ambient Temperature of the Laboratory:	20 °C ± 1.0 °C
Temperature of the Tissue:	20 °C ± 1.0 °C
Relative Humidity:	43%

SAR Measurement

Standard SAR measurements were performed according to the measurement conditions described above. The results have been normalized to a dipole input power of 1W (forward power). The resulting averaged SAR values measured with the dosimetric probe E-020 SN:215 and applying the advanced extrapolation are:

Averaged over 1 cm³ (1 g) of tissue: 54.230 mW/g ± 18.8% (k=2)¹

Averaged over 10 cm³ (10 g) of tissue: 24.880 mW/g ± 18.4% (k=2)¹



1 gram SAR value : 5.423 W/kg
 10 gram SAR value : 2.488 W/kg
 Area Scan Peak SAR : 6.298 W/kg
 Zoom Scan Peak SAR : 11.090 W/kg

¹ validation uncertainty

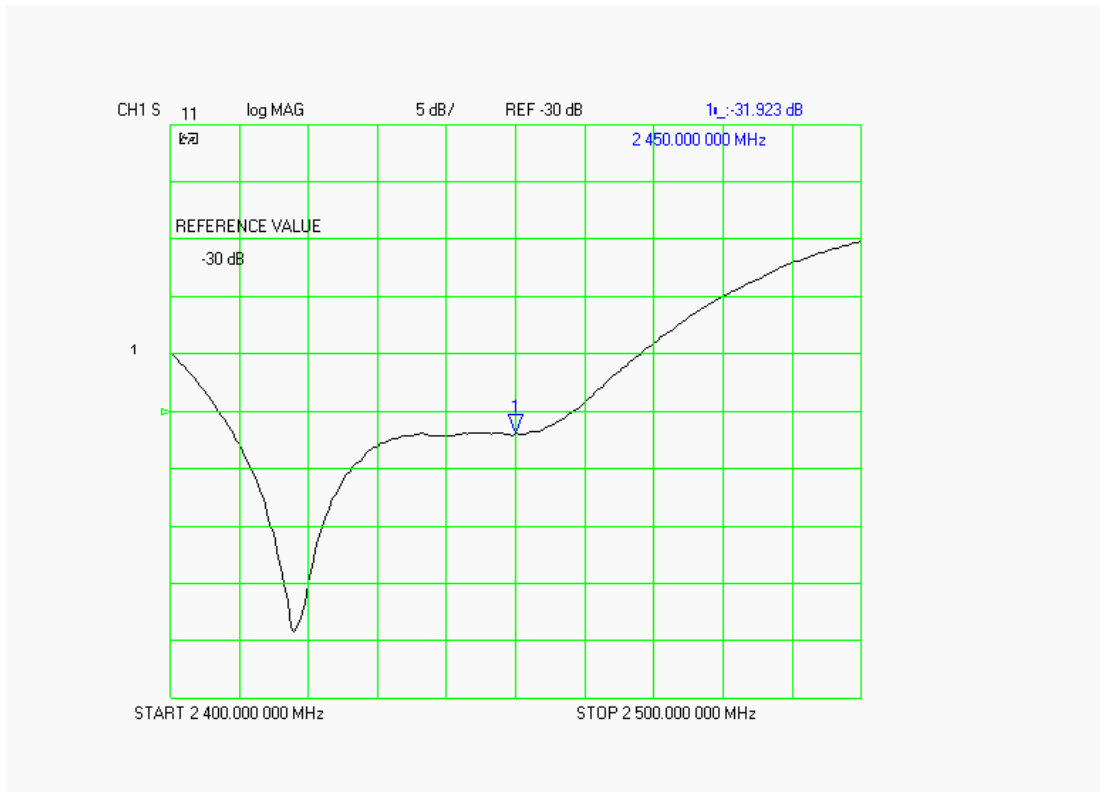
Dipole Impedance and Return Loss

The impedance was measured at the SMA connector with a network analyzer. The dipole was positioned at the flat phantom sections according to measurement conditions stated above during impedance measurements.

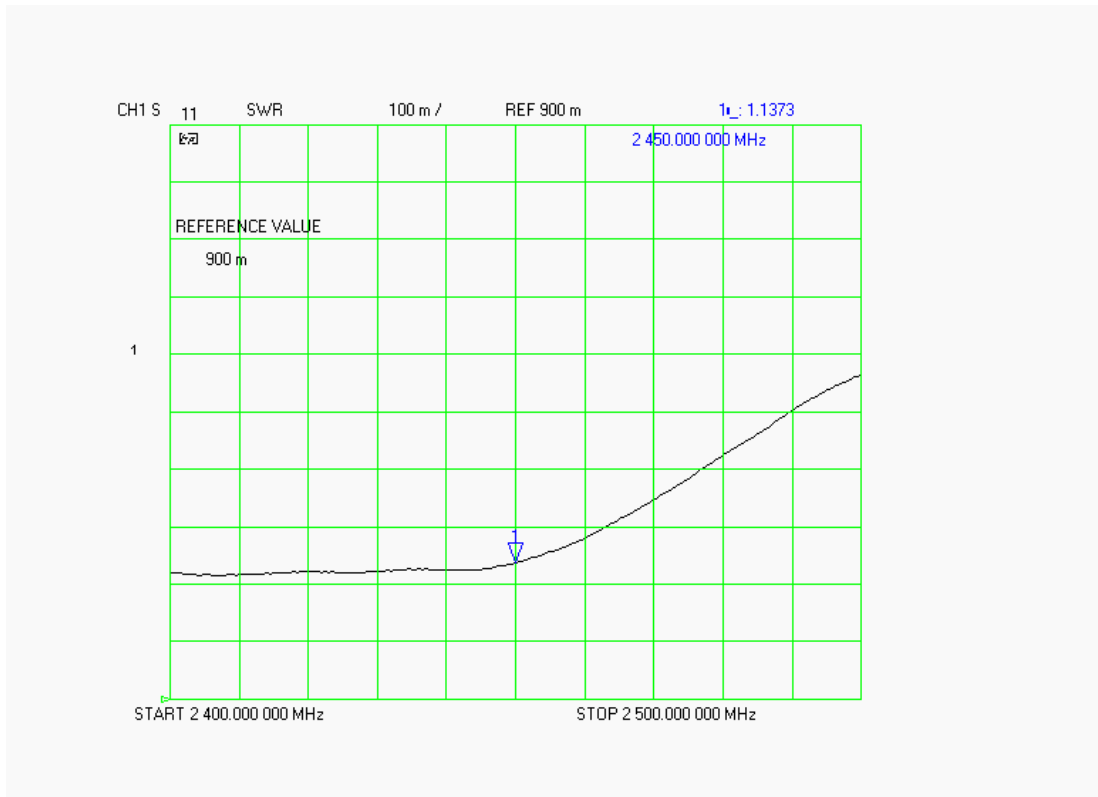
Test	Result
S11 R/L	-31.923 dB
SWR	1.1373 U
Impedance	53.338 Ω

The following graphs are the results as displayed on the Vector Network Analyzer.

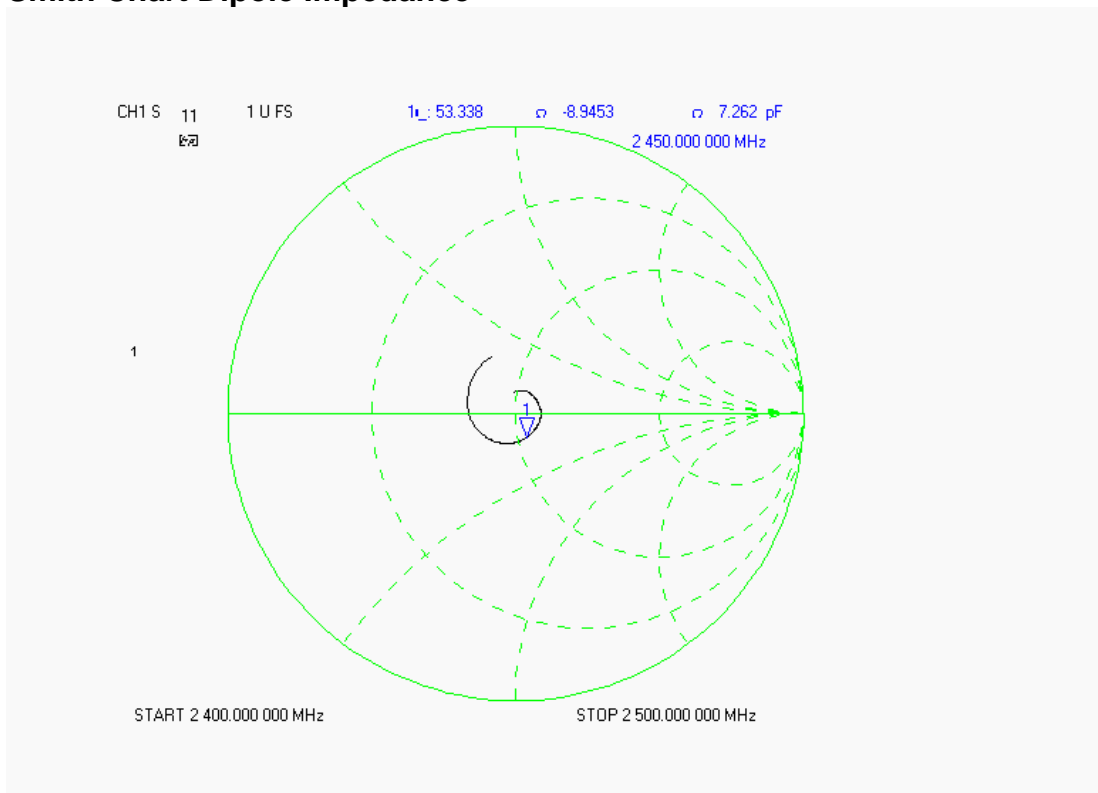
S11 Parameter Return Loss



SWR



Smith Chart Dipole Impedance



Test Equipment List

Type	Calibration Due Date	Serial Number
ThermoCRS Robot	N/A	RAF0338198
ThermoCRS Controller	N/A	RCF0338224
ThermoCRS Teach Pendant (Joystick)	N/A	STP0334405
IBM Computer, 2.66 MHz P4	N/A	8189D8U KCPR08N
Apriel E-Field Probe ALS-E020	06/10/2006	RFE-215
Apriel E-Field Probe ALS-E020	01/25/2007	
Apriel UniPhantom	N/A	RFE-273
Agilent (HP) 437B Power Meter	12/12/2006	3125U08837
Agilent (HP) 8481B Power Sensor	12/19/2006	3318A05384
Agilent (HP) 8350B Signal Generator	03/03/2006	2749A10226
Agilent (HP) 83525A RF Plug-In	03/03/2006	2647A01172
Agilent (HP) 8753C Vector Network Analyzer	02/02/2007	3135A01724
Agilent (HP) 85047A S-Parameter Test Set	02/02/2007	2904A00595
Apriel Dielectric Probe Assembly	N/A	0011
Microwave Power Devices 510-10E Amplifier	03/03/2006	6063-001
Microwave Power Devices 1020-9E Amplifier	03/03/2006	5618-1
Brain Equivalent Matter (835 MHz)	N/A	N/A
Brain Equivalent Matter (1900 MHz)	N/A	N/A
Brain Equivalent Matter (900 MHz)	N/A	N/A
Muscle Equivalent Matter (835 MHz)	N/A	N/A
Muscle Equivalent Matter (1900 MHz)	N/A	N/A
Muscle Equivalent Matter (900 MHz)	N/A	N/A
Muscle Equivalent Matter (2450 MHz)	N/A	N/A
Muscle Equivalent Matter (5200 MHz)	N/A	N/A

NCL CALIBRATION LABORATORIES

Calibration File No: DC-591
Project Number: RFEL-CAL-D-5258-5163

CERTIFICATE OF CALIBRATION

It is certified that the equipment identified below has been calibrated in the
NCL CALIBRATION LABORATORIES by qualified personnel following recognized
procedures and using transfer standards traceable to NRC/NIST.

RFEL Validation Dipole

Manufacturer: APREL Laboratories

Part number: ALS-D-5258-S-2

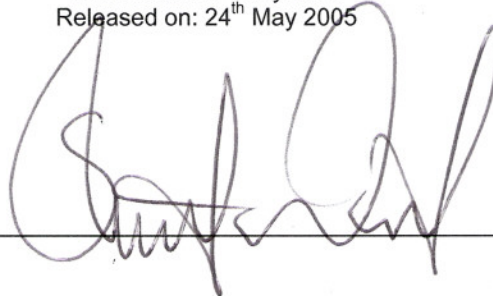
Frequency: 5.2GHz to 5.8GHz

Serial No: 5258-235-00801

Customer: RFEL

Calibrated: 24th May 2005
Released on: 24th May 2005

Released By: _____



NCL CALIBRATION LABORATORIES

51 SPECTRUM WAY
NEPEAN, ONTARIO
CANADA K2R 1E6

Division of APREL Lab.
TEL: (613) 820-4988
FAX: (613) 820-4162

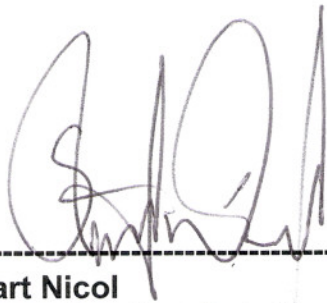
Conditions

Dipole 5258-235-00801 was new and taken from stock prior to calibration.

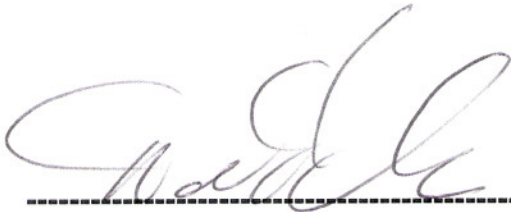
Ambient Temperature of the Laboratory: 22 °C +/- 0.5°C

Temperature of the Tissue: 21 °C +/- 0.5°C

We the undersigned attest that to the best of our knowledge the calibration of this device has been accurately conducted and that all information contained within this report has been reviewed for accuracy.



Stuart Nicol
Director Product Development



D. Brooks
Member of Engineering Staff
(Calibration Engineer)

Calibration Results Summary

The following results relate the Calibrated Dipole and should be used as a quick reference for the user.

Mechanical Dimensions

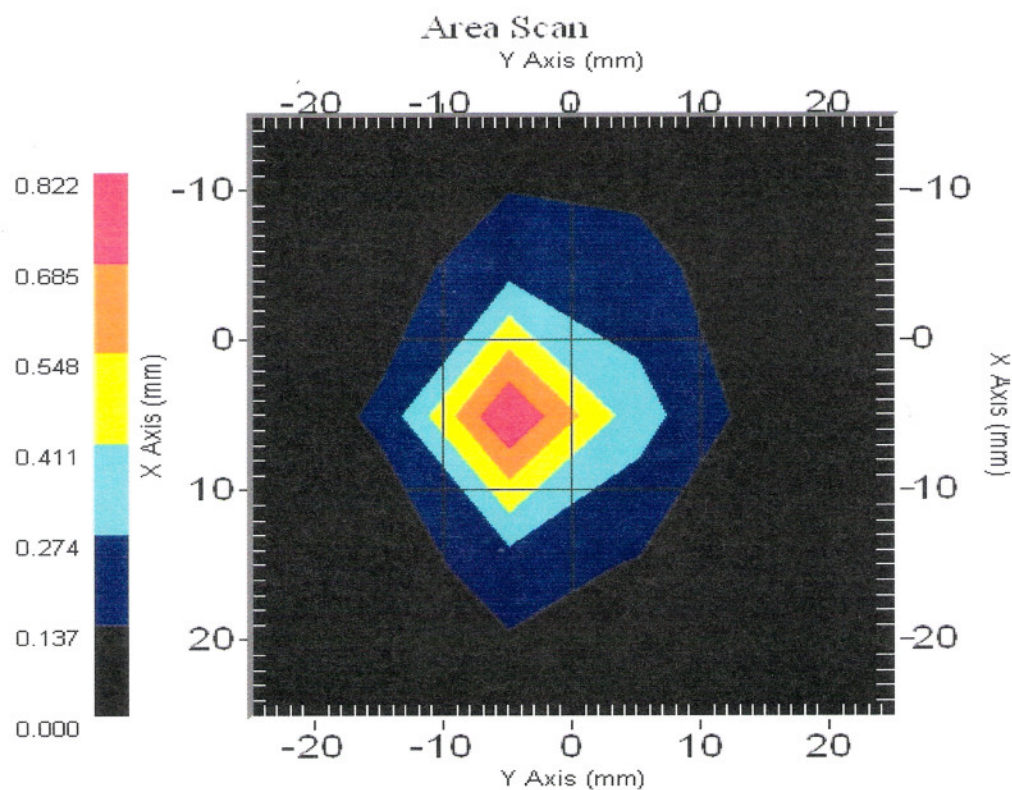
Length: 23.3 mm
Height: 20.3 mm

Electrical Specification

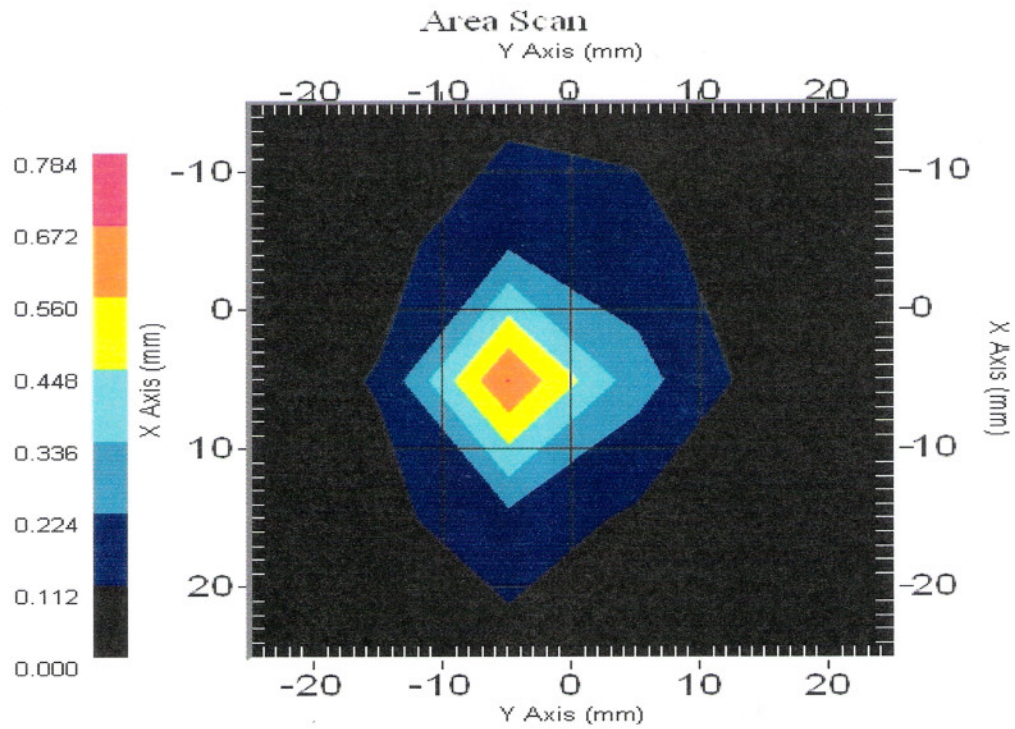
SWR: 1.22 U
Return Loss: -20.0 dB
Impedance: 50.0 Ω

System Validation Results

Frequency	1 Gram	10 Gram	Peak
5200 MHz	62.9	17.9	223.1



Frequency	1 Gram	10 Gram	Peak
5800 MHz	58.3	18	207.1



Introduction

This Calibration Report has been produced in line with the SSI Dipole Calibration Procedure SSI-TP-018-ALSAS. The results contained within this report are for Validation Dipole 5258-235-00801. The calibration routine consisted of a three-step process. Step 1 was a mechanical verification of the dipole to ensure that it meets the mechanical specifications. Step 2 was an Electrical Calibration for the Validation Dipole, where the SWR, Impedance, and the Return loss were assessed. Step 3 involved a System Validation using the ALSAS-10U, along with APREL E-020 130 MHz to 26 GHz E-Field Probe Serial Number 212.

References

SSI-TP-018-ALSAS Dipole Calibration Procedure
SSI-TP-016 Tissue Calibration Procedure
IEEE 1528 "Recommended Practice for Determining the Peak Spatial-Average Specific Absorption Rate (SAR) in the Human Body Due to Wireless Communications Devices: Experimental Techniques"

Conditions

Dipole 5258-235-00801 was new taken from stock.

Ambient Temperature of the Laboratory: 22 °C +/- 0.5°C
Temperature of the Tissue: 20 °C +/- 0.5°C

Dipole Calibration Results

Tissue Validation

Head Tissue 5200 MHz	Measured
Dielectric constant, ϵ_r	35.3
Conductivity, σ [S/m]	5.30

Head Tissue 5800 MHz	Measured
Dielectric constant, ϵ_r	35.3
Conductivity, σ [S/m]	5.30

Mechanical Verification

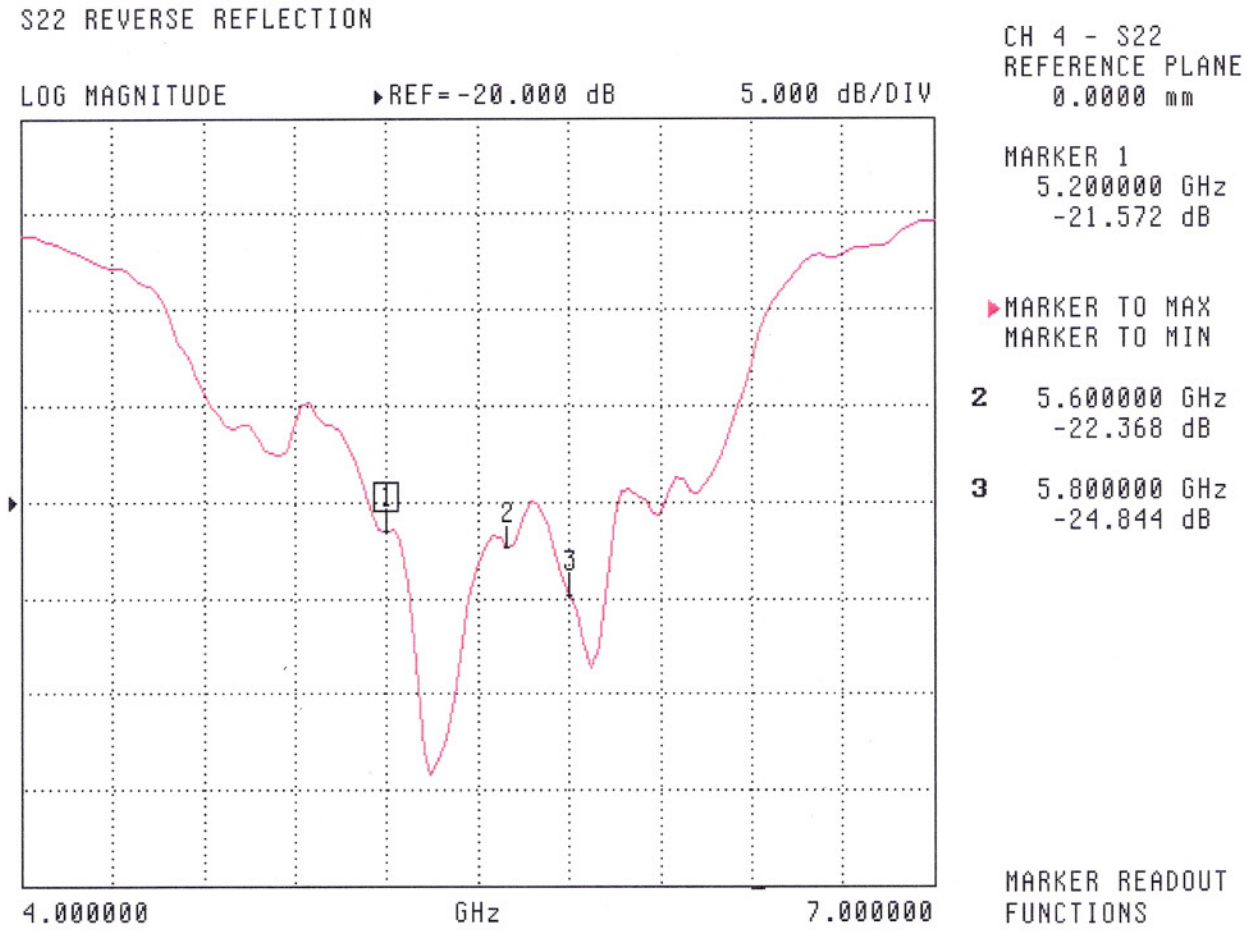
APREL Length	APREL Height	Measured Length	Measured Height
23.1 mm	20.7 mm	23.3 mm	20.3 mm

Electrical Calibration

S11	5200MHz	5800MHz
RL (dB)	-21.6	-24.8
SWR	1.19	1.12
Impedance (ohms)	45.6	50.7

The Following Graphs are the results as displayed on the Vector Network Analyzer.

S11 Parameter Return Loss



SWR

S22 REVERSE REFLECTION

SWR REF=2.500 U 500.000 mU/DIV



CH 4 - S22
REFERENCE PLANE
0.0000 mm

MARKER 1
5.200000 GHz
1.189 U

▶ MARKER TO MAX
MARKER TO MIN

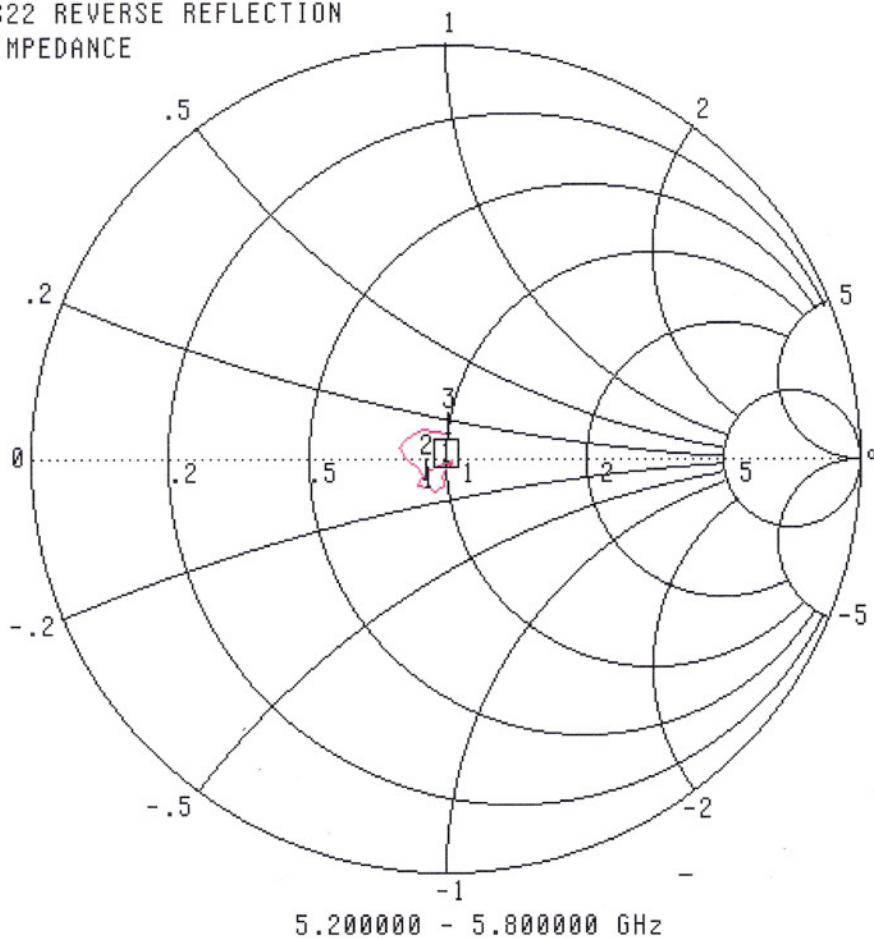
2 5.600000 GHz
1.153 U

3 5.800000 GHz
1.124 U

MARKER READOUT
FUNCTIONS

Smith Chart Dipole Impedance

S22 REVERSE REFLECTION
IMPEDANCE



CH 4 - S22
REFERENCE PLANE
0.0000 mm

MARKER 1
5.200000 GHz
45.566 Ω
-6.839 $j\Omega$

▶ MARKER TO MAX
MARKER TO MIN

2 5.600000 GHz
45.348 Ω
-4.725 $j\Omega$
3 5.800000 GHz
50.691 Ω
5.736 $j\Omega$

MARKER READOUT
FUNCTIONS

Test Equipment

The test equipment used during Probe Calibration, manufacturer, model number and, current calibration status are listed and located on the main APREL server R:\NCL\Calibration Equipment\Instrument List May 2004

Appendix F – Phantom Calibration Data Sheets

NCL CALIBRATION LABORATORIES

Calibration File No.: RFE-273

CERTIFICATE OF CALIBRATION

It is certified that the equipment identified below has been calibrated in the **NCL CALIBRATION LABORATORIES** by qualified personnel following recognized procedures and using transfer standards traceable to National Standards.

Thickness of the UniPhantom is 2 mm \pm 10%
Pinna thickness is 6 mm \pm 10%

Resolution:	0.01 mm	Calibrated to:	0.0 mm
Stability:	OK	Accuracy:	< 0.1 mm

Calibrated By: Karen K. Feb 17/04.

NCL CALIBRATION LABORATORIES

51 SPECTRUM WAY
NEPEAN, ONTARIO
CANADA K2R 1E6

Division of APREL Lab.
TEL: (613) 820-4988
FAX: (613) 820-4161