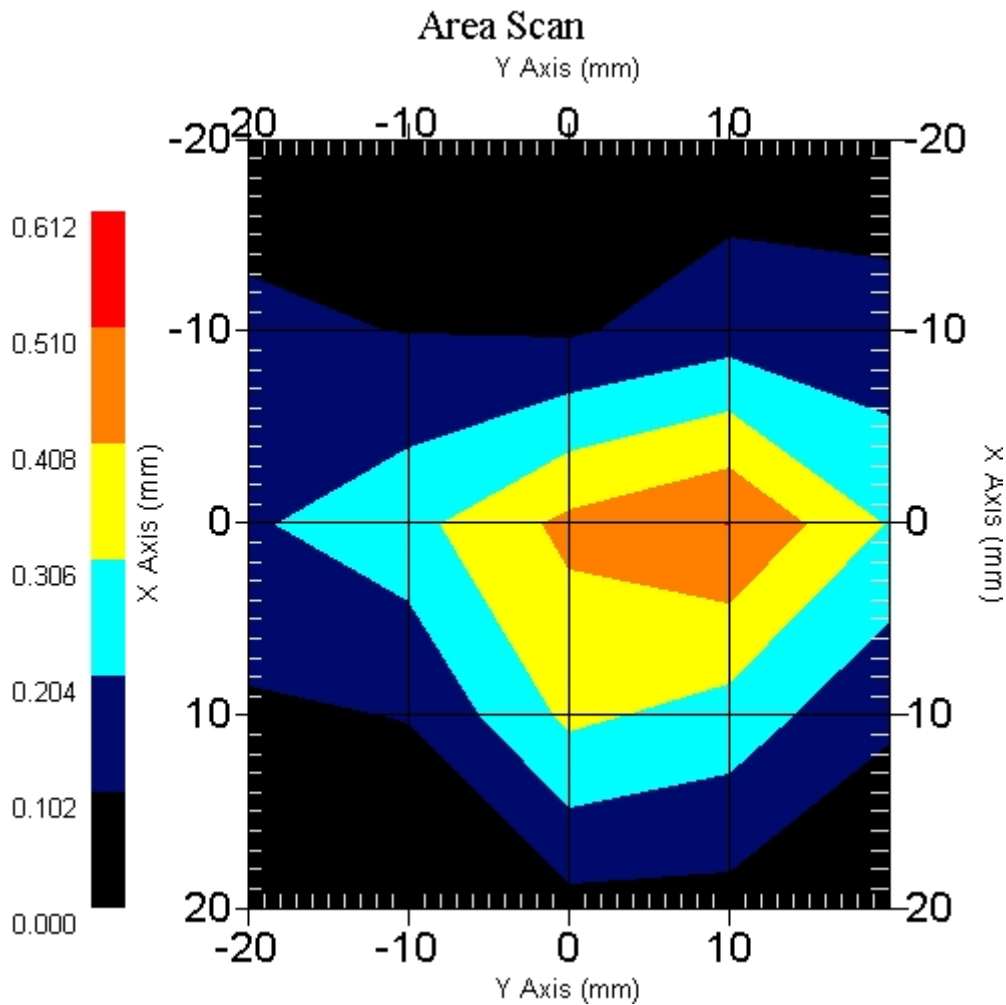


Measurement Data

Crest Factor : 1  
 Scan Type : Complete  
 Tissue Temp. : 20.00 °C  
 Ambient Temp. : 22.00 °C  
 Set-up Date : 22-Mar-2006  
 Set-up Time : 11:11:39 AM  
 Area Scan : 5x5x1 : Measurement x=10mm, y=10mm, z=4mm  
 Zoom Scan : 5x5x8 : Measurement x=8mm, y=8mm, z=4mm

Other Data

DUT Position : End  
 Separation : 0  
 Channel : Mid - 6



1 gram SAR value : 0.429 W/kg  
 10 gram SAR value : 0.197 W/kg  
 Area Scan Peak SAR : 0.511 W/kg  
 Zoom Scan Peak SAR : 0.970 W/kg

## SAR Test Report

By Operator : Jay  
Measurement Date : 22-Mar-2006  
Starting Time : 22-Mar-2006 02:28:30 PM  
End Time : 22-Mar-2006 02:41:39 PM  
Scanning Time : 789 secs

### Product Data

Device Name : Motion Computing  
Serial No. : 20302464  
Type : Other  
Model : TS01  
Frequency : 2450.00 MHz  
Max. Transmit Pwr : 0.065 W  
Drift Time : 0 min(s)  
Length : 228 mm  
Width : 170 mm  
Depth : 23 mm  
Antenna Type : Internal - Aux  
Orientation : End  
Power Drift-Start : 0.402 W/kg  
Power Drift-Finish: 0.379 W/kg  
Power Drift (%) : -5.706

### Phantom Data

Name : APREL-Uni  
Type : Uni-Phantom  
Size (mm) : 280 x 280 x 200  
Serial No. : System Default  
Location : Center  
Description : Uni-Phantom

### Tissue Data

Type : BODY  
Serial No. : 2450  
Frequency : 2450.00 MHz  
Last Calib. Date : 22-Mar-2006  
Temperature : 20.00 °C  
Ambient Temp. : 22.00 °C  
Humidity : 45.00 RH%  
Epsilon : 53.11 F/m  
Sigma : 1.97 S/m  
Density : 1000.00 kg/cu. m

### Probe Data

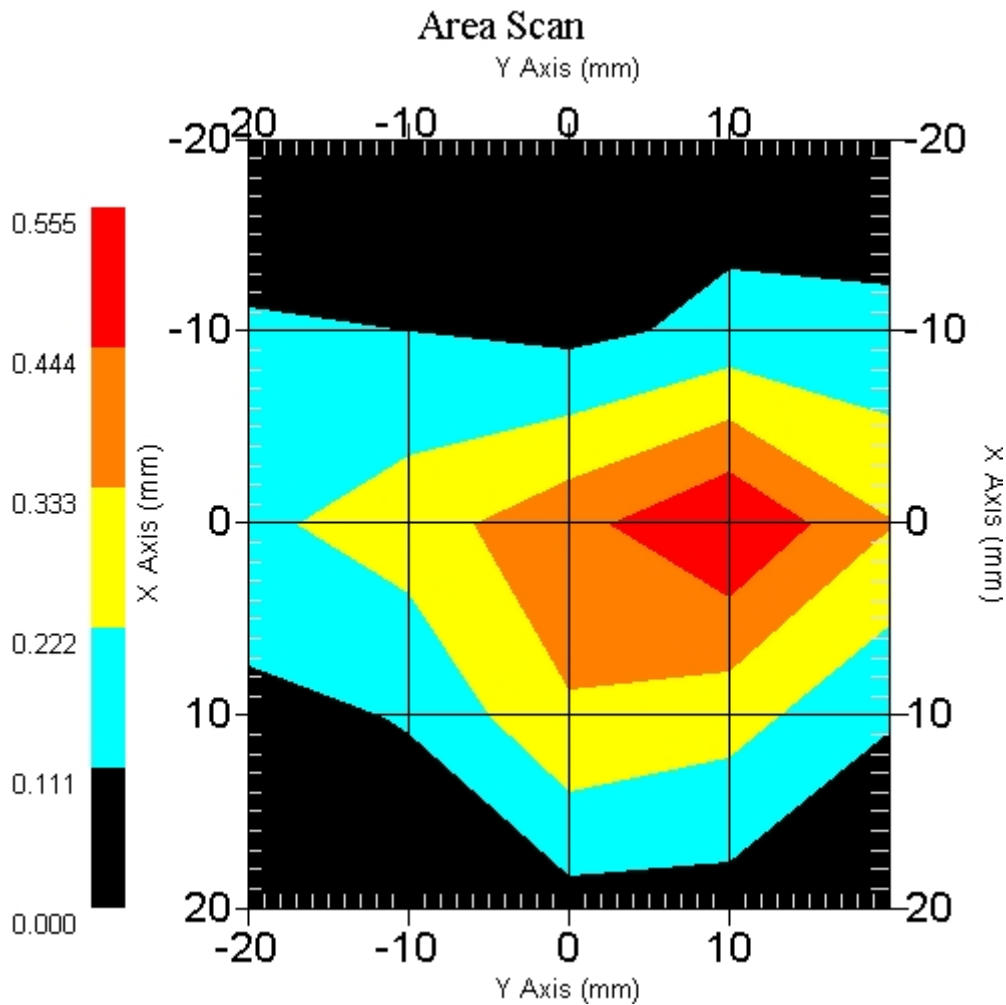
Name : Probe 215 - RFEL  
Model : E020  
Type : E-Field Triangle  
Serial No. : 215  
Last Calib. Date : 10-Jun-2005  
Frequency : 2450.00 MHz  
Duty Cycle Factor: 1  
Conversion Factor: 4.6  
Probe Sensitivity: 1.20 1.20 1.20  $\mu\text{V}/(\text{V}/\text{m})^2$   
Compression Point: 95.00 mV  
Offset : 1.56 mm

Measurement Data

Crest Factor : 1  
 Scan Type : Complete  
 Tissue Temp. : 20.00 °C  
 Ambient Temp. : 22.00 °C  
 Set-up Date : 22-Mar-2006  
 Set-up Time : 11:11:39 AM  
 Area Scan : 5x5x1 : Measurement x=10mm, y=10mm, z=4mm  
 Zoom Scan : 5x5x8 : Measurement x=8mm, y=8mm, z=4mm

Other Data

DUT Position : End  
 Separation : 0  
 Channel : High - 11



1 gram SAR value : 0.422 W/kg  
 10 gram SAR value : 0.190 W/kg  
 Area Scan Peak SAR : 0.554 W/kg  
 Zoom Scan Peak SAR : 0.980 W/kg

## SAR Test Report

By Operator : Jay  
Measurement Date : 23-Mar-2006  
Starting Time : 23-Mar-2006 12:06:46 PM  
End Time : 23-Mar-2006 12:27:47 PM  
Scanning Time : 1261 secs

### Product Data

Device Name : Motion Computing  
Serial No. : 20302464  
Type : Other  
Model : TS01  
Frequency : 2450.00 MHz  
Max. Transmit Pwr : 0.065 W  
Drift Time : 0 min(s)  
Length : 228 mm  
Width : 170 mm  
Depth : 23 mm  
Antenna Type : Internal - Main  
Orientation : Back  
Power Drift-Start : 0.140 W/kg  
Power Drift-Finish: 0.133 W/kg  
Power Drift (%) : -5.000

### Phantom Data

Name : APREL-Uni  
Type : Uni-Phantom  
Size (mm) : 280 x 280 x 200  
Serial No. : System Default  
Location : Center  
Description : Uni-Phantom

### Tissue Data

Type : BODY  
Serial No. : 2450  
Frequency : 2450.00 MHz  
Last Calib. Date : 23-Mar-2006  
Temperature : 20.00 °C  
Ambient Temp. : 22.00 °C  
Humidity : 45.00 RH%  
Epsilon : 51.44 F/m  
Sigma : 1.94 S/m  
Density : 1000.00 kg/cu. m

### Probe Data

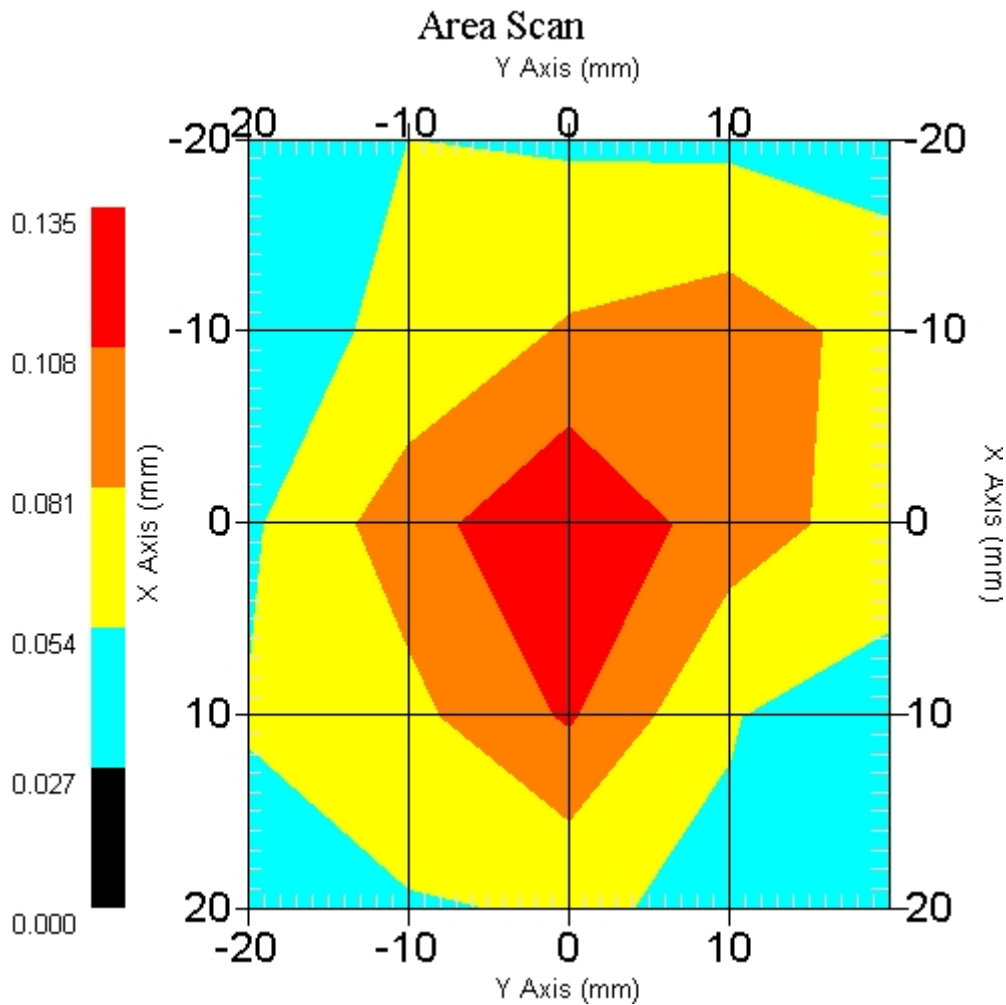
Name : Probe 215 - RFEL  
Model : E020  
Type : E-Field Triangle  
Serial No. : 215  
Last Calib. Date : 10-Jun-2005  
Frequency : 2450.00 MHz  
Duty Cycle Factor: 1  
Conversion Factor: 4.6  
Probe Sensitivity: 1.20 1.20 1.20  $\mu\text{V}/(\text{V}/\text{m})^2$   
Compression Point: 95.00 mV  
Offset : 1.56 mm

Measurement Data

Crest Factor : 1  
 Scan Type : Complete  
 Tissue Temp. : 20.00 °C  
 Ambient Temp. : 22.00 °C  
 Set-up Date : 23-Mar-2006  
 Set-up Time : 10:15:16 AM  
 Area Scan : 5x5x1 : Measurement x=10mm, y=10mm, z=4mm  
 Zoom Scan : 5x5x8 : Measurement x=8mm, y=8mm, z=4mm

Other Data

DUT Position : Back  
 Separation : 0  
 Channel : Mid - 6



1 gram SAR value : 0.116 W/kg  
 10 gram SAR value : 0.072 W/kg  
 Area Scan Peak SAR : 0.133 W/kg  
 Zoom Scan Peak SAR : 0.200 W/kg

## SAR Test Report

By Operator : Jay  
Measurement Date : 23-Mar-2006  
Starting Time : 23-Mar-2006 03:06:48 PM  
End Time : 23-Mar-2006 03:19:43 PM  
Scanning Time : 775 secs

### Product Data

Device Name : Motion Computing  
Serial No. : 20302464  
Type : Other  
Model : TS01  
Frequency : 2450.00 MHz  
Max. Transmit Pwr : 0.065 W  
Drift Time : 0 min(s)  
Length : 228 mm  
Width : 170 mm  
Depth : 23 mm  
Antenna Type : Internal - Aux  
Orientation : Back  
Power Drift-Start : 0.100 W/kg  
Power Drift-Finish: 0.105 W/kg  
Power Drift (%) : 5.247

### Phantom Data

Name : APREL-Uni  
Type : Uni-Phantom  
Size (mm) : 280 x 280 x 200  
Serial No. : System Default  
Location : Center  
Description : Uni-Phantom

### Tissue Data

Type : BODY  
Serial No. : 2450  
Frequency : 2450.00 MHz  
Last Calib. Date : 23-Mar-2006  
Temperature : 20.00 °C  
Ambient Temp. : 22.00 °C  
Humidity : 45.00 RH%  
Epsilon : 51.44 F/m  
Sigma : 1.94 S/m  
Density : 1000.00 kg/cu. m

### Probe Data

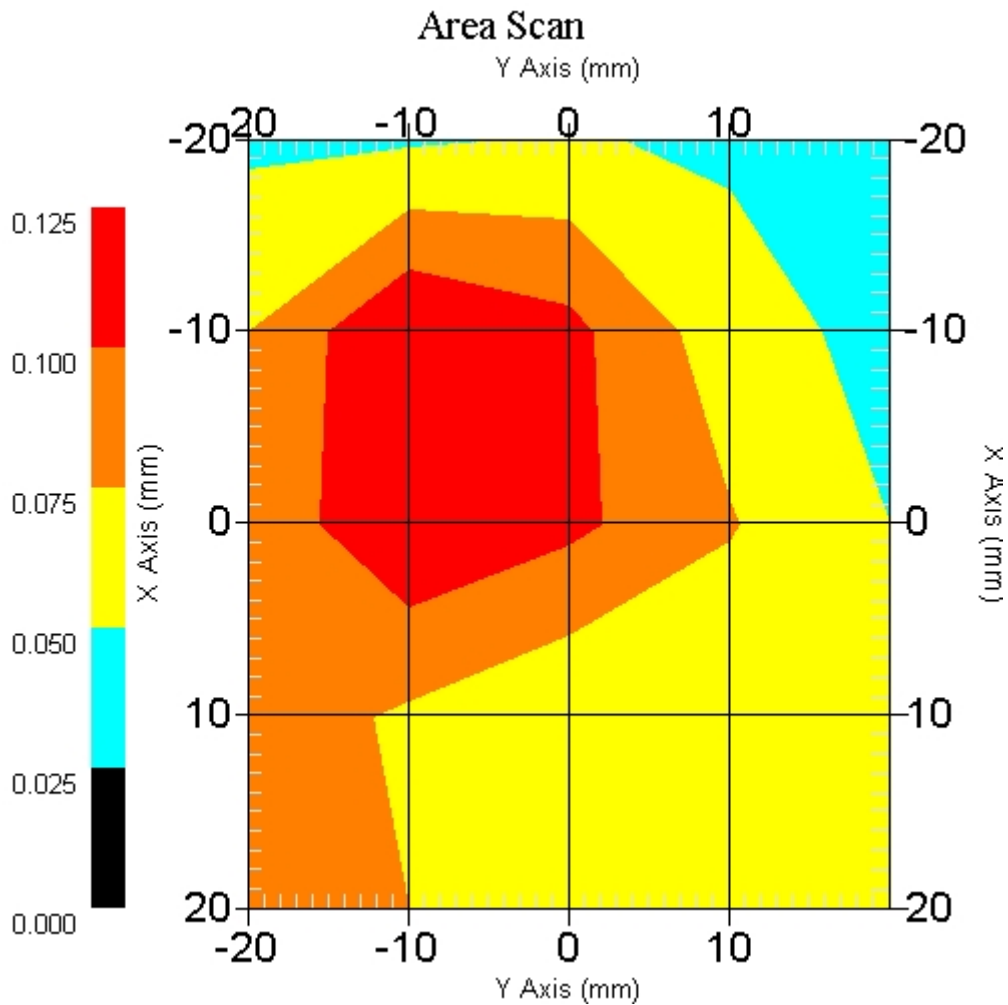
Name : Probe 215 - RFEL  
Model : E020  
Type : E-Field Triangle  
Serial No. : 215  
Last Calib. Date : 10-Jun-2005  
Frequency : 2450.00 MHz  
Duty Cycle Factor: 1  
Conversion Factor: 4.6  
Probe Sensitivity: 1.20 1.20 1.20  $\mu\text{V}/(\text{V}/\text{m})^2$   
Compression Point: 95.00 mV  
Offset : 1.56 mm

Measurement Data

Crest Factor : 1  
 Scan Type : Complete  
 Tissue Temp. : 20.00 °C  
 Ambient Temp. : 22.00 °C  
 Set-up Date : 23-Mar-2006  
 Set-up Time : 1:28:54 PM  
 Area Scan : 5x5x1 : Measurement x=10mm, y=10mm, z=4mm  
 Zoom Scan : 5x5x8 : Measurement x=8mm, y=8mm, z=4mm

Other Data

DUT Position : Back  
 Separation : 0  
 Channel : Low - 1



1 gram SAR value : 0.128 W/kg  
 10 gram SAR value : 0.076 W/kg  
 Area Scan Peak SAR : 0.125 W/kg  
 Zoom Scan Peak SAR : 0.240 W/kg

## SAR Test Report

By Operator : Jay  
Measurement Date : 23-Mar-2006  
Starting Time : 23-Mar-2006 01:29:00 PM  
End Time : 23-Mar-2006 01:41:59 PM  
Scanning Time : 779 secs

### Product Data

Device Name : Motion Computing  
Serial No. : 20302464  
Type : Other  
Model : TS01  
Frequency : 2450.00 MHz  
Max. Transmit Pwr : 0.065 W  
Drift Time : 0 min(s)  
Length : 228 mm  
Width : 170 mm  
Depth : 23 mm  
Antenna Type : Internal - Main  
Orientation : Front  
Power Drift-Start : 0.169 W/kg  
Power Drift-Finish: 0.175 W/kg  
Power Drift (%) : 3.928

### Phantom Data

Name : APREL-Uni  
Type : Uni-Phantom  
Size (mm) : 280 x 280 x 200  
Serial No. : System Default  
Location : Center  
Description : Uni-Phantom

### Tissue Data

Type : BODY  
Serial No. : 2450  
Frequency : 2450.00 MHz  
Last Calib. Date : 23-Mar-2006  
Temperature : 20.00 °C  
Ambient Temp. : 22.00 °C  
Humidity : 45.00 RH%  
Epsilon : 51.44 F/m  
Sigma : 1.94 S/m  
Density : 1000.00 kg/cu. m

### Probe Data

Name : Probe 215 - RFEL  
Model : E020  
Type : E-Field Triangle  
Serial No. : 215  
Last Calib. Date : 10-Jun-2005  
Frequency : 2450.00 MHz  
Duty Cycle Factor: 1  
Conversion Factor: 4.6  
Probe Sensitivity: 1.20 1.20 1.20  $\mu\text{V}/(\text{V}/\text{m})^2$   
Compression Point: 95.00 mV  
Offset : 1.56 mm

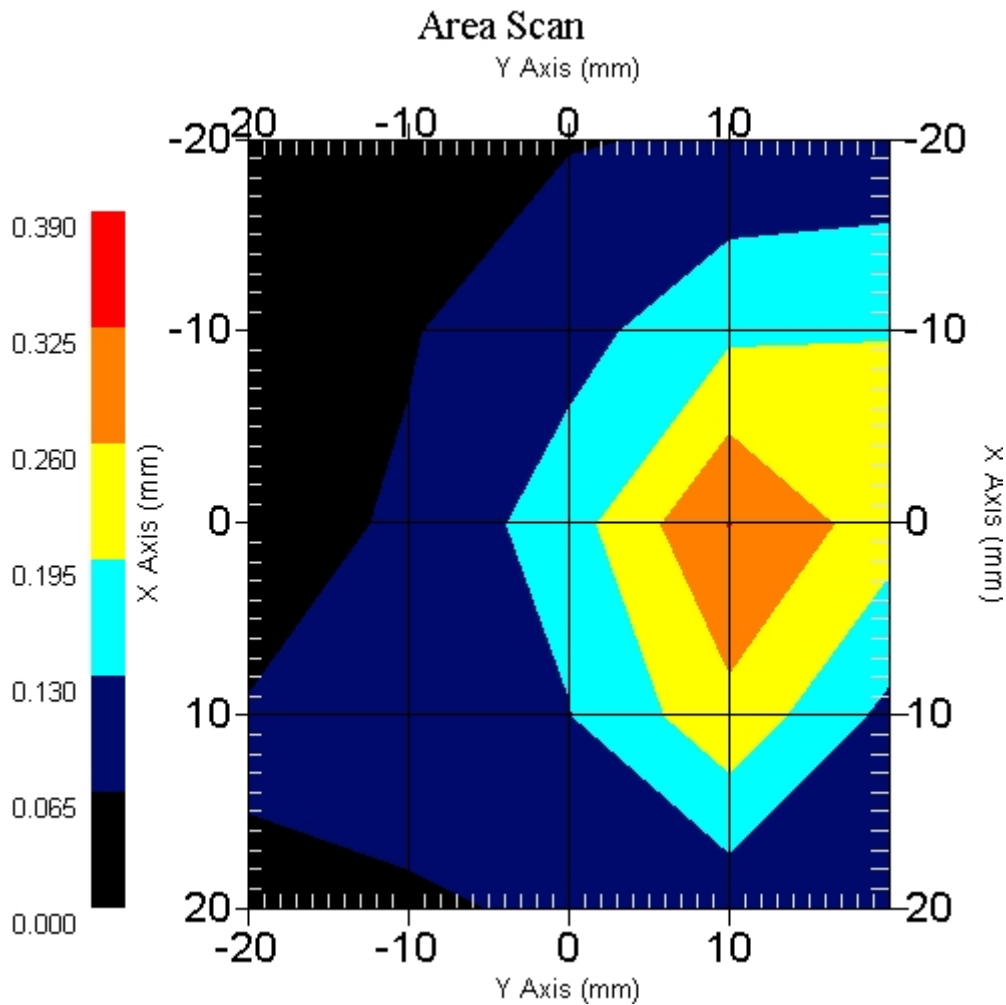


Measurement Data

Crest Factor : 1  
 Scan Type : Complete  
 Tissue Temp. : 20.00 °C  
 Ambient Temp. : 22.00 °C  
 Set-up Date : 23-Mar-2006  
 Set-up Time : 1:28:54 PM  
 Area Scan : 5x5x1 : Measurement x=10mm, y=10mm, z=4mm  
 Zoom Scan : 5x5x8 : Measurement x=8mm, y=8mm, z=4mm

Other Data

DUT Position : Front  
 Separation : 0  
 Channel : Mid - 6



1 gram SAR value : 0.295 W/kg  
 10 gram SAR value : 0.147 W/kg  
 Area Scan Peak SAR : 0.327 W/kg  
 Zoom Scan Peak SAR : 0.600 W/kg

## SAR Test Report

By Operator : Jay  
Measurement Date : 23-Mar-2006  
Starting Time : 23-Mar-2006 02:49:36 PM  
End Time : 23-Mar-2006 03:02:42 PM  
Scanning Time : 786 secs

### Product Data

Device Name : Motion Computing  
Serial No. : 20302464  
Type : Other  
Model : TS01  
Frequency : 2450.00 MHz  
Max. Transmit Pwr : 0.065 W  
Drift Time : 0 min(s)  
Length : 228 mm  
Width : 170 mm  
Depth : 23 mm  
Antenna Type : Internal - Aux  
Orientation : Touch  
Power Drift-Start : 0.118 W/kg  
Power Drift-Finish: 0.111 W/kg  
Power Drift (%) : -5.932

### Phantom Data

Name : APREL-Uni  
Type : Uni-Phantom  
Size (mm) : 280 x 280 x 200  
Serial No. : System Default  
Location : Center  
Description : Uni-Phantom

### Tissue Data

Type : BODY  
Serial No. : 2450  
Frequency : 2450.00 MHz  
Last Calib. Date : 23-Mar-2006  
Temperature : 20.00 °C  
Ambient Temp. : 22.00 °C  
Humidity : 45.00 RH%  
Epsilon : 51.44 F/m  
Sigma : 1.94 S/m  
Density : 1000.00 kg/cu. m

### Probe Data

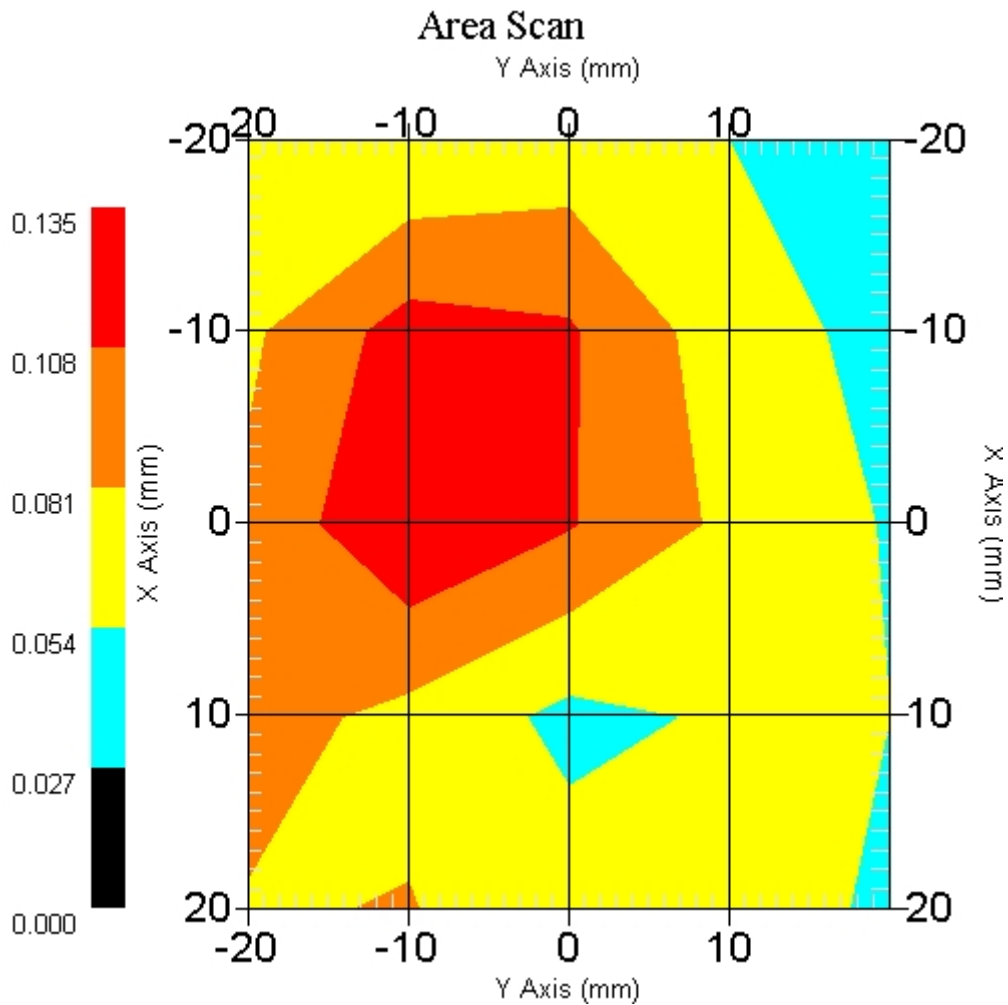
Name : Probe 215 - RFEL  
Model : E020  
Type : E-Field Triangle  
Serial No. : 215  
Last Calib. Date : 10-Jun-2005  
Frequency : 2450.00 MHz  
Duty Cycle Factor: 1  
Conversion Factor: 4.6  
Probe Sensitivity: 1.20 1.20 1.20  $\mu\text{V}/(\text{V}/\text{m})^2$   
Compression Point: 95.00 mV  
Offset : 1.56 mm

Measurement Data

Crest Factor : 1  
 Scan Type : Complete  
 Tissue Temp. : 20.00 °C  
 Ambient Temp. : 22.00 °C  
 Set-up Date : 23-Mar-2006  
 Set-up Time : 1:28:54 PM  
 Area Scan : 5x5x1 : Measurement x=10mm, y=10mm, z=4mm  
 Zoom Scan : 5x5x8 : Measurement x=8mm, y=8mm, z=4mm

Other Data

DUT Position : Front  
 Separation : 0  
 Channel : Low - 1



1 gram SAR value : 0.119 W/kg  
 10 gram SAR value : 0.074 W/kg  
 Area Scan Peak SAR : 0.134 W/kg  
 Zoom Scan Peak SAR : 0.200 W/kg

## SAR Test Report

By Operator : Jay  
Measurement Date : 23-Mar-2006  
Starting Time : 23-Mar-2006 11:47:27 AM  
End Time : 23-Mar-2006 12:00:51 PM  
Scanning Time : 804 secs

### Product Data

Device Name : Motion Computing  
Serial No. : 20302464  
Type : Other  
Model : TS01  
Frequency : 2450.00 MHz  
Max. Transmit Pwr : 0.065 W  
Drift Time : 0 min(s)  
Length : 228 mm  
Width : 170 mm  
Depth : 23 mm  
Antenna Type : Internal - Main  
Orientation : End  
Power Drift-Start : 0.092 W/kg  
Power Drift-Finish: 0.090 W/kg  
Power Drift (%) : -2.537

### Phantom Data

Name : APREL-Uni  
Type : Uni-Phantom  
Size (mm) : 280 x 280 x 200  
Serial No. : System Default  
Location : Center  
Description : Uni-Phantom

### Tissue Data

Type : BODY  
Serial No. : 2450  
Frequency : 2450.00 MHz  
Last Calib. Date : 23-Mar-2006  
Temperature : 20.00 °C  
Ambient Temp. : 22.00 °C  
Humidity : 45.00 RH%  
Epsilon : 51.44 F/m  
Sigma : 1.94 S/m  
Density : 1000.00 kg/cu. m

### Probe Data

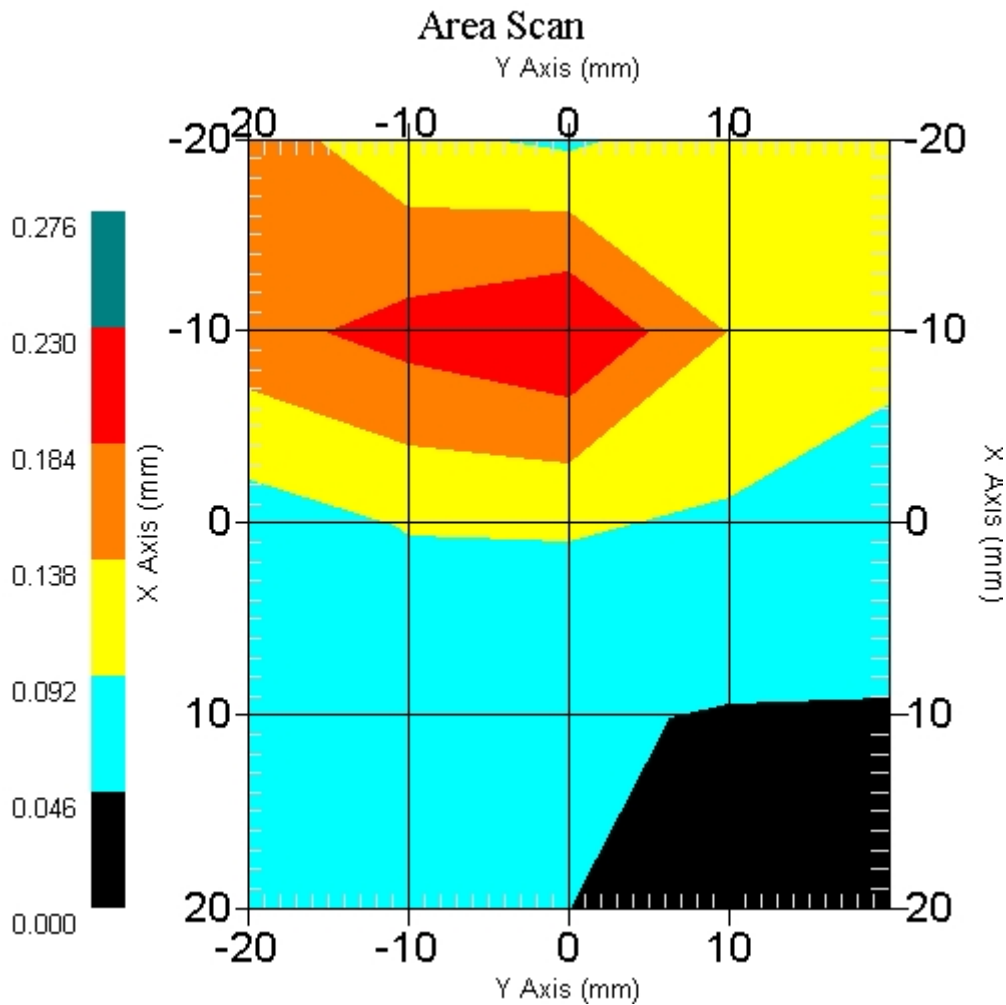
Name : Probe 215 - RFEL  
Model : E020  
Type : E-Field Triangle  
Serial No. : 215  
Last Calib. Date : 10-Jun-2005  
Frequency : 2450.00 MHz  
Duty Cycle Factor: 1  
Conversion Factor: 4.6  
Probe Sensitivity: 1.20 1.20 1.20  $\mu\text{V}/(\text{V}/\text{m})^2$   
Compression Point: 95.00 mV  
Offset : 1.56 mm

Measurement Data

Crest Factor : 1  
 Scan Type : Complete  
 Tissue Temp. : 20.00 °C  
 Ambient Temp. : 22.00 °C  
 Set-up Date : 23-Mar-2006  
 Set-up Time : 10:15:16 AM  
 Area Scan : 5x5x1 : Measurement x=10mm, y=10mm, z=4mm  
 Zoom Scan : 5x5x8 : Measurement x=8mm, y=8mm, z=4mm

Other Data

DUT Position : End  
 Separation : 0  
 Channel : Mid - 6



1 gram SAR value : 0.172 W/kg  
 10 gram SAR value : 0.100 W/kg  
 Area Scan Peak SAR : 0.230 W/kg  
 Zoom Scan Peak SAR : 0.330 W/kg

## SAR Test Report

By Operator : Jay  
Measurement Date : 22-Mar-2006  
Starting Time : 22-Mar-2006 03:40:18 PM  
End Time : 22-Mar-2006 03:53:31 PM  
Scanning Time : 793 secs

### Product Data

Device Name : Motion Computing  
Serial No. : 20302464  
Type : Other  
Model : TS01  
Frequency : 2450.00 MHz  
Max. Transmit Pwr : 0.065 W  
Drift Time : 0 min(s)  
Length : 228 mm  
Width : 170 mm  
Depth : 23 mm  
Antenna Type : Internal - Aux  
Orientation : End  
Power Drift-Start : 0.450 W/kg  
Power Drift-Finish: 0.431 W/kg  
Power Drift (%) : -4.309

### Phantom Data

Name : APREL-Uni  
Type : Uni-Phantom  
Size (mm) : 280 x 280 x 200  
Serial No. : System Default  
Location : Center  
Description : Uni-Phantom

### Tissue Data

Type : BODY  
Serial No. : 2450  
Frequency : 2450.00 MHz  
Last Calib. Date : 22-Mar-2006  
Temperature : 20.00 °C  
Ambient Temp. : 22.00 °C  
Humidity : 45.00 RH%  
Epsilon : 53.11 F/m  
Sigma : 1.97 S/m  
Density : 1000.00 kg/cu. m

### Probe Data

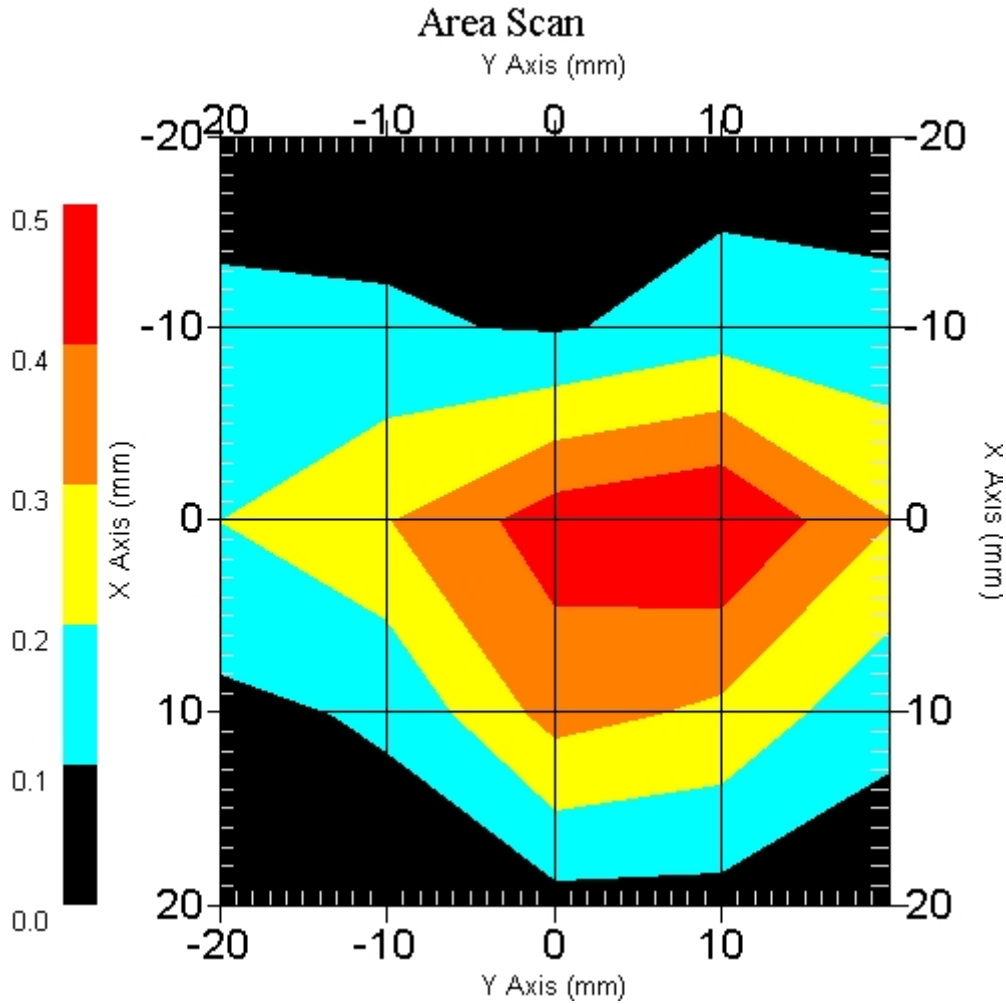
Name : Probe 215 - RFEL  
Model : E020  
Type : E-Field Triangle  
Serial No. : 215  
Last Calib. Date : 10-Jun-2005  
Frequency : 2450.00 MHz  
Duty Cycle Factor: 1  
Conversion Factor: 4.6  
Probe Sensitivity: 1.20 1.20 1.20  $\mu\text{V}/(\text{V}/\text{m})^2$   
Compression Point: 95.00 mV  
Offset : 1.56 mm

Measurement Data

Crest Factor : 1  
 Scan Type : Complete  
 Tissue Temp. : 20.00 °C  
 Ambient Temp. : 22.00 °C  
 Set-up Date : 22-Mar-2006  
 Set-up Time : 11:11:39 AM  
 Area Scan : 5x5x1 : Measurement x=10mm, y=10mm, z=4mm  
 Zoom Scan : 5x5x8 : Measurement x=8mm, y=8mm, z=4mm

Other Data

DUT Position : End  
 Separation : 0  
 Channel : Low - 1



1 gram SAR value : 0.414 W/kg  
 10 gram SAR value : 0.198 W/kg  
 Area Scan Peak SAR : 0.499 W/kg  
 Zoom Scan Peak SAR : 0.880 W/kg

## SAR Test Report

By Operator : Jay  
Measurement Date : 13-Mar-2006  
Starting Time : 13-Mar-2006 03:24:13 PM  
End Time : 13-Mar-2006 03:37:10 PM  
Scanning Time : 777 secs

### Product Data

Device Name : Motion Computing  
Serial No. : 20302464  
Type : Other  
Model : TS01  
Frequency : 5200.00 MHz  
Max. Transmit Pwr : 0.025 W  
Drift Time : 0 min(s)  
Length : 228 mm  
Width : 170 mm  
Depth : 23 mm  
Antenna Type : Internal - Main  
Orientation : End  
Power Drift-Start : 0.964 W/kg  
Power Drift-Finish: 0.926 W/kg  
Power Drift (%) : -3.859

### Phantom Data

Name : APREL-Uni  
Type : Uni-Phantom  
Size (mm) : 280 x 280 x 200  
Serial No. : System Default  
Location : Center  
Description : Uni-Phantom

### Tissue Data

Type : BODY  
Serial No. : 5200  
Frequency : 5200.00 MHz  
Last Calib. Date : 13-Mar-2006  
Temperature : 20.00 °C  
Ambient Temp. : 22.00 °C  
Humidity : 42.00 RH%  
Epsilon : 47.80 F/m  
Sigma : 5.39 S/m  
Density : 1000.00 kg/cu. m

### Probe Data

Name : Probe 215 - RFEL  
Model : E020  
Type : E-Field Triangle  
Serial No. : 215  
Last Calib. Date : 10-Jun-2005  
Frequency : 5200.00 MHz  
Duty Cycle Factor: 1  
Conversion Factor: 2.8  
Probe Sensitivity: 1.20 1.20 1.20  $\mu\text{V}/(\text{V}/\text{m})^2$   
Compression Point: 95.00 mV  
Offset : 1.56 mm

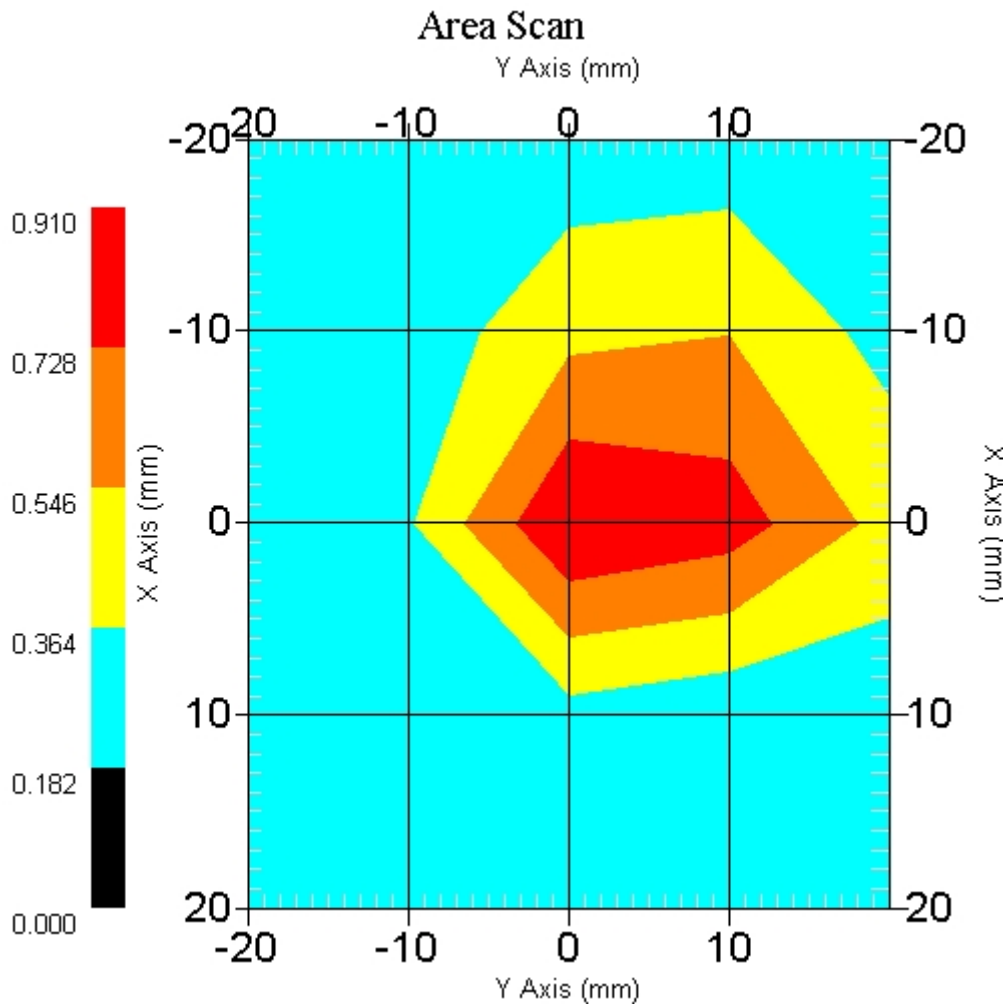


Measurement Data

Crest Factor : 1  
 Scan Type : Complete  
 Tissue Temp. : 20.00 °C  
 Ambient Temp. : 22.00 °C  
 Set-up Date : 13-Mar-2006  
 Set-up Time : 5:06:13 PM  
 Area Scan : 5x5x1 : Measurement x=10mm, y=10mm, z=4mm  
 Zoom Scan : 5x5x8 : Measurement x=8mm, y=8mm, z=4mm

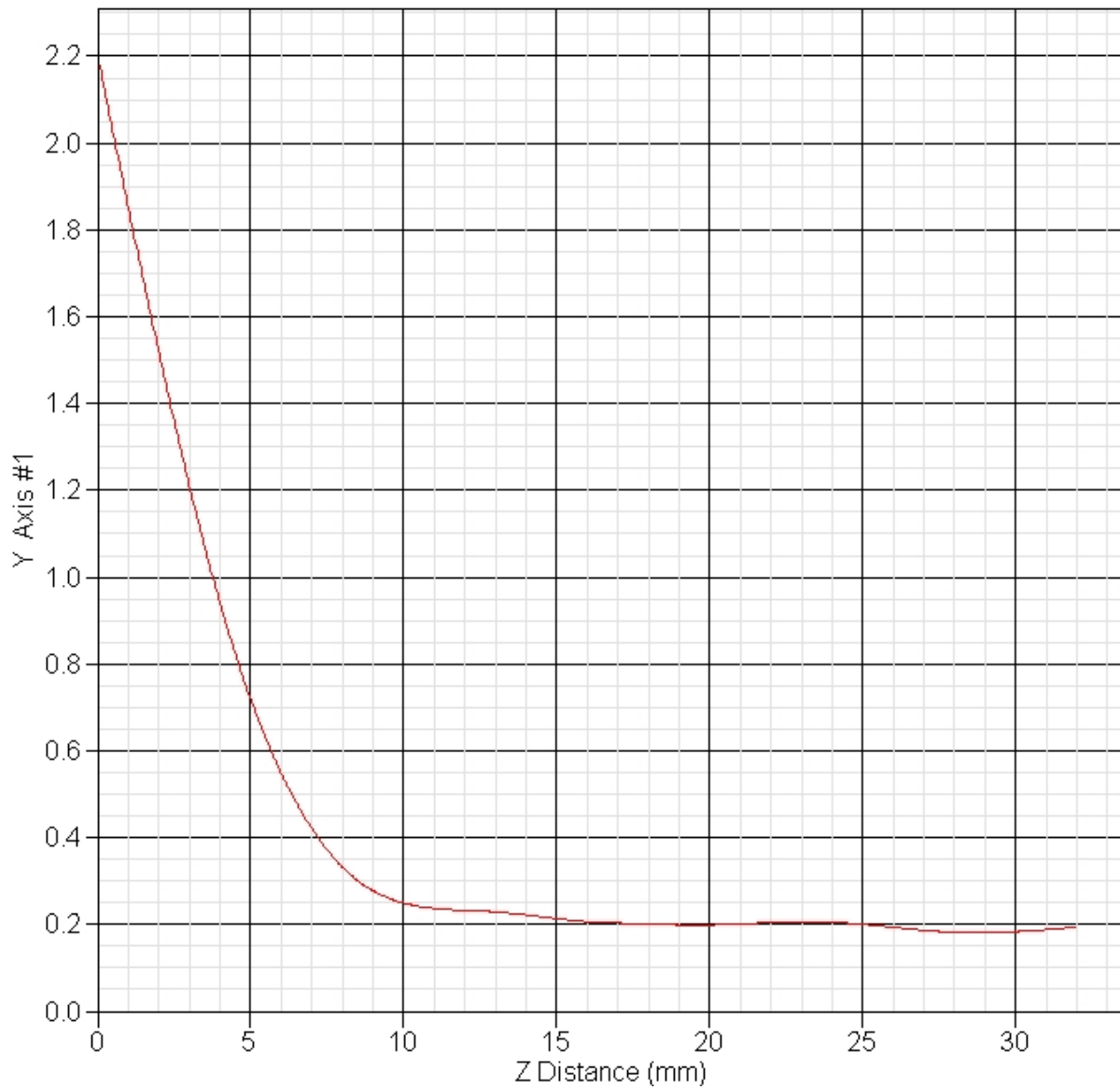
Other Data

DUT Position : End  
 Separation : 0  
 Channel : Low - 36



1 gram SAR value : 0.790 W/kg  
 10 gram SAR value : 0.380 W/kg  
 Area Scan Peak SAR : 0.908 W/kg  
 Zoom Scan Peak SAR : 2.201 W/kg

SAR-Z Axis  
at Hotspot x:0.40 y:-0.30



## SAR Test Report

By Operator : Jay  
Measurement Date : 13-Mar-2006  
Starting Time : 13-Mar-2006 03:38:45 PM  
End Time : 13-Mar-2006 03:51:49 PM  
Scanning Time : 784 secs

### Product Data

Device Name : Motion Computing  
Serial No. : 20302464  
Type : Other  
Model : TS01  
Frequency : 5200.00 MHz  
Max. Transmit Pwr : 0.025 W  
Drift Time : 0 min(s)  
Length : 228 mm  
Width : 170 mm  
Depth : 23 mm  
Antenna Type : Internal - Main  
Orientation : End  
Power Drift-Start : 0.874 W/kg  
Power Drift-Finish: 0.844 W/kg  
Power Drift (%) : -3.433

### Phantom Data

Name : APREL-Uni  
Type : Uni-Phantom  
Size (mm) : 280 x 280 x 200  
Serial No. : System Default  
Location : Center  
Description : Uni-Phantom

### Tissue Data

Type : BODY  
Serial No. : 5200  
Frequency : 5200.00 MHz  
Last Calib. Date : 13-Mar-2006  
Temperature : 20.00 °C  
Ambient Temp. : 22.00 °C  
Humidity : 42.00 RH%  
Epsilon : 47.80 F/m  
Sigma : 5.39 S/m  
Density : 1000.00 kg/cu. m

### Probe Data

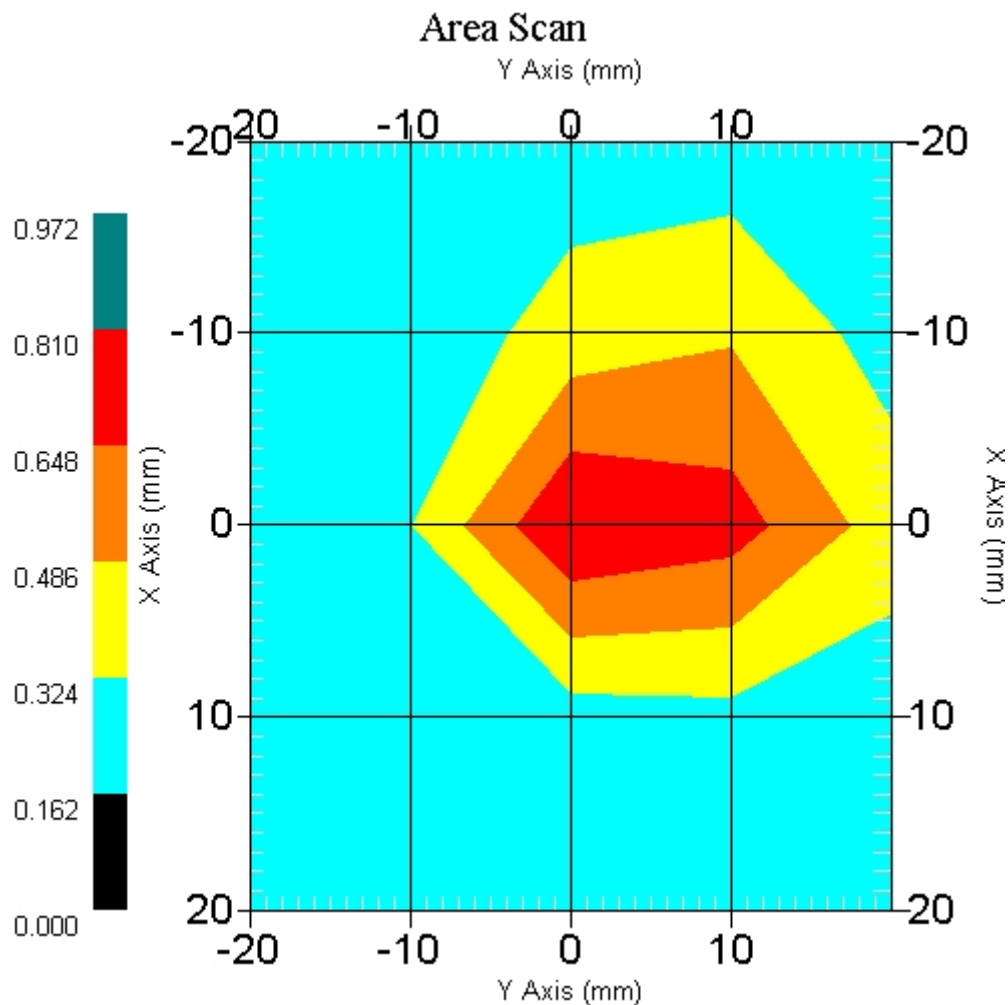
Name : Probe 215 - RFEL  
Model : E020  
Type : E-Field Triangle  
Serial No. : 215  
Last Calib. Date : 10-Jun-2005  
Frequency : 5200.00 MHz  
Duty Cycle Factor: 1  
Conversion Factor: 2.8  
Probe Sensitivity: 1.20 1.20 1.20  $\mu\text{V}/(\text{V}/\text{m})^2$   
Compression Point: 95.00 mV  
Offset : 1.56 mm

Measurement Data

Crest Factor : 1  
 Scan Type : Complete  
 Tissue Temp. : 20.00 °C  
 Ambient Temp. : 22.00 °C  
 Set-up Date : 13-Mar-2006  
 Set-up Time : 5:06:13 PM  
 Area Scan : 5x5x1 : Measurement x=10mm, y=10mm, z=4mm  
 Zoom Scan : 5x5x8 : Measurement x=8mm, y=8mm, z=4mm

Other Data

DUT Position : End  
 Separation : 0  
 Channel : Mid - 42



1 gram SAR value : 0.681 W/kg  
 10 gram SAR value : 0.345 W/kg  
 Area Scan Peak SAR : 0.810 W/kg  
 Zoom Scan Peak SAR : 1.761 W/kg

## SAR Test Report

By Operator : Jay  
Measurement Date : 13-Mar-2006  
Starting Time : 13-Mar-2006 03:53:43 PM  
End Time : 13-Mar-2006 04:06:42 PM  
Scanning Time : 779 secs

### Product Data

Device Name : Motion Computing  
Serial No. : 20302464  
Type : Other  
Model : TS01  
Frequency : 5200.00 MHz  
Max. Transmit Pwr : 0.025 W  
Drift Time : 0 min(s)  
Length : 228 mm  
Width : 170 mm  
Depth : 23 mm  
Antenna Type : Internal - Main  
Orientation : End  
Power Drift-Start : 0.717 W/kg  
Power Drift-Finish: 0.687 W/kg  
Power Drift (%) : -4.184

### Phantom Data

Name : APREL-Uni  
Type : Uni-Phantom  
Size (mm) : 280 x 280 x 200  
Serial No. : System Default  
Location : Center  
Description : Uni-Phantom

### Tissue Data

Type : BODY  
Serial No. : 5200  
Frequency : 5200.00 MHz  
Last Calib. Date : 13-Mar-2006  
Temperature : 20.00 °C  
Ambient Temp. : 22.00 °C  
Humidity : 42.00 RH%  
Epsilon : 47.80 F/m  
Sigma : 5.39 S/m  
Density : 1000.00 kg/cu. m

### Probe Data

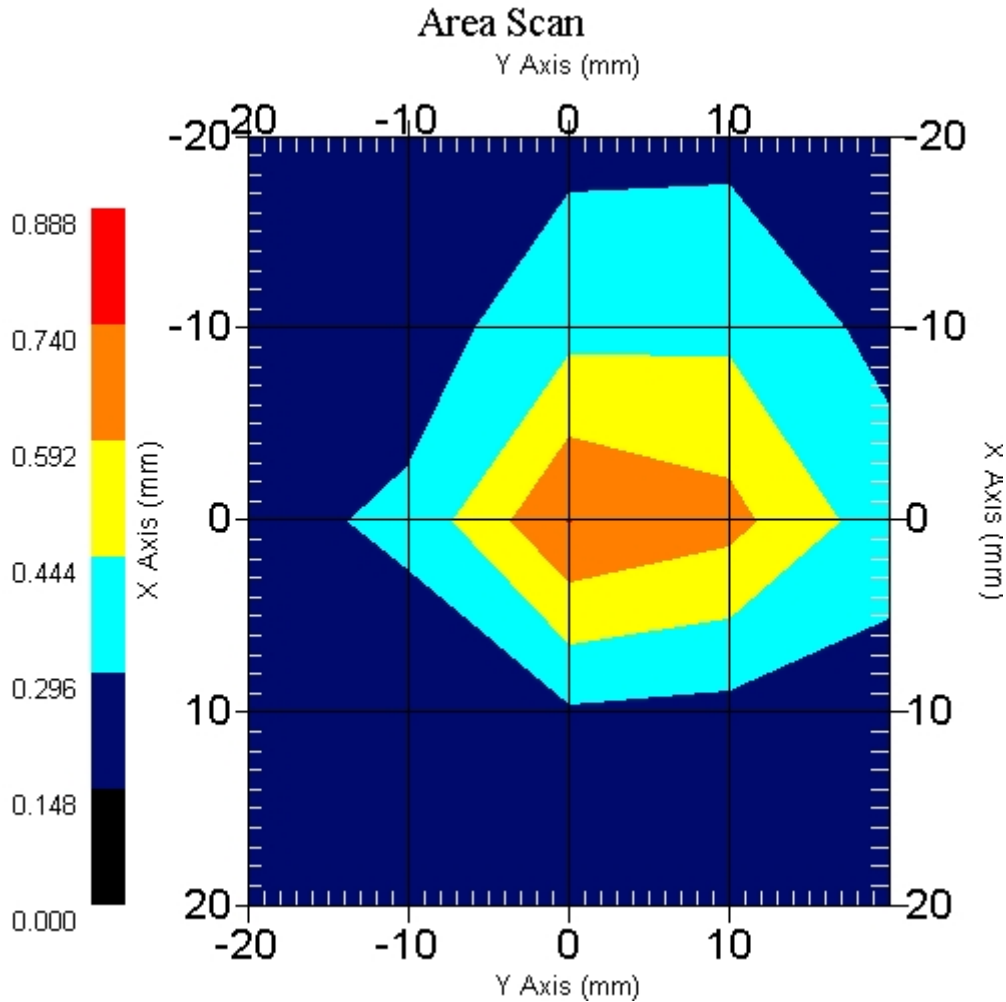
Name : Probe 215 - RFEL  
Model : E020  
Type : E-Field Triangle  
Serial No. : 215  
Last Calib. Date : 10-Jun-2005  
Frequency : 5200.00 MHz  
Duty Cycle Factor: 1  
Conversion Factor: 2.8  
Probe Sensitivity: 1.20 1.20 1.20  $\mu\text{V}/(\text{V}/\text{m})^2$   
Compression Point: 95.00 mV  
Offset : 1.56 mm

Measurement Data

Crest Factor : 1  
 Scan Type : Complete  
 Tissue Temp. : 20.00 °C  
 Ambient Temp. : 22.00 °C  
 Set-up Date : 13-Mar-2006  
 Set-up Time : 5:06:13 PM  
 Area Scan : 5x5x1 : Measurement x=10mm, y=10mm, z=4mm  
 Zoom Scan : 5x5x8 : Measurement x=8mm, y=8mm, z=4mm

Other Data

DUT Position : End  
 Separation : 0  
 Channel : High - 48



1 gram SAR value : 0.518 W/kg  
 10 gram SAR value : 0.301 W/kg  
 Area Scan Peak SAR : 0.742 W/kg  
 Zoom Scan Peak SAR : 1.251 W/kg

## SAR Test Report

By Operator : Jay  
Measurement Date : 13-Mar-2006  
Starting Time : 13-Mar-2006 06:42:20 PM  
End Time : 13-Mar-2006 06:55:25 PM  
Scanning Time : 785 secs

### Product Data

Device Name : Motion Computing  
Serial No. : 20302464  
Type : Other  
Model : TS01  
Frequency : 5200.00 MHz  
Max. Transmit Pwr : 0.025 W  
Drift Time : 0 min(s)  
Length : 228 mm  
Width : 170 mm  
Depth : 23 mm  
Antenna Type : Internal - Aux  
Orientation : End  
Power Drift-Start : 1.427 W/kg  
Power Drift-Finish: 1.489 W/kg  
Power Drift (%) : 4.345

### Phantom Data

Name : APREL-Uni  
Type : Uni-Phantom  
Size (mm) : 280 x 280 x 200  
Serial No. : System Default  
Location : Center  
Description : Uni-Phantom

### Tissue Data

Type : BODY  
Serial No. : 5200  
Frequency : 5200.00 MHz  
Last Calib. Date : 13-Mar-2006  
Temperature : 20.00 °C  
Ambient Temp. : 22.00 °C  
Humidity : 42.00 RH%  
Epsilon : 47.80 F/m  
Sigma : 5.39 S/m  
Density : 1000.00 kg/cu. m

### Probe Data

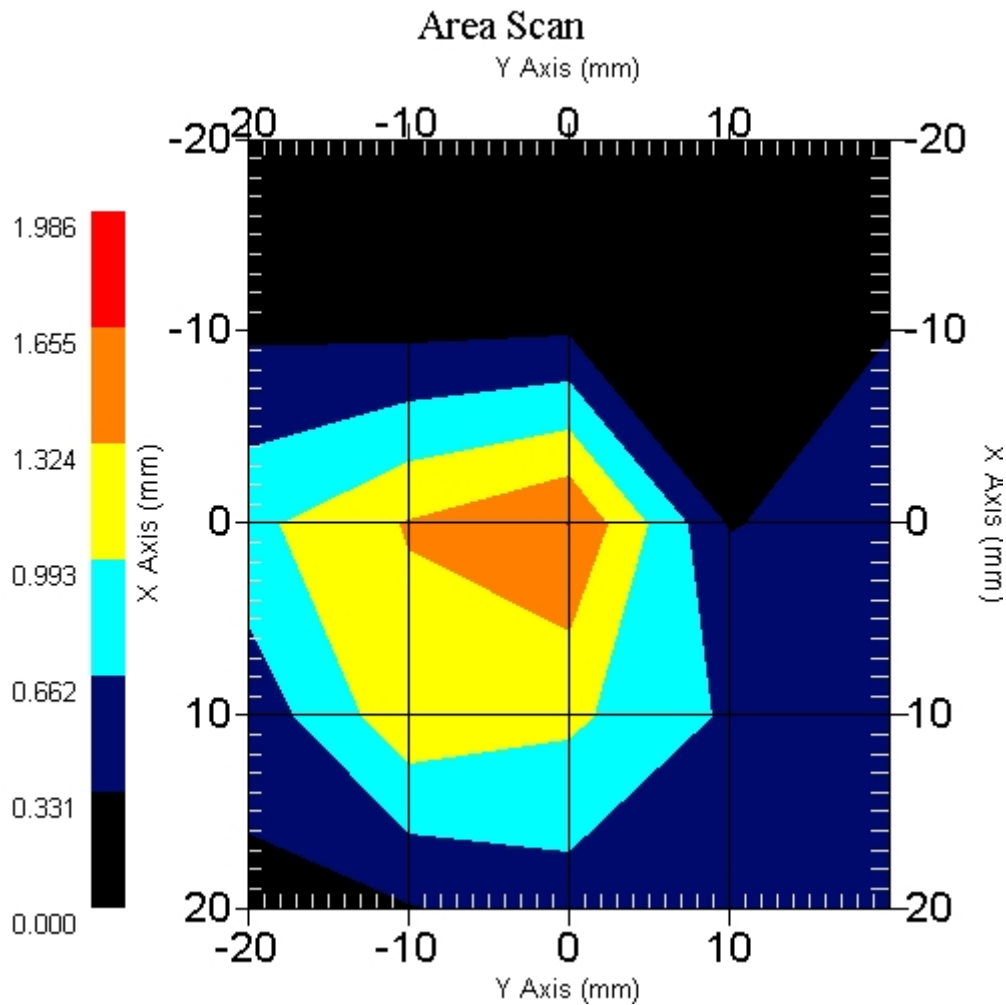
Name : Probe 215 - RFEL  
Model : E020  
Type : E-Field Triangle  
Serial No. : 215  
Last Calib. Date : 10-Jun-2005  
Frequency : 5200.00 MHz  
Duty Cycle Factor: 1  
Conversion Factor: 2.8  
Probe Sensitivity: 1.20 1.20 1.20  $\mu\text{V}/(\text{V}/\text{m})^2$   
Compression Point: 95.00 mV  
Offset : 1.56 mm

Measurement Data

Crest Factor : 1  
 Scan Type : Complete  
 Tissue Temp. : 20.00 °C  
 Ambient Temp. : 22.00 °C  
 Set-up Date : 13-Mar-2006  
 Set-up Time : 5:06:13 PM  
 Area Scan : 5x5x1 : Measurement x=10mm, y=10mm, z=4mm  
 Zoom Scan : 5x5x8 : Measurement x=8mm, y=8mm, z=4mm

Other Data

DUT Position : End  
 Separation : 0  
 Channel : Low - 36



1 gram SAR value : 1.433 W/kg  
 10 gram SAR value : 0.585 W/kg  
 Area Scan Peak SAR : 1.657 W/kg  
 Zoom Scan Peak SAR : 4.383 W/kg



## SAR Test Report

By Operator : Jay  
Measurement Date : 13-Mar-2006  
Starting Time : 13-Mar-2006 06:28:07 PM  
End Time : 13-Mar-2006 06:41:11 PM  
Scanning Time : 784 secs

### Product Data

Device Name : Motion Computing  
Serial No. : 20302464  
Type : Other  
Model : TS01  
Frequency : 5200.00 MHz  
Max. Transmit Pwr : 0.025 W  
Drift Time : 0 min(s)  
Length : 228 mm  
Width : 170 mm  
Depth : 23 mm  
Antenna Type : Internal - Aux  
Orientation : End  
Power Drift-Start : 1.089 W/kg  
Power Drift-Finish: 1.114 W/kg  
Power Drift (%) : 2.296

### Phantom Data

Name : APREL-Uni  
Type : Uni-Phantom  
Size (mm) : 280 x 280 x 200  
Serial No. : System Default  
Location : Center  
Description : Uni-Phantom

### Tissue Data

Type : BODY  
Serial No. : 5200  
Frequency : 5200.00 MHz  
Last Calib. Date : 13-Mar-2006  
Temperature : 20.00 °C  
Ambient Temp. : 22.00 °C  
Humidity : 42.00 RH%  
Epsilon : 47.80 F/m  
Sigma : 5.39 S/m  
Density : 1000.00 kg/cu. m

### Probe Data

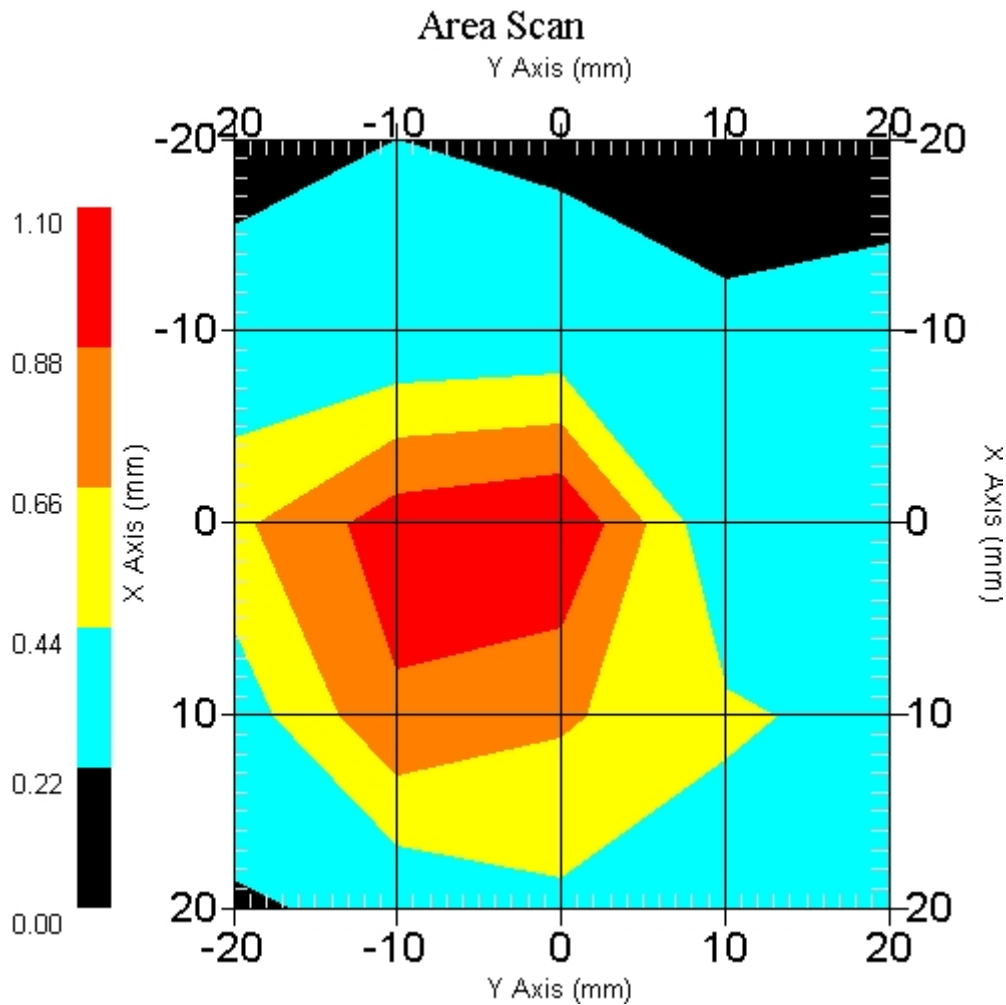
Name : Probe 215 - RFEL  
Model : E020  
Type : E-Field Triangle  
Serial No. : 215  
Last Calib. Date : 10-Jun-2005  
Frequency : 5200.00 MHz  
Duty Cycle Factor: 1  
Conversion Factor: 2.8  
Probe Sensitivity: 1.20 1.20 1.20  $\mu\text{V}/(\text{V}/\text{m})^2$   
Compression Point: 95.00 mV  
Offset : 1.56 mm

Measurement Data

Crest Factor : 1  
 Scan Type : Complete  
 Tissue Temp. : 20.00 °C  
 Ambient Temp. : 22.00 °C  
 Set-up Date : 13-Mar-2006  
 Set-up Time : 5:06:13 PM  
 Area Scan : 5x5x1 : Measurement x=10mm, y=10mm, z=4mm  
 Zoom Scan : 5x5x8 : Measurement x=8mm, y=8mm, z=4mm

Other Data

DUT Position : End  
 Separation : 0  
 Channel : Mid - 42



1 gram SAR value : 0.969 W/kg  
 10 gram SAR value : 0.437 W/kg  
 Area Scan Peak SAR : 1.098 W/kg  
 Zoom Scan Peak SAR : 2.762 W/kg

## SAR Test Report

By Operator : Jay  
Measurement Date : 13-Mar-2006  
Starting Time : 13-Mar-2006 06:04:20 PM  
End Time : 13-Mar-2006 06:25:14 PM  
Scanning Time : 1254 secs

### Product Data

Device Name : Motion Computing  
Serial No. : 20302464  
Type : Other  
Model : TS01  
Frequency : 5200.00 MHz  
Max. Transmit Pwr : 0.025 W  
Drift Time : 0 min(s)  
Length : 228 mm  
Width : 170 mm  
Depth : 23 mm  
Antenna Type : Internal - Aux  
Orientation : End  
Power Drift-Start : 0.834 W/kg  
Power Drift-Finish: 0.874 W/kg  
Power Drift (%) : 4.796

### Phantom Data

Name : APREL-Uni  
Type : Uni-Phantom  
Size (mm) : 280 x 280 x 200  
Serial No. : System Default  
Location : Center  
Description : Uni-Phantom

### Tissue Data

Type : BODY  
Serial No. : 5200  
Frequency : 5200.00 MHz  
Last Calib. Date : 13-Mar-2006  
Temperature : 20.00 °C  
Ambient Temp. : 22.00 °C  
Humidity : 42.00 RH%  
Epsilon : 47.80 F/m  
Sigma : 5.39 S/m  
Density : 1000.00 kg/cu. m

### Probe Data

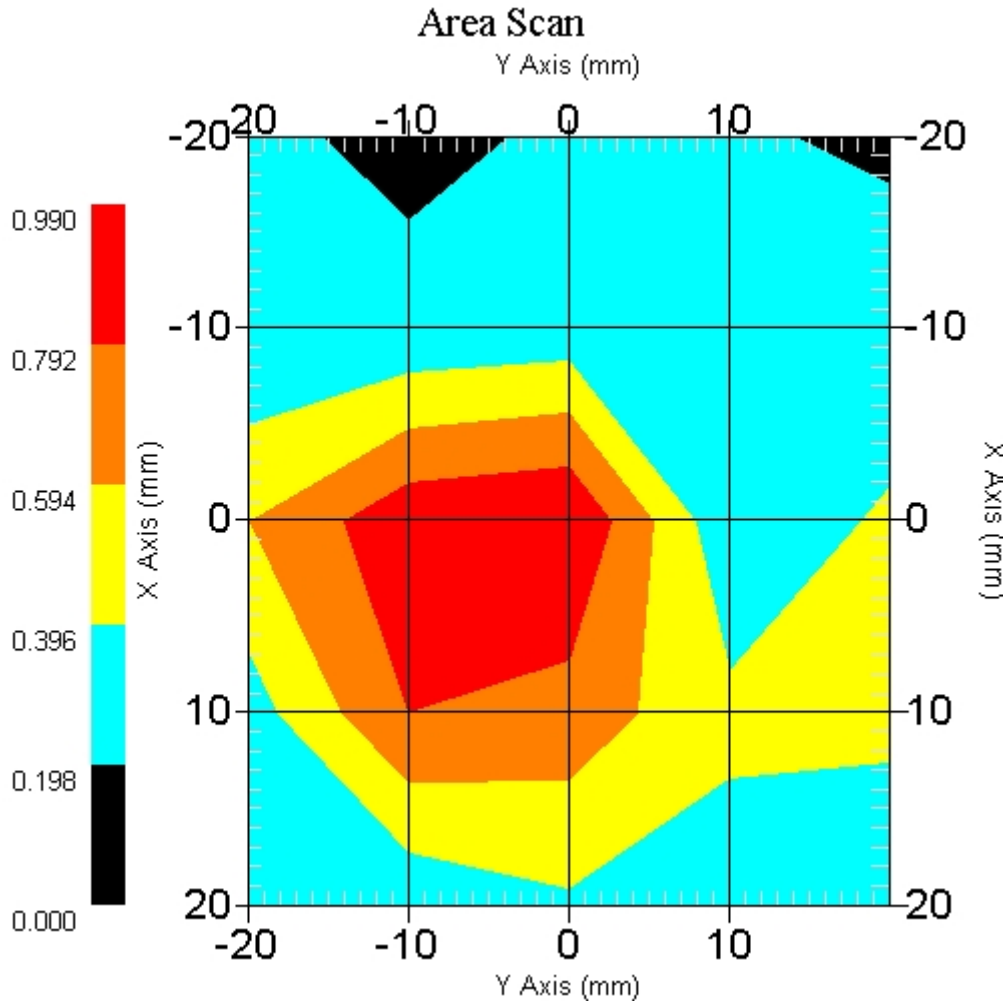
Name : Probe 215 - RFEL  
Model : E020  
Type : E-Field Triangle  
Serial No. : 215  
Last Calib. Date : 10-Jun-2005  
Frequency : 5200.00 MHz  
Duty Cycle Factor: 1  
Conversion Factor: 2.8  
Probe Sensitivity: 1.20 1.20 1.20  $\mu\text{V}/(\text{V}/\text{m})^2$   
Compression Point: 95.00 mV  
Offset : 1.56 mm

Measurement Data

Crest Factor : 1  
 Scan Type : Complete  
 Tissue Temp. : 20.00 °C  
 Ambient Temp. : 22.00 °C  
 Set-up Date : 13-Mar-2006  
 Set-up Time : 5:06:13 PM  
 Area Scan : 5x5x1 : Measurement x=10mm, y=10mm, z=4mm  
 Zoom Scan : 5x5x8 : Measurement x=8mm, y=8mm, z=4mm

Other Data

DUT Position : End  
 Separation : 0  
 Channel : High - 48



1 gram SAR value : 1.398 W/kg  
 10 gram SAR value : 0.773 W/kg  
 Area Scan Peak SAR : 0.989 W/kg  
 Zoom Scan Peak SAR : 3.002 W/kg

## SAR Test Report

By Operator : Jay  
Measurement Date : 14-Mar-2006  
Starting Time : 14-Mar-2006 10:52:02 AM  
End Time : 14-Mar-2006 11:12:41 AM  
Scanning Time : 1239 secs

### Product Data

Device Name : Motion Computing  
Serial No. : 20302464  
Type : Other  
Model : TS01  
Frequency : 5200.00 MHz  
Max. Transmit Pwr : 0.025 W  
Drift Time : 0 min(s)  
Length : 228 mm  
Width : 170 mm  
Depth : 23 mm  
Antenna Type : Internal - Main  
Orientation : Back  
Power Drift-Start : 0.449 W/kg  
Power Drift-Finish: 0.463 W/kg  
Power Drift (%) : 3.118

### Phantom Data

Name : APREL-Uni  
Type : Uni-Phantom  
Size (mm) : 280 x 280 x 200  
Serial No. : System Default  
Location : Center  
Description : Uni-Phantom

### Tissue Data

Type : BODY  
Serial No. : 5200  
Frequency : 5200.00 MHz  
Last Calib. Date : 14-Mar-2006  
Temperature : 20.00 °C  
Ambient Temp. : 22.00 °C  
Humidity : 42.00 RH%  
Epsilon : 48.00 F/m  
Sigma : 5.43 S/m  
Density : 1000.00 kg/cu. m

### Probe Data

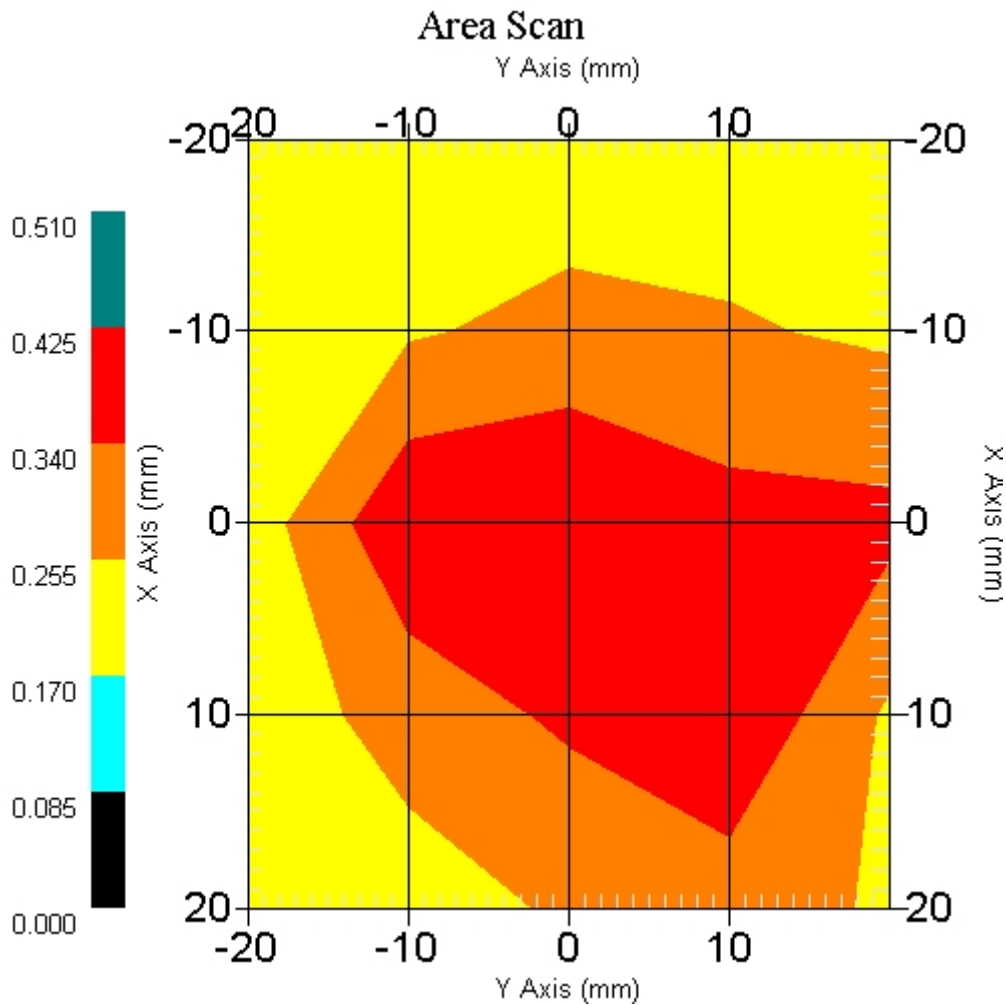
Name : Probe 215 - RFEL  
Model : E020  
Type : E-Field Triangle  
Serial No. : 215  
Last Calib. Date : 10-Jun-2005  
Frequency : 5200.00 MHz  
Duty Cycle Factor: 1  
Conversion Factor: 2.8  
Probe Sensitivity: 1.20 1.20 1.20  $\mu\text{V}/(\text{V}/\text{m})^2$   
Compression Point: 95.00 mV  
Offset : 1.56 mm

Measurement Data

Crest Factor : 1  
 Scan Type : Complete  
 Tissue Temp. : 20.00 °C  
 Ambient Temp. : 22.00 °C  
 Set-up Date : 14-Mar-2006  
 Set-up Time : 5:06:13 PM  
 Area Scan : 5x5x1 : Measurement x=10mm, y=10mm, z=4mm  
 Zoom Scan : 5x5x8 : Measurement x=8mm, y=8mm, z=4mm

Other Data

DUT Position : Back  
 Separation : 0  
 Channel : Low - 36



1 gram SAR value : 0.501 W/kg  
 10 gram SAR value : 0.314 W/kg  
 Area Scan Peak SAR : 0.425 W/kg  
 Zoom Scan Peak SAR : 1.090 W/kg

## SAR Test Report

By Operator : Jay  
Measurement Date : 17-Mar-2006  
Starting Time : 17-Mar-2006 09:02:17 AM  
End Time : 17-Mar-2006 09:17:35 AM  
Scanning Time : 918 secs

### Product Data

Device Name : Motion Computing  
Serial No. : 20302464  
Type : Other  
Model : TS01  
Frequency : 5200.00 MHz  
Max. Transmit Pwr : 0.025 W  
Drift Time : 0 min(s)  
Length : 228 mm  
Width : 170 mm  
Depth : 23 mm  
Antenna Type : Internal - Aux  
Orientation : Back  
Power Drift-Start : 0.411 W/kg  
Power Drift-Finish: 0.403 W/kg  
Power Drift (%) : -1.946

### Phantom Data

Name : APREL-Uni  
Type : Uni-Phantom  
Size (mm) : 280 x 280 x 200  
Serial No. : System Default  
Location : Center  
Description : Uni-Phantom

### Tissue Data

Type : BODY  
Serial No. : 5200  
Frequency : 5200.00 MHz  
Last Calib. Date : 17-Mar-2006  
Temperature : 20.00 °C  
Ambient Temp. : 22.00 °C  
Humidity : 40.00 RH%  
Epsilon : 49.06 F/m  
Sigma : 5.56 S/m  
Density : 1000.00 kg/cu. m

### Probe Data

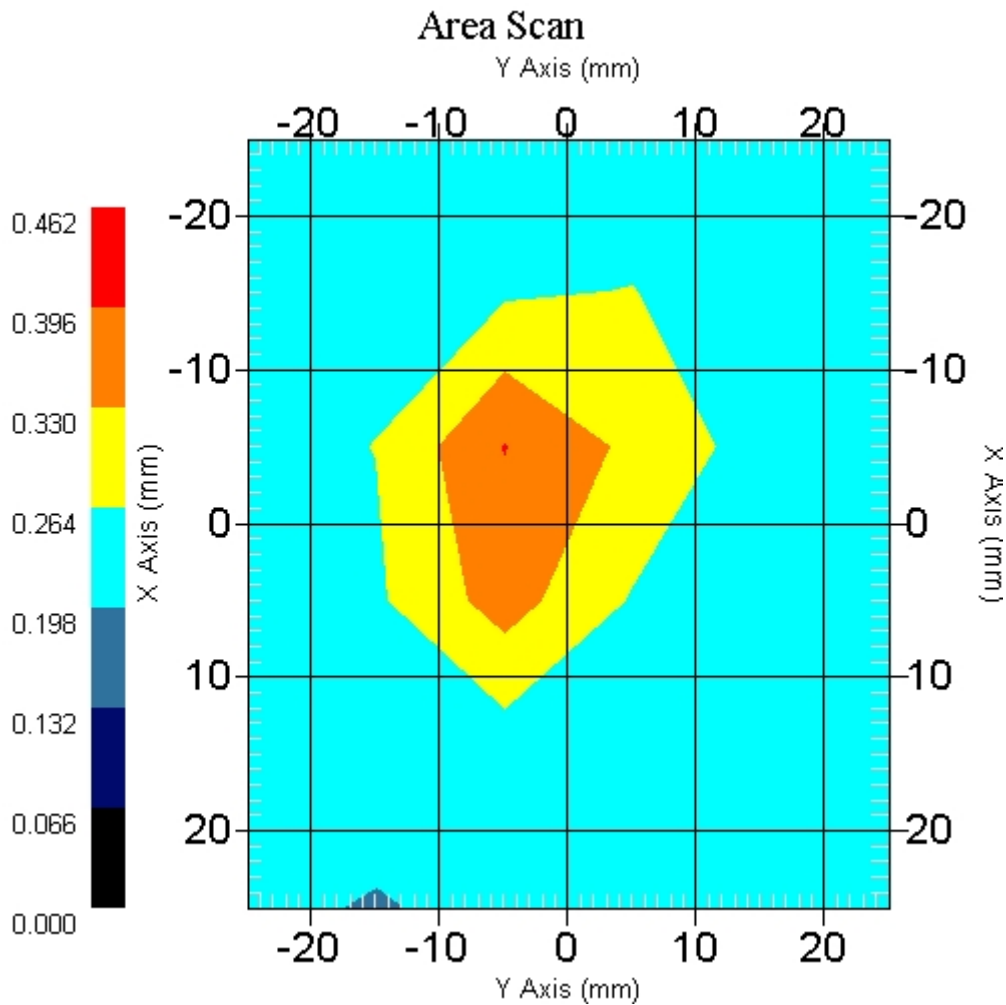
Name : Probe 215 - RFEL  
Model : E020  
Type : E-Field Triangle  
Serial No. : 215  
Last Calib. Date : 10-Jun-2005  
Frequency : 5200.00 MHz  
Duty Cycle Factor: 1  
Conversion Factor: 2.8  
Probe Sensitivity: 1.20 1.20 1.20  $\mu\text{V}/(\text{V}/\text{m})^2$   
Compression Point: 95.00 mV  
Offset : 1.56 mm

Measurement Data

Crest Factor : 1  
 Scan Type : Complete  
 Tissue Temp. : 20.00 °C  
 Ambient Temp. : 22.00 °C  
 Set-up Date : 17-Mar-2006  
 Set-up Time : 12:29:43 PM  
 Area Scan : 6x6x1 : Measurement x=10mm, y=10mm, z=4mm  
 Zoom Scan : 5x5x8 : Measurement x=8mm, y=8mm, z=4mm

Other Data

DUT Position : Back  
 Separation : 0  
 Channel : Low - 36



1 gram SAR value : 0.345 W/kg  
 10 gram SAR value : 0.251 W/kg  
 Area Scan Peak SAR : 0.398 W/kg  
 Zoom Scan Peak SAR : 0.640 W/kg



## SAR Test Report

By Operator : Jay  
Measurement Date : 14-Mar-2006  
Starting Time : 14-Mar-2006 12:29:49 PM  
End Time : 14-Mar-2006 12:52:59 PM  
Scanning Time : 1390 secs

### Product Data

Device Name : Motion Computing  
Serial No. : 20302464  
Type : Other  
Model : TS01  
Frequency : 5200.00 MHz  
Max. Transmit Pwr : 0.025 W  
Drift Time : 0 min(s)  
Length : 228 mm  
Width : 170 mm  
Depth : 23 mm  
Antenna Type : Internal - Main  
Orientation : Front  
Power Drift-Start : 0.187 W/kg  
Power Drift-Finish: 0.190 W/kg  
Power Drift (%) : 1.684

### Phantom Data

Name : APREL-Uni  
Type : Uni-Phantom  
Size (mm) : 280 x 280 x 200  
Serial No. : System Default  
Location : Center  
Description : Uni-Phantom

### Tissue Data

Type : BODY  
Serial No. : 5200  
Frequency : 5200.00 MHz  
Last Calib. Date : 14-Mar-2006  
Temperature : 20.00 °C  
Ambient Temp. : 22.00 °C  
Humidity : 42.00 RH%  
Epsilon : 48.00 F/m  
Sigma : 5.43 S/m  
Density : 1000.00 kg/cu. m

### Probe Data

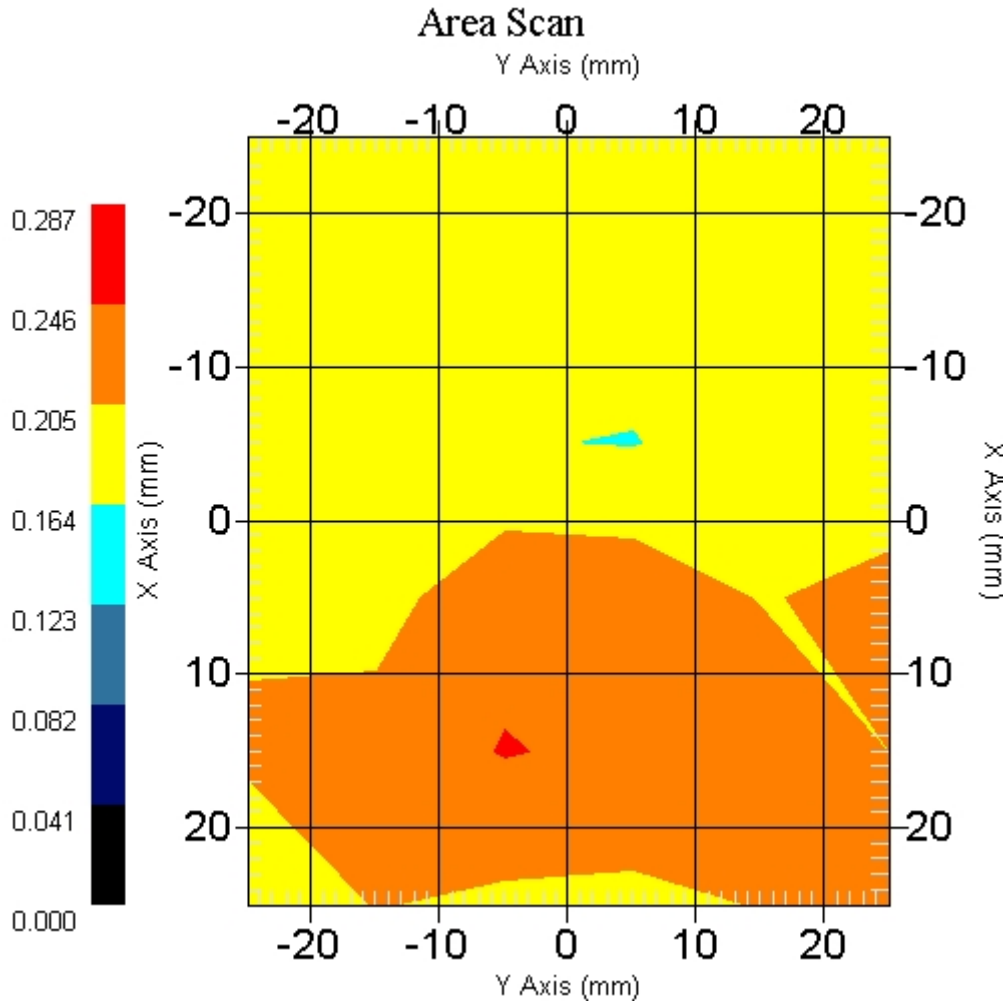
Name : Probe 215 - RFEL  
Model : E020  
Type : E-Field Triangle  
Serial No. : 215  
Last Calib. Date : 10-Jun-2005  
Frequency : 5200.00 MHz  
Duty Cycle Factor: 1  
Conversion Factor: 2.8  
Probe Sensitivity: 1.20 1.20 1.20  $\mu\text{V}/(\text{V}/\text{m})^2$   
Compression Point: 95.00 mV  
Offset : 1.56 mm

Measurement Data

Crest Factor : 1  
 Scan Type : Complete  
 Tissue Temp. : 20.00 °C  
 Ambient Temp. : 22.00 °C  
 Set-up Date : 14-Mar-2006  
 Set-up Time : 12:29:43 PM  
 Area Scan : 6x6x1 : Measurement x=10mm, y=10mm, z=4mm  
 Zoom Scan : 5x5x8 : Measurement x=8mm, y=8mm, z=4mm

Other Data

DUT Position : Front  
 Separation : 0  
 Channel : Low - 36



1 gram SAR value : 0.249 W/kg  
 10 gram SAR value : 0.207 W/kg  
 Area Scan Peak SAR : 0.248 W/kg  
 Zoom Scan Peak SAR : 0.400 W/kg

## SAR Test Report

By Operator : Jay  
Measurement Date : 14-Mar-2006  
Starting Time : 14-Mar-2006 12:55:28 PM  
End Time : 14-Mar-2006 01:10:40 PM  
Scanning Time : 912 secs

### Product Data

Device Name : Motion Computing  
Serial No. : 20302464  
Type : Other  
Model : TS01  
Frequency : 5200.00 MHz  
Max. Transmit Pwr : 0.025 W  
Drift Time : 0 min(s)  
Length : 228 mm  
Width : 170 mm  
Depth : 23 mm  
Antenna Type : Internal - Aux  
Orientation : Front  
Power Drift-Start : 0.493 W/kg  
Power Drift-Finish: 0.504 W/kg  
Power Drift (%) : 2.318

### Phantom Data

Name : APREL-Uni  
Type : Uni-Phantom  
Size (mm) : 280 x 280 x 200  
Serial No. : System Default  
Location : Center  
Description : Uni-Phantom

### Tissue Data

Type : BODY  
Serial No. : 5200  
Frequency : 5200.00 MHz  
Last Calib. Date : 14-Mar-2006  
Temperature : 20.00 °C  
Ambient Temp. : 22.00 °C  
Humidity : 42.00 RH%  
Epsilon : 48.00 F/m  
Sigma : 5.43 S/m  
Density : 1000.00 kg/cu. m

### Probe Data

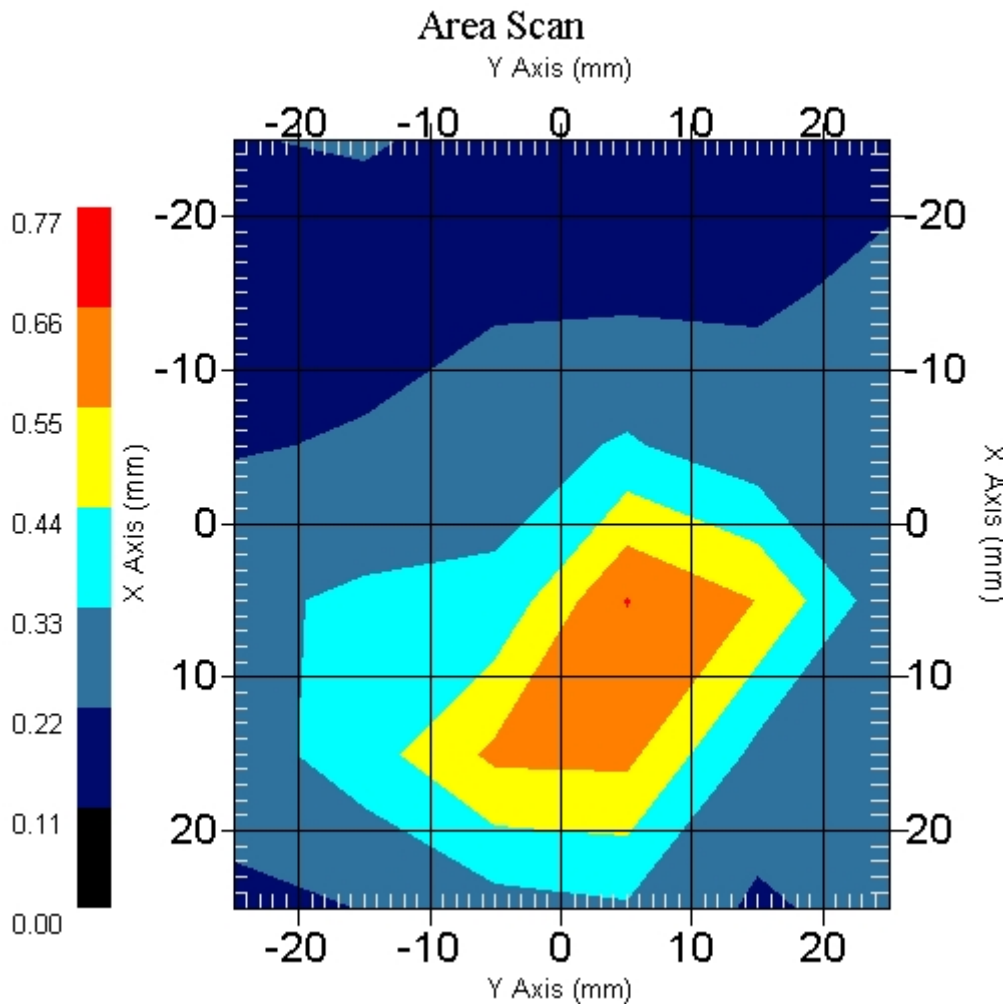
Name : Probe 215 - RFEL  
Model : E020  
Type : E-Field Triangle  
Serial No. : 215  
Last Calib. Date : 10-Jun-2005  
Frequency : 5200.00 MHz  
Duty Cycle Factor: 1  
Conversion Factor: 2.8  
Probe Sensitivity: 1.20 1.20 1.20  $\mu\text{V}/(\text{V}/\text{m})^2$   
Compression Point: 95.00 mV  
Offset : 1.56 mm

Measurement Data

Crest Factor : 1  
 Scan Type : Complete  
 Tissue Temp. : 20.00 °C  
 Ambient Temp. : 22.00 °C  
 Set-up Date : 14-Mar-2006  
 Set-up Time : 12:29:43 PM  
 Area Scan : 6x6x1 : Measurement x=10mm, y=10mm, z=4mm  
 Zoom Scan : 5x5x8 : Measurement x=8mm, y=8mm, z=4mm

Other Data

DUT Position : Front  
 Separation : 0  
 Channel : Low - 36



1 gram SAR value : 0.632 W/kg  
 10 gram SAR value : 0.338 W/kg  
 Area Scan Peak SAR : 0.663 W/kg  
 Zoom Scan Peak SAR : 1.501 W/kg

## SAR Test Report

By Operator : Jay  
Measurement Date : 14-Mar-2006  
Starting Time : 14-Mar-2006 09:40:45 AM  
End Time : 14-Mar-2006 09:53:51 AM  
Scanning Time : 786 secs

### Product Data

Device Name : Motion Computing  
Serial No. : 20302464  
Type : Other  
Model : TS01  
Frequency : 5200.00 MHz  
Max. Transmit Pwr : 0.025 W  
Drift Time : 0 min(s)  
Length : 228 mm  
Width : 170 mm  
Depth : 23 mm  
Antenna Type : Internal - Main  
Orientation : End  
Power Drift-Start : 0.764 W/kg  
Power Drift-Finish: 0.744 W/kg  
Power Drift (%) : -2.655

### Phantom Data

Name : APREL-Uni  
Type : Uni-Phantom  
Size (mm) : 280 x 280 x 200  
Serial No. : System Default  
Location : Center  
Description : Uni-Phantom

### Tissue Data

Type : BODY  
Serial No. : 5200  
Frequency : 5200.00 MHz  
Last Calib. Date : 14-Mar-2006  
Temperature : 20.00 °C  
Ambient Temp. : 22.00 °C  
Humidity : 42.00 RH%  
Epsilon : 48.00 F/m  
Sigma : 5.43 S/m  
Density : 1000.00 kg/cu. m

### Probe Data

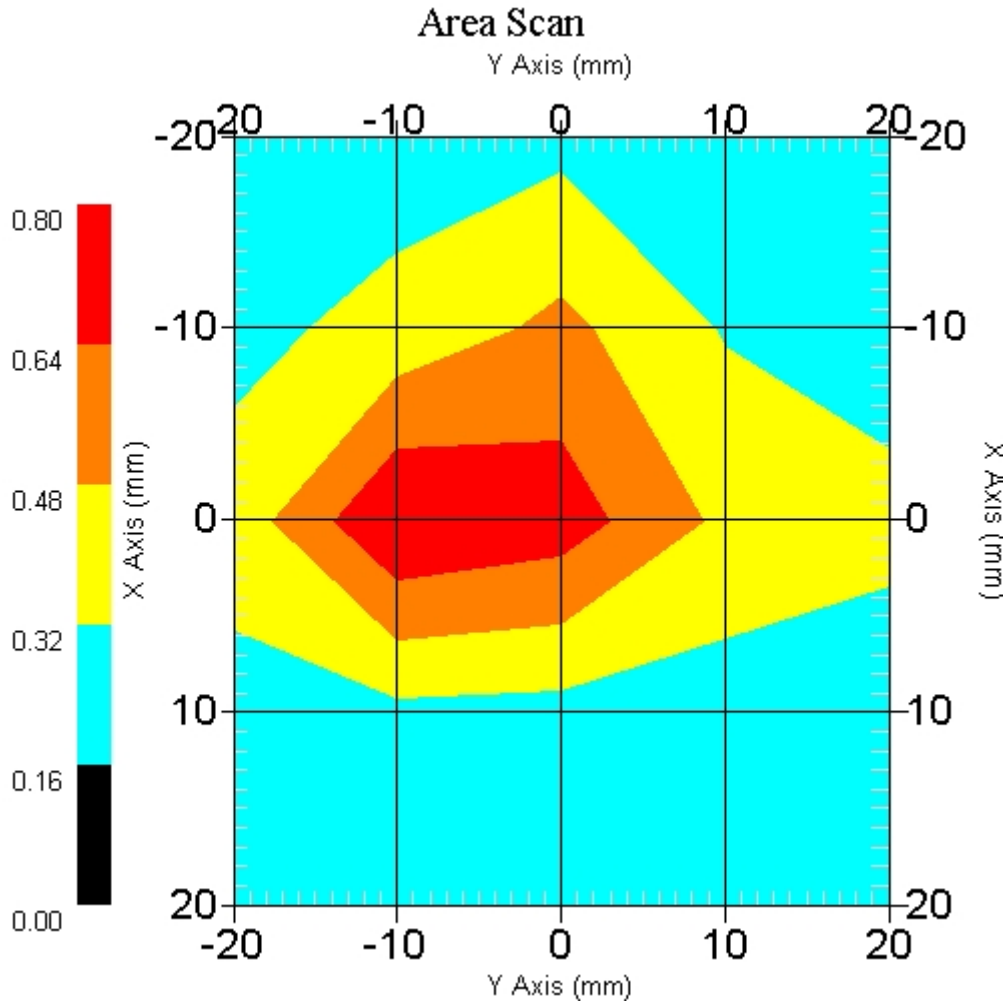
Name : Probe 215 - RFEL  
Model : E020  
Type : E-Field Triangle  
Serial No. : 215  
Last Calib. Date : 10-Jun-2005  
Frequency : 5200.00 MHz  
Duty Cycle Factor: 1  
Conversion Factor: 2.8  
Probe Sensitivity: 1.20 1.20 1.20  $\mu\text{V}/(\text{V}/\text{m})^2$   
Compression Point: 95.00 mV  
Offset : 1.56 mm

Measurement Data

Crest Factor : 1  
 Scan Type : Complete  
 Tissue Temp. : 20.00 °C  
 Ambient Temp. : 22.00 °C  
 Set-up Date : 14-Mar-2006  
 Set-up Time : 5:06:13 PM  
 Area Scan : 5x5x1 : Measurement x=10mm, y=10mm, z=4mm  
 Zoom Scan : 5x5x8 : Measurement x=8mm, y=8mm, z=4mm

Other Data

DUT Position : End  
 Separation : 0  
 Channel : Low - 36



1 gram SAR value : 0.687 W/kg  
 10 gram SAR value : 0.353 W/kg  
 Area Scan Peak SAR : 0.799 W/kg  
 Zoom Scan Peak SAR : 1.751 W/kg

## SAR Test Report

By Operator : Jay  
Measurement Date : 14-Mar-2006  
Starting Time : 14-Mar-2006 10:02:29 AM  
End Time : 14-Mar-2006 10:15:30 AM  
Scanning Time : 781 secs

### Product Data

Device Name : Motion Computing  
Serial No. : 20302464  
Type : Other  
Model : TS01  
Frequency : 5200.00 MHz  
Max. Transmit Pwr : 0.025 W  
Drift Time : 0 min(s)  
Length : 228 mm  
Width : 170 mm  
Depth : 23 mm  
Antenna Type : Internal - Aux  
Orientation : End  
Power Drift-Start : 1.181 W/kg  
Power Drift-Finish: 1.233 W/kg  
Power Drift (%) : 4.410

### Phantom Data

Name : APREL-Uni  
Type : Uni-Phantom  
Size (mm) : 280 x 280 x 200  
Serial No. : System Default  
Location : Center  
Description : Uni-Phantom

### Tissue Data

Type : BODY  
Serial No. : 5200  
Frequency : 5200.00 MHz  
Last Calib. Date : 14-Mar-2006  
Temperature : 20.00 °C  
Ambient Temp. : 22.00 °C  
Humidity : 42.00 RH%  
Epsilon : 48.00 F/m  
Sigma : 5.43 S/m  
Density : 1000.00 kg/cu. m

### Probe Data

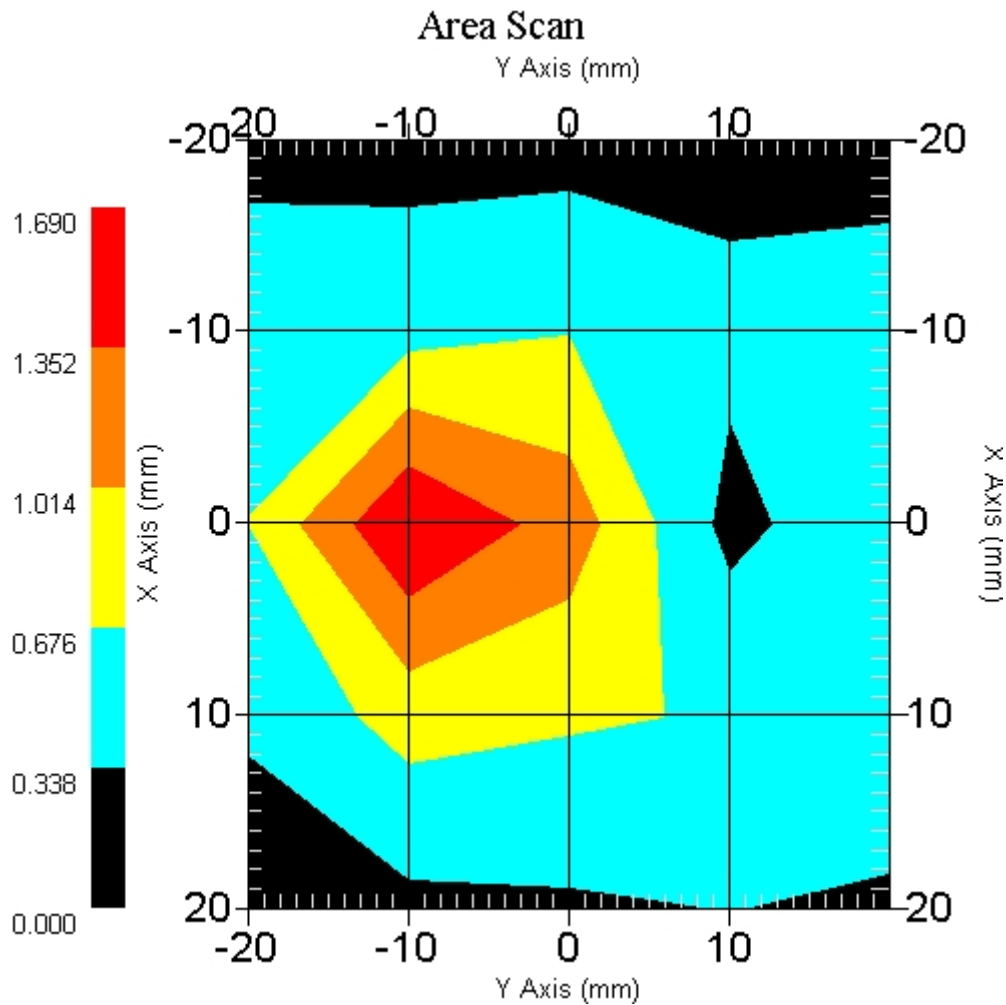
Name : Probe 215 - RFEL  
Model : E020  
Type : E-Field Triangle  
Serial No. : 215  
Last Calib. Date : 10-Jun-2005  
Frequency : 5200.00 MHz  
Duty Cycle Factor: 1  
Conversion Factor: 2.8  
Probe Sensitivity: 1.20 1.20 1.20  $\mu\text{V}/(\text{V}/\text{m})^2$   
Compression Point: 95.00 mV  
Offset : 1.56 mm

Measurement Data

Crest Factor : 1  
 Scan Type : Complete  
 Tissue Temp. : 20.00 °C  
 Ambient Temp. : 22.00 °C  
 Set-up Date : 14-Mar-2006  
 Set-up Time : 5:06:13 PM  
 Area Scan : 5x5x1 : Measurement x=10mm, y=10mm, z=4mm  
 Zoom Scan : 5x5x8 : Measurement x=8mm, y=8mm, z=4mm

Other Data

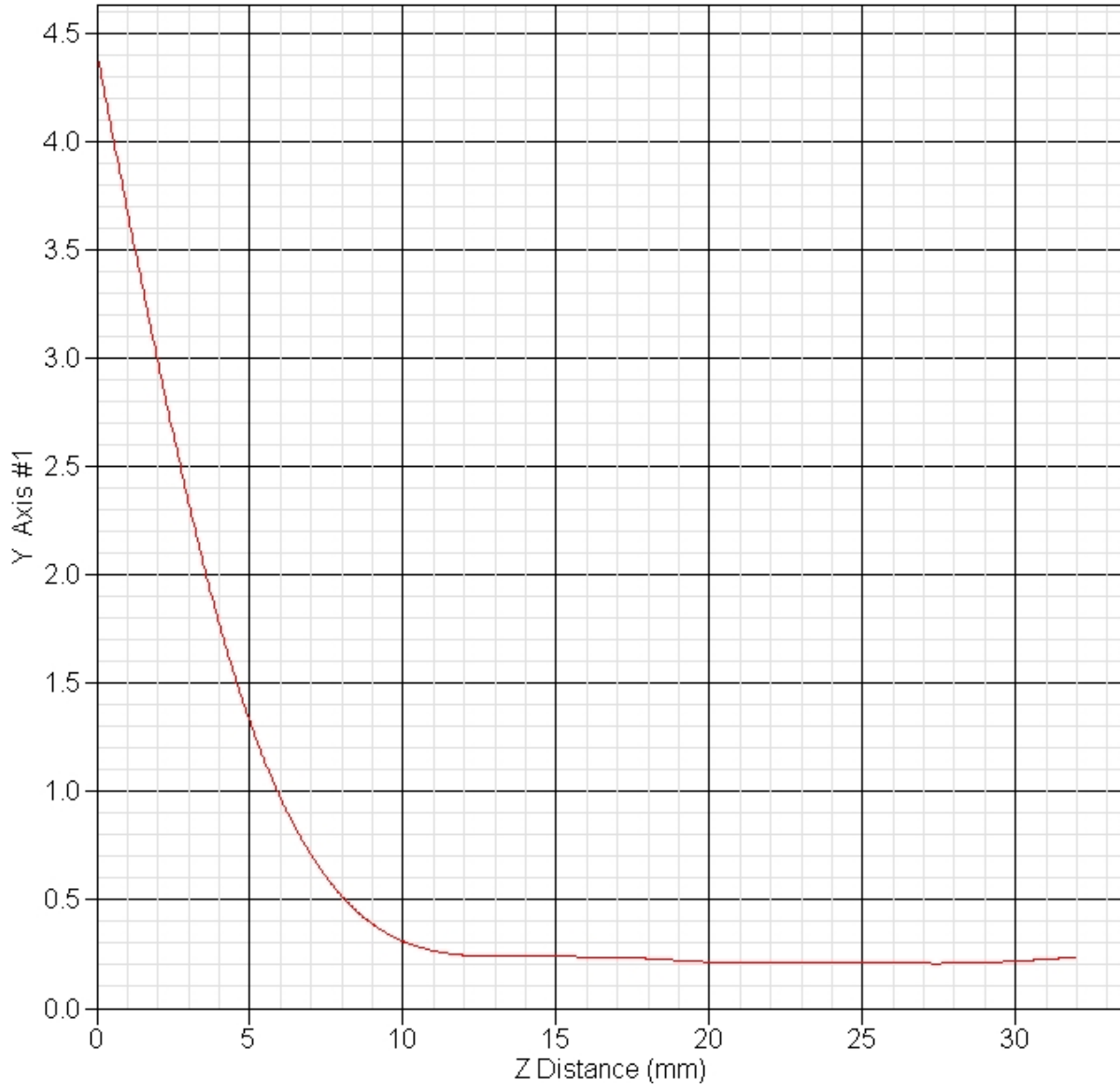
DUT Position : End  
 Separation : 0  
 Channel : Low - 36



1 gram SAR value : 1.548 W/kg  
 10 gram SAR value : 0.651 W/kg  
 Area Scan Peak SAR : 1.689 W/kg  
 Zoom Scan Peak SAR : 4.413 W/kg



### SAR-Z Axis at Hotspot x:0.40 y:-10.10



## SAR Test Report

By Operator : Jay  
Measurement Date : 13-Mar-2006  
Starting Time : 13-Mar-2006 04:16:25 PM  
End Time : 13-Mar-2006 04:29:15 PM  
Scanning Time : 770 secs

### Product Data

Device Name : Motion Computing  
Serial No. : 20302464  
Type : Other  
Model : TS01  
Frequency : 5200.00 MHz  
Max. Transmit Pwr : 0.025 W  
Drift Time : 0 min(s)  
Length : 228 mm  
Width : 170 mm  
Depth : 23 mm  
Antenna Type : Internal - Main  
Orientation : End  
Power Drift-Start : 0.685 W/kg  
Power Drift-Finish: 0.668 W/kg  
Power Drift (%) : -2.482

### Phantom Data

Name : APREL-Uni  
Type : Uni-Phantom  
Size (mm) : 280 x 280 x 200  
Serial No. : System Default  
Location : Center  
Description : Uni-Phantom

### Tissue Data

Type : BODY  
Serial No. : 5200  
Frequency : 5200.00 MHz  
Last Calib. Date : 13-Mar-2006  
Temperature : 20.00 °C  
Ambient Temp. : 22.00 °C  
Humidity : 42.00 RH%  
Epsilon : 47.80 F/m  
Sigma : 5.39 S/m  
Density : 1000.00 kg/cu. m

### Probe Data

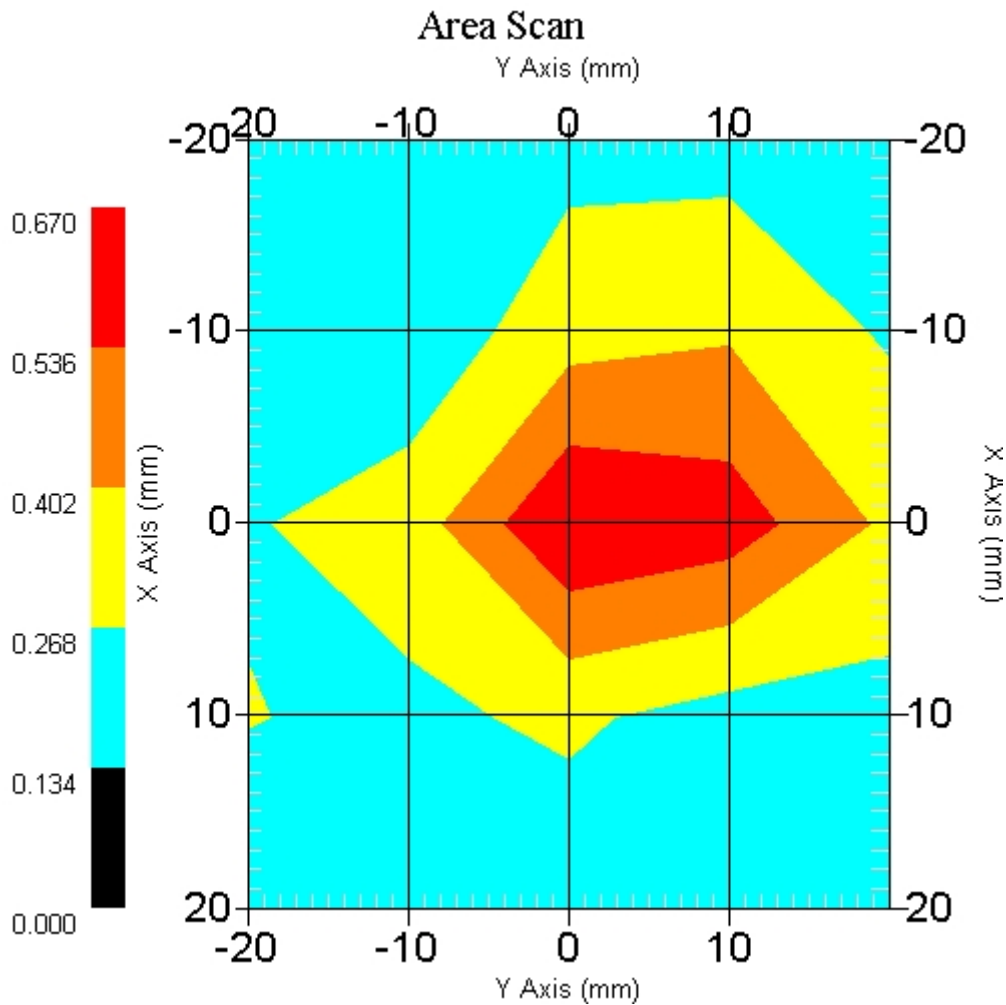
Name : Probe 215 - RFEL  
Model : E020  
Type : E-Field Triangle  
Serial No. : 215  
Last Calib. Date : 10-Jun-2005  
Frequency : 5200.00 MHz  
Duty Cycle Factor: 1  
Conversion Factor: 2.8  
Probe Sensitivity: 1.20 1.20 1.20  $\mu\text{V}/(\text{V}/\text{m})^2$   
Compression Point: 95.00 mV  
Offset : 1.56 mm

Measurement Data

Crest Factor : 1  
 Scan Type : Complete  
 Tissue Temp. : 20.00 °C  
 Ambient Temp. : 22.00 °C  
 Set-up Date : 13-Mar-2006  
 Set-up Time : 5:06:13 PM  
 Area Scan : 5x5x1 : Measurement x=10mm, y=10mm, z=4mm  
 Zoom Scan : 5x5x8 : Measurement x=8mm, y=8mm, z=4mm

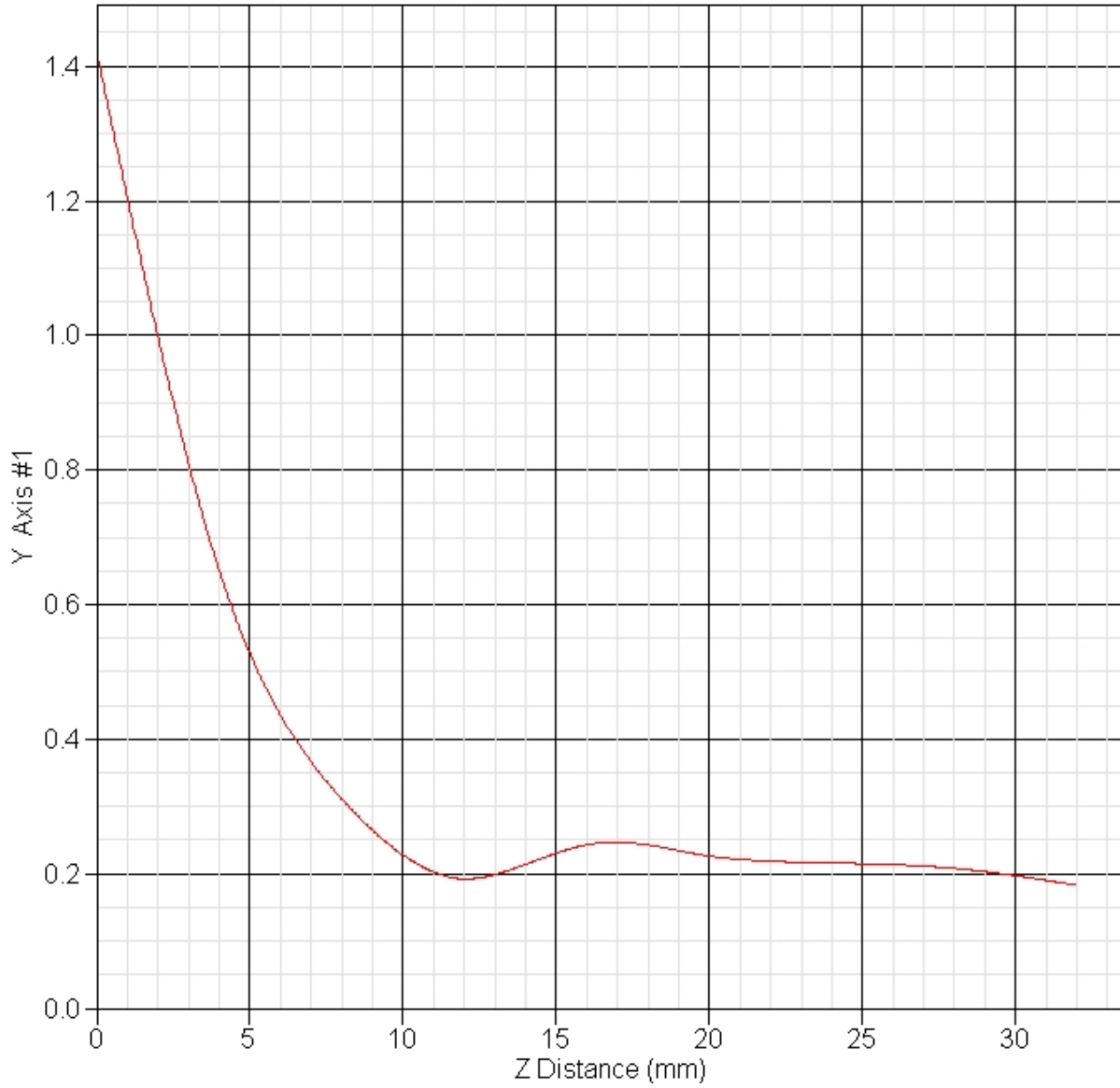
Other Data

DUT Position : End  
 Separation : 0  
 Channel : Low - 52



1 gram SAR value : 0.567 W/kg  
 10 gram SAR value : 0.311 W/kg  
 Area Scan Peak SAR : 0.669 W/kg  
 Zoom Scan Peak SAR : 1.421 W/kg

**SAR-Z Axis**  
at Hotspot x:0.40 y:-0.30



## SAR Test Report

By Operator : Jay  
Measurement Date : 13-Mar-2006  
Starting Time : 13-Mar-2006 04:30:39 PM  
End Time : 13-Mar-2006 04:43:32 PM  
Scanning Time : 773 secs

### Product Data

Device Name : Motion Computing  
Serial No. : 20302464  
Type : Other  
Model : TS01  
Frequency : 5200.00 MHz  
Max. Transmit Pwr : 0.025 W  
Drift Time : 0 min(s)  
Length : 228 mm  
Width : 170 mm  
Depth : 23 mm  
Antenna Type : Internal - Main  
Orientation : End  
Power Drift-Start : 0.623 W/kg  
Power Drift-Finish: 0.625 W/kg  
Power Drift (%) : 0.308

### Phantom Data

Name : APREL-Uni  
Type : Uni-Phantom  
Size (mm) : 280 x 280 x 200  
Serial No. : System Default  
Location : Center  
Description : Uni-Phantom

### Tissue Data

Type : BODY  
Serial No. : 5200  
Frequency : 5200.00 MHz  
Last Calib. Date : 13-Mar-2006  
Temperature : 20.00 °C  
Ambient Temp. : 22.00 °C  
Humidity : 42.00 RH%  
Epsilon : 47.80 F/m  
Sigma : 5.39 S/m  
Density : 1000.00 kg/cu. m

### Probe Data

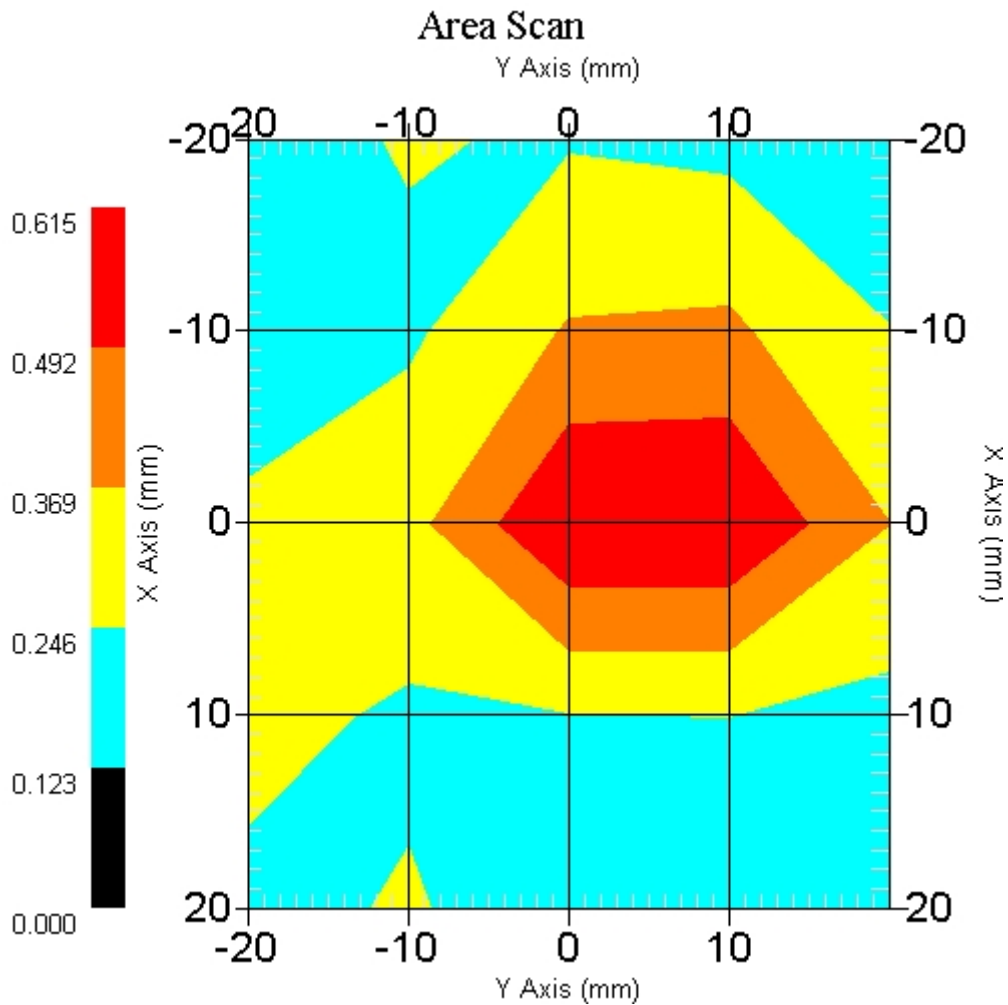
Name : Probe 215 - RFEL  
Model : E020  
Type : E-Field Triangle  
Serial No. : 215  
Last Calib. Date : 10-Jun-2005  
Frequency : 5200.00 MHz  
Duty Cycle Factor: 1  
Conversion Factor: 2.8  
Probe Sensitivity: 1.20 1.20 1.20  $\mu\text{V}/(\text{V}/\text{m})^2$   
Compression Point: 95.00 mV  
Offset : 1.56 mm

Measurement Data

Crest Factor : 1  
 Scan Type : Complete  
 Tissue Temp. : 20.00 °C  
 Ambient Temp. : 22.00 °C  
 Set-up Date : 13-Mar-2006  
 Set-up Time : 5:06:13 PM  
 Area Scan : 5x5x1 : Measurement x=10mm, y=10mm, z=4mm  
 Zoom Scan : 5x5x8 : Measurement x=8mm, y=8mm, z=4mm

Other Data

DUT Position : End  
 Separation : 0  
 Channel : Mid - 58



1 gram SAR value : 0.564 W/kg  
 10 gram SAR value : 0.312 W/kg  
 Area Scan Peak SAR : 0.613 W/kg  
 Zoom Scan Peak SAR : 1.471 W/kg

## SAR Test Report

By Operator : Jay  
Measurement Date : 13-Mar-2006  
Starting Time : 13-Mar-2006 04:47:56 PM  
End Time : 13-Mar-2006 05:00:56 PM  
Scanning Time : 780 secs

### Product Data

Device Name : Motion Computing  
Serial No. : 20302464  
Type : Other  
Model : TS01  
Frequency : 5200.00 MHz  
Max. Transmit Pwr : 0.025 W  
Drift Time : 0 min(s)  
Length : 228 mm  
Width : 170 mm  
Depth : 23 mm  
Antenna Type : Internal  
Orientation : End  
Power Drift-Start : 0.550 W/kg  
Power Drift-Finish: 0.556 W/kg  
Power Drift (%) : 1.031

### Phantom Data

Name : APREL-Uni  
Type : Uni-Phantom  
Size (mm) : 280 x 280 x 200  
Serial No. : System Default  
Location : Center  
Description : Uni-Phantom

### Tissue Data

Type : BODY  
Serial No. : 5200  
Frequency : 5200.00 MHz  
Last Calib. Date : 13-Mar-2006  
Temperature : 20.00 °C  
Ambient Temp. : 22.00 °C  
Humidity : 42.00 RH%  
Epsilon : 47.80 F/m  
Sigma : 5.39 S/m  
Density : 1000.00 kg/cu. m

### Probe Data

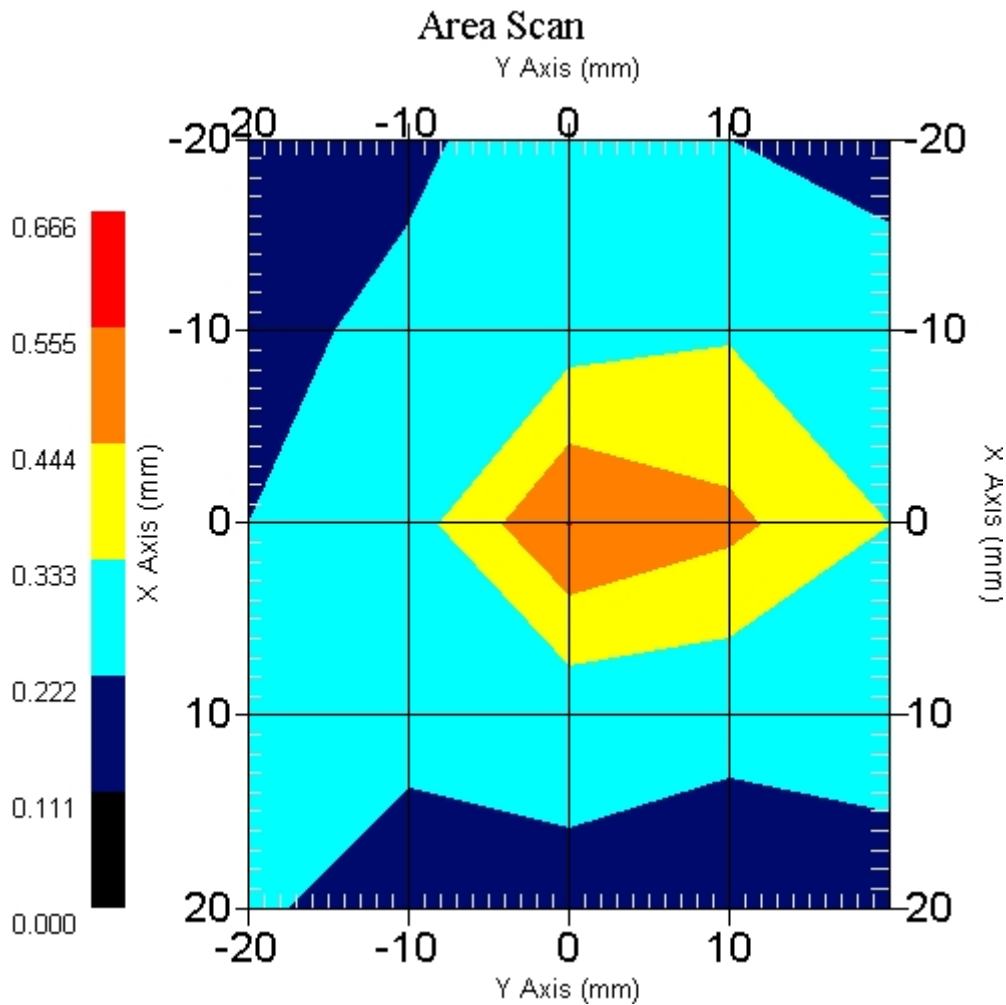
Name : Probe 215 - RFEL  
Model : E020  
Type : E-Field Triangle  
Serial No. : 215  
Last Calib. Date : 10-Jun-2005  
Frequency : 5200.00 MHz  
Duty Cycle Factor: 1  
Conversion Factor: 2.8  
Probe Sensitivity: 1.20 1.20 1.20  $\mu\text{V}/(\text{V}/\text{m})^2$   
Compression Point: 95.00 mV  
Offset : 1.56 mm

Measurement Data

Crest Factor : 1  
 Scan Type : Complete  
 Tissue Temp. : 20.00 °C  
 Ambient Temp. : 22.00 °C  
 Set-up Date : 13-Mar-2006  
 Set-up Time : 5:06:13 PM  
 Area Scan : 5x5x1 : Measurement x=10mm, y=10mm, z=4mm  
 Zoom Scan : 5x5x8 : Measurement x=8mm, y=8mm, z=4mm

Other Data

DUT Position : End  
 Separation : 0  
 Channel : High - 64



1 gram SAR value : 0.487 W/kg  
 10 gram SAR value : 0.288 W/kg  
 Area Scan Peak SAR : 0.557 W/kg  
 Zoom Scan Peak SAR : 1.050 W/kg



**SAR Test Report**

By Operator : Jay  
Measurement Date : 13-Mar-2006  
Starting Time : 13-Mar-2006 05:47:11 PM  
End Time : 13-Mar-2006 06:00:16 PM  
Scanning Time : 785 secs

## Product Data

Device Name : Motion Computing  
Serial No. : 20302464  
Type : Other  
Model : TS01  
Frequency : 5200.00 MHz  
Max. Transmit Pwr : 0.025 W  
Drift Time : 0 min(s)  
Length : 228 mm  
Width : 170 mm  
Depth : 23 mm  
Antenna Type : Internal - Aux  
Orientation : End  
Power Drift-Start : 0.907 W/kg  
Power Drift-Finish: 0.921 W/kg  
Power Drift (%) : 1.544

## Phantom Data

Name : APREL-Uni  
Type : Uni-Phantom  
Size (mm) : 280 x 280 x 200  
Serial No. : System Default  
Location : Center  
Description : Uni-Phantom

## Tissue Data

Type : BODY  
Serial No. : 5200  
Frequency : 5200.00 MHz  
Last Calib. Date : 13-Mar-2006  
Temperature : 20.00 °C  
Ambient Temp. : 22.00 °C  
Humidity : 42.00 RH%  
Epsilon : 47.80 F/m  
Sigma : 5.39 S/m  
Density : 1000.00 kg/cu. m

## Probe Data

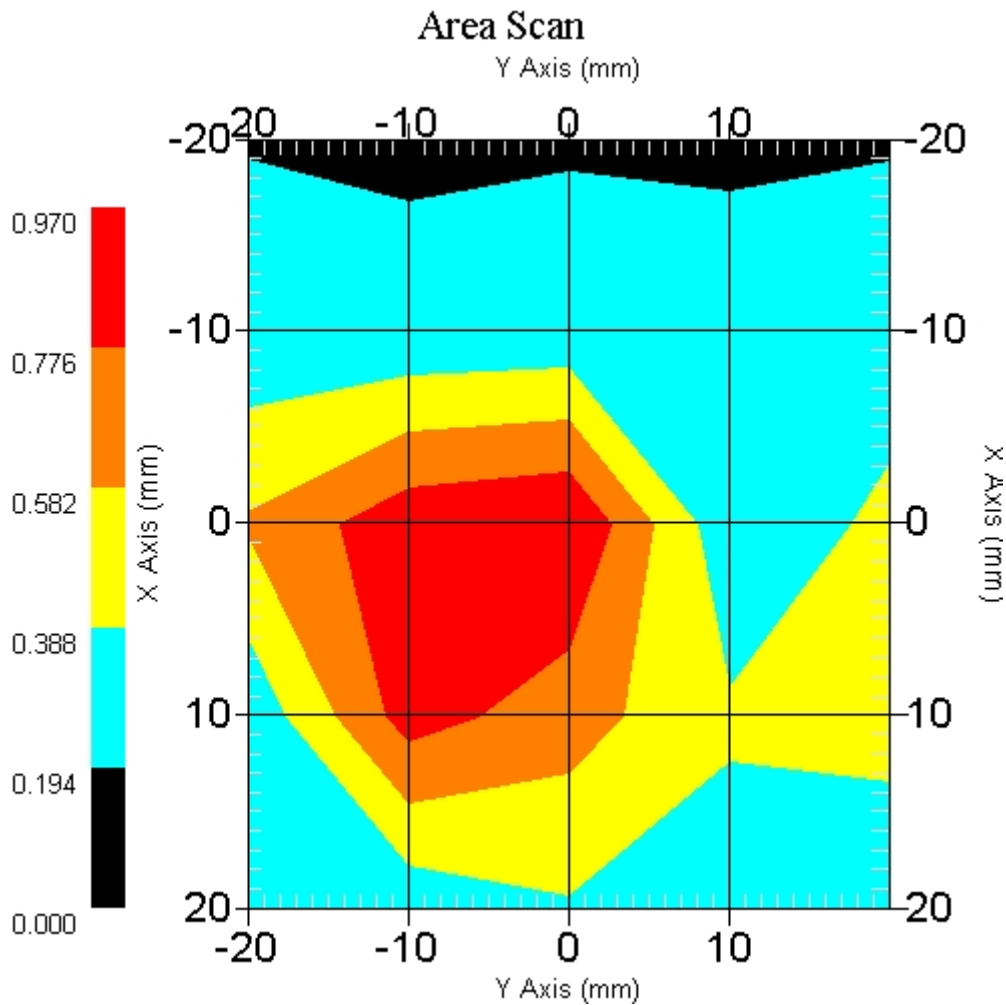
Name : Probe 215 - RFEL  
Model : E020  
Type : E-Field Triangle  
Serial No. : 215  
Last Calib. Date : 10-Jun-2005  
Frequency : 5200.00 MHz  
Duty Cycle Factor: 1  
Conversion Factor: 2.8  
Probe Sensitivity: 1.20 1.20 1.20  $\mu\text{V}/(\text{V}/\text{m})^2$   
Compression Point: 95.00 mV  
Offset : 1.56 mm

Measurement Data

Crest Factor : 1  
 Scan Type : Complete  
 Tissue Temp. : 20.00 °C  
 Ambient Temp. : 22.00 °C  
 Set-up Date : 13-Mar-2006  
 Set-up Time : 5:06:13 PM  
 Area Scan : 5x5x1 : Measurement x=10mm, y=10mm, z=4mm  
 Zoom Scan : 5x5x8 : Measurement x=8mm, y=8mm, z=4mm

Other Data

DUT Position : End  
 Separation : 0  
 Channel : Low - 52



1 gram SAR value : 0.882 W/kg  
 10 gram SAR value : 0.408 W/kg  
 Area Scan Peak SAR : 0.968 W/kg  
 Zoom Scan Peak SAR : 2.462 W/kg

## SAR Test Report

By Operator : Jay  
Measurement Date : 13-Mar-2006  
Starting Time : 13-Mar-2006 05:18:28 PM  
End Time : 13-Mar-2006 05:31:29 PM  
Scanning Time : 781 secs

### Product Data

Device Name : Motion Computing  
Serial No. : 20302464  
Type : Other  
Model : TS01  
Frequency : 5200.00 MHz  
Max. Transmit Pwr : 0.025 W  
Drift Time : 0 min(s)  
Length : 228 mm  
Width : 170 mm  
Depth : 23 mm  
Antenna Type : Internal - Aux  
Orientation : End  
Power Drift-Start : 0.431 W/kg  
Power Drift-Finish: 0.443 W/kg  
Power Drift (%) : 2.622

### Phantom Data

Name : APREL-Uni  
Type : Uni-Phantom  
Size (mm) : 280 x 280 x 200  
Serial No. : System Default  
Location : Center  
Description : Uni-Phantom

### Tissue Data

Type : BODY  
Serial No. : 5200  
Frequency : 5200.00 MHz  
Last Calib. Date : 13-Mar-2006  
Temperature : 20.00 °C  
Ambient Temp. : 22.00 °C  
Humidity : 42.00 RH%  
Epsilon : 47.80 F/m  
Sigma : 5.39 S/m  
Density : 1000.00 kg/cu. m

### Probe Data

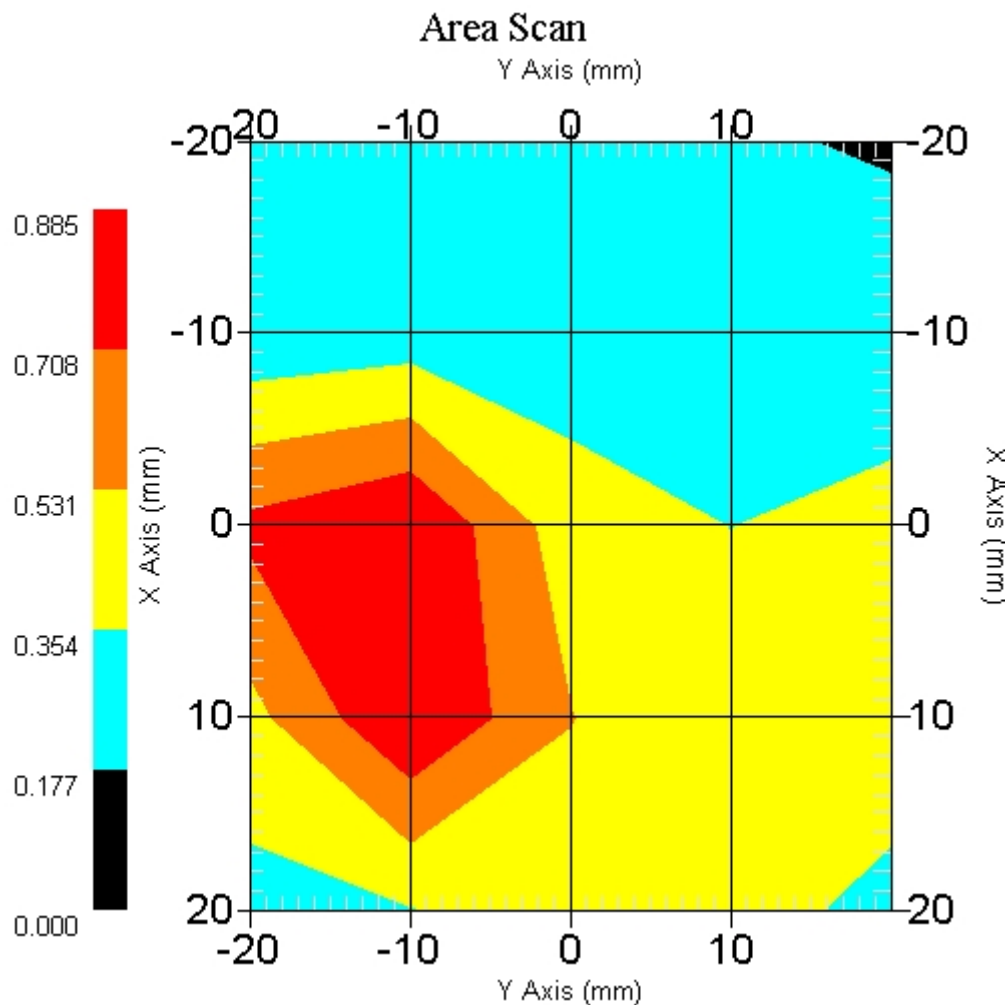
Name : Probe 215 - RFEL  
Model : E020  
Type : E-Field Triangle  
Serial No. : 215  
Last Calib. Date : 10-Jun-2005  
Frequency : 5200.00 MHz  
Duty Cycle Factor: 1  
Conversion Factor: 2.8  
Probe Sensitivity: 1.20 1.20 1.20  $\mu\text{V}/(\text{V}/\text{m})^2$   
Compression Point: 95.00 mV  
Offset : 1.56 mm

Measurement Data

Crest Factor : 1  
 Scan Type : Complete  
 Tissue Temp. : 20.00 °C  
 Ambient Temp. : 22.00 °C  
 Set-up Date : 13-Mar-2006  
 Set-up Time : 5:06:13 PM  
 Area Scan : 5x5x1 : Measurement x=10mm, y=10mm, z=4mm  
 Zoom Scan : 5x5x8 : Measurement x=8mm, y=8mm, z=4mm

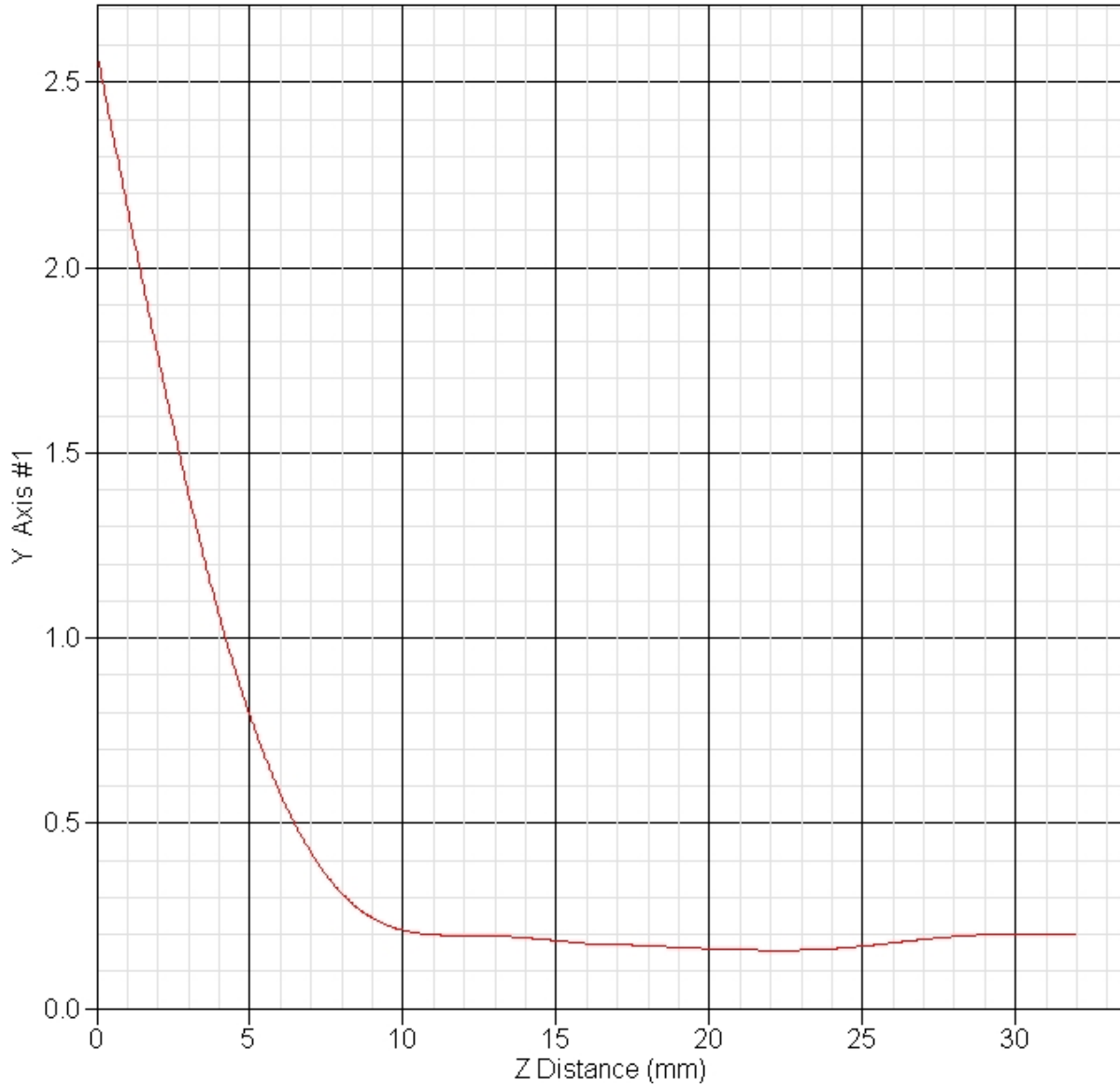
Other Data

DUT Position : End  
 Separation : 0  
 Channel : Mid - 58



1 gram SAR value : 0.899 W/kg  
 10 gram SAR value : 0.422 W/kg  
 Area Scan Peak SAR : 0.885 W/kg  
 Zoom Scan Peak SAR : 2.582 W/kg

### SAR-Z Axis at Hotspot x:8.30 y:-10.10



## SAR Test Report

By Operator : Jay  
Measurement Date : 13-Mar-2006  
Starting Time : 13-Mar-2006 05:03:04 PM  
End Time : 13-Mar-2006 05:16:03 PM  
Scanning Time : 779 secs

### Product Data

Device Name : Motion Computing  
Serial No. : 20302464  
Type : Other  
Model : TS01  
Frequency : 5200.00 MHz  
Max. Transmit Pwr : 0.025 W  
Drift Time : 0 min(s)  
Length : 228 mm  
Width : 170 mm  
Depth : 23 mm  
Antenna Type : Internal - Aux  
Orientation : End  
Power Drift-Start : 0.337 W/kg  
Power Drift-Finish: 0.344 W/kg  
Power Drift (%) : 2.077

### Phantom Data

Name : APREL-Uni  
Type : Uni-Phantom  
Size (mm) : 280 x 280 x 200  
Serial No. : System Default  
Location : Center  
Description : Uni-Phantom

### Tissue Data

Type : BODY  
Serial No. : 5200  
Frequency : 5200.00 MHz  
Last Calib. Date : 13-Mar-2006  
Temperature : 20.00 °C  
Ambient Temp. : 22.00 °C  
Humidity : 42.00 RH%  
Epsilon : 47.80 F/m  
Sigma : 5.39 S/m  
Density : 1000.00 kg/cu. m

### Probe Data

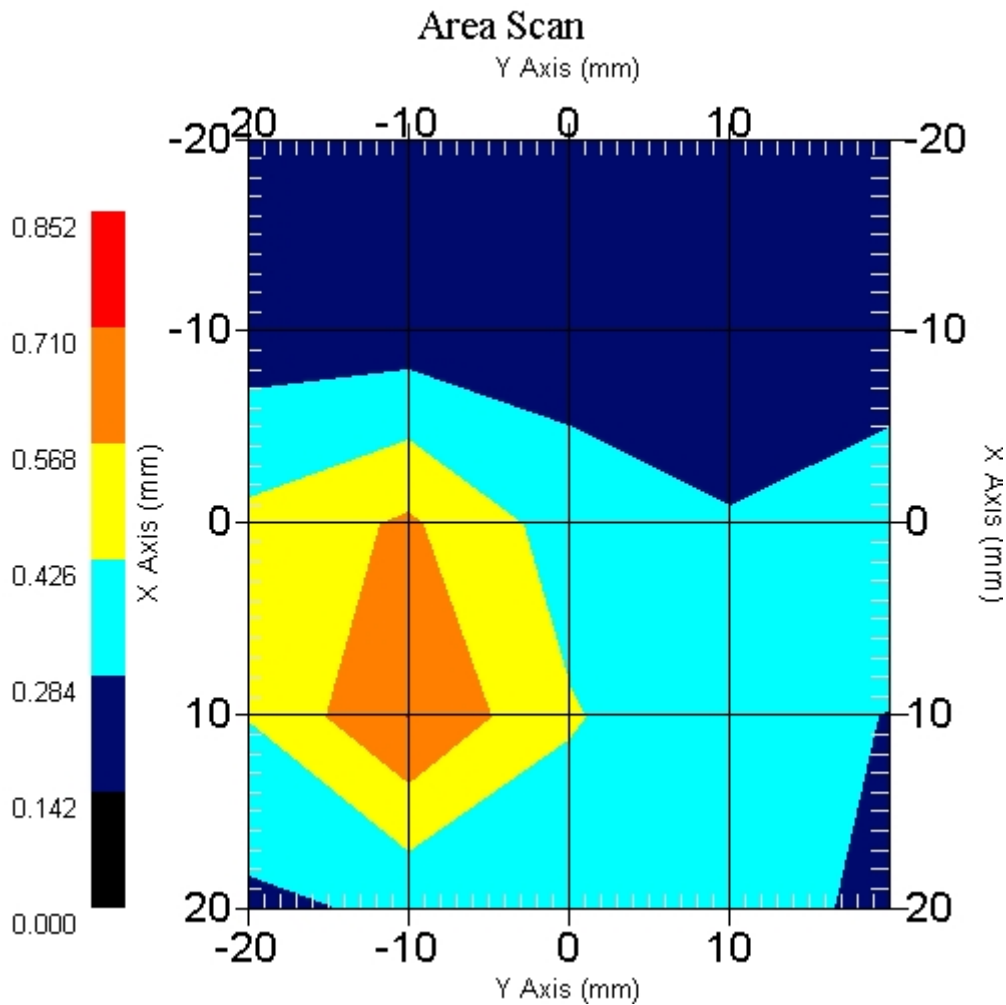
Name : Probe 215 - RFEL  
Model : E020  
Type : E-Field Triangle  
Serial No. : 215  
Last Calib. Date : 10-Jun-2005  
Frequency : 5200.00 MHz  
Duty Cycle Factor: 1  
Conversion Factor: 2.8  
Probe Sensitivity: 1.20 1.20 1.20  $\mu\text{V}/(\text{V}/\text{m})^2$   
Compression Point: 95.00 mV  
Offset : 1.56 mm

Measurement Data

Crest Factor : 1  
 Scan Type : Complete  
 Tissue Temp. : 20.00 °C  
 Ambient Temp. : 22.00 °C  
 Set-up Date : 13-Mar-2006  
 Set-up Time : 5:06:13 PM  
 Area Scan : 5x5x1 : Measurement x=10mm, y=10mm, z=4mm  
 Zoom Scan : 5x5x8 : Measurement x=8mm, y=8mm, z=4mm

Other Data

DUT Position : End  
 Separation : 0  
 Channel : High - 64



1 gram SAR value : 0.730 W/kg  
 10 gram SAR value : 0.350 W/kg  
 Area Scan Peak SAR : 0.711 W/kg  
 Zoom Scan Peak SAR : 1.991 W/kg

## SAR Test Report

By Operator : Jay  
Measurement Date : 14-Mar-2006  
Starting Time : 14-Mar-2006 11:16:12 AM  
End Time : 14-Mar-2006 11:37:15 AM  
Scanning Time : 1263 secs

### Product Data

Device Name : Motion Computing  
Serial No. : 20302464  
Type : Other  
Model : TS01  
Frequency : 5200.00 MHz  
Max. Transmit Pwr : 0.025 W  
Drift Time : 0 min(s)  
Length : 228 mm  
Width : 170 mm  
Depth : 23 mm  
Antenna Type : Internal - Main  
Orientation : Back  
Power Drift-Start : 0.358 W/kg  
Power Drift-Finish: 0.344 W/kg  
Power Drift (%) : -3.891

### Phantom Data

Name : APREL-Uni  
Type : Uni-Phantom  
Size (mm) : 280 x 280 x 200  
Serial No. : System Default  
Location : Center  
Description : Uni-Phantom

### Tissue Data

Type : BODY  
Serial No. : 5200  
Frequency : 5200.00 MHz  
Last Calib. Date : 14-Mar-2006  
Temperature : 20.00 °C  
Ambient Temp. : 22.00 °C  
Humidity : 42.00 RH%  
Epsilon : 48.00 F/m  
Sigma : 5.43 S/m  
Density : 1000.00 kg/cu. m

### Probe Data

Name : Probe 215 - RFEL  
Model : E020  
Type : E-Field Triangle  
Serial No. : 215  
Last Calib. Date : 10-Jun-2005  
Frequency : 5200.00 MHz  
Duty Cycle Factor: 1  
Conversion Factor: 2.8  
Probe Sensitivity: 1.20 1.20 1.20  $\mu\text{V}/(\text{V}/\text{m})^2$   
Compression Point: 95.00 mV  
Offset : 1.56 mm

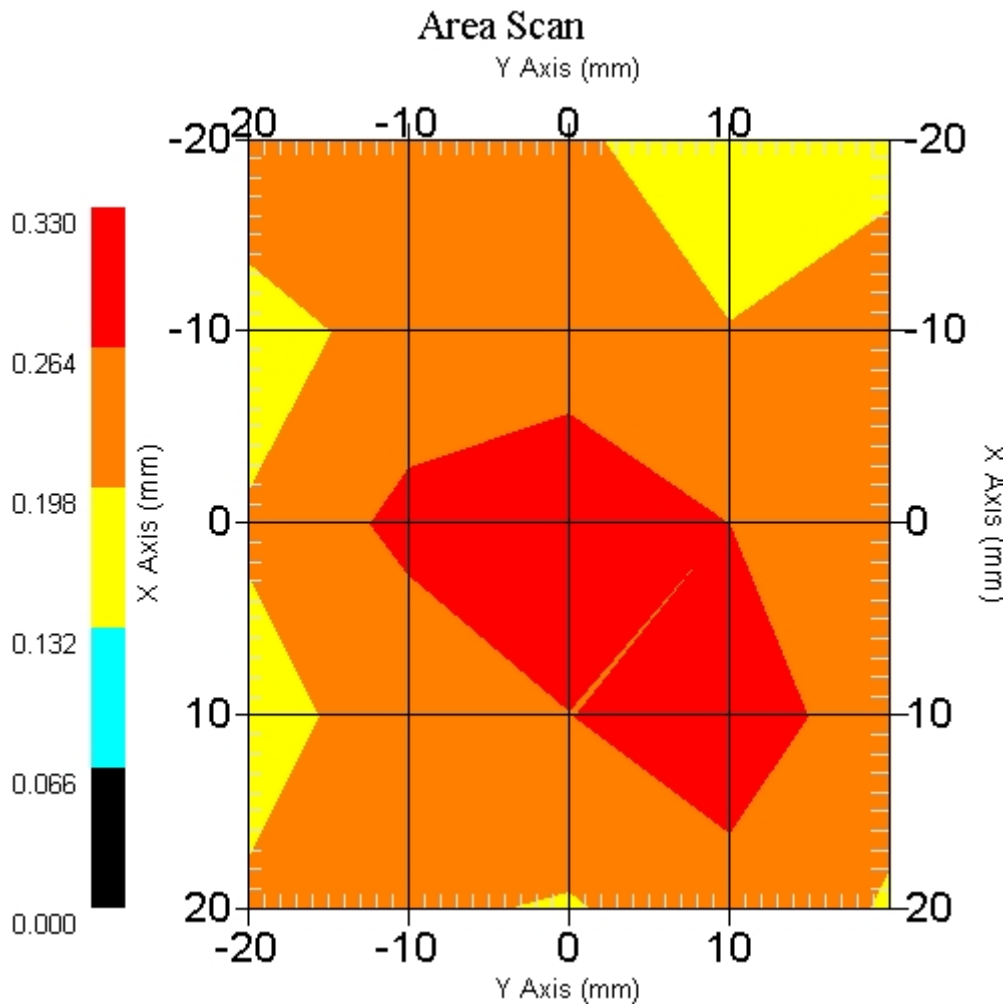


Measurement Data

Crest Factor : 1  
 Scan Type : Complete  
 Tissue Temp. : 20.00 °C  
 Ambient Temp. : 22.00 °C  
 Set-up Date : 14-Mar-2006  
 Set-up Time : 5:06:13 PM  
 Area Scan : 5x5x1 : Measurement x=10mm, y=10mm, z=4mm  
 Zoom Scan : 5x5x8 : Measurement x=8mm, y=8mm, z=4mm

Other Data

DUT Position : Back  
 Separation : 0  
 Channel : Low - 52



1 gram SAR value : 0.322 W/kg  
 10 gram SAR value : 0.231 W/kg  
 Area Scan Peak SAR : 0.329 W/kg  
 Zoom Scan Peak SAR : 0.590 W/kg

## SAR Test Report

By Operator : Jay  
Measurement Date : 17-Mar-2006  
Starting Time : 17-Mar-2006 08:36:05 AM  
End Time : 17-Mar-2006 08:59:25 AM  
Scanning Time : 1400 secs

### Product Data

Device Name : Motion Computing  
Serial No. : 20302464  
Type : Other  
Model : TS01  
Frequency : 5200.00 MHz  
Max. Transmit Pwr : 0.025 W  
Drift Time : 0 min(s)  
Length : 228 mm  
Width : 170 mm  
Depth : 23 mm  
Antenna Type : Internal - Aux  
Orientation : Back  
Power Drift-Start : 0.381 W/kg  
Power Drift-Finish: 0.381 W/kg  
Power Drift (%) : -0.008

### Phantom Data

Name : APREL-Uni  
Type : Uni-Phantom  
Size (mm) : 280 x 280 x 200  
Serial No. : System Default  
Location : Center  
Description : Uni-Phantom

### Tissue Data

Type : BODY  
Serial No. : 5200  
Frequency : 5200.00 MHz  
Last Calib. Date : 17-Mar-2006  
Temperature : 20.00 °C  
Ambient Temp. : 22.00 °C  
Humidity : 40.00 RH%  
Epsilon : 49.06 F/m  
Sigma : 5.56 S/m  
Density : 1000.00 kg/cu. m

### Probe Data

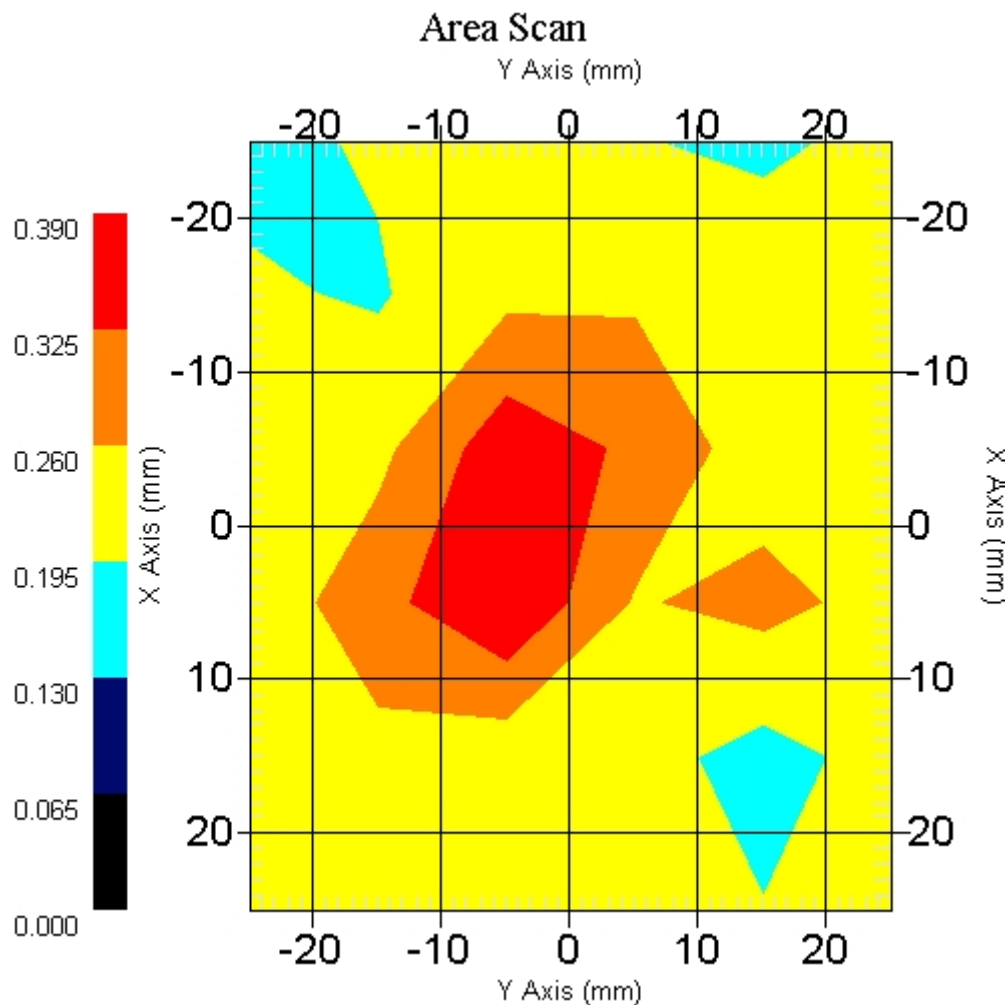
Name : Probe 215 - RFEL  
Model : E020  
Type : E-Field Triangle  
Serial No. : 215  
Last Calib. Date : 10-Jun-2005  
Frequency : 5200.00 MHz  
Duty Cycle Factor: 1  
Conversion Factor: 2.8  
Probe Sensitivity: 1.20 1.20 1.20  $\mu\text{V}/(\text{V}/\text{m})^2$   
Compression Point: 95.00 mV  
Offset : 1.56 mm

Measurement Data

Crest Factor : 1  
 Scan Type : Complete  
 Tissue Temp. : 20.00 °C  
 Ambient Temp. : 22.00 °C  
 Set-up Date : 17-Mar-2006  
 Set-up Time : 12:29:43 PM  
 Area Scan : 6x6x1 : Measurement x=10mm, y=10mm, z=4mm  
 Zoom Scan : 5x5x8 : Measurement x=8mm, y=8mm, z=4mm

Other Data

DUT Position : Back  
 Separation : 0  
 Channel : Mid - 58



1 gram SAR value : 0.393 W/kg  
 10 gram SAR value : 0.276 W/kg  
 Area Scan Peak SAR : 0.388 W/kg  
 Zoom Scan Peak SAR : 0.760 W/kg

## SAR Test Report

By Operator : Jay  
Measurement Date : 14-Mar-2006  
Starting Time : 14-Mar-2006 11:57:38 AM  
End Time : 14-Mar-2006 12:20:43 PM  
Scanning Time : 1385 secs

### Product Data

Device Name : Motion Computing  
Serial No. : 20302464  
Type : Other  
Model : TS01  
Frequency : 5200.00 MHz  
Max. Transmit Pwr : 0.025 W  
Drift Time : 0 min(s)  
Length : 228 mm  
Width : 170 mm  
Depth : 23 mm  
Antenna Type : Internal - Main  
Orientation : Front  
Power Drift-Start : 0.175 W/kg  
Power Drift-Finish: 0.181 W/kg  
Power Drift (%) : 3.429

### Phantom Data

Name : APREL-Uni  
Type : Uni-Phantom  
Size (mm) : 280 x 280 x 200  
Serial No. : System Default  
Location : Center  
Description : Uni-Phantom

### Tissue Data

Type : BODY  
Serial No. : 5200  
Frequency : 5200.00 MHz  
Last Calib. Date : 14-Mar-2006  
Temperature : 20.00 °C  
Ambient Temp. : 22.00 °C  
Humidity : 42.00 RH%  
Epsilon : 48.00 F/m  
Sigma : 5.43 S/m  
Density : 1000.00 kg/cu. m

### Probe Data

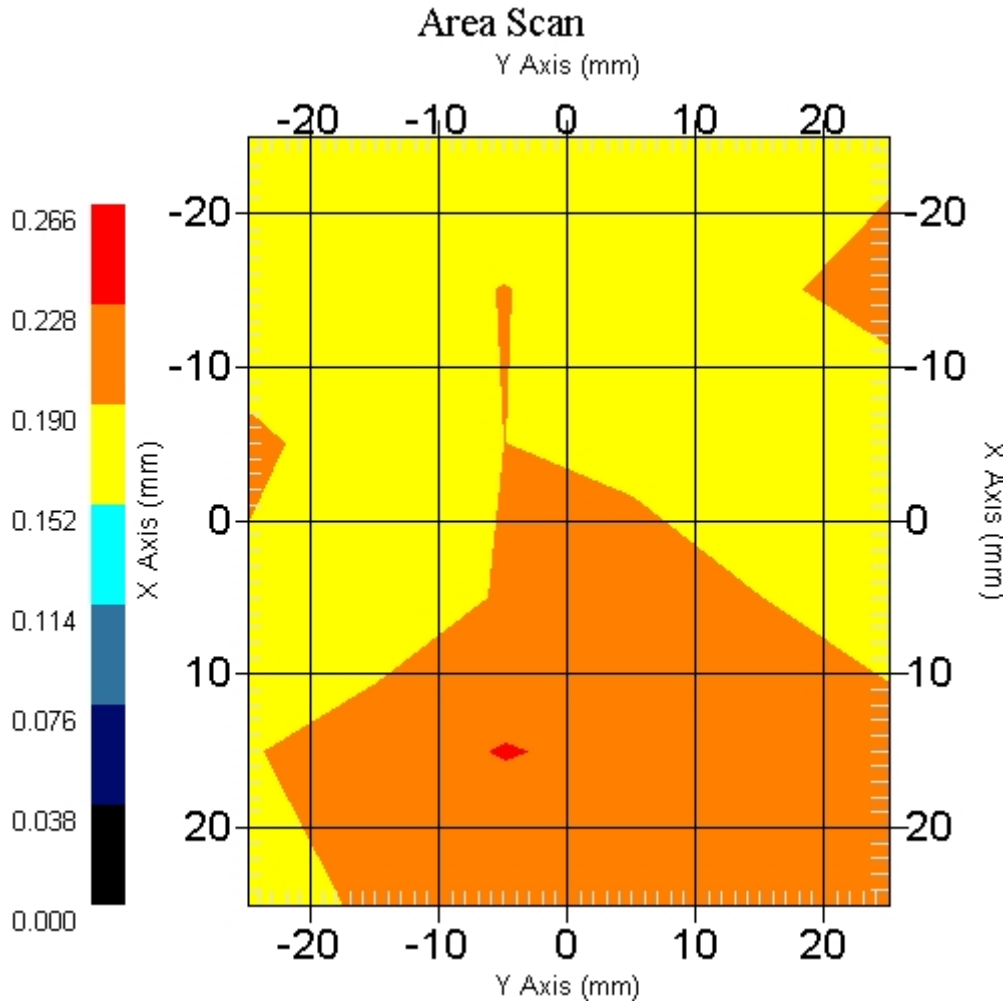
Name : Probe 215 - RFEL  
Model : E020  
Type : E-Field Triangle  
Serial No. : 215  
Last Calib. Date : 10-Jun-2005  
Frequency : 5200.00 MHz  
Duty Cycle Factor: 1  
Conversion Factor: 2.8  
Probe Sensitivity: 1.20 1.20 1.20  $\mu\text{V}/(\text{V}/\text{m})^2$   
Compression Point: 95.00 mV  
Offset : 1.56 mm

Measurement Data

Crest Factor : 1  
 Scan Type : Complete  
 Tissue Temp. : 20.00 °C  
 Ambient Temp. : 22.00 °C  
 Set-up Date : 14-Mar-2006  
 Set-up Time : 5:06:13 PM  
 Area Scan : 6x6x1 : Measurement x=10mm, y=10mm, z=4mm  
 Zoom Scan : 5x5x8 : Measurement x=8mm, y=8mm, z=4mm

Other Data

DUT Position : Front  
 Separation : 0  
 Channel : Low - 52



1 gram SAR value : 0.221 W/kg  
 10 gram SAR value : 0.199 W/kg  
 Area Scan Peak SAR : 0.230 W/kg  
 Zoom Scan Peak SAR : 0.080 W/kg