

#05 802.11n_20M_Bottom_0cm_Ch6_Antenna A

DUT: 051224

Communication System: Wifi; Frequency: 2437 MHz; Duty Cycle: 1:1

Medium: MSL_2450_100518 Medium parameters used: $f = 2437$ MHz; $\sigma = 1.95$ mho/m; $\epsilon_r = 54.1$; $\rho = 1000$ kg/m³

Ambient Temperature : 23.5 °C; Liquid Temperature : 21.3 °C

DASY5 Configuration:

- Probe: EX3DV4 - SN3697; ConvF(6.84, 6.84, 6.84); Calibrated: 2009/11/23
- Sensor-Surface: 4mm (Mechanical Surface Detection)
- Electronics: DAE4 Sn1210; Calibrated: 2009/11/16
- Phantom: SAM3; Type: QD OVA 001 BB; Serial: 1079
- Measurement SW : DASY5, V5.2 Build 162; SEMCAD X Version 14.0 Build 57

Ch6/Area Scan (161x221x1): Measurement grid: dx=15mm, dy=15mm

Maximum value of SAR (interpolated) = 0.542 mW/g

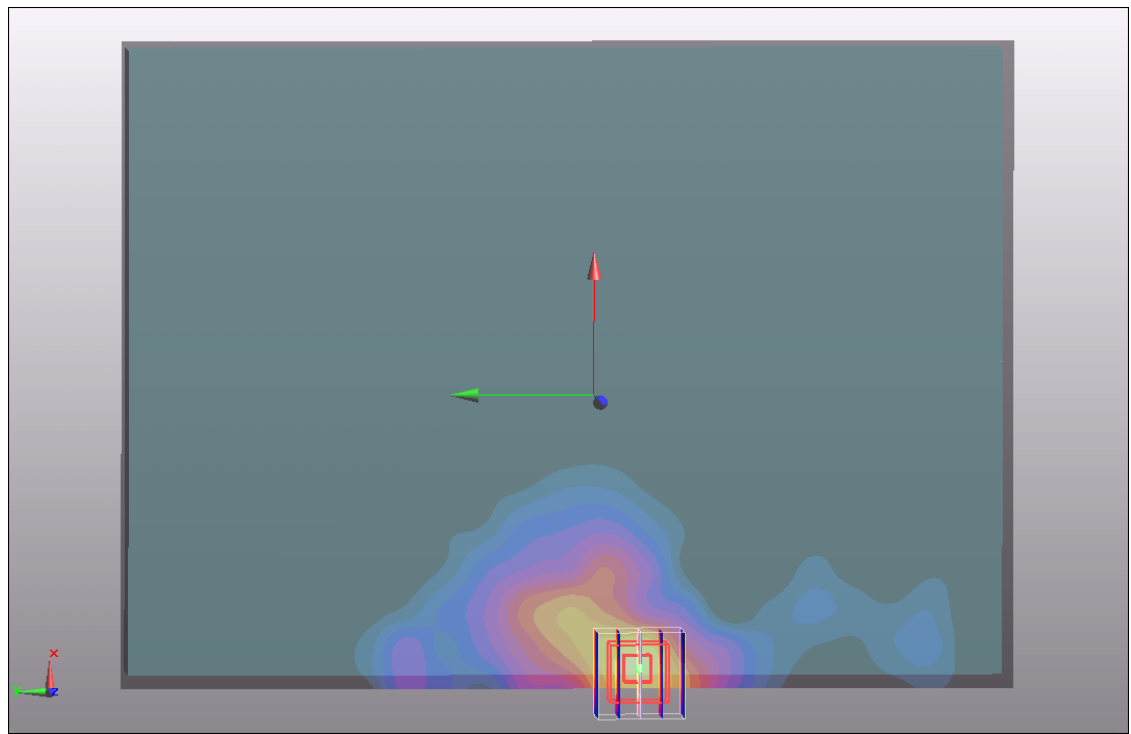
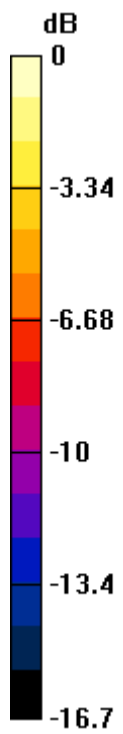
Ch6/Zoom Scan (5x5x7)/Cube 0: Measurement grid: dx=8mm, dy=8mm, dz=5mm

Reference Value = 2.4 V/m; Power Drift = 0.122 dB

Peak SAR (extrapolated) = 1.54 W/kg

SAR(1 g) = 0.684 mW/g; SAR(10 g) = 0.295 mW/g

Maximum value of SAR (measured) = 0.778 mW/g



0 dB = 0.778mW/g

#05 802.11n_20M_Bottom_0cm_Ch6_Antenna A_2D

DUT: 051224

Communication System: Wifi; Frequency: 2437 MHz; Duty Cycle: 1:1

Medium: MSL_2450_100518 Medium parameters used: $f = 2437$ MHz; $\sigma = 1.95$ mho/m; $\epsilon_r = 54.1$; $\rho = 1000$ kg/m³

Ambient Temperature : 23.5 °C; Liquid Temperature : 21.3 °C

DASY5 Configuration:

- Probe: EX3DV4 - SN3697; ConvF(6.84, 6.84, 6.84); Calibrated: 2009/11/23
- Sensor-Surface: 4mm (Mechanical Surface Detection)
- Electronics: DAE4 Sn1210; Calibrated: 2009/11/16
- Phantom: SAM3; Type: QD OVA 001 BB; Serial: 1079
- Measurement SW : DASY5, V5.2 Build 162; SEMCAD X Version 14.0 Build 57

Ch6/Area Scan (161x221x1): Measurement grid: dx=15mm, dy=15mm

Maximum value of SAR (interpolated) = 0.542 mW/g

Ch6/Zoom Scan (5x5x7)/Cube 0: Measurement grid: dx=8mm, dy=8mm, dz=5mm

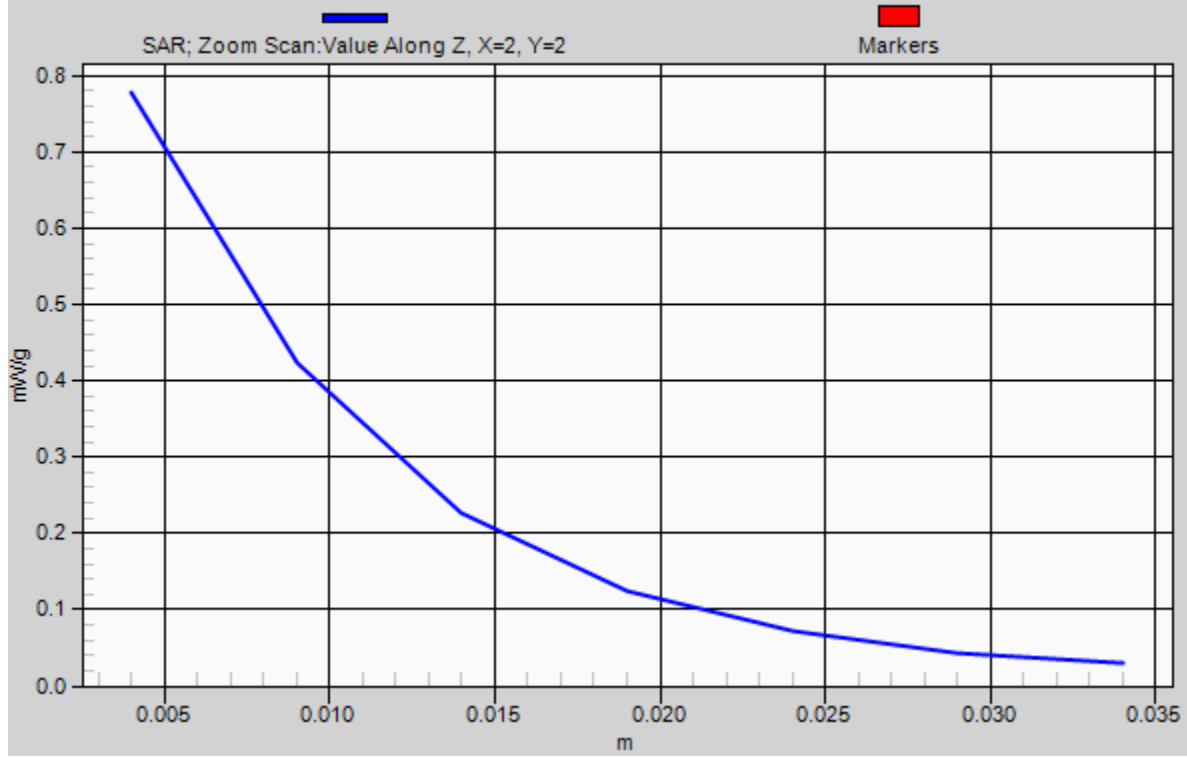
Reference Value = 2.4 V/m; Power Drift = 0.122 dB

Peak SAR (extrapolated) = 1.54 W/kg

SAR(1 g) = 0.684 mW/g; SAR(10 g) = 0.295 mW/g

Maximum value of SAR (measured) = 0.778 mW/g

1g/10g Averaged SAR



#14 802.11n_20M_Primary Landscape_0cm_Ch6_Antenna C

DUT: 051224

Communication System: Wifi; Frequency: 2437 MHz; Duty Cycle: 1:1

Medium: MSL_2450_100518 Medium parameters used: $f = 2437$ MHz; $\sigma = 1.95$ mho/m; $\epsilon_r = 54.1$; $\rho = 1000$ kg/m³

Ambient Temperature : 23.5 °C; Liquid Temperature : 21.3 °C

DASY5 Configuration:

- Probe: EX3DV4 - SN3697; ConvF(6.84, 6.84, 6.84); Calibrated: 2009/11/23
- Sensor-Surface: 4mm (Mechanical Surface Detection)
- Electronics: DAE4 Sn1210; Calibrated: 2009/11/16
- Phantom: SAM3; Type: QD OVA 001 BB; Serial: 1079
- Measurement SW : DASY5, V5.2 Build 162; SEMCAD X Version 14.0 Build 57

Ch6/Area Scan (41x261x1): Measurement grid: dx=15mm, dy=15mm

Maximum value of SAR (interpolated) = 0.063 mW/g

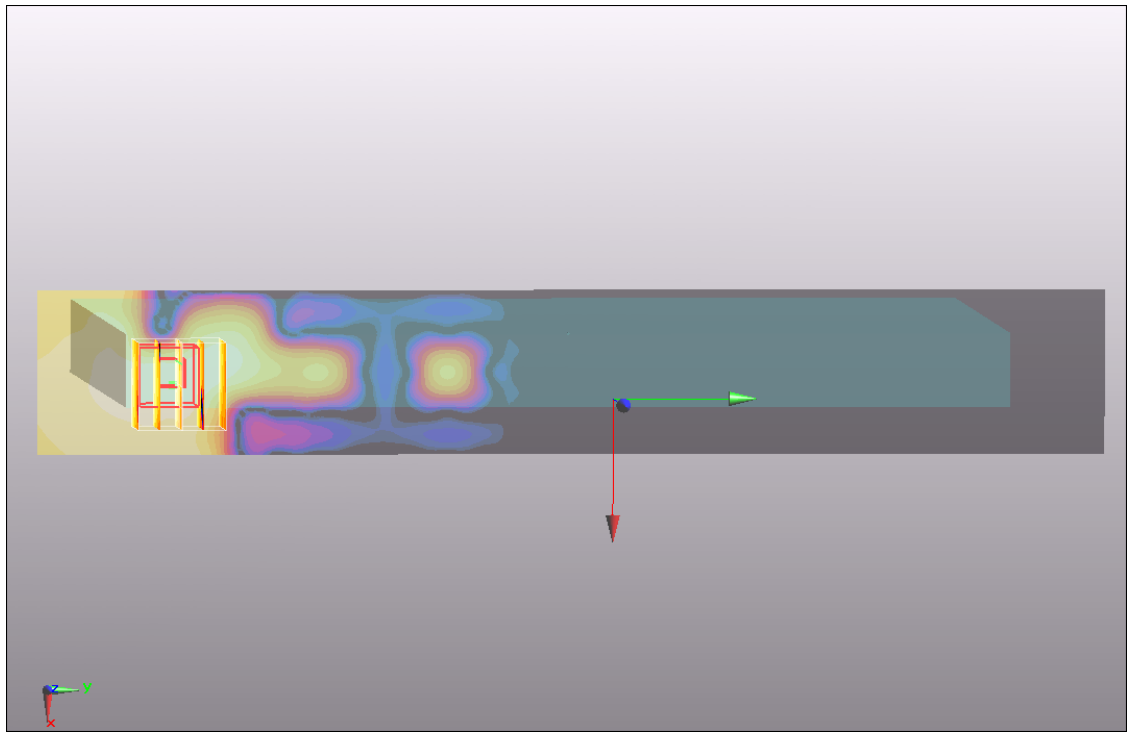
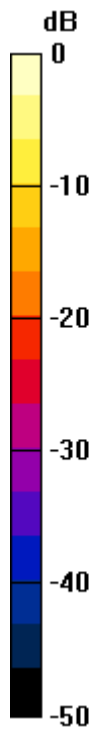
Ch6/Zoom Scan (5x5x7)/Cube 0: Measurement grid: dx=8mm, dy=8mm, dz=5mm

Reference Value = 0.853 V/m; Power Drift = 0.077 dB

Peak SAR (extrapolated) = 0.069 W/kg

SAR(1 g) = 0.041 mW/g; SAR(10 g) = 0.021 mW/g

Maximum value of SAR (measured) = 0.044 mW/g



0 dB = 0.044mW/g

#13 802.11n_20M_Secondary Portrait_0cm_Ch6_Antenna B

DUT: 051224

Communication System: Wifi; Frequency: 2437 MHz; Duty Cycle: 1:1

Medium: MSL_2450_100518 Medium parameters used: $f = 2437$ MHz; $\sigma = 1.95$ mho/m; $\epsilon_r = 54.1$; $\rho = 1000$ kg/m³

Ambient Temperature : 23.5 °C; Liquid Temperature : 21.3 °C

DASY5 Configuration:

- Probe: EX3DV4 - SN3697; ConvF(6.84, 6.84, 6.84); Calibrated: 2009/11/23
- Sensor-Surface: 4mm (Mechanical Surface Detection)
- Electronics: DAE4 Sn1210; Calibrated: 2009/11/16
- Phantom: SAM3; Type: QD OVA 001 BB; Serial: 1079
- Measurement SW : DASY5, V5.2 Build 162; SEMCAD X Version 14.0 Build 57

Ch6/Area Scan (41x181x1): Measurement grid: dx=15mm, dy=15mm

Maximum value of SAR (interpolated) = 0.033 mW/g

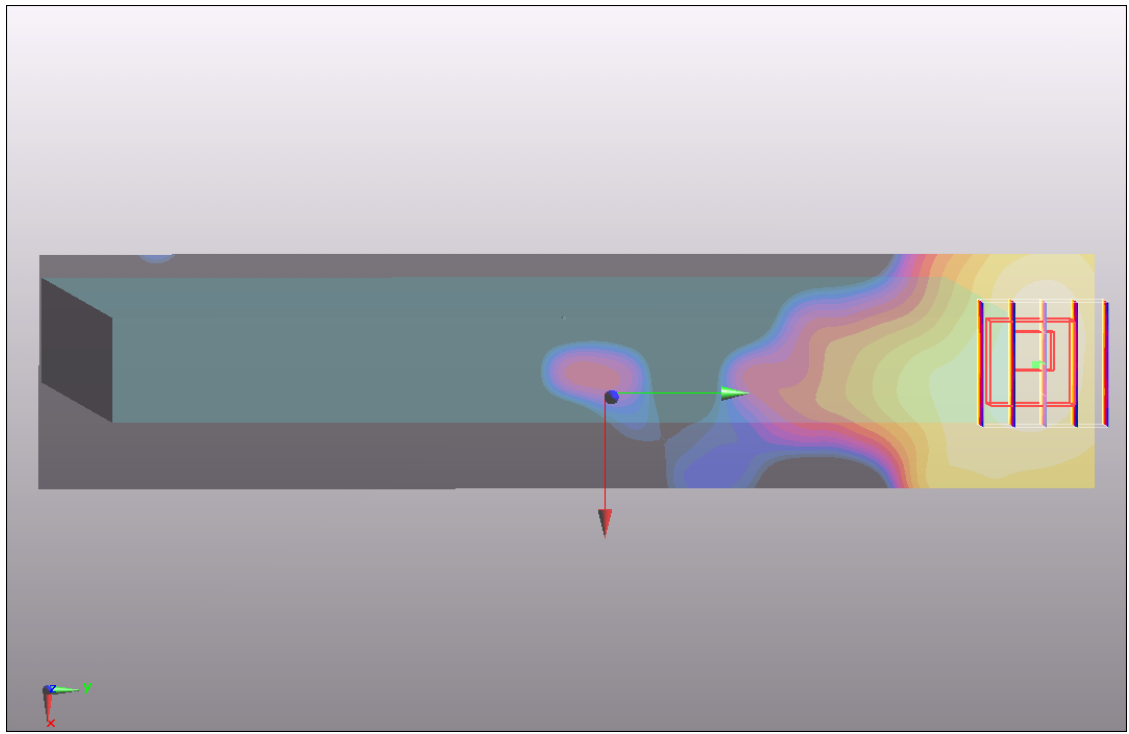
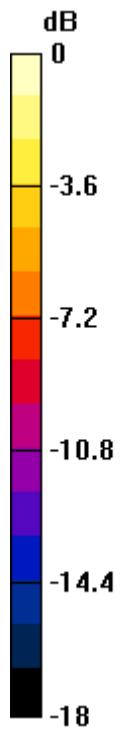
Ch6/Zoom Scan (5x5x7)/Cube 0: Measurement grid: dx=8mm, dy=8mm, dz=5mm

Reference Value = 1.79 V/m; Power Drift = -0.153 dB

Peak SAR (extrapolated) = 0.051 W/kg

SAR(1 g) = 0.030 mW/g; SAR(10 g) = 0.018 mW/g

Maximum value of SAR (measured) = 0.033 mW/g



0 dB = 0.033mW/g

#21 802.11a_Bottom_0cm_Ch149_Antenna C

DUT: 051224

Communication System: 802.11a; Frequency: 5745 MHz; Duty Cycle: 1:1

Medium: MSL_5G_100520 Medium parameters used: $f = 5745$ MHz; $\sigma = 5.93$ mho/m; $\epsilon_r = 46.7$; $\rho = 1000$ kg/m³

Ambient Temperature : 22.4 °C; Liquid Temperature : 21.3 °C

DASY4 Configuration:

- Probe: EX3DV3 - SN3514; ConvF(3.9, 3.9, 3.9); Calibrated: 2010/1/26
- Sensor-Surface: 2mm (Mechanical Surface Detection)
- Electronics: DAE3 Sn577; Calibrated: 2009/8/24
- Phantom: ELI 4.0_Front; Type: QDOVA001BB; Serial: 1026
- Measurement SW: DASY4, V4.7 Build 80; Postprocessing SW: SEMCAD, V1.8 Build 186

Ch149/Area Scan (281x201x1): Measurement grid: dx=10mm, dy=10mm

Maximum value of SAR (interpolated) = 1.46 mW/g

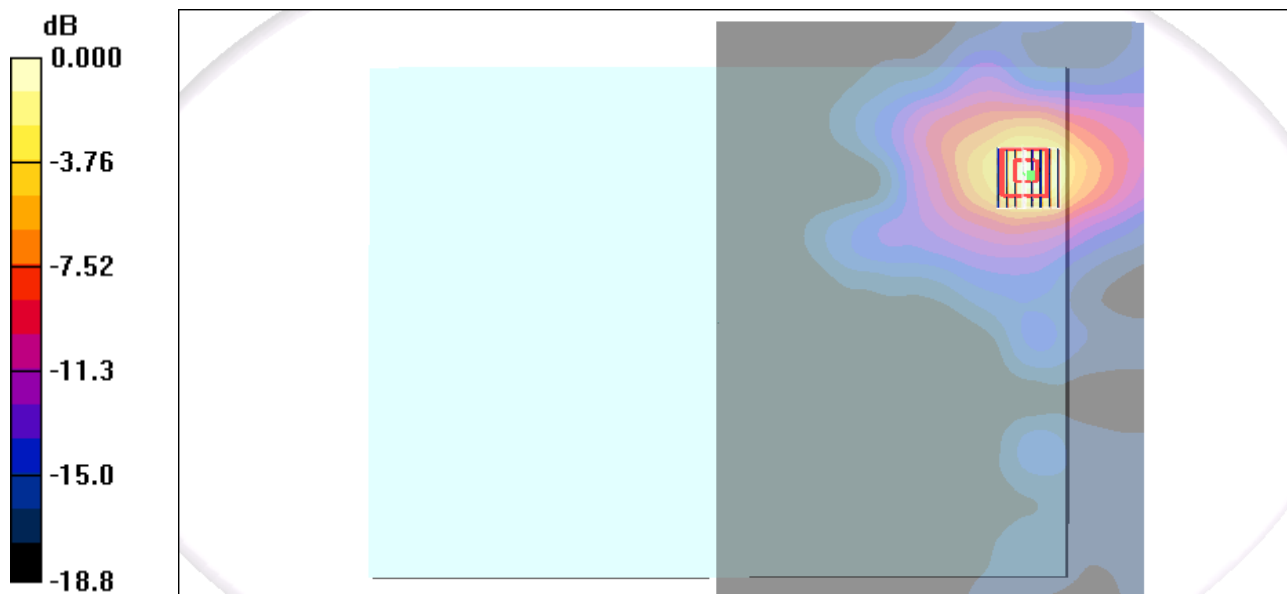
Ch149/Zoom Scan (8x8x10)/Cube 0: Measurement grid: dx=4mm, dy=4mm, dz=2.5mm

Reference Value = 1.74 V/m; Power Drift = 0.187 dB

Peak SAR (extrapolated) = 2.86 W/kg

SAR(1 g) = 0.875 mW/g; SAR(10 g) = 0.364 mW/g

Maximum value of SAR (measured) = 1.64 mW/g



0 dB = 1.64mW/g

#21 802.11a_Bottom_0cm_Ch149_Antenna C_2D

DUT: 051224

Communication System: 802.11a; Frequency: 5745 MHz; Duty Cycle: 1:1

Medium: MSL_5G_100520 Medium parameters used: $f = 5745 \text{ MHz}$; $\sigma = 5.93 \text{ mho/m}$; $\epsilon_r = 46.7$; $\rho = 1000 \text{ kg/m}^3$

Ambient Temperature : 22.4 °C ; Liquid Temperature : 21.3 °C

DASY4 Configuration:

- Probe: EX3DV3 - SN3514; ConvF(3.9, 3.9, 3.9); Calibrated: 2010/1/26
- Sensor-Surface: 2mm (Mechanical Surface Detection)
- Electronics: DAE3 Sn577; Calibrated: 2009/8/24
- Phantom: ELI 4.0_Front; Type: QDOVA001BB; Serial: 1026
- Measurement SW: DASY4, V4.7 Build 80; Postprocessing SW: SEMCAD, V1.8 Build 186

Ch149/Area Scan (281x201x1): Measurement grid: dx=10mm, dy=10mm

Maximum value of SAR (interpolated) = 1.46 mW/g

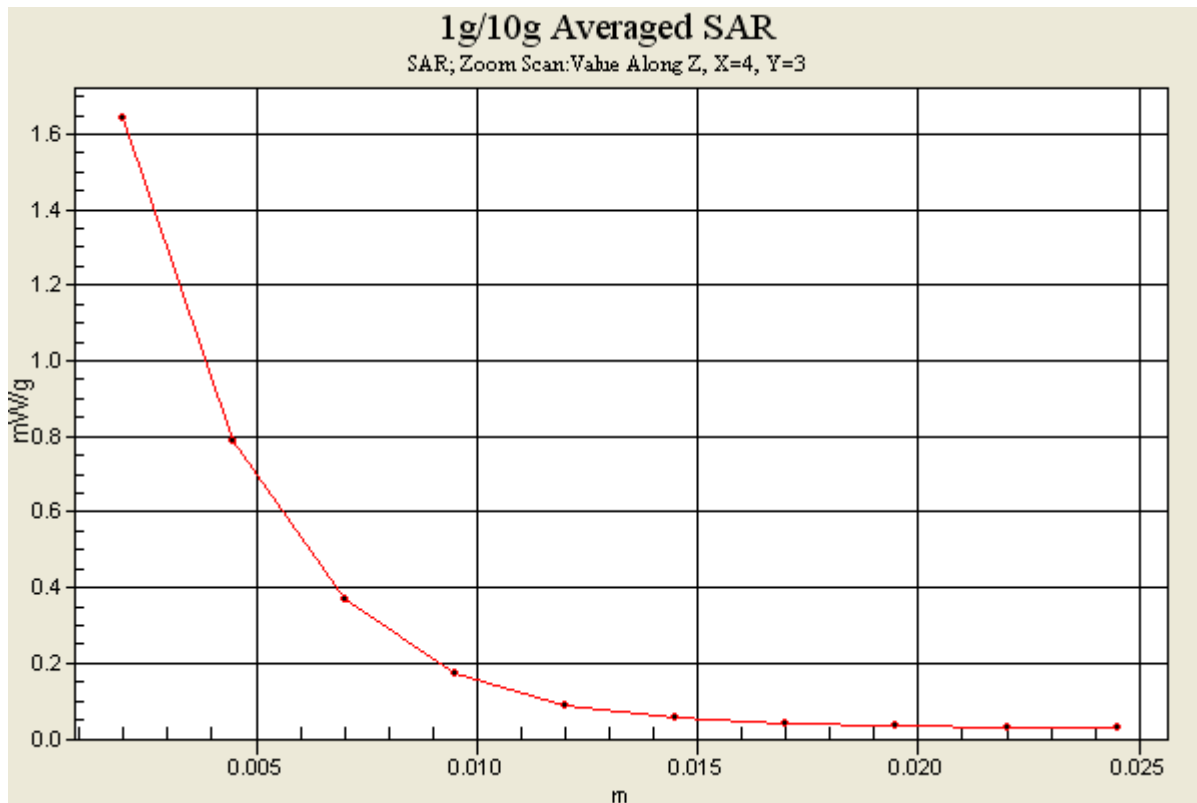
Ch149/Zoom Scan (8x8x10)/Cube 0: Measurement grid: dx=4mm, dy=4mm, dz=2.5mm

Reference Value = 1.74 V/m; Power Drift = 0.187 dB

Peak SAR (extrapolated) = 2.86 W/kg

SAR(1 g) = 0.875 mW/g; SAR(10 g) = 0.364 mW/g

Maximum value of SAR (measured) = 1.64 mW/g



#12 802.11a_Primary Landscape_0cm_Ch36_Antenna C

DUT: 051224

Communication System: 802.11a; Frequency: 5180 MHz; Duty Cycle: 1:1

Medium: MSL_5G_100519 Medium parameters used : $f = 5180$ MHz; $\sigma = 5.23$ mho/m; $\epsilon_r = 47.6$; $\rho = 1000$ kg/m³

Ambient Temperature : 22.6 °C ; Liquid Temperature : 21.4 °C

DASY4 Configuration:

- Probe: EX3DV3 - SN3514; ConvF(4.27, 4.27, 4.27); Calibrated: 2010/1/26
- Sensor-Surface: 2mm (Mechanical Surface Detection)
- Electronics: DAE3 Sn577; Calibrated: 2009/8/24
- Phantom: ELI 4.0_Front; Type: QDOVA001BB; Serial: 1026
- Measurement SW: DASY4, V4.7 Build 80; Postprocessing SW: SEMCAD, V1.8 Build 186

Ch36/Area Scan (101x401x1): Measurement grid: dx=10mm, dy=10mm

Maximum value of SAR (interpolated) = 0.082 mW/g

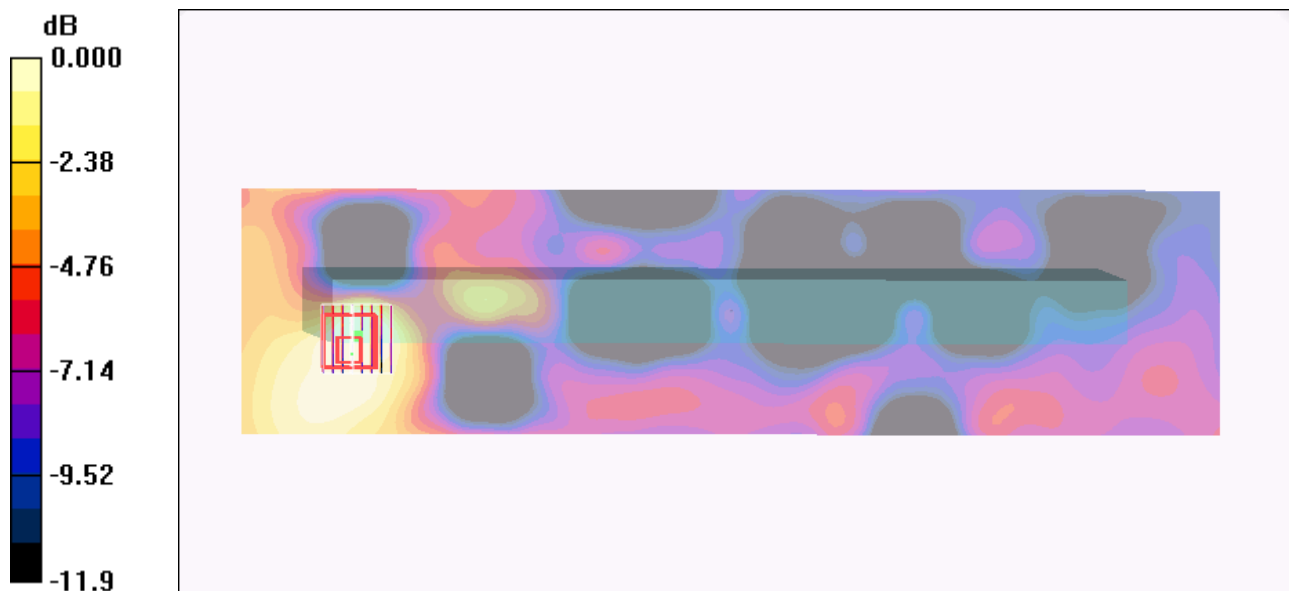
Ch36/Zoom Scan (8x8x10)/Cube 0: Measurement grid: dx=4mm, dy=4mm, dz=2.5mm

Reference Value = 1.57 V/m; Power Drift = 0.105 dB

Peak SAR (extrapolated) = 0.104 W/kg

SAR(1 g) = 0.041 mW/g; SAR(10 g) = 0.023 mW/g

Maximum value of SAR (measured) = 0.065 mW/g



#13 802.11a_Secondary Portrait_0cm_Ch36_Antenna B

DUT: 051224

Communication System: 802.11a; Frequency: 5180 MHz; Duty Cycle: 1:1

Medium: MSL_5G_100519 Medium parameters used : $f = 5180$ MHz; $\sigma = 5.23$ mho/m; $\epsilon_r = 47.6$; $\rho = 1000$ kg/m³

Ambient Temperature : 22.6 °C ; Liquid Temperature : 21.4 °C

DASY4 Configuration:

- Probe: EX3DV3 - SN3514; ConvF(4.27, 4.27, 4.27); Calibrated: 2010/1/26
- Sensor-Surface: 2mm (Mechanical Surface Detection)
- Electronics: DAE3 Sn577; Calibrated: 2009/8/24
- Phantom: ELI 4.0_Front; Type: QDOVA001BB; Serial: 1026
- Measurement SW: DASY4, V4.7 Build 80; Postprocessing SW: SEMCAD, V1.8 Build 186

Ch36/Area Scan (131x351x1): Measurement grid: dx=10mm, dy=10mm

Maximum value of SAR (interpolated) = 0.068 mW/g

Ch36/Zoom Scan (8x8x10)/Cube 0: Measurement grid: dx=4mm, dy=4mm, dz=2.5mm

Reference Value = 1.74 V/m; Power Drift = 0.149 dB

Peak SAR (extrapolated) = 0.108 W/kg

SAR(1 g) = 0.048 mW/g; SAR(10 g) = 0.034 mW/g

Maximum value of SAR (measured) = 0.071 mW/g

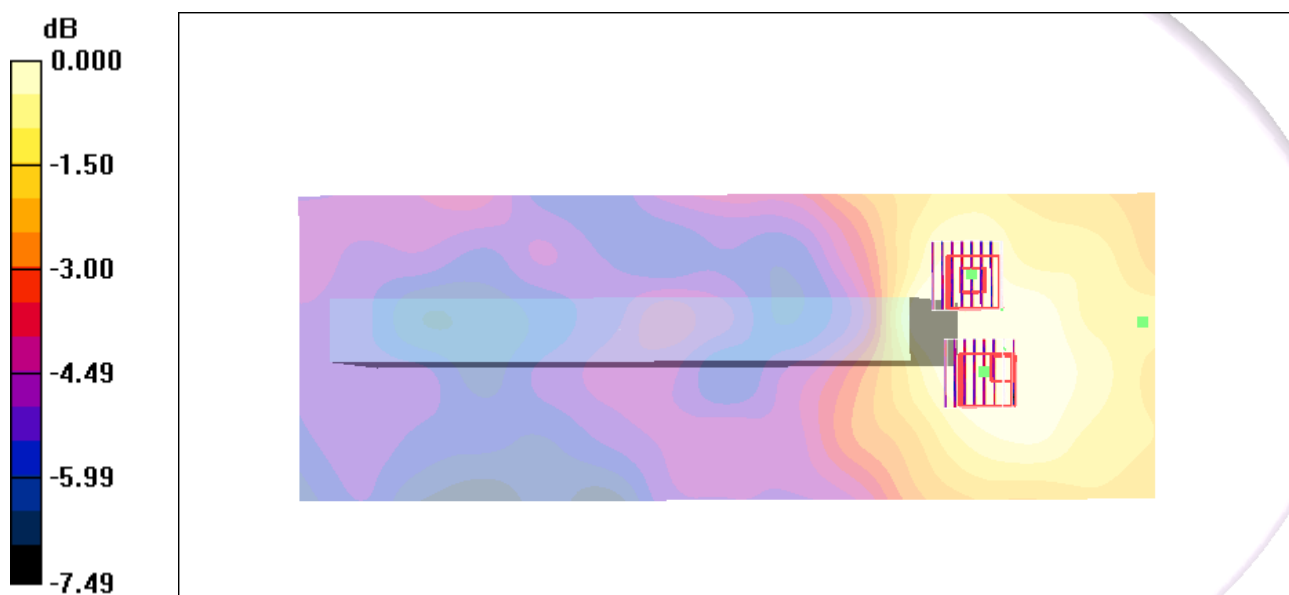
Ch36/Zoom Scan (8x8x10)/Cube 1: Measurement grid: dx=4mm, dy=4mm, dz=2.5mm

Reference Value = 1.74 V/m; Power Drift = 0.149 dB

Peak SAR (extrapolated) = 0.105 W/kg

SAR(1 g) = 0.042 mW/g; SAR(10 g) = 0.030 mW/g

Maximum value of SAR (measured) = 0.063 mW/g



0 dB = 0.063mW/g