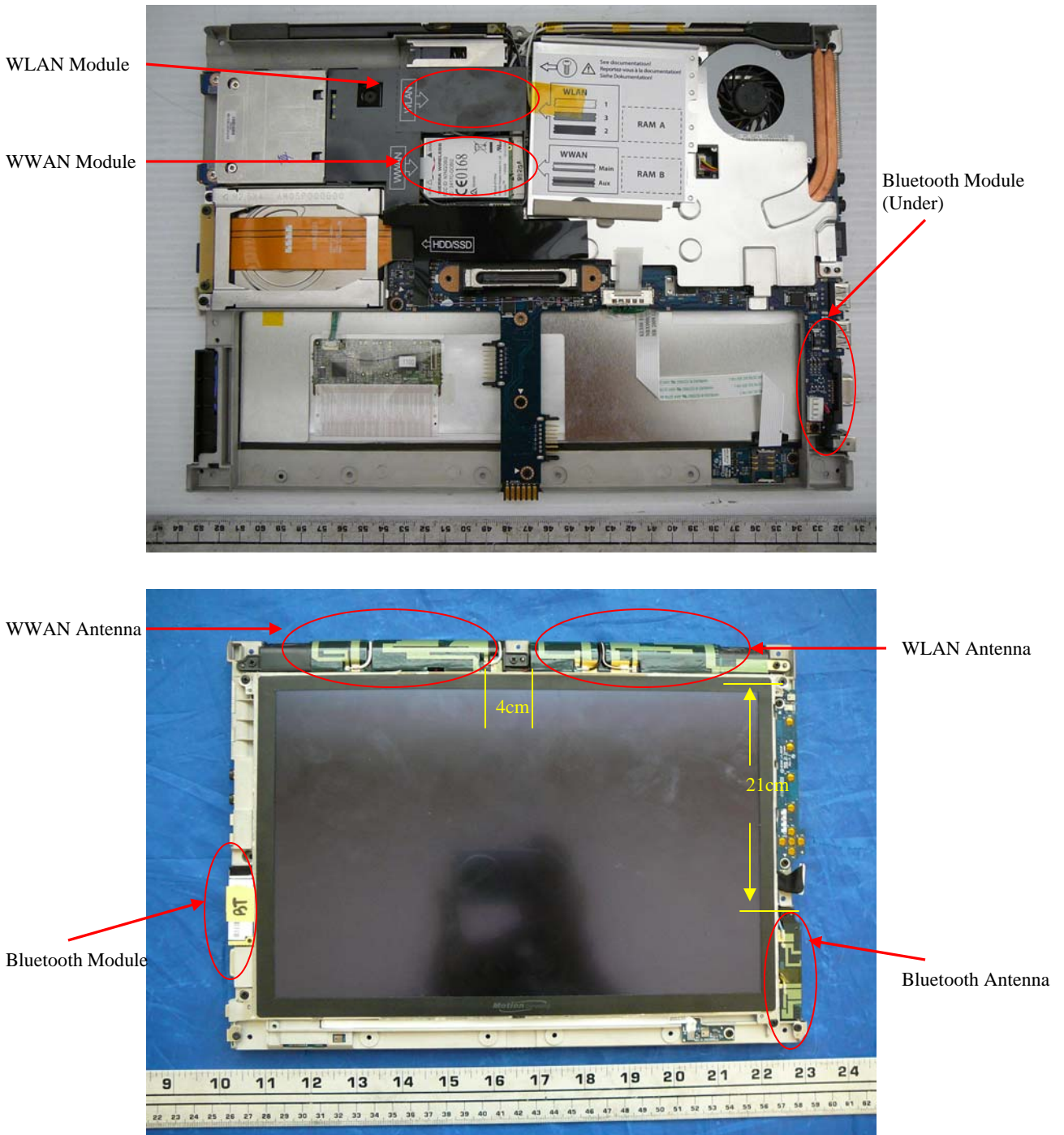


Module and Antenna Location as shown below:



The co-located antenna between WLAN and WWAN is 4cm, the manufacturer has implemented software that selects only one of the WLAN or WWAN transmitters once a transmit function is invoked. So, There is no simultaneous transmission possible from the two transmitters, thus, simultaneous SAR testing is not required. Please refer the (Non-Simultaneous TX Statement.pdf) file for mode detail descriptions.