



Figure 1: Top Side of PCBs As Installed

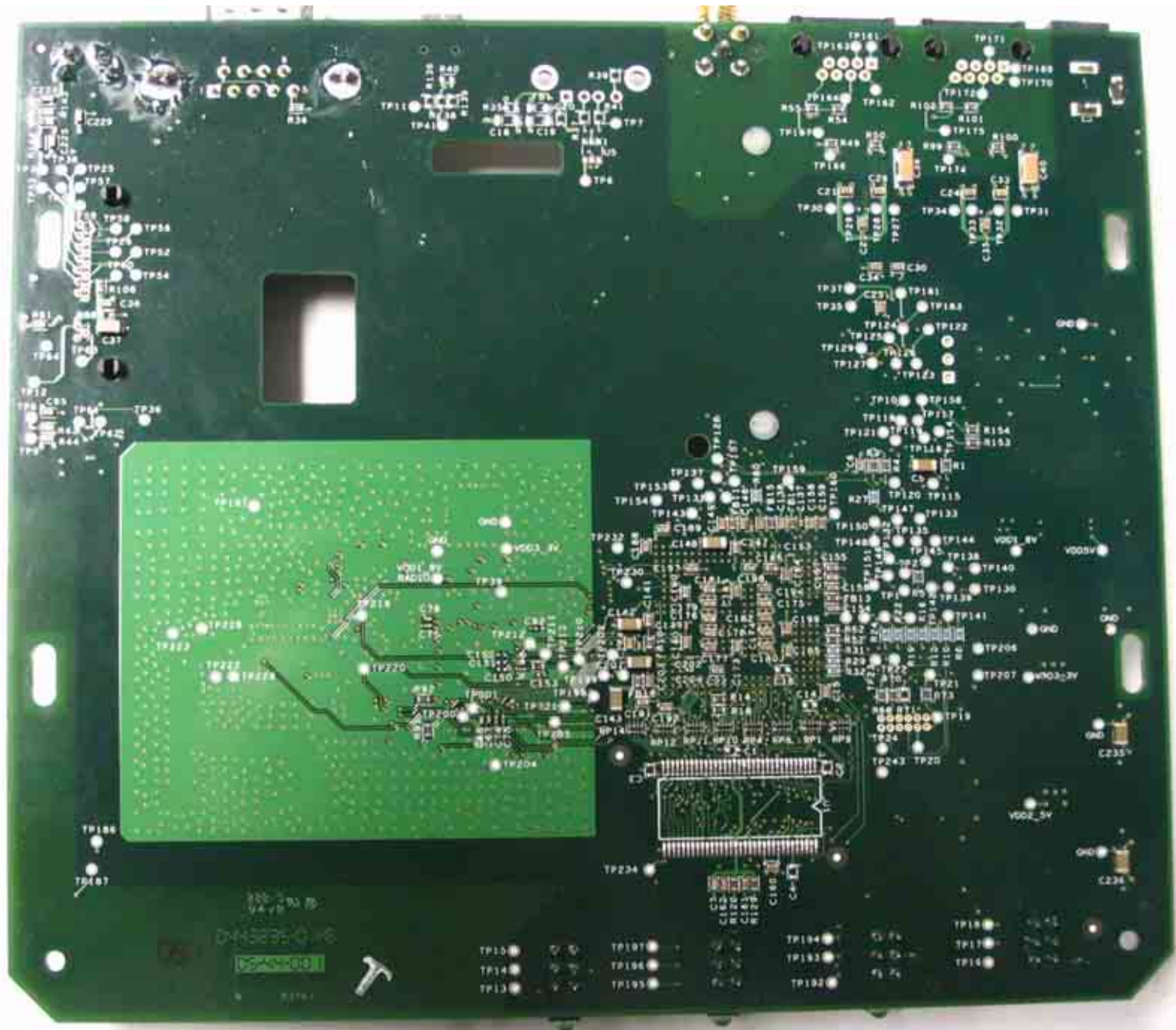


Figure 2: Bottom Side of Main PCB

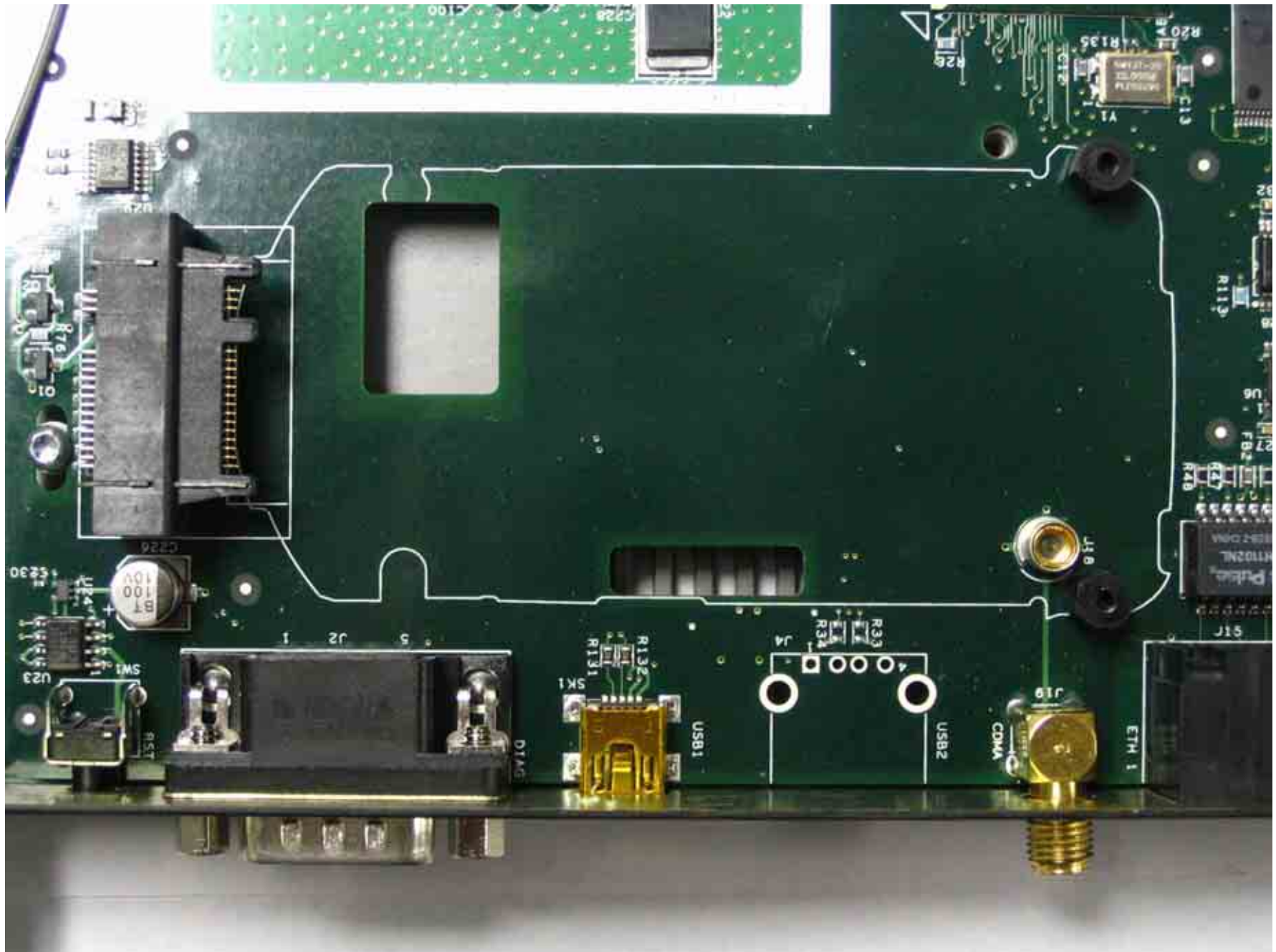


Figure 3: Top Side of Main PCB with Daughter Board Removed

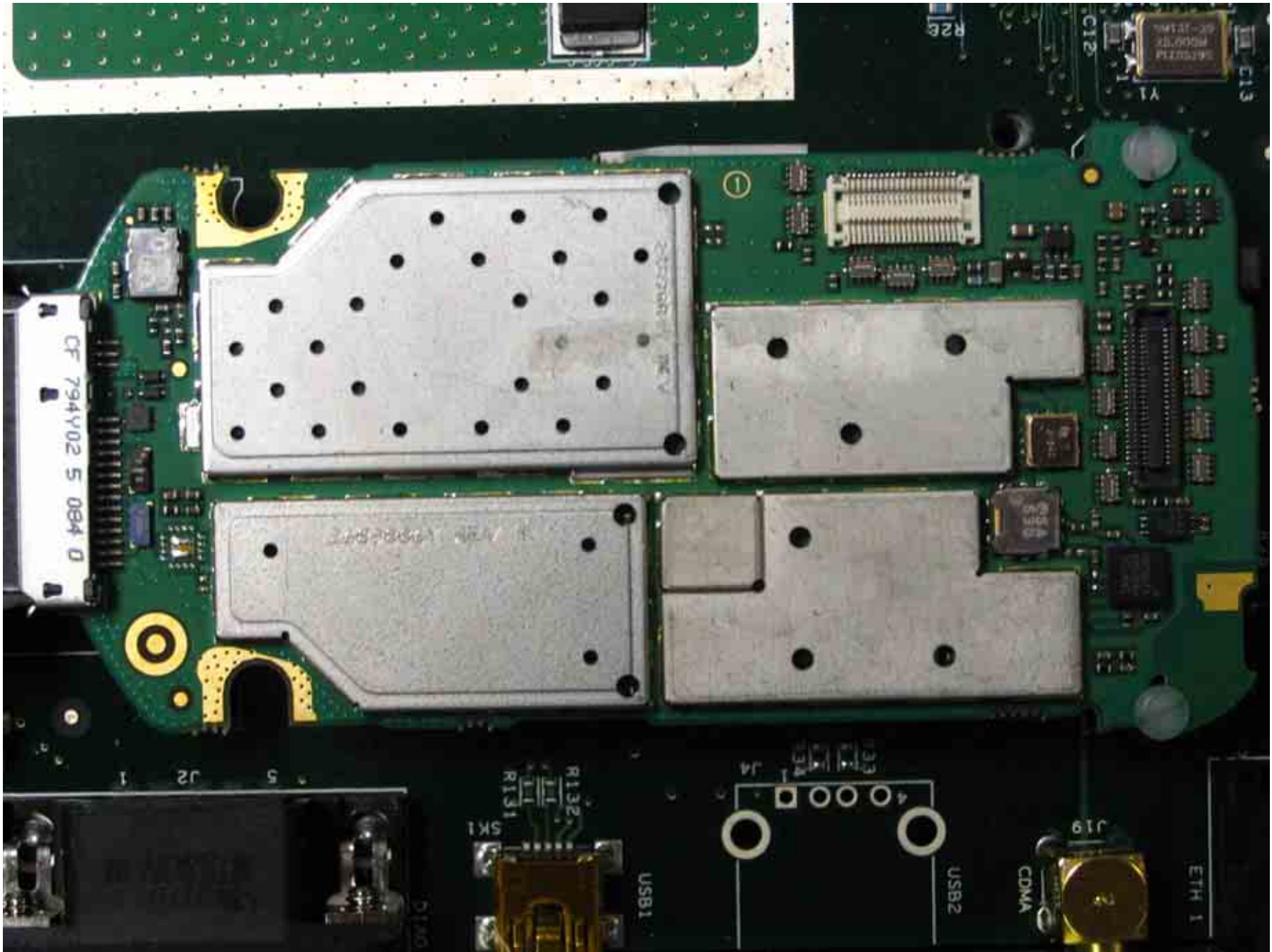


Figure 4: Top Side of Daughter Board

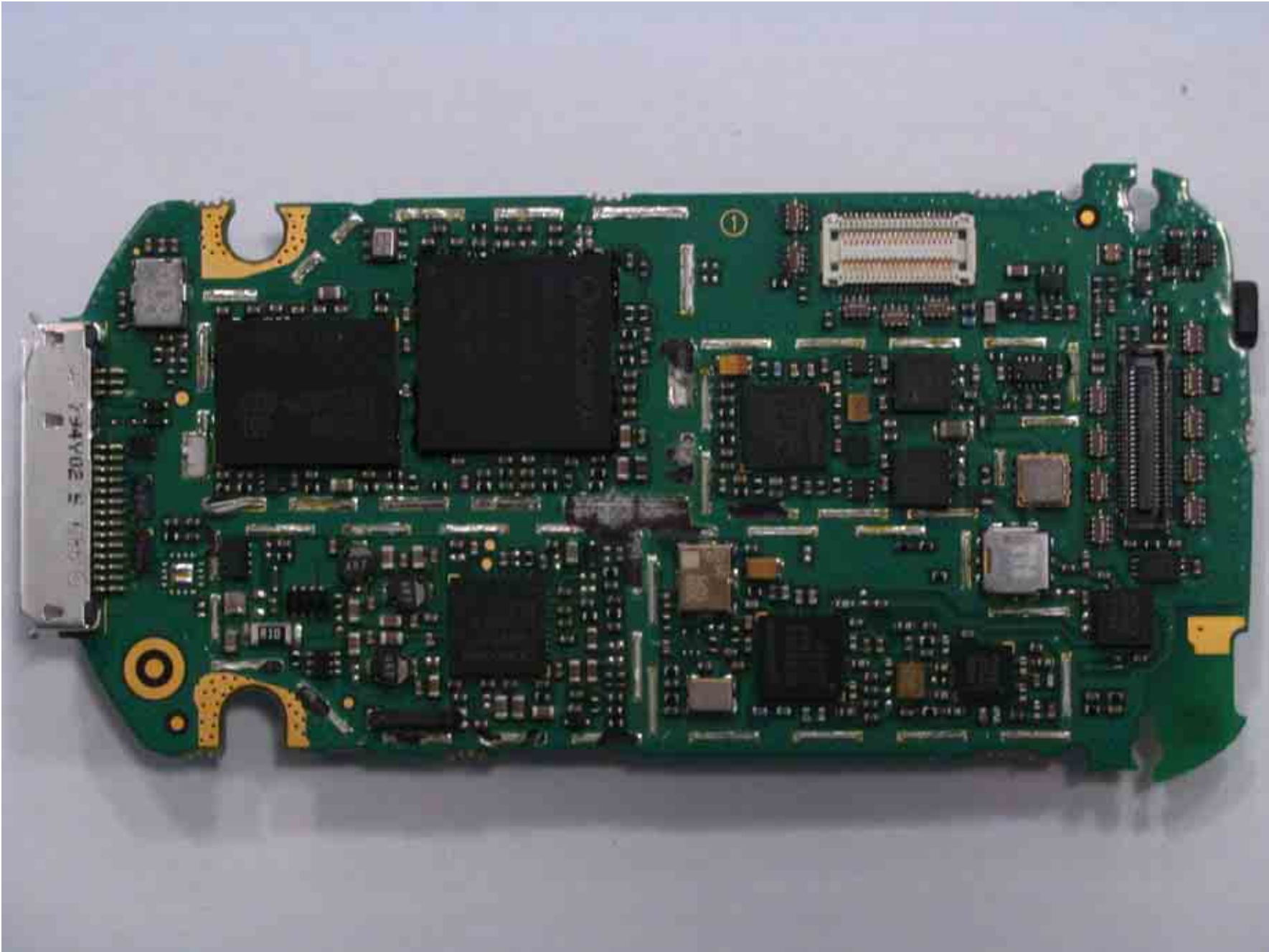


Figure 5: Top Side of Daughter Board With Shields Removed

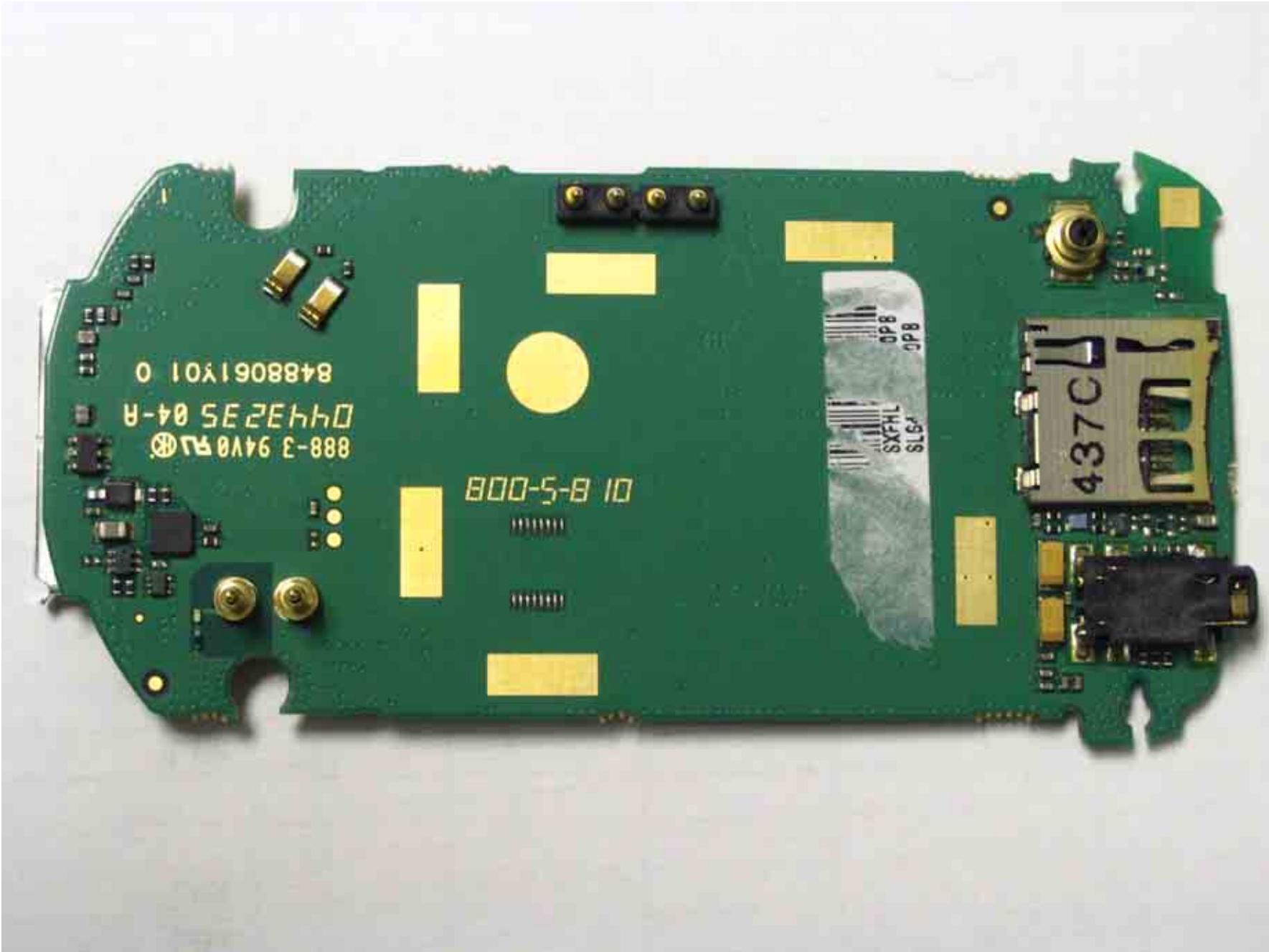


Figure 6: Bottom Side of Daughter Board