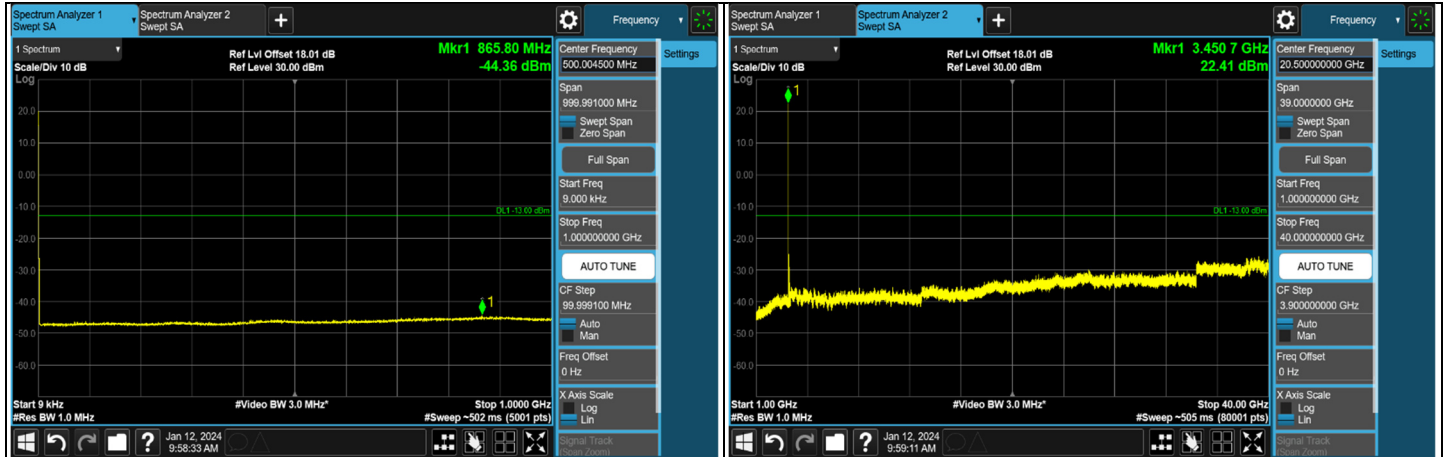


NR n78 SCS 30 kHz (3.45 GHz ~ 3.55 GHz) - MIMO Ant 5, Channel Bandwidth: 100 MHz

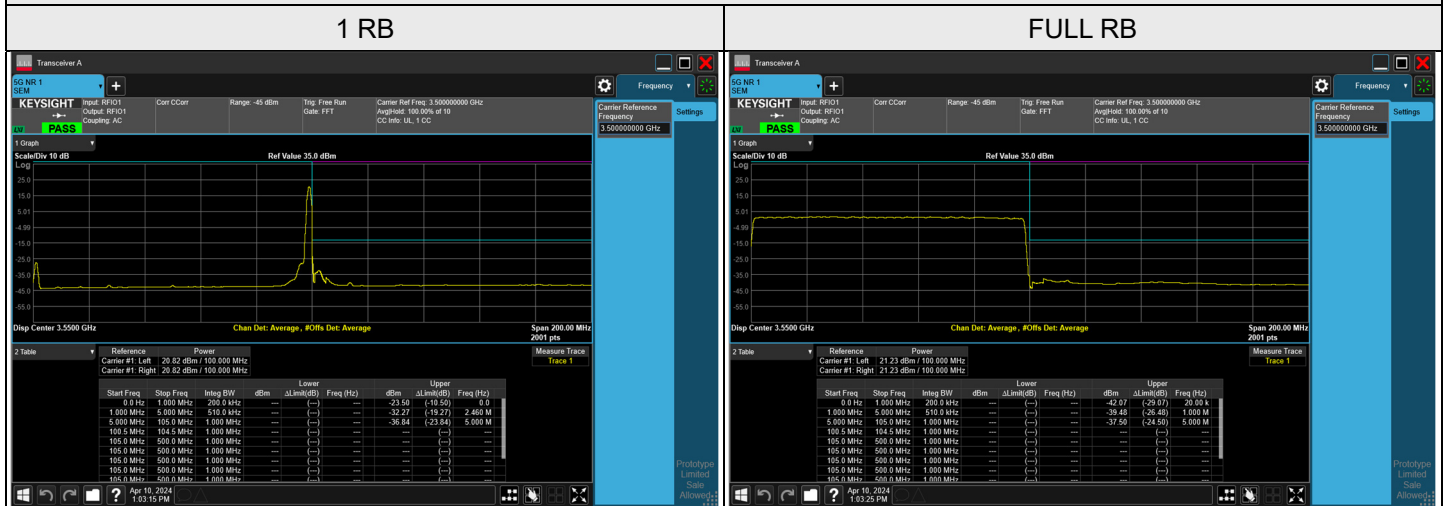


CH 633334 (3500.01 MHz)

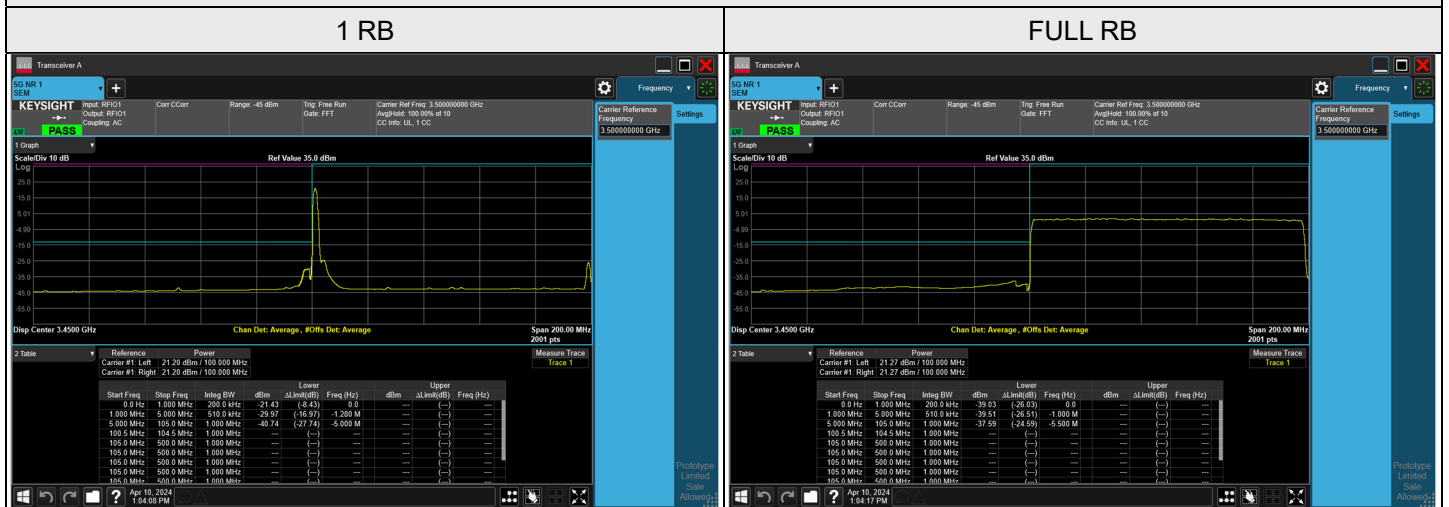
Note: The signal at 9 kHz is IF signal from spectrum analyzer.

NR n78 SCS 30 kHz (3.45 GHz ~ 3.55 GHz) - MIMO Ant 5, Channel Bandwidth: 100 MHz

CH 633334 (3500.01 MHz)



CH 633334 (3500.01 MHz)





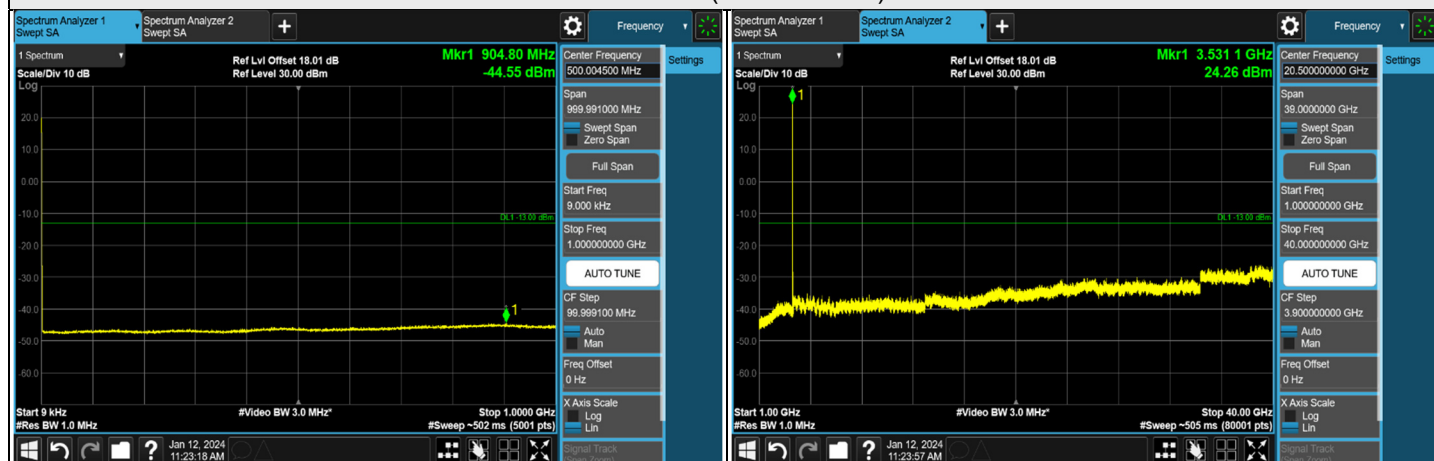
NR n78 SCS 30 kHz (3.45 GHz ~ 3.55 GHz) - MIMO Ant 7, Channel Bandwidth: 20 MHz



CH 630668 (3460.02 MHz)



CH 633334 (3500.01 MHz)



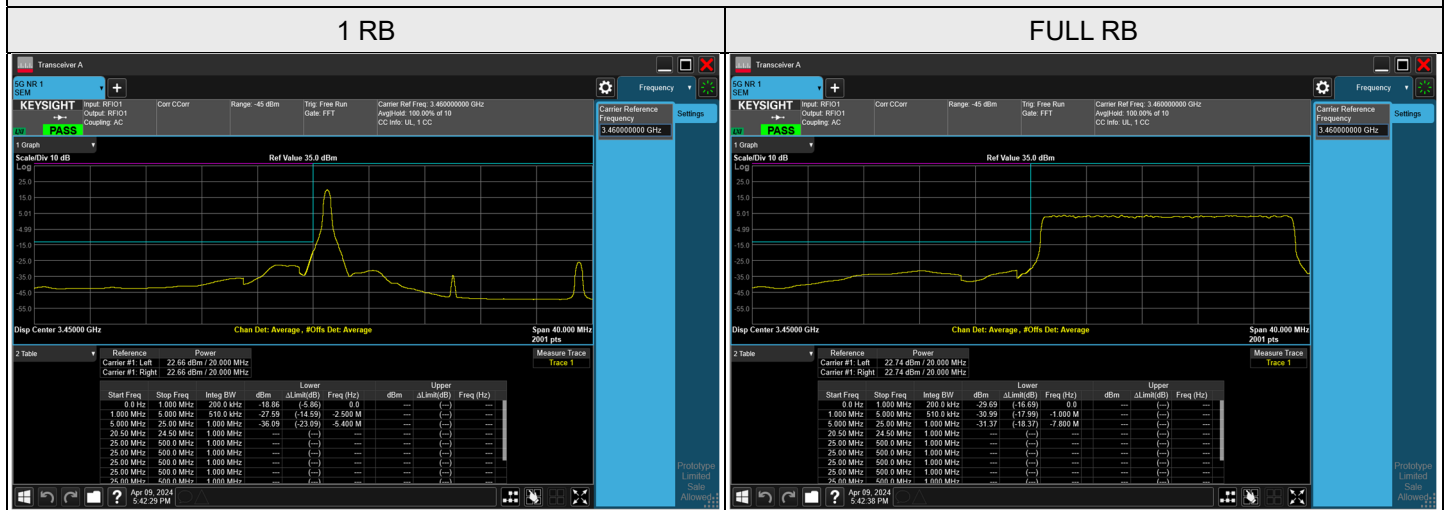
CH 636000 (3540 MHz)

Note: The signal at 9 kHz is IF signal from spectrum analyzer.

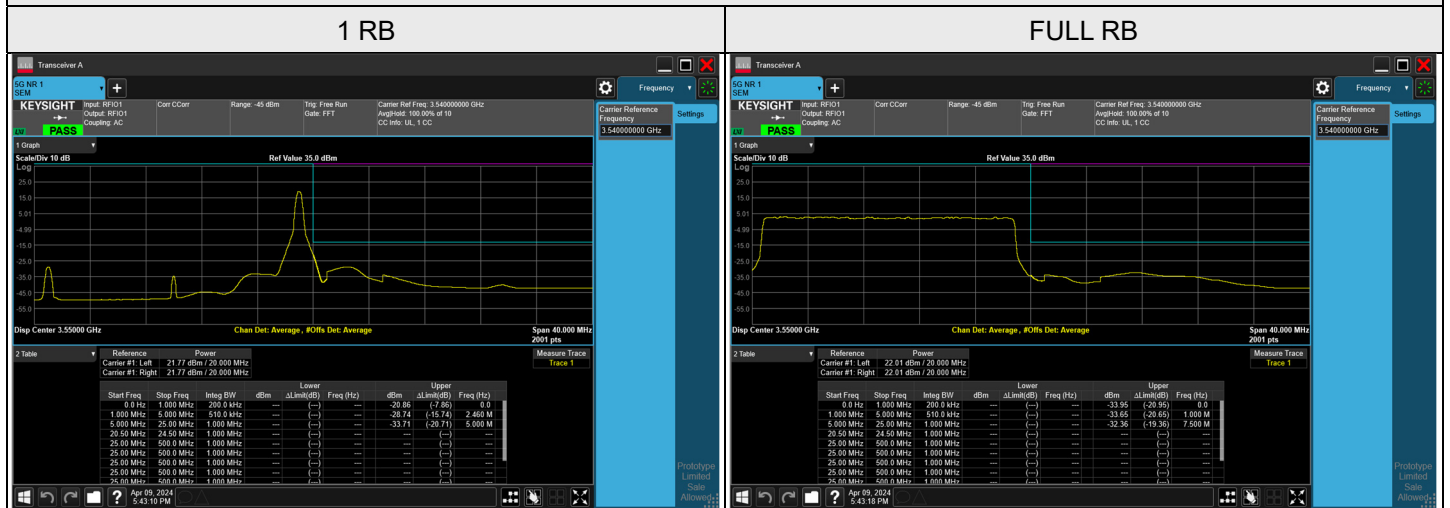


NR n78 SCS 30 kHz (3.45 GHz ~ 3.55 GHz) - MIMO Ant 7, Channel Bandwidth: 20 MHz

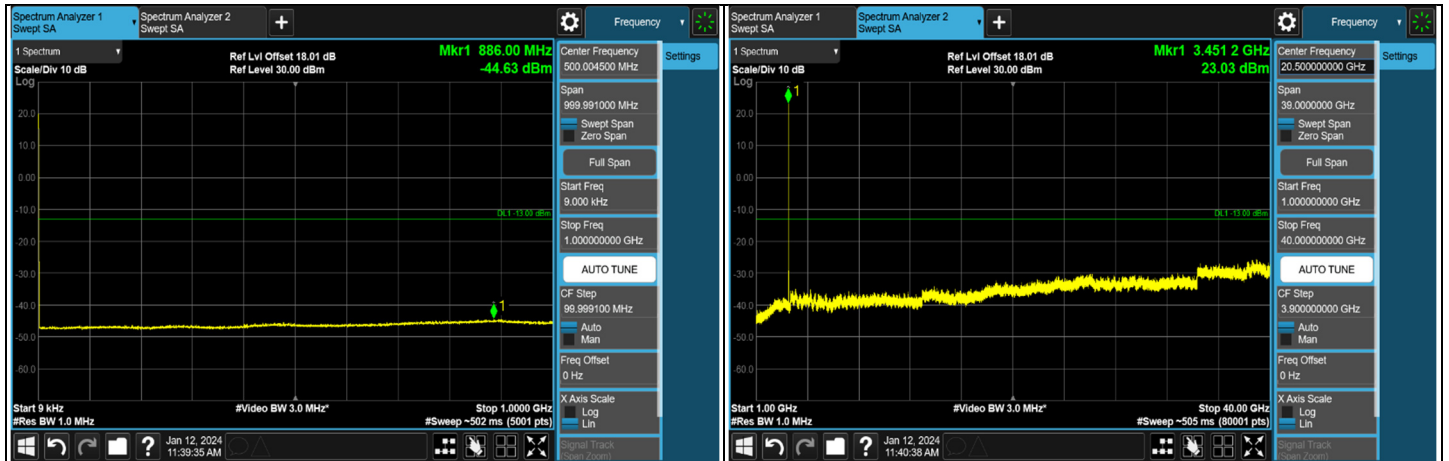
CH 630668 (3460.02 MHz)



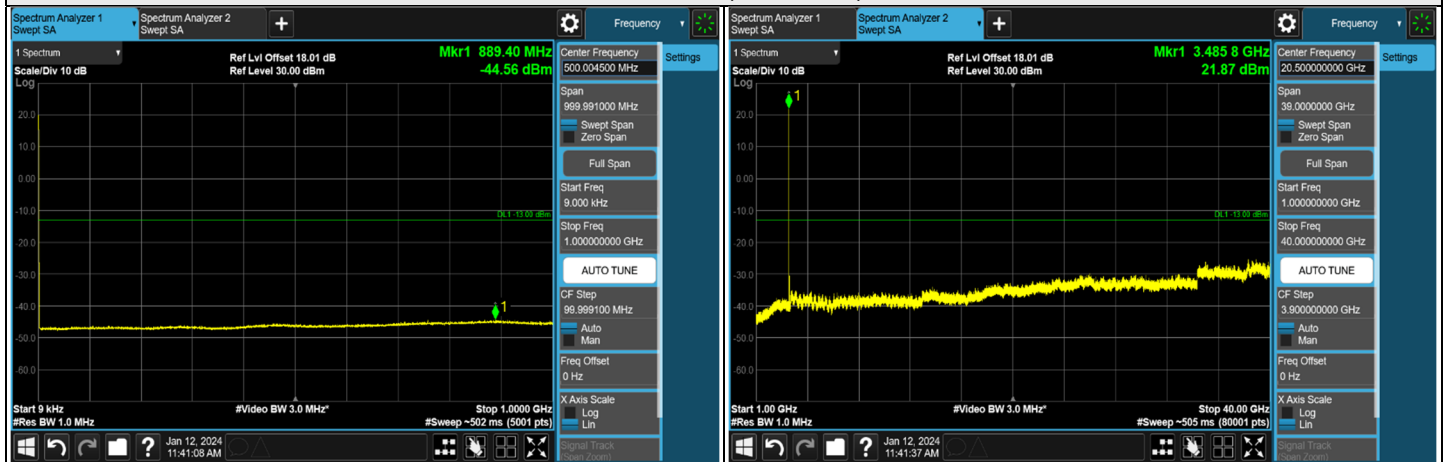
CH 636000 (3540 MHz)



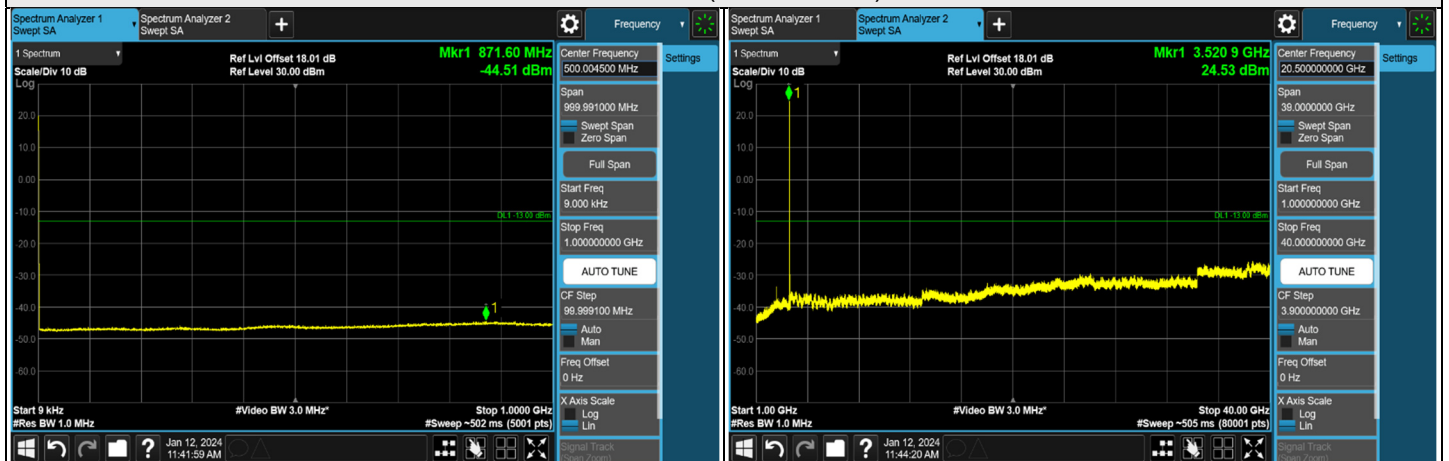
NR n78 SCS 30 kHz (3.45 GHz ~ 3.55 GHz) - MIMO Ant 7, Channel Bandwidth: 30 MHz



CH 631000 (3465 MHz)



CH 633334 (3500.01 MHz)



CH 635666 (3534.99 MHz)

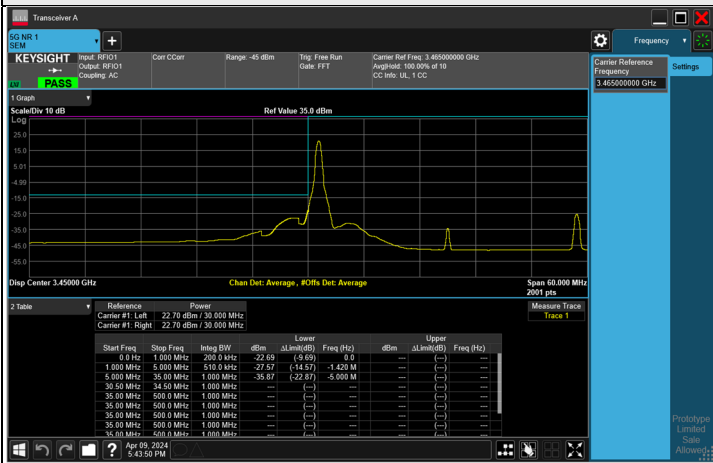
Note: The signal at 9 kHz is IF signal from spectrum analyzer.



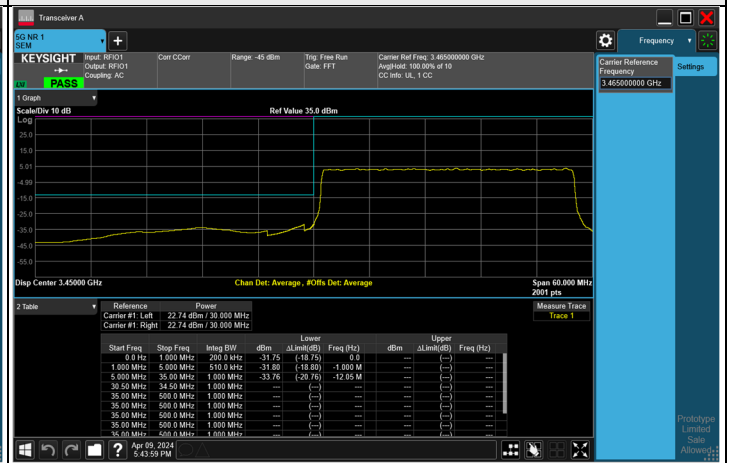
NR n78 SCS 30 kHz (3.45 GHz ~ 3.55 GHz) - MIMO Ant 7, Channel Bandwidth: 30 MHz

CH 631000 (3465 MHz)

1 RB

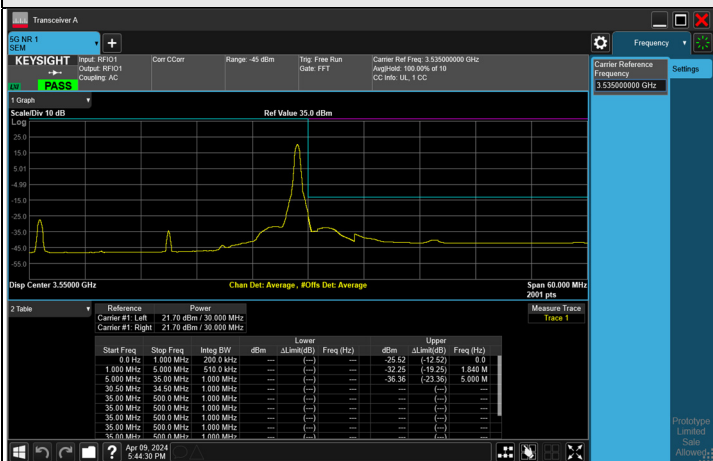


FULL RB



CH 635666 (3534.99 MHz)

1 RB



FULL RB

