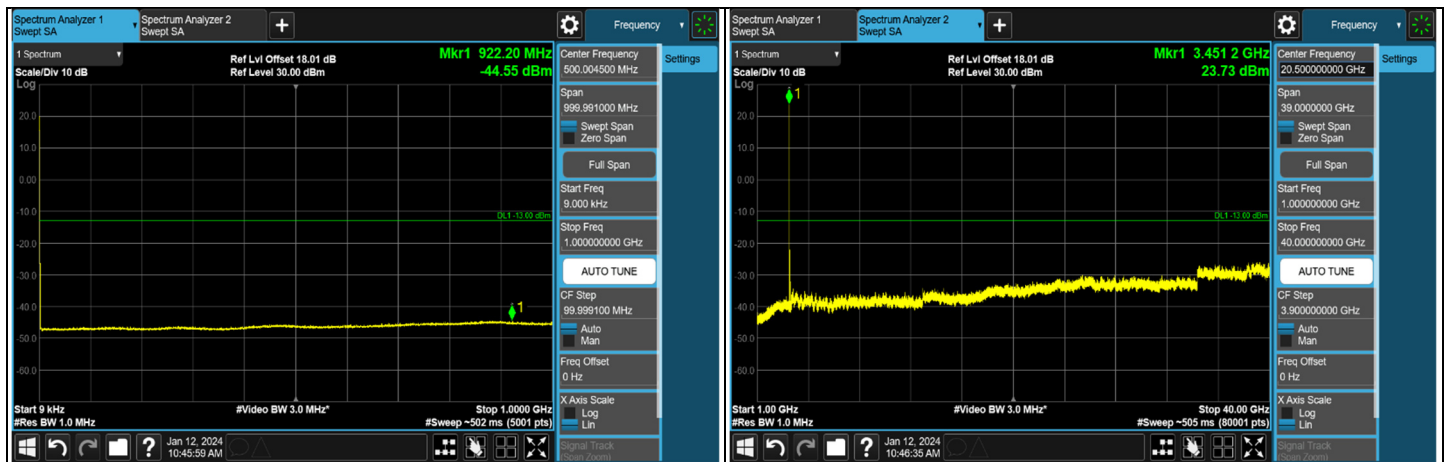
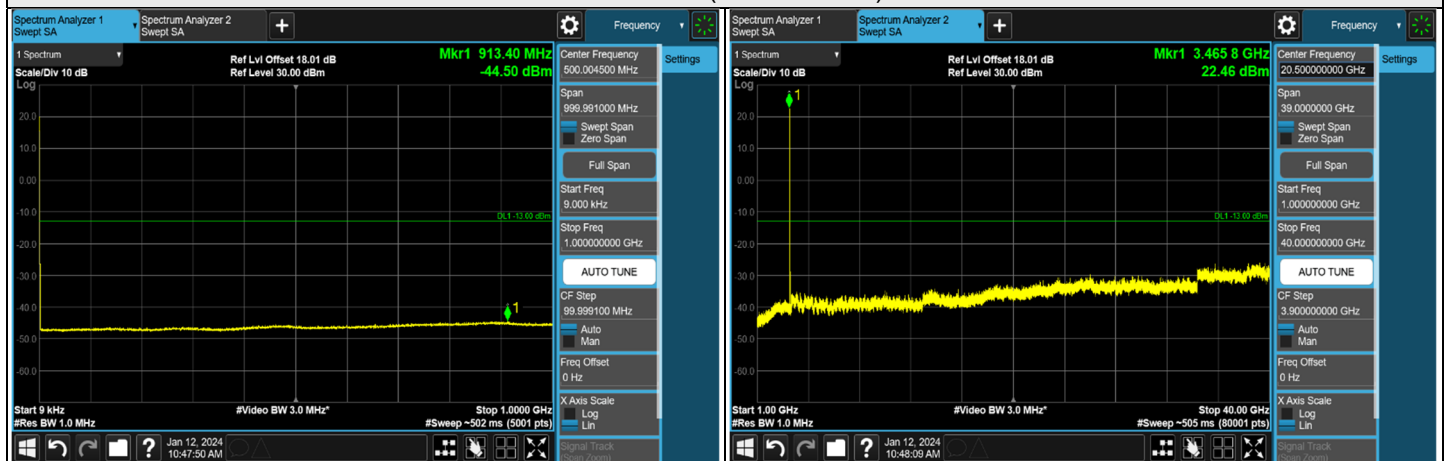




NR n78 SCS 30 kHz (3.45 GHz ~ 3.55 GHz) - MIMO Ant 5, Channel Bandwidth: 70 MHz



CH 623334 (3485.01 MHz)



CH 633334 (3500.01 MHz)



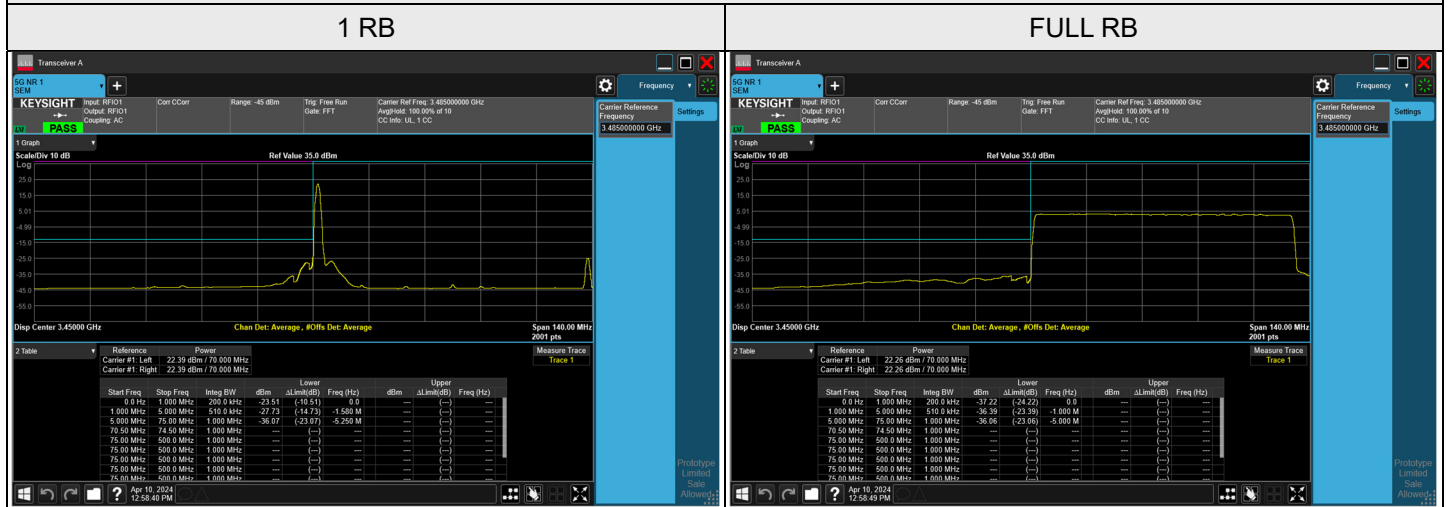
CH 634332 (3514.98 MHz)

Note: The signal at 9 kHz is IF signal from spectrum analyzer.

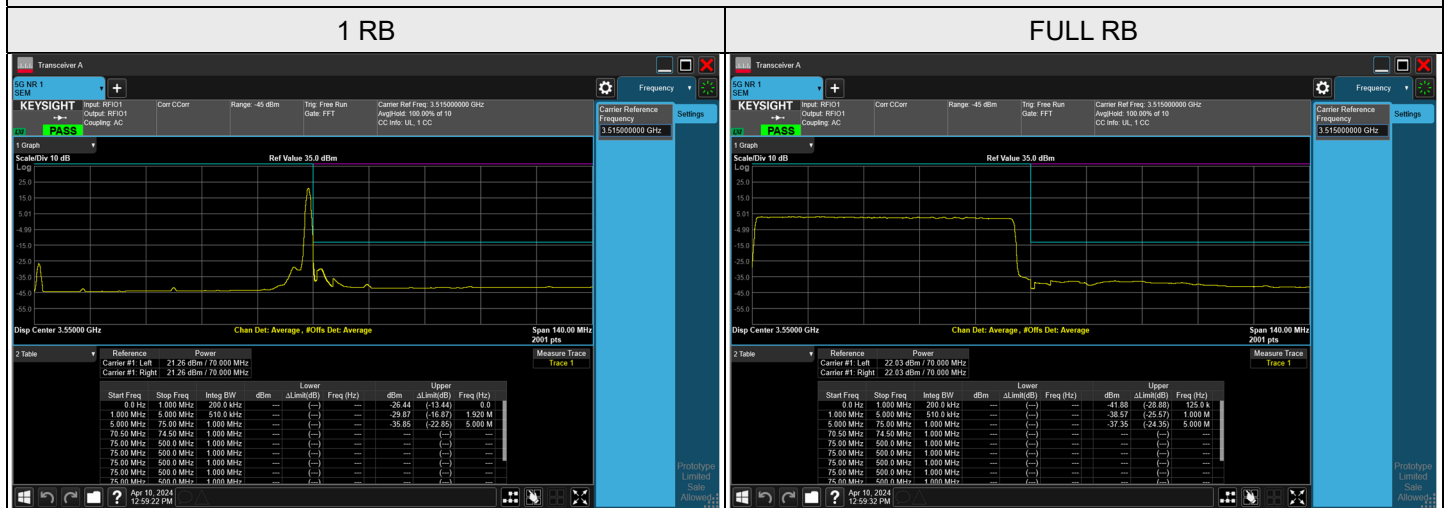


NR n78 SCS 30 kHz (3.45 GHz ~ 3.55 GHz) - MIMO Ant 5, Channel Bandwidth: 70 MHz

CH 632334 (3485.01 MHz)

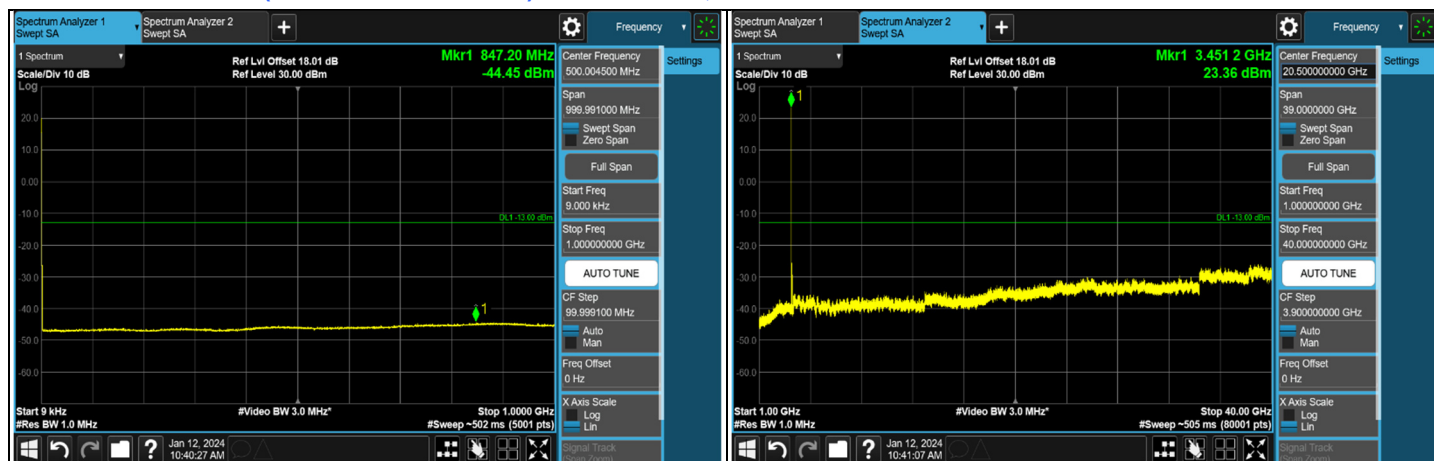


CH 634332 (3514.98 MHz)





NR n78 SCS 30 kHz (3.45 GHz ~ 3.55 GHz) - MIMO Ant 5, Channel Bandwidth: 80 MHz



CH 632668 (3490.02 MHz)



CH 633334 (3500.01 MHz)



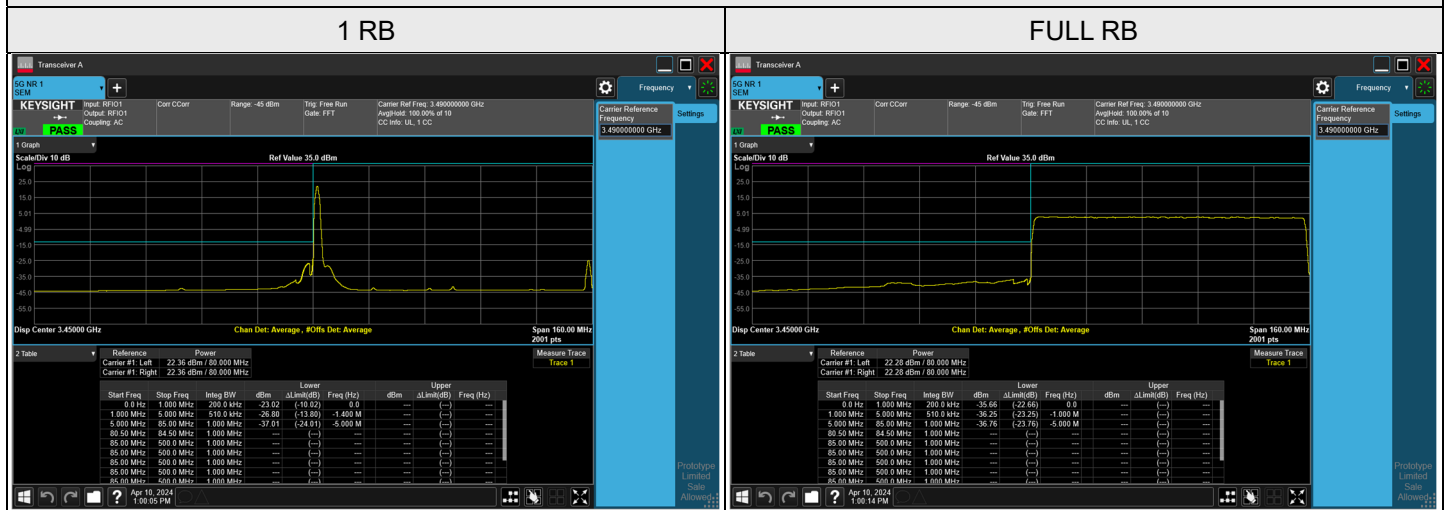
CH 634000 (3510 MHz)

Note: The signal at 9 kHz is IF signal from spectrum analyzer.

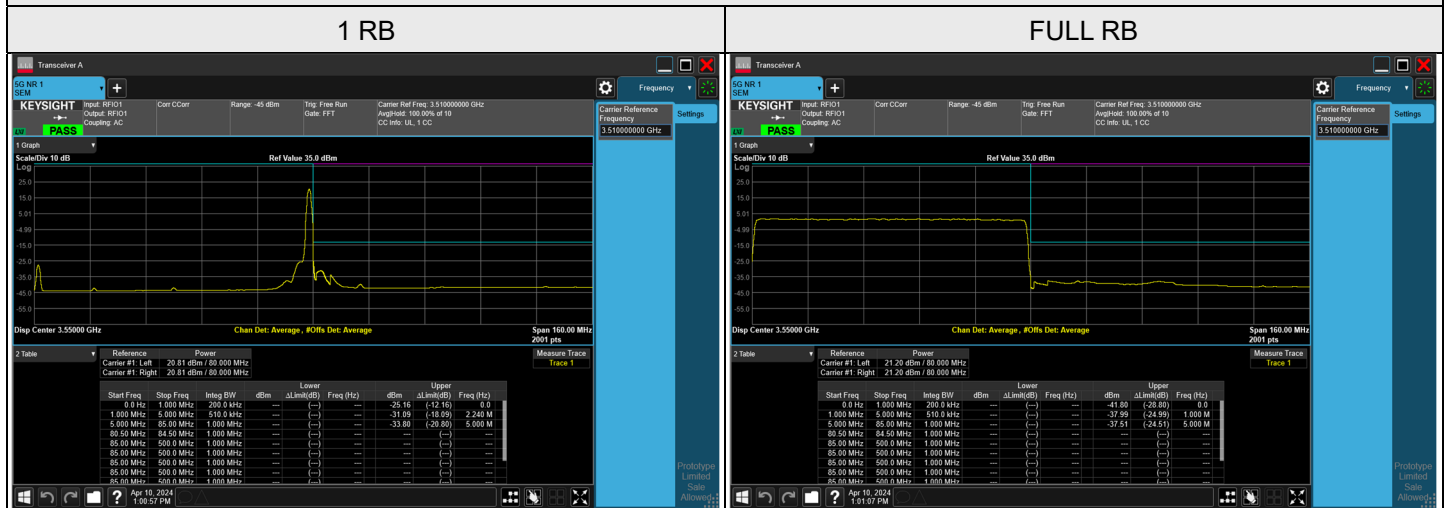


NR n78 SCS 30 kHz (3.45 GHz ~ 3.55 GHz) - MIMO Ant 5, Channel Bandwidth: 80 MHz

CH 632668 (3490.02 MHz)



CH 634000 (3510 MHz)





NR n78 SCS 30 kHz (3.45 GHz ~ 3.55 GHz) - MIMO Ant 5, Channel Bandwidth: 90 MHz



CH 633000 (3495 MHz)



CH 633334 (3500.01 MHz)



CH 633666 (3504.99 MHz)

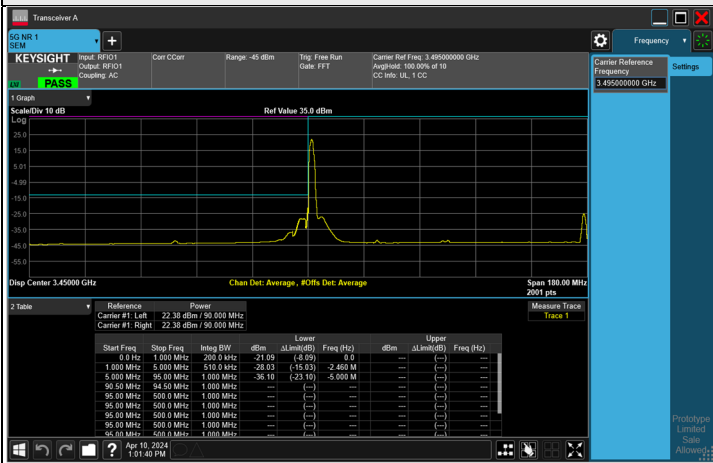
Note: The signal at 9 kHz is IF signal from spectrum analyzer.



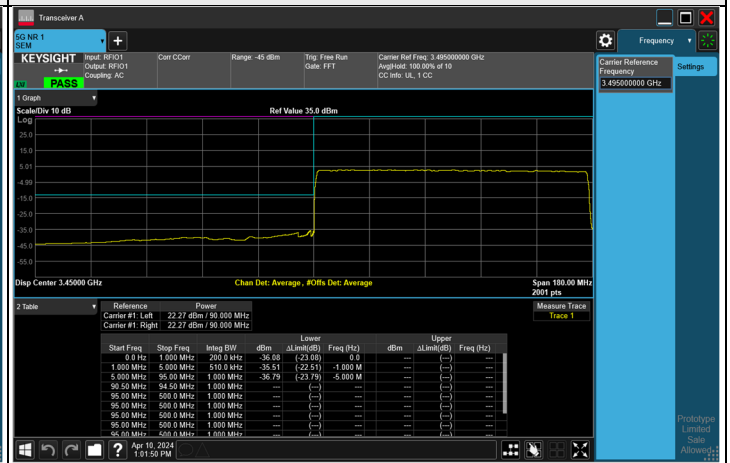
NR n78 SCS 30 kHz (3.45 GHz ~ 3.55 GHz) - MIMO Ant 5, Channel Bandwidth: 90 MHz

CH 633000 (3495 MHz)

1 RB

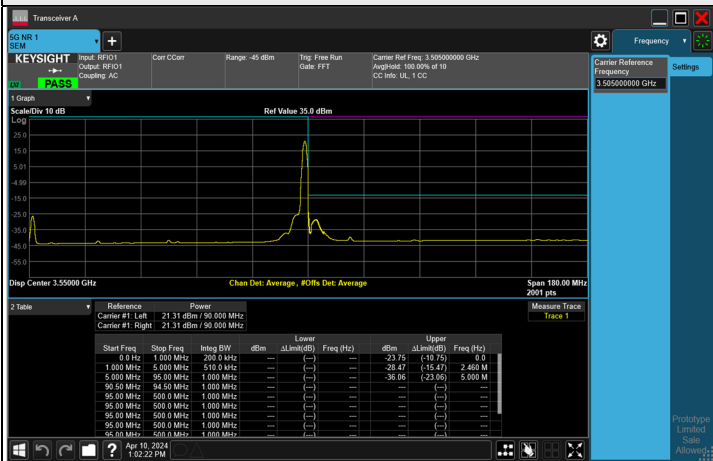


FULL RB



CH 633666 (3504.99 MHz)

1 RB



FULL RB

