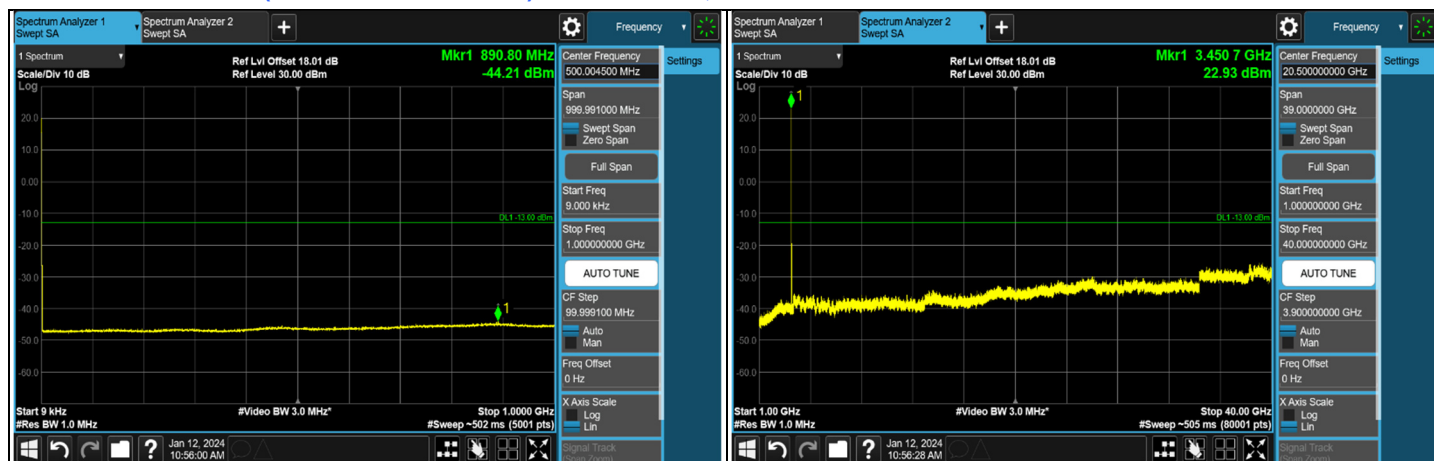




### NR n78 SCS 30 kHz (3.45 GHz ~ 3.55 GHz) - MIMO Ant 5, Channel Bandwidth: 40 MHz



#### CH 613334 (3470.01 MHz)



#### CH 633334 (3500.01 MHz)



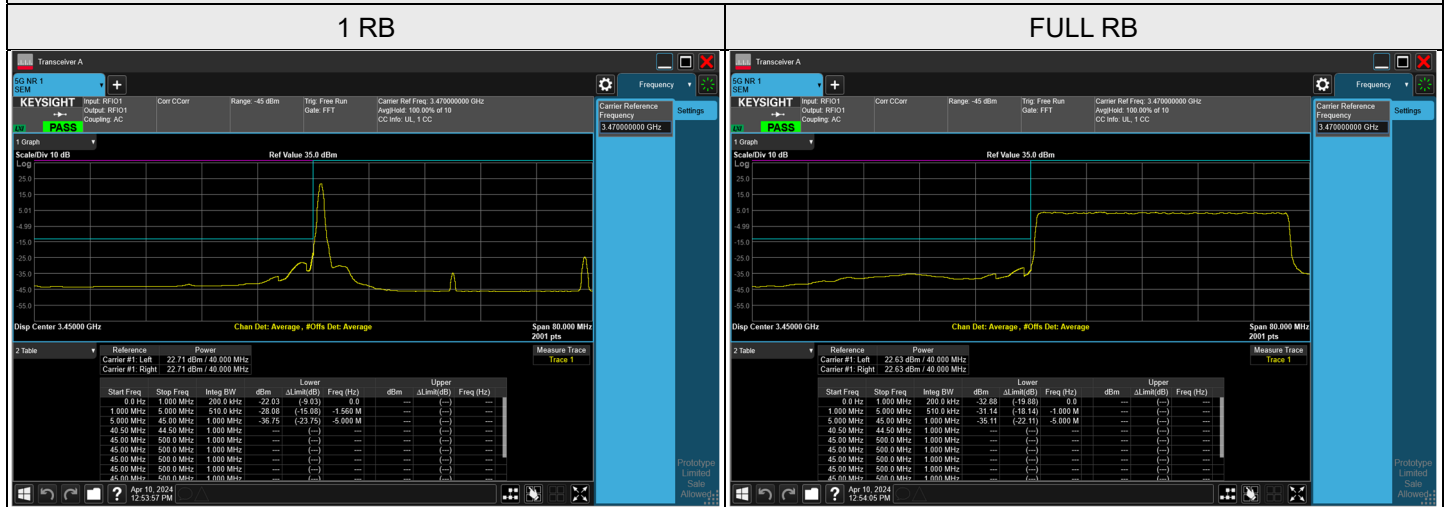
#### CH 635332 (3529.98 MHz)

Note: The signal at 9 kHz is IF signal from spectrum analyzer.

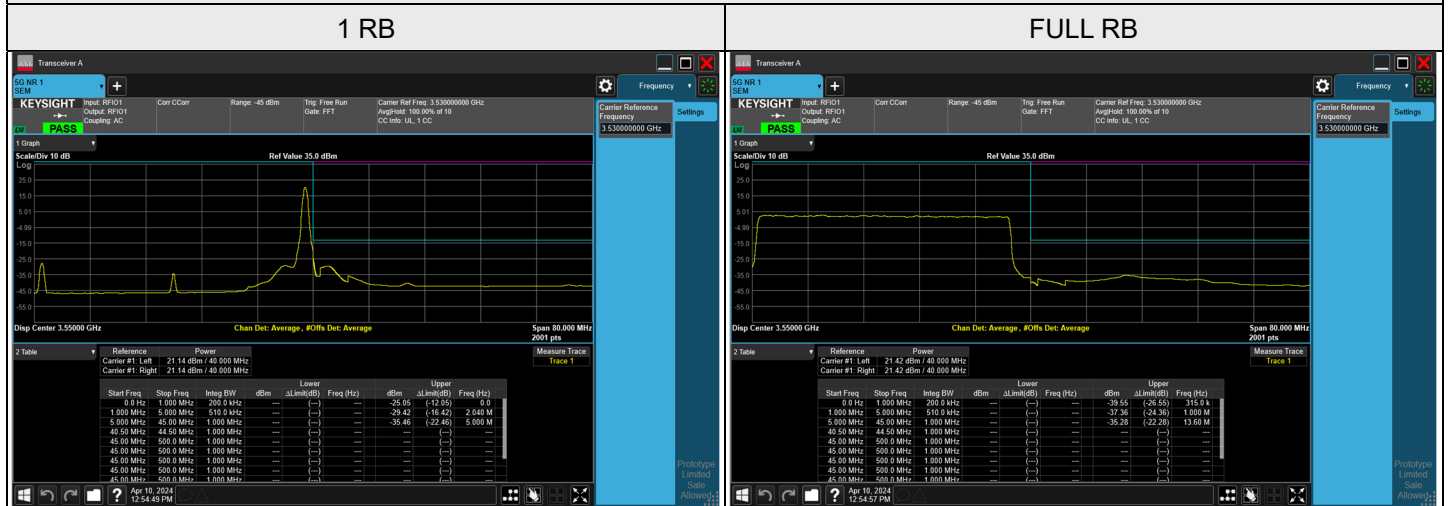


### NR n78 SCS 30 kHz (3.45 GHz ~ 3.55 GHz) - MIMO Ant 5, Channel Bandwidth: 40 MHz

#### CH 613334 (3470.01 MHz)



#### CH 635332 (3529.98 MHz)





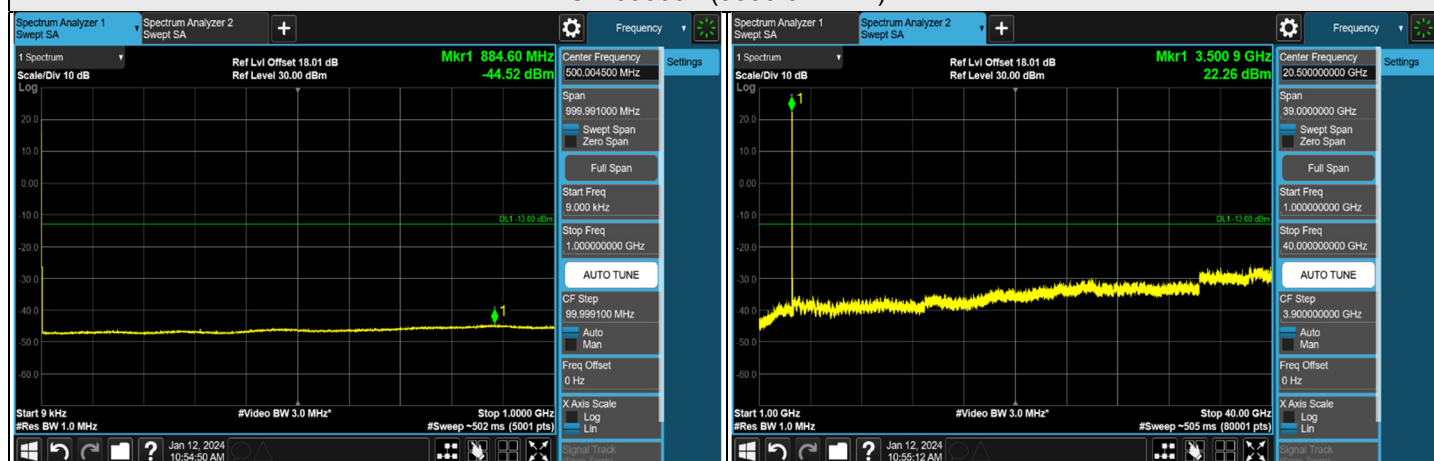
### NR n78 SCS 30 kHz (3.45 GHz ~ 3.55 GHz) - MIMO Ant 5, Channel Bandwidth: 50 MHz



#### CH 61668 (3475.02 MHz)



#### CH 633334 (3500.01 MHz)



#### CH 635000 (3525 MHz)

Note: The signal at 9 kHz is IF signal from spectrum analyzer.



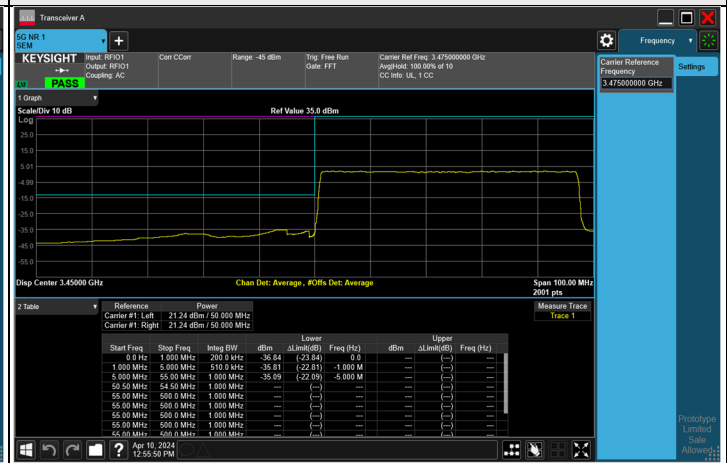
### NR n78 SCS 30 kHz (3.45 GHz ~ 3.55 GHz) - MIMO Ant 5, Channel Bandwidth: 50 MHz

#### CH 631668 (3475.02 MHz)

##### 1 RB

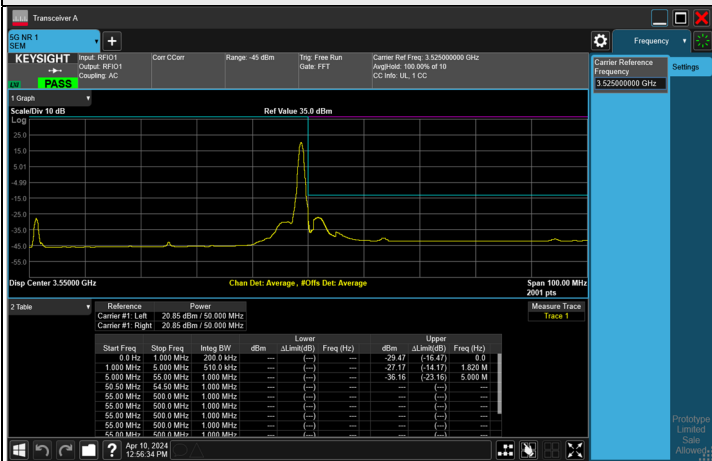


##### FULL RB

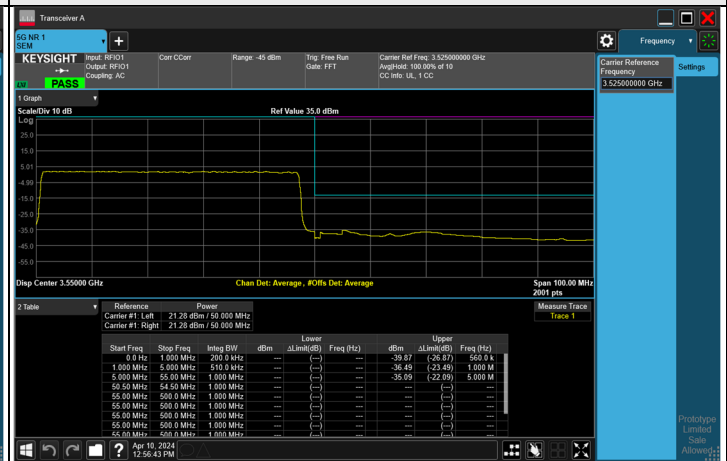


#### CH 635000 (3525 MHz)

##### 1 RB



##### FULL RB

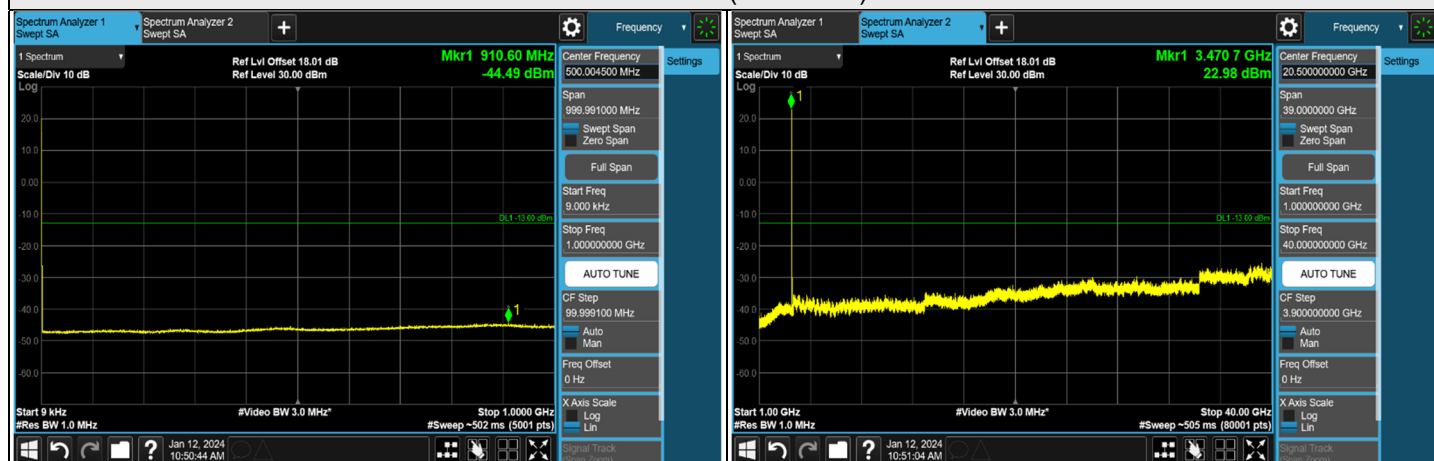




### NR n78 SCS 30 kHz (3.45 GHz ~ 3.55 GHz) - MIMO Ant 5, Channel Bandwidth: 60 MHz



### CH 632000 (3480 MHz)



### CH 633334 (3500.01 MHz)



### CH 634666 (3519.99 MHz)

Note: The signal at 9 kHz is IF signal from spectrum analyzer.



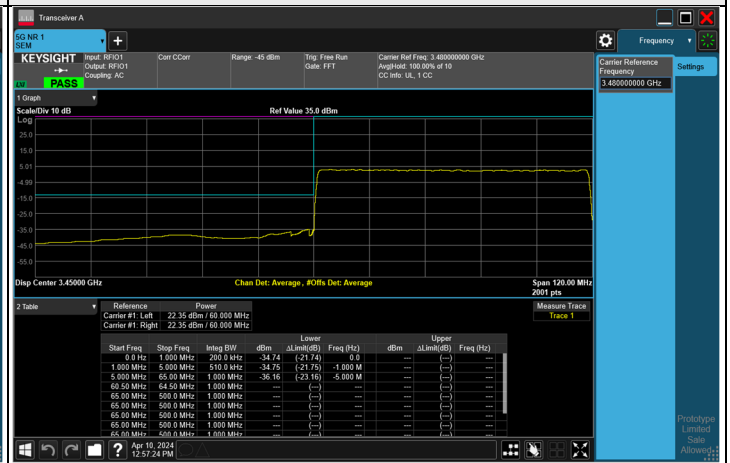
### NR n78 SCS 30 kHz (3.45 GHz ~ 3.55 GHz) - MIMO Ant 5, Channel Bandwidth: 60 MHz

#### CH 632000 (3480 MHz)

##### 1 RB

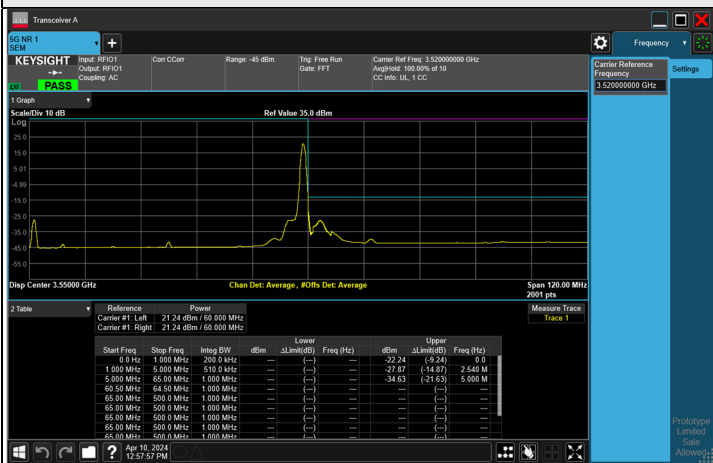


##### FULL RB



#### CH 634666 (3519.99 MHz)

##### 1 RB



##### FULL RB

