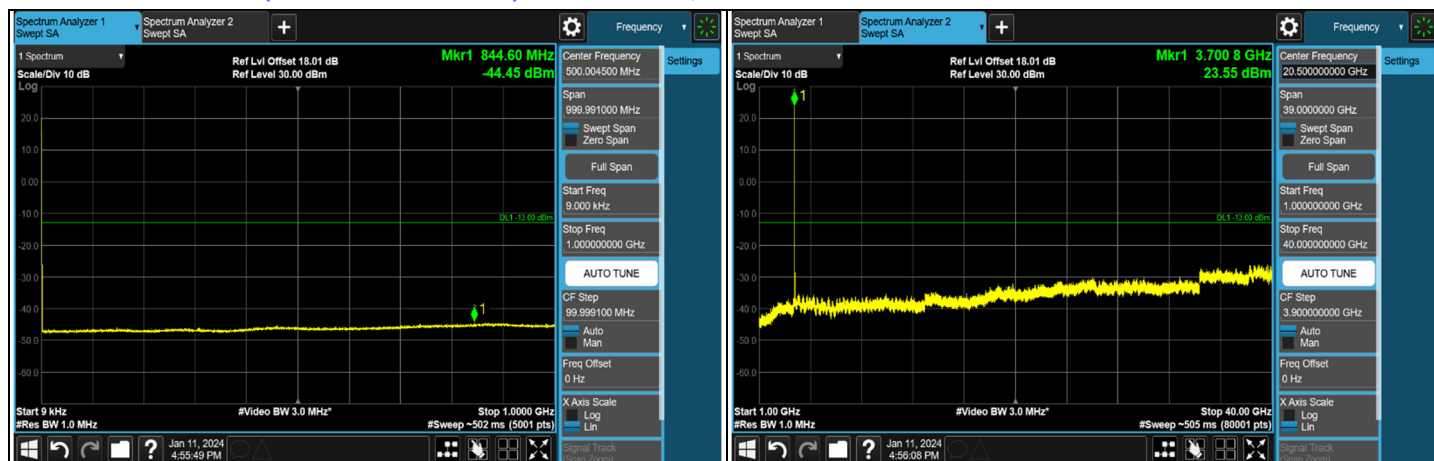
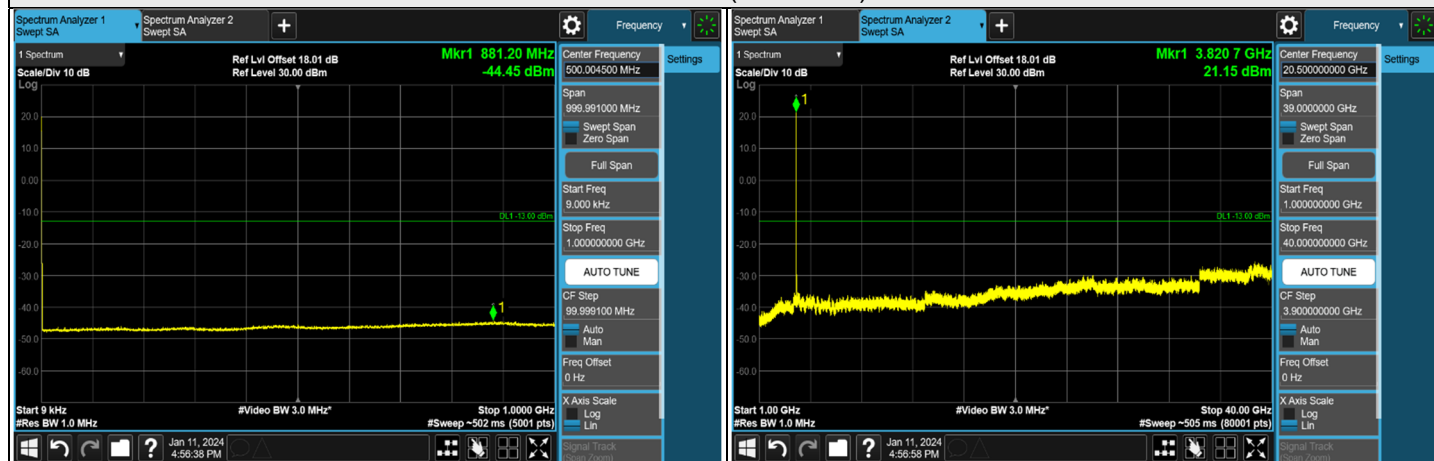




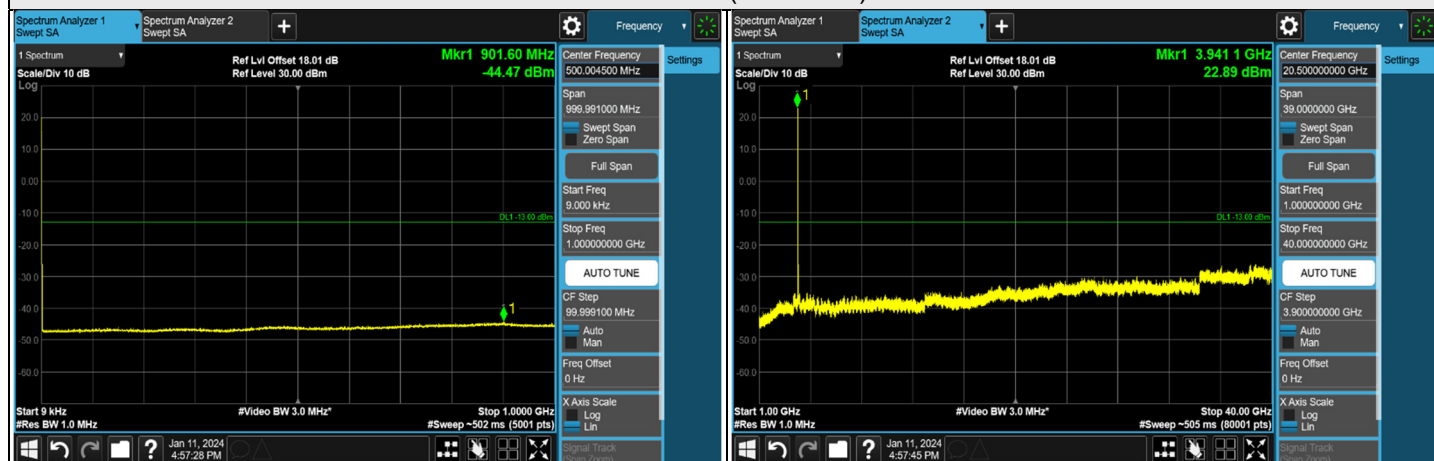
### NR n77 SCS 30 kHz (3.7 GHz ~ 3.98 GHz) - MIMO Ant 7, Channel Bandwidth: 40 MHz



### CH 648000 (3720 MHz)



### CH 656000 (3840 MHz)



### CH 664000 (3960 MHz)

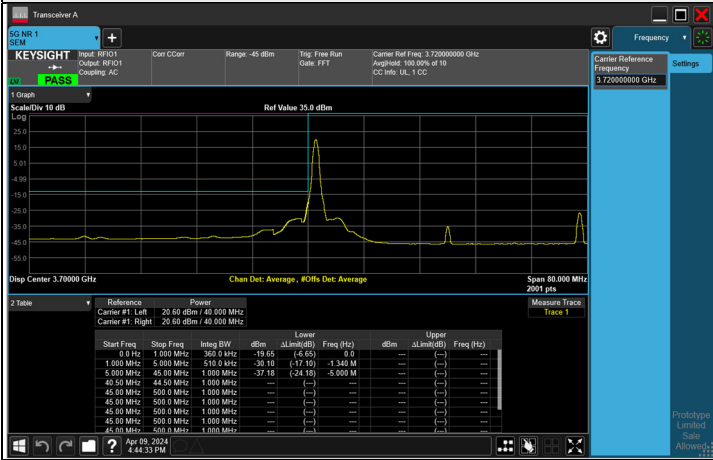
Note: The signal at 9 kHz is IF signal from spectrum analyzer.



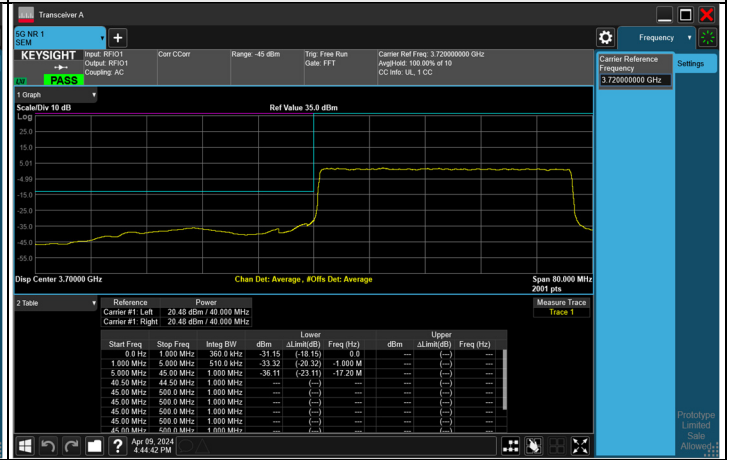
### NR n77 SCS 30 kHz (3.7 GHz ~ 3.98 GHz) - MIMO Ant 7, Channel Bandwidth: 40 MHz

#### CH 648000 (3720 MHz)

##### 1 RB

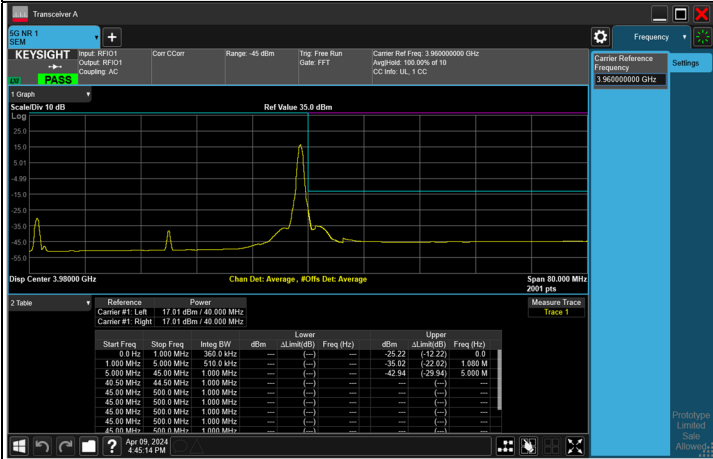


##### FULL RB

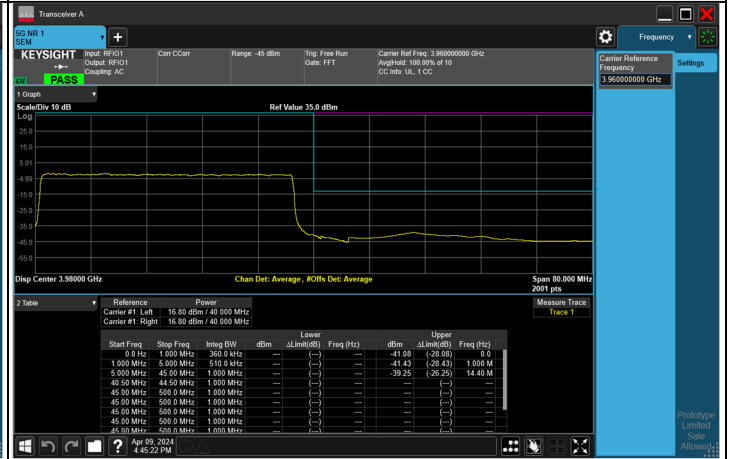


#### CH 664000 (3960 MHz)

##### 1 RB



##### FULL RB

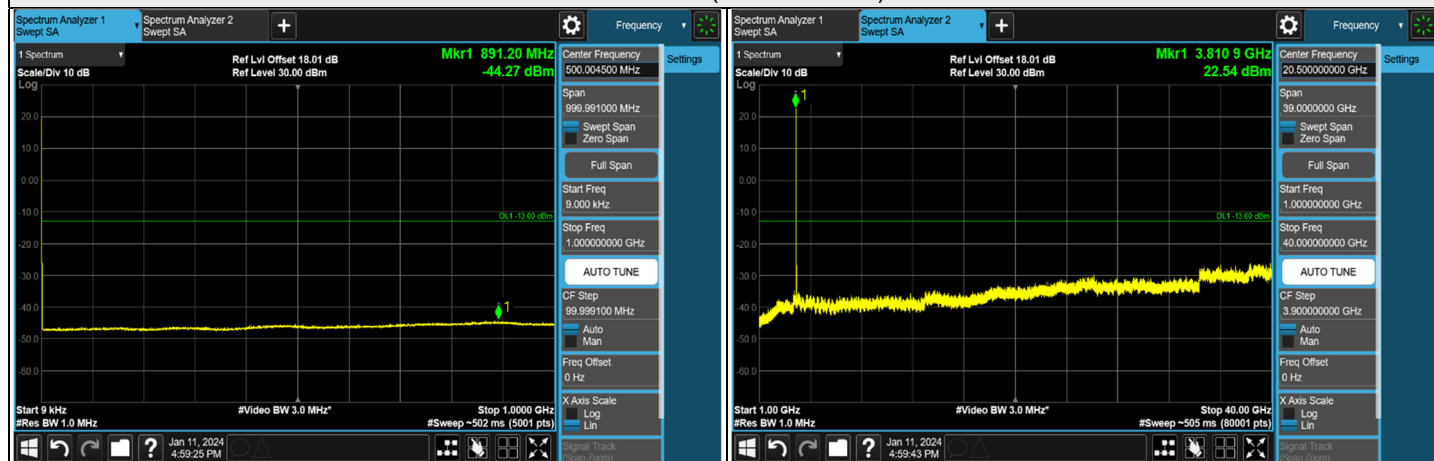




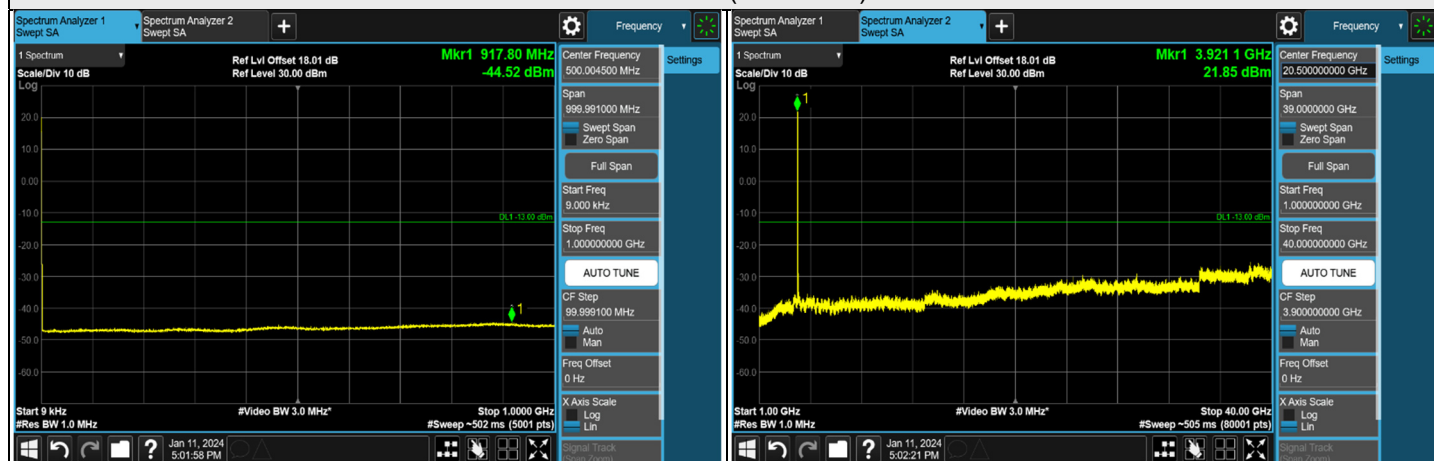
### NR n77 SCS 30 kHz (3.7 GHz ~ 3.98 GHz) - MIMO Ant 7, Channel Bandwidth: 60 MHz



#### CH 648668 (3730.02 MHz)



#### CH 656000 (3840 MHz)



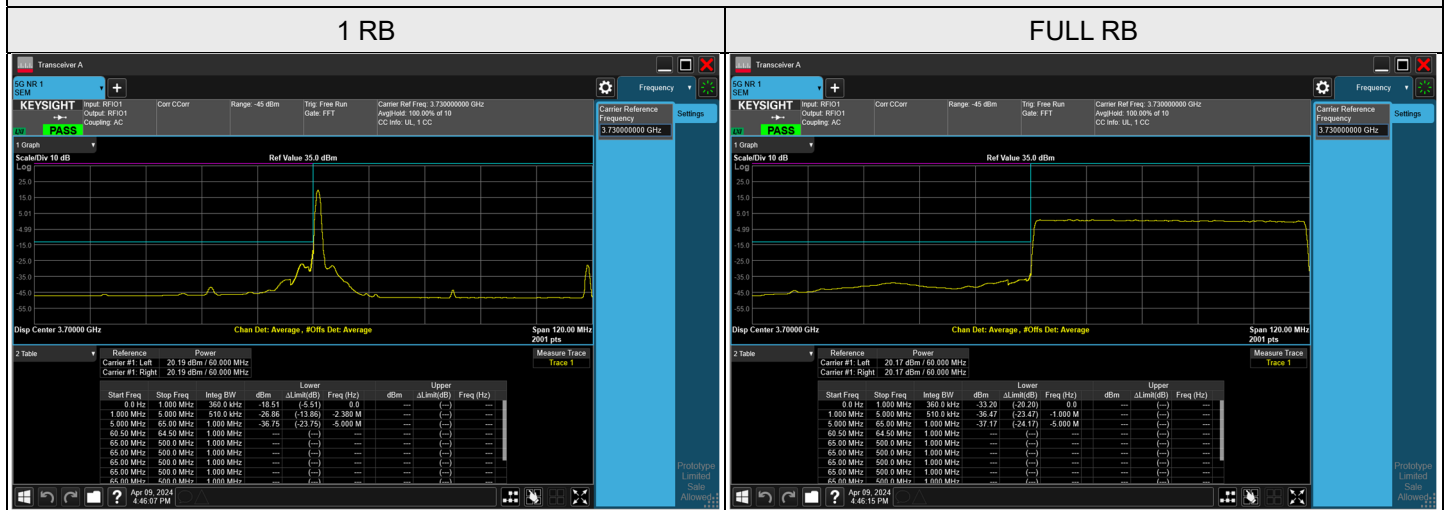
#### CH 663332 (3949.98 MHz)

Note: The signal at 9 kHz is IF signal from spectrum analyzer.

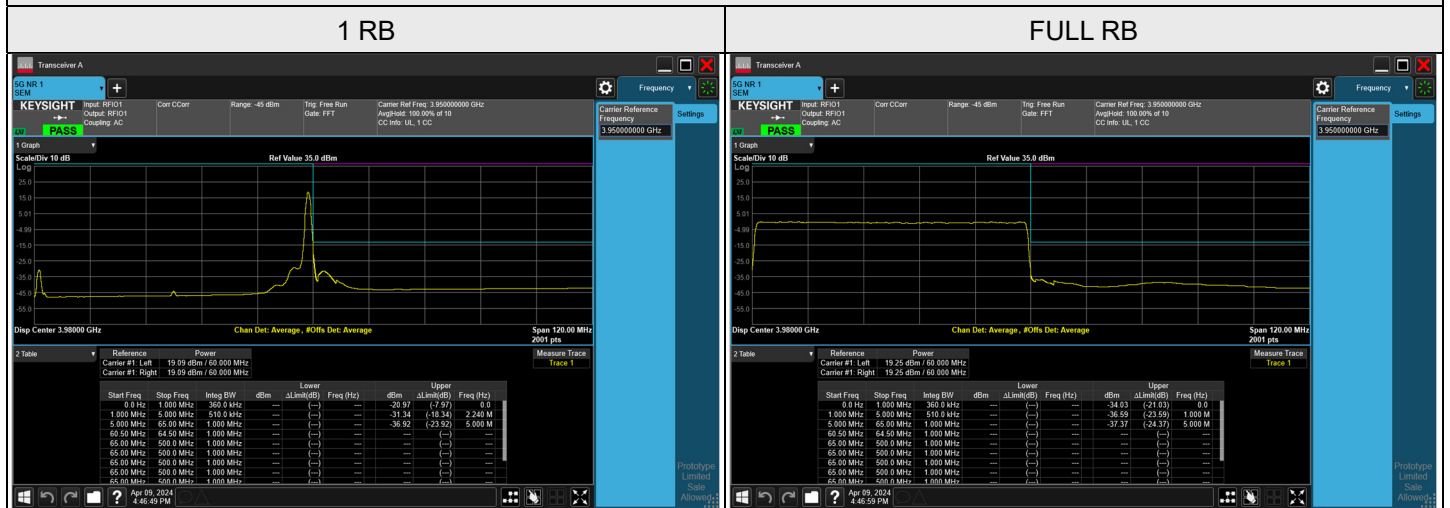


### NR n77 SCS 30 kHz (3.7 GHz ~ 3.98 GHz) - MIMO Ant 7, Channel Bandwidth: 60 MHz

#### CH 648668 (3730.02 MHz)

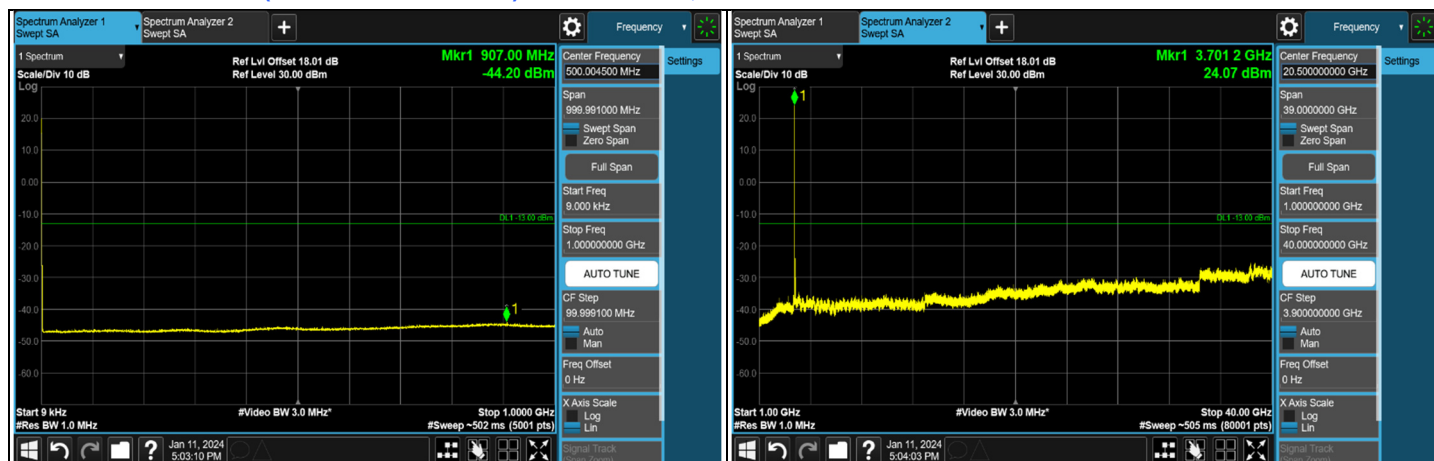


#### CH 663332 (3949.98 MHz)

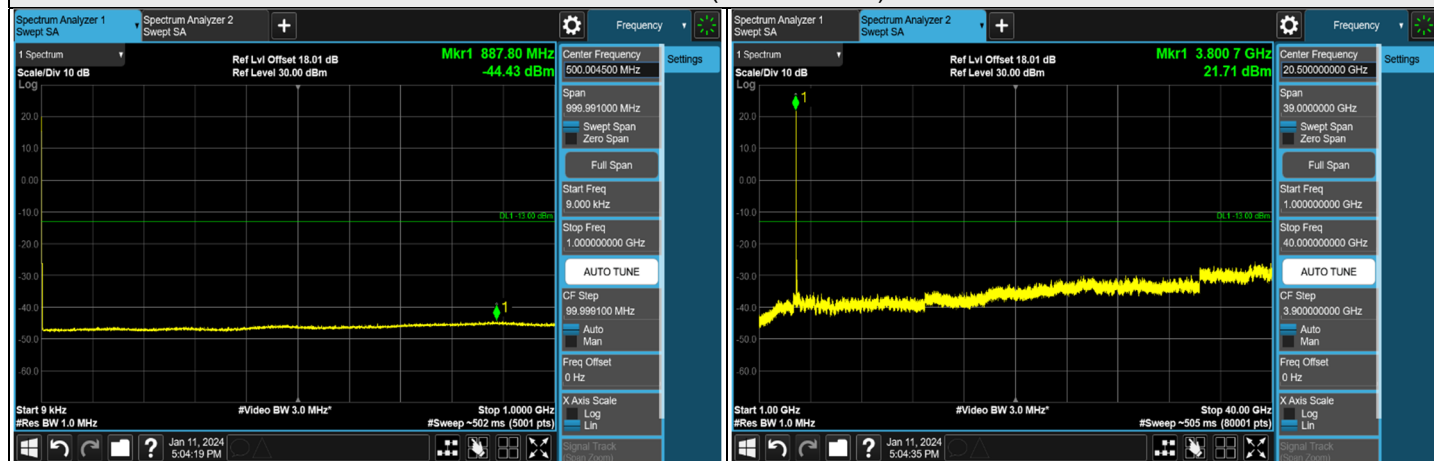




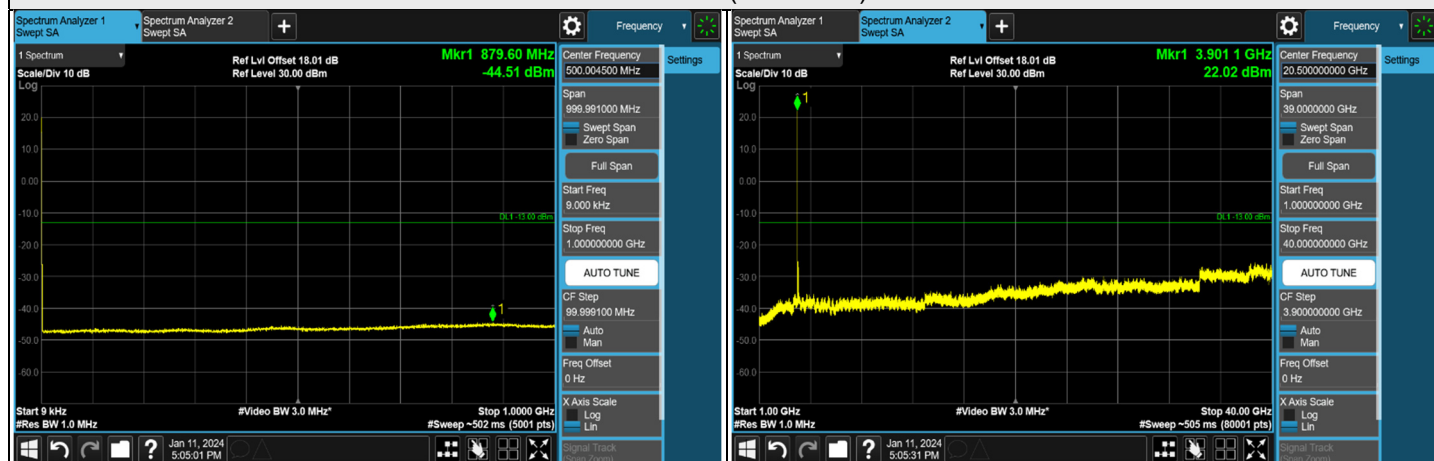
### NR n77 SCS 30 kHz (3.7 GHz ~ 3.98 GHz) - MIMO Ant 7, Channel Bandwidth: 80 MHz



CH 649334 (3740.01 MHz)



CH 656000 (3840 MHz)



CH 662666 (3939.99 MHz)

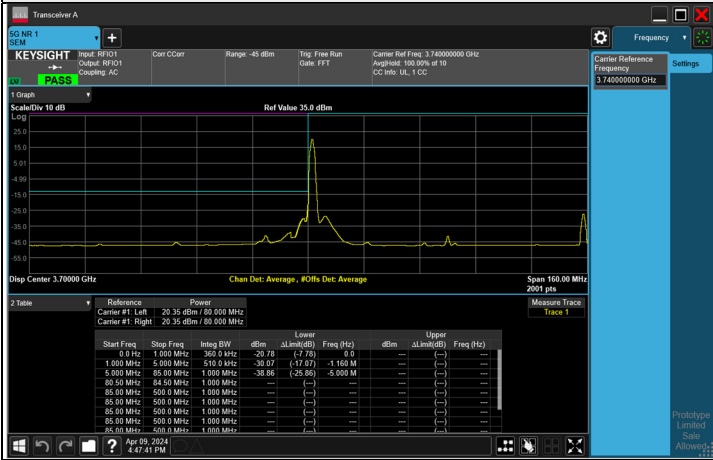
Note: The signal at 9 kHz is IF signal from spectrum analyzer.



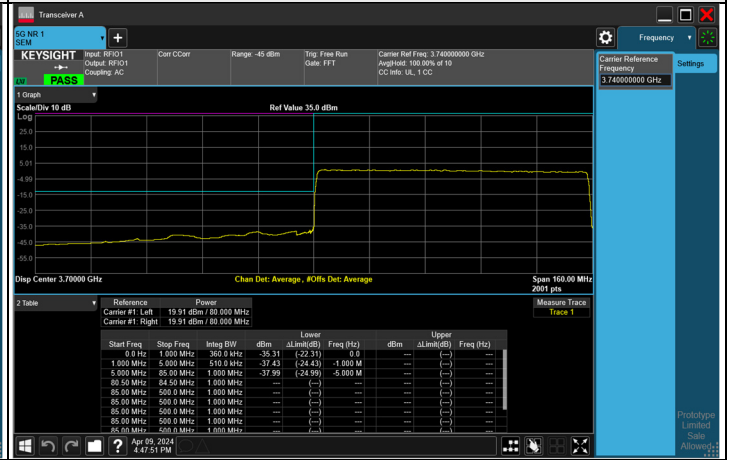
### NR n77 SCS 30 kHz (3.7 GHz ~ 3.98 GHz) - MIMO Ant 7, Channel Bandwidth: 80 MHz

#### CH 649334 (3740.01 MHz)

##### 1 RB

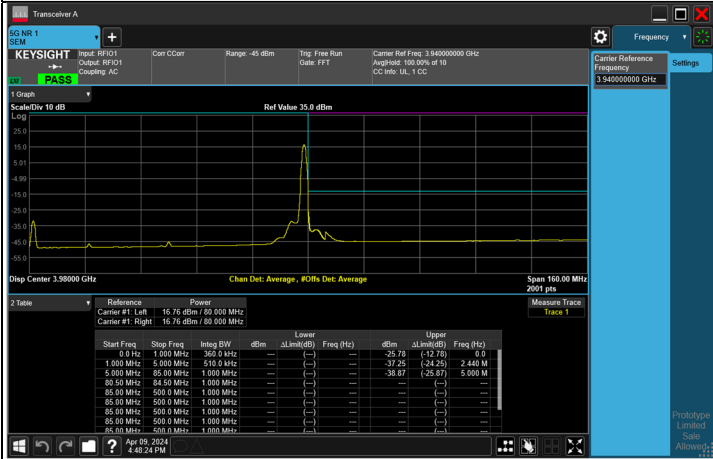


##### FULL RB



#### CH 662666 (3939.99 MHz)

##### 1 RB



##### FULL RB

