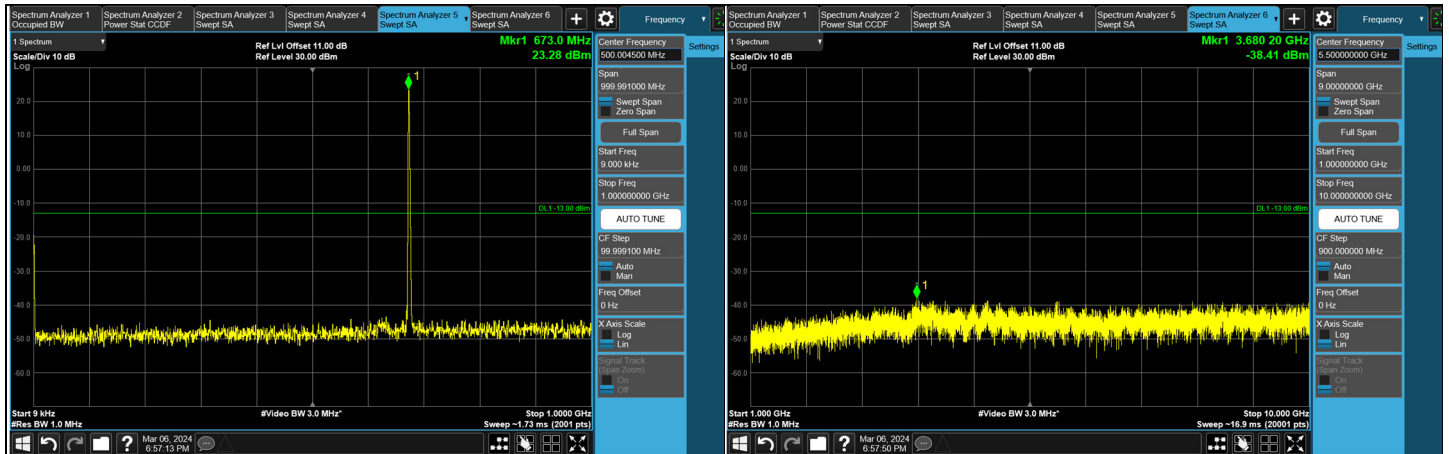
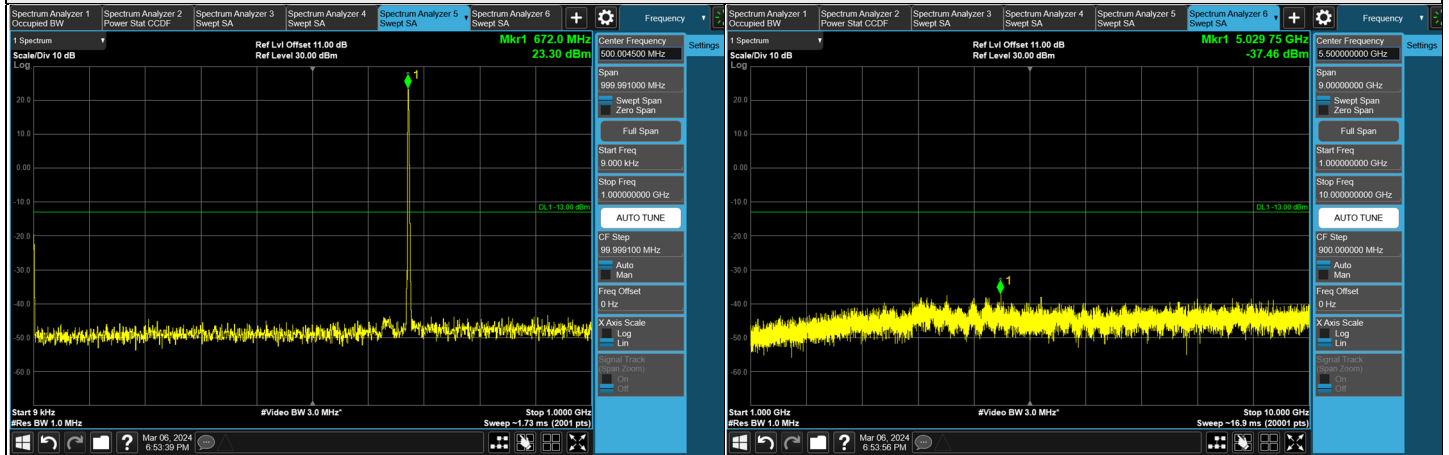




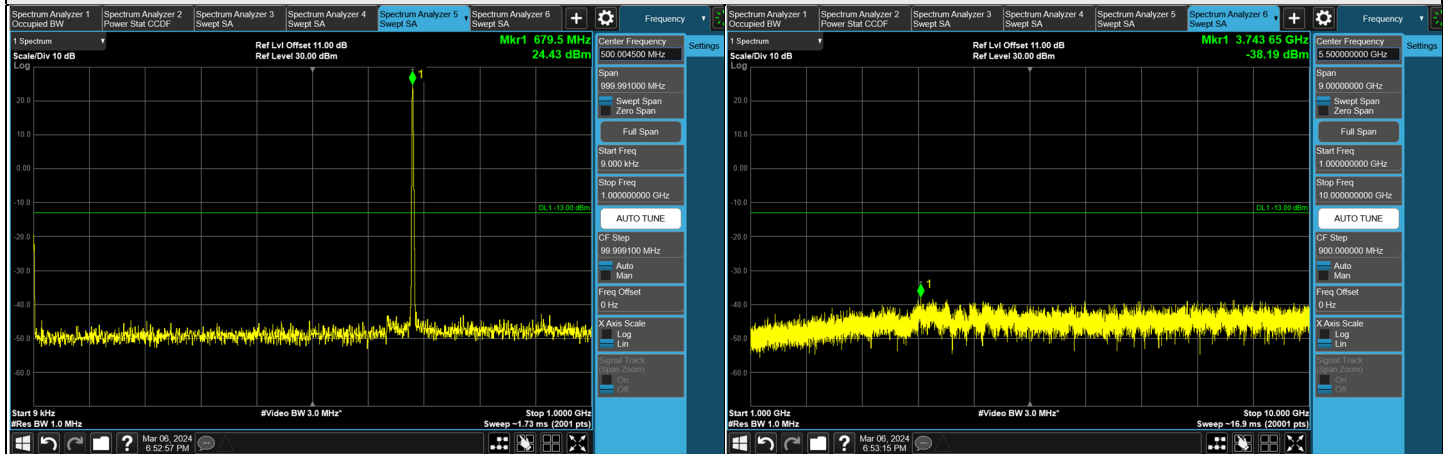
NR n71 SCS 15 kHz - Ant 0, Channel Bandwidth: 20 MHz



Channel 134600 (673 MHz)



Channel 136100 (680.5 MHz)

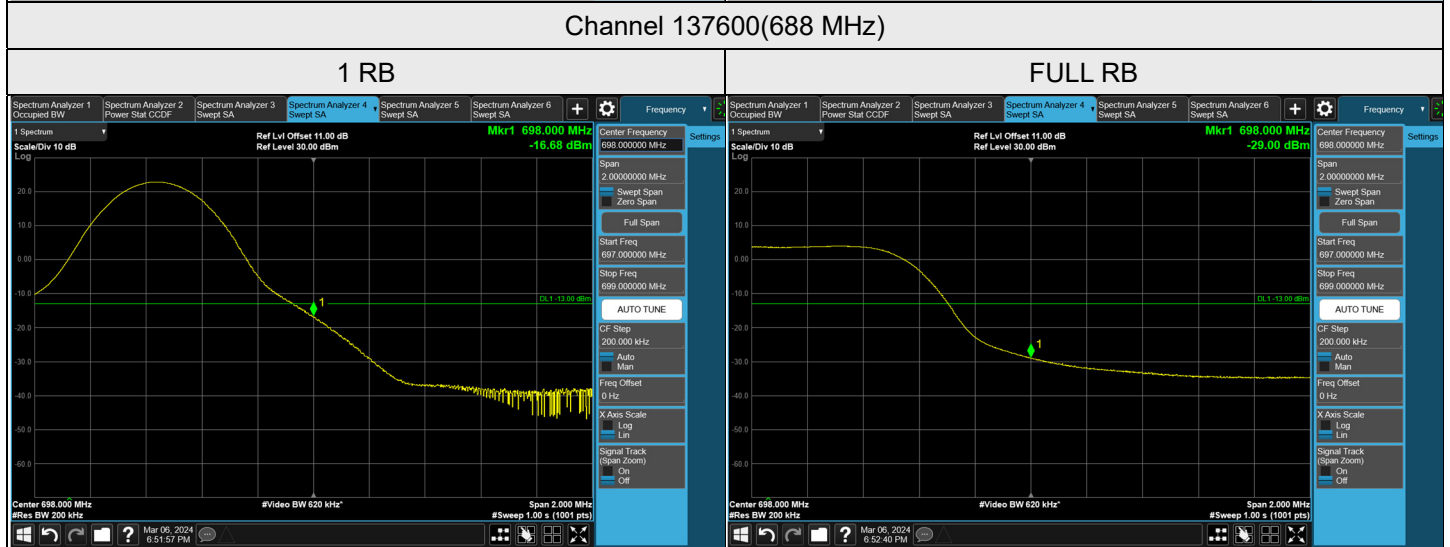
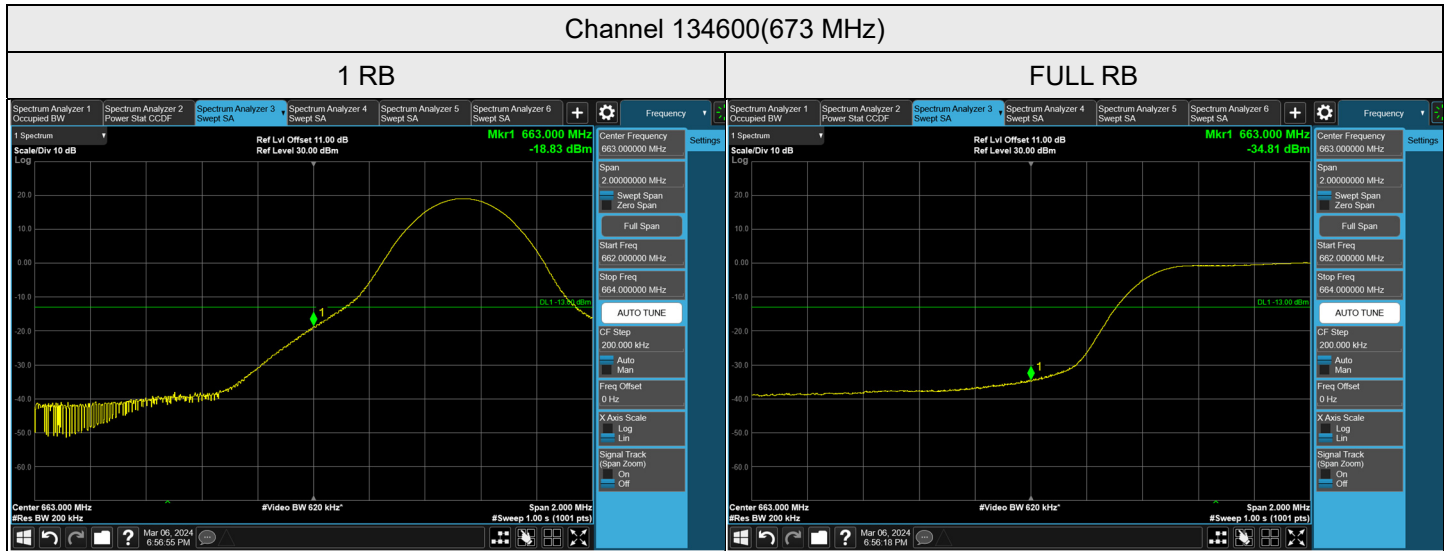


Channel 137600 (688 MHz)

Note: The signal at 9 kHz is IF signal from spectrum analyzer.



NR n71 SCS 15 kHz - Ant 0, Channel Bandwidth: 20 MHz

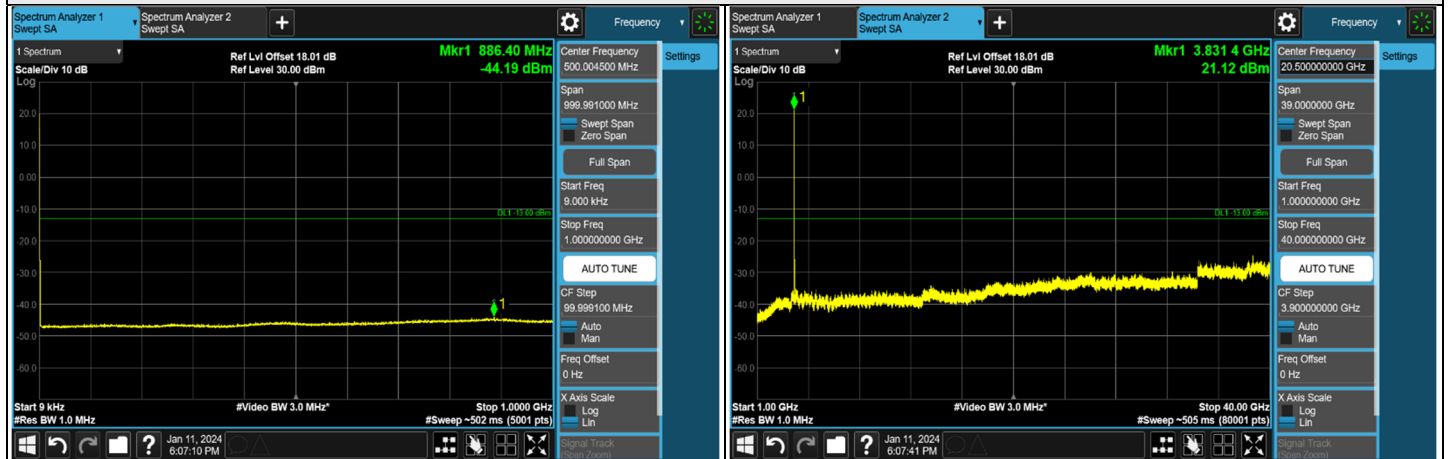


7.5.13 NR n77 SCS 30 kHz (3.7 GHz ~ 3.98 GHz)

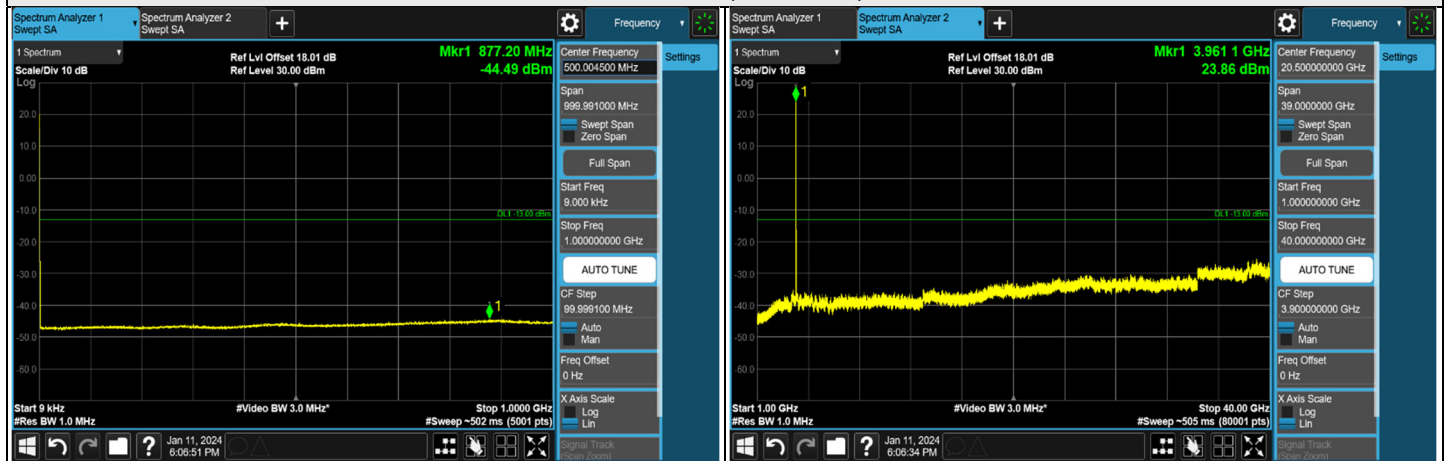
NR n77 SCS 30 kHz (3.7 GHz ~ 3.98 GHz) - MIMO Ant 5, Channel Bandwidth: 20 MHz



CH 647334 (3710.01 MHz)



CH 656000 (3840 MHz)



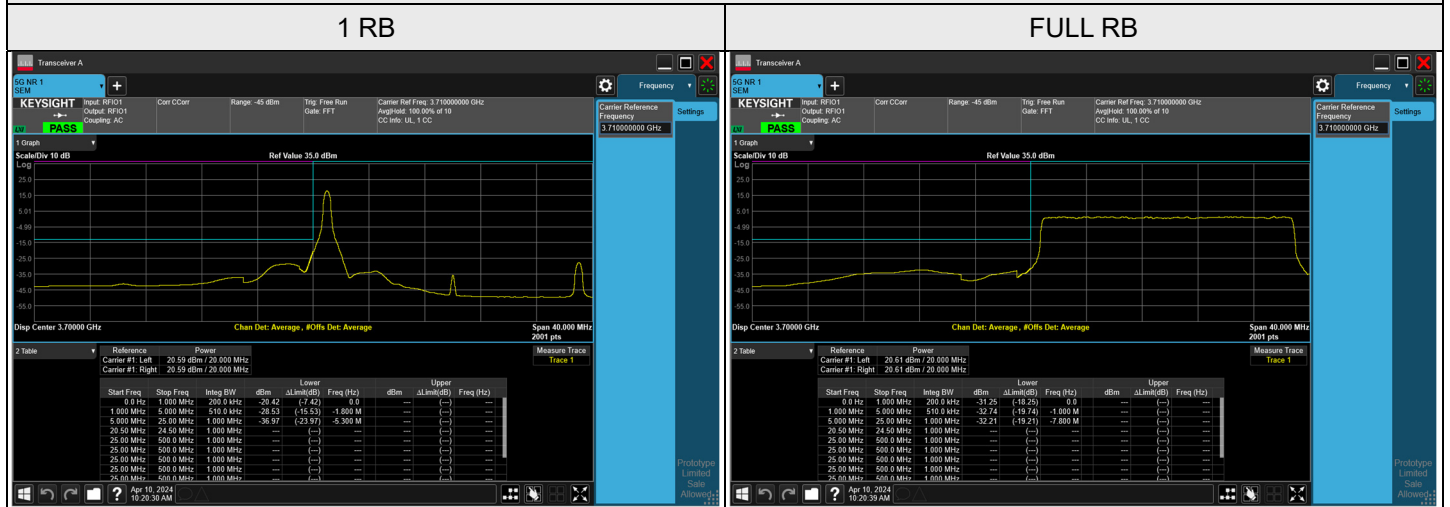
CH 664666 (3969.99 MHz)

Note: The signal at 9 kHz is IF signal from spectrum analyzer.

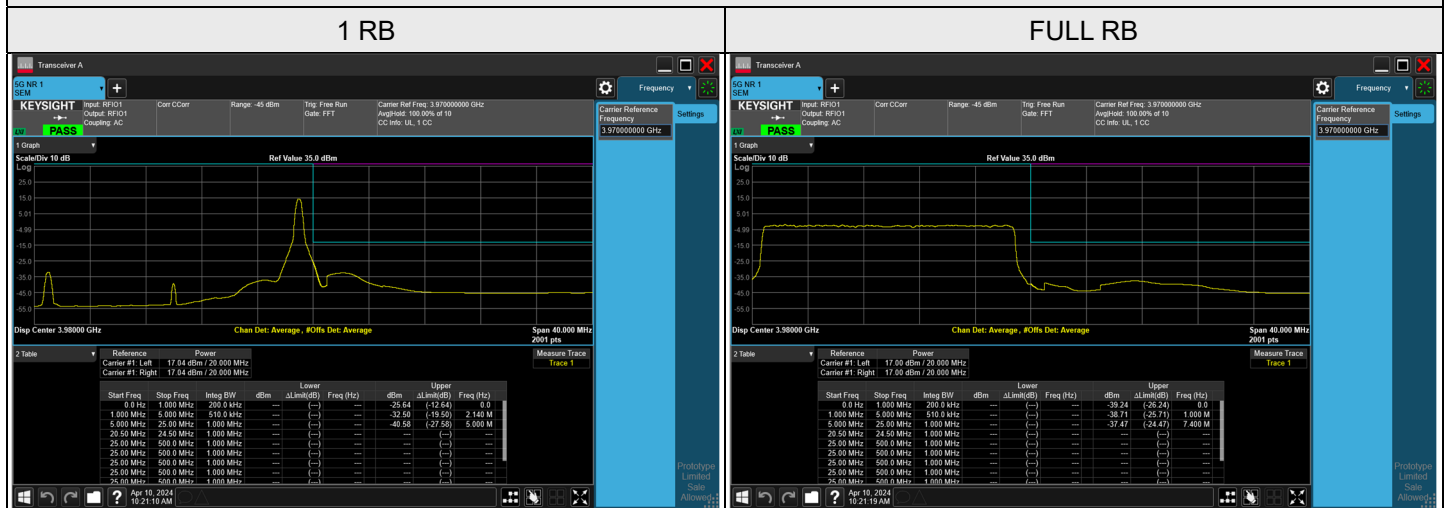


NR n77 SCS 30 kHz (3.7 GHz ~ 3.98 GHz) - MIMO Ant 5, Channel Bandwidth: 20 MHz

CH 647334 (3710.01 MHz)

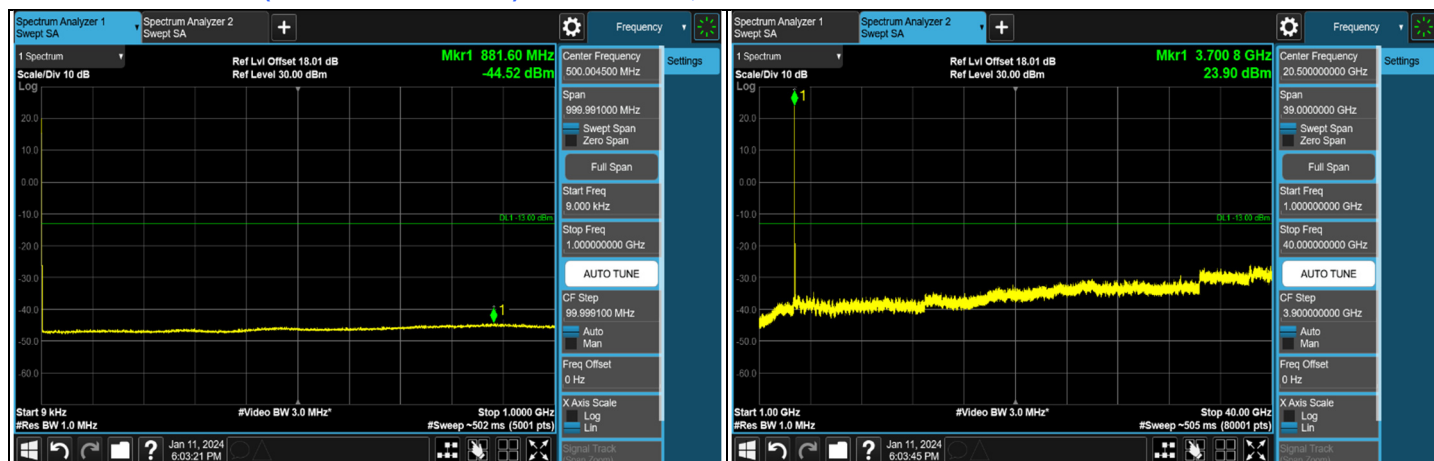


CH 664666 (3969.99 MHz)

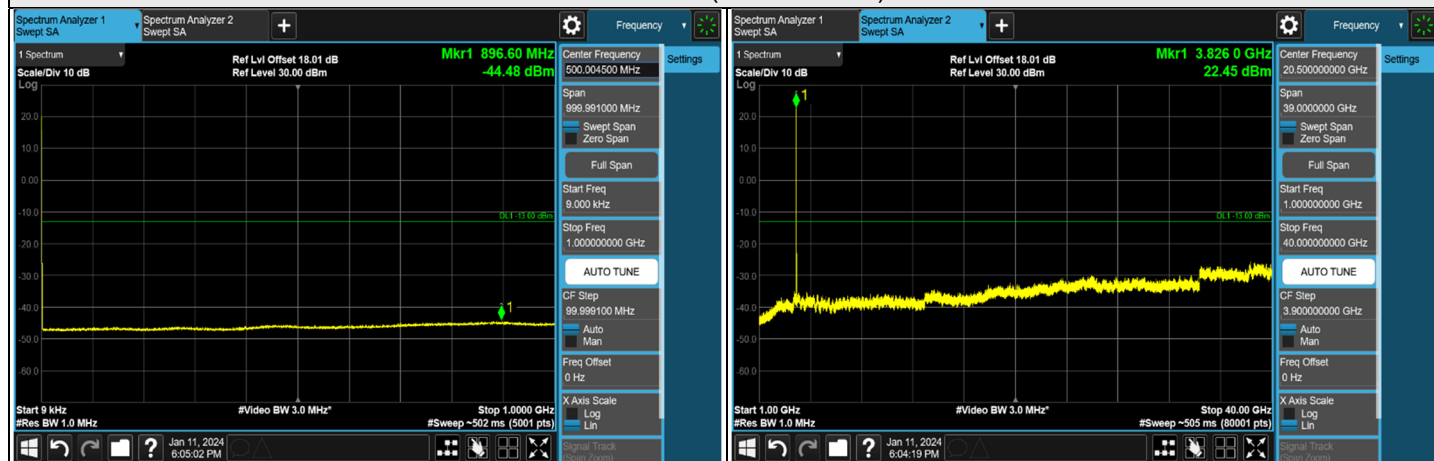




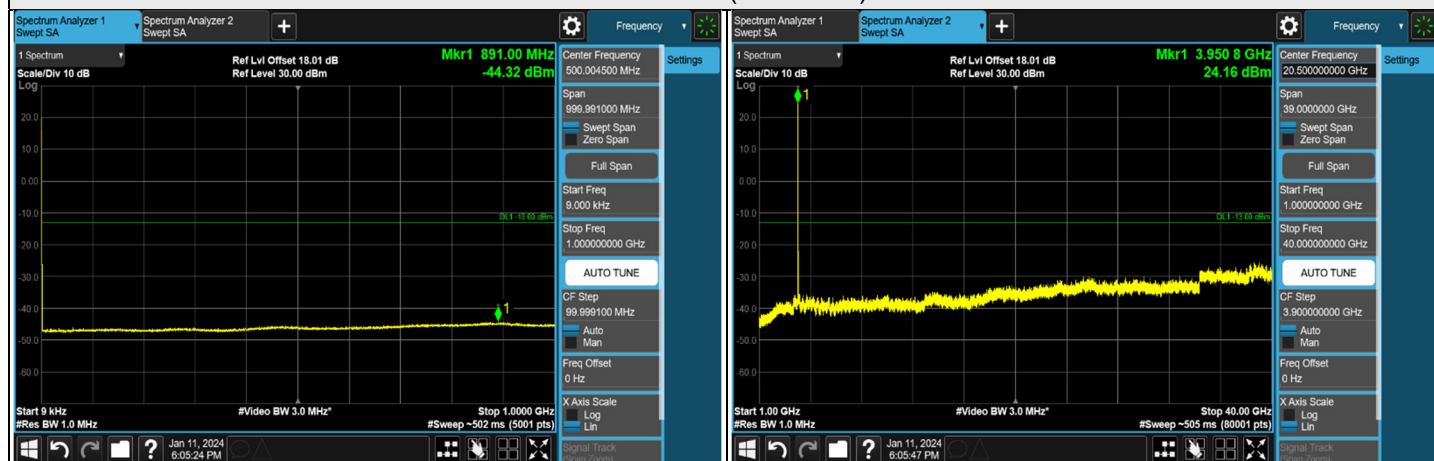
NR n77 SCS 30 kHz (3.7 GHz ~ 3.98 GHz) - MIMO Ant 5, Channel Bandwidth: 30 MHz



CH 647668 (3715.02 MHz)



CH 656000 (3840 MHz)



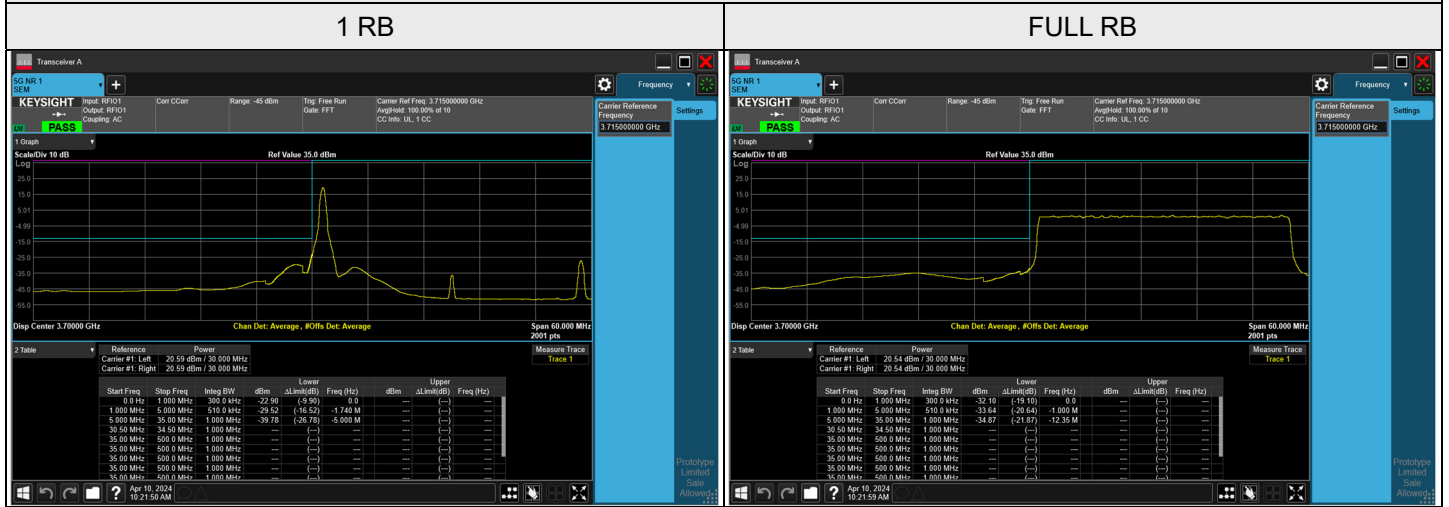
CH 664332 (3964.98 MHz)

Note: The signal at 9 kHz is IF signal from spectrum analyzer.



NR n77 SCS 30 kHz (3.7 GHz ~ 3.98 GHz) - MIMO Ant 5, Channel Bandwidth: 30 MHz

CH 647668 (3715.02 MHz)



CH 664332 (3964.98 MHz)

