

WCDMA Band IV

Frequency: 1712.4 MHz; Duty Cycle: 1:1; Room Ambient Temperature: 24.0°C; Liquid Temperature: 23.5°C

Medium parameters used: $f = 1713.1$ MHz; $\sigma = 1.46$ S/m; $\epsilon_r = 53.145$; $\rho = 1000$ kg/m³

DASY5 Configuration:

- Area Scan Setting - Find Secondary Maximum Within: 2.0 dB and with a peak SAR value greater than 0.0012W/kg
- Electronics: DAE3 Sn360; Calibrated: 2013/01/30
- Probe: EX3DV4 - SN3665; ConvF(7.89, 7.89, 7.89); Calibrated: 2012/04/27;
- Sensor-Surface: 1.4mm (Mechanical Surface Detection)
- Phantom: SAM 34; Type: SAM V4.0; Serial: TP-1150

Front Side/WCDMA BandIV/CH1312/Area Scan (8x9x1): Measurement grid: dx=15mm, dy=15mm

Maximum value of SAR (measured) = 0.195 W/kg

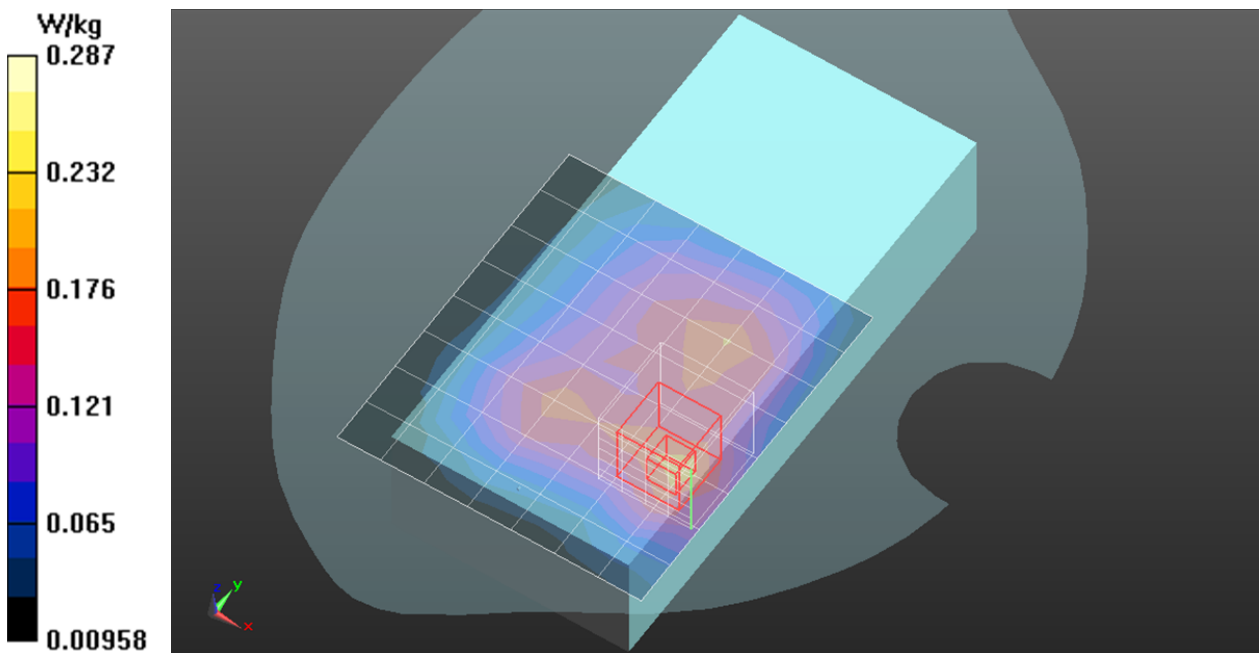
Front Side/WCDMA BandIV/CH1312/Zoom Scan (5x5x7)/Cube 0: Measurement grid: dx=8mm, dy=8mm, dz=5mm

Reference Value = 9.525 V/m; Power Drift = 0.08 dB

Peak SAR (extrapolated) = 0.231 W/kg

SAR(1 g) = 0.148 W/kg; SAR(10 g) = 0.094 W/kg

Maximum value of SAR (measured) = 0.199 W/kg



WCDMA Band IV

Frequency: 1712.4 MHz; Duty Cycle: 1:1; Room Ambient Temperature: 24.0°C; Liquid Temperature: 23.5°C

Medium parameters used: $f = 1713.1$ MHz; $\sigma = 1.46$ S/m; $\epsilon_r = 53.145$; $\rho = 1000$ kg/m³

DASY5 Configuration:

- Area Scan Setting - Find Secondary Maximum Within: 2.0 dB and with a peak SAR value greater than 0.0012W/kg
- Electronics: DAE3 Sn360; Calibrated: 2013/01/30
- Probe: EX3DV4 - SN3665; ConvF(7.89, 7.89, 7.89); Calibrated: 2012/04/27;
- Sensor-Surface: 1.4mm (Mechanical Surface Detection)
- Phantom: SAM 34; Type: SAM V4.0; Serial: TP-1150

Rear Side/WCDMA BandIV/CH1312/Area Scan (8x9x1): Measurement grid: dx=15mm, dy=15mm

Maximum value of SAR (measured) = 0.437 W/kg

Rear Side/WCDMA BandIV/CH1312/Zoom Scan (5x5x7)/Cube 0: Measurement grid: dx=8mm, dy=8mm, dz=5mm

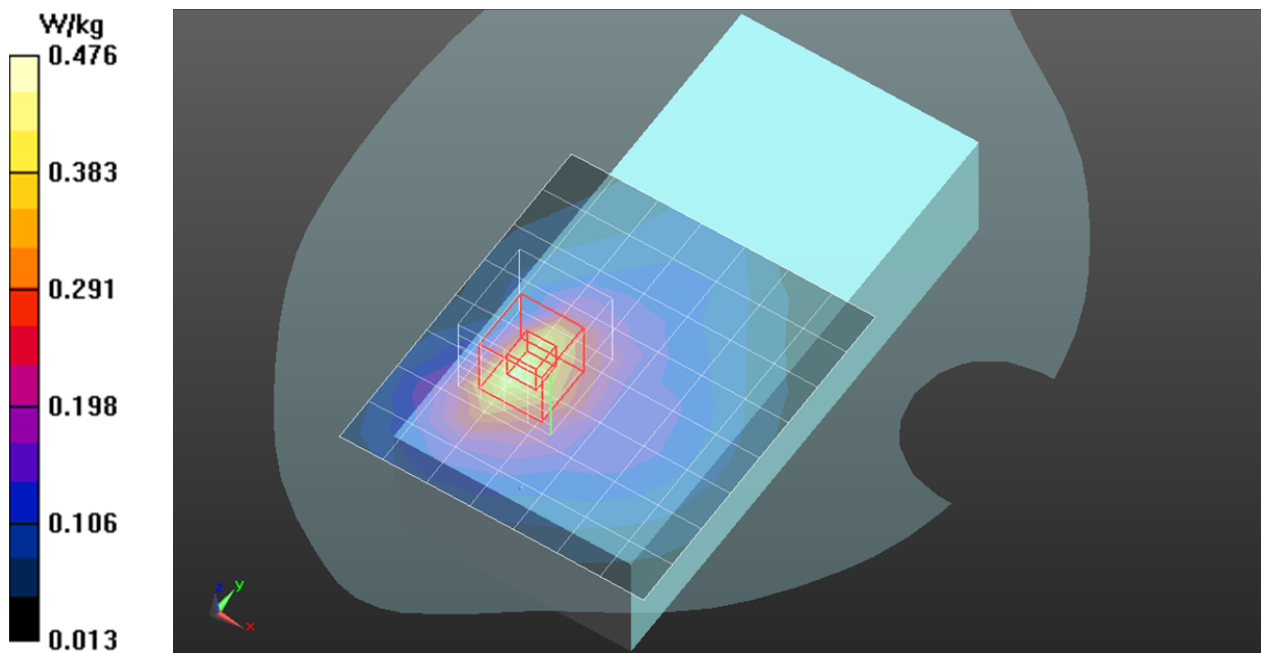
Reference Value = 9.253 V/m; Power Drift = 0.08 dB

Peak SAR (extrapolated) = 0.546 W/kg

Peak SAR (extrapolated) = 0.546 W/kg

SAR(1 g) = 0.341 W/kg; SAR(10 g) = 0.202 W/kg

Maximum value of SAR (measured) = 0.476 W/kg

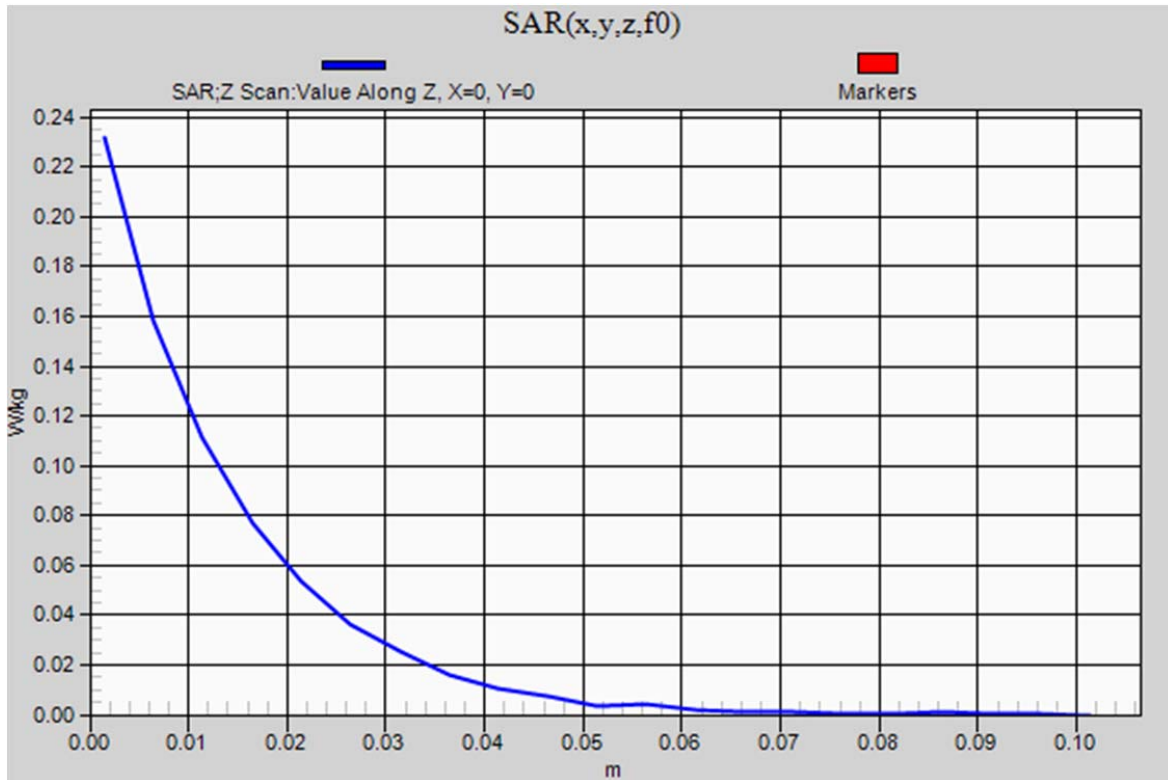


WCDMA Band IV

Frequency: 1712.4 MHz; Duty Cycle: 1:1

Rear Side/WCDMA BandIV/CH1312/Z Scan (1x1x21): Measurement grid: dx=20mm, dy=20mm, dz=5mm

Maximum value of SAR (measured) = 0.232 W/kg



WCDMA Band IV

Frequency: 1712.4 MHz; Duty Cycle: 1:1; Room Ambient Temperature: 24.0°C; Liquid Temperature: 23.5°C

Medium parameters used: $f = 1713.1$ MHz; $\sigma = 1.46$ S/m; $\epsilon_r = 53.145$; $\rho = 1000$ kg/m³

DASY5 Configuration:

- Area Scan Setting - Find Secondary Maximum Within: 2.0 dB and with a peak SAR value greater than 0.0012W/kg
- Electronics: DAE3 Sn360; Calibrated: 2013/01/30
- Probe: EX3DV4 - SN3665; ConvF(7.89, 7.89, 7.89); Calibrated: 2012/04/27;
- Sensor-Surface: 1.4mm (Mechanical Surface Detection)
- Phantom: SAM 34; Type: SAM V4.0; Serial: TP-1150

Rear Side/WCDMA BandIV/CH1312 Thick/Area Scan (8x9x1): Measurement grid: dx=15mm, dy=15mm

Maximum value of SAR (measured) = 0.271 W/kg

Rear Side/WCDMA BandIV/CH1312 Thick/Zoom Scan (5x5x7)/Cube 0: Measurement grid:

dx=8mm, dy=8mm, dz=5mm

Reference Value = 8.952 V/m; Power Drift = -0.09 dB

Peak SAR (extrapolated) = 0.320 W/kg

SAR(1 g) = 0.195 W/kg; SAR(10 g) = 0.119 W/kg

Maximum value of SAR (measured) = 0.273 W/kg

