

## 20130325\_System check\_Diple835v2 SN4d092

Frequency: 850 MHz; Duty Cycle: 1:1; Room Ambient Temperature: 24.0°C; Liquid Temperature: 23.5°C

Medium parameters used (interpolated):  $f = 850$  MHz;  $\sigma = 0.968$  S/m;  $\epsilon_r = 53.31$ ;  $\rho = 1000$  kg/m<sup>3</sup>

DASY5 Configuration:

- Area Scan Setting - Find Secondary Maximum Within: 2.0 dB and with a peak SAR value greater than 0.0012W/kg
- Electronics: DAE3 Sn360; Calibrated: 2013/01/30
- Probe: EX3DV4 - SN3665; ConvF(9.69, 9.69, 9.69); Calibrated: 2012/04/27;
- Sensor-Surface: 1.4mm (Mechanical Surface Detection)
- Phantom: SAM 34; Type: SAM V4.0; Serial: TP-1150

**Body/Pin=100mW, d=15mm/Area Scan (8x13x1):** Measurement grid: dx=15mm, dy=15mm

[Info: Interpolated medium parameters used for SAR evaluation.](#)

Maximum value of SAR (measured) = 1.33 W/kg

**Body/Pin=100mW, d=15mm/Zoom Scan (7x7x7)/Cube 0:** Measurement grid: dx=5mm, dy=5mm, dz=5mm

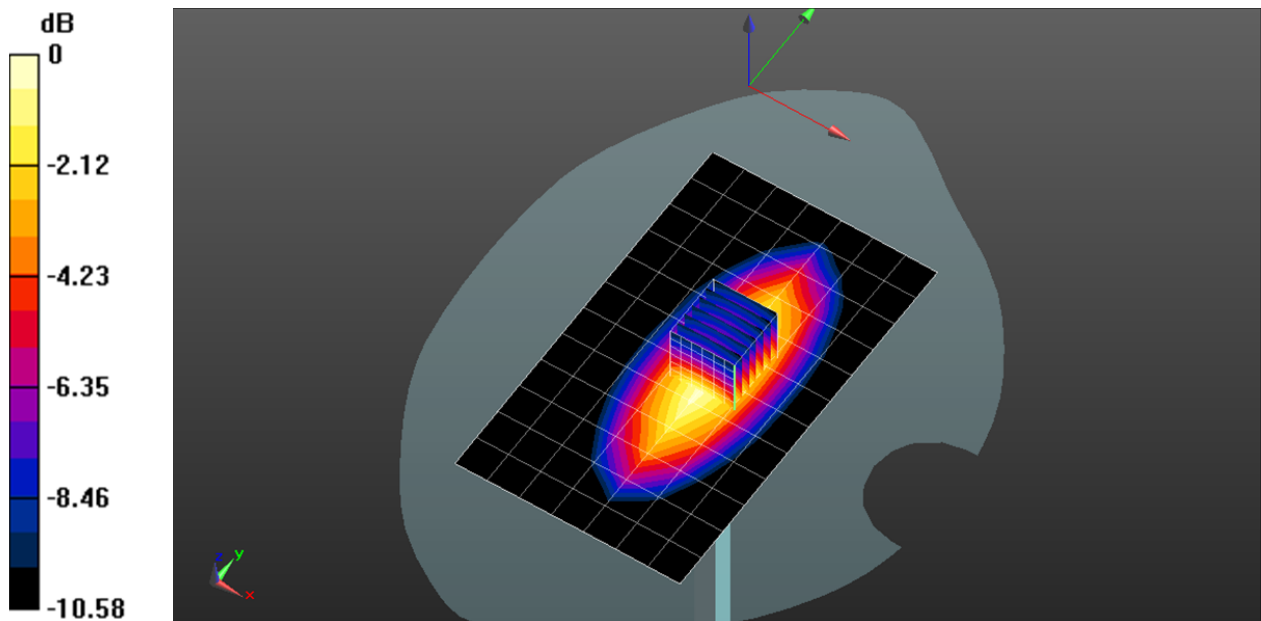
Reference Value = 37.998 V/m; Power Drift = 0.08 dB

Peak SAR (extrapolated) = 1.57 W/kg

**SAR(1 g) = 1.01 W/kg; SAR(10 g) = 0.663 W/kg**

[Info: Interpolated medium parameters used for SAR evaluation.](#)

Maximum value of SAR (measured) = 1.37 W/kg



0 dB = 1.37 W/kg = 1.37 dBW/kg

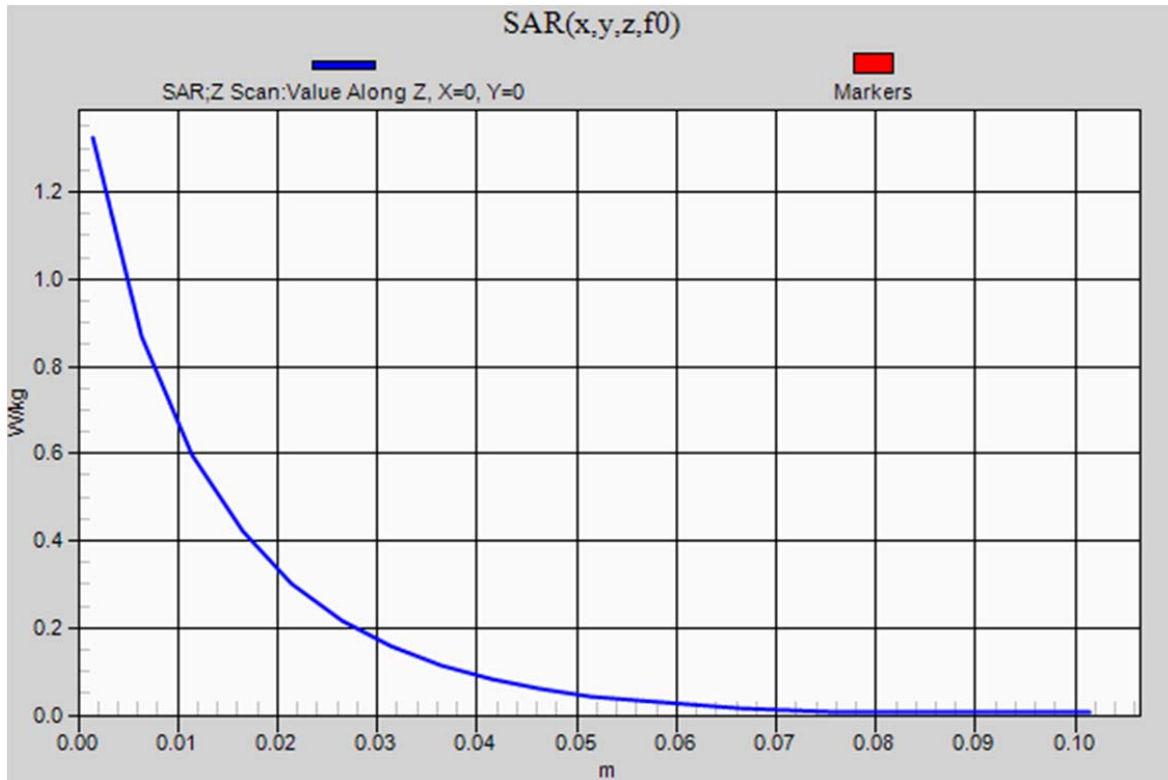
### 20130325\_System check\_Diple835v2 SN4d092

Frequency: 850 MHz; Duty Cycle: 1:1

**Body/Pin=100mW, d=15mm/Z Scan (1x1x21):** Measurement grid: dx=20mm, dy=20mm, dz=5mm

[Info: Interpolated medium parameters used for SAR evaluation.](#)

Maximum value of SAR (measured) = 1.32 W/kg



## 20130326\_System Check\_Diple1800v2 SN2d062

Frequency: 1800 MHz; Duty Cycle: 1:1; Room Ambient Temperature: 24.0°C; Liquid Temperature: 23.5°C

Medium parameters used (interpolated):  $f = 1800$  MHz;  $\sigma = 1.553$  S/m;  $\epsilon_r = 52.868$ ;  $\rho = 1000$  kg/m<sup>3</sup>

DASY5 Configuration:

- Area Scan Setting - Find Secondary Maximum Within: 2.0 dB and with a peak SAR value greater than 0.0012W/kg
- Electronics: DAE3 Sn360; Calibrated: 2013/01/30
- Probe: EX3DV4 - SN3665; ConvF(7.89, 7.89, 7.89); Calibrated: 2012/04/27;
- Sensor-Surface: 1.4mm (Mechanical Surface Detection)
- Phantom: SAM 34; Type: SAM V4.0; Serial: TP-1150

**Body/Pin=100mW, d=10mm/Area Scan (7x9x1):** Measurement grid: dx=15mm, dy=15mm

[Info: Interpolated medium parameters used for SAR evaluation.](#)

Maximum value of SAR (measured) = 5.77 W/kg

**Body/Pin=100mW, d=10mm/Zoom Scan (7x7x7)/Cube 0:** Measurement grid: dx=5mm, dy=5mm, dz=5mm

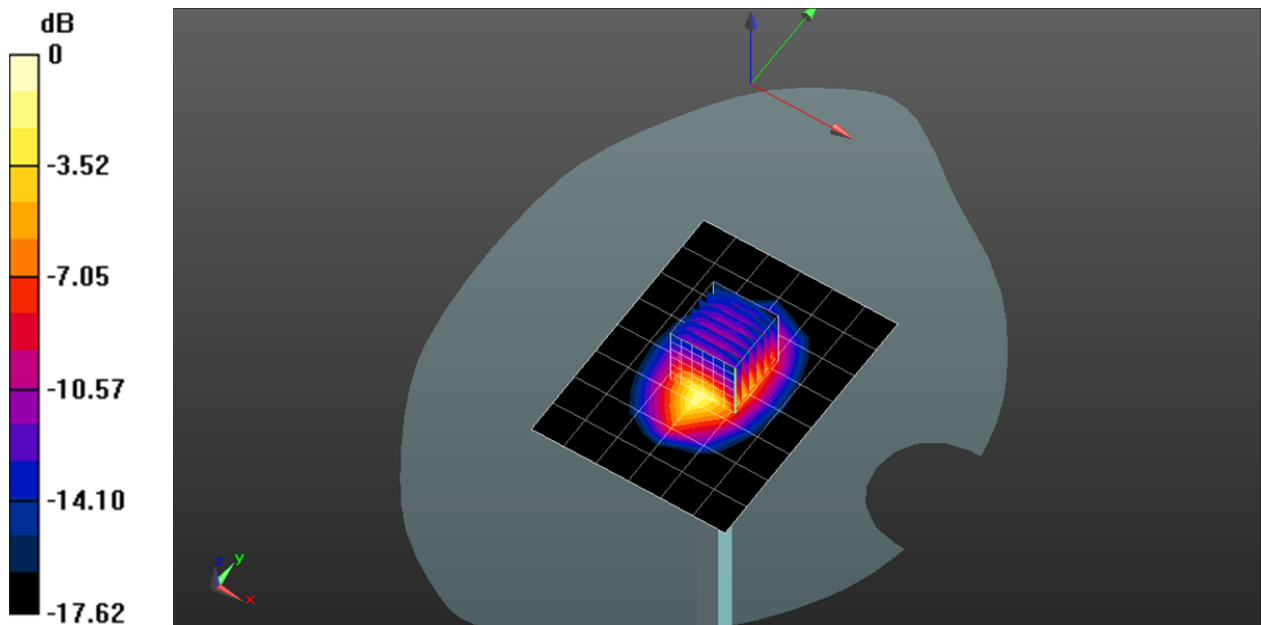
Reference Value = 64.760 V/m; Power Drift = -0.05 dB

Peak SAR (extrapolated) = 7.01 W/kg

**SAR(1 g) = 3.79 W/kg; SAR(10 g) = 1.98 W/kg**

[Info: Interpolated medium parameters used for SAR evaluation.](#)

Maximum value of SAR (measured) = 5.88 W/kg



0 dB = 5.88 W/kg = 7.69 dBW/kg

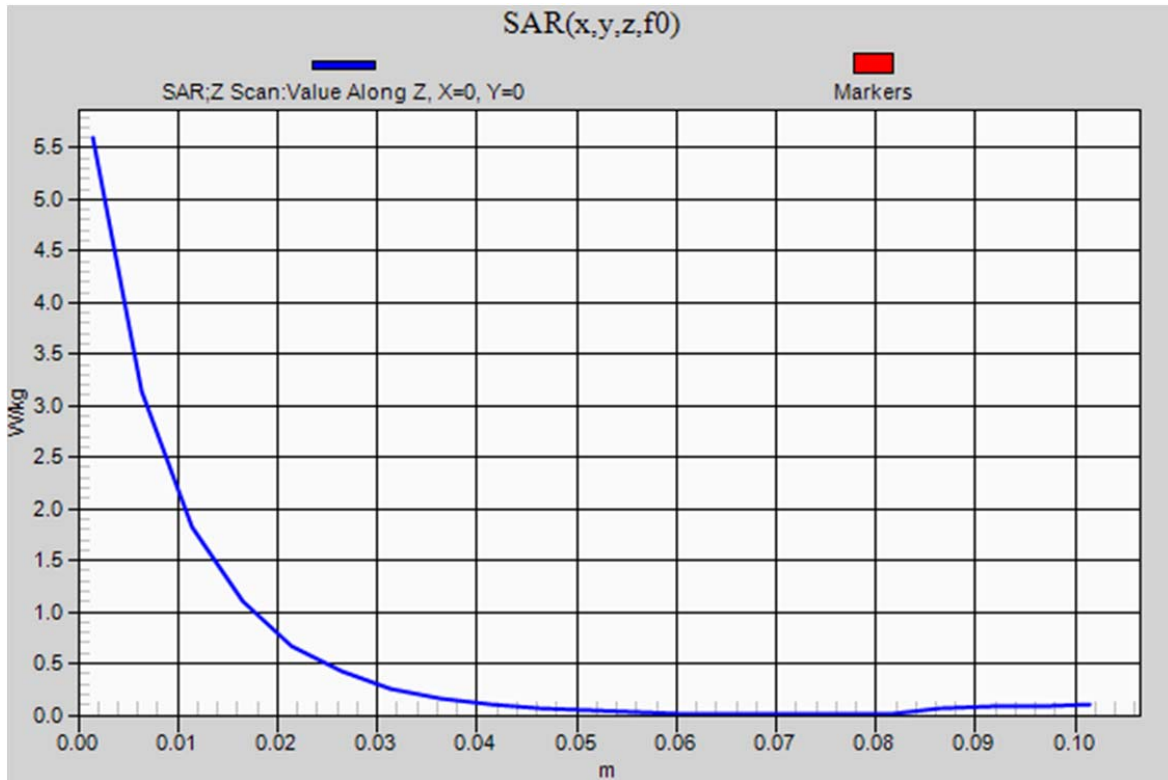
### 20130326\_System Check\_Diple1800v2 SN2d062

Frequency: 1800 MHz; Duty Cycle: 1:1

**Body/Pin=100mW, d=10mm/Z Scan (1x1x21):** Measurement grid: dx=20mm, dy=20mm, dz=5mm

[Info: Interpolated medium parameters used for SAR evaluation.](#)

Maximum value of SAR (measured) = 5.60 W/kg



## 20130326\_System Check\_Diple1900v2 SN5d056

Frequency: 1900 MHz; Duty Cycle: 1:1; Room Ambient Temperature: 24.0°C; Liquid Temperature: 23.5°C

Medium parameters used (interpolated):  $f = 1900$  MHz;  $\sigma = 1.51$  S/m;  $\epsilon_r = 51.324$ ;  $\rho = 1000$  kg/m<sup>3</sup>

DASY5 Configuration:

- Area Scan Setting - Find Secondary Maximum Within: 2.0 dB and with a peak SAR value greater than 0.0012W/kg
- Electronics: DAE3 Sn360; Calibrated: 2013/01/30
- Probe: EX3DV4 - SN3665; ConvF(7.49, 7.49, 7.49); Calibrated: 2012/04/27;
- Sensor-Surface: 1.4mm (Mechanical Surface Detection (Locations From Previous Scan Used)), Sensor-Surface: 1.4mm (Mechanical Surface Detection)
- Phantom: SAM 34; Type: SAM V4.0; Serial: TP-1150

**Body/Pin=100mW, d=10mm/Area Scan (7x9x1):** Measurement grid: dx=15mm, dy=15mm

Info: [Interpolated medium parameters used for SAR evaluation.](#)

Maximum value of SAR (measured) = 6.02 W/kg

**Body/Pin=100mW, d=10mm/Zoom Scan (7x7x7)/Cube 0:** Measurement grid: dx=5mm, dy=5mm, dz=5mm

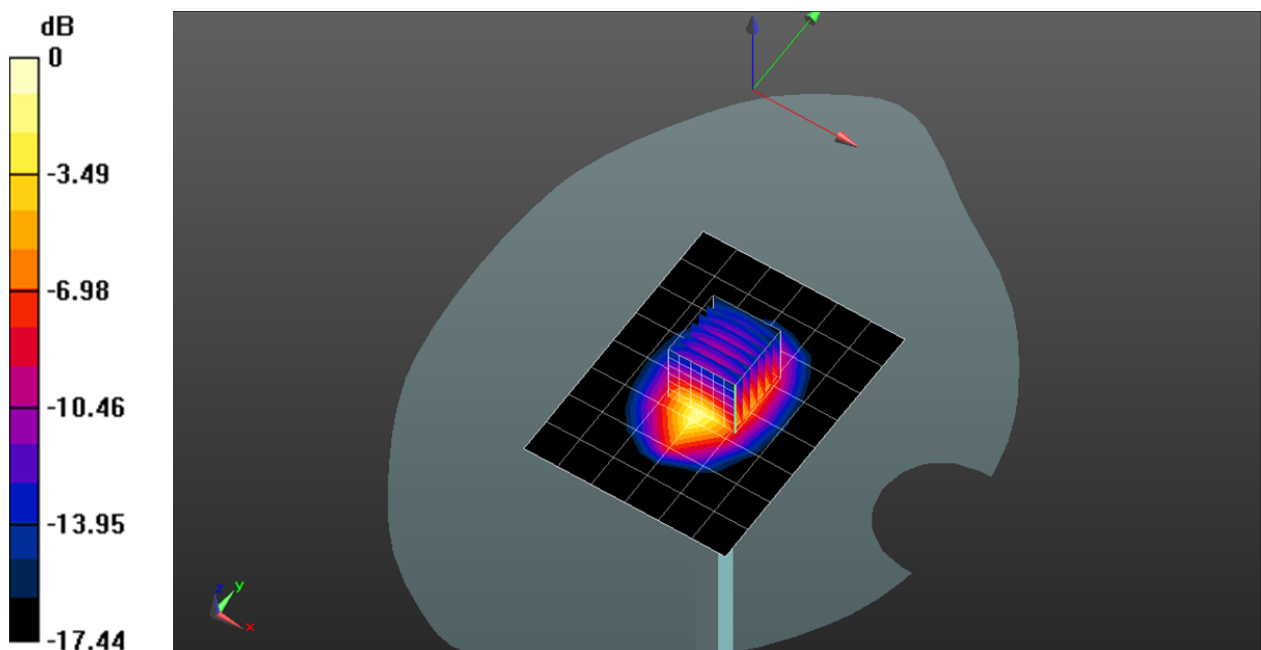
Reference Value = 65.396 V/m; Power Drift = 0.1 dB

Peak SAR (extrapolated) = 6.86 W/kg

**SAR(1 g) = 3.76 W/kg; SAR(10 g) = 1.99 W/kg**

Info: [Interpolated medium parameters used for SAR evaluation.](#)

Maximum value of SAR (measured) = 5.77 W/kg



0 dB = 5.77 W/kg = 7.61 dBW/kg

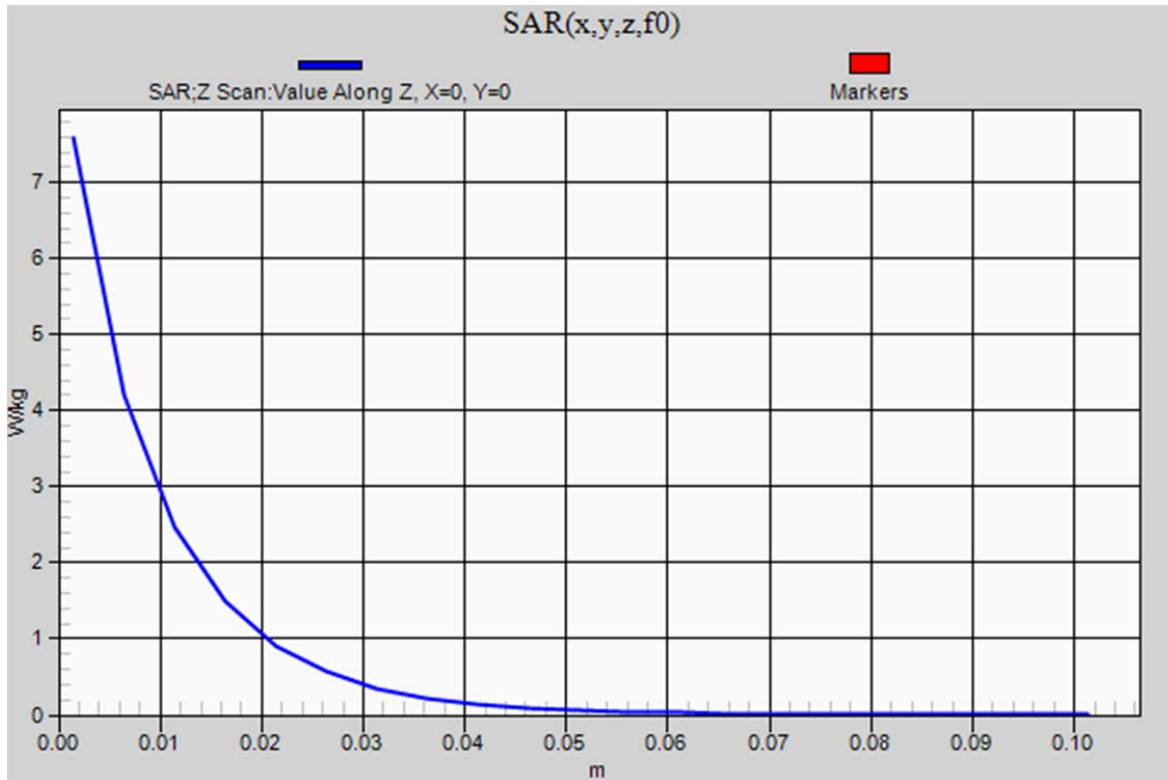
### 20130326\_System Check\_Dipole1900v2 SN5d056

Frequency: 1900 MHz; Duty Cycle: 1:1

**Body/Pin=100mW, d=10mm/Z Scan (1x1x21):** Measurement grid: dx=20mm, dy=20mm, dz=5mm

[Info: Interpolated medium parameters used for SAR evaluation.](#)

Maximum value of SAR (measured) = 7.58 W/kg



## 20130327\_System check\_Diple2450v2 SN728

Frequency: 2450 MHz; Duty Cycle: 1:1; Room Ambient Temperature: 24.0°C; Liquid Temperature: 23.5°C

Medium parameters used (interpolated):  $f = 2450$  MHz;  $\sigma = 1.976$  S/m;  $\epsilon_r = 51.08$ ;  $\rho = 1000$  kg/m<sup>3</sup>

DASY5 Configuration:

- Area Scan Setting - Find Secondary Maximum Within: 2.0 dB and with a peak SAR value greater than 0.0012W/kg
- Electronics: DAE3 Sn360; Calibrated: 2013/01/30
- Probe: EX3DV4 - SN3665; ConvF(7.11, 7.11, 7.11); Calibrated: 2012/04/27;
- Sensor-Surface: 1.4mm (Mechanical Surface Detection)
- Phantom: SAM 34; Type: SAM V4.0; Serial: TP-1150

**Body/Pin=100mW, d=10mm/Area Scan (7x9x1):** Measurement grid: dx=15mm, dy=15mm

[Info: Interpolated medium parameters used for SAR evaluation.](#)

Maximum value of SAR (measured) = 8.62 W/kg

**Body/Pin=100mW, d=10mm/Zoom Scan (7x7x7)/Cube 0:** Measurement grid: dx=5mm, dy=5mm, dz=5mm

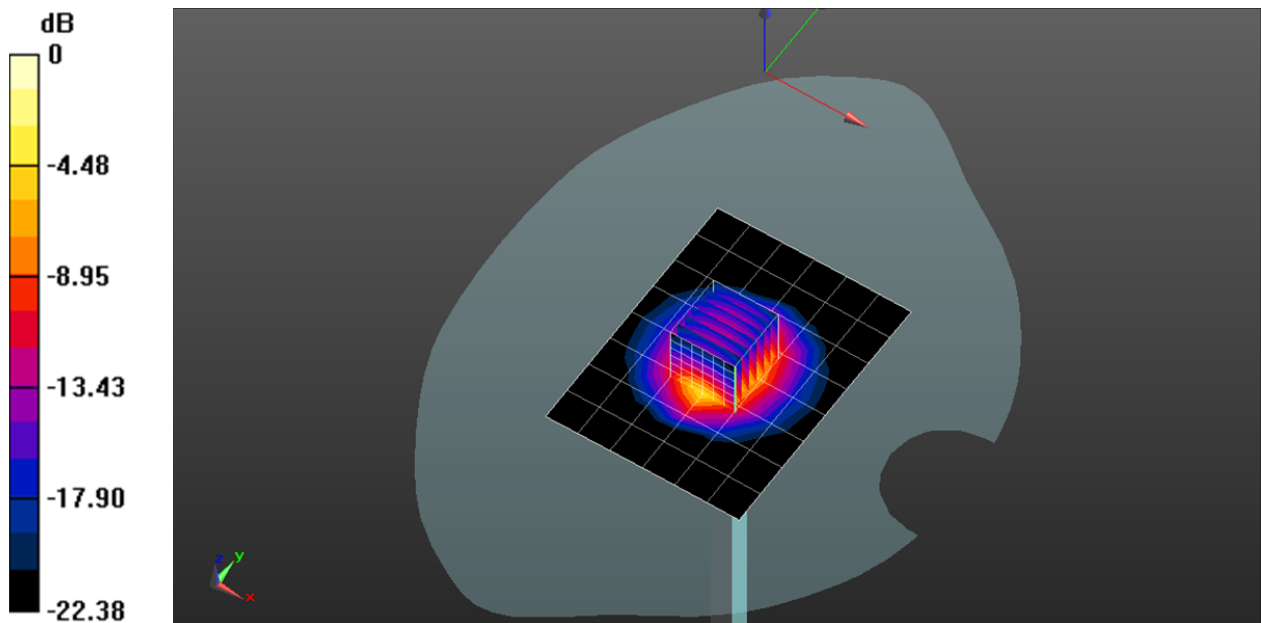
Reference Value = 67.769 V/m; Power Drift = 0.03 dB

Peak SAR (extrapolated) = 11.0 W/kg

**SAR(1 g) = 5.08 W/kg; SAR(10 g) = 2.34 W/kg**

[Info: Interpolated medium parameters used for SAR evaluation.](#)

Maximum value of SAR (measured) = 8.60 W/kg



0 dB = 8.60 W/kg = 9.34 dBW/kg

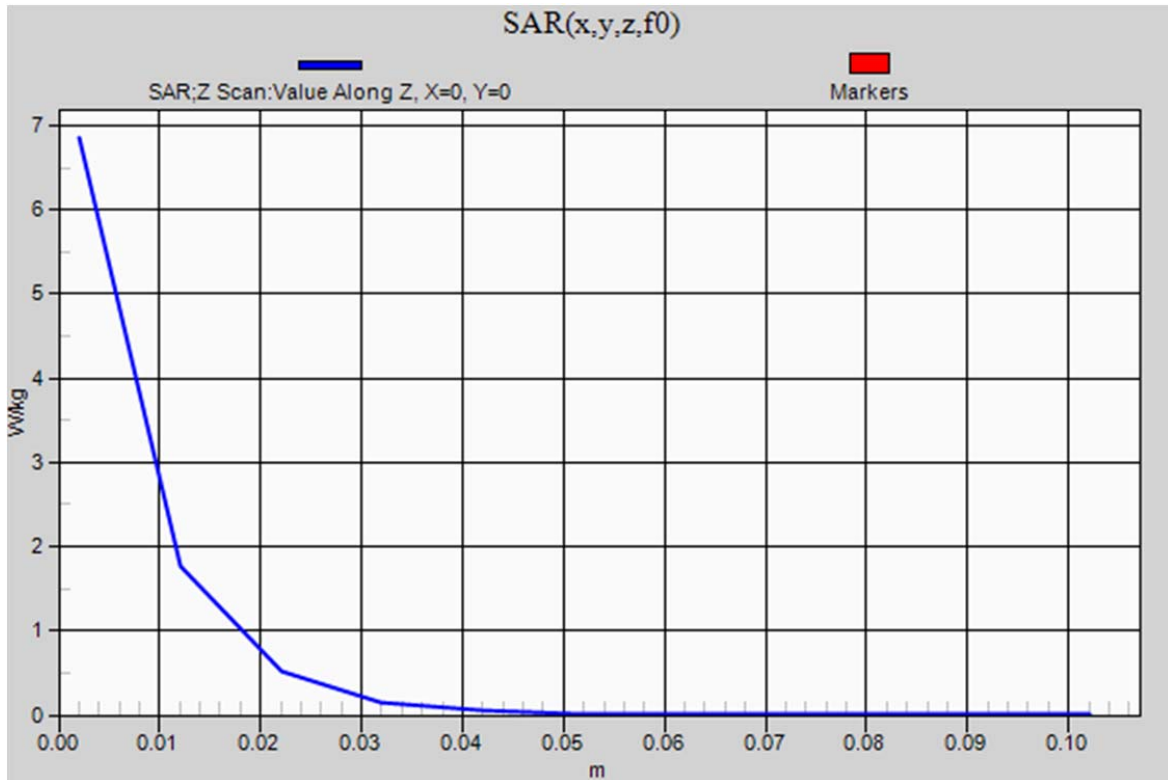
### 20130327\_System check\_Diple2450v2 SN728

Frequency: 2450 MHz; Duty Cycle: 1:1

**Body/Pin=100mW, d=10mm/Z Scan (1x1x21):** Measurement grid: dx=20mm, dy=20mm, dz=10mm

[Info: Interpolated medium parameters used for SAR evaluation.](#)

Maximum value of SAR (measured) = 6.85 W/kg





## 20130328\_System check\_Diple5GHzv2 SN1004

Frequency: 5200 MHz; Duty Cycle: 1:1; Room Ambient Temperature: 24.5°C; Liquid Temperature: 24.0°C

Medium parameters used (interpolated):  $f = 5200$  MHz;  $\sigma = 5.16$  S/m;  $\epsilon_r = 48.519$ ;  $\rho = 1000$  kg/m<sup>3</sup>

DASY5 Configuration:

- Area Scan Setting - Find Secondary Maximum Within: 2.0 dB and with a peak SAR value greater than 0.0012W/kg
- Electronics: DAE3 Sn360; Calibrated: 2013/01/30
- Probe: EX3DV4 - SN3665; ConvF(4.26, 4.26, 4.26); Calibrated: 2012/04/27;
- Sensor-Surface: 1.4mm (Mechanical Surface Detection)
- Phantom: SAM 34; Type: SAM V4.0; Serial: TP-1150

**Body/5200MHz,Pin=100mW,d=10mm/Area Scan (7x7x1):** Measurement grid: dx=10mm, dy=10mm

[Info: Interpolated medium parameters used for SAR evaluation.](#)

Maximum value of SAR (measured) = 18.7 W/kg

**Body/5200MHz,Pin=100mW,d=10mm/Zoom Scan (7x7x6)/Cube 0:** Measurement grid: dx=4mm, dy=4mm, dz=1.4mm

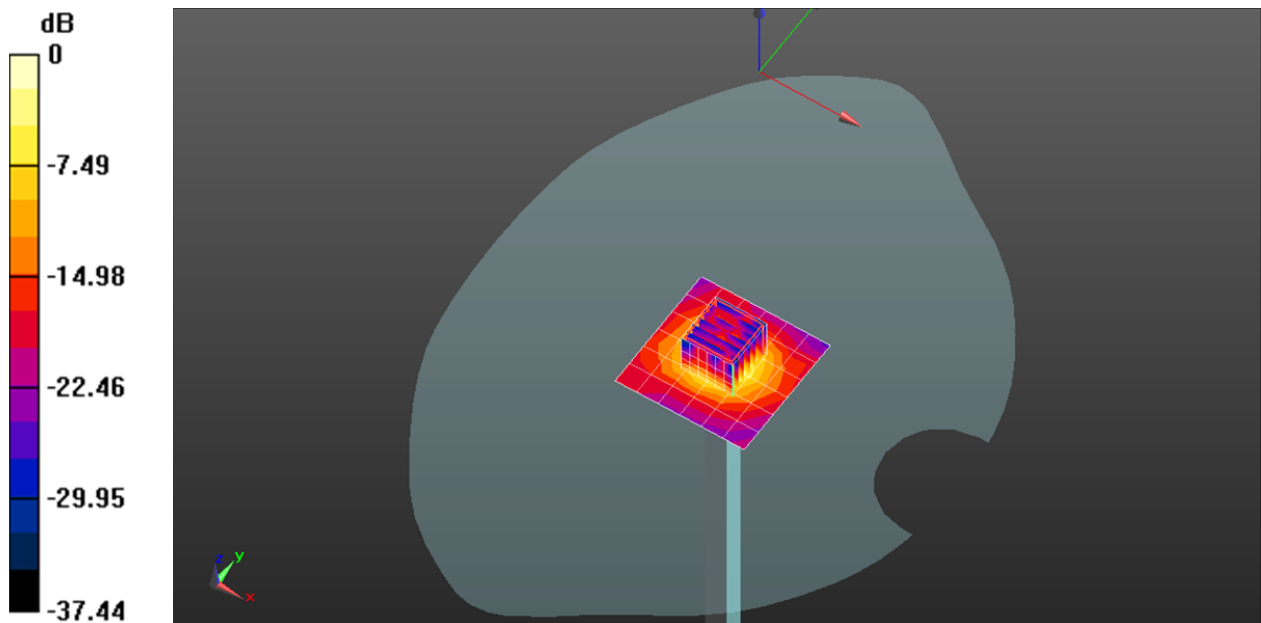
Reference Value = 43.599 V/m; Power Drift = -0.02 dB

Peak SAR (extrapolated) = 26.6 W/kg

**SAR(1 g) = 7.11 W/kg; SAR(10 g) = 2.05 W/kg**

[Info: Interpolated medium parameters used for SAR evaluation.](#)

Maximum value of SAR (measured) = 17.6 W/kg



0 dB = 17.6 W/kg = 12.46 dBW/kg

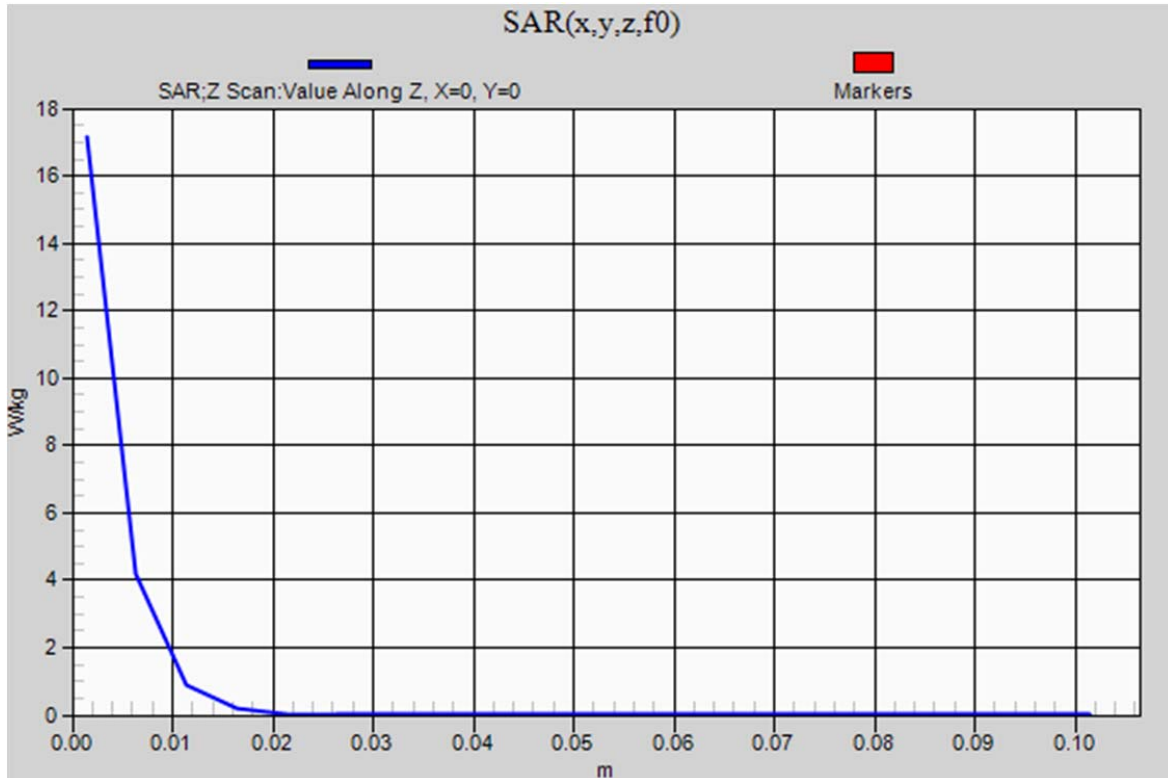
### 20130328\_System check\_Diple5GHzv2 SN1004

Frequency: 5200 MHz; Duty Cycle: 1:1

**Body/5200MHz,Pin=100mW,d=10mm/Z Scan (1x1x21):** Measurement grid: dx=20mm, dy=20mm, dz=5mm

[Info: Interpolated medium parameters used for SAR evaluation.](#)

Maximum value of SAR (measured) = 17.2 W/kg



## 20130328\_System check\_Diple5GHzv2 SN1004

Frequency: 5300 MHz; Duty Cycle: 1:1; Room Ambient Temperature: 24.5°C; Liquid Temperature: 24.0°C

Medium parameters used:  $f = 5300.2$  MHz;  $\sigma = 5.28$  S/m;  $\epsilon_r = 48.406$ ;  $\rho = 1000$  kg/m<sup>3</sup>

DASY5 Configuration:

- Area Scan Setting - Find Secondary Maximum Within: 2.0 dB and with a peak SAR value greater than 0.0012W/kg
- Electronics: DAE3 Sn360; Calibrated: 2013/01/30
- Probe: EX3DV4 - SN3665; ConvF(4.01, 4.01, 4.01); Calibrated: 2012/04/27;
- Sensor-Surface: 1.4mm (Mechanical Surface Detection)
- Phantom: SAM 34; Type: SAM V4.0; Serial: TP-1150

**Body/5300MHz,Pin=100mW,d=10mm/Area Scan (7x7x1):** Measurement grid: dx=10mm, dy=10mm

Maximum value of SAR (measured) = 17.4 W/kg

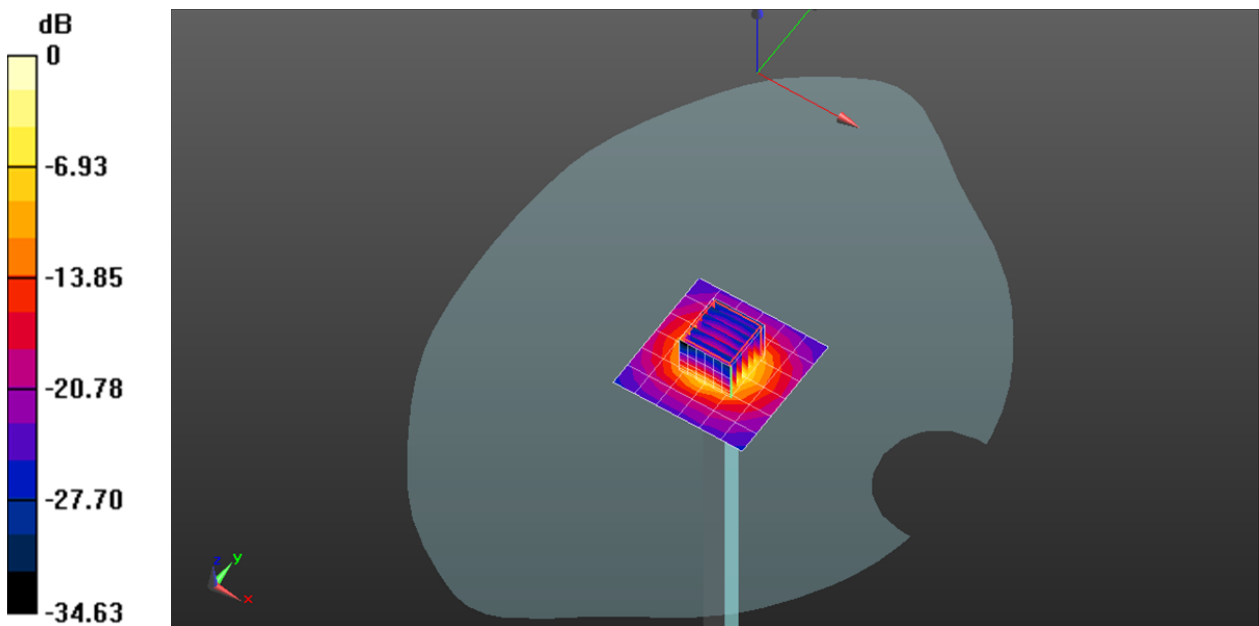
**Body/5300MHz,Pin=100mW,d=10mm/Zoom Scan (7x7x6)/Cube 0:** Measurement grid: dx=4mm, dy=4mm, dz=1.4mm

Reference Value = 41.567 V/m; Power Drift = 0.02 dB

Peak SAR (extrapolated) = 28.4 W/kg

**SAR(1 g) = 7.61 W/kg; SAR(10 g) = 2.15 W/kg**

Maximum value of SAR (measured) = 19.1 W/kg



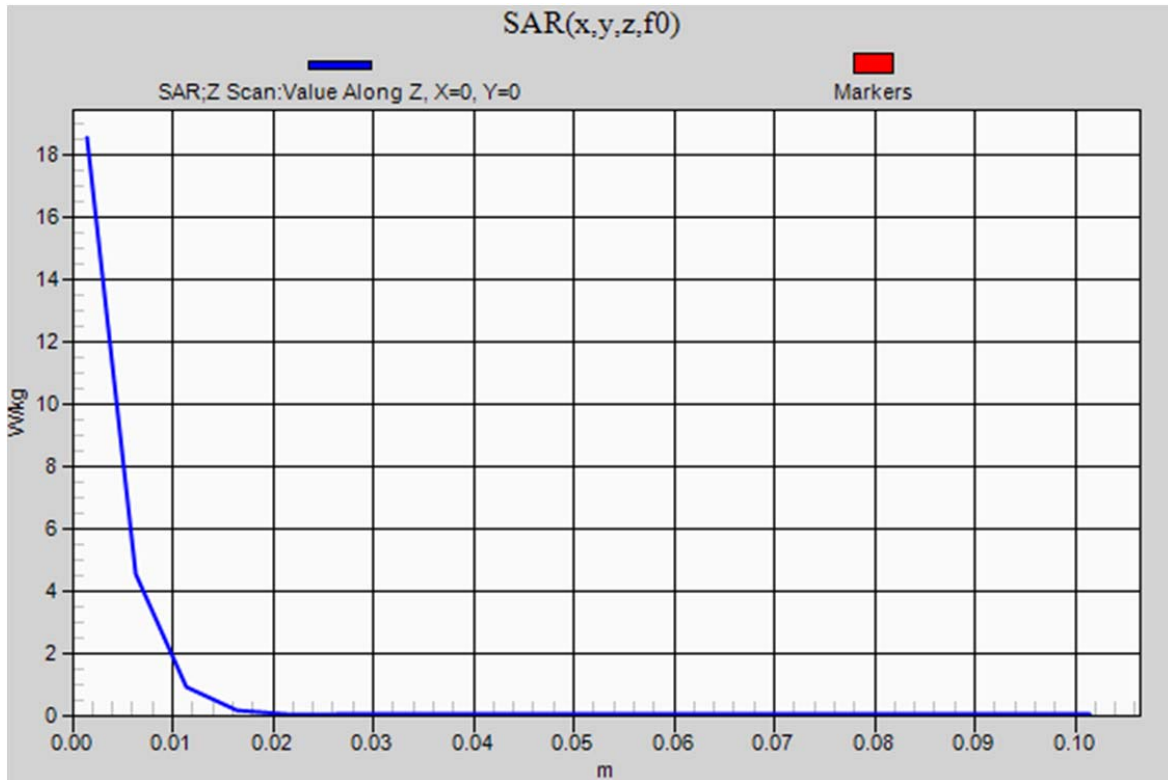
0 dB = 19.1 W/kg = 12.81 dBW/kg

### 20130328\_System check\_Diple5GHzv2 SN1004

Frequency: 5300 MHz; Duty Cycle: 1:1

**Body/5300MHz,Pin=100mW,d=10mm/Z Scan (1x1x21):** Measurement grid: dx=20mm, dy=20mm, dz=5mm

Maximum value of SAR (measured) = 18.5 W/kg



## 20130329\_System check\_Diple5GHzv2 SN1004

Frequency: 5600 MHz; Duty Cycle: 1:1; Room Ambient Temperature: 24.5°C; Liquid Temperature: 24.0°C

Medium parameters used:  $f = 5600.5$  MHz;  $\sigma = 5.657$  S/m;  $\epsilon_r = 47.9$ ;  $\rho = 1000$  kg/m<sup>3</sup>

DASY5 Configuration:

- Area Scan Setting - Find Secondary Maximum Within: 2.0 dB and with a peak SAR value greater than 0.0012W/kg
- Electronics: DAE3 Sn360; Calibrated: 2013/01/30
- Probe: EX3DV4 - SN3665; ConvF(3.41, 3.41, 3.41); Calibrated: 2012/04/27;
- Sensor-Surface: 1.4mm (Mechanical Surface Detection)
- Phantom: SAM 34; Type: SAM V4.0; Serial: TP-1150

**Body/5600MHz,Pin=100mW,d=10mm/Area Scan (7x7x1):** Measurement grid: dx=10mm, dy=10mm

Maximum value of SAR (measured) = 18.4 W/kg

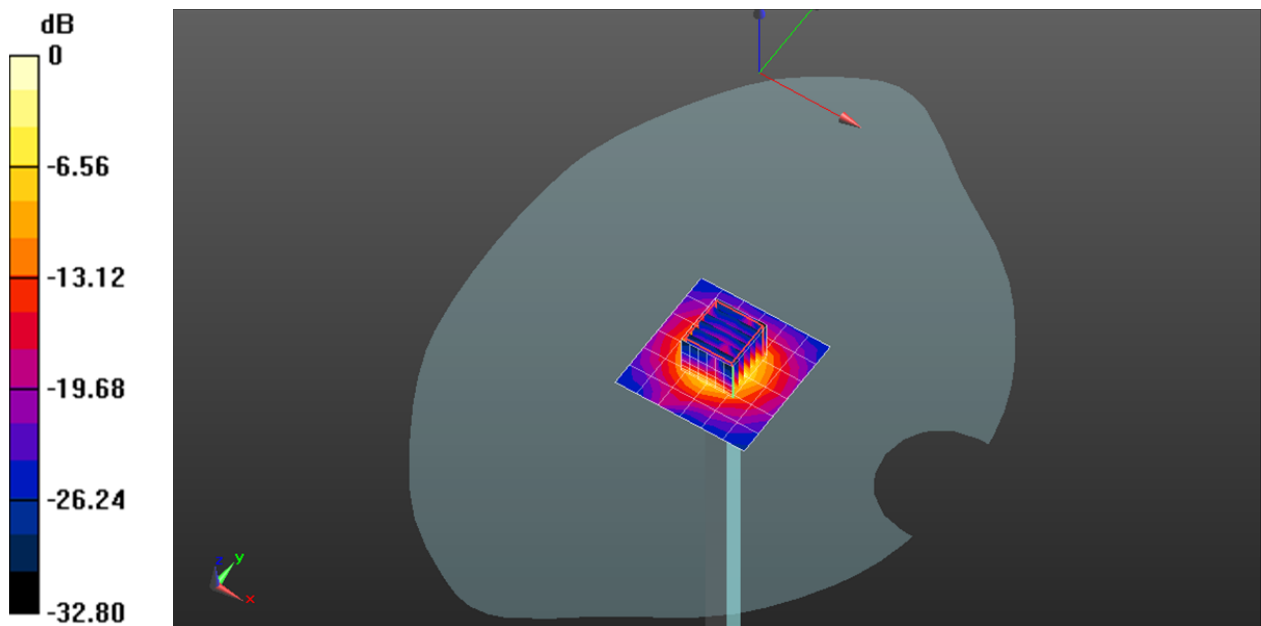
**Body/5600MHz,Pin=100mW,d=10mm/Zoom Scan (7x7x6)/Cube 0:** Measurement grid: dx=4mm, dy=4mm, dz=1.4mm

Reference Value = 40.769 V/m; Power Drift = 0.08 dB

Peak SAR (extrapolated) = 30.2 W/kg

**SAR(1 g) = 7.84 W/kg; SAR(10 g) = 2.21 W/kg**

Maximum value of SAR (measured) = 19.9 W/kg



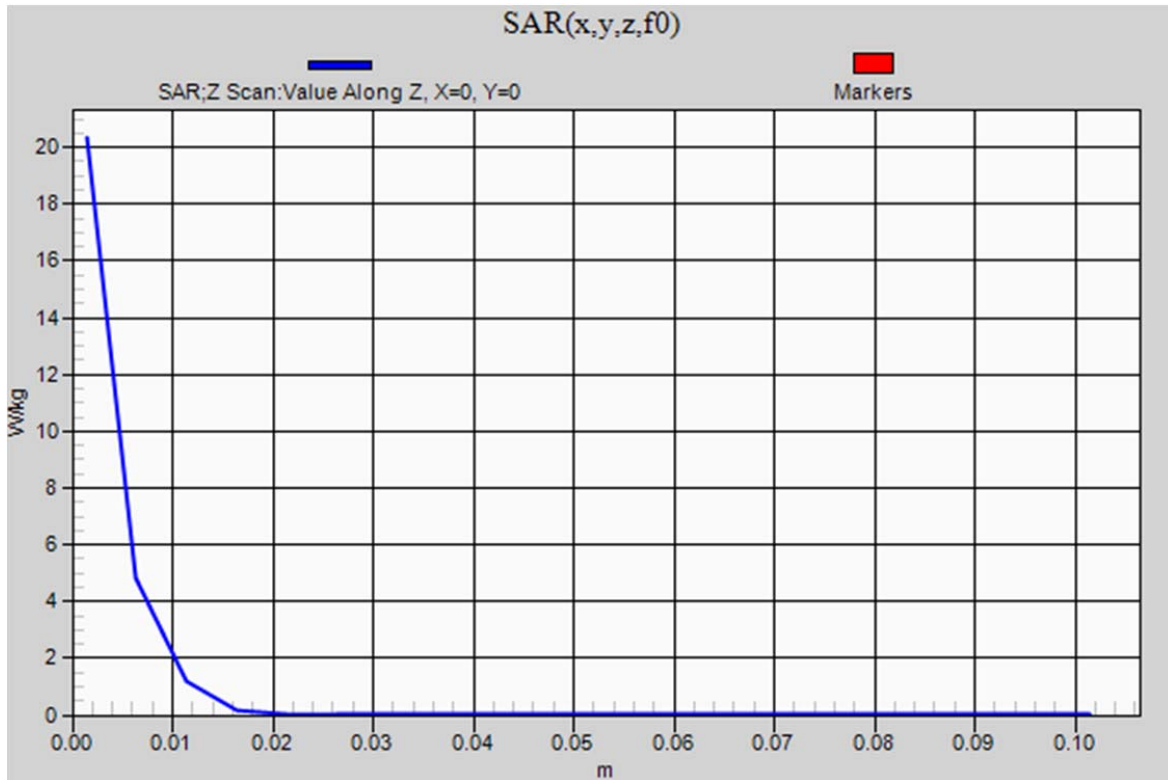
0 dB = 19.9 W/kg = 12.99 dBW/kg

### 20130329\_System check\_Diple5GHzv2 SN1004

Frequency: 5600 MHz; Duty Cycle: 1:1

**Body/5600MHz,Pin=100mW,d=10mm/Z Scan (1x1x21):** Measurement grid: dx=20mm, dy=20mm, dz=5mm

Maximum value of SAR (measured) = 20.3 W/kg



## 20130330\_System check\_Diple5GHzv2 SN1004

Frequency: 5800 MHz; Duty Cycle: 1:1; Room Ambient Temperature: 24.5°C; Liquid Temperature: 24.0°C

Medium parameters used (interpolated):  $f = 5800$  MHz;  $\sigma = 5.824$  S/m;  $\epsilon_r = 47.589$ ;  $\rho = 1000$  kg/m<sup>3</sup>

DASY5 Configuration:

- Area Scan Setting - Find Secondary Maximum Within: 2.0 dB and with a peak SAR value greater than 0.0012W/kg
- Electronics: DAE3 Sn360; Calibrated: 2013/01/30
- Probe: EX3DV4 - SN3665; ConvF(4.14, 4.14, 4.14); Calibrated: 2012/04/27;
- Sensor-Surface: 1.4mm (Mechanical Surface Detection)
- Phantom: SAM 34; Type: SAM V4.0; Serial: TP-1150

**Body/5800MHz,Pin=100mW,d=10mm/Area Scan (7x7x1):** Measurement grid: dx=10mm, dy=10mm

[Info: Interpolated medium parameters used for SAR evaluation.](#)

Maximum value of SAR (measured) = 19.3 W/kg

**Body/5800MHz,Pin=100mW,d=10mm/Zoom Scan (7x7x6)/Cube 0:** Measurement grid: dx=4mm, dy=4mm, dz=1.4mm

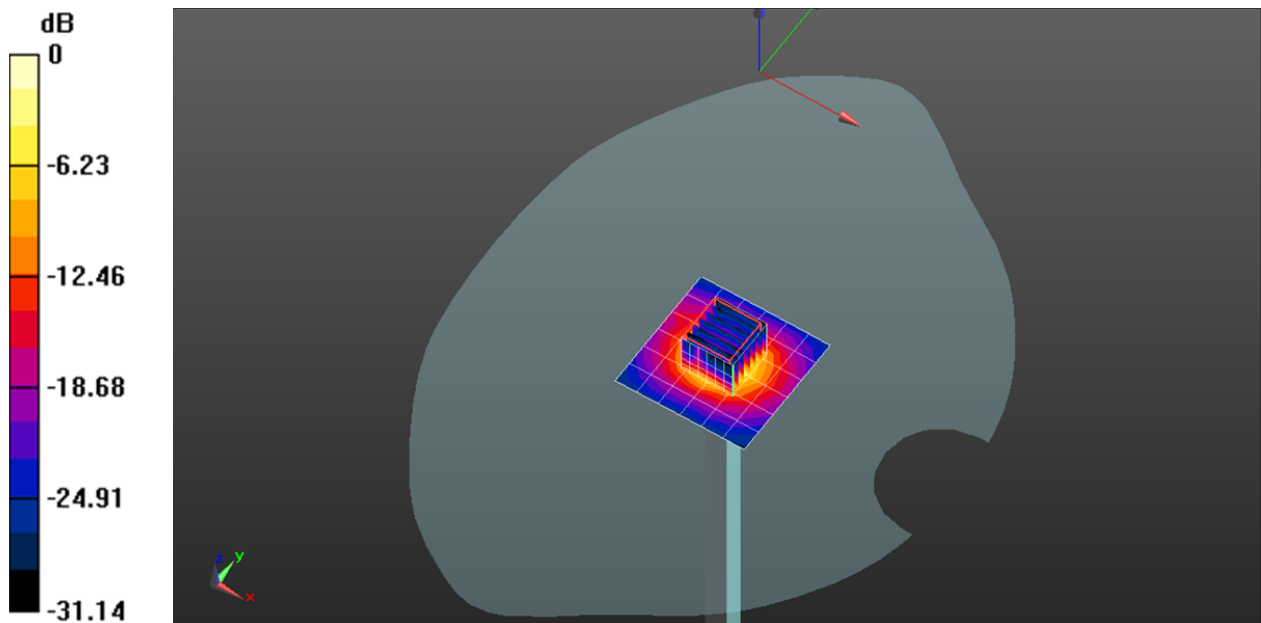
Reference Value = 35.180 V/m; Power Drift = 0.08 dB

Peak SAR (extrapolated) = 32.7 W/kg

**SAR(1 g) = 7.49 W/kg; SAR(10 g) = 2.11 W/kg**

[Info: Interpolated medium parameters used for SAR evaluation.](#)

Maximum value of SAR (measured) = 19.7 W/kg



0 dB = 19.7 W/kg = 12.94 dBW/kg

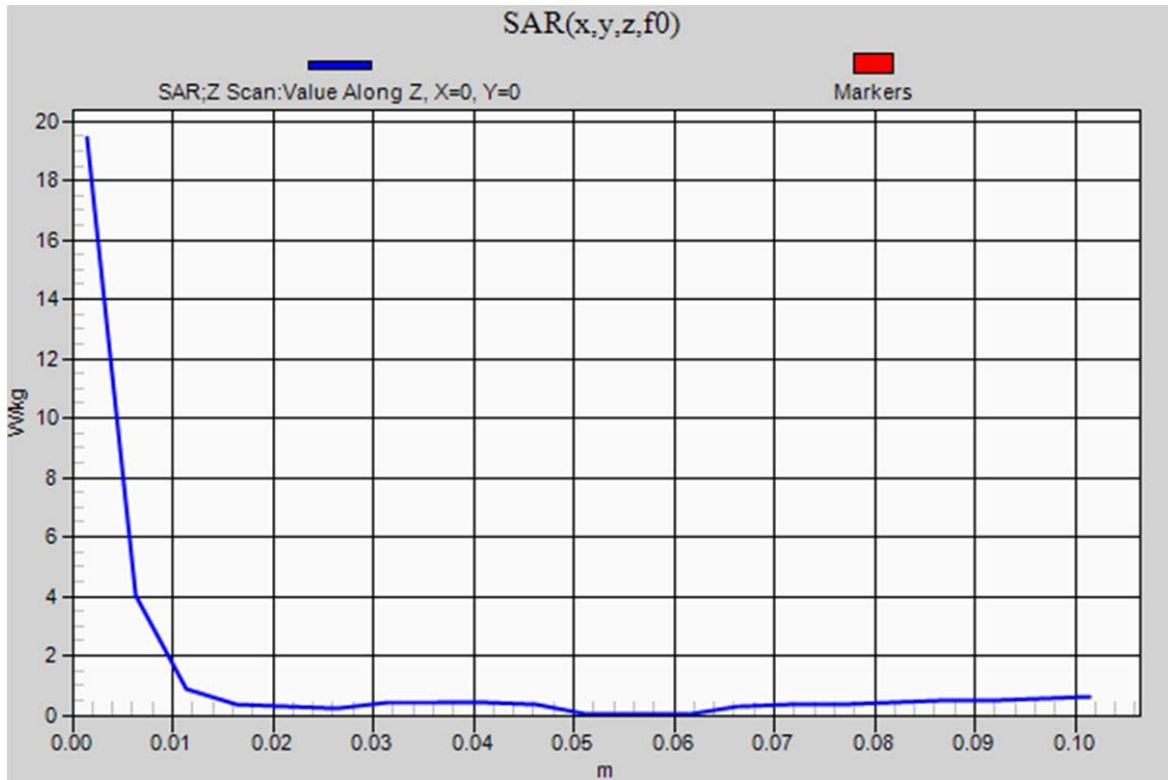
### 20130330\_System check\_Diple5GHzv2 SN1004

Frequency: 5800 MHz; Duty Cycle: 1:1

**Body/5800MHz,Pin=100mW,d=10mm/Z Scan (1x1x21):** Measurement grid: dx=20mm, dy=20mm, dz=5mm

[Info: Interpolated medium parameters used for SAR evaluation.](#)

Maximum value of SAR (measured) = 19.4 W/kg





## 20130401\_System check\_Diple5GHzv2 SN1004

Frequency: 5800 MHz; Duty Cycle: 1:1; Room Ambient Temperature: 24.5°C; Liquid Temperature: 24.0°C

Medium parameters used (interpolated):  $f = 5800$  MHz;  $\sigma = 6.068$  S/m;  $\epsilon_r = 48.283$ ;  $\rho = 1000$  kg/m<sup>3</sup>

DASY5 Configuration:

- Area Scan Setting - Find Secondary Maximum Within: 2.0 dB and with a peak SAR value greater than 0.0012W/kg
- Electronics: DAE3 Sn360; Calibrated: 2013/01/30
- Probe: EX3DV4 - SN3665; ConvF(4.14, 4.14, 4.14); Calibrated: 2012/04/27;
- Sensor-Surface: 1.4mm (Mechanical Surface Detection)
- Phantom: SAM 34; Type: SAM V4.0; Serial: TP-1150

**Body/5800MHz,Pin=100mW,d=10mm/Area Scan (7x7x1):** Measurement grid: dx=10mm, dy=10mm

[Info: Interpolated medium parameters used for SAR evaluation.](#)

Maximum value of SAR (measured) = 18.3 W/kg

**Body/5800MHz,Pin=100mW,d=10mm/Zoom Scan (7x7x6)/Cube 0:** Measurement grid: dx=4mm, dy=4mm, dz=1.4mm

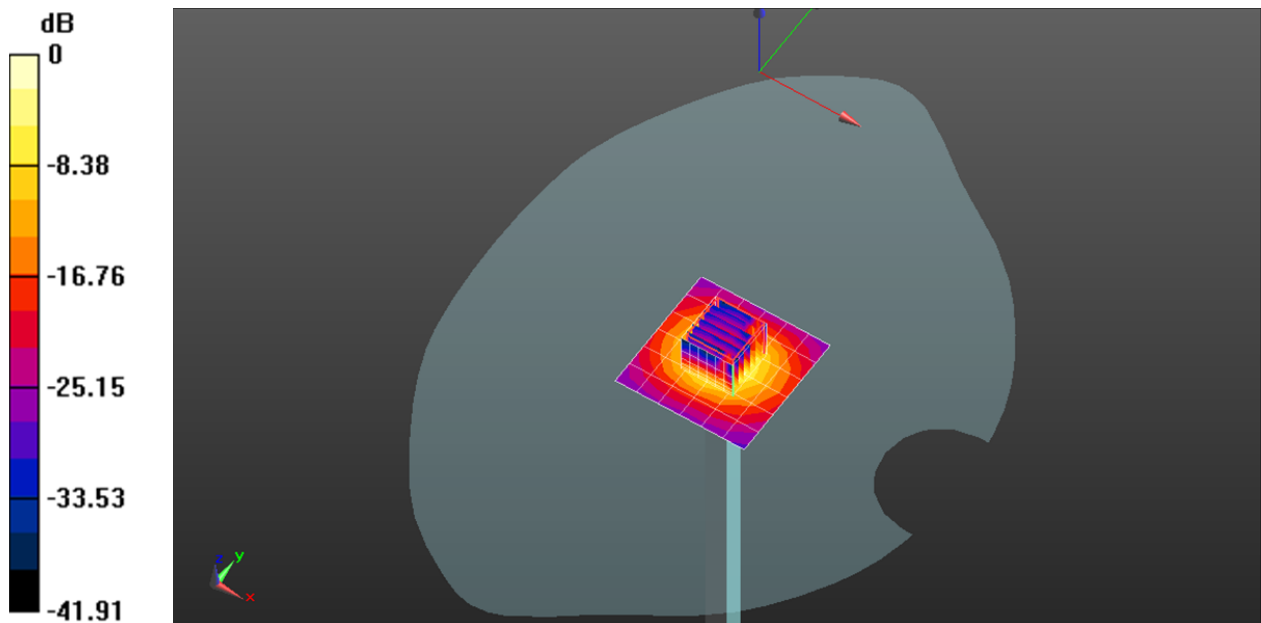
Reference Value = 37.600 V/m; Power Drift = 0.05 dB

Peak SAR (extrapolated) = 31.8 W/kg

**SAR(1 g) = 7.2 W/kg; SAR(10 g) = 2.04 W/kg**

[Info: Interpolated medium parameters used for SAR evaluation.](#)

Maximum value of SAR (measured) = 19.0 W/kg



0 dB = 19.0 W/kg = 12.79 dBW/kg

### 20130401\_System check\_Diple5GHzv2 SN1004

Frequency: 5800 MHz; Duty Cycle: 1:1

**Body/5800MHz,Pin=100mW,d=10mm/Z Scan (1x1x21):** Measurement grid: dx=20mm, dy=20mm, dz=5mm

[Info: Interpolated medium parameters used for SAR evaluation.](#)

Maximum value of SAR (measured) = 18.5 W/kg

