

A1010 Cradle

User's Manual

WARNING

This equipment has been tested and found to comply with the limits for a Class B digital device, pursuant to Part 15 of FCC Rules. These limits are designed to provide reasonable protection against harmful interference in a residential installation. This equipment generates, uses and can radiate radio frequency energy and, if not installed and used in accordance with the instructions, may cause harmful interference to radio communications. However, there is no guarantee that interference will not occur in a particular installation. If this equipment does cause harmful interference to radio or television reception, which can be determined by turning the equipment off and on, the user is encouraged to try correct the interference by one or more of the following measures:

- Reorient or relocate the receiving antenna.
- Increase the separation between the equipment and receiver.
- Connect the equipment into an outlet on a circuit different from that to which the receiver is connected.
- Consult the dealer or an experienced radio/TV technician for help.

If applicable, as below

FCC Caution: To assure continued compliance, (example – use only shielded interface cables when connecting to computer or peripheral devices). Any changes or modifications not expressly approved by the party responsible for compliance could void the user's authority to operate this equipment.

This transmitter must not be co-located or operating in conjunction with any other antenna or transmitter.

FCC Radiation Exposure Statement

This equipment complies with FCC radiation exposure limits set forth for an uncontrolled environment. This equipment should be installed and operated with minimum distance 20 cm between the radiator & your body.

This device complies with Part 15 of the FCC Rules. Operation is subject to the following two conditions: (1) This device may not cause harmful interference, and (2) this device must accept any interference received, including interference that may cause undesired operation.

Table of Contents

1. INTRODUCTION.....	<u>0</u>
2. CRADLE INSTALLATION	1
2.1 POWER UP THE CRADLE BASE STATION	2
2.4 CHARGING CIPHERLAB 1166/1266	2
2.4.1 <i>Scanner</i>	3
2.4.2 <i>Battery</i>	3
2.4.3 <i>DC Jack</i>	4
6.3 CONFIGURING BLUETOOTH DEVICE DRIVER.....	4
6.3.1 <i>Windows XP with Service Pack2</i>	4
6.3.2 <i>Widcomm Bluetooth Driver</i>	7

1. Introduction

A1010 is special cradle that it is a Bluetooth Dongle with Charger of CIPHERLAB Bluetooth Barcode Scanner 1166/1266. Cradle function show below.

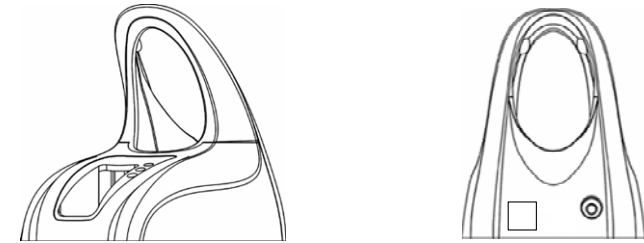
1. USB 2.0 Bluetooth Dongle
2. Charger for CIPHERLAB Bluetooth Barcode Scanner 1166/1266
3. Charger for battery pack of CIPHERLAB Bluetooth Barcode Scanner 1166/1266

2. Cradle Installation

The kit contains:

- A cradle dongle base
- A rechargeable battery
- A USB Cable
- A power supply
- Diskette containing “Scan Manager” and this manual

2.1 Power Up the Cradle Base Station



Connect the interface cable into the USB connector at the back of the base.

Power **off** your PC or Laptop when connect the cable to PC or Laptop. Once your cable is connected to the base, plug the other end into the appropriate port on your PC.

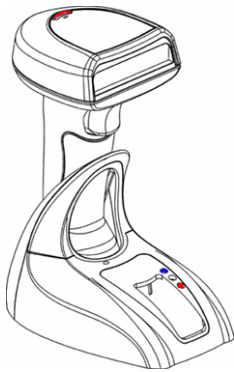
Connect the power supply provided to your AC outlet and plug the other end into the base then power **on** your PC.

Now you are ready to configure your scanner and base.

2.2 Charging CIPHERLAB Bluetooth Barcode Scanner 1166/1266

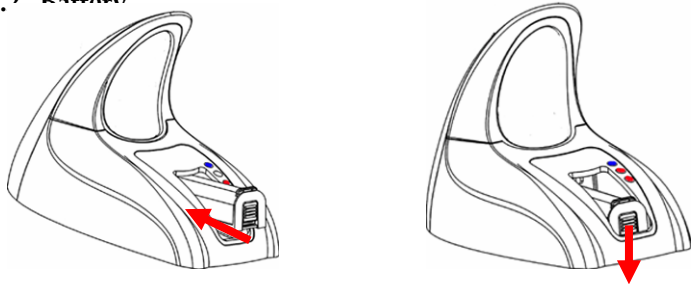
There are three methods to charge the battery. One is placing the scanner on the base and another is inserting the battery in front of the base, and the other is inserting the power supply into the DC Jack at bottom of the scanner.

2.2.1 Scanner



Place the scanner with a battery inserted on the base to charge your scanner. When charging, the scanner LED will *flash RED*. When the battery is fully charged, around 4 hours from completely empty battery, the LED stays on *solid RED*. If the battery is out of power, the LED is *off*.

2.2.2 Battery



Insert the battery in front of the base to charge your battery with the power adaptor connected. When charging, the base charging LED will be RED. When the battery is fully charged, around 4 hours from completely empty battery, the LED will be solid GREEN.

2.2.3 DC Jack




Insert the power supply to the DC Jack at bottom of the scanner. When charging, the scanner LED will flash RED. When the battery is fully charged, around 4 hours from completely empty battery, the LED stays on solid RED.

2.3 Configuring Bluetooth Device Driver

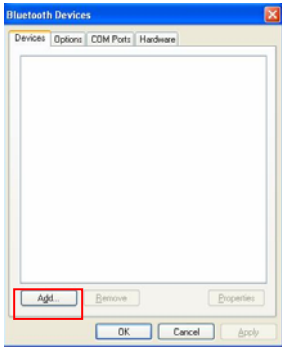
Please follow the procedures below to configure the Bluetooth driver on the host system. Please note that, when searching nearby Bluetooth devices on Host computers, the 1x66 scanner will come out with the serial number as their device name. Please check the serial number label on the scanner when making connections.

2.3.1 Windows XP with Service Pack2

1. Insert the Bluetooth dongle into PC host.
2. Double click the Bluetooth icon  on the lower right of the taskbar.

3. Click **Add** button.





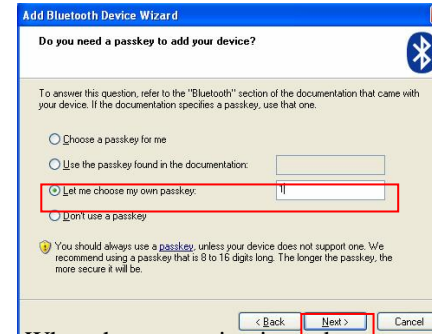
1. Check **My device is set up and ready to be found** and click **Next** button.



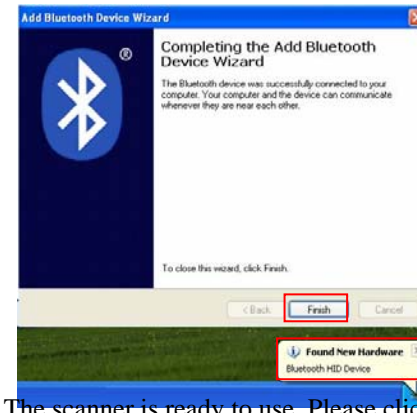
2. Select the 1x66 scanner and click **Next** button.



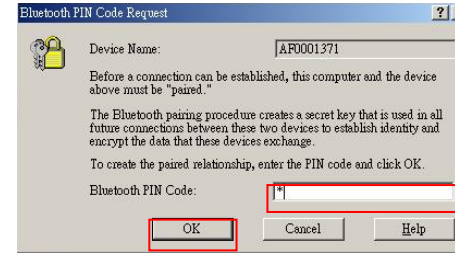
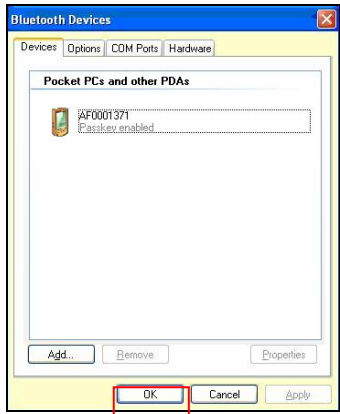
3. Select **Let me choose my own passkey** and input the passkey in the text field and click **Next** button.



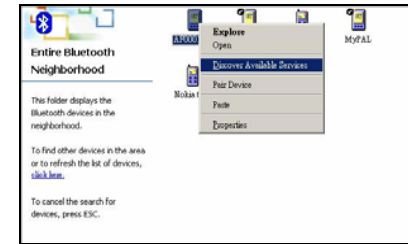
4. When the connection is ready, a message will be displayed : **Found New Hardware Bluetooth HID Device**. Please click **Finish** button to complete the connection.



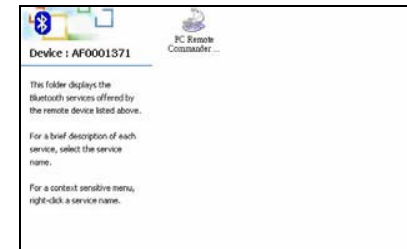
8. The scanner is ready to use. Please click **OK** button.



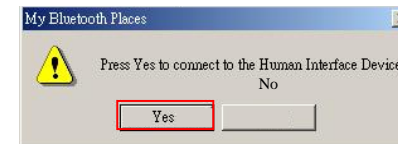
- Right click 1x66 scanner and select *Discover Available Services*.



- Click *PC Remote Commander* icon.



- Click **Yes** Button.



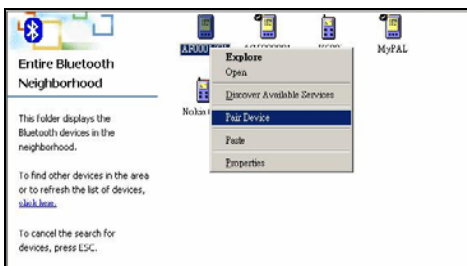
2.3.2 Widcomm Bluetooth Driver



- Click icon at PC.
- Click *Find Bluetooth Devices* icon at *My Bluetooth Places*.



- Right click the 1x66 scanner and select *Pair Device*.



- Input PIN code and click **OK** button.

8. When the green arrow icon is displayed, the connection is ready.

