

# Mobile Station OTA Radiated Power

Information	
Date	2009/9/10
Start Time	下午 03:29
Finish Time	下午 03:39
Operator	Jason
Project Numb	cipher
Manufacturer	hermes0910
Model Name	PCS
Serial Numbe	
FCC ID Numl	7654321
Hardware Ver	1.1.6
Software Vers	2.3.3
Test Condition	
Tempurature	24.6
Humidity	53
Note	.

---

## Test List

PCS Ch. 512

PCS Ch. 661

PCS Ch. 810

---

PCS Ch.  
512

TRP		
Total Rad. Pow.	23.52	dBm
Ant. Port Inp. Pow	30	dBm
Peak EIRP	27.92	dBm
Directivity	4.4	dBi
Efficiency	-6.48	dB
Efficiency	22.49	%
Gain	-2.08	dBi
NHPRP +/-30	17.42	dBm
NHPRP +/-45	19.04	dBm

Maximum H Valu	27.24	dBm
Maximum H @ T	60	deg.
Maximum H @ P	300	deg.
Minimum H Valu	-3.71	dBm
Minimum H @ T	90	deg.
Minimum H @ P	0	deg.
Maximum V Valu	27.88	dBm
Maximum V @ T	120	deg.
Maximum V @ P	0	deg.
Minimum V Valu	-4.45	dBm
Minimum V @ T	60	deg.
Minimum V @ P	30	deg.
Maximum H+V V	27.92	dBm
Maximum H+V @	150	deg.
Maximum H+V @	0	deg.
Minimum H+V V	14.08	dBm
Minimum H+V @	120	deg.
Minimum H+V @	60	deg.

Test Data

**Horizontal**

	0	30	60	90	120	150	180	210	240	270	300	330
30	7.37	18.34	21.23	21.97	22.13	21.17	16.79	6.14	17.43	20.31	19.63	13.81
60	15.32	17.42	19.22	15.58	13.32	16.32	14.92	18.81	24.33	26.6	27.24	25.38
90	-3.71	6.31	1.68	7.84	11.6	4.86	14.02	17.2	12.16	7.17	11.84	9.61
120	-2.54	6.3	1.65	7.92	11.96	4.68	14.2	17.34	12.54	7.57	12.08	9.58
150	21.05	22.91	23.21	22.16	22.29	23.66	23.69	21.9	20.69	21.18	20.93	20.01

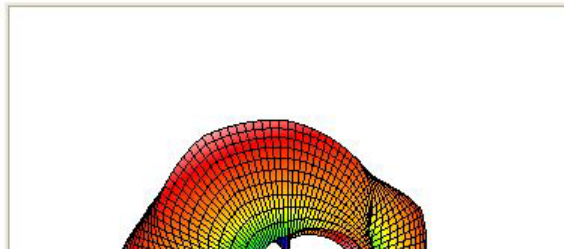
**Vertical**

	0	30	60	90	120	150	180	210	240	270	300	330
30	18.86	17.28	13.01	8.29	14.15	21.03	24.54	24.52	21.21	11.4	10.99	18.02
60	17.59	-4.45	13.9	12.74	10.95	7.01	7.29	17.42	18.86	14.5	10.13	17.57
90	27.77	24.58	14.16	16.29	20.27	21.83	23.97	25.39	23.59	15.61	17.84	25.96
120	27.88	23.97	13.83	16.39	20.42	21.96	24.14	25.51	23.71	15.84	18.72	25.96
150	26.92	25.29	19.25	11.01	17.62	22.65	25.36	25.49	22.53	11.72	17.7	25.06

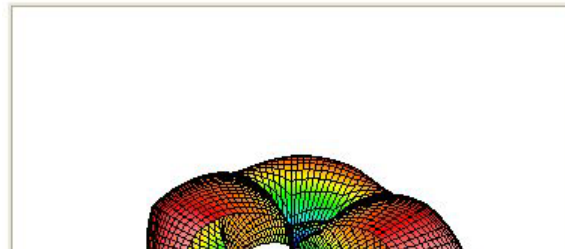
**Horizontal +  
Vertical**

	0	30	60	90	120	150	180	210	240	270	300	330
30	19.16	20.86	21.84	22.15	22.77	24.11	25.22	24.58	22.73	20.84	20.18	19.42
60	19.61	17.45	20.34	17.4	15.31	16.8	15.61	21.18	25.42	26.86	27.33	26.04
90	27.78	24.65	14.4	16.87	20.82	21.91	24.39	26	23.89	16.19	18.81	26.06
120	27.88	24.05	14.08	16.97	21	22.04	24.56	26.13	24.03	16.44	19.57	26.06
150	27.92	27.27	24.67	22.48	23.57	26.2	27.62	27.07	24.72	21.64	22.62	26.24

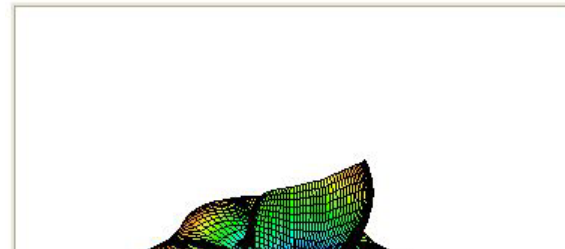
PCS Ch. 512Up  
View  
3D Graph Excel

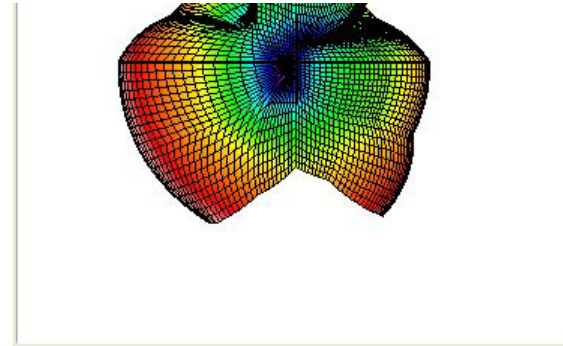
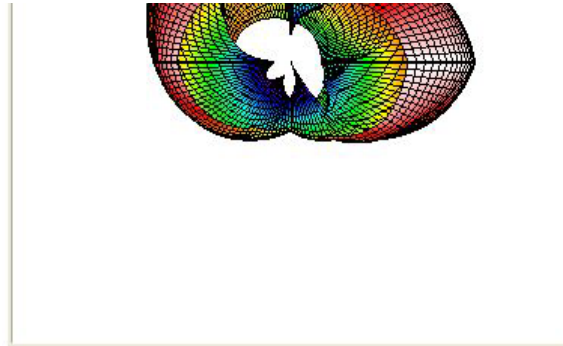
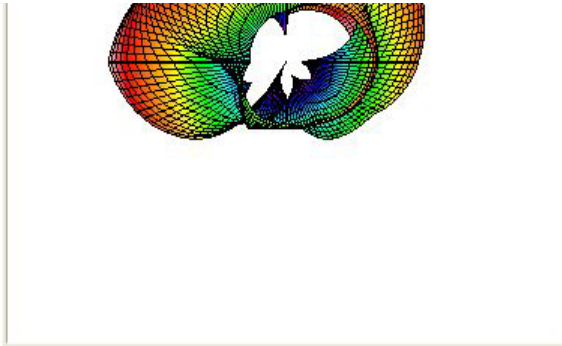


PCS Ch.  
512Down View  
3D Graph Excel

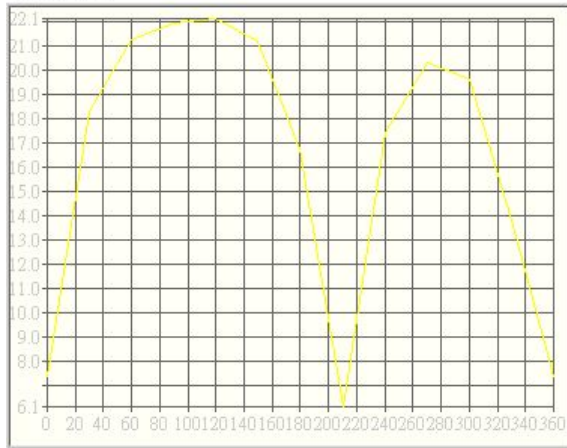


PCS Ch.  
512Front View  
3D Graph Excel

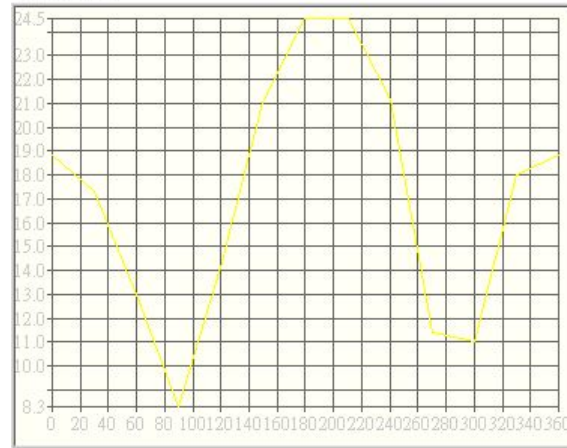




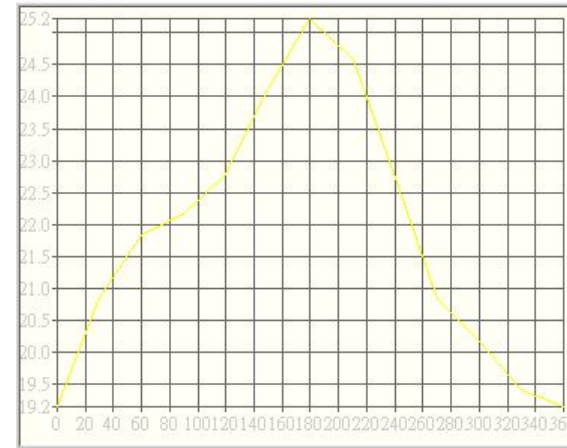
PCS Ch.  
512@Theta 30.0  
Horizontal  
Excel XY Plot



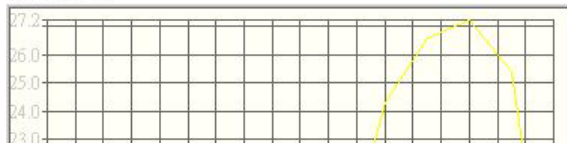
PCS Ch.  
512@Theta 30.0  
Vertical  
Excel XY Plot



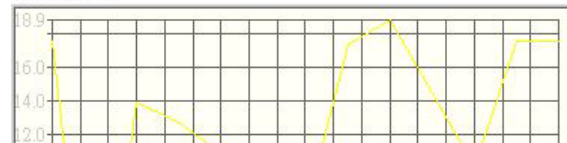
PCS Ch.  
512@Theta 30.0  
Total  
Excel XY Plot



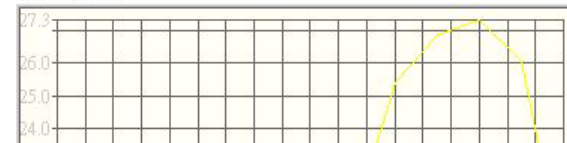
PCS Ch.  
512@Theta 60.0  
Horizontal  
Excel XY Plot



PCS Ch.  
512@Theta 60.0  
Vertical  
Excel XY Plot



PCS Ch.  
512@Theta 60.0  
Total  
Excel XY Plot





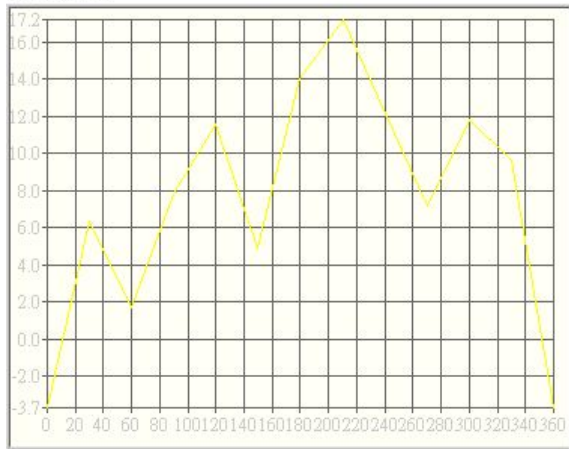
PCS Ch.  
512@Theta 90.0  
Horizontal  
Excel XY Plot



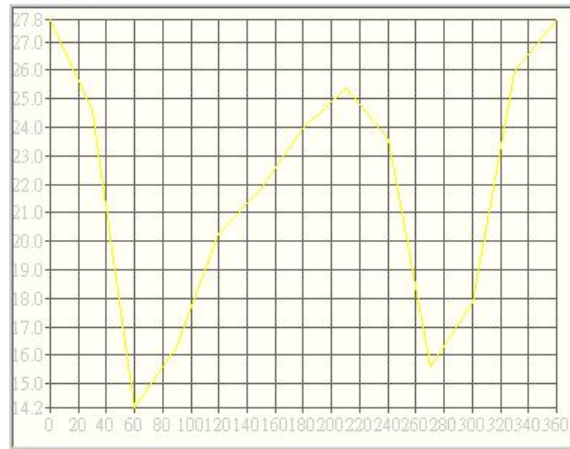
PCS Ch.  
512@Theta 90.0  
Vertical  
Excel XY Plot



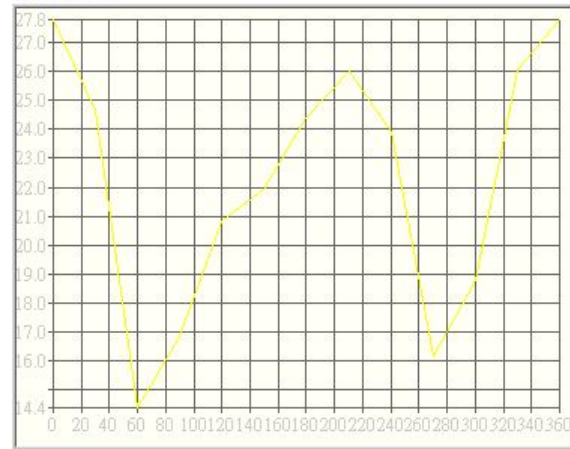
PCS Ch.  
512@Theta 90.0  
Total  
Excel XY Plot



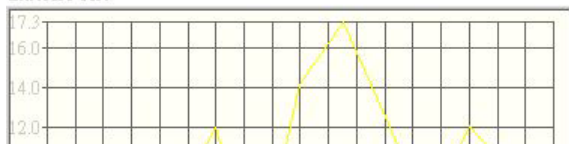
PCS Ch.  
512@Theta  
120.0  
Horizontal  
Excel XY Plot

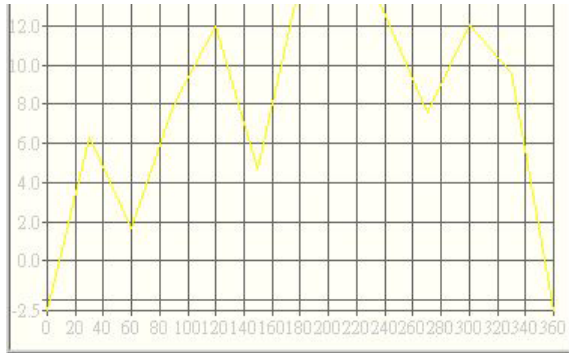


PCS Ch.  
512@Theta  
120.0  
Vertical  
Excel XY Plot

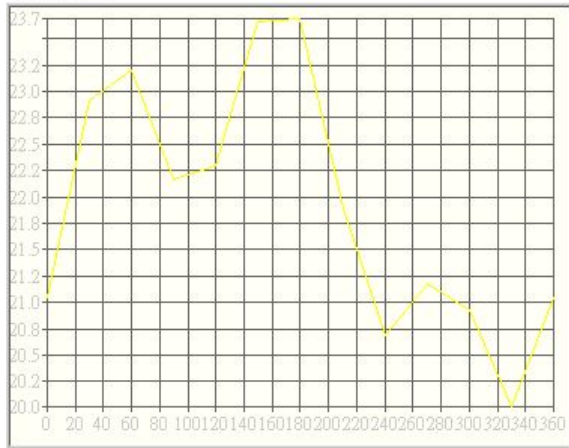


PCS Ch.  
512@Theta  
120.0  
Total  
Excel XY Plot

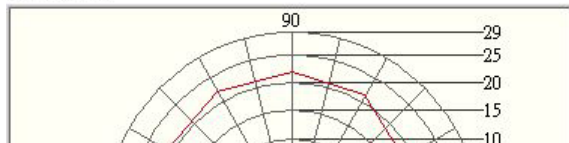




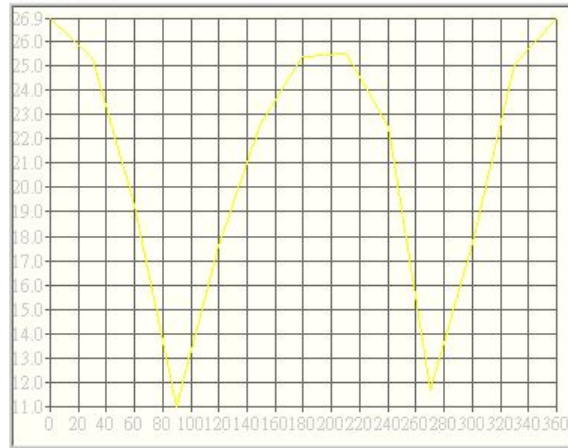
PCS Ch.  
512@Theta  
150.0  
Horizontal  
Excel XY Plot



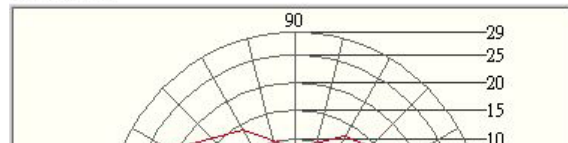
PCS Ch.  
512@Theta 30.0  
Horizontal  
Excel XY Plot



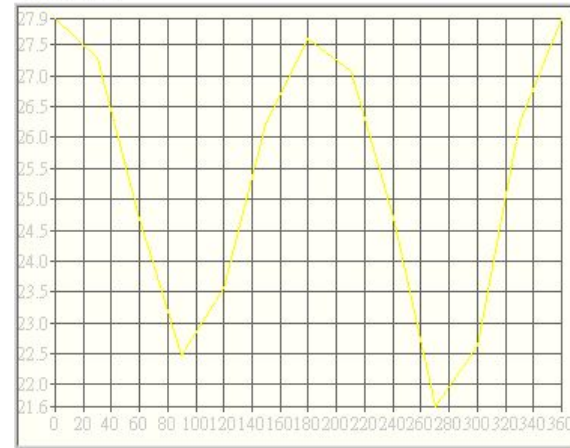
PCS Ch.  
512@Theta  
150.0  
Vertical  
Excel XY Plot



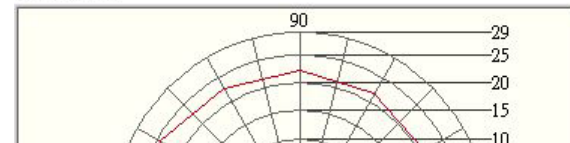
PCS Ch.  
512@Theta 30.0  
Vertical  
Excel XY Plot

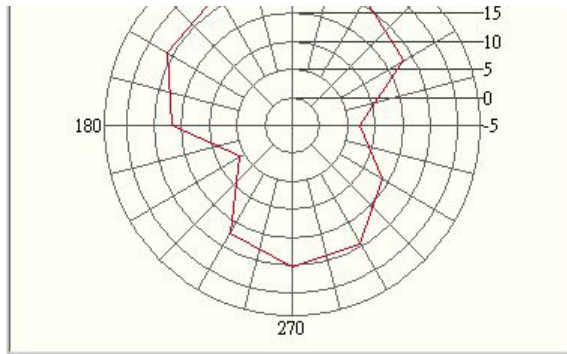


PCS Ch.  
512@Theta  
150.0  
Total  
Excel XY Plot

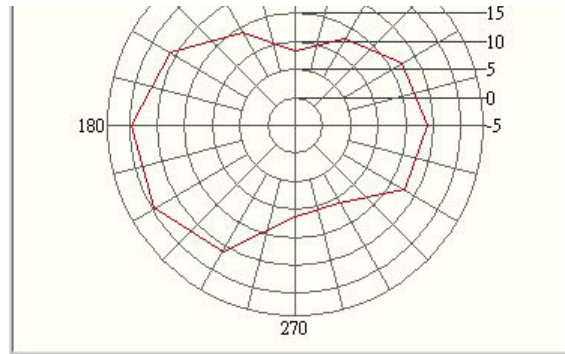


PCS Ch.  
512@Theta 30.0  
Total  
Excel XY Plot

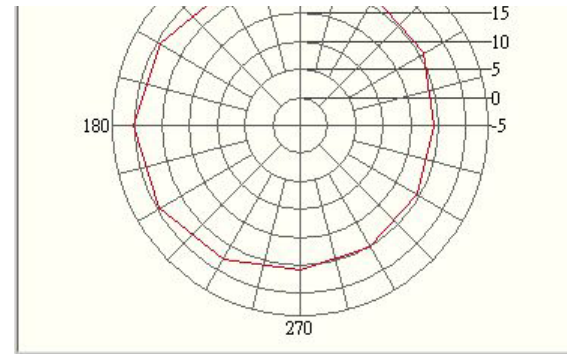




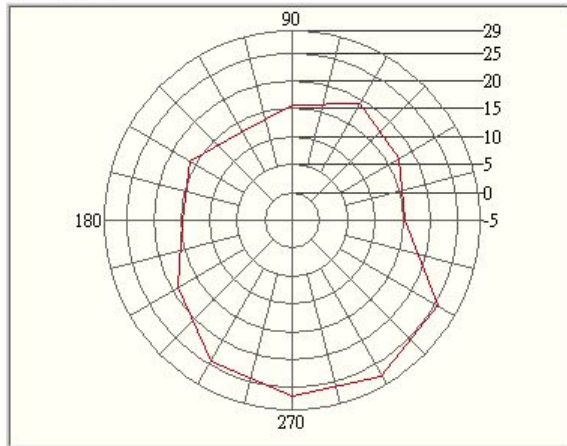
PCS Ch.  
512@Theta 60.0  
Horizontal  
Excel XY Plot



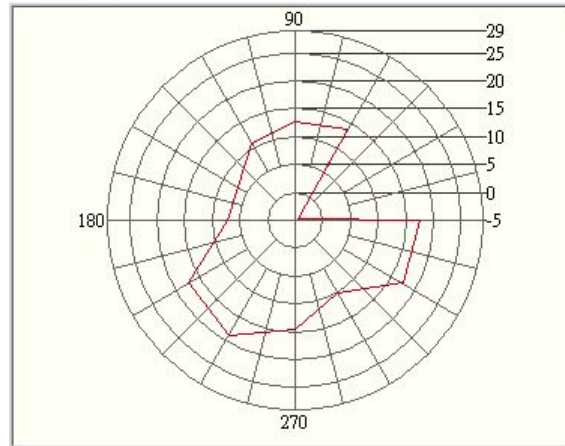
PCS Ch.  
512@Theta 60.0  
Vertical  
Excel XY Plot



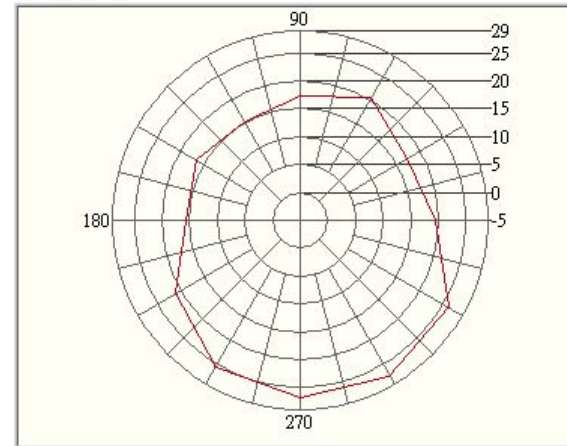
PCS Ch.  
512@Theta 60.0  
Total  
Excel XY Plot



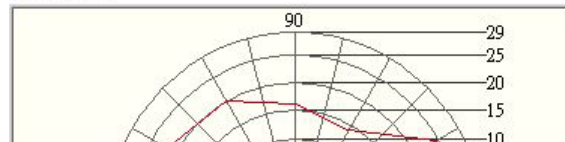
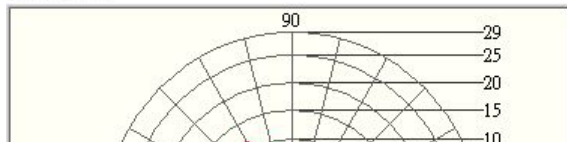
PCS Ch.  
512@Theta 90.0  
Horizontal  
Excel XY Plot

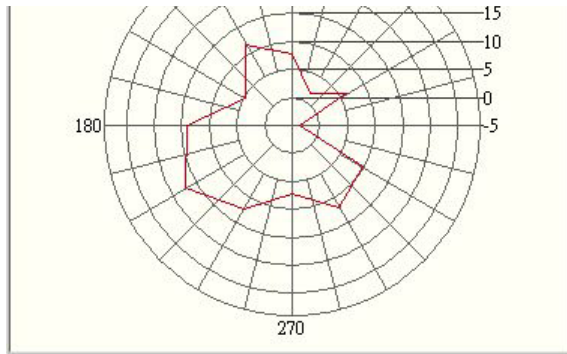


PCS Ch.  
512@Theta 90.0  
Vertical  
Excel XY Plot

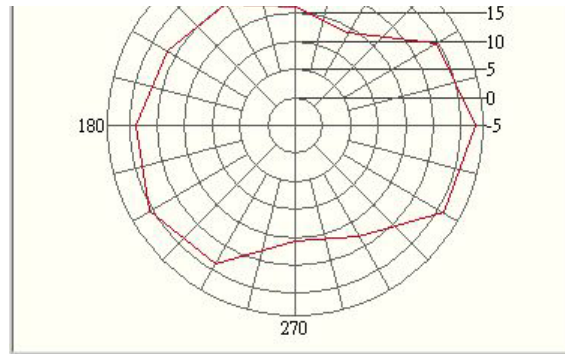


PCS Ch.  
512@Theta 90.0  
Total  
Excel XY Plot

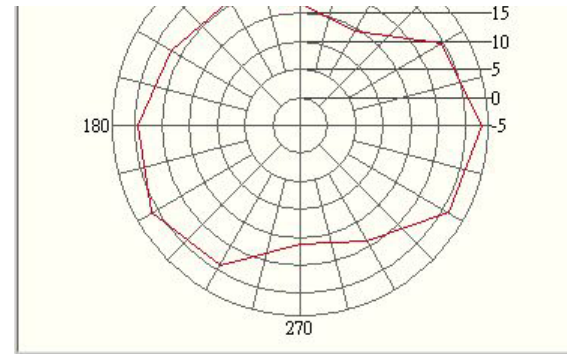




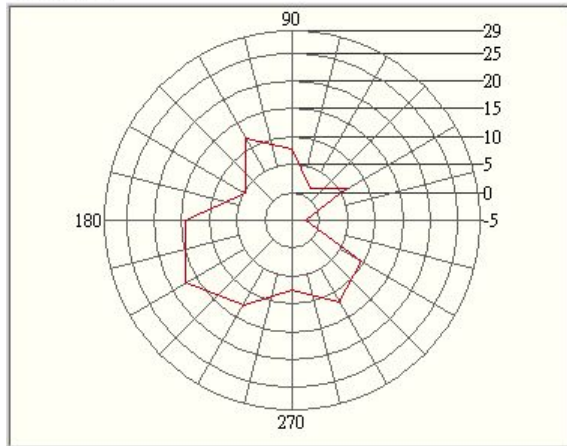
PCS Ch.  
512@Theta  
120.0  
Worksheet1  
Excel XY Plot



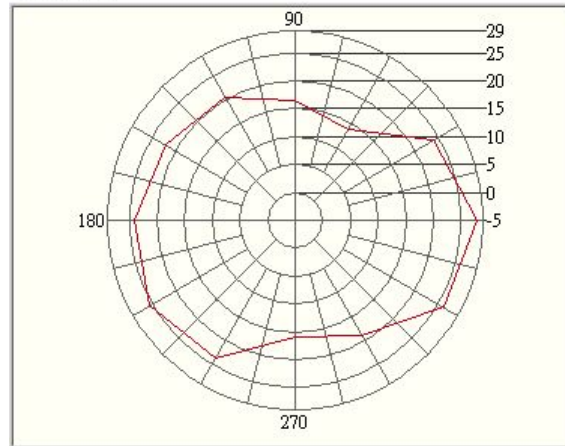
PCS Ch.  
512@Theta  
120.0  
Worksheet1  
Excel XY Plot



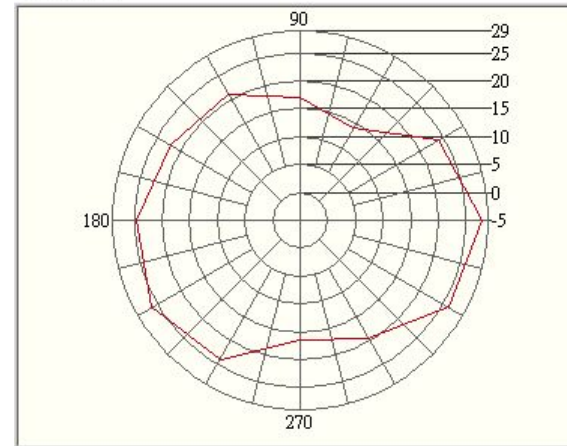
PCS Ch.  
512@Theta  
120.0  
Worksheet1  
Excel XY Plot



PCS Ch.  
512@Theta  
150.0  
Worksheet1  
Excel XY Plot



PCS Ch.  
512@Theta  
150.0  
Worksheet1  
Excel XY Plot



PCS Ch.  
512@Theta  
150.0  
Worksheet1  
Excel XY Plot

