

Mobile Station OTA Radiated Power

Information	
Date	2009/9/10
Start Time	下午 03:52
Finish Time	下午 04:03
Operator	Jason
Project Number	cipher
Manufacturer	hermes0910
Model Name	GSM
Serial Number	
FCC ID Number	7654321
Hardware Version	1.1.6
Software Version	2.3.3
Test Condition	
Temperature	24.6
Humidity	53
Note	.

Test List

GSM Ch. 128
GSM Ch. 190
GSM Ch. 251

GSM Ch.
128

TRP		
Total Rad. Pow.	25.23	dBm
Ant. Port Inp. Pow	33	dBm
Peak EIRP	28.99	dBm
Directivity	3.76	dBi
Efficiency	-7.77	dB
Efficiency	16.71	%
Gain	-4.01	dBi
NHPRP +/-30	20.52	dBm
NHPRP +/-45	21.53	dBm

Maximum H Valu	28.82	dBm
Maximum H @ T	120	deg.
Maximum H @ P	270	deg.
Minimum H Valu	8.36	dBm
Minimum H @ T	30	deg.
Minimum H @ P	180	deg.
Maximum V Valu	23.15	dBm
Maximum V @ T	150	deg.
Maximum V @ P	0	deg.
Minimum V Valu	-8.34	dBm
Minimum V @ T	150	deg.
Minimum V @ P	270	deg.
Maximum H+V V	28.99	dBm
Maximum H+V @	120	deg.
Maximum H+V @	330	deg.
Minimum H+V V	17.41	dBm
Minimum H+V @	60	deg.
Minimum H+V @	330	deg.

Test Data

Horizontal

	0	30	60	90	120	150	180	210	240	270	300	330
30	10	17.97	21.11	21.52	19.87	15.95	8.36	14.43	18.3	18.79	16.61	8.8
60	10.05	18.29	23.25	21.46	20	15.88	8.37	14.43	18.29	18.74	16.42	8.92
90	26.85	24.23	20.01	17.71	19.5	23.1	26.06	27.8	28.56	28.82	28.77	28.29
120	26.79	23.79	19.72	17.82	19.65	23.34	26.11	27.81	28.57	28.82	28.76	28.29
150	23.02	25.61	27.74	28.39	27.9	26.36	23.8	21.17	20.62	21.19	21.15	21.04

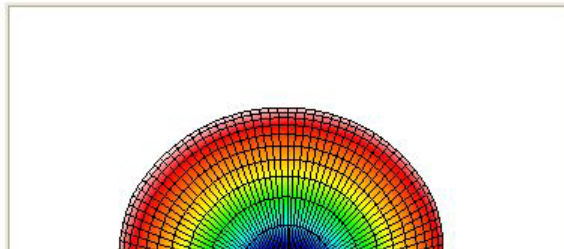
Vertical

	0	30	60	90	120	150	180	210	240	270	300	330
30	17.74	16.78	18.35	13.02	15.96	17.8	17.96	15.4	7.46	3.66	13.37	16.77
60	18.15	16.98	13.6	13.08	15.92	17.87	17.97	15.42	7.59	3.24	13.62	16.75
90	22.57	21.4	15.85	8.37	16.42	20.02	21.03	19.49	14.3	-4.44	15.53	20.72
120	22.58	21.03	15.3	8.76	16.47	20.11	20.98	19.47	14.04	-2.99	16.05	20.72
150	23.15	22.74	18.74	5.94	13.86	19.69	21.37	20.35	15.71	-8.34	15.24	20.93

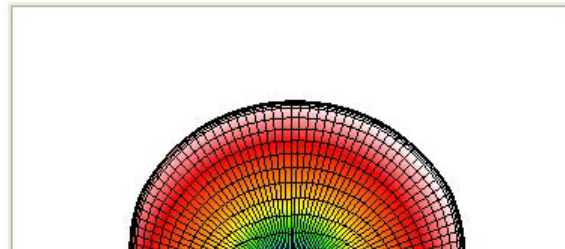
**Horizontal +
Vertical**

	0	30	60	90	120	150	180	210	240	270	300	330
30	18.41	20.42	22.96	22.09	21.35	19.99	18.41	17.95	18.64	18.92	18.29	17.42
60	18.77	20.69	23.7	22.05	21.43	20	18.42	17.96	18.64	18.87	18.25	17.41
90	28.23	26.05	21.42	18.19	21.24	24.83	27.25	28.4	28.72	28.82	28.97	28.99
120	28.18	25.64	21.06	18.33	21.36	25.03	27.27	28.4	28.73	28.82	28.98	28.99
150	26.09	27.42	28.26	28.42	28.07	27.21	25.76	23.79	21.84	21.2	22.14	23.99

GSM Ch. 128Up
View
3D Graph Excel

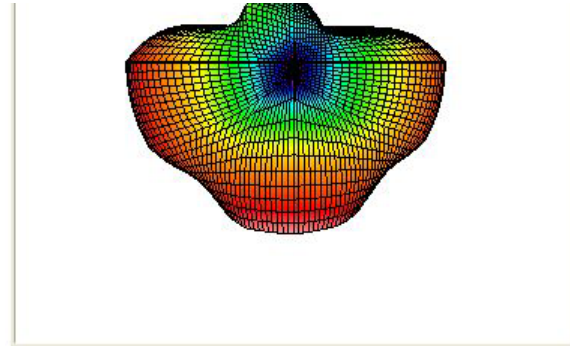
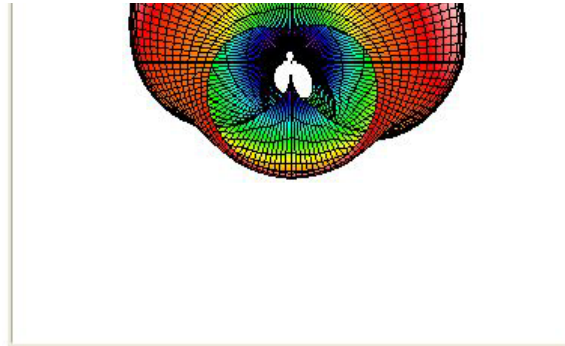
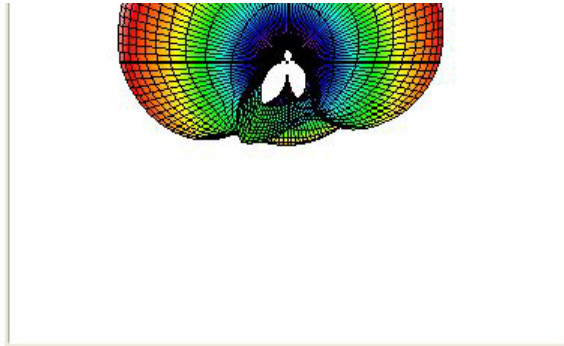


GSM Ch.
128Down View
3D Graph Excel

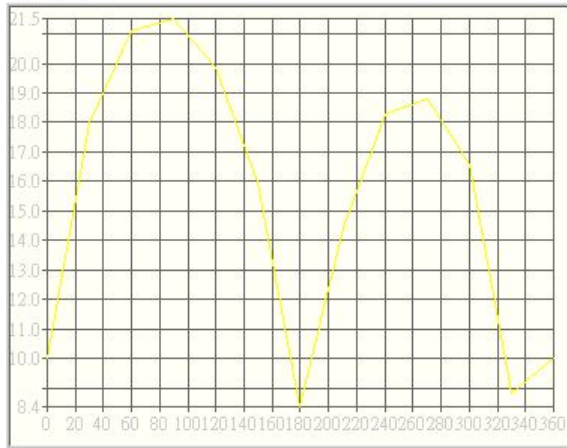


GSM Ch.
128Front View
3D Graph Excel

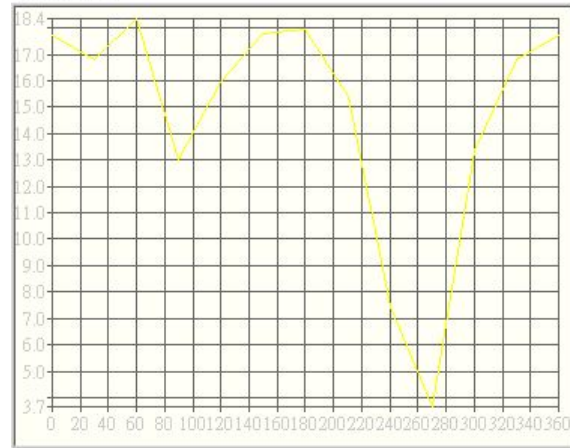




GSM Ch.
128@Theta 30.0
Horizontal
Excel XY Plot



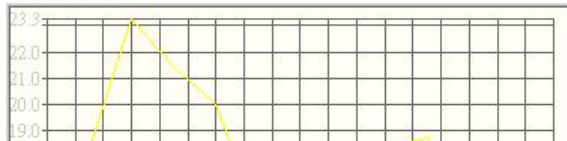
GSM Ch.
128@Theta 30.0
Vertical
Excel XY Plot



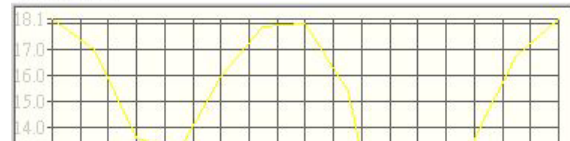
GSM Ch.
128@Theta 30.0
Total
Excel XY Plot



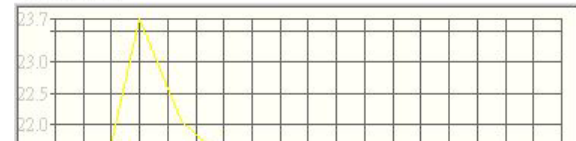
GSM Ch.
128@Theta 60.0
Horizontal
Excel XY Plot



GSM Ch.
128@Theta 60.0
Vertical
Excel XY Plot

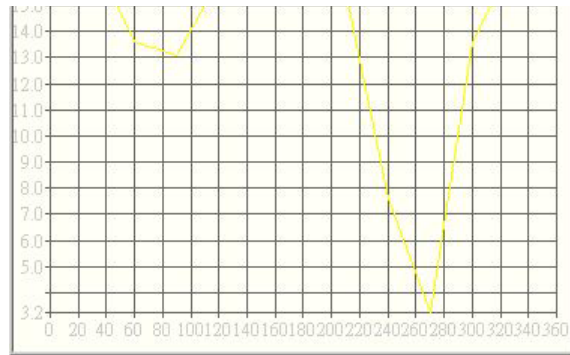


GSM Ch.
128@Theta 60.0
Total
Excel XY Plot





GSM Ch.
128@Theta 90.0
Horizontal
Excel XY Plot



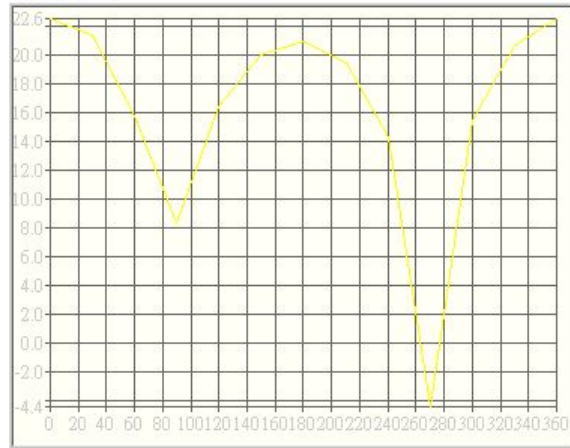
GSM Ch.
128@Theta 90.0
Vertical
Excel XY Plot



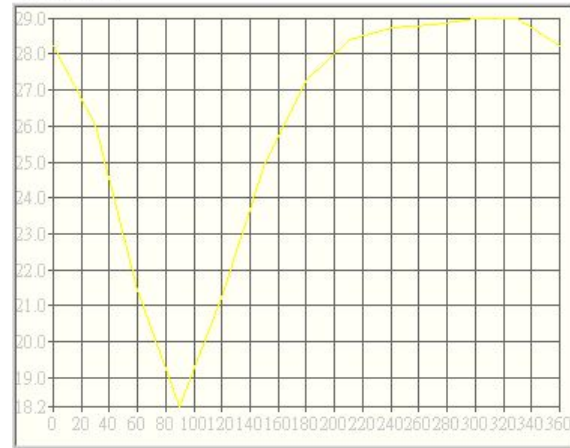
GSM Ch.
128@Theta 90.0
Total
Excel XY Plot



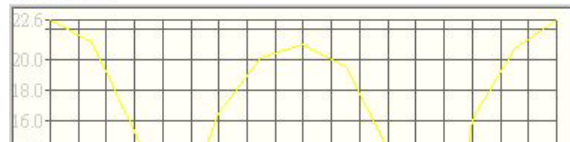
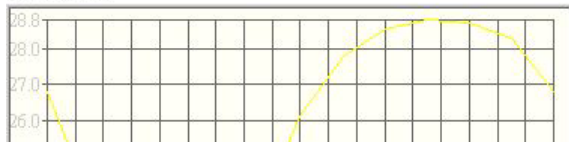
GSM Ch.
128@Theta
120.0
Horizontal
Excel XY Plot



GSM Ch.
128@Theta
120.0
Vertical
Excel XY Plot

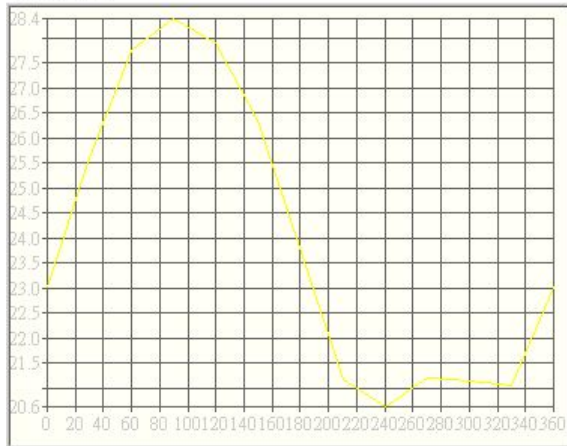


GSM Ch.
128@Theta
120.0
Total
Excel XY Plot

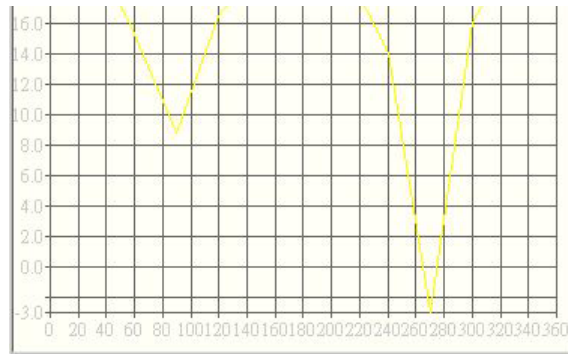
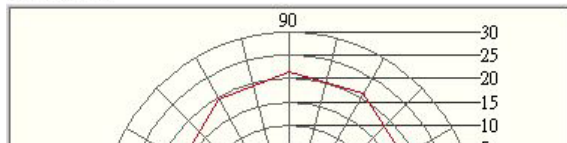




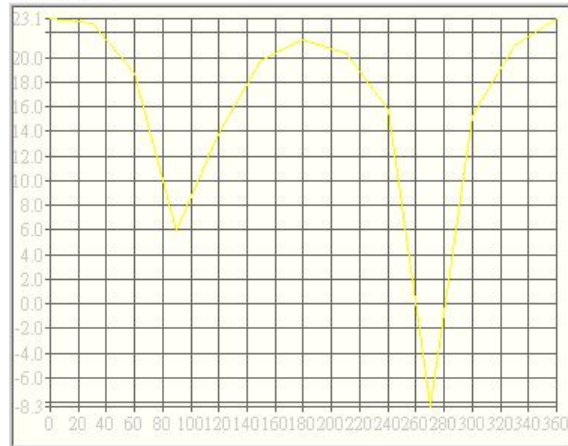
GSM Ch.
128@Theta
150.0
Horizontal
Excel XY Plot



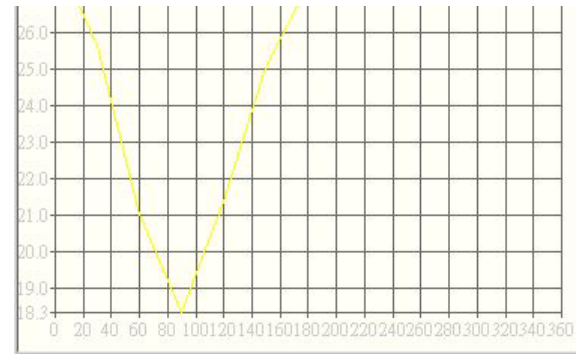
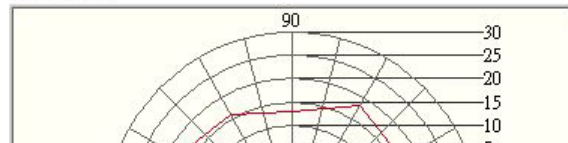
GSM Ch.
128@Theta 30.0
Horizontal
Excel XY Plot



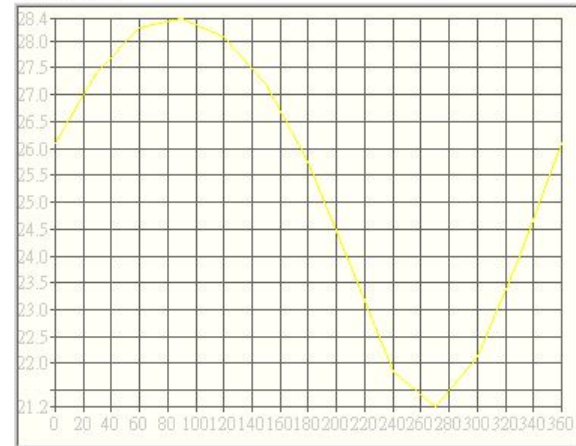
GSM Ch.
128@Theta
150.0
Vertical
Excel XY Plot



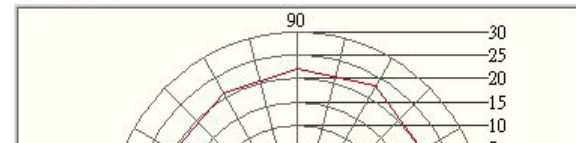
GSM Ch.
128@Theta 30.0
Vertical
Excel XY Plot

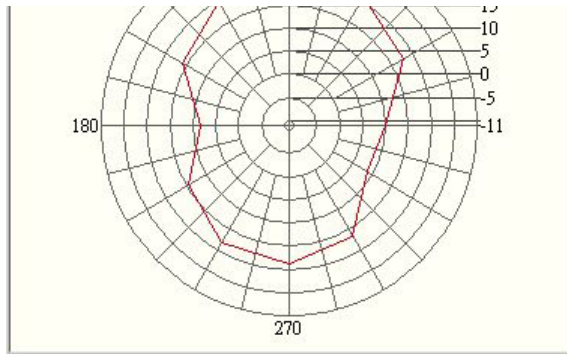


GSM Ch.
128@Theta
150.0
Total
Excel XY Plot

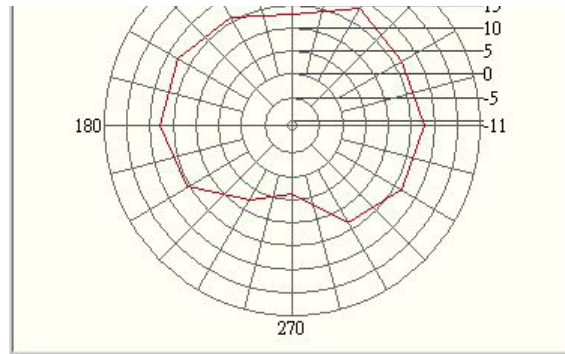


GSM Ch.
128@Theta 30.0
Total
Excel XY Plot

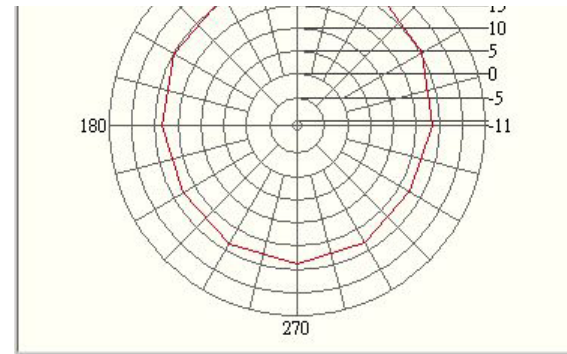




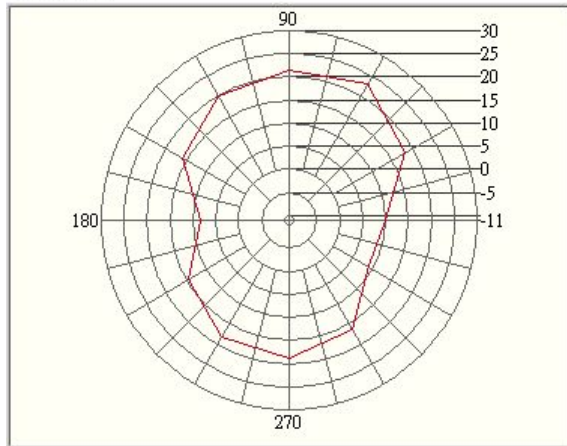
GSM Ch.
128@Theta 60.0
Horizontal
Excel XY Plot



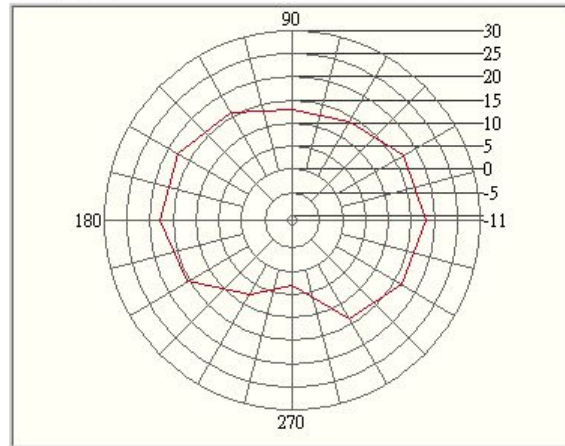
GSM Ch.
128@Theta 60.0
Vertical
Excel XY Plot



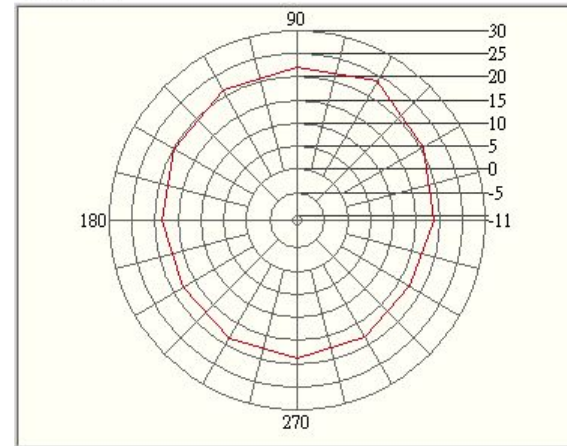
GSM Ch.
128@Theta 60.0
Total
Excel XY Plot



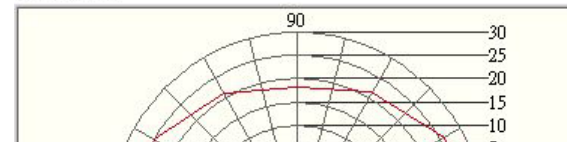
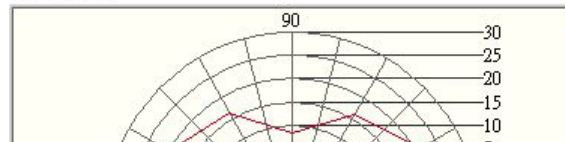
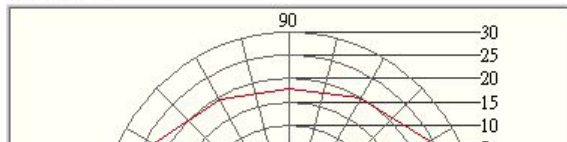
GSM Ch.
128@Theta 90.0
Horizontal
Excel XY Plot

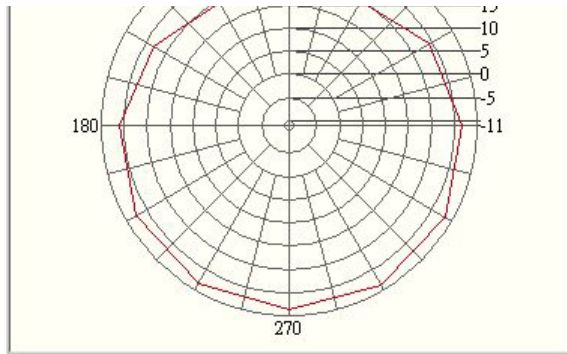


GSM Ch.
128@Theta 90.0
Vertical
Excel XY Plot

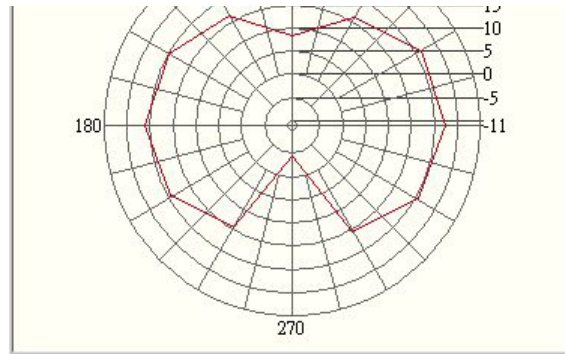


GSM Ch.
128@Theta 90.0
Total
Excel XY Plot

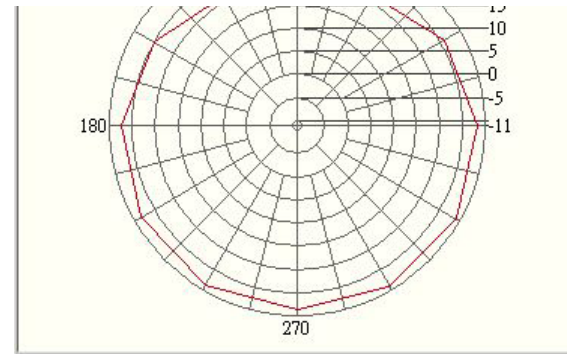




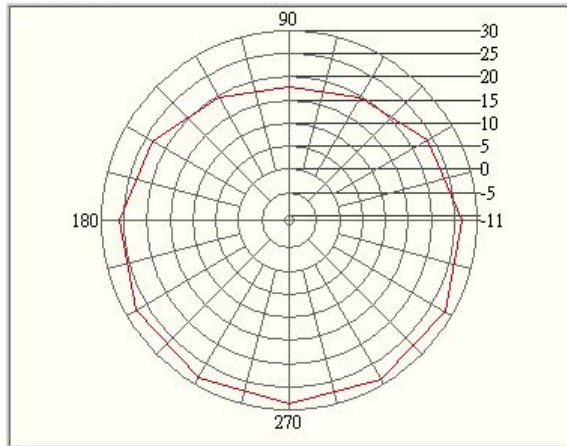
GSM Ch.
128@Theta
120.0
Excel XY Plot



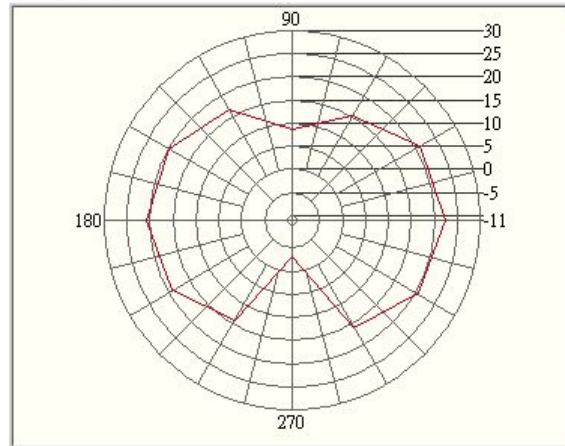
GSM Ch.
128@Theta
120.0
Excel XY Plot



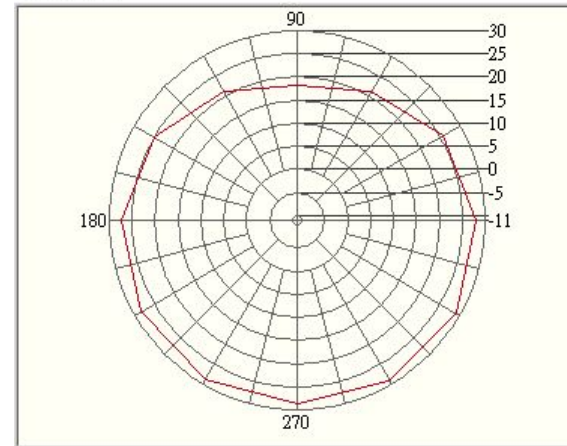
GSM Ch.
128@Theta
120.0
Excel XY Plot



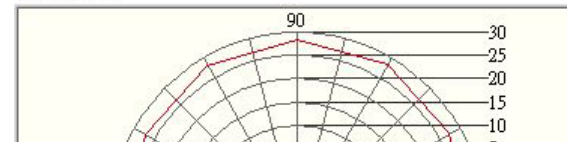
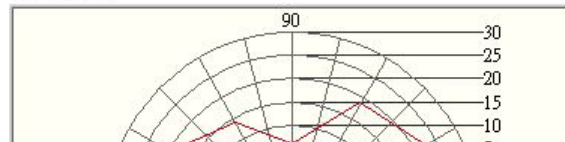
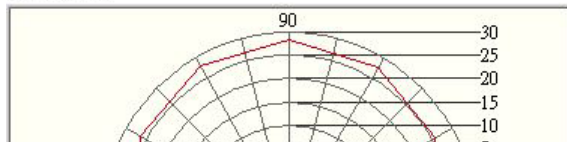
GSM Ch.
128@Theta
150.0
Excel XY Plot

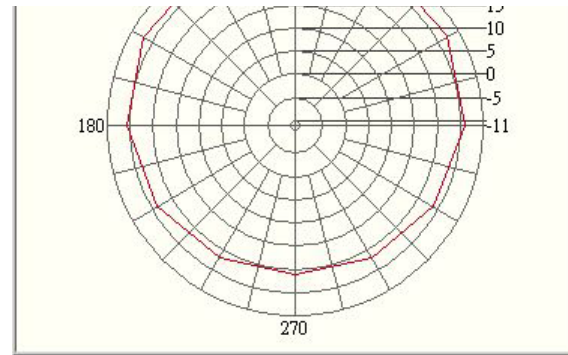
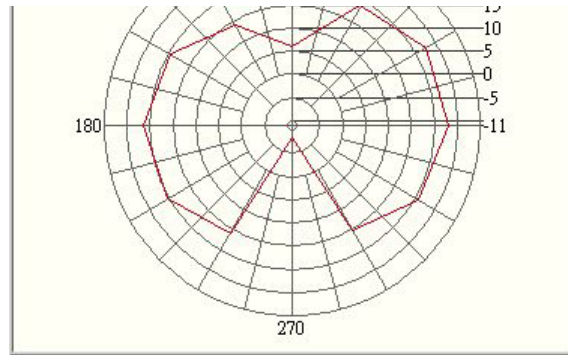
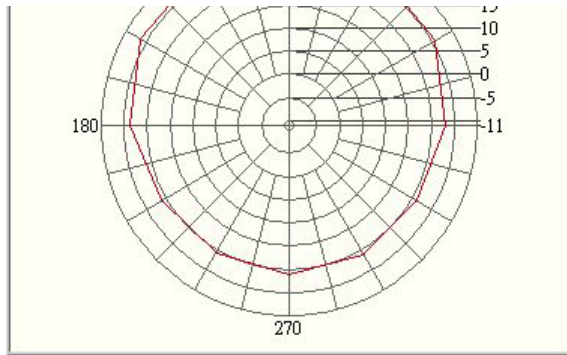


GSM Ch.
128@Theta
150.0
Excel XY Plot



GSM Ch.
128@Theta
150.0
Excel XY Plot





GSM Ch.
190

TRP		
Total Rad. Pow.	25.51	dBm
Ant. Port Inp. Pow	33	dBm
Peak EIRP	29.04	dBm
Directivity	3.53	dBi
Efficiency	-7.49	dB
Efficiency	17.82	%
Gain	-3.96	dBi
NHPRP +/-30	20.68	dBm
NHPRP +/-45	21.74	dBm

Maximum H Valu	28.93	dBm
Maximum H @ T	90	deg.
Maximum H @ P	270	deg.
Minimum H Valu	8.34	dBm
Minimum H @ T	30	deg.
Minimum H @ P	330	deg.
Maximum V Valu	23.62	dBm
Maximum V @ T	150	deg.
Maximum V @ P	0	deg.
Minimum V Valu	-4.7	dBm
Minimum V @ T	120	deg.
Minimum V @ P	270	deg.
Maximum H+V V	29.04	dBm
Maximum H+V @	120	deg.
Maximum H+V @	240	deg.
Minimum H+V V	17.66	dBm
Minimum H+V @	90	deg.
Minimum H+V @	90	deg.

Test Data

Horizontal

	0	30	60	90	120	150	180	210	240	270	300	330
30	12.66	19.36	22.25	22.31	20.48	16.39	9.81	15.8	19.31	19.78	17.43	8.34
60	12.72	19.87	23.47	22.33	20.67	16.29	9.71	15.74	19.37	19.76	17.11	8.47
90	26.31	23.24	18.76	16.76	19.1	23.12	26.25	28.07	28.76	28.93	28.73	28.03
120	26.23	24.01	18.55	16.85	19.34	23.35	26.41	28.09	28.81	28.92	28.7	28.02
150	22.88	25.57	27.84	28.57	28.13	26.58	24.1	21.98	21.86	22.34	21.93	21.29

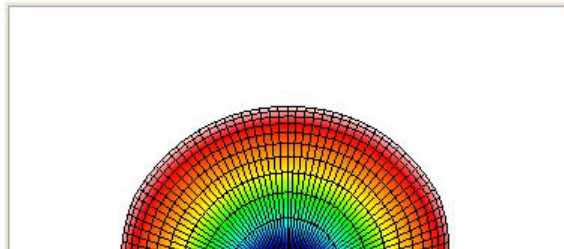
Vertical

	0	30	60	90	120	150	180	210	240	270	300	330
30	20.25	16.71	18.27	14.65	16.68	18.61	18.79	16.45	8.71	6.91	15.76	19.1
60	20.47	19.36	16.29	14.67	16.66	18.64	18.8	16.41	8.8	6.78	15.92	19.02
90	23.46	22.35	17.13	10.38	17.31	21.06	22.16	20.91	16.37	-3.68	15.76	21.42
120	23.47	21.8	16.61	10.55	17.41	21.17	22.23	20.95	16.19	-4.7	16.34	21.41
150	23.62	23.16	19.08	4.74	15.15	20.84	22.49	21.56	17.36	1.02	14.93	21.24

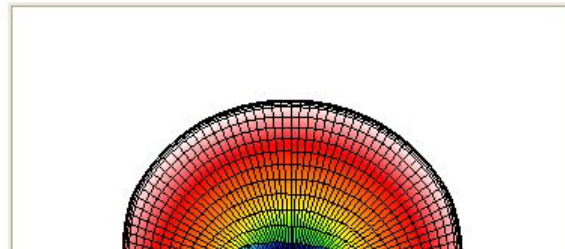
**Horizontal +
Vertical**

	0	30	60	90	120	150	180	210	240	270	300	330
30	20.94	21.25	23.71	23	22	20.65	19.31	19.15	19.67	20	19.69	19.45
60	21.15	22.64	24.23	23.02	22.12	20.63	19.31	19.1	19.73	19.98	19.57	19.39
90	28.13	25.83	21.03	17.66	21.31	25.22	27.68	28.84	29	28.93	28.94	28.89
120	28.08	26.05	20.7	17.76	21.49	25.4	27.81	28.86	29.04	28.92	28.95	28.88
150	26.28	27.54	28.39	28.59	28.35	27.61	26.38	24.79	23.18	22.38	22.72	24.27

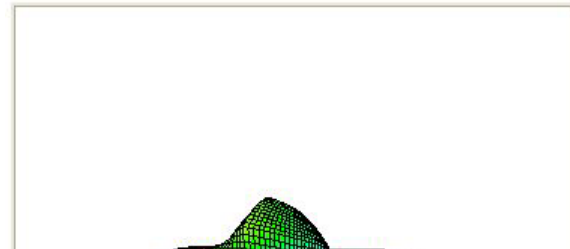
GSM Ch. 190Up
View
3D Graph Excel

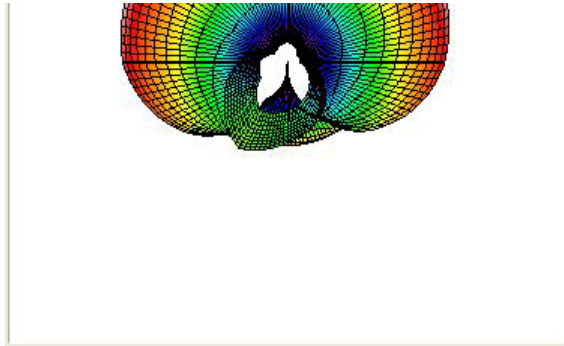


GSM Ch. 190Down
View
3D Graph Excel

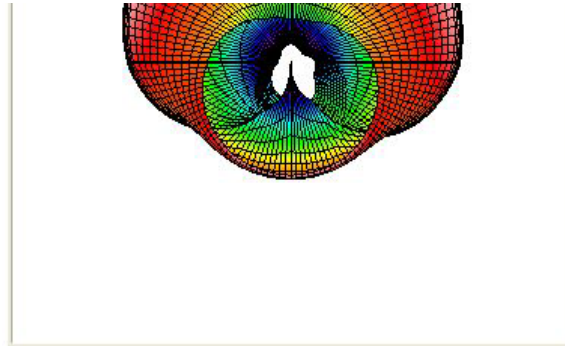
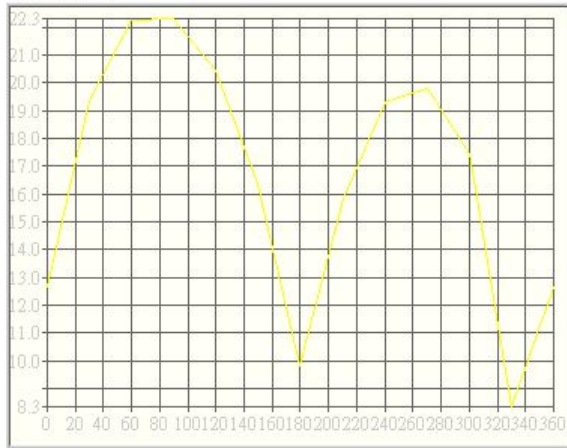


GSM Ch. 190Front
View
3D Graph Excel

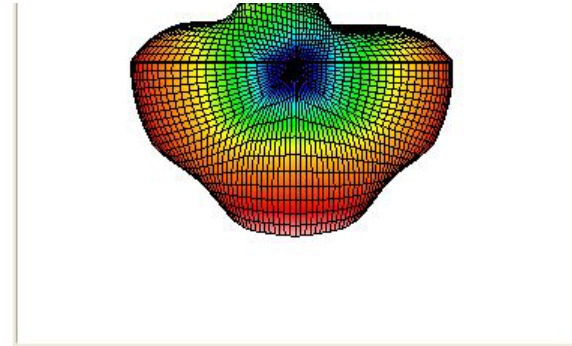
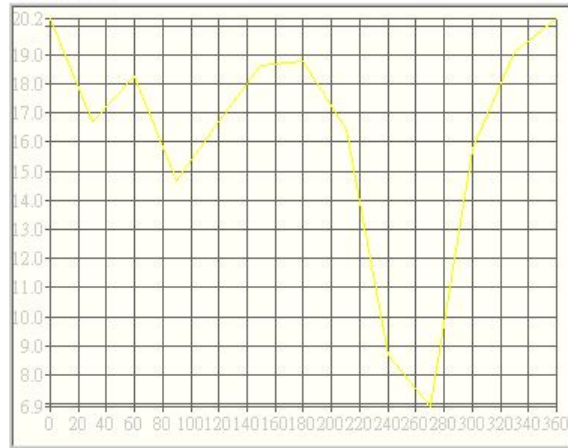




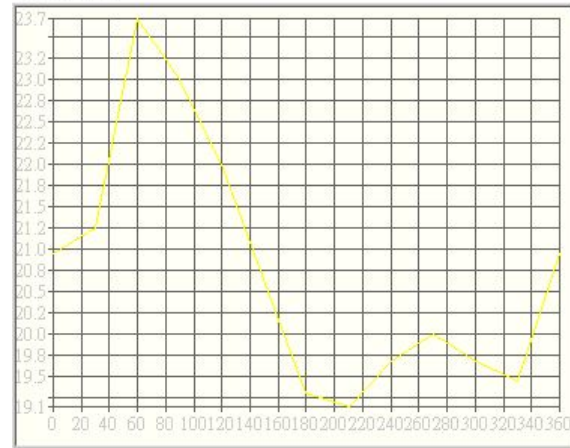
GSM Ch.
190@Theta 30.0
Horizontal
Excel XY Plot



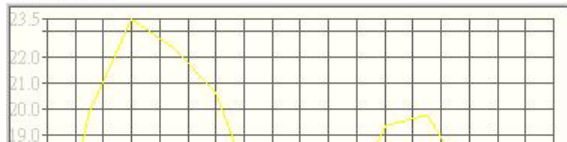
GSM Ch.
190@Theta 30.0
Vertical
Excel XY Plot



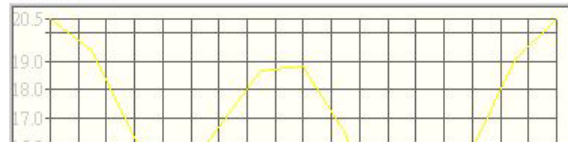
GSM Ch.
190@Theta 30.0
Total
Excel XY Plot



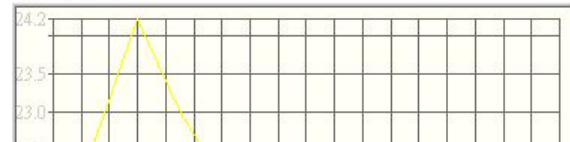
GSM Ch.
190@Theta 60.0
Horizontal
Excel XY Plot



GSM Ch.
190@Theta 60.0
Vertical
Excel XY Plot



GSM Ch.
190@Theta 60.0
Total
Excel XY Plot





GSM Ch.
190@Theta 90.0
Horizontal
Excel XY Plot



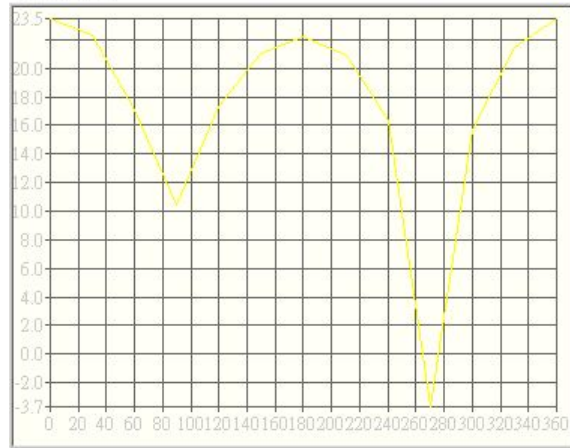
GSM Ch.
190@Theta 90.0
Vertical
Excel XY Plot



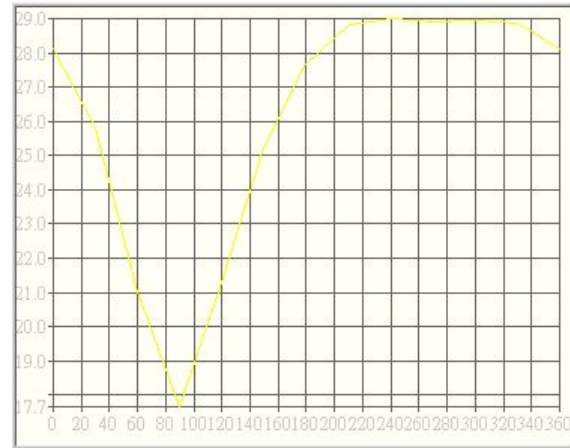
GSM Ch.
190@Theta 90.0
Total
Excel XY Plot



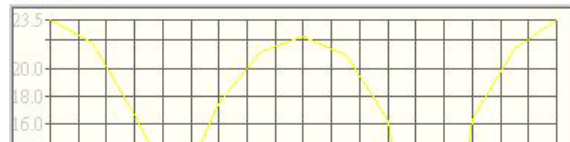
GSM Ch.
190@Theta
120.0
Horizontal
Excel XY Plot



GSM Ch.
190@Theta
120.0
Vertical
Excel XY Plot



GSM Ch.
190@Theta
120.0
Total
Excel XY Plot

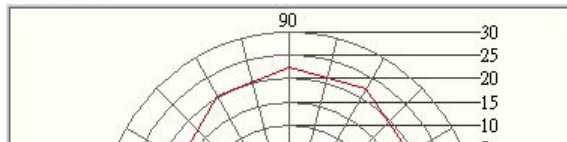




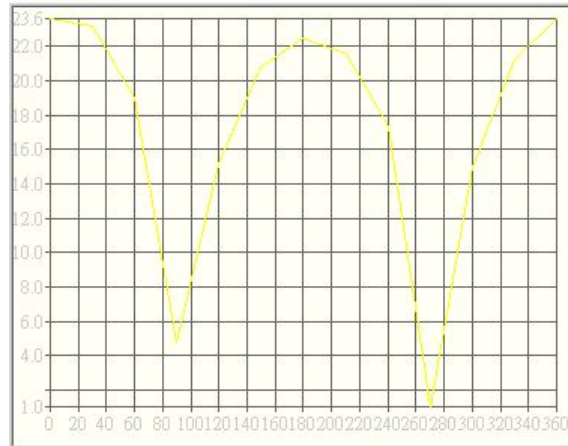
GSM Ch.
190@Theta
150.0
Horizontal
Excel XY Plot



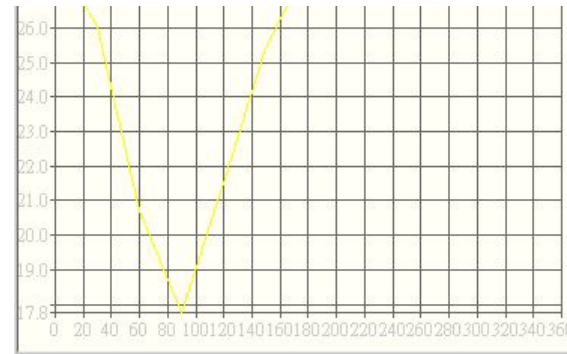
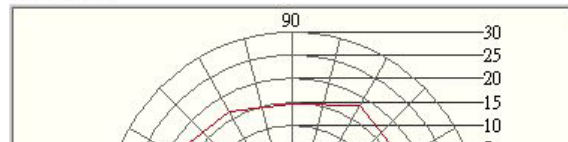
GSM Ch.
190@Theta 30.0
Horizontal
Excel XY Plot



GSM Ch.
190@Theta
150.0
Vertical
Excel XY Plot



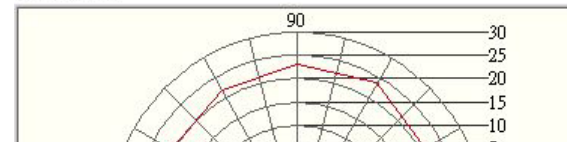
GSM Ch.
190@Theta 30.0
Vertical
Excel XY Plot

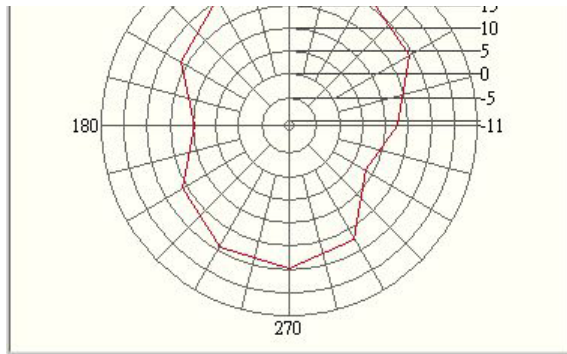


GSM Ch.
190@Theta
150.0
Total
Excel XY Plot

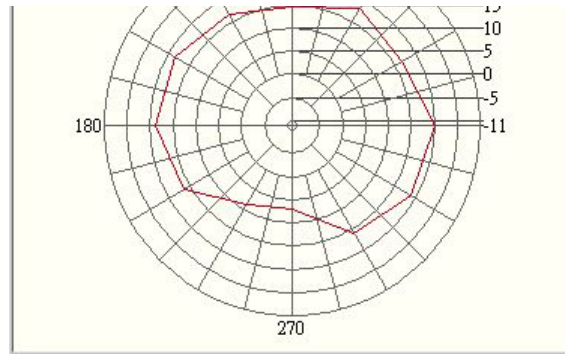


GSM Ch.
190@Theta 30.0
Total
Excel XY Plot

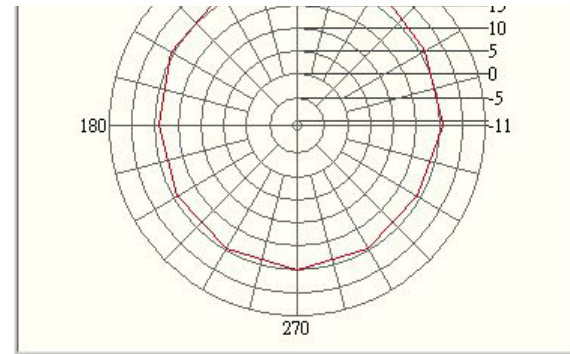




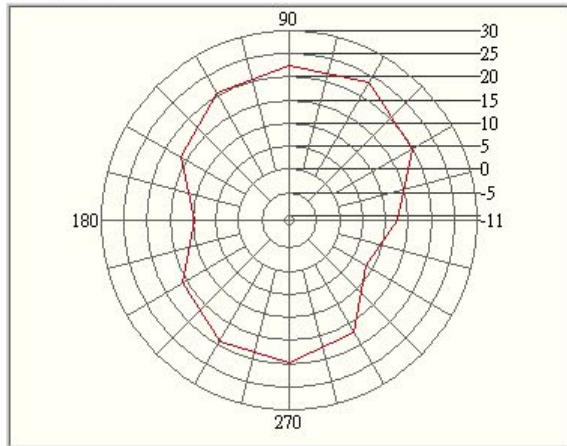
GSM Ch.
190@Theta 60.0
Horizontal
Excel XY Plot



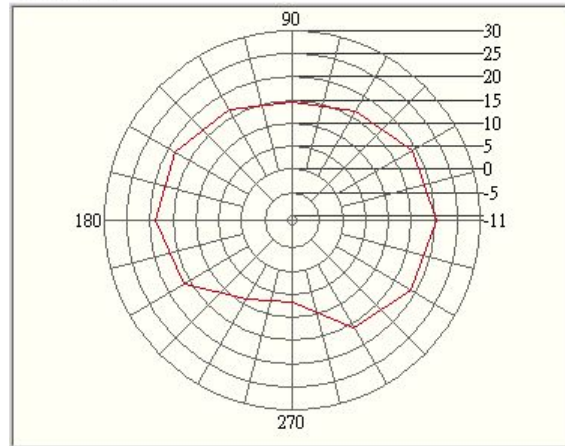
GSM Ch.
190@Theta 60.0
Vertical
Excel XY Plot



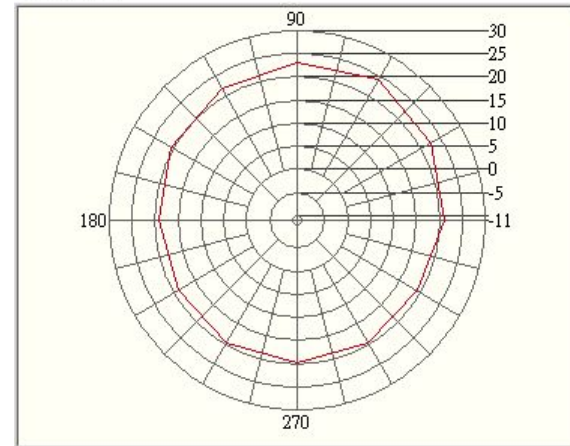
GSM Ch.
190@Theta 60.0
Total
Excel XY Plot



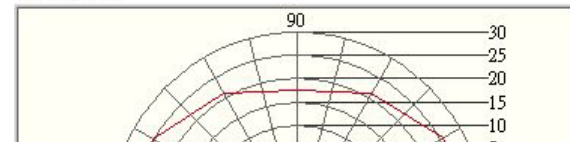
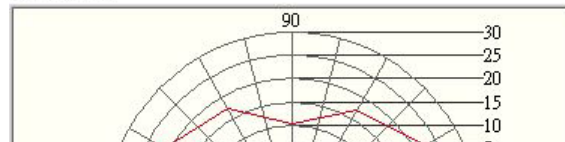
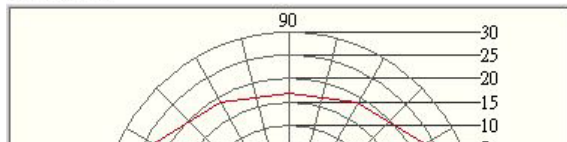
GSM Ch.
190@Theta 90.0
Horizontal
Excel XY Plot

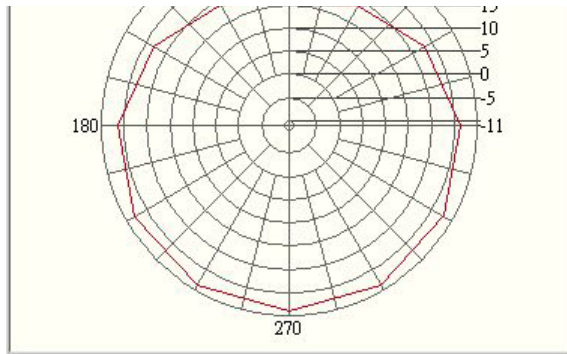


GSM Ch.
190@Theta 90.0
Vertical
Excel XY Plot

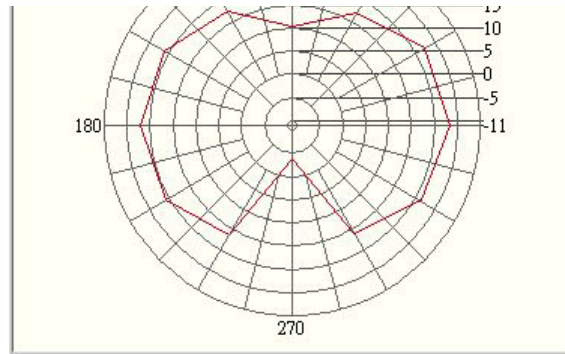


GSM Ch.
190@Theta 90.0
Total
Excel XY Plot

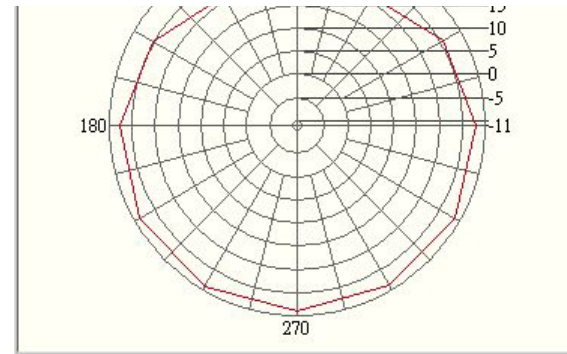




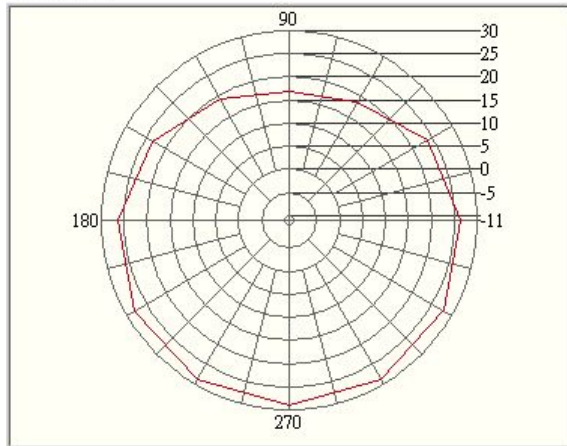
GSM Ch.
190@Theta
120.0
Worksheet1
Excel XY Plot



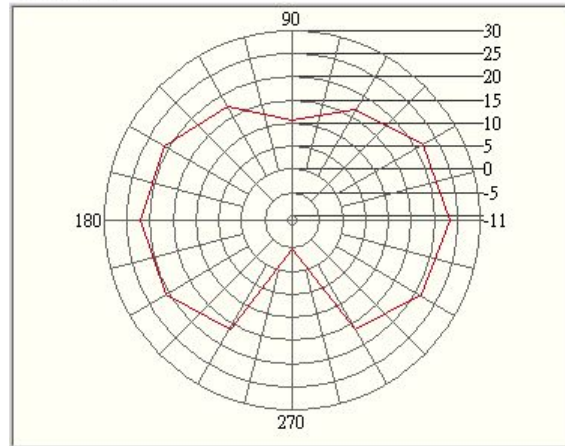
GSM Ch.
190@Theta
120.0
Worksheet1
Excel XY Plot



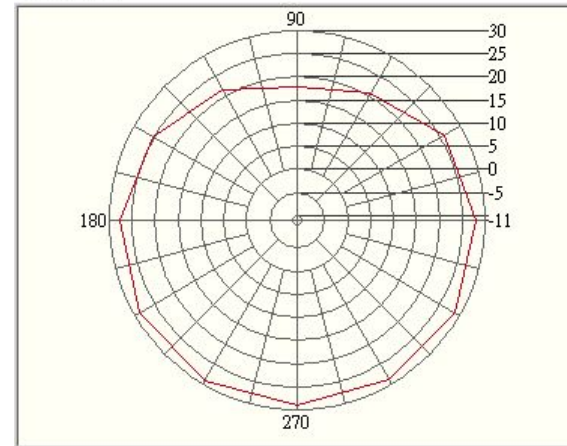
GSM Ch.
190@Theta
120.0
Worksheet1
Excel XY Plot



GSM Ch.
190@Theta
150.0
Worksheet1
Excel XY Plot



GSM Ch.
190@Theta
150.0
Worksheet1
Excel XY Plot



GSM Ch.
190@Theta
150.0
Worksheet1
Excel XY Plot

