

# RADWIN 1000/2000



## Broadband Wireless Transmission System

### User Manual

Version 2.12

# RADWIN 1000/2000

## User Manual

### Notice

This manual contains information that is proprietary to RADWIN Ltd. (RADWIN hereafter). No part of this publication may be reproduced in any form whatsoever without prior written approval by RADWIN.

Right, title and interest, all information, copyrights, patents, know-how, trade secrets and other intellectual property or other proprietary rights relating to this manual and to the RADWIN products and any software components contained therein are proprietary products of RADWIN protected under international copyright law and shall be and remain solely with RADWIN.

The RADWIN name is a registered trademark of RADWIN Ltd. No right, license, or interest to such trademark is granted hereunder, and you agree that no such right, license, or interest shall be asserted by you with respect to such trademark.

You shall not copy, reverse compile or reverse assemble all or any portion of the User Manual or any other RADWIN documentation or products. You are prohibited from, and shall not, directly or indirectly, develop, market, distribute, license, or sell any product that supports substantially similar functionality based or derived in any way from RADWIN products. Your undertaking in this paragraph shall survive the termination of this Agreement.

This Agreement is effective upon your opening of a RADWIN product package and shall continue until terminated. RADWIN may terminate this Agreement upon the breach by you of any term thereof. Upon such termination by RADWIN, you agree to return to RADWIN any RADWIN products and documentation and all copies and portions thereof.

For further information contact RADWIN at the address below or contact your local distributor.

### **Disclaimer**

The parameters quoted in this document must be specifically confirmed in writing before they become applicable to any particular order or contract. RADWIN reserves the right to make alterations or amendments to the detail specification at its discretion. The publication of information in this document does not imply freedom from patent or other rights of RADWIN, or others.

## RADWIN Worldwide Offices

### Corporate Headquarters

27 Habarzel Street  
Tel Aviv, 69710  
Israel  
**Tel:** +972 3 766 2917

### Support Headquarter

27 Habarzel Street  
Tel Aviv, 69710  
Israel  
**Tel:** +972 3 766 2900  
**Mobile:** +972 54 766 0044

### RADWIN North America

900 Corporate Drive  
Mahwah, NJ 07430  
USA  
**Tel (1):** 1 800 444 7234 / 341  
**Tel (2):** +1 201 529 1100 / 341

### Latin America Headquarters

Rua Grao Mogol 828  
Belo Horizonte, MG 30310-010  
Brazil  
**Tel (1):** +55 31 919 76 402  
**Tel (2):** +972 54 758 6808

### India Headquarters

Mohan Co-operative Industrial Estate  
E-13, B-1 Extn  
New Delhi, 110044  
India  
**Tel:** +91 11 4053 9180

### APAC Headquarters

1 Jalan Kuala #13-01  
The Morningside, 239639  
Singapore  
**Tel:** +65 9878 3004

### Indonesia Sales Office

Jl. Jenderal Sudirman Kav. 86  
Jakarta, 10220  
Indonesia  
**Tel:** +62 8138 570 0657

### Philippines Sales Office

37A. A luna St. West Rembo  
Makati City, 1200  
Philippines  
**Tel:** +63 2882 6886  
**Mobile:** +63 91 789 23427

### China Sales Office

Asian Games Village  
Huiyuan Gongyu J1312  
Beijing 100101  
China  
**Tel:** +86 010 8498 0629

**For technical support contact: [support@radwin.com](mailto:support@radwin.com)**

**For technical support in India only, contact: [support-india@radwin.com](mailto:support-india@radwin.com)**

**For sales support contact: [sales@radwin.com](mailto:sales@radwin.com)**

**Website: [www.radwin.com](http://www.radwin.com)**

# Regulatory Compliance

## General Note

This system has achieved Type Approval in various countries around the world. This means that the system has been tested against various local technical regulations and found to comply. The frequency bands in which the system operates may be “unlicensed” and in these bands, the system can be used provided it does not cause interference.

## FCC - Compliance

This equipment has been tested and found to comply with the limits for a Class B digital device, pursuant to Part 15 of the FCC Rules. These limits are designed to provide reasonable protection against harmful interference in a residential installation. This equipment generates, uses and can radiate radio frequency energy and, if not installed and used in accordance with the instructions, may cause harmful interference to radio communications. However, there is no guarantee that interference will not occur in a particular installation. If this equipment does cause harmful interference to radio or television reception, which can be determined by turning the equipment off and on, the user is encouraged to try to correct the interference by one or more of the following measures:

- Reorient or relocate the receiving antenna.
- Increase the separation between the equipment and receiver.
- Connect the equipment into an outlet on a circuit different from that to which the receiver is connected.

Consult the dealer or an experienced radio/TV technician for help.

Changes or modifications to this equipment not expressly approved by the party responsible for compliance could void the user's authority to operate the equipment.



**Warning**

It is the responsibility of the installer to ensure that when using the outdoor antenna kits in the United States (or where FCC rules apply), only those antennas certified with the product are used. The use of any antenna other than those certified with the product is expressly forbidden in accordance to FCC rules CFR47 part 15.204.



**Caution**

Outdoor units and antennas should be installed ONLY by experienced installation professionals who are familiar with local building and safety codes and, wherever applicable, are licensed by the appropriate government regulatory authorities. Failure to do so may void the product warranty and may expose the end user or the service provider to legal and financial liabilities. Resellers or distributors of this equipment are not liable for injury, damage or violation of regulations associated with the installation of outdoor units or antennas.



**Warning**

The antenna used for this transmitter must be installed to provide a separation distance of at least 223 cm from all persons and must not be co-located or operated in conjunction with any other antenna or transmitter.

---

Indoor Units comply with part 15 of the FCC rules. Operation is subject to the following two conditions:

(1) These devices may not cause harmful interference.

(2) These devices must accept any interference received, including interference that may cause undesired operation.

### **Canadian Emission Requirements for Indoor Units**

This Class B digital apparatus complies with Canadian ICES-003.

*Cet appareil numérique de la classe B est conforme à la norme NMB-003 du Canada.*

# Table of Contents

<b>Notice</b> .....	<b>i</b>
<b>RADWIN Worldwide Offices</b> .....	<b>ii</b>
<b>Regulatory Compliance</b> .....	<b>iii</b>
<b>Chapter 1 Introduction</b>	
Welcome! .....	1-1
Key Applications.....	1-1
<i>WiMAX and IP Backhaul</i> .....	<i>1-1</i>
<i>Broadband Access</i> .....	<i>1-2</i>
<i>Private Networks</i> .....	<i>1-2</i>
Key Features of RADWIN 1000/2000 .....	1-3
RADWIN 1000/2000 Link .....	1-5
<i>The Radio Outdoor Unit (ODU)</i> .....	<i>1-5</i>
<i>The Indoor Unit (IDU)</i> .....	<i>1-7</i>
<i>Power Over Ethernet (PoE) Devices</i> .....	<i>1-8</i>
Antennas .....	<i>1-8</i>
Flat Panel Antennas.....	1-9
Parabolic Dish Antennas .....	1-10
<i>RADWIN Manager</i> .....	<i>1-10</i>
Accessories .....	<i>1-11</i>
<i>Documentation set supplied with RADWIN 1000/2000</i> .....	<i>1-11</i>
How to Use this Manual .....	1-12
A Little Terminology .....	1-12
Conventions Used in this Manual .....	1-14
Notifications.....	<i>1-14</i>
Typographical conventions .....	<i>1-14</i>
General .....	1-14
Software.....	1-14
<i>Windows Terminology</i> .....	<i>1-15</i>
<b>Chapter 2 Site Preparation</b>	
Planning the Link Site .....	2-1
Overview .....	<i>2-1</i>
The Site Survey.....	2-1
Introduction .....	<i>2-1</i>
<i>Recommended Equipment</i> .....	<i>2-1</i>
Stage 1: Preliminary Survey .....	2-2
Stage 2: Physical Survey .....	2-3
<i>Additional Outdoor Site Requirements</i> .....	<i>2-4</i>
<i>Additional Indoor Site Requirements</i> .....	<i>2-4</i>
Stage 3: RF Survey.....	2-4
<b>Chapter 3 Hardware Installation</b>	
Safety Practices.....	3-1
<i>Preventing overexposure to RF energy</i> .....	<i>3-1</i>
Grounding.....	<i>3-1</i>
<i>Protection against Lightning</i> .....	<i>3-2</i>
General.....	<i>3-2</i>
Package Contents.....	3-2
<i>ODU Package Contents</i> .....	<i>3-2</i>
<i>IDU Package Contents</i> .....	<i>3-4</i>
<i>External Antenna Package Contents</i> .....	<i>3-5</i>
Additional Tools and Materials Required .....	3-5
Tools and Materials.....	<i>3-5</i>
Cables and connectors .....	<i>3-5</i>
Hardware Installation Sequence .....	3-5
Outdoor installation .....	3-6
<i>Mounting the ODU</i> .....	<i>3-6</i>
<i>Mounting external antennas</i> .....	<i>3-7</i>
<i>Mounting the Lightning Protection Devices</i> .....	<i>3-7</i>

<i>Outdoor Connections</i> .....	3-8
Indoor Installation .....	3-8
<i>Mounting the IDUs</i> .....	3-8
<i>Connecting power to the IDU</i> .....	3-11
<i>Connecting the ODU to the IDU</i> .....	3-11
<i>Installing a Link using PoE Devices</i> .....	3-11
<i>Connecting User Equipment</i> .....	3-12
Connecting and Aligning ODUs / Antennas .....	3-12
<b>Chapter 4 Link Installation: The RADWIN Manager</b>	
Installing the RADWIN Manager Application .....	4-1
<i>Minimum System Requirements</i> .....	4-1
<i>Installing the Software</i> .....	4-1
Starting the RADWIN Manager .....	4-2
Login Errors .....	4-5
<i>Unsupported Device</i> .....	4-5
<i>Incorrect IP Address</i> .....	4-6
<i>Incorrect Password</i> .....	4-6
Continuing without an IP Address.....	4-6
<i>Changing the Log On Password</i> .....	4-7
Installing the Link: First steps.....	4-7
<i>Default Settings</i> .....	4-9
<i>Front Panel LEDs on the IDU-C</i> .....	4-9
<i>Installation Menu and Toolbar Functionality</i> .....	4-10
Installing the Link: Overview .....	4-13
Installing the Link: Step 1, Start the Wizard .....	4-14
Installing the Link: Step 2, System Parameters .....	4-14
<i>Changing the Link Password</i> .....	4-16
Installing the Link: Step 3, Channel Settings.....	4-17
Installing the Link: Step 4, Tx Power and Antenna Settings .....	4-19
<i>General</i> .....	4-20
<i>Dual Antennas at Both Sites</i> .....	4-20
<i>Single Antennas at Both Sites</i> .....	4-21
<i>Single and Dual Antennas</i> .....	4-21
<i>Considerations for Changing Antenna Parameters</i> .....	4-22
Installing the Link: Step 5, Services .....	4-25
Installing the Link: Step 6, Installation Summary and Exit .....	4-26
<b>Chapter 5 Configuring the Link</b>	
Link Configuration: Getting Started .....	5-1
<i>The Main Window of the RADWIN Manager</i> .....	5-1
<i>The RADWIN Manager Toolbar</i> .....	5-2
<i>The RADWIN Manager Main Menu</i> .....	5-3
<i>Elements of the RADWIN Manager Main Window</i> .....	5-6
Configuring the Link: Overview.....	5-10
Configuring the Link: Step 1, Start the Wizard .....	5-11
Configuring the Link: Step 2, System Parameters.....	5-11
Configuring the Link: Step 3, Channel Settings .....	5-12
Configuring the Link: Step 4, Tx Power and Antenna Settings.....	5-18
Configuring the Link: Step 5, Services.....	5-20
Configuring the Link: Step 6, Configuration Summary and Exit.....	5-21
<b>Chapter 6 Site Configuration</b>	
Configuring the Site.....	6-1
<i>Editing the Configuration Parameters by Site</i> .....	6-1
Functions on the left of the dialog box: .....	6-2
Functions at the top of the dialog box:.....	6-2
Viewing Air Interface Details .....	6-3
Changing the Transmit Power .....	6-4
Site Management: IP Address and VLAN .....	6-4
<i>Configuring the ODU Address</i> .....	6-4
<i>Configuring VLAN Settings</i> .....	6-5

Lost or forgotten VLAN ID.....	6-7
Setting the Date and Time .....	6-7
Ethernet Properties.....	6-9
<i>Configuring the Bridge</i> .....	6-9
ODU Mode.....	6-10
IDU Aging time .....	6-10
<i>Configuring Ethernet Ports Mode</i> .....	6-11
<i>Setting the Maximum Information Rate</i> .....	6-12
Displaying the Inventory .....	6-12
Security Features .....	6-13
<i>Changing the Link Password</i> .....	6-14
<i>RADWIN Manager Community Strings</i> .....	6-14
Editing Community Strings.....	6-15
Forgotten Community string.....	6-16
Muting the alignment tone .....	6-17
Setting External Alarm Inputs.....	6-17
Managing Configuration Files.....	6-18
<i>Backup Configuration to a File</i> .....	6-18
<i>Restoring a Configuration File</i> .....	6-19
<i>Resetting</i> .....	6-19
Configuration with Telnet.....	6-20
<b>Chapter 7 Monitoring and Diagnostics</b>	
Retrieving Link Information (Get Diagnostics).....	7-1
Link Compatibility .....	7-3
Reinstalling and Realigning a Link.....	7-3
The Link Budget Calculator .....	7-4
Performance Monitoring.....	7-4
<i>The Monitor Log</i> .....	7-4
Saving the Monitor Log .....	7-4
Viewing Performance Reports.....	7-5
Performance Monitoring Report Toolbar .....	7-9
Setting Air Interface Thresholds .....	7-9
<i>The Events Log</i> .....	7-10
<i>RADWIN Manager Traps</i> .....	7-11
Setting the Events Preferences.....	7-12
Saving the Events Log .....	7-13
Reverting Alarm Messages .....	7-14
Active Alarms.....	7-14
Remote Power Fail Indication.....	7-15
Troubleshooting .....	7-16
Replacing an ODU .....	7-16
Restoring Factory Setup.....	7-17
Online Help.....	7-17
Customer Support .....	7-17
<b>Appendix A Technical Specifications</b>	
Configuration .....	A-1
Radio .....	A-1
Ethernet Interface .....	A-2
Management.....	A-2
Mechanical.....	A-2
Power.....	A-3
Environmental.....	A-3
Safety.....	A-3
EMC .....	A-3
Air Interface.....	A-3
<b>Appendix B Wiring Specifications</b>	
ODU-IDU Cable .....	B-1
User Port Connectors.....	B-1
<i>LAN Port</i> .....	B-1
<i>IDU-C Alarm Connector</i> .....	B-3



## Appendix C Pole and Wall Installation

ODU Mounting Kit Contents.....	C-1
Mounting RADWIN 1000/2000 on a pole .....	C-2
Mounting RADWIN 1000/2000 on a Wall .....	C-3
Mounting an External Antenna .....	C-3

## Appendix D Link Budget Calculator

Overview .....	D-1
<i>User Input</i> .....	D-1
<i>Link Budget Calculator Internal Data</i> .....	D-1
Calculations .....	D-2
<i>EIRP</i> .....	D-2
<i>Expected RSS and Fade Margin</i> .....	D-2
<i>Min and Max Range</i> .....	D-2
<i>Service</i> .....	D-2
<i>Availability</i> .....	D-2
<i>Antenna Height</i> .....	D-3
Running the Link Budget Calculator .....	D-3
About the Fresnel Zone.....	D-13

## Appendix E Lightning Protection and Grounding Guidelines

Grounding for Antenna Cable .....	E-1
Grounding for Indoor/Outdoor Units .....	E-2
<i>ODU Grounding</i> .....	E-2
<i>IDU Grounding</i> .....	E-2
External Lightning Surge Suppressors and Grounding.....	E-3
Internal ESD Protection circuits .....	E-7

## Appendix F MIB Reference

Introduction.....	F-1
<i>About the MIB</i> .....	F-1
<i>Terminology</i> .....	F-1
Interface API .....	F-1
<i>Control Method</i> .....	F-1
<i>Community String</i> .....	F-2
Private MIB Structure .....	F-2
MIB Parameters .....	F-4
<i>Supported Variables from the RFC 1213 MIB</i> .....	F-4
<i>MIB Parameters</i> .....	F-5
MIB Traps.....	F-18
<i>General</i> .....	F-18
<i>Trap parameters</i> .....	F-18
<i>RADWIN Manager Traps</i> .....	F-21

## Appendix G External Alarms Specification

External Alarms Specification.....	G-1
------------------------------------	-----

## Appendix H Combo Configuration Tool

What is the Combo Configuration Tool? .....	H-1
Who may use the Combo Configuration Tool .....	H-1
Caveat to the use of the Combo Configuration Tool .....	H-1
Prerequisites to using the Combo Configuration Tool.....	H-1
Operating the Combo Configuration Tool.....	H-2
Before using the Combo Configuration Tool.....	H-2
Using the Combo Configuration Tool.....	H-2
If you receive an error message .....	H-6

## Appendix I Regional Notice: French Canadian

Procédures de sécurité.....	I-1
<i>Généralités</i> .....	I-1
<i>Mise à la terre</i> .....	I-1
<i>Protection contre la foudre</i> .....	I-2
<i>Précautions de sécurité pendant le montage de ODU</i> .....	I-2
<i>Connecter la terre à IDU-C</i> .....	I-3

Installation sur pylône et mur.....	I-4
<i>Contenu du kit de montage ODU .....</i>	<i>I-4</i>
<i>Montage sur un pylône .....</i>	<i>I-5</i>
<i>Montage sur un mur .....</i>	<i>I-6</i>
<i>Montage d'une antenne externe.....</i>	<i>I-7</i>
<i>Contenu du kit de montage d'une antenne externe .....</i>	<i>I-7</i>

**Index**

# List of Figures

FIGURE 1-1 TYPICAL WIMAX AND IP BACKHAUL APPLICATION .....	1-2
FIGURE 1-2 TYPICAL BROADBAND ACCESS APPLICATION .....	1-2
FIGURE 1-3 PRIVATE NETWORK.....	1-3
FIGURE 1-4 EXAMPLE OF LINK ARCHITECTURE - SYSTEM COMPONENTS .....	1-5
FIGURE 1-5 ODU FORM FACTORS.....	1-6
FIGURE 1-6 IDU-C FRONT PANEL.....	1-7
FIGURE 1-7 POE DEVICE - SHOWING THE RADIO ETHERNET PORT .....	1-8
FIGURE 1-8 ODU WITH INTEGRATED FLAT PANEL ANTENNA .....	1-9
FIGURE 1-9 FLAT PANEL ANTENNA .....	1-9
FIGURE 1-10 EXTERNAL ANTENNAS - PARABOLIC DISH.....	1-10
FIGURE 1-11 RADWIN MANAGER SCREEN.....	1-11
FIGURE 1-12 SITE CONFIGURATION WINDOW WITH OPEN MANAGEMENT PANEL .....	1-16
FIGURE 3-1 ODU MOUNTING KIT .....	3-3
FIGURE 3-2 CONNECTORIZED ODU - FRONT AND REAR VIEWS.....	3-3
FIGURE 3-3 INTEGRATED ODU - FRONT AND REAR VIEWS .....	3-4
FIGURE 3-4 IDU-C PACKAGE CONTENTS - THE IDU-C.....	3-4
FIGURE 3-5 IDU-C PACKAGE CONTENTS - THE MOUNTING KIT AND DC POWER PLUGS .....	3-4
FIGURE 3-6 TYPICAL INSTALLATION DIAGRAM (WITH EXTERNAL ANTENNA).....	3-6
FIGURE 3-7 IDU-C FRONT PANEL .....	3-8
FIGURE 3-8 IDU-C - A PERSPECTIVE VIEW .....	3-9
FIGURE 3-9 IDU-C LEDs .....	3-10
FIGURE 3-10 DU-C OWER CONNECTORS.....	3-11
FIGURE 3-11 BEEP SEQUENCE FOR ANTENNA ALIGNMENT .....	3-13
FIGURE 4-1 LAN PORTS ON THE FRONT PANEL OF THE IDU-C.....	4-2
FIGURE 4-2 PINGING AN UNINSTALLED AND UNCONFIGURED LINK.....	4-3
FIGURE 4-3 LOGIN SCREEN .....	4-3
FIGURE 4-4 LOGIN SCREEN WITH COMMUNITY OPTIONS VISIBLE.....	4-5
FIGURE 4-5 UNSUPPORTED DEVICE MESSAGE .....	4-5
FIGURE 4-6 UNREACHABLE DEVICE MESSAGE.....	4-6
FIGURE 4-7 OPENING RADWIN MANAGER WINDOW PRIOR TO INSTALLATION .....	4-8
FIGURE 4-8 IDU-C FRONT PANEL LEDs .....	4-10
FIGURE 4-9 LINK INSTALLATION WIZARD.....	4-14
FIGURE 4-10 : INSTALLATION WIZARD, SYSTEM DIALOG BOX .....	4-15
FIGURE 4-11 CHANGE LINK PASSWORD DIALOG BOX.....	4-16
FIGURE 4-12 LOST OR FORGOTTEN LINK PASSWORD RECOVERY.....	4-17
FIGURE 4-13 CHANNEL SETTINGS - AUTOMATIC CHANNEL SELECTION.....	4-18
FIGURE 4-14 CHANNEL SETTINGS - SHOWING AVAILABLE INSTALLATION RATES .....	4-19
FIGURE 4-15 TRANSMISSION POWER AND ANTENNA PARAMETERS.....	4-20
FIGURE 4-16 ANTENNA CONFIGURATION DIALOG WITH OPENED TYPE SELECTION .....	4-23
FIGURE 4-17 ANTENNA PARAMETERS CHANGE WARNING.....	4-24
FIGURE 4-18 TX POWER LIMITS.....	4-24
FIGURE 4-19 SERVICES AND RATES DIALOG.....	4-25
FIGURE 4-20 INSTALLATION WIZARD EXIT SUMMARY .....	4-26
FIGURE 4-21 MAIN WINDOW OF THE MANAGER AFTER INSTALLATION.....	4-27
FIGURE 5-1 MAIN WINDOW, WIRELESS LINK IS ACTIVE .....	5-2
FIGURE 5-2 ETHERNET BANDWIDTH INDICATION .....	5-8
FIGURE 5-3 LINK CONFIGURATION WIZARD.....	5-11
FIGURE 5-4 CONFIGURATION WIZARD, SYSTEM DIALOG BOX.....	5-12
FIGURE 5-5 CHANNEL SETTINGS DIALOG BOX - AUTOMATIC CHANNEL SELECTION .....	5-13
FIGURE 5-6 SEARCHING FOR THE BEST OPERATING CHANNEL .....	5-14
FIGURE 5-7 CHANNEL SETTINGS WITHOUT AUTOMATIC CHANNEL SELECTION.....	5-15
FIGURE 5-8 CHANNEL FREQUENCY OPTIONS .....	5-16
FIGURE 5-9 CHOOSING AN "OTHER" OPERATING CHANNEL FREQUENCY .....	5-17
FIGURE 5-10 TRANSMISSION POWER AND ANTENNA PARAMETERS.....	5-18
FIGURE 5-11 ANTENNA CONFIGURATION DIALOG WITH OPENED TYPE SELECTION .....	5-19
FIGURE 5-12 SERVICES AND RATES DIALOG.....	5-20
FIGURE 5-13 CONFIGURATION WIZARD EXIT SUMMARY.....	5-21

FIGURE 5-14 MAIN WINDOW OF THE MANAGER AFTER CONFIGURATION .....	5-22
FIGURE 6-1 CONFIGURATION DIALOG BOX .....	6-2
FIGURE 6-2 AIR INTERFACE DETAILS .....	6-3
FIGURE 6-3 CHANGING THE TRANSMIT POWER.....	6-4
FIGURE 6-4 MANAGEMENT ADDRESSES - SITE CONFIGURATION DIALOG BOX.....	6-5
FIGURE 6-5 CONFIGURING MANAGEMENT TRAFFIC VLAN SETTINGS .....	6-6
FIGURE 6-6 DATE AND TIME CONFIGURATION .....	6-8
FIGURE 6-7 CHANGE DATE AND TIME .....	6-8
FIGURE 6-8 DATE AND TIME CONFIGURED FROM AN NTP SERVER.....	6-9
FIGURE 6-9 BRIDGE CONFIGURATION - SITE CONFIGURATION DIALOG BOX .....	6-10
FIGURE 6-10 INVENTORY SCREEN .....	6-13
FIGURE 6-11 AVAILABLE SECURITY FEATURES.....	6-14
FIGURE 6-12 CHANGING THE COMMUNITY STRING .....	6-16
FIGURE 6-13 ALTERNATIVE COMMUNITY DIALOG BOX .....	6-17
FIGURE 6-14 EXTERNAL ALARM CONFIGURATION .....	6-18
FIGURE 6-15 TELNET MANAGEMENT SCREEN .....	6-22
FIGURE 7-1 GET DIAGNOSTICS DIALOG BOX .....	7-2
FIGURE 7-2 PREFERENCES DIALOG BOX.....	7-5
FIGURE 7-3 BASIC PERFORMANCE MONITORING REPORT .....	7-6
FIGURE 7-4 A TYPICAL PERFORMANCE MONITORING REPORT .....	7-6
FIGURE 7-5 THRESHOLD CONFIGURATION DIALOG BOX .....	7-9
FIGURE 7-6 EVENTS LOG DISPLAY.....	7-10
FIGURE 7-7 PREFERENCES DIALOG BOX.....	7-13
FIGURE 7-8 ACTIVE ALARMS SUMMARY .....	7-15
FIGURE 7-9 ONLINE HELP FOR RADWIN 1000/2000.....	7-17
FIGURE B-1 EXAMPLE FOR CONNECTING THE ALARM CONNECTOR.....	B-4
FIGURE C-4 MOUNTING ON A POLE.....	C-2
FIGURE C-5 MOUNTING ON A WALL .....	C-3
FIGURE D-1 ACCESSING THE LINK BUDGET CALCULATOR .....	D-4
FIGURE D-2 LINK BUDGET SCREEN.....	D-5
FIGURE D-3 PRODUCT SELECTOR .....	D-7
FIGURE D-4 RATE SELECTOR.....	D-8
FIGURE D-5 CALCULATION OF DISTANCE FROM SITE COORDINATES.....	D-9
FIGURE D-6 CLIMACTIC C FACTORS.....	D-10
FIGURE D-7 CLIMACTIC C FACTOR DESCRIPTION .....	D-11
FIGURE D-8 WORLD MAP SHOWING C FACTOR CONTOURS .....	D-12
FIGURE D-9 FRESNEL ZONE .....	D-13
FIGURE E-1 GROUNDING ANTENNA CABLES .....	E-2
FIGURE E-2 GROUNDING A TYPICAL POLE INSTALLATION .....	E-3
FIGURE E-3 GROUNDING A TYPICAL WALL INSTALLATION.....	E-4
FIGURE E-4 ODU SURGE SUPPRESSOR AND GROUNDING .....	E-4
FIGURE E-5 TRANSECTOR'S SURGE SUPPRESSOR .....	E-5
FIGURE E-6 SURGE SUPPRESSOR AND GROUNDING AT BUILDING ENTRY POINT.....	E-7
FIGURE F-1 TOP LEVEL SECTIONS OF THE PRIVATE MIB.....	F-3
FIGURE I-4 MONTAGE SUR UN PYLÔNE .....	I-5
FIGURE I-5 MONTAGE SUR UN MUR .....	I-6

# List of Tables

TABLE 1-1 AVAILABLE ODU PRODUCTS - RELEASE 2.12 .....	1-7
TABLE 1-2 RELEASE 2.1 IDU-C PRODUCTS.....	1-7
TABLE 3-1 COMPONENTS OF AN IDU-C FRONT PANEL .....	3-9
TABLE 3-2 IDU-C FRONT PANEL LEDES.....	3-10
TABLE 4-1 PC REQUIREMENTS FOR THE RADWIN MANAGER APPLICATION.....	4-1
TABLE 4-2 RADWIN MANAGER: OFFLINE FUNCTIONALITY.....	4-7
TABLE 4-3 DEFAULT SETTINGS.....	4-9
TABLE 4-4 FRONT PANEL LEDES.....	4-10
TABLE 4-5 RADWIN MANAGER MAIN MENU FUNCTIONALITY .....	4-11
TABLE 4-6 RADWIN MANAGER TOOLBAR.....	4-12
TABLE 4-7 LINK INSTALLATION WIZARD .....	4-13
TABLE 4-8 RADWIN 1000/2000 TRANSMISSION RATES .....	4-22
TABLE 5-1 RADWIN MANAGER TOOLBAR.....	5-3
TABLE 5-2 RADWIN MANAGER MAIN MENU FUNCTIONALITY .....	5-4
TABLE 5-3 LINK DETAILS.....	5-6
TABLE 5-4 LINK SITE DETAILS, SITE A AND SITE B .....	5-7
TABLE 5-5 STATUS BAR INDICATORS.....	5-9
TABLE 5-6 LINK CONFIGURATION WIZARD .....	5-10
TABLE 6-1 ODU MODE CONFIGURATION FOR COMMON .....	6-11
TABLE 6-2 TELNET COMMANDS .....	6-20
TABLE 7-1 GET DIAGNOSTICS DATA AND DESCRIPTION .....	7-2
TABLE 7-2 LINK COMPATIBILITY TRAP MESSAGES .....	7-3
TABLE 7-3 EXPLANATION OF PERFORMANCE DATA.....	7-8
TABLE 7-4 ACTION OF THE TOOLBAR BUTTONS.....	7-9
TABLE 7-5 RADWIN MANAGER TRAP MESSAGES.....	7-11
TABLE 7-6 ACTIVE ALARMS COMMAND BUTTONS .....	7-15
TABLE 7-7 LED FAULT INDICATORS.....	7-16
TABLE 7-8 TROUBLESHOOTING .....	7-16
TABLE B-1 ODU-IDU CONNECTOR PINOUT.....	B-1
TABLE B-2 FAST ETHERNET CONNECTOR PINOUT.....	B-2
TABLE B-3 IDU-C ALARM CONNECTOR (DRY-CONTACT) .....	B-3
TABLE B-4 TERMINAL BLOCK 3-PIN -48VDC .....	B-4
TABLE C-1 BILL OF MATERIALS: ODU MOUNTING KIT.....	C-1
TABLE F-1 SUPPORTED RFC 1213 VARIABLES .....	F-4
TABLE F-2 PRIVATE MIB PARAMETERS.....	F-5
TABLE F-3 MIB TRAPS.....	F-18
TABLE G-1 OUTPUT ALARMS PINOUT .....	G-1

# Introduction

## Welcome!

Welcome to the RADWIN 1000/2000 radio series, designed for the IP and WiMAX Backhaul, Private Networks and Broadband Access global markets. The RADWIN 1000/2000 series is an innovation in high-capacity carrier-grade sub-6GHz radios, and designed to meet the requirements of current and next-generation markets and applications. RADWIN 1000/2000 also features software configurable antenna port activation enabling single (RADWIN 1000) or dual (RADWIN 2000) antenna port operation

The RADWIN 1000/2000 radio series offers unmatched performance and carrier-class quality with the following features:

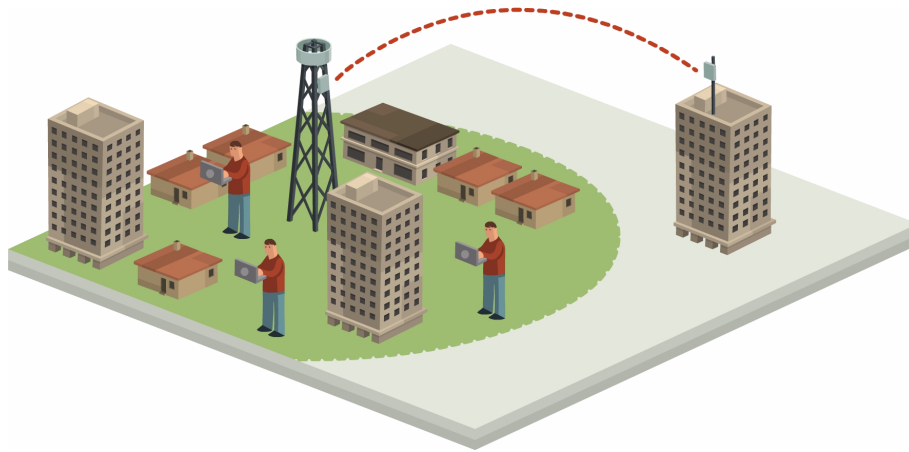
- Superior spectral efficiency at 5 and 20MHz channels
- High Ethernet capacity (130Mbps at 20MHz and 32.5Mbps at 5MHz channel bandwidths)
- Combo frequency products for maximum flexibility
- Advanced air-interface based on MIMO, built-in diversity and OFDM technologies
- Superior range performance
- Simple installation and management
- High Tx power of 29.95dBm

The RADWIN 1000/2000 radio series supports the 5.8 GHz spectrum band, and complies with international standards and regulations (FCC, IC Canada).

## Key Applications

### ***WiMAX and IP Backhaul***

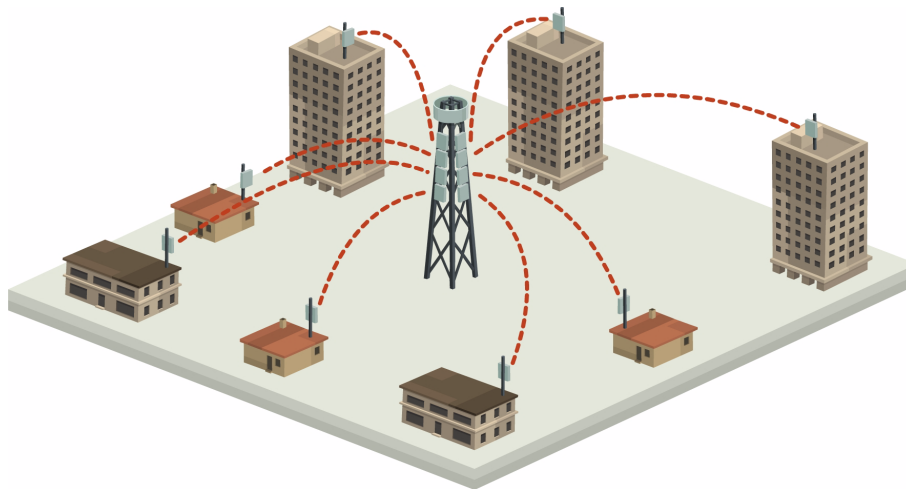
The RADWIN 1000/2000 radio series offers WiMAX operators and ISPs a unique, highly scalable and cost-effective backhaul solution. Designed to suit a wide range of topologies, RADWIN 1000/2000 is easy to install and maintain, enabling operators to quickly and efficiently expand their networks and introduce new services to a growing subscriber base.



*Figure 1-1: Typical Wimax and IP Backhaul application*

## **Broadband Access**

With RADWIN 1000/2000, service providers can quickly and efficiently expand their networks, and provide high-capacity services that meet the increasing demand for high-quality, high-speed broadband.



*Figure 1-2: Typical Broadband Access application*

## **Private Networks**

RADWIN 1000/2000 is the ultimate solution for private networks such as enterprises, education, government and utility organizations that wish to own and manage their own networks and eliminate the costly recurring charges from service providers.

RADWIN 1000/2000's cost-effective solution enables a variety of organizations to connect geographically dispersed sites at ranges of up to 80km (50 miles).

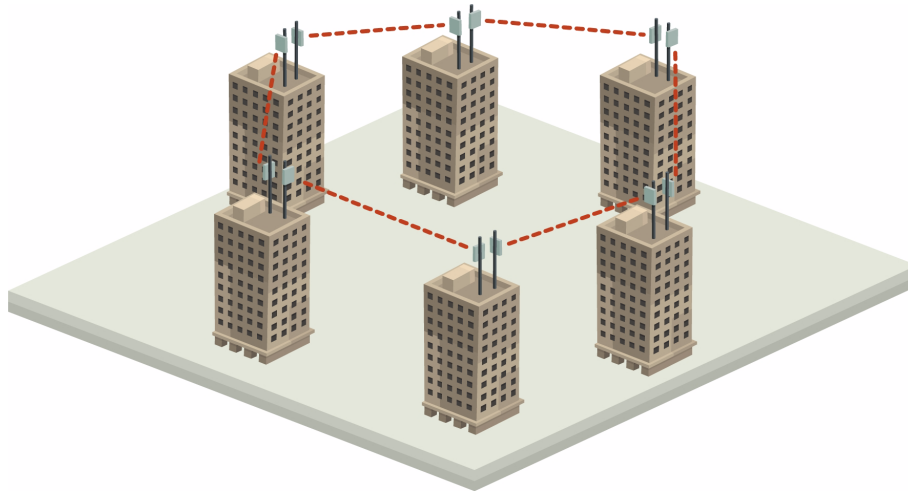


Figure 1-3: Private Network

## Key Features of RADWIN 1000/2000

Some of the outstanding features of the RADWIN 1000/2000 radio series are as follows:

⇒ High Capacity

The RADWIN 1000/2000 system provides a high-capacity link of 130Mbps at 20MHz and 32.5Mbps at 5MHz channel bandwidths.

⇒ Superior Spectral Efficiency

Built on advanced MIMO and OFDM technologies, the RADWIN 1000/2000 system provides a high-capacity link at channel bandwidth of 20MHz. This channel bandwidth supports high robustness of the air interface under interference and harsh conditions. In countries where applicable, narrow channel bandwidth reduces the cost of the spectrum license.

⇒ Advanced Air Interface

The RADWIN 1000/2000 system provides an advanced air-interface based on MIMO, built-in diversity and OFDM technologies, resulting in an exceptionally robust air interface.

Using the following technologies, the RADWIN 1000/2000 air interface is designed to ensure nonstop, high quality transmission, even under interference and harsh conditions:

- Automatic Adaptive Rate (AAR) is a mechanism that dynamically adapts the air interface rate by changing both the signal modulation and coding.
- Automatic Channel Selection (ACS) chooses the best channel by monitoring the available radio channels and dynamically selecting a channel which is best suited for transmission at any given time.
- Automatic Repeat Request (ARQ) is a mechanism for error control during data transmission. When the receiver detects an error in the received information, it automatically requests the



transmitter to resend the information. This process is repeated until the transmission is error free or the error continues beyond a predetermined number of maximum transmissions. RADWIN 1000/2000's ARQ mechanism is optimized for time-critical traffic.

- Forward Error Correction (FEC) with very low overhead and algorithms specifically designed for the varying conditions of license-exempt frequency bands, ensuring fast, robust and error-free communications.

⇒ High transmission (Tx) power of 29.95dBm

The RADWIN 1000/2000 system supports high Tx power, compliant with radio regulations. High Tx power increases the system's availability and range, and enables the high performance with smaller antennas, thus reducing the total cost of the solution (lower CAPEX), installation and tower rent costs (lower OPEX).

⇒ Superior range performance

The RADWIN 1000/2000 system supports high capacity at superior ranges. The Link Budget Calculator (appendix D) is used to determine the capacity and range according to the choice of product, antenna, type of service and environmental conditions.

⇒ Simple installation and management

RADWIN 1000/2000 systems are extremely simple to install and maintain. They are typically up and running in less than an hour.

The RADWIN Manager application has full local and remote management capabilities. The user-friendly SNMP based management tool provides full end-to-end configuration, event logging, and performance monitoring capabilities.

⇒ Enhanced Security

The security features of RADWIN 1000/2000 include:

- RADWIN 1000/2000's AES 128-bit integrated advanced encryption support provides enhanced air interface security for carriers and private networks. It ensures user data protection with one of the most sophisticated commercially available combined encryption and authentication techniques, CCM/AES. This technique combines message authentication (preventing anti-spoofing and replay protection) with commercial encryption, and complies with the IEEE 802.11i (phase iii) security recommendations.

CCM/AES uses a symmetric 128-bit encryption key (EK), and a nonce, and provides both message encryption and authenticating signature. The nonce mechanism enables the receiver to remember already received genuine messages and reject all replayed messages.

- Initial encryption and authentication is based on a user-defined master key (Link Password). While standard Wireless LAN encrypts only the Ethernet Payload, the AES encrypts both the source and destination MAC addresses.

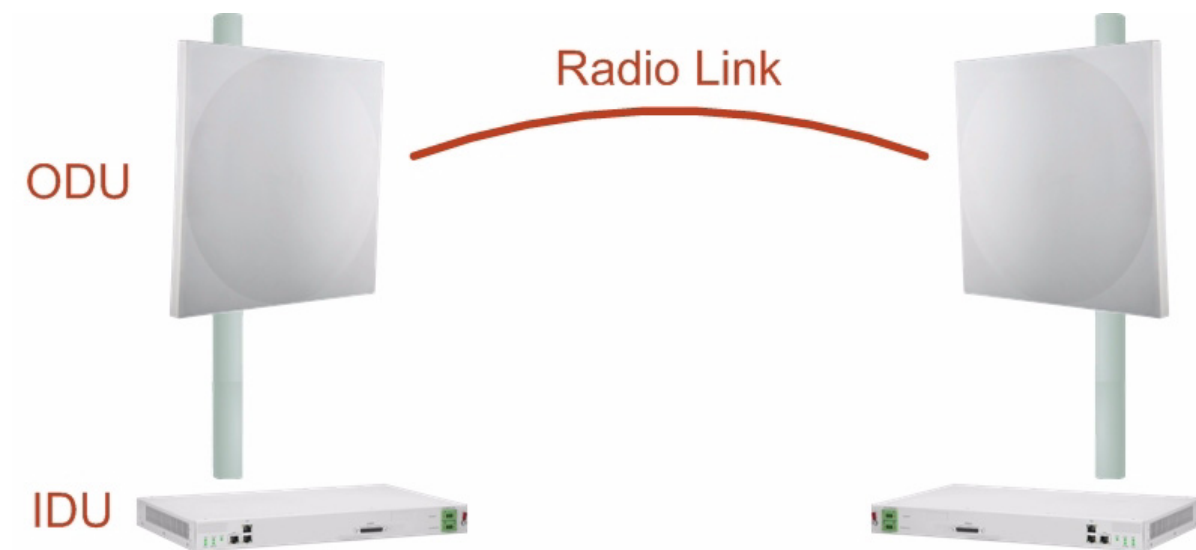
- In addition to normal login access, Read or Write Community access is available at login

## RADWIN 1000/2000 Link

The RADWIN 1000/2000 point-to-point solution is a wireless communication link. Typically each side of the link is comprised of an Outdoor Unit (ODU) and antenna and an Indoor Unit (IDU) or PoE device as shown in [figure 1-4](#) below.

The link is managed by the SNMP-based RADWIN Manager application.

The IDU and the ODU are connected by a CAT5e cable that carries the service traffic and power.



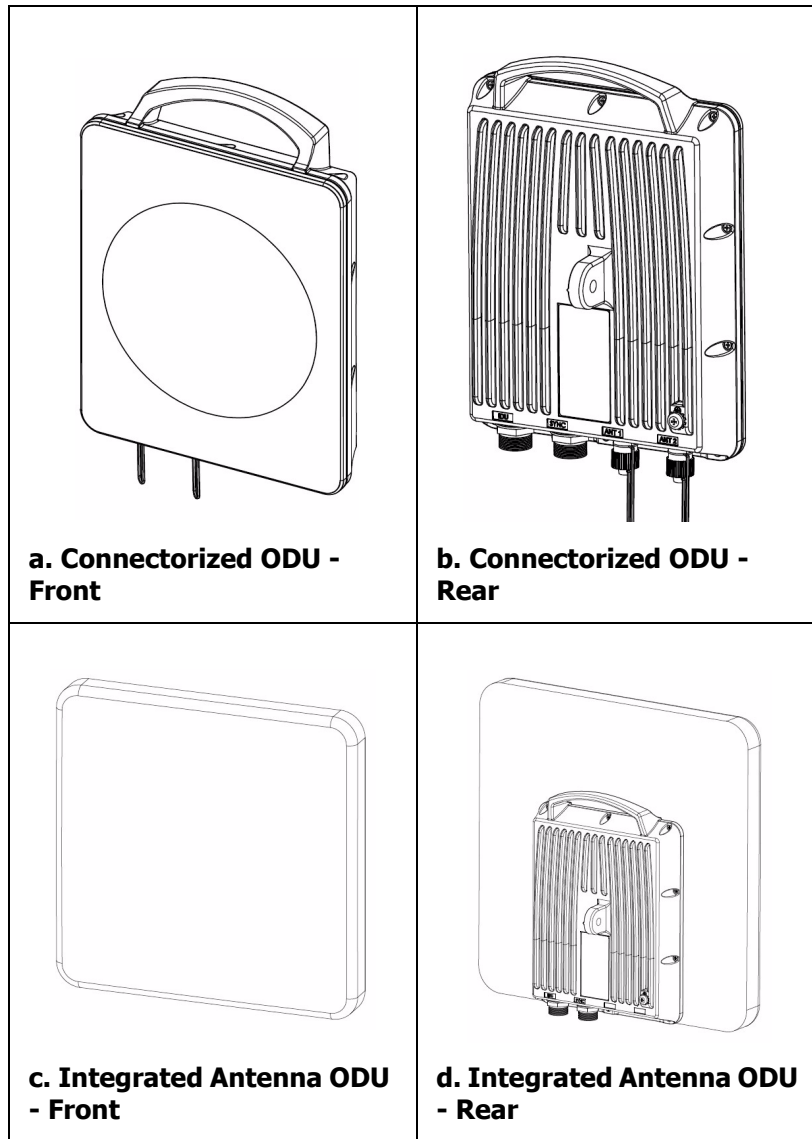
*Figure 1-4: Example of Link Architecture - System Components*

### **The Radio Outdoor Unit (ODU)**

The ODU is the radio transceiver of the RADWIN 1000/2000 system. It supports two radios for MIMO operation. It is available with an integrated antenna (***Integrated Antenna ODU***) or with connectors for an external antenna (***Connectorized ODU***).

The ODU may be mounted on a pole or a wall, and connects to the IDU or PoE device using a CAT5e cable.

The ODU comes in two form factors as shown in **figure 1-5** below:



*Figure 1-5: ODU Form Factors*

- **Integrated Antenna ODU**  
This ODU has an integrated 370mm (1.2ft) flat panel antenna, with a gain of 23dBi. The ODU contains both the radio and the antenna as a single unit housed in a weatherproof case.
- **Connectorized ODU**  
This ODU has 2x N-type connectors for connecting an external antenna.

The ODU products available in release 2.12 are shown below:

Table 1-1: Available ODU Products - Release 2.12

Part Number	Description	
	Form Factor	Frequency Bands and Regulations
2050-0150	Integrated antenna	FCC/IC 5.725 – 5.850 GHz (factory default)
2050-0250	Connectorized for external antenna (2x N-type)	

The only available external antenna is, single bipolar.

For further information, see [page 4-20, Installing the Link: Step 4, Tx Power and Antenna Settings](#).

### The Indoor Unit (IDU)

The IDU has the service ports and provides aggregation of these services towards the ODU that transports them over the air. The IDU also provides power to the ODU.

The IDU-C is a carrier-class 19 inch, 1U unit, providing two Ethernet ports, dry contact alarms and indication leds. It has two DC power feed connectors. An AC to DC converter is available for powering the IDU-C from an AC source. The IDU-C is designed to be rack mounted.

One IDU-C product is available in release 2.12:

Table 1-2: Release 2.1 IDU-C Products

Part Number	Ethernet ports	Power	Form factor
7200-2000	2	Dual DC feed -20 to -60VDC	19" 1U



Figure 1-6: IDU-C Front Panel

## Power Over Ethernet (PoE) Devices

The PoE device provides Ethernet service only, with power for the ODU. The PoE device is extremely compact, having only two Ethernet ports and a standard 3 pin male AC power socket.



Figure 1-7: PoE device - showing the radio Ethernet port

## Antennas

An antenna is the radiating and receiving element from which the radio signal, in the form of RF power, is radiated to its surroundings and vice versa. The antenna gain and transmitting power may be limited by country regulations.

The RADWIN 1000/2000 may be operated with an integrated antenna that is part of the ODU unit, or with external antennas connected to the ODU via N-type connectors. All cables and connections must be connected correctly to reduce RF losses. The required antenna impedance is 50Ω.

The Integrated Antenna ODU is provided with 370 mm (1.2ft) flat panel antenna, with a gain of 23dBi. The radio and the antenna are housed in a weatherproof case as a single unit.



Figure 1-8: ODU with integrated Flat Panel antenna

External antennas are available for the RADWIN 1000/2000 radios, varying in operating frequencies, form factor, size and gain, dual or single polarization.


**Flat Panel Antennas**

The Flat Panel antenna shown in [figure 1-9](#) below has an integrated or external configuration:

	<b>Integrated or External 1.2ft Flat Panel Dual Polarization</b>	
	<b>Frequency</b>	4.9 - 5.875 GHz ( <b>Ext</b> ) 4.9 – 6.0 GHz ( <b>Int</b> )
	<b>Gain</b>	<b>External</b> 22.5 dBi at 4.9 – 5.25 GHz 23 dBi at 5.25 – 5.875 GHz <b>Integrated</b> 21 dBi at 4.9 – 5.0 GHz 22 dBi at 5.0 – 5.15 GHz 23.5 dBi at 5.15 – 5.725 GHz 24 dBi at 5.725 – 6.0 GHz
	<b>Size</b>	1.2 x 1.2 ft / 371x371 mm
	<b>Beam Width</b>	H, V: 9° ( <b>Ext</b> ) H, V: 8° ( <b>Int</b> )

Figure 1-9: Flat Panel Antenna

## Parabolic Dish Antennas

	<b>External 2ft Dish Dual Polarization</b>	
	<b>Frequency</b>	5.150 - 5.875 GHz
	<b>Gain</b>	28 dBi
	<b>Diameter</b>	2 ft / 620 mm
	<b>Beam Width</b>	H,V: 5.6°

*Figure 1-10: External Antennas - Parabolic Dish*

See the RADWIN products catalog for RADWIN offering of external antennas. External antennas are also available from [authorized](#) antenna vendors.

### ***RADWIN Manager***

The RADWIN Manager is an SNMP-based management application which manages a complete link over a single IP address. It can also manage each side of the link separately.

The RADWIN Manager application facilitates installation and configuration of the link between the ODU units. The intuitive, easy-to-use RADWIN Manager has a graphical Microsoft Windows interface, and can be run locally and remotely.

The RADWIN Manager provides:

- Installation Wizard
- On-line monitoring of air interface quality allowing the administrator to monitor the service and status of each link
- On-line monitoring of equipment alarms and QoS
- Local and remote loopback testing
- Configuration settings
- On-line user manual and help files
- Link Budget Calculator for calculating the expected performance of the RADWIN 1000/2000 wireless link and the possible service configurations for a specific link range.

The RADWIN Manager can easily be integrated with any NMS system.

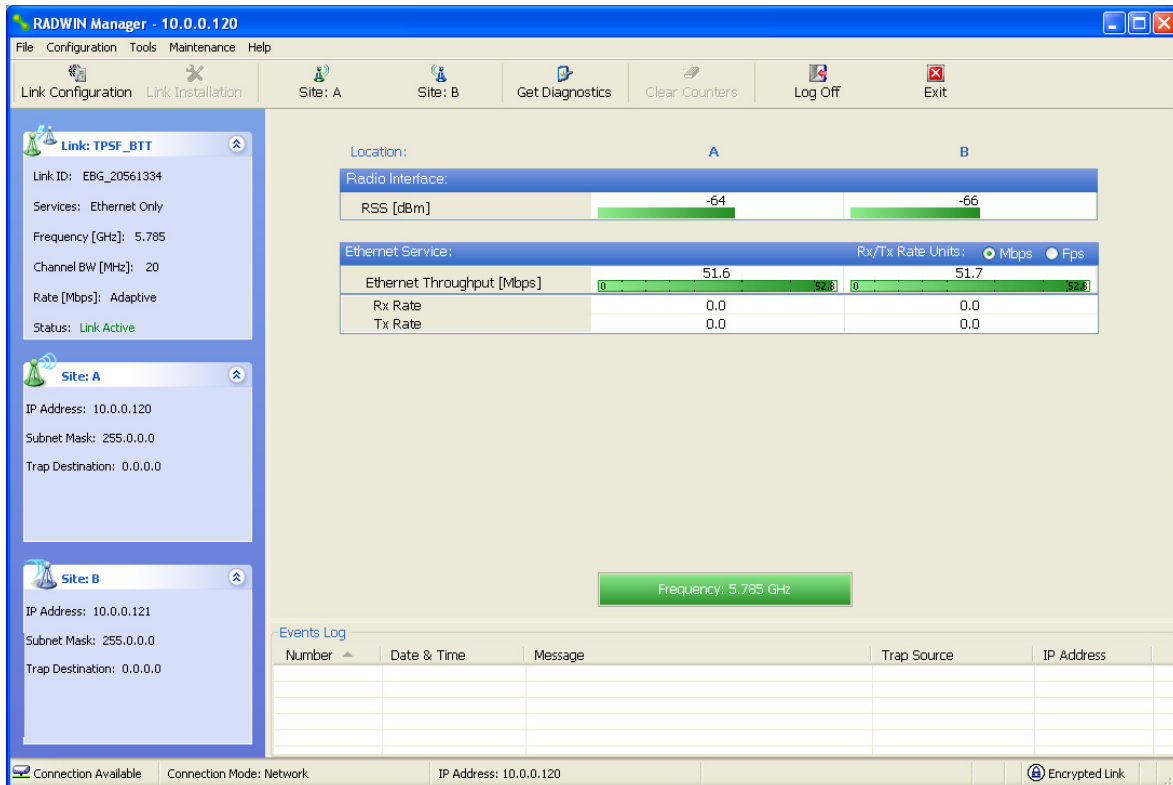


Figure 1-11: RADWIN Manager screen

## Accessories

RADWIN provides a variety of accessories to support the RADWIN 1000/2000 system:

- PoE devices
- AC Power Adaptor
- External Lightning Protection Unit
- Cables to connect the various system elements

## Documentation set supplied with RADWIN 1000/2000

The technical documentation supplied with a RADWIN 1000/2000 includes the following items:

- A Quick Start Guide for experienced installers
- A full User Manual - the document which you are reading



## How to Use this Manual

This User Manual is divided into functionally distinct chapters reflecting the activities required to set up a RADWIN 1000/2000. The division is shown in the following table:

Chapter/ Appendix	Subject	Audience
<b>2</b>	<b>Site Preparation</b>	Site survey team
<b>3</b>	<b>Hardware Installation</b>	Field technician
<b>4</b>	<b>Link Installation: The RADWIN Manager</b>	Installation technician
<b>5</b>	<b>Configuring the Link</b>	Installation technician, System manager
<b>6</b>	<b>Site Configuration</b>	Installation technician, System manager
<b>7</b>	<b>Monitoring and Diagnostics</b>	Installation technician, System manager
<b>A</b>	<b>Technical Specifications</b>	Installation technician, System manager
<b>B</b>	<b>Wiring Specifications</b>	Installation technician
<b>C</b>	<b>Pole and Wall Installation</b>	Installation technician
<b>D</b>	<b>Link Budget Calculator</b>	Installation technician
<b>E</b>	<b>Lightning Protection and Grounding Guidelines</b>	Field technician
<b>F</b>	<b>MIB Reference</b>	System manager
<b>G</b>	<b>External Alarms Specification</b>	Installation technician, System manager, Field technician
<b>H</b>	<b>Combo Configuration Tool</b>	Installation technician

## A Little Terminology

In the field, a link typically has a local or headquarters site as for example in [figure 1-2](#) above. Here the service provider is the local or headquarters site. The service recipient is the remote site.

Where the link is completely internal to a corporation, the choice of the local and remote is just a matter of convenience.

A **link** then, consists of two **sites**.

In Broadband Wireless terminology, the local and remote sites are sometimes referred to as "near" and "far", "HQ" and "remote" and so on.

The site which is closer to the network core (often the local site) will be referred to as **site A**, and the opposite side of the link, usually closer to the end user, as **site B**.

This choice is application-neutral and will be used throughout the manual both to describe the sites and their names as in the examples.

The link is configured and managed using a PC, the **managing computer** connected to site A. (The precise requirements for the managing computer are set out in [chapter 3, Hardware Installation](#)).

RADWIN 1000/2000 supports three connection methods for the managing computer:

- **Local** - a direct peer to peer connection between the Ethernet ports on the managing computer and the IDU or PoE device. Local connection is always read-write.
- **Network** - the managing computer and the site A IDU or PoE device belong to a LAN and communicate through a router or hub
- **Over-the-air** - the managing computer connects to site B via the air interface

The managing computer may be connected to the link through an IDU or a PoE device. In what follows, where ever we refer to an IDU it includes PoE devices unless stated otherwise. Typically, if we need to refer to an IDU as such, we will use a model name such as IDU-C.

## Conventions Used in this Manual

### **Notifications**

Notifications consist of Notes, Cautions and Warnings.



The purpose of a **Note** is to

- Draw your attention to something that may not be obvious or counter-intuitive
- Emphasize a special feature or peculiarity of the RADWIN 1000/2000
- Offer an external reference for additional information
- Add a caveat that would not qualify as a full Caution or Warning (see below)
- Provide additional background to what follows
- Offer a recommendation
- Highlight an indication of something to watch out for
- Advise you if an action has "side effects" i.e. it may disturb something else that would be best left undisturbed
- Remind you of something that should be kept in mind



A **Caution** is a notification of risk of damage to equipment or of service degradation



A **Warning** is a notification of risk of danger to persons operating near the equipment

### **Typographical conventions**

#### **General**

Where a term is defined or introduced for the first time, it is shown in Bold-face. You will have noticed this usage in the Terminology section above.

#### **Software**

The RADWIN Manager is a Microsoft Windows application following the user interface conventions of familiar Microsoft Windows programs.

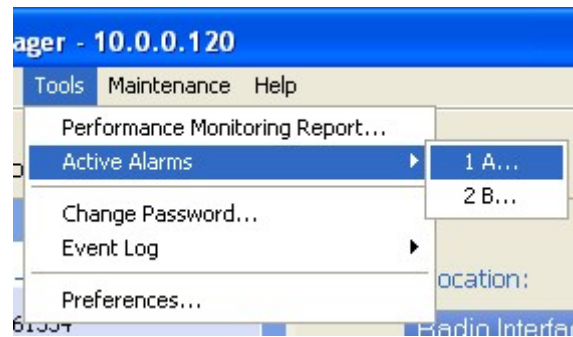
We would describe the chain of menu commands indicated in the following screen shot, like this:

#### **Tools | Active Alarms | 1 A**

using Boldface for the menu labels and vertical bars to separate them.

Similarly, mouse click items will be referred to like this:

“Click **Next** to continue.”



(A mouse click always uses the left mouse button unless stated otherwise.)

## **Windows Terminology**

Look at [figure 1-11](#) above. The main application display which you see consists of a frame-window with a menu bar, system icons and content. It will be referred to as a **window**, the **main window** or the Manager window depending on context.

The top line of icons is the **tool bar**, and provides part of the menu bar functionality with a mouse click.

At the bottom of the window is the **status bar**, a line of icons and text boxes.

The central part of the main window consists of several **panes**: On the right, there are Radio Interference, Ethernet Service and the Frequency panes. The left hand pane (with the blue background) is split into three sub-panes.

If you click Site A or Site B in the tool bar, you will be offered another window, which in turn displays one of several **panels** depending on which function you choose.

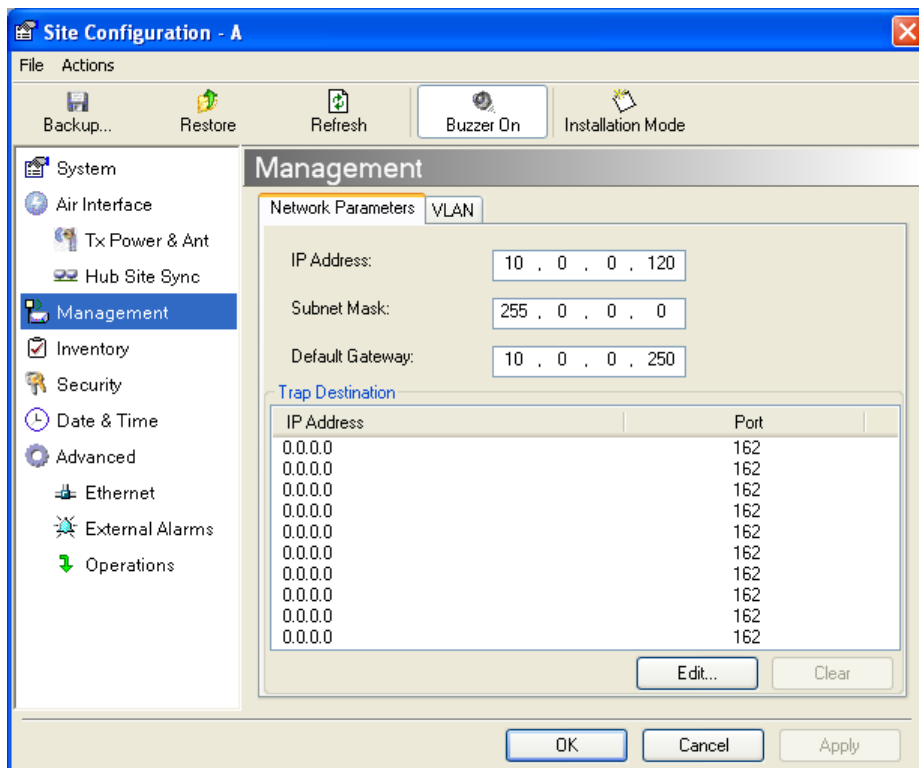


Figure 1-12: Site Configuration window with open Management panel