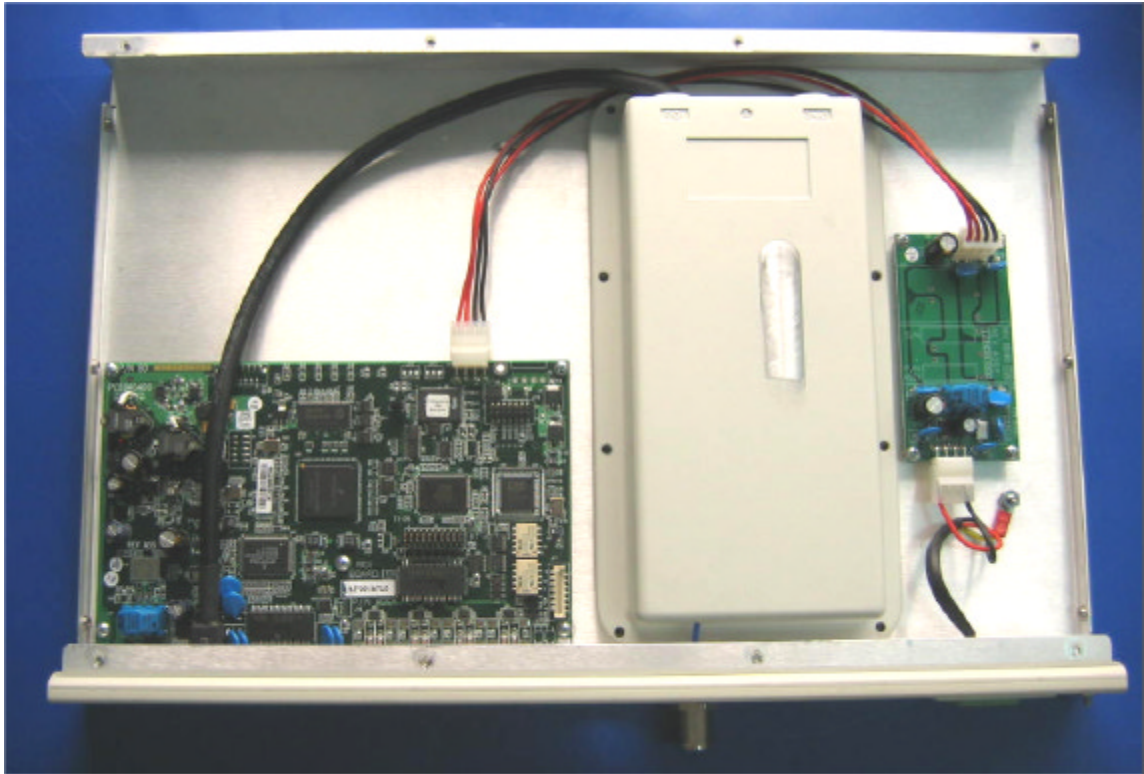


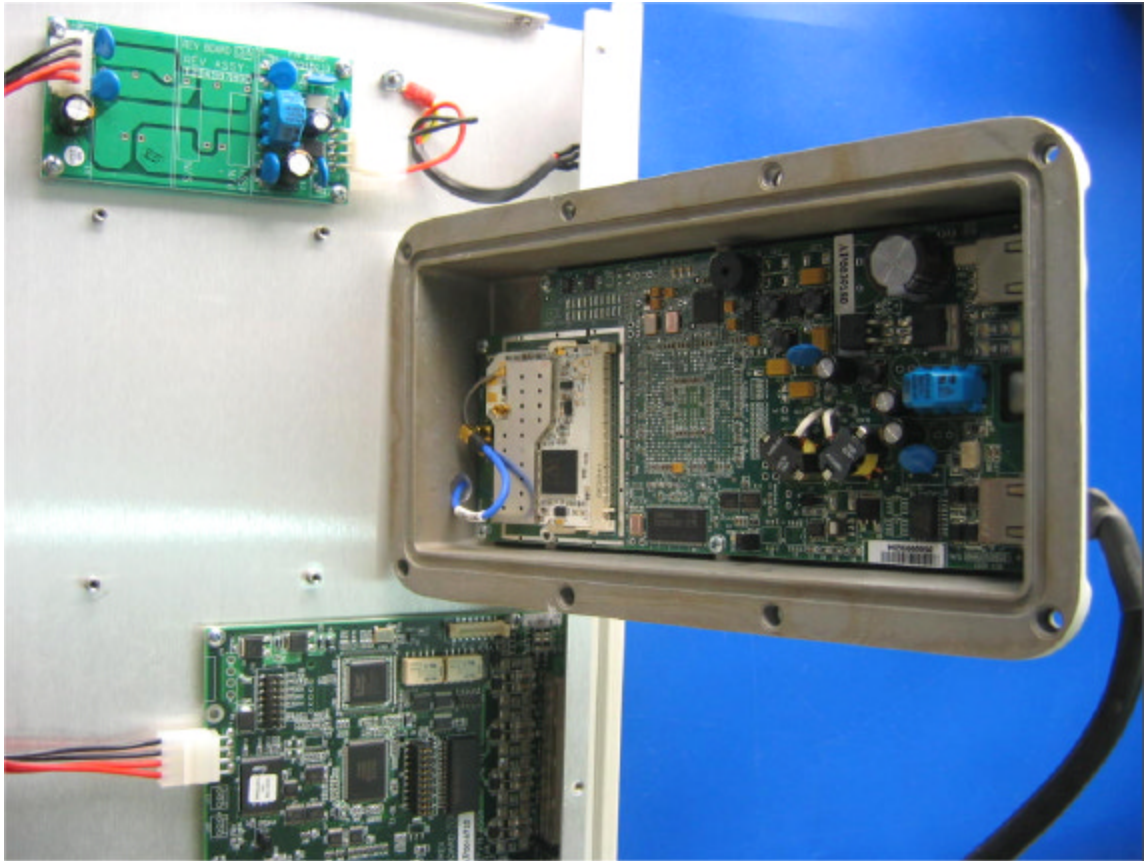
INTERNAL PHOTOGRAPHS

This document contains 21 photographs

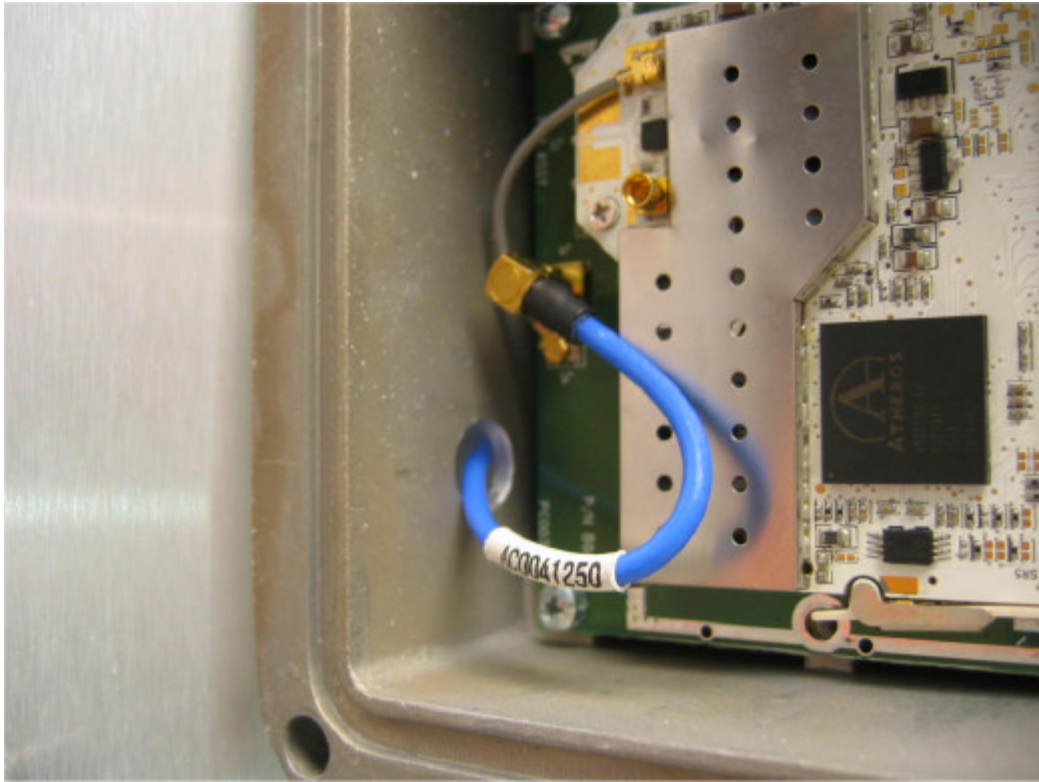
Photograph No.1
WL1000-AIND/F58 internal view



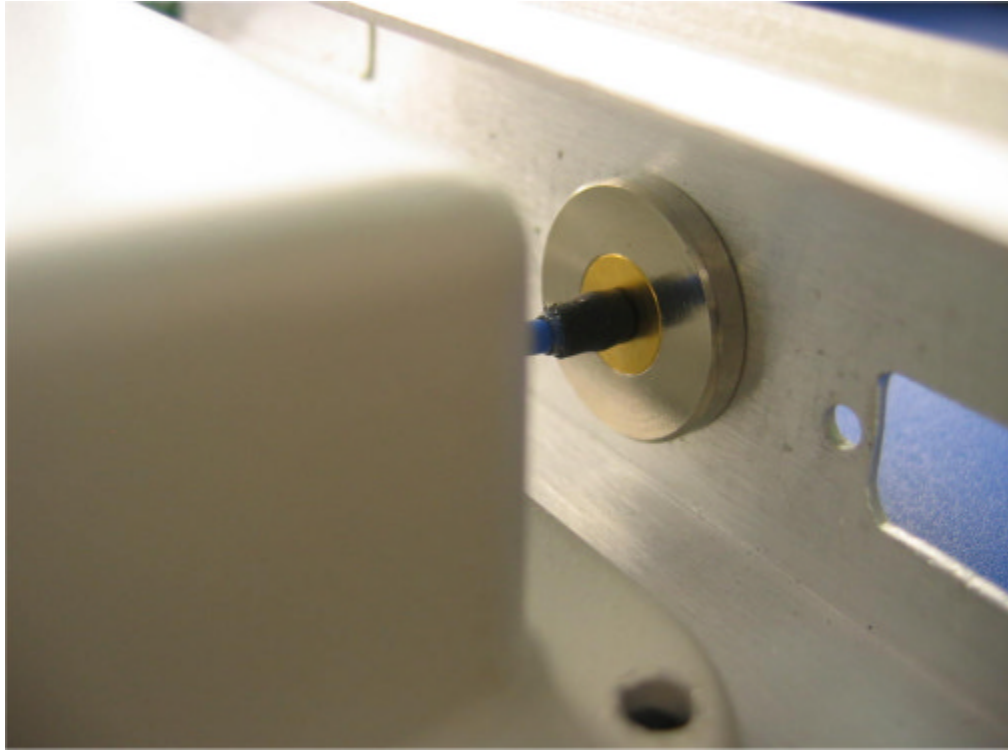
Photograph No.2
WL1000-AIND/F58 internal view with ODU raised



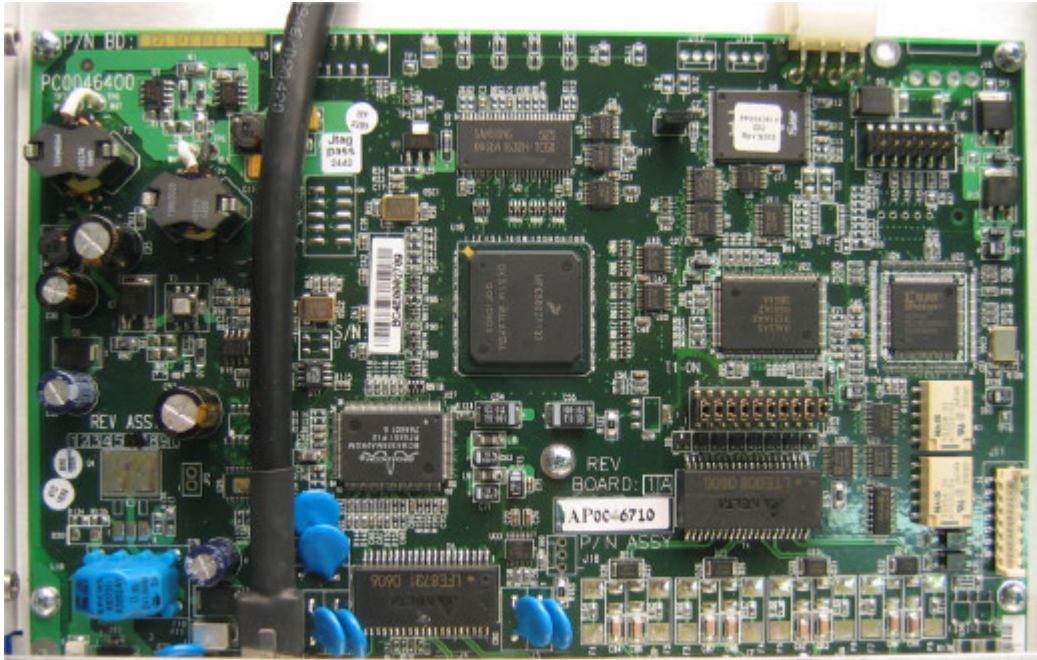
Photograph No.3
WL1000-AIND/F58 antenna cable from RF card



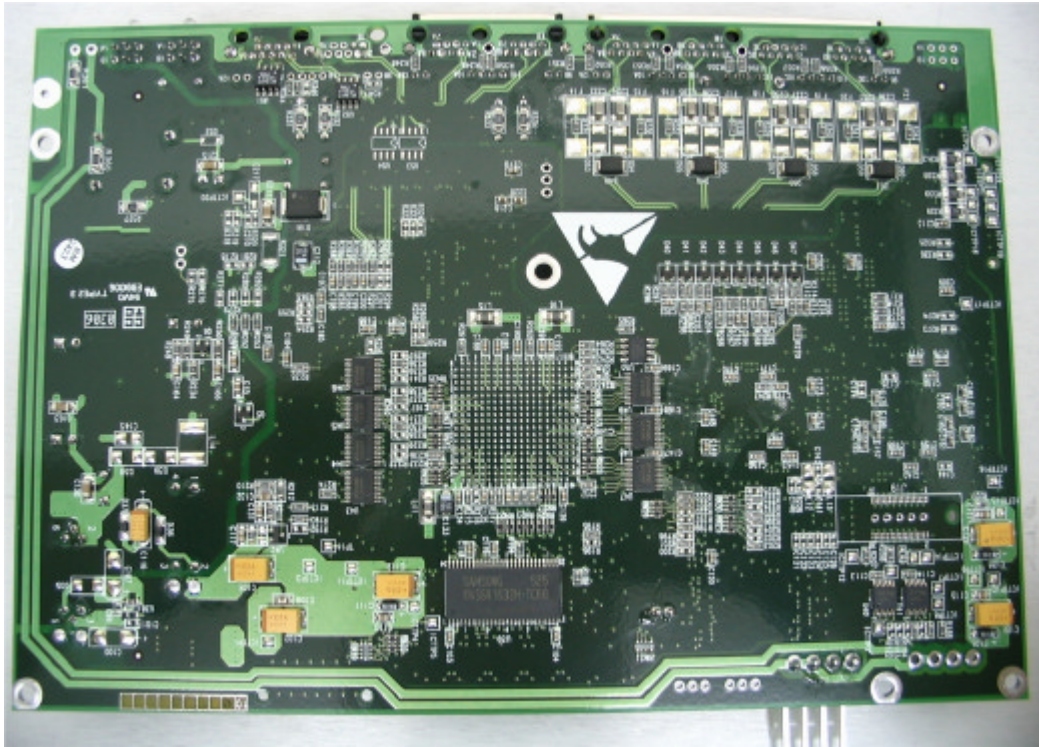
Photograph No.4
WL1000-AIND/F58 antenna inside connector view



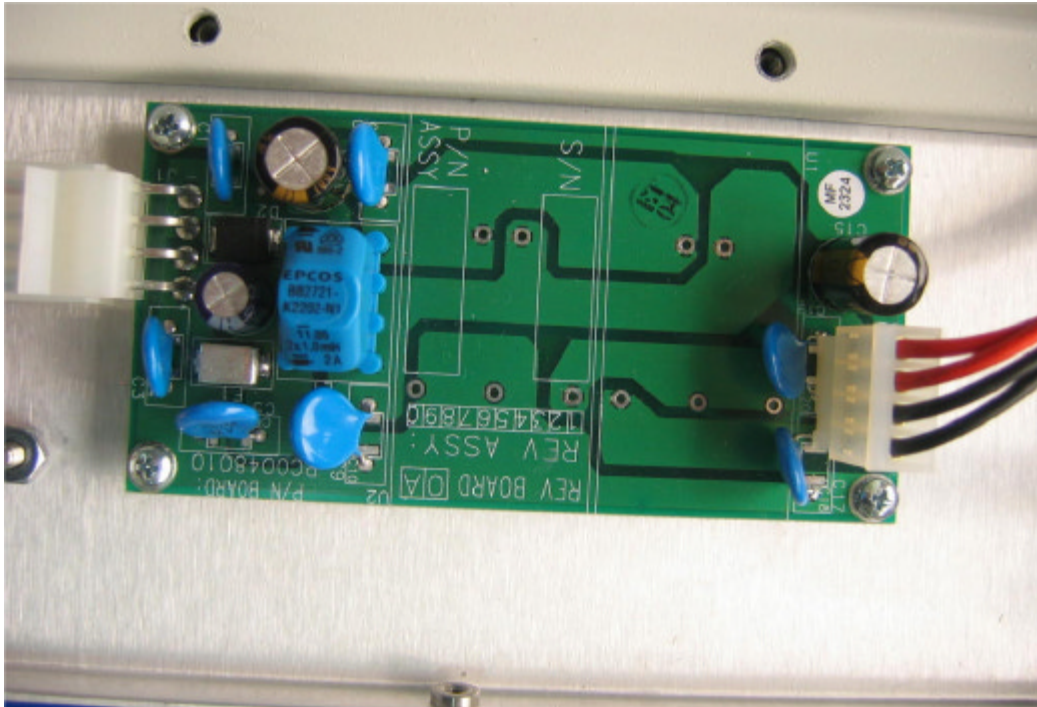
Photograph No.5
WL1000-AIND/F58 main PCB top view



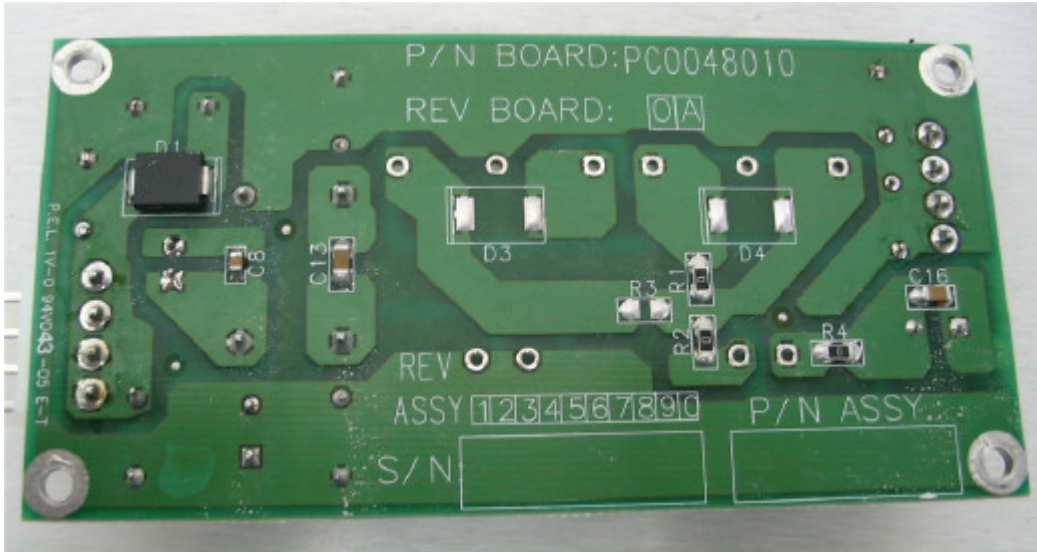
Photograph No.6
WL1000-AIND/F58 main PCB second side view



Photograph No.7
WL1000-AIND/F58 power supply PCB top view



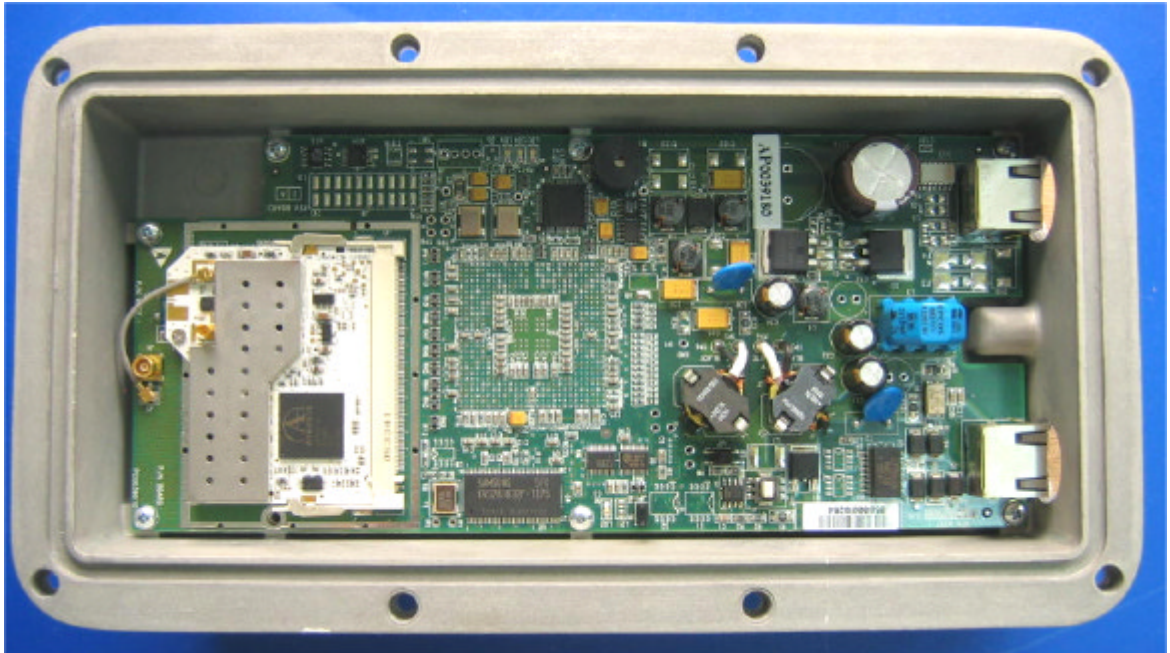
Photograph No.8
WL1000-AIND/F58 power supply PCB second side view



Photograph No.9
Winlink 1000-F58/HP (ODU) internal view



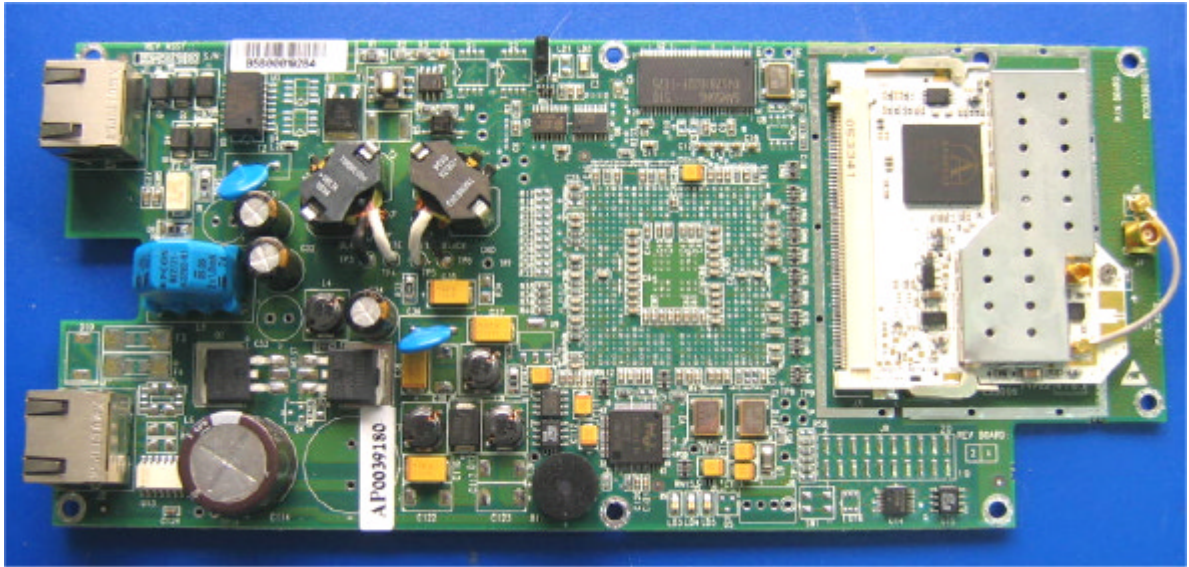
Photograph No.10
Winlink 1000-F58/HP (ODU) internal view without cover



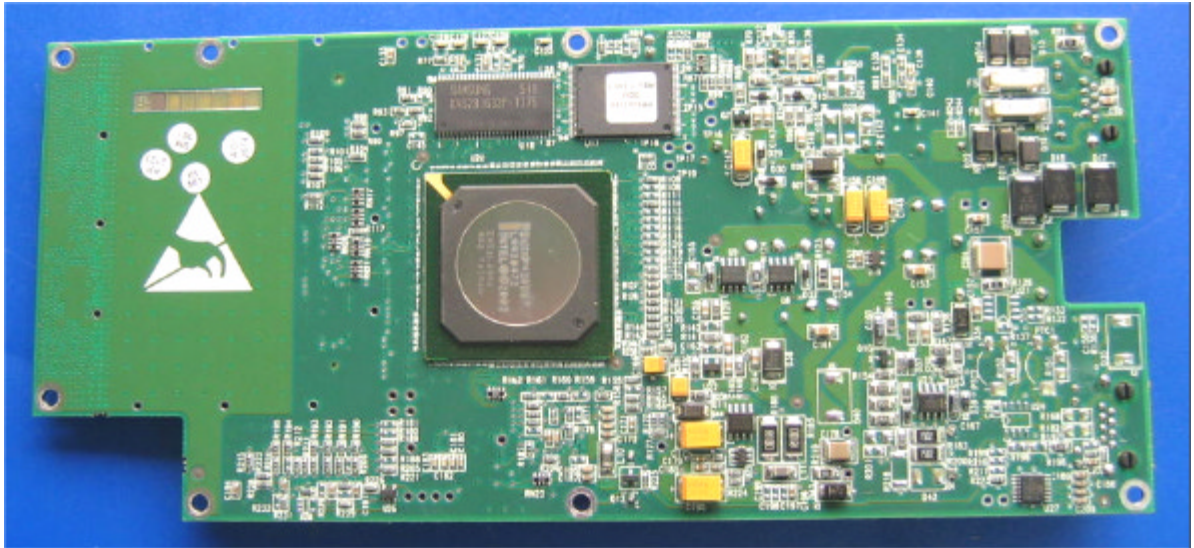
Photograph No.11
Winlink 1000-F58/HP (ODU)internal view, PCB removed from the case



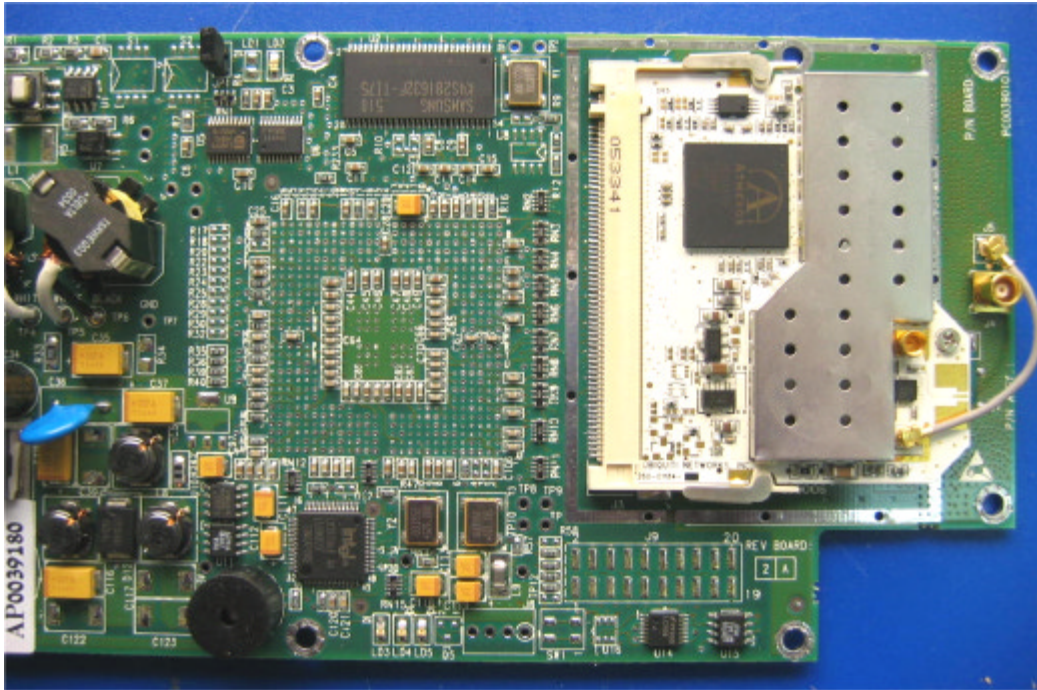
Photograph No.12
Winlink 1000-F58/HP (ODU)main PCB front view



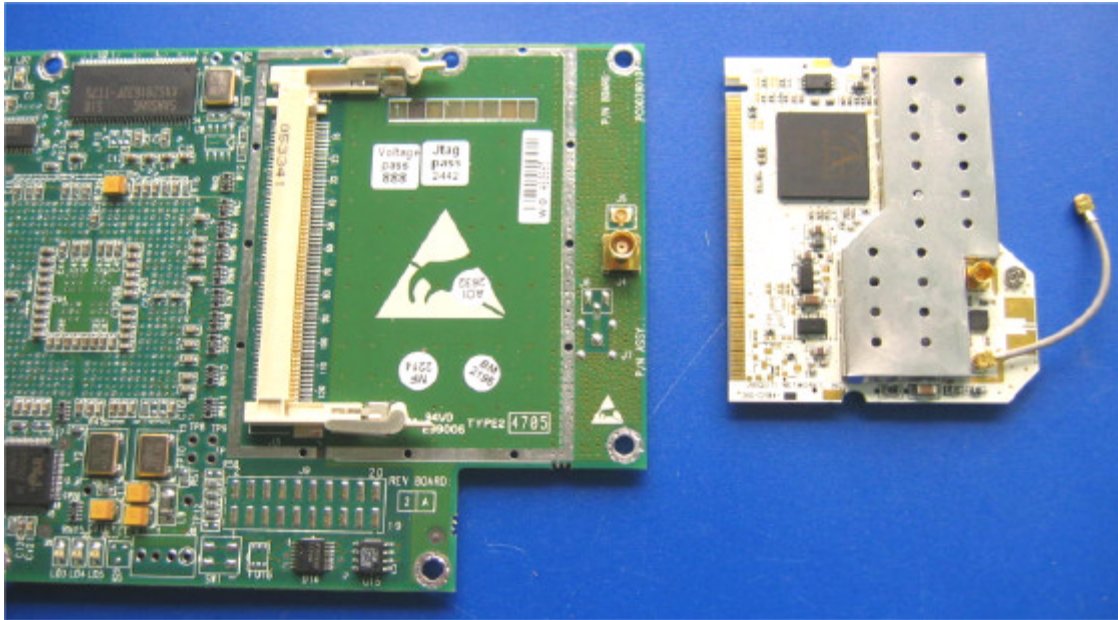
Photograph No.13
Winlink 1000-F58/HP (ODU) main PCB second side view



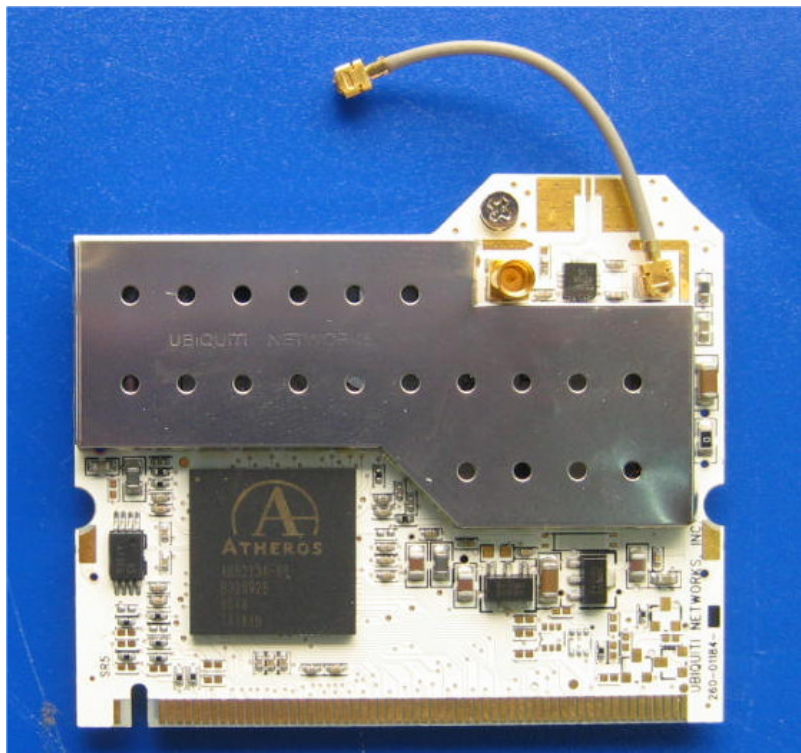
Photograph No.14
ODU mainPCB with RF card



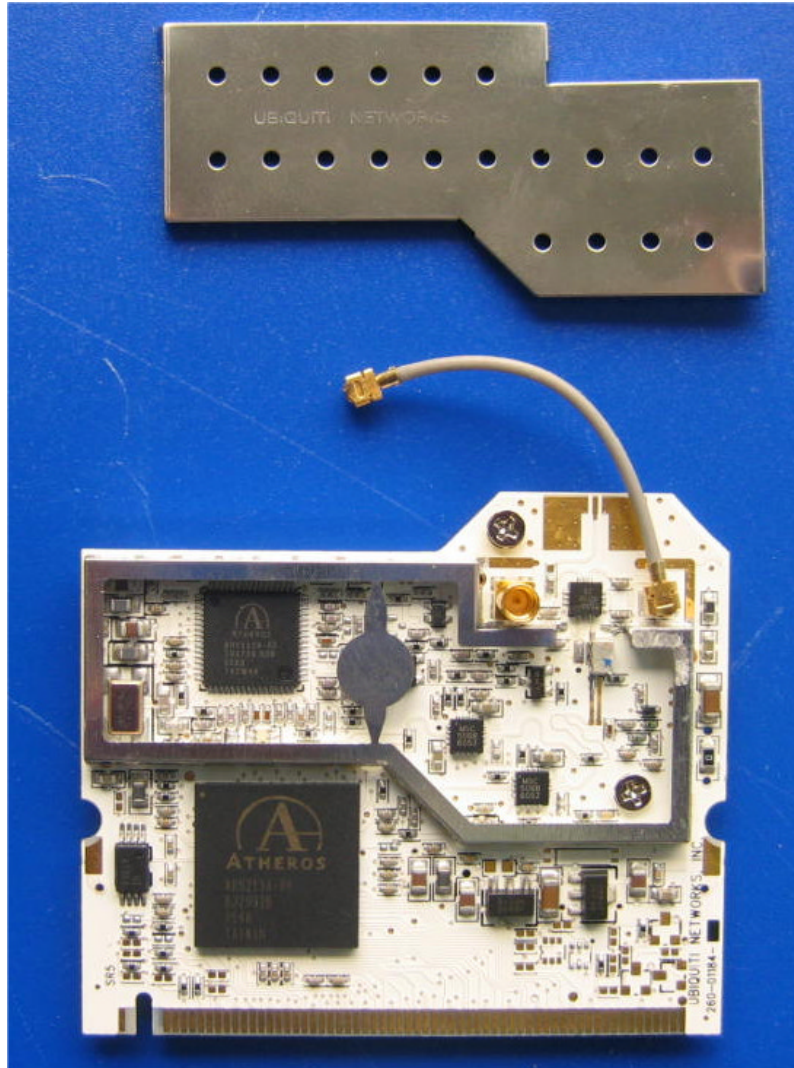
Photograph No.15
ODU main PCB with RF card removed



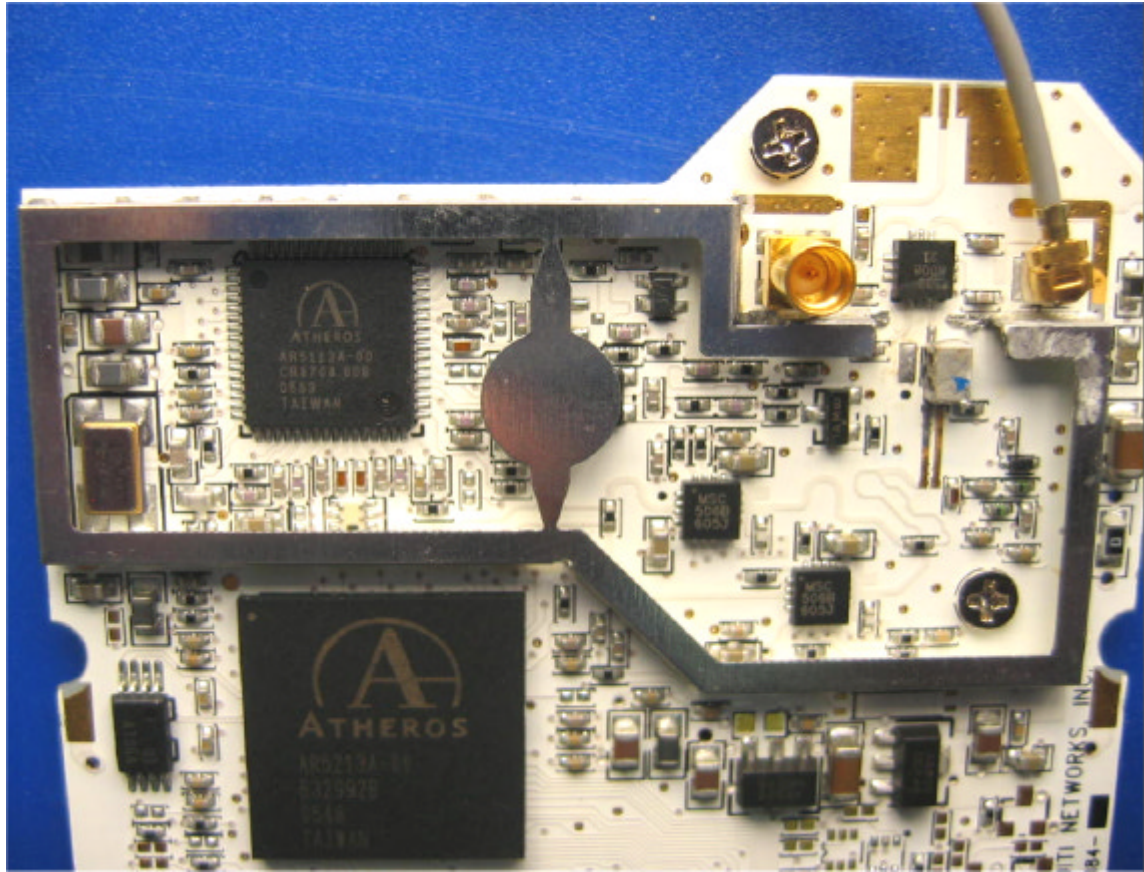
Photograph No.16
RF card front view



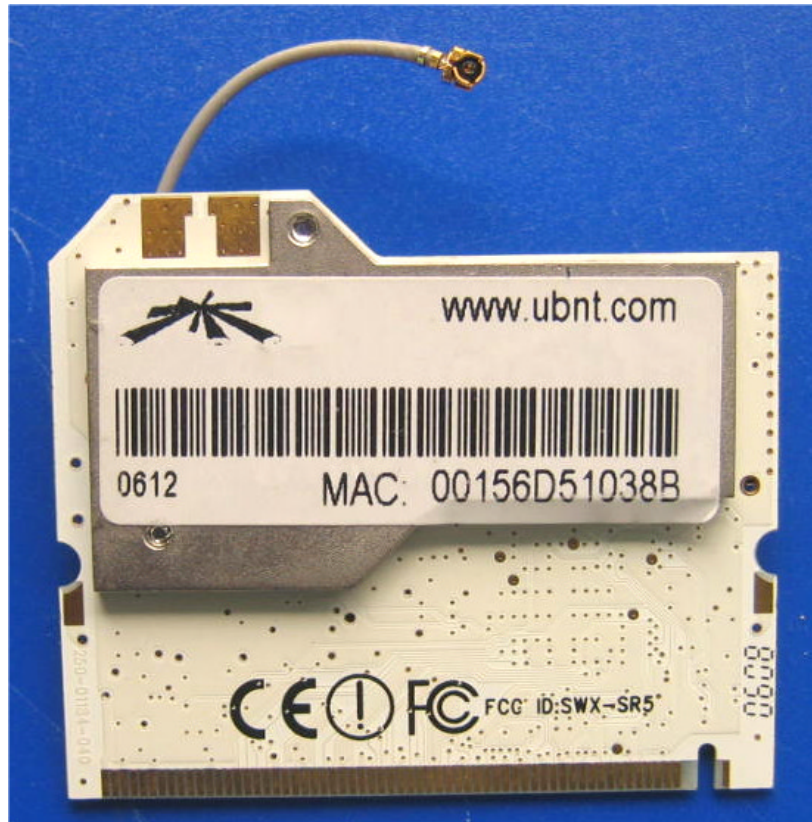
Photograph No.17
RF card with shield removed



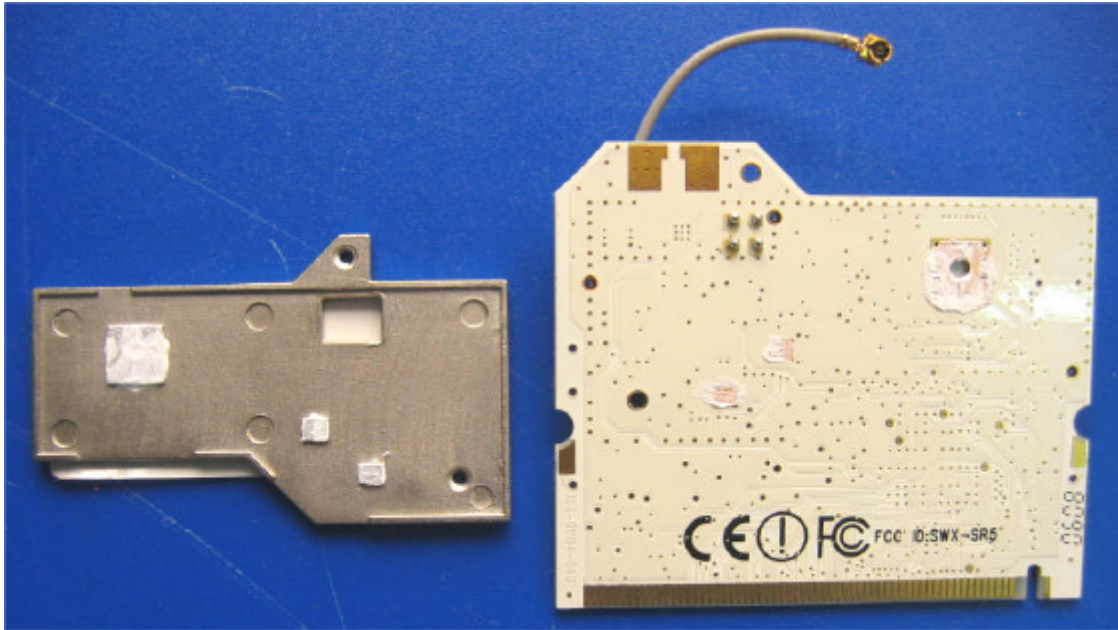
Photograph No.18
RF card components underneath shield



Photograph No.19
RF card second side view



Photograph No.20
RF card with shield removed view



Photograph No.21
RF PCB second side view

