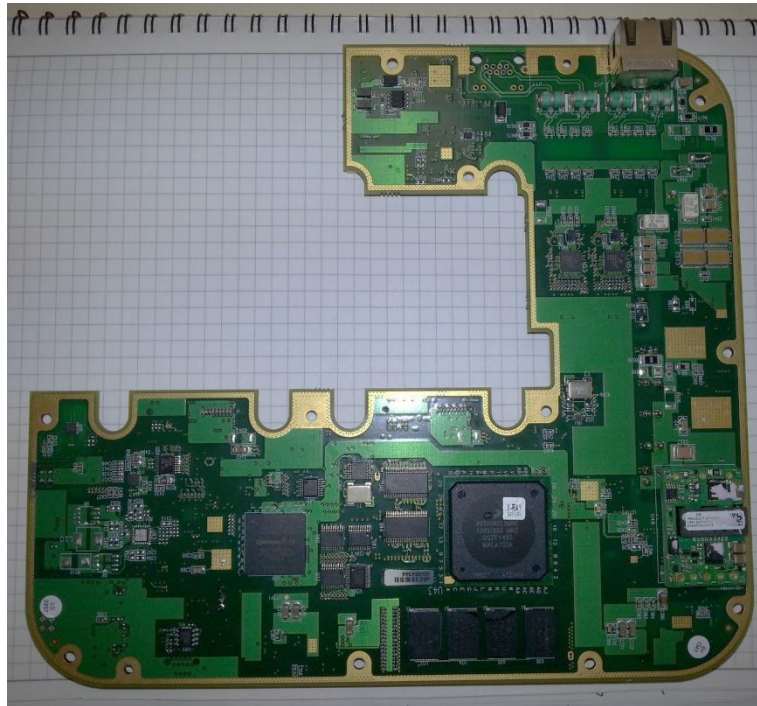


# INTERNAL PHOTOGRAPHS

---



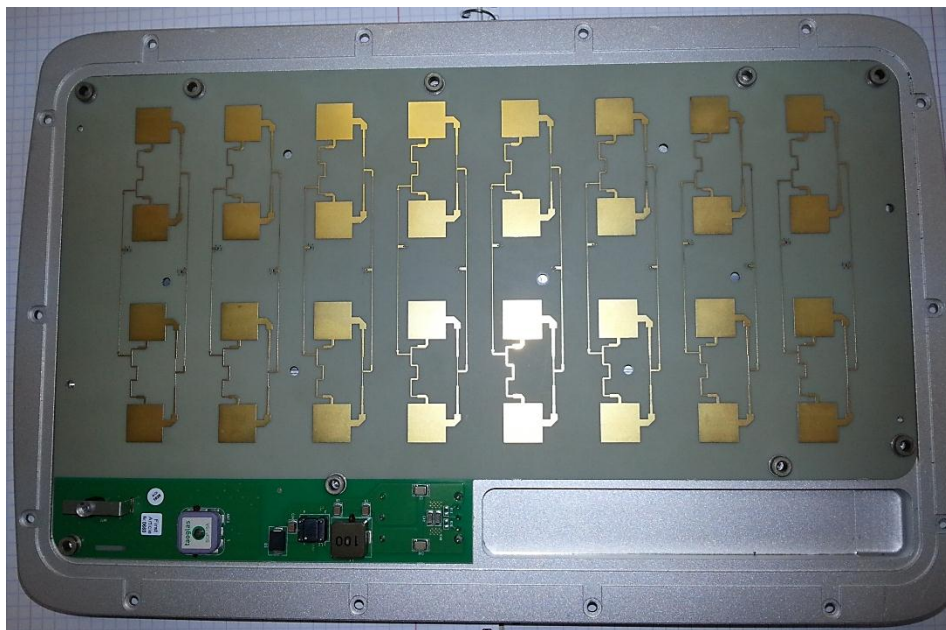
**Photo #1: General View of Digital & RF PCBs**



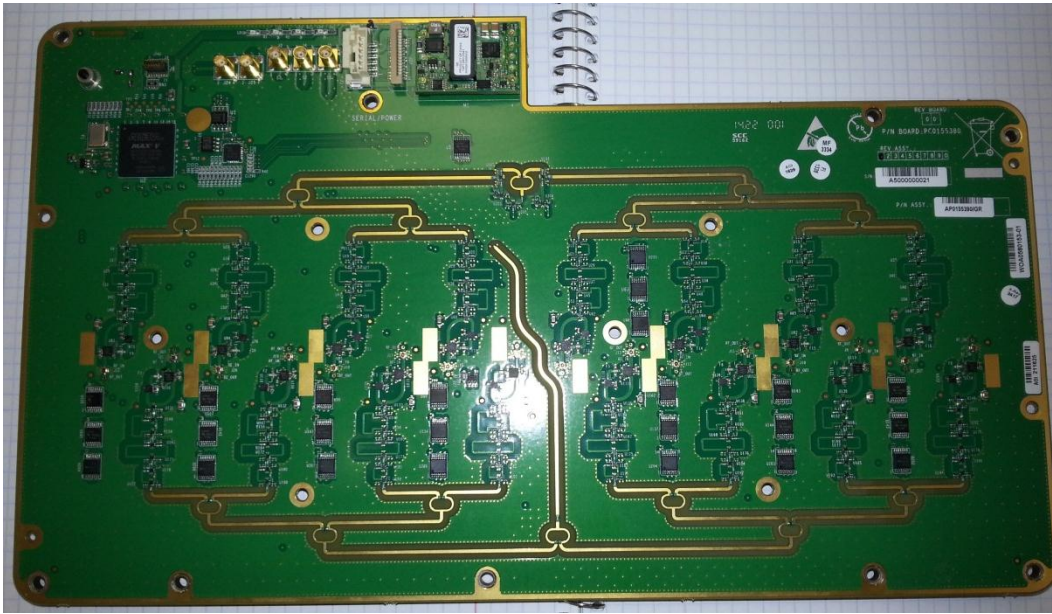
**Photo #2: Digital PCB Print Side**



**Photo #3: RF Module Print Side**



**Photo #4: Smart Antenna PCB Front (Radiating Patches)**



**Photo #5: Smart Antenna PCB Rear**