

Fall Management System M310 Fall Monitor Setup & User Guide



For Evaluation Purposes

Copyright Information

All content herein is the property of STANLEY Healthcare, its Affiliates, or their content suppliers and is protected by United States and international copyright laws. The compilation of all content is likewise the exclusive property of STANLEY Healthcare (or the Affiliate identified in any copyright notice) and is protected by United States and international copyright laws.

The trademarks, service marks and logos (the ‘Trademarks’) used and displayed in this publication are registered and unregistered Trademarks of STANLEY Healthcare, its Affiliates and others. Nothing herein should be construed as granting, by implication, estoppel or otherwise, any license or right to use any Trademark displayed herein without the prior consent of the Trademark owner. STANLEY and the STANLEY design are two of the trademarks owned by STANLEY Healthcare and/or its Affiliates (“STANLEY Trademarks”). STANLEY Trademarks may not be used in connection with any product or service that is not manufactured by or under license from STANLEY Healthcare or its appropriate Affiliate.

Important Recommendation

STANLEY Healthcare’s systems are designed to assist staff in providing a high degree of safety for people and assets and therefore should be used as a component of a comprehensive safety program of policies, procedures, and processes. As with every safety system, STANLEY Healthcare highly recommends regular system operational checks to verify functional integrity.

There are no known issues with the usage of this equipment in association with other investigations or treatments at the facility.

Cautions and Warnings

▲ CAUTION ▲

FAILURE TO HEED THE FOLLOWING CAUTIONS COULD RESULT IN HARM TO YOUR SYSTEM OR CAUSE IT TO FUNCTION IMPROPERLY, INTERMITTENTLY, OR NOT AT ALL.

- Use the M310 Fall Monitor only with approved accessories.
- Remove batteries when the Monitor is not in use to avoid battery power loss.
- Use care when connecting the Sensormat® pads. Gently remove or connect cords. Pulling on cords may damage them and/or result in system failure.

⚠ WARNING ⚠

FAILURE TO HEED THE FOLLOWING WARNINGS COULD RESULT IN INJURY TO OR THE DEATH OF PERSONS IN YOUR CARE.

- A low battery condition in the Monitor is indicated by the Low Battery indicator flashing YELLOW once every 3 seconds. Immediately change the monitor's batteries.
- Test the M310 Fall Monitor and Sensormat pad before each use and inspect the cords and pads for signs of damage. Immediately replace any components with signs of wear or damage.
- Sensormats may not be effective with air type bed mattresses or air type chair cushion pads; test before using.
- Do not place the monitor within 1 ft. (0.3m) of and facing the resident. Placing the Monitor on a wheelchair back is acceptable as long as the monitor is facing away from the resident.
- The M310 Fall Monitor is only one part of your facility's fall management program. The M310 Fall Monitor is not a substitute for proper nursing care or routine visual monitoring by caregivers. The effectiveness of the M310 Fall Monitor relies entirely on an immediate response by the caregiver to the M310 Fall Monitor system alarm.
- The M310 Fall Monitor system will not stop a person from leaving a bed or chair. It is intended only to alert a caregiver that a patient or resident may need assistance. Other interventions may be required.
- Keep the Sensormat pad flat at all times. Folding the pad may damage it. Do not use the pad if it has been folded.
- Do not immerse the Sensormat pads in liquids. The pad will not operate properly if the pad is exposed to excessive liquids. If the pad is immersed in liquid, discard it immediately.
- Operators of this equipment must be familiar with the functions and usage as described in this manual, and must be properly trained in the resident care policies and procedures of the facility.
- Any modification of this equipment is not allowed, voids all warranties, and may result in injury to or death of persons in your care.

CAUTION

**RISK OF EXPLOSION IF BATTERY IS REPLACED BY AN INCORRECT TYPE.
DISPOSE OF USED BATTERIES ACCORDING TO THE INSTRUCTIONS.**

ATTENTION

**RISQUE D'EXPLOSION SI LA PILE EST REMPLACÉE PAR UN TYPE INCORRECT.
SE DÉBARRASSER DES PILES USAGÉES SELON LES INSTRUCTIONS.**

Contents

- Copyright Information ii
- Important Recommendation ii
- Cautions and Warnings..... ii
- Image of components to go here vi
- Introduction..... 1**
 - Check Your Shipment 1
 - Other Components Sold Separately 1
- General Overview 2**
- Hardware Features 3**
 - Speaker Opening 4
 - Reset Button 4
 - Status Indicators 4
 - Wheelchair Mounting Clips 5
 - Wall Mounting Bracket 5
 - Battery Cover 5
 - Settings 5
 - Power Supply Connector 6
 - Nurse Call Cable Connector 6
 - Sensormat Pad Connectors..... 6
 - Additional Features 6
- Alerts and Status Indicators..... 6**
 - Reset Button Red LED 6
 - Reset Button Green LED 6
 - Yellow Status Indicator Icons..... 7
- Audible Alerts..... 7**
 - Pad Exit Alarms 7
 - Trouble Alarms..... 7
 - Confirmation Tones..... 7
- Monitor Setup 8**
 - Pad Exit Alarm Tone Adjustments..... 8

Custom Pad Exit Alarms	8
DIP Switch Functions.....	9
Hold Mode.....	9
Arming the Monitor	10
Batteries and External Power	10
Replacing Monitor Batteries	10
External Power.....	11
Using Sensormat Pads	11
On a Bed.....	11
On a Chair.....	12
Testing the Sensormat Pad	12
Changing the Sensormat Pad.....	13
Monitor Mounting/Installation Options	14
Wall Mounting	14
Strain Relief	14
Chair or Bed Footboard Mounting	15
Interfacing with a Nurse Call System	15
Nurse Call Alarms.....	17
Summary of Audible Alerts and Tones	18
Maintenance	19
System Specifications	20
Regulatory Compliance	21
Warranty Information	23

Image of components to go here

Introduction

The STANLEY Healthcare M310 Fall Management System uses a pressure-sensitive pad to detect the presence of a patient/resident, and a monitor to notify facility staff in the event of premature departure from a bed or chair.

Check Your Shipment

The M310 Fall Monitor package includes:

- 1 – Monitor (FM-3100) with Wall Mounting Bracket, bed/wheelchair clip, and built-in rubber bumper
- 1 – Wall Mounting Bracket Kit (Part#???) , including:
 - 1 – Wall Mounting Bracket (WMB-1000)
 - 6 – Dual-Lock® 250 Fastener strips (2" x ¾" each) (Part#???)
 - 4 – Mounting Screws with Plastic Anchors (Part#???)
- 1 – Large Wire Clip (Part#???)
- 1 – Bed/Chair Mounting Clip (Part#???)
- 3 – 3V CR123A Batteries (not rechargeable) (Part#???)
- This document (0980-165-000)

Other Components Sold Separately

- Sensormat® pads – available in the following types:
 - Chair 14-day (Part#???) , Chair 180-day (Part#???) , Bed 14-day (Part#???) , Bed 180-day (Part#???)
- Additional Wall Mount Bracket Kits (Part#???)
- Additional Wire Clips (BMB-1000)
- Nurse Call Cables (Part#???) - grey, 8' long, ¼ mono jacks
- Toilet pads (Part#???)
- Floor pads (Part#???)
- Seatbelt pad (Part#???)
- Remote call button with Y-splitter (Part#???)

General Overview

The M310 Fall Management System consists of pressure-sensitive Sensormat pads which detect the presence of a patient/resident, and a monitor which provides staff with alert and alarm information.

The monitor provides two types of audible alerts, Pad Exit Alarm and Trouble Alarm, and two types of operational Confirmation Tones, positive or negative.

If the patient/resident exits the pad for longer than a pre-selected number of seconds (0, 2, or 4), the monitor provides visual and auditory alarms to alert staff that the patient/resident may need immediate assistance.

If a technical problem prevents the pad from monitoring (e.g., pad or nurse cable disconnect, low battery condition, etc.), the monitor provides visual and audible alerts to notify staff that the patient/resident is no longer being monitored.

If a Nurse Call system is connected, alerts can be sent to the Nurse Call station. The staff member, having been alerted that a patient/resident is exiting the bed or chair, can counsel the person by intercom (if available), or provide immediate assistance.

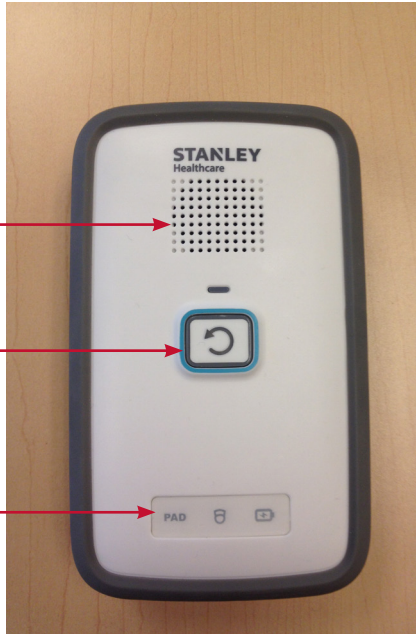
All audible alarms can be cancelled by pressing the Reset button on the front of the monitor.

Hardware Features

Speaker Opening

Reset Button/
Alarm State
Indicator

Pad, Nurse Call
and Power status
Indicators



Mount for
Wheelchair
Small Clip

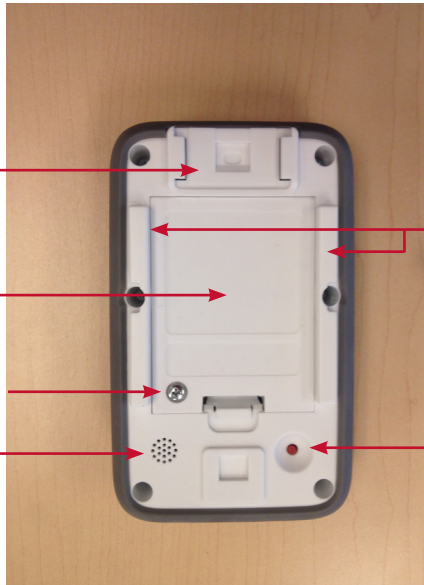
Battery Cover

Battery Cover Screw

Microphone
Opening

Guide Rails for
Wall Mounting
Bracket &
Wheelchair
Large Clip

Pairing Button



Speaker Opening

The speaker opening allows the monitor alarm to be audible.



Reset Button

The reset button is used to display the monitor's status without disrupting the monitoring session, to mute audible alerts, or to put the monitor into Hold Mode. Hold Mode is used to suspend patient monitoring to allow staff to move the patient temporarily (adjust bedding, trip to the toilet, etc.)



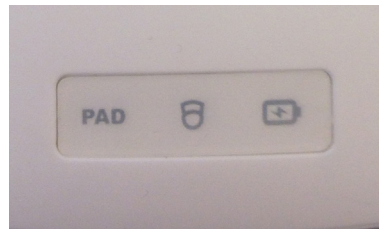
Button press duration variations are as follows:

- A short press is used to display the monitor's status or cancel any audible alarms.
- A long press, more than 3 seconds, is used to place the monitor in Hold Mode for 2 minutes (120 seconds).

Status Indicators

Pad

This LED indicates when a pad is disconnected, or when two pads are being monitored simultaneously. PAD icon flashes, and honk alert sounds every 5 seconds while 2 pads are being monitored.



Nurse Call

Indicates when the monitor is set to remote alert using the Nurse Call system but the cable is unplugged.

Battery

This LED flashes YELLOW on low battery, or steady GREEN with YELLOW flashes when connected to a power supply and batteries are low or not installed.

Wheelchair Mounting Clips

Use the small metal clip to attach the monitor to surfaces up to $\frac{5}{16}$ " thick (e.g., the back of a wheelchair).



Use the large wire clip to attach the monitor to surfaces $\frac{5}{16}$ " to $2\frac{1}{4}$ " thick (e.g., the headboard of a bed).

For more information, see "Monitor Mounting/Installation Options" on page 14.

Wall Mounting Bracket

Use the supplied plastic wall mounting bracket to attach the monitor to a wall with the built-in guide rails.

Battery Cover

The battery cover is used to protect the batteries and the settings area (alert volume, tones, etc.)

Check that the battery cover retention screw is tightened to avoid batteries accidentally falling out if the monitor is dropped, and to reduce the possibility of battery theft.

For more information, see "Replacing Monitor Batteries" on page 10.

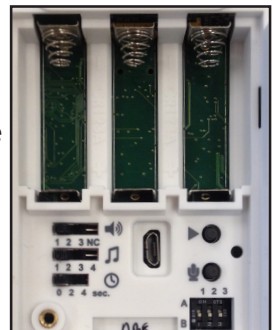


Settings

Behind the battery cover, there are buttons and switches used to control audible alert selection, volume, and alert delay times.

The play and record buttons, and the microphone are used to record custom audible pre-alerts messages of up to 15 seconds duration, after which the alarm sounds. The hole to the right of the buttons allows visibility for the LED which indicates recording in progress.

DIP switch 1 is used to enable/disable audible alerts. DIP switch 2 is used to select between "Normally Open" and "Normally Closed" Nurse Call systems. DIP switch 3 is not in use.



Power Supply Connector

This is used to connect a 5V power supply.

Nurse Call Cable Connector

This is used to connect a Nurse Call cable.

Sensormat Pad Connectors

These are used to connect 1 or 2 Sensormat pads.

Additional Features

The monitor includes a latex-free rubber bumper around the perimeter to protect the monitor damage by dropping.

Alerts and Status Indicators

LED use during normal conditions is minimized to help extend the monitor's battery life. State changes are triggered by incoming events such as a press on the monitor's Reset button, a change to the Nurse Call jack (plugged or unplugged), low battery condition, etc.

LED alerts are displayed via the Reset button and the status indicator LEDs.

Reset Button Red LED

The Reset button flashes red to indicate that an unexpected pad exit has occurred. The alarm LED is easily seen from a distance of 4 meters in normal facility lighting conditions unless direct sunlight is falling on the monitor.



Reset Button Green LED

The Reset button flashes green while it is being armed, when it is in Hold mode, and once when an alarm is canceled.



Yellow Status Indicator Icons

Yellow indicates equipment trouble, including low battery or supervision alarms when communication is lost. Yellow accompanied by an alarm indicates a problem that prevents the monitoring of a patient/resident on the pad.

Audible Alerts

The monitor provides three types of audible alerts: Pad Exit Alarm, Trouble Alarm, and Confirmation Tones.

Pad Exit Alarms

Pad Exit Alarms are sounded when a patient/resident ceases to be monitored by the Sensormat pad.

There are 4 alarm tone sequences associated with the red alarm LED flashes. The choice of alarm or trouble tone depends on the TONE switch setting. Confirmation tones and alert tones are not affected by these settings.

Trouble Alarms

Trouble alarms are indicated by a negative tone when system problems are detected. Trouble Alarm tones are sounded once every 5 seconds and associated with the status LED (yellow flashes):

- One sound (low) in a sequence of 3 beeps
- Two sounds (low high low high) in a sequence of 4 beeps
- Two sounds (high low high) in a sequence of 3 beeps

Confirmation Tones

Confirmation Tones (positive or negative) are sounded to verify successful operations. These tones are much quieter than the Alarm tone and cannot be cancelled:

- A positive confirmation tone indicates a successful association of monitor and pad, or on pad monitoring is arming.

Monitor Setup

Pad Exit Alarm Tone Adjustments

Loosen the battery cover screw and remove the battery cover to reveal the settings switches and buttons.

Volume (Speaker icon)



There are 4 Volume settings for the Pad Exit alarm and Trouble Alarm tones:

- 1 - Low volume
- 2 - Medium volume
- 3 - High volume
- NC (Nurse Call) - If a Nurse Call jack is plugged in and this setting is selected, the local alarm sound is suppressed completely, and the alarm is sent to the Nurse Call station.

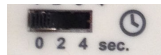
Tone Selection (Music Notes icon)



There are 4 different Alert tones which can be selected:

- 1 - One sound (low) in a sequence of 3 beeps, pause, 2 beeps
- 2 - Two sounds (low high low high) in a sequence of 4 beeps, pause, 2 beeps
- 3 - Two sounds (low high low) in a sequence of 3 beeps, pause, 2 beeps
- 4 - Two sounds (high low high) in a sequence of 3 beeps, pause, 2 beeps

Delay (Stopwatch icon)



There are 3 delay settings before the alarm is sounds:

- 0 (0 - 0.75 seconds)
- 2 (2 - 2.75 seconds)
- 4 (4 - 4.75 seconds)

Custom Pad Exit Alarms

1. The Play and Record buttons and a microphone are found to the right of the Tone, Volume, and Delay switches.
2. Press and hold the Record button, beside the icon that looks like a microphone.

3. A red LED will flash while the button is depressed. This indicates that the device is recording.
4. Speak in a clear voice towards the microphone opening (located at the bottom left of the monitor back) and release the microphone button when finished.
The red LED will stop flashing.
5. Press the button beside the Play icon to hear the recorded alert.
With the right settings, the recorded message will play before the Bed Exit Alarm.

Note: Custom audible alerts can be recorded while a Sensormat pad is connected to the monitor, but they CANNOT be recorded while a patient/resident is being actively monitored.

Note: Recorded message length can be up to 15sec. Following 15sec of message recording a positive beep will sound to indicate the recording time is over.

DIP Switch Functions

1A	Don't play the recorded message in case of alarm
1B	Play the recorded message in case of alarm
2A	"Normally Open" wired Nurse Call system
2B	"Normally Closed" wired Nurse Call system

Hold Mode

Hold Mode is used to allow the caregiver 2 minutes to remove a patient/resident from a monitored pad without triggering any alarms.

1. While the patient/resident is being monitored on the pad, press and hold the Reset button on the monitor for 3 seconds or longer.
2. A 2-minute timer is set. The patient/resident can now be removed from the pad without triggering an alarm.
3. The reset button flashes green once per second for 115 seconds, then flashes rapidly for the final 5 seconds, at which point a confirmation tone sounds to indicate that Hold Mode is over.

4. If more time is needed, press and hold the Reset button for 3 seconds or longer again. A new 2 minute period is added to the timer.
5. When the timer runs out, the monitor resumes normal operation.

Arming the Monitor

Once connected to the pad, and with no patient/resident on the pad, the monitor waits for a patient/resident to get on the pad.

When a patient/resident has been detected to be on the pad the Reset button flashes green for 3 seconds before arming. The arming is indicated by a positive confirmation tone plus a long green flash.

Any exit from the pad during the first 3 second flash period cancels the arming process.

After arming, the monitor will sound a Pad Exit alarm on a pad exit.

Batteries and External Power

The monitor's batteries will last at least 365 days (1 year) while monitoring a person on a pad.

Note: We strongly recommend that you remove the batteries if the monitor will not be used for an extended length of time.

The Battery Status Indicator LED flashes a yellow warning (with a confirmation tone) when the monitor batteries are low (approximately within 7 days of depletion). These sequences repeat until the batteries are replaced.

Replacing Monitor Batteries

To Remove Batteries

1. Remove the battery cover screw, and the cover.
2. Remove the batteries, ensuring that you remove the positive end of each battery first.

Note: Dispose of used batteries according to your local environmental laws and guidelines.

To Insert Batteries

1. Insert the batteries into the battery compartment, by pressing the negative end of each battery into the corresponding spring, then sliding the positive end into the contact.
The monitor immediately performs a self-test. The LEDs flash in all colors and the speaker sounds.
2. Replace the battery cover, and insert and tighten the cover screw.

External Power

External power may be used but the batteries must be installed for back-up power. When external power is used and batteries are installed power is drawn only from the external power.

The external power adaptor used must supply 5V/1A only. Currently, model FRM015-505-x, (sold by STANLEY) is the only approved power supply for the M310.

Using Sensormat Pads

Locate the Sensormat pad either on a bed or chair, directly underneath the patient/resident.

Either 14-day or 6-month (180-day) pads can be deployed with the monitor.

Note: Pads should be replaced on or before their warranty period expiry date (indicated on pad).

Sensormat pads are designed to sense body-weight distributed over an area.

Pad testing should be done either by sitting or lying on the pad, or by pressing down firmly with the palm of your hand.

For more information on pad testing see "Testing the Sensormat Pad" on page 12.

On a Bed

Place the Sensormat pad across the width of the bed, ON TOP OF THE MATTRESS.

A top sheet and/or incontinence pad may be placed above the Sensormat pad.

The preferred pad location is directly under the patient/resident's buttocks three to five inches below the bend in the mattress when the head of the bed is elevated.

Effective operation of the Sensormat pad in the alternative location, behind the patient/resident's back, is dependent upon their weight and the articulation angle of the bed.

Sensormats may not be effective with air type bed mattresses. Test before using. See "Testing the Sensormat Pad" on page 12.

The use of anti-skid strips to secure the Sensormat pad to the mattress is optional.

On a Chair

Place the Sensormat pad across the width of the chair or wheelchair seat. For best sensitivity, place the Sensormat pad above any other pads.

An incontinence pad may be placed above the Sensormat pad.

Adjust the position so that it fits directly under the patient/resident's buttocks. The most favorable location is toward the rear of the seat, close to the chair back.

Sensormats may not be effective with air type chair cushion pads. Test before using. For more information, see "Testing the Sensormat Pad" on page 12.

The use of anti-skid strips to secure the Sensormat pad to the seat of the chair is optional.

Note: Once the patient/resident sits on the pad, there is a 3 second delay, before the monitor arms, allowing time for the patient/resident to shift around slightly until a comfortable position is achieved.

Testing the Sensormat Pad

Test the Sensormat Pad before first use, each time the system is put into use, and daily thereafter, as follows:

1. Plug the pad into the monitor.
2. Gather the equipment together: monitor and Sensormat pad.
3. Activate the monitor.

4. Press the monitor's Reset Button to confirm that the status LED flashes green, and ONLY Green.

CAUTION: If a yellow flash is seen, diagnose the problem using the LED and Audible Tones table on page 7.

5. Replace monitor batteries if a low battery is indicated.
6. Apply FULL and FIRM PALM pressure with your hand to the Pad for more than 3 seconds.
7. The Monitor should flash its Status LED green for 3 seconds and then sound a low-high confirmation tone followed by a long green flash.
8. Release hand pressure. After a delay up to 4.75 seconds (depending on configured delay settings), the Monitor should generate a Pad Exit alarm, continuously flashing the Alarm LED red and, unless a Nurse Call system is connected and the volume is set to NC, sounding the Pad Exit Alarm.
9. Press the Reset button on the Monitor to silence the alarm.
10. If the Monitor is used with a Nurse Call system, verify that an alarm was triggered on that system.
11. If the Monitor did not signal a Pad Exit alarm properly, try checking all connections, then re-connect the pad and repeat all the above tests.
12. If the Pad Exit alarm still does not sound, DO NOT place the pad or the monitor into service.

Changing the Sensormat Pad

To change the Sensormat pad while monitoring a patient:

1. Put the monitor in Hold Mode, and remove the patient/resident from the bed/chair. (See "Hold Mode" on page 9.)
2. Remove the old pad from the bed or chair.
3. Unplug the old pad from the monitor.
4. Replace the pad.
5. Plug in the new pad.
6. Verify the proper installation by following the instructions on the pad.
7. Test the new pad's functionality.

Monitor Mounting/Installation Options

The monitor may be mounted on a chair, a wall, a bed footboard, or a wheelchair.

CAUTION: Do not place the monitor within 1 ft. (0.3 meters) of and facing the patient/resident. However, placing the monitor on a wheelchair back is acceptable as long as the monitor is facing away from the patient/resident.

Wall Mounting

To mount the monitor on a wall, you will need a Wall Mount Bracket Kit (0903-019). The mounting bracket should be attached to the wall with the included screws or Dual-Lock® fastener.

If you are using a Nurse Call system, you will also need a ¼" jack connected Nurse Call Cable. A grey 8 ft long ¼" jack to ¼" jack cable is available separately from Stanley Healthcare (0707-569).

1. Attach the Wall Mount Bracket to a vertical surface using the provided screws, or Dual-Lock fasteners for easier removal.
2. Install the bracket on the wall when monitoring persons in bed.
3. To attach the monitor to the bracket, slide the monitor down into the bracket from the top until the release button clicks.
4. Insert the Nurse Call cable jack into the Nurse Call receptacle on the monitor. Plug the other end into the installed Nurse Call system receptacle.

Strain Relief

Two strain relief mechanisms are built into the wall mounting bracket:



These are designed to help prevent cables from disconnection or breakage.

The left side is for the Nurse Call and power cables.

- It is designed to support both the power cord (diameter TBD) and Nurse Call cable (0.2") at the same time
- If only the power cord is used, 2-3 loops should be made to keep the cord securely in place
- If only the Nurse Call cable is used, one loop is enough

The right side is for one or both pad cables.

- It is designed to support two corded pad cables at the same time
- If only one pad cable is used, 2-3 loops should be made to keep the cable securely in place

Install power cord and Nurse Call and pad cables as illustrated.

Chair or Bed Footboard Mounting

To mount the monitor on a chair or on a bed footboard that are more than 5/16" thick, you will need a large wire clip (0120-123).

1. Slide the wire clip into the slots on the back of the monitor.
2. Use the clip to attach the monitor securely to the back of the chair, in a place that the patient/resident cannot easily reach.
3. Ensure that the monitor is clipped to the outside of the chair to reduce any discomfort for the patient/resident (the monitor's speaker will be facing away from the patient/resident as well).

Interfacing with a Nurse Call System

The monitor can be used to trigger a Nurse Call system that works with call button circuits that are either Normally Open (closing when the call button is depressed), or Normally Closed (opening when the call button is depressed).

If an active Nurse Call system is connected, a positive confirmation tone will sound. The Nurse Call icon will flash yellow when the Nurse Call cable is being connected or disconnected, when the monitor is set to N.C. volume setting.

The monitor accepts a common ¼" mono plug that can be wired to a Nurse Call system. The monitor will sound a beep if a Nurse Call jack is inserted or removed while monitoring a patient/resident on the pad.

If the Nurse Call jack needs to be adjusted while a patient/resident is on the pad use the "Hold Mode" to allow this. When installing a Nurse Call jack, we recommend using the wall mount bracket in the manner shown, which provides cable restraint to help prevent accidental unplugging of the jack. In order to provide proper cable restraint, the cable (up to 0.25" in diameter) should be inserted before the monitor is placed on the wall mount bracket. Any Nurse Call cable must be located in such a way as to not pose a risk of strangulation.

If your Nurse Call system does not provide a compatible input or if you want to wire a push button cord in parallel with the monitor, contact your biomedical department to obtain the appropriate adapter. The monitor does not have an input to allow a push button to be wired in parallel.

If requesting information on interfacing the monitor to a Nurse Call system, please have the following information available:

- The brand of your Nurse Call system
- A description of the system's call cord or pillow speaker, including the type of plug and number of pins in the plug
- Whether your Nurse Call system is Normally Open or Normally Closed

If this information is not available, you may still contact us for assistance, and we will be glad to help you.

Nurse Call Alarms

The Nurse Call jack can be used in all 3 Alarm volume settings (1, 2, 3, and NC). When a Nurse Call jack is plugged in and the monitor's alarm volume is set to "NC", alarms are muted on the monitor. The "NC" volume setting is treated as a 1 setting if no Nurse Call jack is connected.

Note: An alarm sent to the Nurse Call system cannot be cancelled from the monitor alone. After dealing with the patient/resident according to your care policy, the alarm must first be cancelled on the monitor, and then at the Nurse Call system. Refer to the Nurse Call system documentation for details on cancelling alarms at the Nurse Call station.

Whether or not the volume setting is "NC", the monitor sounds a beep when the Nurse Call jack is inserted or removed while the patient/resident is on the pad.

For more information on disabling the monitor, see "Hold Mode" on page 9.

Summary of Audible Alerts and Tones

LED	Tone	Description
Reset Button LED – Alarm (Red)		
Short flash every 0.6 seconds	Pad Exit Alarm	patient/resident has left the bed or chair.
One long flash	High-Low Confirm	Monitor placed into Hold Mode
Reset Button LED – Status (Green) – Normal Operation		
Long flash after Reset button press, or long flash once per minute	No	Pad is communicating with monitor and a patient/resident is on the pad
Short flash after Reset button press	No	Pad is communicating with the monitor, but no one is on the pad
5 seconds rapid flashing following an OFF to ON pad status change, then one long flash	No	Rapid flashes indicate monitor is about to start monitoring a patient/resident on a pad. A pad exit during this period does not trigger an alarm. Long flash indicates monitor is now armed. A pad exit triggers an alarm.
Two flashes every few seconds and, after 1 minute, 1 flash every few seconds for 1 minute	No	Monitor placed in Hold Mode to allow patient/resident positioning or removal
Status LED (Yellow) – Status, Trouble, or Warning Conditions		
Five short flashes repeated every 2.4 seconds	Trouble Alarm	Supervision failure Monitor battery too low to operate Equipment error
Three short flashes, then 1 long flash every 2.4 seconds	Trouble Alarm	Nurse Call jack inserted or removed while monitoring patient/resident on pad without using Hold Mode (page 9). Press the Reset button to mute the Alarm for 90 seconds, or reverse the jack change to stop the Alarm.
One short flash per minute	2 Low	Monitor low battery.
Continuous	No	Failed monitor power-up self-test or monitor battery dying.
Three short flashes, the 2 long flashes every 2.4 seconds	Trouble Alarm	Cordless pad disconnected
Two short flashes per minute	2 Low	Cordless pad low battery

Maintenance

The monitor and the Sensormat pad may be cleaned with a damp cloth or sponge using mild disinfectants. Never use alcohol, acidic or harsh petroleum-based cleaners.

The monitor tolerates all EtO (ethylene oxide) gas sterilization processes below 70°C. Other types of gas sterilization are NOT to be used on the monitor (e.g., formaldehyde, chlorine or hydrogen peroxide). Do NOT sterilize the Sensormat pad.

To ensure maximum performance, follow these guidelines:

- Replace the Sensormat mat every 14 or 180 days (six months), depending on the pad type.
- If maintenance or opening of the monitor is required, it should be performed in a static-free environment by qualified personnel.
- Replace the batteries in the monitor upon low battery signal.
- Replace the batteries in the cordless pad transmitter upon low battery signal.
- Perform regular checks on the monitors (status and connections).

Note: The Sensormat Pad is for single patient/resident use only.

System Specifications

Monitor Specifications	
Part Number	FM-3100
Battery: Type: Typical Life: Low Battery:	Three (3) CR123A Alkaline 3V, replaceable 1 year with typical use 7 days warning
Dimensions (W x H x D)	Approx. 8.5 x 14.8 x 4.0 cm (3.4 x 5.70 x 1.65 in)
Weight	Approx. 275 g or 9.70 oz (with batteries) 175 g or 6.17 oz (without batteries)
Operating Temp.	0 - 50 C
Relative Humidity	5 - 90 % RH (non-condensing)
Mounting	Wall, chair or bed footboard mountable Built-in clip - objects up to 5/16" thick Optional large wire clip - objects from 5/16" to 2¼" thick
Audible Indicators	"LOW " Minimum Level = 68dBA - at 1 foot from monitor "HI" Maximum Level = 96dBA - at 1 foot from monitor
LED Indicators	Alarm LED: Red - Pad exit from an on-pad monitoring condition. Status LED: Yellow - Equipment trouble alerts Green - Monitoring confirmation

Sensormat Pad Specifications	
Part Numbers	ASDF: Tal to provide new numbers.
Dimensions (W x H x D)	Chair pads: 42.1 x 0.7 x 34.8 cm (16 x 0.3 x 13.7 in) Bed pads: 103.2 x 0.7 x 29.4 cm (40.7 x 0.7 x 11.6 in)
Weight	Chair pads: 91 g (3.2 oz) Bed pads : 205 g (7.2 oz)
Operating Temp.	10 - 40 C
Relative Humidity	5 - 90 % RH (non-condensing), IP22
Mounting	Placed on chair or bed as per usage instructions on pad

Regulatory Compliance

FCC/Industry Canada

This device has been tested and found to comply with the limits for a Class B digital device, pursuant to Part 15 of the FCC Rules. These limits are designed to provide reasonable protection against harmful interference in residential installations. This equipment generates uses and can radiate radio frequency energy and, if not installed and used in accordance with the instructions, may cause harmful interference to radio and television reception.

However, there is no guarantee that interference will not occur in a particular installation. If this device does cause such interference, which can be verified by turning the device off and on, the user is encouraged to eliminate the interference by one or more of the following measures:

- Re-orient or re-locate the receiving antenna.
- Increase the distance between the device and the receiver.
- Connect the device to an outlet on a circuit different from the one that supplies power to the receiver.
- Consult the dealer or an experienced radio/TV technician.

WARNING: Changes or modifications to this unit not expressly approved by the party responsible for compliance could void the user's authority to operate the equipment.

To comply with FCC Section 1.310 for human exposure to radio frequency electromagnetic fields, implement the following instruction:

- A distance of at least 1.0 cm between the equipment and all persons should be maintained during the operation of the equipment.

This device complies with Part 15 of the FCC Rules and Industry Canada licence-exempt RSS standard(s). Operation is subject to the following two conditions: (1) this device may not cause interference, and (2) this device must accept any interference, including interference that may cause undesired operation of the device.

Le présent appareil est conforme aux FCC Part 15 et CNR d'Industrie Canada applicables aux appareils radio exempts de licence.

L'exploitation est autorisée aux deux conditions suivantes : (1) l'appareil ne doit pas produire de brouillage, et (2) l'utilisateur de

l'appareil doit accepter tout brouillage radioélectrique subi, même si le brouillage est susceptible d'en compromettre le fonctionnement.

RoHS

RoHS Directive – 2002/95/EC

Warranty Information

LIMITED WARRANTY: BED-CHECK® CONTROL UNITS

1. WARRANTOR:

This Limited Warranty is given by STANLEY Healthcare, 130 Turner Street, Waltham, MA 02453.

2. DURATION:

This Limited Warranty begins on the date the product is delivered to the purchaser and continues for a period of two years (new units) or one year (refurbished units).

3. TO WHOM THIS LIMITED WARRANTY IS GIVEN:

This Limited Warranty is given to the original purchaser of Bed-Check's products only.

4. PRODUCTS COVERED:

This Limited Warranty covers all Bed-Check Control Units. (i.e., Bed-Check Cordless, Model Vr, Classic-Check, Chair-Check II, and Basic-Check)

5. WHAT IS COVERED UNDER THIS LIMITED WARRANTY:

Defects in material and workmanship which occur within the defined duration of this limited warranty.

Warrantor makes no other warranties expressed or implied, including without limitation, warrantor makes no warranty as to merchantability or fitness for a particular purpose.

6. WHAT IS NOT COVERED UNDER THIS LIMITED WARRANTY:

a) ANY INCIDENTAL, INDIRECT, OR CONSEQUENTIAL LOSS, DAMAGE, OR EXPENSE THAT MAY RESULT FROM ANY DEFECT, FAILURE, OR MALFUNCTION OF THE CONTROL UNITS.

b) ANY INCIDENTAL, INDIRECT, OR CONSEQUENTIAL LOSS, DAMAGE, OR EXPENSE THAT MAY RESULT FROM USE OF THE CONTROL UNITS WITH ANOTHER MANUFACTURER'S PRESSURE SENSITIVE MAT, SENSING DEVICE, OR OTHER FALL PREVENTION PRODUCT.

NOTE: SOME STATES DO NOT ALLOW THE EXCLUSION OR LIMITATION OF INCIDENTAL OR CONSEQUENTIAL DAMAGES, SO THE ABOVE LIMITATIONS OR EXCLUSIONS MAY NOT APPLY TO YOU.

c) Any defects or damage to the Control Units that may result from use of the Control Units with another manufacturer's parts, pressure sensitive mat, sensing device, or other fall prevention product.

d) Any failure that results from an accident, purchaser's abuse, neglect or failure to operate the Control Units in accordance with the instructions provided in the owner's manual(s) supplied with the Control Units.

e) Any Control Units which have the serial numbers altered, defaced or removed.

f) Any Control Units which have been altered or modified in any way without the express written consent of Bed-Check.

g) Any Control Units which have been repaired other than by Bed-Check.

7. RESPONSIBILITIES OF WARRANTOR UNDER THIS LIMITED WARRANTY:

a) In the event of a defect, malfunction, or other failure of the product not caused by any misuse or damage to the product while in the possession of purchaser, the warrantor will remedy the failure or defect without charge to the purchaser within a reasonable time. The remedy will consist of repair or replacement of the product, or refund of the purchase price, at the warrantor's option. If the product is no longer available, warrantor will supply purchaser with a comparable product or refund the purchase price at warrantor's option. However, the warrantor will not elect refund unless it is unable to provide replacement, and repair is not commercially practicable and cannot be made within a reasonable time, or unless the purchaser is willing to accept such refund.

b) If this product or one of its component parts contains a defect or malfunction, after a reasonable number of attempts by the warrantor to remedy the defects or malfunctions, the purchaser will be entitled to either a refund or replacement of the product or its component part or parts. Replacement of a component part includes its free installation.

8. RESPONSIBILITIES OF THE PURCHASER UNDER THIS LIMITED WARRANTY:

a) Disinfect the Control Unit, if necessary, so that it is reasonably free from infectious matter.

b) Package the Control Unit with a minimum of two inches of shock absorbent packaging material.

Deliver or ship the Control Unit to:

STANLEY Healthcare, 130 Turner Street, Waltham, MA 02453. Freight costs, if any, must be borne by the purchaser.

c) Use the Control Unit with reasonable care and in accordance with the supplied owner's manual.

THIS LIMITED WARRANTY GIVES YOU SPECIFIC LEGAL RIGHTS AND YOU MAY ALSO HAVE OTHER RIGHTS WHICH VARY FROM STATE TO STATE.

Warranty Information

LIMITED WARRANTY: BED-CHECK® SENSORMATS®

1. WARRANTOR:

This Limited Warranty is given by STANLEY Healthcare, 130 Turner Street, Waltham, MA 02453.

2. DURATION:

This Limited Warranty begins on the date the product is delivered to the purchaser and continues for a period of one year or for the duration of the warranty stated on the Sensormat label from the date first installed, whichever comes first.

3. TO WHOM THIS LIMITED WARRANTY IS GIVEN:

This Limited Warranty is given to the original purchaser of Bed-Check's products only.

4. PRODUCTS COVERED:

This Limited Warranty covers all Bed-Check Sensormats.

5. WHAT IS COVERED UNDER THIS LIMITED WARRANTY:

Defects in material and workmanship which occur within the period described in paragraph 2. Warrantor makes no other warranties expressed or implied, including without limitation, warrantor makes no warranty as to merchantability or fitness for a particular purpose.

6. WHAT IS NOT COVERED UNDER THIS LIMITED WARRANTY:

a) ANY INCIDENTAL, INDIRECT, OR CONSEQUENTIAL LOSS, DAMAGE, OR EXPENSE THAT MAY RESULT FROM ANY DEFECT, FAILURE, OR MALFUNCTION OF THE SENSORMAT ANY INCIDENTAL, INDIRECT, OR CONSEQUENTIAL LOSS, DAMAGE, OR EXPENSE THAT MAY RESULT FROM USE OF THE SENSORMAT WITH ANOTHER MANUFACTURER'S CONTROL UNIT OR OTHER FALL PREVENTION PRODUCT.

NOTE: SOME STATES DO NOT ALLOW THE EXCLUSION OR LIMITATION OF INCIDENTAL OR CONSEQUENTIAL DAMAGES, SO THE ABOVE LIMITATIONS OR EXCLUSIONS MAY NOT APPLY TO YOU.

b) Any defects or damage to the Sensormat that may result from use of the Sensormat with another manufacturer's parts, control unit, or other fall prevention product.

c) Any failure that results from an accident, purchaser's abuse, neglect or failure to operate the Sensormat in accordance with the instructions provided on the Sensormat label.

d) Any Sensormat which has the serial numbers altered, defaced or removed.

e) Any Sensormat which has been altered or modified in any way without the express written consent of Bed-Check.

f) Any Sensormat which has been repaired other than by Bed-Check.

7. RESPONSIBILITIES OF WARRANTOR UNDER THIS LIMITED WARRANTY:

a) In the event of a defect, malfunction, or other failure of the product not caused by any misuse or damage to the product while in the possession of purchaser, the warrantor will remedy the failure or defect without charge to the purchaser within a reasonable time. The remedy will consist of repair or replacement of the product, or refund of the purchase price, at the warrantor's option. If the product is no longer available, warrantor will supply purchaser with a comparable product or refund the purchase price at warrantor's option. However, the warrantor will not elect refund unless it is unable to provide replacement, and repair is not commercially practicable and cannot be made within a reasonable time, or unless the purchaser is willing to accept such refund.

b) If this product or one of its component parts contains a defect or malfunction, after a reasonable number of attempts by the warrantor to remedy the defects or malfunctions, the purchaser will be entitled to either a refund or replacement of the product or its component part or parts. Replacement of a component part includes its free installation.

8. RESPONSIBILITIES OF THE PURCHASER UNDER THIS LIMITED WARRANTY:

a) Disinfect the Sensormat, if necessary, so that it is reasonably free from infectious matter.

b) Package the Sensormat unfolded and in a flat position. Deliver or ship the Sensormat to STANLEY Healthcare, 130 Turner Street, Waltham, MA 02453. Freight costs, if any, must be borne by the purchaser.

c) Use the Sensormat with reasonable care and in accordance with the supplied owner's manual.

THIS LIMITED WARRANTY GIVES YOU SPECIFIC LEGAL RIGHTS AND YOU MAY ALSO HAVE OTHER RIGHTS WHICH VARY FROM STATE TO STATE.

Notes:

www.StanleyHealthcare.com