





**STANLEY Healthcare**  
Exciter EX-5500  
200-2105-1000

FA2900-AL  
*Coilcraft*  
1251D

ColdFire Micror

ColdFire

Kinetic Micror

Kinetic K60

+12VDC

+3.3VDC

+5VDC

LF Ant#1

LF Ant#2

JTAG

RF#1

RF#2

ANT3

TP1 TP2 TP3 TP4 TP5 TP6 TP7 TP8 TP9 TP10 TP11 TP12 TP13 TP14 TP15 TP16 TP17 TP18 TP19 TP20 TP21 TP22 TP23 TP24 TP25 TP26 TP27 TP28 TP29 TP30 TP31 TP32 TP33 TP34 TP35 TP36 TP37 TP38 TP39 TP40 TP41 TP42 TP43 TP44 TP45 TP46 TP47 TP48 TP49 TP50 TP51 TP52 TP53 TP54 TP55 TP56 TP57 TP58 TP59 TP60 TP61 TP62 TP63 TP64 TP65 TP66 TP67 TP68 TP69 TP70 TP71 TP72 TP73 TP74 TP75 TP76 TP77 TP78 TP79 TP80 TP81 TP82 TP83 TP84 TP85 TP86 TP87 TP88 TP89 TP90 TP91 TP92 TP93 TP94 TP95 TP96 TP97 TP98 TP99 TP100

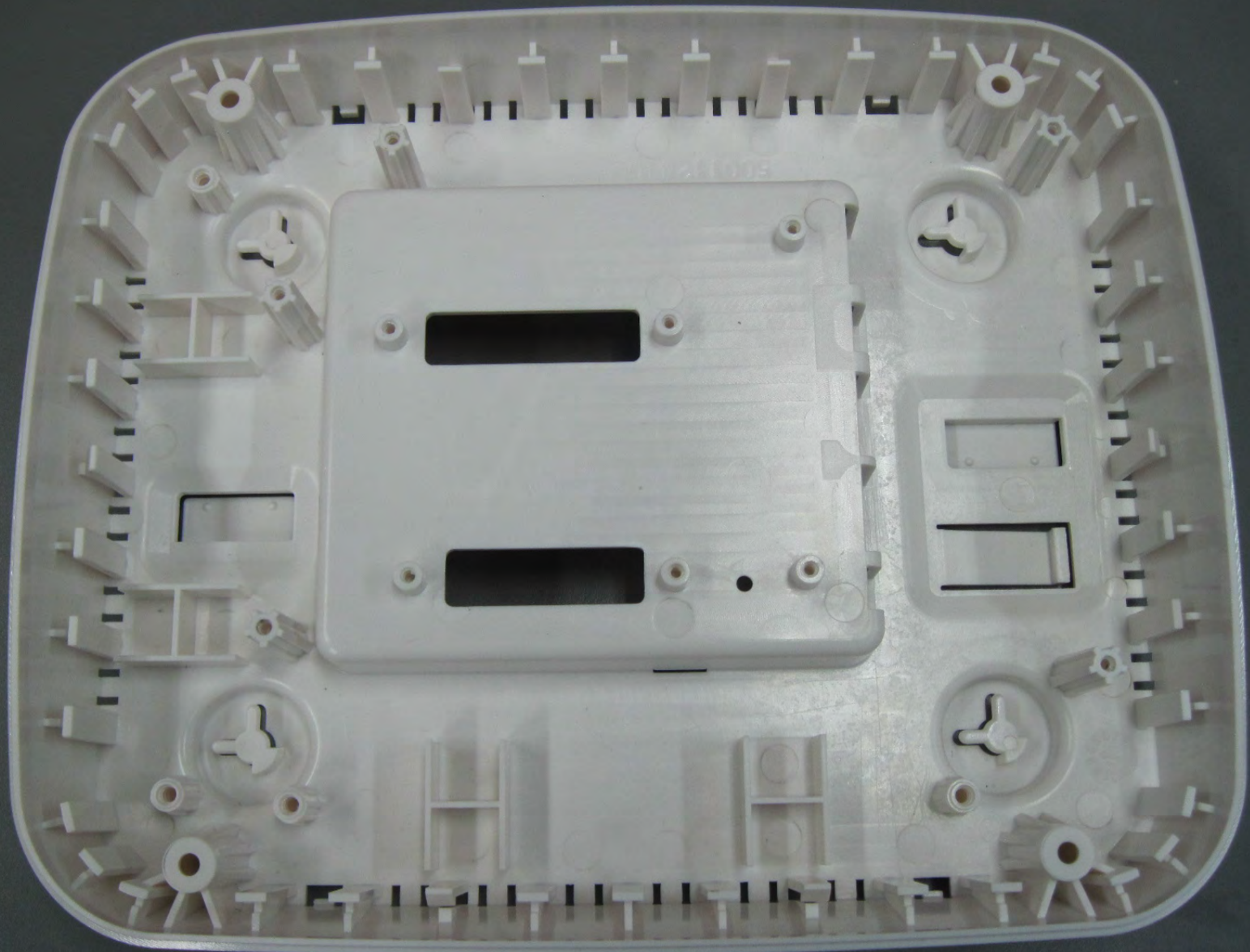
MAC: 000CCC61277D

AD5551H 09/13

Pb-free

CS

1



MAC ADDRESS

11021051000  
REV 1.02  
20/13

Q03

Relay #1

Q03

Relay #2

Q03

520

029

029

Power & Relay Conn

Kinetis Mictor

Keypad & Door Conn

Coldfire Mictor

AD656811 09/13

94HX-02 E356379  
94U-0 10 13  
200-2106-1000  
EX-5500 I/O Board  
IP RESET  
STANLEY  
Healthcare

Q03

11021051000  
REV 1.02  
19/13

OUT/EXT LF

IN/KS22

UMEC  
UT12026

+48V

**STANLEY**  
Healthcare  
Exciter EX-5500  
200-2105-1000

FA2900-AL  
*Coilcraft*  
1251 D

47 KTG.  
1W9

AD6555T1 09/13



MAC: 000CCC61277D



ColdFire Mictor



LF Ant#1

Kinetic Mictor

LF Ant#2

+12VDC

+3.3VDC

5VDC

COLDFIRE  
MCF5223CAL60  
3M423E  
0EUI211

ColdFire

KINETIS K60

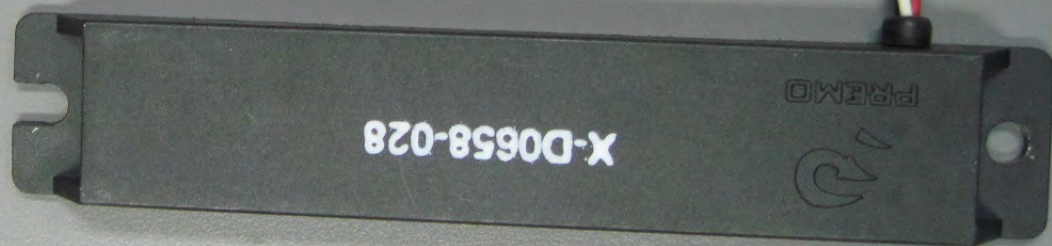
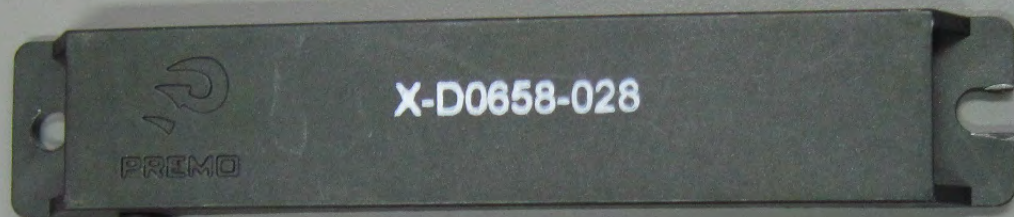
MACROCELL  
MC9320  
0E1P2-003G

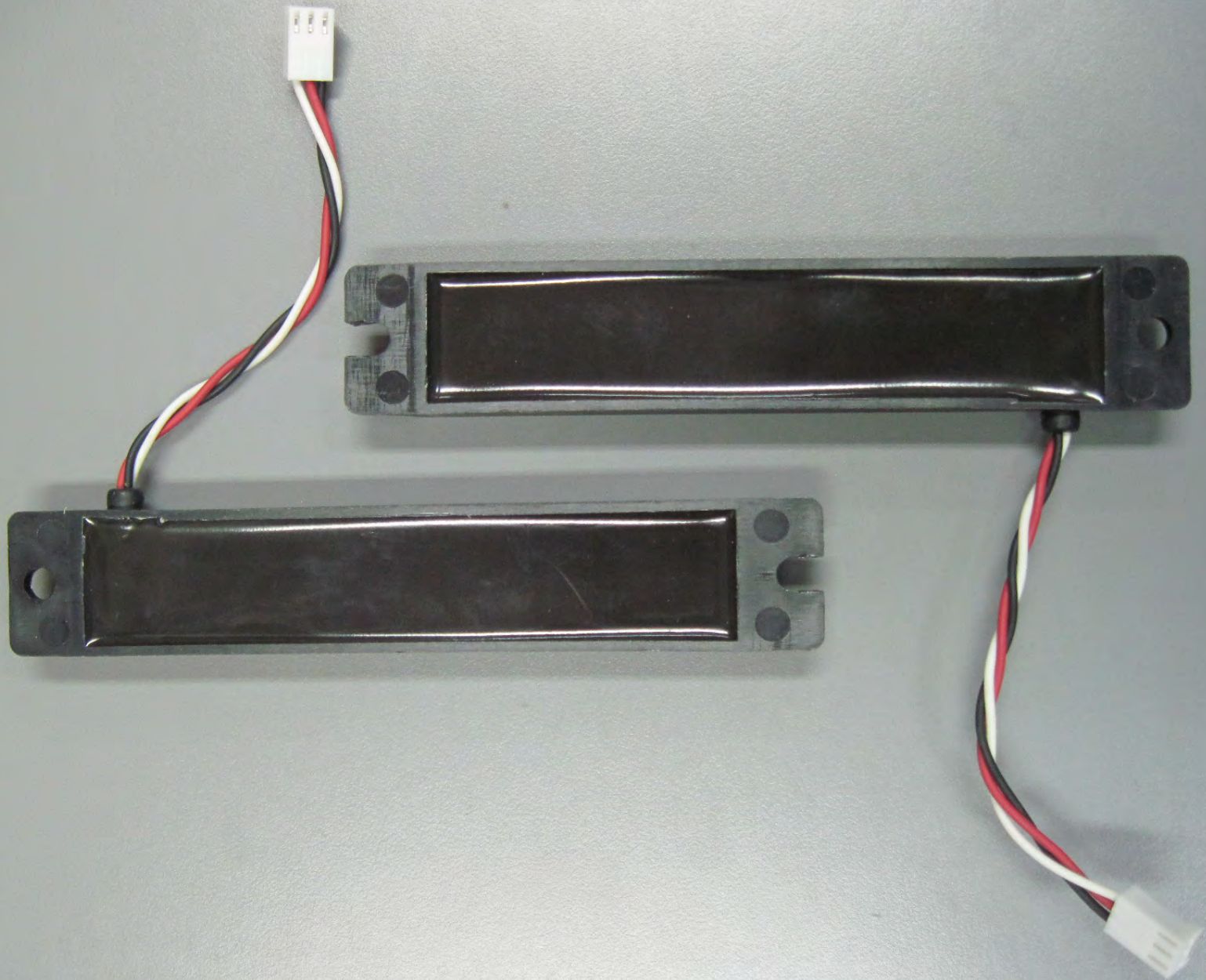
ES

UTAG

RF #2

RF #1





HX-02E356379  
94U-0 1013

200-2106-1000  
EX-5500 I/O Board

IP RESET

EXT  
IN

**STANLEY**

Healthcare

11021061000  
REV 1.02  
19/13

Pb-free

QC3

AD6568T1 09/13

IN/RS232

+48V

UMEC  
UT 12026

OUT/EXT LF

