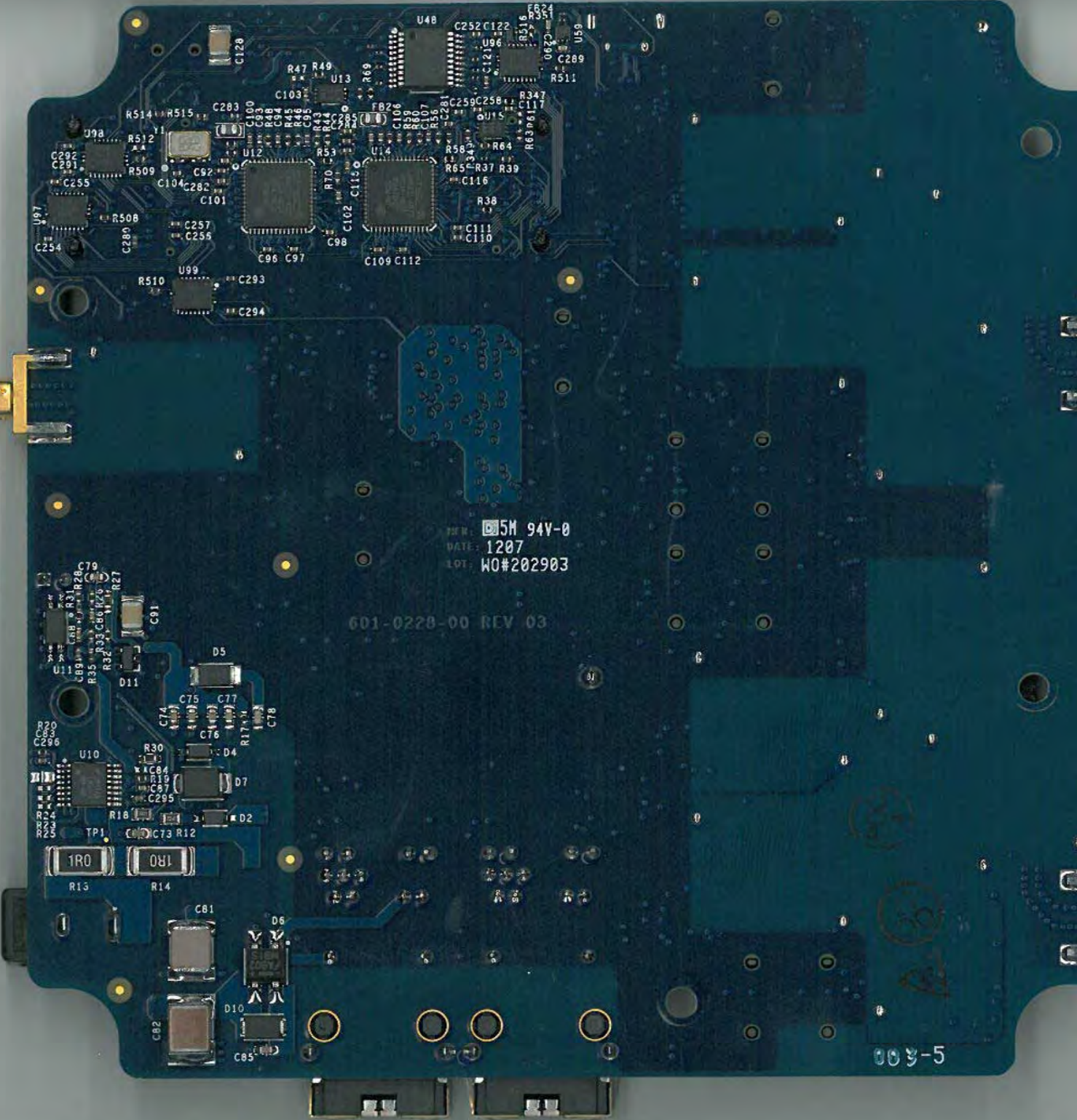
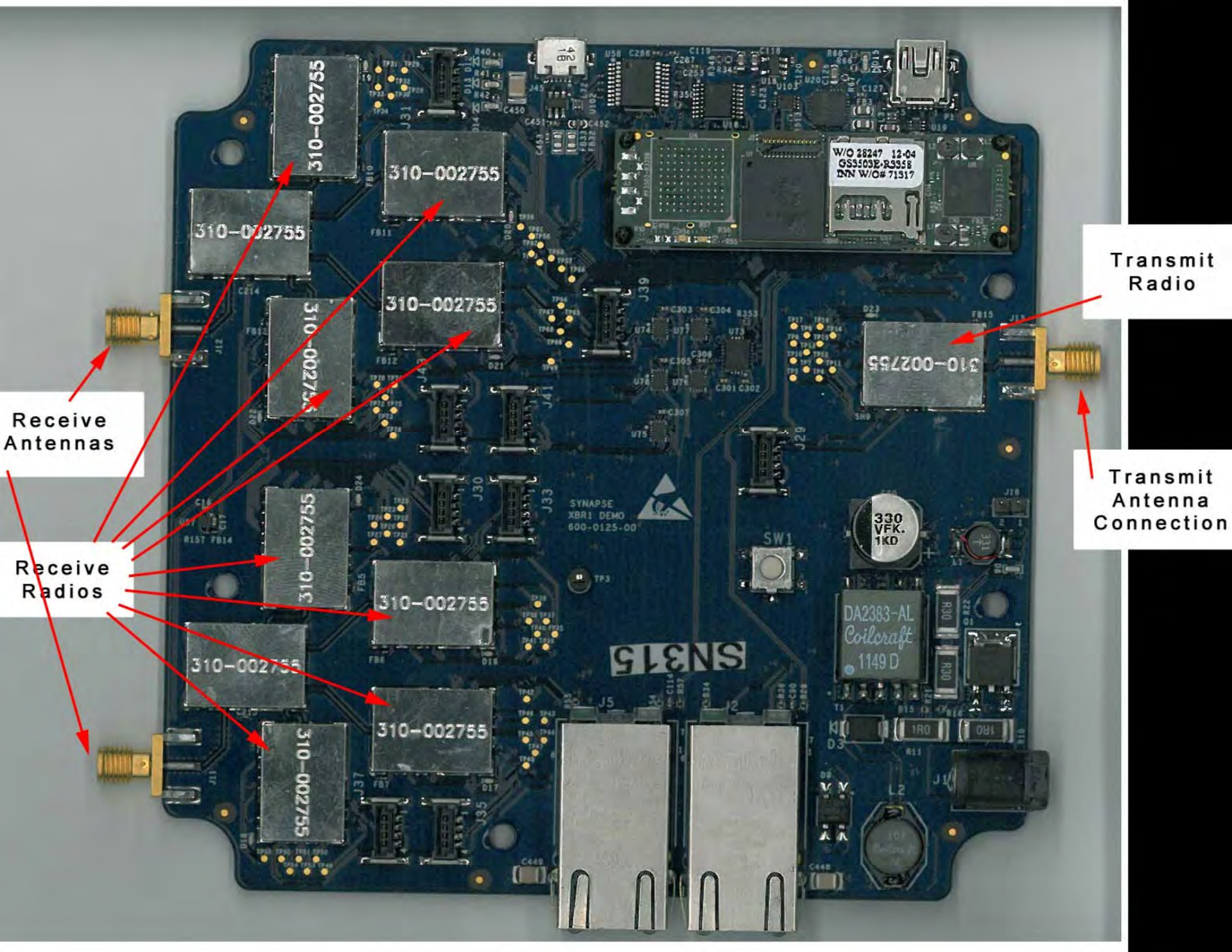


Transmit
Antenna



The image shows a blue PCB with a central IC labeled **D23**. To its left is a gold SMA connector labeled **J13**. The IC is surrounded by test points **TP1** through **TP17**. Other components include capacitors **C301 C302**, **C304 R353**, and **C306**, and resistors **R353** and **R354**. Other ICs are labeled **U3**, **U7**, and **U39**. Additional connectors are **J18**, **J29**, and **J1**. The board is populated with various electronic components and traces.



Receive Antennas

Receive Radios

Transmit Radio

Transmit Antenna Connection