

Antenna Gain Report for Trane Jolt TKV5LA

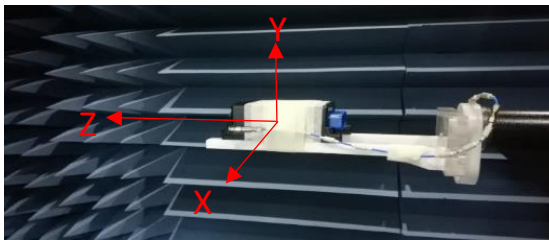
1. Test laboratory
PCI fully anechoic OTA chamber ETS Lindgren AMS-8500 and EMQuest v1.13 is used.

2. Bluetooth Antenna
Antenna type: PCB trace antenna (internal)
Antenna manufacturer name & address:
Ellington Electronics Technology Co., Ltd
Sanjiao Town of Zhongshan City, Guangdong Province, 88 Gaoping Industrial Zone, China.

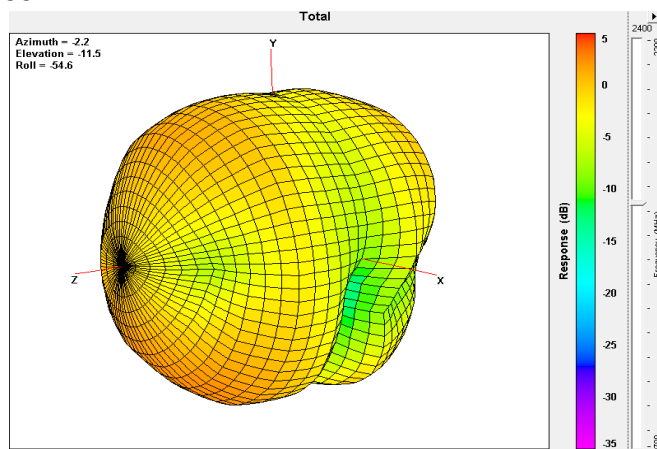
Peak gain:

Frequency (MHz)	Peak Gain (dBi)
2400-2485	2.8

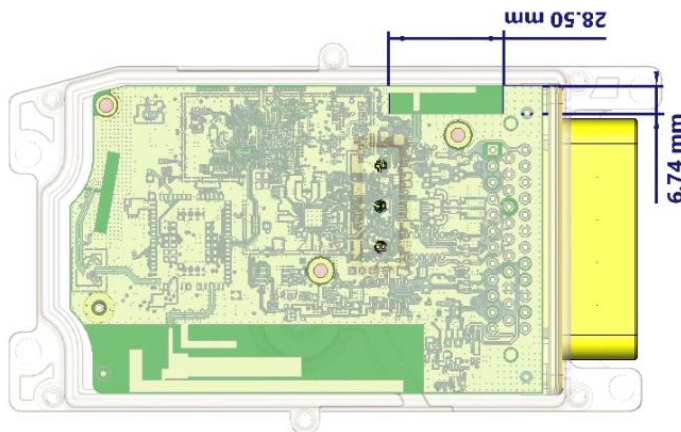
Radiation pattern:



f=2400MHz



Dimension and location of antenna:



3. GPS Antenna

Antenna type: PCB slot antenna (internal)

Antenna manufacturer name & address:

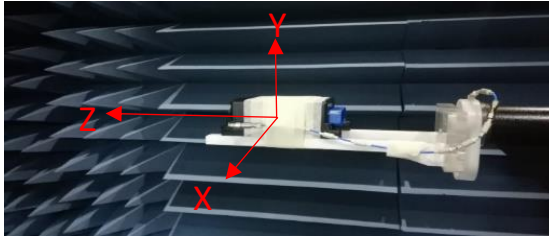
Ellington Electronics Technology Co., Ltd

Sanjiao Town of Zhongshan City, Guangdong Province, 88 Gaoping Industrial Zone, China.

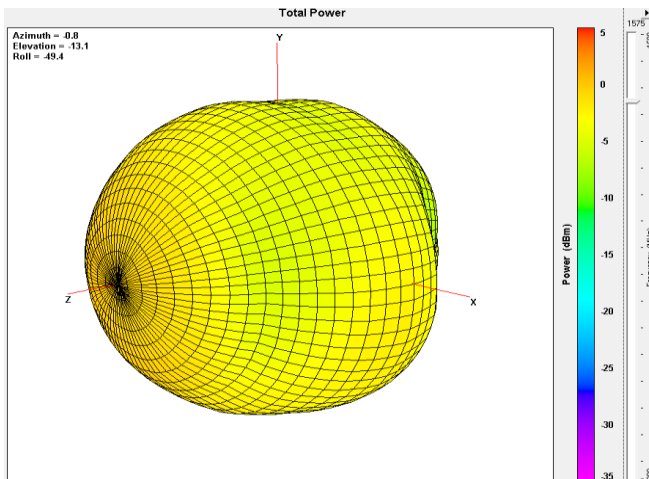
Peak gain:

Frequency (MHz)	Peak Gain (dBi)
1559-1610	0.82

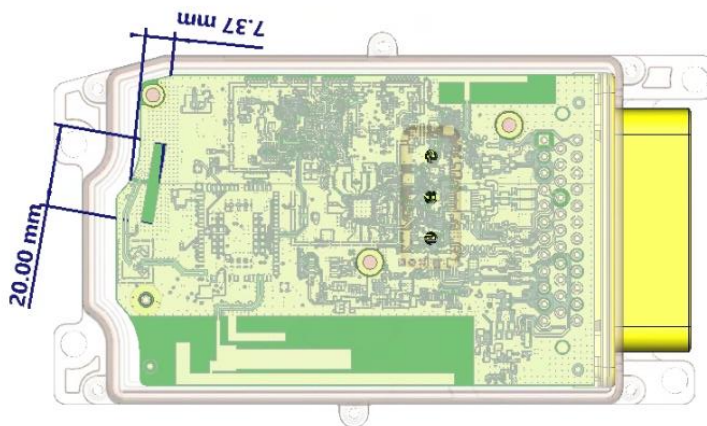
Radiation pattern:



f=1575MHz



Dimension and location of antenna:



4. Cellular Antenna

Antenna type: PCB trace antenna (internal)

Antenna manufacturer name & address:

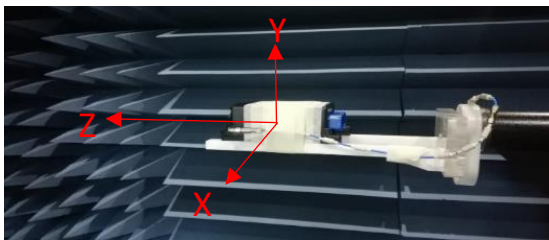
Ellington Electronics Technology Co., Ltd

Sanjiao Town of Zhongshan City, Guangdong Province, 88 Gaoping Industrial Zone, China.

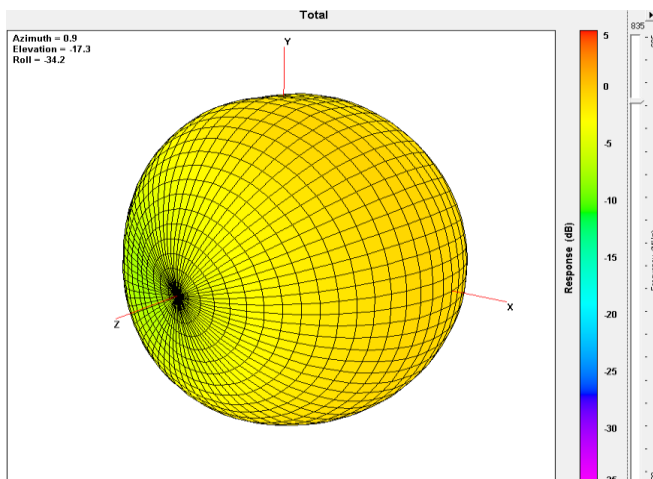
Peak gain:

Bands	Transmit Frequency (MHz)	Peak Gain (dBi)
GSM 850	824-849	-0.35
EGSM 900	880-915	-0.41
DCS 1800	1710-1785	3.39
PCS 1900	1850-1910	2.33
WCDMA B1	1920-1980	1.65
WCDMA B2	1850-1910	2.33
WCDMA B5	824-849	-0.35
WCDMA B8	880-915	-0.41
LTE FDD B1	1920-1980	1.65
LTE FDD B2	1850-1910	2.33
LTE FDD B3	1710-1785	3.39
LTE FDD B4	1710-1755	3.39
LTE FDD B5	824-849	-0.35
LTE FDD B7	2500-2570	3.84
LTE FDD B8	880-915	-0.41
LTE FDD B28	703-748	-0.21
LTE FDD B66	1710-1780	3.39

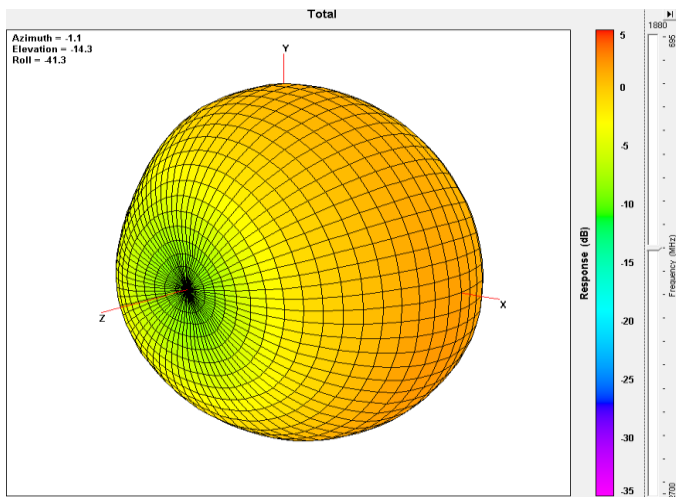
Radiation pattern:



f=835MHz



f=1880MHz



Dimension and location of antenna:

