

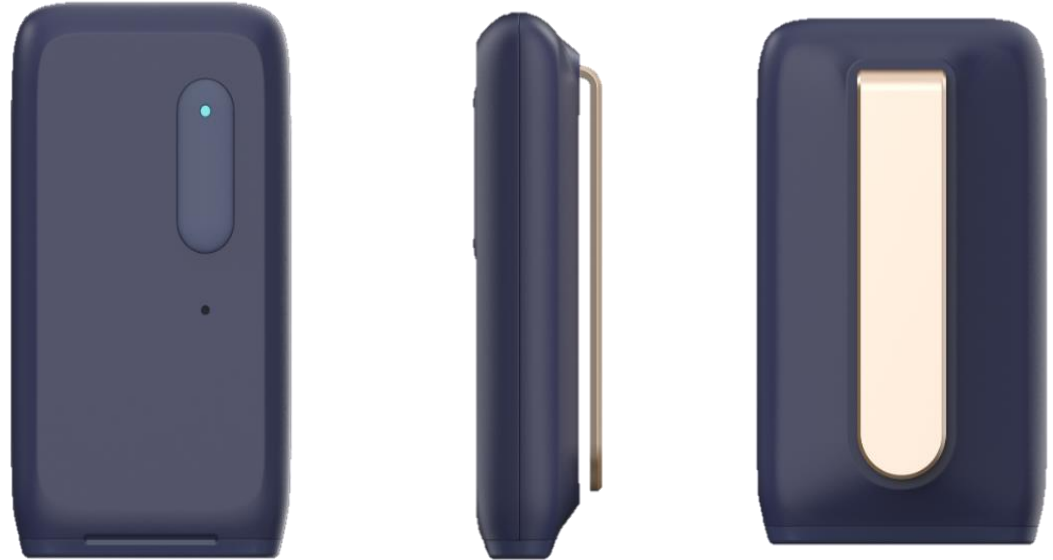


EM-R100 User Manual

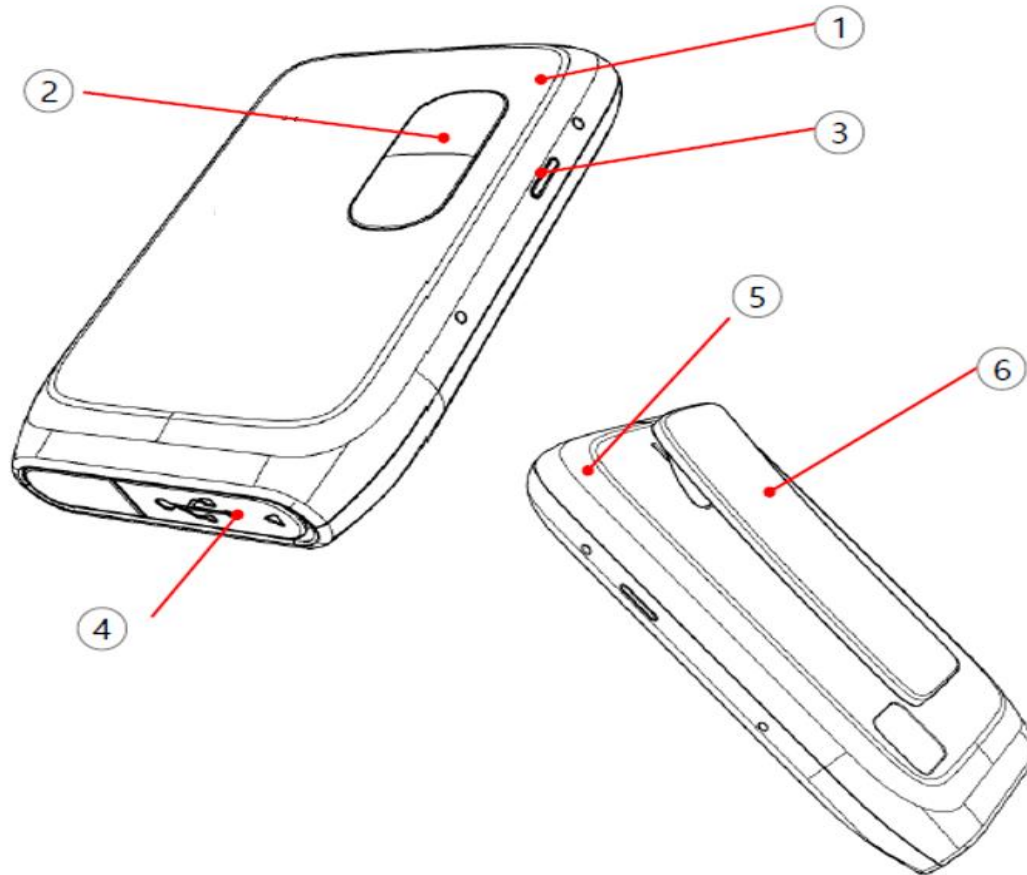


We think people
We think healthy hearing

1. EM-R100 Structure
2. Power / Pairing
3. Hearing Through Remote Microphone
4. Battery Check/ Recharge
5. EM-R100 Specification



1. EM-R100 Structure



① Upper

② Button

③ LED

④ Charging Port

⑤ Bottom

⑥ Clip

2. Power / Pairing

- Power

Function	State	Key	LED
Power On	Power On	Button Press 1 Second	Blue 1 Second On → Battery level LED
Power Off	Power Off	Button Press 3 Seconds	Red 1 Second On

- Power On / Off operates even when USB cable is connected
- Plugging and unplugging the charger does not affect the Power On / Off status.
- LED blinks 3 times according to the battery level after Power On
- Red LED blinks 4 times every 5 seconds when battery is low.

- Pairing

Function	State	Key	LED
Auto Pairing	OFF(Connection history X)	Button 1s	- Pairing → Red/Blue blinks alternately - Auto power off after 3 minutes - Connected → Blue blinking 2 times
Manual Pairing	OFF(Connection history O)	Button 3s	

- Auto Pairing : When there is no connection history, the EM-R100 automatically enters Pairing Mode after Power On
- Manual Pairing : When you are trying to connect to another device with a connection history.

3. Hearing Through Remote Microphone



We think people
We think healthy hearing

- Sink device (EM-C110) connected with Mic input sound playback automatically
 - Place the EM-R100 and EM-C110 closely when in pairing mode.
 - Be sure to turn off the BeethoSOL mode of the EM-C110 when using the EM-R100.
 - When EM-R100 and EM-C110 are paired and connected, it will automatically play the sound.
 - After EM-R100 or EM-C110 is rebooted, it will pair automatically, and sound will be played back.
- EM-C110 <-> Connect with Smartphone
 - When EM-R100 and EM-C110 are connected and EM-C110 and smartphone are connected, rebooting the EM-C110 will connect both EM-R100 and smartphone. EM-R100 mic sound will be played by default.
 - EM-C110 plays a call sound without playing the EM-R100 sound when calling / receiving a call with smartphone.
 - At the end of the call, the EM-R100 sound will be played again.
- Volume Adjustment
 - You can adjust the volume of the Mic sound played when connecting EM-R100 and EM-C110 with the jog switch of EM-C110.

Function	State	Key	LED	Audio Indication (Voice Prompt / Tone)
Volume Up	Every Status	'Vol.Up' press up	-	Vol 0: long low beep 1 time Vol 1~14: short beep 1 time Vol 15: short high beep 1 time
Volume Down		'Vol.Down' press down		

4. Battery Check / Charging



We think people
We think healthy hearing

- Manual Battery Check

Function	State	Key	LED
Battery Check	Power on (Charger not connected)	Button Press 2 Times	100 ~ 70% -> Blue 3 Times 70 ~ 20% -> Purple 3 Times 20 ~ 0% -> Red 3 Times

- Charging

➤ Open the USB port on the bottom and charge USB

Function	Key	Remaining Battery	LED
Charging	Charger Connected	100%	Blue
		80% Above	Purple
		80% Below	Red

5. EM-R100 Specification



We think people hearing

Feature		Spec.
		EM-R100
H/W	AUDIO DSP	X
	Mic Amp	Applied
	Microphone	1 Mic
	LED	3-Color, Side view (Blue, Purple, Red)
	Button & Key	1EA (TACTILE)
	Charger I/O	Micro USB B
	Bluetooth Version	5.0V
Body	Clip	Clip Type
	Color	Navy Blue / Black
	Weight (mm)	12g
	Size (mm)	49.05 x 30.37 x 7.81 (Except Clip Thickness)
Time	Battery	DC 3.7V / 210mAh
	Operation Time	10Hrs
	Charging Time	2.5Hrs
Output power	E.I.R.P	4.00 dBm @2402~2480 MHz
Function		Sound Amplifying Function

Declaration of Conformity



We think people
We think healthy hearing

BSL Co., Ltd. declares that this device complies with the essential requirements and relevant provisions of Directive 2014/53/EU.

Go to <http://www.bsl.co.kr/> to view the Declaration of Conformity

FCC Warning Statement



We think people
We think healthy hearing

FCC Part 15.19

This device complies with part 15 of the FCC Rules. Operation is subject to the following two conditions: (1) This device may not cause harmful interference, and (2) this device must accept any interference received, including interference that may cause undesired operation.

FCC Part 15.21

Any changes or modifications (including the antennas) to this device that are not expressly approved by the manufacturer may void the user's authority to operate the equipment.

FCC Part 15.105

Note : This equipment has been tested and found to comply with the limits for a Class B digital device, pursuant to part 15 of the FCC Rules. These limits are designed to provide reasonable protection against harmful interference in a residential installation. This equipment generates, uses and can radiate radio frequency energy and, if not installed and used in accordance with the instructions, may cause harmful interference to radio communications. However, there is no guarantee that interference will not occur in a particular installation. If this equipment does cause harmful interference to radio or television reception, which can be determined by turning the equipment off and on, the user is encouraged to try to correct the interference by one or more of the following measures:

- Reorient or relocate the receiving antenna.
- Increase the separation between the equipment and receiver.
- Connect the equipment into an outlet on a circuit different from that to which the receiver is connected.
- Consult the dealer or an experienced radio/TV technician for help.

Modifications not expressly approved by the manufacturer could void your authority to operate the equipment under FCC rules.

FCC RF Radiation Exposure Statement

This equipment complies with FCC RF Radiation exposure limits set forth for an uncontrolled environment.

This device and its antenna must not be co-located or operating in conjunction with any other antenna or transmitter.