

**MEASUREMENT RESULT: "4\_CMHS1\_21\_fin\_QP"**

14.08.02 09:27

Frequency MHz	Level dB $\mu$ V/m	Transd dB	Limit dB $\mu$ V/m	Margin dB	Height cm	Azimuth deg	Polarisation
400.020000	36.60	16.4	46.0	9.4	100.0	179.00	VERTICAL

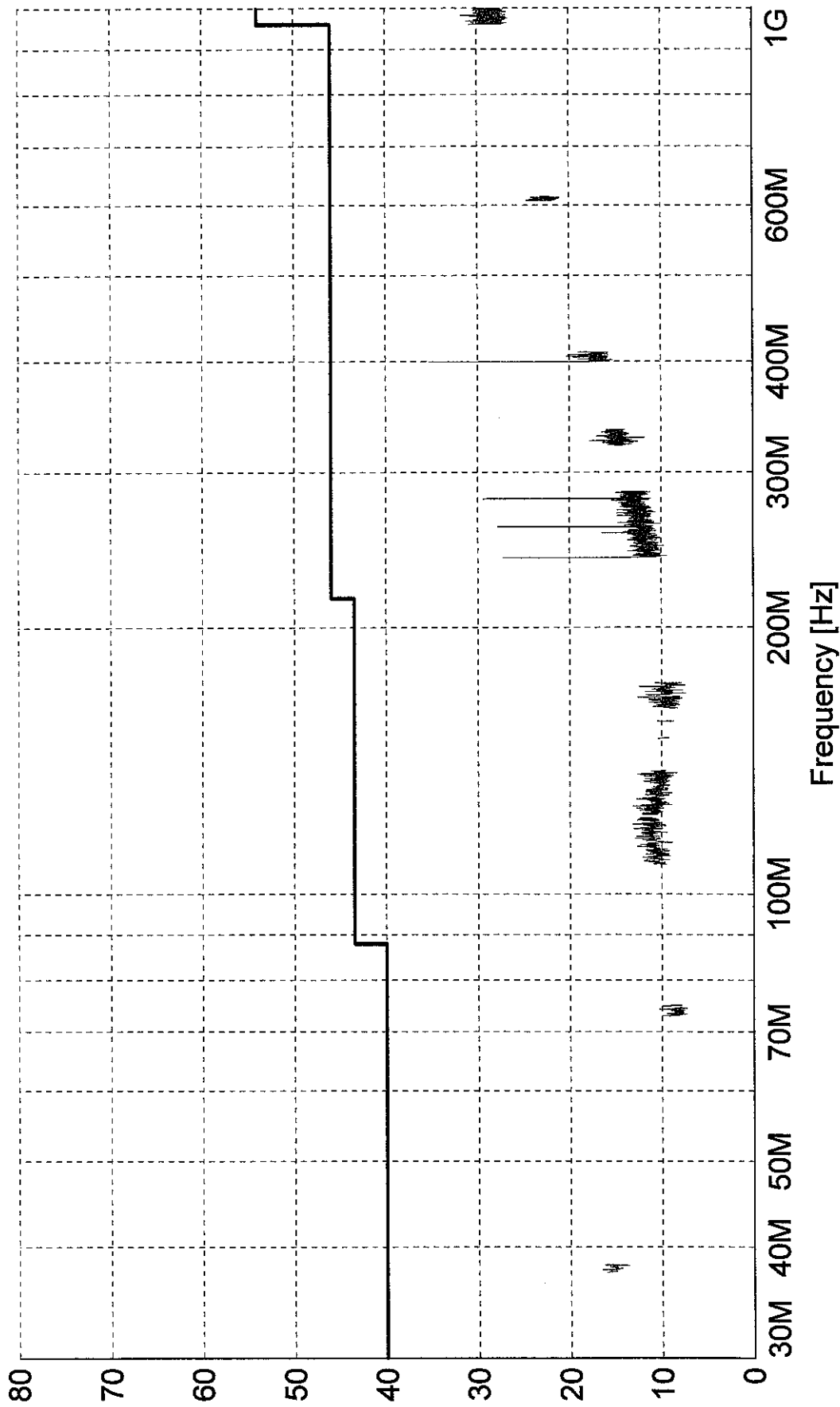
**SPURIOUS EMISSION RADIATED**

EUT: CMH51 (03100b01) / 13.08.2002  
 Manufacturer: Plextek  
 Operating Condition: TX on 2480 MHz  
 Test Site: 7 layers, Ratingen  
 Operator: MAC  
 Test Specification: FCC 15.247 (15.35b, 15.209)  
 Comment: vertical + horizontal polarisation  
 Start of Test: 14.08.02 / 09:30:40

**SCAN TABLE: "FCC 15.209 Field <1G"**

Short Description:		EN 55022 Field Strength		IF		Transducer	
Start	Stop	Step	Detector	Meas. Time	Bandw.	IF	Transducer
Frequency	37.5 MHz	38.3 MHz	60.0 kHz	MaxPeak	100.0 µs	120 kHz	HL562
	73.0 MHz	74.6 MHz	60.0 kHz	MaxPeak	100.0 µs	120 kHz	HL562
	74.8 MHz	75.2 MHz	60.0 kHz	MaxPeak	100.0 µs	120 kHz	HL562
	108.0 MHz	121.9 MHz	60.0 kHz	MaxPeak	100.0 µs	120 kHz	HL562
	123.0 MHz	138.0 MHz	60.0 kHz	MaxPeak	100.0 µs	120 kHz	HL562
	149.9 MHz	150.1 MHz	60.0 kHz	MaxPeak	100.0 µs	120 kHz	HL562
	156.5 MHz	156.5 MHz	60.0 kHz	MaxPeak	100.0 µs	120 kHz	HL562
	156.7 MHz	156.9 MHz	60.0 kHz	MaxPeak	100.0 µs	120 kHz	HL562
	162.0 MHz	167.2 MHz	60.0 kHz	MaxPeak	100.0 µs	120 kHz	HL562
	167.7 MHz	173.2 MHz	60.0 kHz	MaxPeak	100.0 µs	120 kHz	HL562
	240.0 MHz	285.0 MHz	60.0 kHz	MaxPeak	100.0 µs	120 kHz	HL562
	322.0 MHz	335.4 MHz	60.0 kHz	MaxPeak	100.0 µs	120 kHz	HL562
	399.9 MHz	410.0 MHz	60.0 kHz	MaxPeak	100.0 µs	120 kHz	HL562
	608.0 MHz	614.0 MHz	60.0 kHz	MaxPeak	100.0 µs	120 kHz	HL562
	960.0 MHz	1.0 GHz	60.0 kHz	MaxPeak	100.0 µs	120 kHz	HL562

Level [dB $\mu$ V/m]



— MES 4 CMHS1\_22\_pre PK  
— LIM FCC 15.209\_3m Field Strength QP/AV Limit