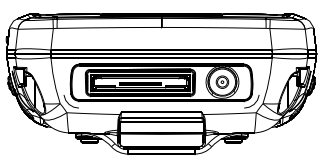
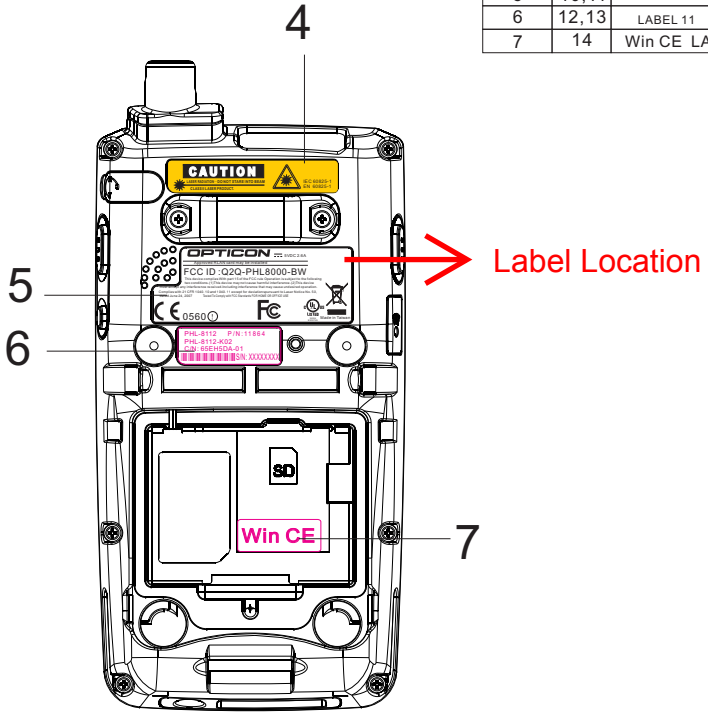
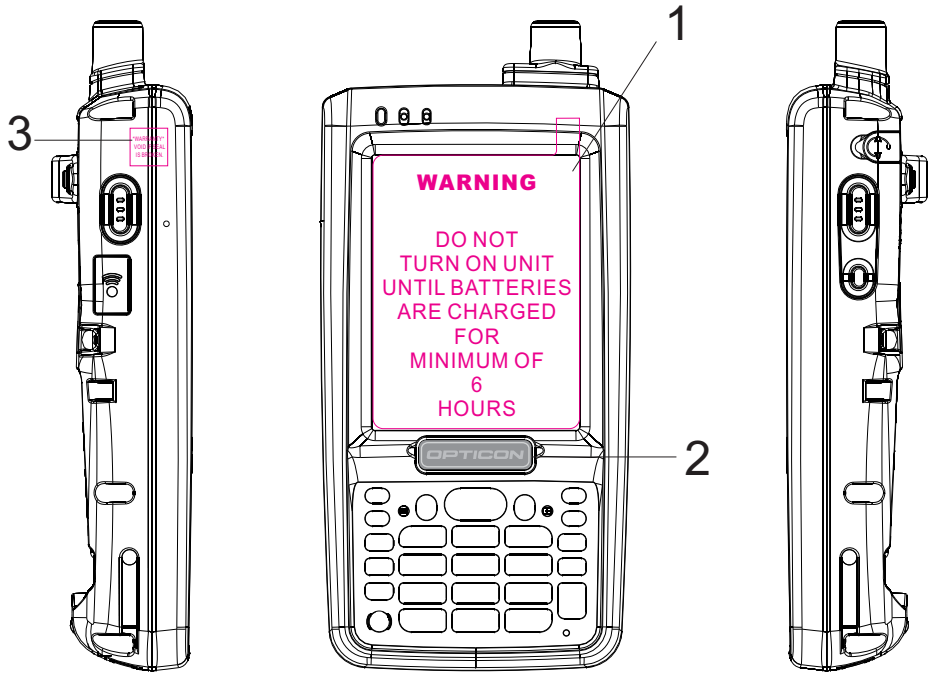
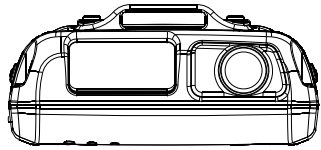


REV	DATE	DESCRIPTION	DESIGN	APP'D

ITEM	PAGE	PART NAME	PART NO.	NOTE
1	2,3	PANEL PROTECT FILM	4660-000020-01	
2	4, 5	opticon LOGO	4680-000014-01	
3	6,7	WARRANTY LABEL	4660-810009-01	
4	8,9	LASER WARNING LABEL	4680-000003-01	
5	10,11	LABEL 10	4660-810032-01	
6	12,13	LABEL 11	4660-810033-01	
7	14	Win CE LABEL	4660-810003-01	



  			
SCALE:	1:2	UNIT:	MODEL:
		PHL-8000 Series	
FINISH:		MATERIAL:	
DESIGN:	Bigi		TITLE:
CHK:			PHL-8000 Series Label list
APP'D:			P/N:
A4		SHEET OF	FILE NAME: Labels List
4	3	1	REV 02

# No.5

REV	DATE	DESCRIPTION	DESIGN	APP'D

**OPTICON** --- 5VDC 2.6A  
 Approved RLAN card may be installed  
**FCC ID : Q2Q-PHL8000-BW**  
 This device complies With part 15 of the FCC rule Operation is subject to the following two conditions. (1)This device may not cause harmful interference. (2)This device must accept any interference received, including interference that may cause undesired operation.  
 Complies with 21 CFR 1040. 10 and 1040. 11 except for deviations pursuant to Laser Notice No. 50, dated June 24, 2007. Tested To Comply with FCC Standards FOR HOME OR OFFICE USE.

1 : 1

**OPTICON** --- 5VDC 2.6A  
 Approved RLAN card may be installed  
**FCC ID : Q2Q-PHL8000-BW**  
 This device complies With part 15 of the FCC rule Operation is subject to the following two conditions. (1)This device may not cause harmful interference. (2)This device must accept any interference received, including interference that may cause undesired operation.  
 Complies with 21 CFR 1040. 10 and 1040. 11 except for deviations pursuant to Laser Notice No. 50, dated June 24, 2007. Tested To Comply with FCC Standards FOR HOME OR OFFICE USE.

2 : 1

鑫銓電腦股份有限公司 <small>SHEN CHUAN COMPUTER CO., LTD.</small>			
SCALE:	1:2	UNIT:	MODEL: PHL-8000 Series
FINISH:		MATERIAL:	
DESIGN:	Bigi	TITLE:	
CHK:			
APP'D:		P/N:	4660-810032-01
A4		SHEET OF	FILE NAME: Labels List
			REV 02