

Figure 3-70 Network and Dial-up Connections

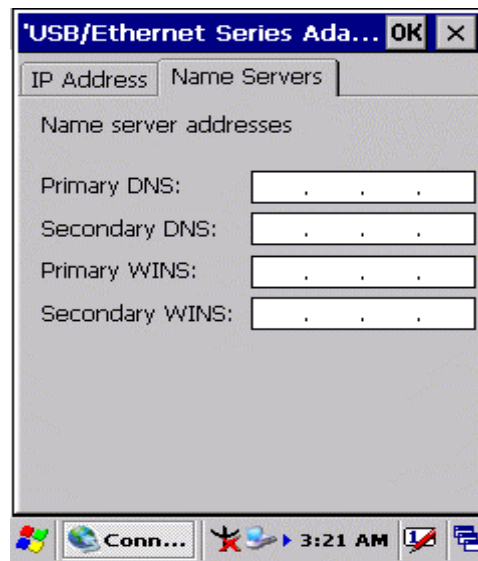


Figure 3-71 Network and Dial-up Connections

3.2.12 Owner


ICON	ITEM & FUNCTION
 Owner	<ul style="list-style-type: none"> <li data-bbox="336 409 895 450">• “Identification” Tab : (Figure 3-74) <li data-bbox="336 461 868 501">✓ Fill in or edit the data as desired. <li data-bbox="336 512 1206 636">✓ To have this information displayed when you start your device, select “Display Owner Identification” at Power On. <li data-bbox="336 647 1243 734">✓ To set up identification for remote networks, see Setting up identification for remote networks. <li data-bbox="336 745 868 786">• “Network ID” Tab: (Figure 3-75) <li data-bbox="336 797 1243 882">✓ Enter the user name, password, and domain name you use to log on to remote network.

Table 3-32 Owner



Figure 3-72 Owner Properties

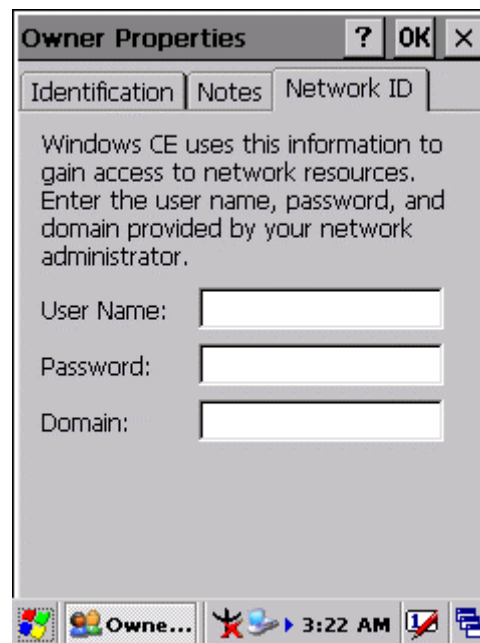


Figure 3-73 Owner Properties

3.2.13 Password


ICON	ITEM & FUNCTION
 Password	<ul style="list-style-type: none"> • “Password Setting” Tab : (Figure 3-76) ✓ Enter the password ✓ In the “Confirm password” box, enter the password again. ✓ To require the password on startup, select “Enable password protection at power- on”. and/or select “Enable password protection for screen saver” ✓ To exit the Password control panel, press “OK” from the control bar, or press the <Enter> key on the keypad.

Table 3-33 Password

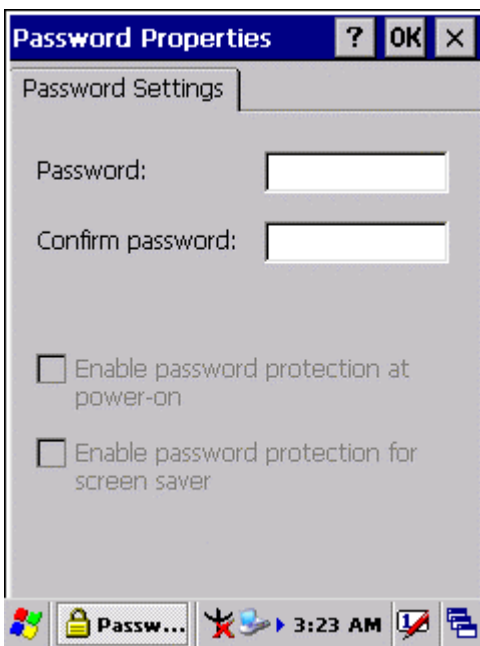


Figure 3-74 Password Properties

3.2.14 PC Connection


ICON	ITEM & FUNCTION
 <p>PC Connection</p>	<ul style="list-style-type: none"> • “PC Connection” Tab : (Figure 3-77) ✓ Select the first checkbox to enable direct connections to the desktop computer. (Figure 3-77) ✓ Tap the “Change Connection...” button to modify the connection method from USB or Serial. (Figure 3-78) ✓ To exit the “Change Connection” dialog, press “OK” from the control bar, or press the <Enter> key on the keypad. ✓ To exit the “PC Connection” properties control panel, press “OK” from the control bar, or press the <Enter> key on the keypad.

Table 3-34 PC Connection

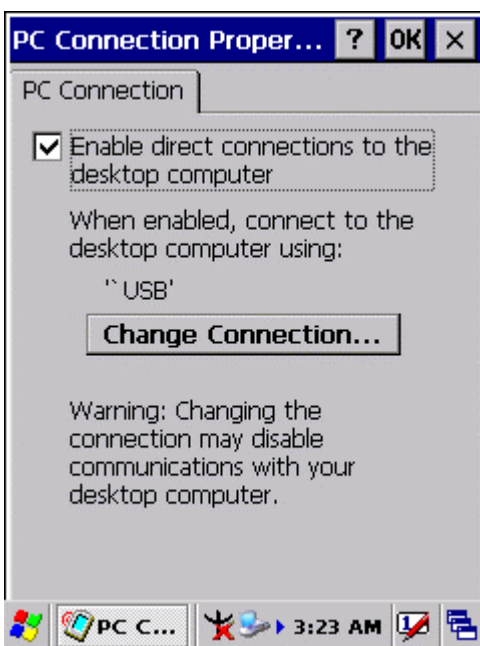


Figure 3-75 PC Connection

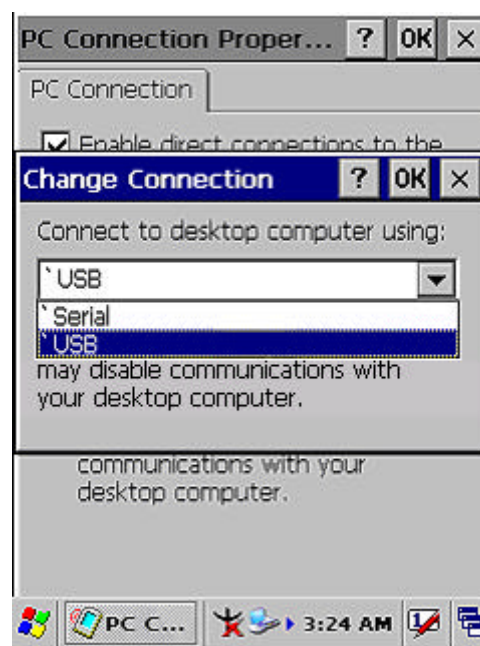


Figure 3-76 PC Connection

3.2.15 Power





ICON	ITEM & FUNCTION
 Power	<ul style="list-style-type: none"> <li data-bbox="336 409 1254 450">• “Battery” Tab : (Figure 3-79) <li data-bbox="336 461 1254 539">✓ Provide change level indicators for Main battery and Backup battery. <li data-bbox="336 551 1254 591">✓ Provide remaining power capacity of main battery. <li data-bbox="336 602 1254 734">✓ If a “Main Batteries very Low” warning message shows, the remaining battery life is around 30 minutes before PDT shuts down. (Figure 3-83) <li data-bbox="336 745 1254 831">✓ The PDT will shutdown if the main batteries capacity is around 0% <li data-bbox="336 842 1254 927">✓ To exit Battery control panel, press “OK” from the command bar, or press <Enter> key on keypad. <li data-bbox="336 938 1254 978">• “ Schemes” Tab: (Figure 3-80) <li data-bbox="336 990 1254 1117">✓ The Scheme Tab allows you to determine the time to switch state to Suspend mode when using either Battery Power or AC Power. <li data-bbox="336 1128 1254 1214">✓ Select Battery Power or AC Power as the power scheme from the pull-down list.(Figure 3-80) <li data-bbox="336 1225 1254 1310">✓ Select the time to suspend mode from the pull-down list. (Figure 3-81) <li data-bbox="336 1321 1254 1361">• “Device Status” Tab: (Figure 3-82) <li data-bbox="336 1373 1254 1545">Provide power level of the device – The power level ranges from “ High(D0)” which means the device is at the highest power level to “Off(D4)” which means the device is at the lowest power level.
Note:	
	This ICON inside the Task Bar shows that AC adapter provides power to the PDT
	The ICON inside the Task Bar shows that Main Batteries provides the power to the PDT.
	The ICON inside the Task Bar shows that AC adapter provides the power to the PDT and is charging the main batteries..

Table 3-35 Power

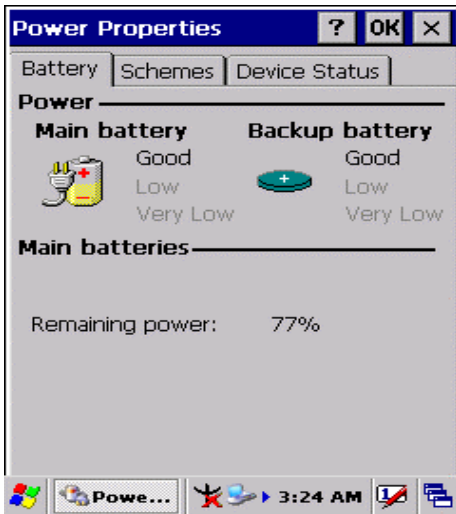


Figure 3-77 Power

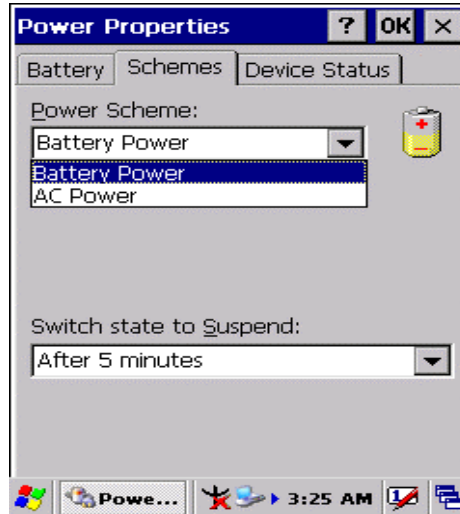


Figure 3-78 Power

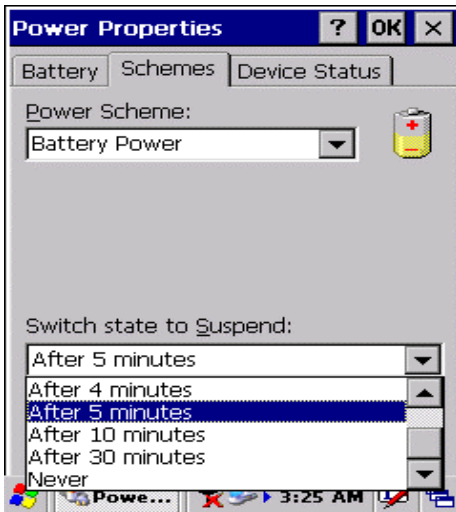


Figure 3-79 Power

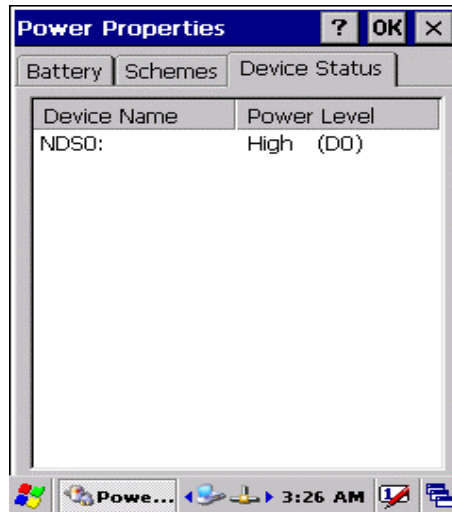


Figure 3-80 Power

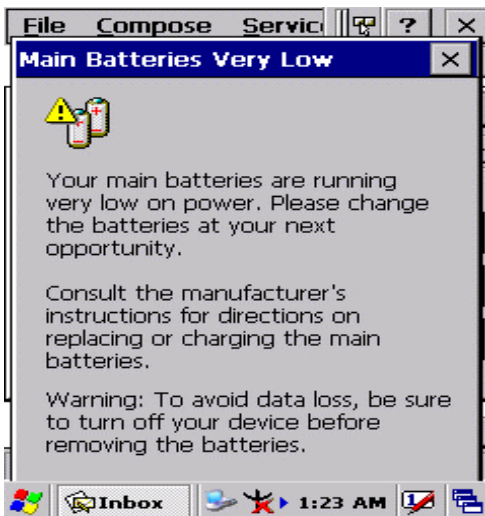


Figure 3-81 Power

3.2.16 Regional Settings


ICON	ITEM & FUNCTION
 Regional Settings	<ul style="list-style-type: none"> • “Region” Tab : (Figure 3-84) ✓ Select the desired location/language. ✓ Review the Appearance samples in the bottom half of the screen. ✓ Select the Tab at the top for any settings you wish to change, Options to modify include Number, Currency, Time, and Date.

Table 3-36 Regional Settings

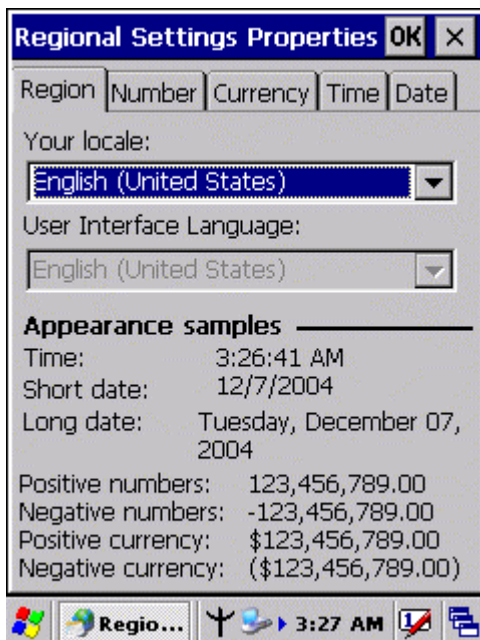


Figure 3-82 Regional Settings

3.2.17 Remove Programs


ICON	ITEM & FUNCTION
 Remove Programs	<ul style="list-style-type: none"> • “Remove Programs” Tab : ✓ Only user installed programs can be removed. ➤ Select the program you wish to remove from the list and press “remove” button.

Table 3-37 Remove Programs

3.2.18 Storage Manager


ICON	ITEM & FUNCTION
 Storage Manager	<ul style="list-style-type: none"> • “Storage Manager” Tab : (Figure 3-83) ✓ To change Storage properties control panel default settings: Insert Compact Flash(CF) or Secure digital (SD) storage card into the unit. <ul style="list-style-type: none"> ➤ Select Start > Settings > Control Panel > Storage Properties ➤ From the “Storage Info” pull-down list, select the desired storage device. ➤ You can also format, dismount, and create partitions on storage devices using this control panel. ➤ To save and exit the Storage Properties control panel, press “OK” from the control bar, or press the <Enter> key on the keypad. <p>Caution: Dismounting or formatting the DiskOnChip will erase all files and program stored in Flash Memory</p>

Table 3-38 Storage Manager



Figure 3-83 Storage Manager

3.2.19 Stylus


ICON	ITEM & FUNCTION
 Stylus	<ul style="list-style-type: none"> <li data-bbox="336 1272 1050 1308">• “Double-Tap” Tab : (Figure 3-86,Figure 3-87) <li data-bbox="336 1323 1230 1359">✓ Double-tap the checkerboard grip at a comfortable speed. <li data-bbox="336 1375 1007 1411">✓ Double-tap clapboard to test your settings. <li data-bbox="336 1426 1219 1503">✓ The function is OK if the figures are changed from Figure 3-86 to Figure 3-87. <li data-bbox="336 1518 975 1554">✓ To tap “OK” to exit the Stylus Properties. <li data-bbox="336 1570 986 1606">• “Calibration” : (Figure 3-88, Figure 3-89) <li data-bbox="336 1621 1246 1742">✓ In the Welcome Wizard, you tapped a target with the stylus to set the amount of pressure needed for the screen to respond to your stylus taps. <li data-bbox="336 1758 1198 1794">✓ Please also see 2.4.3 Calibration of the touch Screen

Table 3-39 Stylus

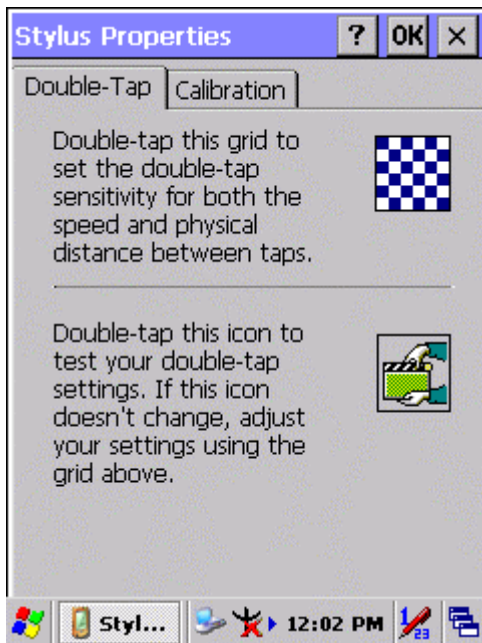


Figure 3-84 Stylus Properties

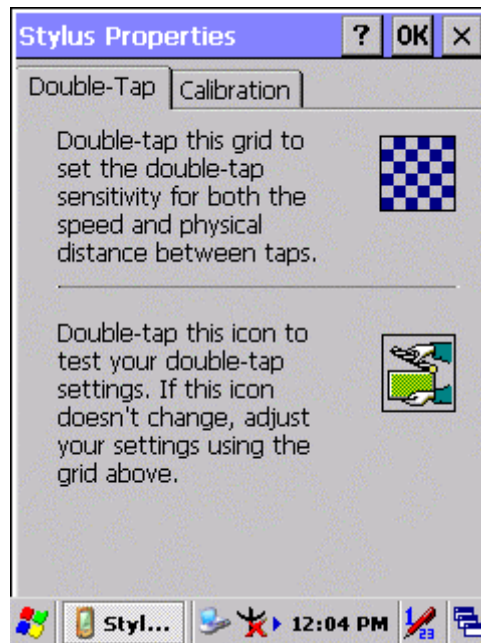


Figure 3-85 Stylus Properties



Figure 3-86 Stylus Properties

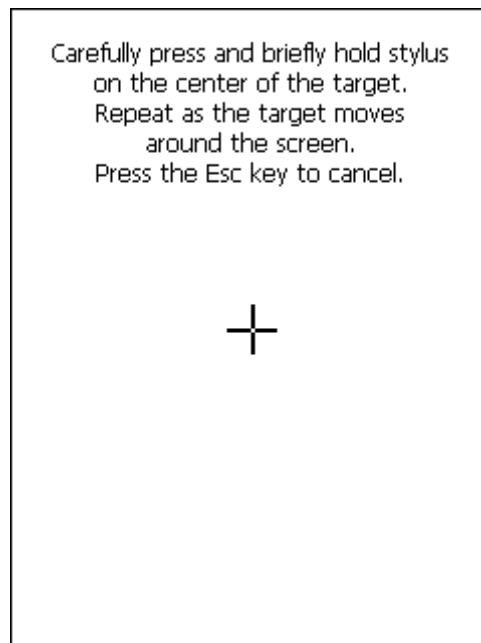


Figure 3-87 Stylus Properties