

### 3.2.4.4 Fn-key Settings


ICON	ITEM & FUNCTION										
	<ul style="list-style-type: none"> <li>• <b>Fn-Key Setting (Figure 3-42)</b></li> </ul>										
	<table border="1"> <thead> <tr> <th>Fn Key</th> <th>The Application Program of default setting</th> </tr> </thead> <tbody> <tr> <td>F1</td> <td>Internet Explorer</td> </tr> <tr> <td>F2</td> <td>Microsoft WordPad</td> </tr> <tr> <td>F3</td> <td>Inbox</td> </tr> <tr> <td>F4</td> <td>My Computer</td> </tr> </tbody> </table>	Fn Key	The Application Program of default setting	F1	Internet Explorer	F2	Microsoft WordPad	F3	Inbox	F4	My Computer
	Fn Key	The Application Program of default setting									
	F1	Internet Explorer									
	F2	Microsoft WordPad									
	F3	Inbox									
F4	My Computer										
<ul style="list-style-type: none"> <li>✓ To assign your favorite application program to F1, F2, F3 and F4 hot keys.</li> <li>✓ Choose one of F1, F2, F3 and F4 from pull-down list. <b>(Figure 3-43)</b></li> <li>✓ To tap “Browse...” inside “Assign program” applet.</li> <li>✓ Select one application program you want from program list, then, choose “OK”. <b>(Figure 3-43)</b></li> <li>✓ To tap “Default” to return back to default setting. <b>(Figure 3-42)</b></li> </ul>											

Table 3-23 Fn-Key

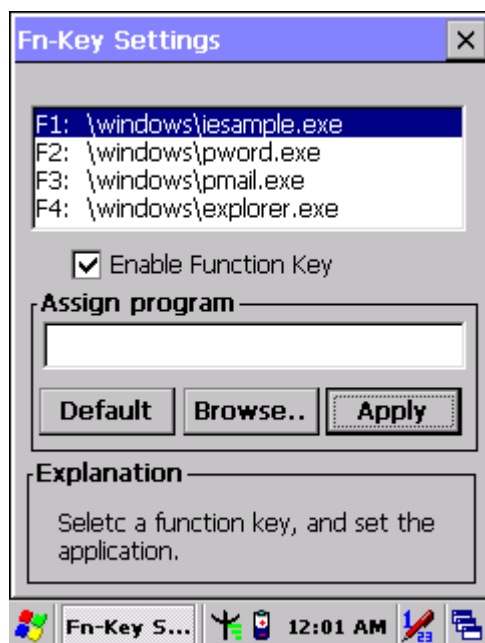


Figure 3-42 Fn-Key Settings



Figure 3-43 Fn-Key Settings

### 3.2.5 Date/Time


ICON	ITEM & FUNCTION
 Date/Time	<ul style="list-style-type: none"> <li>• <b>“Date/Time” Tab :( Figure 2-14)</b></li> </ul>
	<ul style="list-style-type: none"> <li>✓ Please see the detail information of <b>2.5.1 Setting Time and Date</b></li> </ul>

Table 3-25 Date/Time

### 3.2.6 Dialing Properties


ICON	ITEM & FUNCTION
 Dialing	<ul style="list-style-type: none"> <li>• <b>“Dialing Properties” Tab :( Figure 3-44)</b></li> </ul>
	<ul style="list-style-type: none"> <li>✓ In the <b>When dialing from</b> list, select the <b>“Location”</b> where you want to change settings.(<b>Figure 3-45</b>)</li> <li>✓ To create a new location, select <b>“New”</b>. Enter the name of the location, and then select <b>“OK”</b>.(<b>Figure 3-46</b>)</li> <li>✓ Enter or edit the area code and local country code as needed.</li> <li>✓ In <b>Dial using</b>, select <b>“Tone dialing”</b> or <b>“Pulse dialing”</b>. Most phone lines are tone.</li> <li>✓ To automatically disable call waiting, select <b>“Disable call waiting by dialing”</b>, select the appropriate number sequence in the list, or enter a new sequence.</li> </ul> <ul style="list-style-type: none"> <li>• <b>Editing dialing patterns (Figure 3-47)</b></li> <li>✓ Using the codes listed in the topic; revise the dialing patterns as needed.</li> </ul> <p><b>Notes:</b></p> <ul style="list-style-type: none"> <li>■ If you need to use character other than the ones listed here, use manual dialing.</li> <li>■ Hyphens and spaces in dialing strings are ignored.</li> <li>■ Some modems may not respond to the following characters, even though your device lets you add them to the dial string.</li> </ul>

Table 3-26 Dialing properties



Figure 3-44 Dialing Properties



Figure 3-45 Dialing Properties



Figure 3-46 Dialing Properties

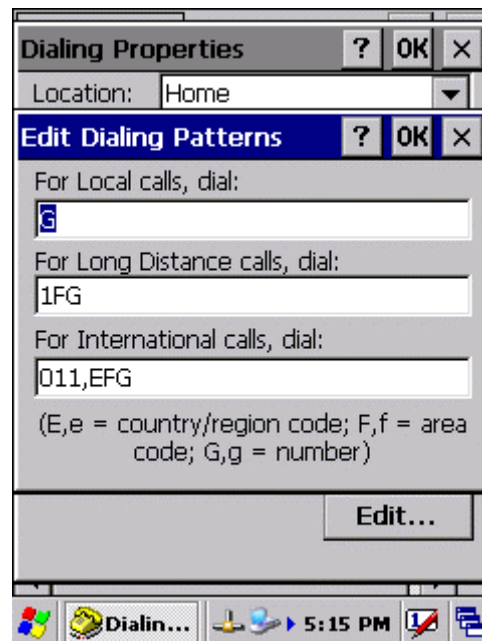


Figure 3-47 Dialing Properties

### 3.2.7 Display Properties


ICON	ITEM & FUNCTION
 Display	<ul style="list-style-type: none"> <li data-bbox="336 459 879 495">• <b>“Background” Tab</b> :( <b>Figure 3-48</b>)</li> <li data-bbox="336 510 1182 591">✓ From the <b>“Image”</b> list, select an image you want as the background of the desktop.(<b>Figure 3-49</b>)</li> <li data-bbox="336 607 1023 687">✓ To locate an image in another folder, select <b>“Browse”</b>.(<b>Figure 3-50</b>)</li> <li data-bbox="336 703 1246 784">✓ To have the image cover the entire background, select <b>“Tile image on background”</b></li> <li data-bbox="336 815 863 851">• <b>“Appearance” Tab</b>(<b>Figure 3-51</b>)</li> <li data-bbox="336 866 991 902">✓ Change the color scheme :( <b>Figure 3-52</b>)             <ul style="list-style-type: none"> <li data-bbox="376 913 1031 949">➤ From the <b>“Scheme”</b> list, select a scheme.</li> <li data-bbox="376 965 1158 1046">➤ View your choice in the preview box. If you like the scheme, select <b>“Apply”</b>.</li> </ul> </li> <li data-bbox="336 1061 847 1097">✓ Create a custom color scheme:             <ul style="list-style-type: none"> <li data-bbox="376 1108 1031 1144">➤ From the <b>“Item”</b> list, select a display item.</li> <li data-bbox="376 1160 1214 1240">➤ From the <b>“Basic colors”</b> list, select a color, and select <b>“OK”</b>.</li> <li data-bbox="376 1256 1110 1292">➤ View your color selection(s) in the Preview box.</li> <li data-bbox="376 1308 943 1344">➤ To save the scheme, select <b>“Save”</b>.</li> <li data-bbox="376 1359 1222 1440">➤ In the <b>“Save this color scheme as”</b> box, enter a name for the scheme, and select <b>“OK”</b>.</li> <li data-bbox="376 1456 655 1491">➤ Select <b>“Apply”</b>.</li> </ul> </li> </ul>

Table 3-27 Display properties

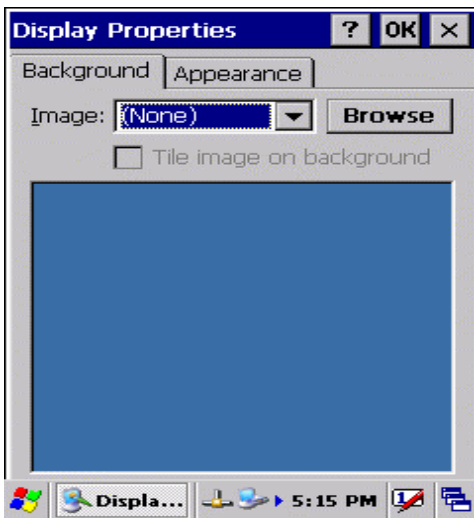


Figure 3-48 Display properties



Figure 3-49 Display properties

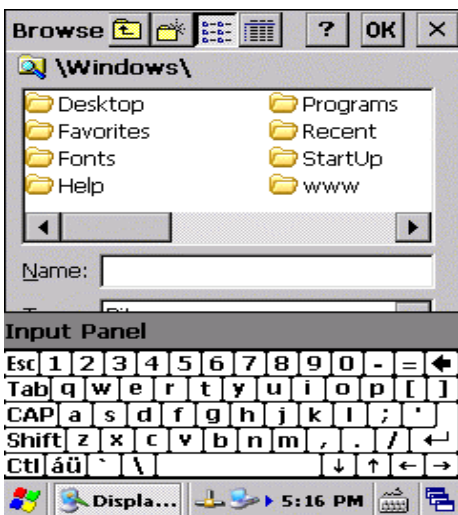


Figure 3-50 Display properties

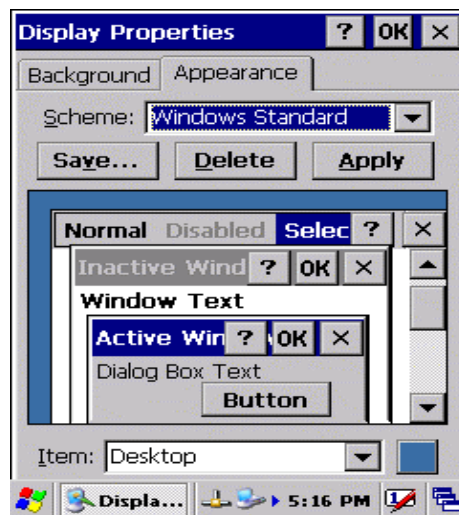


Figure 3-51 Display properties

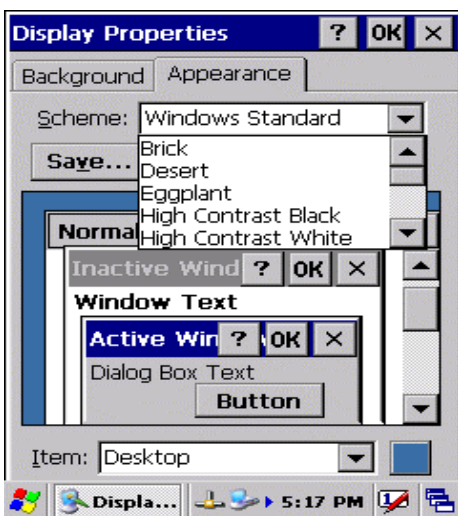


Figure 3-52 Display properties

### 3.2.8 Input Panel


ICON	ITEM & FUNCTION
 Input Panel	<ul style="list-style-type: none"> <li>• <b>“Input panel” Tab :</b> ( <b>Figure 3-53</b>)                         <ul style="list-style-type: none"> <li>✓ Select the input method you want to change.</li> <li>✓ To change the <b>Soft Keyboard Options</b> , tap <b>“Option”</b> ( <b>Figure 3-54</b>) .</li> </ul> </li> <li>• <b>“Options” Tab :</b> <ul style="list-style-type: none"> <li>✓ Change the soft keyboard options as desired, selecting from:                                 <ul style="list-style-type: none"> <li>➢ Large or small keys</li> <li>➢ Using gestures for space, black-space shift, and enter.</li> </ul> </li> <li>✓ To exit the <b>soft keyboard Options</b>, press <b>“OK”</b> on the control bar, or press the <b>&lt;Enter&gt;</b> key on the keypad.</li> <li>✓ To exit the <b>Input Panel</b>, press <b>“OK”</b> on the control bar, or press the <b>&lt;Enter&gt;</b> key on the keypad.</li> </ul> </li> </ul>

Table 3-28 Display properties

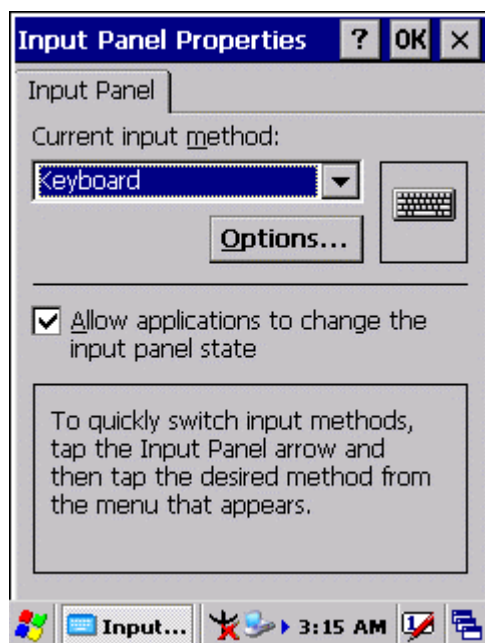


Figure 3-53 Input Panel Properties

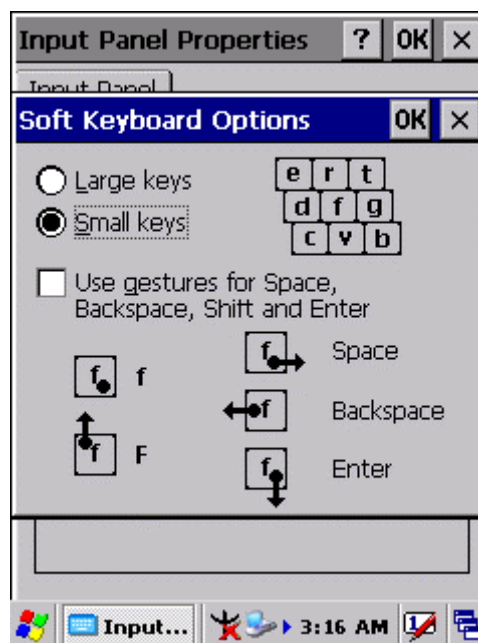


Figure 3-54 Input Panel Properties

### 3.2.9 Internet Options


ICON	ITEM & FUNCTION
 Internet Options	<ul style="list-style-type: none"> <li>• <b>“General” Tab :( Figure 3-55)</b></li> </ul>
	<ul style="list-style-type: none"> <li>✓ Type in the URL of desired start page and the desired search engine. You also change the <b>Cache Size, clear the Cache</b> and <b>Clear the History..</b></li> </ul>
	<ul style="list-style-type: none"> <li>• <b>“Connection” Tab :( Figure 3-56)</b></li> </ul>
	<ul style="list-style-type: none"> <li>✓ Modify the network access setting as desired.</li> </ul>
	<ul style="list-style-type: none"> <li>• <b>“Security” Tab (Figure 3-57)</b></li> </ul>
<ul style="list-style-type: none"> <li>✓ Modify the security settings as desired. You can enable any of the following by tapping the checkbox:               <ul style="list-style-type: none"> <li>➤ Allow cookies</li> <li>➤ Allow TLS 1.0 security</li> <li>➤ Allow SSL 2.0 security</li> <li>➤ Allow SSL 3.0 security</li> <li>➤ Warm when switching across secure and insecure areas.</li> </ul> </li> </ul>	
<ul style="list-style-type: none"> <li>• <b>“Advanced” Tab (Figure 3-58)</b></li> </ul>	
<ul style="list-style-type: none"> <li>✓ Modify the security settings as desired. You can enable any of the following by tapping the checkbox:               <ul style="list-style-type: none"> <li>➤ Display Image in pages</li> <li>➤ Play sounds in pages</li> <li>➤ Enable scripting</li> <li>➤ Display a notification about every script error</li> <li>➤ Underline links-                   <ul style="list-style-type: none"> <li>Never</li> <li>Always</li> <li>Hover</li> </ul> </li> </ul> </li> </ul>	

Table 3-29 Internet Options



Figure 3-55 Internet Settings

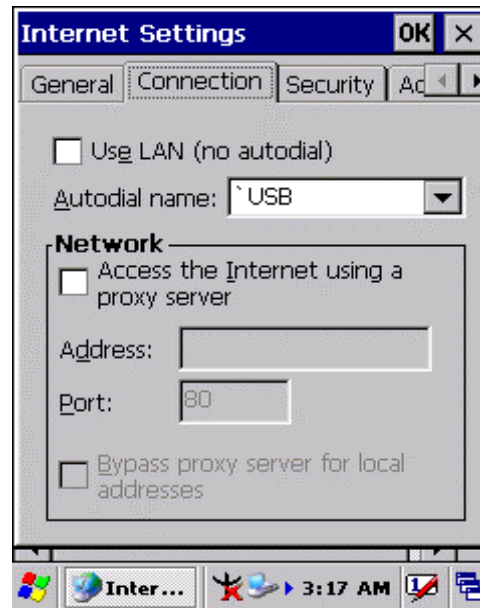


Figure 3-56 Internet Settings

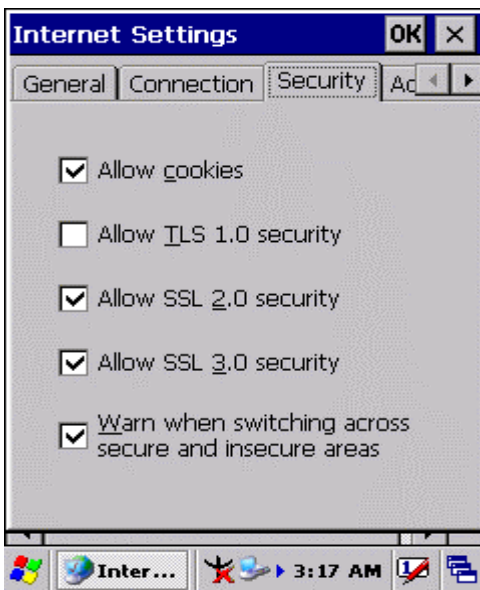


Figure 3-57 Internet Settings

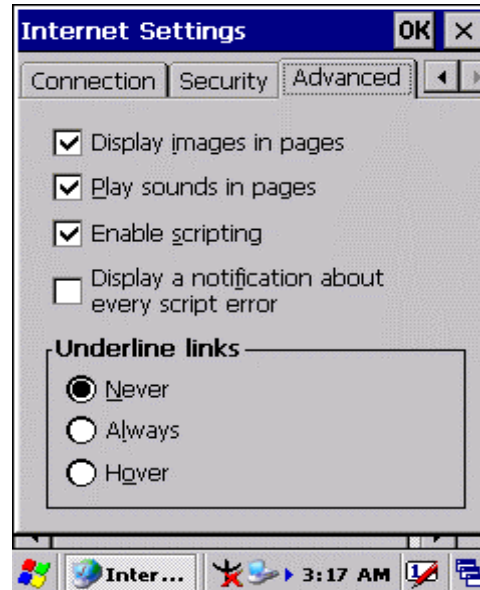


Figure 3-58 Internet Settings



### 3.2.10 Keyboard


ICON	ITEM & FUNCTION
 Keyboard	<ul style="list-style-type: none"> <li>• <b>“Repeat” Tab :</b> ( Figure 3-59)             <ul style="list-style-type: none"> <li>✓ To change the amount of time between depressions before repetition starts, adjust the <b>Repeat delay</b> slider</li> <li>✓ To change the repeat rate, adjust the <b>Repeat rate</b> slider.</li> <li>✓ Test your new setting.</li> <li>✓ Tap <b>“OK”</b> to exit the <b>“Keyboard”</b> Tab.</li> </ul> </li> </ul>

Table 3-30 Keyboard

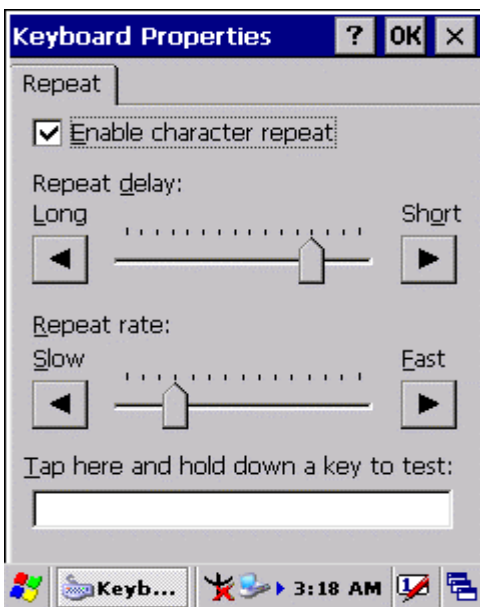



Figure 3-59 Keyboard Properties

### 3.2.11 Network and Dial-up Connections

ICON	ITEM & FUNCTION
 Network and Dial-up Co...	<ul style="list-style-type: none"> <li>• <b>“Connection” Tab :</b></li> <li>✓ To create a <b>“Dial-up Connection”</b>:             <ul style="list-style-type: none"> <li>➤ Double-tap the <b>“Make New connection”</b>.</li> <li>➤ In the <b>“Make New Connection”</b> dialog box, enter a name for the connection.</li> <li>➤ Select <b>“Dial-Up Connection”</b>.</li> <li>➤ Select the <b>“Next”</b> button.</li> <li>➤ Select the modem you want use.</li> <li>➤ Select <b>“Configure”</b></li> <li>➤ Under <b>“Connection Reference”</b>, use the default settings provided. If you can't connect using these settings, see your ISP or network administrator for specific information. If you want to always enter a phone number before connecting, Select <b>“Manual Dial”</b>. Select <b>“OK”</b>.</li> <li>➤ Select <b>“TCP/IP Settings”</b>. In the <b>“General”</b> tab, ensure <b>“Use Server-assigned IP address”</b> is selected. In the <b>“Name Servers”</b> tab, ensure <b>“Use Server-assigned addresses”</b> is selected, and select <b>“OK”</b>. If you are unable to connect with these default settings, see your ISP or network administrator for specific TCP/IP information.</li> <li>➤ Select the <b>“Next”</b> button and type the telephone number.</li> <li>➤ Select the <b>“Finish”</b> button.</li> </ul> <p>The connection you just created appears as an icon in the <b>“Network and Dial-up Connections”</b> folder.</p> </li> <li>✓ Set up a <b>point-to-Point Protocol(PPP)</b> account with an ISP and obtain the following information:             <ul style="list-style-type: none"> <li>➤ Access telephone number</li> <li>➤ User name</li> <li>➤ Password</li> </ul> </li> </ul>

Once you have established an account, create a new connection on your device. When creating this connection, you should be able to use all of the default TCP/IP settings provided in the Make New Connection Wizard. If you can't connect using the default settings, contact your ISP or access your ISP's Web site for specific TCP/IP information as well as primary and secondary DNS address.

- ✓ **Modify connection setting**
  - Select **Start > Settings > Network and Dialup Connections**
  - Select the icon for connection settings you want to modify.
  - Select **File > Properties**, or double- tap the appropriate icon.
  - Select desired options. There may be additional settings that depend on the connection. To modify, select the icon and select the icon and select **Advanced Settings...** from the menu.

Table 3-31 **Network and Dial-up Connections**

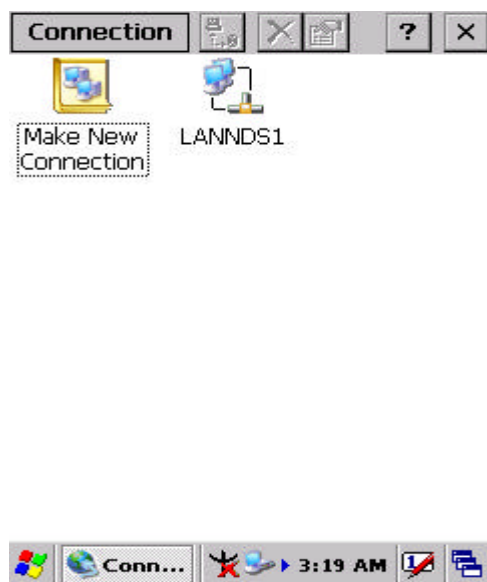


Figure 3-60 **Network and Dial-up Connections**

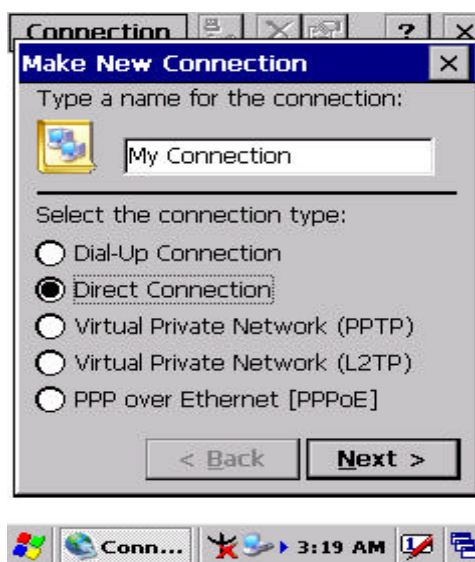


Figure 3-61 **Network and Dial-up Connections**

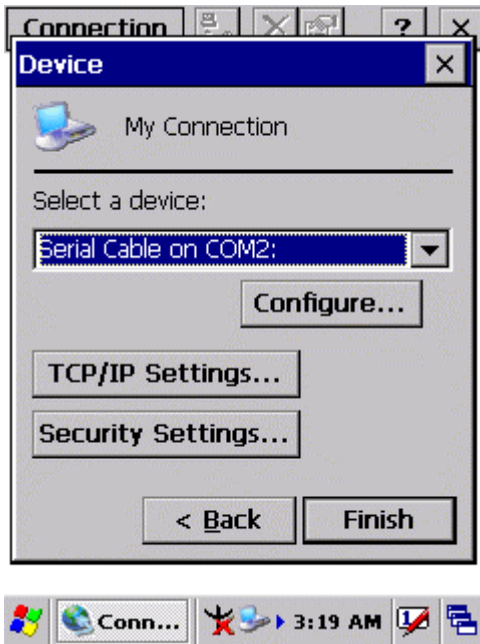


Figure 3-62 Network and Dial-up Connections

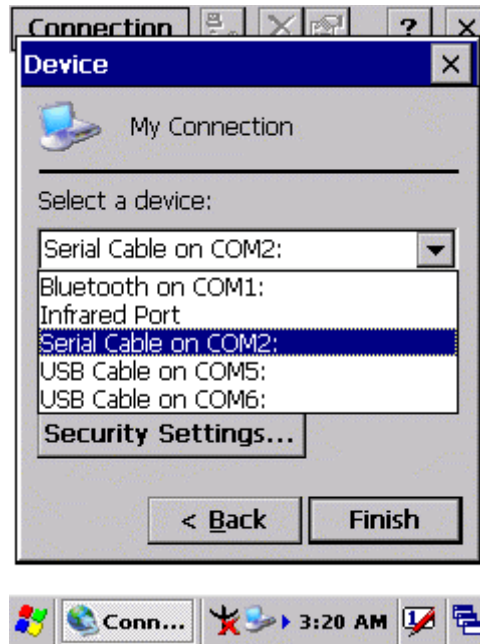


Figure 3-63 Network and Dial-up Connections

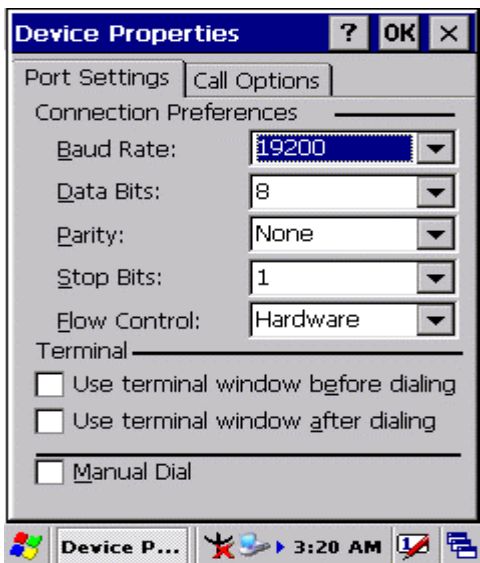


Figure 3-64 Network and Dial-up Connections

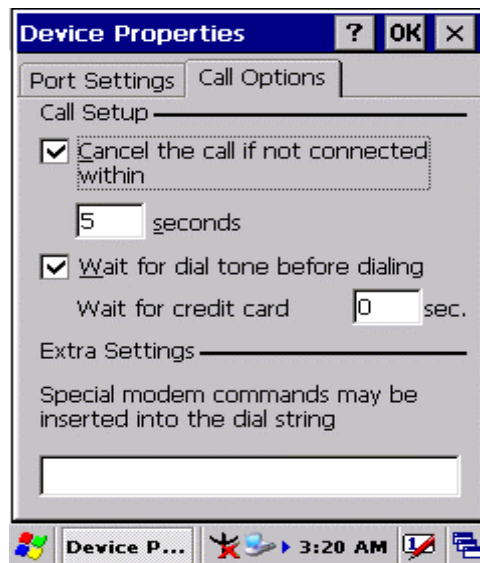


Figure 3-65 Network and Dial-up Connections

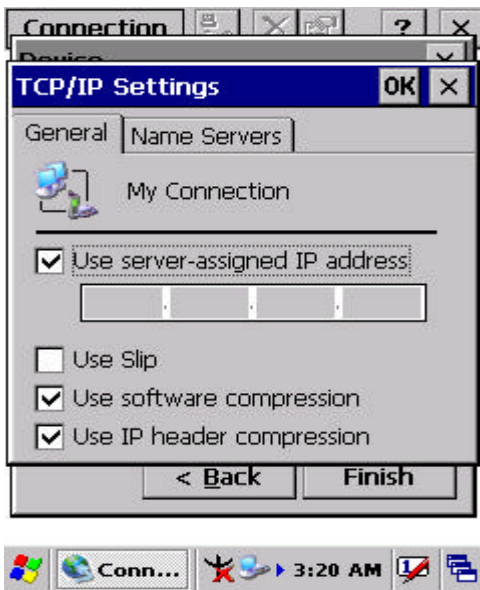


Figure 3-66 Network and Dial-up Connections

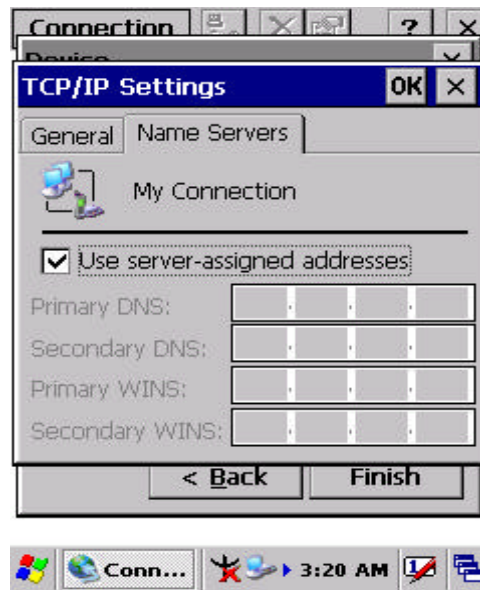


Figure 3-67 Network and Dial-up Connections

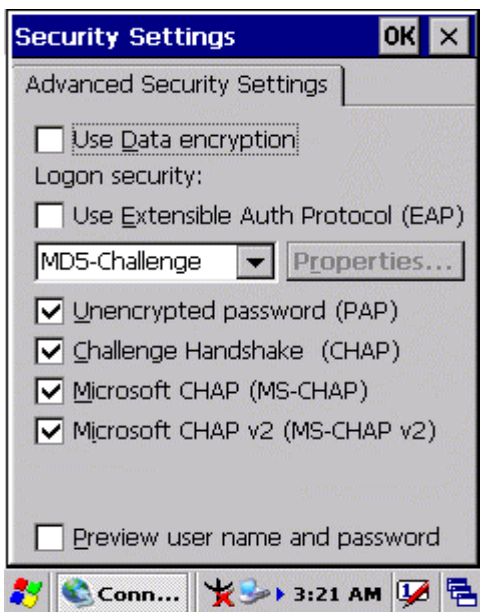


Figure 3-68 Network and Dial-up Connections

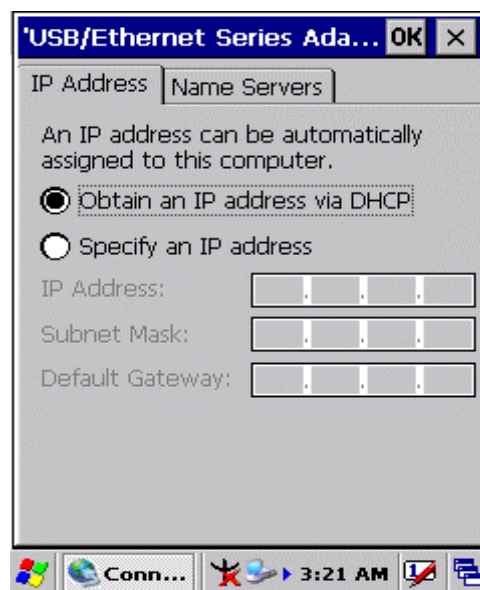


Figure 3-69 Network and Dial-up Connections