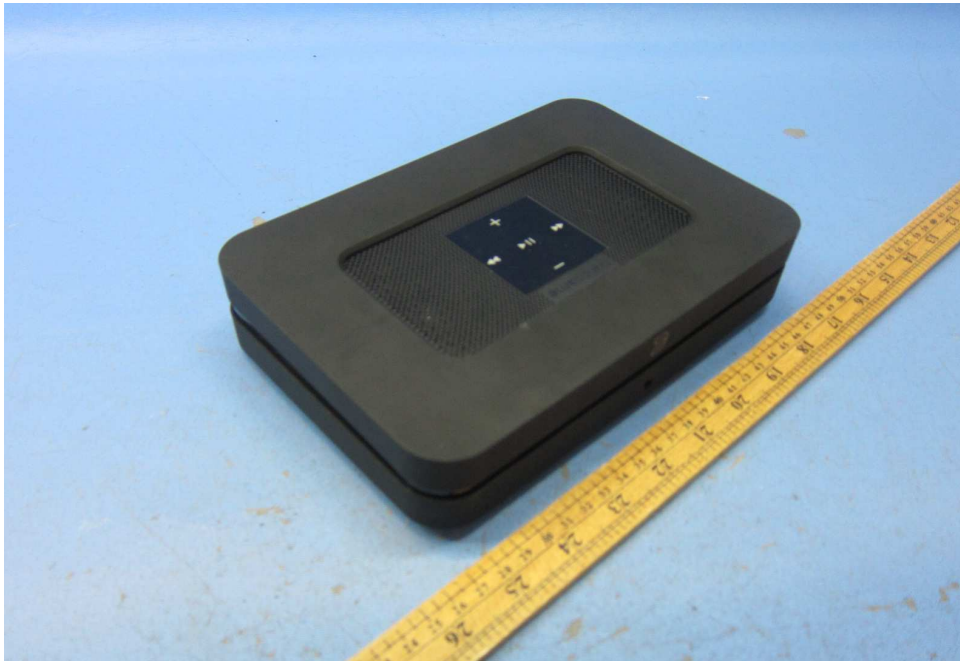


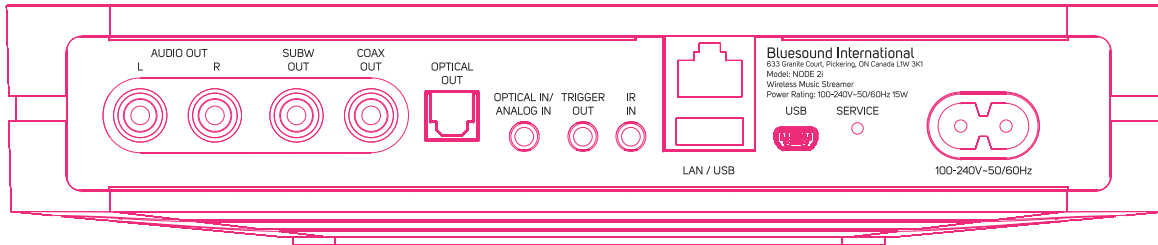
Equipment Photographs

(External)



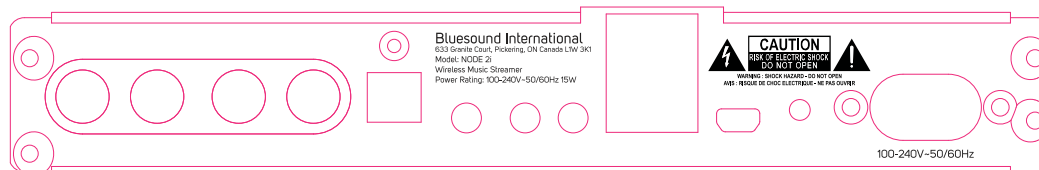
A black rectangular frame with a white center. The frame has a thick, multi-layered border. The text "Label Location" is centered within the white area.

Label Location



Node 2i - Rear panel plate

Finish: Black painted
Silkcreen: Pantone Gray 424C



Node 2i - Rear panel bracket (Behind the rear panel plate)



Finish: Molded Black
Silkcreen: Pantone Gray 424C



Node 2i - Nameplate

Material: 0.3T Clear PC/PET
Process:
1. Mask print Pantone Black 3 at back and apply 3M Adhesive Tape
2. Negative Silkscreen Print matte Pantone Black 3 at front

Location: On bottom panel

1	Change power rating from 0.2A to 15W	7	20180723	KK
1	Increase the height of safety marks	6	20180705	KK
1	Updated ETL control number to 5012029	5	20180629	KK
1	Removed EAC logo	4	20180611	KK
1	Added AC sign “~” to the AC voltage text	3	20180523	KK
1	Added EAC logo	2	20180508	KK
1	INITIAL RELEASE	1	20180406	KK
ISSUE NO.	REVISION HISTORY	REV NO.	DATE	BY
<div><div><div>NAD ELECTRONICS INT’L 633 GRANITE COURT, PICKERING ONTARIO L1W 3K1, CANADA TEL : (905) 831 63333</div></div><div><div>LENBROOK GROUP</div></div></div> <div>Copyright © 1998-2017 NAD, a member of the Lenbrook. All Rights Reserved.</div>		MODEL - ARTWORK - ISSUE NUMBER		OEM PART NUMBER
		NODE 2i		
ALLOWABLE TOLERANCE LINEAR ANGULAR .0 = +0.1 ± 0.15° .00 = ±0.05 .000= ±0.01		SCALE 1 : 1	STATUS FOR PP/MP	DATE Apr 6, 2018
		UNITS Millimeters	FINISH AS SHOWN	MODEL NODE 2i
OUTPUT PRINT DO NOT SCALE REVISE ONLY ON CAD SYSTEM		SS PREPARATION - RIGHT READING EMULSION SIDE UP	PRINTING AS SHOWN	PART NAME Product Marking
Prepared By Kay Kwong	Checked By Jimmy Reyes	Director Development & Manufacturing Taresh Vadgama	PRINTING TOOL NUMBER	CAD FILE NAME N2i_PM_20180723.ai