

# Item No.: M-W1901P

## WIRELESS DOOR ALARM SENSOR

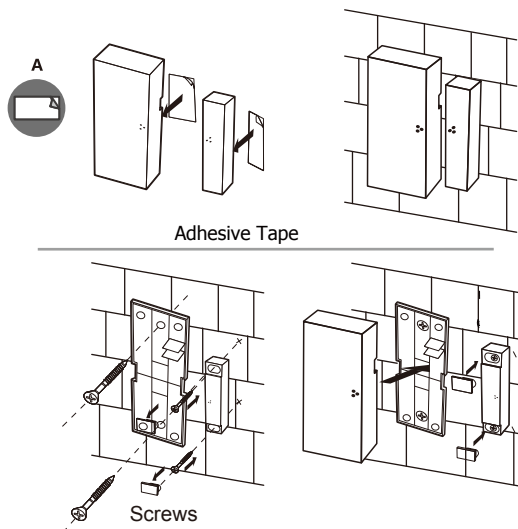
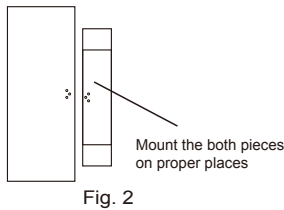
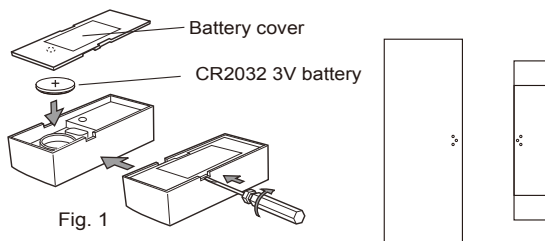
### Features:

1. Wireless chime and door/window sensor, for entry chime/alarm of visitors or intruders.
2. Long remote distance, providing a max.600 ft(200m) range, depending on actual environment.
3. 32 ring tones for easy choice and 4-level volume control.
4. Door sensor is small size, can be installed on door sash or window sash.
5. Self-learning codes allow users to add more additional door sensors and chimes.
6. Bell Push uses 1xCR2032 3V Battery(included).

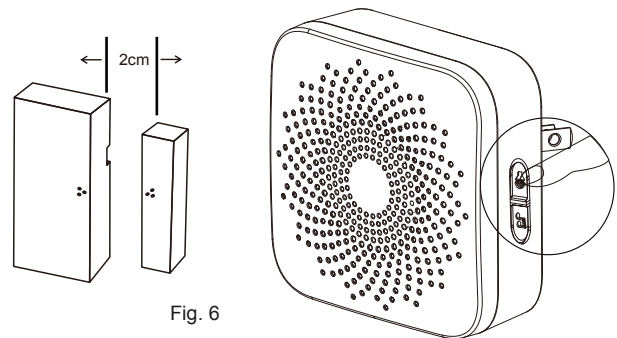
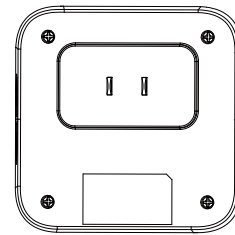
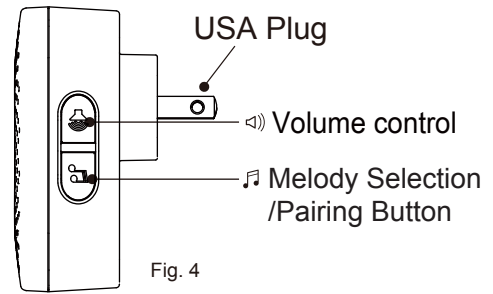
### Installation

The bell push can be mounted on door frame.  
The chime can be put on table or put to the strip.

### Magnet



### Receiver unit



#### FCC COMPLIANCE STATEMENT:

This device complies with part 15 of the FCC Rules.

Operation is subject to the following two conditions:

- (1) This device may not cause harmful interference, and
- (2) this device must accept any interference received, including interference that may cause undesired operation.

Note: This equipment has been tested and found to comply with the limits for a Class B digital device, pursuant to Part 15 of the FCC Rules. These limits are designed to provide reasonable protection against harmful interference in a residential installation. This equipment generates, uses and can radiate radio frequency energy and, if not installed and used in accordance with the instructions, may cause harmful interference to radio communications.

However, there is no guarantee that interference will not occur in a particular installation. If this equipment does cause harmful interference to radio or television reception, which can be determined by turning the equipment off and on, the user is encouraged to try to correct the interference by one or more of the following measures:

Reorient or relocate the receiving antenna.

Increase the separation between the equipment and receiver.

Connect the equipment into an outlet on a circuit different from that to which the receiver is connected.

Consult the dealer or an experienced radio/TV technician for help.

Warning: Changes or modifications to this unit not expressly approved by the part responsible for compliance could void the user's authority to operate the equipment.

FCC Radiation Exposure Statement

The device has been evaluated to meet general RF exposure requirement.

The device can be used in portable exposure condition without restriction.