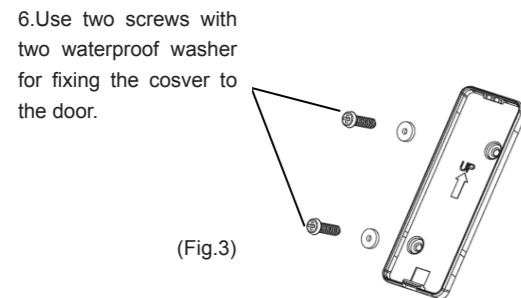
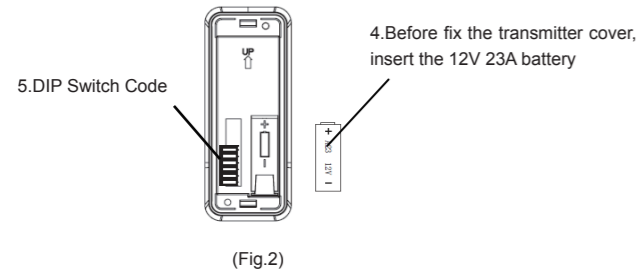
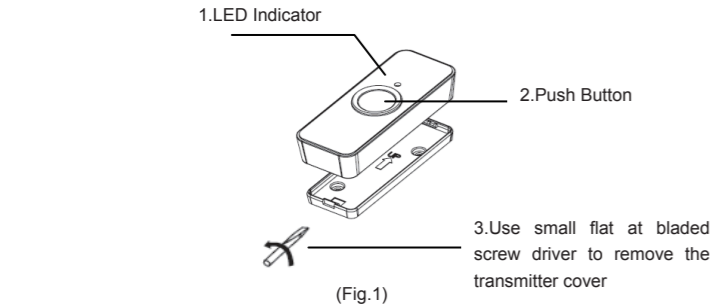


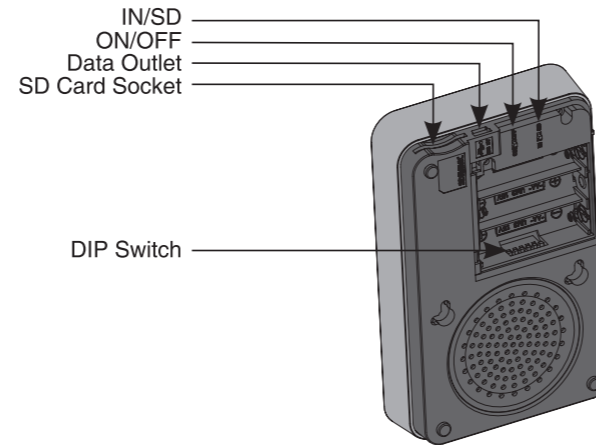
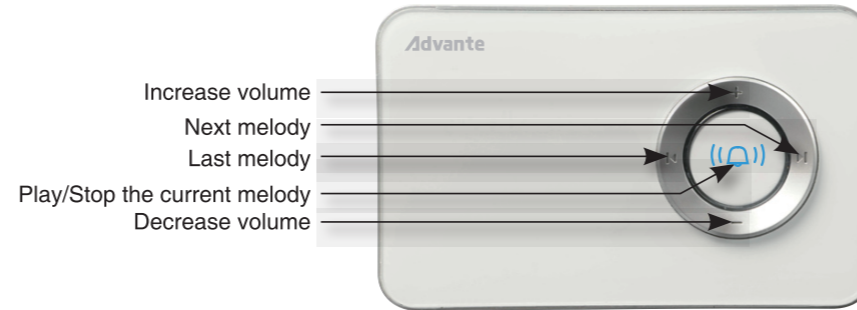
### Features:

1. MP3 Door Chime which can download music from computer, available format is MP3.
2. Built-in 32 sounds with 24 polyphonic.
3. DIP Switch code to avoid interference.
4. LED indicator in the Transmitter and the Receiver.
5. Volume level control.
6. Waterproof Transmitter requires 1 x 12V 23A battery(supplied), Receiver unit requires 3 x 1.5V AA batteries(not supplied), or use 5V AC Adapter (not supplied).
7. 100M operating range in the open air.

### Description of Bell Push:



### Description of the chime



### Chime using

- Melodies : To use the melodies in the SD card, put the switch inside the chime on «SD». To use programmed melodies, put the switch on «IN».
- Melodies adjustment : Choose the melody with the arrows ▶ and ◀ on the chime. Listen them and push the central button to select one.
- Volume adjustment : Choose the level sound with arrows + and - on the chime.
- Switch off : Put the switch inside the chime on «OFF».
- Channel Setting : To avoid interference from other wireless devices, push the DIP Switch code to same position for both Chime and Push.
- Data Outlet : Use the cable connected to computer, to download the MP3 musics in the computer.

### TX:

Changes or modifications not expressly approved by the party responsible for compliance could void the user's authority to operate the equipment.

This device complies with Part 15 of the FCC Rules.

Operation is subject to the following two conditions:

- 1.This device may not cause harmful interference, and
- 2.This device must accept any interference received, including interference that may cause undesired operation.

### RX:

NOTE: This equipment has been tested and found to comply with the limits for a Class B digital device, pursuant to Part 15 of the FCC Rules. These limits are designed to provide reasonable protection against harmful interference in a residential installation. This equipment generates, uses and can radiate radio frequency energy and, if not installed and used in accordance with the instructions, may cause harmful interference to radio communications. However, there is no guarantee that interference will not occur in a particular installation.

If this equipment does cause harmful interference to radio or television reception, which can be determined by turning the equipment off and on, the user is encouraged to try to correct the interference by one or more of the following measures:

- Reorient or relocate the receiving antenna.
- Increase the separation between the equipment and receiver.
- Connect the equipment into an outlet on a circuit different from that to which the receiver is connected.
- Consult the dealer or an experienced radio/TV technician for help.)