

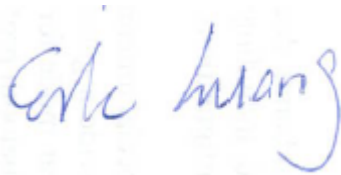
# FCC SAR Test Report

APPLICANT : Xplore Technologies Corp.  
EQUIPMENT : Wireless Modules  
BRAND NAME : Xplore Technologies  
MODEL NAME : MC7700  
FCC ID : Q2GMC7700  
STANDARD : FCC 47 CFR Part 2 (2.1093)  
ANSI/IEEE C95.1-1992  
IEEE 1528-2003  
FCC OET Bulletin 65 Supplement C (Edition 01-01)

The product was installed into Rugged Tablet PC (Brand Name: Xplore Technologies, Model Name: iX104C5) during test.

The product was completely tested on Mar. 22, 2013. We, SPORTON INTERNATIONAL INC., would like to declare that the tested sample has been evaluated in accordance with the procedures and shown the compliance with the applicable technical standards.

The test results in this report apply exclusively to the tested model / sample. Without written approval of SPORTON INTERNATIONAL INC., the test report shall not be reproduced except in full.



Reviewed by: Eric Huang / Vice Manager



Approved by: Jones Tsai / Manager



**SPORTON INTERNATIONAL INC.**

No. 52, Hwa Ya 1<sup>st</sup> Rd., Hwa Ya Technology Park, Kwei-Shan Hsiang, Tao Yuan Hsien, Taiwan, R.O.C.



Table of Contents

1. Statement of Compliance ..... 4
2. Administration Data ..... 5
2.1 Testing Laboratory..... 5
2.2 Applicant ..... 5
2.3 Manufacturer ..... 5
2.4 Application Details..... 5
3. General Information ..... 6
3.1 Description of Equipment Under Test (EUT) ..... 6
3.2 Maximum RF output power among production units ..... 7
3.3 Applied Standard..... 10
3.4 Device Category and SAR Limits ..... 10
3.5 Test Conditions..... 10
4. Specific Absorption Rate (SAR)..... 11
4.1 Introduction ..... 11
4.2 SAR Definition..... 11
5. SAR Measurement System..... 12
5.1 E-Field Probe ..... 12
5.2 Data Acquisition Electronics (DAE) ..... 14
5.3 Robot ..... 14
5.4 Measurement Server..... 14
5.5 Phantom..... 15
5.6 Device Holder..... 16
5.7 Data Storage and Evaluation ..... 17
5.8 Test Equipment List ..... 19
6. Tissue Simulating Liquids..... 20
7. SAR System Verification ..... 22
7.1 Purpose of System Performance check ..... 22
7.2 System Setup..... 22
7.3 SAR System Verification Results ..... 23
8. EUT Testing Position ..... 24
9. Measurement Procedures ..... 24
9.1 Spatial Peak SAR Evaluation ..... 24
9.2 Power Reference Measurement..... 25
9.3 Area & Zoom Scan Procedures..... 25
9.4 Volume Scan Procedures..... 26
9.5 SAR Averaged Methods ..... 26
9.6 Power Drift Monitoring..... 26
10. Conducted RF Output Power (Unit: dBm)..... 27
11. Exposure Positions Consideration..... 42
12. SAR Test Results ..... 44
12.1 Test Records for Body SAR Test ..... 44
12.2 Repeated SAR Measurement ..... 47
12.3 Highest SAR Plot ..... 48
12.4 Simultaneous Multi-band Transmission Analysis..... 56
12.5 Co-location Transmission Analysis..... 57
13. Uncertainty Assessment ..... 59
14. References..... 62
Appendix A. Plots of System Performance Check
Appendix B. Plots of SAR Measurement
Appendix C. DASYS Calibration Certificate
Appendix D. Test Setup Photos



### Revision History

REPORT NO.	VERSION	DESCRIPTION	ISSUED DATE
FA330705	Rev. 01	Initial issue of report	Apr. 16, 2013



1. Statement of Compliance

The maximum results of Specific Absorption Rate (SAR) found during testing for **Xplore Technologies Corp. Wireless Modules, Xplore Technologies, MC7700** are as follows.

<Highest Reported standalone SAR Summary>

Frequency Band	Exposure Position	Reported 1g-SAR (W/kg)	Equipment Class	Highest Reported 1g-SAR (W/kg)
GPRS850	Body (0 cm Gap)	1.22	PCB	1.22
GPRS1900	Body (0 cm Gap)	0.50		
WCDMA Band V	Body (0 cm Gap)	0.54		
WCDMA Band II	Body (0 cm Gap)	0.43		
LTE Band 17	Body (0 cm Gap)	0.42		
LTE Band 4	Body (0 cm Gap)	0.99		

<Highest Simultaneous transmission SAR>

Frequency Band	Equipment Class	Exposure Position	Highest Reported Simultaneous Transmission 1g-SAR (W/kg)
GPRS850	PCB	Edge1 (0cm Gap)	1.39
WLAN 2.4GHz Band	DTS		
2.4GHz Bluetooth	DSS		

This device is in compliance with Specific Absorption Rate (SAR) for general population/uncontrolled exposure limits (1.6 W/kg) specified in FCC 47 CFR part 2 (2.1093) and ANSI/IEEE C95.1-1992, and had been tested in accordance with the measurement methods and procedures specified in IEEE 1528-2003 and FCC OET Bulletin 65 Supplement C (Edition 01-01).



## 2. Administration Data

### 2.1 Testing Laboratory

Test Site	SPORTON INTERNATIONAL INC.
Test Site Location	No. 52, Hwa Ya 1 <sup>st</sup> Rd., Hwa Ya Technology Park, Kwei-Shan Hsiang, Tao Yuan Hsien, Taiwan, R.O.C. TEL: +886-3-327-3456 FAX: +886-3-328-4978

### 2.2 Applicant

Company Name	Xplore Technologies Corp.
Address	14000 Summit Road Suite 900, Austin, Texas, 78728 USA

### 2.3 Manufacturer

Company Name	Sierra Wireless Inc.
Address	13811, Wireless Way, Richmond, British Columbia, Canada

### 2.4 Application Details

Date of Start during the Test	Mar. 12, 2013
Date of End during the Test	Mar. 22, 2013



3. General Information

3.1 Description of Equipment Under Test (EUT)

Product Feature & Specification	
EUT	Wireless Modules
Brand Name	Xplore Technologies
Model Name	MC7700
FCC ID	Q2GMC7700
IMEI Code	012626000233302
TX Frequency	GSM850: 824.2 MHz ~ 848.8 MHz GSM1900: 1850.2 MHz ~ 1909.8 MHz WCDMA Band V: 826.4 MHz ~ 846.6 MHz WCDMA Band II: 1852.4 MHz ~ 1907.6 MHz LTE Band 17: 706.5 MHz ~ 713.5 MHz LTE Band 4: 1710.7 MHz ~ 1754.3 MHz
Uplink Modulations	GSM: GMSK GPRS: GMSK EDGE: GMSK / 8PSK WCDMA (Rel 99): QPSK HSDPA (Rel 6): QPSK HSUPA (Rel 6): QPSK LTE: QPSK, 16QAM
Remark:	<ol style="list-style-type: none"> <li>The above EUT's information was declared by manufacturer. Please refer to the specifications or user's manual for more detailed description.</li> <li>Voice call is not supported.</li> <li>This device WLAN 2.4GHz supports hotspot operation and WLAN5GHz does not support hotspot operation.</li> <li>WLAN/Bluetooth module is also integrated into this host. Additional WLAN SAR testing was performed for simultaneous transmission analysis and WLAN/Bluetooth power is referred to Sprotn FCC SAR Report (FCC ID: Q2GI6205-XPL, Report No: FA330725-01).</li> </ol>

Host Product Feature & Specification	
Host Name	Rugged Tablet PC
Brand Name	Xplore Technologies
Model Name	iX104C5
Manufacturer	Wistron Corporation 21F, 88, Sec.1, Hsin Tai Wu Rd., Hsichin, Taipei Hsien 221, Taiwan, R.O.C.
Antenna Type	WWAN: PIFA Antenna WLAN: PIFA Antenna Bluetooth: Fixed Internal Antenna



**3.2 Maximum RF output power among production units**

Band	average power (dBm)	
	GSM 850	GSM 1900
Output Power Status	Normal	Normal
GPRS/EDGE (GMSK, 1 Tx slot)	33	30
GPRS/EDGE (GMSK, 2 Tx slots)	33	30
EDGE (GMSK, 3 Tx slots)	29.5	27
EDGE (GMSK, 4 Tx slots)	25.5	25.5
EDGE (8PSK, 1 Tx slot)	28	26
EDGE (8PSK, 2 Tx slots)	28	26
EDGE (8PSK, 3 Tx slots)	28	26
EDGE (8PSK, 4 Tx slots)	28	26

Band	average power(dBm)	
	WCDMA Band V	WCDMA Band II
Output Power Status	Normal	Normal
RMC 12.2Kbps	24	24
HSDPA Subtest-1	24	24
HSUPA Subtest-5	24	24

LTE Band 17				
average power(dBm)				
Modulation	BW (MHz)	RB size	Target MPR	Normal
QPSK	10	≤ 12	0	24
QPSK	10	> 12	1	23
16QAM	10	≤ 12	1	23
16QAM	10	> 12	2	22
QPSK	5	≤ 8	0	24
QPSK	5	> 8	1	23
16QAM	5	≤ 8	1	23
16QAM	5	> 8	2	22



LTE Band 4				
average power(dBm)				
Modulation	BW (MHz)	RB size	Target MPR	Normal
QPSK	20	≤ 18	0	24
QPSK	20	> 18	1	23
16QAM	20	≤ 18	1	23
16QAM	20	> 18	2	22
QPSK	15	≤ 16	0	24
QPSK	15	> 16	1	23
16QAM	15	≤ 16	1	23
16QAM	15	> 16	2	22
QPSK	10	≤ 12	0	24
QPSK	10	> 12	1	23
16QAM	10	≤ 12	1	23
16QAM	10	> 12	2	22
QPSK	5	≤ 8	0	24
QPSK	5	> 8	1	23
16QAM	5	≤ 8	1	23
16QAM	5	> 8	2	22

**Remark:**

1. By design, maximum LTE RF power of smaller supported bandwidth does not exceed the RF power of largest supported bandwidth; the information is included in “tune-up procedure” exhibit





The table below summarized necessary items addressed in KDB 941225 D05 v02.

FCC ID	Q2GMC7700											
EUT	Wireless Modules											
Operating Frequency Range of each LTE transmission band	LTE Band 17: 706.5 MHz ~ 713.5 MHz LTE Band 4: 1710.7 MHz ~ 1754.3 MHz											
Channel Bandwidth	LTE Band 17: 5MHz, 10MHz LTE Band 4: 1.4MHz, 3MHz, 5MHz, 10MHz, 15MHz, 20MHz											
Transmission (H, M, L) channel numbers and frequencies in each LTE band												
Band 17												
	Bandwidth 5 MHz						Bandwidth 10 MHz					
	Channel #			Frequency (MHz)			Channel #			Frequency (MHz)		
L	23755			706.5			23780			709		
M	23790			710			23790			710		
H	23825			713.5			23800			711		
LTE Band 4												
	Bandwidth 1.4 MHz		Bandwidth 3 MHz		Bandwidth 5 MHz		Bandwidth 10 MHz		Bandwidth 15 MHz		Bandwidth 20 MHz	
	Ch. #	Freq. (MHz)	Ch. #	Freq. (MHz)	Ch. #	Freq. (MHz)	Ch. #	Freq. (MHz)	Ch. #	Freq. (MHz)	Ch. #	Freq. (MHz)
L	19957	1710.7	19965	1711.5	19975	1712.5	20000	1715	20025	1717.5	20050	1720
M	20175	1732.5	20175	1732.5	20175	1732.5	20175	1732.5	20175	1732.5	20175	1732.5
H	20393	1754.3	20385	1753.5	20375	1752.5	20350	1750	20325	1747.5	20300	1745

E category, uplink modulations used	Category 3, QPSK, and 16QAM																																						
LTE transmitter and antenna implementation (standalone or sharing hardware components / antennas )	A primary antenna is used for LTE and other wireless interfaces (GSM/WCDMA) share the same antenna, and cannot transmit simultaneously. A 2 <sup>nd</sup> antenna is used for LTE and other wireless interfaces (GSM/WCDMA) for receiving only.																																						
LTE Voice / Data requirements	1. Data only																																						
LTE MPR permanently built-in by design	Yes, per 3GPP TS 36.101 v11.0.0 <b>Table 6.2.3-1: Maximum Power Reduction (MPR) for Power Class 3</b> <table border="1" style="width: 100%; border-collapse: collapse;"> <thead> <tr> <th rowspan="2">Modulation</th> <th colspan="6">Channel bandwidth / Transmission bandwidth (RB)</th> <th rowspan="2">MPR (dB)</th> </tr> <tr> <th>1.4 MHz</th> <th>3.0 MHz</th> <th>5 MHz</th> <th>10 MHz</th> <th>15 MHz</th> <th>20 MHz</th> </tr> </thead> <tbody> <tr> <td>QPSK</td> <td>&gt; 5</td> <td>&gt; 4</td> <td>&gt; 8</td> <td>&gt; 12</td> <td>&gt; 16</td> <td>&gt; 18</td> <td>≤ 1</td> </tr> <tr> <td>16 QAM</td> <td>≤ 5</td> <td>≤ 4</td> <td>≤ 8</td> <td>≤ 12</td> <td>≤ 16</td> <td>≤ 18</td> <td>≤ 1</td> </tr> <tr> <td>16 QAM</td> <td>&gt; 5</td> <td>&gt; 4</td> <td>&gt; 8</td> <td>&gt; 12</td> <td>&gt; 16</td> <td>&gt; 18</td> <td>≤ 2</td> </tr> </tbody> </table>	Modulation	Channel bandwidth / Transmission bandwidth (RB)						MPR (dB)	1.4 MHz	3.0 MHz	5 MHz	10 MHz	15 MHz	20 MHz	QPSK	> 5	> 4	> 8	> 12	> 16	> 18	≤ 1	16 QAM	≤ 5	≤ 4	≤ 8	≤ 12	≤ 16	≤ 18	≤ 1	16 QAM	> 5	> 4	> 8	> 12	> 16	> 18	≤ 2
Modulation	Channel bandwidth / Transmission bandwidth (RB)						MPR (dB)																																
	1.4 MHz	3.0 MHz	5 MHz	10 MHz	15 MHz	20 MHz																																	
QPSK	> 5	> 4	> 8	> 12	> 16	> 18	≤ 1																																
16 QAM	≤ 5	≤ 4	≤ 8	≤ 12	≤ 16	≤ 18	≤ 1																																
16 QAM	> 5	> 4	> 8	> 12	> 16	> 18	≤ 2																																
LTE A-MPR	In the base station simulator configuration, Network Setting value is set to NS_01 to disable A-MPR during SAR testing.																																						
Base station simulator used for Testing	Anritsu MT8820C																																						



3.3 Applied Standard

The Specific Absorption Rate (SAR) testing specification, method, and procedure for this device is in accordance with the following standards:

- FCC 47 CFR Part 2 (2.1093)
ANSI/IEEE C95.1-1992
IEEE 1528-2003
FCC OET Bulletin 65 Supplement C (Edition 01-01)
FCC KDB 447498 D01 v05
FCC KDB 616217 D04 v01
FCC KDB 941225 D01 v02
FCC KDB 941225 D03 v01
FCC KDB 941225 D05 v02

3.4 Device Category and SAR Limits

This device belongs to portable device category because its radiating structure is allowed to be used within 20 centimeters of the body of the user. Limit for General Population/Uncontrolled exposure should be applied for this device, it is 1.6 W/kg as averaged over any 1 gram of tissue.

3.5 Test Conditions

Ambient Condition

Table with 2 columns: Ambient Temperature (20 to 24 °C), Humidity (< 60 %)

Test Configuration

For WWAN SAR testing, the device was controlled by using a base station emulator. Communication between the device and the emulator was established by air link. The distance between the EUT and the antenna of the emulator is larger than 50 cm and the output power radiated from the emulator antenna is at least 30 dB smaller than the output power of EUT.

During WLAN SAR testing EUT is configured with the WLAN continuous TX tool, and the transmission duty factor was monitored on the spectrum analyzer with zero-span setting

Duty factor observed as below:

- 802.11b, 1Mbps: 100%
802.11g, 6Mbps: 100%
802.11a, 6Mbps: 100%
802.11n-HT20, MCS0, MCS8: 100%
802.11n-HT40, MCS0: 100%

For WLAN SAR testing, WLAN engineering testing software installed on the EUT can provide continuous transmitting RF signal.

## **4. Specific Absorption Rate (SAR)**

### **4.1 Introduction**

SAR is related to the rate at which energy is absorbed per unit mass in an object exposed to a radio field. The SAR distribution in a biological body is complicated and is usually carried out by experimental techniques or numerical modeling. The standard recommends limits for two tiers of groups, occupational/controlled and general population/uncontrolled, based on a person's awareness and ability to exercise control over his or her exposure. In general, occupational/controlled exposure limits are higher than the limits for general population/uncontrolled.

### **4.2 SAR Definition**

The SAR definition is the time derivative (rate) of the incremental energy (dW) absorbed by (dissipated in) an incremental mass (dm) contained in a volume element (dv) of a given density ( $\rho$ ). The equation description is as below:

$$\text{SAR} = \frac{d}{dt} \left( \frac{dW}{dm} \right) = \frac{d}{dt} \left( \frac{dW}{\rho dv} \right)$$

SAR is expressed in units of Watts per kilogram (W/kg)

SAR measurement can be either related to the temperature elevation in tissue by

$$\text{SAR} = C \left( \frac{\delta T}{\delta t} \right)$$

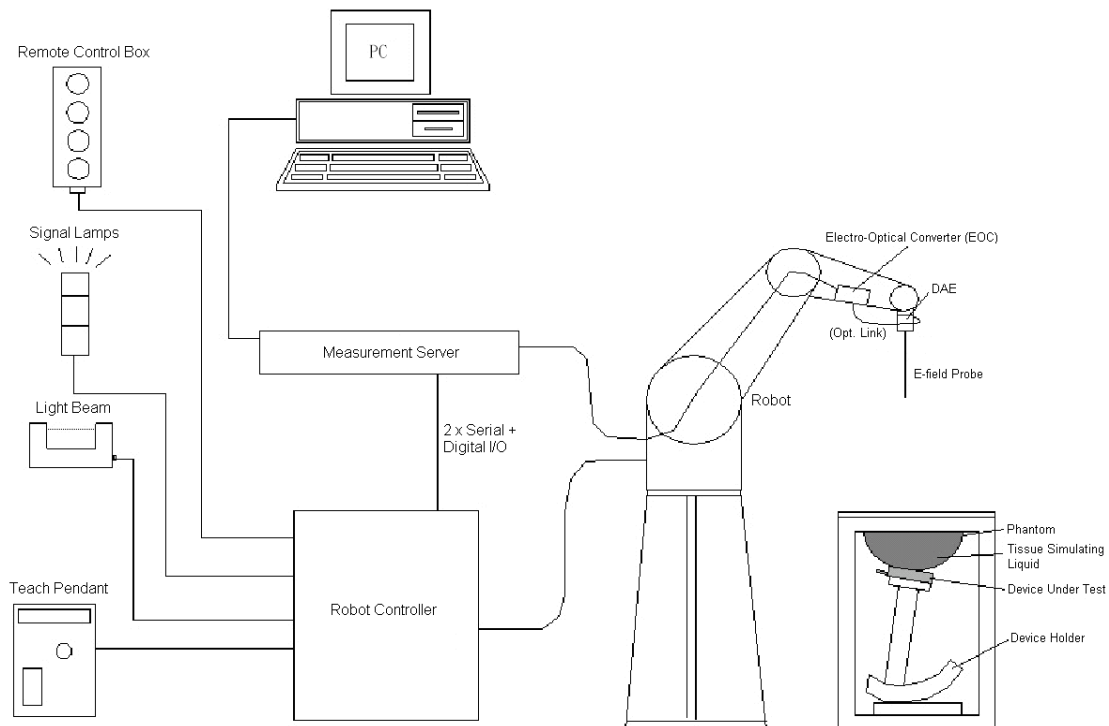
Where: C is the specific heat capacity,  $\delta T$  is the temperature rise and  $\delta t$  is the exposure duration, or related to the electrical field in the tissue by

$$\text{SAR} = \frac{\sigma |E|^2}{\rho}$$

Where:  $\sigma$  is the conductivity of the tissue,  $\rho$  is the mass density of the tissue and E is the RMS electrical field strength.

However for evaluating SAR of low power transmitter, electrical field measurement is typically applied.

## 5. SAR Measurement System



**Fig 5.1 SPEAG DASY System Configurations**

The DASY system for performance compliance tests is illustrated above graphically. This system consists of the following items:

- A standard high precision 6-axis robot with controller, a teach pendant and software
- A data acquisition electronic (DAE) attached to the robot arm extension
- A dosimetric probe equipped with an optical surface detector system
- The electro-optical converter (EOC) performs the conversion between optical and electrical signals
- A measurement server performs the time critical tasks such as signal filtering, control of the robot operation and fast movement interrupts.
- A probe alignment unit which improves the accuracy of the probe positioning
- A computer operating Windows XP
- DASY software
- Remote control with teach pendant and additional circuitry for robot safety such as warning lamps, etc.
- The SAM twin phantom
- A device holder
- Tissue simulating liquid
- Dipole for evaluating the proper functioning of the system

Component details are described in in the following sub-sections.

### 5.1 E-Field Probe

The SAR measurement is conducted with the dosimetric probe (manufactured by SPEAG). The probe is specially designed and calibrated for use in liquid with high permittivity. The dosimetric probe has special calibration in liquid at different frequency. This probe has a built in optical surface detection system to prevent from collision with phantom.

5.1.1 E-Field Probe Specification

<ET3DV6 Probe >

<b>Construction</b>	Symmetrical design with triangular core Built-in optical fiber for surface detection system. Built-in shielding against static charges. PEEK enclosure material (resistant to organic solvents, e.g., DGBE)
<b>Frequency</b>	10 MHz to 3 GHz; Linearity: $\pm 0.2$ dB
<b>Directivity</b>	$\pm 0.2$ dB in HSL (rotation around probe axis) $\pm 0.4$ dB in HSL (rotation normal to probe axis)
<b>Dynamic Range</b>	5 $\mu$ W/g to 100 mW/g; Linearity: $\pm 0.2$ dB
<b>Dimensions</b>	Overall length: 330 mm (Tip: 16 mm) Tip diameter: 6.8 mm (Body: 12 mm) Distance from probe tip to dipole centers: 2.7 mm



Fig 5.2 Photo of ET3DV6

<ES3DV3 Probe >

<b>Construction</b>	Symmetrical design with triangular core Built-in optical fiber for surface detection system. Built-in shielding against static charges. PEEK enclosure material (resistant to organic solvents, e.g., DGBE)
<b>Frequency</b>	10 MHz to 3 GHz; Linearity: $\pm 0.2$ dB
<b>Directivity</b>	$\pm 0.2$ dB in HSL (rotation around probe axis) $\pm 0.4$ dB in HSL (rotation normal to probe axis)
<b>Dynamic Range</b>	10 $\mu$ W/g to 100 mW/g; Linearity: $\pm 0.2$ dB
<b>Dimensions</b>	Overall length: 337 mm (Tip: 10 mm) Tip diameter: 4 mm (Body: 10 mm) Distance from probe tip to dipole centers: 3 mm



Fig 5.3 Photo of ES3DV3

<EX3DV4 Probe>

<b>Construction</b>	Symmetrical design with triangular core Built-in shielding against static charges PEEK enclosure material (resistant to organic solvents, e.g., DGBE)
<b>Frequency</b>	10 MHz to 6 GHz; Linearity: $\pm 0.2$ dB
<b>Directivity</b>	$\pm 0.3$ dB in HSL (rotation around probe axis) $\pm 0.5$ dB in tissue material (rotation normal to probe axis)
<b>Dynamic Range</b>	10 $\mu$ W/g to 100 mW/g; Linearity: $\pm 0.2$ dB (noise: typically $< 1$ $\mu$ W/g)
<b>Dimensions</b>	Overall length: 330 mm (Tip: 20 mm) Tip diameter: 2.5 mm (Body: 12 mm) Typical distance from probe tip to dipole centers: 1 mm



Fig 5.4 Photo of EX3DV4/ES3DV4

### 5.1.2 E-Field Probe Calibration

Each probe needs to be calibrated according to a dosimetric assessment procedure with accuracy better than  $\pm 10\%$ . The spherical isotropy shall be evaluated and within  $\pm 0.25\text{dB}$ . The sensitivity parameters (NormX, NormY, and NormZ), the diode compression parameter (DCP) and the conversion factor (ConvF) of the probe are tested. The calibration data can be referred to appendix C of this report.

### 5.2 Data Acquisition Electronics (DAE)

The data acquisition electronics (DAE) consists of a highly sensitive electrometer-grade preamplifier with auto-zeroing, a channel and gain-switching multiplexer, a fast 16 bit AD-converter and a command decoder and control logic unit. Transmission to the measurement server is accomplished through an optical downlink for data and status information as well as an optical uplink for commands and the clock. The input impedance of the DAE is 200 MOhm; the inputs are symmetrical and floating. Common mode rejection is above 80 dB.



Fig 5.5 Photo of DAE

### 5.3 Robot

The SPEAG DASY system uses the high precision robots (DASY4: RX90BL; DASY5: TX90XL) type from Stäubli SA (France). For the 6-axis controller system, the robot controller version (DASY4: CS7MB; DASY5: CS8c) from Stäubli is used. The Stäubli robot series have many features that are important for our application:

- High precision (repeatability  $\pm 0.035\text{ mm}$ )
- High reliability (industrial design)
- Jerk-free straight movements
- Low ELF interference (the closed metallic construction shields against motor control fields)



Fig 5.6 Photo of DASY4



Fig 5.7 Photo of DASY5

### 5.4 Measurement Server

The measurement server is based on a PC/104 CPU board with CPU (DASY4: 166 MHz, Intel Pentium; DASY5: 400 MHz, Intel Celeron), chipdisk (DASY4: 32 MB; DASY5: 128 MB), RAM (DASY4: 64 MB, DASY5: 128 MB). The necessary circuits for communication with the DAE electronic box, as well as the 16 bit AD converter system for optical detection and digital I/O interface are contained on the DASY I/O board, which is directly connected to the PC/104 bus of the CPU board.

The measurement server performs all the real-time data evaluation for field measurements and surface detection, controls robot movements and handles safety operations.



Fig 5.8 Photo of Server for DASY4



Fig 5.9 Photo of Server for DASY5

**5.5 Phantom**

**<SAM Twin Phantom>**

<b>Shell Thickness</b>	2 ± 0.2 mm; Center ear point: 6 ± 0.2 mm
<b>Filling Volume</b>	Approx. 25 liters
<b>Dimensions</b>	Length: 1000 mm; Width: 500 mm; Height: adjustable feet
<b>Measurement Areas</b>	Left Hand, Right Hand, Flat Phantom



Fig 5.10 Photo of SAM Phantom

The bottom plate contains three pair of bolts for locking the device holder. The device holder positions are adjusted to the standard measurement positions in the three sections. A white cover is provided to tap the phantom during off-periods to prevent water evaporation and changes in the liquid parameters. On the phantom top, three reference markers are provided to identify the phantom position with respect to the robot.

**<ELI4 Phantom>**

<b>Shell Thickness</b>	2 ± 0.2 mm (sagging: <1%)
<b>Filling Volume</b>	Approx. 30 liters
<b>Dimensions</b>	Major ellipse axis: 600 mm Minor axis: 400 mm



Fig 5.11 Photo of ELI4 Phantom

The ELI4 phantom is intended for compliance testing of handheld and body-mounted wireless devices in the frequency range of 30 MHz to 6 GHz. ELI4 is fully compatible with standard and all known tissue simulating liquids.

## 5.6 Device Holder

### <Device Holder for SAM Twin Phantom>

The SAR in the phantom is approximately inversely proportional to the square of the distance between the source and the liquid surface. For a source at 5 mm distance, a positioning uncertainty of  $\pm 0.5$  mm would produce a SAR uncertainty of  $\pm 20$  %. Accurate device positioning is therefore crucial for accurate and repeatable measurements. The positions in which the devices must be measured are defined by the standards.

The DASY device holder is designed to cope with different positions given in the standard. It has two scales for the device rotation (with respect to the body axis) and the device inclination (with respect to the line between the ear reference points). The rotation center for both scales is the ear reference point (ERP). Thus the device needs no repositioning when changing the angles.

The DASY device holder is constructed of low-loss POM material having the following dielectric parameters: relative permittivity  $\epsilon = 3$  and loss tangent  $\delta = 0.02$ . The amount of dielectric material has been reduced in the closest vicinity of the device, since measurements have suggested that the influence of the clamp on the test results could thus be lowered.



Fig 5.12 Device Holder

### <Laptop Extension Kit>

The extension is lightweight and made of POM, acrylic glass and foam. It fits easily on the upper part of the mounting device in place of the phone positioned. The extension is fully compatible with the SAM Twin and ELI phantoms.

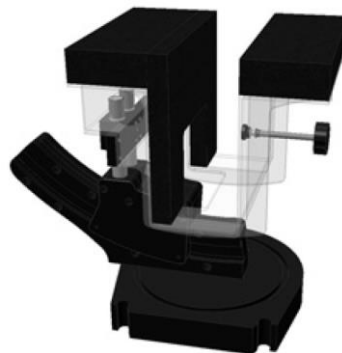


Fig 5.13 Laptop Extension Kit





## 5.7 Data Storage and Evaluation

### 5.7.1 Data Storage

The DASY software stores the assessed data from the data acquisition electronics as raw data (in microvolt readings from the probe sensors), together with all the necessary software parameters for the data evaluation (probe calibration data, liquid parameters and device frequency and modulation data) in measurement files. The post-processing software evaluates the desired unit and format for output each time the data is visualized or exported. This allows verification of the complete software setup even after the measurement and allows correction of erroneous parameter settings. For example, if a measurement has been performed with an incorrect crest factor parameter in the device setup, the parameter can be corrected afterwards and the data can be reevaluated.

The measured data can be visualized or exported in different units or formats, depending on the selected probe type (e.g., [V/m], [A/m], [mW/g]). Some of these units are not available in certain situations or give meaningless results, e.g., a SAR-output in a non-lose media, will always be zero. Raw data can also be exported to perform the evaluation with other software packages.

### 5.7.2 Data Evaluation

The DASY post-processing software (SEMCAD) automatically executes the following procedures to calculate the field units from the microvolt readings at the probe connector. The parameters used in the evaluation are stored in the configuration modules of the software :

<b>Probe parameters :</b>	- Sensitivity	Norm <sub>i</sub> , a <sub>i0</sub> , a <sub>i1</sub> , a <sub>i2</sub>
	- Conversion factor	ConvF <sub>i</sub>
	- Diode compression point	dcp <sub>i</sub>
<b>Device parameters :</b>	- Frequency	f
	- Crest factor	cf
<b>Media parameters :</b>	- Conductivity	σ
	- Density	ρ

These parameters must be set correctly in the software. They can be found in the component documents or they can be imported into the software from the configuration files issued for the DASY components. In the direct measuring mode of the multi-meter option, the parameters of the actual system setup are used. In the scan visualization and export modes, the parameters stored in the corresponding document files are used.

The first step of the evaluation is a linearization of the filtered input signal to account for the compression characteristics of the detector diode. The compensation depends on the input signal, the diode type and the DC-transmission factor from the diode to the evaluation electronics. If the exciting field is pulsed, the crest factor of the signal must be known to correctly compensate for peak power.

The formula for each channel can be given as :

$$V_i = U_i + U_i^2 \cdot \frac{cf}{dcp_i}$$

with  $V_i$  = compensated signal of channel i, (i = x, y, z)  
 $U_i$  = input signal of channel i, (i = x, y, z)  
 cf = crest factor of exciting field (DASY parameter)  
 dcp<sub>i</sub> = diode compression point (DASY parameter)

From the compensated input signals, the primary field data for each channel can be evaluated :

$$\text{E-field Probes : } E_i = \sqrt{\frac{V_i}{\text{Norm}_i \cdot \text{ConvF}}}$$

$$\text{H-field Probes : } H_i = \sqrt{V_i \cdot \frac{a_{i0} + a_{i1}f + a_{i2}f^2}{f}}$$

with  $V_i$  = compensated signal of channel i, (i = x, y, z)  
 $\text{Norm}_i$  = sensor sensitivity of channel i, (i = x, y, z),  $\mu\text{V}/(\text{V/m})^2$  for E-field Probes  
 ConvF = sensitivity enhancement in solution  
 $a_{ij}$  = sensor sensitivity factors for H-field probes  
 f = carrier frequency [GHz]  
 $E_i$  = electric field strength of channel i in V/m  
 $H_i$  = magnetic field strength of channel i in A/m

The RSS value of the field components gives the total field strength (Hermitian magnitude) :

$$E_{\text{tot}} = \sqrt{E_x^2 + E_y^2 + E_z^2}$$

The primary field data are used to calculate the derived field units.

$$\text{SAR} = E_{\text{tot}}^2 \cdot \frac{\sigma}{\rho \cdot 1000}$$

with SAR = local specific absorption rate in mW/g  
 $E_{\text{tot}}$  = total field strength in V/m  
 $\sigma$  = conductivity in [mho/m] or [Siemens/m]  
 $\rho$  = equivalent tissue density in  $\text{g}/\text{cm}^3$

Note that the density is set to 1, to account for actual head tissue density rather than the density of the tissue simulating liquid.



**5.8 Test Equipment List**

Manufacturer	Name of Equipment	Type/Model	Serial Number	Calibration	
				Last Cal.	Due Date
SPEAG	750MHz System Validation Kit	D750V3	1012	Jun. 11, 2010	Jun. 10, 2013
SPEAG	835MHz System Validation Kit	D835V2	4d120	Jun. 13, 2012	Jun. 12, 2013
SPEAG	1900MHz System Validation Kit	D1900V2	5d142	Jun. 21, 2012	Jun. 20, 2013
SPEAG	2450MHz System Validation Kit	D2450V2	736	Jul. 25, 2011	Jul. 24, 2013
SPEAG	5GHz System Validation Kit	D5GHzV2	1006	Dec. 11, 2012	Dec. 10, 2013
SPEAG	Data Acquisition Electronics	DAE4	778	Aug. 27, 2012	Aug. 26, 2013
SPEAG	Data Acquisition Electronics	DAE3	495	Apr. 23, 2012	Apr. 22, 2013
SPEAG	Data Acquisition Electronics	DAE4	1338	Jun. 12, 2012	Jun. 11, 2013
SPEAG	Dosimetric E-Field Probe	ET3DV6	1787	May. 29, 2012	May. 28, 2013
SPEAG	Dosimetric E-Field Probe	EX3DV4	3792	Jun. 21, 2012	Jun. 20, 2013
SPEAG	Dosimetric E-Field Probe	EX3DV4	3661	Jan. 27, 2012	Jan. 26, 2013
SPEAG	Dosimetric E-Field Probe	ES3DV3	3270	Sep. 28, 2012	Sep. 27, 2013
Wisewind	Thermometer	ETP-101	TM560	Nov. 13, 2012	Nov. 12, 2013
Wisewind	Thermometer	ETP-101	TM685	Nov. 13, 2012	Nov. 12, 2013
H.M.IRIS	Thermometer	TH-08	TM658	Nov. 13, 2012	Nov. 12, 2013
SPEAG	Device Holder	N/A	N/A	NCR	NCR
SPEAG	ELI4 Phantom	QD 0VA 001 BB	1026	NCR	NCR
SPEAG	ELI4 Phantom	QD 0VA 001 BA	1029	NCR	NCR
SPEAG	ELI4 Phantom	QD 0VA 002 AA	TP-1127	NCR	NCR
Agilent	ENA Network Analyzer	E5071C	MY46316648	Feb. 07, 2013	Feb. 06, 2014
Agilent	ESG Vector Series Signal Generator	E4438C	MY49070755	Oct. 02, 2012	Oct. 01, 2013
Anritsu	Power Meter	ML2495A	1132003	Aug. 14, 2012	Aug. 13, 2013
Anritsu	Radio Communication Analyzer	MT8820C	6201074414	Dec. 11, 2012	Dec. 10, 2014
Agilent	Wireless Communication Test Set	E5515C	MY50266977	Nov. 13, 2011	Nov. 12, 2013
Agilent	Dual Directional Coupler	778D	50422	Note 4	
Woken	Attenuator 1	WK0602-XX	N/A	Note 4	
PE	Attenuator 2	PE7005-10	N/A	Note 4	
PE	Attenuator 3	PE7005- 3	N/A	Note 4	
Agilent	Dielectric Probe Kit	85070D	US01440205	Note 5	
AR	Power Amplifier	5S1G4M2	0328767	Note 6	
R&S	Spectrum Analyzer	FSP	101131	Jul. 23, 2012	Jul. 22, 2013

**Table 5.1 Test Equipment List**

**Note:**

1. The calibration certificate of DASY can be referred to appendix C of this report.
2. Referring to KDB 865664 D01v01, the dipole calibration interval can be extended to 3 years with justification. The dipoles are also not physically damaged, or repaired during the interval.
3. The justification data of dipole D750V3 SN: 1012, D2450V2 SN: 736, can be found in appendix C. The return loss is < -20dB, within 20% of prior calibration, the impedance is within 5 ohm of prior calibration.
4. The Insertion Loss calibration of Dual Directional Coupler and Attenuator were characterized via the network analyzer and compensated during system check.
5. The dielectric probe kit was calibrated via the network analyzer, with the specified procedure (calibrated in pure water) and calibration kit (standard) short circuit, before the dielectric measurement. The specific procedure and calibration kit are provided by Agilent.
6. In system check we need to monitor the level on the power meter, and adjust the power amplifier level to have precise power level to the dipole; the measured SAR will be normalized to 1W input power according to the ratio of 1W to the input power to the dipole. For system check, the calibration of the power amplifier is deemed not critically required for correct measurement; the power meter is critical and we do have calibration for it
7. Attenuator 1 insertion loss is calibrated by the network Analyzer, which the calibration is valid, before system check.

## 6. Tissue Simulating Liquids

For the measurement of the field distribution inside the SAM phantom with DASy, the phantom must be filled with around 25 liters of homogeneous body tissue simulating liquid. For head SAR testing, the liquid height from the ear reference point (ERP) of the phantom to the liquid top surface is larger than 15 cm, which is shown in Fig. 6.1. For body SAR testing, the liquid height from the center of the flat phantom to the liquid top surface is larger than 15 cm, which is shown in Fig. 6.2.

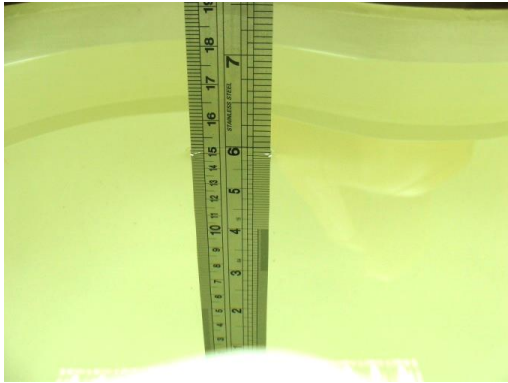


Fig 6.1 Photo of Liquid Height for Head SAR



Fig 6.2 Photo of Liquid Height for Body SAR

The following table gives the recipes for tissue simulating liquid.

Frequency (MHz)	Water (%)	Sugar (%)	Cellulose (%)	Salt (%)	Preventol (%)	DGBE (%)	Conductivity ( $\sigma$ )	Permittivity ( $\epsilon_r$ )
<b>For Body</b>								
750	51.7	47.2	0	0.9	0.1	0	0.96	55.5
835	50.8	48.2	0	0.9	0.1	0	0.97	55.2
900	50.8	48.2	0	0.9	0.1	0	1.05	55.0
1800, 1900, 2000	70.2	0	0	0.4	0	29.4	1.52	53.3
2450	68.6	0	0	0	0	31.4	1.95	52.7

Table 6.1 Recipes of Tissue Simulating Liquid

### Simulating Liquid for 5G, Manufactured by SPEAG

Ingredients	(% by weight)
Water	64~78%
Mineral oil	11~18%
Emulsifiers	9~15%
Additives and Salt	2~3%



The dielectric parameters of the liquids were verified prior to the SAR evaluation using an Agilent 85070D Dielectric Probe Kit and an Agilent Network Analyzer.

The following table shows the measuring results for simulating liquid.

Frequency (MHz)	Liquid Type	Liquid Temp. (°C)	Conductivity ( $\sigma$ )	Permittivity ( $\epsilon_r$ )	Conductivity Target ( $\sigma$ )	Permittivity Target ( $\epsilon_r$ )	Delta ( $\sigma$ ) (%)	Delta ( $\epsilon_r$ ) (%)	Limit (%)	Date
750	Body	21.5	0.971	54.634	0.96	55.5	1.15	-1.56	$\pm 5$	Mar. 22, 2013
835	Body	21.5	0.996	55.38	0.97	55.2	2.68	0.33	$\pm 5$	Mar. 21, 2013
1750	Body	21.6	1.508	52.41	1.52	53.3	-0.79	-1.67	$\pm 5$	Mar. 22, 2013
1900	Body	21.4	1.518	54.596	1.52	53.3	-0.13	2.43	$\pm 5$	Mar. 21, 2013
2450	Body	21.4	1.904	51.836	1.95	52.7	-2.36	-1.64	$\pm 5$	Mar. 12, 2013
5200	Body	21.5	5.284	47.499	5.3	49	-0.30	-3.06	$\pm 5$	Mar. 14, 2013
5200	Body	21.6	5.268	47.552	5.3	49	-0.60	-2.96	$\pm 5$	Mar. 16, 2013
5300	Body	21.5	5.422	47.242	5.30	49.0	2.30	-3.59	$\pm 5$	Mar. 14, 2013
5300	Body	21.6	5.405	47.298	5.30	49.0	1.98	-3.47	$\pm 5$	Mar. 16, 2013
5300	Body	21.4	5.393	47.275	5.3	49	1.75	-3.52	$\pm 5$	Mar. 19, 2013
5600	Body	21.5	5.821	46.73	5.65	48.6	3.03	-3.85	$\pm 5$	Mar. 14, 2013
5600	Body	21.4	5.79	46.784	5.65	48.6	2.48	-3.74	$\pm 5$	Mar. 19, 2013
5800	Body	21.5	6.179	46.434	6.00	48.2	2.98	-3.66	$\pm 5$	Mar. 14, 2013
5800	Body	21.5	5.981	46.515	6.00	48.2	-0.32	-3.50	$\pm 5$	Mar. 15, 2013
5800	Body	21.4	6.144	46.492	6.00	48.2	2.40	-3.54	$\pm 5$	Mar. 19, 2013

Table 6.2 Measuring Results for Simulating Liquid

## 7. SAR System Verification

Each DASY system is equipped with one or more system validation kits. These units, together with the predefined measurement procedures within the DASY software, enable the user to conduct the system performance check and system validation. System validation kit includes a dipole, tripod holder to fix it underneath the flat phantom and a corresponding distance holder.

### 7.1 Purpose of System Performance check

The system performance check verifies that the system operates within its specifications. System and operator errors can be detected and corrected. It is recommended that the system performance check be performed prior to any usage of the system in order to guarantee reproducible results. The system performance check uses normal SAR measurements in a simplified setup with a well characterized source. This setup was selected to give a high sensitivity to all parameters that might fail or vary over time. The system check does not intend to replace the calibration of the components, but indicates situations where the system uncertainty is exceeded due to drift or failure.

### 7.2 System Setup

In the simplified setup for system evaluation, the EUT is replaced by a calibrated dipole and the power source is replaced by a continuous wave that comes from a signal generator. The calibrated dipole must be placed beneath the flat phantom section of the SAM twin phantom with the correct distance holder. The distance holder should touch the phantom surface with a light pressure at the reference marking and be oriented parallel to the long side of the phantom. The equipment setup is shown below:

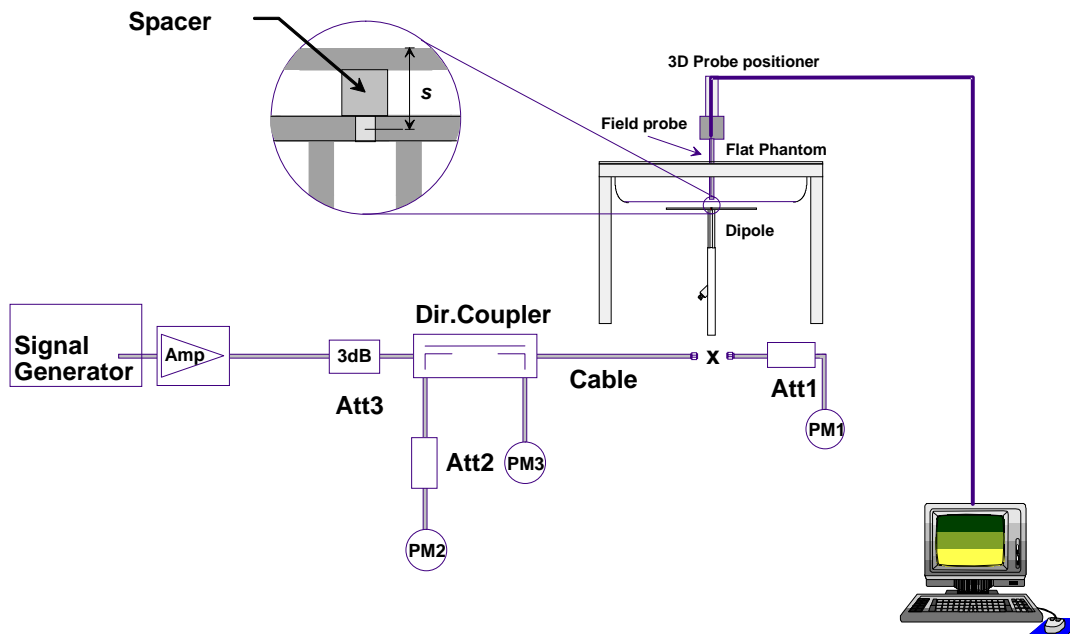


Fig 7.1 System Setup for System Evaluation

1. Signal Generator
2. Amplifier
3. Directional Coupler
4. Power Meter
5. Calibrated Dipole



**Fig 7.2 Photo of Dipole Setup**

**7.3 SAR System Verification Results**

Comparing to the original SAR value provided by SPEAG, the verification data should be within its specification of 10 %. Table 7.1 shows the target SAR and measured SAR after normalized to 1W input power. The table below indicates the system performance check can meet the variation criterion and the plots can be referred to Appendix A of this report.

Date	Frequency (MHz)	Liquid Type	Power fed onto reference dipole (mW)	Targeted SAR (W/kg)	Measured SAR (W/kg)	Normalized SAR (W/kg)	Deviation (%)
Mar. 22, 2013	750	Body	250	8.86	2.11	8.44	-4.74
Mar. 21, 2013	835	Body	250	9.44	2.54	10.16	7.63
Mar. 22, 2013	1750	Body	250	36.8	9.57	38.28	4.02
Mar. 21, 2013	1900	Body	250	40.5	9.83	39.32	-2.91
Mar. 12, 2013	2450	Body	250	52.3	12.5	50	-4.40
Mar. 14, 2013	5200	Body	100	71.4	7.7	77	7.84
Mar. 16, 2013	5200	Body	100	71.4	6.62	66.2	-7.28
Mar. 14, 2013	5300	Body	100	73.5	7.52	75.2	2.31
Mar. 16, 2013	5300	Body	100	73.5	7.12	71.2	-3.13
Mar. 19, 2013	5300	Body	100	73.5	7.7	77	4.76
Mar. 14, 2013	5600	Body	100	76.8	7.45	74.5	-2.99
Mar. 19, 2013	5600	Body	100	76.8	8.2	82	6.77
Mar. 14, 2013	5800	Body	100	71.7	7.18	71.8	0.14
Mar. 15, 2013	5800	Body	100	71.7	7.27	72.7	1.39
Mar. 19, 2013	5800	Body	100	71.7	7.65	76.5	6.69

**Table 7.1 Target and Measurement SAR after Normalized**



## 8. EUT Testing Position

This EUT was tested in three different positions. They are bottom-face, Edge 1 and Edge 4 of tablet PC. In these positions, the surface of EUT is touching with phantom 0 cm. Please refer to Appendix D for the test setup photos.

## 9. Measurement Procedures

The measurement procedures are as follows:

### <Conducted power measurement>

- (a) For WWAN power measurement, use base station simulator to configure EUT WWAN transmission in conducted connection with RF cable, at maximum power in each supported wireless interface and frequency band.
- (b) Read the WWAN RF power level from the base station simulator.
- (c) For WLAN/BT power measurement, use engineering software to configure EUT WLAN/BT continuously transmission, at maximum RF power in each supported wireless interface and frequency band
- (d) Connect EUT RF port through RF cable to the power meter, and measure WLAN/BT output power

### <SAR measurement>

- (a) Use base station simulator to configure EUT WWAN transmission in radiated connection, and engineering software to configure EUT WLAN/BT continuously transmission, at maximum RF power, in the highest power channel.
- (b) Place the EUT in the positions as Appendix D demonstrates.
- (c) Set scan area, grid size and other setting on the DASY software.
- (d) Measure SAR results for the highest power channel on each testing position.
- (e) Find out the largest SAR result on these testing positions of each band
- (f) Measure SAR results for other channels in worst SAR testing position if the reported SAR of highest power channel is larger than 0.8 W/kg

According to the test standard, the recommended procedure for assessing the peak spatial-average SAR value consists of the following steps:

- (a) Power reference measurement
- (b) Area scan
- (c) Zoom scan
- (d) Power drift measurement

### 9.1 Spatial Peak SAR Evaluation

The procedure for spatial peak SAR evaluation has been implemented according to the test standard. It can be conducted for 1g and 10g, as well as for user-specific masses. The DASY software includes all numerical procedures necessary to evaluate the spatial peak SAR value.

The base for the evaluation is a "cube" measurement. The measured volume must include the 1g and 10g cubes with the highest averaged SAR values. For that purpose, the center of the measured volume is aligned to the interpolated peak SAR value of a previously performed area scan.

The entire evaluation of the spatial peak values is performed within the post-processing engine (SEMCAD). The system always gives the maximum values for the 1g and 10g cubes. The algorithm to find the cube with highest averaged SAR is divided into the following stages:

- (a) Extraction of the measured data (grid and values) from the Zoom Scan
- (b) Calculation of the SAR value at every measurement point based on all stored data (A/D values and measurement parameters)
- (c) Generation of a high-resolution mesh within the measured volume
- (d) Interpolation of all measured values from the measurement grid to the high-resolution grid
- (e) Extrapolation of the entire 3-D field distribution to the phantom surface over the distance from sensor to surface
- (f) Calculation of the averaged SAR within masses of 1g and 10g



### 9.2 Power Reference Measurement

The Power Reference Measurement and Power Drift Measurements are for monitoring the power drift of the device under test in the batch process. The minimum distance of probe sensors to surface determines the closest measurement point to phantom surface. This distance cannot be smaller than the distance of sensor calibration points to probe tip as defined in the probe properties.

### 9.3 Area & Zoom Scan Procedures

First Area Scan is used to locate the approximate location(s) of the local peak SAR value(s). The measurement grid within an Area Scan is defined by the grid extent, grid step size and grid offset. Next, in order to determine the EM field distribution in a three-dimensional spatial extension, Zoom Scan is required. The Zoom Scan is performed around the highest E-field value to determine the averaged SAR-distribution over 10 g. Area scan and zoom scan resolution setting follows KDB 865664 D01v01 quoted below.

For any secondary peaks found in the area scan which are within 2 dB of the maximum peak and are not within this zoom scan, the zoom scan should be repeated

		≤ 3 GHz	> 3 GHz
Maximum distance from closest measurement point (geometric center of probe sensors) to phantom surface		5 ± 1 mm	$\frac{1}{2} \cdot \delta \cdot \ln(2) \pm 0.5$ mm
Maximum probe angle from probe axis to phantom surface normal at the measurement location		30° ± 1°	20° ± 1°
Maximum area scan spatial resolution: $\Delta x_{Area}, \Delta y_{Area}$		≤ 2 GHz: ≤ 15 mm 2 – 3 GHz: ≤ 12 mm	3 – 4 GHz: ≤ 12 mm 4 – 6 GHz: ≤ 10 mm
		When the x or y dimension of the test device, in the measurement plane orientation, is smaller than the above, the measurement resolution must be ≤ the corresponding x or y dimension of the test device with at least one measurement point on the test device.	
Maximum zoom scan spatial resolution: $\Delta x_{Zoom}, \Delta y_{Zoom}$		≤ 2 GHz: ≤ 8 mm 2 – 3 GHz: ≤ 5 mm*	3 – 4 GHz: ≤ 5 mm* 4 – 6 GHz: ≤ 4 mm*
Maximum zoom scan spatial resolution, normal to phantom surface	uniform grid: $\Delta z_{Zoom}(n)$	≤ 5 mm	3 – 4 GHz: ≤ 4 mm 4 – 5 GHz: ≤ 3 mm 5 – 6 GHz: ≤ 2 mm
	graded grid $\Delta z_{Zoom}(1)$ : between 1 <sup>st</sup> two points closest to phantom surface	≤ 4 mm	3 – 4 GHz: ≤ 3 mm 4 – 5 GHz: ≤ 2.5 mm 5 – 6 GHz: ≤ 2 mm
	$\Delta z_{Zoom}(n>1)$ : between subsequent points	≤ 1.5 · $\Delta z_{Zoom}(n-1)$	
Minimum zoom scan volume	x, y, z	≥ 30 mm	3 – 4 GHz: ≥ 28 mm 4 – 5 GHz: ≥ 25 mm 5 – 6 GHz: ≥ 22 mm
Note: $\delta$ is the penetration depth of a plane-wave at normal incidence to the tissue medium; see draft standard IEEE P1528-2011 for details. * When zoom scan is required and the <i>reported</i> SAR from the area scan based <i>1-g SAR estimation</i> procedures of KDB 447498 is ≤ 1.4 W/kg, ≤ 8 mm, ≤ 7 mm and ≤ 5 mm zoom scan resolution may be applied, respectively, for 2 GHz to 3 GHz, 3 GHz to 4 GHz and 4 GHz to 6 GHz.			



### **9.4 Volume Scan Procedures**

The volume scan is used for assess overlapping SAR distributions for antennas transmitting in different frequency bands. It is equivalent to an oversized zoom scan used in standalone measurements. The measurement volume will be used to enclose all the simultaneous transmitting antennas. For antennas transmitting simultaneously in different frequency bands, the volume scan is measured separately in each frequency band. In order to sum correctly to compute the 1g aggregate SAR, the EUT remain in the same test position for all measurements and all volume scan use the same spatial resolution and grid spacing. When all volume scan were completed, the software, SEMCAD postprocessor can combine and subsequently superpose these measurement data to calculating the multiband SAR.

### **9.5 SAR Averaged Methods**

In DASYS, the interpolation and extrapolation are both based on the modified Quadratic Shepard's method. The interpolation scheme combines a least-square fitted function method and a weighted average method which are the two basic types of computational interpolation and approximation.

Extrapolation routines are used to obtain SAR values between the lowest measurement points and the inner phantom surface. The extrapolation distance is determined by the surface detection distance and the probe sensor offset. The uncertainty increases with the extrapolation distance. To keep the uncertainty within 1% for the 1 g and 10 g cubes, the extrapolation distance should not be larger than 5 mm.

### **9.6 Power Drift Monitoring**

All SAR testing is under the EUT install full charged battery and transmit maximum output power. In DASYS measurement software, the power reference measurement and power drift measurement procedures are used for monitoring the power drift of EUT during SAR test. Both these procedures measure the field at a specified reference position before and after the SAR testing. The software will calculate the field difference in dB. If the power drifts more than 5%, the SAR will be retested.



### 10. Conducted RF Output Power (Unit: dBm)

<GSM Conducted Power>

Band GSM850	Burst Average Power (dBm)			Frame-Average Power (dBm)		
	TX Channel	128	189	251	128	189
Frequency (MHz)	824.2	836.4	848.8	824.2	836.4	848.8
GPRS (GMSK, 1 Tx slot) – CS1	31.76	31.78	31.73	22.76	22.78	22.73
GPRS (GMSK, 2 Tx slots) – CS1	31.62	31.68	31.56	25.62	25.68	25.56
EDGE (GMSK, 1 Tx slot) – MCS1	31.74	31.75	31.72	22.74	22.75	22.72
EDGE (GMSK, 2 Tx slots) – MCS1	31.62	31.67	31.61	25.62	25.67	25.61
EDGE (GMSK, 3 Tx slots) – MCS1	29.10	29.13	28.91	24.84	24.87	24.65
EDGE (GMSK, 4 Tx slots) – MCS1	25.08	25.15	24.93	22.08	22.15	21.93
EDGE (8PSK, 1 Tx slot) – MCS5	26.24	26.38	26.20	17.24	17.38	17.20
EDGE (8PSK, 2 Tx slots) – MCS5	26.16	26.32	26.06	20.16	20.32	20.06
EDGE (8PSK, 3 Tx slots) – MCS5	26.10	26.23	26.01	21.84	21.97	21.75
EDGE (8PSK, 4 Tx slots) – MCS5	26.09	26.15	26.03	23.09	23.15	23.03

Remark: The frame-averaged power is linearly scaled the maximum burst averaged power over 8 time slots. The calculated method are shown as below:

Frame-averaged power = Maximum burst averaged power (1 Tx Slot) - 9 dB  
 Frame-averaged power = Maximum burst averaged power (2 Tx Slots) - 6 dB  
 Frame-averaged power = Maximum burst averaged power (3 Tx Slots) - 4.26 dB  
 Frame-averaged power = Maximum burst averaged power (4 Tx Slots) - 3 dB

Note:

- Per KDB 941225 D03 v01, for Body SAR testing, the EUT was set in GPRS (2 Tx slots) due to it is highest frame-average power.
- Per KDB 447498 D01v05, the maximum output power channel is used for SAR testing and for further SAR test reduction.

Band GSM1900	Burst Average Power (dBm)			Frame-Average Power (dBm)		
	TX Channel	512	661	810	512	661
Frequency (MHz)	1850.2	1880	1909.8	1850.2	1880	1909.8
GPRS (GMSK, 1 Tx slot) – CS1	29.20	29.30	29.09	20.20	20.30	20.09
GPRS (GMSK, 2 Tx slots) – CS1	29.00	29.10	28.94	23.00	23.10	22.94
EDGE (GMSK, 1 Tx slot) – MCS1	29.00	29.20	29.01	20.00	20.20	20.01
EDGE (GMSK, 2 Tx slots) – MCS1	28.78	28.99	28.88	22.78	22.99	22.88
EDGE (GMSK, 3 Tx slots) – MCS1	26.30	26.39	26.47	22.04	22.13	22.21
EDGE (GMSK, 4 Tx slots) – MCS1	25.19	25.25	25.13	22.19	22.25	22.13
EDGE (8PSK, 1 Tx slot) – MCS5	24.84	24.89	24.83	15.84	15.89	15.83
EDGE (8PSK, 2 Tx slots) – MCS5	24.73	24.77	24.69	18.73	18.77	18.69
EDGE (8PSK, 3 Tx slots) – MCS5	24.50	24.60	24.48	20.24	20.34	20.22
EDGE (8PSK, 4 Tx slots) – MCS5	24.41	24.63	24.40	21.41	21.63	21.40

Remark: The frame-averaged power is linearly scaled the maximum burst averaged power over 8 time slots. The calculated method are shown as below:

Frame-averaged power = Maximum burst averaged power (1 Tx Slot) - 9 dB  
 Frame-averaged power = Maximum burst averaged power (2 Tx Slots) - 6 dB  
 Frame-averaged power = Maximum burst averaged power (3 Tx Slots) - 4.26 dB  
 Frame-averaged power = Maximum burst averaged power (4 Tx Slots) - 3 dB

Note:

- Per KDB 941225 D03v01, for Body SAR testing, the EUT was set in GPRS (2 Tx slots) due to it is highest frame-average power.
- Per KDB 447498 D01v05, the maximum output power channel is used for SAR testing and for further SAR test reduction.

**<WCDMA Conducted Power>**

The following tests were conducted according to the test requirements outlines in 3GPP TS 34.121 specification.

A summary of these settings are illustrated below:

**HSDPA Setup Configuration:**

- a. The EUT was connected to Base Station Agilent E5515C referred to the Setup Configuration.
- b. The RF path losses were compensated into the measurements.
- c. A call was established between EUT and Base Station with following setting:
  - i. Set Gain Factors ( $\beta_c$  and  $\beta_d$ ) and parameters were set according to each
  - ii. Specific sub-test in the following table, C10.1.4, quoted from the TS 34.121
  - iii. Set RMC 12.2Kbps + HSDPA mode.
  - iv. Set Cell Power = -86 dBm
  - v. Set HS-DSCH Configuration Type to FRC (H-set 1, QPSK)
  - vi. Select HSDPA Uplink Parameters
  - vii. Set Delta ACK, Delta NACK and Delta CQI = 8
  - viii. Set Ack-Nack Repetition Factor to 3
  - ix. Set CQI Feedback Cycle (k) to 4 ms
  - x. Set CQI Repetition Factor to 2
  - xi. Power Ctrl Mode = All Up bits
- d. The transmitted maximum output power was recorded.

**Table C.10.1.4:  $\beta$  values for transmitter characteristics tests with HS-DPCCH**

Sub-test	$\beta_c$	$\beta_d$	$\beta_d$ (SF)	$\beta_c/\beta_d$	$\beta_{HS}$ (Note 1, Note 2)	CM (dB) (Note 3)	MPR (dB) (Note 3)
1	2/15	15/15	64	2/15	4/15	0.0	0.0
2	12/15 (Note 4)	15/15 (Note 4)	64	12/15 (Note 4)	24/15	1.0	0.0
3	15/15	8/15	64	15/8	30/15	1.5	0.5
4	15/15	4/15	64	15/4	30/15	1.5	0.5

Note 1:  $\Delta_{ACK}, \Delta_{NACK}$  and  $\Delta_{CQI} = 30/15$  with  $\beta_{HS} = 30/15 * \beta_c$ .

Note 2: For the HS-DPCCH power mask requirement test in clause 5.2C, 5.7A, and the Error Vector Magnitude (EVM) with HS-DPCCH test in clause 5.13.1A, and HSDPA EVM with phase discontinuity in clause 5.13.1AA,  $\Delta_{ACK}$  and  $\Delta_{NACK} = 30/15$  with  $\beta_{HS} = 30/15 * \beta_c$ , and  $\Delta_{CQI} = 24/15$  with  $\beta_{HS} = 24/15 * \beta_c$ .

Note 3: CM = 1 for  $\beta_c/\beta_d = 12/15, \beta_{HS}/\beta_c = 24/15$ . For all other combinations of DPDCH, DPCCH and HS-DPCCH the MPR is based on the relative CM difference. This is applicable for only UEs that support HSDPA in release 6 and later releases.

Note 4: For subtest 2 the  $\beta_c/\beta_d$  ratio of 12/15 for the TFC during the measurement period (TF1, TF0) is achieved by setting the signalled gain factors for the reference TFC (TF1, TF1) to  $\beta_c = 11/15$  and  $\beta_d = 15/15$ .

**Setup Configuration**

**HSUPA Setup Configuration:**

- a. The EUT was connected to Base Station Agilent E5515C referred to the Setup Configuration.
- b. The RF path losses were compensated into the measurements.
- c. A call was established between EUT and Base Station with following setting \* :
  - i. Call Configs = 5.2B, 5.9B, 5.10B, and 5.13.2B with QPSK
  - ii. Set the Gain Factors ( $\beta_c$  and  $\beta_d$ ) and parameters (AG Index) were set according to each specific sub-test in the following table, C11.1.3, quoted from the TS 34.121
  - iii. Set Cell Power = -86 dBm
  - iv. Set Channel Type = 12.2k + HSPA
  - v. Set UE Target Power
  - vi. Power Ctrl Mode= Alternating bits
  - vii. Set and observe the E-TFCl
  - viii. Confirm that E-TFCl is equal to the target E-TFCl of 75 for sub-test 1, and other subtest's E-TFCl
- d. The transmitted maximum output power was recorded.

**Table C.11.1.3:  $\beta$  values for transmitter characteristics tests with HS-DPCCH and E-DCH**

Sub-test	$\beta_c$	$\beta_d$	$\beta_d$ (SF)	$\beta_c/\beta_d$	$\beta_{HS}$ (Note 1)	$\beta_{ec}$	$\beta_{ed}$ (Note 5) (Note 6)	$\beta_{ed}$ (SF)	$\beta_{ed}$ (Codes)	CM (dB) (Note 2)	MPR (dB) (Note 2)	AG Index (Note 6)	E-TFCl
1	11/15 (Note 3)	15/15 (Note 3)	64	11/15 (Note 3)	22/15	209/225	1309/225	4	1	1.0	0.0	20	75
2	6/15	15/15	64	6/15	12/15	12/15	94/75	4	1	3.0	2.0	12	67
3	15/15	9/15	64	15/9	30/15	30/15	$\beta_{ed1}: 47/15$ $\beta_{ed2}: 47/15$	4	2	2.0	1.0	15	92
4	2/15	15/15	64	2/15	4/15	2/15	56/75	4	1	3.0	2.0	17	71
5	15/15 (Note 4)	15/15 (Note 4)	64	15/15 (Note 4)	30/15	24/15	134/15	4	1	1.0	0.0	21	81

Note 1:  $\Delta_{ACK}, \Delta_{NACK}$  and  $\Delta_{CQI} = 30/15$  with  $\beta_{hs} = 30/15 * \beta_c$ .

Note 2: CM = 1 for  $\beta_c/\beta_d = 12/15, \beta_{hs}/\beta_c = 24/15$ . For all other combinations of DPDCH, DPCCH, HS-DPCCH, E-DPDCH and E-DPCCH the MPR is based on the relative CM difference.

Note 3: For subtest 1 the  $\beta_c/\beta_d$  ratio of 11/15 for the TFC during the measurement period (TF1, TF0) is achieved by setting the signalled gain factors for the reference TFC (TF1, TF1) to  $\beta_c = 10/15$  and  $\beta_d = 15/15$ .

Note 4: For subtest 5 the  $\beta_c/\beta_d$  ratio of 15/15 for the TFC during the measurement period (TF1, TF0) is achieved by setting the signalled gain factors for the reference TFC (TF1, TF1) to  $\beta_c = 14/15$  and  $\beta_d = 15/15$ .

Note 5: In case of testing by UE using E-DPDCH Physical Layer category 1, Sub-test 3 is omitted according to TS25.306 Table 5.1g.

Note 6:  $\beta_{ed}$  can not be set directly, it is set by Absolute Grant Value.

**Setup Configuration**



**<WCDMA Conducted Power>**

**Note:**

1. Applying the subtest setup in Table C.11.1.3 of 3GPP TS 34.121-1 V9.1.0 to Rel. 6 HSPA.
2. By design, HSDPA/HSUPA RF power will not be larger than RMC 12.2kbps.

Band		WCDMA V			WCDMA II		
TX Channel		4132	4182	4233	9262	9400	9538
Rx Channel		4357	4407	4458	9662	9800	9938
Frequency (MHz)		826.4	836.4	846.6	1852.4	1880	1907.6
3GPP Rel 99	RMC 12.2Kbps	22.86	22.54	22.74	22.32	22.42	22.33
3GPP Rel 6	HSDPA Subtest-1	22.34	22.07	22.15	22.09	22.25	22.02
3GPP Rel 6	HSDPA Subtest-2	22.32	22.05	22.14	22.04	22.23	22.00
3GPP Rel 6	HSDPA Subtest-3	21.81	21.64	21.70	21.57	21.73	21.61
3GPP Rel 6	HSDPA Subtest-4	21.85	21.66	21.71	21.60	21.79	21.52
3GPP Rel 6	HSUPA Subtest-1	22.14	22.04	22.09	22.06	22.30	22.26
3GPP Rel 6	HSUPA Subtest-2	20.79	20.61	20.77	20.83	21.08	20.72
3GPP Rel 6	HSUPA Subtest-3	21.35	21.11	21.26	21.16	21.37	21.25
3GPP Rel 6	HSUPA Subtest-4	21.40	21.06	21.32	21.10	21.11	21.35
3GPP Rel 6	HSUPA Subtest-5	22.38	22.16	22.21	22.28	22.40	22.30
<b>MPR result</b>							
3GPP MPR specification		WCDMA V			WCDMA II		
0	HSDPA Subtest-1	0.00	0.00	0.00	0.00	0.00	0.00
0	HSDPA Subtest-2	0.02	0.02	0.01	0.05	0.02	0.02
≤0.5	HSDPA Subtest-3	0.53	0.43	0.45	0.52	0.52	0.41
≤0.5	HSDPA Subtest-4	0.49	0.41	0.44	0.49	0.46	0.50
≤0	HSUPA Subtest-1	0.24	0.12	0.12	0.22	0.10	0.04
≤2	HSUPA Subtest-2	1.59	1.55	1.44	1.45	1.32	1.58
≤1	HSUPA Subtest-3	1.03	1.05	0.95	1.12	1.03	1.05
≤2	HSUPA Subtest-4	0.98	1.10	0.89	1.18	1.29	0.95
≤0	HSUPA Subtest-5	0.00	0.00	0.00	0.00	0.00	0.00



<LTE Conducted Power>

Note:

1. Anritsu MT8820C base station simulator was used to setup the connection with EUT; the frequency band, channel bandwidth, RB allocation configuration, modulation type are set in the base station simulator to configure EUT transmitting at maximum power and at different configurations which are requested to be reported to FCC, for conducted power measurement and SAR testing.
2. Per KDB 941225 D05v02, when a properly configured base station simulator is used for the SAR and power measurements, spectrum plots for each RB allocation and offset configuration is not required.
3. Per KDB 941225 D05v02, start with the largest channel bandwidth and measure SAR for QPSK with 1 RB allocation, using the RB offset and required test channel combination with the highest maximum output power for RB offsets at the upper edge, middle and lower edge of each *required test channel*.
4. Per KDB 941225 D05v02, 50% RB allocation for QPSK SAR testing follows 1RB QPSK allocation procedure
5. 16QAM output power for each RB allocation configuration is not > ½ dB higher than the same configuration in QPSK
6. Smaller bandwidth output power for each RB allocation configuration is not > ½ dB higher than the same configuration in the largest supported bandwidth

<LTE Band 17 Conducted Power >

BW [MHz]	Modulation	RB Size	RB Offset	Power Low Ch. / Freq.	Power Middle Ch. / Freq.	Power High Ch. / Freq.	Target MPR	MPR Low Ch. / Freq.	MPR Middle Ch. / Freq.	MPR High Ch. / Freq.
Channel				23060	23095	23130		23060	23095	23130
Frequency (MHz)				704	707.5	711		704	707.5	711
10	QPSK	1	0	23.30	23.25	23.35	0	0.41	0.31	0.14
10	QPSK	1	24	23.57	23.07	23.49		0.14	0.49	0.00
10	QPSK	1	49	23.71	23.56	23.21		0.00	0.00	0.28
10	QPSK	25	0	22.36	22.27	22.16	1	1.35	1.29	1.33
10	QPSK	25	12	22.29	22.25	22.40		1.42	1.31	1.09
10	QPSK	25	24	22.34	22.42	22.54		1.37	1.14	0.95
10	QPSK	50	0	22.41	22.41	22.38		1.30	1.15	1.11
10	16QAM	1	0	22.60	22.10	22.16	1	1.11	1.46	1.33
10	16QAM	1	24	22.90	22.40	22.69		0.81	1.16	0.80
10	16QAM	1	49	22.77	22.79	22.49		0.94	0.77	1.00
10	16QAM	25	0	21.47	21.47	21.51	2	2.24	2.09	1.98
10	16QAM	25	12	21.57	21.59	21.54		2.14	1.97	1.95
10	16QAM	25	24	21.50	21.83	21.70		2.21	1.73	1.79
10	16QAM	50	0	21.23	21.56	21.45		2.48	2.00	2.04
Channel				23755	23790	23825		23755	23790	23825
Frequency (MHz)				706.5	710	713.5		706.5	710	713.5
5	QPSK	1	0	23.62	23.14	23.64	0	0.00	0.36	0.00
5	QPSK	1	12	23.60	23.50	23.50		0.02	0.00	0.14
5	QPSK	1	24	23.45	23.23	23.11		0.17	0.27	0.53
5	QPSK	12	0	22.45	22.40	22.47	1	1.17	1.10	1.17
5	QPSK	12	6	22.54	22.53	22.59		1.08	0.97	1.05
5	QPSK	12	11	22.50	22.60	22.53		1.12	0.90	1.11
5	QPSK	25	0	22.36	22.22	22.53		1.26	1.28	1.11
5	16QAM	1	0	22.36	22.46	22.34	1	1.26	1.04	1.30
5	16QAM	1	12	22.93	22.95	22.99		0.69	0.55	0.65
5	16QAM	1	24	22.96	22.50	22.52		0.66	1.00	1.12
5	16QAM	12	0	21.30	21.32	21.00	2	2.32	2.18	2.64
5	16QAM	12	6	21.38	21.17	21.13		2.24	2.33	2.51
5	16QAM	12	11	21.35	21.32	21.51		2.27	2.18	2.13
5	16QAM	25	0	21.84	21.57	21.79		1.78	1.93	1.85



<LTE Band 4 Conducted Power >

BW [MHz]	Modulation	RB Size	RB Offset	Power Low Ch. / Freq.	Power Middle Ch. / Freq.	Power High Ch. / Freq.	Target MPR	MPR Low Ch. / Freq.	MPR Middle Ch. / Freq.	MPR High Ch. / Freq.
Channel				20050	20175	20300		20050	20175	20300
Frequency (MHz)				1720	1732.5	1745		1720	1732.5	1745
20	QPSK	1	0	22.63	22.71	22.86	0	0.49	0.55	0.46
20	QPSK	1	49	23.12	23.26	23.32		0.00	0.00	0.00
20	QPSK	1	99	22.58	22.60	22.84		0.54	0.66	0.48
20	QPSK	50	0	21.95	21.87	22.09	1	1.17	1.39	1.23
20	QPSK	50	24	21.89	21.90	22.12		1.23	1.36	1.20
20	QPSK	50	49	21.79	22.02	21.82		1.33	1.24	1.50
20	QPSK	100	0	21.96	22.01	22.17	1	1.16	1.25	1.15
20	16QAM	1	0	22.42	22.34	22.28		0.70	0.92	1.04
20	16QAM	1	49	22.10	22.50	22.07		1.02	0.76	1.25
20	16QAM	1	99	22.76	22.51	22.48	2	0.36	0.75	0.84
20	16QAM	50	0	21.25	20.89	21.11		1.87	2.37	2.21
20	16QAM	50	24	20.97	21.05	21.28		2.15	2.21	2.04
20	16QAM	50	49	20.88	21.11	21.20	2	2.24	2.15	2.12
20	16QAM	100	0	20.90	21.20	21.06		2.22	2.06	2.26
Channel				20025	20175	20325			20025	20175
Frequency (MHz)				1717.5	1732.5	1747.5		1717.5	1732.5	1747.5
15	QPSK	1	0	22.94	22.83	22.96	0	0.07	0.11	0.18
15	QPSK	1	37	23.01	22.94	23.14		0.00	0.00	0.00
15	QPSK	1	74	22.83	22.90	22.75		0.18	0.04	0.39
15	QPSK	36	0	22.08	22.01	22.19	1	0.93	0.93	0.95
15	QPSK	36	19	22.02	21.98	22.15		0.99	0.96	0.99
15	QPSK	36	39	21.93	22.11	21.95		1.08	0.83	1.19
15	QPSK	75	0	21.85	22.07	22.04	1	1.16	0.87	1.10
15	16QAM	1	0	22.27	22.10	22.30		0.74	0.84	0.84
15	16QAM	1	37	22.01	22.35	22.50		1.00	0.59	0.64
15	16QAM	1	74	22.39	22.48	22.18	2	0.62	0.46	0.96
15	16QAM	38	0	21.13	21.06	21.12		1.88	1.88	2.02
15	16QAM	38	19	21.05	21.00	21.13		1.96	1.94	2.01
15	16QAM	38	39	20.95	21.11	20.92	2	2.06	1.83	2.22
15	16QAM	75	0	21.05	20.72	20.94		1.96	2.22	2.20
Channel				20000	20175	20350			20000	20175
Frequency (MHz)				1715	1732.5	1750		1715	1732.5	1750
10	QPSK	1	0	22.74	22.77	22.96	0	0.35	0.16	0.21
10	QPSK	1	24	23.09	22.69	23.17		0.00	0.24	0.00
10	QPSK	1	49	22.77	22.93	22.67		0.32	0.00	0.50
10	QPSK	25	0	22.04	21.99	22.12	1	1.05	0.94	1.05
10	QPSK	25	12	21.91	22.05	22.03		1.18	0.88	1.14
10	QPSK	25	24	21.88	21.88	21.79		1.21	1.05	1.38
10	QPSK	50	0	21.85	21.91	21.87	1	1.24	1.02	1.30
10	16QAM	1	0	22.47	22.09	22.20		0.62	0.84	0.97
10	16QAM	1	24	22.26	22.60	22.71		0.83	0.33	0.46
10	16QAM	1	49	21.70	22.03	22.01	2	1.39	0.90	1.16
10	16QAM	25	0	21.22	21.35	21.48		1.87	1.58	1.69
10	16QAM	25	12	21.29	21.15	21.39		1.80	1.78	1.78
10	16QAM	25	24	21.41	21.32	21.29	2	1.68	1.61	1.88
10	16QAM	50	0	20.90	20.86	21.01		2.19	2.07	2.16





Channel				19975	20175	20375		19975	20175	20375
Frequency (MHz)				1712.5	1732.5	1752.5		1712.5	1732.5	1752.5
5	QPSK	1	0	22.70	22.80	22.77	0	0.38	0.24	0.27
5	QPSK	1	12	23.08	23.04	23.04		0.00	0.00	0.00
5	QPSK	1	24	22.86	22.48	22.96	1	0.22	0.56	0.08
5	QPSK	12	0	21.96	21.91	21.83		1.12	1.13	1.21
5	QPSK	12	6	22.05	21.82	22.03	1	1.03	1.22	1.01
5	QPSK	12	11	21.85	21.88	21.88		1.23	1.16	1.16
5	QPSK	25	0	22.08	21.88	21.95	1	1.00	1.16	1.09
5	16QAM	1	0	21.92	21.73	22.20		1.16	1.31	0.84
5	16QAM	1	12	22.28	22.23	22.73	1	0.80	0.81	0.31
5	16QAM	1	24	21.59	22.05	22.00		1.49	0.99	1.04
5	16QAM	12	0	20.86	20.53	20.93	2	2.22	2.51	2.11
5	16QAM	12	6	21.21	21.22	20.97		1.87	1.82	2.07
5	16QAM	12	11	20.56	20.91	21.02	2	2.52	2.13	2.02
5	16QAM	25	0	21.30	21.31	21.28		1.78	1.73	1.76
Channel				19965	20175	20385		19965	20175	20385
Frequency (MHz)				1711.5	1732.5	1753.5		1711.5	1732.5	1753.5
3	QPSK	1	0	22.60	23.04	22.73	0	0.40	0.00	0.00
3	QPSK	1	7	22.55	22.74	22.55		0.45	0.30	0.18
3	QPSK	1	14	23.00	22.54	22.70	1	0.00	0.50	0.03
3	QPSK	8	0	21.82	21.85	21.92		1.18	1.19	0.81
3	QPSK	8	4	21.85	21.85	21.86	1	1.15	1.19	0.87
3	QPSK	8	7	21.88	21.80	21.75		1.12	1.24	0.98
3	QPSK	15	0	21.82	21.77	21.78	1	1.18	1.27	0.95
3	16QAM	1	0	21.66	21.69	21.84		1.34	1.35	0.89
3	16QAM	1	7	22.19	22.50	22.42	1	0.81	0.54	0.31
3	16QAM	1	14	22.22	22.10	22.07		0.78	0.94	0.66
3	16QAM	8	0	21.08	21.28	21.31	2	1.92	1.76	1.42
3	16QAM	8	4	21.17	21.08	21.27		1.83	1.96	1.46
3	16QAM	8	7	20.79	20.95	20.92	2	2.21	2.09	1.81
3	16QAM	15	0	20.83	20.68	20.78		2.17	2.36	1.95
Channel				19957	20175	20393		19957	20175	20393
Frequency (MHz)				1710.7	1732.5	1754.3		1710.7	1732.5	1754.3
1.4	QPSK	1	0	22.94	22.97	22.89	0	0.00	0.00	0.00
1.4	QPSK	1	2	22.89	22.92	22.78		0.05	0.05	0.11
1.4	QPSK	1	5	22.87	22.88	22.74	0	0.07	0.09	0.15
1.4	QPSK	3	0	22.84	22.90	22.85		0.10	0.07	0.04
1.4	QPSK	3	1	22.91	22.94	22.82	1	0.03	0.03	0.07
1.4	QPSK	3	2	22.82	22.78	22.76		0.12	0.19	0.13
1.4	QPSK	6	0	21.92	21.93	21.86	1	1.02	1.04	1.03
1.4	16QAM	1	0	22.53	22.30	22.51		0.41	0.67	0.38
1.4	16QAM	1	2	22.47	22.18	21.97	1	0.47	0.79	0.92
1.4	16QAM	1	5	22.23	22.41	22.07		0.71	0.56	0.82
1.4	16QAM	3	0	21.79	22.29	22.11	1	1.15	0.68	0.78
1.4	16QAM	3	1	22.21	22.12	22.05		0.73	0.85	0.84
1.4	16QAM	3	2	21.97	21.89	21.93	2	0.97	1.08	0.96
1.4	16QAM	6	0	20.86	21.00	21.13		2.08	1.97	1.76



<WLAN 2.4GHz Conducted Power>

<SISO mode Antenna A Conducted Power>

WLAN 2.4GHz 802.11b Average Power (dBm)						
Power vs. Channel			Power vs. Data Rate			
Channel	Freq.	Data Rate (bps)	Channel	Data Rate (bps)		
	(MHz)	1M		2M	5.5M	11M
CH 1	2412	15.11	CH 6	15.26	15.19	15.30
CH 6	2437	15.35				
CH 11	2462	14.96				

WLAN 2.4GHz 802.11g Average Power (dBm)										
Power vs. Channel			Power vs. Data Rate							
Channel	Frequency	Data Rate (bps)	Channel	Data Rate (bps)						
	(MHz)	6M		9M	12M	18M	24M	36M	48M	54M
CH 1	2412	13.99	CH 6	16.45	16.44	16.35	16.30	16.43	16.46	16.46
CH 6	2437	16.47								
CH 11	2462	13.87								

WLAN 2.4GHz 802.11n-HT20 Average Power (dBm)										
Power vs. Channel			Power vs. Data Rate							
Channel	Frequency	MCS Index	Channel	MCS Index						
	(MHz)	MCS0		MCS1	MCS2	MCS3	MCS4	MCS5	MCS6	MCS7
CH 1	2412	12.52	CH 6	16.15	16.15	16.10	16.11	16.08	16.12	16.12
CH 6	2437	16.19								
CH 11	2462	11.72								

WLAN 2.4GHz 802.11n-HT40 Average Power (dBm)										
Power vs. Channel			Power vs. Data Rate							
Channel	Frequency	MCS Index	Channel	MCS Index						
	(MHz)	MCS0		MCS1	MCS2	MCS3	MCS4	MCS5	MCS6	MCS7
CH 3	2422	8.94	CH 6	15.82	15.76	15.79	15.78	15.67	15.73	15.85
CH 6	2437	15.95								
CH 9	2452	9.46								

Note:

1. Per KDB 248227 D01 v01r02, choose the highest output power channel to test SAR and determine further SAR exclusion
2. For each frequency band, testing at higher data rates and higher order modulations is not required when the maximum average output power for each of these configurations is less than 1/4dB higher than those measured at the lowest data rate
3. Per KDB 248227 D01 v01r02, 11g, 11n-HT20 and 11n-HT40 average output power is higher than 1/4dB higher than 11b mode, these modes SAR will be verified at the highest RF exposure position found in 802.11b SAR testing.



<SISO mode Antenna B Conducted Power>

WLAN 2.4GHz 802.11b Average Power (dBm)						
Power vs. Channel			Power vs. Data Rate			
Channel	Freq.	Data Rate (bps)	Channel	Data Rate (bps)		
	(MHz)	1M		2M	5.5M	11M
CH 1	2412	14.92	CH 6	15.43	15.36	15.43
CH 6	2437	15.46				
CH 11	2462	15.01				

WLAN 2.4GHz 802.11g Average Power (dBm)										
Power vs. Channel			Power vs. Data Rate							
Channel	Frequency	Data Rate (bps)	Channel	Data Rate (bps)						
	(MHz)	6M		9M	12M	18M	24M	36M	48M	54M
CH 1	2412	13.96	CH 6	16.42	16.34	16.28	16.42	16.44	16.35	16.42
CH 6	2437	16.45								
CH 11	2462	13.82								

WLAN 2.4GHz 802.11n-HT20 Average Power (dBm)										
Power vs. Channel			Power vs. Data Rate							
Channel	Frequency	MCS Index	Channel	MCS Index						
	(MHz)	MCS0		MCS1	MCS2	MCS3	MCS4	MCS5	MCS6	MCS7
CH 1	2412	12.98	CH 6	16.24	16.16	15.95	16.27	16.04	16.22	16.27
CH 6	2437	16.28								
CH 11	2462	12.79								

WLAN 2.4GHz 802.11n-HT40 Average Power (dBm)										
Power vs. Channel			Power vs. Data Rate							
Channel	Frequency	MCS Index	Channel	MCS Index						
	(MHz)	MCS0		MCS1	MCS2	MCS3	MCS4	MCS5	MCS6	MCS7
CH 3	2422	9.04	CH 6	15.78	15.73	15.80	15.79	15.68	15.77	15.81
CH 6	2437	15.83								
CH 9	2452	9.61								

1. Per KDB 248227 D01 v01r02, choose the highest output power channel to test SAR and determine further SAR exclusion
2. For each frequency band, testing at higher data rates and higher order modulations is not required when the maximum average output power for each of these configurations is less than 1/4dB higher than those measured at the lowest data rate
3. Per KDB 248227 D01 v01r02, 11g, 11n-HT20 and 11n-HT40 average output power is higher than 1/4dB higher than 11b mode, these modes SAR will be verified at the highest RF exposure position found in 802.11b SAR testing.



<MIMO mode Antenna A+B Conducted Power>

WLAN 2.4GHz 802.11n-HT20 Average Power (dBm)										
Power vs. Channel			Power vs. Data Rate							
Channel	Frequency	MCS Index	Channel	MCS Index						
	(MHz)	MCS8		MCS9	MCS10	MCS11	MCS12	MCS13	MCS14	MCS15
CH 1	2412	14.35	CH 6	16.11	16.21	16.22	16.24	16.22	16.14	16.20
CH 6	2437	16.26								
CH 11	2462	14.31								

WLAN 2.4GHz 802.11n-HT40 Average Power (dBm)										
Power vs. Channel			Power vs. Data Rate							
Channel	Frequency	MCS Index	Channel	MCS Index						
	(MHz)	MCS8		MCS9	MCS10	MCS11	MCS12	MCS13	MCS14	MCS15
CH 3	2422	9.87	CH 6	15.90	15.86	15.92	15.88	15.79	15.88	15.88
CH 6	2437	15.93								
CH 9	2452	10.87								

Note:

1. Per KDB 248227 D01 v01r02, choose the highest output power channel to test SAR and determine further SAR exclusion
2. For each frequency band, testing at higher data rates and higher order modulations is not required when the maximum average output power for each of these configurations is less than 1/4dB higher than those measured at the lowest data rate.
3. Per KDB 248227 D01 v01r02, 11n-HT40 output power is less than 1/4dB higher than 802.11n-HT20 mode, thus the SAR can be excluded.

<Bluetooth Conducted Power>

Channel	Frequency (MHz)	(dBm)	
		Mode	
		GFSK	8-DPSK
CH 0	2402	1.25	3.62
CH 39	2441	2.03	4.27
CH 78	2480	2.08	4.24



<WLAN 5GHz Conducted Power>

<SISO mode Antenna A Conducted Power>

WLAN 5GHz 802.11a Average Power (dBm)																
Power vs. Channel			Power vs. Data Rate													
Channel	Frequency	Data Rate (bps)	Channel	Data Rate (bps)						9M	12M	18M	24M	36M	48M	54M
	(MHz)	6M		9M	12M	18M	24M	36M	48M							
CH 36	5180	14.27	CH 48	14.32	14.21	14.19	14.16	14.12	14.11	14.09						
CH 40	5200	13.79														
CH 44	5220	14.11														
CH 48	5240	14.36														
CH 52	5260	14.02	CH 60	14.32	14.27	14.22	14.21	14.16	14.21	14.22						
CH 56	5280	13.65														
CH 60	5300	14.35														
CH 64	5320	14.12														
CH 100	5500	14.56	CH 140	15.13	15.06	15.00	15.00	15.08	15.09	14.97						
CH 104	5520	13.85														
CH 108	5540	14.10														
CH 112	5560	14.58														
CH 116	5580	14.78														
CH 132	5660	14.77														
CH 136	5680	14.66														
CH 140	5700	15.15														
CH 149	5745	16.16	CH 157	16.22	16.18	16.18	16.22	16.26	16.27	16.27						
CH 153	5765	15.82														
CH 157	5785	16.29														
CH 161	5805	15.67														
CH 165	5825	16.28														

WLAN 5GHz 802.11n-HT20 Average Power (dBm)																
Power vs. Channel			Power vs. Data Rate													
Channel	Frequency	MCS Index	Channel	MCS Index						MCS1	MCS2	MCS3	MCS4	MCS5	MCS6	MCS7
	(MHz)	MCS0		MCS1	MCS2	MCS3	MCS4	MCS5	MCS6							
CH 36	5180	13.43	CH 48	14.20	14.22	14.20	14.22	14.23	14.19	14.18						
CH 40	5200	13.33														
CH 44	5220	14.17														
CH 48	5240	14.28														
CH 52	5260	14.38	CH 52	14.34	14.35	14.29	14.20	14.19	14.25	14.25						
CH 56	5280	13.79														
CH 60	5300	14.00														
CH 64	5320	13.94														
CH 100	5500	14.98	CH 116	14.91	14.97	14.95	15.00	14.99	15.03	14.89						
CH 104	5520	14.55														
CH 108	5540	14.60														
CH 112	5560	14.87														
CH 116	5580	15.05														
CH 132	5660	14.29														
CH 136	5680	14.31														
CH 140	5700	14.72														
CH 149	5745	16.41	CH 149	16.30	16.41	16.33	16.34	16.32	16.31	16.37						
CH 153	5765	16.16														
CH 157	5785	16.27														
CH 161	5805	16.09														
CH 165	5825	16.31														



WLAN 5GHz 802.11n-HT40 Average Power (dBm)										
Power vs. Channel			Power vs. Data Rate							
Channel	Frequency	MCS Index	Channel	MCS Index						
	(MHz)	MCS0		MCS1	MCS2	MCS3	MCS4	MCS5	MCS6	MCS7
CH 38	5190	8.69	CH 46	14.31	14.33	14.22	14.33	14.23	14.18	14.31
CH 46	5230	14.35								
CH 54	5270	14.46								
CH 62	5310	8.91	CH 54	14.36	14.43	14.34	14.37	14.37	14.33	14.43
CH 102	5510	11.21								
CH 110	5550	14.25	CH 134	14.81	14.73	14.65	14.61	14.71	14.55	14.68
CH 134	5670	14.83								
CH 151	5755	16.12	CH 159	16.32	16.32	16.37	16.37	16.37	16.18	16.39
CH 159	5795	16.45								

**Note:**

1. Per KDB 248227 D01 v01r02, choose the highest output power channel to test SAR and determine further SAR exclusion
2. For each frequency band, testing at higher data rates and higher order modulations is not required when the maximum average output power for each of these configurations is less than 1/4dB higher than those measured at the lowest data rate.
3. Per KDB 248227 D01 v01r02, 11n-HT20 and 11n-HT40 output power is less than 1/4dB higher than 802.11a mode, thus the SAR can be excluded.



<SISO mode Antenna B Conducted Power>

WLAN 5GHz 802.11a Average Power (dBm)											
Power vs. Channel			Power vs. Data Rate								
Channel	Frequency	Data Rate (bps)	Channel	Data Rate (bps)						48M	54M
	(MHz)	6M		9M	12M	18M	24M	36M			
CH 36	5180	15.05	CH 36	15.03	14.99	15.00	14.92	14.94	14.99	14.96	
CH 40	5200	14.09									
CH 44	5220	14.19									
CH 48	5240	14.28									
CH 52	5260	14.23	CH 52	14.22	14.19	14.19	14.07	14.06	14.04	13.94	
CH 56	5280	13.94									
CH 60	5300	14.09									
CH 64	5320	13.99									
CH 100	5500	14.59	CH 140	15.05	14.99	14.96	14.92	14.91	14.99	14.95	
CH 104	5520	14.09									
CH 108	5540	14.30									
CH 112	5560	14.47									
CH 116	5580	14.67									
CH 132	5660	14.87									
CH 136	5680	14.79									
CH 140	5700	15.06									
CH 149	5745	16.20	CH 165	16.33	16.20	16.16	16.32	16.30	16.27	16.34	
CH 153	5765	16.05									
CH 157	5785	16.26									
CH 161	5805	16.06?									
CH 165	5825	<b>16.37</b>									

WLAN 5GHz 802.11n-HT20 Average Power (dBm)										
Power vs. Channel			Power vs. Data Rate							
Channel	Frequency	MCS Index	Channel	MCS Index						
	(MHz)	MCS0		MCS1	MCS2	MCS3	MCS4	MCS5	MCS6	MCS7
CH 36	5180	13.14	CH 44	14.05	14.02	13.92	13.87	13.90	13.87	13.89
CH 40	5200	12.97								
CH 44	5220	14.08								
CH 48	5240	13.93								
CH 52	5260	13.85	CH 52	13.82	13.80	13.77	13.68	13.62	13.58	13.61
CH 56	5280	13.54								
CH 60	5300	13.66								
CH 64	5320	13.45								
CH 100	5500	14.28	CH 140	14.97	14.94	14.91	14.93	14.91	14.82	14.79
CH 104	5520	14.02								
CH 108	5540	14.20								
CH 112	5560	13.91								
CH 116	5580	14.36								
CH 132	5660	14.82								
CH 136	5680	14.77								
CH 140	5700	15.01								
CH 149	5745	16.39	CH 165	16.30	16.31	16.27	16.22	16.17	16.16	16.22
CH 153	5765	16.08								
CH 157	5785	16.41								
CH 161	5805	16.35								
CH 165	5825	<b>16.43</b>								



WLAN 5GHz 802.11n-HT40 Average Power (dBm)										
Power vs. Channel			Power vs. Data Rate							
Channel	Frequency	MCS Index	Channel	MCS Index						
	(MHz)	MCS0		MCS1	MCS2	MCS3	MCS4	MCS5	MCS6	MCS7
CH 38	5190	9.21	CH 46	14.02	14.09	14.06	14.11	14.02	14.05	14.08
CH 46	5230	14.18								
CH 54	5270	14.21								
CH 62	5310	8.36	CH 54	14.12	13.99	14.07	14.15	14.09	14.18	14.16
CH 102	5510	10.33								
CH 110	5550	14.64								
CH 134	5670	15.07	CH 134	14.96	14.90	15.01	14.94	15.01	14.97	14.91
CH 151	5755	15.83								
CH 159	5795	<b>16.13</b>								

**Note:**

1. Per KDB 248227 D01 v01r02, choose the highest output power channel to test SAR and determine further SAR exclusion
2. For each frequency band, testing at higher data rates and higher order modulations is not required when the maximum average output power for each of these configurations is less than 1/4dB higher than those measured at the lowest data rate.
3. Per KDB 248227 D01 v01r02, 11n-HT20 and 11n-HT40 output power is less than 1/4dB higher than 802.11a mode, thus the SAR can be excluded.





<MIMO mode Antenna A+B Conducted Power>

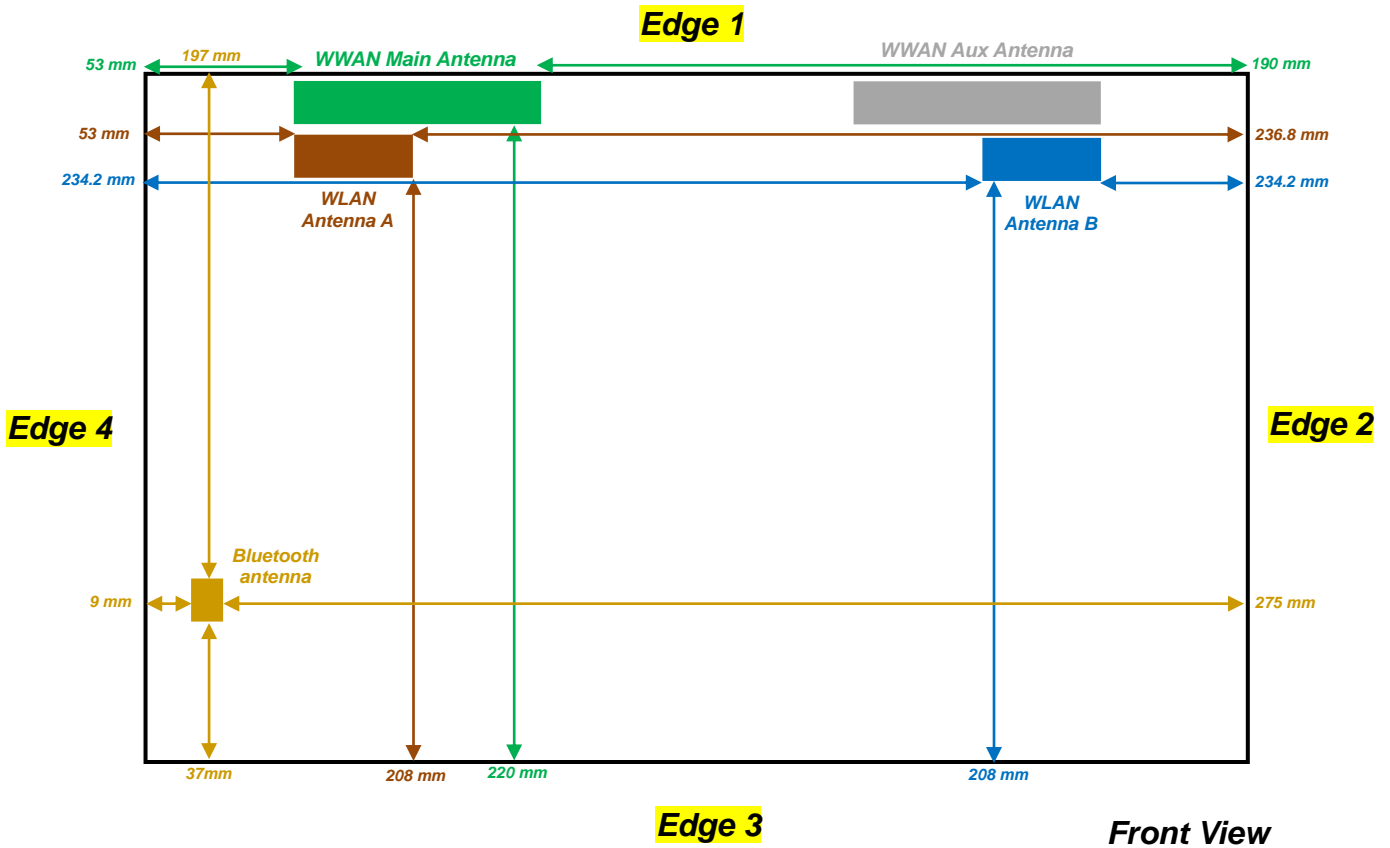
WLAN 5GHz 802.11n-HT20 Average Power (dBm)										
Power vs. Channel			Power vs. Data Rate							
Channel	Frequency (MHz)	MCS Index	Channel	MCS Index						
		MCS8		MCS9	MCS10	MCS11	MCS12	MCS13	MCS14	MCS15
CH 36	5180	13.01	CH 44	13.23	13.22	13.18	13.09	13.13	13.01	13.02
CH 40	5200	12.92								
CH 44	5220	13.25								
CH 48	5240	13.23								
CH 52	5260	12.91	CH 60	12.90	12.86	12.88	12.85	12.87	12.85	12.87
CH 56	5280	12.77								
CH 60	5300	12.92								
CH 64	5320	12.64								
CH 100	5500	13.83								
CH 104	5520	13.75	CH 140	14.00	13.93	13.76	13.75	13.75	13.70	13.69
CH 108	5540	13.73								
CH 112	5560	13.88								
CH 116	5580	14.10								
CH 132	5660	13.75								
CH 136	5680	13.84								
CH 140	5700	14.11								
CH 149	5745	15.93	CH 157	15.92	15.93	15.93	15.42	15.99	15.82	15.96
CH 153	5765	15.71								
CH 157	5785	16.00								
CH 161	5805	15.17								
CH 165	5825	15.59								

WLAN 5GHz 802.11n-HT40 Average Power (dBm)										
Power vs. Channel			Power vs. Data Rate							
Channel	Frequency (MHz)	MCS Index	Channel	MCS Index						
		MCS8		MCS9	MCS10	MCS11	MCS12	MCS13	MCS14	MCS15
CH 38	5190	11.14	CH 46	13.55	13.54	13.55	13.59	13.63	13.59	13.64
CH 46	5230	13.68								
CH 54	5270	12.98								
CH 62	5310	10.67	CH 54	12.87	12.92	12.80	12.89	12.83	12.78	12.77
CH 102	5510	12.98								
CH 110	5550	13.48								
CH 134	5670	13.79								
CH 151	5755	15.79	CH 159	15.76	15.73	15.56	15.54	15.60	15.68	15.72
CH 159	5795	15.80								

1. Per KDB 248227 D01 v01r02, choose the highest output power channel to test SAR and determine further SAR exclusion
2. For each frequency band, testing at higher data rates and higher order modulations is not required when the maximum average output power for each of these configurations is less than 1/4dB higher than those measured at the lowest data rate.
3. Per KDB 248227 D01 v01r02, 11n-HT40 (Freq: 5260MHz ~ 5825MHz) output power is less than 1/4dB higher than 802.11n-HT20 mode, thus the SAR can be excluded.
4. Per KDB 248227 D01 v01r02, 11n-HT40 (Freq: 5180MHz ~ 5240MHz) average output power is higher than 1/4dB higher than 11n-HT20 mode, these modes SAR will be verified at the highest RF exposure position found in 802.11n-HT20 SAR testing.

### 11. Exposure Positions Consideration

<Tablet PC>



Antennas	Wireless Interface
WWAN Main Antenna (Tx)	GSM850 GSM1900 WCDMA Band V WCDMA Band II LTE Band 17 LTE Band 4
WWAN Aux Antenna (Rx)	GSM850 GSM1900 WCDMA Band V WCDMA Band II LTE Band 17 LTE Band 4



<Exclusion table of WWAN RF Exposure of distance < 50mm>

Exposure Position	Wireless Interface	GPRS850 Class 10	GPRS1900 Class 10	WCDMA Band V	WCDMA Band II	LTE Band 17	LTE Band 4
Exposure Position	Tune-up Maximum power (dBm)	27	24	24	24	24	24
	Tune-up Maximum rated power (mW)	501.19	251.19	251.19	251.19	251.19	251.19
Bottom Face	Antenna to user (mm)	5					
	SAR exclusion threshold	92.31	69.41	46.21	69.38	42.42	66.53
	SAR testing required?	YES	YES	YES	YES	YES	YES
Edge 1	Antenna to user (mm)	5					
	SAR exclusion threshold	92.31	69.41	46.21	69.38	42.42	66.53
	SAR testing required?	YES	YES	YES	YES	YES	YES

<Exclusion table of WWAN RF Exposure of distance > 50mm>

Exposure Position	Wireless Interface	GPRS850 Class 10	GPRS1900 Class 10	WCDMA Band V	WCDMA Band II	LTE Band 17	LTE Band 4
Exposure Position	Tune-up Maximum power (dBm)	27	24	24	24	24	24
	Tune-up Maximum rated power (mW)	501.19	251.19	251.19	251.19	251.19	251.19
Edge 2	Antenna to user (mm)	190					
	SAR exclusion threshold (mW)	954	1509	953	1509	843	1513
	SAR testing required?	NO	NO	NO	NO	NO	NO
Edge 3	Antenna to user (mm)	220					
	SAR exclusion threshold (mW)	1124	1809	1122	1809	986	1813
	SAR testing required?	NO	NO	NO	NO	NO	NO
Edge 4	Antenna to user (mm)	53					
	SAR exclusion threshold (mW)	180	139	180	139	192	143
	SAR testing required?	YES	YES	YES	YES	YES	YES

Note:

- Maximum power is the source-based time-average power and represents the maximum RF output power among production units
- Per KDB 447498 D01v05, for larger devices, the *test separation distance* is determined by the closest separation between the antenna and the user.
- Per KDB 447498 D01v05, standalone SAR test exclusion threshold is applied; If the distance of the antenna to the user is < 5mm, 5mm is used to determine SAR exclusion threshold
- Per KDB 447498 D01v05, the 1-g and 10-g SAR test exclusion thresholds for 100 MHz to 6 GHz at *test separation distances* ≤ 50 mm are determined by:
 
$$[(\text{max. power of channel, including tune-up tolerance, mW}) / (\text{min. test separation distance, mm})] \cdot [\sqrt{f(\text{GHz})}] \leq 3.0$$
 for 1-g SAR and ≤ 7.5 for 10-g extremity SAR
  - f(GHz) is the RF channel transmit frequency in GHz
  - Power and distance are rounded to the nearest mW and mm before calculation
  - The result is rounded to one decimal place for comparison
- Per KDB 447498 D01v05, at 100 MHz to 6 GHz and for *test separation distances* > 50 mm, the SAR test exclusion threshold is determined according to the following
  - [Threshold at 50 mm in step 1) + (test separation distance - 50 mm) · ( f(MHz)/150)] mW, at 100 MHz to 1500 MHz
  - [Threshold at 50 mm in step 1) + (test separation distance - 50 mm) · 10] mW at > 1500 MHz and ≤ 6 GHz

## 12. SAR Test Results

**Note:**

- Per KDB 447498 D01v05, the reported SAR is the measured SAR value adjusted for maximum tune-up tolerance.  
 $Scaling\ Factor = \frac{tune-up\ limit\ power\ (mW)}{EUT\ RF\ power\ (mW)}$ , where tune-up limit is the maximum rated power among all production units.  
 $Reported\ SAR(W/kg) = Measured\ SAR(W/kg) * Scaling\ Factor$
- WLAN/Bluetooth module is also integrated into this host. Additional WLAN SAR testing was performed for simultaneous transmission analysis and WLAN/Bluetooth power is referred to Sprotn FCC SAR Report (FCC ID: Q2G16205-XPL, Report No: FA330725-01).

### 12.1 Test Records for Body SAR Test

**<GSM SAR>**

Plot No.	Band	Mode	Test Position	Gap (cm)	Ch.	Freq. (MHz)	Average Power (dBm)	Tune-Up Limit (dBm)	Tune-up Scaling Factor	Power Drift (dB)	Measured SAR 1g (W/kg)	Scaled SAR 1g (W/kg)
78	GSM850	GPRS (2 Tx slots)	Bottom Face	0cm	189	836.4	31.68	33	1.355	-0.03	0.235	0.318
79	GSM850	GPRS (2 Tx slots)	Edge1	0cm	189	836.4	31.68	33	1.355	0.03	0.726	0.984
80	GSM850	GPRS (2 Tx slots)	Edge1	0cm	128	824.2	31.62	33	1.374	-0.03	0.787	1.081
81	<b>GSM850</b>	<b>GPRS (2 Tx slots)</b>	<b>Edge1</b>	<b>0cm</b>	<b>251</b>	<b>848.8</b>	<b>31.56</b>	<b>33</b>	<b>1.393</b>	<b>0.06</b>	<b>0.876</b>	<b>1.220</b>
83	GSM850	GPRS (2 Tx slots)	Edge4	0cm	189	836.4	31.68	33	1.355	-0.01	0.076	0.103
89	GSM1900	GPRS (2 Tx slots)	Bottom Face	0cm	661	1880	29.1	30	1.230	-0.07	0.118	0.145
90	<b>GSM1900</b>	<b>GPRS (2 Tx slots)</b>	<b>Edge 1</b>	<b>0cm</b>	<b>661</b>	<b>1880</b>	<b>29.1</b>	<b>30</b>	<b>1.230</b>	<b>-0.1</b>	<b>0.402</b>	<b>0.495</b>
91	GSM1900	GPRS (2 Tx slots)	Edge 4	0cm	661	1880	29.1	30	1.230	-0.01	0.024	0.030

**<WCDMA SAR>**

Plot No.	Band	Mode	Test Position	Gap (cm)	Ch.	Freq. (MHz)	Average Power (dBm)	Tune-Up Limit (dBm)	Tune-up Scaling Factor	Power Drift (dB)	Measured SAR 1g (W/kg)	Scaled SAR 1g (W/kg)
84	WCDMA V	RMC12.2Kbps	Bottom Face	0cm	4132	826.4	22.86	24	1.300	-0.15	0.138	0.179
85	<b>WCDMA V</b>	<b>RMC12.2Kbps</b>	<b>Edge1</b>	<b>0cm</b>	<b>4132</b>	<b>826.4</b>	<b>22.86</b>	<b>24</b>	<b>1.300</b>	<b>-0.03</b>	<b>0.412</b>	<b>0.536</b>
86	WCDMA V	RMC12.2Kbps	Edge4	0cm	4132	826.4	22.86	24	1.300	-0.14	0.044	0.057
94	WCDMA II	RMC12.2Kbps	Bottom Face	0cm	9400	1880	22.42	24	1.439	0.01	0.097	0.140
95	<b>WCDMA II</b>	<b>RMC12.2Kbps</b>	<b>Edge 1</b>	<b>0cm</b>	<b>9400</b>	<b>1880</b>	<b>22.42</b>	<b>24</b>	<b>1.439</b>	<b>0.02</b>	<b>0.301</b>	<b>0.433</b>
96	WCDMA II	RMC12.2Kbps	Edge 4	0cm	9400	1880	22.42	24	1.439	0.03	0.019	0.027

**Note:**

- Per KDB 941225 D01, RMC 12.2kbps setting is used to evaluate SAR. If HSDPA/HSUPA output power is < 0.25dB higher than RMC, or reported SAR with RMC 12.2kbps setting is ≤ 1.2W/kg, HSDPA/HSUPA SAR evaluation can be excluded.

<LTE SAR>

Plot No.	Band	BW (MHz)	Modulation	RB Size	RB offset	Test Position	Gap (cm)	Ch.	Freq. (MHz)	Average Power (dBm)	Tune-Up Limit (dBm)	Tune-up Scaling Factor	Power Drift (dB)	Measured SAR 1g (W/kg)	Scaled SAR 1g (W/kg)
109	LTE Band 17	10M	QPSK	1	49	Bottom Face	0cm	23780	709	23.71	24	1.069	0.12	0.293	0.313
110	LTE Band 17	10M	QPSK	25	24	Bottom Face	0cm	23800	711	22.54	23	1.112	-0.03	0.232	0.258
111	LTE Band 17	10M	QPSK	1	49	Edge 1	0cm	23780	709	23.71	24	1.069	-0.05	0.388	0.415
112	LTE Band 17	10M	QPSK	25	24	Edge 1	0cm	23800	711	22.54	23	1.112	0.04	0.31	0.345
113	LTE Band 17	10M	QPSK	1	49	Edge 4	0cm	23780	709	23.71	24	1.069	0.07	0.117	0.125
114	LTE Band 17	10M	QPSK	25	24	Edge 4	0cm	23800	711	22.54	23	1.112	-0.01	0.093	0.103
99	LTE Band 4	20M	QPSK	1	49	Bottom Face	0cm	20300	1745	23.32	24	1.169	-0.01	0.2	0.234
100	LTE Band 4	20M	QPSK	50	24	Bottom Face	0cm	20300	1745	22.12	23	1.225	0	0.155	0.190
101	LTE Band 4	20M	QPSK	1	49	Edge 1	0cm	20300	1745	23.32	24	1.169	0.06	0.752	0.879
102	LTE Band 4	20M	QPSK	1	49	Edge 1	0cm	20050	1720	23.12	24	1.225	0.02	0.784	0.960
103	LTE Band 4	20M	QPSK	1	49	Edge 1	0cm	20175	1732.5	23.26	24	1.186	0.05	0.835	0.990
104	LTE Band 4	20M	QPSK	50	24	Edge 1	0cm	20300	1745	22.12	23	1.225	0.06	0.596	0.730
105	LTE Band 4	20M	QPSK	100	0	Edge 1	0cm	20300	1745	22.17	23	1.211	0.04	0.598	0.724
106	LTE Band 4	20M	QPSK	1	49	Edge 4	0cm	20300	1745	23.32	24	1.169	0.01	0.078	0.091
107	LTE Band 4	20M	QPSK	50	24	Edge 4	0cm	20300	1745	22.12	23	1.225	0	0.061	0.075

Note:

- Per KDB 941225 D05v02, when reported SAR of 1RB and 50%RB allocation for QPSK >0.8W/kg for any exposure position, SAR testing of 100%RB allocation for QPSK is performed at the highest power channel.
- 16QAM output power for each RB allocation configuration is > not ½ dB higher than the same configuration in QPSK and the reported SAR for the QPSK configuration is ≤ 1.45 W/kg; Per KDB 941225 D05v02, 16QAM SAR testing is not required.
- Smaller bandwidth output power for each RB allocation configuration is > not ½ dB higher than the same configuration in the largest supported bandwidth.

<WLAN SAR DTS>

Plot No.	Band	Mode	Test Position	Gap (cm)	Ant.	Ch.	Freq. (MHz)	Data Rate	Average Power (dBm)	Tune-Up Limit (dBm)	Tune-up Scaling Factor	Power Drift (dB)	Measured SAR 1g (W/kg)	Scaled SAR 1g (W/kg)
22	WLAN2.4G	802.11g	Bottom Face	0cm	Ant A	6	2437	1Mbps	15.35	15.5	1.036	0.16	0.066	0.068
23	WLAN2.4G	802.11g	Bottom Face	0cm	Ant A	6	2437	6Mbps	16.47	16.5	1.007	0.15	0.16	0.161
24	WLAN2.4G	802.11n-HT20	Bottom Face	0cm	Ant A	6	2437	MCS0	16.19	16.5	1.075	-0.12	0.157	0.169
25	WLAN2.4G	802.11n-HT40	Bottom Face	0cm	Ant A	6	2437	MCS0	15.95	16	1.012	0.03	0.208	0.211
21	WLAN2.4G	802.11b	Edge1	0cm	Ant A	6	2437	1Mbps	15.35	15.5	1.036	-0.01	0.034	0.035
28	WLAN2.4G	802.11b	Bottom Face	0cm	Ant B	6	2437	1Mbps	15.46	15.5	1.010	0.1	0.024	0.024
29	WLAN2.4G	802.11b	Edge 1	0cm	Ant B	6	2437	1Mbps	15.46	15.5	1.010	0.04	0.066	0.067
30	WLAN2.4G	802.11g	Edge 1	0cm	Ant B	6	2437	6Mbps	16.45	16.5	1.012	0.15	0.156	0.158
31	WLAN2.4G	802.11n-HT20	Edge 1	0cm	Ant B	6	2437	MCS0	16.28	16.5	1.053	0	0.152	0.160
32	WLAN2.4G	802.11n-HT40	Edge 1	0cm	Ant B	6	2437	MCS0	15.83	16	1.039	0.01	0.144	0.150
35	WLAN2.4G	802.11n-HT20	Bottom Face	0cm	Ant A+B	6	2437	MCS8	16.26	16.5	1.057	0.177	0.084	0.089
36	WLAN2.4G	802.11n-HT20	Edge 1	0cm	Ant A+B	6	2437	MCS8	16.26	16.5	1.057	0.12	0.078	0.082
42	WLAN5GHz	802.11a	Bottom Face	0cm	Ant A	157	5785	6Mbps	16.29	16.5	1.049	-0.01	0.165	0.173
74	WLAN5GHz	802.11a	Edge1	0cm	Ant A	157	5785	6Mbps	16.29	16.5	1.049	-0.093	0.159	0.167
56	WLAN5GHz	802.11a	Bottom Face	0cm	Ant B	165	5825	6Mbps	16.37	16.5	1.030	-0.11	0.037	0.038
76	WLAN5GHz	802.11a	Edge1	0cm	Ant B	165	5825	6Mbps	16.37	16.5	1.030	-0.099	0.018	0.019
119	WLAN5GHz	802.11n-HT20	Bottom Face	0cm	Ant A+B	157	5785	MCS8	16.00	16	1.000	-0.05	0.102	0.102
71	WLAN5GHz	802.11n-HT20	Edge1	0cm	Ant A+B	157	5785	MCS8	16.00	16	1.000	-0.16	0.099	0.099



<WLAN SAR NII>

Plot No.	Band	Mode	Test Position	Gap (cm)	Ant.	Ch.	Freq. (MHz)	Data Rate	Average Power (dBm)	Tune-Up Limit (dBm)	Tune-up Scaling Factor	Power Drift (dB)	Measured SAR 1g (W/kg)	Scaled SAR 1g (W/kg)
39	WLAN5GHz	802.11a	Bottom Face	0cm	Ant A	48	5240	6Mbps	14.36	14.5	1.033	0.04	0.049	0.051
59	WLAN5GHz	802.11a	Edge1	0cm	Ant A	48	5240	6Mbps	14.36	14.5	1.033	-0.08	0.026	0.027
40	WLAN5GHz	802.11a	Bottom Face	0cm	Ant A	60	5300	6Mbps	14.35	14.5	1.035	-0.052	0.035	0.036
60	WLAN5GHz	802.11a	Edge1	0cm	Ant A	60	5300	6Mbps	14.35	14.5	1.035	-0.12	0.018	0.019
41	WLAN5GHz	802.11a	Bottom Face	0cm	Ant A	140	5700	6Mbps	15.15	15.5	1.084	-0.09	0.084	0.091
73	WLAN5GHz	802.11a	Edge1	0cm	Ant A	140	5700	6Mbps	15.15	15.5	1.084	-0.06	0.083	0.090
49	WLAN5GHz	802.11a	Bottom Face	0cm	Ant B	36	5180	6Mbps	15.05	15.5	1.109	0.13	0.034	0.038
61	WLAN5GHz	802.11a	Edge1	0cm	Ant B	36	5180	6Mbps	15.05	15.5	1.109	-0.01	0.032	0.035
51	WLAN5GHz	802.11a	Bottom Face	0cm	Ant B	52	5260	6Mbps	14.23	14.5	1.064	-0.18	0.051	0.054
62	WLAN5GHz	802.11a	Edge1	0cm	Ant B	52	5260	6Mbps	14.23	14.5	1.064	0.01	0.048	0.051
53	WLAN5GHz	802.11a	Bottom Face	0cm	Ant B	140	5700	6Mbps	15.06	15.5	1.107	-0.155	0.027	0.030
75	WLAN5GHz	802.11a	Edge1	0cm	Ant B	140	5700	6Mbps	15.06	15.5	1.107	-0.046	0.016	0.018
63	WLAN5GHz	802.11n-HT20	Bottom Face	0cm	Ant A+B	44	5220	MCS8	13.25	13.5	1.059	-0.1	0.0135	0.014
65	WLAN5GHz	802.11n-HT40	Bottom Face	0cm	Ant A+B	46	5230	MCS8	13.68	14	1.076	0.05	0.017	0.018
64	WLAN5GHz	802.11n-HT20	Edge1	0cm	Ant A+B	44	5220	MCS8	13.25	13.5	1.059	-0.1	0.013	0.014
67	WLAN5GHz	802.11n-HT20	Bottom Face	0cm	Ant A+B	60	5300	MCS8	12.92	13	1.019	-0.1	0.032	0.033
68	WLAN5GHz	802.11n-HT20	Edge1	0cm	Ant A+B	60	5300	MCS8	12.92	13	1.019	0.13	0.03	0.031
72	WLAN5GHz	802.11n-HT20	Bottom Face	0cm	Ant A+B	140	5700	MCS8	14.11	14.5	1.094	0.16	0.03	0.033
70	WLAN5GHz	802.11n-HT20	Edge1	0cm	Ant A+B	140	5700	MCS8	14.11	14.5	1.094	-0.09	0.027	0.030



12.2 Repeated SAR Measurement

Plot No.	Band	BW (MHz)	Modulation	RB Size	RB offset	Mode	Test Position	Gap (cm)	Ch.	Freq. (MHz)	Average Power (dBm)	Tune-Up Limit (dBm)	Tune-up Scaling Factor	Power Drift (dB)	Measured SAR 1g (W/kg)	Ratio	Scaled SAR 1g (W/kg)
103	LTE Band 4	20M	QPSK	1	49	-	Edge 1	0cm	20175	1732.5	23.26	24	1.186	0.05	0.835	1	0.990
108	LTE Band 4	20M	QPSK	1	49	-	Edge 1	0cm	20175	1732.5	23.26	24	1.186	0.04	0.83	1.04	0.984
81	GSM850	-	-	-	-	GPRS (2 Tx slots)	Edge1	0cm	251	848.8	31.56	33	1.393	0.06	0.876	1	1.220
82	GSM850	-	-	-	-	GPRS (2 Tx slots)	Edge1	0cm	251	848.8	31.56	33	1.393	0	0.871	1.01	1.213

Note:

1. Per KDB 865664 D01v01, for each frequency band, repeated SAR measurement is required only when the measured SAR is  $\geq 0.8W/kg$
2. Per KDB 865664 D01v01, if the ratio among the repeated measurement is  $\leq 1.2$  and the measured SAR  $< 1.45W/kg$ , only one repeated measurement is required.
3. The ratio is the difference in percentage between original and repeated *measured* SAR.
4. All measurement SAR result is scaled-up to account for tune-up tolerance and is compliant.

**12.3 Highest SAR Plot**

Test Laboratory: Sporton International Inc. SAR/HAC Testing Lab

Date: 2013/3/21

**#81\_GSM850\_GPRS (2 Tx slots)\_Edge1\_0cm\_Ch251**

**DUT: 330705**

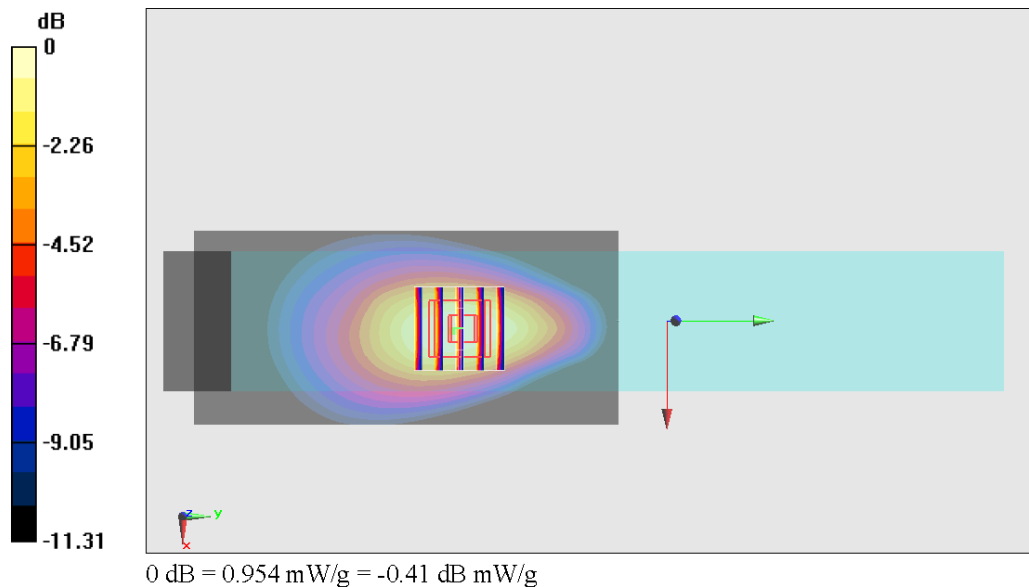
Communication System: GSM850; Frequency: 848.8 MHz; Duty Cycle: 1:4  
 Medium: MSL\_850\_130321 Medium parameters used:  $f = 849$  MHz;  $\sigma = 1.01$  mho/m;  $\epsilon_T = 55.298$ ;  $\rho = 1000$  kg/m<sup>3</sup>  
**Ambient Temperature : 22.5 °C; Liquid Temperature : 21.5 °C**

DASY5 Configuration:

- Probe: ET3DV6 - SN1787; ConvF(6.08, 6.08, 6.08); Calibrated: 2012/5/29;
- Sensor-Surface: 4mm (Mechanical Surface Detection)
- Electronics: DAE3 Sn495; Calibrated: 2012/4/23
- Phantom: ELI v4.0; Type: QDOVA001BB; Serial: TP:1127
- Measurement SW: DASY52, Version 52.8 (3); SEMCAD X Version 14.6.5 (6469)

**Configuration/Ch251/Area Scan (51x111x1):** Measurement grid: dx=15mm, dy=15mm  
 Maximum value of SAR (interpolated) = 1.00 mW/g

**Configuration/Ch251/Zoom Scan (5x5x7)/Cube 0:** Measurement grid: dx=8mm, dy=8mm, dz=5mm  
 Reference Value = 31.633 V/m; Power Drift = 0.06 dB  
 Peak SAR (extrapolated) = 1.311 mW/g  
**SAR(1 g) = 0.876 mW/g; SAR(10 g) = 0.558 mW/g**  
 Maximum value of SAR (measured) = 0.954 mW/g





Test Laboratory: Sporton International Inc. SAR/HAC Testing Lab

Date: 2013/3/21

**#90\_GSM1900\_GPRS (2 Tx slots)\_Edge 1\_0cm\_Ch661**

**DUT: 330705**

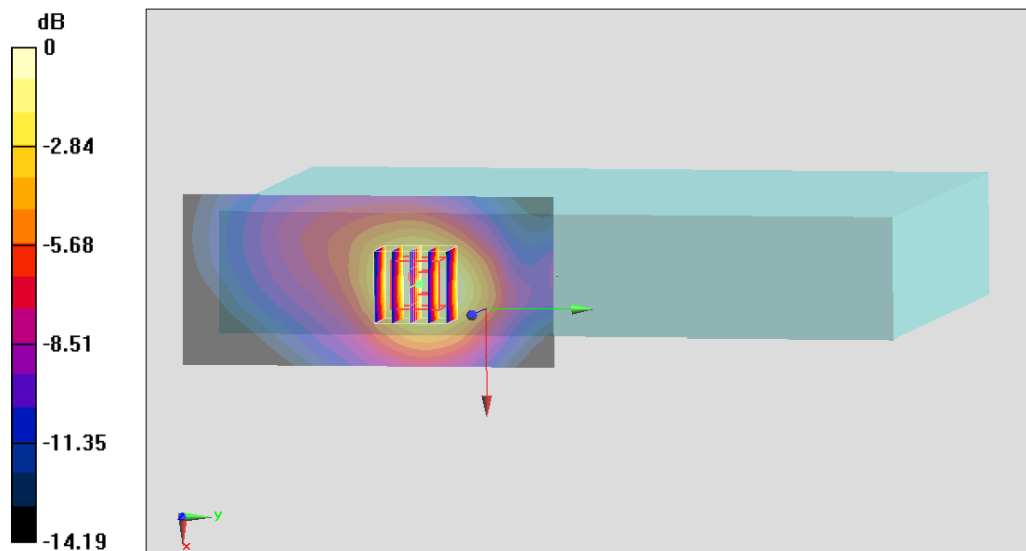
Communication System: PCS; Frequency: 1880 MHz; Duty Cycle: 1:4  
 Medium: MSL\_1900\_130321 Medium parameters used:  $f = 1880$  MHz;  $\sigma = 1.494$  mho/m;  $\epsilon_r = 54.634$ ;  $\rho = 1000$  kg/m<sup>3</sup>  
**Ambient Temperature : 22.4 °C; Liquid Temperature : 21.4 °C**

DASY5 Configuration:

- Probe: ET3DV6 - SN1787; ConvF(4.58, 4.58, 4.58); Calibrated: 2012/5/29;
- Sensor-Surface: 4mm (Mechanical Surface Detection)
- Electronics: DAE3 Sn495; Calibrated: 2012/4/23
- Phantom: ELI v4.0; Type: QDOVA001BB; Serial: TP:1127
- Measurement SW: DASY52, Version 52.8 (3); SEMCAD X Version 14.6.5 (6469)

**Configuration/Ch661/Area Scan (51x111x1):** Measurement grid: dx=15mm, dy=15mm  
 Maximum value of SAR (interpolated) = 0.507 mW/g

**Configuration/Ch661/Zoom Scan (5x5x7)/Cube 0:** Measurement grid: dx=8mm, dy=8mm, dz=5mm  
 Reference Value = 18.683 V/m; Power Drift = -0.10 dB  
 Peak SAR (extrapolated) = 0.567 mW/g  
**SAR(1 g) = 0.402 mW/g; SAR(10 g) = 0.256 mW/g**  
 Maximum value of SAR (measured) = 0.437 mW/g



0 dB = 0.437 mW/g = -7.19 dB mW/g

Test Laboratory: Sporton International Inc. SAR/HAC Testing Lab

Date: 2013/3/21

**#85\_WCDMA V\_RMC12.2Kbps\_Edge1\_0cm\_Ch4132**

**DUT: 330705**

Communication System : WCDMA; Frequency: 826.4 MHz; Duty Cycle: 1:1  
 Medium: MSL\_850\_130321 Medium parameters used:  $f = 826.4 \text{ MHz}$ ;  $\sigma = 0.988 \text{ mho/m}$ ;  $\epsilon_r = 55.443$ ;  $\rho = 1000 \text{ kg/m}^3$

**Ambient Temperature : 22.5 °C; Liquid Temperature : 21.5 °C**

DASY5 Configuration:

- Probe: ET3DV6 - SN1787; ConvF(6.08, 6.08, 6.08); Calibrated: 2012/5/29;
- Sensor-Surface: 4mm (Mechanical Surface Detection)
- Electronics: DAE3 Sn495; Calibrated: 2012/4/23
- Phantom: ELI v4.0; Type: QDOVA001BB; Serial: TP:1127
- Measurement SW: DASY52, Version 52.8 (3); SEMCAD X Version 14.6.5 (6469)

**Configuration/Ch4132/Area Scan (51x111x1):** Measurement grid:  $dx=15\text{mm}$ ,  $dy=15\text{mm}$   
 Maximum value of SAR (interpolated) = 0.480 mW/g

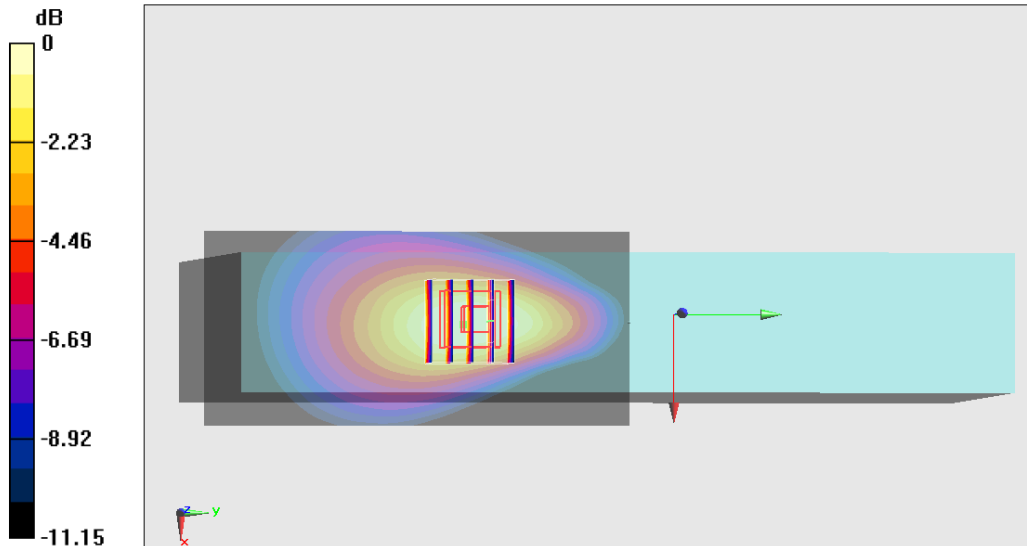
**Configuration/Ch4132/Zoom Scan (5x5x7)/Cube 0:** Measurement grid:  $dx=8\text{mm}$ ,  $dy=8\text{mm}$ ,  $dz=5\text{mm}$

Reference Value = 21.971 V/m; Power Drift = -0.03 dB

Peak SAR (extrapolated) = 0.616 mW/g

**SAR(1 g) = 0.412 mW/g; SAR(10 g) = 0.265 mW/g**

Maximum value of SAR (measured) = 0.444 mW/g



0 dB = 0.444 mW/g = -7.05 dB mW/g

Test Laboratory: Sporton International Inc. SAR/HAC Testing Lab

Date: 2013/3/21

**#95\_WCDMA II\_RMC12.2Kbps\_Edge 1\_0cm\_Ch9400**

**DUT: 330705**

Communication System: WCDMA; Frequency: 1880 MHz; Duty Cycle: 1:1

Medium: MSL\_1900\_130321 Medium parameters used:  $f = 1880$  MHz;  $\sigma = 1.494$  mho/m;  $\epsilon_r = 54.634$ ;  $\rho = 1000$  kg/m<sup>3</sup>

**Ambient Temperature : 22.4 °C; Liquid Temperature : 21.4 °C**

DASY5 Configuration:

- Probe: ET3DV6 - SN1787; ConvF(4.58, 4.58, 4.58); Calibrated: 2012/5/29;
- Sensor-Surface: 4mm (Mechanical Surface Detection)
- Electronics: DAE3 Sn495; Calibrated: 2012/4/23
- Phantom: ELI v4.0; Type: QDOVA001BB; Serial: TP:1127
- Measurement SW: DASY52, Version 52.8 (3); SEMCAD X Version 14.6.5 (6469)

**Configuration/Ch9400/Area Scan (51x11x1):** Measurement grid: dx=15mm, dy=15mm

Maximum value of SAR (interpolated) = 0.326 mW/g

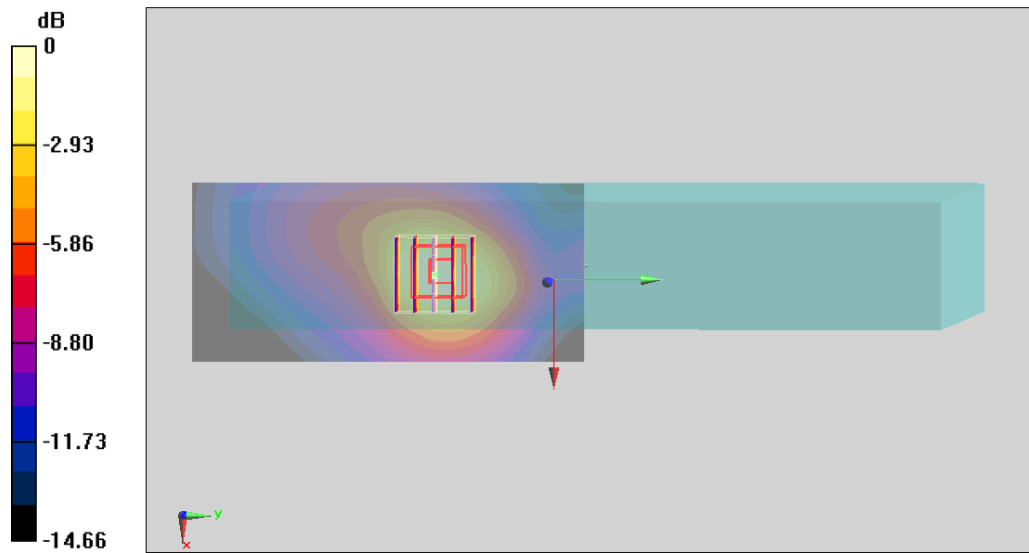
**Configuration/Ch9400/Zoom Scan (5x5x7)/Cube 0:** Measurement grid: dx=8mm, dy=8mm, dz=5mm

Reference Value = 15.914 V/m; Power Drift = 0.02 dB

Peak SAR (extrapolated) = 0.423 mW/g

**SAR(1 g) = 0.301 mW/g; SAR(10 g) = 0.191 mW/g**

Maximum value of SAR (measured) = 0.326 mW/g



0 dB = 0.326 mW/g = -9.74 dB mW/g

Test Laboratory: Sporton International Inc. SAR/HAC Testing Lab

Date: 2013/3/22

**#111\_LTE Band 17\_10M\_QPSK\_1RB\_49Offset\_Edge 1\_0cm\_Ch23780**

**DUT: 330705**

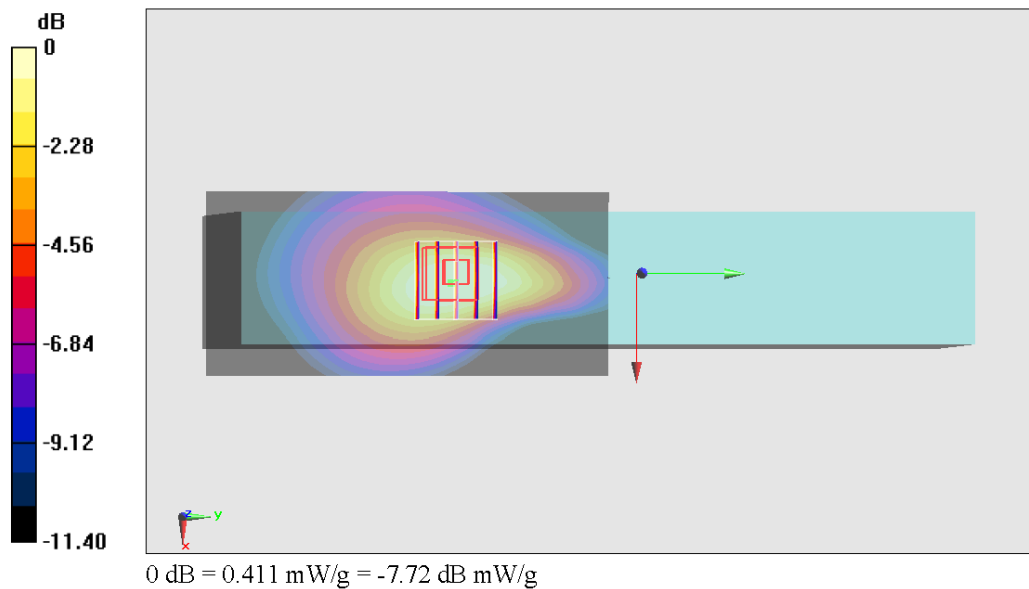
Communication System: LTE; Frequency: 709 MHz; Duty Cycle: 1:1  
 Medium: MSL\_750\_130322 Medium parameters used:  $f = 709$  MHz;  $\sigma = 0.942$  mho/m;  $\epsilon_r = 55.563$ ;  $\rho = 1000$  kg/m<sup>3</sup>  
**Ambient Temperature : 22.5 °C; Liquid Temperature : 21.5 °C**

DASY5 Configuration:

- Probe: ET3DV6 - SN1787; ConvF(6.2, 6.2, 6.2); Calibrated: 2012/5/29;
- Sensor-Surface: 4mm (Mechanical Surface Detection)
- Electronics: DAE3 Sn495; Calibrated: 2012/4/23
- Phantom: ELI v4.0; Type: QDOVA001BB; Serial: TP:1127
- Measurement SW: DASY52, Version 52.8 (3); SEMCAD X Version 14.6.5 (6469)

**Configuration/Ch23780/Area Scan (51x111x1):** Measurement grid: dx=15mm, dy=15mm  
 Maximum value of SAR (interpolated) = 0.447 mW/g

**Configuration/Ch23780/Zoom Scan (5x5x7)/Cube 0:** Measurement grid: dx=8mm, dy=8mm, dz=5mm  
 Reference Value = 21.502 V/m; Power Drift = -0.05 dB  
 Peak SAR (extrapolated) = 0.615 mW/g  
**SAR(1 g) = 0.388 mW/g; SAR(10 g) = 0.252 mW/g**  
 Maximum value of SAR (measured) = 0.411 mW/g



Test Laboratory: Sporton International Inc. SAR/HAC Testing Lab

Date: 2013/3/22

**#103\_LTE Band 4\_20M\_QPSK\_1RB\_49Offset\_Edge 1\_0cm\_Ch20175**

**DUT: 330705**

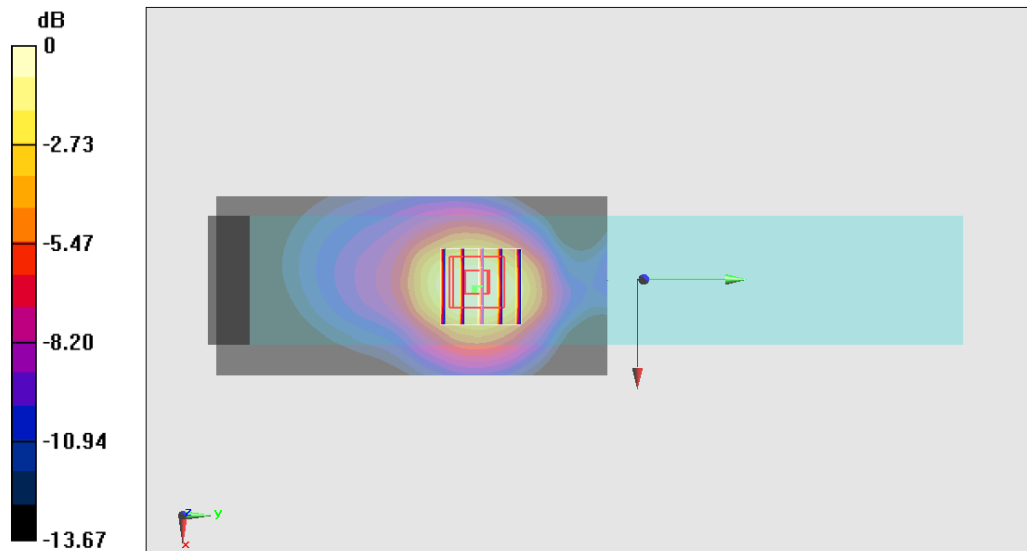
Communication System: LTE; Frequency: 1732.5 MHz; Duty Cycle: 1:1  
 Medium: MSL\_1750\_130322 Medium parameters used:  $f = 1732.5$  MHz;  $\sigma = 1.489$  mho/m;  $\epsilon_r = 52.468$ ;  
 $\rho = 1000$  kg/m<sup>3</sup>  
**Ambient Temperature : 22.6 °C; Liquid Temperature : 21.6 °C**

DASY5 Configuration:

- Probe: ET3DV6 - SN1787; ConvF(4.81, 4.81, 4.81); Calibrated: 2012/5/29;
- Sensor-Surface: 4mm (Mechanical Surface Detection)
- Electronics: DAE3 Sn495; Calibrated: 2012/4/23
- Phantom: ELI v4.0; Type: QDOVA001BB; Serial: TP:1127
- Measurement SW: DASY52, Version 52.8 (3); SEMCAD X Version 14.6.5 (6469)

**Configuration/Ch20175/Area Scan (51x111x1):** Measurement grid: dx=15mm, dy=15mm  
 Maximum value of SAR (interpolated) = 1.02 mW/g

**Configuration/Ch20175/Zoom Scan (5x5x7)/Cube 0:** Measurement grid: dx=8mm, dy=8mm, dz=5mm  
 Reference Value = 26.786 V/m; Power Drift = 0.05 dB  
 Peak SAR (extrapolated) = 1.118 mW/g  
**SAR(1 g) = 0.835 mW/g; SAR(10 g) = 0.524 mW/g**  
 Maximum value of SAR (measured) = 0.917 mW/g



0 dB = 0.917 mW/g = -0.75 dB mW/g

Test Laboratory: Sporton International Inc. SAR/HAC Testing Lab

Date: 2013/3/12

**#25\_WLAN2.4G\_802.11n-HT40\_Bottom Face\_0cm\_Ch6;Ant A**

**DUT: 330705**

Communication System: 802.11n; Frequency: 2437 MHz; Duty Cycle: 1:1  
 Medium: MSL\_2450\_130312 Medium parameters used:  $f = 2437$  MHz;  $\sigma = 1.887$  mho/m;  $\epsilon_r = 51.868$ ;  $\rho = 1000$  kg/m<sup>3</sup>  
 Ambient Temperature : 22.4 °C; Liquid Temperature : 21.4 °C

DASY5 Configuration:

- Probe: ES3DV3 - SN3270; ConvF(4.17, 4.17, 4.17); Calibrated: 2012/9/28;
- Sensor-Surface: 3mm (Mechanical Surface Detection)
- Electronics: DAE4 Sn778; Calibrated: 2012/8/27
- Phantom: ELI 4.0\_Front; Type: QDOVA001BB; Serial: 1026
- Measurement SW: DASY52, Version 52.8 (2); SEMCAD X Version 14.6.6 (6477)

**Configuration/Ch6/Area Scan (71x131x1):** Measurement grid: dx=12mm, dy=12mm  
 Maximum value of SAR (interpolated) = 0.263 mW/g

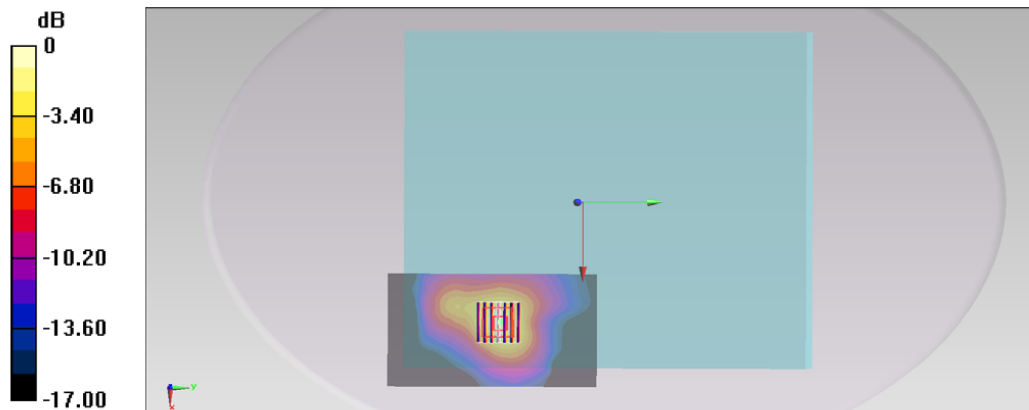
**Configuration/Ch6/Zoom Scan (7x7x7)/Cube 0:** Measurement grid: dx=5mm, dy=5mm, dz=5mm

Reference Value = 12.087 V/m; Power Drift = 0.03 dB

Peak SAR (extrapolated) = 0.418 mW/g

**SAR(1 g) = 0.208 mW/g; SAR(10 g) = 0.106 mW/g**

Maximum value of SAR (measured) = 0.261 mW/g



Test Laboratory: Sporton International Inc. SAR/HAC Testing Lab

Date: 2013/3/14

**#42\_WLAN5G\_802.11a\_Bottom Face\_0cm\_Ch157;Ant A**

**DUT: 330705**

Communication System: 802.11a; Frequency: 5785 MHz; Duty Cycle: 1:1  
 Medium: MSL\_5G\_130314 Medium parameters used:  $f = 5785$  MHz;  $\sigma = 6.165$  mho/m;  $\epsilon_r = 46.498$ ;  $\rho = 1000$  kg/m<sup>3</sup>  
 Ambient Temperature : 22.5°C; Liquid Temperature : 21.5°C

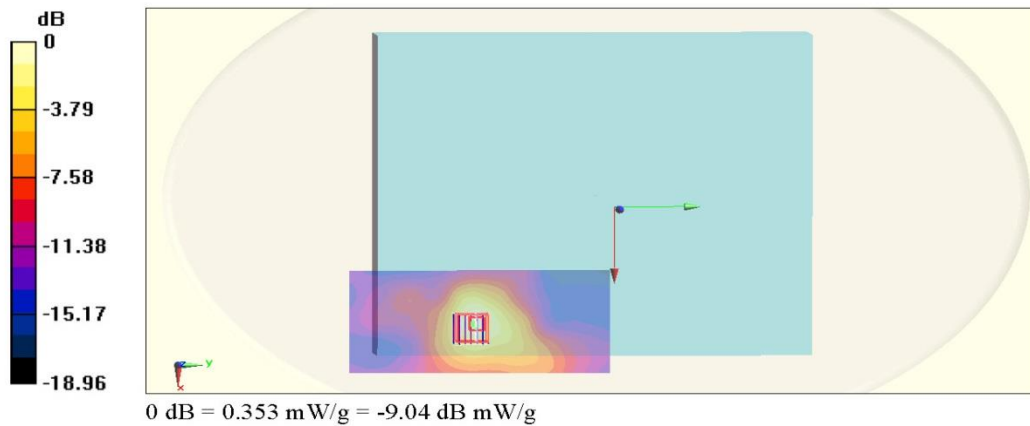
**DASY5 Configuration:**

- Probe: EX3DV4 - SN3792; ConvF(3.89, 3.89, 3.89); Calibrated: 2012/6/21;
- Sensor-Surface: 1.4mm (Mechanical Surface Detection)
- Electronics: DAE4 Sn1338; Calibrated: 2012/6/12
- Phantom: ELI 4.0\_Front; Type: QDOVA001BB; Serial: 1029
- Measurement SW: DASY52, Version 52.8 (3); SEMCAD X Version 14.6.5 (6469)

**Configuration/Ch157/Area Scan (81x181x1):** Measurement grid: dx=10mm, dy=10mm  
 Maximum value of SAR (interpolated) = 0.340 mW/g

**Configuration/Ch157/Zoom Scan (7x7x7)/Cube 0:** Measurement grid: dx=4mm, dy=4mm, dz=1.4mm

Reference Value = 9.001 V/m; Power Drift = -0.01 dB  
 Peak SAR (extrapolated) = 0.573 mW/g  
**SAR(1 g) = 0.165 mW/g; SAR(10 g) = 0.073 mW/g**  
 Maximum value of SAR (measured) = 0.353 mW/g



**12.4 Simultaneous Multi-band Transmission Analysis**

No.	Applicable Simultaneous Transmission Combination
1.	<b>GSM/WCDMA/LTE(Data) + Bluetooth</b>
2.	<b>GSM/WCDMA/LTE(Data) + WLAN2.4G Hotspot</b>
3.	<b>GSM/WCDMA/LTE(Data) + WLAN2.4G Hotspot + Bluetooth</b>

**Note:**

1. By design, WLAN 5GHz frequency band does not support hotspot operation
2. EUT will choose either WLAN 2.4GHz or WLAN 5GHz according to the network signal condition; therefore, they will not transmit simultaneously.
3. WLAN/Bluetooth module is also integrated into this host. Additional WLAN SAR testing was performed for simultaneous transmission analysis and WLAN/Bluetooth power is referred to Sprotn FCC SAR Report (FCC ID: Q2GI6205-XPL, Report No: FA330725-01).
4. The Scaled SAR summation is calculated based on the same configuration and test position.
5. Per KDB 447498 D01v05, simultaneous transmission SAR is compliant if,
  - i) Scalar SAR summation < 1.6W/kg.
  - ii)  $SPLSR = (SAR_1 + SAR_2)^{1.5} / (min. \text{ separation distance, mm})$ , and the peak separation distance is determined from the square root of  $[(x_1-x_2)^2 + (y_1-y_2)^2 + (z_1-z_2)^2]$ , where  $(x_1, y_1, z_1)$  and  $(x_2, y_2, z_2)$  are the coordinates of the extrapolated peak SAR locations in the zoom scan  
If  $SPLSR \leq 0.04$ , simultaneously transmission SAR measurement is not necessary
  - iii) Simultaneously transmission SAR measurement, and the reported multi-band SAR < 1.6W/kg
6. For simultaneous transmission analysis, Bluetooth SAR is estimated per KDB 447498 D01v05 based on the formula below.
  - i)  $(max. \text{ power of channel, including tune-up tolerance, mW}) / (min. \text{ test separation distance, mm}) \cdot [\sqrt{f(\text{GHz})} / x] \text{ W/kg}$  for test separation distances  $\leq 50 \text{ mm}$ ; where  $x = 7.5$  for 1-g SAR, and  $x = 18.75$  for 10-g SAR.
  - ii) 0.4 W/kg for 1-g SAR and 1.0 W/kg for 10-g SAR, when the test separation distances is > 50 mm.

In this report, 50mm separation is applied to conservatively estimate SAR value for separation distance > 50mm

Max Power	Exposure Position	Bottom Face	Edge 1	Edge 4
	Test separation	0 mm	0 mm	0 mm
5 dBm	Antenna to user distance	5 mm	197 mm	9 mm
	Estimated SAR (W/kg)	0.133 W/kg	0.013 W/kg	0.074 W/kg





**12.5 Co-location Transmission Analysis**

**<WWAN + WLAN 2.4GHz Antenna A + Bluetooth>**

Position	WWAN-PCB			WLAN-DTS		Bluetooth-DSS	WWAN + WLAN + Bluetooth	SPLSR	Case No
	WWAN Band	Plot No	SAR (W/kg)	Plot No	SAR (W/kg)	Estimated SAR (W/kg)			
Bottom Face At 0cm	GSM850	78	0.318	25	0.211	0.133	<b>0.66</b>		
	GSM1900	89	0.145	25	0.211	0.133	<b>0.49</b>		
	WCDMA V	84	0.179	25	0.211	0.133	<b>0.52</b>		
	WCDNA II	94	0.14	25	0.211	0.133	<b>0.48</b>		
	LTE Band17	109	0.313	25	0.211	0.133	<b>0.66</b>		
	LTE Band4	99	0.234	25	0.211	0.133	<b>0.58</b>		
Edge1 At 0cm	GSM850	81	1.22	21	0.035	0.013	<b>1.27</b>		
	GSM1900	90	0.495	21	0.035	0.013	<b>0.54</b>		
	WCDMA V	85	0.536	21	0.035	0.013	<b>0.58</b>		
	WCDNA II	95	0.433	21	0.035	0.013	<b>0.48</b>		
	LTE Band17	111	0.415	21	0.035	0.013	<b>0.46</b>		
	LTE Band4	103	0.99	21	0.035	0.013	<b>1.04</b>		
Edge4 At 0cm	GSM850	83	0.103			0.074	<b>0.18</b>		
	GSM1900	91	0.03			0.074	<b>0.10</b>		
	WCDMA V	86	0.057			0.074	<b>0.13</b>		
	WCDNA II	96	0.027			0.074	<b>0.10</b>		
	LTE Band17	113	0.125			0.074	<b>0.20</b>		
	LTE Band4	106	0.091			0.074	<b>0.17</b>		

**<WWAN + WLAN 2.4GHz Antenna B + Bluetooth>**

Position	WWAN-PCB			WLAN-DTS		Bluetooth-DSS	WWAN + WLAN + Bluetooth	SPLSR	Case No
	WWAN Band	Plot No	SAR (W/kg)	Plot No	SAR (W/kg)	Estimated SAR (W/kg)			
Bottom Face At 0cm	GSM850	78	0.318	28	0.024	0.133	<b>0.48</b>		
	GSM1900	89	0.145	28	0.024	0.133	<b>0.30</b>		
	WCDMA V	84	0.179	28	0.024	0.133	<b>0.34</b>		
	WCDNA II	94	0.14	28	0.024	0.133	<b>0.30</b>		
	LTE Band17	109	0.313	28	0.024	0.133	<b>0.47</b>		
	LTE Band4	99	0.234	28	0.024	0.133	<b>0.39</b>		
Edge1 At 0cm	GSM850	81	1.22	31	0.16	0.013	<b>1.39</b>		
	GSM1900	90	0.495	31	0.16	0.013	<b>0.67</b>		
	WCDMA V	85	0.536	31	0.16	0.013	<b>0.71</b>		
	WCDNA II	95	0.433	31	0.16	0.013	<b>0.61</b>		
	LTE Band17	111	0.415	31	0.16	0.013	<b>0.59</b>		
	LTE Band4	103	0.99	31	0.16	0.013	<b>1.16</b>		
Edge4 At 0cm	GSM850	83	0.103			0.074	<b>0.18</b>		
	GSM1900	91	0.03			0.074	<b>0.10</b>		
	WCDMA V	86	0.057			0.074	<b>0.13</b>		
	WCDNA II	96	0.027			0.074	<b>0.10</b>		
	LTE Band17	113	0.125			0.074	<b>0.20</b>		
	LTE Band4	106	0.091			0.074	<b>0.17</b>		



<WWAN + WLAN 2.4GHz Antenna A+B + Bluetooth>

Position	WWAN-PCB			WLAN-DTS		Bluetooth-DSS	WWAN + WLAN + Bluetooth	SPLSR	Case No
	WWAN Band	Plot No	SAR (W/kg)	Plot No	SAR (W/kg)	Estimated SAR (W/kg)			
Bottom Face At 0cm	GSM850	78	0.318	35	0.089	0.133	<b>0.54</b>		
	GSM1900	89	0.145	35	0.089	0.133	<b>0.37</b>		
	WCDMA V	84	0.179	35	0.089	0.133	<b>0.40</b>		
	WCDNA II	94	0.14	35	0.089	0.133	<b>0.36</b>		
	LTE Band17	109	0.313	35	0.089	0.133	<b>0.54</b>		
	LTE Band4	99	0.234	35	0.089	0.133	<b>0.46</b>		
Edge1 At 0cm	GSM850	81	1.22	36	0.082	0.013	<b>1.32</b>		
	GSM1900	90	0.495	36	0.082	0.013	<b>0.59</b>		
	WCDMA V	85	0.536	36	0.082	0.013	<b>0.63</b>		
	WCDNA II	95	0.433	36	0.082	0.013	<b>0.53</b>		
	LTE Band17	111	0.415	36	0.082	0.013	<b>0.51</b>		
	LTE Band4	103	0.99	36	0.082	0.013	<b>1.09</b>		
Edge4 At 0cm	GSM850	83	0.103			0.074	<b>0.18</b>		
	GSM1900	91	0.03			0.074	<b>0.10</b>		
	WCDMA V	86	0.057			0.074	<b>0.13</b>		
	WCDNA II	96	0.027			0.074	<b>0.10</b>		
	LTE Band17	113	0.125			0.074	<b>0.20</b>		
	LTE Band4	106	0.091			0.074	<b>0.17</b>		

Test Engineer : Anglo Chang and San Lin

### **13. Uncertainty Assessment**

The component of uncertainty may generally be categorized according to the methods used to evaluate them. The evaluation of uncertainty by the statistical analysis of a series of observations is termed a Type A evaluation of uncertainty. The evaluation of uncertainty by means other than the statistical analysis of a series of observations is termed a Type B evaluation of uncertainty. Each component of uncertainty, however evaluated, is represented by an estimated standard deviation, termed standard uncertainty, which is determined by the positive square root of the estimated variance.

A Type A evaluation of standard uncertainty may be based on any valid statistical method for treating data. This includes calculating the standard deviation of the mean of a series of independent observations; using the method of least squares to fit a curve to the data in order to estimate the parameter of the curve and their standard deviations; or carrying out an analysis of variance in order to identify and quantify random effects in certain kinds of measurement.

A type B evaluation of standard uncertainty is typically based on scientific judgment using all of the relevant information available. These may include previous measurement data, experience, and knowledge of the behavior and properties of relevant materials and instruments, manufacture’s specification, data provided in calibration reports and uncertainties assigned to reference data taken from handbooks. Broadly speaking, the uncertainty is either obtained from an outdoor source or obtained from an assumed distribution, such as the normal distribution, rectangular or triangular distributions indicated in Table 12.1

<b>Uncertainty Distributions</b>	<b>Normal</b>	<b>Rectangular</b>	<b>Triangular</b>	<b>U-Shape</b>
Multi-plying Factor <sup>(a)</sup>	1/k <sup>(b)</sup>	1/√3	1/√6	1/√2

(a) standard uncertainty is determined as the product of the multiplying factor and the estimated range of variations in the measured quantity

(b)  $\kappa$  is the coverage factor

**Table 13.1 Standard Uncertainty for Assumed Distribution**

The combined standard uncertainty of the measurement result represents the estimated standard deviation of the result. It is obtained by combining the individual standard uncertainties of both Type A and Type B evaluation using the usual “root-sum-squares” (RSS) methods of combining standard deviations by taking the positive square root of the estimated variances.

Expanded uncertainty is a measure of uncertainty that defines an interval about the measurement result within which the measured value is confidently believed to lie. It is obtained by multiplying the combined standard uncertainty by a coverage factor. Typically, the coverage factor ranges from 2 to 3. Using a coverage factor allows the true value of a measured quantity to be specified with a defined probability within the specified uncertainty range. For purpose of this document, a coverage factor two is used, which corresponds to confidence interval of about 95 %. The DASY uncertainty Budget is shown in the following tables.



Error Description	Uncertainty Value (±%)	Probability Distribution	Divisor	Ci (1g)	Ci (10g)	Standard Uncertainty (1g)	Standard Uncertainty (10g)
<b>Measurement System</b>							
Probe Calibration	6.0	Normal	1	1	1	± 6.0 %	± 6.0 %
Axial Isotropy	4.7	Rectangular	√3	0.7	0.7	± 1.9 %	± 1.9 %
Hemispherical Isotropy	9.6	Rectangular	√3	0.7	0.7	± 3.9 %	± 3.9 %
Boundary Effects	1.0	Rectangular	√3	1	1	± 0.6 %	± 0.6 %
Linearity	4.7	Rectangular	√3	1	1	± 2.7 %	± 2.7 %
System Detection Limits	1.0	Rectangular	√3	1	1	± 0.6 %	± 0.6 %
Readout Electronics	0.3	Normal	1	1	1	± 0.3 %	± 0.3 %
Response Time	0.8	Rectangular	√3	1	1	± 0.5 %	± 0.5 %
Integration Time	2.6	Rectangular	√3	1	1	± 1.5 %	± 1.5 %
RF Ambient Noise	3.0	Rectangular	√3	1	1	± 1.7 %	± 1.7 %
RF Ambient Reflections	3.0	Rectangular	√3	1	1	± 1.7 %	± 1.7 %
Probe Positioner	0.4	Rectangular	√3	1	1	± 0.2 %	± 0.2 %
Probe Positioning	2.9	Rectangular	√3	1	1	± 1.7 %	± 1.7 %
Max. SAR Eval.	1.0	Rectangular	√3	1	1	± 0.6 %	± 0.6 %
<b>Test Sample Related</b>							
Device Positioning	2.9	Normal	1	1	1	± 2.9 %	± 2.9 %
Device Holder	3.6	Normal	1	1	1	± 3.6 %	± 3.6 %
Power Drift	5.0	Rectangular	√3	1	1	± 2.9 %	± 2.9 %
<b>Phantom and Setup</b>							
Phantom Uncertainty	4.0	Rectangular	√3	1	1	± 2.3 %	± 2.3 %
Liquid Conductivity (Target)	5.0	Rectangular	√3	0.64	0.43	± 1.8 %	± 1.2 %
Liquid Conductivity (Meas.)	2.5	Normal	1	0.64	0.43	± 1.6 %	± 1.1 %
Liquid Permittivity (Target)	5.0	Rectangular	√3	0.6	0.49	± 1.7 %	± 1.4 %
Liquid Permittivity (Meas.)	2.5	Normal	1	0.6	0.49	± 1.5 %	± 1.2 %
<b>Combined Standard Uncertainty</b>						± 11.0 %	± 10.8 %
<b>Coverage Factor for 95 %</b>						K=2	
<b>Expanded Uncertainty</b>						± 22.0 %	± 21.5 %

Table 13.2 Uncertainty Budget for frequency range 300 MHz to 3 GHz according to IEEE 1528-2003



Error Description	Uncertainty Value (±%)	Probability Distribution	Divisor	Ci (1g)	Ci (10g)	Standard Uncertainty (1g)	Standard Uncertainty (10g)
<b>Measurement System</b>							
Probe Calibration	6.55	Normal	1	1	1	± 6.55 %	± 6.55 %
Axial Isotropy	4.7	Rectangular	√3	0.7	0.7	± 1.9 %	± 1.9 %
Hemispherical Isotropy	9.6	Rectangular	√3	0.7	0.7	± 3.9 %	± 3.9 %
Boundary Effects	2.0	Rectangular	√3	1	1	± 1.2 %	± 1.2 %
Linearity	4.7	Rectangular	√3	1	1	± 2.7 %	± 2.7 %
System Detection Limits	1.0	Rectangular	√3	1	1	± 0.6 %	± 0.6 %
Readout Electronics	0.3	Normal	1	1	1	± 0.3 %	± 0.3 %
Response Time	0.8	Rectangular	√3	1	1	± 0.5 %	± 0.5 %
Integration Time	2.6	Rectangular	√3	1	1	± 1.5 %	± 1.5 %
RF Ambient Noise	3.0	Rectangular	√3	1	1	± 1.7 %	± 1.7 %
RF Ambient Reflections	3.0	Rectangular	√3	1	1	± 1.7 %	± 1.7 %
Probe Positioner	0.8	Rectangular	√3	1	1	± 0.5 %	± 0.5 %
Probe Positioning	9.9	Rectangular	√3	1	1	± 5.7 %	± 5.7 %
Max. SAR Eval.	4.0	Rectangular	√3	1	1	± 2.3 %	± 2.3 %
<b>Test Sample Related</b>							
Device Positioning	2.9	Normal	1	1	1	± 2.9 %	± 2.9 %
Device Holder	3.6	Normal	1	1	1	± 3.6 %	± 3.6 %
Power Drift	5.0	Rectangular	√3	1	1	± 2.9 %	± 2.9 %
<b>Phantom and Setup</b>							
Phantom Uncertainty	4.0	Rectangular	√3	1	1	± 2.3 %	± 2.3 %
Liquid Conductivity (Target)	5.0	Rectangular	√3	0.64	0.43	± 1.8 %	± 1.2 %
Liquid Conductivity (Meas.)	2.5	Normal	1	0.64	0.43	± 1.6 %	± 1.1 %
Liquid Permittivity (Target)	5.0	Rectangular	√3	0.6	0.49	± 1.7 %	± 1.4 %
Liquid Permittivity (Meas.)	2.5	Normal	1	0.6	0.49	± 1.5 %	± 1.2 %
<b>Combined Standard Uncertainty</b>						± 12.8 %	± 12.6 %
<b>Coverage Factor for 95 %</b>						K=2	
<b>Expanded Uncertainty</b>						± 25.6 %	± 25.2 %

Table 13.3 Uncertainty Budget for frequency range 3 GHz to 6 GHz according to DASY5 user manual



## **14. References**

- [1] FCC 47 CFR Part 2 “Frequency Allocations and Radio Treaty Matters; General Rules and Regulations”
- [2] ANSI/IEEE Std. C95.1-1992, “IEEE Standard for Safety Levels with Respect to Human Exposure to Radio Frequency Electromagnetic Fields, 3 kHz to 300 GHz”, September 1992
- [3] IEEE Std. 1528-2003, “Recommended Practice for Determining the Peak Spatial-Average Specific Absorption Rate (SAR) in the Human Head from Wireless Communications Devices: Measurement Techniques”, December 2003
- [4] FCC OET Bulletin 65 (Edition 97-01) Supplement C (Edition 01-01), “Evaluating Compliance with FCC Guidelines for Human Exposure to Radiofrequency Electromagnetic Fields”, June 2001
- [5] SPEAG DASY System Handbook
- [6] FCC KDB 248227 D01 v01r02, “SAR Measurement Procedures for 802.11 a/b/g Transmitters”, May 2007
- [7] FCC KDB 447498 D01 v05, “Mobile and Portable Device RF Exposure Procedures and Equipment Authorization Policies”, October 2012
- [8] FCC KDB 941225 D03 v01, “Recommended SAR Test Reduction Procedures for GSM / GPRS / EDGE”, December 2008
- [9] FCC KDB 941225 D05 v01, “SAR Test Considerations for LTE Handsets and Data Modems”, December 15 2010
- [10] FCC KDB 941225 D01 v02, “SAR Measurement Procedures for 3G Devices – CDMA 2000 / Ev-Do / WCDMA / HSDPA / HSPA”, October 2007
- [11] FCC KDB 941225 D06 v01, “SAR Evaluation Procedures for Portable Devices with Wireless Router Capabilities”, April 2011
- [12] FCC KDB 616217 D04 v01, “SAR Evaluation Considerations for Laptop, Notebook, Netbook and Tablet Computers”, October 2012