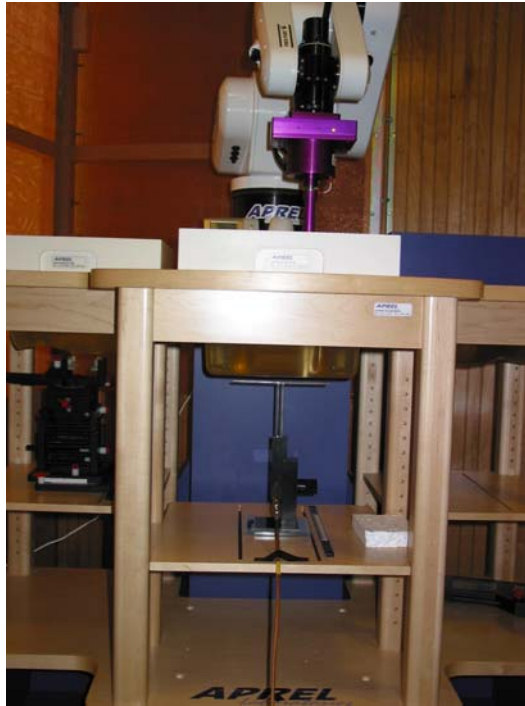
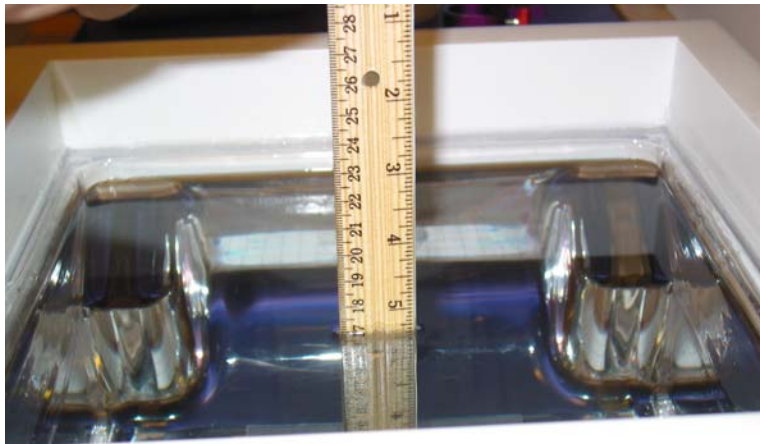


## Appendix C – SAR Test Setup Photos



**System Body Configuration**



**Body Tissue Depth**



**Top Of Unit Configuration**



**Bottom Of Unit Configuration**



**Front of Device**



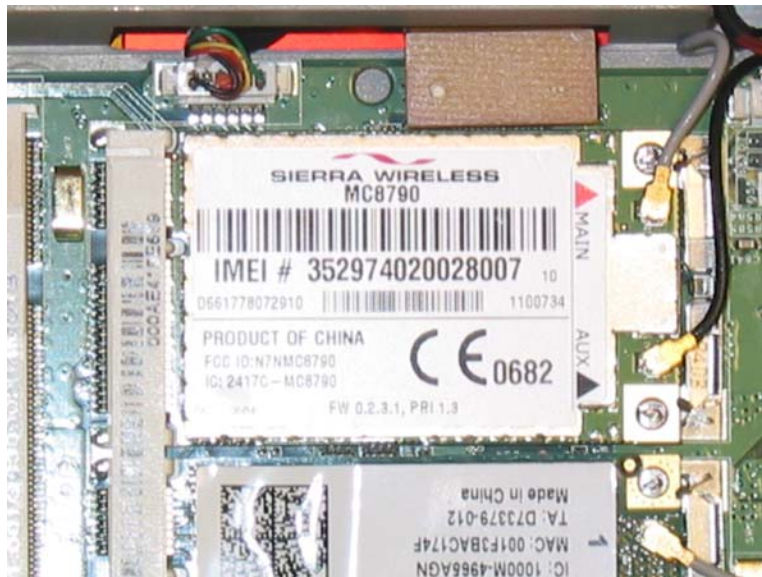
**Back of Device**



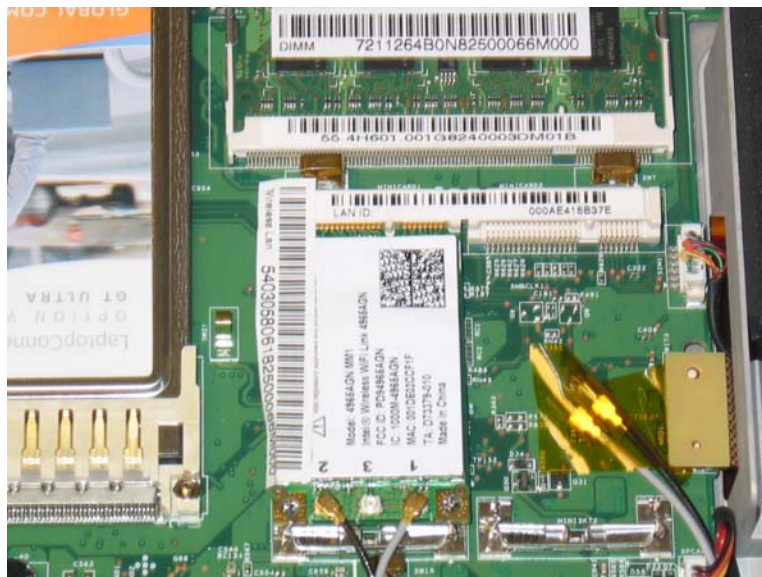
**Back of Device with Battery Removed**



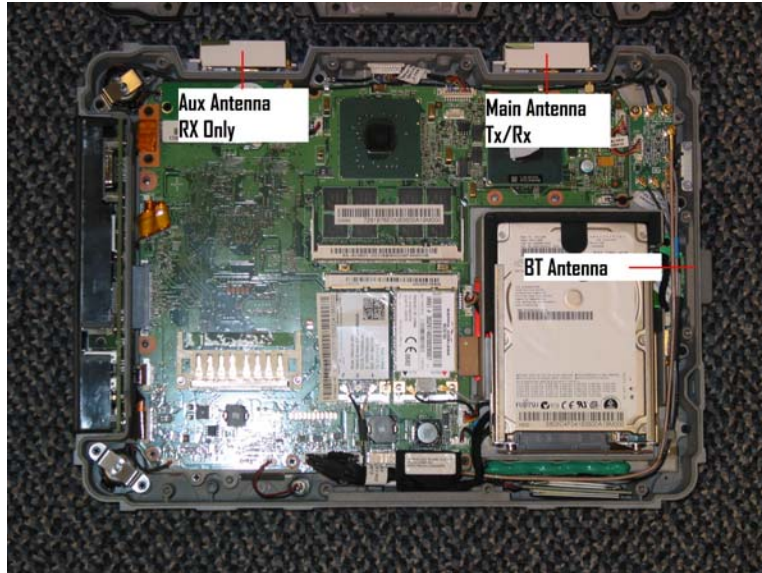
**Back of Device with Cover Removed**



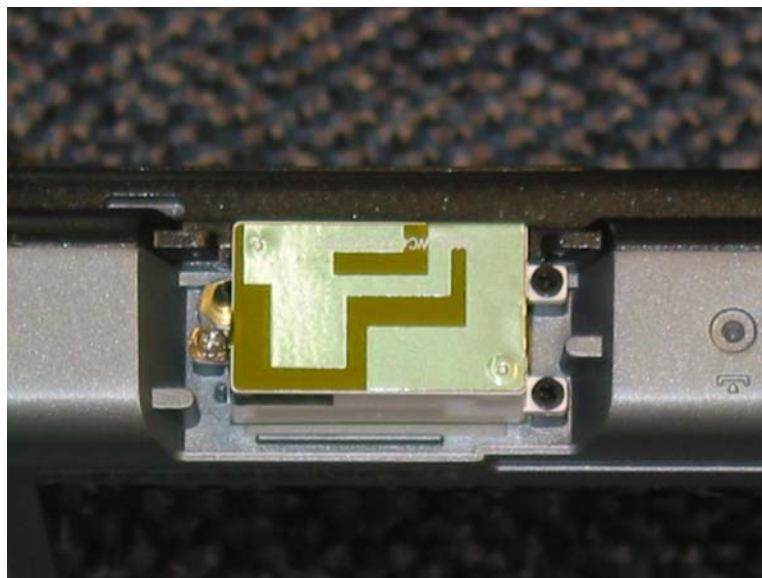
**MC8790 Module Installed**



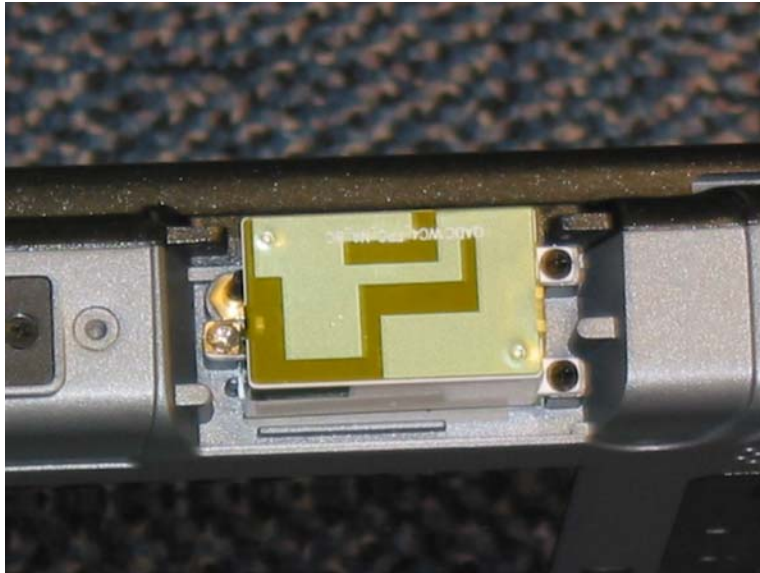
**WLAN Module Installed**



**Antenna Locations**



**Main Antenna**



**Receive Diversity Antenna**



**Back of Battery**



**Portrait Configuration of LCD**



**Landscape Configuration of LCD**



## Appendix D – Probe Calibration Data Sheets

# NCL CALIBRATION LABORATORIES

Calibration File No.: CP-840

Client.: RFEL

## CERTIFICATE OF CALIBRATION

It is certified that the equipment identified below has been calibrated in the **NCL CALIBRATION LABORATORIES** by qualified personnel following recognized procedures and using transfer standards traceable to NRC/NIST.

Equipment: Miniature Isotropic RF Probe 835 MHz

BODY Calibration

Manufacturer: APREL Laboratories

Model No.: E-020

Serial No.: 217

Calibration Procedure: SSI/DRB-TP-D01-032-E020-V2

Project No: RFEB-ALS-E-020-5318

Calibrated: 3<sup>rd</sup> December 2007

Released on: 3<sup>rd</sup> December 2007

This Calibration Certificate is Incomplete Unless Accompanied with the Calibration Results Summary  
This calibration has been conducted in line with the SCC ISO-IEC 17025 Scope of Accreditation  
Accredited Laboratory Number 48

Released By: \_\_\_\_\_

**NCL** CALIBRATION LABORATORIES

51 SPECTRUM WAY  
NEPEAN, ONTARIO  
CANADA K2R 1E6

Division of APREL Lab.  
TEL: (613) 820-4988  
FAX: (613) 820-4161

## Introduction

This Calibration Report reproduces the results of the calibration performed in line with the SSI/DRB-TP-D01-032-E020-V2 E-Field Probe Calibration Procedure. The results contained within this report are for APREL E-Field Probe E-020 217.

## References

SSI/DRB-TP-D01-032-E020-V2 E-Field Probe Calibration Procedure

IEEE 1528 "Recommended Practice for Determining the Peak Spatial-Average Specific Absorption Rate (SAR) in the Human Body Due to Wireless Communications Devices: Experimental Techniques"

SSI-TP-011 Tissue Calibration Procedure

IEC 62209 "Human exposure to radio frequency fields from hand-held and body-mounted wireless communication devices – Human models, instrumentation, and procedures –Part 1 & 2: Procedure to determine the Specific Absorption Rate (SAR) for hand-held devices used in close proximity of the ear (frequency range of 300 MHz to 3 GHz)"

IEEE 1309 Draft Standard for Calibration of Electromagnetic Field Sensors and Probes, Excluding Antennas, from 9kHz to 40GHz

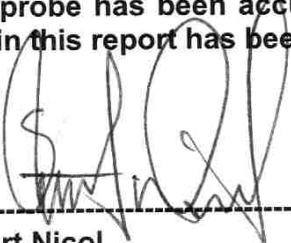
## Conditions

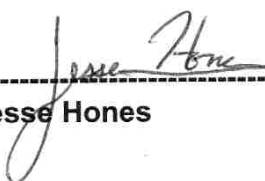
Probe 217 was a re-calibration.

**Ambient Temperature of the Laboratory:** 22 °C +/- 0.5°C

**Temperature of the Tissue:** 21 °C +/- 0.5°C

**We the undersigned attest that to the best of our knowledge the calibration of this probe has been accurately conducted and that all information contained within this report has been reviewed for accuracy.**

  
-----  
**Stuart Nicol**

  
-----  
**Jesse Hones**

## Calibration Results Summary

<b>Probe Type:</b>	E-Field Probe E-020
<b>Serial Number:</b>	217
<b>Frequency:</b>	835 MHz
<b>Sensor Offset:</b>	1.56 mm
<b>Sensor Length:</b>	2.5 mm
<b>Tip Enclosure:</b>	Ertalyte*
<b>Tip Diameter:</b>	<5 mm
<b>Tip Length:</b>	60 mm
<b>Total Length:</b>	290 mm

\*Resistive to recommended tissue recipes per IEEE-1528

## Sensitivity in Air

<b>Channel X:</b>	1.2 $\mu\text{V}/(\text{V}/\text{m})^2$
<b>Channel Y:</b>	1.2 $\mu\text{V}/(\text{V}/\text{m})^2$
<b>Channel Z:</b>	1.2 $\mu\text{V}/(\text{V}/\text{m})^2$
<b>Diode Compression Point:</b>	95 mV

## **Sensitivity in Body Tissue Measured**

**Frequency:** 835 MHz

**Epsilon:** 55.2 (+/-5%)      **Sigma:** 1.05 S/m (+/-10%)

### **ConvF**

**Channel X:** 6.1

**Channel Y:** 6.1

**Channel Z:** 6.1

Tissue sensitivity values were calculated using the load impedance of the APREL Laboratories Daq-Paq.

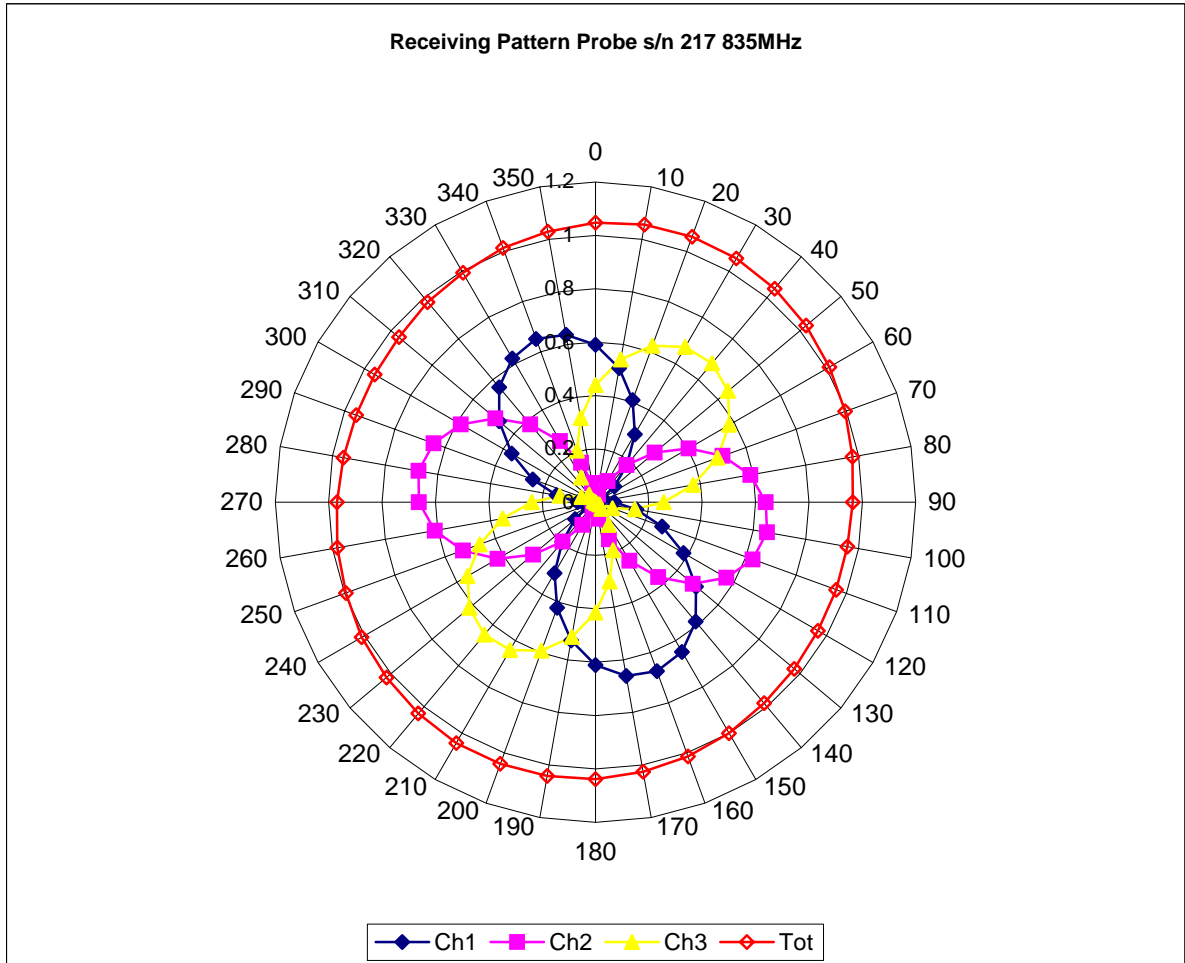
### **Boundary Effect:**

Uncertainty resulting from the boundary effect is less than 2% for the distance between the tip of the probe and the tissue boundary, when less than 2.44mm.

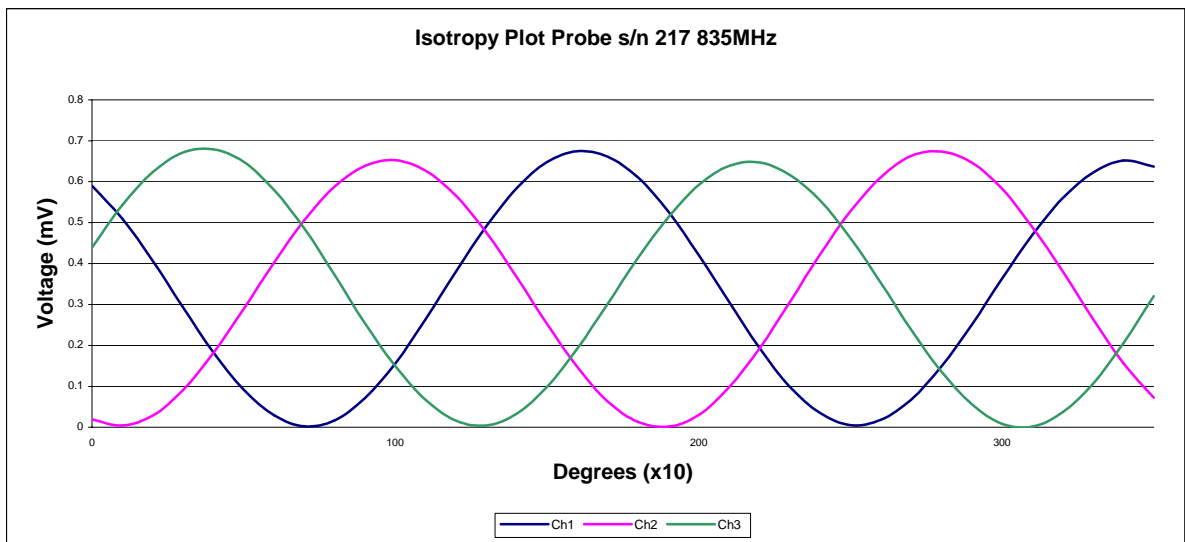
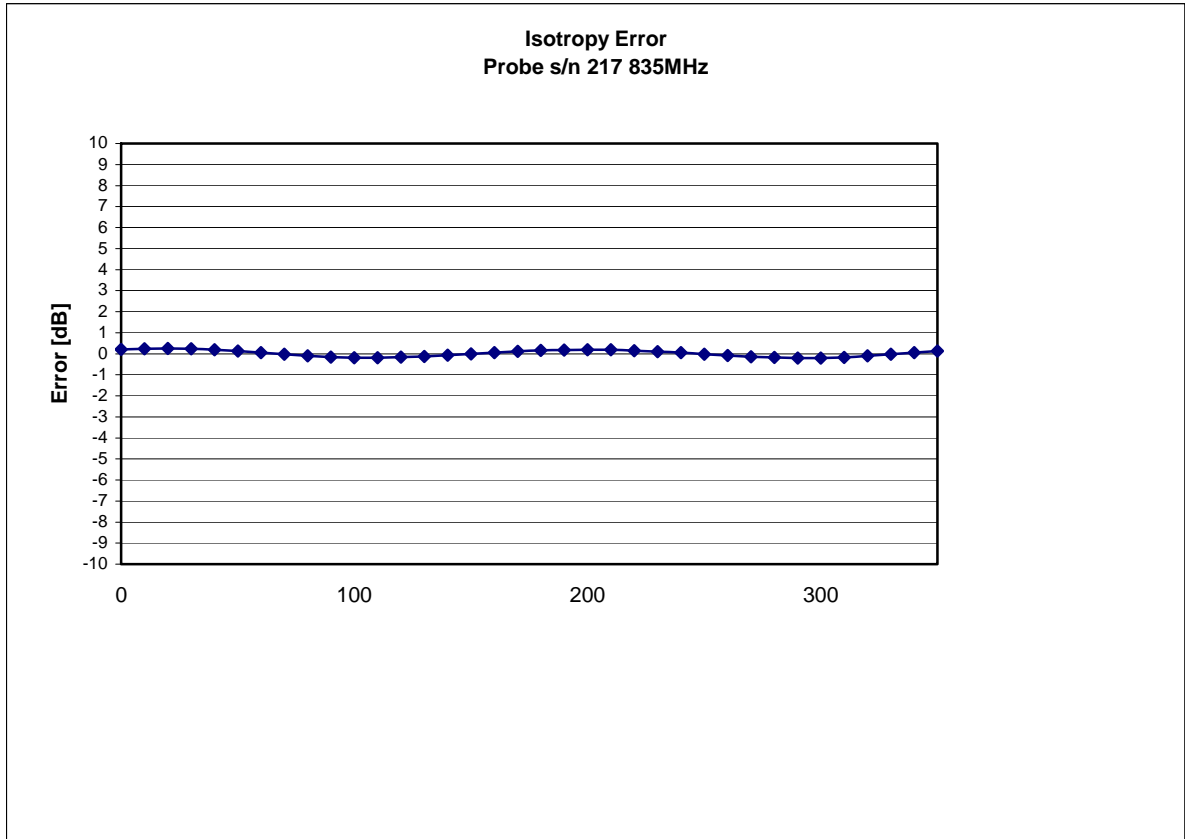
### **Spatial Resolution:**

The measured probe tip diameter is 5 mm (+/- 0.01 mm) and therefore meets the requirements of SSI/DRB-TP-D01-032 for spatial resolution.

### Receiving Pattern 835 MHz (Air)



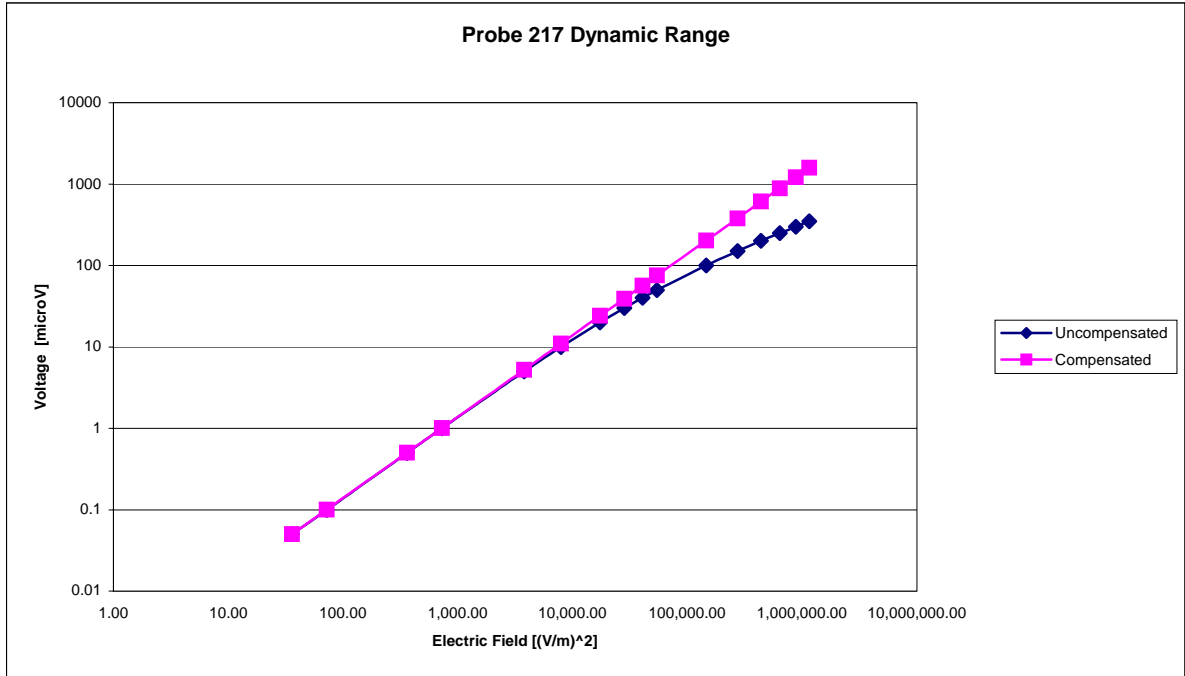
### Isotropy Error 835 MHz (Air)



Isotropicity Tissue:

0.10 dB

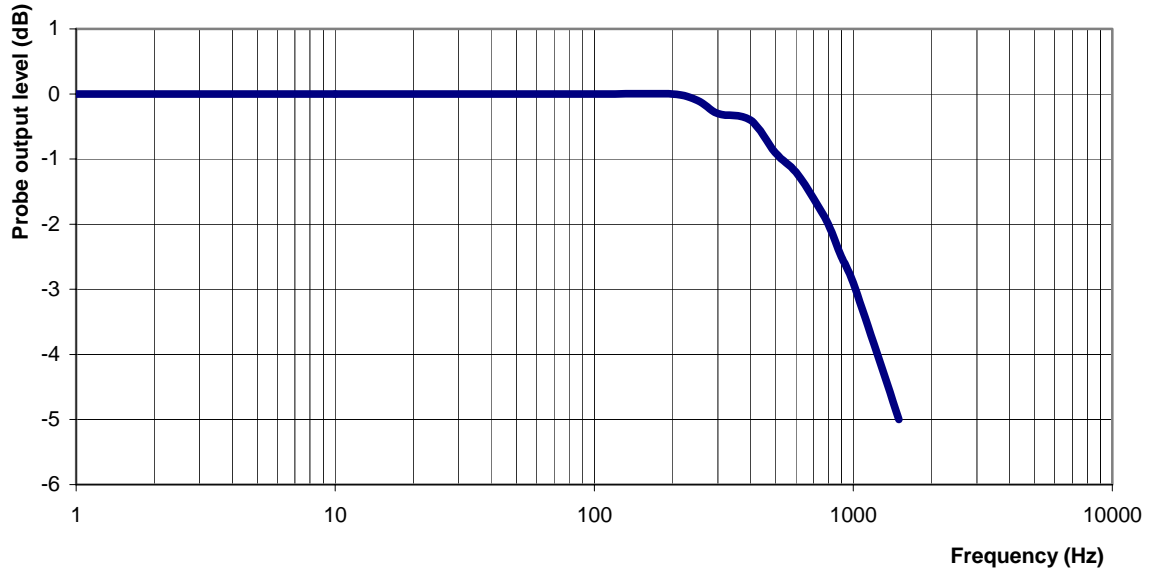
## Dynamic Range





## Video Bandwidth

**Probe Frequency Characteristics**



**Video Bandwidth at 500 Hz**                      1 dB  
**Video Bandwidth at 1.02 KHz:**                3 dB

## **Conversion Factor Uncertainty Assessment Measured**

### **Sensitivity in Body Tissue**

**Frequency:** 835 MHz  
**Epsilon:** 55.2 (+/-5%)      **Sigma:** 1.05 S/m (+/-10%)

#### **ConvF**

**Channel X:** 6.1      7%(K=2)  
**Channel Y:** 6.1      7%(K=2)  
**Channel Z:** 6.1      7%(K=2)

To minimize the uncertainty calculation all tissue sensitivity values were calculated using a load impedance of 5 MΩ.

#### **Boundary Effect:**

For a distance of 2.5mm the evaluated uncertainty (increase in the probe sensitivity) is less than 2%.

## **Test Equipment**

The test equipment used during Probe Calibration, manufacturer, model number and, current calibration status are listed and located on the main APREL server R:\NCL\Calibration Equipment\Instrument List May 2007.

# NCL CALIBRATION LABORATORIES

Calibration File No.: CP-842

Client.: RFEL

## CERTIFICATE OF CALIBRATION

It is certified that the equipment identified below has been calibrated in the  
**NCL CALIBRATION LABORATORIES** by qualified personnel following recognized  
procedures and using transfer standards traceable to NRC/NIST.

Equipment: Miniature Isotropic RF Probe 1900 MHz

BODY Calibration

Manufacturer: APREL Laboratories

Model No.: E-020

Serial No.: 217

Calibration Procedure: SSI/DRB-TP-D01-032-E020-V2

Project No: RFEB-ALS-E-020-5318

Calibrated: 3<sup>rd</sup> December 2007  
Released on: 3<sup>rd</sup> December 2007

This Calibration Certificate is Incomplete Unless Accompanied with the Calibration Results Summary  
This calibration has been conducted in line with the SCC ISO-IEC 17025 Scope of Accreditation  
Accredited Laboratory Number 48

Released By: \_\_\_\_\_

**NCL** CALIBRATION LABORATORIES

51 SPECTRUM WAY  
NEPEAN, ONTARIO  
CANADA K2R 1E6

Division of APREL Lab.  
TEL: (613) 820-4988  
FAX: (613) 820-4161

## Introduction

This Calibration Report reproduces the results of the calibration performed in line with the SSI/DRB-TP-D01-032-E020-V2 E-Field Probe Calibration Procedure. The results contained within this report are for APREL E-Field Probe E-020 217.

## References

SSI/DRB-TP-D01-032-E020-V2 E-Field Probe Calibration Procedure

IEEE 1528 "Recommended Practice for Determining the Peak Spatial-Average Specific Absorption Rate (SAR) in the Human Body Due to Wireless Communications Devices: Experimental Techniques"

SSI-TP-011 Tissue Calibration Procedure

IEC 62209 "Human exposure to radio frequency fields from hand-held and body-mounted wireless communication devices – Human models, instrumentation, and procedures –Part 1 & 2: Procedure to determine the Specific Absorption Rate (SAR) for hand-held devices used in close proximity of the ear (frequency range of 300 MHz to 3 GHz)"

IEEE 1309 Draft Standard for Calibration of Electromagnetic Field Sensors and Probes, Excluding Antennas, from 9kHz to 40GHz

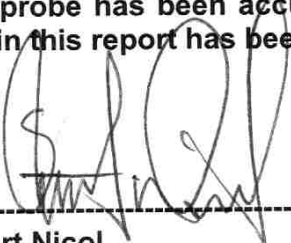
## Conditions

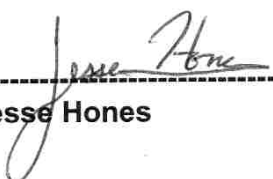
Probe 217 was a re-calibration.

**Ambient Temperature of the Laboratory:** 22 °C +/- 0.5°C

**Temperature of the Tissue:** 21 °C +/- 0.5°C

**We the undersigned attest that to the best of our knowledge the calibration of this probe has been accurately conducted and that all information contained within this report has been reviewed for accuracy.**

  
-----  
**Stuart Nicol**

  
-----  
**Jesse Hones**

## Calibration Results Summary

<b>Probe Type:</b>	E-Field Probe E-020
<b>Serial Number:</b>	217
<b>Frequency:</b>	1900 MHz
<b>Sensor Offset:</b>	1.56 mm
<b>Sensor Length:</b>	2.5 mm
<b>Tip Enclosure:</b>	Ertalyte*
<b>Tip Diameter:</b>	<5 mm
<b>Tip Length:</b>	60 mm
<b>Total Length:</b>	290 mm

\*Resistive to recommended tissue recipes per IEEE-1528

## Sensitivity in Air

<b>Channel X:</b>	1.2 $\mu\text{V}/(\text{V}/\text{m})^2$
<b>Channel Y:</b>	1.2 $\mu\text{V}/(\text{V}/\text{m})^2$
<b>Channel Z:</b>	1.2 $\mu\text{V}/(\text{V}/\text{m})^2$
<b>Diode Compression Point:</b>	95 mV

## **Sensitivity in Body Tissue Measured**

**Frequency:** 1900 MHz

**Epsilon:** 54.2 (+/-5%)      **Sigma:** 1.57 S/m (+/-5%)

### **ConvF**

**Channel X:** 4.85

**Channel Y:** 4.85

**Channel Z:** 4.85

Tissue sensitivity values were calculated using the load impedance of the APREL Laboratories Daq-Paq.

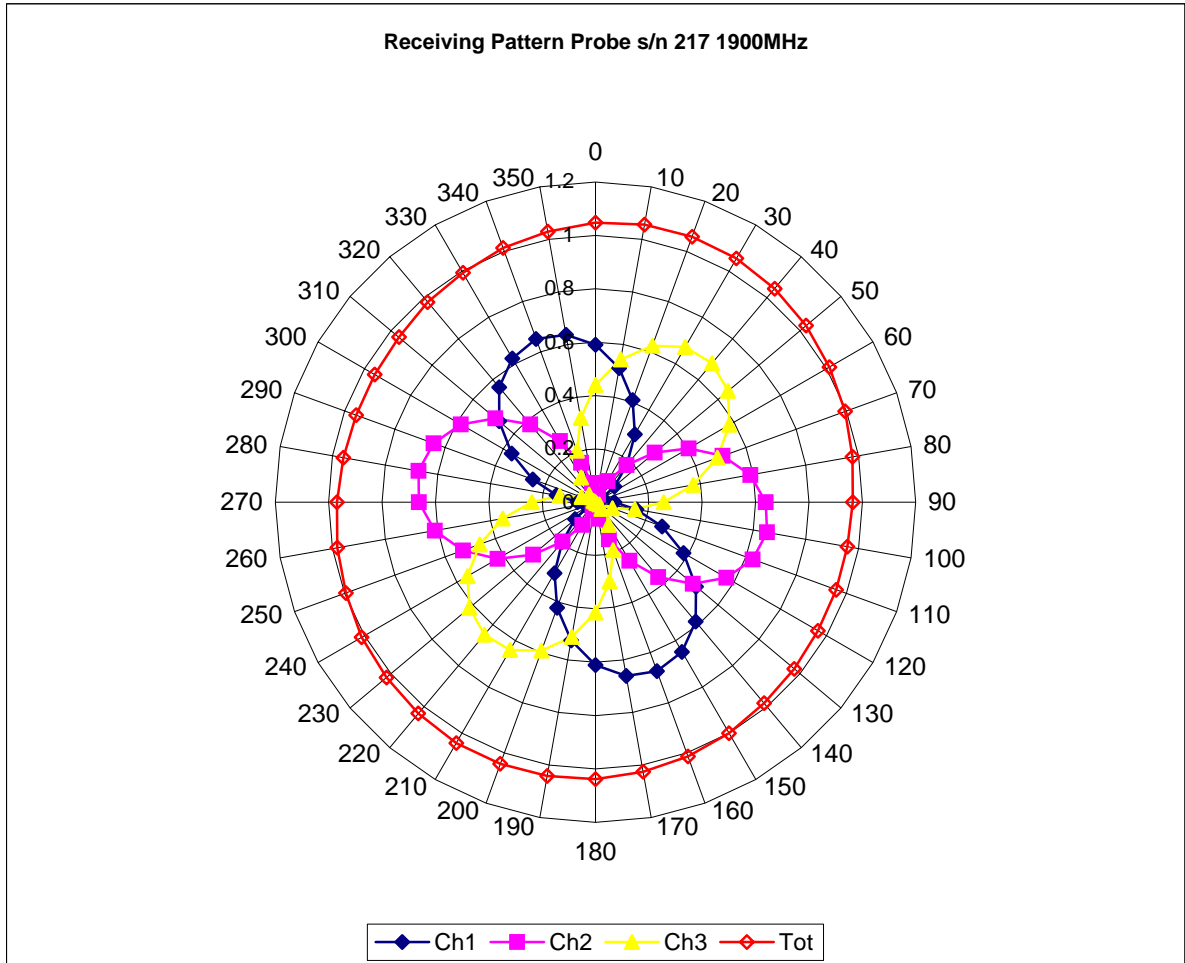
### **Boundary Effect:**

Uncertainty resulting from the boundary effect is less than 2% for the distance between the tip of the probe and the tissue boundary, when less than 2.44mm.

### **Spatial Resolution:**

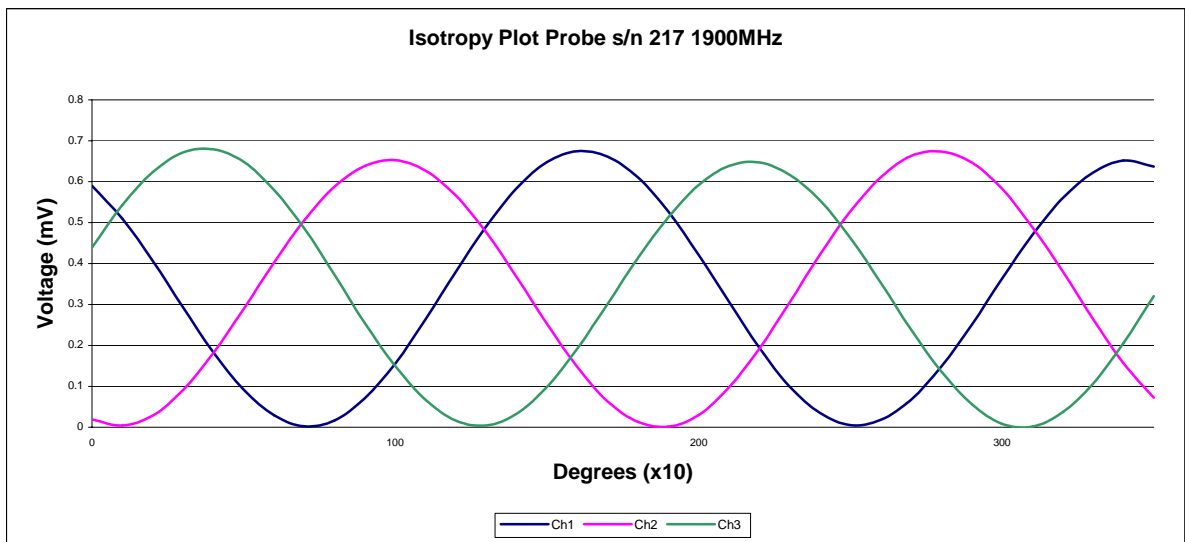
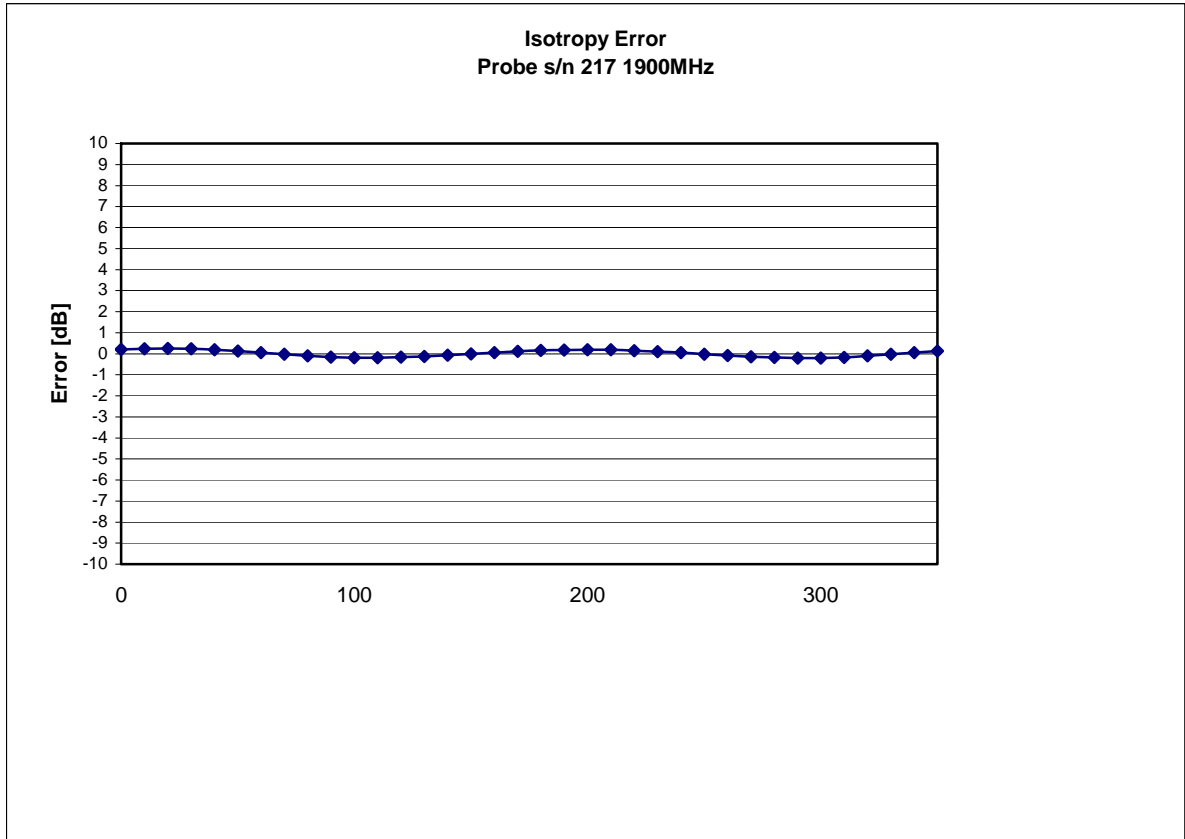
The measured probe tip diameter is 5 mm (+/- 0.01 mm) and therefore meets the requirements of SSI/DRB-TP-D01-032 for spatial resolution.

## Receiving Pattern 1900 MHz (Air)





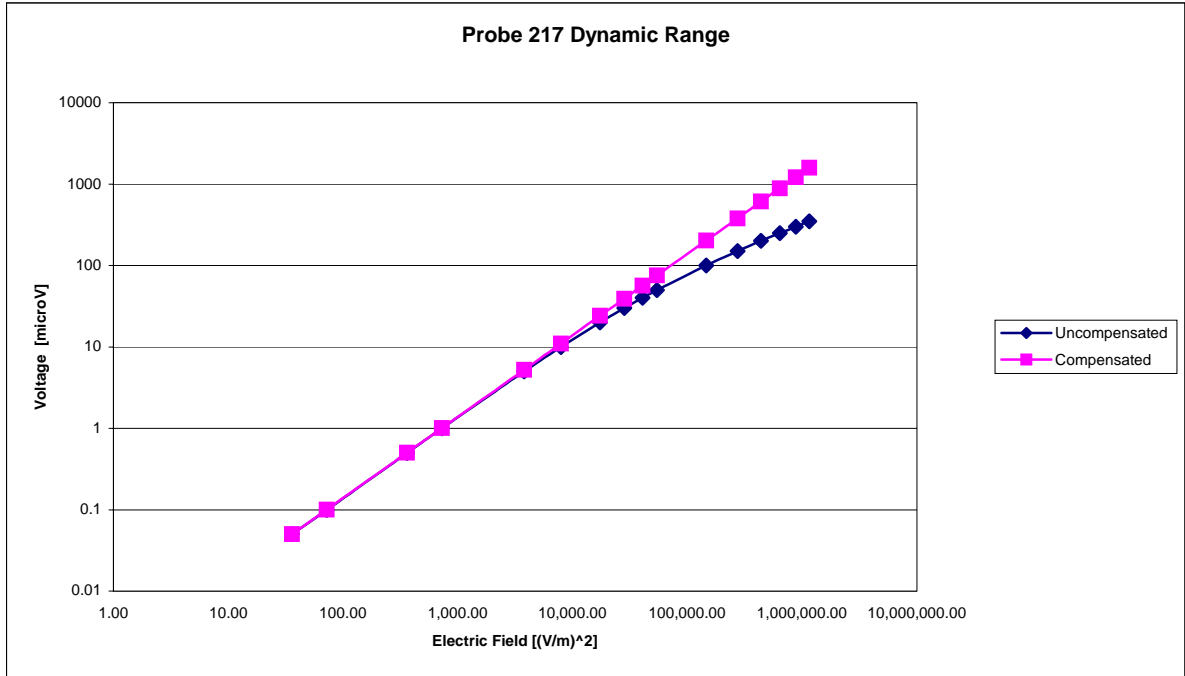
### Isotropy Error 1900 MHz (Air)



Isotropicity Tissue:

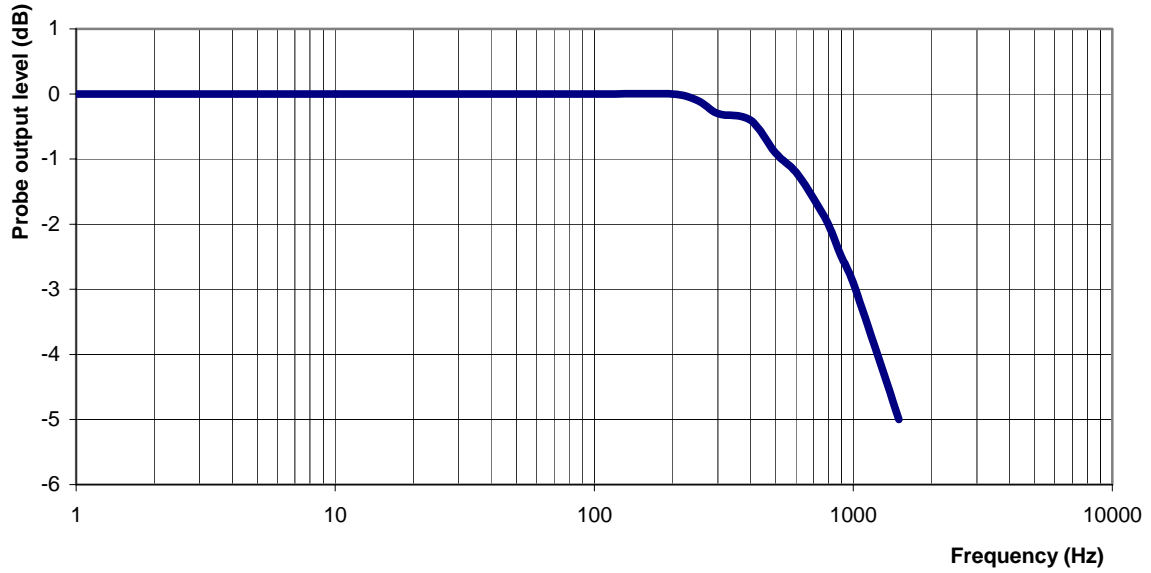
0.10 dB

## Dynamic Range



## Video Bandwidth

**Probe Frequency Characteristics**



**Video Bandwidth at 500 Hz**                      1 dB  
**Video Bandwidth at 1.02 KHz:**                3 dB

## **Conversion Factor Uncertainty Assessment Measured**

### **Sensitivity in Body Tissue**

**Frequency:** 1900 MHz

**Epsilon:** 54.2 (+/-5%)      **Sigma:** 1.57 S/m (+/-5%)

#### **ConvF**

**Channel X:** 4.85      7%(K=2)

**Channel Y:** 4.85      7%(K=2)

**Channel Z:** 4.85      7%(K=2)

To minimize the uncertainty calculation all tissue sensitivity values were calculated using a load impedance of 5 MΩ.

#### **Boundary Effect:**

For a distance of 2.5mm the evaluated uncertainty (increase in the probe sensitivity) is less than 2%.

## **Test Equipment**

The test equipment used during Probe Calibration, manufacturer, model number and, current calibration status are listed and located on the main APREL server R:\NCL\Calibration Equipment\Instrument List May 2007.

# NCL CALIBRATION LABORATORIES

Calibration File No.: CP-844

Client.: RFEL

## CERTIFICATE OF CALIBRATION

It is certified that the equipment identified below has been calibrated in the  
**NCL CALIBRATION LABORATORIES** by qualified personnel following recognized  
procedures and using transfer standards traceable to NRC/NIST.

Equipment: Miniature Isotropic RF Probe 2450 MHz

BODY Calibration

Manufacturer: APREL Laboratories

Model No.: E-020

Serial No.: 217

Calibration Procedure: SSI/DRB-TP-D01-032-E020-V2

Project No: RFEB-ALS-E-020-5318

Calibrated: 3<sup>rd</sup> December 2007

Released on: 3<sup>rd</sup> December 2007

This Calibration Certificate is Incomplete Unless Accompanied with the Calibration Results Summary  
This calibration has been conducted in line with the SCC ISO-IEC 17025 Scope of Accreditation  
Accredited Laboratory Number 48

Released By: \_\_\_\_\_

**NCL** CALIBRATION LABORATORIES

51 SPECTRUM WAY  
NEPEAN, ONTARIO  
CANADA K2R 1E6

Division of APREL Lab.  
TEL: (613) 820-4988  
FAX: (613) 820-4161

## Introduction

This Calibration Report reproduces the results of the calibration performed in line with the SSI/DRB-TP-D01-032-E020-V2 E-Field Probe Calibration Procedure. The results contained within this report are for APREL E-Field Probe E-020 217.

## References

SSI/DRB-TP-D01-032-E020-V2 E-Field Probe Calibration Procedure

IEEE 1528 "Recommended Practice for Determining the Peak Spatial-Average Specific Absorption Rate (SAR) in the Human Body Due to Wireless Communications Devices: Experimental Techniques"

SSI-TP-011 Tissue Calibration Procedure

IEC 62209 "Human exposure to radio frequency fields from hand-held and body-mounted wireless communication devices – Human models, instrumentation, and procedures –Part 1 & 2: Procedure to determine the Specific Absorption Rate (SAR) for hand-held devices used in close proximity of the ear (frequency range of 300 MHz to 3 GHz)"

IEEE 1309 Draft Standard for Calibration of Electromagnetic Field Sensors and Probes, Excluding Antennas, from 9kHz to 40GHz

## Conditions

Probe 217 was a re-calibration.

**Ambient Temperature of the Laboratory:** 22 °C +/- 0.5°C

**Temperature of the Tissue:** 21 °C +/- 0.5°C

**We the undersigned attest that to the best of our knowledge the calibration of this probe has been accurately conducted and that all information contained within this report has been reviewed for accuracy.**



---

**Stuart Nicol**



---

**Jesse Hones**

## Calibration Results Summary

<b>Probe Type:</b>	E-Field Probe E-020
<b>Serial Number:</b>	217
<b>Frequency:</b>	2450 MHz
<b>Sensor Offset:</b>	1.56 mm
<b>Sensor Length:</b>	2.5 mm
<b>Tip Enclosure:</b>	Ertalyte*
<b>Tip Diameter:</b>	<5 mm
<b>Tip Length:</b>	60 mm
<b>Total Length:</b>	290 mm

\*Resistive to recommended tissue recipes per IEEE-1528

## Sensitivity in Air

<b>Channel X:</b>	$1.2 \mu\text{V}/(\text{V}/\text{m})^2$
<b>Channel Y:</b>	$1.2 \mu\text{V}/(\text{V}/\text{m})^2$
<b>Channel Z:</b>	$1.2 \mu\text{V}/(\text{V}/\text{m})^2$
<b>Diode Compression Point:</b>	95 mV



## **Sensitivity in Body Tissue Measured**

**Frequency:** 2450 MHz

**Epsilon:** 53.8 (+/-5%)                      **Sigma:** 1.99 S/m (+/-5%)

### **ConvF**

**Channel X:** 3.61

**Channel Y:** 3.61

**Channel Z:** 3.61

Tissue sensitivity values were calculated using the load impedance of the APREL Laboratories Daq-Paq.

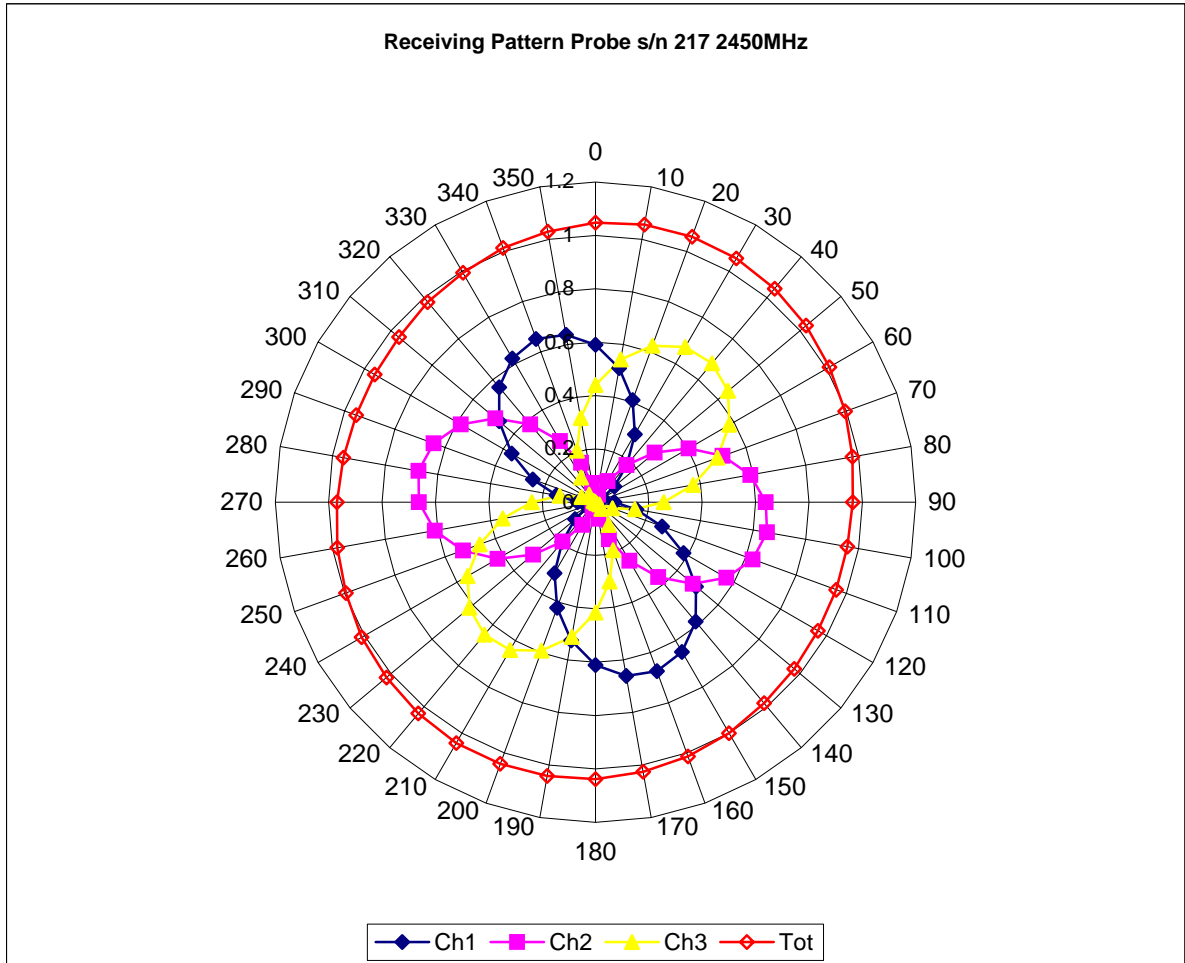
### **Boundary Effect:**

Uncertainty resulting from the boundary effect is less than 2% for the distance between the tip of the probe and the tissue boundary, when less than 2.44mm.

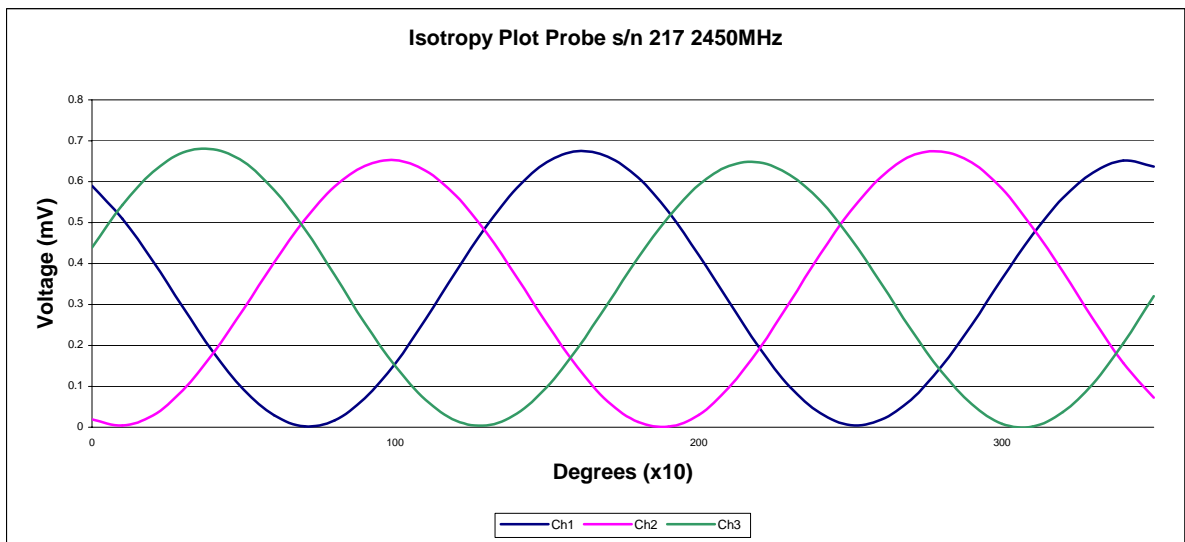
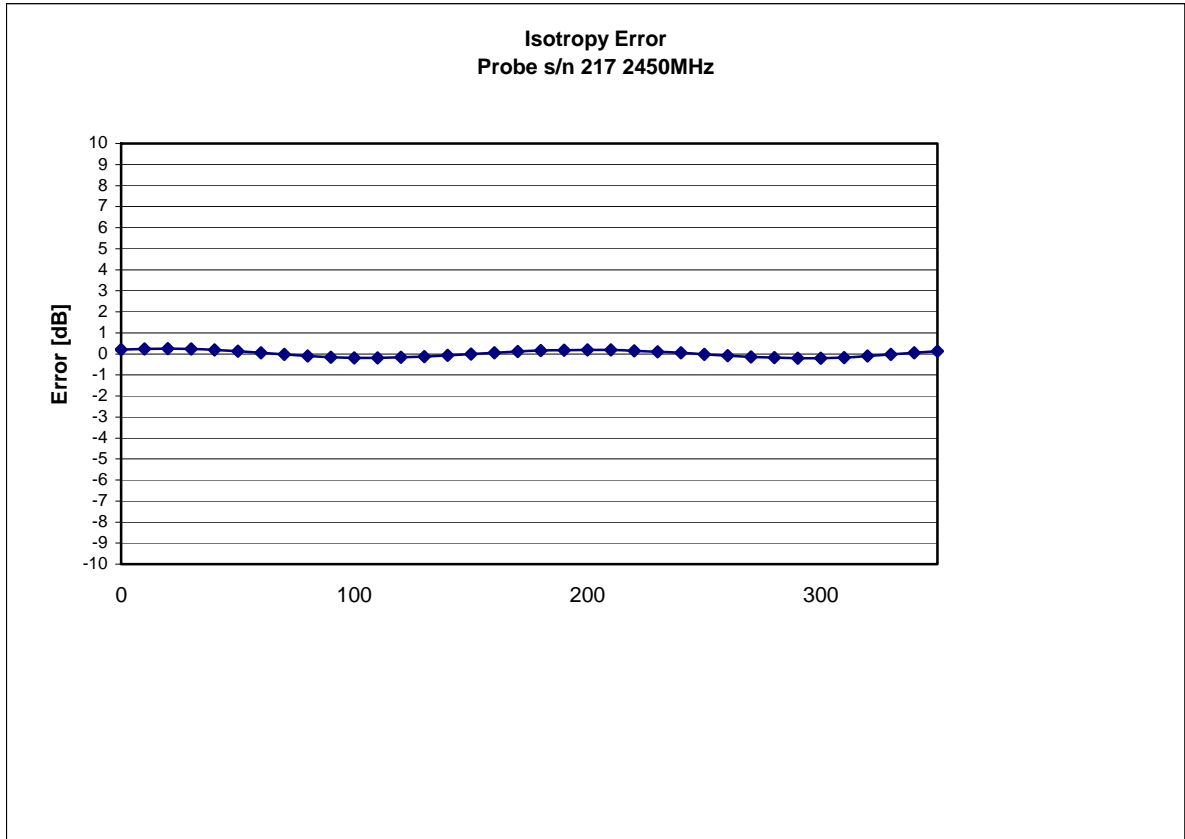
### **Spatial Resolution:**

The measured probe tip diameter is 5 mm (+/- 0.01 mm) and therefore meets the requirements of SSI/DRB-TP-D01-032 for spatial resolution.

## Receiving Pattern 2450 MHz (Air)



### Isotropy Error 2450 MHz (Air)



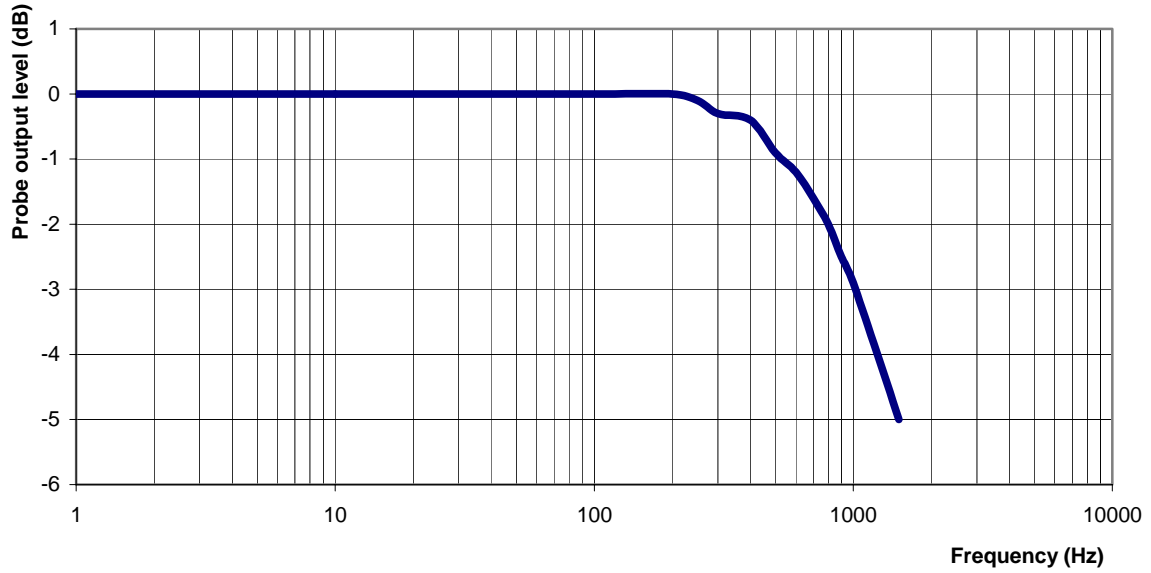
Isotropicity Tissue:

0.10 dB



## Video Bandwidth

**Probe Frequency Characteristics**



**Video Bandwidth at 500 Hz**                      1 dB  
**Video Bandwidth at 1.02 KHz:**                3 dB

## **Conversion Factor Uncertainty Assessment**

### **Sensitivity in Body Tissue**

**Frequency:** 2450 MHz

**Epsilon:** 53.8 (+/-5%)      **Sigma:** 1.99 S/m (+/-5%)

#### **ConvF**

**Channel X:** 3.61      7%(K=2)

**Channel Y:** 3.61      7%(K=2)

**Channel Z:** 3.61      7%(K=2)

To minimize the uncertainty calculation all tissue sensitivity values were calculated using a load impedance of 5 MΩ.

#### **Boundary Effect:**

For a distance of 2.5mm the evaluated uncertainty (increase in the probe sensitivity) is less than 2%.

## **Test Equipment**

The test equipment used during Probe Calibration, manufacturer, model number and, current calibration status are listed and located on the main APREL server R:\NCL\Calibration Equipment\Instrument List May 2007.

# NCL CALIBRATION LABORATORIES

Calibration File No.: CP-868

Client.: RFEL

## CERTIFICATE OF CALIBRATION

It is certified that the equipment identified below has been calibrated in the  
**NCL CALIBRATION LABORATORIES** by qualified personnel following recognized  
procedures and using transfer standards traceable to NRC/NIST.

Equipment: Miniature Isotropic RF Probe 5200 MHz

BODY Calibration

Manufacturer: APREL Laboratories

Model No.: E-020

Serial No.: E030-001

Calibration Procedure: SSI/DRB-TP-D01-032-E020-V2

Project No: RFEL-E030-5334

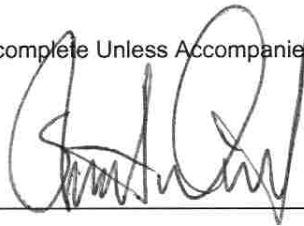
Calibrated: 14<sup>th</sup> April 2008

Released on: 14<sup>th</sup> April 2008

APREL Laboratories Certified Under Laboratory 48 of SCC

This Calibration Certificate is Incomplete Unless Accompanied with the Calibration Results Summary

Released By: \_\_\_\_\_



**NCL** CALIBRATION LABORATORIES

51 SPECTRUM WAY  
NEPEAN, ONTARIO  
CANADA K2R 1E6

Division of APREL Lab.  
TEL: (613) 820-4988  
FAX: (613) 820-4161



## Introduction

This Calibration Report reproduces the results of the calibration performed in line with the SSI/DRB-TP-D01-032-E020-V2 E-Field Probe Calibration Procedure. The results contained within this report are for APREL E-Field Probe E030-001.

## References

SSI/DRB-TP-D01-032-E020-V2 E-Field Probe Calibration Procedure

IEEE 1528 "Recommended Practice for Determining the Peak Spatial-Average Specific Absorption Rate (SAR) in the Human Body Due to Wireless Communications Devices: Experimental Techniques"

SSI-TP-011 Tissue Calibration Procedure

IEC 62209 "Human exposure to radio frequency fields from hand-held and body-mounted wireless communication devices – Human models, instrumentation, and procedures –Part 1 & 2: Procedure to determine the Specific Absorption Rate (SAR) for hand-held devices used in close proximity of the ear (frequency range of 300 MHz to 3 GHz)"

IEEE 1309 Draft Standard for Calibration of Electromagnetic Field Sensors and Probes, Excluding Antennas, from 9kHz to 40GHz


## Conditions

Probe E030-001 was a new probe.

**Ambient Temperature of the Laboratory:** 22 °C +/- 0.5°C

**Temperature of the Tissue:** 21 °C +/- 0.5°C

**We the undersigned attest that to the best of our knowledge the calibration of this probe has been accurately conducted and that all information contained within this report has been reviewed for accuracy.**

  
-----  
**Stuart Nicol**

  
-----  
**Jesse Hones**

## Calibration Results Summary

<b>Probe Type:</b>	E-Field Probe E-030
<b>Serial Number:</b>	E030-001
<b>Frequency:</b>	5200 MHz
<b>Sensor Offset:</b>	1.06 mm
<b>Sensor Length:</b>	2.5 mm
<b>Tip Enclosure:</b>	Composite*
<b>Tip Diameter:</b>	<2.5 mm
<b>Tip Length:</b>	55 mm
<b>Total Length:</b>	289 mm

\*Resistive to recommended tissue recipes per IEEE-1528

## Sensitivity in Air

<b>Channel X:</b>	1.2 $\mu\text{V}/(\text{V}/\text{m})^2$
<b>Channel Y:</b>	1.2 $\mu\text{V}/(\text{V}/\text{m})^2$
<b>Channel Z:</b>	1.2 $\mu\text{V}/(\text{V}/\text{m})^2$
<b>Diode Compression Point:</b>	95 mV

## **Sensitivity in Body Tissue Measured**

**Frequency:** 5200 MHz

**Epsilon:** 48.11                      **Sigma:** 5.51 S/m

### **ConvF:**

**Channel X:** 8.6

**Channel Y:** 8.6

**Channel Z:** 8.6

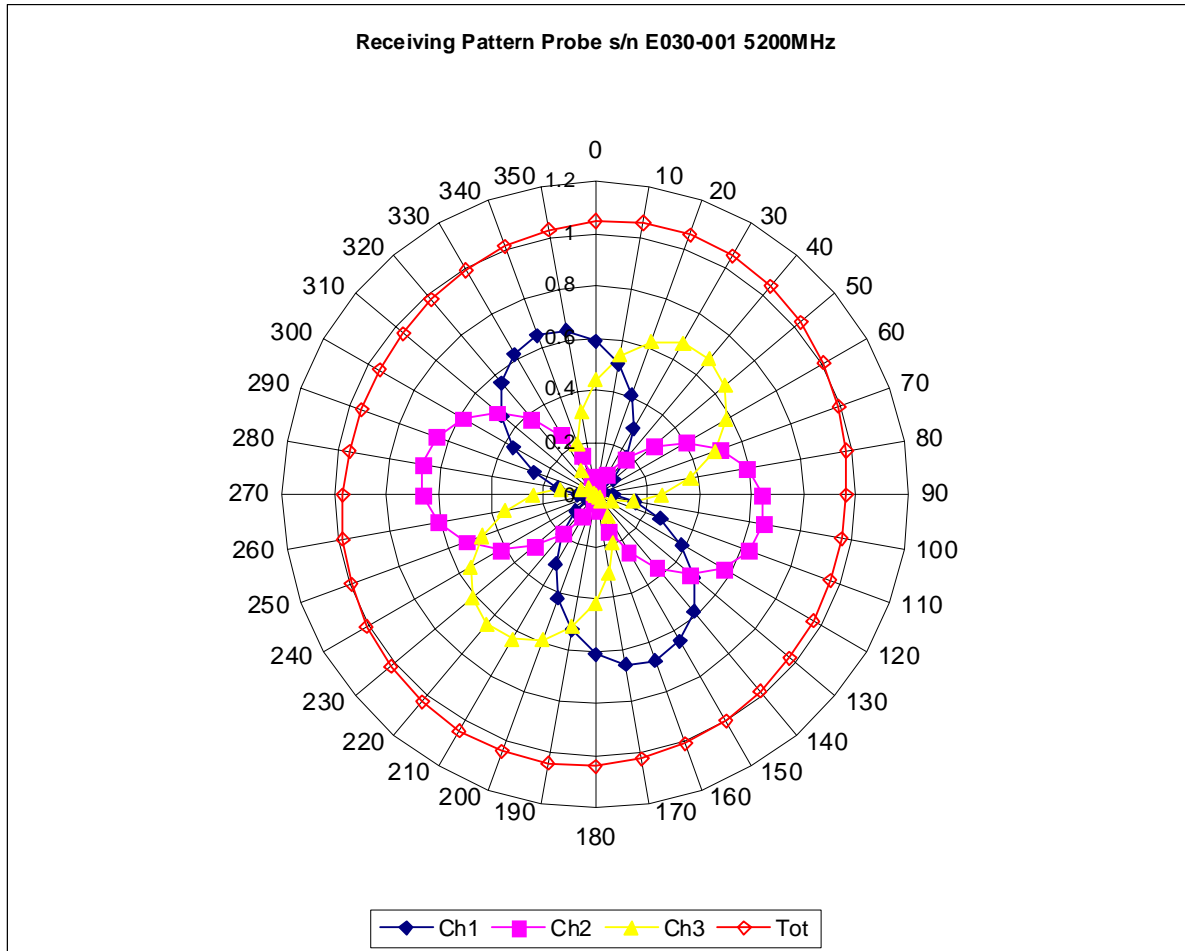
### **Boundary Effect:**

Uncertainty resulting from the boundary effect is less than 2.1% for the distance between the tip of the probe and the tissue boundary, when less than 0.58mm.

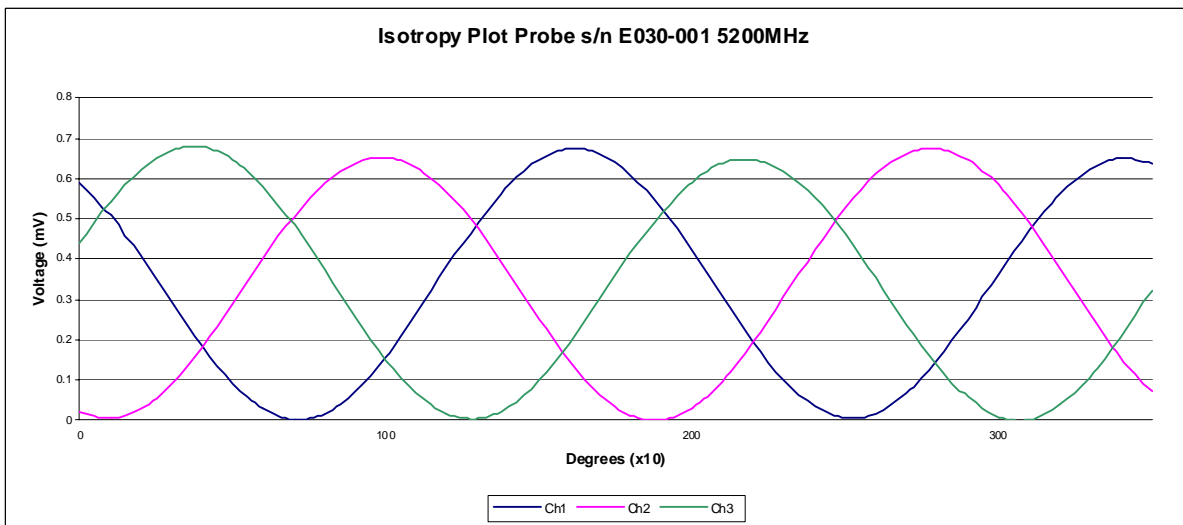
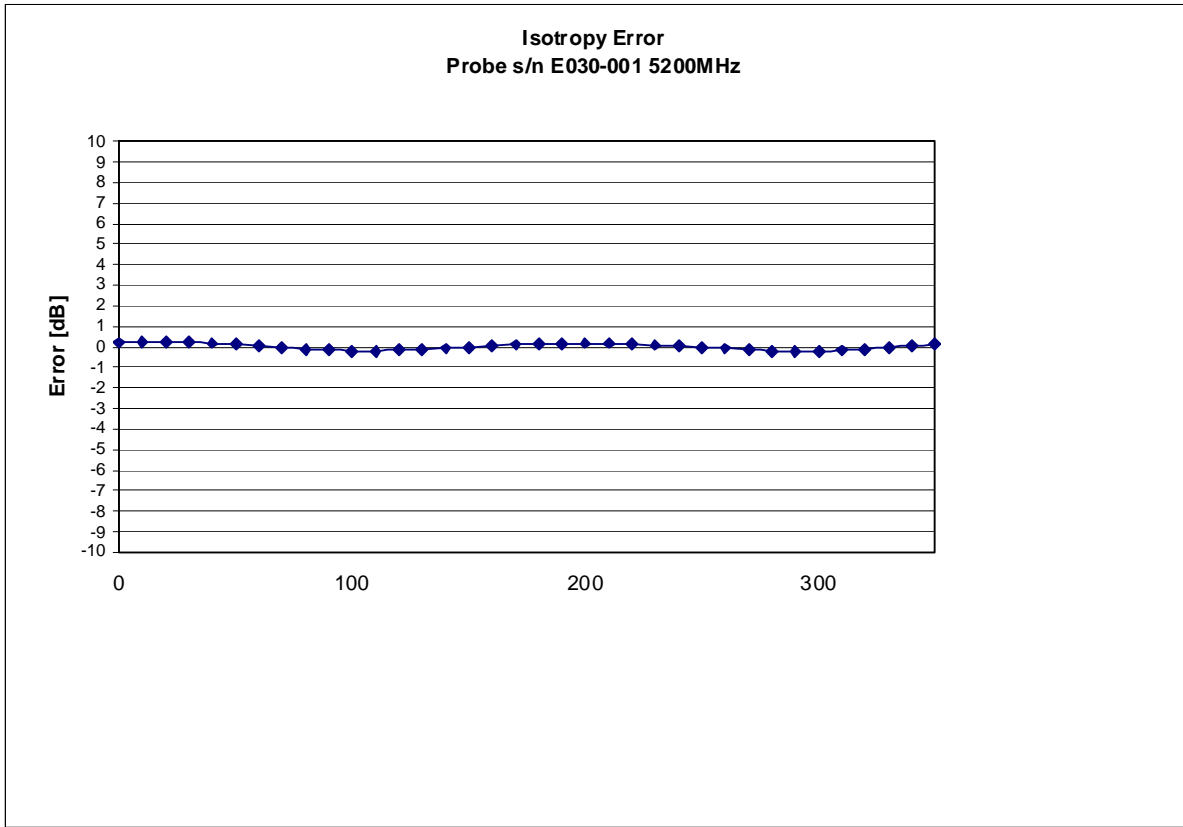
### **Spatial Resolution:**

The measured probe tip diameter is 2.5mm (+/- 0.01 mm) and therefore meets the requirements of SSI/DRB-TP-D01-032 for spatial resolution.

## Receiving Pattern 5200 MHz (Air)



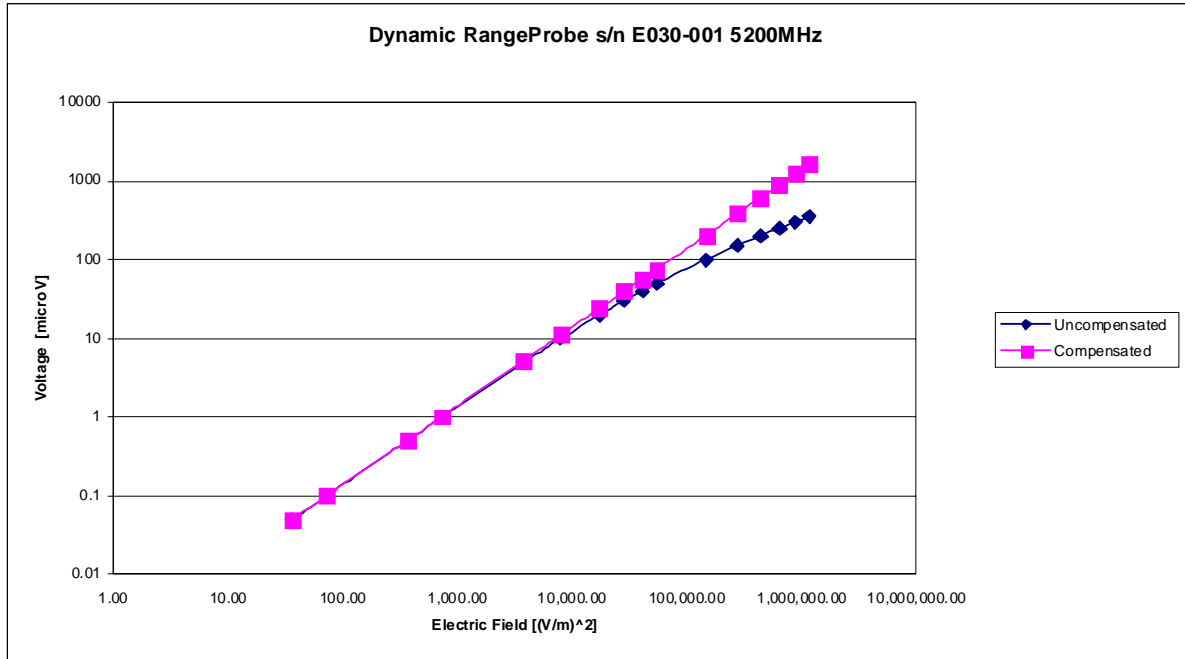
### Isotropy Error 5200 MHz (Air)



Isotropicity Tissue:

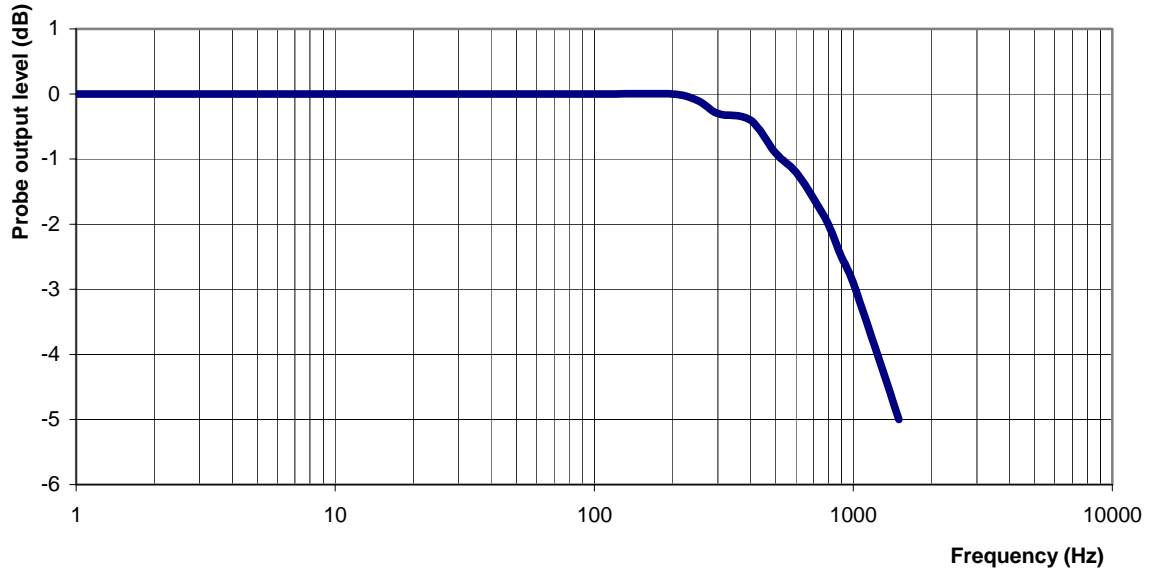
0.10 dB

## Dynamic Range



## Video Bandwidth

**Probe Frequency Characteristics**



**Video Bandwidth at 500 Hz**                      1 dB  
**Video Bandwidth at 1.02 KHz:**                3 dB

## **Conversion Factor Uncertainty Assessment**

### **Sensitivity in Body Tissue Measured**

<b>Frequency:</b>		5200 MHz	
<b>Epsilon:</b>	48.11	<b>Sigma:</b>	5.51 S/m
<b>ConvF</b>			
<b>Channel X:</b>	8.6	7%(K=2)	
<b>Channel Y:</b>	8.6	7%(K=2)	
<b>Channel Z:</b>	8.6	7%(K=2)	

To minimize the uncertainty calculation all tissue sensitivity values were calculated using a load impedance of 5 M $\Omega$ .

#### **Boundary Effect:**

For a distance of 0.58mm the evaluated uncertainty (increase in the probe sensitivity) is less than 2.1%.



## **Test Equipment**

The test equipment used during Probe Calibration, manufacturer, model number and, current calibration status are listed and located on the main APREL server R:\NCL\Calibration Equipment\Instrument List May 2007.

# NCL CALIBRATION LABORATORIES

Calibration File No.: CP-870

Client.: RFEL

## CERTIFICATE OF CALIBRATION

It is certified that the equipment identified below has been calibrated in the **NCL CALIBRATION LABORATORIES** by qualified personnel following recognized procedures and using transfer standards traceable to NRC/NIST.

Equipment: Miniature Isotropic RF Probe 5800 MHz

BODY Calibration

Manufacturer: APREL Laboratories

Model No.: E-020

Serial No.: E030-001

Calibration Procedure: SSI/DRB-TP-D01-032-E020-V2

Project No: RFEL-E030-5334

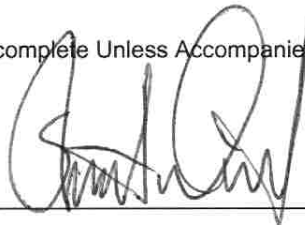
Calibrated: 14<sup>th</sup> April 2008

Released on: 14<sup>th</sup> April 2008

APREL Laboratories Certified Under Laboratory 48 of SCC

This Calibration Certificate is Incomplete Unless Accompanied with the Calibration Results Summary

Released By: \_\_\_\_\_



**NCL** CALIBRATION LABORATORIES

51 SPECTRUM WAY  
NEPEAN, ONTARIO  
CANADA K2R 1E6

Division of APREL Lab.  
TEL: (613) 820-4988  
FAX: (613) 820-4161

## Introduction

This Calibration Report reproduces the results of the calibration performed in line with the SSI/DRB-TP-D01-032-E020-V2 E-Field Probe Calibration Procedure. The results contained within this report are for APREL E-Field Probe E030-001.

## References

SSI/DRB-TP-D01-032-E020-V2 E-Field Probe Calibration Procedure  
IEEE 1528 "Recommended Practice for Determining the Peak Spatial-Average Specific Absorption Rate (SAR) in the Human Body Due to Wireless Communications Devices: Experimental Techniques"  
SSI-TP-011 Tissue Calibration Procedure  
IEC 62209 "Human exposure to radio frequency fields from hand-held and body-mounted wireless communication devices – Human models, instrumentation, and procedures –Part 1 & 2: Procedure to determine the Specific Absorption Rate (SAR) for hand-held devices used in close proximity of the ear (frequency range of 300 MHz to 3 GHz)"  
IEEE 1309 Draft Standard for Calibration of Electromagnetic Field Sensors and Probes, Excluding Antennas, from 9kHz to 40GHz

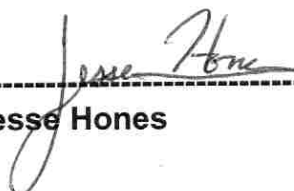
## Conditions

Probe E030-001 was a new probe.

**Ambient Temperature of the Laboratory:** 22 °C +/- 0.5°C  
**Temperature of the Tissue:** 21 °C +/- 0.5°C

**We the undersigned attest that to the best of our knowledge the calibration of this probe has been accurately conducted and that all information contained within this report has been reviewed for accuracy.**

  
-----  
**Stuart Nicol**

  
-----  
**Jesse Hones**

## Calibration Results Summary

<b>Probe Type:</b>	E-Field Probe E-030
<b>Serial Number:</b>	E030-001
<b>Frequency:</b>	5800 MHz
<b>Sensor Offset:</b>	1.06 mm
<b>Sensor Length:</b>	2.5 mm
<b>Tip Enclosure:</b>	Composite*
<b>Tip Diameter:</b>	<2.5 mm
<b>Tip Length:</b>	55 mm
<b>Total Length:</b>	289 mm

\*Resistive to recommended tissue recipes per IEEE-1528

## Sensitivity in Air

<b>Channel X:</b>	1.2 $\mu\text{V}/(\text{V}/\text{m})^2$
<b>Channel Y:</b>	1.2 $\mu\text{V}/(\text{V}/\text{m})^2$
<b>Channel Z:</b>	1.2 $\mu\text{V}/(\text{V}/\text{m})^2$
<b>Diode Compression Point:</b>	95 mV

## **Sensitivity in Body Tissue Measured**

**Frequency:** 5800 MHz

**Epsilon:** 46.38                      **Sigma:** 6.22 S/m

### **ConvF:**

**Channel X:** 12

**Channel Y:** 12

**Channel Z:** 12

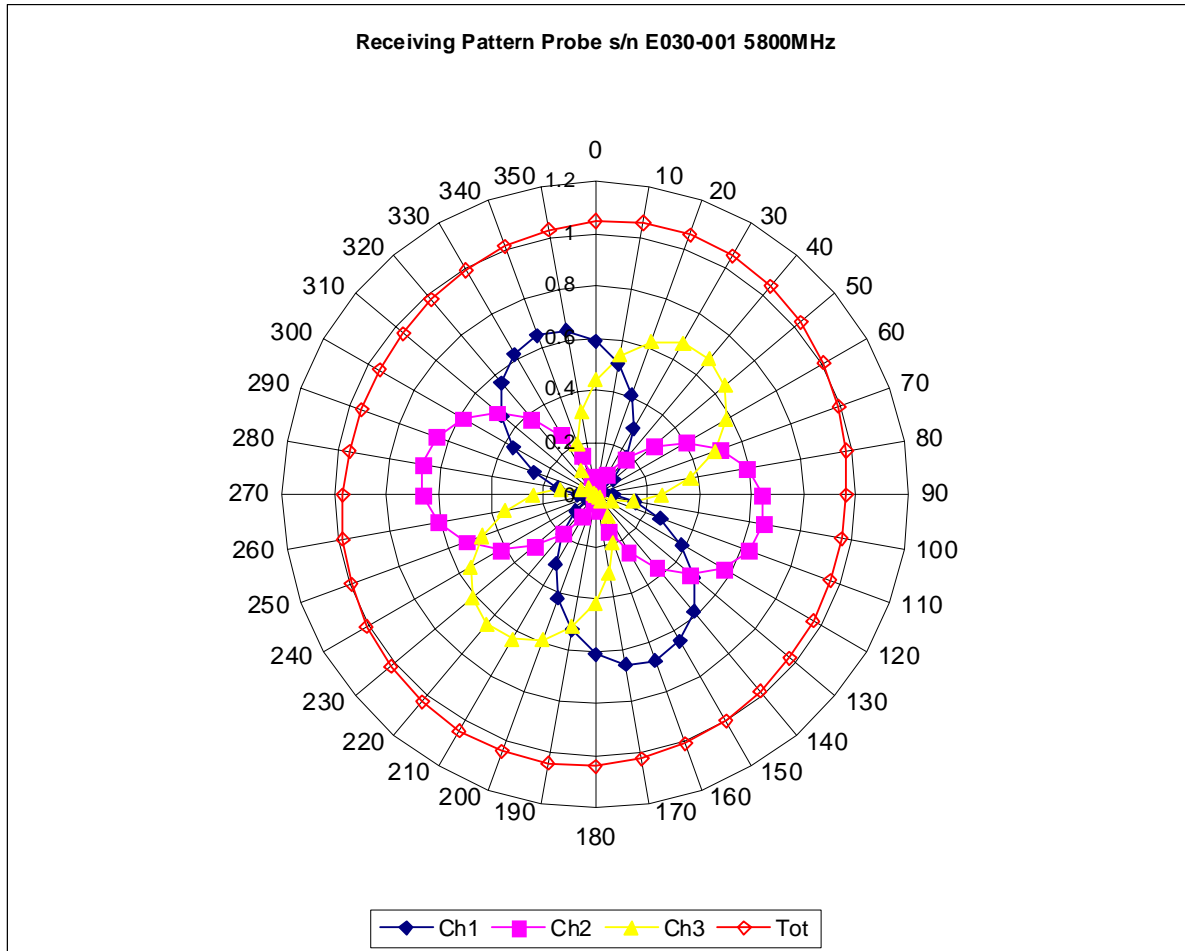
### **Boundary Effect:**

Uncertainty resulting from the boundary effect is less than 2.1% for the distance between the tip of the probe and the tissue boundary, when less than 0.58mm.

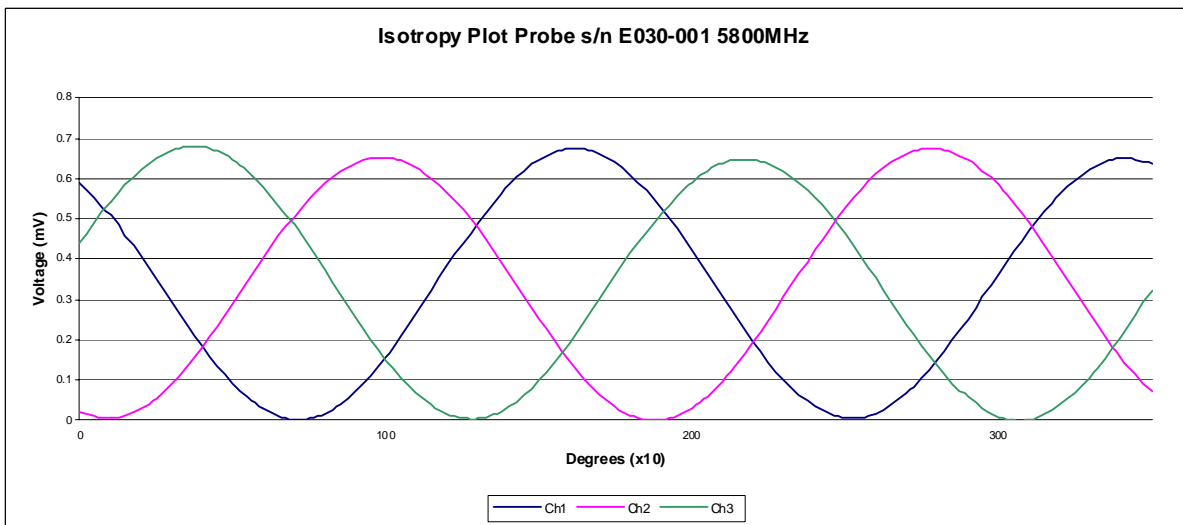
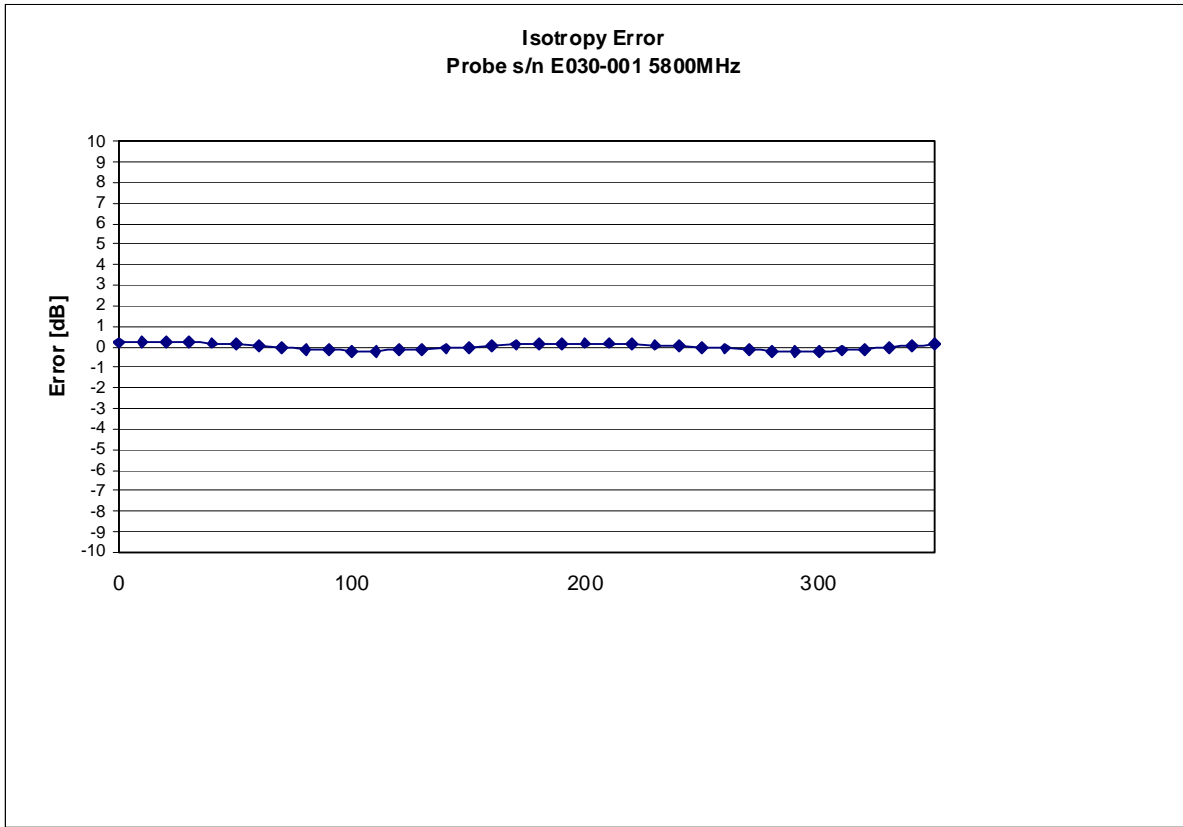
### **Spatial Resolution:**

The measured probe tip diameter is 2.5mm (+/- 0.01 mm) and therefore meets the requirements of SSI/DRB-TP-D01-032 for spatial resolution.

## Receiving Pattern 5800 MHz (Air)



### Isotropy Error 5800 MHz (Air)



Isotropicity Tissue:

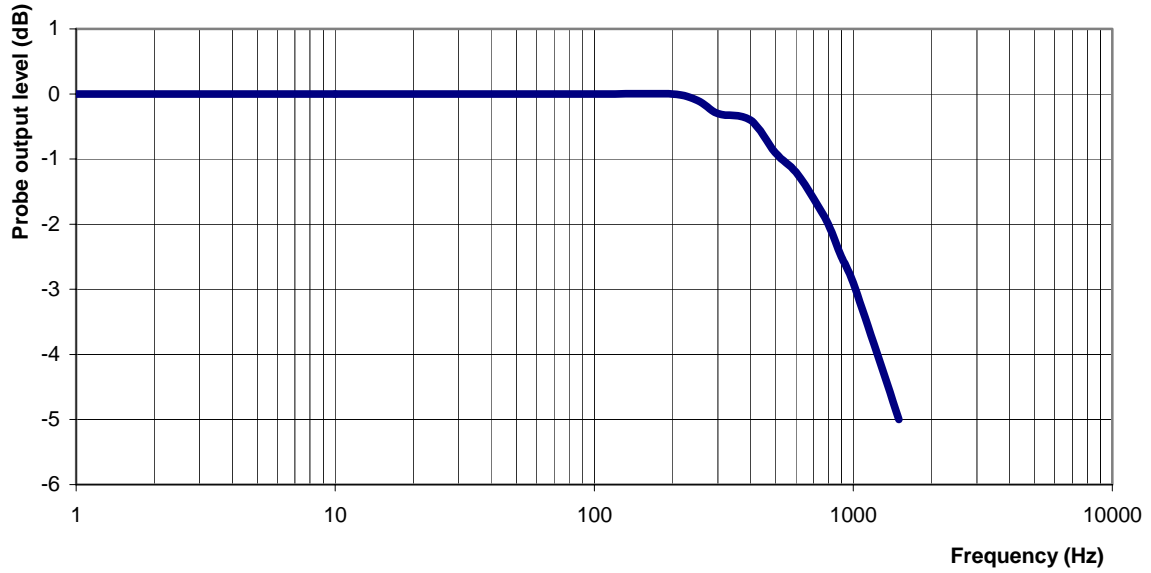
0.10 dB





## Video Bandwidth

**Probe Frequency Characteristics**



**Video Bandwidth at 500 Hz**                      1 dB  
**Video Bandwidth at 1.02 KHz:**                3 dB

## **Conversion Factor Uncertainty Assessment**

### **Sensitivity in Body Tissue Measured**

**Frequency:** 5800 MHz

**Epsilon:** 46.38

**Sigma:** 6.22 S/m

#### **ConvF**

**Channel X:** 12 7%(K=2)

**Channel Y:** 12 7%(K=2)

**Channel Z:** 12 7%(K=2)

To minimize the uncertainty calculation all tissue sensitivity values were calculated using a load impedance of 5 M $\Omega$ .

#### **Boundary Effect:**

For a distance of 0.58mm the evaluated uncertainty (increase in the probe sensitivity) is less than 2.1%.

## **Test Equipment**

The test equipment used during Probe Calibration, manufacturer, model number and, current calibration status are listed and located on the main APREL server R:\NCL\Calibration Equipment\Instrument List May 2007.

## Appendix E – Dipole Calibration Data Sheets

## RF Exposure Lab, LLC

Calibration File No: CAL.20080203

# CERTIFICATE OF CALIBRATION

It is certified that the equipment identified below has been calibrated at RF Exposure Lab, LLC by qualified personnel following recognized procedures and using transfer standards traceable to NRC/NIST.

### Validation Dipole

Manufacturer: APREL Laboratories

Part Number: ALS-D-835-S-2

Frequency: 835 MHz

Serial No: RFE-274

Manufactured: 20 February 2004  
Calibrated: 22 February 2008

Calibrated By: Signature on File  
Jay Moulton – Technical Manager

Approved By: Signature on File  
Tamara Moulton – Quality Manager

Measurement Uncertainty:

Repeatability:	23%
Tissue Uncertainty:	3.2%
Network Analyzer:	25%



## RF EXPOSURE LAB, LLC

2867 Progress Place, Suite 4D  
Escondido, CA 92029

Tel: (760) 737-3131  
FAX: (760) 737-9131

## Calibration Results Summary

The following results relate to the Calibrated Dipole and should be used as a quick reference for the user.

### Mechanical Dimensions

**Length:** 161.8 mm  
**Height:** 91.1 mm

### Electrical Specifications

#### Head

**SWR:** 1.1182 U  
**Return Loss:** -27.508 dB  
**Impedance:** 49.648  $\Omega$

### System Validation Results

Frequency	1 Gram	10 Gram
835 MHz	9.500	6.000

#### Body

**SWR:** 1.1533 U  
**Return Loss:** -23.596 dB  
**Impedance:** 51.395  $\Omega$

### System Validation Results

Frequency	1 Gram	10 Gram
835 MHz	9.750	6.240

## Head Measurement Conditions

The measurements were performed in the Uni-Phantom filled with head simulating liquid of the following electrical parameters at 835 MHz:

Relative Dielectricity	41.48	± 5%
Conductivity	0.92 mho/m	± 5%

The APREL Laboratories ALSAS system with a dosimetric E-field probe E-020 (SN:217, Conversion factor 6.0 at 835 MHz) was used for the measurements.

The dipole was mounted so that the dipole feed point was positioned below the center marking of the flat phantom and the dipole was oriented parallel to the body axis (the long side of the phantom). The standard measuring distance was 15mm from the dipole center to the solution surface.

The coarse grid with a grid spacing of 10mm was aligned with the dipole. The 5x5x8 fine cube was chosen for cube integration. The dipole input power (forward power) was 100mW ± 3%. The results are normalized to 1W input power.

The laboratories environmental conditions were as follows during the calibration sequence.

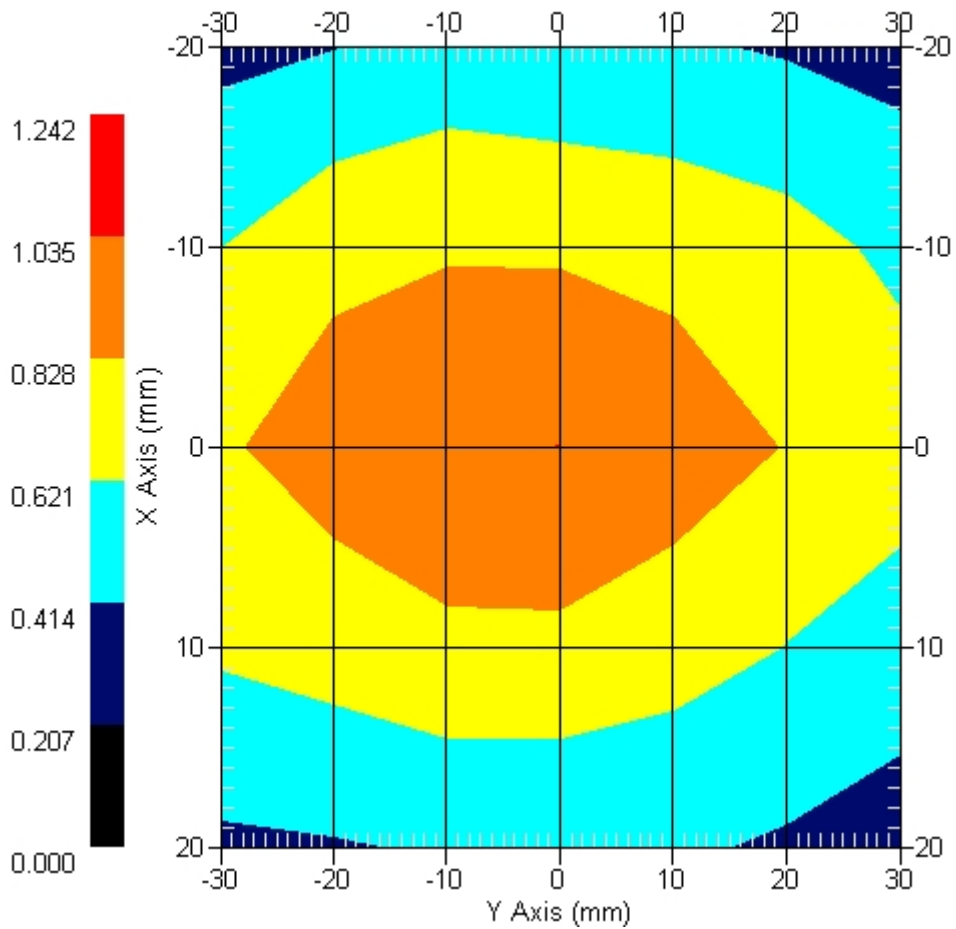
Ambient Temperature of the Laboratory:	24 °C ± 1.0 °C
Temperature of the Tissue:	20 °C ± 1.0 °C
Relative Humidity:	40%

**SAR Measurement**

Standard SAR measurements were performed according to the measurement conditions described above. The results have been normalized to a dipole input power of 1W (forward power). The resulting averaged SAR values measured with the dosimetric probe E-020 SN:217 and applying the advanced extrapolation are:

Averaged over 1 cm<sup>3</sup> (1 g) of tissue: 9.500 mW/g ± 19.0% (k=2)<sup>1</sup>  
 Averaged over 10 cm<sup>3</sup> (10 g) of tissue: 6.000 mW/g ± 18.5% (k=2)<sup>1</sup>

**Area Scan**



1 gram SAR value : 0.950 W/kg  
 10 gram SAR value : 0.600 W/kg  
 Area Scan Peak SAR : 1.037 W/kg  
 Zoom Scan Peak SAR : 1.541 W/kg

<sup>1</sup> validation uncertainty



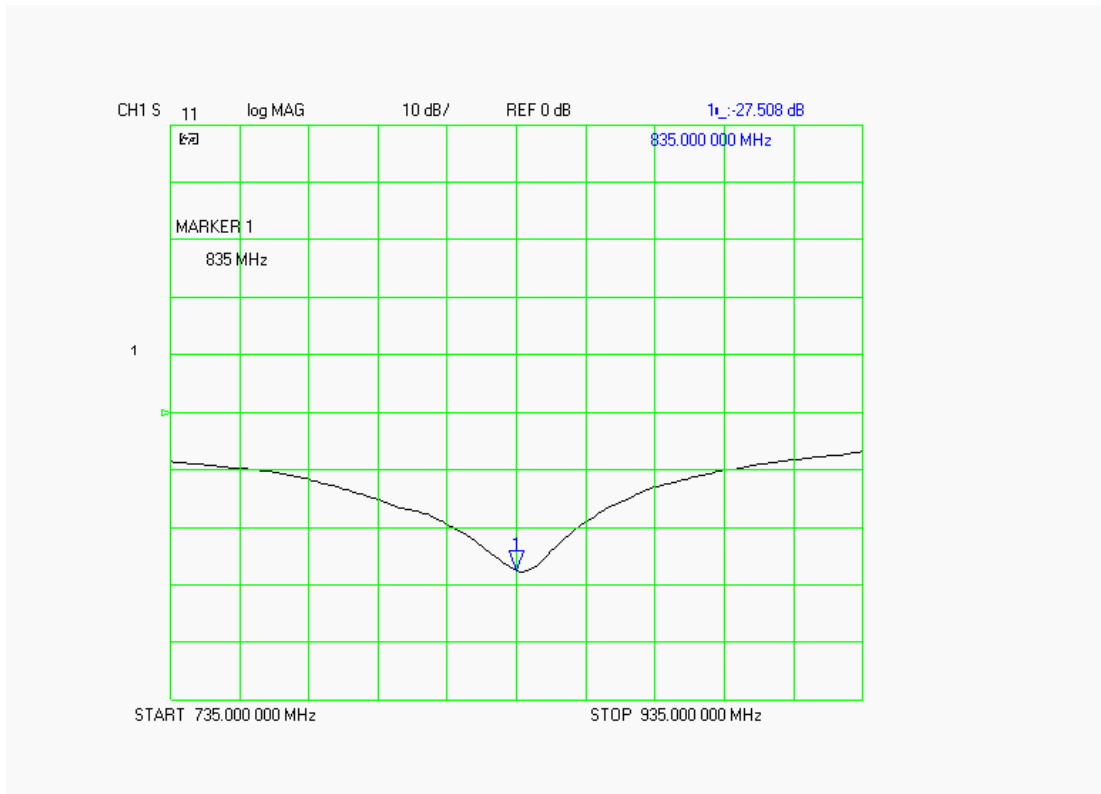
### Dipole Impedance and Return Loss

The impedance was measured at the SMA connector with a network analyzer. The dipole was positioned at the flat phantom sections according to measurement conditions stated above during impedance measurements.

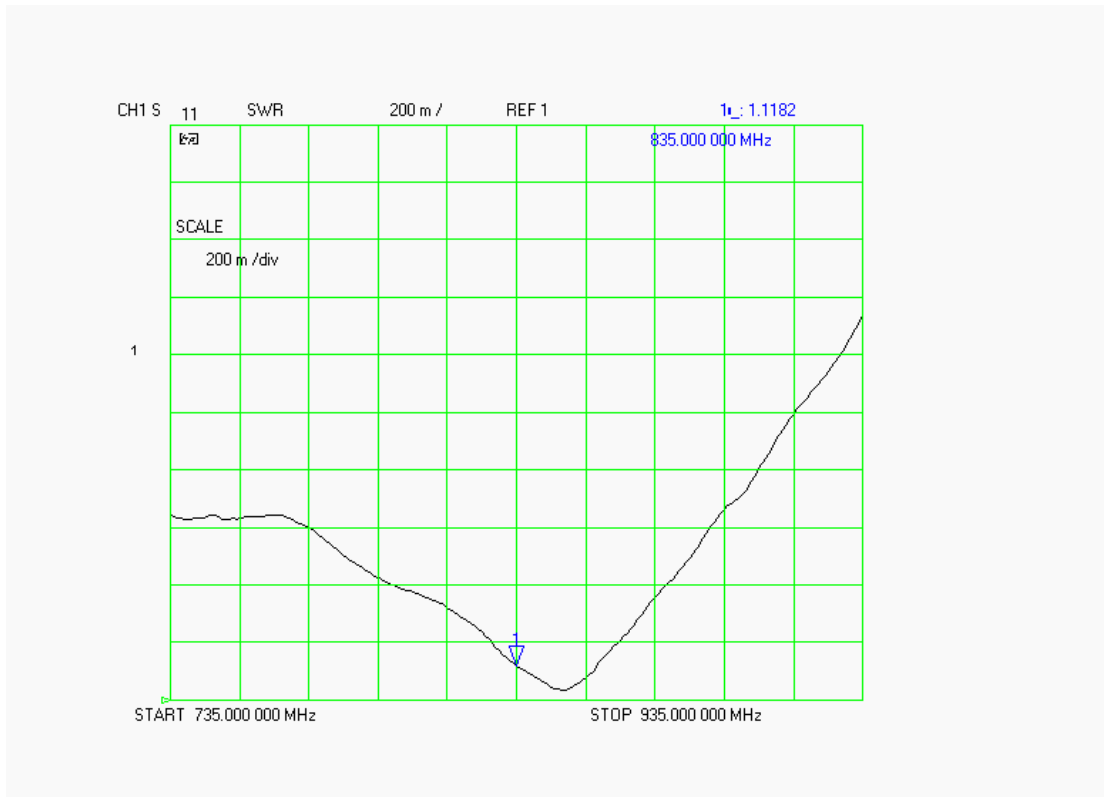
Test	Result
S11 R/L	-27.508 dB
SWR	1.1182 U
Impedance	49.648 $\Omega$

The following graphs are the results as displayed on the Vector Network Analyzer.

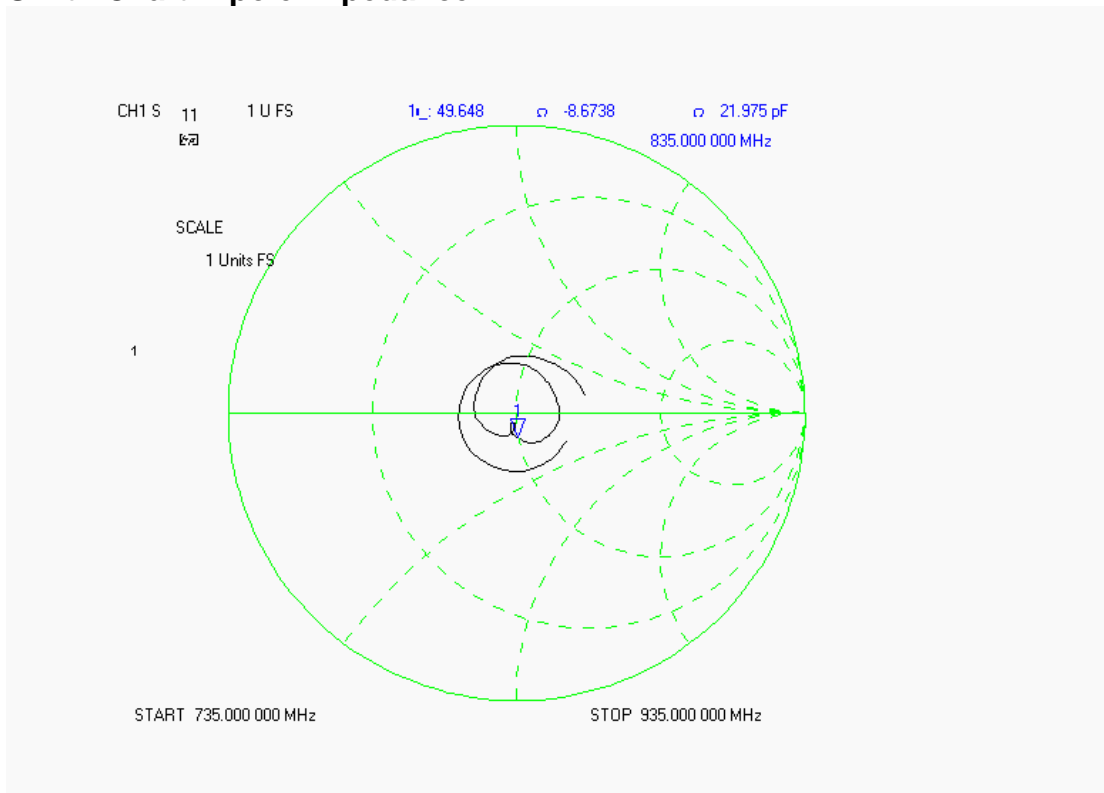
### S11 Parameter Return Loss



### SWR



### Smith Chart Dipole Impedance



## Body Measurement Conditions

The measurements were performed in the Uni-Phantom filled with body simulating liquid of the following electrical parameters at 835 MHz:

Relative Dielectricity	55.20	± 5%
Conductivity	0.96 mho/m	± 5%

The APREL Laboratories ALSAS system with a dosimetric E-field probe E-020 (SN:217, Conversion factor 6.1 at 835 MHz) was used for the measurements.

The dipole was mounted so that the dipole feed point was positioned below the center marking of the flat phantom and the dipole was oriented parallel to the body axis (the long side of the phantom). The standard measuring distance was 15mm from the dipole center to the solution surface.

The coarse grid with a grid spacing of 10mm was aligned with the dipole. The 5x5x8 fine cube was chosen for cube integration. The dipole input power (forward power) was 100mW ± 3%. The results are normalized to 1W input power.

The laboratories environmental conditions were as follows during the calibration sequence.

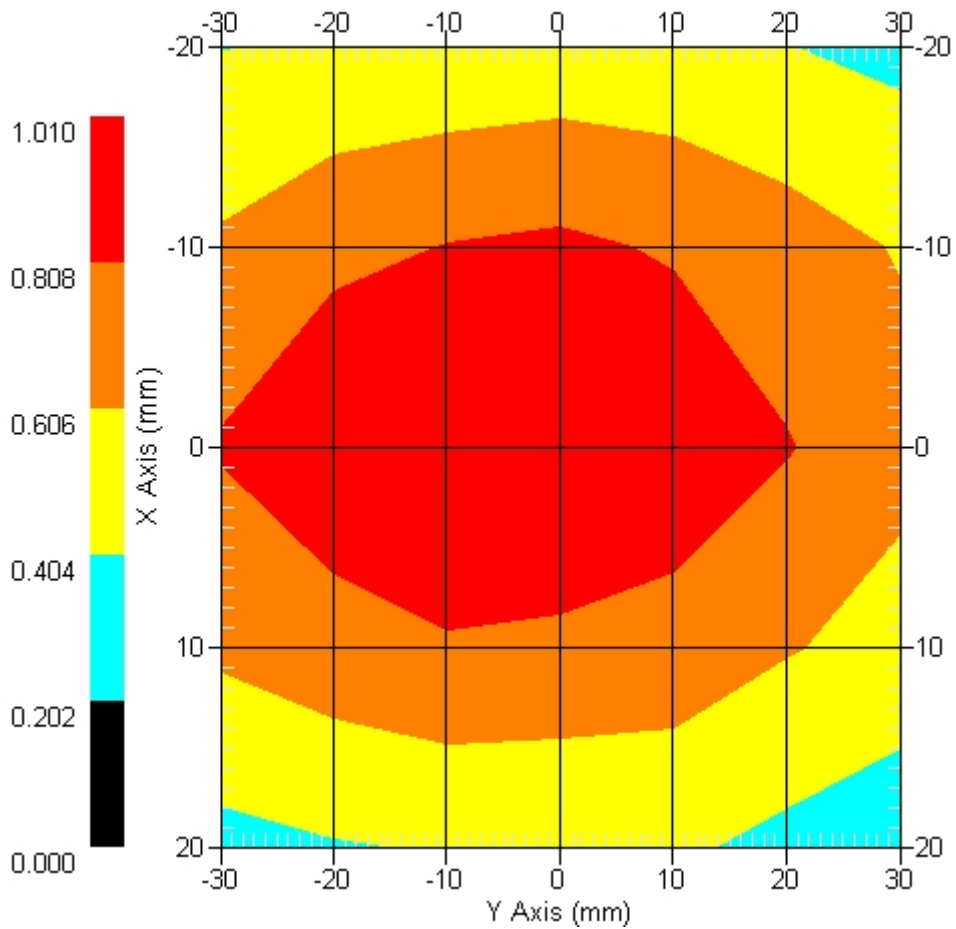
Ambient Temperature of the Laboratory:	24 °C ± 1.0 °C
Temperature of the Tissue:	20 °C ± 1.0 °C
Relative Humidity:	40%

**SAR Measurement**

Standard SAR measurements were performed according to the measurement conditions described above. The results have been normalized to a dipole input power of 1W (forward power). The resulting averaged SAR values measured with the dosimetric probe E-020 SN:217 and applying the advanced extrapolation are:

Averaged over 1 cm<sup>3</sup> (1 g) of tissue: 9.750 mW/g ± 19.1% (k=2)<sup>1</sup>  
 Averaged over 10 cm<sup>3</sup> (10 g) of tissue: 6.240 mW/g ± 18.6% (k=2)<sup>1</sup>

**Area Scan**



1 gram SAR value : 0.975 W/kg  
 10 gram SAR value : 0.624 W/kg  
 Area Scan Peak SAR : 1.009 W/kg  
 Zoom Scan Peak SAR : 1.571 W/kg

<sup>1</sup> validation uncertainty

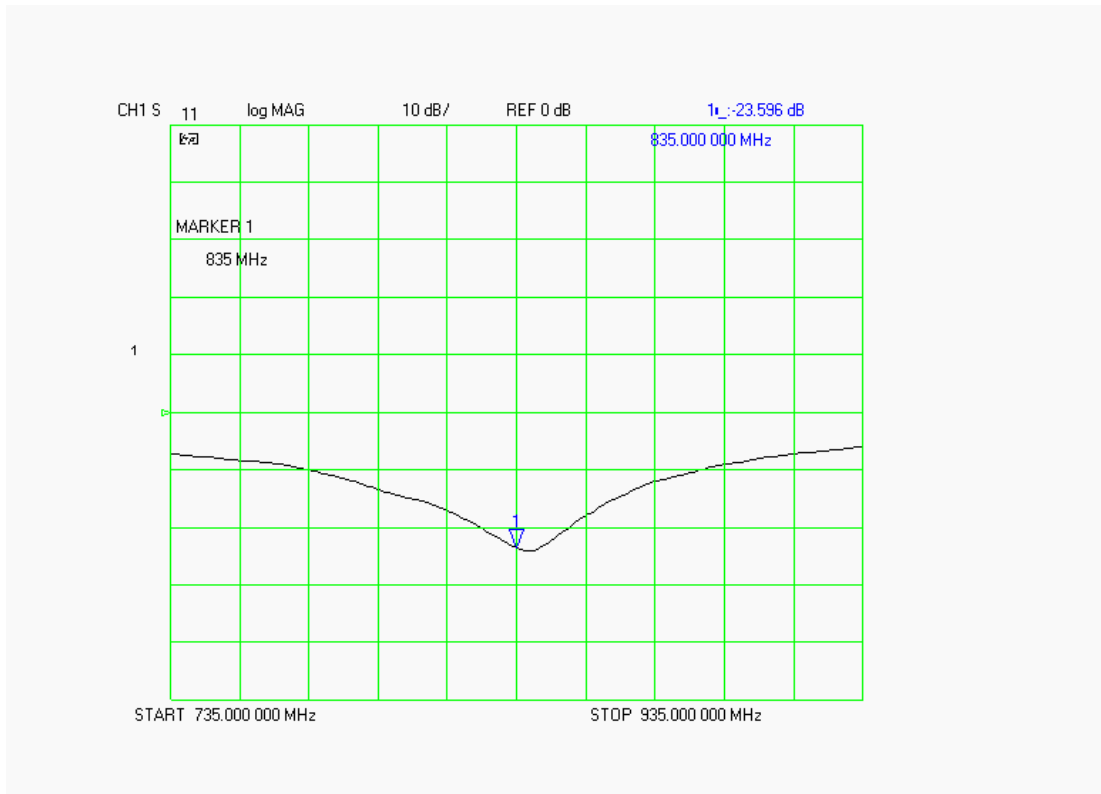
### Dipole Impedance and Return Loss

The impedance was measured at the SMA connector with a network analyzer. The dipole was positioned at the flat phantom sections according to measurement conditions stated above during impedance measurements.

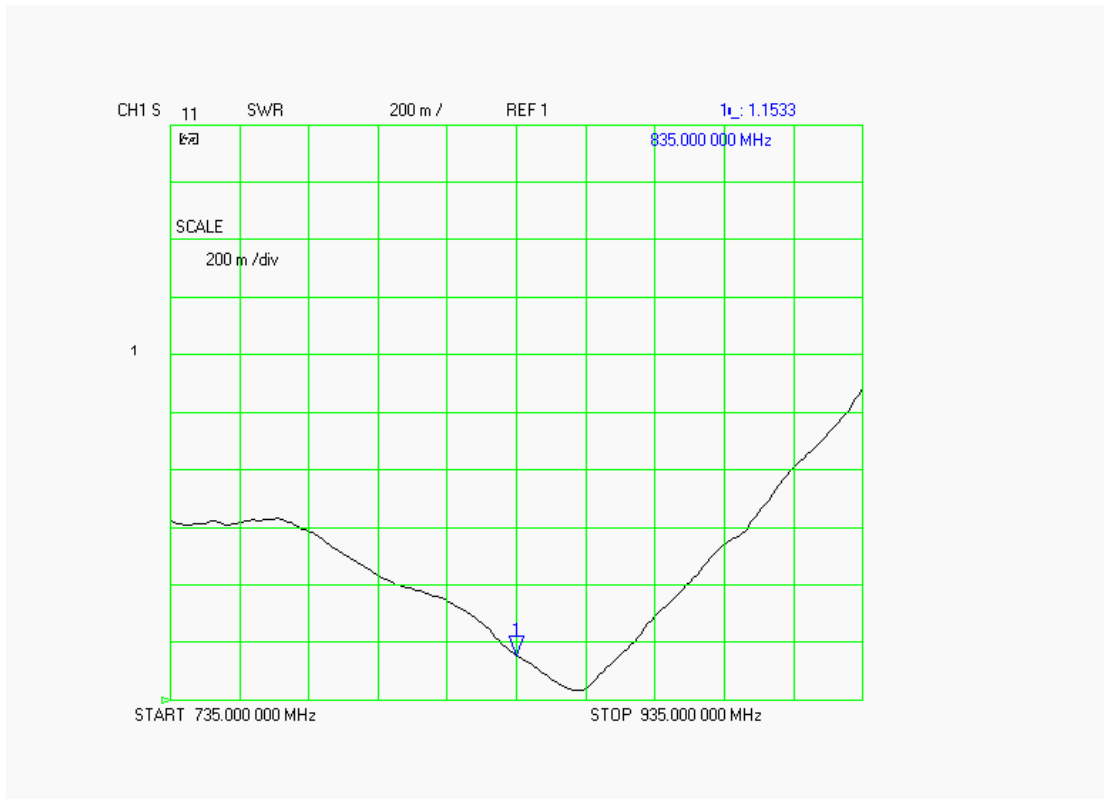
Test	Result
S11 R/L	-23.596 dB
SWR	1.1533 U
Impedance	51.395 $\Omega$

The following graphs are the results as displayed on the Vector Network Analyzer.

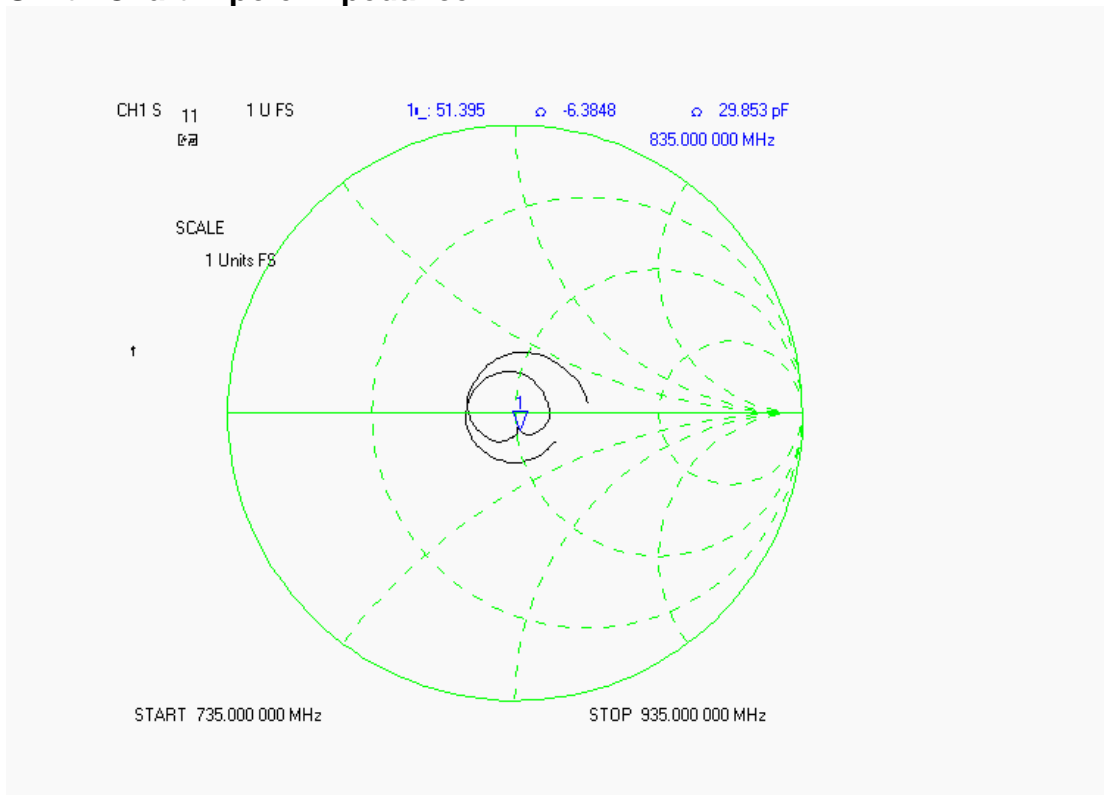
### S11 Parameter Return Loss



### SWR



### Smith Chart Dipole Impedance



## Test Equipment List

The test equipment used during Dipole Calibration, manufacturer, model number and, current calibration status are listed and located on the RF Exposure Lab, LLC system computer C:\Test Equipment\Calibration Equipment\Instrument List February 2008.

## RF Exposure Lab, LLC

Calibration File No: CAL.20080202

# CERTIFICATE OF CALIBRATION

It is certified that the equipment identified below has been calibrated at RF Exposure Lab, LLC by qualified personnel following recognized procedures and using transfer standards traceable to NRC/NIST.

### Validation Dipole

Manufacturer: APREL Laboratories

Part Number: ALS-D-1900-S-2

Frequency: 1.9 GHz

Serial No: RFE-277

Manufactured: 20 February 2004  
Calibrated: 21 February 2008

Calibrated By: Signature on File  
Jay Moulton – Technical Manager

Approved By: Signature on File  
Tamara Moulton – Quality Manager

Measurement Uncertainty:

Repeatability:	23%
Tissue Uncertainty:	3.2%
Network Analyzer:	25%



## RF EXPOSURE LAB, LLC

2867 Progress Place, Suite 4D  
Escondido, CA 92029

Tel: (760) 737-3131  
FAX: (760) 737-9131



## Calibration Results Summary

The following results relate to the Calibrated Dipole and should be used as a quick reference for the user.

### Mechanical Dimensions

**Length:** 68.0 mm  
**Height:** 37.5 mm

### Electrical Specifications

#### Head

**SWR:** 1.0793 U  
**Return Loss:** -38.514 dB  
**Impedance:** 49.063  $\Omega$

### System Validation Results

Frequency	1 Gram	10 Gram
1.9 GHz	39.380	20.270

#### Body

**SWR:** 1.1006 U  
**Return Loss:** -41.682 dB  
**Impedance:** 53.580  $\Omega$

### System Validation Results

Frequency	1 Gram	10 Gram
1.9 GHz	40.990	21.090

## Head Measurement Conditions

The measurements were performed in the Uni-Phantom filled with head simulating liquid of the following electrical parameters at 1900 MHz:

Relative Dielectricity	39.97	± 5%
Conductivity	1.41 mho/m	± 5%

The APREL Laboratories ALSAS system with a dosimetric E-field probe E-020 (SN:217, Conversion factor 4.65 at 1900 MHz) was used for the measurements.

The dipole was mounted so that the dipole feed point was positioned below the center marking of the flat phantom and the dipole was oriented parallel to the body axis (the long side of the phantom). The standard measuring distance was 10mm from the dipole center to the solution surface.

The coarse grid with a grid spacing of 10mm was aligned with the dipole. The 5x5x8 fine cube was chosen for cube integration. The dipole input power (forward power) was 100mW ± 3%. The results are normalized to 1W input power.

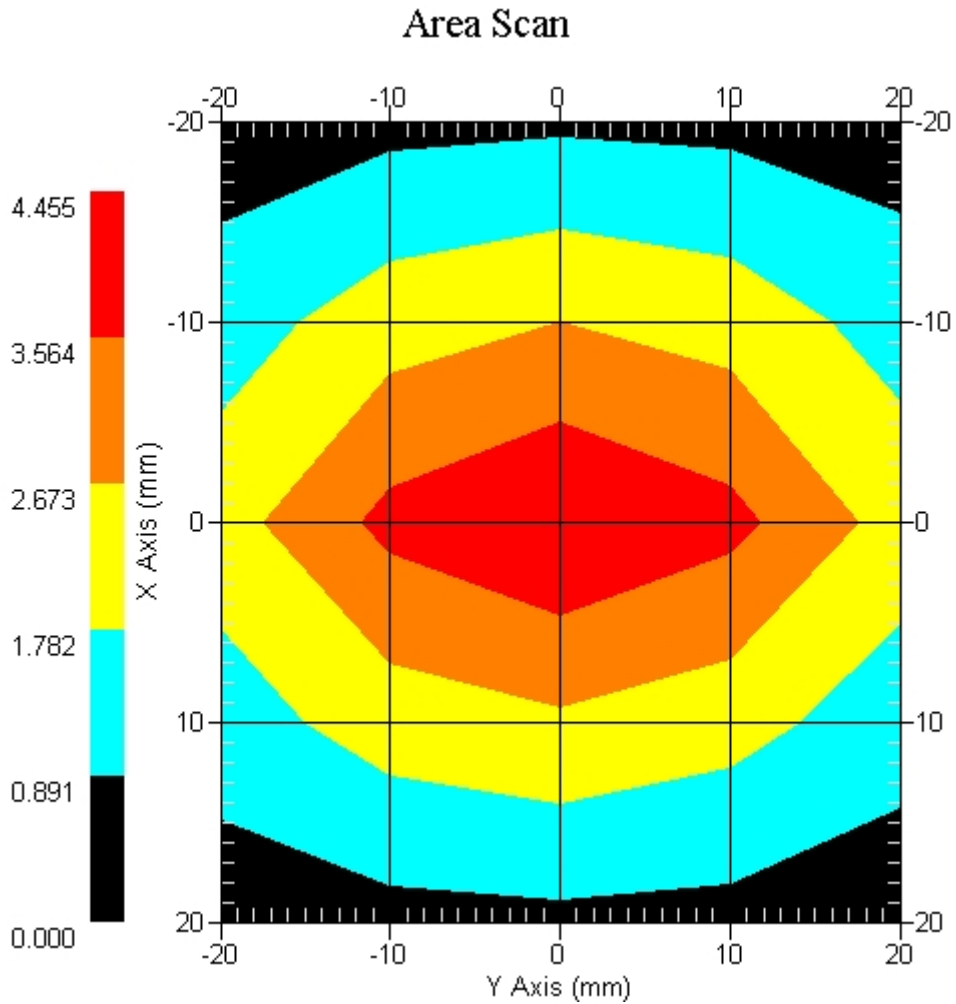
The laboratories environmental conditions were as follows during the calibration sequence.

Ambient Temperature of the Laboratory:	23 °C ± 1.0 °C
Temperature of the Tissue:	20 °C ± 1.0 °C
Relative Humidity:	40%

**SAR Measurement**

Standard SAR measurements were performed according to the measurement conditions described above. The results have been normalized to a dipole input power of 1W (forward power). The resulting averaged SAR values measured with the dosimetric probe E-020 SN:217 and applying the advanced extrapolation are:

Averaged over 1 cm<sup>3</sup> (1 g) of tissue:                      39.380 mW/g ± 19.2% (k=2)<sup>1</sup>  
 Averaged over 10 cm<sup>3</sup> (10 g) of tissue:                      20.270 mW/g ± 18.8% (k=2)<sup>1</sup>



1 gram SAR value : 3.938 W/kg  
 10 gram SAR value : 2.027 W/kg  
 Area Scan Peak SAR : 4.455 W/kg  
 Zoom Scan Peak SAR : 7.246 W/kg

<sup>1</sup> validation uncertainty

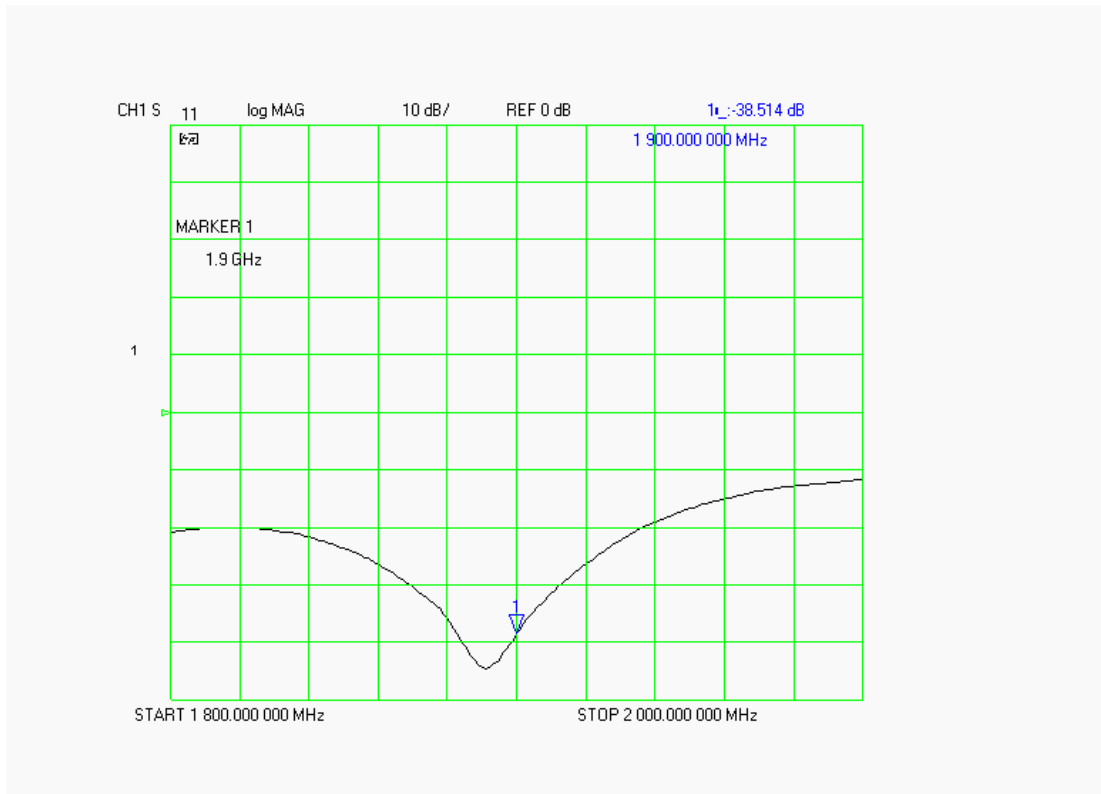
### Dipole Impedance and Return Loss

The impedance was measured at the SMA connector with a network analyzer. The dipole was positioned at the flat phantom sections according to measurement conditions stated above during impedance measurements.

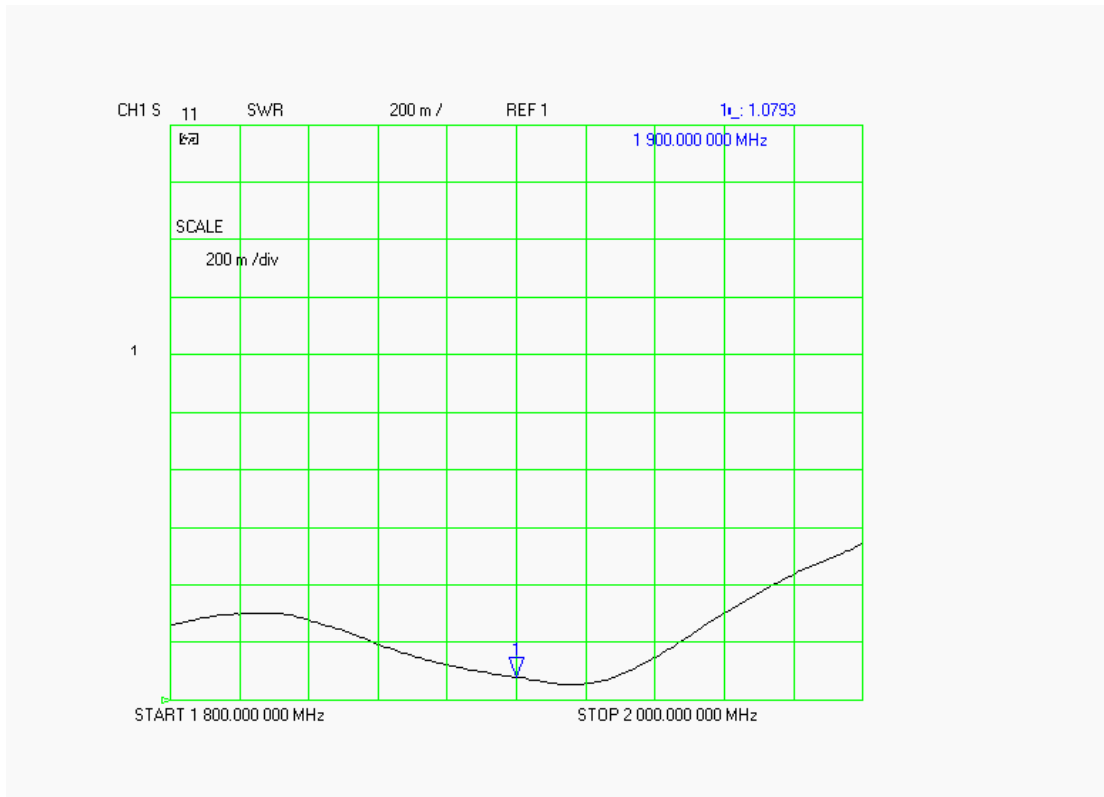
Test	Result
S11 R/L	-38.514 dB
SWR	1.0793 U
Impedance	49.063 $\Omega$

The following graphs are the results as displayed on the Vector Network Analyzer.

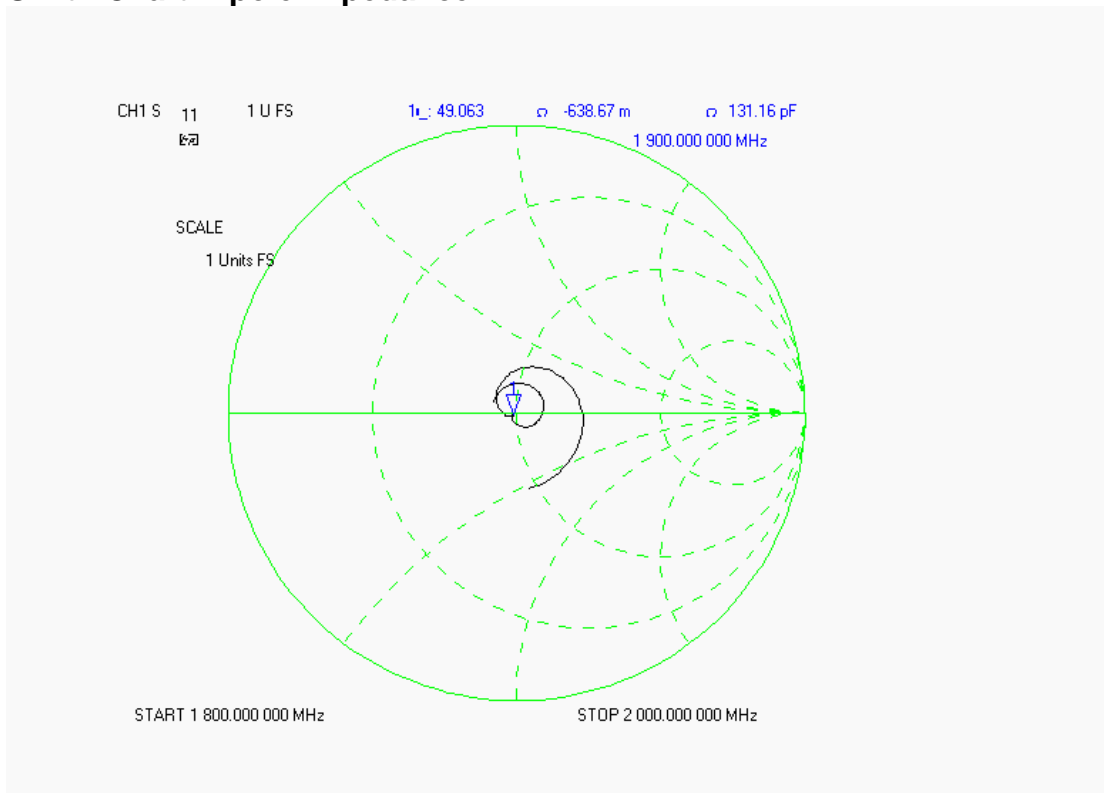
### S11 Parameter Return Loss



### SWR



### Smith Chart Dipole Impedance



## Body Measurement Conditions

The measurements were performed in the Uni-Phantom filled with body simulating liquid of the following electrical parameters at 1900 MHz:

Relative Dielectricity	53.27	± 5%
Conductivity	1.50 mho/m	± 5%

The APREL Laboratories ALSAS system with a dosimetric E-field probe E-020 (SN:217, Conversion factor 4.85 at 1900 MHz) was used for the measurements.

The dipole was mounted so that the dipole feed point was positioned below the center marking of the flat phantom and the dipole was oriented parallel to the body axis (the long side of the phantom). The standard measuring distance was 10mm from the dipole center to the solution surface.

The coarse grid with a grid spacing of 10mm was aligned with the dipole. The 5x5x8 fine cube was chosen for cube integration. The dipole input power (forward power) was 100mW ± 3%. The results are normalized to 1W input power.

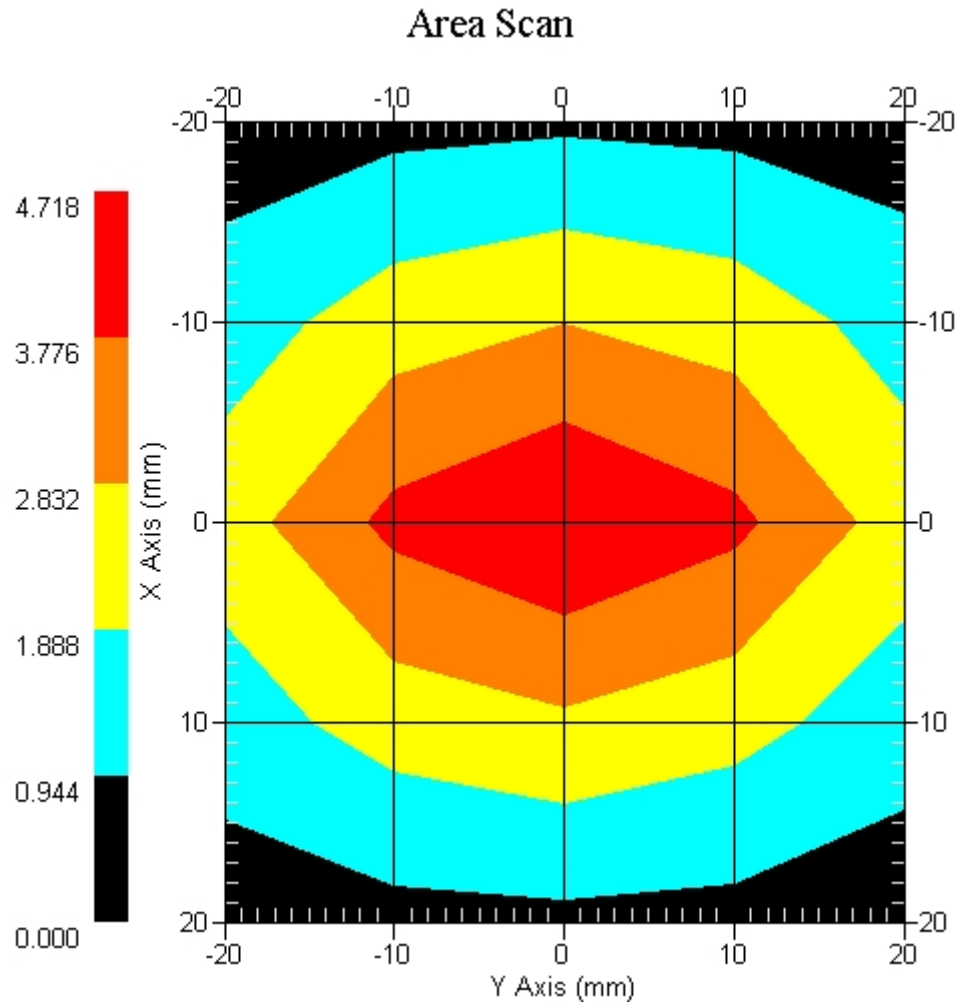
The laboratories environmental conditions were as follows during the calibration sequence.

Ambient Temperature of the Laboratory:	23 °C ± 1.0 °C
Temperature of the Tissue:	20 °C ± 1.0 °C
Relative Humidity:	40%

**SAR Measurement**

Standard SAR measurements were performed according to the measurement conditions described above. The results have been normalized to a dipole input power of 1W (forward power). The resulting averaged SAR values measured with the dosimetric probe E-020 SN:217 and applying the advanced extrapolation are:

Averaged over 1 cm<sup>3</sup> (1 g) of tissue:                    40.990 mW/g ± 18.9% (k=2)<sup>1</sup>  
 Averaged over 10 cm<sup>3</sup> (10 g) of tissue:                    21.090 mW/g ± 18.5% (k=2)<sup>1</sup>



1 gram SAR value : 4.099 W/kg  
 10 gram SAR value : 2.109 W/kg  
 Area Scan Peak SAR : 4.718 W/kg  
 Zoom Scan Peak SAR : 7.606 W/kg

<sup>1</sup> validation uncertainty

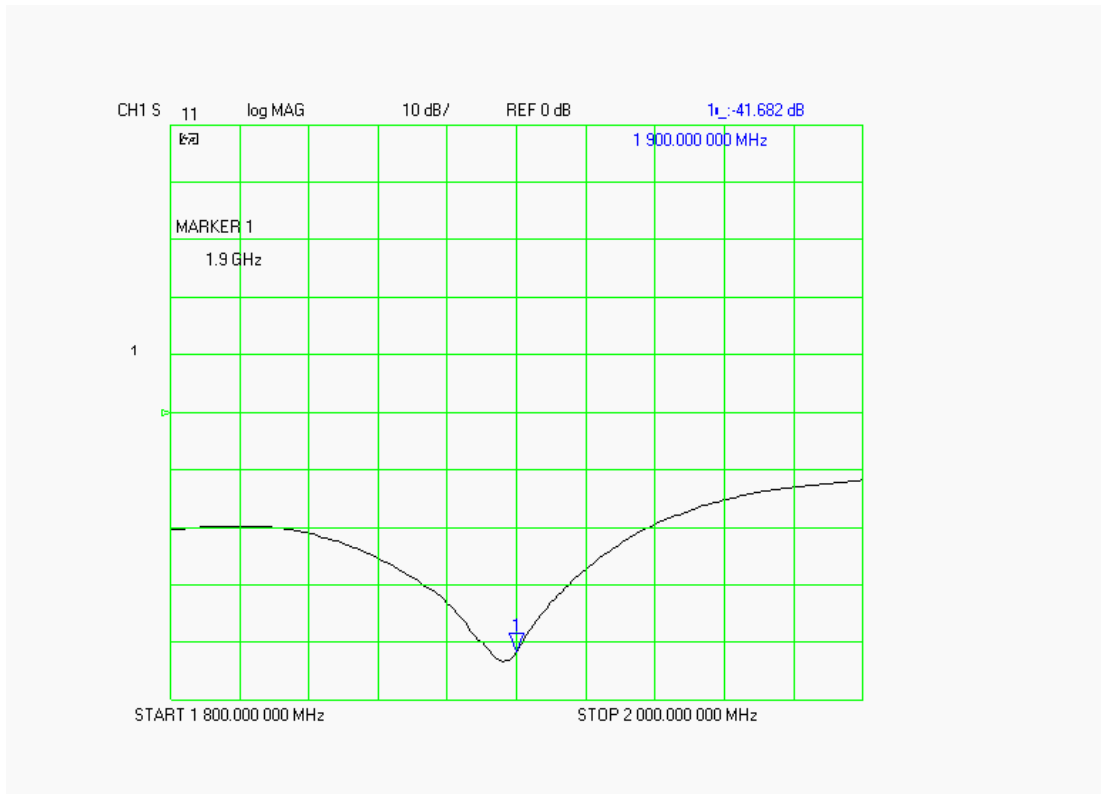
### Dipole Impedance and Return Loss

The impedance was measured at the SMA connector with a network analyzer. The dipole was positioned at the flat phantom sections according to measurement conditions stated above during impedance measurements.

Test	Result
S11 R/L	-41.682 dB
SWR	1.1006 U
Impedance	53.580 $\Omega$

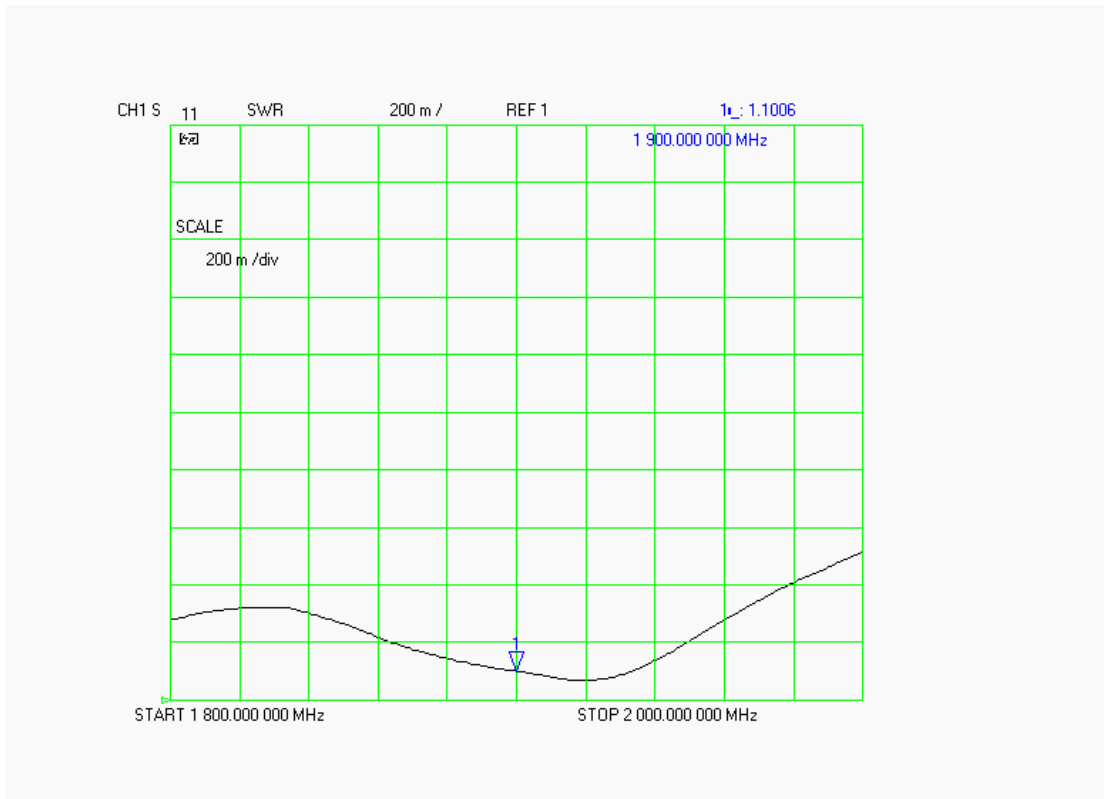
The following graphs are the results as displayed on the Vector Network Analyzer.

### S11 Parameter Return Loss

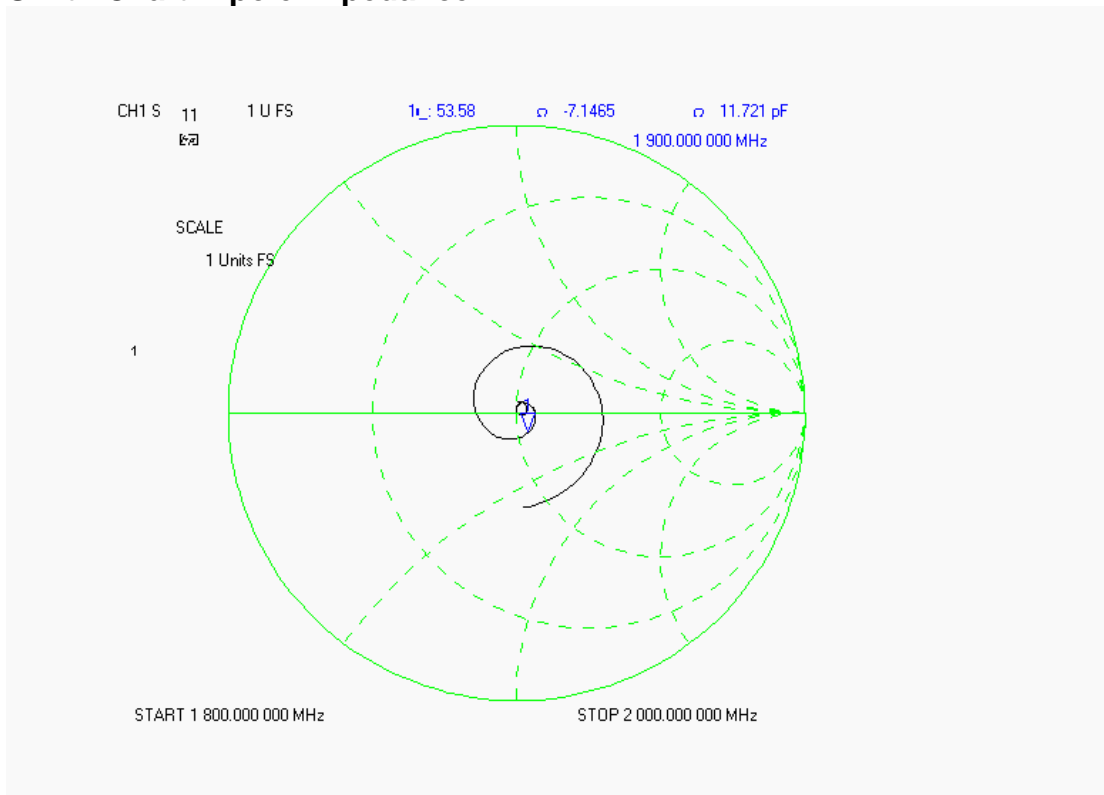




**SWR**



**Smith Chart Dipole Impedance**



## Test Equipment List

The test equipment used during Dipole Calibration, manufacturer, model number and, current calibration status are listed and located on the RF Exposure Lab, LLC system computer C:\Test Equipment\Calibration Equipment\Instrument List February 2008.

## RF Exposure Lab, LLC

Calibration File No: CAL.20080201

# CERTIFICATE OF CALIBRATION

It is certified that the equipment identified below has been calibrated at RF Exposure Lab, LLC by qualified personnel following recognized procedures and using transfer standards traceable to NRC/NIST.

### Validation Dipole

Manufacturer: APREL Laboratories

Part Number: ALS-D-2450-S-2

Frequency: 2.4 GHz

Serial No: RFE-278

Manufactured: 20 February 2004  
Calibrated: 20 February 2008

Calibrated By: Signature on File  
Jay Moulton – Technical Manager

Approved By: Signature on File  
Tamara Moulton – Quality Manager

Measurement Uncertainty:

Repeatability:	23%
Tissue Uncertainty:	3.2%
Network Analyzer:	25%



## RF EXPOSURE LAB, LLC

2867 Progress Place, Suite 4D  
Escondido, CA 92029

Tel: (760) 737-3131  
FAX: (760) 737-9131

## Calibration Results Summary

The following results relate to the Calibrated Dipole and should be used as a quick reference for the user.

### Mechanical Dimensions

**Length:** 51.5 mm  
**Height:** 30.5 mm

### Electrical Specifications

#### Head

**SWR:** 1.0953 U  
**Return Loss:** -29.601 dB  
**Impedance:** 53.854  $\Omega$

### System Validation Results

Frequency	1 Gram	10 Gram
2.45 GHz	52.880	24.500

#### Body

**SWR:** 1.1354 U  
**Return Loss:** -31.173 dB  
**Impedance:** 54.146  $\Omega$

### System Validation Results

Frequency	1 Gram	10 Gram
2.45 GHz	53.550	24.710

## Head Measurement Conditions

The measurements were performed in the Uni-Phantom filled with head simulating liquid of the following electrical parameters at 2450 MHz:

Relative Dielectricity	39.37	± 5%
Conductivity	1.78 mho/m	± 5%

The APREL Laboratories ALSAS system with a dosimetric E-field probe E-020 (SN:217, Conversion factor 3.4 at 2450 MHz) was used for the measurements.

The dipole was mounted so that the dipole feed point was positioned below the center marking of the flat phantom and the dipole was oriented parallel to the body axis (the long side of the phantom). The standard measuring distance was 10mm from the dipole center to the solution surface.

The coarse grid with a grid spacing of 10mm was aligned with the dipole. The 5x5x8 fine cube was chosen for cube integration. The dipole input power (forward power) was 100mW ± 3%. The results are normalized to 1W input power.

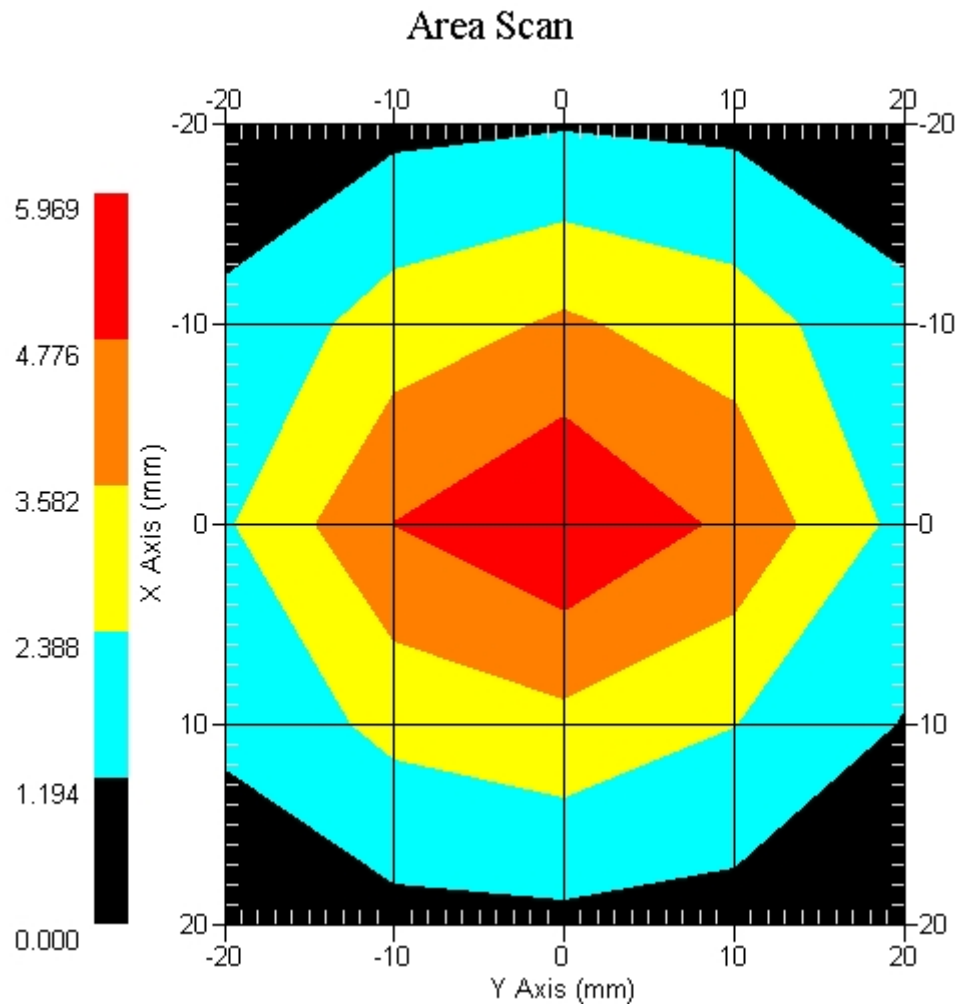
The laboratories environmental conditions were as follows during the calibration sequence.

Ambient Temperature of the Laboratory:	24 °C ± 1.0 °C
Temperature of the Tissue:	20 °C ± 1.0 °C
Relative Humidity:	41%

**SAR Measurement**

Standard SAR measurements were performed according to the measurement conditions described above. The results have been normalized to a dipole input power of 1W (forward power). The resulting averaged SAR values measured with the dosimetric probe E-020 SN:217 and applying the advanced extrapolation are:

Averaged over 1 cm<sup>3</sup> (1 g) of tissue:                      52.880 mW/g ± 19.7% (k=2)<sup>1</sup>  
 Averaged over 10 cm<sup>3</sup> (10 g) of tissue:                      24.500 mW/g ± 19.4% (k=2)<sup>1</sup>



1 gram SAR value : 5.288 W/kg  
 10 gram SAR value : 2.450 W/kg  
 Area Scan Peak SAR : 5.969 W/kg  
 Zoom Scan Peak SAR : 10.890 W/kg

<sup>1</sup> validation uncertainty

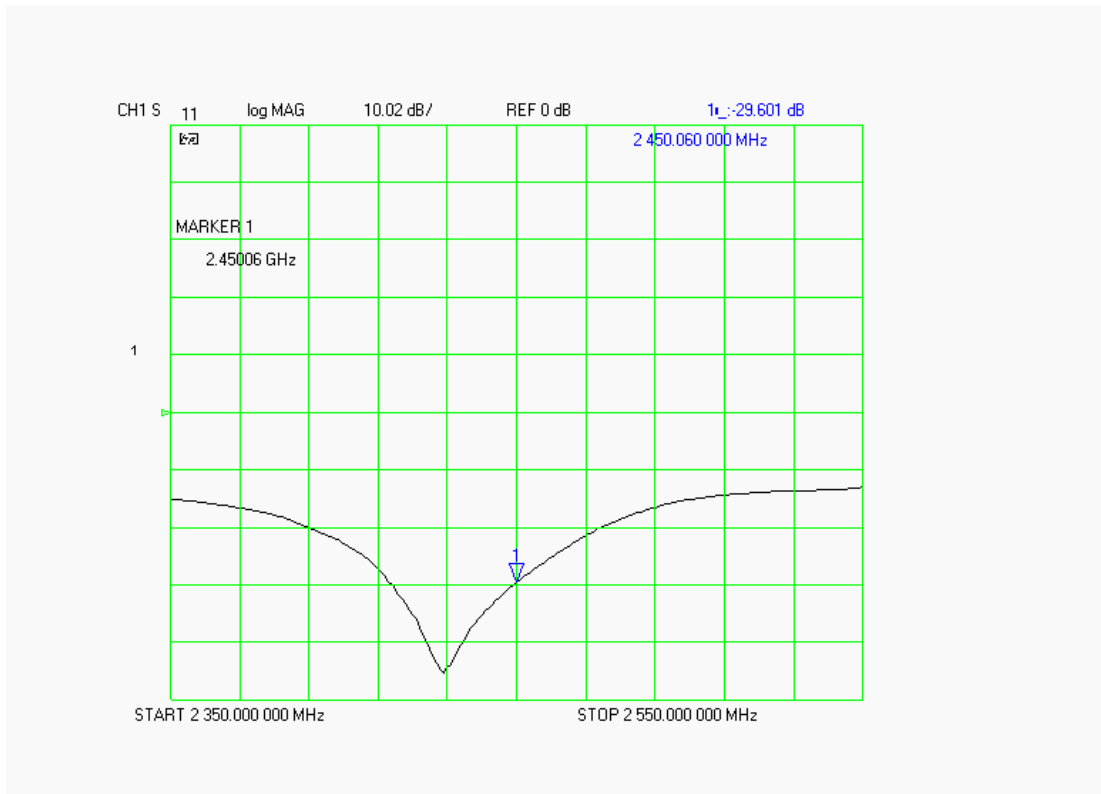
### Dipole Impedance and Return Loss

The impedance was measured at the SMA connector with a network analyzer. The dipole was positioned at the flat phantom sections according to measurement conditions stated above during impedance measurements.

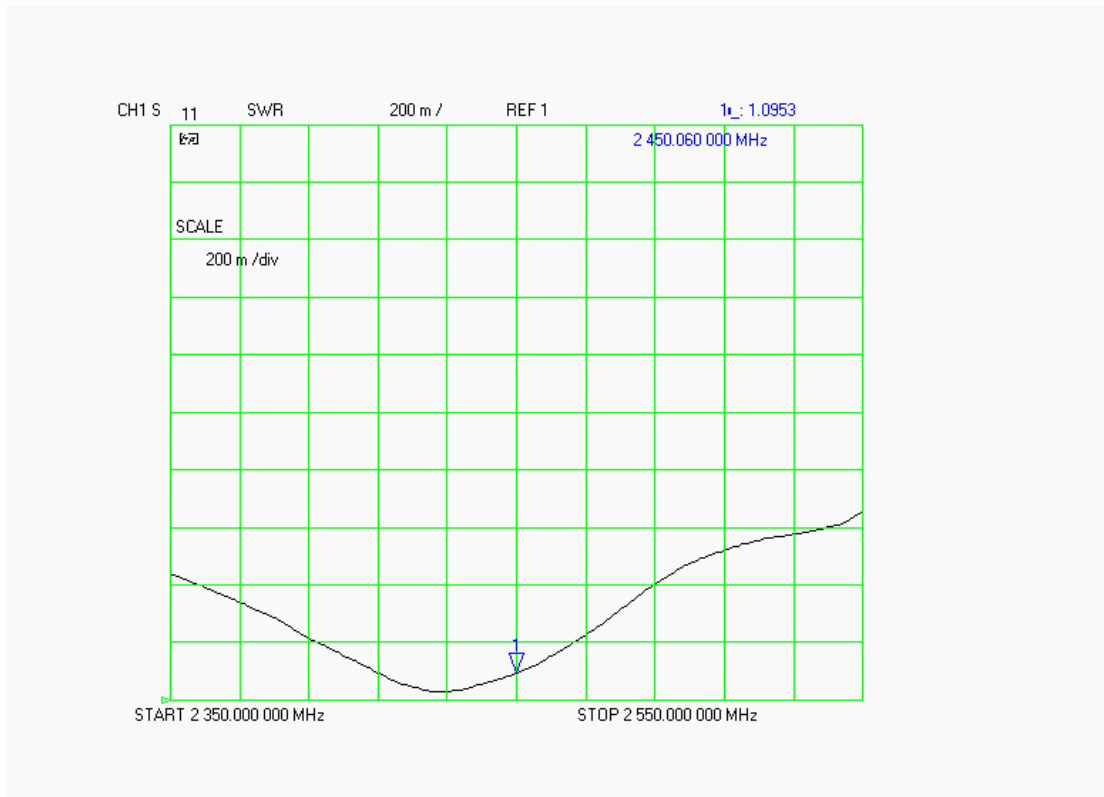
Test	Result
S11 R/L	-29.601 dB
SWR	1.0953 U
Impedance	53.854 $\Omega$

The following graphs are the results as displayed on the Vector Network Analyzer.

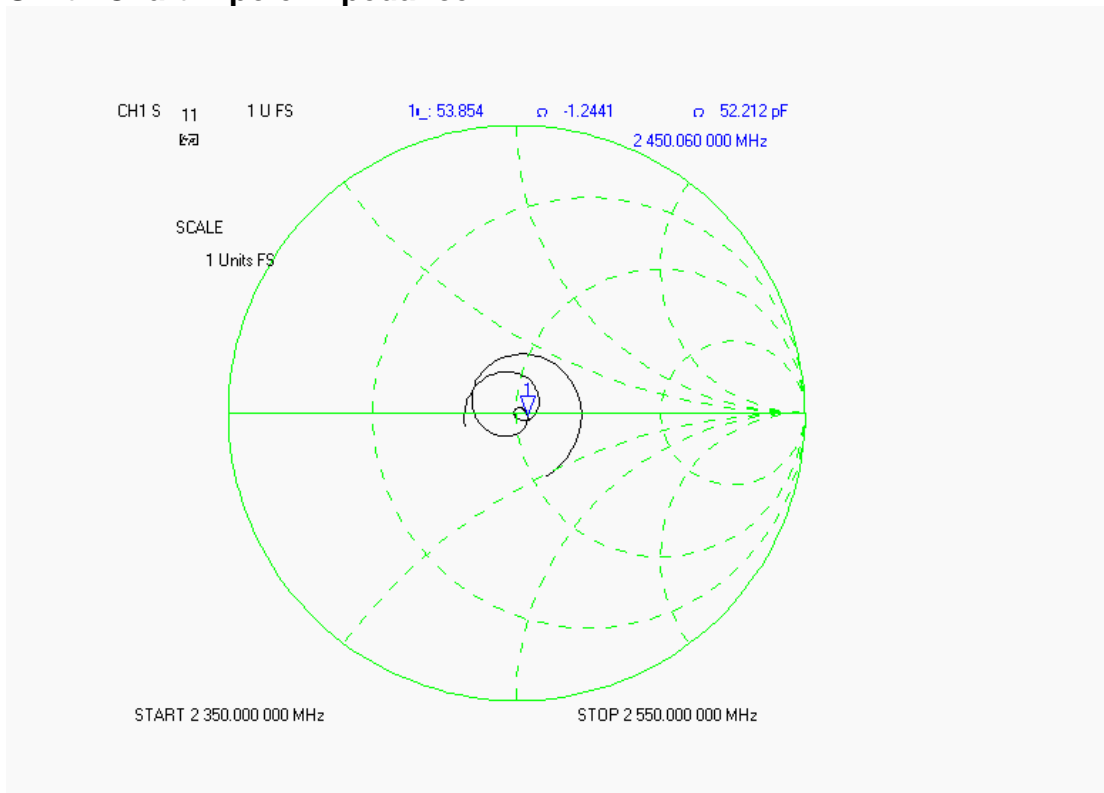
### S11 Parameter Return Loss



### SWR



### Smith Chart Dipole Impedance





## Body Measurement Conditions

The measurements were performed in the Uni-Phantom filled with body simulating liquid of the following electrical parameters at 2450 MHz:

Relative Dielectricity	52.59	± 5%
Conductivity	1.92 mho/m	± 5%

The APREL Laboratories ALSAS system with a dosimetric E-field probe E-020 (SN:217, Conversion factor 3.61 at 2450 MHz) was used for the measurements.

The dipole was mounted so that the dipole feed point was positioned below the center marking of the flat phantom and the dipole was oriented parallel to the body axis (the long side of the phantom). The standard measuring distance was 10mm from the dipole center to the solution surface.

The coarse grid with a grid spacing of 10mm was aligned with the dipole. The 5x5x8 fine cube was chosen for cube integration. The dipole input power (forward power) was 100mW ± 3%. The results are normalized to 1W input power.

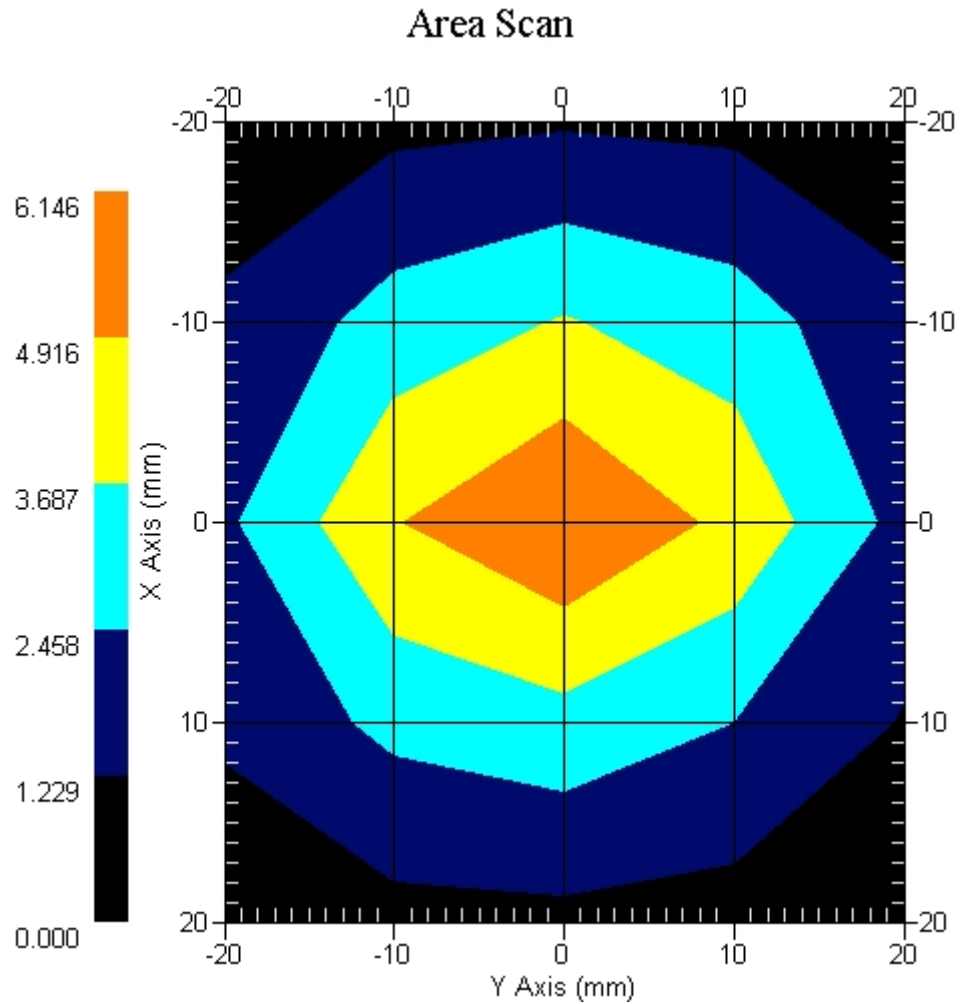
The laboratories environmental conditions were as follows during the calibration sequence.

Ambient Temperature of the Laboratory:	24 °C ± 1.0 °C
Temperature of the Tissue:	20 °C ± 1.0 °C
Relative Humidity:	41%

**SAR Measurement**

Standard SAR measurements were performed according to the measurement conditions described above. The results have been normalized to a dipole input power of 1W (forward power). The resulting averaged SAR values measured with the dosimetric probe E-020 SN:217 and applying the advanced extrapolation are:

Averaged over 1 cm<sup>3</sup> (1 g) of tissue:                    53.550 mW/g ± 18.8% (k=2)<sup>1</sup>  
 Averaged over 10 cm<sup>3</sup> (10 g) of tissue:                    24.710 mW/g ± 18.4% (k=2)<sup>1</sup>



1 gram SAR value : 5.355 W/kg  
 10 gram SAR value : 2.471 W/kg  
 Area Scan Peak SAR : 6.146 W/kg  
 Zoom Scan Peak SAR : 11.090 W/kg

<sup>1</sup> validation uncertainty

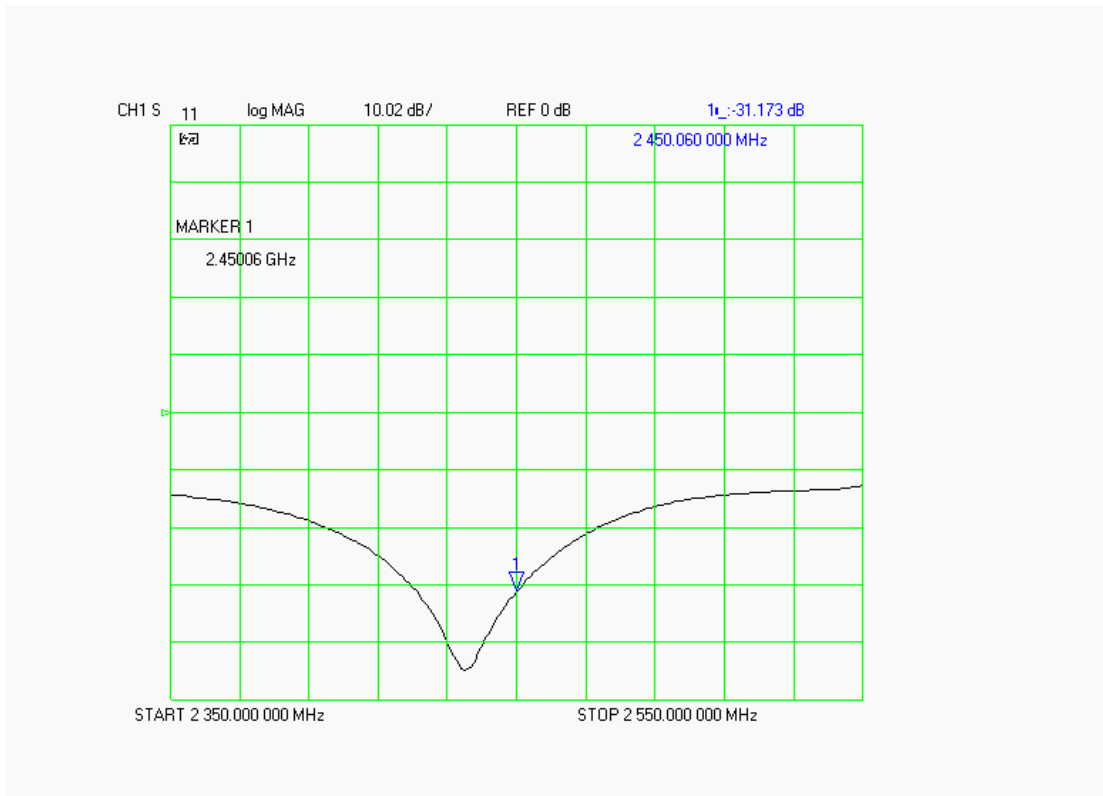
### Dipole Impedance and Return Loss

The impedance was measured at the SMA connector with a network analyzer. The dipole was positioned at the flat phantom sections according to measurement conditions stated above during impedance measurements.

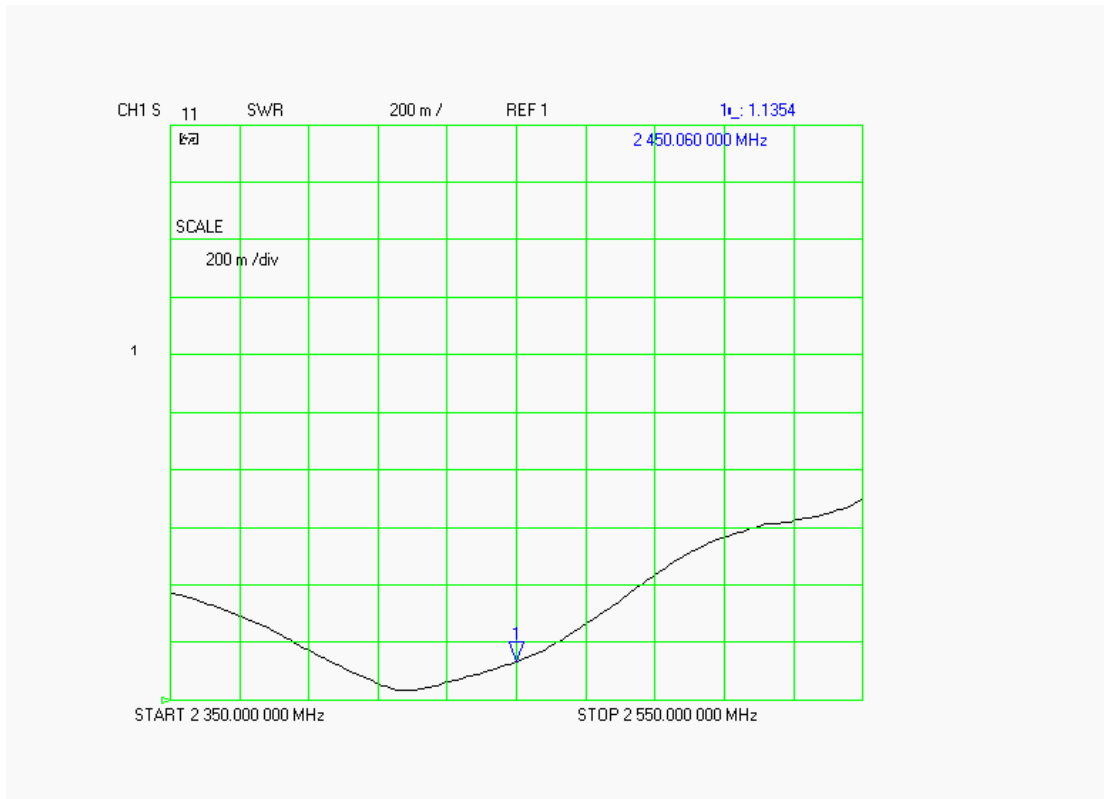
Test	Result
S11 R/L	-31.173 dB
SWR	1.1354 U
Impedance	54.146 $\Omega$

The following graphs are the results as displayed on the Vector Network Analyzer.

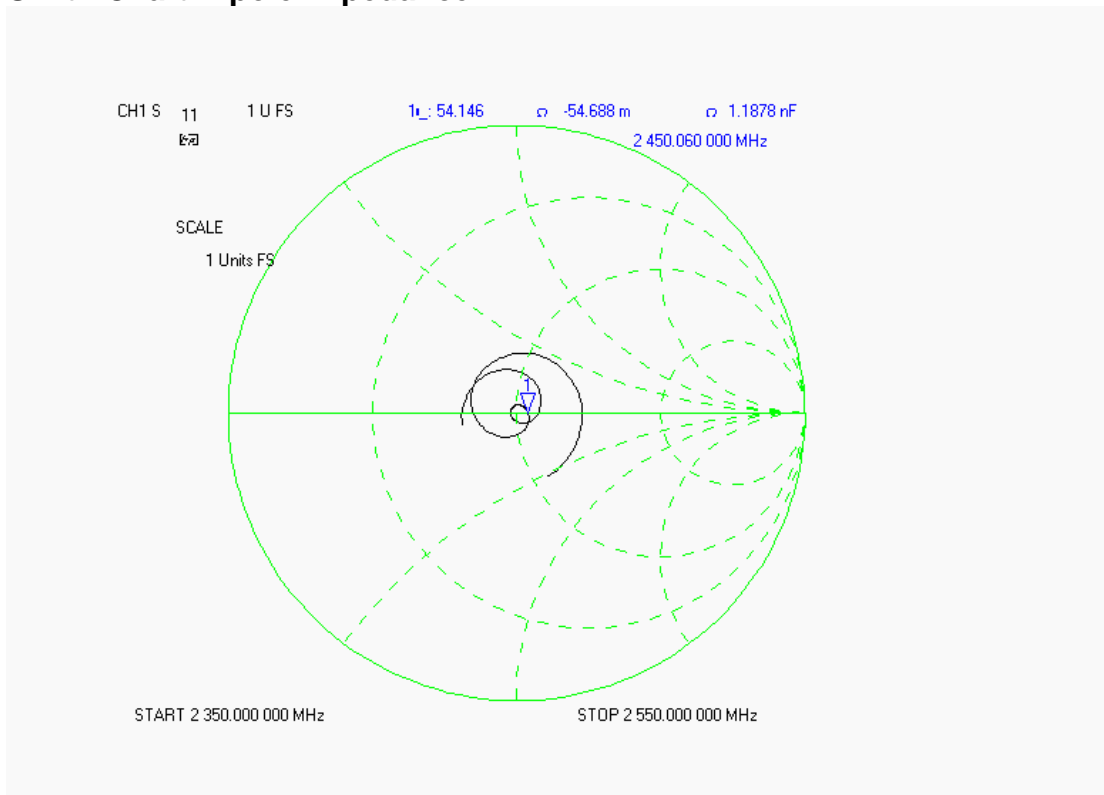
### S11 Parameter Return Loss



### SWR



### Smith Chart Dipole Impedance



## Test Equipment List

The test equipment used during Dipole Calibration, manufacturer, model number and, current calibration status are listed and located on the RF Exposure Lab, LLC system computer C:\Test Equipment\Calibration Equipment\Instrument List February 2008.

## RF Exposure Lab, LLC

Calibration File No: CAL.20070501

# CERTIFICATE OF CALIBRATION

It is certified that the equipment identified below has been calibrated at RF Exposure Lab, LLC by qualified personnel following recognized procedures and using transfer standards traceable to NRC/NIST.

### Validation Dipole

Manufacturer: APREL Laboratories

Part Number: ALS-D-BB-S-2

Frequency: 5.2 GHz to 5.8 GHz

Serial No: 235-00801

Manufactured: 22 May 2005  
Calibrated: 23 May 2007

Calibrated By: Signature on File  
Jay Moulton – Technical Manager

Approved By: Signature on File  
Tamara Moulton – Quality Manager

Measurement Uncertainty:

Repeatability:	23%
Tissue Uncertainty:	3.2%
Network Analyzer:	25%



## RF EXPOSURE LAB, LLC

2867 Progress Place, Suite 4D  
Escondido, CA 92029

Tel: (760) 737-3131  
FAX: (760) 737-9131

## Calibration Results Summary

The following results relate to the Calibrated Dipole and should be used as a quick reference for the user.

### Mechanical Dimensions

**Length:** 23.3 mm  
**Height:** 20.3 mm

### Electrical Specifications

#### 5.2 GHz Body

**SWR:** 1.8749 U  
**Return Loss:** -17.057 dB  
**Impedance:** 54.252  $\Omega$

#### System Validation Results

Frequency	1 Gram	10 Gram
5.2 GHz	62.98	15.44

#### 5.6 GHz Body

**SWR:** 1.2178 U  
**Return Loss:** -18.513 dB  
**Impedance:** 45.365  $\Omega$

#### System Validation Results

Frequency	1 Gram	10 Gram
5.6 GHz	59.92	15.30

#### 5.8 GHz Body

**SWR:** 1.8551 U  
**Return Loss:** -10.237 dB  
**Impedance:** 45.014  $\Omega$

#### System Validation Results

Frequency	1 Gram	10 Gram
5.8 GHz	58.92	15.05

## 5.2 GHz Body Measurement Conditions

The measurements were performed in the Uni-Phantom filled with body simulating liquid of the following electrical parameters at 5.2 GHz:

Relative Dielectricity	49.19	± 5%
Conductivity	5.40 mho/m	± 5%

The APREL Laboratories ALSAS system with a dosimetric E-field probe E-030 (SN:AL-E3P1, Conversion factor 13.0 at 5.2 GHz) was used for the measurements.

The dipole was mounted so that the dipole feed point was positioned below the center marking of the flat phantom and the dipole was oriented parallel to the body axis (the long side of the phantom). The standard measuring distance was 10mm from the dipole center to the solution surface.

The coarse grid with a grid spacing of 10mm was aligned with the dipole. The 7x7x7 fine cube was chosen for cube integration. The dipole input power (forward power) was 100mW ± 3%. The results are normalized to 1W input power.

The laboratories environmental conditions were as follows during the calibration sequence.

Ambient Temperature of the Laboratory:	23 °C ± 1.0 °C
Temperature of the Tissue:	20 °C ± 1.0 °C
Relative Humidity:	52%

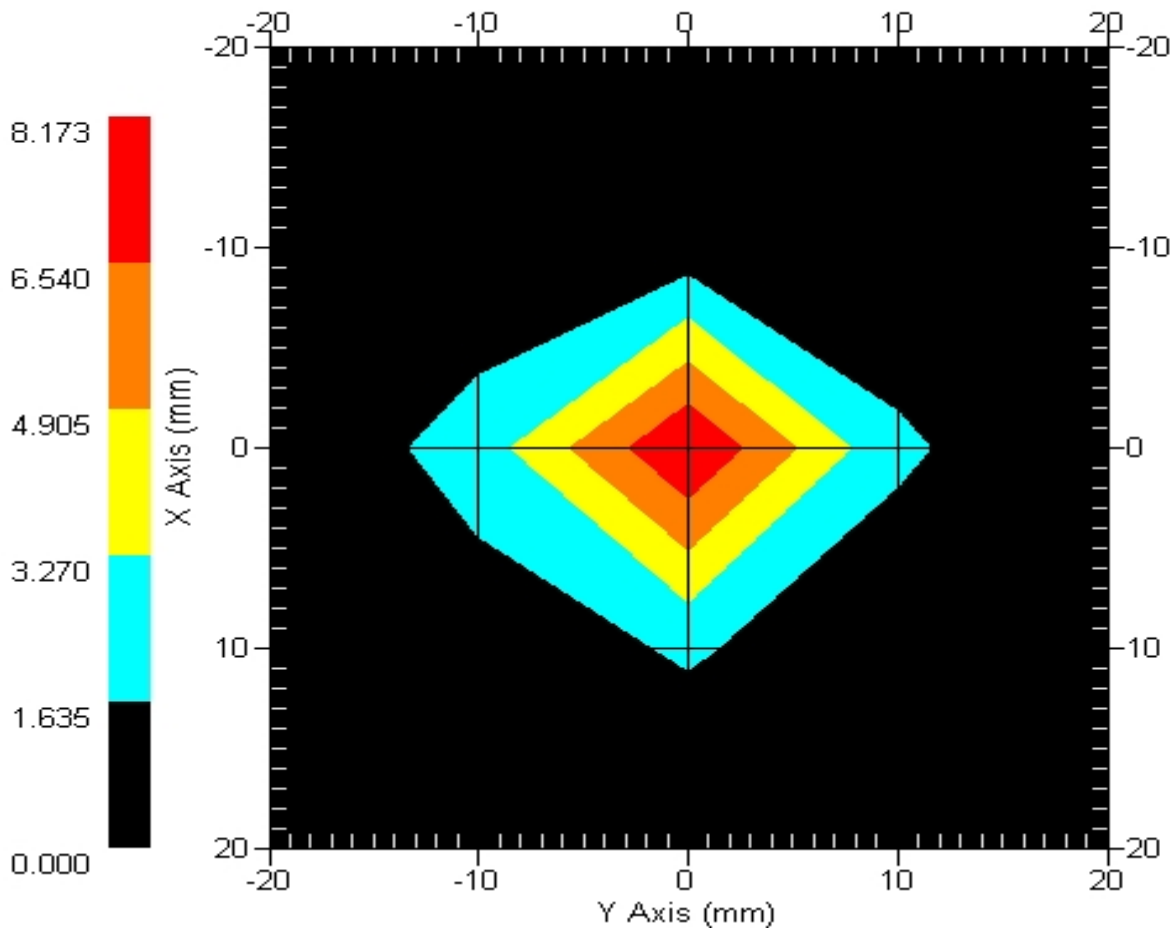


**SAR Measurement**

Standard SAR measurements were performed according to the measurement conditions described above. The results have been normalized to a dipole input power of 1W (forward power). The resulting averaged SAR values measured with the dosimetric probe E-030 SN:AL-E3P1 and applying the advanced extrapolation are:

Averaged over 1 cm<sup>3</sup> (1 g) of tissue: 62.98 mW/g ± 19.1% (k=2)<sup>1</sup>  
 Averaged over 10 cm<sup>3</sup> (10 g) of tissue: 15.44 mW/g ± 18.8% (k=2)<sup>1</sup>

**Area Scan**



1 gram SAR value : 6.298 W/kg  
 10 gram SAR value : 1.544 W/kg  
 Area Scan Peak SAR : 8.173 W/kg  
 Zoom Scan Peak SAR : 21.817 W/kg

<sup>1</sup> validation uncertainty

## 5.6 GHz Body Measurement Conditions

The measurements were performed in the Uni-Phantom filled with body simulating liquid of the following electrical parameters at 5.6 GHz:

Relative Dielectricity	48.22	± 5%
Conductivity	5.68 mho/m	± 5%

The APREL Laboratories ALSAS system with a dosimetric E-field probe E-030 (SN:AL-E3P1, Conversion factor 13.5 at 5.6 GHz) was used for the measurements.

The dipole was mounted so that the dipole feed point was positioned below the center marking of the flat phantom and the dipole was oriented parallel to the body axis (the long side of the phantom). The standard measuring distance was 10mm from the dipole center to the solution surface.

The coarse grid with a grid spacing of 10mm was aligned with the dipole. The 7x7x7 fine cube was chosen for cube integration. The dipole input power (forward power) was 100mW ± 3%. The results are normalized to 1W input power.

The laboratories environmental conditions were as follows during the calibration sequence.

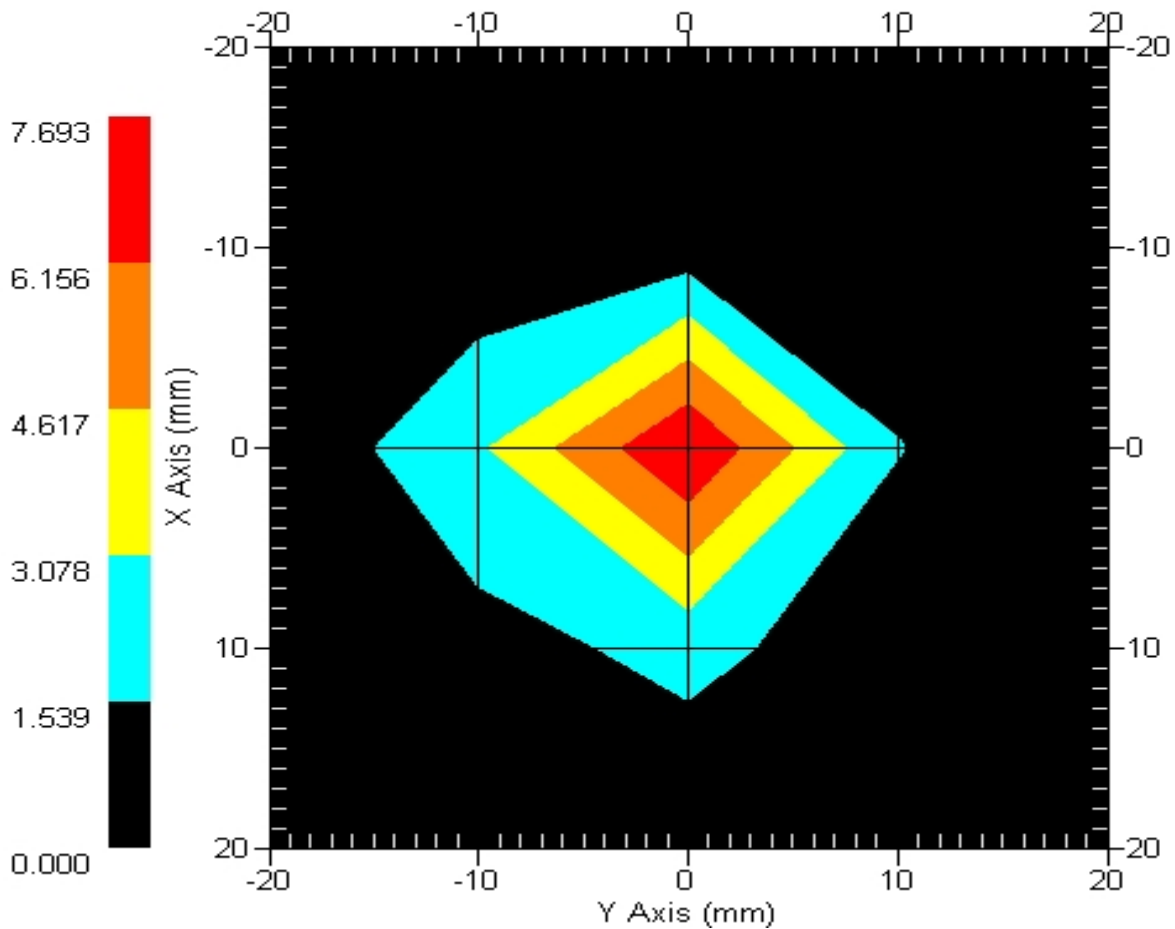
Ambient Temperature of the Laboratory:	23 °C ± 1.0 °C
Temperature of the Tissue:	20 °C ± 1.0 °C
Relative Humidity:	52%

**SAR Measurement**

Standard SAR measurements were performed according to the measurement conditions described above. The results have been normalized to a dipole input power of 1W (forward power). The resulting averaged SAR values measured with the dosimetric probe E-030 SN:AL-E3P1 and applying the advanced extrapolation are:

Averaged over 1 cm<sup>3</sup> (1 g) of tissue: 59.92 mW/g ± 19.1% (k=2)<sup>1</sup>  
 Averaged over 10 cm<sup>3</sup> (10 g) of tissue: 15.30 mW/g ± 18.8% (k=2)<sup>1</sup>

**Area Scan**



1 gram SAR value : 5.992 W/kg  
 10 gram SAR value : 1.530 W/kg  
 Area Scan Peak SAR : 7.693 W/kg  
 Zoom Scan Peak SAR : 19.415 W/kg

<sup>1</sup> validation uncertainty

## 5.8 GHz Body Measurement Conditions

The measurements were performed in the Uni-Phantom filled with body simulating liquid of the following electrical parameters at 5.8 GHz:

Relative Dielectricity	48.53	± 5%
Conductivity	5.95 mho/m	± 5%

The APREL Laboratories ALSAS system with a dosimetric E-field probe E-030 (SN:AL-E3P1, Conversion factor 14.0 at 5.8 GHz) was used for the measurements.

The dipole was mounted so that the dipole feed point was positioned below the center marking of the flat phantom and the dipole was oriented parallel to the body axis (the long side of the phantom). The standard measuring distance was 10mm from the dipole center to the solution surface.

The coarse grid with a grid spacing of 10mm was aligned with the dipole. The 7x7x7 fine cube was chosen for cube integration. The dipole input power (forward power) was 100mW ± 3%. The results are normalized to 1W input power.

The laboratories environmental conditions were as follows during the calibration sequence.

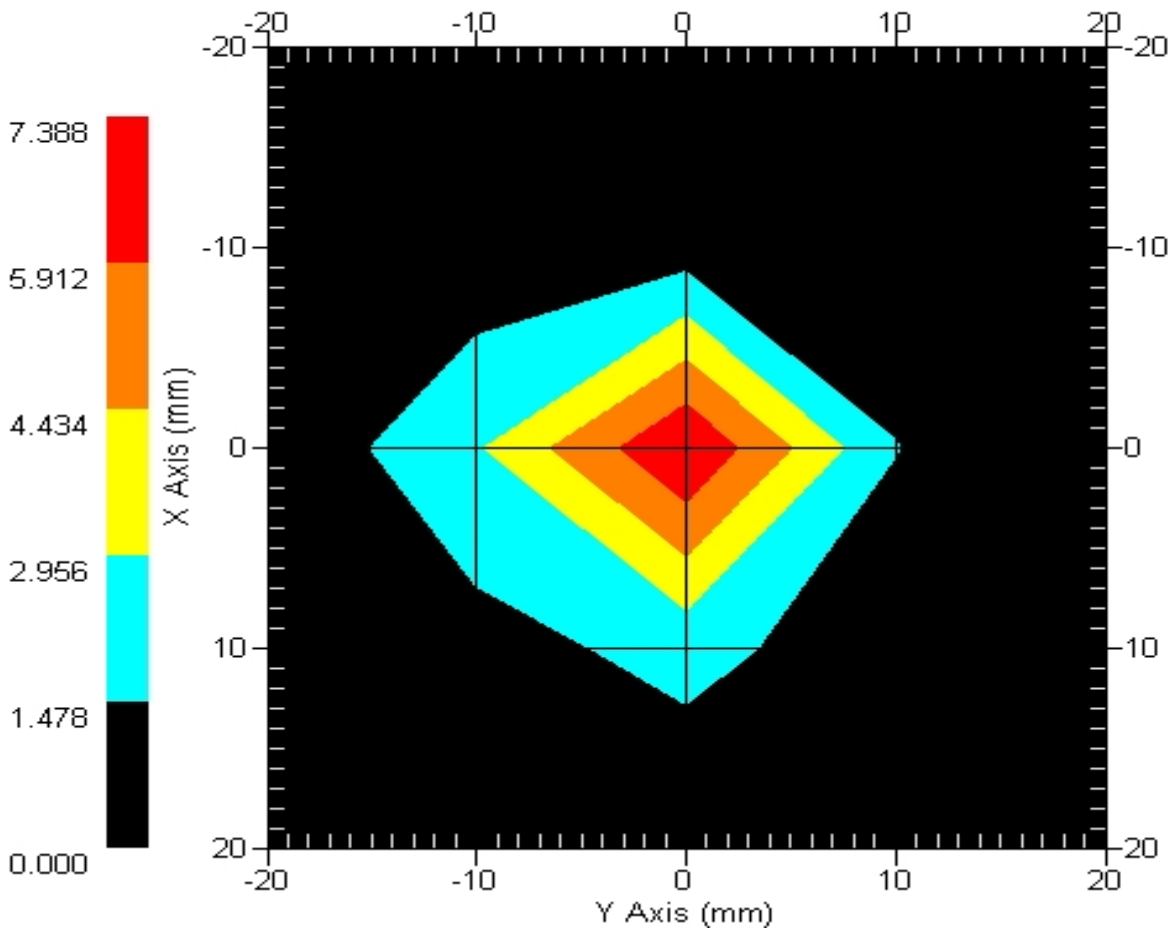
Ambient Temperature of the Laboratory:	23 °C ± 1.0 °C
Temperature of the Tissue:	20 °C ± 1.0 °C
Relative Humidity:	52%

**SAR Measurement**

Standard SAR measurements were performed according to the measurement conditions described above. The results have been normalized to a dipole input power of 1W (forward power). The resulting averaged SAR values measured with the dosimetric probe E-030 SN:AL-E3P1 and applying the advanced extrapolation are:

Averaged over 1 cm<sup>3</sup> (1 g) of tissue: 58.92 mW/g ± 19.1% (k=2)<sup>1</sup>  
 Averaged over 10 cm<sup>3</sup> (10 g) of tissue: 15.05 mW/g ± 18.8% (k=2)<sup>1</sup>

**Area Scan**



1 gram SAR value : 5.892 W/kg  
 10 gram SAR value : 1.505 W/kg  
 Area Scan Peak SAR : 7.388 W/kg  
 Zoom Scan Peak SAR : 19.315 W/kg

<sup>1</sup> validation uncertainty

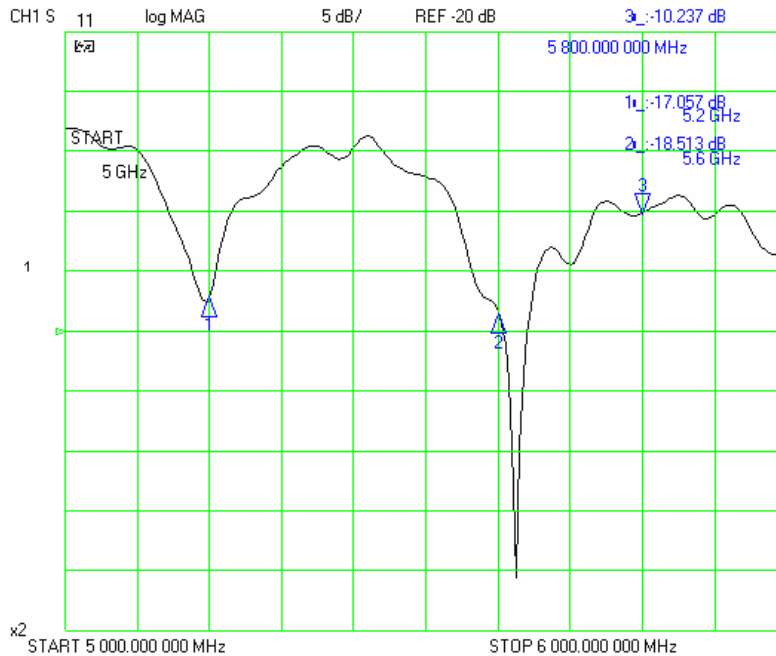
### Dipole Impedance and Return Loss

The impedance was measured at the SMA connector with a network analyzer. The dipole was positioned at the flat phantom sections according to measurement conditions stated above during impedance measurements.

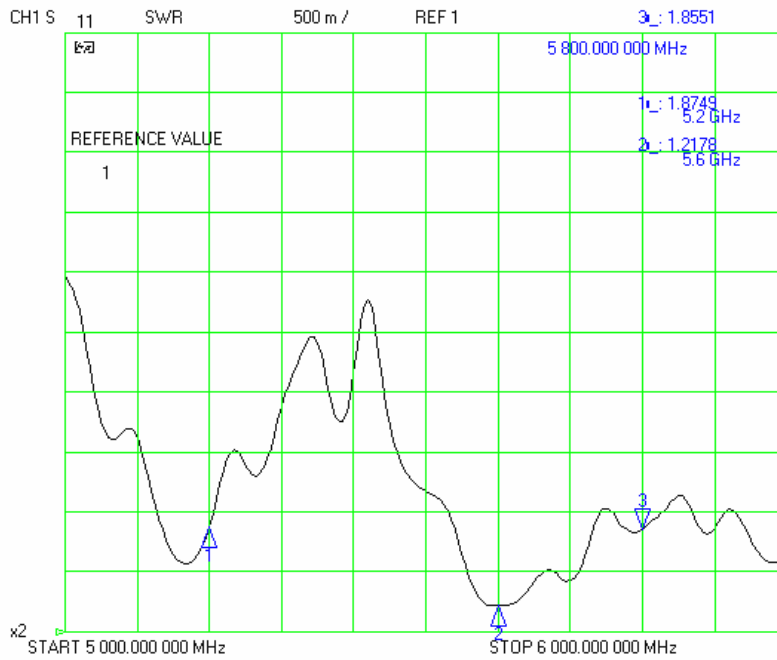
Test	Result – 5.2 GHz	Result – 5.6 GHz	Result – 5.8 GHz
S11 R/L	-17.057 dB	-18.513 dB	-10.237 dB
SWR	1.8749 U	1.2178 U	1.8551 U
Impedance	54.252 $\Omega$	45.365 $\Omega$	45.014 $\Omega$

The following graphs are the results as displayed on the Vector Network Analyzer.

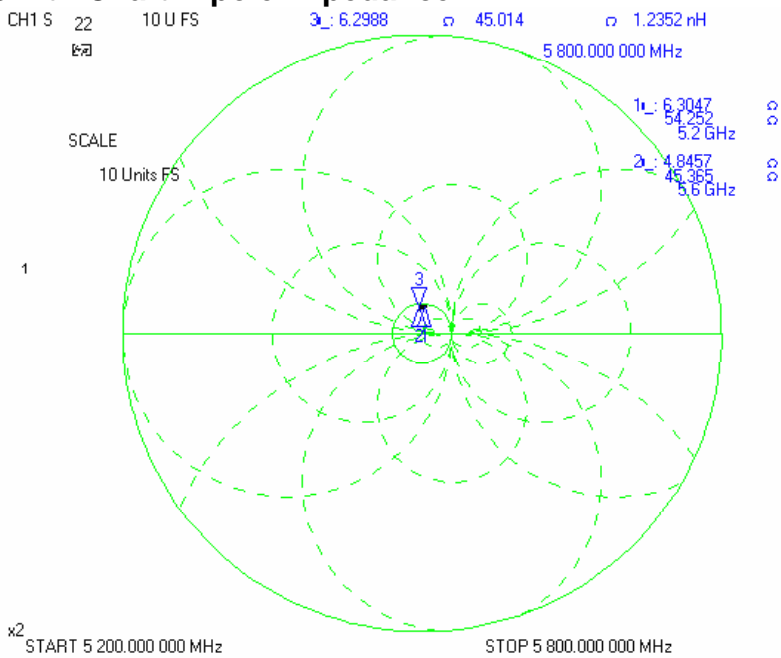
### S11 Parameter Return Loss



**SWR**



**Smith Chart Dipole Impedance**



## Test Equipment List

The test equipment used during Dipole Calibration, manufacturer, model number and, current calibration status are listed and located on the RF Exposure Lab, LLC system computer C:\Test Equipment\Calibration Equipment\Instrument List May 2007.



## Appendix F – Phantom Calibration Data Sheets

## NCL CALIBRATION LABORATORIES

Calibration File No.: RFE-273

# CERTIFICATE OF CALIBRATION

It is certified that the equipment identified below has been calibrated in the **NCL CALIBRATION LABORATORIES** by qualified personnel following recognized procedures and using transfer standards traceable to National Standards.

Thickness of the UniPhantom is 2 mm  $\pm$  10%  
Pinna thickness is 6 mm  $\pm$  10%

Resolution:	0.01 mm	Calibrated to:	0.0 mm
Stability:	OK	Accuracy:	< 0.1 mm

Calibrated By: Karen K. Feb 17/04.

### **NCL** CALIBRATION LABORATORIES

51 SPECTRUM WAY  
NEPEAN, ONTARIO  
CANADA K2R 1E6

Division of APREL Lab.  
TEL: (613) 820-4988  
FAX: (613) 820-4161