

MOTOROLA

EU  
 JP

**WMC6300**  
**Wireless Modem Card**

This device complies with Part 15 of the FCC Rules. Operation is subject to the following two conditions: (1) this device may not cause harmful interference, and (2) this device must accept any interference received, including interference that may cause undesired operation.

Protected by U.S. & International Patents

FCC ID: QJEWMC63000704

CANADA: 4602A-WMC0704C

INPUT: 3.3V



00-05-12-0A-BA-5B



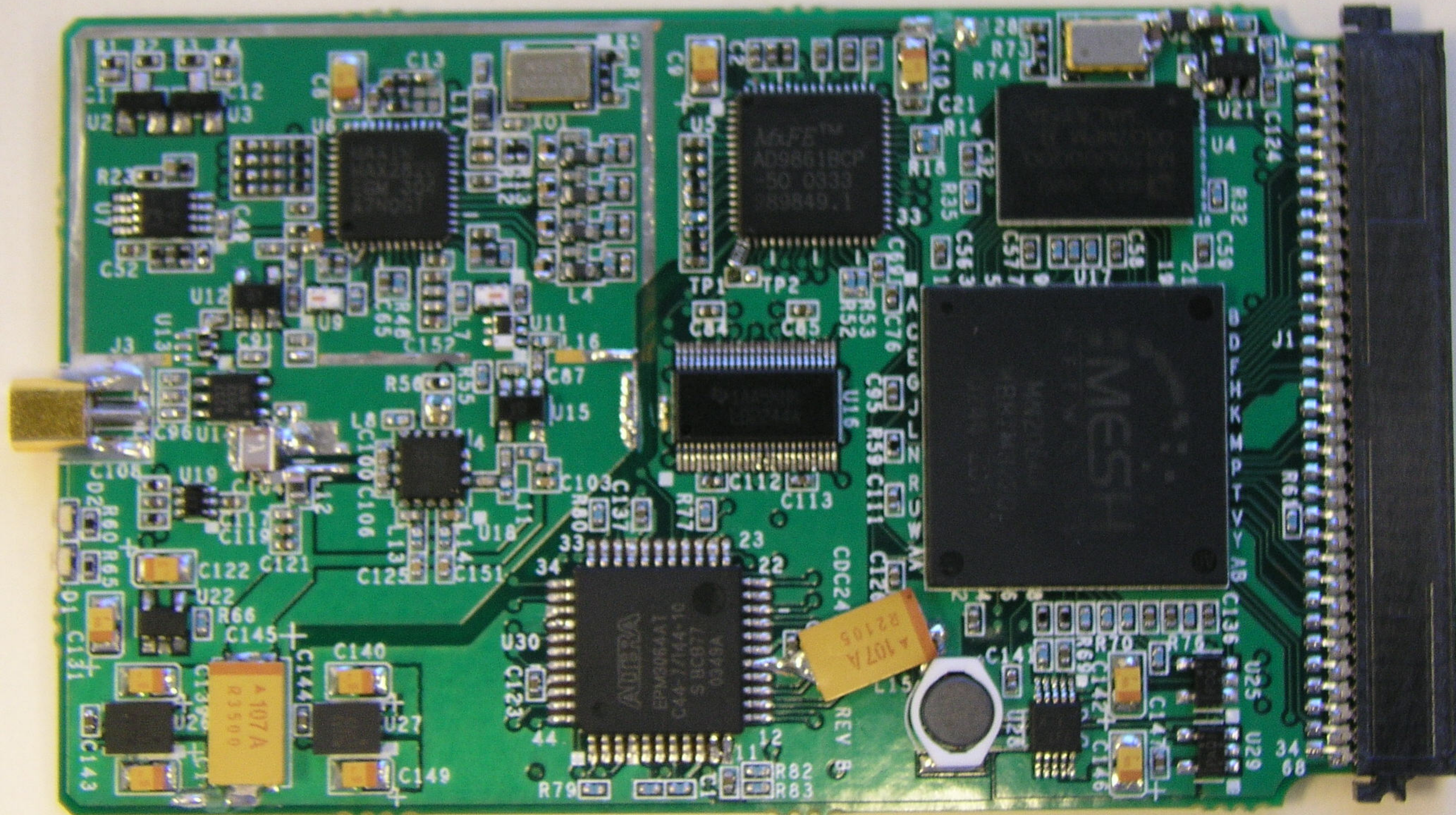
Mesh Enabled  
Architecture



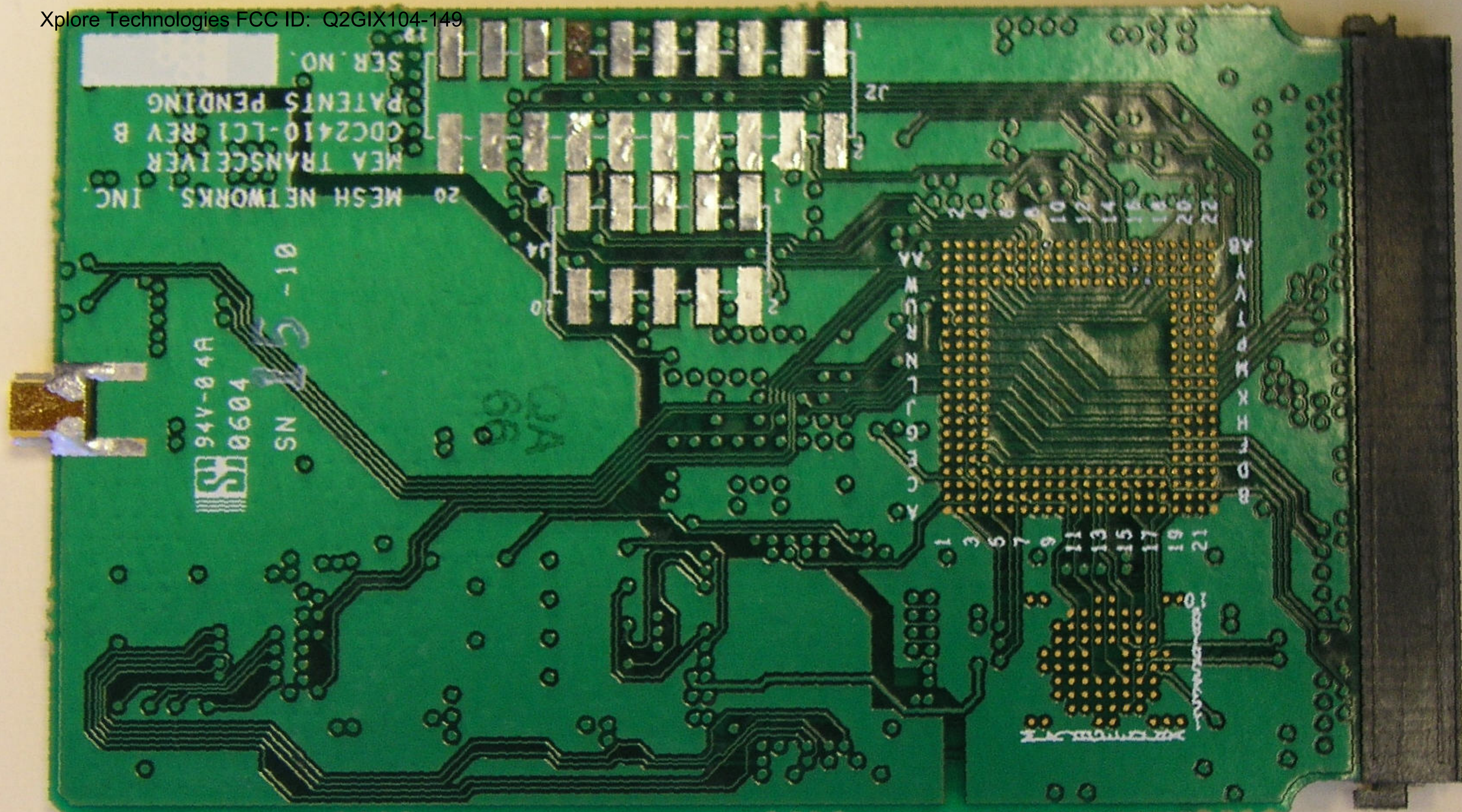
MADE IN THE USA











MESH NETWORKS, INC.  
MEA TRANSCIEVER  
QDC2410-LC1 REV B  
PATENTS PENDING  
SER. NO.

94V-04A  
0604  
NS

01-10

WERNL-GMC

1 3 5 7 9 11 13 15 17 19 21

Handwritten markings

AB  
AC  
AD  
AE  
AF  
AG  
AH  
AI  
AJ  
AK  
AL  
AM  
AN  
AO  
AP  
AQ  
AR  
AS  
AT  
AU  
AV  
AW  
AX  
AY  
AZ

22  
21  
20  
19  
18  
17  
16  
15  
14  
13  
12  
11  
10  
9  
8  
7  
6  
5  
4  
3  
2  
1

J2

20

J4

9

J2

2

1