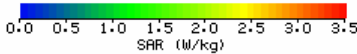
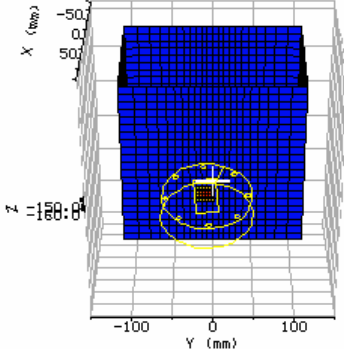
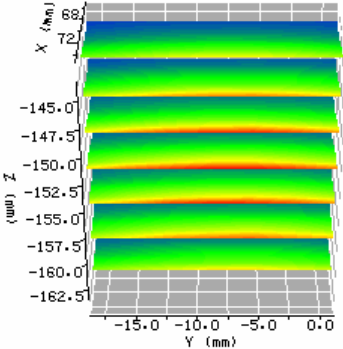
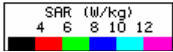
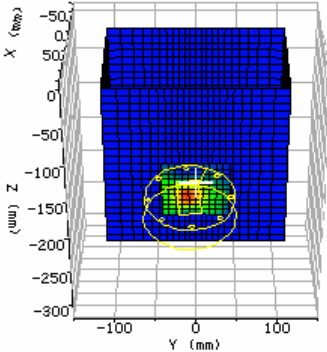
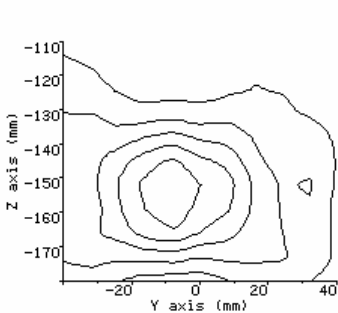
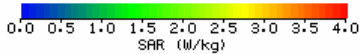
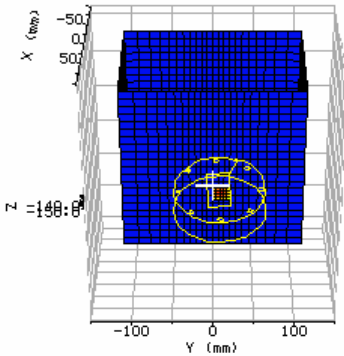
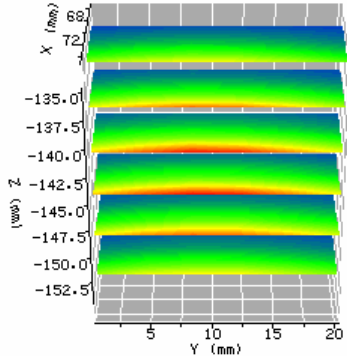
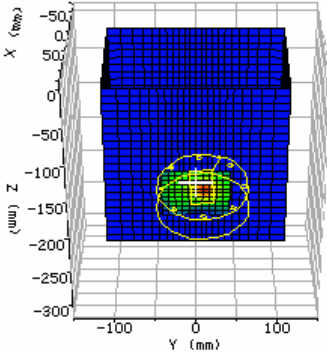
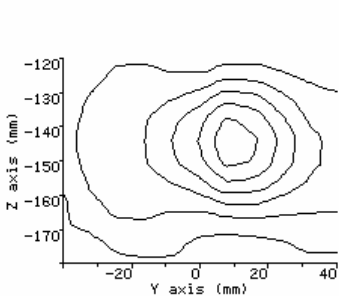


5250 MHz verification 3/30/2004:



5800 MHz verification 4/1/2004:



2450 MHz verification 3/23/2004:

Date / Time: 3/23/2004 11:53:54 AM
Filename: *.txt
Device Tested: System
Antenna: dipole 2450
Shape File: Dipole1800.csv

Position: verification
Phantom: HeadBox_new_spout.csv
Head Rotation: 0
Test Frequency: 2450
Power Level: 1 Watt

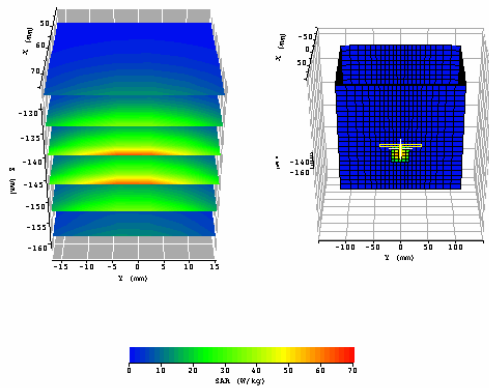
Probe: 0106
Cal File: 106_2450_HEAD

Cal Factors:

	X	Y	Z
Air	415	805	371
DCP	20	20	20
Lin	0.480	0.480	0.480

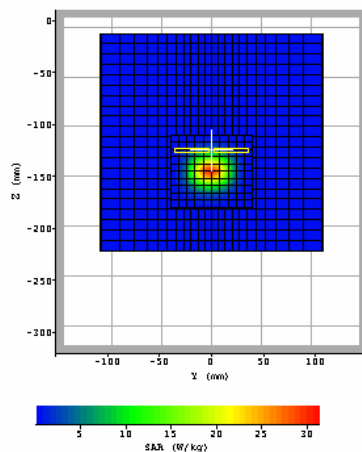
Amp Gain: 2
Averaging: 6
Batteries Replaced: 03/23/04

Liquid: 2450
Type: Head
Conductivity: 1.872
Relative Permittivity: 38.57
Liquid Temp (deg C): 22.0
Ambient Temp (deg C): 22.0
Ambient RH (%): 50
Density (kg/m3): 1000
Software Version: 0.420



ZOOM SCAN RESULTS:

Spot SAR (W/kg):	Start Scan	End Scan
	9.762	9.789
Change during Scan (%):	0.28	
Max E-field (V/m):	182.73	
Max SAR (W/kg)	1g	10g
	51.081	24.467
Location of Max (mm):	X	Y
	75.1	-16.8
		Z
		-145.0



AREA SCAN:

Scan Extent:

	Min	Max	Steps
Y	-40.0	40.0	10.0
Z	-180.0	-110.0	10.0