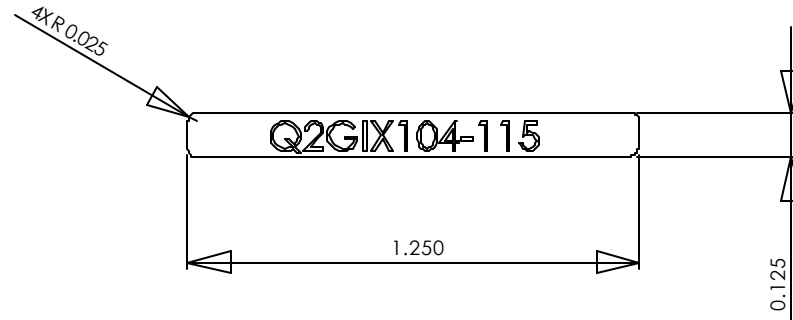


NOTES:

1. Material: Polycarbonate T= 0.127mm with matted texture
2. Material must be approved by UL, CSA
3. Adhesive Spec Refer to ES-811-RO5 Sony 303 or Toyo Df2700MR or Equiv
4. Print Color: Letters Silver ACD M808
Background Black ACD-M8010 and cool gray 11
5. Print Tolerance of dimensions +0.3/.03

REVISIONS				
ZONE	REV.	DESCRIPTION	DATE	APPROVED



PROPRIETARY AND CONFIDENTIAL
 THE INFORMATION CONTAINED IN THIS DRAWING IS THE SOLE PROPERTY OF XPLORE TECHNOLOGIES. ANY REPRODUCTION IN PART OR AS A WHOLE WITHOUT THE WRITTEN PERMISSION OF XPLORE TECHNOLOGIES IS PROHIBITED.

		DIMENSIONS ARE IN INCHES		NAME	DATE	Xplore Technologies
		TOLERANCES:		DRAWN		
		FRACTIONAL ±		CHECKED		LABEL, IX104, WIRELESS, S24-DS
		ANGULAR: MACH ± BEND ±		ENG APPR.		
		TWO PLACE DECIMAL ±		MFG APPR.		
		THREE PLACE DECIMAL ±		Q.A.		
		MATERIAL --		COMMENTS:		
NEXT ASSY	USED ON	FINISH --				SIZE A
APPLICATION		DO NOT SCALE DRAWING				DWG. NO. 50-23043
						REV. A
				SCALE: 2:1		WEIGHT:
						SHEET 1 OF 1

