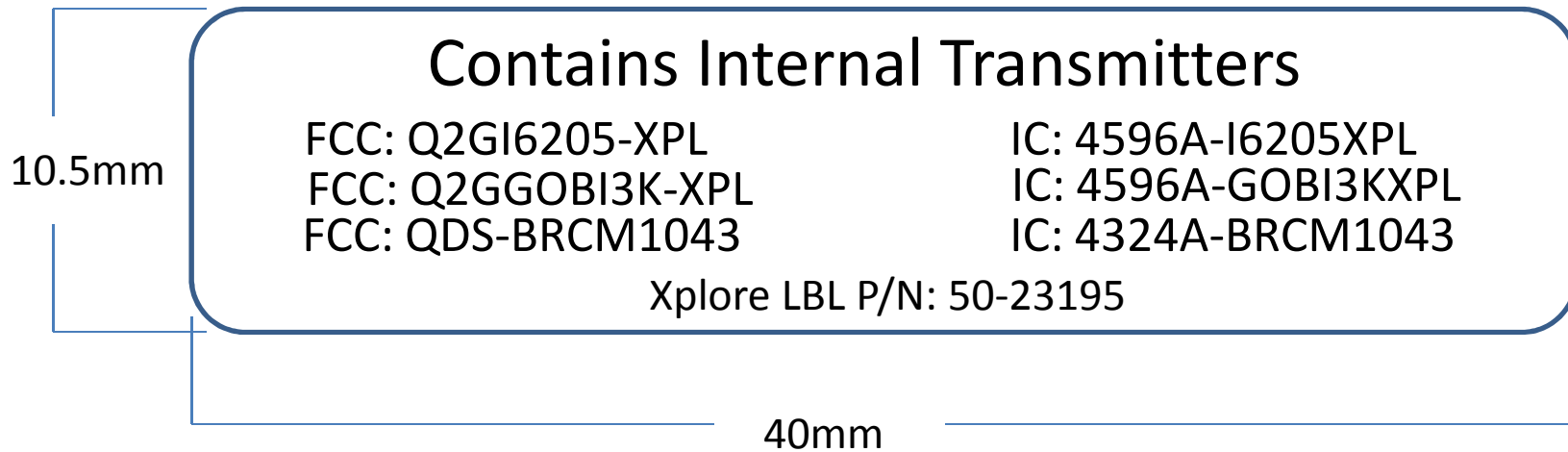


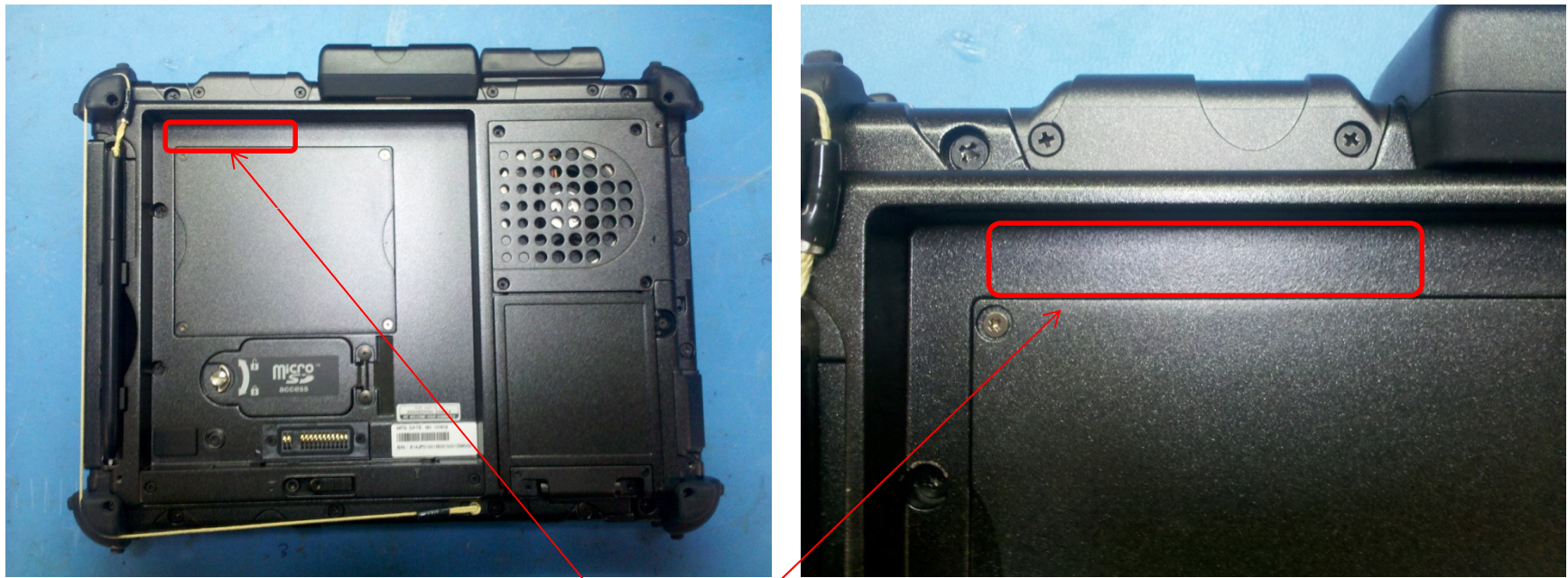
# Intel 6205 a/b/g/n and GOBI3000 Configuration Label



1. *MATERIAL: 0.127mm Velvet Lexan + 3M467*
2. *FINISH: PRINT FRONT SIDE , ADHESIVE BACK*
3. *COLOR: BACKGROUND -- PANTONE BLACK C*
4. *LETTERS -----PANTONE COOL GRAY 6C*
5. *PRINTING TOLERANCE OF DIMENSION ARE +0.3/-0.3mm*

**NOTE:** This label will be placed under the battery. The BT is standard and does not require labeling.

# Configuration Label Placement



**NOTE:** This label will be placed under the battery.