




Lynx Antenna Report

Task

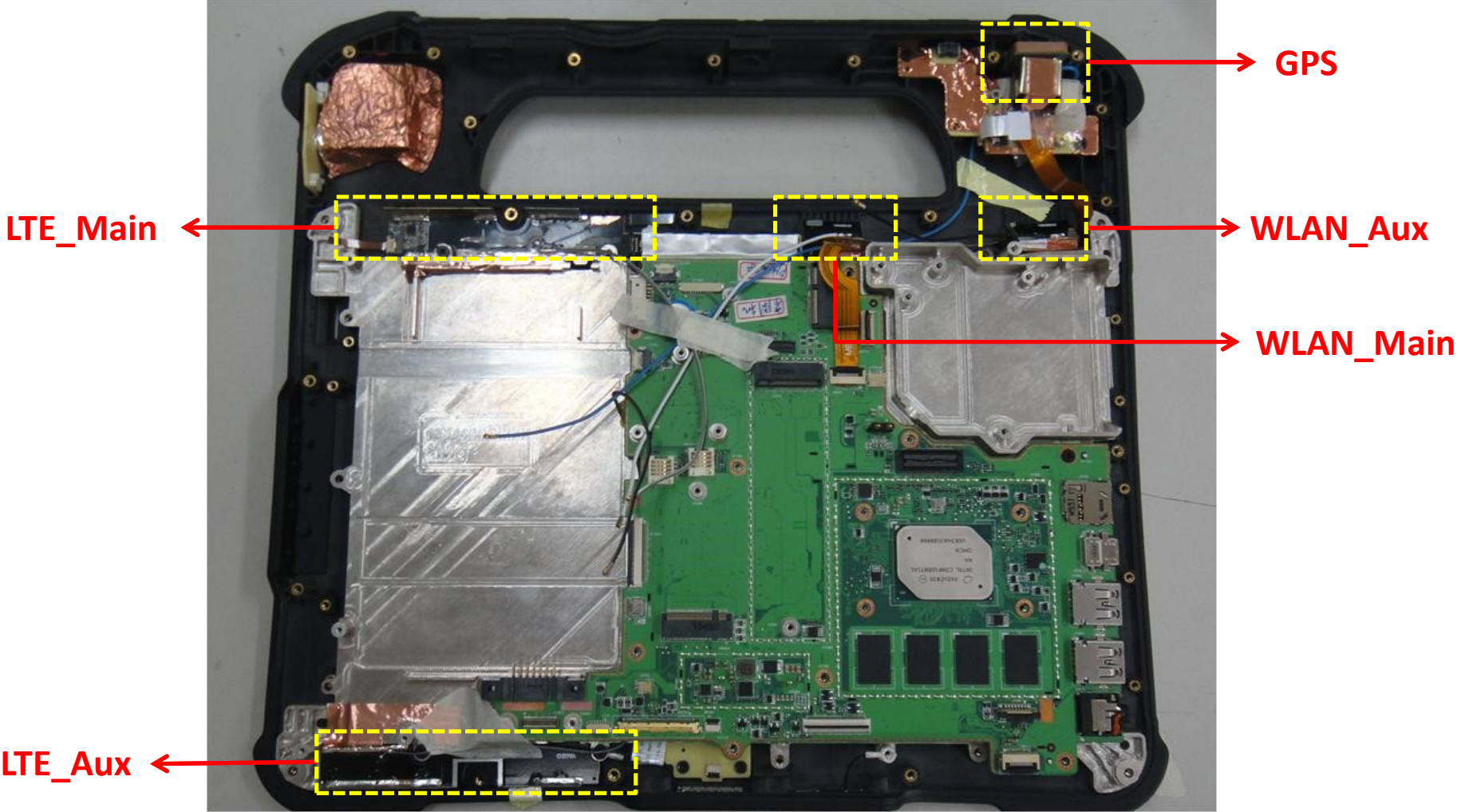
 Update:4/21

Antenna gain tuning with dummy mock-up sample item :

- A. LTE antenna performance result. 
- B. WLAN antenna performance result. 
- C. GPS antenna performance result. 

Antenna environment

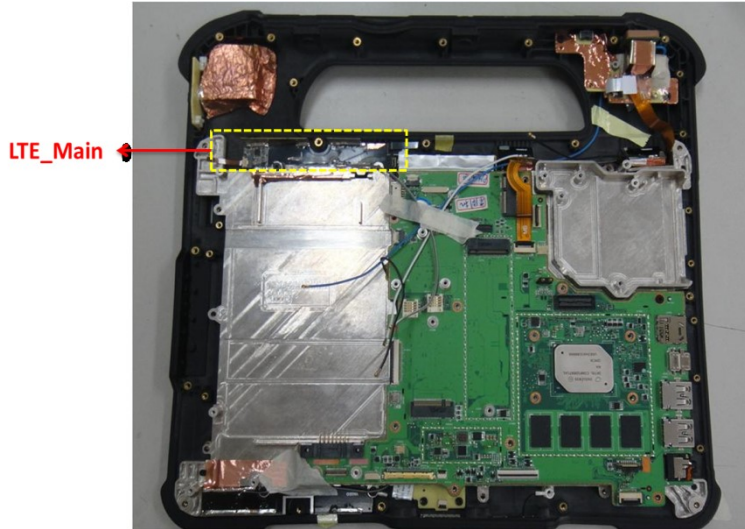
Update:4/21



A. LTE antenna performance result

Update:4/21

➤ Main antenna

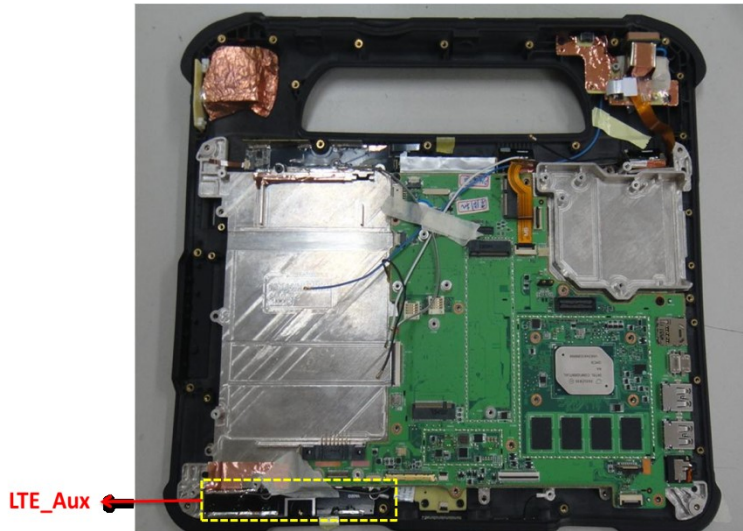


Freq.	Main
698	-5.05
704	-5.12
710	-5.23
716	-5.24
720	-4.96
725	-4.52
730	-4.27
734	-4.19
740	-4.05
746	-4.06
756	-3.81
765	-3.64
772	-3.89
777	-4.12
782	-4.29
787	-4.40
791	-4.14
806	-4.16
821	-4.17
824	-4.27
836	-4.11
849	-3.83
862	-3.73
869	-3.74
880	-3.69
894	-3.84
900	-3.76
915	-4.08
925	-4.38
940	-4.63
960	-4.91

1710	-3.69
1730	-3.65
1750	-3.73
1770	-3.97
1785	-3.90
1805	-3.83
1840	-3.73
1850	-3.79
1880	-3.52
1910	-2.95
1920	-3.00
1930	-2.97
1950	-2.75
1960	-2.71
1980	-2.89
1995	-3.07
2110	-3.16
2140	-3.30
2170	-3.71
2300	-3.29
2325	-3.82
2350	-4.18
2375	-4.53
2400	-4.46
2500	-4.20
2515	-4.29
2535	-4.51
2555	-4.91
2570	-4.96
2595	-4.80
2620	-4.84
2630	-5.23
2655	-4.97
2680	-4.57
2690	-4.56

A. LTE antenna performance result

➤ Aux antenna

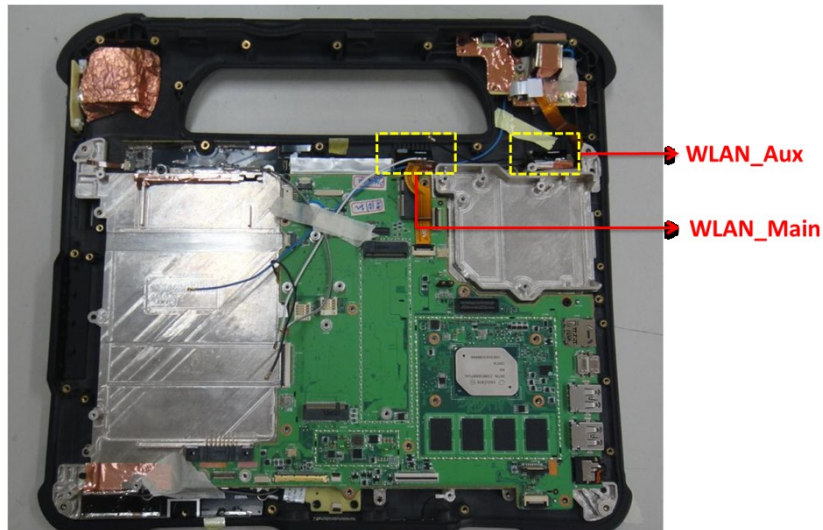


Freq.	Aux
698	
704	
710	
716	
720	-5.39
725	-5.30
730	-5.30
734	-5.14
740	-4.91
746	-4.90
756	-4.81
765	-4.80
772	-4.79
777	
782	
787	
791	-4.93
806	-4.45
821	-4.83
824	
836	
849	
862	
869	-3.89
880	-4.17
894	-4.52
900	
915	
925	-4.95
940	-5.31
960	-5.96

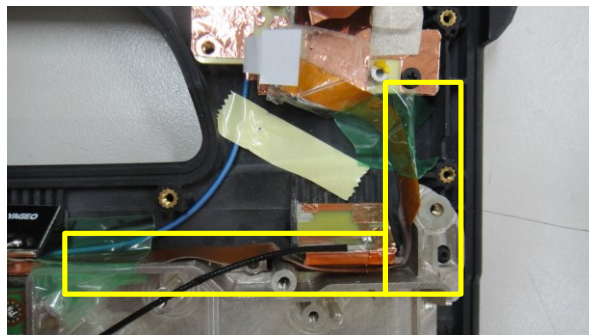
1710	-4.81
1730	-4.68
1750	-4.67
1770	-4.85
1785	-4.97
1805	-4.99
1840	-4.77
1850	-4.70
1880	-3.98
1910	-3.43
1920	-3.54
1930	-3.66
1950	-3.96
1960	-3.99
1980	-4.03
1995	-4.03
2110	-5.49
2140	-5.55
2170	-5.22
2300	-4.26
2325	-4.31
2350	-4.83
2375	-4.85
2400	-4.46
2500	-4.62
2515	-4.88
2535	-5.27
2555	-5.75
2570	-5.48
2595	-5.99
2620	-6.27
2630	-6.27
2655	-6.16
2680	-5.96
2690	-5.87

B. WLAN antenna performance result

➤ Main & Aux antenna



Freq.	Main	AUX	SPEC
2400	-3.24	-3.95	-3.50
2442	-3.33	-3.79	-3.50
2484	-3.05	-3.93	-3.50
5150	-3.57	-3.82	-3.50
5250	-2.90	-3.71	-3.50
5350	-3.36	-3.66	-3.50
5470	-3.28	-3.76	-3.50
5725	-3.59	-3.67	-3.50
5785	-3.45	-3.80	-3.50
5875	-3.47	-3.66	-3.50



Note:

- W/O camera board
- FFC Cable routing causing antenna unstable, need to fix it and re-route the FFC away from the antenna or different routing path.

C. GPS antenna performance result

➤ GPS antenna:18x18x4mm



Freq.	GPS	SPEC
1560	-5.65	-3.00
1565	-5.05	-3.00
1575	-4.14	-3.00
1585	-5.08	-3.00
1595	-3.11	-3.00
1602	-3.01	-3.00
1606	-3.95	-3.00